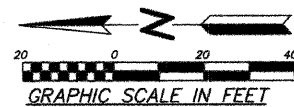
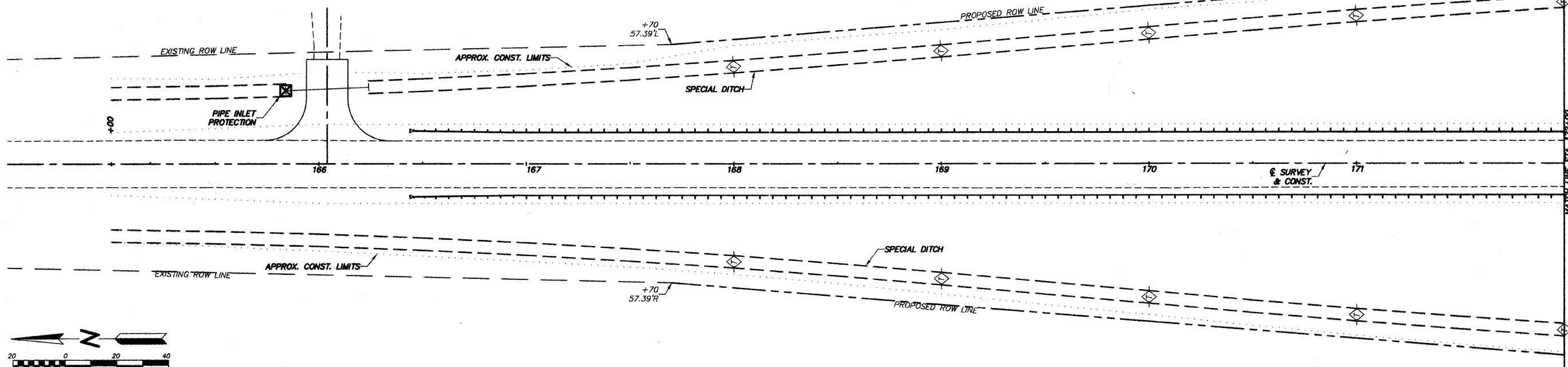


SECTION 26 - TOWNSHIP 2 NORTH - RANGE 9 WEST of the 4th P.M.

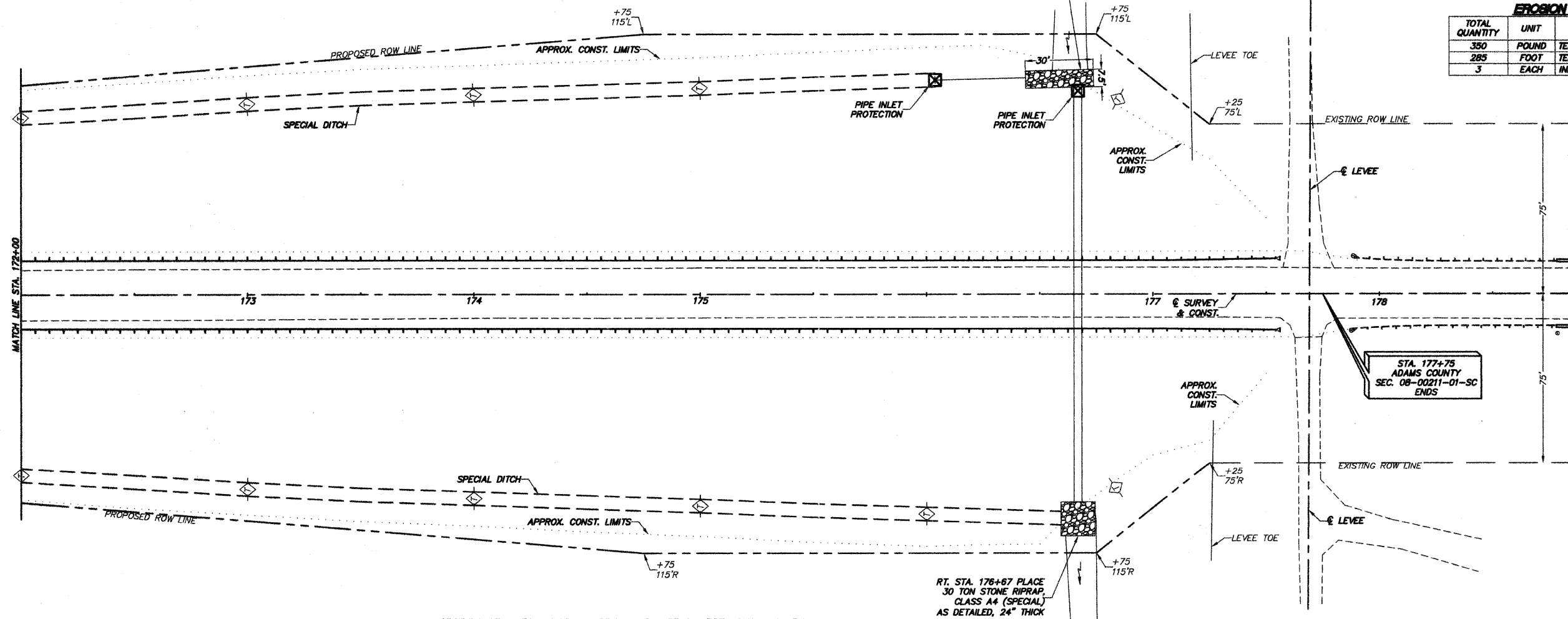
PROJECT NO. ER-0001(108) 93565			
COUNTY	ROUTE	SECTION	SHT. NO.
ADAMS	FAS 1800	08-00211-01-SC	22/22
STORMWATER POLLUTION PROTECTION PLAN			



LT. STA. 176+44 - 176+74 PLACE
30 TON STONE RIPRAP, CLASS A4
(SPECIAL) 7.5' WIDE x 24" THICK

EROSION AND SEDIMENT CONTROL

TOTAL QUANTITY	UNIT	ITEM
350	POUND	TEMPORARY EROSION CONTROL SEEDING
285	FOOT	TEMPORARY DITCH CHECKS
3	EACH	INLET AND PIPE PROTECTION



SECTION 27 - TOWNSHIP 2 NORTH - RANGE 9 WEST of the 4th P.M.