

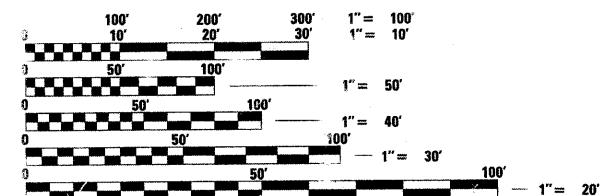
STATE OF ILLINOIS  
 DEPARTMENT OF TRANSPORTATION  
 DIVISION OF HIGHWAYS  
**CITY OF CARLINVILLE**  
**ITEP SIDEWALK PLANS**  
 SURFACE TRANSPORTATION ENHANCEMENT PROGRAM

F.A. RTE.	SECTION	COUNTY	TOTAL SHEETS	SHEET NO.
	10-00037-00-SW	MACOUPIN	18	1
FEDERAL AID PROJECT	ILLINOIS	CONTRACT NO. 93566		

**INDEX OF SHEETS**

- 1 COVER
- 2 SUMMARY OF QUANTITIES, LIST OF STANDARDS AND GENERAL NOTES
- 3 SCHEDULES OF QUANTITIES
- 4-6 PLAN AND PROFILE
- 7 EXISTING TOPOGRAPHY
- 8 EROSION CONTROL PLAN
- 9-18 CROSS-SECTIONS

**SECTION: 10-00037-00-SW**  
**PROJECT: TE-00D6(108)**  
**JOB #: C-96-214-12**  
**MACOUPIN COUNTY**

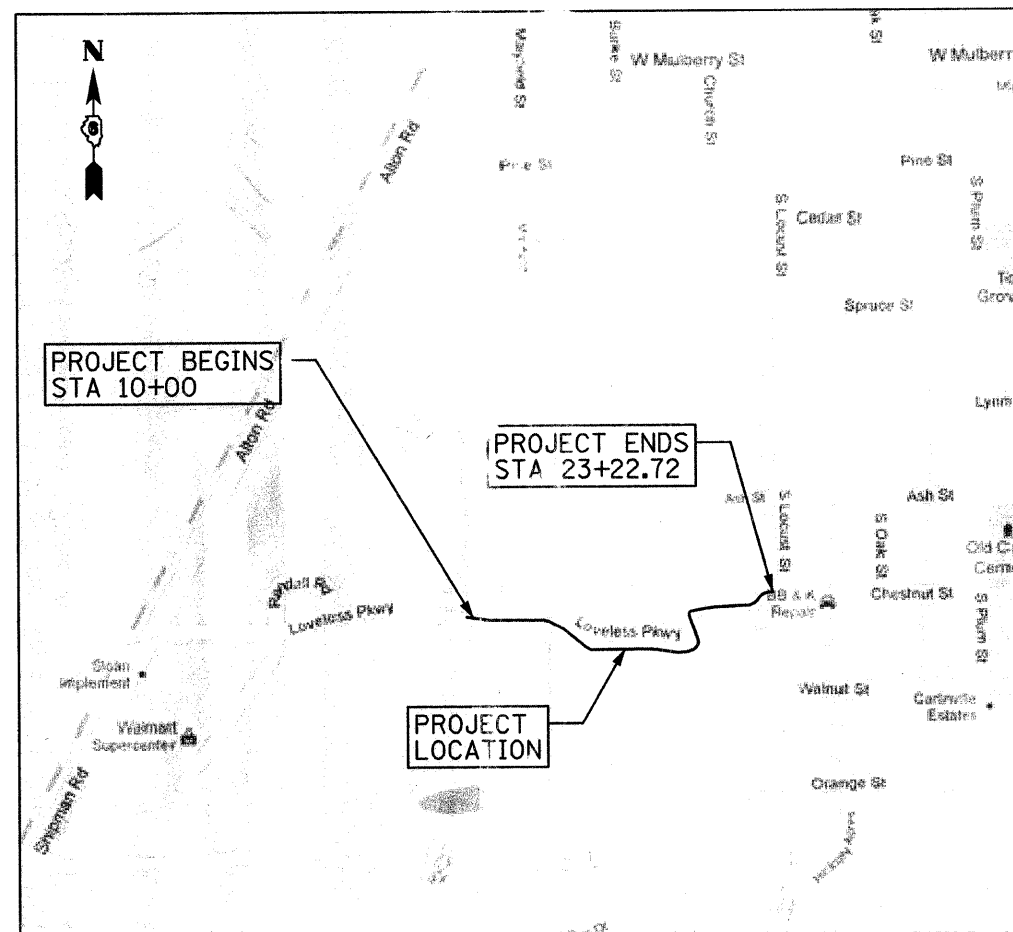


FULL SIZE PLANS HAVE BEEN PREPARED USING STANDARD ENGINEERING SCALES. REDUCED SIZED PLANS WILL NOT CONFORM TO STANDARD SCALES. IN MAKING MEASUREMENTS ON REDUCED PLANS, THE ABOVE SCALES MAY BE USED.

**U.L.I.E.**  
 JOINT UTILITY LOCATION INFORMATION FOR EXCAVATION  
 1-800-892-0123 OR 811

**PRINTED BY THE AUTHORITY  
 OF THE STATE OF ILLINOIS**

**PROJECT ENGINEER: SCOTT A. RAKERS**  
**PROJECT MANAGER: MARY BETH BELLM**



**LOCATION MAP**

APPROXIMATE SCALE IN FEET



**LENGTH OF IMPROVEMENTS = 1322.72 FEET = 0.251 MILES**



LOCATION OF SECTION INDICATED (THIS):

STATE OF ILLINOIS  
 DEPARTMENT OF TRANSPORTATION  
 DIVISION OF HIGHWAYS

SUBMITTED 01/05 20 12  
*Robert Schwab*  
 MAYOR OF THE CITY OF CARLINVILLE - ROBERT SCHWAB

PASSED 02/17 20 12  
*Terrence H. Fountain*  
 DISTRICT 6 ENGINEER OF LOCAL ROADS AND STREETS - TERRENCE H. FOUNTAIN

*Ronald L. Archambeau* 02/17/2012  
 DISTRICT 6 CONSTRUCTION ENGINEER - RONALD L. ARCHAMBEAU

RELEASING FOR  
 BID BASED ON  
 LIMITED REVIEW 02/17/2012  
*Roger L. Driskell*  
 DEPUTY DIRECTOR OF HIGHWAYS, REGION 4 ENGINEER - ROGER L. DRISKELL



*Scott A. Rakers* 12/23  
**SCOTT A. RAKERS, P.E.**  
 ILLINOIS REGISTERED ENGINEER NO. 062-049177  
 REGISTRATION EXPIRES NOV. 30, 2013



HMG Engineers, Inc.  
 1075 Lake Road • P.O. Box 70 • Carlyle, Illinois 62221  
 Phone: 618-594-3711 • Fax: 618-594-8217  
 www.hmgengineers.com

CONTRACT NO. 93566

SUMMARY OF QUANTITIES

CODE NO.	ITEM	UNIT	QUANTITY
20200100	EARTH EXCAVATION	CU YD	80
*20800150	TRENCH BACKFILL	CU YD	4
25000210	SEEDING, CLASS 2A	ACRE	0.50
25000400	NITROGEN FERTILIZER NUTRIENT	POUND	45
25000500	PHOSPHORUS FERTILIZER NUTRIENT	POUND	45
25000600	POTASSIUM FERTILIZER NUTRIENT	POUND	45
25000700	AGRICULTURAL GROUND LIMESTONE	TON	1
25100115	MULCH, METHOD 2	ACRE	0.5
28000250	TEMPORARY EROSION CONTROL SEEDING	POUND	35
28000500	INLET AND PIPE PROTECTION	EACH	4
*42400100	PORTLAND CEMENT CONCRETE SIDEWALK 4 INCH	SO FT	6,502
42400800	DETECTABLE WARNINGS	SO FT	20
44000600	SIDEWALK REMOVAL	SO FT	25
50105220	PIPE CULVERT REMOVAL	FOOT	50
54200215	PIPE CULVERTS, CLASS D, TYPE 1 10"	FOOT	37
54200220	PIPE CULVERTS, CLASS D, TYPE 1 15"	FOOT	12
67100100	MOBILIZATION	L SUM	1
72000100	SIGN PANEL - TYPE 1	SO FT	18
72900100	METAL POST - TYPE A	FOOT	25
Δ 78001150	PAINT PAVEMENT MARKING - LINE 12"	FOOT	46
*X7010216	TRAFFIC CONTROL AND PROTECTION, (SPECIAL)	L SUM	1

\* - SPECIAL PROVISION  
 Δ - SPECIALTY ITEMS

CONSTRUCTION TYPE CODE: 0021

GENERAL NOTES

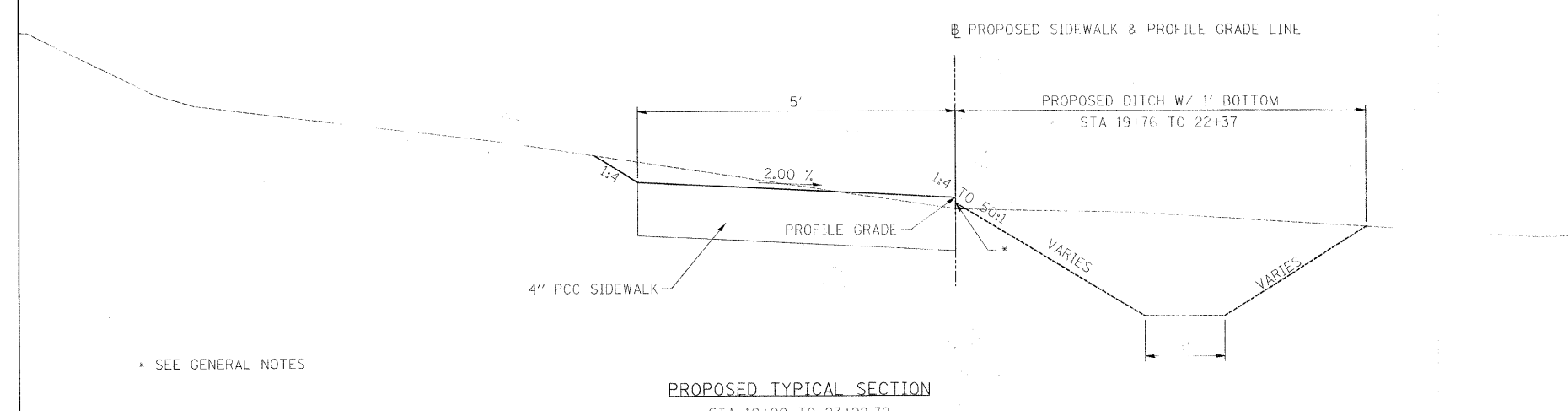
- ALL ELEVATIONS REFER TO U.S.G.S. MEAN SEA LEVEL DATUM.
- THE CONTRACTOR SHALL EXERCISE CARE IN PERFORMING REMOVALS SO AS NOT TO DISRUPT ADJOINING FEATURES THAT ARE TO REMAIN IN PLACE. ANY DAMAGE CAUSED TO ADJOINING FEATURES AS A RESULT OF THE CONTRACTOR'S NEGLIGENCE SHALL BE REPAIRED AT THE CONTRACTOR'S EXPENSE TO THE SATISFACTION OF THE ENGINEER.
- THE PRIME CONTRACTOR SHALL BE RESPONSIBLE FOR ALL SUB-CONTRACTED WORK, REGARDLESS OF FUNDING SOURCE. THE SPECIAL PROVISIONS, SPECIFICATIONS, AND STANDARD SPECIFICATIONS SHALL GOVERN CONTRACTUAL REQUIREMENTS FOR SAID ARRANGEMENTS.
- THE CONTRACTOR SHALL BE RESPONSIBLE FOR TRAFFIC CONTROL AND PROTECTION.
- ALL SAW CUTTING REQUIRED FOR REMOVALS SHALL BE INCLUDED IN THE CONTRACT UNIT PRICE PER UNIT OF REMOVAL QUANTITIES.
- THE CONTRACTOR SHALL EXERCISE CARE IN EXCAVATING AROUND EXISTING UTILITIES TO REMAIN IN PLACE, SUCH AS WATER AND SEWER MAINS, AND SHALL BE RESPONSIBLE FOR REPAIR OF THESE AND MAINTENANCE OF SERVICE, IF DAMAGED BY THE CONTRACTOR'S ACTIVITIES, AS DEEMED SUCH BY THE ENGINEER.
- THE CONTRACTOR SHALL BE RESPONSIBLE FOR ESTABLISHING POSITIVE DRAINAGE IN THE DISTURBED AREAS, TO THE SATISFACTION OF THE ENGINEER.
- ALL FINAL GRADING ELEVATIONS ALONG THE SIDEWALK SHALL BE KEPT ONE-HALF INCH BELOW SIDEWALK ELEVATION TO ENSURE PROPER DRAINAGE AFTER VEGETATION GROWTH. ANTICIPATING DISTURBANCES NECESSARY FOR CONSTRUCTION, SEEDING LIMITS ARE SHOWN AT A MINIMUM OF 5 FEET OFF EDGE OF SIDEWALK UNLESS EXISTING FEATURES PROHIBIT.
- ALL AREAS THAT ARE DISTURBED BEYOND THE SEEDING LIMITS SHALL BE GRADED BY THE CONTRACTOR AT HIS/HER EXPENSE, IN THE SAME MANNER AS FINAL GRADING WORK PER THE SPECIFICATIONS, TO THE SATISFACTION OF THE ENGINEER.
- IN ADDITION TO WARNING SIGNS SHOWN ON THE STANDARDS FOR TRAFFIC CONTROL, ROAD CONSTRUCTION AHEAD SIGNS SHALL BE PLACED ON INTERSECTING SIDE ROADS THROUGHOUT THE WORK ZONE.
- ALL ADVANCED WARNING SIGNS SHALL BE 48" FLUORESCENT ORANGE.
- WHERE SECTION OR SUB-SECTION MONUMENTS ARE ENCOUNTERED, THE ENGINEER SHALL BE NOTIFIED BEFORE SUCH MONUMENTS ARE REMOVED. THE CONTRACTOR SHALL PROTECT AND CAREFULLY PRESERVE ALL PROPERTY MARKERS AND MONUMENTS UNTIL THE OWNER, AN AUTHORIZED SURVEYOR, OR AGENT HAS WITNESSED OR OTHERWISE REFERENCED THEIR LOCATION.
- THE FOLLOWING RATES OF APPLICATION HAVE BEEN USED IN CALCULATING PLAN QUANTITIES.

APPLICATION RATES

NITROGEN FERTILIZER NUTRIENT	90 LBS/ACRE
PHOSPHORUS FERTILIZER NUTRIENT	90 LBS/ACRE
POTASSIUM FERTILIZER NUTRIENT	90 LBS/ACRE
AGRICULTURAL GROUND LIMESTONE	2 TONS/ACRE
TEMPORARY EROSION CONTROL SEEDING	100 LBS/ACRE

IDOT HIGHWAY STANDARDS

000001-06	STANDARD SYMBOLS, ABBREVIATIONS AND PATTERNS
280001-06	TEMPORARY EROSION CONTROL SYSTEMS
424016	MID-BLOCK CURB RAMPS FOR SIDEWALKS
701001-02	OFF RD OPERATIONS, 2L, 2W, MORE THAN 15' AWAY
701006-03	OFF RD OPERATIONS, 2L, 2W, 15' TO 24" FROM PAVEMENT EDGE
701011-02	OFF RD MOVING OPERATIONS, 2L, 2W, DAY ONLY
701301-04	LANE CLOSURE, 2L, 2W, SHORT TIME OPERATIONS
701801-05	SIDEWALK, CORNER, OR CROSSWALK CLOSURE
701901-02	TRAFFIC CONTROL DEVICES
720006-03	SIGN PANEL ERECTION DETAILS
720011-01	METAL POSTS FOR SIGNS, MARKERS & DELINEATORS
729001-01	APPLICATIONS OF TYPES A & B METAL POSTS



\* SEE GENERAL NOTES

KNOWN UTILITY COMPANIES

FRONTIER COMMUNICATIONS  
 ATTN: BILL DANIEL  
 10 COMMUNICATIONS DRIVE  
 SHAWANOE, WI 53590  
 TELEPHONE: (402) 250-1095

CARLINVILLE WATERWORKS  
 ATTN: MARY BETH BELLM  
 162 NORTH BROAD STREET  
 CARLINVILLE, IL 62626  
 TELEPHONE: (217) 854-5239

NEW WAVE COMMUNICATIONS  
 ATTN: LARRY HARMON  
 1 CLEARING  
 TAYLORVILLE, IL 62568  
 TELEPHONE: (217) 287-7992

AMEREN IP (SOUTH)  
 ATTN: MARTIN FULLER  
 1050 WEST BOULEVARD  
 BELLEVILLE, IL 62221  
 TELEPHONE: (618) 236-6111

LEVEL 3 COMMUNICATIONS  
 TELEPHONE: (817) 366-8344

MCI  
 ATTN: DEAN BOYI  
 2400 NORTH GLENVIEW DRIVE  
 RICHARDSON, TX 75082  
 TELEPHONE: (972) 99-6322

SPRINT  
 ATTN: JAM BURTON  
 TELEPHONE: (847) 437-1270

KLOBUCHAR  
 130 MA  
 BUTTE, MO  
 TELEPHONE: (661) 496-6510

**EARTHWORK SCHEDULE**

LOCATION	A	B	C	D	E
	* EARTH EXCAVATION CU YD	SHRINKAGE FACTOR (15%) CU YD	REQUIRED FILL CU YD	BALANCE CU YD	EXCESS MATERIAL CU YD
ITEP SIDEWALK					
STA 10+00.00 TO STA 12+50.00	18.8	16.0	-	16.0	-16.0
STA 12+50.00 TO STA 15+00.00	14.3	12.2	0.1	12.1	-12.1
STA 15+00.00 TO STA 17+50.00	16.1	13.7	0.2	13.5	-13.5
STA 17+50.00 TO STA 19+43.91	4.1	3.5	12.1	-8.6	8.6
STA 19+43.91 TO STA 19+66.31	-	-	-	-	-
STA 19+66.31 TO STA 23+22.72	23.1	19.6	22.4	-2.8	2.8
<b>TOTAL</b>	<b>76.4</b>	<b>64.9</b>	<b>34.8</b>	<b>30.1</b>	<b>-30.1</b>
<b>USE</b>	<b>80</b>	<b>65</b>	<b>35</b>	<b>35</b>	<b>35</b>

\* - DENOTES PAY ITEM

**NOTES:**

COLUMN "A" HAS BEEN ESTIMATED FROM CROSS SECTION END AREAS.  
 COLUMN "B" IS A 15% SHRINKAGE FACTOR APPLIED TO THE ORIGINAL EARTH EXCAVATION.  
 COLUMN "C" HAS BEEN ESTIMATED FROM CROSS SECTION END AREAS.  
 COLUMN "D" IS COLUMN "B" MINUS COLUMN "C". "-" REQUIRES FURNISHED MATERIAL.  
 COLUMN "E" IS THE ESTIMATED AMOUNT OF MATERIAL THAT SHALL BE REMOVED FROM THE SITE.

**SIDEWALK PAVING SCHEDULE**

LOCATION	PORTLAND CEMENT CONCRETE SIDEWALK 4 INCH	SIDEWALK REMOVAL	DETECTABLE WARNINGS	PAINT PAVEMENT MARKING - LINE 12"
	SQ FT	SQ FT	SQ FT	FOOT
ITEP SIDEWALK				
STA 10+00.00 TO STA 12+50.00	1250.0			
STA 12+50.00 TO STA 15+00.00	1250.0			
STA 15+00.00 TO STA 17+50.00	1250.0	24.6		
STA 17+50.00 TO STA 19+43.91	969.6			
STA 19+43.91 TO STA 19+66.31				46.0
STA 19+66.31 TO STA 23+22.72	1782.1			
STA 19+42.41			10.00	
STA 19+67.81			10.00	
<b>TOTAL</b>	<b>6,501.70</b>	<b>24.64</b>	<b>20.00</b>	<b>46.0</b>
<b>USE</b>	<b>6,502.0</b>	<b>25.0</b>	<b>20</b>	<b>46</b>

**SEEDING SCHEDULE**

LOCATION	TEMPORARY EROSION CONTROL SEEDING	SEEDING CLASS 2A	MULCH, METHOD 2	NITROGEN FERTILIZER NUTRIENT	PHOSPHORUS FERTILIZER NUTRIENT	POTASSIUM FERTILIZER NUTRIENT	AGRICULTURAL GROUND LIMESTONE
	POUND	ACRE	ACRE	POUND	POUND	POUND	TON
ITEP SIDEWALK							
STA 10+00.00 TO STA 12+50.00	4.84	0.048	0.048	4.36	4.36	4.36	0.0
STA 12+50.00 TO STA 15+00.00	5.08	0.051	0.051	4.57	4.57	4.57	0.10
STA 15+00.00 TO STA 17+50.00	4.90	0.049	0.049	4.41	4.41	4.41	0.10
STA 17+50.00 TO STA 19+43.91	3.01	0.030	0.030	2.71	2.71	2.71	0.06
STA 19+43.91 TO STA 19+66.31	-	-	-	-	-	-	-
STA 19+66.31 TO STA 23+22.72	12.89	0.129	0.129	11.60	11.60	11.60	0.26
<b>TOTAL</b>	<b>30.7</b>	<b>0.31</b>	<b>0.31</b>	<b>27.65</b>	<b>27.65</b>	<b>27.65</b>	<b>0.61</b>
<b>USE</b>	<b>35</b>	<b>0.50</b>	<b>0.50</b>	<b>45</b>	<b>45</b>	<b>45</b>	<b>1</b>

**EROSION CONTROL SCHEDULE**

LOCATION	INLET AND PIPE PROTECTION
EACH	
ITEP SIDEWALK	
LT STA 18+19.43 8.44'	1.0
RT STA 19+76.26 2.95'	1.0
LT STA 22+02.57 7.53'	1.0
RT STA 22+36.85 22.67'	1.0
<b>TOTAL</b>	<b>4.0</b>
<b>USE</b>	<b>4</b>

**CULVERT AND STORM SEWER SCHEDULE**

LOCATION	TYPE	PIPE CULVERT REMOVAL	PIPE CULVERTS, CLASS D		TRENCH BACKFILL
			TYPE 1, 10"	TYPE 1, 15"	
			FOOT	FOOT	CU YD
ITEP SIDEWALK					
STA 18+17.86 RT 3.46' TO STA 18+19.43 LT 8.44'				12.00	1.20
STA 19+71.43 LT 8.86' TO STA 19+76.26 RT 2.95'			13.00		1.00
STA 19+78.53 RT 4.71' TO STA 20+03.77 RT 7.31'	RCP	20.00			
STA 20+89.58 RT 8.88' TO STA 21+19.96 RT 9.04'	RCP	30.00			
STA 22+02.53 LT 7.50' TO STA 22+09.51 RT 3.48'			24.00		1.80
<b>TOTAL</b>		<b>50.00</b>	<b>37.00</b>	<b>12.00</b>	<b>4.0</b>
<b>USE</b>		<b>50</b>	<b>37</b>	<b>12</b>	<b>4</b>

**SIGN SCHEDULE**

LOCATION	SIGN PANEL ID	SIGN PANEL - TYPE 1	METAL POST - TYPE B
		SQ FT	FOOT
ITEP SIDEWALK			
LT STA 19+40.29 25.0'	R1-5	9.00	12.5
RT STA 20+01.26 10.84'	R1-5	9.00	12.5
<b>TOTAL</b>		<b>18.00</b>	<b>25.0</b>
<b>USE</b>		<b>18.0</b>	<b>25</b>

PLAN	DATE
BY	
NO.	
NO.	
NO.	
NO.	

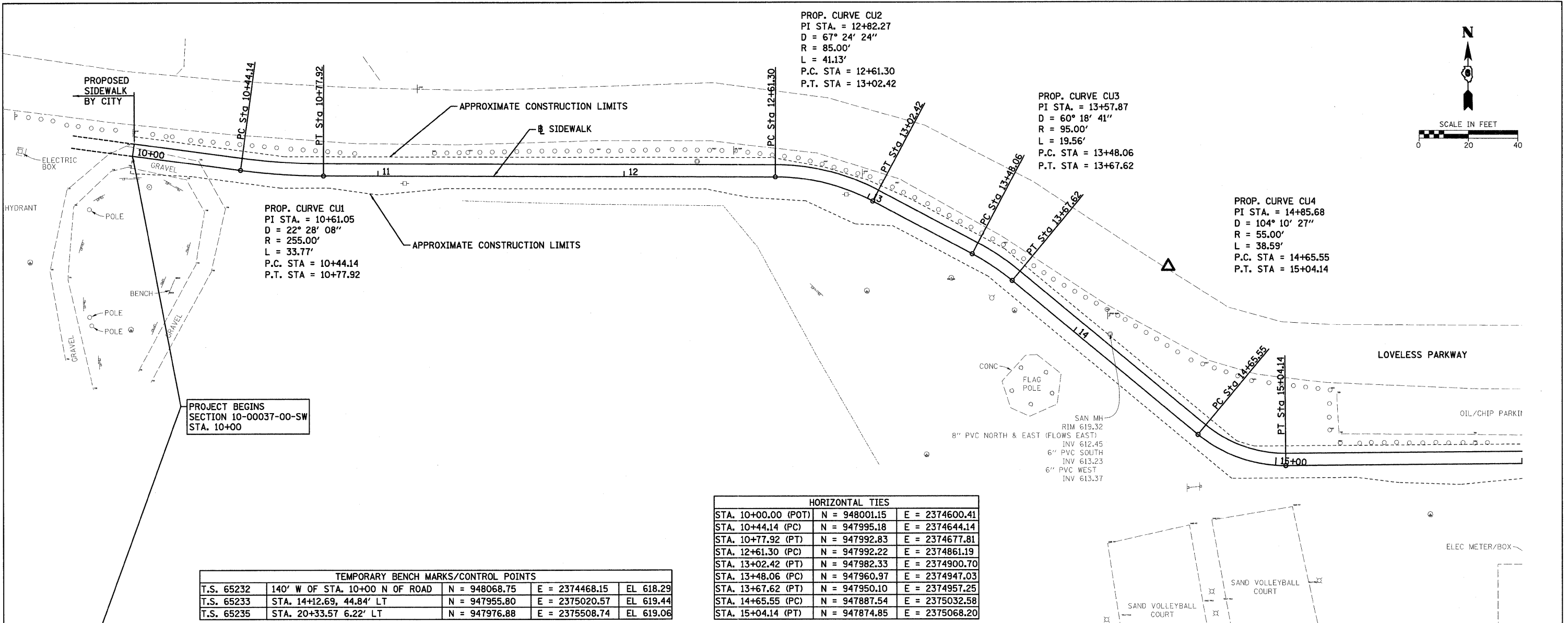
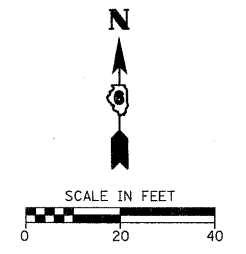
PROFILE	DATE
BY	
NO.	
NO.	
NO.	
NO.	

PROP. CURVE CU2  
 PI STA. = 12+82.27  
 D = 67° 24' 24"  
 R = 85.00'  
 L = 41.13'  
 P.C. STA = 12+61.30  
 P.T. STA = 13+02.42

PROP. CURVE CU3  
 PI STA. = 13+57.87  
 D = 60° 18' 41"  
 R = 95.00'  
 L = 19.56'  
 P.C. STA = 13+48.06  
 P.T. STA = 13+67.62

PROP. CURVE CU4  
 PI STA. = 14+85.68  
 D = 104° 10' 27"  
 R = 55.00'  
 L = 38.59'  
 P.C. STA = 14+65.55  
 P.T. STA = 15+04.14

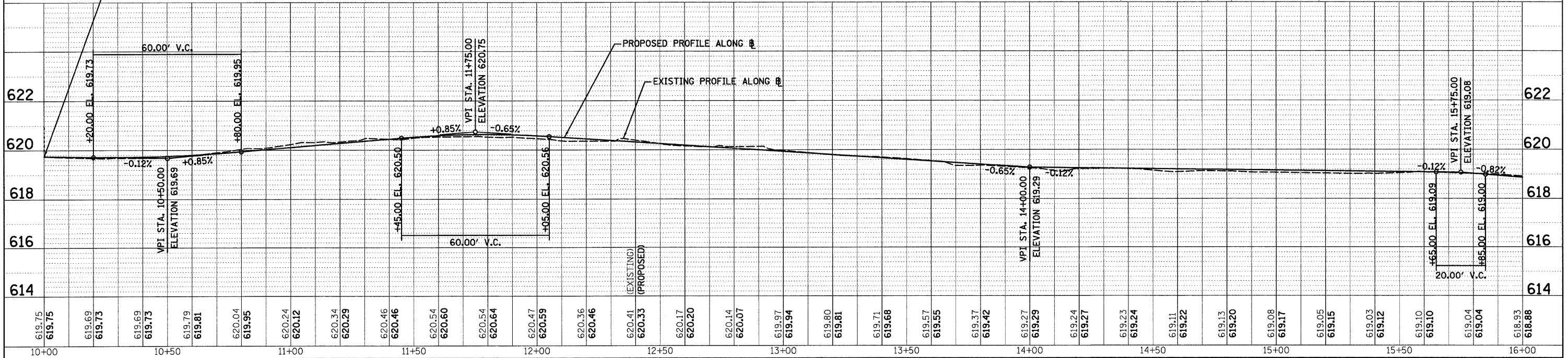
PROP. CURVE CU1  
 PI STA. = 10+61.05  
 D = 22° 28' 08"  
 R = 255.00'  
 L = 33.77'  
 P.C. STA = 10+44.14  
 P.T. STA = 10+77.92



PROJECT BEGINS  
 SECTION 10-00037-00-SW  
 STA. 10+00

HORIZONTAL TIES		
STA. 10+00.00 (POT)	N = 948001.15	E = 2374600.41
STA. 10+44.14 (PC)	N = 947995.18	E = 2374644.14
STA. 10+77.92 (PT)	N = 947992.83	E = 2374677.81
STA. 12+61.30 (PC)	N = 947992.22	E = 2374861.19
STA. 13+02.42 (PT)	N = 947982.33	E = 2374900.70
STA. 13+48.06 (PC)	N = 947960.97	E = 2374947.03
STA. 13+67.62 (PT)	N = 947950.10	E = 2374957.25
STA. 14+65.55 (PC)	N = 947887.54	E = 2375032.58
STA. 15+04.14 (PT)	N = 947874.85	E = 2375068.20

TEMPORARY BENCH MARKS/CONTROL POINTS				
T.S. 65232	140' W OF STA. 10+00 N OF ROAD	N = 948068.75	E = 2374468.15	EL 618.29
T.S. 65233	STA. 14+12.69, 44.84' LT	N = 947955.80	E = 2375020.57	EL 619.44
T.S. 65235	STA. 20+33.57 6.22' LT	N = 947976.88	E = 2375508.74	EL 619.06



FILE NAME =	USER NAME = _USERDESCR_	DESIGNED - ARG	REVISED - ARG 11-30-2011	<b>STATE OF ILLINOIS</b> <b>DEPARTMENT OF TRANSPORTATION</b>		<b>LOVELESS PARK ITEP SIDEWALK</b> <b>PLAN AND PROFILE</b>		F.A. RTE.	SECTION	COUNTY	TOTAL SHEETS	SHEET NO.
H:\6523 CarlInville ITEP Sidewalk Loveless	P_6523.dgn	DRAWN - ARG	REVISED -					10-00037-00-SW	MACOUPIN	18	4	
PLOT SCALE = 20.0000' / IN.	CHECKED - SAR	REVISED -	REVISED -					CONTRACT NO. 93566				
PLOT DATE = 12/29/2011	DATE - 10-12-2011	REVISED -	REVISED -					ILLINOIS FED. AID PROJECT				
SCALE: 1" = 20'		SHEET NO. OF SHEETS		STA. TO STA.								



R1-5 (36X36)

PROP. CURVE CU8  
 PI STA. = 19+83.31  
 D = 381° 58' 19"  
 R = 15.00'  
 L = 25.56'  
 P.C. STA = 19+66.17  
 P.T. STA = 19+91.73

REMOVE EXISTING CULVERT  
 PIPE CULVERTS, CLASS D, TY. 1, 10"  
 13 FT @ 0.69%, SKEW 3.03° RT HAND FRONT

STA. 20+00  
 OFF. 6.49' RT  
 ELV. 618.27

STA. 20+50  
 OFF. 7.09' RT  
 ELV. 618.41

STA. 21+00  
 OFF. 8.41' RT  
 ELV. 618.56

STA. 21+50  
 OFF. 8.43' RT  
 ELV. 618.38

INV. 618.04  
 INV. 618.13

SIGN PANEL, R1-5  
 STA. 20+01.26  
 10.84' RT

PAVEMENT MARKING,  
 LINE 12" (WHITE)

CATCH BASIN  
 RIM 619.03  
 12" CPP EAST & WEST  
 INV 617.70

PROP. CURVE CU9  
 PI STA. = 20+70.87  
 D = 11° 27' 33"  
 R = 500.00'  
 L = 67.84'  
 P.C. STA = 20+36.89  
 P.T. STA = 21+04.73

PROP. CURVE CU7  
 PI STA. = 19+16.19  
 D @ 163° 42' 08"  
 R = 35.00'  
 L = 55.33'  
 P.C. STA = 18+80.84  
 P.T. STA = 19+36.17

SIGN PANEL, R1-5  
 STA. 19+40.29  
 OFF. 25.00' LT

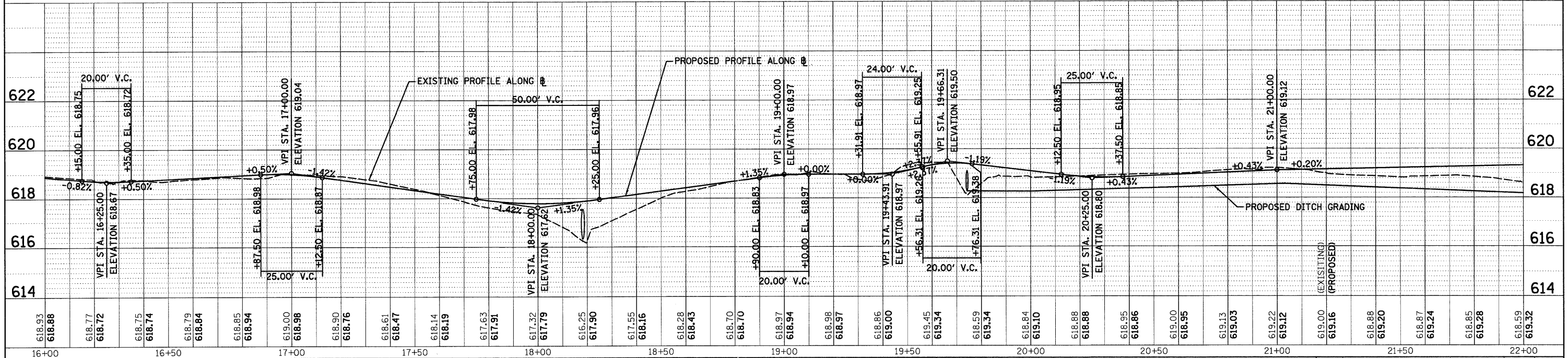
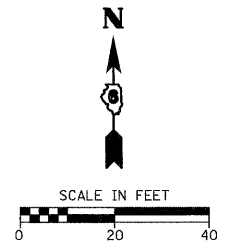
PROP. CURVE CU6  
 PI STA. = 18+43.02  
 D = 36° 57' 54"  
 R = 155.00'  
 L = 70.06'  
 P.C. STA = 18+07.37  
 P.T. STA = 18+77.44

STA. 18+18.29  
 PIPE CULVERTS, CLASS D, TY. 1, 15"  
 12 FT @ 1.0%, 3.19° SKEW LT HAND FRONT

PROP. CURVE CU5  
 PI STA. = 17+30.90  
 D = 19° 45' 26"  
 R = 290.00'  
 L = 46.57'  
 P.C. STA = 17+07.57  
 P.T. STA = 17+54.14

HORIZONTAL TIES		
STA. 17+07.57 (PC)	N = 947876.61	E = 2375271.62
STA. 17+54.14 (PT)	N = 947873.28	E = 2375318.02
STA. 18+07.37 (PC)	N = 947865.22	E = 2375370.64
STA. 18+77.44 (PT)	N = 947870.36	E = 2375439.92
STA. 18+80.84 (PC)	N = 947871.37	E = 2375443.17
STA. 19+36.17 (PT)	N = 947915.48	E = 2375466.16
STA. 19+66.17 (PC)	N = 947944.05	E = 2375457.00
STA. 19+91.73 (PT)	N = 947963.40	E = 2375468.65
STA. 20+36.89 (PC)	N = 947971.35	E = 2375513.10
STA. 21+04.73 (PT)	N = 947978.73	E = 2375580.49

TEMPORARY BENCH MARKS/CONTROL POINTS				
T.S. 65233	STA. 14+12.69, 44.84' LT	N = 947955.80	E = 2375020.57	EL 619.44
T.S. 65235	STA. 20+33.57 6.22' LT	N = 947976.88	E = 2375508.74	EL 619.06
T.S. 65236	45' S OF STA. 23+22 E OF ROAD	N = 947988.61	E = 2375814.28	EL 619.22



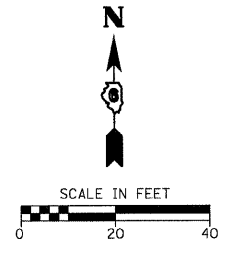
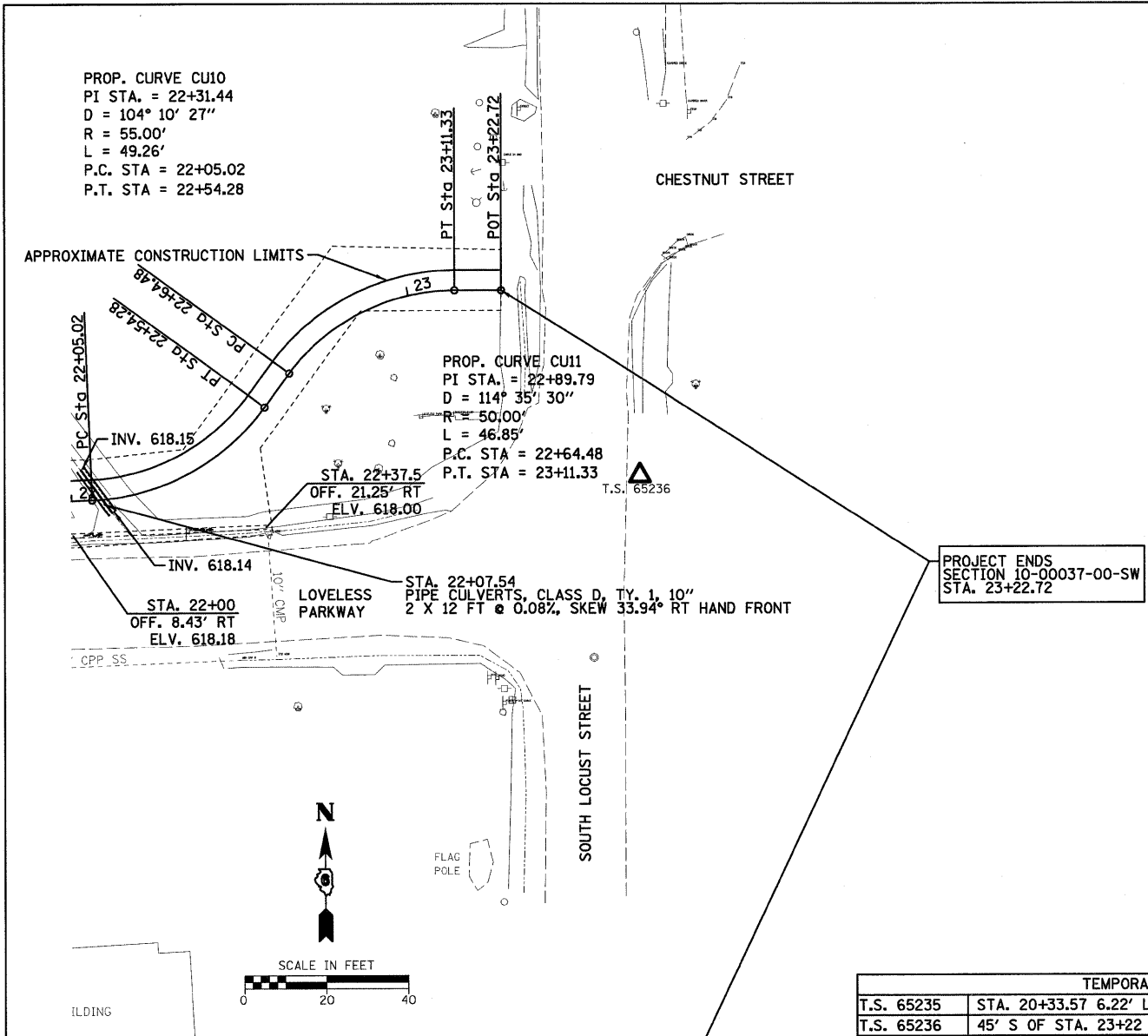
FILE NAME = H:\6523 Carolinville_ITEP_Sidewalk_Loveless\&P2_6523.dgn	USER NAME = USERDESCR	DESIGNED - ARG	REVISED - ARG 11-30-2011	<b>STATE OF ILLINOIS DEPARTMENT OF TRANSPORTATION</b>	<b>LOVELESS PARK ITEP SIDEWALK PLAN AND PROFILE</b>			F.A. R.T.E.	SECTION	COUNTY	TOTAL SHEETS	SHEET NO.
PLOT SCALE = 20.0000' / IN.	CHECKED - SAR	REVISIED -	REVISIED -		SCALE: 1" = 20'	SHEET NO.	OF SHEETS	STA.	TO STA.	MACOUPIN	18	5
PLOT DATE = 12/29/2011	DATE - 10-12-2011	REVISIED -	REVISIED -		CONTRACT NO. 9 3 5 6 6							
ILLINOIS FED. AID PROJECT												

PLAN	SURVEYED	BY	DATE
NOTE BOOK	ALIGNED		
NO.	FILE NAME		

PROFILE	SURVEYED	BY	DATE
NOTE BOOK	GRADES CHECKED		
NO.	STRUCTURE NOTATIONS (CHD)		

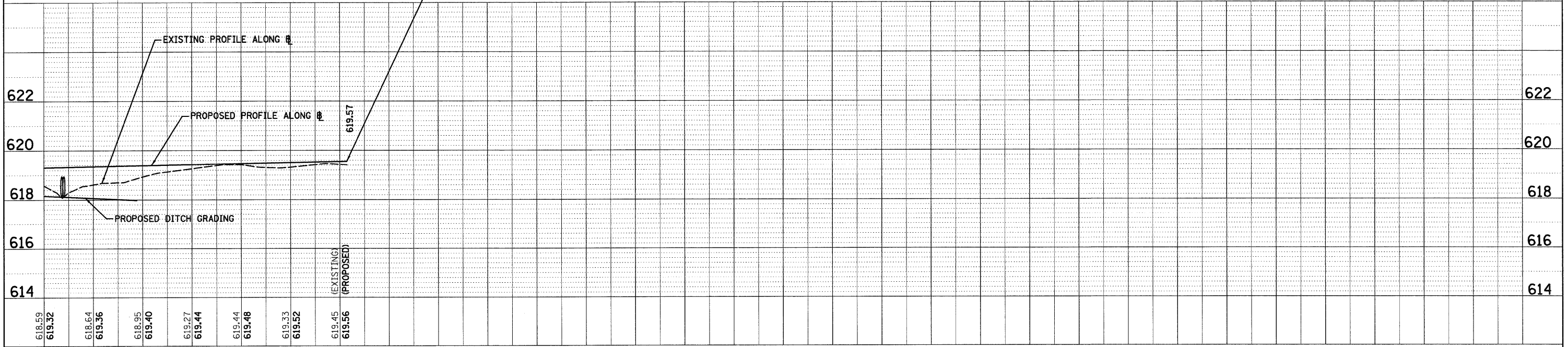
DATE	
BY	
REVIEWED	
NOTED	
ALIGNED	
CHECKED	
NO.	
FILE NAME	

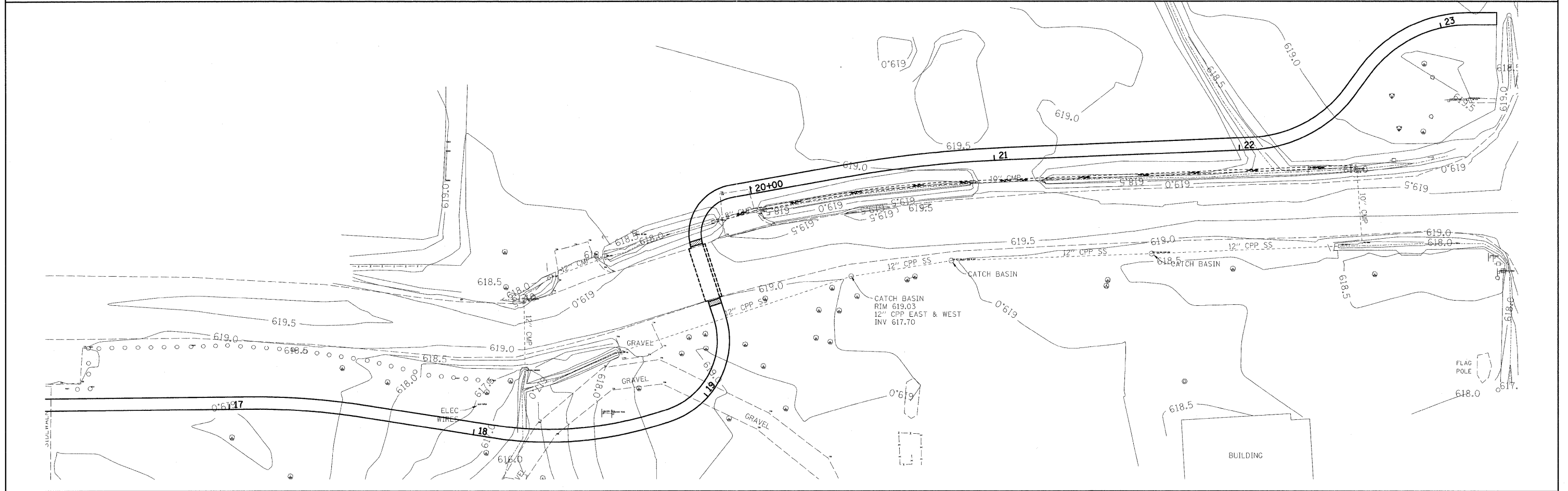
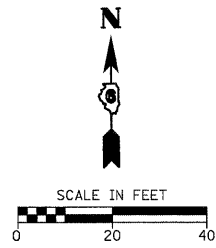
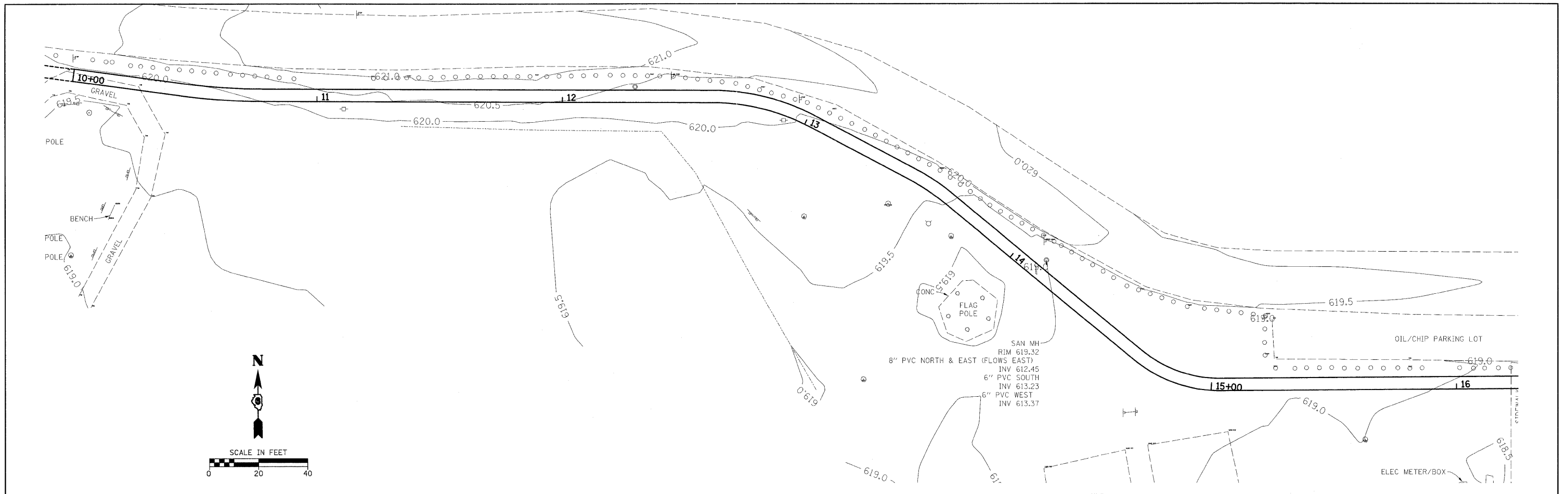
DATE	
BY	
REVIEWED	
NOTED	
GRADES	
CHECKED	
NO.	
STRUCTURE	
NOTATIONS	
CHPO	



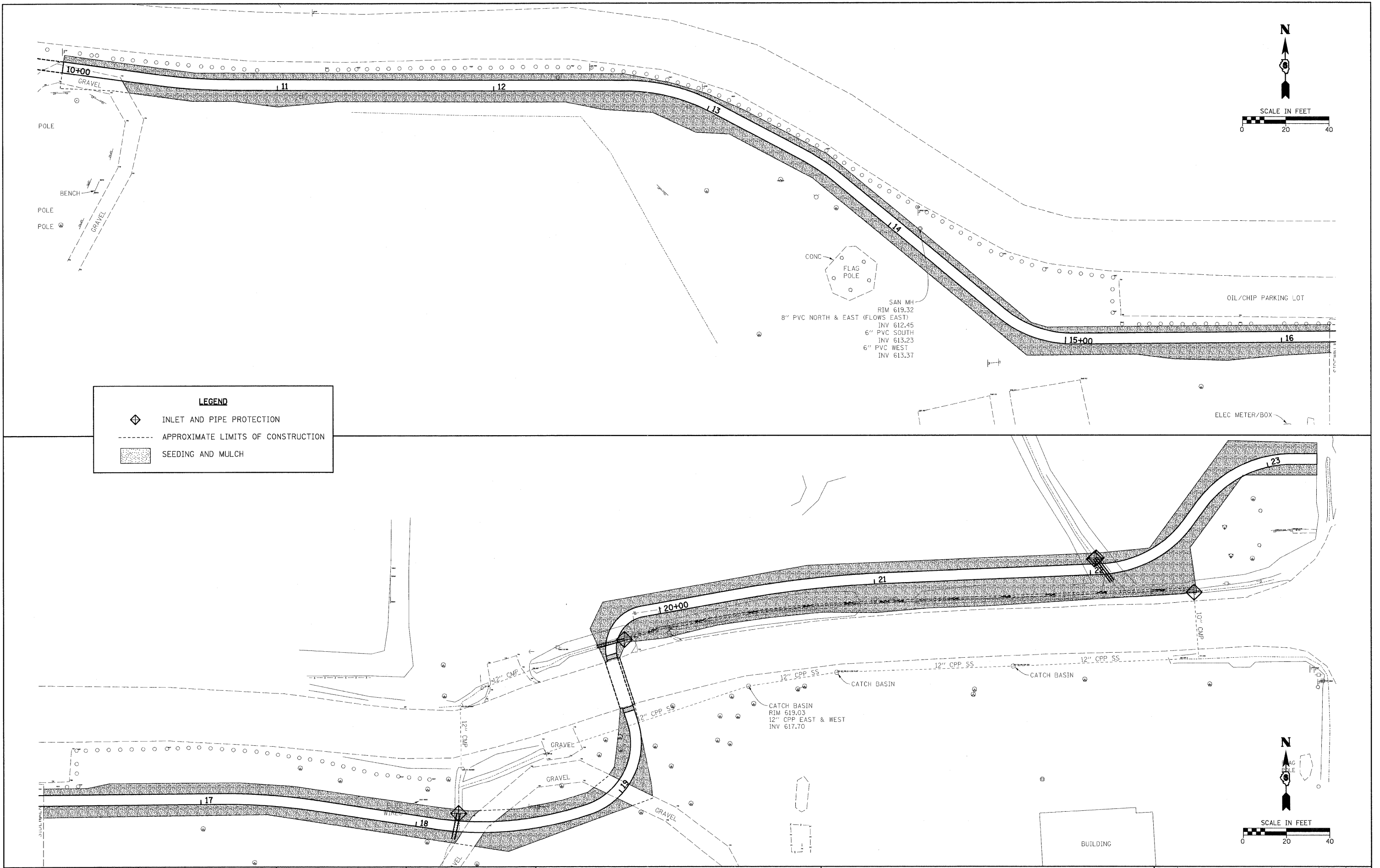
TEMPORARY BENCH MARKS/CONTROL POINTS				
T.S. 65235	STA. 20+33.57 6.22' LT	N = 947976.88	E = 2375508.74	EL 619.06
T.S. 65236	45' S OF STA. 23+22 E OF ROAD	N = 947988.61	E = 2375814.28	EL 619.22

HORIZONTAL TIES		
STA. 22+05.02 (PC)	N = 947982.88	E = 2375680.68
STA. 22+54.28 (PT)	N = 948005.26	E = 2375722.73
STA. 22+64.48 (PC)	N = 948013.48	E = 2375728.77
STA. 23+11.33 (PT)	N = 948033.87	E = 2375769.06
STA. 23+22.72 (POT)	N = 948033.87	E = 2375780.45



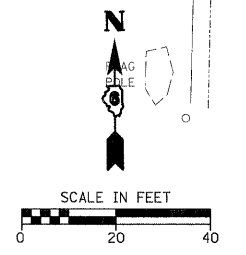
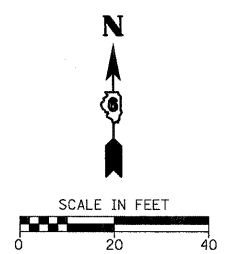


FILE NAME = H:\6523 Carlinville ITEP Sidewalk Loveless	USER NAME = _USERDESCR_ EXIST_FEATURES_6523.dgn	DESIGNED - ARG	REVISED - ARG 11-30-2011	<b>STATE OF ILLINOIS DEPARTMENT OF TRANSPORTATION</b>	<b>LOVELESS PARK ITEP SIDEWALK EXISTING TOPOGRAPHY</b>			F.A. RTE.	SECTION	COUNTY	TOTAL SHEETS	SHEET NO.
	PLOT SCALE = 20.0000' / IN.	DRAWN - ARG	REVISED -		SCALE: 1" = 20'	SHEET NO.	OF	SHEETS	STA.	TO STA.	18	7
	PLOT DATE = 12/29/2011	CHECKED - SAR	REVISED -		CONTRACT NO. 9 3 5 6 6							
		DATE - 10-12-2011	REVISED -		ILLINOIS FED. AID PROJECT							



**LEGEND**

- INLET AND PIPE PROTECTION
- APPROXIMATE LIMITS OF CONSTRUCTION
- SEEDING AND MULCH



FILE NAME = H:\6523 Carlinville ITEP Sidewalk Loveless

USER NAME = \_USERDESCR.  
 EROS\_CONTROL\_6523.dgn  
 PLOT SCALE = 20.0000' / 1" IN.  
 PLOT DATE = 12/29/2011

DESIGNED - ARG  
 DRAWN - ARG  
 CHECKED - SAR  
 DATE - 10-12-2011

REVISED - ARG 11-30-2011  
 REVISED -  
 REVISED -  
 REVISED -

**STATE OF ILLINOIS  
 DEPARTMENT OF TRANSPORTATION**

**LOVELESS PARK ITEP SIDEWALK  
 EROSION CONTROL PLAN**

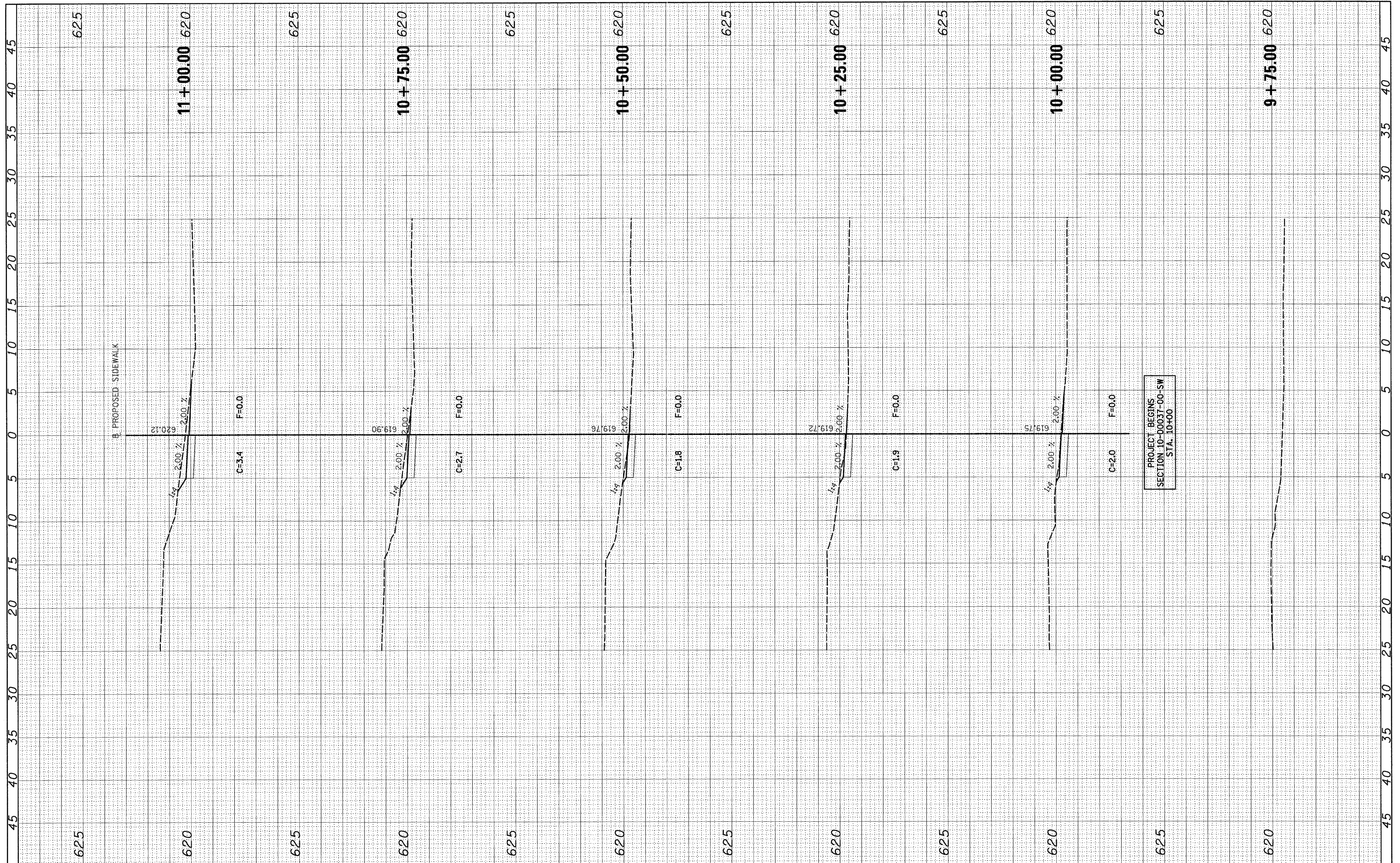
SCALE: 1" = 20'    SHEET NO.    OF    SHEETS    STA.    TO STA.

F.A. RTE.	SECTION	COUNTY	TOTAL SHEETS	SHEET NO.
	10-00037-00-SW	MACOUPIN	18	8
CONTRACT NO. 9 9 5 6 6				
ILLINOIS FED. AID PROJECT				



FINAL SURVEY	SURVEYED	BY	DATE
NOTE BOOK	PLLOT ID		
NO.	NO.		
	AREAS CHECKED		
	AREAS CHECKED		

ORIGINAL SURVEY	SURVEYED	BY	DATE
NOTE BOOK	PLLOT ID		
NO.	NO.		
	AREAS CHECKED		
	AREAS CHECKED		



FILE NAME = H:\6523 Carlinville.ITEP.Sidewalk.Loveless\XS.SHEETS\_6523.dgn  
 USER NAME = \_USERDESCR.  
 DESIGNED - ARG  
 DRAWN - ARG  
 CHECKED - SAR  
 DATE - 10-14-2011

REVISIONS  
 REVISED - ARG 11-30-2011  
 REVISED -  
 REVISED -  
 REVISED -

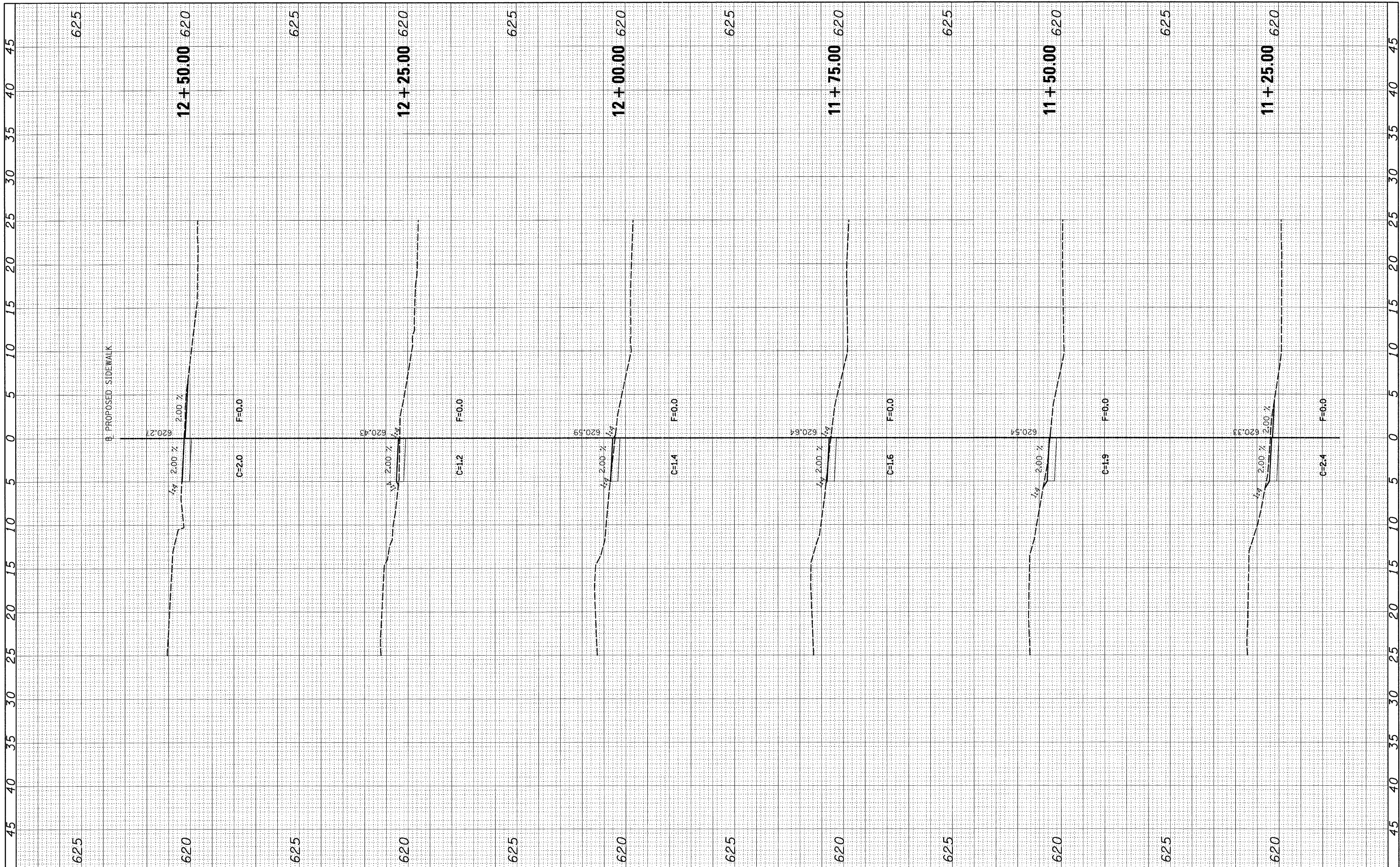
STATE OF ILLINOIS  
 DEPARTMENT OF TRANSPORTATION

LOVELESS PARK ITEP SIDEWALK  
 CROSS SECTIONS  
 SCALE: SHEET NO. OF SHEETS STA. 9+75.00 TO STA. 11+00.00

F.A. RTE.	SECTION	COUNTY	TOTAL SHEETS	SHEET NO.
	10-00037-00-SW	MACOUPIN	18	9
CONTRACT NO. 93566				
ILLINOIS FED. AID PROJECT				

FINAL SURVEY	SURVEYED	BY	DATE
NOTE BOOK	NO. _____		
AREAS CHECKED			

ORIGINAL SURVEY	SURVEYED	BY	DATE
NOTE BOOK	NO. _____		
AREAS CHECKED			



FILE NAME = H:\6523 Carlinville ITEP Sidewalk Loveless\XS.SHEETS\_6523.dgn  
 PLOT SCALE = 5,0000 ' / IN.  
 PLOT DATE = 12/29/2011

DESIGNED - ARG  
 DRAWN - ARG  
 CHECKED - SAR  
 DATE - 10-14-2011

REVISED - ARG 11-30-2011  
 REVISED -  
 REVISED -  
 REVISED -

**STATE OF ILLINOIS  
 DEPARTMENT OF TRANSPORTATION**

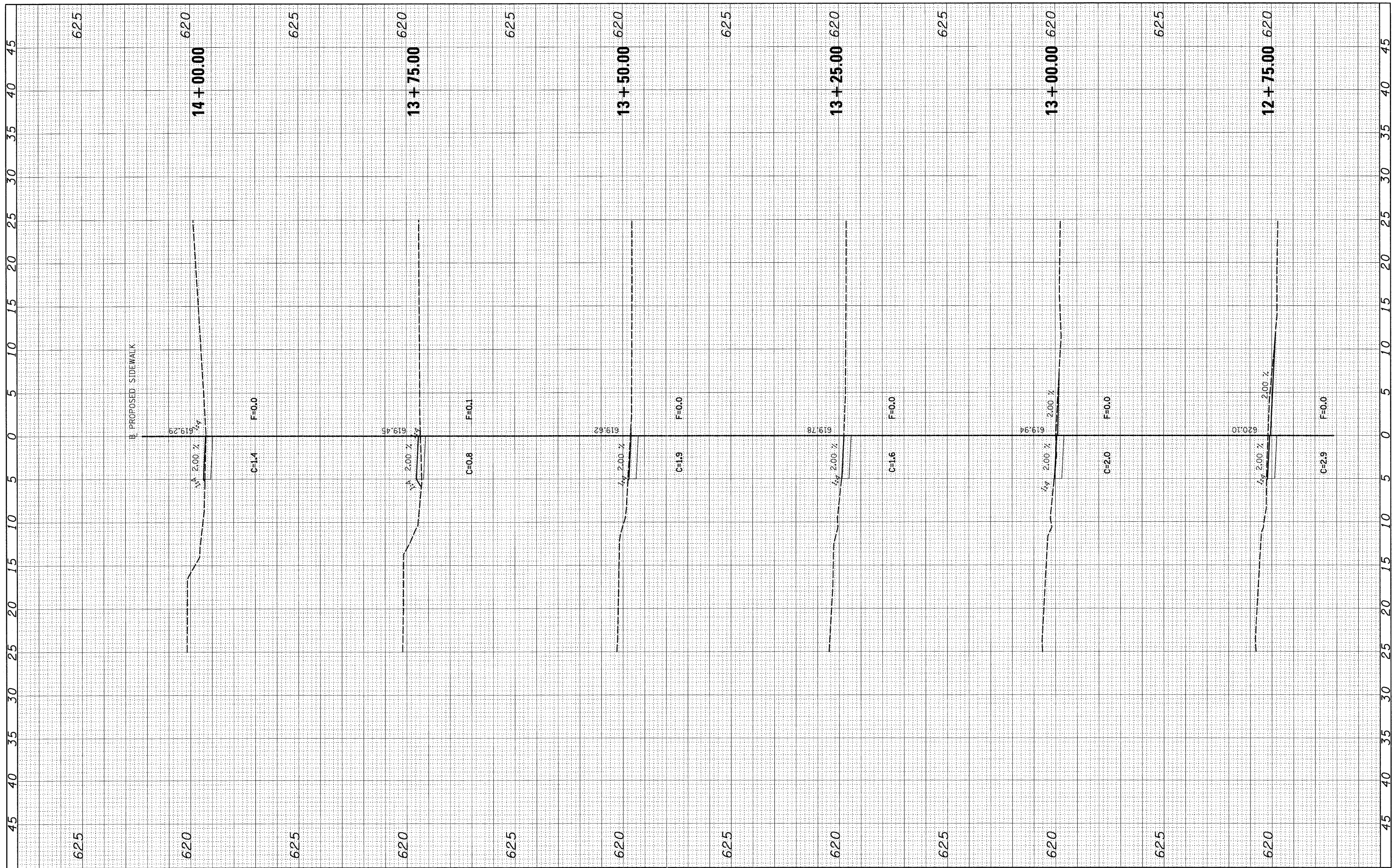
**LOVELESS PARK ITEP SIDEWALK  
 CROSS SECTIONS**

SCALE: SHEET NO. OF SHEETS STA. 11+25.00 TO STA. 12+50.00

F.A. RTE.	SECTION	COUNTY	TOTAL SHEETS	SHEET NO.
	10-00037-00-SW	MACOUPIN	18	10
CONTRACT NO. 93566			ILLINOIS FED. AID PROJECT	

FINAL SURVEY	DATE
SURVEYED	BY
NOTE BOOK	
TEMPLATE	
AREAS CHECKED	
NO.	

ORIGINAL SURVEY	DATE
SURVEYED	BY
NOTE BOOK	
TEMPLATE	
AREAS CHECKED	
NO.	



FILE NAME = H:\6523 Carlinville\_ITEP\_Sidewalk\_Loveless\XS\_SHEETS\_6523.dgn  
 USER NAME = \_USERDESCR.  
 DESIGNED - ARG  
 DRAWN - ARG  
 CHECKED - SAR  
 DATE - 10-14-2011

PLOT SCALE = 5.0000' / IN.  
 PLOT DATE = 12/29/2011

REVISOR  
 REVISION  
 REVISION  
 REVISION

REVISOR  
 REVISION  
 REVISION  
 REVISION

**STATE OF ILLINOIS  
 DEPARTMENT OF TRANSPORTATION**

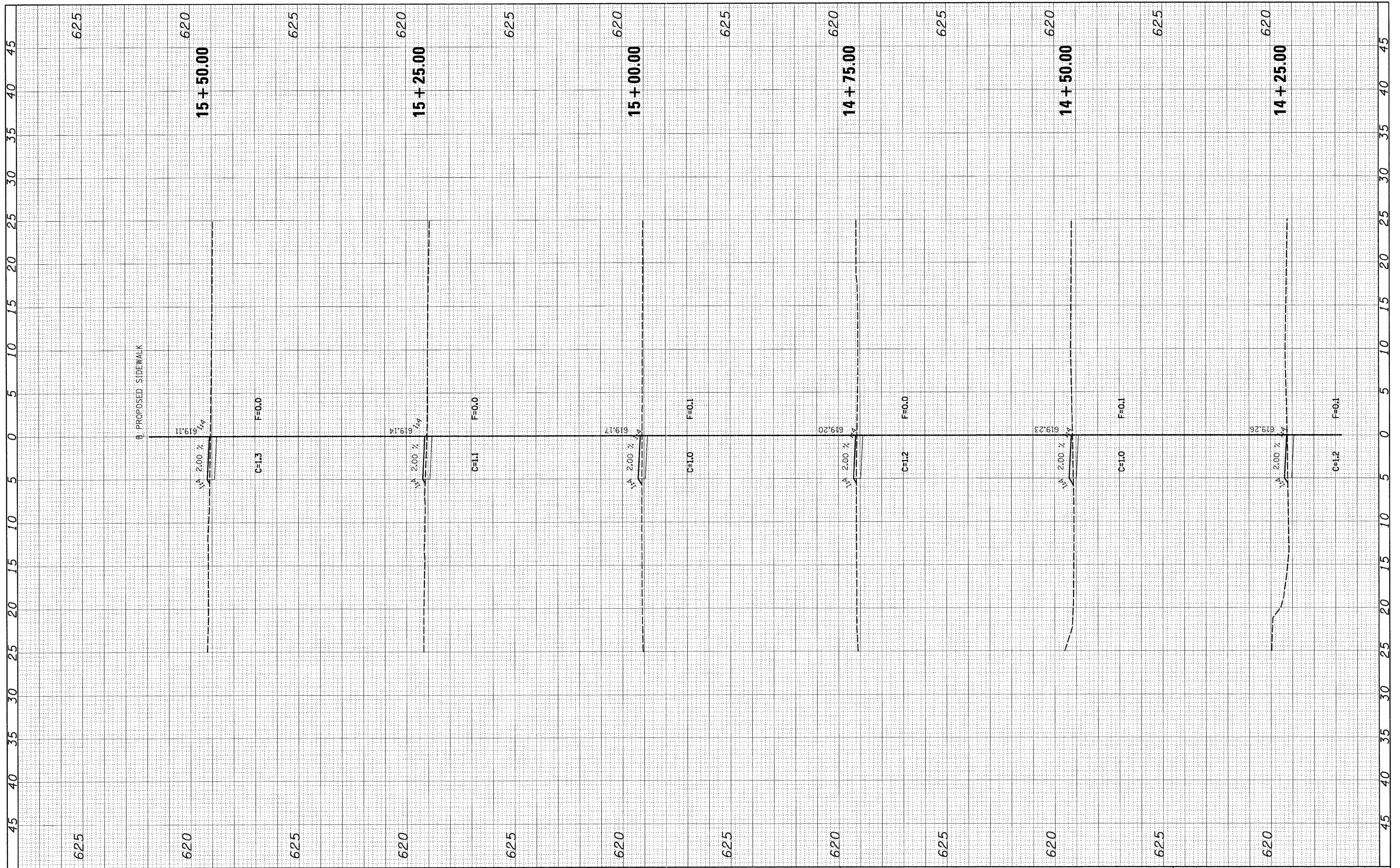
**LOVELESS PARK ITEP SIDEWALK  
 CROSS SECTIONS**

SCALE: SHEET NO. OF SHEETS STA. 12+75.00 TO STA. 14+00.00

F.A. RTE.	SECTION	COUNTY	TOTAL SHEETS	SHEET NO.
	10-00037-00-SW	MACOUPIN	18	11
CONTRACT NO. 93566				
ILLINOIS FED. AID PROJECT				

FINAL SURVEY	DATE
SURVEYED	BY
NOTE BOOK	NO.
TEMPLATE	AREAS CHECKED
AREAS	CHECKED

ORIGINAL SURVEY	DATE
SURVEYED	BY
NOTE BOOK	NO.
TEMPLATE	AREAS CHECKED
AREAS	CHECKED



FILE NAME = H:\6523 Carlinville\_ITEP\_Sidewalk\_Loveless\XS.SHEETS\6523.dgn  
 USER NAME = USERDESCR.  
 DESIGNED - ARG  
 DRAWN - ARG  
 CHECKED - SAR  
 DATE - 10-14-2011

REVISIONS  
 REVISED - ARG 11-30-2011  
 REVISED -  
 REVISED -  
 REVISED -

STATE OF ILLINOIS  
 DEPARTMENT OF TRANSPORTATION

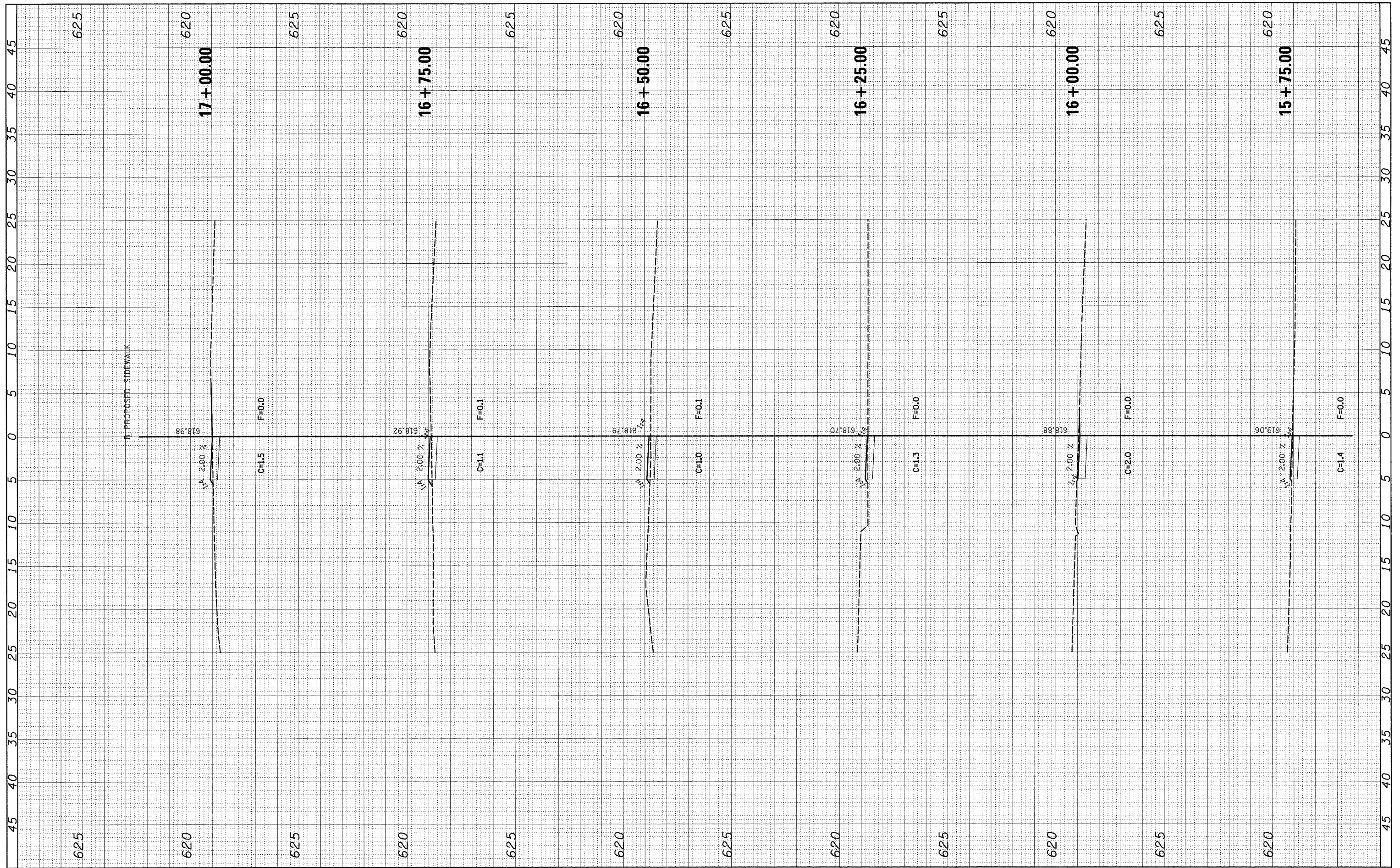
LOVELESS PARK ITEP SIDEWALK  
 CROSS SECTIONS

SCALE: SHEET NO. OF SHEETS STA. 14+25.00 TO STA. 15+50.00

F.A. RTE.	SECTION	COUNTY	TOTAL SHEETS	SHEET NO.
	10-00037-00-SW	MACOUPIN	18	12
CONTRACT NO. 93566				
ILLINOIS FED. AID PROJECT				

FINAL SURVEY	BY	DATE
SURVEYED		
NOTE BOOK		
NO.		
AREAS CHECKED		

ORIGINAL SURVEY	BY	DATE
SURVEYED		
NOTE BOOK		
NO.		
AREAS CHECKED		



FILE NAME = H:\6523 Carlinville ITEP Sidewalk Loveless\XS\_SHEETS\_6523.dgn

USER NAME = \_USERDESCR\_

PLOT SCALE = 5.00000' / IN.

PLOT DATE = 12/29/2011

DESIGNED - ARG

DRAWN - ARG

CHECKED - SAR

DATE - 10-14-2011

REVISED - ARG 11-30-2011

REVISED -

REVISED -

REVISED -

**STATE OF ILLINOIS**  
**DEPARTMENT OF TRANSPORTATION**

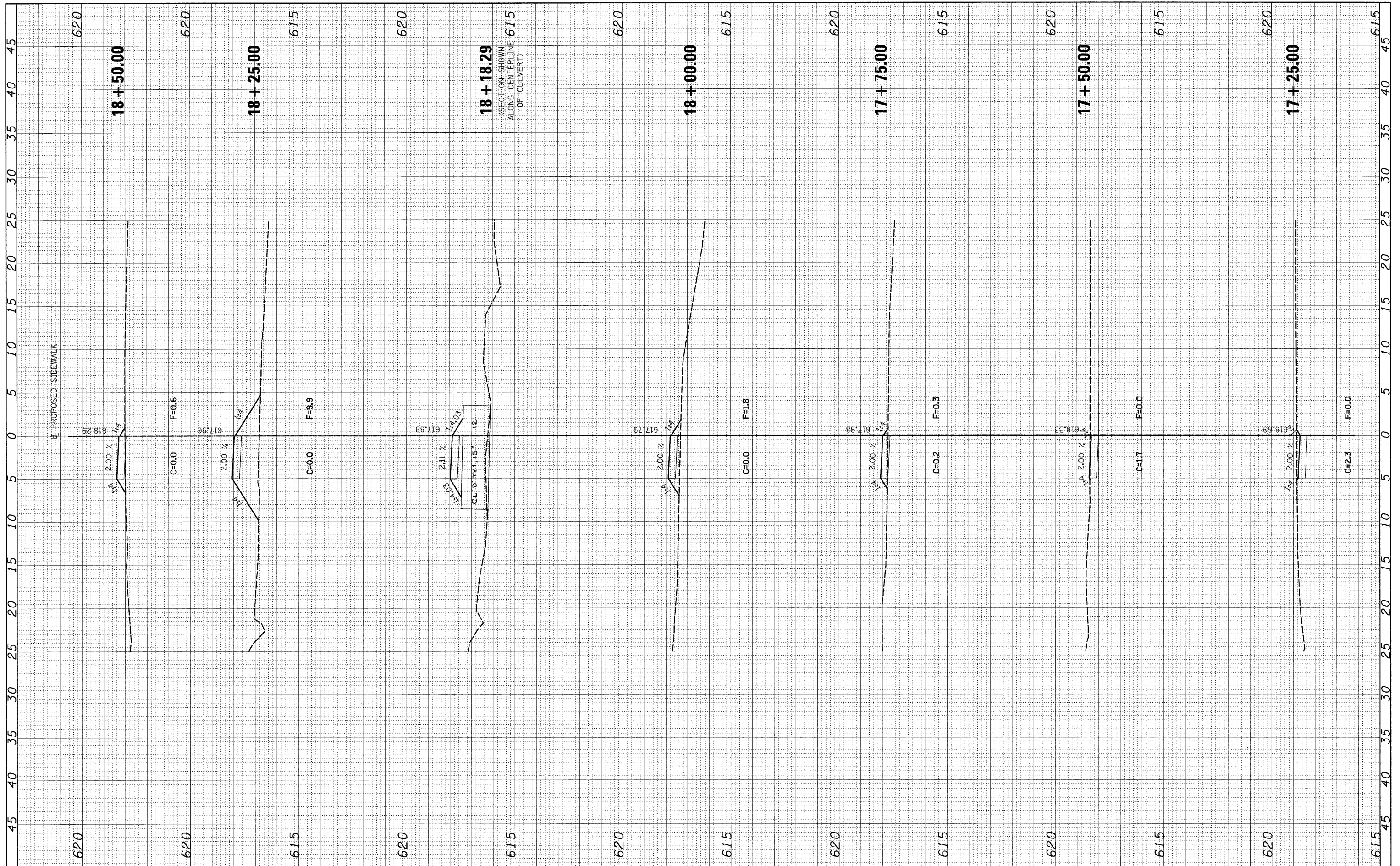
**LOVELESS PARK ITEP SIDEWALK**  
**CROSS SECTIONS**

SCALE: SHEET NO. OF SHEETS STA. 15+75.00 TO STA. 17+00.00

F.A. RTE.	SECTION	COUNTY	TOTAL SHEETS	SHEET NO.
	10-00037-00-SW	MACOUPIN	18	13
CONTRACT NO. 93566				
ILLINOIS FED. AID PROJECT				

FINAL SURVEY	DATE
SURVEYED	BY
NOTE BOOK	
TEMPLATE	
AREAS CHECKED	
NO.	

ORIGINAL SURVEY	DATE
SURVEYED	BY
NOTE BOOK	
TEMPLATE	
AREAS CHECKED	
NO.	



FILE NAME =	USER NAME = _USERDESCR_	DESIGNED - ARG	REVISED - ARG 11-30-2011
H:\6523 Carlinville ITEP Sidewalk Loveless\XS SHEETS_6523.dgn		DRAWN - ARG	REVISED -
PLOT SCALE = 5.0000' / IN.		CHECKED - SAR	REVISED -
PLOT DATE = 12/29/2011		DATE - 10-14-2011	REVISED -

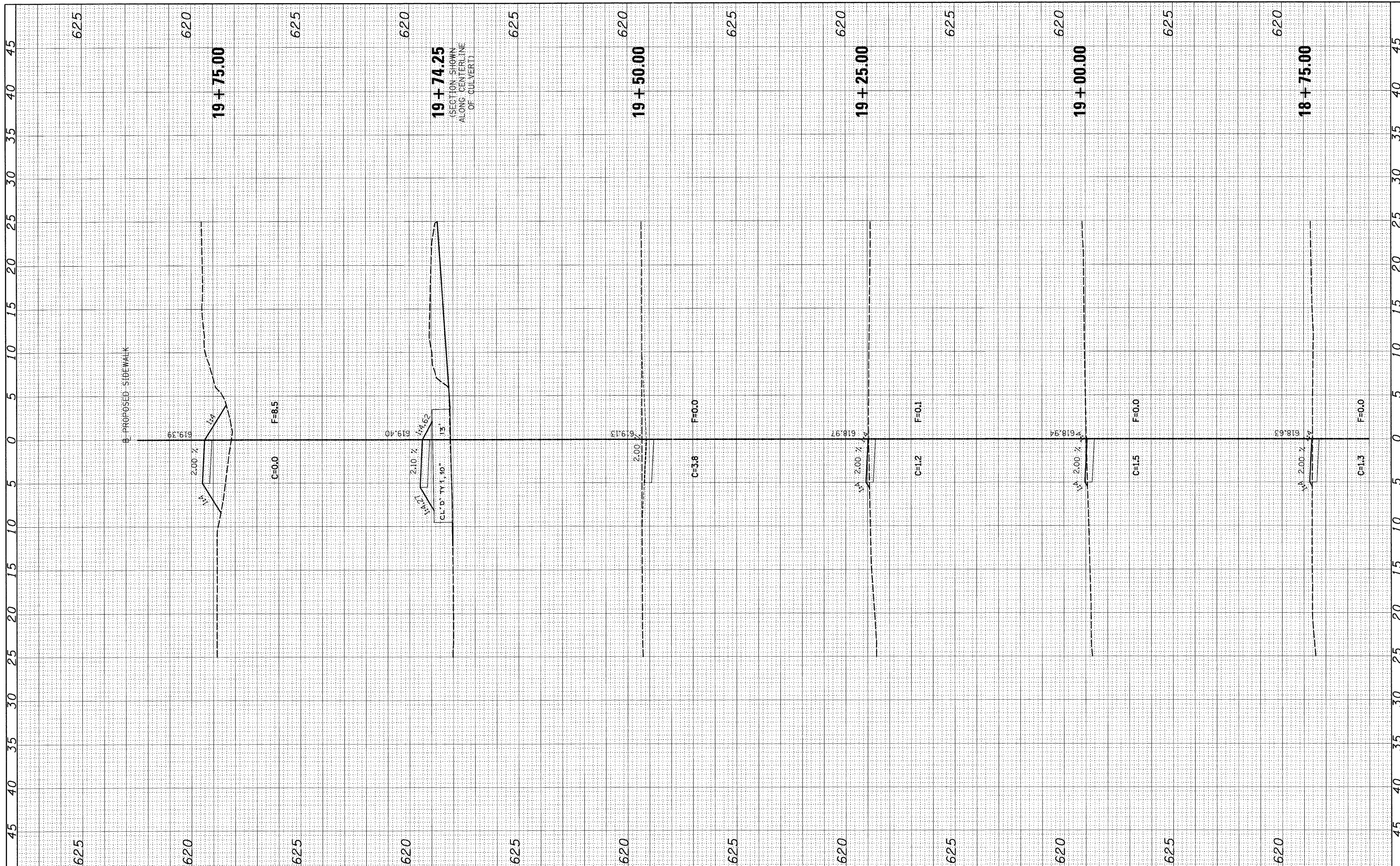
**STATE OF ILLINOIS  
DEPARTMENT OF TRANSPORTATION**

<b>LOVELESS PARK ITEP SIDEWALK CROSS SECTIONS</b>			
SCALE:	SHEET NO.	OF SHEETS	STA. 17+25.00 TO STA. 18+50.00

F.A. RTE.	SECTION	COUNTY	TOTAL SHEETS	SHEET NO.
	10-00037-00-SW	MACOUPIN	18	14
CONTRACT NO. 93566			ILLINOIS FED. AID PROJECT	

FINAL SURVEY	SURVEYED	BY	DATE
NOTE BOOK	TEMPLATE		
AREAS CHECKED			

ORIGINAL SURVEY	SURVEYED	BY	DATE
NOTE BOOK	TEMPLATE		
AREAS CHECKED			



FILE NAME = H:\6523 Carlinville ITEP Sidewalk Loveless\XS\_SHEETS\_6523.dgn  
 USER NAME = \_USERDESCR\_

DESIGNED - ARG  
 DRAWN - ARG  
 CHECKED - SAR  
 DATE - 10-14-2011

REVISED - ARG 11-30-2011  
 REVISED -  
 REVISED -  
 REVISED -

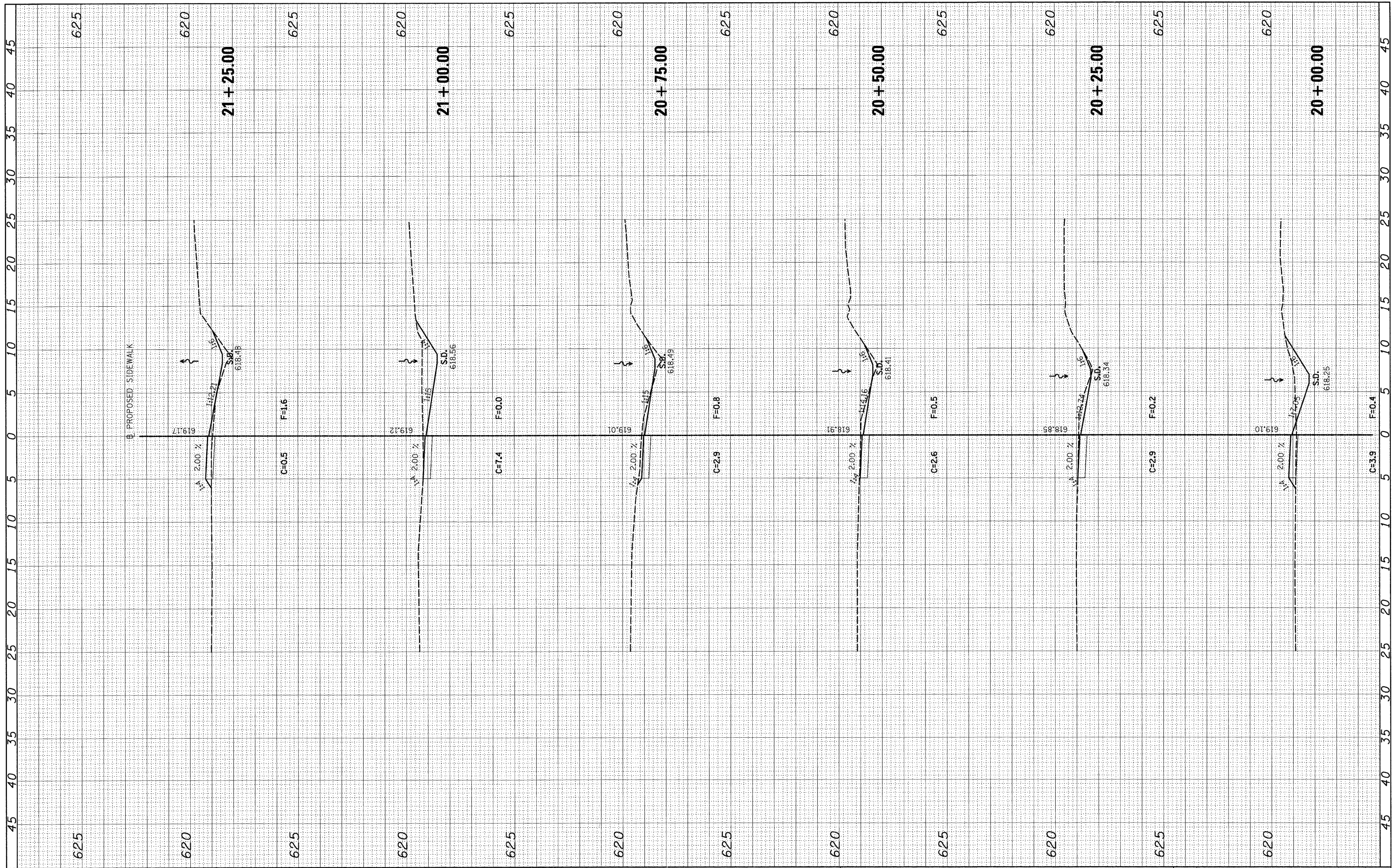
**STATE OF ILLINOIS  
 DEPARTMENT OF TRANSPORTATION**

**LOVELESS PARK ITEP SIDEWALK  
 CROSS SECTIONS**  
 SCALE: SHEET NO. OF SHEETS STA. 18+75.00 TO STA. 19+75.00

F.A. RTE.	SECTION	COUNTY	TOTAL SHEETS	SHEET NO.
	10-00037-00-SW	MACOUPIN	18	15
CONTRACT NO. 93566			ILLINOIS FED. AID PROJECT	

FINAL	SURVEYED	BY	DATE
SURVEY	TEMPLATE		
NOTE BOOK	AREAS CHECKED		
NO.			

ORIGINAL	SURVEYED	BY	DATE
SURVEY	TEMPLATE		
NOTE BOOK	AREAS CHECKED		
NO.			



FILE NAME = H:\6523 Carlinville ITEP Sidewalk Loveless\XS SHEETS-6523.dgn  
 USER NAME = \_USERDESCR.  
 PLOT SCALE = 5.00000' / IN.  
 PLOT DATE = 12/29/2011

DESIGNED - ARG  
 DRAWN - ARG  
 CHECKED - SAR  
 DATE - 10-14-2011

REVISIONS:  
 REVISED - ARG 11-30-2011  
 REVISED -  
 REVISED -  
 REVISED -

STATE OF ILLINOIS  
 DEPARTMENT OF TRANSPORTATION

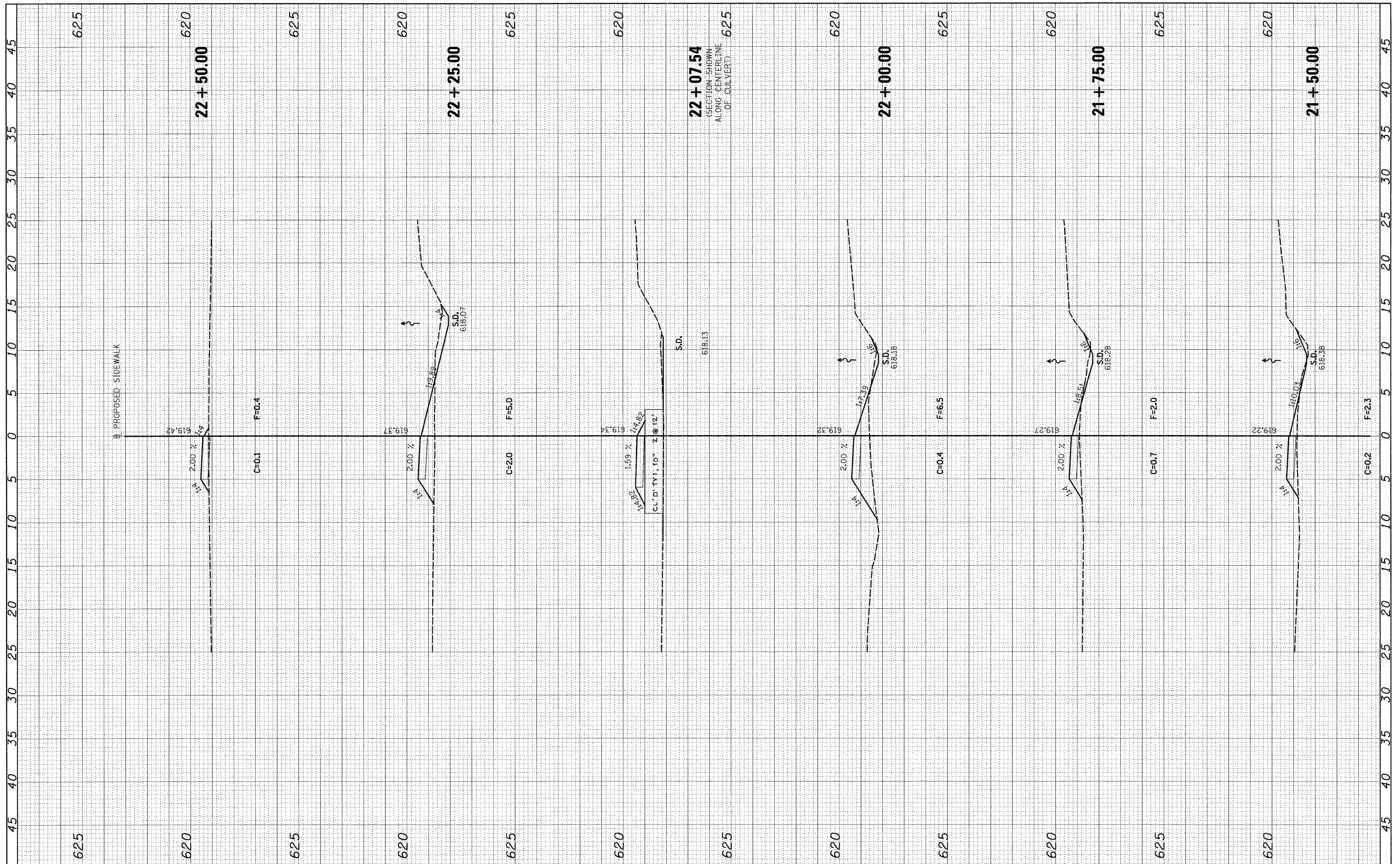
LOVELESS PARK ITEP SIDEWALK  
 CROSS SECTIONS  
 SCALE: SHEET NO. OF SHEETS STA. 20+00.00 TO STA. 21+25.00

F.A. RTE.	SECTION	COUNTY	TOTAL SHEETS	SHEET NO.
	10-00037-00-SW	MACOUPIN	18	16
CONTRACT NO. 93566				
ILLINOIS FED. AID PROJECT				



FINAL SURVEY	BY	DATE
SURVEYED		
NOTE BOOK		
AREAS CHECKED		
NO.		

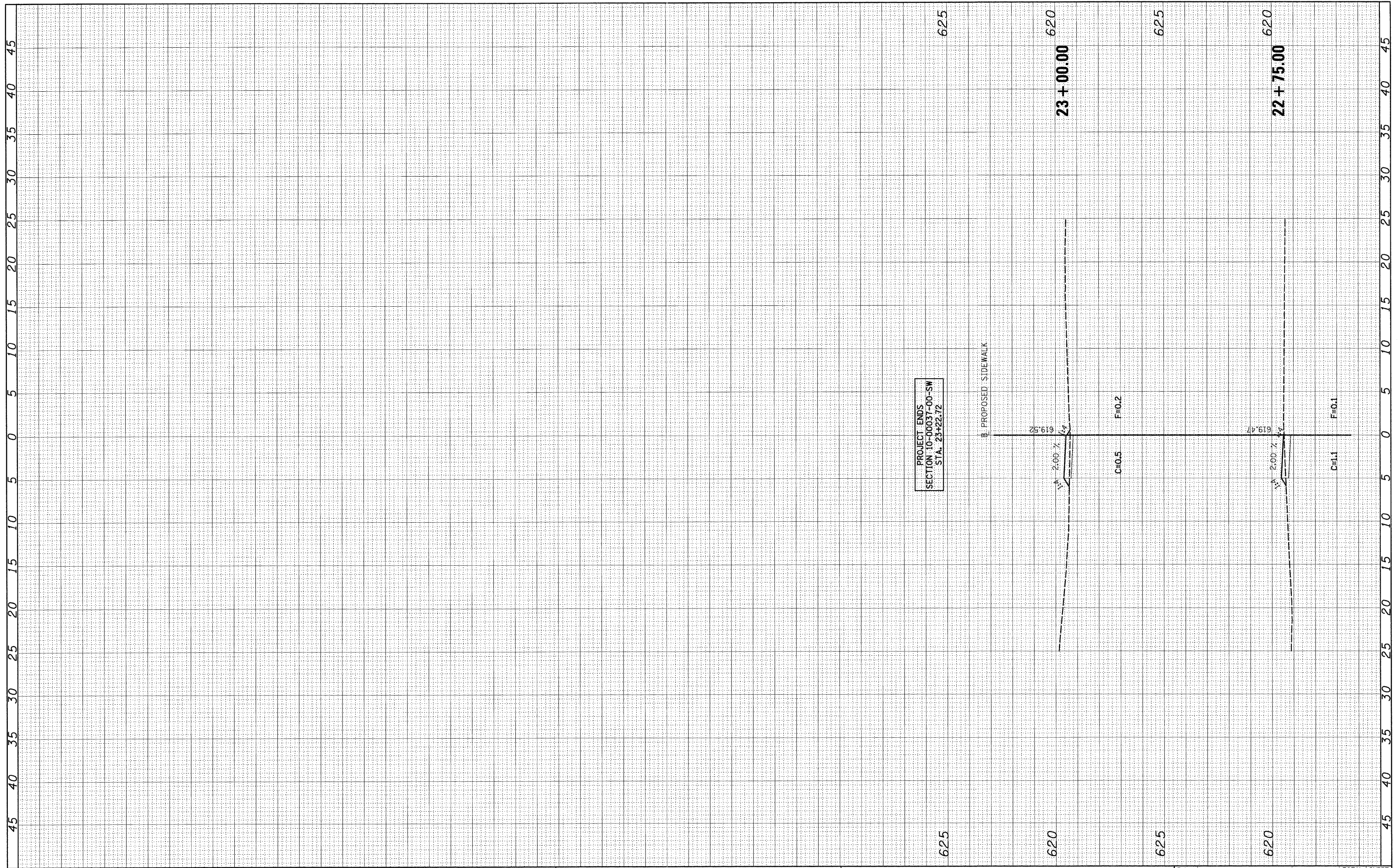
ORIGINAL SURVEY	BY	DATE
SURVEYED		
NOTE BOOK		
AREAS CHECKED		
NO.		



FILE NAME =	USER NAME = _USERDESCR.	DESIGNED - ARG	REVISED - ARG 11-30-2011	<b>STATE OF ILLINOIS DEPARTMENT OF TRANSPORTATION</b>	<b>LOVELESS PARK ITEP SIDEWALK CROSS SECTIONS</b>			F.A. RTE.	SECTION	COUNTY	TOTAL SHEETS	SHEET NO.		
H:\6523 Carlinville ITEP Sidewalk Loveless\XS.SHP	ETS_6523.dgn	DRAWN - ARG	REVISED -		SCALE:	SHEET NO.	OF	SHEETS	STA. 21+50.00	TO STA. 22+50.00	10-00037-00-SW	MACOUPIN	18	17
	PLOT SCALE = 5.0000' / IN.	CHECKED - SAR	REVISED -											
	PLOT DATE = 12/29/2011	DATE - 10-14-2011	REVISED -											
ILLINOIS FED. AID PROJECT											<b>CONTRACT NO. 93566</b>			

FINAL SURVEY	BY	DATE
SURVEYED		
PLOTTED		
NOTE BOOK		
AREAS CHECKED		
NO.		

ORIGINAL SURVEY	BY	DATE
SURVEYED		
PLOTTED		
NOTE BOOK		
AREAS CHECKED		
NO.		



FILE NAME = H:\6523 Carlinville\_ITEP\_Sidewalk\_Loveless\XS\_SHEETS\6523.dgn

USER NAME = USERDESCR  
 DESIGNED - ARG  
 DRAWN - ARG  
 CHECKED - SAR  
 DATE - 10-14-2011

REVISIONS:  
 REVISED - ARG 11-30-2011  
 REVISED -  
 REVISED -  
 REVISED -

STATE OF ILLINOIS  
 DEPARTMENT OF TRANSPORTATION

LOVELESS PARK ITEP SIDEWALK  
 CROSS SECTIONS

SCALE:	SHEET NO.	OF	SHEETS	STA. 22+75.00	TO STA. 23+00.00
--------	-----------	----	--------	---------------	------------------

F.A. RTE.	SECTION	COUNTY	TOTAL SHEETS	SHEET NO.
	10-00037-00-SW	MACOUPIN	18	18
CONTRACT NO. 93566				
ILLINOIS FED. AID PROJECT				