

ROUTE	SECTION	COUNTY	TOTAL SHEETS	SHEET NO.
T.R. 11	05-04122-00-BR	JASPER	14	1
CONTRACT NO. 95491		ILLINOIS	PROJECT BROS-079(133)	

STATE OF ILLINOIS  
DEPARTMENT OF TRANSPORTATION  
DIVISION OF HIGHWAYS  
PLANS FOR PROPOSED  
HIGHWAY BRIDGE PROGRAM

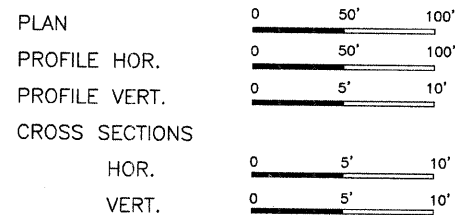
Joint Utility Locating Information for Excavators  
JULIE 1-800-892-0123

SECTION 05-04122-00-BR      JASPER COUNTY  
PROJECT BROS-079(133)  
JOB NO. C-97-022-07  
T.R. 11

INDEX OF SHEETS

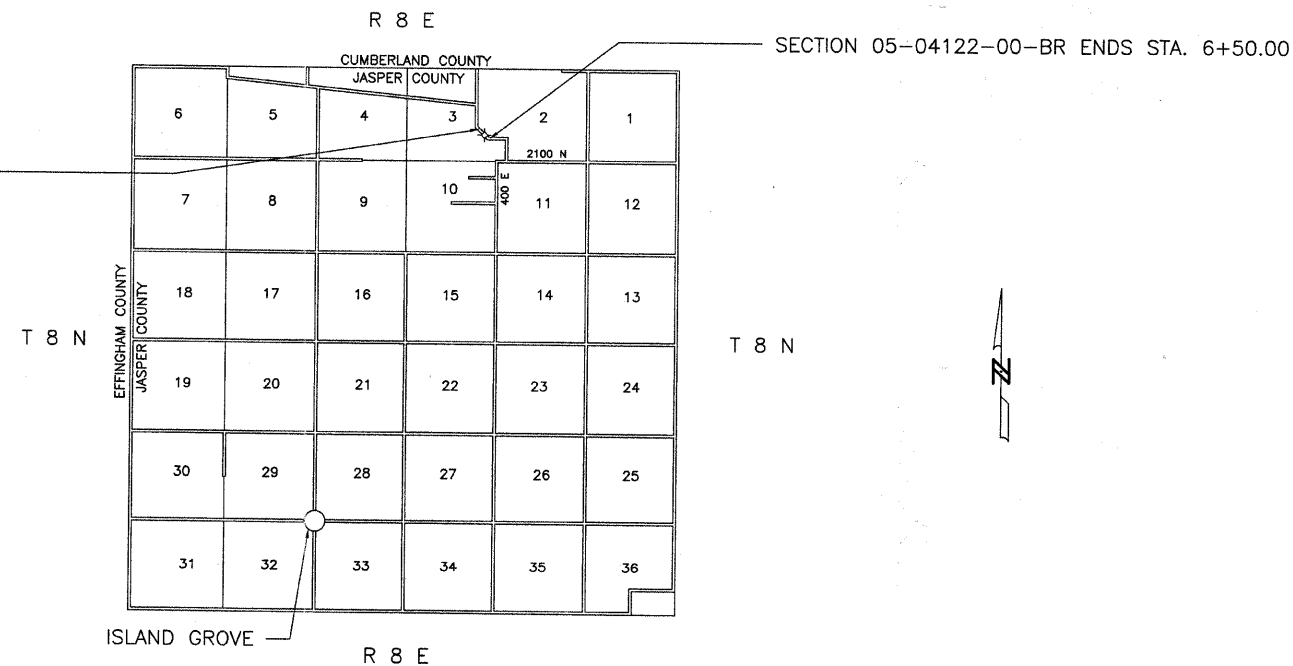
SHEET	ITEM
1	COVER SHEET
2	SUMMARY OF QUANTITIES
3	ROADWAY PLAN AND PROFILE
4	GENERAL PLAN AND ELEVATION
5	SUPERSTRUCTURE
6	SUPERSTRUCTURE DETAILS
7	STEEL RAILING, TYPE S-1
8	WEST ABUTMENT DETAILS
9	EAST ABUTMENT DETAILS
10	PILE DETAILS
11	BORING LOGS
12-14	CROSS SECTIONS

- STANDARD DRAWINGS
- STANDARD 000001-06
  - STANDARD 280001-06
  - STANDARD 630001-10
  - STANDARD 701901-02
  - STANDARD BLR 21-9
  - STANDARD BLR 22-7
  - STANDARD BLR 23-4
  - STANDARD BLR 27-1



SECTION 05-04122-00-BR BEGINS STA. 1+75.00

SINGLE SPAN PRECAST PRESTRESSED CONCRETE DECK BEAM BRIDGE  
 76'-6" BK- BK. ABUTMENTS  
 STEEL PILE / SPILLTHROUGH ABUTMENTS  
 27' DECK  
 20' SKEW RT. FORWARD  
 EXISTING STRUCTURE NO. 040-3158  
 PROPOSED STRUCTURE NO. 040-3254



*Roger A. Charleston*  
 Ill. Reg. Engr. #29195  
 1/27/12  
 Lic. Expires 11/30/13

CHARLESTON ENGINEERING INC.  
 105 N. KITCHELL  
 P.O. BOX 397  
 OLNEY, ILLINOIS 62450  
 PH. 618-392-0736



APPROVED 1-27 2012  
*Robert A. Patton*  
 COUNTY ENGINEER

---

STATE OF ILLINOIS  
 DEPARTMENT OF TRANSPORTATION

PASSED 2/17 2012  
*Maurice K. Kestel*  
 DISTRICT SEVEN ENGINEER OF  
 LOCAL ROADS AND STREETS

Releasing For  
 Bid Based on  
 Limited Review

2/17 2012  
*Roger P. Duichello*  
 DEPUTY DIRECTOR OF HIGHWAYS  
 REGION FOUR ENGINEER

FUNCTIONAL CLASSIFICATION - RURAL LOCAL ROAD      CONTRACT NO. 95491  
 ADT = 150  
 DESIGN SPEED = 30 MPH

NET LENGTH SECTION 05-04122-00-BR = 475.00 Ft. = 0.090 Mi.