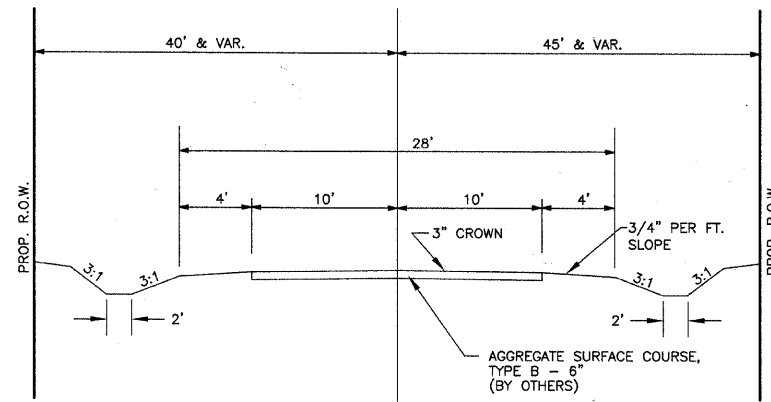


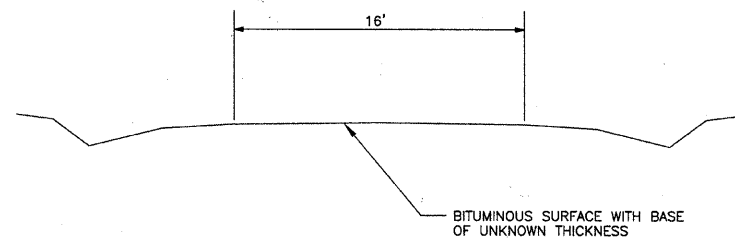
| | | | | |
|--------------------|----------------|----------|-----------------------|-----------|
| ROUTE | SECTION | COUNTY | TOTAL SHEETS | SHEET NO. |
| T.R. 11 | 05-04122-00-BR | JASPER | 14 | 2 |
| CONTRACT NO. 95491 | | ILLINOIS | PROJECT BROS-079(133) | |

DESIGN DATA

RURAL LOCAL ROAD
ADT = 125



TYPICAL SECTION - PROPOSED



TYPICAL SECTION - EXISTING

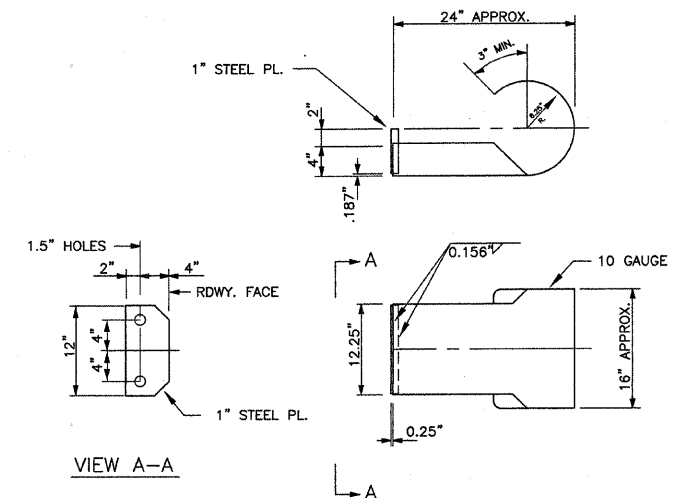
GENERAL NOTES

- SEEDING: THIS WORK SHALL BE PERFORMED IN ACCORDANCE WITH THE APPLICABLE PORTIONS OF SECTION 250 OF THE STANDARD SPECIFICATIONS AND SHALL BE PAID FOR AT THE CONTRACT UNIT PRICE FOR SEEDING CLASS 2 (SPECIAL).
 - SPRING SEEDING SHALL EXTEND FROM JANUARY 1 TO JUNE 30
FALL SEEDING SHALL EXTEND FROM JULY 1 TO DECEMBER 31
 - FERTILIZER NUTRIENTS SHALL BE APPLIED AT THE RATE OF 100 LB/ACRE
 - MULCHING SHALL BE DONE IN ACCORDANCE WITH ARTICLE 251 OF THE STANDARD SPECIFICATIONS AND SHALL BE DONE BY METHOD 2, PROCEDURE 1 AT THE RATE OF 2 TONS PER ACRE.
- NO PAYMENT FOR OVERHAUL WILL BE MADE ON THIS SECTION.

SUMMARY OF QUANTITIES

| CODE NO. | ITEM | UNIT | QUANTITY |
|------------|---|--------|----------|
| * LR631020 | TRAFFIC BARRIER TERMINAL, TYPE 1 | EACH | 2 |
| X2501000 | SEEDING, CLASS 2 (SPECIAL) | ACRE | 0.50 |
| 20100110 | TREE REMOVAL (6 TO 15 UNITS DIAMETER) | UNIT | 65 |
| 20100210 | TREE REMOVAL (OVER 15 UNITS DIAMETER) | UNIT | 164 |
| 20200100 | EARTH EXCAVATION | CU YD | 100 |
| 20300100 | CHANNEL EXCAVATION | CU YD | 270 |
| 20400800 | FURNISHED EXCAVATION | CU YD | 1015 |
| 28000305 | TEMPORARY DITCH CHECKS | FOOT | 22 |
| 28000400 | PERIMETER EROSION BARRIER | FOOT | 250 |
| 28100807 | STONE DUMPED RIPRAP, CLASS A4 | TON | 250 |
| 35101400 | AGGREGATE BASE COURSE, TYPE B | TON | 60 |
| 50100100 | REMOVAL OF EXISTING STRUCTURES | EACH | 1 |
| 50300225 | CONCRETE STRUCTURES | CU YD | 32.0 |
| 50300280 | CONCRETE ENCASEMENT | CU YD | 3.6 |
| 50400605 | PRECAST PRESTRESSED CONCRETE DECK BEAMS (33" DEPTH) | SQ FT | 2025 |
| 50800205 | REINFORCEMENT BARS, EPOXY COATED | POUND | 3120 |
| * 50900205 | STEEL RAILING, TYPE S1 | FOOT | 150 |
| 51201400 | FURNISHING STEEL PILES HP 10X42 | FOOT | 270 |
| 51202305 | DRIVING PILES | FOOT | 270 |
| 51203400 | TEST PILE STEEL HP 10X42 | EACH | 1 |
| 51204650 | PILE SHOES | EACH | 9 |
| 51500100 | NAME PLATES | EACH | 1 |
| * 63100075 | TRAFFIC BARRIER TERMINAL, TYPE 5A | EACH | 2 |
| 67100100 | MOBILIZATION | L. SUM | 1 |

* SPECIALTY ITEMS



CURLED END SECTION DETAILS

2 REQUIRED - COST INCLUDED IN
"STEEL RAILING, TYPE S-1"