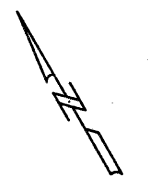
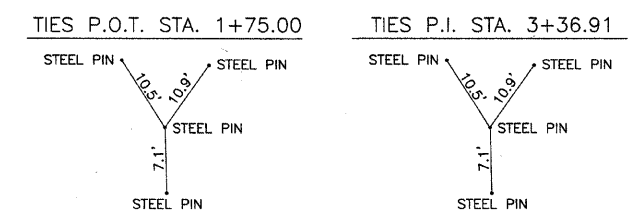


ROUTE	SECTION	COUNTY	TOTAL SHEETS	SHEET NO.
T.R. 11	05-04122-00-BR	JASPER	14	3
CONTRACT NO. 95491		ILLINOIS	PROJECT BROS-079(133)	



SCALES:
1" = 50' HOR
1" = 10' VER



STA. 4+00.00 PROPOSED STRUCTURE NO. 040-3254
SINGLE SPAN PRECAST PRESTRESSED CONCRETE DECK BEAM BRIDGE
75'-6" BK. - BK. ABUTMENTS
STEEL PILE SPILLTHROUGH ABUTMENTS
27' DECK
20' SKEW - RT. FORWARD

CIRCULAR
D = 06°32'29"
Da = 13°05'49"
Dc = 13°07'32"
T = 25.00
R = 437.48
L = 49.95
C = 49.92
E = 0.71
M = 0.71
PI Sta = 3+36.91
S.E. = .04 FT/FT
ATTAIN S.E. 2+00 TO 3+12
REMOVE S.E. 3+12 TO 3+62

E J WATER CORPORATION
DIETERICH, IL 62424
PH. 217-925-5566

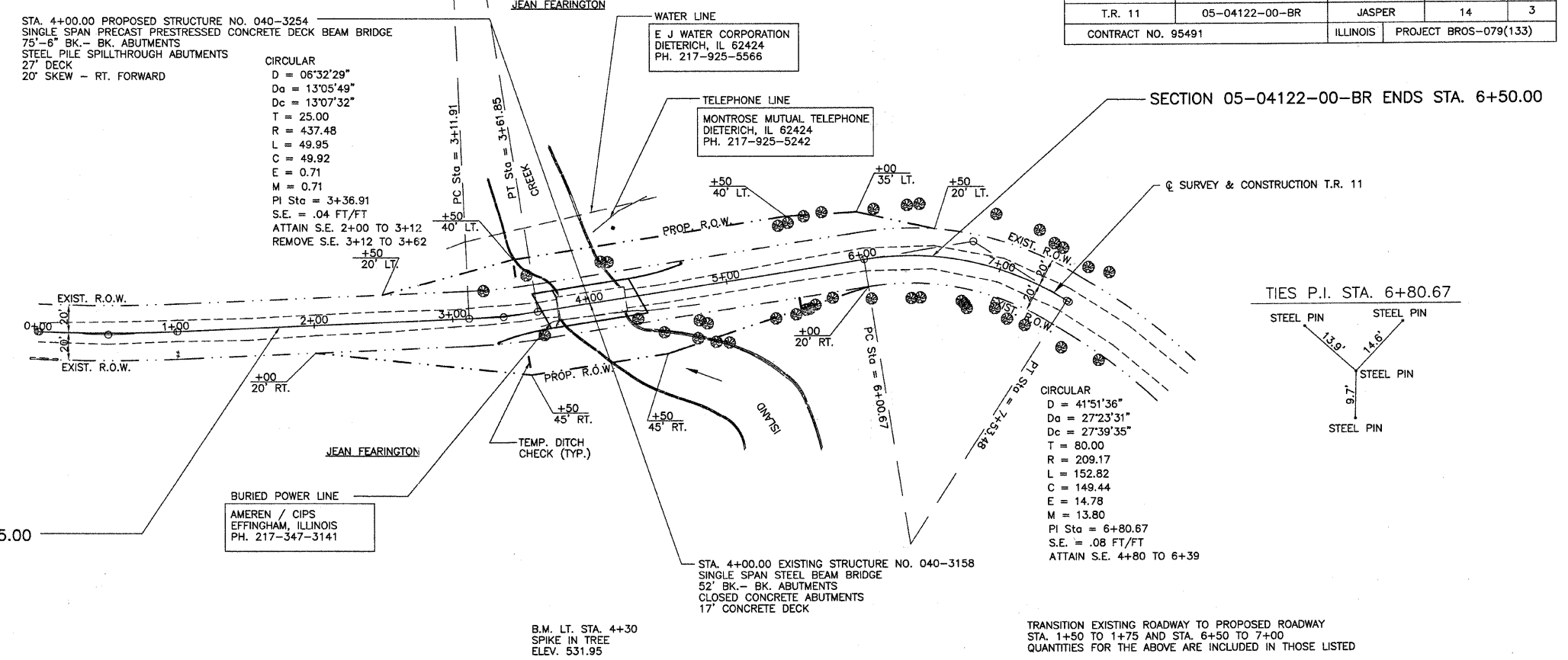
MONTROSE MUTUAL TELEPHONE
DIETERICH, IL 62424
PH. 217-925-5242

AMEREN / CIPS
EFFINGHAM, ILLINOIS
PH. 217-347-3141

STA. 4+00.00 EXISTING STRUCTURE NO. 040-3158
SINGLE SPAN STEEL BEAM BRIDGE
52' BK. - BK. ABUTMENTS
CLOSED CONCRETE ABUTMENTS
17" CONCRETE DECK

SECTION 05-04122-00-BR ENDS STA. 6+50.00

SECTION 05-04122-00-BR BEGINS STA. 1+75.00



TRANSITION EXISTING ROADWAY TO PROPOSED ROADWAY
STA. 1+50 TO 1+75 AND STA. 6+50 TO 7+00
QUANTITIES FOR THE ABOVE ARE INCLUDED IN THOSE LISTED

B.M. LT. STA. 4+30
SPIKE IN TREE
ELEV. 531.95

STATION	DESCRIPTION	UNIT	QUANTITY
570	EARTHWORK	CU. YD.	570
560	CHANNEL EXCAVATION		270*
560	EARTH EXCAVATION		100
560	EMBANKMENT		1190
560	FURNISHED EXCAVATION		1015
550	* IT IS ESTIMATED THAT 50% OF THE CHANNEL EXCAVATION WILL BE SUITABLE FOR USE IN THE EMBANKMENT. UNSUITABLE MATERIAL SHALL BE DISPOSED OF BY THE CONTRACTOR.		
540	TEMPORARY DITCH CHECKS	FOOT	22
530	TREE REMOVAL (6 TO 15 UNIT DIA.)	UNIT	65
520	TREE REMOVAL (OVER 15 UNIT DIA.)	UNIT	164
510	SEEDING CLASS 2 (SPECIAL)	ACRE	0.50
500	TRAFFIC BARRIER TERMINAL, TYPE 5A	EACH	2
500	TRAFFIC BARRIER TERMINAL, TYPE 1	EACH	2

