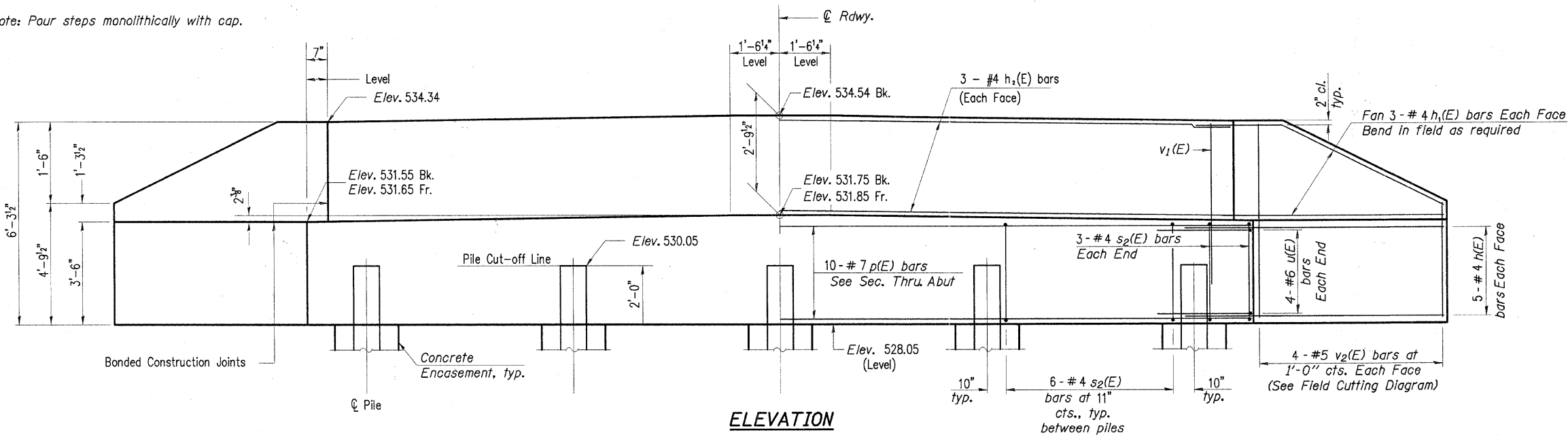
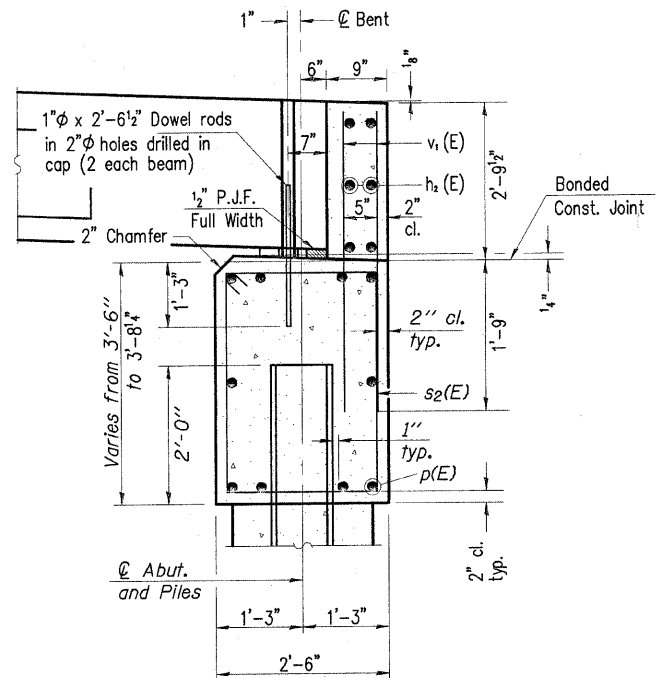


Note: Pour steps monolithically with cap.



**ELEVATION**



**SEC. THRU ABUT.**

**BILL OF MATERIAL**

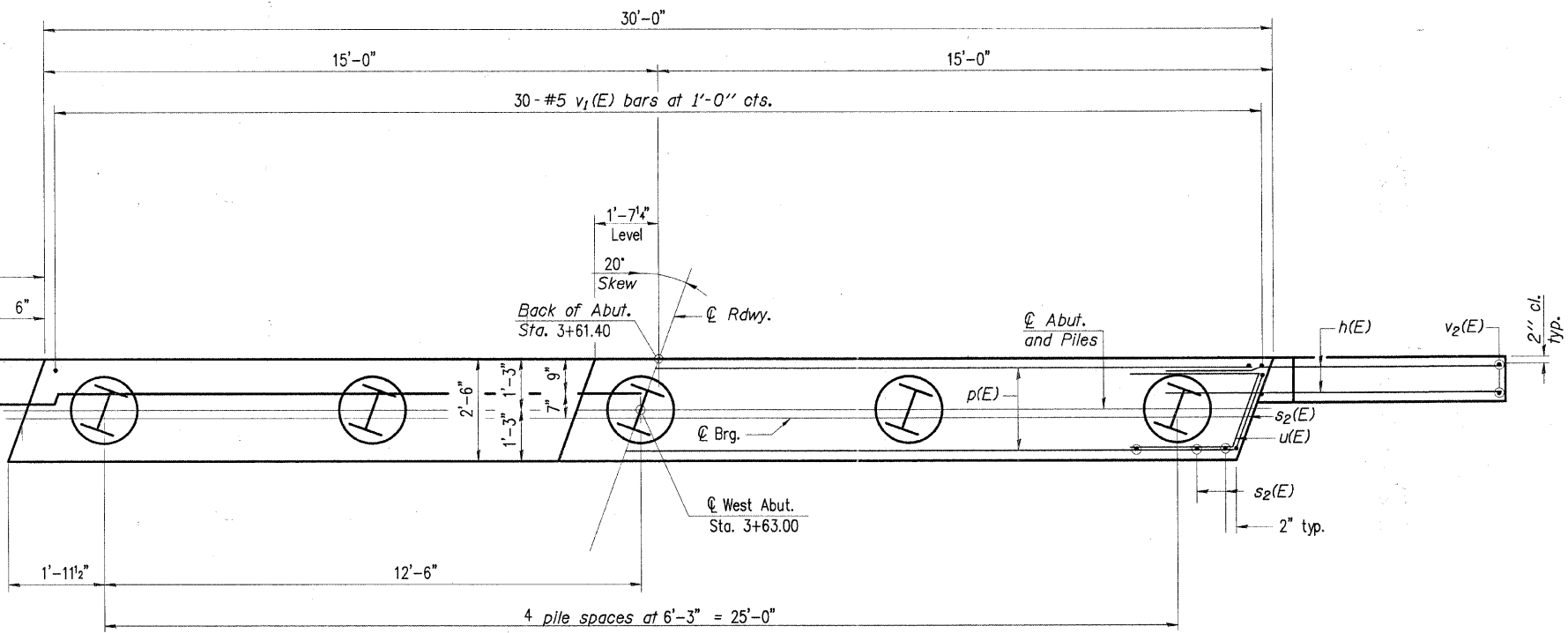
Bar	No.	Size	Length	Shape
h(E)	20	#4	5'-0"	—
h1(E)	12	#4	5'-3"	—
h2(E)	6	#4	29'-8"	—
p(E)	10	#7	29'-8"	—
s2(E)	30	#4	11'-5"	□
u(E)	8	#6	11'-3"	—
v1(E)	60	#5	4'-5"	—
v2(E)	8	#5	10'-2"	—
Concrete Structures			Cu. Yd.	16.0
Reinforcement Bars, Epoxy Coated			Pound	1560
Furnishing Steel Piles HP 10X42			Foot	150
Driving Piles			Foot	150
Pile Shoes			Each	5
Concrete Encasement			Cu. Yd.	1.8

For details of piles and Concrete Encasement, see sheet 10 of 14.

- Notes:
- The Backwall and the portion of the Wingwalls above the bonded construction joint shall be cast against the in-place beam.
  - Space reinforcement in cap to miss anchor bolts.
  - The test pile shall be driven to 110 percent of the Nominal Required Bearing indicated in the pile data information.

**CHARLESTON ENGINEERING, INC.**  
 CONSULTING ENGINEERS  
 105 NORTH KITCHELL  
 P.O. BOX 397  
 OLNEY, ILLINOIS 62450  
 (618) 352-0735  
 ILLINOIS DEPARTMENT OF PROFESSIONAL REGULATION REGISTRATION #184-003513

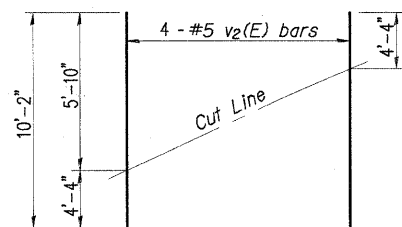
**WEST ABUTMENT DETAILS**  
**STRUCTURE NO. 040-3254**  
**T.R. 11**  
**OVER ISLAND CREEK**  
**SECTION 05-04122-00-BR**  
**JASPER COUNTY**  
**STATION 4+00.00**



**PLAN**

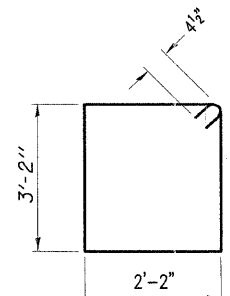
**PILE DATA**

Type: HP 10X42  
 Nominal Required Bearing: 325 kips  
 Factored Resistance Available: 170 kips  
 Est. Length: 30 Feet  
 No. Production Piles: 5

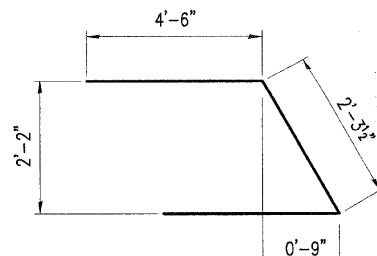


**FIELD CUTTING DIAGRAM**

Order v2(E) full length. Cut as shown and use remainder of bars in opposite face.



**BAR s2(E)**



**BAR u(E)**