

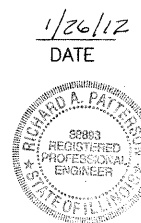
04-27-12 LETTING ITEM 062

STATE OF ILLINOIS
 DEPARTMENT OF TRANSPORTATION
 DIVISION OF HIGHWAYS
 PLANS FOR PROPOSED
 FEDERAL AID SECONDARY PROJECT
 SURFACE TRANSPORTATION RURAL
 JASPER COUNTY
 SECTION 10-00117-00-FP
 F.A.S. 1705 - COUNTY HIGHWAY 3
 JOB NO. C-97-068-12
 PROJECT NO. RS-1705(103)

ROUTE	SECTION	COUNTY	TOTAL SHEETS	SHEET NO.
F.A.S. 1705	10-00117-00-FP	JASPER	2	1
CONTRACT NO. 95675		ILLINOIS	PROJECT RS-1705(103)	

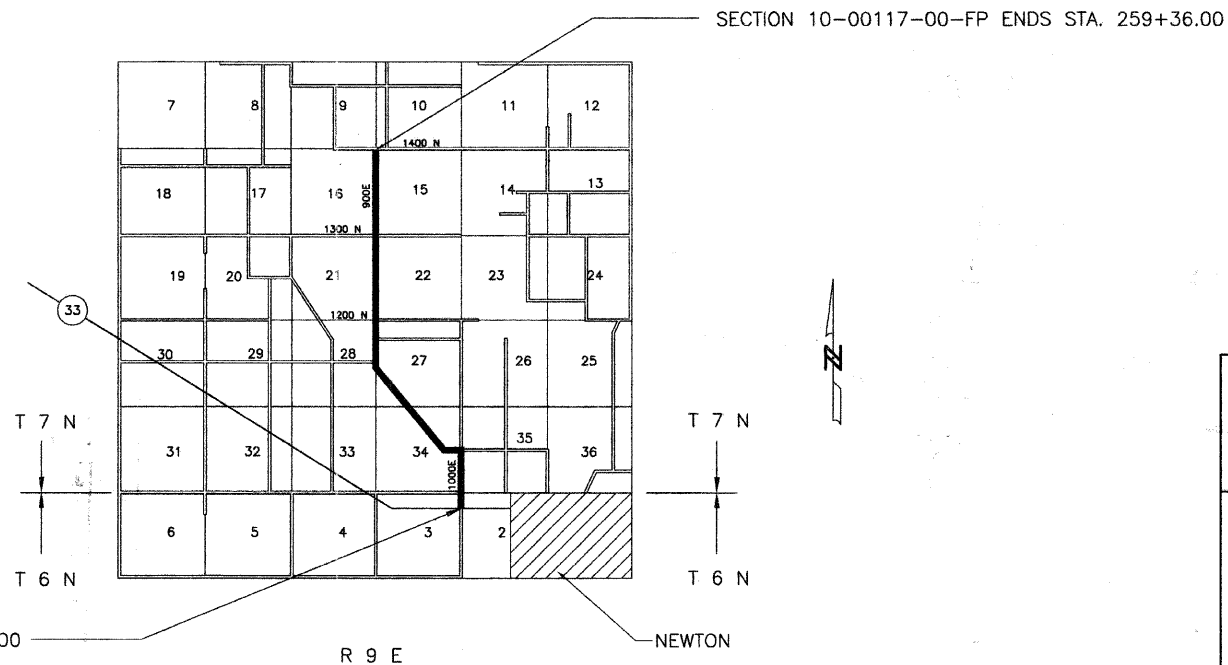
THESE PLANS WERE PREPARED BY ME, OR A FULL TIME MEMBER OF MY STAFF, WORKING UNDER MY PERSONAL SUPERVISION.

Richard A. Patterson
 ILLINOIS REG. PROF. ENG. 38893
 LICENSE EXPIRES 11/30/13
 12871 EAST STATE HWY 33
 NEWTON, ILLINOIS 62448
 PHONE 618-783-2915



INDEX OF SHEETS

SHEET	ITEM
1	COVER SHEET
2	SUMMARY OF QUANTITIES STANDARD 000001-06 STANDARD 701901-02 BLR-22-7



SECTION 10-00117-00-FP BEGINS STA. 0+00.00

SECTION 10-00117-00-FP ENDS STA. 259+36.00

RURAL MAJOR COLLECTOR
 ADT =
 DESIGN SPEED = 50 MPH

CONTRACT NO. 95675

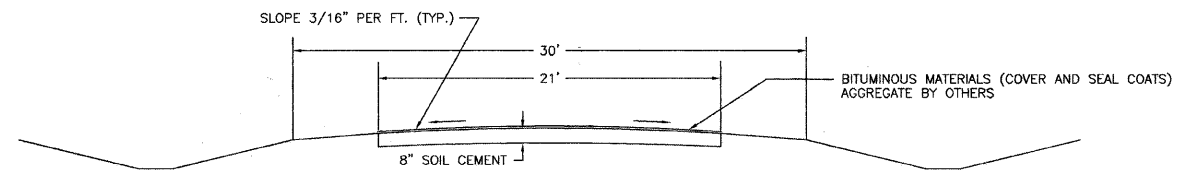
Joint Utility Locating Information for Excavators
 JULIE 1-800-892-0123

NET LENGTH SECTION 10-00117-00-FP = 25,936.00 Ft. = 4.912 Mi.

APPROVED	<u>1-26</u>	20 <u>12</u>
	<i>Richard A. Patterson</i> COUNTY ENGINEER	
STATE OF ILLINOIS DEPARTMENT OF TRANSPORTATION		
PASSED	<u>2/17 2012</u>	
	<i>Maurice East</i> DISTRICT SEVEN ENGINEER OF LOCAL ROADS AND STREETS	
Releasing For Bid Based on Limited Review	<u>2/17 2012</u>	
	<i>Ryan F. Anselmi</i> DEPUTY DIRECTOR OF HIGHWAYS REGION FOUR ENGINEER	

ROUTE	SECTION	COUNTY	TOTAL SHEETS	SHEET NO.
F.A.S. 1705	10-00117-00-FP	JASPER	2	2
CONTRACT NO. 95675		ILLINOIS	PROJECT RS-1705(103)	

TYPICAL SECTION OF PROPOSED IMPROVEMENT



STA. 0+00.0 TO STA. 259 + 36.00

PAVEMENT DESIGN DATA

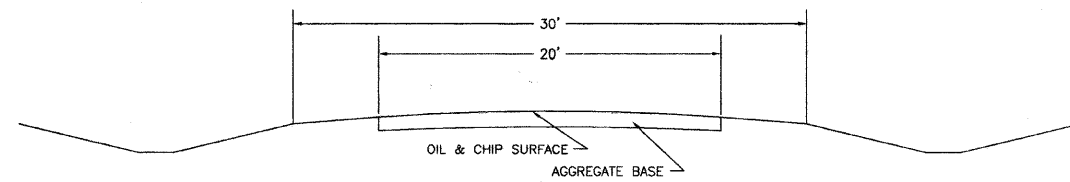
CLASS IV ROAD
STRUCTURAL DESIGN TRAFFIC (S.D.T.) 2032 PC = 735
SU = 50
MU = 15

MINIMUM SOIL SUPPORT: LB.U. = 3
PERCENT OF S.D.T. IN TRAFFIC LANE P = 50%
S = 50%
M = 50%

TRAFFIC FACTOR = 0.018
STRUCTURAL NUMBER = 2.40

PAVEMENT STRUCTURE MATERIALS:
STAGE 1 - 8" SOIL-CEMENT BASE COURSE (500 PSI MIN.)
A-2 SEAL COAT (AGGREGATE BY OTHERS)
STAGE 2 - 2" H.M.A. 21' WIDE (FUTURE)

TYPICAL SECTION OF EXISTING ROAD



STA. 0+00.0 TO STA. 259 + 36.00

SECTION 10-00117-00-FP
SUMMARY OF QUANTITIES

QUANTITY	UNIT	ITEM	CODE NUMBER
60,518	SQ. YD.	PROCESSING SOIL-CEMENT BASE COURSE 8"	35200300
37,643	100 WT.	CEMENT	35200500
36,311	GALLON	BITUMINOUS MATERIALS (COVER AND SEAL COATS)	40300300
1	LUMP SUM	MOBILIZATION	67100100