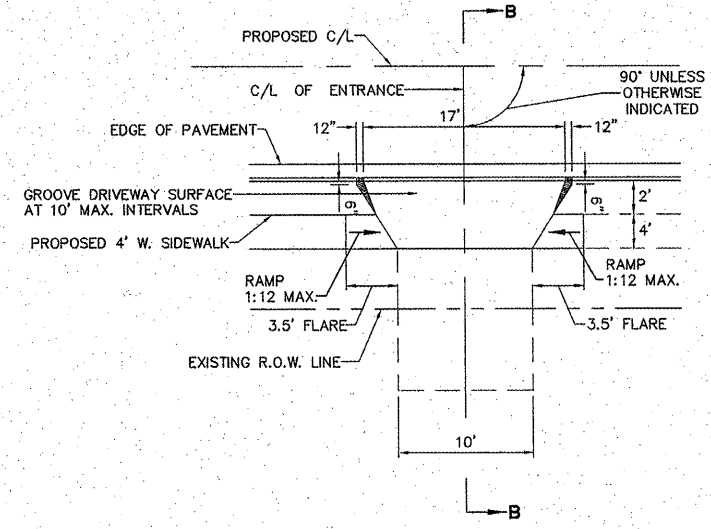
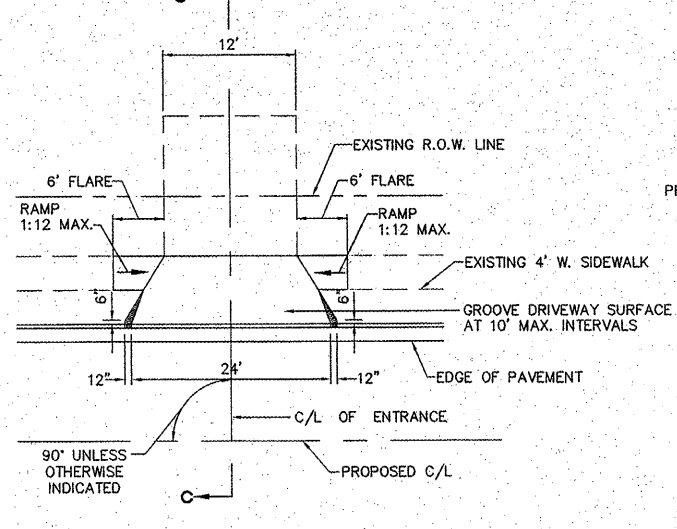


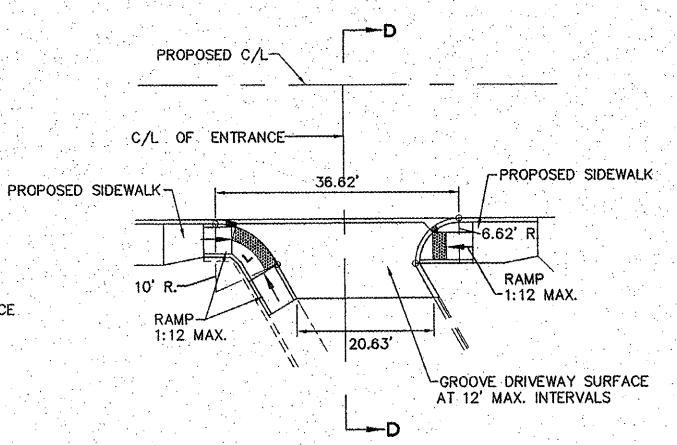
**DETAIL F**  
ENTRANCE AT STA. 14+14.26 RT.



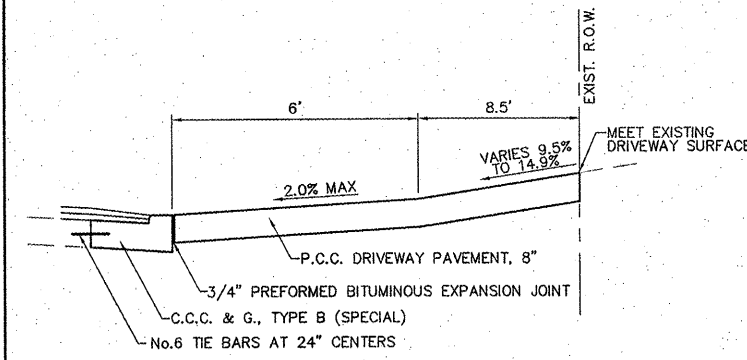
**DETAIL G**  
ENTRANCE AT STA. 14+94.60 RT.



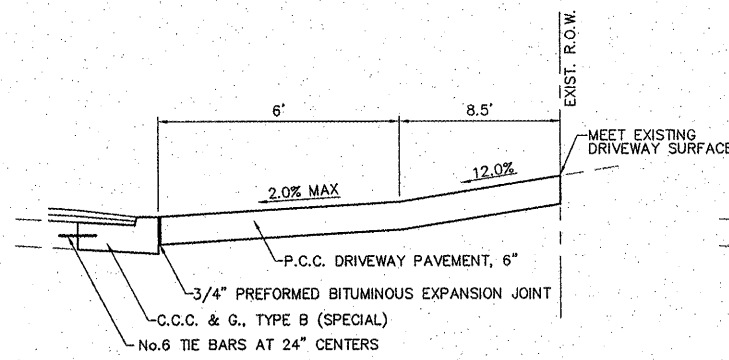
**DETAIL H**  
ENTRANCE AT STA. 15+41.14 LT.



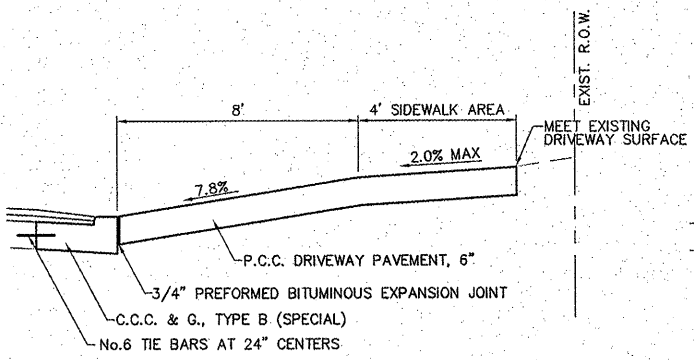
**DETAIL I**  
ENTRANCE AT STA. 23+85.78 RT.



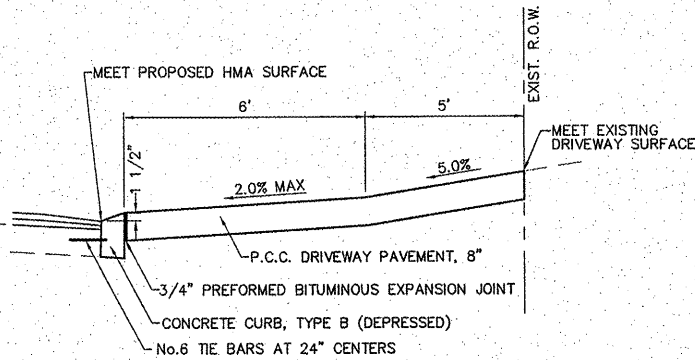
**SECTION A-A**



**SECTION B-B**



**SECTION C-C**



**SECTION D-D**

NO.	DESCRIPTION

**SMS ENGINEERS**  
Sheppard, Morgan & Schwaab, Inc.  
CONSULTING ENGINEERS AND LAND SURVEYORS  
215 Market Street, P.O. Box E, Alton, IL 62002 618/462-9755 E-mail: mail@smsengineers.com  
10 Central Industrial Drive, Granite City, IL 62040 618/877-5700 E-mail: mail@smsengineers.com  
DESIGN FIRM # 184-000932

VILLAGE OF EAST ALTON, ILLINOIS  
SECTION 08-00045-00-PV  
MAIN ST. - PHASE 2  
ENTRANCE DETAILS

DWG. NO.	E8 MAIN ST. PH2 CONST DETAILS.DWG
REF. BK.	PG.
JOB NO.	227832.1
DSN. BY:	DEG
DWN. BY:	CAD
CHK. BY:	DEG
DATE:	DEC, 2011