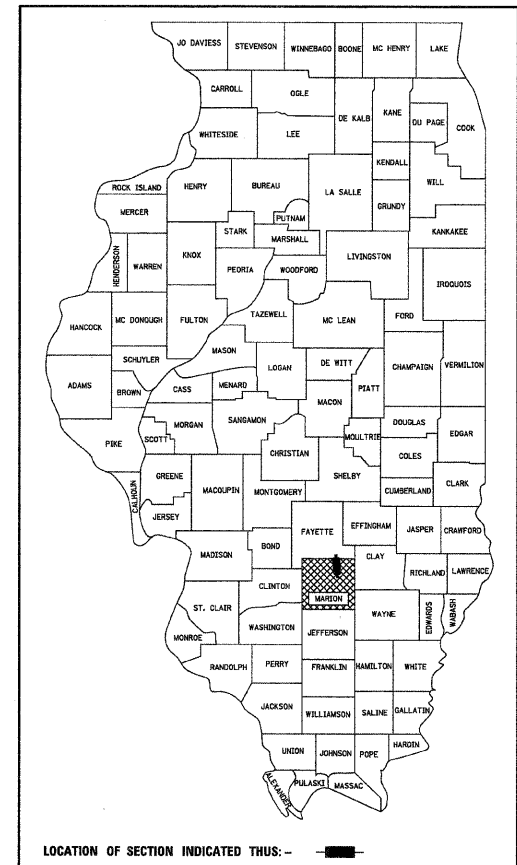


STATE OF ILLINOIS  
DEPARTMENT OF TRANSPORTATION

**PLANS FOR PROPOSED  
HIGHWAY BRIDGE PROGRAM**

**TR 304A (FORD ROAD)  
NORTH FORK  
SECTION 09-07116-00-BR  
PROJECT NO. BROS-0121(058)  
KINMUNDY ROAD DISTRICT  
MARION COUNTY  
JOB NO. C-98-334-11**



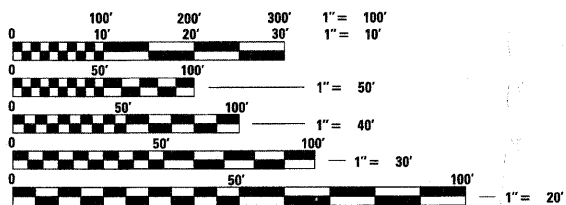
- INDEX OF SHEETS**
1. COVER SHEET
  2. SUMMARY OF QUANTITIES, GENERAL NOTES, AND TYPICAL SECTIONS
  3. PLAN AND PROFILE OF ROADWAY
  4. GENERAL PLAN AND ELEVATION
  - 5.-6. PRECAST PRESTRESSED CONCRETE DECK BEAM DETAILS
  7. STEEL RAILING, TYPE S1 DETAILS
  8. ABUTMENT DETAILS
  9. HP PILE DETAILS
  - 10.-11. CROSS SECTIONS OF ROADWAY

- HIGHWAY STANDARDS (SEE SPECIFICATIONS)
- 000001-06 STANDARD SYMBOLS, ABBREVIATIONS AND PATTERNS
  - 280001-06 TEMPORARY EROSION CONTROL SYSTEMS
  - 515001-03 NAME PLATE FOR BRIDGES
  - 635006-03 REFLECTOR AND TERMINAL MARKER PLACEMENT
  - 701901-02 TRAFFIC CONTROL DEVICES
  - B.L.R. 21-9 TYPICAL APPLICATION OF TRAFFIC CONTROL DEVICES FOR CONSTRUCTION ON RURAL LOCAL HIGHWAYS
  - B.L.R. 27-1 TRAFFIC BARRIER TERMINAL TYPE 5A

SOIL BORINGS (SEE SPECIFICATIONS)

DESIGN CLASSIFICATION: RURAL LOCAL ROAD

ADT<sub>2010</sub> : 100  
ADT<sub>2030</sub> : 125  
DESIGN SPEED - 30 MPH



FULL SIZE PLANS HAVE BEEN PREPARED USING STANDARD ENGINEERING SCALES, REDUCED SIZED PLANS WILL NOT CONFORM TO STANDARD SCALES, IN MAKING MEASUREMENTS ON REDUCED PLANS, THE ABOVE SCALES MAY BE USED.

J.U.L.I.E.  
JOINT UTILITY LOCATING INFORMATION FOR EXCAVATORS  
1-800-892-0123 Website: <http://www.illinois1call.com>

CONTRACT NO. 97491

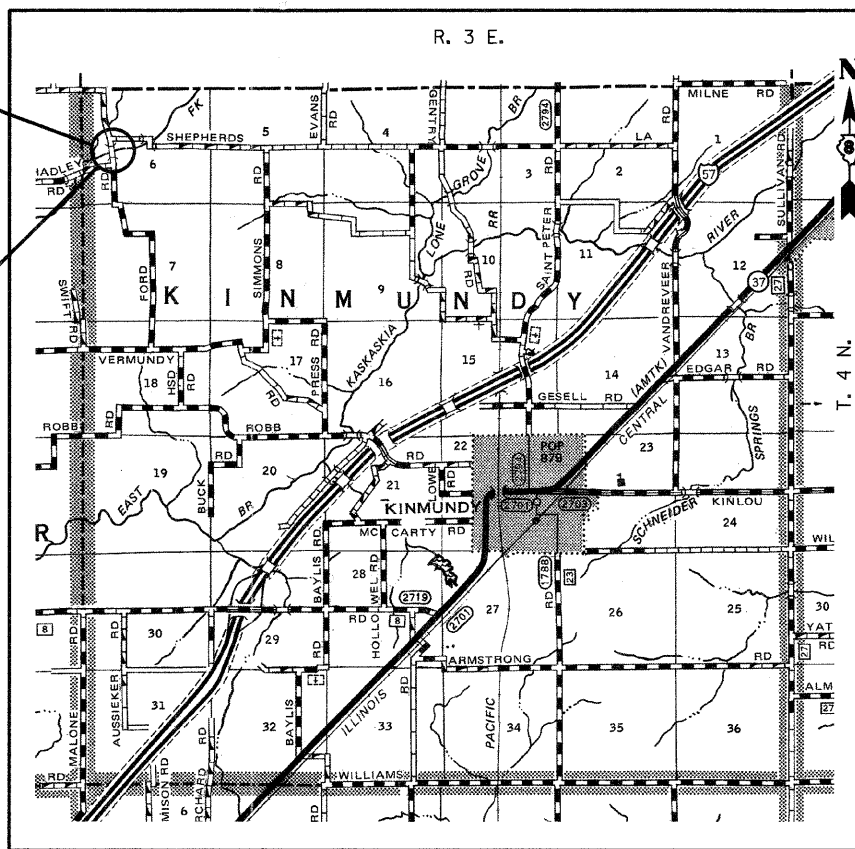


*Gary L. Hahn* 02.10.2012  
GARY L. HAHN  
CENTRALIA, ILLINOIS  
ILLINOIS LICENSED PROFESSIONAL  
ENGINEER NO. 62-42606  
EXPIRES NOV. 30, 2013

SECTION 09-07116-00-BR INCLUDES THE CONSTRUCTION OF A SINGLE SPAN PRECAST PRESTRESSED CONCRETE DECK BEAM BRIDGE CARRYING TR 304A (FORD ROAD) OVER NORTH FORK, 61'-10" BACK TO BACK ABUTMENTS X 24' WIDE, 0° SKEW. EXISTING STRUCTURE NO. 061-3138 PROPOSED STRUCTURE NO. 061-3314

SECTION BEGINS  
STA. 7+14.78

SECTION ENDS  
STA. 13+62.30



LOCATION: NEAR THE NW CORNER, NE 1/4, SW 1/4, SECTION 6, T4N, R3E, 3RD P.M.  
NET LENGTH OF PROJECT: 647.52 FT. = 0.123 MI.

STATE OF ILLINOIS  
DEPARTMENT OF TRANSPORTATION

APPROVED *Feb 13*, 2012  
*Rosa*  
KINMUNDY ROAD DISTRICT COMMISSIONER

APPROVED *FEB 13*, 2012  
*William*  
MARION COUNTY, COUNTY ENGINEER

PASSED *March 12*, 2012  
*Debra*  
DISTRICT EIGHT ENGINEER OF LOCAL ROADS & STREETS

RELEASING FOR BID  
BASED ON LIMITED  
REVIEW *March 12*, 2012  
*Orna*  
DEPUTY DIRECTOR OF HIGHWAYS, REGION FIVE ENGINEER

**PRINTED BY THE AUTHORITY  
OF THE STATE OF ILLINOIS**

ROUTE	SECTION	COUNTY	TOTAL SHEETS	SHEET NO.
TR 304A	09-07116-00-BR	MARION	11	1
CONTRACT NO. 97491				
ILLINOIS FED. AID PROJECT				

02/10/2012 RAAI #51509