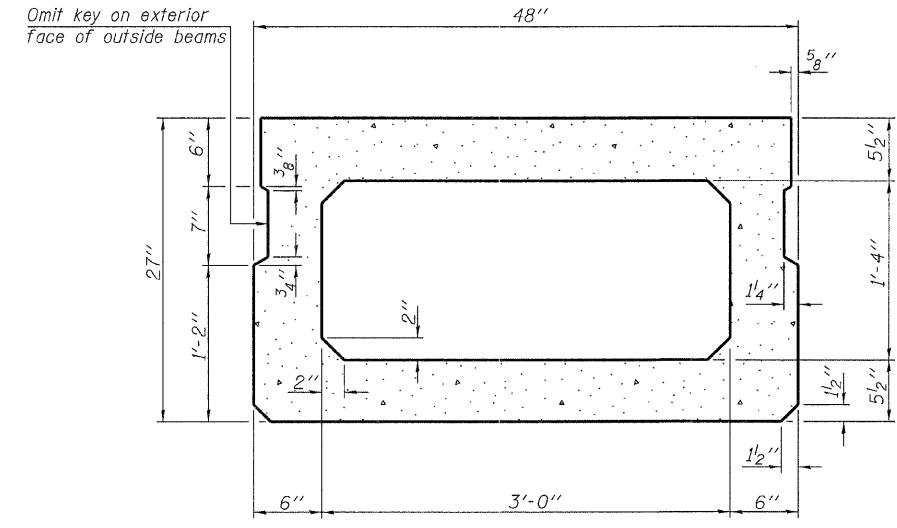
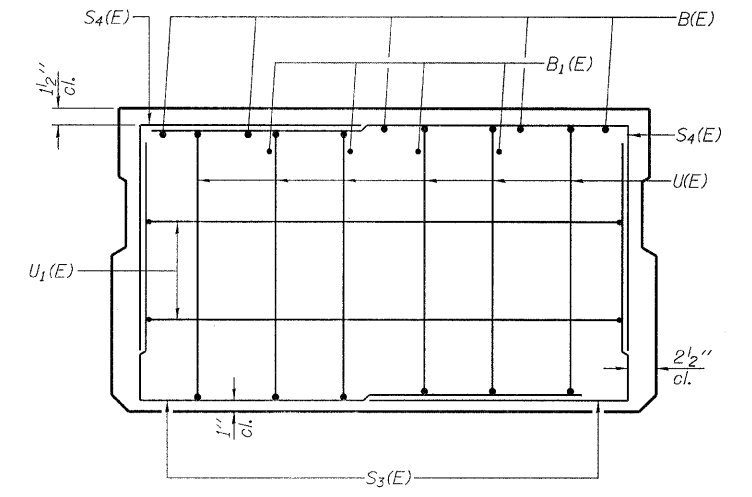


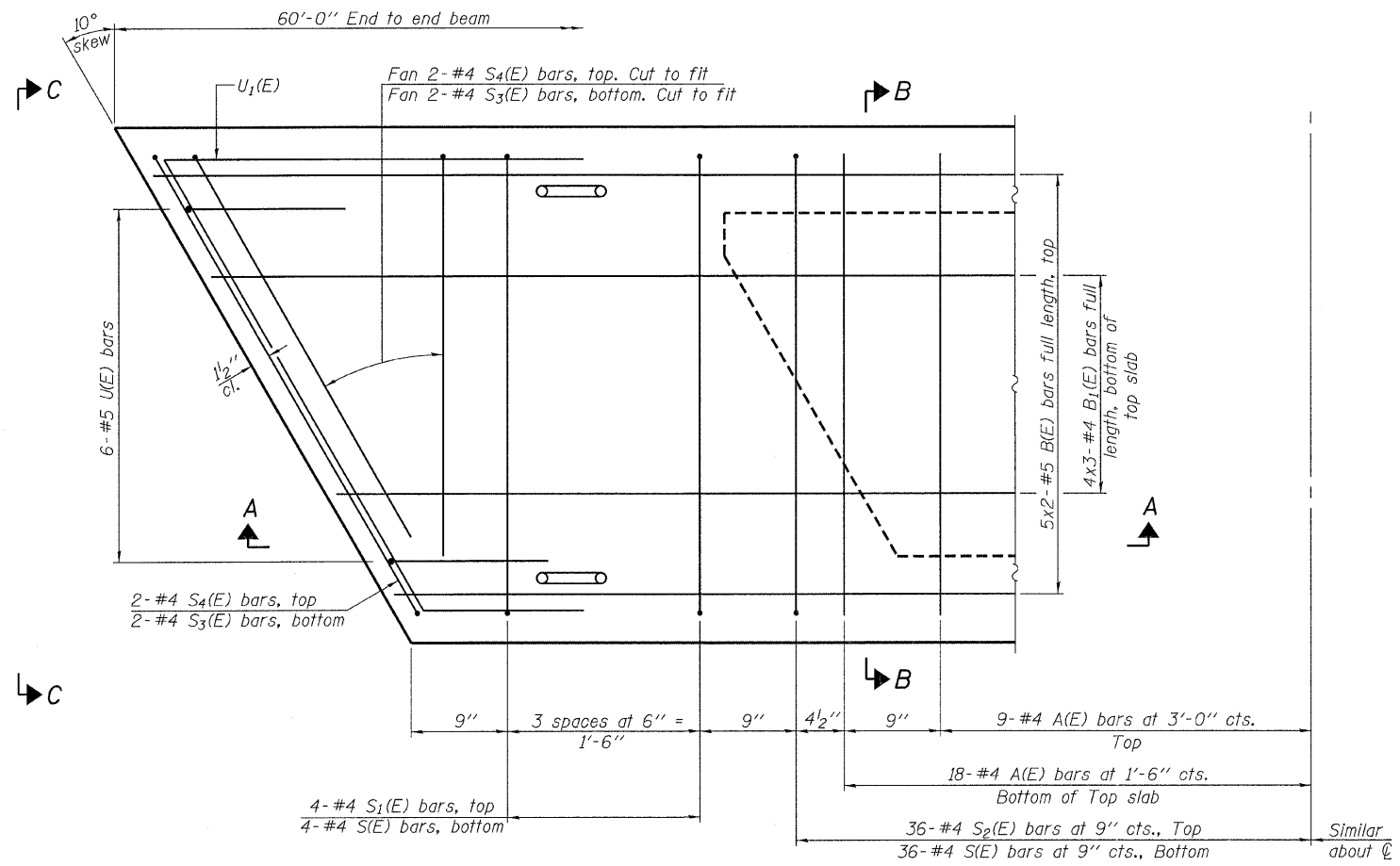
SECTION A-A



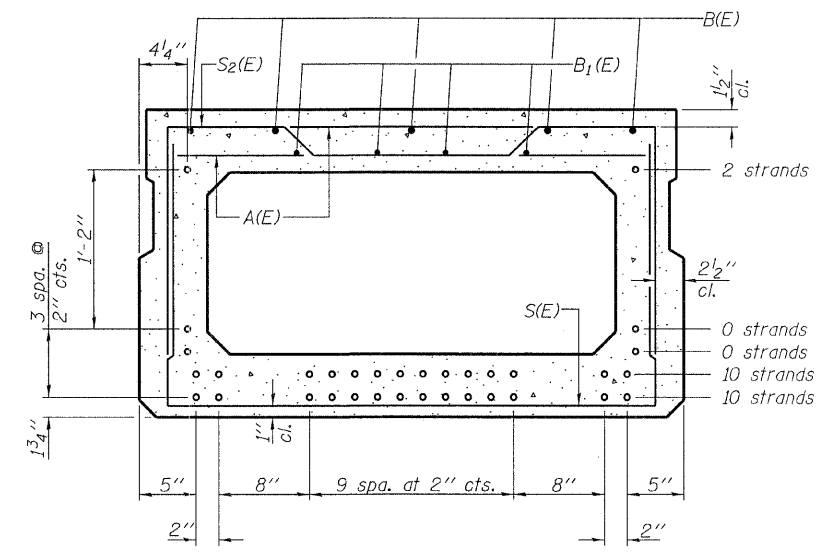
SECTION B-B
(Showing dimensions)



VIEW C-C



PLAN VIEW



SECTION B-B

(Showing reinforcement and permissible strand locations)
Note: Place the number of strands specified in each row symmetrically about the centerline of beam in the permissible strand locations shown.

BAR LIST
ONE BEAM ONLY
(For information only)

Bar	No.	Size	Length	Shape
A(E)	54	#4	3'-7"	—
B(E)	10	#5	31'-2"	—
B1(E)	12	#4	21'-3"	—
S(E)	80	#4	7'-5"	┌
S1(E)	8	#4	6'-11"	┌
S2(E)	72	#4	7'-2"	┌
S3(E)	8	#4	4'-8"	┌
S4(E)	8	#4	4'-5"	┌
U(E)	12	#5	4'-6"	┌
U1(E)	4	#4	6'-8"	┌

Note: See sheets 3 & 4 of 10 for additional details and Bill of Material.

Notes:
Spacing of S(E) and S2(E) bars may be adjusted up to 4" in the immediate area of the transverse tie diaphragms to miss the block outs for the transverse ties.
Bars indicated thus 5x2-#5 etc. indicates 5 lines of bars with 2 lengths per line.

MINIMUM BAR LAP
#4 bar = 2'-0"
#5 bar = 2'-6"

PD-2748-R 7-1-10

FILE NAME = 110071-shc-bridge.dgn	USER NAME =	DESIGNED - A.S.L.	REVISED -
HAMPTON, LENZINI AND RENWICK, INC. 300 STEVENSON DRIVE, SUITE 201 SPRINGFIELD, ILLINOIS 62761		CHECKED - S.W.M.	REVISED -
ILLINOIS PROFESSIONAL DESIGN FIRM L5 / PE / SE CORP. 184.000959	PLOT SCALE =	DRAWN - D.A.B.	REVISED -
	PLOT DATE = 2/10/2012	CHECKED - S.W.M.	REVISED -

STATE OF ILLINOIS
WHITE COUNTY HIGHWAY DEPARTMENT

27" x 48" PPC DECK BEAM
STRUCTURE NO. 097-3275

SHEET NO. 2 OF 10 SHEETS

T.R.	SECTION	COUNTY	TOTAL SHEETS	SHEET NO.
251	09-08140-00-BR	WHITE	14	6
INDIAN CREEK ROAD DISTRICT		CONTRACT NO. 99474		
ILLINOIS FED. AID PROJECT				