

**HIGH VOLTAGE WIRING SCHEMATIC**

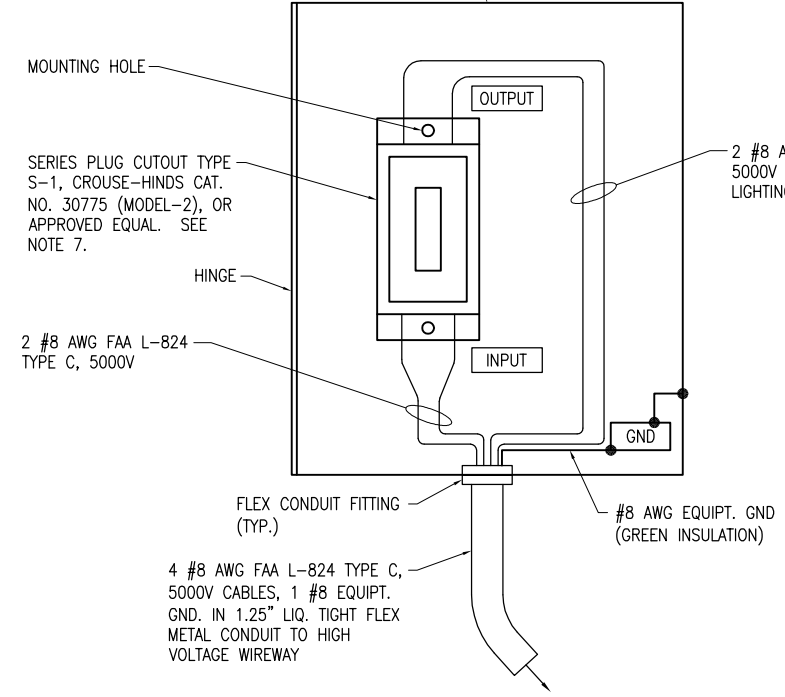
**NOTES**

1. PROVIDE PHENOLIC ENGRAVED LEGEND PLATES FOR EACH CONSTANT CURRENT REGULATOR (EXISTING & NEW) NOTING THE RUNWAY AND/OR TAXIWAY SERVED.
2. EACH PLUG CUTOUT CABINET SHALL BE FURNISHED WITH A PHENOLIC ENGRAVED LEGEND PLATE THAT IDENTIFIES THE RESPECTIVE RUNWAY OR TAXIWAY CIRCUIT OR REGULATOR. INCLUDE AN ADDITIONAL LEGEND PLATE LABELED "CAUTION OPERATE CUTOFFS WITH CCR SHUT OFF".
3. PROVIDE PHENOLIC ENGRAVED LEGEND PLATES FOR THE CUTOFFS TO IDENTIFY THE RESPECTIVE REGULATOR OUTPUT CONNECTION AND THE RESPECTIVE CIRCUIT LOAD CONNECTION.
4. BOND REGULATOR FRAME TO VAULT GROUND BUS WITH A DEDICATED #6 AWG BONDING JUMPER.
5. PROVIDE ADEQUATE WORKING SPACE IN FRONT OF EACH CUTOFF ENCLOSURE TO MEET NEC CLEARANCE REQUIREMENTS.
6. LIQUID TIGHT FLEXIBLE METAL CONDUIT AND ASSOCIATED FITTINGS SHALL BE U.L. LISTED TO MEET THE REQUIREMENTS OF NEC 350.6, SUITABLE FOR GROUNDING AND SUNLIGHT RESISTANT. LIQUID TIGHT FLEXIBLE METAL CONDUIT THAT IS USED FOR FLEXIBILITY (INCLUDING CONNECTIONS TO CCR'S & TRANSFORMERS) SHALL REQUIRE AN EXTERNAL BONDING JUMPER OR INTERNAL EQUIPMENT GROUNDING CONDUCTOR PER NEC 350.60. EXTERNAL BONDING JUMPERS USED WITH CCR INSTALLATIONS SHALL BE #6 AWG COPPER (MINIMUM). DO NOT INSTALL LIQUID TIGHT FLEXIBLE METAL CONDUIT THAT IS NOT UL LISTED. CONFIRM LIQUID TIGHT FLEXIBLE METAL CONDUIT BEARS THE UL LABEL PRIOR TO INSTALLING IT.
7. SERIES PLUG CUTOFFS SHALL BE TYPE S-1, RATED 5000 VOLTS, 20-AMP, AND SHALL COMPLY WITH FAA AC 150/5340-4C. SERIES PLUG CUTOFFS SHALL BE RATED SUITABLE FOR NORMAL OPERATION WITH HANDLE REMOVED OR HANDLE INSERTED. CUTOFFS SHALL DISCONNECT THE INPUT FROM THE OUTPUT, SHORT THE INPUT TERMINALS, AND SHORT THE OUTPUT TERMINALS WHEN THE HANDLE/PLUG IS REMOVED. CUTOFFS SHALL BE SUITABLE FOR MANUAL TRANSFER OPERATION (ONE SERIES CIRCUIT LOOP WITH THE CAPABILITY OF BEING POWERED FROM EITHER OF TWO CONSTANT CURRENT REGULATOR POWER SOURCES). SERIES PLUG CUTOFFS SHALL BE CROUSE-HINDS CAT. NO. 30775, OR APPROVED EQUAL. THE RESPECTIVE MANUFACTURER SHALL CERTIFY IN WRITING THAT THEIR CUTOFF IS SUITABLE AND RATED FOR THE RESPECTIVE APPLICATION.
8. HIGH VOLTAGE & LOW VOLTAGE CIRCUITS SHALL NOT BE INSTALLED IN THE SAME WIREWAY.

**LEGEND**

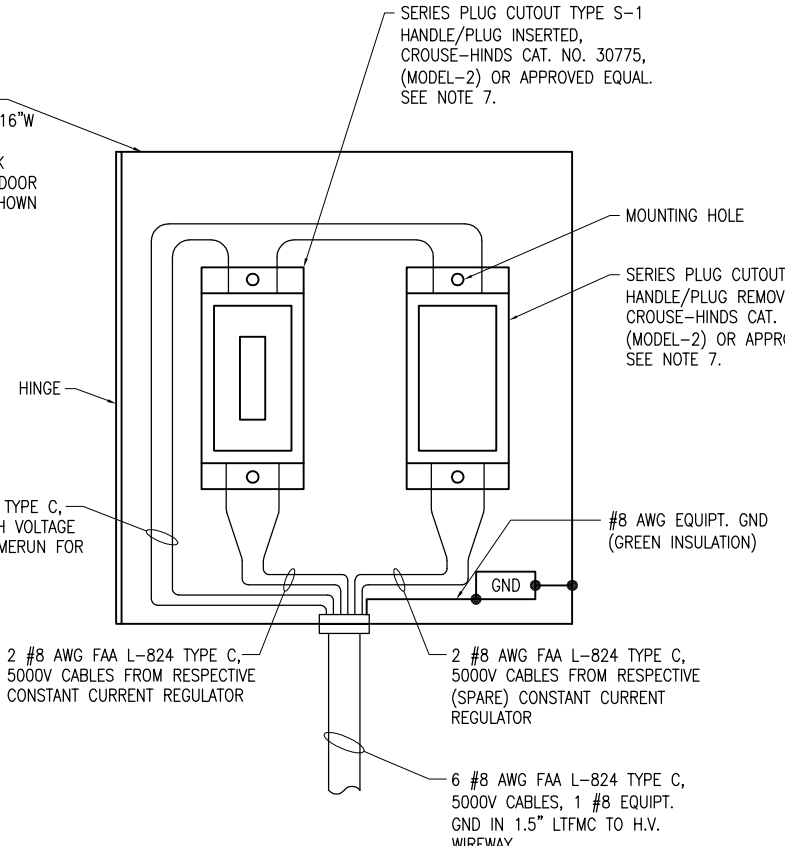
- "I" DENOTES PLUG CUTOUT WITH PLUG INSERTED
- "P" DENOTES PLUG CUTOUT WITH PLUG PULLED
- "CCR" DENOTES CONSTANT CURRENT REGULATOR

14"H x 12"W x 8"D (APPROXIMATE DIMENSIONS) NEMA 1 OR NEMA 12 ENCLOSURE WITH HINGED COVER & BACK PANEL. NOTE FRONT DOOR OF ENCLOSURE NOT SHOWN FOR CLARITY. ADJUST ENCLOSURE DIMENSIONS AS NECESSARY TO ACCOMMODATE THE RESPECTIVE CUTOFF.



**SERIES PLUG CUTOUT MOUNTING DETAIL FOR TAXIWAY CIRCUIT**  
NOT TO SCALE

NEMA 1 OR NEMA 12 ENCLOSURE (MINIMUM 16"W x 16"H x 8"D) WITH HINGED COVER & BACK PANEL. NOTE FRONT DOOR OF ENCLOSURE NOT SHOWN FOR CLARITY.



**SERIES PLUG CUTOUT MOUNTING DETAIL FOR RUNWAY CIRCUIT**  
NOT TO SCALE

MAR 09, 2012 2:03 PM KINC00394 E:\100085\1000047\1000047D\CAD\AIRPORT\SHETS\E-608.DWG

REVISION	
DATE	
SHELBY COUNTY AIRPORT SHELBYVILLE, ILLINOIS	
A.I.P. PROJ.: 3-17-0093-B11	
IL PROJ.: 2HO-4149	
Hanson Proj. No. 10A0047	12/14/11
Filename E-608.DWG	CNS 01/18/12
Scale NONE	DRAWN KNL
Date 02/18/12	REVIEWED KNL/CAH
<p>HANSON Professional Services Inc. 2012 1525 South Sixth Street Springfield, Illinois 62703-2986 Ph: (217) 788-2450 Fax: (217) 788-2503 www.hanson-inc.com Offices Nationwide</p>	
<p><b>CONSTRUCT VAULT, LIGHT TAXIWAY &amp; INSTALL NAVAIDS</b></p> <p><b>HIGH VOLTAGE WIRING SCHEMATIC</b></p>	
34	
4 of 39 sheets	