

STATE OF ILLINOIS
DEPARTMENT OF TRANSPORTATION

F.A.P. RTE.	SECTION	COUNTY	TOTAL SHEETS	SHEET NO.
311	9Y-RS-7	DUPAGE/COOK	35	1
ILLINOIS			CONTRACT NO. 62F56	

*35+19 = 54 TOTAL SHEETS
D-81-014-18

FOR INDEX OF SHEETS, SEE SHEET NO. 2

THIS PROJECT IS LOCATED IN THE VILLAGE OF HINSDALE

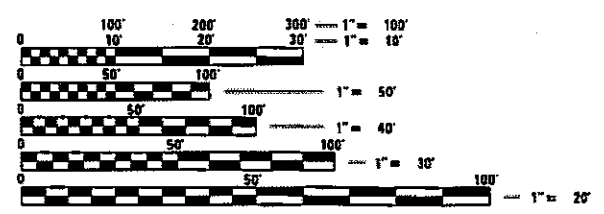
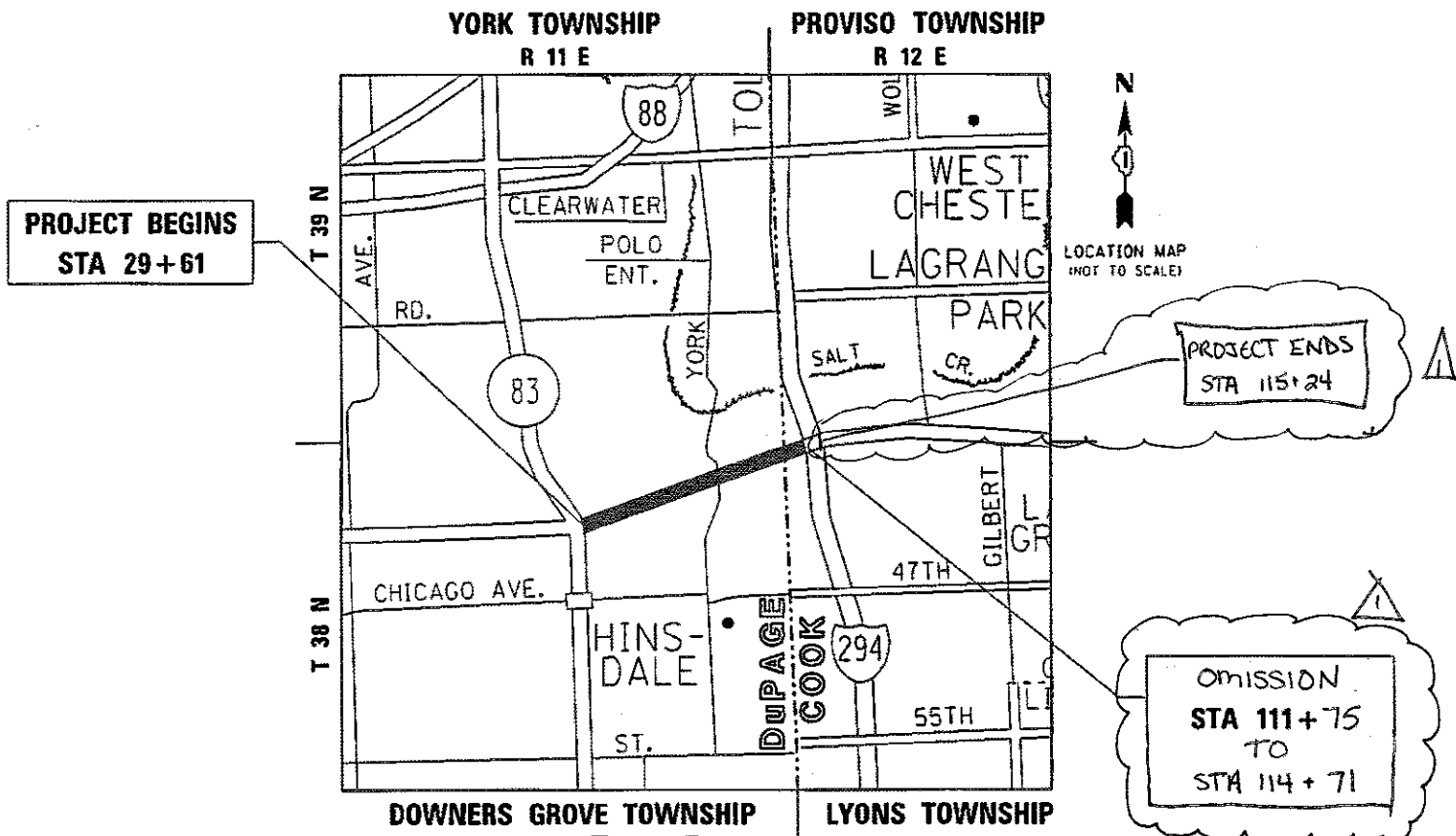
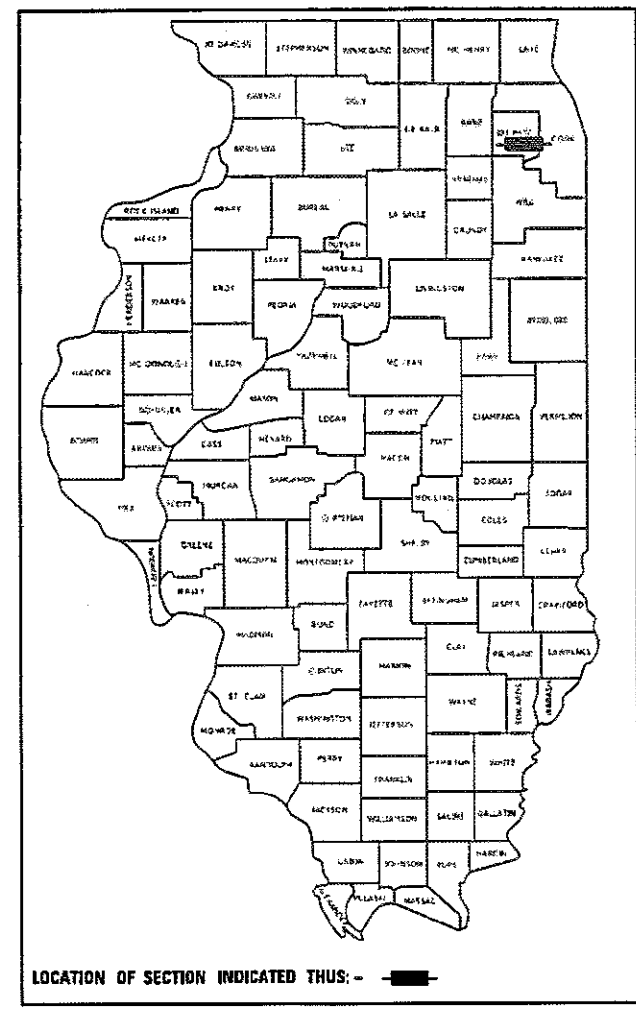
PROPOSED HIGHWAY PLANS

FAP ROUTE 311: US 34 (OGDEN AVENUE)
EAST OF IL 83 (KINGERY HWY) TO WEST OF I-294 (TRI-STATE TOLLWAY)
SECTION: 9Y-RS-7
PROJECT: NHPP-XA04(258)
RESURFACING (3P), PEDESTRIAN RAMPS
DuPAGE / COOK COUNTY

C-91-015-18

TRAFFIC DATA:

US 34 (OGDEN AVE):
PROJECT BEGIN TO YORK RD:
ADT (2016) = 31,900
SPEED LIMIT = 35 MPH (POSTED)
YORK RD TO PROJECT END:
ADT (2016) = 34,700
SPEED LIMIT = 35 MPH (POSTED)



FULL SIZE PLANS HAVE BEEN PREPARED USING STANDARD ENGINEERING SCALES. REDUCED SIZED PLANS WILL NOT CONFORM TO STANDARD SCALES. IN MAKING MEASUREMENTS ON REDUCED PLANS, THE ABOVE SCALES MAY BE USED.

J.U.L.I.E.
JOINT UTILITY LOCATION INFORMATION FOR EXCAVATION
1-800-892-0123
OR 811

PROJECT ENGINEER: KARI SMITH (847) 705-4437
PROJECT MANAGER: FAWAD AQUEEL (847) 705-4247

CONTRACT NO. 62F56

GROSS LENGTH = 8,563 FT = 1.622 MILES
NET LENGTH = 8,267 FT = 1.566 MILES

STATE OF ILLINOIS
DEPARTMENT OF TRANSPORTATION
SUBMITTED January 30, 2018
Anthony J. Quigley / AEB REGIONAL ENGINEER
Mark [Signature] 2018 ENGINEER OF DESIGN AND ENVIRONMENT
Paul [Signature] 2018 DIRECTOR OF HIGHWAYS PROJECT IMPLEMENTATION


PRINTED BY THE AUTHORITY OF THE STATE OF ILLINOIS

REV 4-16-18

INDEX OF SHEETS

STATE STANDARDS

GENERAL NOTES

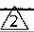
SHEET NO.	DESCRIPTION
1	COVER SHEET
2-3	INDEX OF SHEETS, STATE STANDARDS & GENERAL NOTES
4-7	SUMMARY OF QUANTITIES
8-10	TYPICAL SECTIONS
11	SCHEDULE OF QUANTITIES
12-15	ROADWAY AND PAVEMENT MARKING PLAN
15A-15C	BRIDGE PLANS (FOR INFORMATION ONLY)
15D-15J	SUGGESTED MAINTENANCE OF TRAFFIC PLANS 
16-16I	CURB RAMPS IMPROVEMENT PLANS
17-19	DETECTOR LOOP REPLACEMENT PLAN
20	BD-01: DRIVEWAY DETAILS - DISTANCE BETWEEN R.O.W. AND FACE OF CURB OR EDGE OF SHOULDER GREATER THAN OR EQUAL TO 15' (4.5 M)
21	BD-02: DRIVEWAY DETAILS - DISTANCE BETWEEN R.O.W. AND FACE OF CURB IS LESS THAN 15' (4.5 M)
22	BD-08: DETAILS FOR FRAMES AND LIDS ADJUSTMENT WITH MILLING
23	BD-22: PAVEMENT PATCHING FOR HMA SURFACED PAVEMENT
24	BD-24: CURB OR CURB AND GUTTER REMOVAL AND REPLACEMENT
25	BD-32: BUTT JOINT AND HMA TAPER DETAILS
26	TC-08: ENTRANCE AND EXIT RAMP CLOSURE DETAILS
27	TC-10: TRAFFIC CONTROL AND PROTECTION FOR SIDE ROADS, INTERSECTIONS AND DRIVEWAYS
28	TC-11: TYPICAL APPLICATIONS: RAISED REFLECTIVE PAVEMENT MARKERS (SNOW-PLOW RESISTANT)
29	TC-13: DISTRICT ONE TYPICAL PAVEMENT MARKINGS
30	TC-14: TRAFFIC CONTROL AND PROTECTION AT TURN BAYS (TO REMAIN OPEN TO TRAFFIC)
31	TC-16: PAVEMENT MARKING LETTERS AND SYMBOLS FOR TRAFFIC STAGING
32	TC-17: TRAFFIC CONTROL DETAILS FOR FREEWAY SHOULDER CLOSURES AND PARTIAL RAMP CLOSURES
33	TC-22: ARTERIAL ROAD INFORMATION SIGN
34	TS-05: DISTRICT 1 - STANDARD TRAFFIC SIGNAL DESIGN DETAILS (SHEET 2 OF 7)
35	TS-07: DISTRICT 1 - DETECTOR LOOP INSTALLATION DETAILS FOR ROADWAY RESURFACING

STANDARD NO.	DESCRIPTION
000001-06	STANDARD SYMBOLS, ABBREVIATIONS AND PATTERNS
424001-10	PERPENDICULAR CURB RAMPS FOR SIDEWALKS
424006-03	DIAGONAL CURB RAMPS FOR SIDEWALKS
424011-03	CORNER PARALLEL CURB RAMPS FOR SIDEWALKS
424016-04	MID-BLOCK CURB RAMPS FOR SIDEWALKS
424021-04	DEPRESSED CORNER FOR SIDEWALKS
442201-03	CLASS C AND D PATCHES
604001-04	FRAME AND LIDS TYPE 1
606001-07	CONCRETE CURB TYPE B AND COMBINATION CONCRETE CURB AND GUTTER
701101-05	OFF-RD OPERATIONS, MULTILANE, 15' (4.5 m) TO 24' (600 mm) FROM PAVEMENT EDGE
701411-09	LANE CLOSURE, MULTILANE, AT ENTRANCE OR EXIT RAMP, FOR SPEEDS ≥ 45 MPH
701427-05	LANE CLOSURE, MULTILANE, INTERMITTENT OR MOVING OPERATION, FOR SPEEDS ≤ 40 MPH
701601-09	URBAN LANE CLOSURE, MULTILANE, 1W OR 2W WITH NONTRAVERSABLE MEDIAN
701602-09	URBAN LANE CLOSURE, MULTILANE, 2W WITH BIDIRECTIONAL LEFT TURN LANE
701606-10	URBAN SINGLE LANE CLOSURE, MULTILANE, 2W WITH MOUNTABLE MEDIAN
701701-10	URBAN LANE CLOSURE, MULTILANE INTERSECTION
701801-06	SIDEWALK, CORNER OR CROSSWALK CLOSURE
701901-07	TRAFFIC CONTROL DEVICES
814001-03	HANDHOLES

- BEFORE STARTING ANY EXCAVATION, THE CONTRACTOR SHALL CALL "JULIE" AT (800) 892-0123 OR 811 FOR FIELD LOCATIONS OF BURIED ELECTRIC, TELEPHONE, AND GAS FACILITIES. (48 HOUR NOTIFICATION REQUIRED)
- THE CONTRACTOR SHALL COORDINATE CONSTRUCTION ACTIVITIES WITH UTILITY COMPANIES, VILLAGE OF HINSDALE AND ILLINOIS STATE TOLL HIGHWAY AUTHORITY.
- FRAMES AND GRATES ADJUSTMENT OF PRIVATE UTILITIES WITHIN THE LIMITS OF THE IMPROVEMENTS SHALL BE DONE BY THEIR RESPECTIVE OWNERS AND ARE NOT PART OF THIS CONTRACT.
- THE CONTRACTOR SHALL CONTACT DISTRICT ONE ARTERIAL TRAFFIC CONTROL SUPERVISOR AT (847) 705-4470 A MINIMUM OF 72 HOURS IN ADVANCE OF BEGINNING WORK.
- THE CONTRACTOR WILL NOT BE ALLOWED TO SET UP A YARD OR FIELD OFFICE ON STATE PROPERTY WITHOUT THE WRITTEN PERMISSION OF THE DEPARTMENT.
- UNLESS OTHER CONDITIONS WARRANT EXTENDED LANE CLOSURE AS DETERMINED AND APPROVED IN WRITING BY THE RESIDENT ENGINEER OR AS PROVIDED FOR IN THE CONTRACT SPECIFICATIONS, OVERNIGHT CLOSURES SHALL NOT BE ALLOWED FOR REHABILITATION PROJECTS INVOLVING DAYTIME MILLING AND RESURFACING OPERATIONS AND CLASS D PATCHING.
- IT SHALL BE THE CONTRACTOR'S RESPONSIBILITY TO VERIFY ALL DIMENSIONS AND CONDITIONS EXISTING IN THE FIELD PRIOR TO CONSTRUCTION AND ORDERING OF MATERIALS.
- DO NOT SCALE PLANS FOR CONSTRUCTION DIMENSIONS.
- THE CONTRACTOR SHALL BE REQUIRED TO PROVIDE ACCESS TO ABUTTING PROPERTY AT ALL TIMES DURING THE CONSTRUCTION OF THIS PROJECT.
- ALL PAVEMENT PATCHING LOCATIONS WILL BE DETERMINED IN THE FIELD BY THE RESIDENT ENGINEER/TECHNICIAN.
- LOCATION OF COMBINATION CONCRETE CURB AND GUTTER REMOVAL AND REPLACEMENT (OR COMBINATION CURB AND GUTTER (THE TYPE SPECIFIED ON THE PLANS)), WILL BE DETERMINED IN THE FIELD BY THE RESIDENT ENGINEER/TECHNICIAN.
- CATCH BASINS, MANHOLES, INLETS, DRAINAGE STRUCTURES AND VALVE VAULTS ADJUSTMENT AND/OR RECONSTRUCTION LOCATIONS WILL BE DETERMINED IN THE FIELD BY THE RESIDENT ENGINEER / TECHNICIAN.
- EXISTING BROKEN FRAMES AND LIDS SHALL BE REMOVED AND DISPOSED OF BY THE CONTRACTOR AND SHALL BE REPLACED AS DIRECTED BY THE ENGINEER. REPLACEMENT FRAMES AND LIDS WILL BE PAID FOR ACCORDING TO ARTICLE 109.04 OF THE STANDARD SPECIFICATIONS, UNLESS A SEPARATE PAY ITEM HAS BEEN PROVIDED.
- WHEN MILLED PAVEMENT IS OPEN TO TRAFFIC, THE MAXIMUM GRADE DIFFERENTIAL BETWEEN PASSES OF THE MILLING MACHINE SHALL NOT EXCEED 1/2 INCHES WHERE THE SPEED LIMIT IS 45 MPH OR LESS, AND 1 INCH WHERE THE SPEED LIMIT IS OVER 45 MPH. WITH WRITTEN APPROVAL FROM THE RESIDENT ENGINEER, A MAXIMUM GRADE DIFFERENTIAL OF 3 INCHES MAY BE ALLOWED IF THE EDGE OF THE MILLING IS SLOPED A MINIMUM OF 1V:3H.
- BUTT JOINTS WILL BE INSTALLED AT THE ENDS OF RESURFACING (WHERE RESURFACING MEETS EXISTING PAVEMENT) IN ACCORDANCE WITH THE "BUTT JOINT AND HMA TAPER DETAILS" SHEET INCLUDED IN THE PLANS, UNLESS OTHERWISE SPECIFIED.
- THE RESIDENT ENGINEER SHALL CONTACT DON CHIARUGI, AREA TRAFFIC FIELD ENGINEER, VIA E-MAIL AT DON.CHIARUGI@ILLINOIS.GOV, A MINIMUM OF 2 WEEKS PRIOR TO PLACEMENT OF PERMANENT PAVEMENT MARKINGS.
- BEFORE BEGINNING ANY WORK, THE CONTRACTOR SHALL RETAIN AND RECORD FOR FUTURE REFERENCE, ALL EXISTING PAVEMENT MARKING LINES (AND RAISED REFLECTIVE PAVEMENT MARKERS) IN ORDER THAT THESE LOCATIONS CAN BE RE-ESTABLISHED FOR STRIPING. EXACT LOCATIONS OF ALL PAVEMENT MARKINGS SHALL BE AS DIRECTED BY THE RESIDENT ENGINEER.
- ALL DAMAGE TO EXISTING PAVEMENT MARKINGS OR RAISED REFLECTIVE PAVEMENT MARKERS OUTSIDE THE REMOVAL LINE SHOWN ON THE PLANS SHALL BE REPLACED AT NO ADDITIONAL COST TO THE DEPARTMENT.
- ANY PAVEMENT MARKINGS AND RAISED REFLECTIVE PAVEMENT MARKERS OBLITERATED BY MILLING AND RESURFACING OPERATIONS ON SIDE STREETS AND ENTRANCES SHALL BE REPLACED AND PAID FOR IN KIND.
- PAVEMENT MARKING TAPE, TYPE III SHALL BE USED FOR SHORT TERM PAVEMENT MARKINGS ON ALL FINAL SURFACES.

SEE SHEET 3 FOR CONTINUATION

MODEL: D:\RAJ\...
 FILE NAME: ...


USER NAME = Vellckovv	DESIGNED -	REVISED - 4/13/18 
PLOT SCALE = 100.0000' / in.	DRAWN -	REVISED -
PLOT DATE = 4/13/2018	CHECKED -	REVISED -
	DATE -	REVISED -

**STATE OF ILLINOIS
DEPARTMENT OF TRANSPORTATION**

**US 34 (E. OF IL 83 (KINGERY HWY) TO W. OF I-294 (TRI-STATE TOLLWAY))
INDEX OF SHEETS, STATE STANDARDS & GENERAL NOTES**

SCALE:	SHEET	OF	SHEETS	STA.	TO	STA.
--------	-------	----	--------	------	----	------

F.A.P. RTE.	SECTION	COUNTY	TOTAL SHEETS	SHEET NO.
311	9Y-RS-7	DUPAGE/COOK	35	2
CONTRACT NO. 62F56			ILLINOIS FED. AID PROJECT	

 **REV 4-16-18**

URBAN

SUMMARY OF QUANTITIES			CONSTRUCTION TYPE CODE			
CODE NO	ITEM	UNIT	TOTAL QUANTITIES	0005 80% FED 20% STATE DuPAGE COUNTY	0005 80% FED 20% STATE COOK COUNTY	
20100110	TREE REMOVAL (6 TO 15 UNITS DIAMETER)	UNIT	120	120		
20100210	TREE REMOVAL (OVER 15 UNITS DIAMETER)	UNIT	60	60		
20101350	TREE PRUNING (OVER 10 INCH DIAMETER)	EACH	10	10		
20200100	EARTH EXCAVATION	CU YD	33	32	1	
21101615	TOPSOIL FURNISH AND PLACE, 4"	SO YD	215	210	5	
25000400	NITROGEN FERTILIZER NUTRIENT	POUND	3	2.9	0.1	
25000500	PHOSPHORUS FERTILIZER NUTRIENT	POUND	3	2.9	0.1	
25000600	POTASSIUM FERTILIZER NUTRIENT	POUND	3	2.9	0.1	
25200110	SODDING, SALT TOLERANT	SO YD	237	231	6	
25200200	SUPPLEMENTAL WATERING	UNIT	10	10		
35501308	HOT-MIX ASPHALT BASE COURSE, .6"	SO YD	9	9		
35501316	HOT-MIX ASPHALT BASE COURSE, .8"	SO YD	42	42		
40600290	BITUMINOUS MATERIALS (TACK COAT)	POUND	36760	30830	5930	
40600400	MIXTURE FOR CRACKS, JOINTS, AND FLANGEWAYS	TON	83	69	14	
40600827	POLYMERIZED LEVELING BINDER (MACHINE METHOD), IL-4.75, N50	TON	2260	1920	340	

URBAN

SUMMARY OF QUANTITIES			CONSTRUCTION TYPE CODE			
CODE NO	ITEM	UNIT	TOTAL QUANTITIES	0005 80% FED 20% STATE DuPAGE COUNTY	0005 80% FED 20% STATE COOK COUNTY	
40600982	HOT-MIX ASPHALT SURFACE REMOVAL - BUTT JOINT	SO YD	489	394	95	
40601005	HOT-MIX ASPHALT REPLACEMENT OVER PATCHES	TON	1480	1380	100	
40603335	HOT-MIX ASPHALT SURFACE COURSE, MIX "D", N50	TON	6	6		
42001300	PROTECTIVE COAT	SO YD	461	447	14	
42300400	PORTLAND CEMENT CONCRETE DRIVEWAY PAVEMENT, 8 INCH	SO YD	60	60		
42400200	PORTLAND CEMENT CONCRETE SIDEWALK 5 INCH	SO FT	3237	3155	82	
42400800	DETECTABLE WARNINGS	SO FT	266	256	10	
44000156	HOT-MIX ASPHALT SURFACE REMOVAL, 1 3/4"	SO YD	1050		1050	
44000159	HOT-MIX ASPHALT SURFACE REMOVAL, 2 1/2"	SO YD	53710	45630	8080	
44000200	DRIVEWAY PAVEMENT REMOVAL	SO YD	51	51		
44000600	SIDEWALK REMOVAL	SO FT	3180	3115	65	
44002214	HOT-MIX ASPHALT REMOVAL OVER PATCHES, 3 1/2"	SO YD	485		485	

* = SPECIALTY ITEMS

FILE NAME =	USER NAME = Valchikov	DESIGNED -	REVISED -
OFFICE/DISTRICT/PROJECT/DATE/SCALE/PLotted	OFFICE/DISTRICT/PROJECT/DATE/SCALE/PLotted	CHECKED -	REVISED -
PLotted	PLotted	DATE -	REVISED -

**STATE OF ILLINOIS
DEPARTMENT OF TRANSPORTATION**

**US 34 (E. OF IL 83 (KINGERY HWY) TO W. OF I-294 (TRI-STATE TOLLWAY))
SUMMARY OF QUANTITIES**

F.A.P. RTE. 311	SECTION 9Y-RS-7	COUNTY DUPAGE/COOK	TOTAL SHEETS 35	SHEET NO. 4
CONTRACT NO. 62F56				
FED. ROAD DIST. NO. 1 ILLINOIS FED. AID PROJECT				

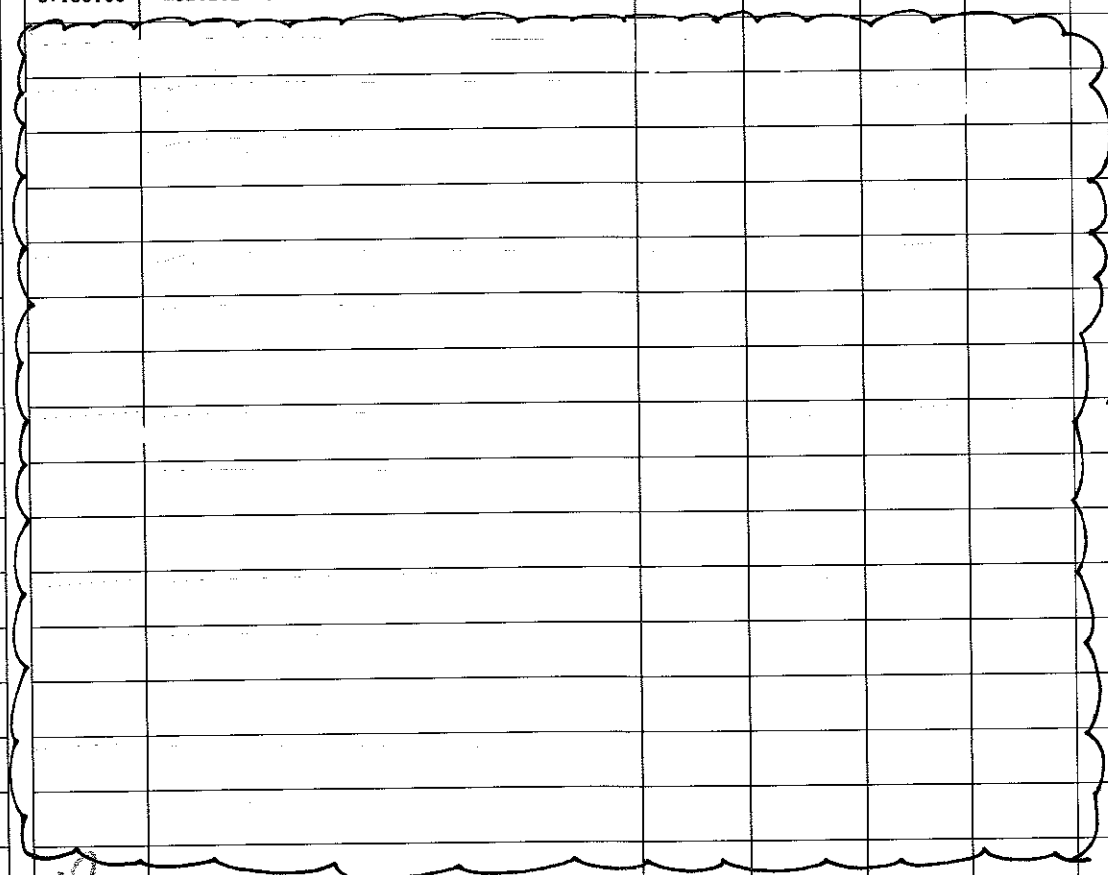
REV

URBAN

URBAN

SUMMARY OF QUANTITIES			CONSTRUCTION TYPE CODE						
CODE NO	ITEM	UNIT	TOTAL QUANTITIES	0005 80% FED 20% STATE DUPAGE COUNTY	0005 80% FED 20% STATE COOK COUNTY				
44002236	HOT-MIX ASPHALT REMOVAL OVER PATCHES, 9"	SO YD	2738	2738					
44201737	CLASS D PATCHES, TYPE I, 8 INCH	SO YD	137	137					
44201741	CLASS D PATCHES, TYPE II, 8 INCH	SO YD	548	548					
44201745	CLASS D PATCHES, TYPE III, 8 INCH	SO YD	685	685					
44201747	CLASS D PATCHES, TYPE IV, 8 INCH	SO YD	1369	1369					
44201798	CLASS D PATCHES, TYPE I, 13 INCH	SO YD	25		25				
44201803	CLASS D PATCHES, TYPE II, 13 INCH	SO YD	97		97				
44201807	CLASS D PATCHES, TYPE III, 13 INCH	SO YD	122		122				
44201809	CLASS D PATCHES, TYPE IV, 13 INCH	SO YD	243		243				
60250200	CATCH BASINS TO BE ADJUSTED	EACH	4	4					
60250400	CATCH BASINS TO BE ADJUSTED WITH NEW TYPE I FRAME, OPEN LID	EACH	1	1					
60252800	CATCH BASINS TO BE RECONSTRUCTED	EACH	2	2					
60255500	MANHOLES TO BE ADJUSTED	EACH	3	3					
60260100	INLETS TO BE ADJUSTED	EACH	5	4	1				
60262700	INLETS TO BE RECONSTRUCTED	EACH	2	2					
60300105	FRAMES AND GRATES TO BE ADJUSTED	EACH	16	15	1				

SUMMARY OF QUANTITIES			CONSTRUCTION TYPE CODE						
CODE NO	ITEM	UNIT	TOTAL QUANTITIES	0005 80% FED 20% STATE DUPAGE COUNTY	0005 80% FED 20% STATE COOK COUNTY				
60400210	FRAMES, TYPE 3	EACH	1	1					
60406000	FRAMES AND LIDS, TYPE 1, OPEN LID	EACH	5	5					
60406100	FRAMES AND LIDS, TYPE 1, CLOSED LID	EACH	5	5					
* 66900200	NON-SPECIAL WASTE DISPOSAL	CU YD	33	32	1				
* 66900450	SPECIAL WASTE PLANS AND REPORTS	L SUM	1	1					
* 66900530	SOIL DISPOSAL ANALYSIS	EACH	3	3					
67000400	ENGINEER'S FIELD OFFICE, TYPE A	CAL MO	6	5	1				
67100100	MOBILIZATION	L SUM	1	0.8	0.2				



* = SPECIALTY ITEMS

FILE NAME =	USER NAME = Vellokav	DESIGNED -	REVISED -
OFFICE/SECTION/PROJECT/DATE	OFFICE/SECTION/PROJECT/DATE	CHECKED -	REVISED -
PLOT SCALE = 100,000' / 1"		DATE -	REVISED -
PLOT DATE = 2/1/2008			

**STATE OF ILLINOIS
DEPARTMENT OF TRANSPORTATION**

**US 34 (E. OF IL 83 (KINGERY HWY) TO W. OF I-294 (TRI-STATE TOLLWAY))
SUMMARY OF QUANTITIES**

F.A.P. RTE. 311	SECTION 9Y-R5-7	COUNTY DUPAGE/COOK	TOTAL SHEETS 35	SHEET NO. 5
CONTRACT NO. 62F56				
FED. ROAD DIST. NO. 1 ILLINOIS FED. AID PROJECT				

REV 4-16-18

REV

URBAN

SUMMARY OF QUANTITIES			CONSTRUCTION TYPE CODE			
CODE NO	ITEM	UNIT	TOTAL QUANTITIES	0005 80% FED 20% STATE DUPAGE COUNTY	0005 80% FED 20% STATE COOK COUNTY	
70300100	SHORT TERM PAVEMENT MARKING	FOOT	17520	16290	1230	
70300150	SHORT TERM PAVEMENT MARKING REMOVAL	SO FT	10050	5430	4620	△
70300210	TEMPORARY PAVEMENT MARKING LETTERS AND SYMBOLS	SO FT	580	580		
70300220	TEMPORARY PAVEMENT MARKING - LINE 4"	FOOT	25040	21240	3800	
70300240	TEMPORARY PAVEMENT MARKING - LINE 6"	FOOT	3090	3090		
70300250	TEMPORARY PAVEMENT MARKING - LINE 8"	FOOT	750	240	510	
70300260	TEMPORARY PAVEMENT MARKING - LINE 12"	FOOT	920	480	440	
70300280	TEMPORARY PAVEMENT MARKING - LINE 24"	FOOT	440	440		
70300520	PAVEMENT MARKING TAPE, TYPE III 4"	FOOT	5840	5430	410	
△ 70300904	PAVEMENT MARKING TAPE, TYPE IV, 4"	FOOT	7800		7800	
* 78000100	THERMOPLASTIC PAVEMENT MARKING - LETTERS AND SYMBOLS	SO FT	580	580		
△ 70300908	PAVEMENT MARKING TAPE, TYPE IV, 8"	FOOT	2400		2400	
* 78000200	THERMOPLASTIC PAVEMENT MARKING - LINE 4"	FOOT	25040	21240	3800	
	6"					
* 78000400	THERMOPLASTIC PAVEMENT MARKING - LINE 6"	FOOT	3090	3090		
	8"					
* 78000500	THERMOPLASTIC PAVEMENT MARKING - LINE 8"	FOOT	750	240	510	

URBAN

SUMMARY OF QUANTITIES			CONSTRUCTION TYPE CODE			
CODE NO	ITEM	UNIT	TOTAL QUANTITIES	0005 80% FED 20% STATE DUPAGE COUNTY	0005 80% FED 20% STATE COOK COUNTY	
* 78000600	THERMOPLASTIC PAVEMENT MARKING - LINE 12"	FOOT	920	480	440	
* 78008210	POLYUREA PAVEMENT MARKING TYPE I - LINE 4"	FOOT	200		200	△
* 78000650	THERMOPLASTIC PAVEMENT MARKING - LINE 24"	FOOT	440	440		
* 78008240	POLYUREA PAVEMENT MARKING TYPE I - LINE 8"	FOOT	200		200	△
* 78100100	RAISED REFLECTIVE PAVEMENT MARKER	EACH	825	740	85	
78300200	RAISED REFLECTIVE PAVEMENT MARKER REMOVAL	EACH	743	666	77	
* 85000200	MAINTENANCE OF EXISTING TRAFFIC SIGNAL INSTALLATION	EACH	1	1		
* 88600600	DETECTOR LOOP REPLACEMENT	FOOT	2503	2503		
* 89500400	RELOCATE EXISTING PEDESTRIAN PUSH-BUTTON	EACH	10	10		
* 89502376	REBUILD EXISTING HANDHOLE	EACH	4	4		
X0320050	CONSTRUCTION LAYOUT (SPECIAL)	L SUM	1	1		
X0325222	WEED CONTROL, BASAL TREATMENT	GALLON	4	4		
X0327611	REMOVE AND REINSTALL BRICK PAVEMENT	SQ FT	100	100		
X4060004	POLYMERIZED HOT-MIX ASPHALT SURFACE COURSE, STONE MATRIX ASPHALT, 9.5, N80	TON	5367	4472	895	
△ X5537800	STORM SEWERS TO BE CLEANED 12"	FOOT	124	124		

* = SPECIALTY ITEMS
 △ = NON-PARTICIPATING WORK (100% STATE)

FILE NAME =	USER NAME = Veltokov	DESIGNED -	REVISED -
Office: District 1 (Project: 0101418) CAD Data: Design: 0101418		REVISIONS	
PLOT SCALE = 1000000 / 1 in.	CHECKED -	REVISED -	
PLOT DATE = 2/1/2018	DATE -	REVISED -	

**STATE OF ILLINOIS
DEPARTMENT OF TRANSPORTATION**

US 34 (E. OF IL 83 (KINGERY HWY) TO W. OF I-294 (TRI-STATE TOLLWAY))
SUMMARY OF QUANTITIES

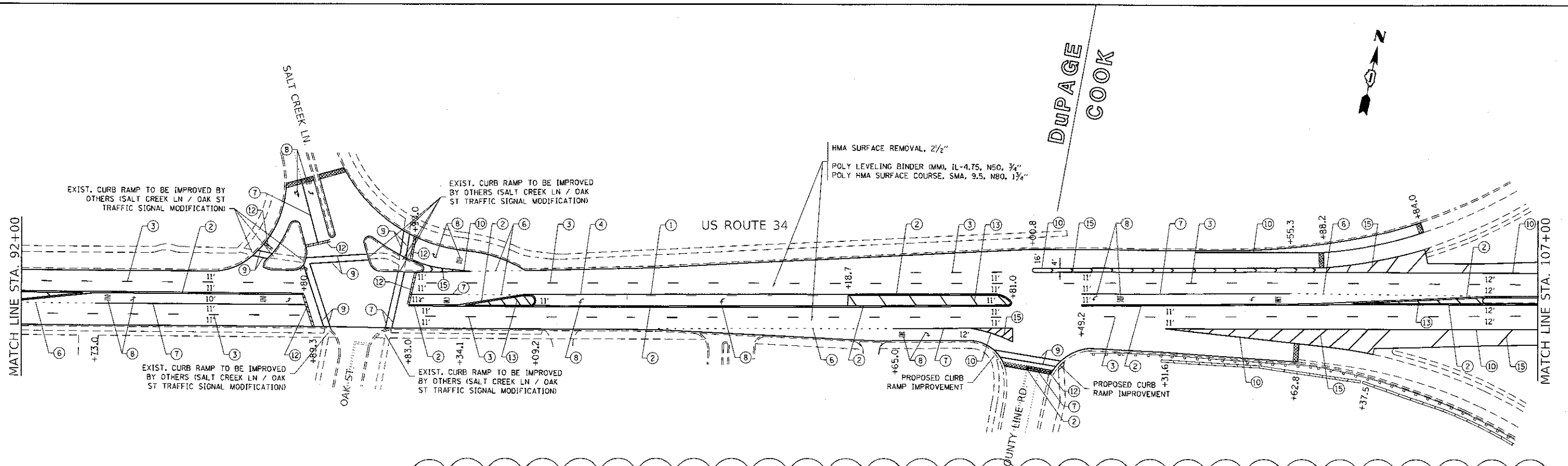
SCALE: SHEET NO. OF SHEETS STA. TO STA.

F.A.P. RTE. 311	SECTION 9Y-R5-7	COUNTY DUPAGE/COOK	TOTAL SHEETS 35	SHEET NO. 6
FED. ROAD DIST. NO. 1 (ILLINOIS) FED. AID PROJECT CONTRACT NO. 62F56				

12

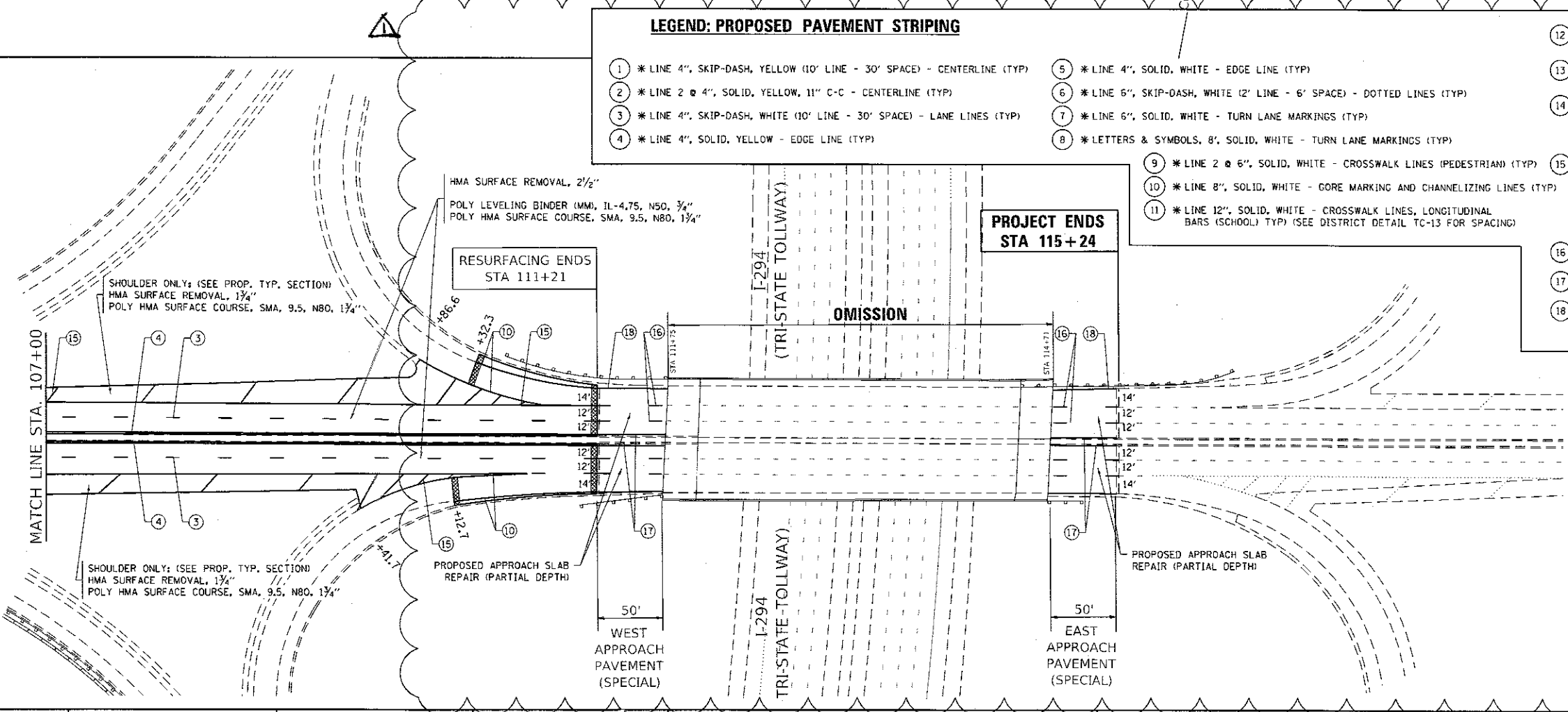
13

REV



LEGEND: PROPOSED PAVEMENT STRIPING

① * LINE 4", SKIP-DASH, YELLOW (10' LINE - 30' SPACE) - CENTERLINE (TYP)	⑤ * LINE 4", SOLID, WHITE - EDGE LINE (TYP)	⑫ * LINE 24", SOLID, WHITE - STOP LINES (TYP)
② * LINE 2 @ 4", SOLID, YELLOW, 11" C-C - CENTERLINE (TYP)	⑥ * LINE 6", SKIP-DASH, WHITE (2' LINE - 6' SPACE) - DOTTED LINES (TYP)	⑬ * LINE 12", SOLID, YELLOW - PAINTED MEDIANS DIAGONALS (TYP) (SEE DISTRICT DETAIL TC-13 FOR SPACING)
③ * LINE 4", SKIP-DASH, WHITE (10' LINE - 30' SPACE) - LANE LINES (TYP)	⑦ * LINE 6", SOLID, WHITE - TURN LANE MARKINGS (TYP)	⑭ * LINE 12", SOLID, WHITE - DIAGONALS (BIKE & EQUESTRIAN) @ 45° (TYP) - SHOULDER DIAGONALS @ 45° (TYP) (SEE DISTRICT DETAIL TC-13 FOR SPACING)
④ * LINE 4", SOLID, YELLOW - EDGE LINE (TYP)	⑧ * LETTERS & SYMBOLS, 8", SOLID, WHITE - TURN LANE MARKINGS (TYP)	⑮ * LINE 12", WHITE - GORE MARKING AND CHANNELIZATION LINES 45°. SEE TC-13 FOR DETAILS (TYP)
	⑨ * LINE 2 @ 6", SOLID, WHITE - CROSSWALK LINES (PEDESTRIAN) (TYP)	* = THERMOPLASTIC PAVEMENT MARKING -
	⑩ * LINE 8", SOLID, WHITE - GORE MARKING AND CHANNELIZING LINES (TYP)	⑯ POLYUREA PAVEMENT MARKING TYPE I - LINE 4", SOLID YELLOW
	⑪ * LINE 12", SOLID, WHITE - CROSSWALK LINES, LONGITUDINAL BARS (SCHOOL) TYP (SEE DISTRICT DETAIL TC-13 FOR SPACING)	⑰ PREFORMED PLASTIC PAVEMENT MARKING, TYPE B - LINE 7", WHITE (10' LINE - 30' SPACE)
		⑱ POLYUREA PAVEMENT MARKING, TYPE I - LINE 8", SOLID WHITE



ROADWAY LEGEND

HOT-MIX ASPHALT SURFACE REMOVAL - BUTT JOINT

NOTES:

- LIMIT OF RESURFACING ON THE SIDE-STREETS THROUGHOUT THE PROJECT SHALL BE TO THE RADIUS RETURN, UNLESS OTHERWISE SHOWN ON THE PLANS, OR AS DIRECTED BY THE RESIDENT ENGINEER / TECHNICIAN.
- ALL FINAL PAVEMENT MARKINGS SHALL BE THERMOPLASTIC PAVEMENT MARKINGS (OF THE EXTRUDED TYPE).
- ALL FINAL PAVEMENT MARKINGS SHALL BE PLACED IN ACCORDANCE WITH TC-13 "DISTRICT ONE TYPICAL PAVEMENT MARKINGS" STANDARD DETAIL.
- ALL RAISED REFLECTIVE PAVEMENT MARKERS SHALL BE PLACED IN ACCORDANCE WITH TC-11 "TYPICAL APPLICATIONS RAISED REFLECTIVE PAVEMENT MARKERS (SNOW-PLOW RESISTANT)" STANDARD DETAIL.

MODEL: Desktop
 FILE NAME: \\s:\1\8\48\RD\RTS\Illinois\gpr\RD\DOT\Documents\18DOT_Civil\818\Design\18DOT_111111\18DOT_111111\18DOT_111111\18DOT_111111.dwg
 PLOT DATE: 4/13/2018

USER NAME = Vleickovvv	DESIGNED -	REVISED - 4/13/18
PLOT SCALE = 100.0000' / in.	DRAWN -	REVISED -
PLOT DATE = 4/13/2018	CHECKED -	REVISED -
	DATE -	REVISED -

STATE OF ILLINOIS
DEPARTMENT OF TRANSPORTATION

US 34 (E. OF IL 83 (KINGERY HWY) TO W. OF I-294 (TRI-STATE TOLLWAY))
ROADWAY AND PAVEMENT MARKING PLAN

SCALE: 1" = 50' SHEET OF SHEETS STA. TO STA.

P.A.P. RTE. 311	SECTION 9Y-RS-7	COUNTY DUPAGE/COOK	TOTAL SHEETS 35	SHEET NO. 15
CONTRACT NO. 62F56				
ILLINOIS FED. AID PROJECT				

REV 4-16-18

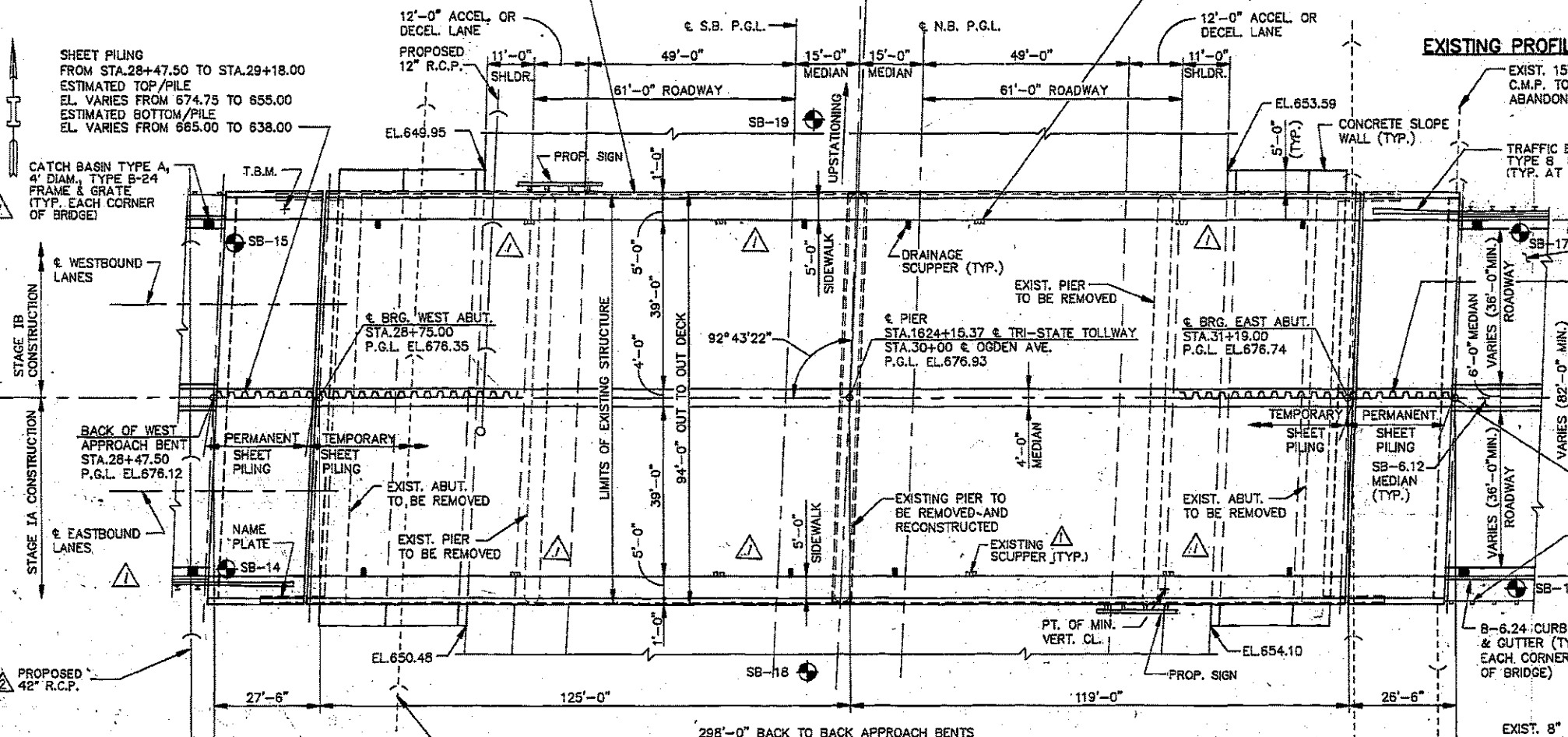
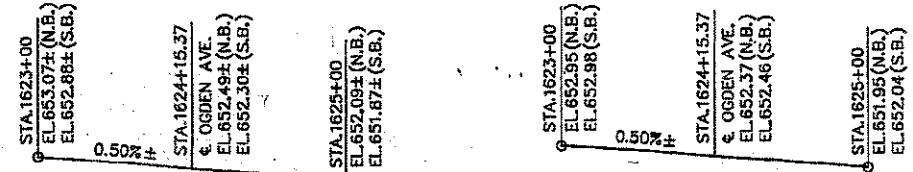
T.B.M. CHISELED "X" IN SIDEWALK N.W. CORNER OF BRIDGE (SEE PLAN FOR LOCATION)

EXISTING STRUCTURE: STA.30+00.00, OGDEN AVENUE OVER TRI-STATE TOLLWAY, STRUCTURE NO. 016-0223, BUILT IN 1958. THE EXISTING BRIDGE IS 94.00' WIDE AND 236.75' LONG. SUPERSTRUCTURE REINFORCED CONCRETE ON PRECAST PRESTRESSED CONCRETE I-BEAMS, SUBSTRUCTURE PRECAST PRESTRESSED CONCRETE PIER PILES AND REINFORCED CONCRETE STUB ABUTMENTS. EXISTING BRIDGE SUPERSTRUCTURE AND SUBSTRUCTURE TO BE REMOVED AND REPLACED WITH NEW STRUCTURE. TRAFFIC TO BE MAINTAINED UTILIZING STAGE CONSTRUCTION.

NO SALVAGE

EXISTING ALUMINUM PIPE HANDRAIL TO BE REMOVED AND DELIVERED TO THE TOLLWAY AUTHORITY MAINTENANCE YARD M-1 (TYP. EACH SIDE)

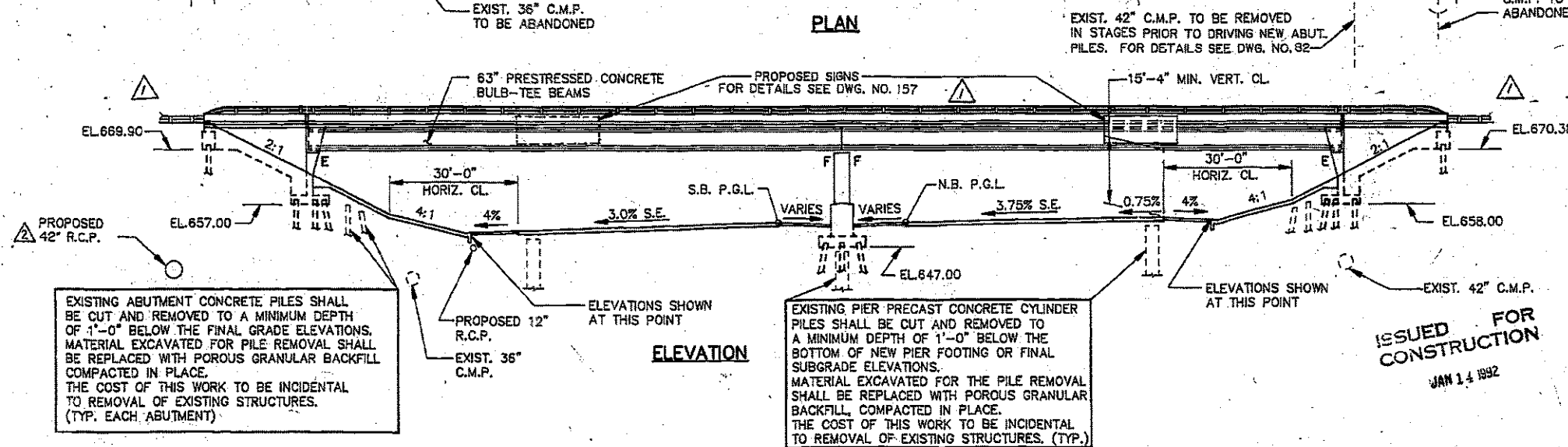
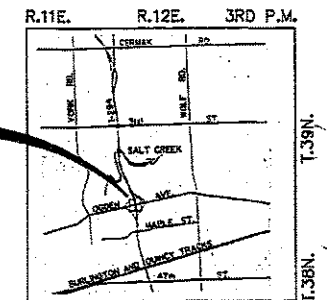
EXISTING SCUPPER GRATES TO BE REMOVED AND DELIVERED TO THE TOLLWAY AUTHORITY MAINTENANCE YARD M-1. THE COST OF THIS WORK TO BE INCIDENTAL TO REMOVAL OF EXISTING STRUCTURES (TYP.)



HORIZ. CURVE DATA
 TRI-STATE TOLLWAY
 A=22°-44'-12"
 B=1°-30'-00"
 R=3,819.70'
 L=1,515.76'
 T=767.99'
 P.C. STA. 1619+08.88
 P.T. STA. 1634+24.65
 P.I. STA. 1626+76.67

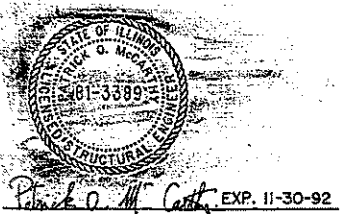
FOR INFORMATION ONLY

LEGEND
 E EXPANSION BEARING
 F FIXED BEARING
 N.B. NORTHBOUND
 S.B. SOUTHBOUND
 [Symbol] INDICATES EXISTING STRUCTURE
 [Symbol] INDICATES SOIL BORING LOCATION



EXISTING ABUTMENT CONCRETE PILES SHALL BE CUT AND REMOVED TO A MINIMUM DEPTH OF 1'-0" BELOW THE FINAL GRADE ELEVATIONS. MATERIAL EXCAVATED FOR PILE REMOVAL SHALL BE REPLACED WITH POROUS GRANULAR BACKFILL COMPACTED IN PLACE. THE COST OF THIS WORK TO BE INCIDENTAL TO REMOVAL OF EXISTING STRUCTURES. (TYP. EACH ABUTMENT)

EXISTING PIER PRECAST CONCRETE CYLINDER PILES SHALL BE CUT AND REMOVED TO A MINIMUM DEPTH OF 1'-0" BELOW THE BOTTOM OF NEW PIER FOOTING OR FINAL SUBGRADE ELEVATIONS. MATERIAL EXCAVATED FOR THE PILE REMOVAL SHALL BE REPLACED WITH POROUS GRANULAR BACKFILL, COMPACTED IN PLACE. THE COST OF THIS WORK TO BE INCIDENTAL TO REMOVAL OF EXISTING STRUCTURES. (TYP.)

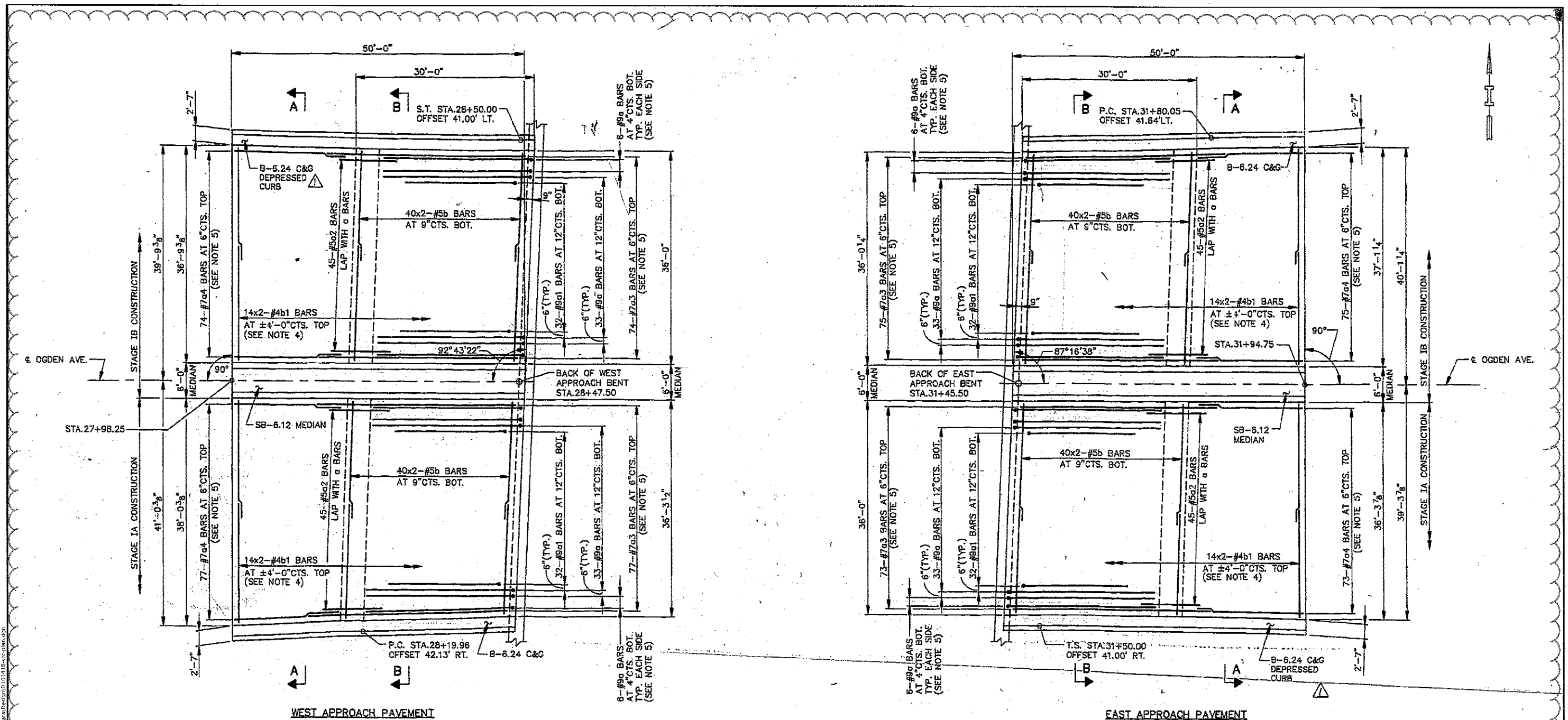


STA. 30+00.00 BUILT 199_ BY STATE OF ILLINOIS F.A.U. RT.1480 SEC.T-5-16-1(89) LOADING HS20 STR. NO. 016-0223 **NAME PLATE** REFER TO STD. 2113

ISSUED FOR CONSTRUCTION
 JAN 14 1992

DRAWN GJS		DATE 10/1/91		H.W. LOCHNER, INC. CONSULTING ENGINEERS CHICAGO - WASHINGTON - BOSTON - FLORIDA		THE ILLINOIS STATE TOLL HIGHWAY AUTHORITY EAST-WEST TOLLWAY AND MIDWEST ROAD OAK BROOK, ILLINOIS 60521		<table border="1"> <tr><th colspan="2">REVISIONS</th></tr> <tr><th>NO.</th><th>DATE</th></tr> <tr><td>1</td><td>11-25-91</td></tr> <tr><td>2</td><td>12-10-91</td></tr> <tr><td>3</td><td>12-07-93</td></tr> </table>		REVISIONS		NO.	DATE	1	11-25-91	2	12-10-91	3	12-07-93	CONTRACT CIP-661		DRAWING NO. 000 OF 449	
REVISIONS																							
NO.	DATE																						
1	11-25-91																						
2	12-10-91																						
3	12-07-93																						
CHECKED RWC		SCALE N.T.S.		STATE OF ILLINOIS DEPARTMENT OF TRANSPORTATION		US 34 (E. OF IL 83 (KINGERY HWY) TO W. OF I-294 (TRI-STATE TOLLWAY) BRIDGE PLAN (FOR INFORMATION ONLY)		GENERAL PLAN AND ELEVATION OGDEN AVE. OVER TRI-STATE TOLLWAY		DRAWING NO. 000 OF 449													
PLOT SCALE = 100.0000" / 1"		PLOT DATE = 4/13/2018		DESIGNED		REVISED		SHEET 311		SECTION 9Y-R5-7													
				DRAWN		REVISED		COUNTY		SHEET NO.													
				CHECKED		REVISED		DUPAGE/COOK		54 15A													
				DATE		REVISED		CONTRACT NO. 62F56															
								ILLINOIS FED. AID PROJECT															

△ SHEET ADDED 4-16-18



PLAN

FOR INFORMATION ONLY

ISSUED FOR CONSTRUCTION
JAN 14 1992

- NOTES**
1. FOR SECTIONS AND DETAILS SEE SHEET S31
 2. FOR BAR LIST AND BILL OF MATERIALS SEE SHEET S31
 3. FOR CURVE AND SPIRAL DATA SEE ROADWAY PLANS.
 4. FAN BARS ALONG SKEW AT BRIDGE END OF APPROACH PAVEMENT.
 5. FAN BARS ALONG OUTSIDE CURB TO FIT CURVE.

DRAWN... GS		DATE... 10/31/91		H.W. LOCHNER, INC. CONSULTING ENGINEERS CHICAGO - WASHINGTON - BOSTON - FLORIDA		THE ILLINOIS STATE TOLL HIGHWAY AUTHORITY EAST-WEST TOLLWAY AND MIDWEST ROAD OAK BROOK, ILLINOIS 60521		<table border="1"> <thead> <tr> <th colspan="3">REVISIONS</th> </tr> <tr> <th>NO.</th> <th>DATE</th> <th>DESCRIPTION</th> </tr> </thead> <tbody> <tr> <td>1</td> <td>11-25-91</td> <td>ADDENDUM NO. 2</td> </tr> <tr> <td>2</td> <td>12-07-93</td> <td>RECORD DRAWING</td> </tr> </tbody> </table>		REVISIONS			NO.	DATE	DESCRIPTION	1	11-25-91	ADDENDUM NO. 2	2	12-07-93	RECORD DRAWING	CONTRACT CIP-661		DRAWING NO.	
REVISIONS																									
NO.	DATE	DESCRIPTION																							
1	11-25-91	ADDENDUM NO. 2																							
2	12-07-93	RECORD DRAWING																							
CHECKED... RWC		SCALE... N.T.S.		STATE OF ILLINOIS DEPARTMENT OF TRANSPORTATION		US 34 (E. OF IL 83 (KINGERY HWY) TO W. OF I-294 (TRI-STATE TOLLWAY)) BRIDGE PLAN (FOR INFORMATION ONLY)		APPROACH PAVEMENT PLAN OGDEN AVE. OVER TRI-STATE TOLLWAY		209 OF 499															
PLOT SCALE = 1/8" = 1'-0"		PLOT DATE = 4/13/2018		DESIGNED		DRAWN		SECTION		COUNTY															
				CHECKED		DATE		311		99-RS-7															
								SHEET		TOTAL SHEETS															
								OF		54															
								STA.		CONTRACT NO. 62F56															
								TO STA.		ILLINOIS FED. AID PROJECT															

SHEET S30 OF S35

▲ SHEET ADDED 4-16-18

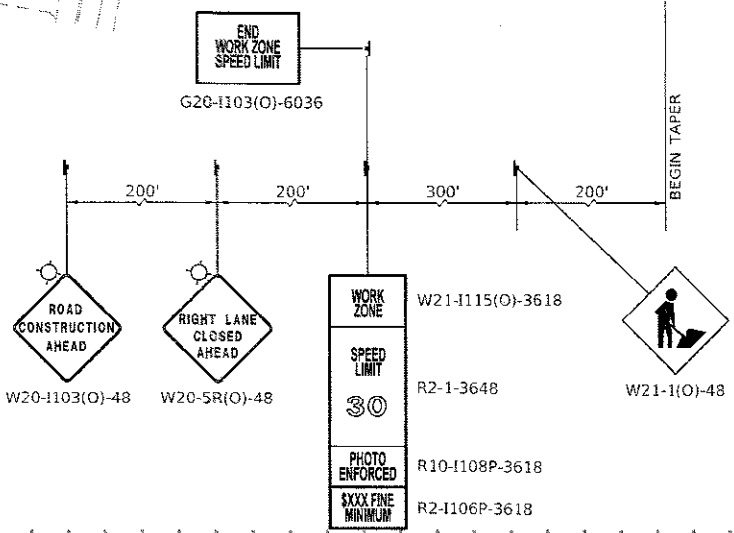
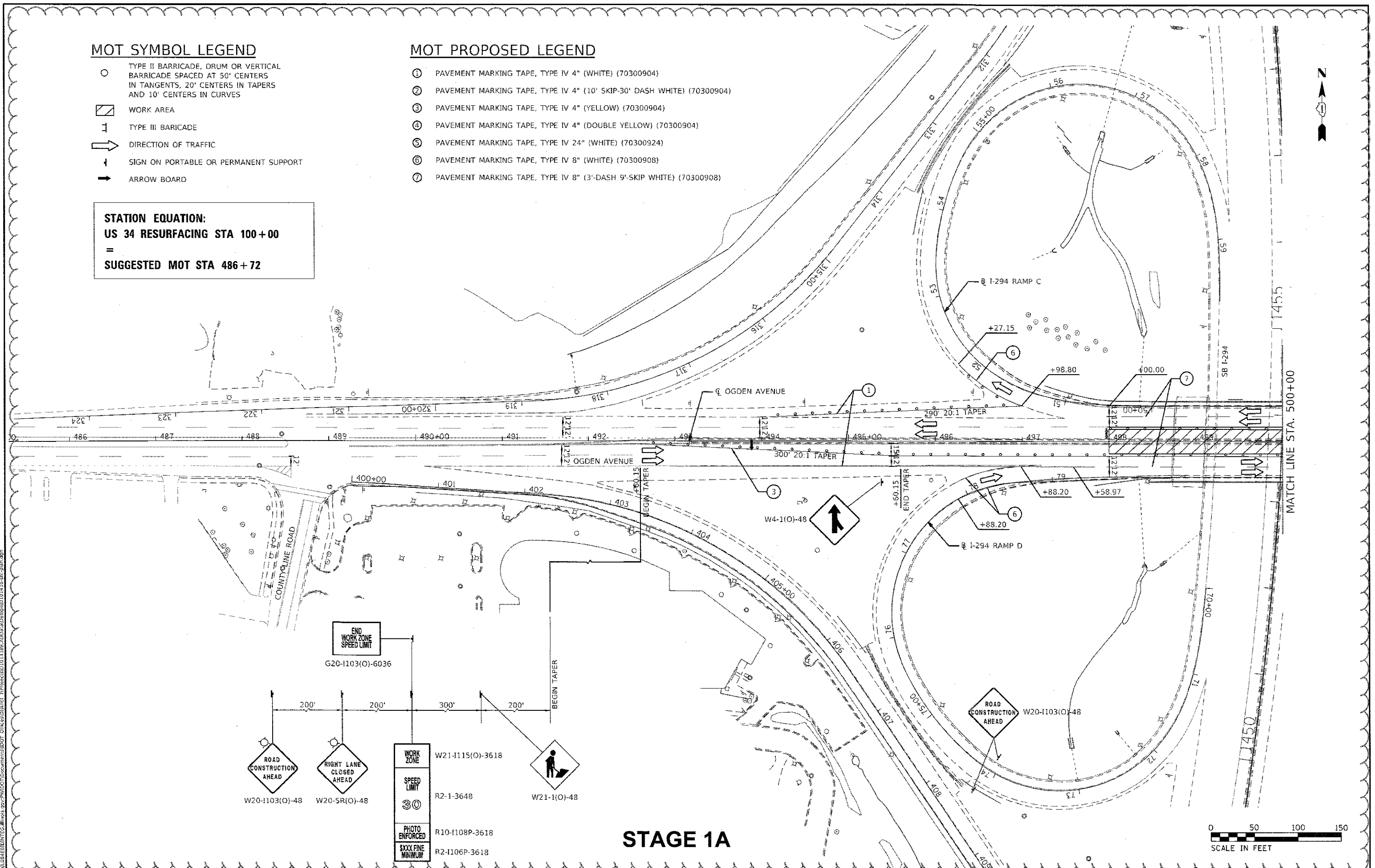
MOT SYMBOL LEGEND

- TYPE II BARRICADE, DRUM OR VERTICAL BARRICADE SPACED AT 50' CENTERS IN TANGENTS, 20' CENTERS IN TAPERS AND 10' CENTERS IN CURVES
- ▨ WORK AREA
- ⊥ TYPE III BARRICADE
- ➔ DIRECTION OF TRAFFIC
- ⊥ SIGN ON PORTABLE OR PERMANENT SUPPORT
- ➔ ARROW BOARD

STATION EQUATION:
US 34 RESURFACING STA 100+00
=
SUGGESTED MOT STA 486+72

MOT PROPOSED LEGEND

- ① PAVEMENT MARKING TAPE, TYPE IV 4" (WHITE) (70300904)
- ② PAVEMENT MARKING TAPE, TYPE IV 4" (10' SKIP-30' DASH WHITE) (70300904)
- ③ PAVEMENT MARKING TAPE, TYPE IV 4" (YELLOW) (70300904)
- ④ PAVEMENT MARKING TAPE, TYPE IV 4" (DOUBLE YELLOW) (70300904)
- ⑤ PAVEMENT MARKING TAPE, TYPE IV 24" (WHITE) (70300924)
- ⑥ PAVEMENT MARKING TAPE, TYPE IV 8" (WHITE) (70300908)
- ⑦ PAVEMENT MARKING TAPE, TYPE IV 8" (3'-DASH 9'-SKIP WHITE) (70300908)



STAGE 1A

USER NAME = Velichkovv	DESIGNED -	REVISED -
PLOT SCALE = 100,0000' / in.	DRAWN -	REVISED -
PLOT DATE = 4/13/2018	CHECKED -	REVISED -
	DATE -	REVISED -

**STATE OF ILLINOIS
 DEPARTMENT OF TRANSPORTATION**

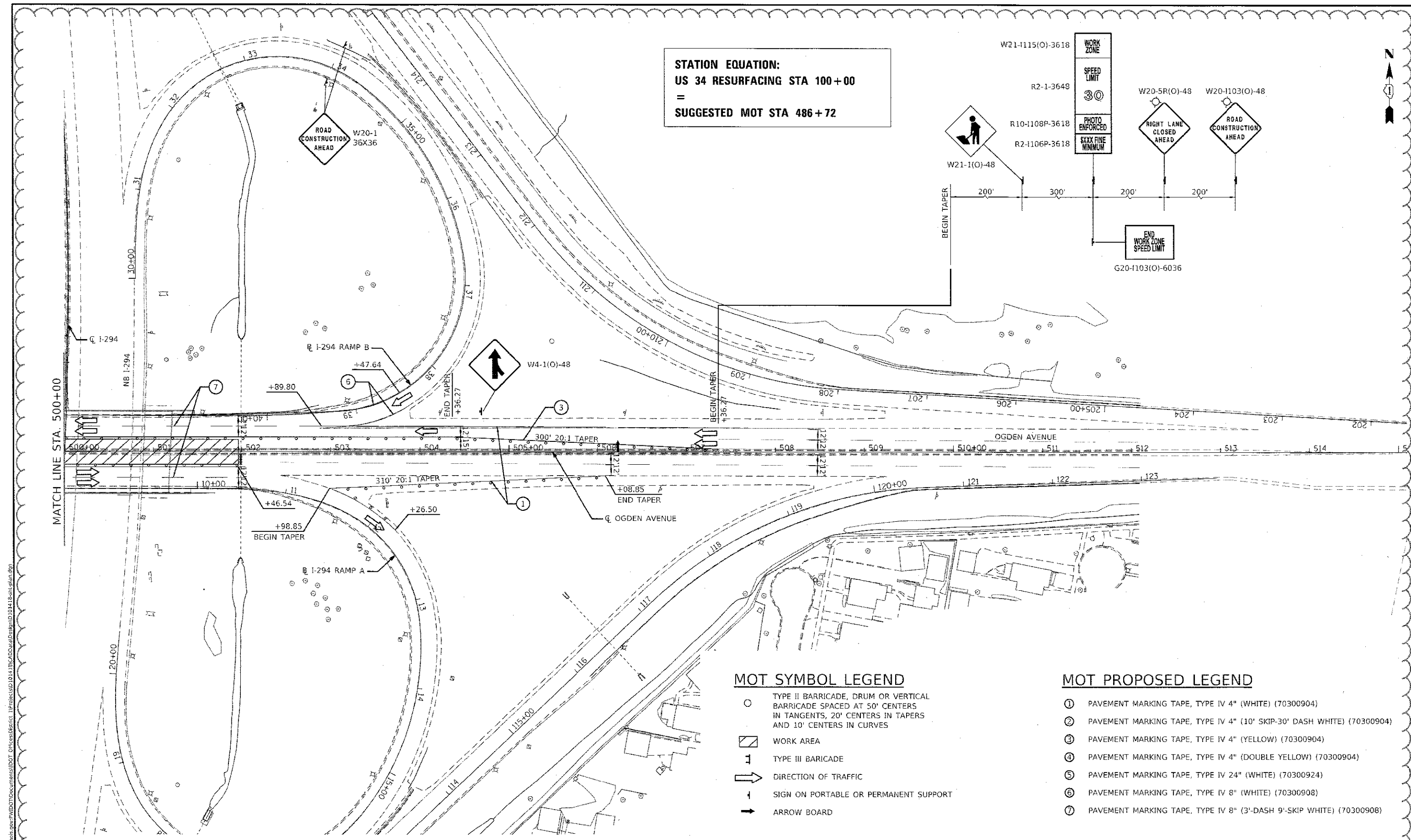
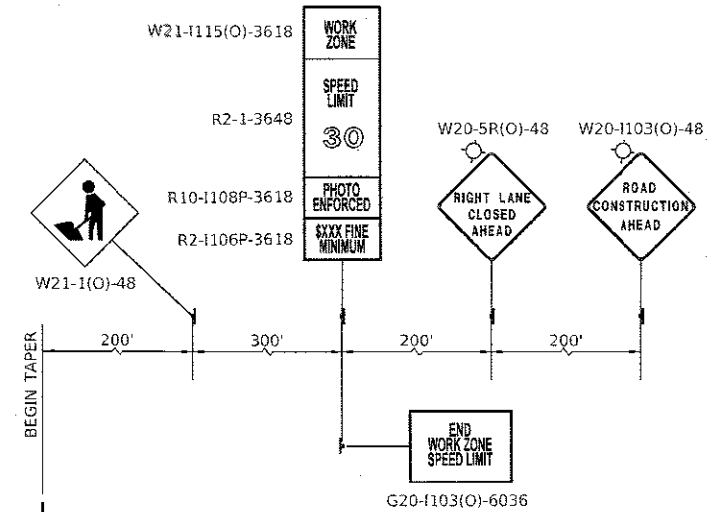
US 34 (E. OF IL 83 (KINGERY HWY) TO W. OF I-294 (TRI-STATE TOLLWAY))	
SUGGESTED MAINTENANCE OF TRAFFIC	
SCALE: 1" = 50'	SHEET OF SHEETS STA. TO STA.

F.A.P. RTE. 311	SECTION 9Y-R5-7	COUNTY DUPAGE/COOK	TOTAL SHEETS 54	SHEET NO. 15E
CONTRACT NO. 62F56				
ILLINOIS FED. AID PROJECT				

△ SHEET ADDED 4-16-18

MODEL: D:\PLOT\...
 FILE NAME: ...

STATION EQUATION:
US 34 RESURFACING STA 100+00
=
SUGGESTED MOT STA 486+72



MOT SYMBOL LEGEND

- TYPE II BARRICADE, DRUM OR VERTICAL BARRICADE SPACED AT 50' CENTERS IN TANGENTS, 20' CENTERS IN TAPERS AND 10' CENTERS IN CURVES
- ▨ WORK AREA
- ⊥ TYPE III BARRICADE
- ➔ DIRECTION OF TRAFFIC
- ↑ SIGN ON PORTABLE OR PERMANENT SUPPORT
- ➔ ARROW BOARD

MOT PROPOSED LEGEND

- ① PAVEMENT MARKING TAPE, TYPE IV 4" (WHITE) (70300904)
- ② PAVEMENT MARKING TAPE, TYPE IV 4" (10' SKIP-30' DASH WHITE) (70300904)
- ③ PAVEMENT MARKING TAPE, TYPE IV 4" (YELLOW) (70300904)
- ④ PAVEMENT MARKING TAPE, TYPE IV 4" (DOUBLE YELLOW) (70300904)
- ⑤ PAVEMENT MARKING TAPE, TYPE IV 24" (WHITE) (70300924)
- ⑥ PAVEMENT MARKING TAPE, TYPE IV 8" (WHITE) (70300908)
- ⑦ PAVEMENT MARKING TAPE, TYPE IV 8" (3'-DASH 9'-SKIP WHITE) (70300908)

STAGE 1A



MODEL: Default
 FILE: I:\US34\83\INTG\Illinois\pwr\DOT\Documents\DOT_Offices\Bartol\Project\SD\01418\CA\DD\al\Design\01418\st1a-plan.dwg

USER NAME = velichkovv	DESIGNED -	REVISED -
	DRAWN -	REVISED -
PLOT SCALE = 100.0000' / in.	CHECKED -	REVISED -
PLOT DATE = 4/13/2018	DATE -	REVISED -

**STATE OF ILLINOIS
 DEPARTMENT OF TRANSPORTATION**

**US 34 (E. OF IL 83 (KINGERY HWY) TO W. OF I-294 (TRI-STATE TOLLWAY))
 SUGGESTED MAINTENANCE OF TRAFFIC**

SCALE: 1" = 50' SHEET OF SHEETS STA. TO STA.

F.A.P. RTE. 311	SECTION 9Y-R5-7	COUNTY DUPAGE/COOK	TOTAL SHEETS 54	SHEET NO. 15F
ILLINOIS FED. AID PROJECT				CONTRACT NO. 62F56

▲ SHEET ADDED 4-16-18

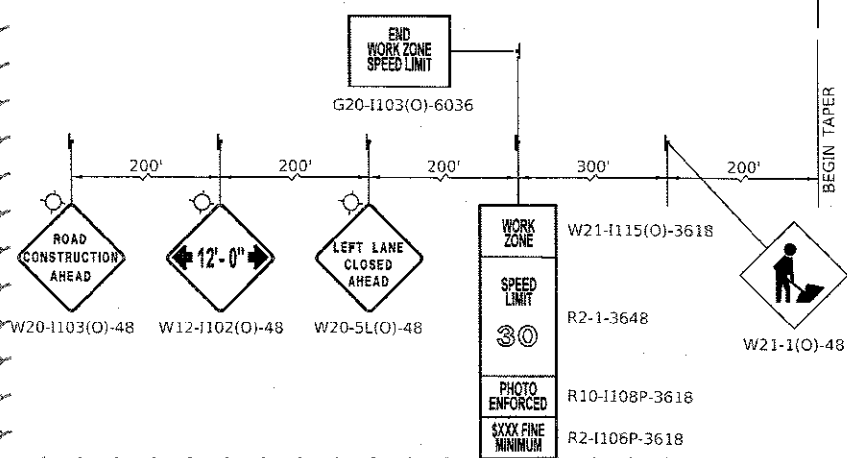
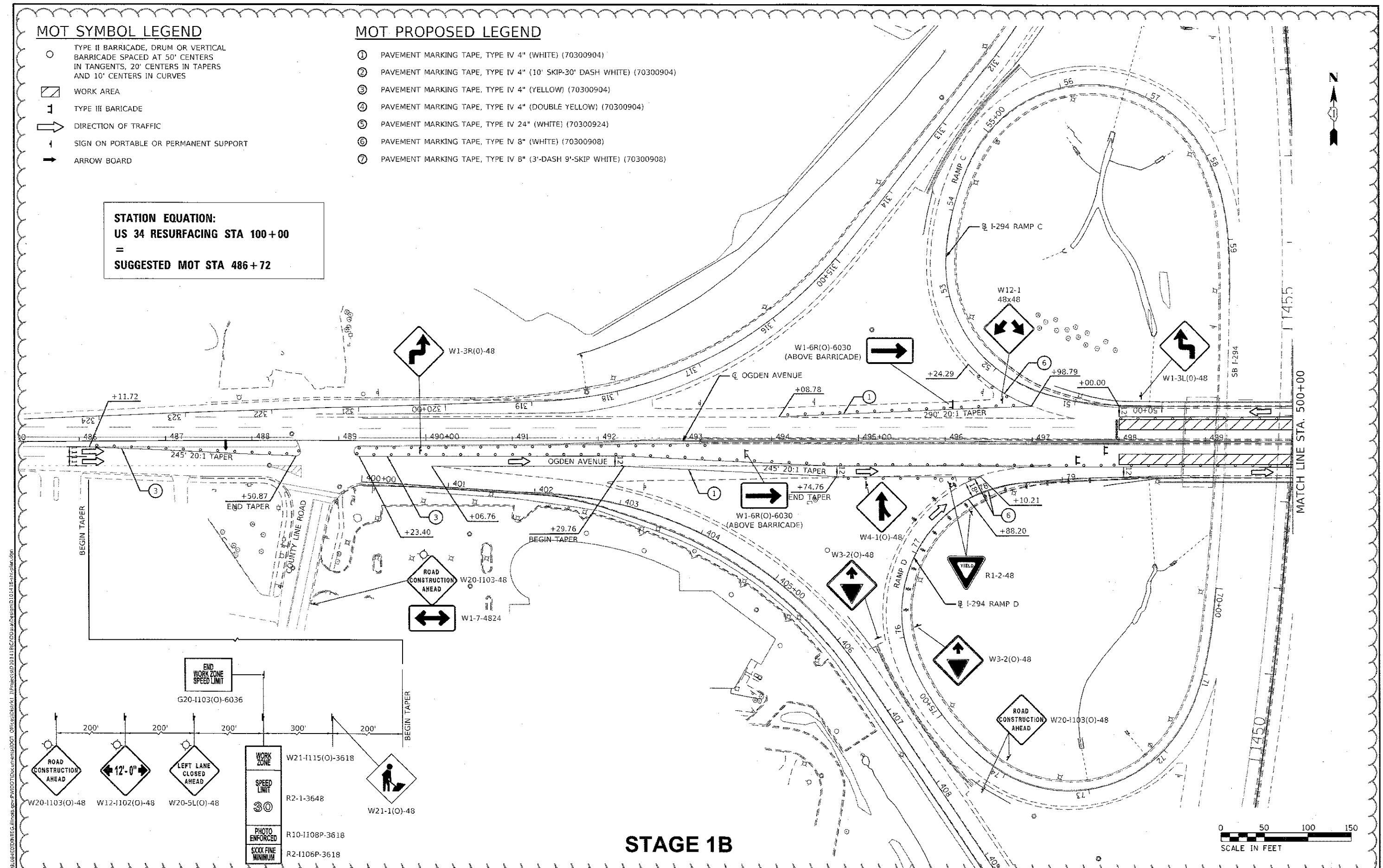
MOT SYMBOL LEGEND

- TYPE II BARRICADE, DRUM OR VERTICAL BARRICADE SPACED AT 50' CENTERS IN TANGENTS, 20' CENTERS IN TAPERS AND 10' CENTERS IN CURVES
- ▨ WORK AREA
- ⊥ TYPE III BARRICADE
- ➔ DIRECTION OF TRAFFIC
- ⊥ SIGN ON PORTABLE OR PERMANENT SUPPORT
- ➔ ARROW BOARD

MOT PROPOSED LEGEND

- ① PAVEMENT MARKING TAPE, TYPE IV 4" (WHITE) (70300904)
- ② PAVEMENT MARKING TAPE, TYPE IV 4" (10' SKIP-30' DASH WHITE) (70300904)
- ③ PAVEMENT MARKING TAPE, TYPE IV 4" (YELLOW) (70300904)
- ④ PAVEMENT MARKING TAPE, TYPE IV 4" (DOUBLE YELLOW) (70300904)
- ⑤ PAVEMENT MARKING TAPE, TYPE IV 24" (WHITE) (70300924)
- ⑥ PAVEMENT MARKING TAPE, TYPE IV 8" (WHITE) (70300908)
- ⑦ PAVEMENT MARKING TAPE, TYPE IV 8" (3'-DASH 9'-SKIP WHITE) (70300908)

STATION EQUATION:
US 34 RESURFACING STA 100+00
=
SUGGESTED MOT STA 486+72



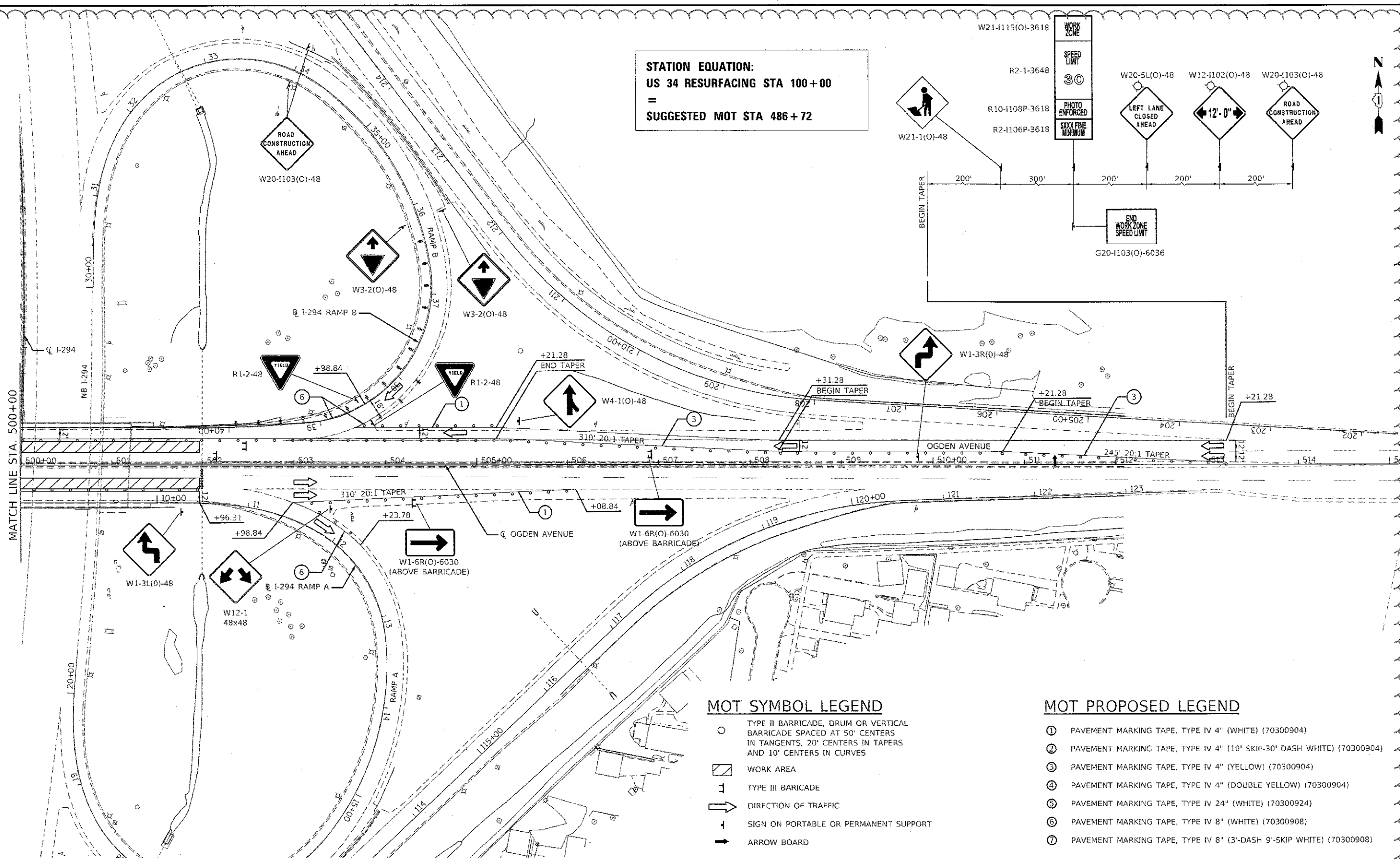
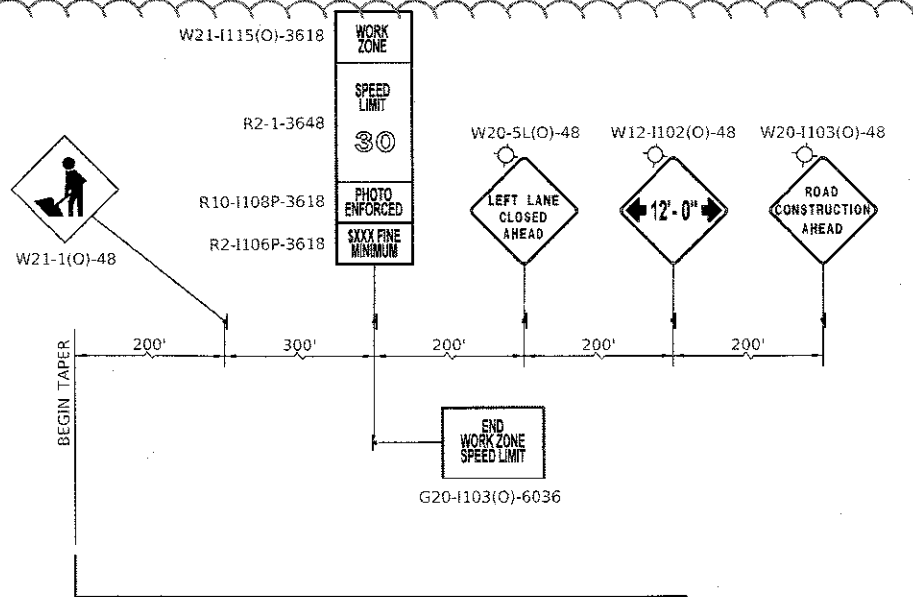
STAGE 1B



USER NAME = Velichkovv DESIGNED - DRAWN - CHECKED - PLOT SCALE = 100.0000' / in. PLOT DATE = 4/13/2018	DESIGNED - REVISIONS - CHECKED - DATE -	REVISIONS - REVISIONS - REVISIONS - REVISIONS -	STATE OF ILLINOIS DEPARTMENT OF TRANSPORTATION	US 34 (E. OF IL 83 (KINGERY HWY) TO W. OF I-294 (TRI-STATE TOLLWAY)) SUGGESTED MAINTENANCE OF TRAFFIC	F.A.P. RTE. 311 SECTION 9Y-RS-7 COUNTY DUPAGE/COOK TOTAL SHEETS 54 SHEET NO. 15G CONTRACT NO. 62F56
---	--	--	---	--	--

▲ SHEET ADDED 4-16-18

STATION EQUATION:
US 34 RESURFACING STA 100+00
 =
SUGGESTED MOT STA 486+72



MOT SYMBOL LEGEND

- TYPE II BARRICADE, DRUM OR VERTICAL BARRICADE SPACED AT 50' CENTERS IN TANGENTS, 20' CENTERS IN TAPERS AND 10' CENTERS IN CURVES
- ▨ WORK AREA
- ⊥ TYPE III BARRICADE
- ➔ DIRECTION OF TRAFFIC
- ↑ SIGN ON PORTABLE OR PERMANENT SUPPORT
- ➔ ARROW BOARD

MOT PROPOSED LEGEND

- ① PAVEMENT MARKING TAPE, TYPE IV 4" (WHITE) (70300904)
- ② PAVEMENT MARKING TAPE, TYPE IV 4" (10' SKIP-30' DASH WHITE) (70300904)
- ③ PAVEMENT MARKING TAPE, TYPE IV 4" (YELLOW) (70300904)
- ④ PAVEMENT MARKING TAPE, TYPE IV 4" (DOUBLE YELLOW) (70300904)
- ⑤ PAVEMENT MARKING TAPE, TYPE IV 24" (WHITE) (70300924)
- ⑥ PAVEMENT MARKING TAPE, TYPE IV 8" (WHITE) (70300908)
- ⑦ PAVEMENT MARKING TAPE, TYPE IV 8" (3-DASH 9'-SKIP WHITE) (70300908)

STAGE 1B



MODEL: Default	USER NAME = Velichkovvv	DESIGNED -	REVISED -	STATE OF ILLINOIS DEPARTMENT OF TRANSPORTATION	US 34 (E. OF IL 83 (KINGERY HWY) TO W. OF I-294 (TRI-STATE TOLLWAY)) SUGGESTED MAINTENANCE OF TRAFFIC	F.A.P. RTE.	SECTION	COUNTY	TOTAL SHEETS	SHEET NO.	
FILE NAME: \\p10001\share\mtd\projects\2014\11\18\48672\118-241-118-241.dwg	PLOT SCALE = 100.0000' / in.	DRAWN -	REVISED -			311	9Y-R5-7	DUPAGE/COOK	54	15H	
	PLOT DATE = 4/13/2018	CHECKED -	REVISED -			SCALE: 1" = 50'	SHEET OF SHEETS	STA. TO STA.	ILLINOIS FED. AID PROJECT		
		DATE -	REVISED -			CONTRACT NO. 62F56					

▲ SHEET ADDED 4-16-18

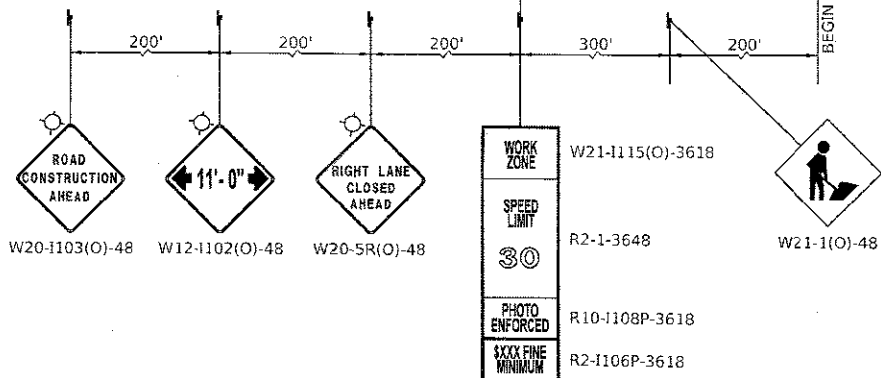
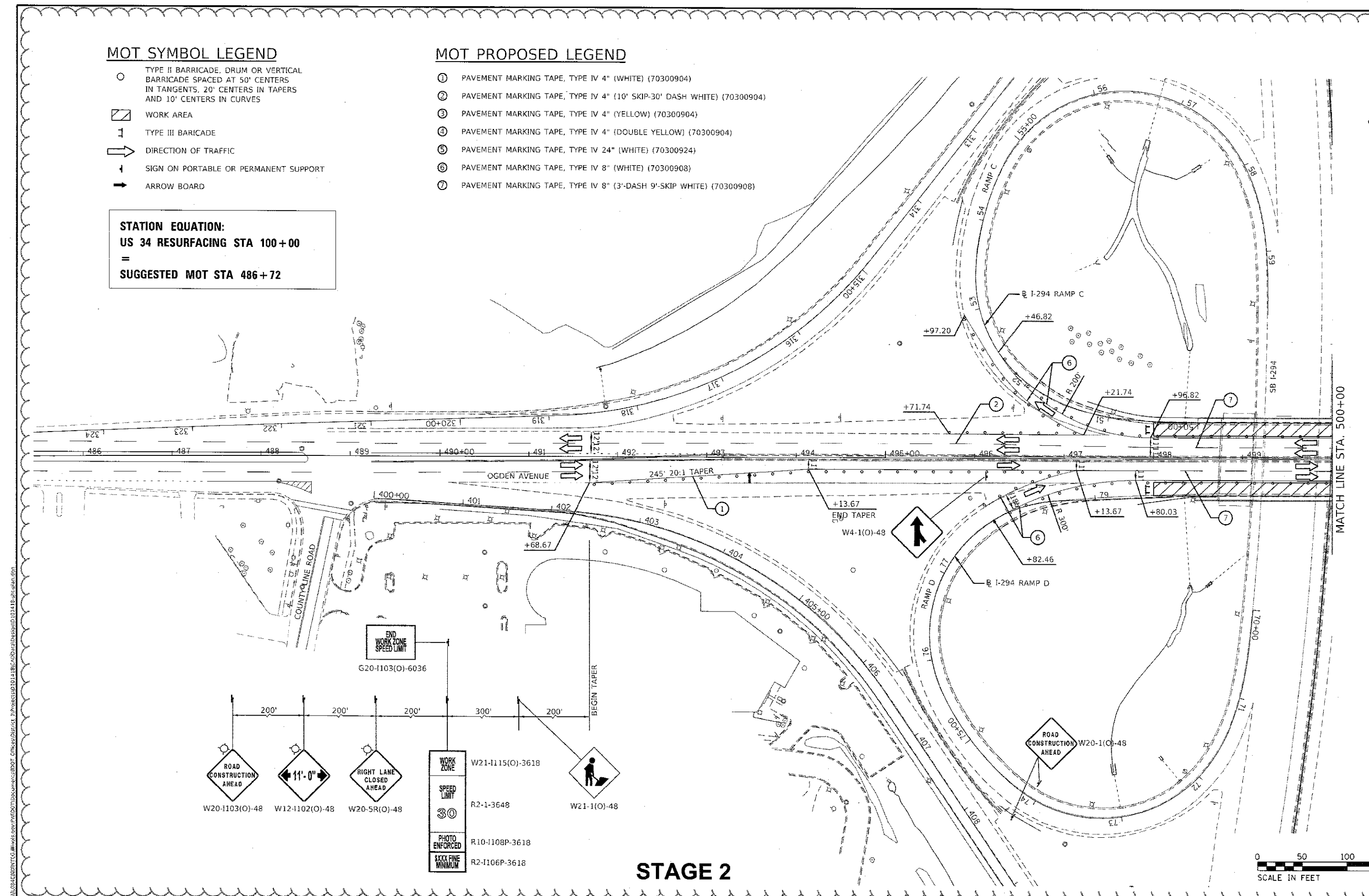
MOT SYMBOL LEGEND

- TYPE II BARRICADE, DRUM OR VERTICAL BARRICADE SPACED AT 50' CENTERS IN TANGENTS, 20' CENTERS IN TAPERS AND 10' CENTERS IN CURVES
- ▨ WORK AREA
- ⊥ TYPE III BARRICADE
- ➔ DIRECTION OF TRAFFIC
- ⊥ SIGN ON PORTABLE OR PERMANENT SUPPORT
- ➔ ARROW BOARD

STATION EQUATION:
US 34 RESURFACING STA 100+00
=
SUGGESTED MOT STA 486+72

MOT PROPOSED LEGEND

- ① PAVEMENT MARKING TAPE, TYPE IV 4" (WHITE) (70300904)
- ② PAVEMENT MARKING TAPE, TYPE IV 4" (10' SKIP-30' DASH WHITE) (70300904)
- ③ PAVEMENT MARKING TAPE, TYPE IV 4" (YELLOW) (70300904)
- ④ PAVEMENT MARKING TAPE, TYPE IV 4" (DOUBLE YELLOW) (70300904)
- ⑤ PAVEMENT MARKING TAPE, TYPE IV 24" (WHITE) (70300924)
- ⑥ PAVEMENT MARKING TAPE, TYPE IV 8" (WHITE) (70300908)
- ⑦ PAVEMENT MARKING TAPE, TYPE IV 8" (3'-DASH 9'-SKIP WHITE) (70300908)

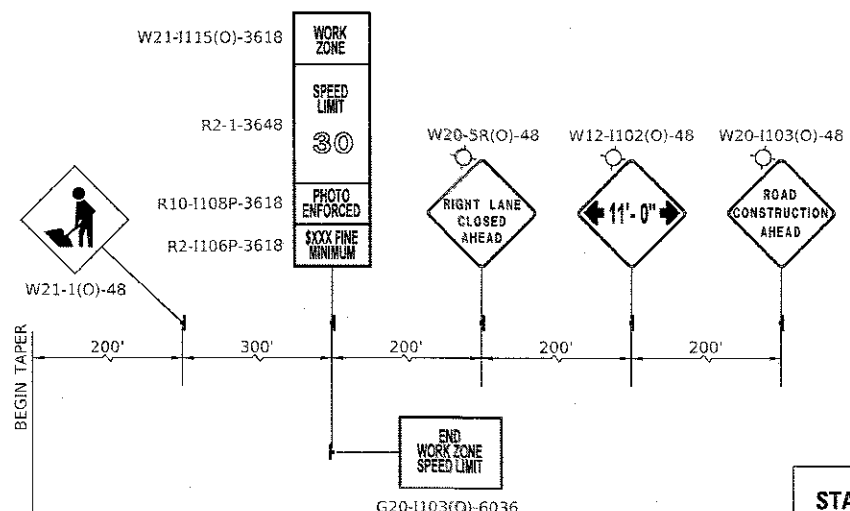
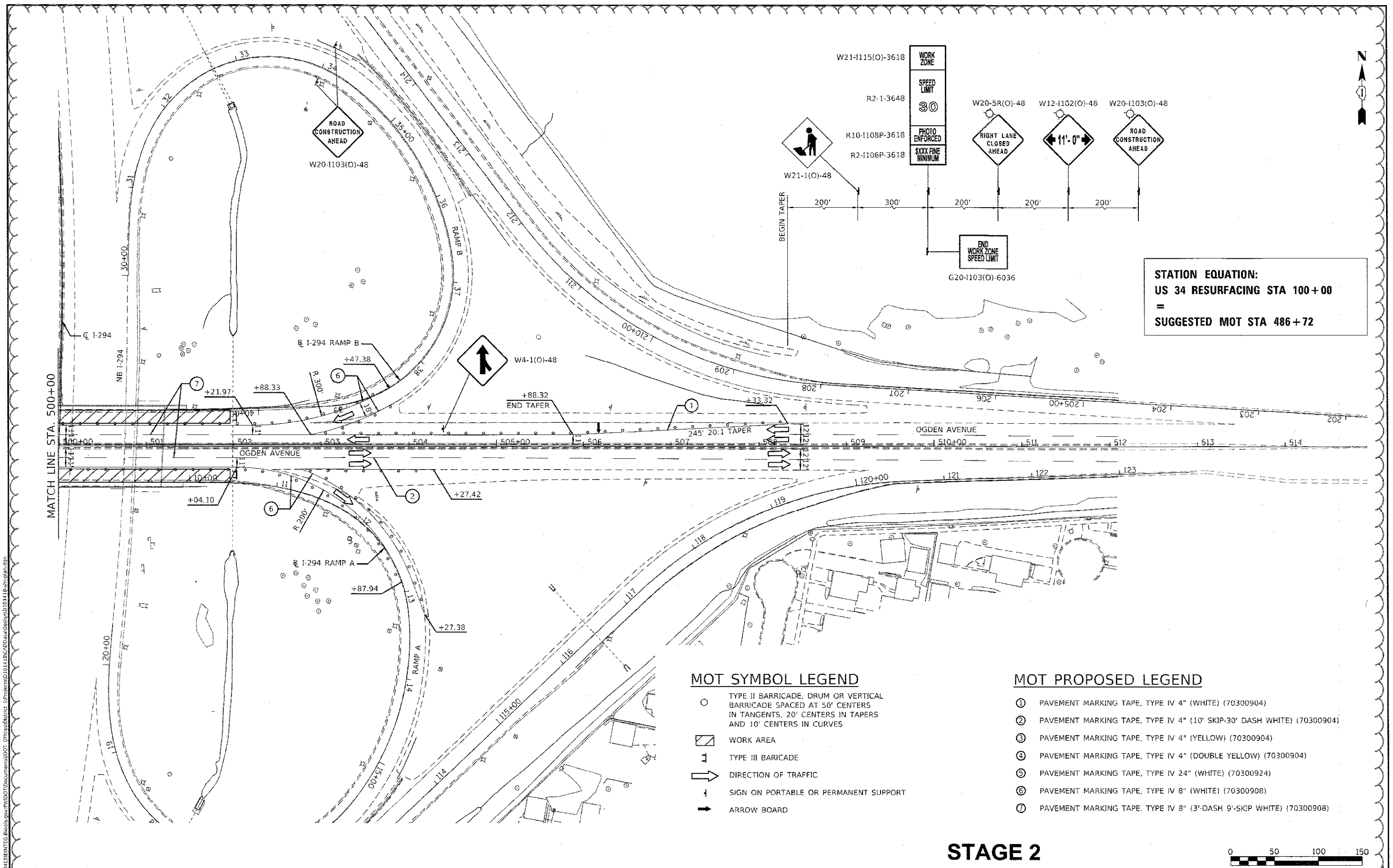


STAGE 2



MODEL: Detail FILE: WARE_001\081405101\PROJECT\DWG\01118\01118.dwg PLOT DATE: 4/13/2018	USER NAME = Velichkovv DESIGNED - DRAWN - CHECKED - DATE -	REVISED - REVISED - REVISED - REVISED -	STATE OF ILLINOIS DEPARTMENT OF TRANSPORTATION	US 34 (E. OF IL 83 (KINGERY HWY) TO W. OF I-294 (TRI-STATE TOLLWAY)) SUGGESTED MAINTENANCE OF TRAFFIC	F.A.P. RTE. 311 SECTION 97-R5-7 COUNTY DUPAGE/COOK TOTAL SHEETS 54 SHEET NO. 151
	SCALE: 1"= 50' SHEET OF SHEETS STA. TO STA.	ILLINOIS FED. AID PROJECT CONTRACT NO. 62F56			

▲ SHEET ADDED 4-16-18



STATION EQUATION:
US 34 RESURFACING STA 100+00
=
SUGGESTED MOT STA 486+72

MOT SYMBOL LEGEND

- TYPE II BARRICADE, DRUM OR VERTICAL BARRICADE SPACED AT 50' CENTERS IN TANGENTS, 20' CENTERS IN TAPERS AND 10' CENTERS IN CURVES
- ▨ WORK AREA
- ⊥ TYPE III BARRICADE
- ➔ DIRECTION OF TRAFFIC
- ↑ SIGN ON PORTABLE OR PERMANENT SUPPORT
- ➔ ARROW BOARD

MOT PROPOSED LEGEND

- ① PAVEMENT MARKING TAPE, TYPE IV 4" (WHITE) (70300904)
- ② PAVEMENT MARKING TAPE, TYPE IV 4" (10' SKIP-30' DASH WHITE) (70300904)
- ③ PAVEMENT MARKING TAPE, TYPE IV 4" (YELLOW) (70300904)
- ④ PAVEMENT MARKING TAPE, TYPE IV 4" (DOUBLE YELLOW) (70300904)
- ⑤ PAVEMENT MARKING TAPE, TYPE IV 24" (WHITE) (70300924)
- ⑥ PAVEMENT MARKING TAPE, TYPE IV 8" (WHITE) (70300908)
- ⑦ PAVEMENT MARKING TAPE, TYPE IV 8" (3'-DASH 9'-SKIP WHITE) (70300908)

STAGE 2



MODEL: Default
 FILE NAME: D:\AL0848\ENR\INTG\Illinois\gov\FWD\DOT\Documents\1007 - Office\Bjardr - 1\Projects\101118\CD\Drawings\101118-118-Station.com

USER NAME = vsjckkovv	DESIGNED -	REVISED -
PLOT SCALE = 100.0000' / in.	DRAWN -	REVISED -
PLOT DATE = 4/13/2018	CHECKED -	REVISED -
	DATE -	REVISED -

STATE OF ILLINOIS
DEPARTMENT OF TRANSPORTATION

US 34 (E. OF IL 83 (KINGERY HWY) TO W. OF I-294 (TRI-STATE TOLLWAY))
SUGGESTED MAINTENANCE OF TRAFFIC

F.A.P. RTE.	SECTION	COUNTY	TOTAL SHEETS	SHEET NO.
311	9Y-RS-7	DUPAGE/COOK	54	151
CONTRACT NO. 62F56			ILLINOIS FED. AID PROJECT	

▲ SHEET ADDED 4-16-18