

04-27-2018 LETTING ITEM 035

STATE OF ILLINOIS  
DEPARTMENT OF TRANSPORTATION

F.A.I. RTE.	SECTION	COUNTY	TOTAL SHEETS	SHEET NO.
172	(1-6) CLV	ADAMS	5	1
		ILLINOIS	CONTRACT NO. 72K40	

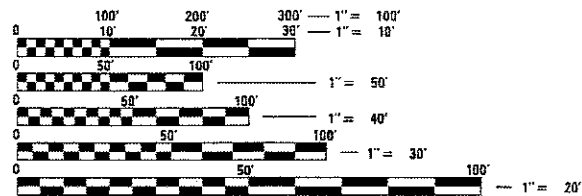
FOR INDEX OF SHEETS, SEE SHEET NO. 2

# PROPOSED IMPROVEMENTS

FAI 172 (I 172)  
(1-6) CLV  
CULVERT REPAIR

ADAMS COUNTY  
C-96-038-18

ADT = 3,850  
SU = 275  
MU = 250

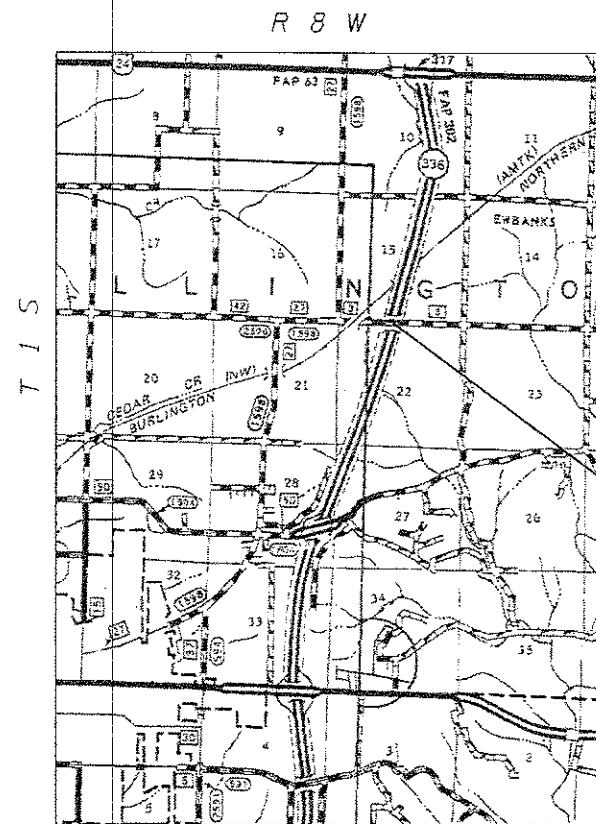


FULL SIZE PLANS HAVE BEEN PREPARED USING STANDARD ENGINEERING SCALES. REDUCED SIZED PLANS WILL NOT CONFORM TO STANDARD SCALES. IN MAKING MEASUREMENTS ON REDUCED PLANS, THE ABOVE SCALES MAY BE USED.

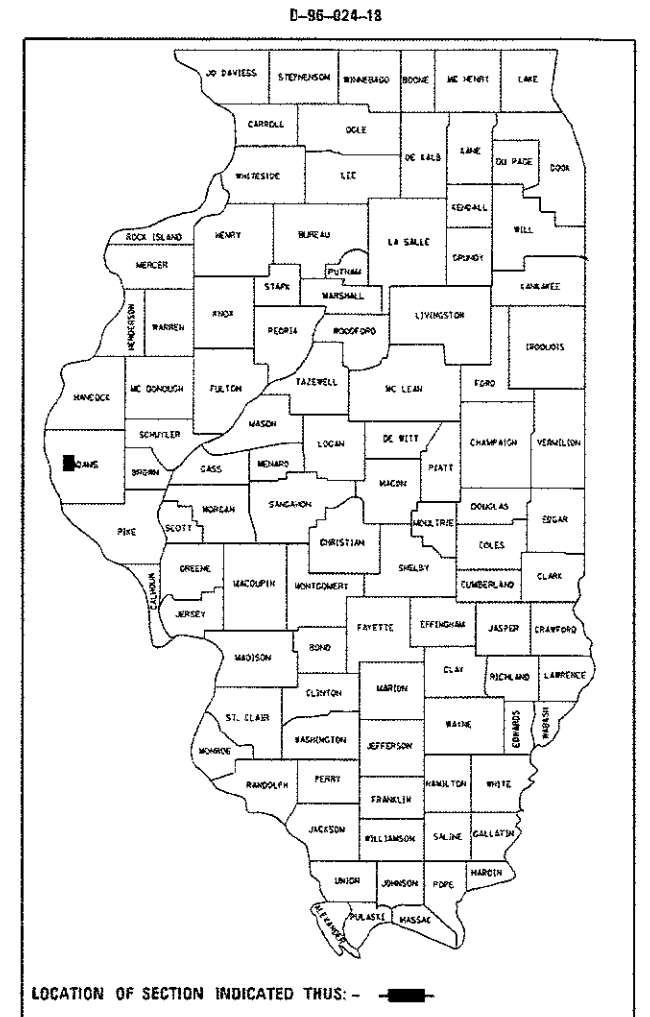
J.U.L.I.E.  
JOINT UTILITY LOCATION INFORMATION FOR EXCAVATION  
1-800-892-0123  
OR 811

PROJECT ENGINEER : MIKE IRWIN - (217)524-7765  
PROJECT MANAGER : TIM SHARP - (217)524-9160

CONTRACT NO. 72K40



PROJECT LOCATION  
STA. 139+35.12



STATE OF ILLINOIS  
DEPARTMENT OF TRANSPORTATION

SUBMITTED 26 January 2018

*[Signature]* REGION FOUR ENGINEER

*[Signature]* ENGINEER OF DESIGN AND ENVIRONMENT

*[Signature]* DIRECTOR OF HIGHWAYS PROJECT IMPLEMENTATION

PRINTED BY THE AUTHORITY  
OF THE STATE OF ILLINOIS

INDEX OF SHEETS

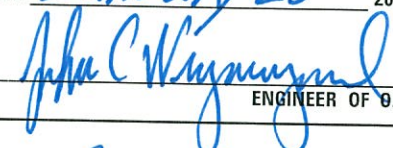
SHEET NO.	DESCRIPTION
1.	COVER SHEET
2.	INDEX OF SHEETS, STANDARDS, GENERAL NOTES & SIGNATURE
3.	SUMMARY OF QUANTITIES
4.	PROJECT LOCATION MAP
5.	PROJECT PLAN

STANDARDS


STANDARD NO.	DESCRIPTION
701400-09	APPROACH TO LANE CLOSURE, FREEWAY/EXPRESSWAY
701406-11	LANE CLOSURE, FREEWAY/EXPRESSWAY, DAY OPERATIONS ONLY
701901-07	TRAFFIC CONTROL DEVICES

**STATE OF ILLINOIS  
DEPARTMENT OF TRANSPORTATION  
DIVISION OF HIGHWAYS  
DISTRICT 6**


---

EXAMINED January 25<sup>th</sup> 20 18  
  
 ENGINEER OF OPERATIONS

---

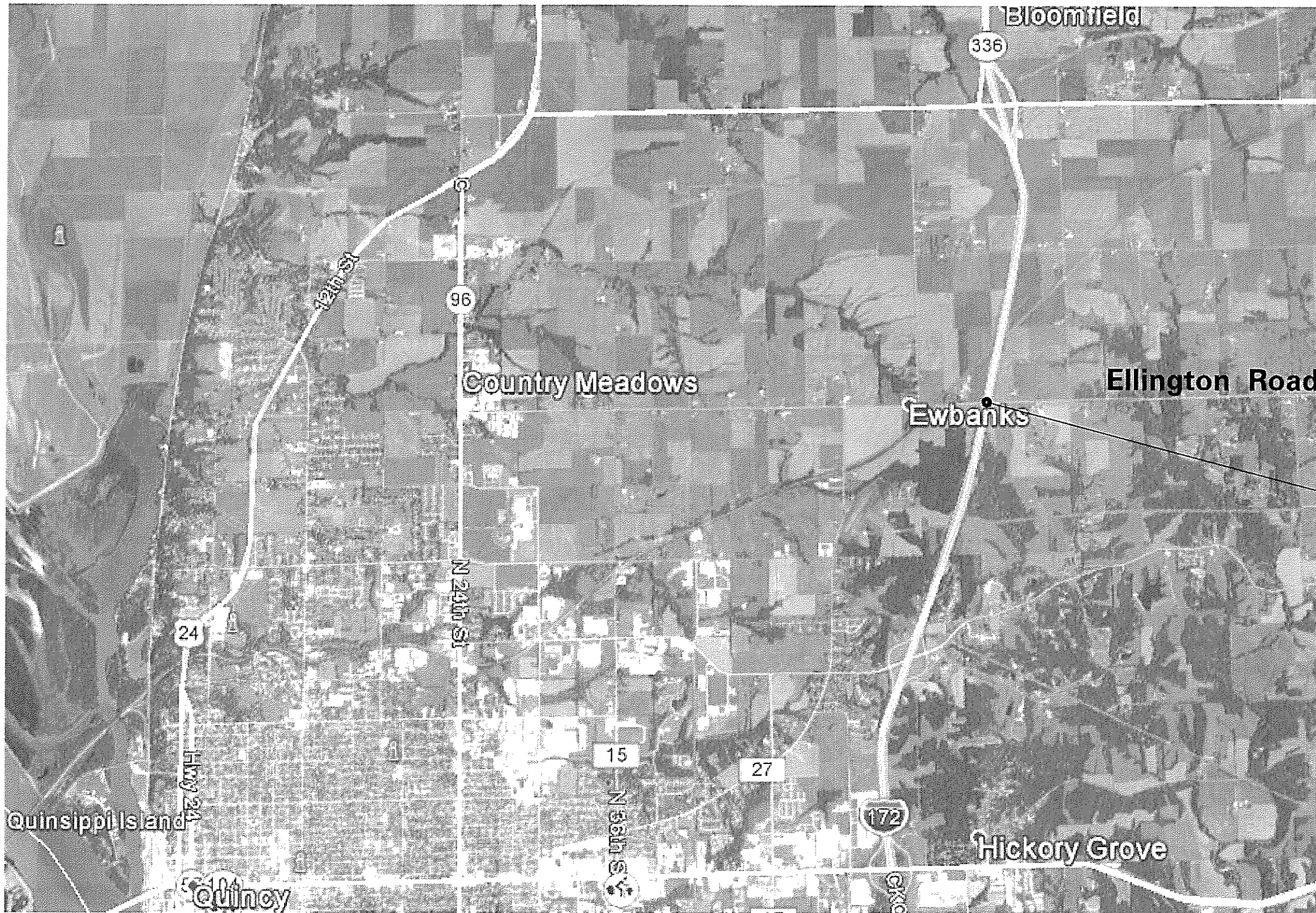
EXAMINED Jan 17<sup>th</sup> 20 18  
  
 ENGINEER OF PROJECT IMPLEMENTATION

---

EXAMINED January 19 2018  
  
 ENGINEER OF PROGRAM DEVELOPMENT

				FAI 172 (1172)
				0-01624-6019
				100% STATE
				ADAMS
				ROADWAY
				0043
				RURAL
CODE NO.	ITEM	UNIT	TOTAL QUANTITY	
54390230	INSERTION CULVERT LINER 36"	FOOT	301	301
67100100	MOBILIZATION	LSUM	1	1
70100700	TRAFFIC CONTROL AND PROTECTION, STANDARD 701406	LSUM	1	1

3



PROJECT LOCATION  
STA. 139+35.12

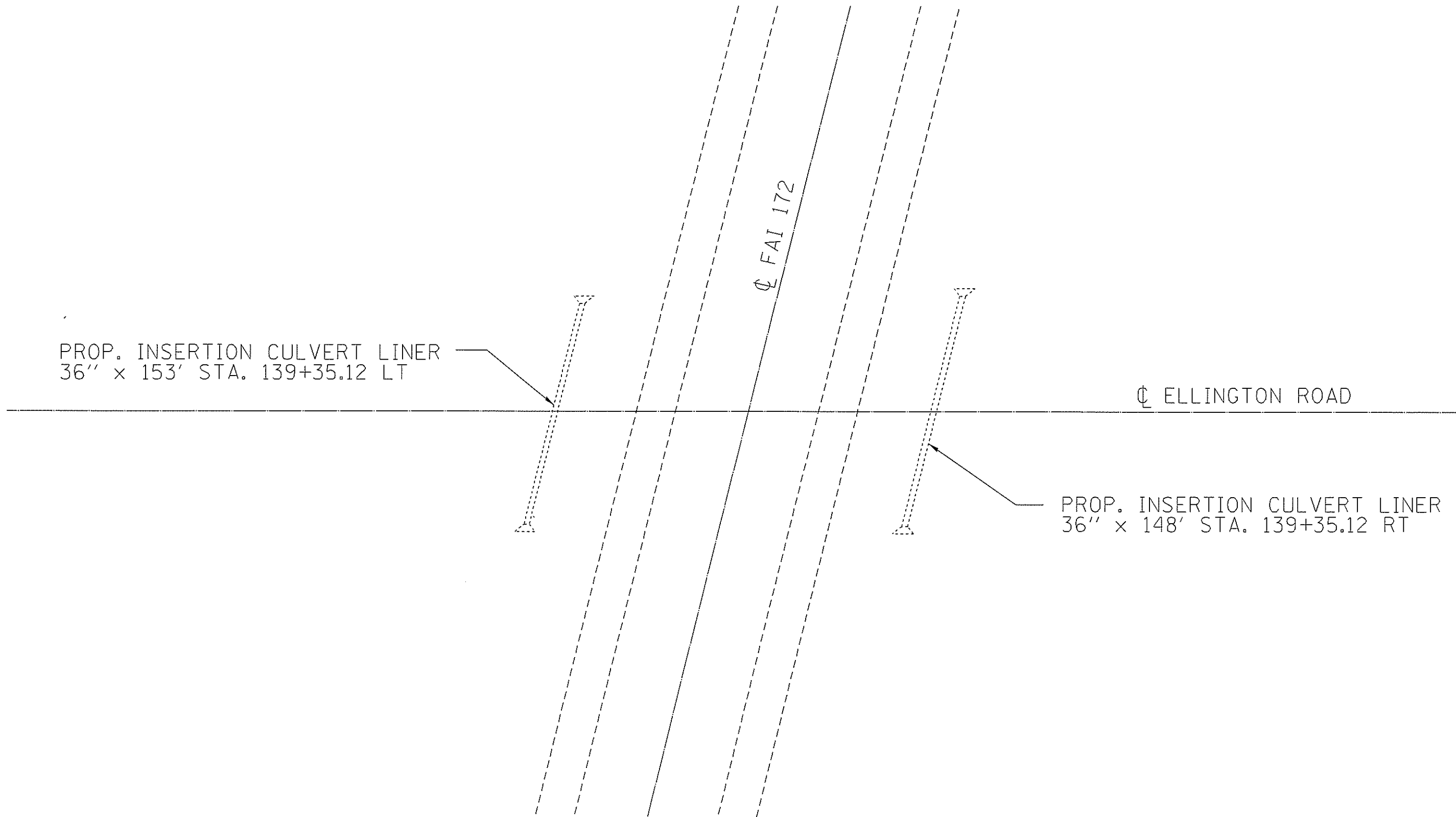
FILE NAME =	USER NAME = sharptd	DESIGNED -	REVISED -
S:\CONTRM\MAINT\CD0V72K40 - FAI 172 - Adams Co - Ellington Rd overpass - culvert lining	CDRAB\F2K40\sharptd\location-plan.dgn	CHECKED -	REVISED -
Default	PLOT DATE = 1/25/2018	DATE -	REVISED -

**STATE OF ILLINOIS  
DEPARTMENT OF TRANSPORTATION**

**LOCATION MAP**

SCALE: \_\_\_\_\_ SHEET \_\_\_\_\_ OF \_\_\_\_\_ SHEETS | STA. 234+75 TO STA. 235+10

F.A.I. RTE.	SECTION	COUNTY	TOTAL SHEETS	SHEET NO.
172	(1-5) CLV	ADAMS	5	4
CONTRACT NO. 72K40			[ILL.INDS.] FED. AID PROJECT	



PROP. INSERTION CULVERT LINER  
36" x 153' STA. 139+35.12 LT

℄ ELLINGTON ROAD

℄ FAI 172

PROP. INSERTION CULVERT LINER  
36" x 148' STA. 139+35.12 RT

FILE NAME =	USER NAME = sharptd	DESIGNED -	REVISED -	<b>STATE OF ILLINOIS DEPARTMENT OF TRANSPORTATION</b>	<b>LOCATION MAP</b>		F.A.I. RTE.	SECTION	COUNTY	TOTAL SHEETS	SHEET NO.
S:\CONTRM\MAIN7_CAD\72K40 - FAI 172 - Adams Co - Ellington Rd overpass - culvert lining	VORABN72K40-shr-5-plendgn	CHECKED -	REVISED -				172	(1-5) CLV	ADAMS	5	5
Default	PLOT SCALE = 20.0000' / in.	DATE -	REVISED -		SCALE: _____ SHEET _____ OF _____ SHEETS STA. _____ TO STA. _____		ILLINOIS FED. AID PROJECT CONTRACT NO. 72K40				
	PLOT DATE = 1/25/2018										