

**GENERAL NOTES**

1. Plan dimensions and details relative to existing plans are subject to nominal construction variations. The Contractor shall field verify existing dimensions and details affecting new construction and make necessary approved adjustments prior to construction or ordering of materials. Such variations shall not be cause for additional compensation for a change in scope of work; however, the Contractor will be paid for the quantity actually furnished at the unit price bid for the work.
2. Cleaning and painting of the existing structural steel shall be as specified in the special provision for "Cleaning and Painting Existing Steel Structures". All girders, cross frames, bearings, anchor bolts, and other structural steel within 10-feet (measured along the girder from the deck joints at each abutment and pier) shall be cleaned per Near White Blast Cleaning SSPC-SP10. Existing steel surfaces not covered in Note 2 shall be painted according to the requirements of Paint System 1-OZ/E/U. The color of the finish coat shall be Gray, Munsell No. 5B 7/1.
3. The exterior surfaces and bottom of the bottom flange of the fascia beams shall be cleaned per Commercial Grade Power Tool Cleaning and shall be painted according to the requirements of Paint System 1-OZ/E/U. The color of the final finish coat for the exterior and bottom of the bottom flange of the fascia beams shall be Blue, Munsell No. 10B 3/6.
4. Reinforcement bars designated (E) shall be epoxy coated.
5. Prior to pouring the new concrete deck, all heavy or loose rust, loose mill scale, and other loose or potentially detrimental foreign material shall be removed from the surfaces in contact with concrete. Tightly adhered paint may remain unless otherwise noted. Removal shall be accomplished by methods that will not damage the steel. The cost will be included in the pay item covering removal of the existing concrete.
6. The existing structural steel coating contains lead. The Contractor shall take appropriate precautions to deal with the presence of lead on this project.
7. Existing reinforcement bars extending into the removal area shall be cleaned, straightened and incorporated into the new construction. Any reinforcement bars that are damaged during concrete removal shall be replaced with an approved bar splicer or anchorage system. Cost shall be included with Concrete Removal.
8. Synthetic fibers shall be added to the Bridge Deck Latex Concrete Overlay. See Special Provisions.
9. Joint openings shall be adjusted in accordance with Article 520.04 of the Standard Specifications when the deck is poured at an ambient temperature other than 50°F.

10. A complete set of existing bridge plans can be obtained by contacting IDOT District 2:

IDOT District 2  
 Attn: Mahmoud Etemadi, P.E. 815-284-5393  
 819 Depot Avenue  
 Dixon, IL 61021

**INDEX OF SHEETS**

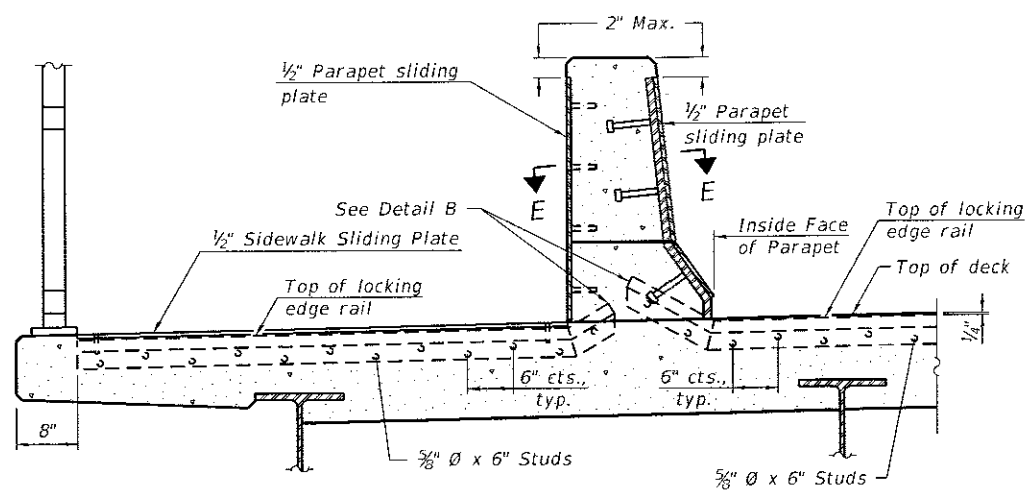
Sheet	Title
1.	General Plan & Elevation
2.	General Details
3.	Bridge Deck Repair Plans
4.	Concrete Overlay Cross Section
5.	Framing Plan and Painting Details
6.	Painting Details
7.	Strip Seal Joint Plan
8.	Strip Seal Joint Details (1 of 3)
9.	Strip Seal Joint Details (2 of 3)
10.	Strip Seal Joint Details (3 of 3)
11.	Substructure Repairs
12.	Approach Slab Details

**TOTAL BILL OF MATERIAL**

ITEM	UNIT	SUPER	SUB	TOTAL
Bituminous Materials (Tack Coat)	Pound	282	-	282
Hot-Mix Asphalt Surface Removal - Butt Joint	Sq Yd	313	-	313
Hot-Mix Asphalt Surface Course, Mix "D", N70	Ton	57	-	57
Hot-Mix Asphalt Surface Removal, 1/4"	Sq Yd	313	-	313
Protective Coat	Sq Yd	2,555	-	2,555
Saw Cuts	Foot	99	-	99
Concrete Removal	Cu Yd	16	-	16
Concrete Superstructure	Cu Yd	15.9	-	15.9
Bridge Deck Grooving (Longitudinal)	Sq Yd	2,352	-	2,352
Reinforcement Bars, Epoxy Coated	Pound	2,230	-	2,230
Bar Splicers	Each	28	-	28
Preformed Joint Seal Strip	Foot	131	-	131
Concrete Sealer	Sq Ft	-	1,660	1,660
Floor Drain Extension	Each	22	-	22
Bridge Deck Latex Concrete Overlay, 2 1/2 inches	Sq Yd	2,514	-	2,514
Containment and Disposal of Lead Paint Cleaning Residue No. 2	L Sum	1	-	1
Cleaning and Painting Steel Bridge, No. 2	L Sum	1	-	1
Bridge Deck Scarification 3/4 inch	Sq Yd	3,114	-	3,114
Manholes to be Adjusted	Each	1	-	1
Structural Repair of Concrete (Depth Equal to or less than 5 inches)	Sq Ft	-	4	4
Structural Repair of Concrete (Depth Greater than 5 inches)	Sq Ft	-	50	50
Deck Slab Repair (Full Depth, Type I)	Sq Yd	1	-	1
Deck Slab Repair (Full Depth, Type II)	Sq Yd	7	-	7
Diamond Grinding (Bridge Section)	Sq Yd	2,352	-	2,352

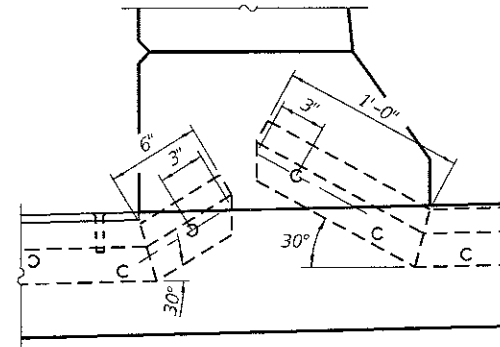
0810039-64L46-002-STR2.dgn

	DBS STERLING CONSULTANTS, INC. 1217 N. WALKER DRIVE SUITE 2000 CHICAGO, ILLINOIS 60642 TEL: (773) 399-1300 FAX: (773) 397-1056	USER NAME = Mike Livernois PLOT SCALE = PLOT DATE = 1/24/2018	DESIGNED - WPK DRAWN - GJS CHECKED - MBC DATE - 08/21/2017	REVISED - REVISED - REVISED - REVISED -	STATE OF ILLINOIS DEPARTMENT OF TRANSPORTATION	GENERAL DETAILS SN 081-0039 SHEET 2 OF 12	F.A.I. RTE. 599 SECTION 02 BRR 2017-1 COUNTY ROCK ISLAND TOTAL SHEETS 84 SHEET NO. 35	CONTRACT NO. 64L46 FED. ROAD DIST. NO. 2 ILLINOIS FED. AID PROJECT
	REV 4-16-18							

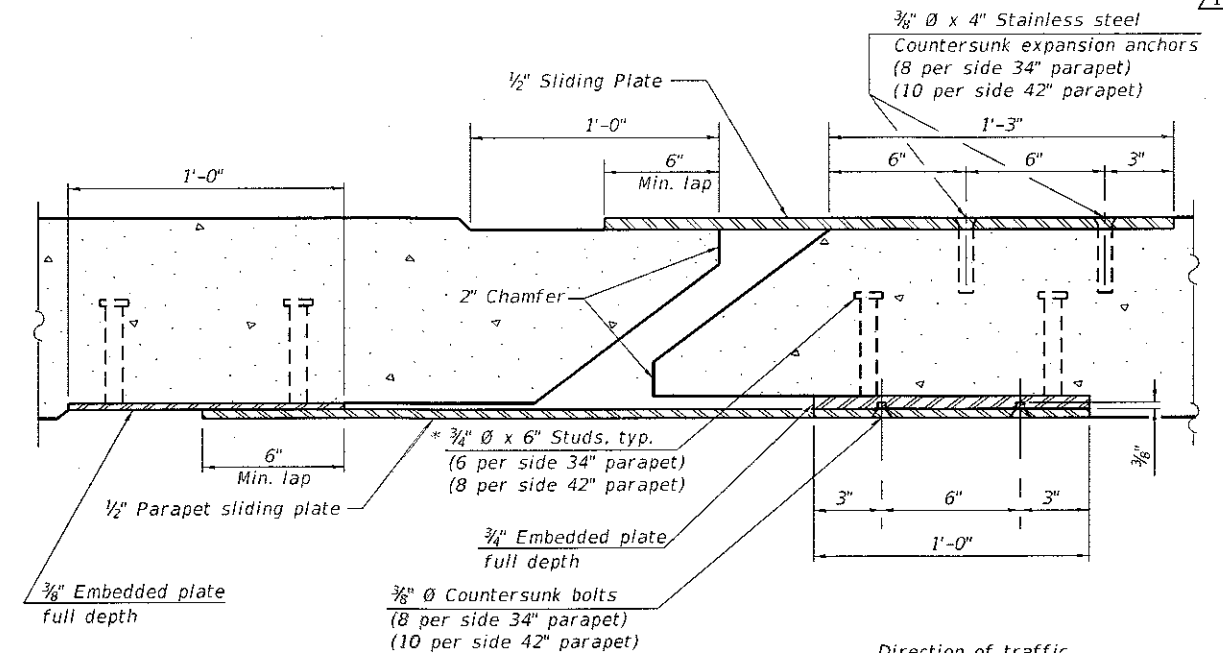


**ELEVATION AT DECK LEVEL SIDEWALK**

(Skews > 30° shown. Skews ≤ 30° similar except as shown in plan view.)

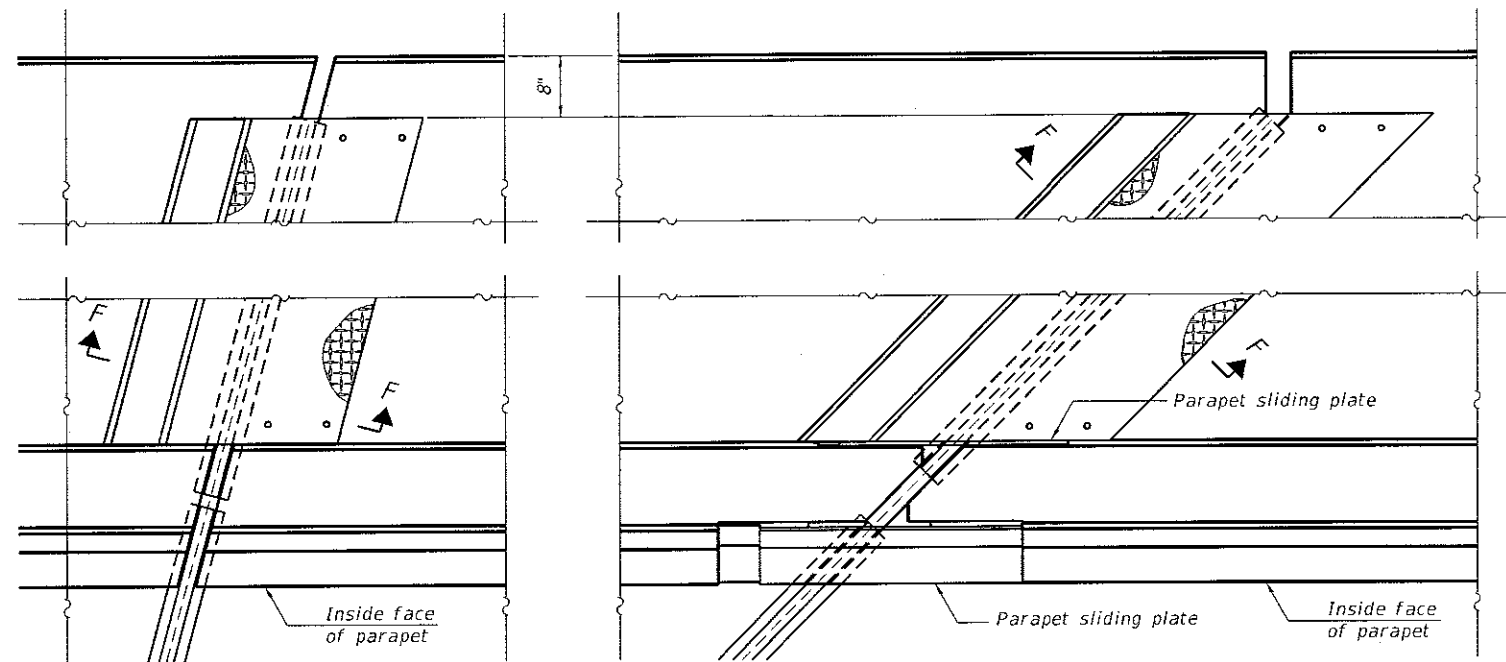


**DETAIL B**



**SECTION E-E**

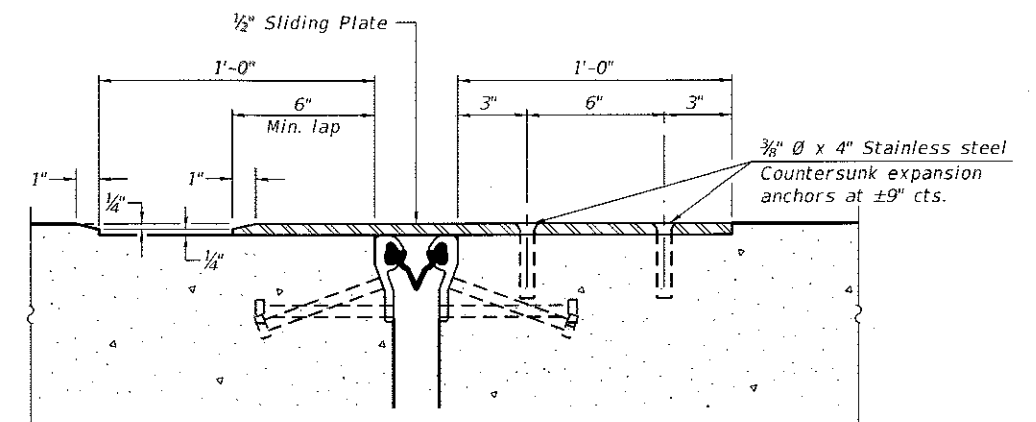
Direction of traffic



(FOR SKEWS ≤ 30°)

(FOR SKEWS > 30°)

**PLAN AT DECK LEVEL SIDEWALK**



**SECTION F-F**

EJ-SS-S

8-11-17

(Sheet 3 of 3)

WYNDALCO ENTERPRISES  
 19081 Old LaGrange Rd, Suite 106  
 Mokena, IL 60448  
 312.256.9090

USER NAME : #USER#  
 DESIGNED - M.J.L.  
 CHECKED - G.E.K.  
 DRAWN - M.J.L.  
 CHECKED - J.C.E.  
 PLOT SCALE :  
 PLOT DATE : #DATE#

DESIGNED - M.J.L.  
 CHECKED - G.E.K.  
 DRAWN - M.J.L.  
 CHECKED - J.C.E.  
 REVISED  
 REVISED  
 REVISED  
 REVISED

STATE OF ILLINOIS  
 DEPARTMENT OF TRANSPORTATION

PREFORMED JOINT STRIP SEAL - SIDEWALK  
 STRUCTURE NO. 081-0039

SHEET NO. 10 OF 12 SHEETS

F.A.P. RTE.	SECTION	COUNTY	TOTAL SHEETS	SHEET NO.
599	D2 BRR 2017-1	ROCK ISLAND	84	43
CONTRACT NO. 64L46			ILLINOIS FED. AID PROJECT	

REPLACED SHEET 4-16-18