

INDEX OF SHEETS

04-27-2018 LETTING ITEM 071

- 1 COVER SHEET
- 2 SUMMARY OF QUANTITIES
- 3-17 MAINTENANCE OF TRAFFIC PLANS & STANDARDS
- 18-21 STRUCTURAL REPAIR PLANS (SN 037-0001, SN 037-0002)

HIGHWAY STANDARDS

- 000001-06 STANDARD SYMBOLS, ABBREVIATIONS AND PATTERNS
- 001006 DECIMAL EQUIVALENTS OF AN INCH AND FOOT
- 701101-05 OFF ROAD OPERATIONS MULTILANE, 15' TO 24" FROM PAVEMENT EDGE
- 701400-09 APPROACH TO LANE CLOSURE, FREEWAY/EXPRESSWAY
- 701401-11 LANE CLOSURE, FREEWAY/EXPRESSWAY
- 701402-12 LANE CLOSURE, FREEWAY/EXPRESSWAY WITH BARRIER
- 701901-07 TRAFFIC CONTROL DEVICES
- 704001-08 TEMPORARY CONCRETE BARRIER
- 720011-01 METAL POSTS FOR SIGNS, MARKERS AND DELINEATORS
- 728001-01 TELESCOPING STEEL SIGN SUPPORT
- 729001-01 APPLICATIONS OF TYPES OF A&B METAL POSTS

NOTES:

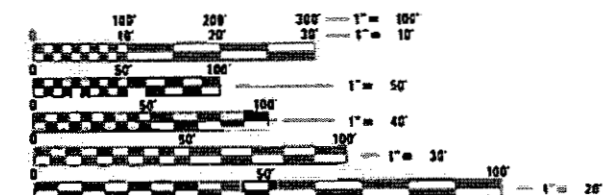
ALL BORROW WASTE SITES MUST BE APPROVED BY THE DEPARTMENT PRIOR TO REMOVING ANY MATERIAL FROM THE PROJECT OR INITIATING ANY EARTHMOVING ACTIVITIES, INCLUDING TEMPORARY STOCKPILING OUTSIDE THE LIMITS OF CONSTRUCTION.

THE CONTRACTOR SHALL BE RESPONSIBLE FOR PROTECTING UTILITY PROPERTY DURING CONSTRUCTION OPERATIONS AS OUTLINED IN ARTICLE 107.31 OF THE STANDARD SPECIFICATIONS. THE CONTRACTOR SHALL CONTACT JULIE A MINIMUM OF 48 HOURS PRIOR TO COMMENCING WORK AT 800-892-0123.

NO MATERIALS, EQUIPMENT, VEHICLES OR OTHER HAZARDS SHALL BE WITHIN 2'-0" OF THE TEMPORARY CONCRETE BARRIER. EQUIPMENT THAT IS ACTIVELY WORKING WITH 2'-0" OF THE BARRIER WALL MAY BE ALLOWED FOR A SHORT DURATION, IF APPROVED BY THE ENGINEER AND THERE IS NOT ANOTHER METHOD TO COMPLETE THE WORK.

TRAFFIC DATA:

FUNCTIONAL CLASSIFICATION
FEDERAL AID INTERSTATE
 2017 ADT = 10,650
 EST. TRUCK % = 33%



FULL SIZE PLANS HAVE BEEN PREPARED USING STANDARD ENGINEERING SCALES. REDUCED SIZED PLANS WILL NOT CONFORM TO STANDARD SCALES. IN MAKING MEASUREMENTS ON REDUCED PLANS, THE ABOVE SCALES MAY BE USED.

J.U.L.I.E.
 JOINT UTILITY LOCATION INFORMATION FOR EXCAVATION
 1-800-892-0123
 OR 811

PROJECT ENGINEER: JEFFREY EHRHART, P.E. (312) 256-9090
 PROJECT MANAGER: MAHMOUD ETEMADI, P.E. (815) 284-5359

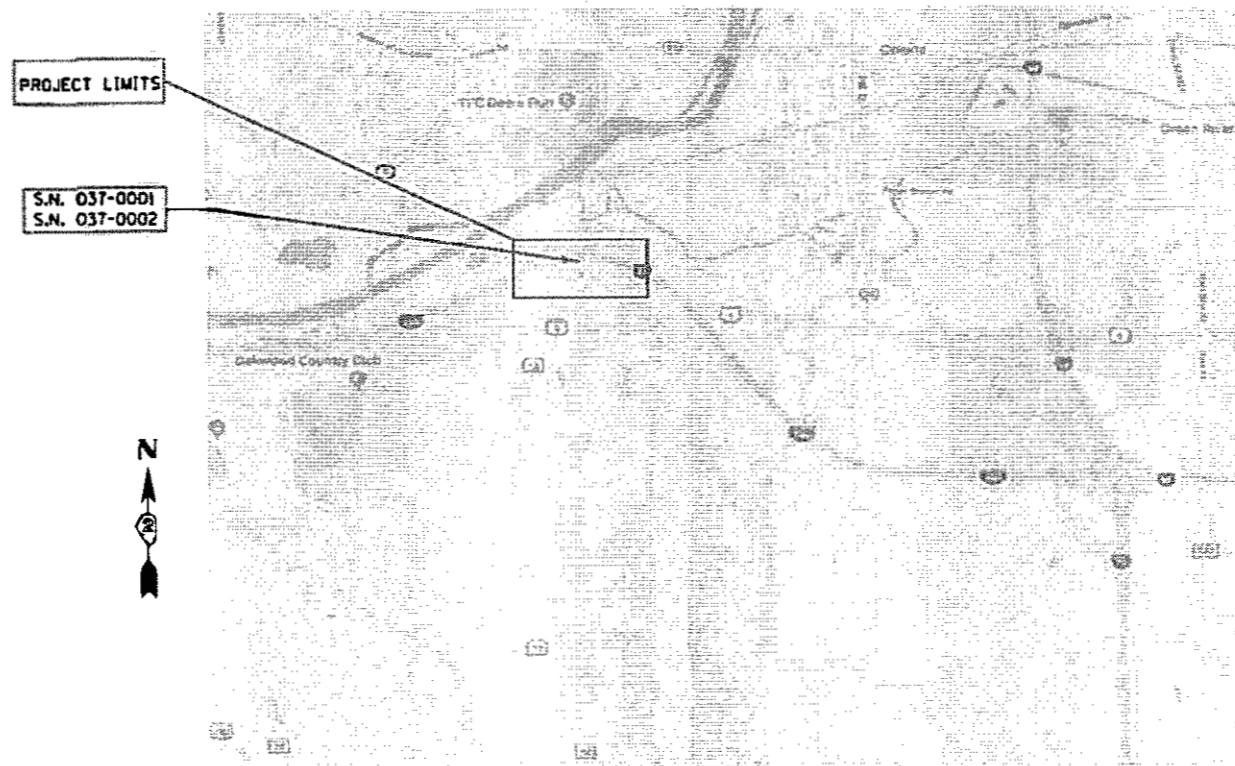
CONTRACT NO. 64M62

STATE OF ILLINOIS
DEPARTMENT OF TRANSPORTATION
DIVISION OF HIGHWAYS
PROPOSED
HIGHWAY PLANS

FAI ROUTE 74/280 (I-74/280)
SECTION D2 BJR 2018-1
BRIDGE REHABILITATION
S.N. 037-0001, S.N. 037-002

HENRY COUNTY

C-92-023-18



LOCATION MAP
 N.T.S.

R1E
4th PM

GROSS LENGTH = 3,520 FT. = 0.667 MILE
 NET LENGTH = 3,520 FT. = 0.667 MILE



F.A.I. RTE.	SECTION	COUNTY	TOTAL SHEETS	SHEET NO.
074	D2 BJR 2018-1	HENRY	21	1
		ILLINOIS	CONTRACT NO. 64M62	

D-92-077-18



LOCATION OF SECTION INDICATED THUS: —

STATE OF ILLINOIS
 DEPARTMENT OF TRANSPORTATION
 DIVISION OF HIGHWAYS

SUBMITTED 1-25-2018
[Signature]
 DEPUTY DIRECTOR OF HIGHWAYS REGION ENGINEER

Mar 23 2018
[Signature]
 ACTING ENGINEER OF DESIGN AND ENVIRONMENT

Jan 23 2018
[Signature]
 DIRECTOR OF HIGHWAYS PROJECT IMPLEMENTATION

PRINTED BY THE AUTHORITY
OF THE STATE OF ILLINOIS

SUMMARY OF QUANTITIES

CODE NAME	ITEM	UNIT	TOTAL QUANTITY	CONSTRUCTION CODE	
				STATE 100%	STATE 100%
				BRIDGE	ROADWAY
				0047 037-0001 037-0002	0004 URBAN
50102400	CONCRETE REMOVAL	CU YD	24.2	24.2	
50300255	CONCRETE SUPERSTRUCTURE	CU YD	24.0	24.0	
50300300	PROTECTIVE COAT	SQ YD	62.3	62.3	
50800205	REINFORCEMENT BARS, EPOXY COATED	POUND	3,570	3,570	
50800515	BAR SPLICERS	EACH	64	64	
52000110	PREFORMED JOINT STRIP SEAL	FOOT	168	168	
67100100	MOBILIZATION	LSUM	1		1
70100205	TRAFFIC CONTROL AND PROTECTION, STANDARD 701401	EACH	1		1
70100207	TRAFFIC CONTROL AND PROTECTION, STANDARD 701402	EACH	1		1
70107005	PAVEMENT MARKING BLACKOUT TAPE, 5"	FOOT	1,526		1,526
70300150	SHORT TERM PAVEMENT MARKING REMOVAL	SQ FT	637		637
70300520	PAVEMENT MARKING TAPE, TYPE III 4"	FOOT	9,196		9,196
70400100	TEMPORARY CONCRETE BARRIER	FOOT	825		825
70400200	RELOCATION TEMPORARY CONCRETE BARRIER	FOOT	825		825
70600250	IMPACT ATTENUATORS, TEMPORARY (NON-REDIRECTIVE), TEST LEVEL 3	EACH	2		2
70600350	IMPACT ATTENUATORS, RELOCATE (NON-REDIRECTIVE), TEST LEVEL 3	EACH	2		2
X7030005	TEMPORARY PAVEMENT MARKING REMOVAL	SQ FT	3,066		3,066

WYNNDALCO
 19081 Old LaGrange Rd, Ste. 106
 Mokena, IL 60448
 312.256.9090

USER NAME = #USER#	DESIGNED - MJL	REVISED
	CHECKED - JCE	REVISED
PLOT SCALE =	DRAWN - MJL	REVISED
PLOT DATE = #DATE#	CHECKED - JCE	REVISED

STATE OF ILLINOIS
DEPARTMENT OF TRANSPORTATION

SUMMARY OF QUANTITIES
STRUCTURE NOS. 037-0001 & 037-0002

SHEET NO. 1 OF 1 SHEETS

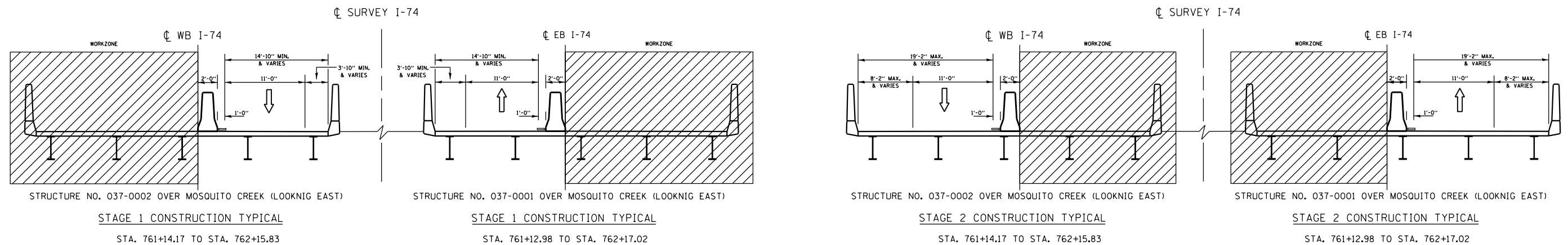
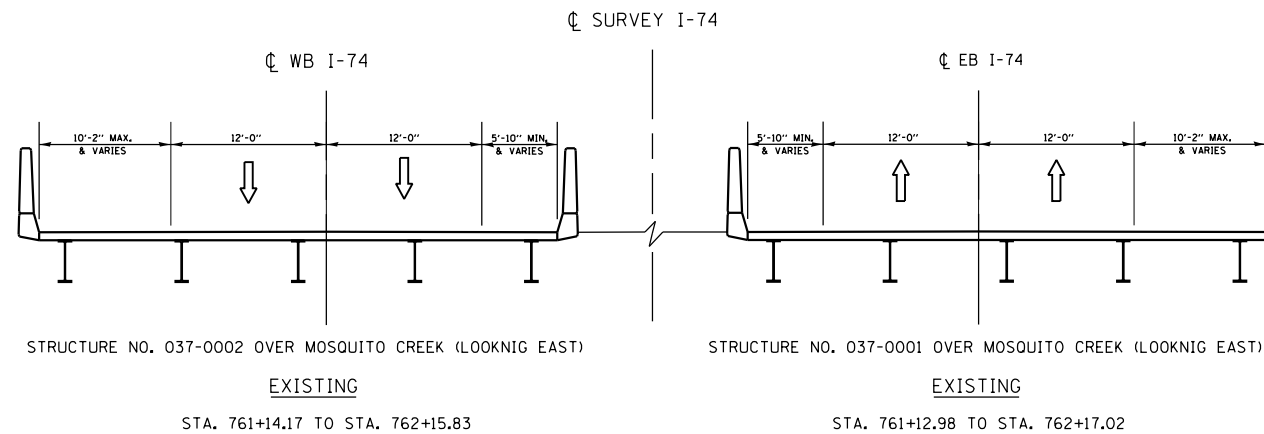
F.A.I. RTE.	SECTION	COUNTY	TOTAL SHEETS	SHEET NO.
074	D2 BJR 2018-1	HENRY	21	2
CONTRACT NO. 64M62				
[ILLINOIS] FED. AID PROJECT				

CONSTRUCTION STAGING GENERAL NOTES

1. ALL SIGNING MUST BE IN ACCORDANCE WITH THE APPLICABLE PROVISIONS OF THE STATE OF ILLINOIS "STANDARD SPECIFICATIONS FOR ROAD AND BRIDGE CONSTRUCTION" ADOPTED APRIL 1, 2016, THE DETAILS IN THESE PLANS, THE LATEST EDITION OF THE IDOT BUREAU OF DESIGN AND ENVIRONMENT HIGHWAY STANDARDS AND THE LATEST EDITION OF THE "MANUAL ON UNIFORM TRAFFIC CONTROL DEVICES".
2. LONGITUDINAL DIMENSIONS SHOWN ON THESE PLANS MAY BE ADJUSTED TO FIT FIELD CONDITIONS AS DIRECTED BY THE ENGINEER.
3. THE CONTRACTOR MUST BE RESPONSIBLE FOR ENSURING THAT ALL BARRICADES, SIGNS, LIGHTS AND OTHER DEVICES INSTALLED ARE IN PLACE AND OPERATING 24 HOURS EACH DAY INCLUDING SUNDAYS AND HOLIDAYS DURING THE TIME THIS CONSTRUCTION IS IN EFFECT.
4. ALL EXISTING SIGNING THAT IS NOT APPLICABLE WHILE THE CONSTRUCTION IS IN EFFECT MUST BE COMPLETELY COVERED BY THE CONTRACTOR.
5. THE SIZES OF ALL SIGNS NOT SPECIFIED IN THESE PLANS MUST BE AS REQUIRED BY THE MANUAL ON UNIFORM TRAFFIC CONTROL DEVICES.
6. AS A MINIMUM, ALL AMBER FLASHING LIGHTS THAT ARE REQUIRED MUST MEET THE REQUIREMENTS FOR TYPE A - LOW INTENSITY FLASHING LIGHTS IN ARTICLE 702.04 OF THE STANDARD SPECIFICATIONS. ALL LIGHTS SHALL OPERATE DURING HOURS OF DARKNESS. ONLY LIGHTS THAT HAVE BEEN APPROVED BY THE ILLINOIS DEPARTMENT OF TRANSPORTATION MUST BE USED.
7. PROPOSED MAINTENANCE OF TRAFFIC SIGNING MUST BE COVERED OR REMOVED WHEN NOT REQUIRED DURING A SPECIFIC STAGE OF CONSTRUCTION.
8. SEE SUGGESTED MAINTENANCE OF TRAFFIC PLAN FOR ADDITIONAL SIGNING.
9. CHANGEABLE MESSAGE SIGNS TO BE PROVIDED AT LOCATIONS SHOWN ON PLANS OR AS DIRECTED BY THE ENGINEER.
10. THE CONTRACTOR MUST CONDUCT HIS WORK IN SUCH A MANNER THAT EMERGENCY VEHICLES WILL HAVE ACCESS TO THE AREA AT ALL TIMES.
11. THE CONTRACTOR MUST NOTIFY THE IDOT BUREAU OF TRAFFIC AS REQUIRED 72 HOURS IN ADVANCE OF BEGINNING WORK (815) 284-5474.
12. SIGN SPACING SHALL BE PER IDOT STANDARD 701400, 701401, 701402.
13. CONTRACTOR TO BE IN ACCORDANCE WITH IDOT STANDARDS 701400, 701401, AND 701402.

TOTAL MAINTENANCE OF TRAFFIC – SUMMARY OF QUANTITIES

PAY ITEM	DESCRIPTION	UNIT	QUANTITY
70100205	TRAFFIC CONTROL AND PROTECTION, STANDARD 701401	EACH	1
70100207	TRAFFIC CONTROL AND PROTECTION, STANDARD 701402	EACH	1
70107005	PAVEMENT MARKING BLACKOUT TAPE, 5"	FOOT	1526
70300150	SHORT TERM PAVEMENT MARKING REMOVAL	SQ FT	637
70300520	PAVEMENT MARKING TAPE, TYPE III 4"	FOOT	9196
X7030005	TEMPORARY PAVEMENT MARKING REMOVAL	SQ FT	3066
70400100	TEMPORARY CONCRETE BARRIER	FOOT	825
70400200	RELOCATION TEMPORARY CONCRETE BARRIER	FOOT	825
70600250	IMPACT ATTENUATORS, TEMPORARY (NON-REDIRECTIVE), TEST LEVEL 3	EACH	2
70600350	IMPACT ATTENUATORS, RELOCATE (NON-REDIRECTIVE), TEST LEVEL 3	EACH	2



STATE OF ILLINOIS
DEPARTMENT OF TRANSPORTATION

GENERAL NOTES

SHEET 1 OF 1 SHEETS

F.A.J. RTE.	SECTION	COUNTY	TOTAL SHEETS	SHEET NO.
74	D2 BJR 2018-1	HENRY	15	1
			CONTRACT NO. 64M62	

ILLINOIS FED. AID PROJECT







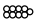
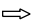


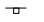
MODEL: D:\dtd\it... FILE NAME: P:\0235\000535_06_174 over Mosquito Creek\CADD_Sheets\02353506-01-General Notes.dgn

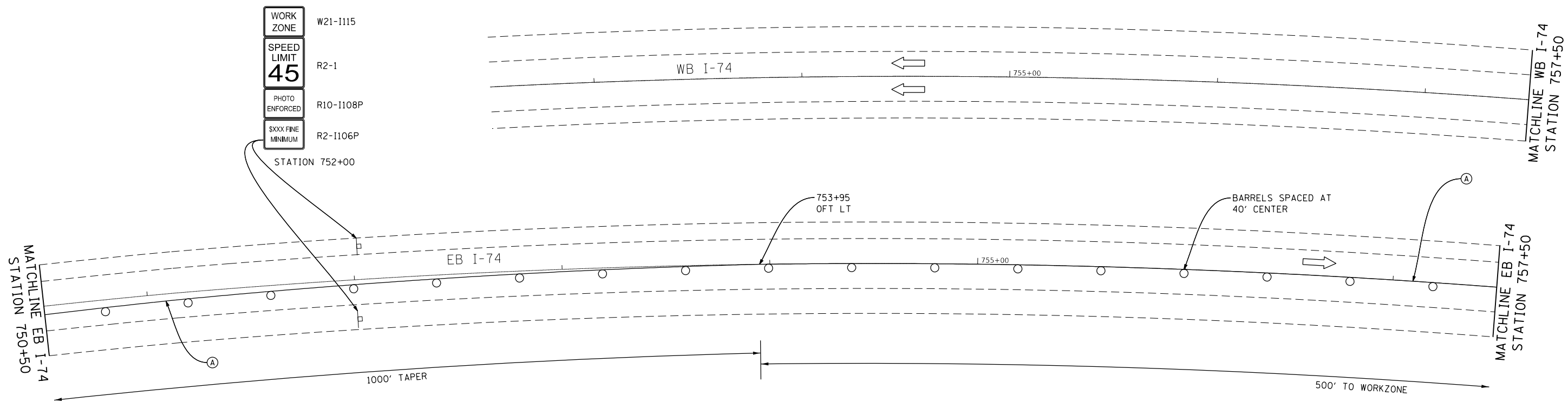
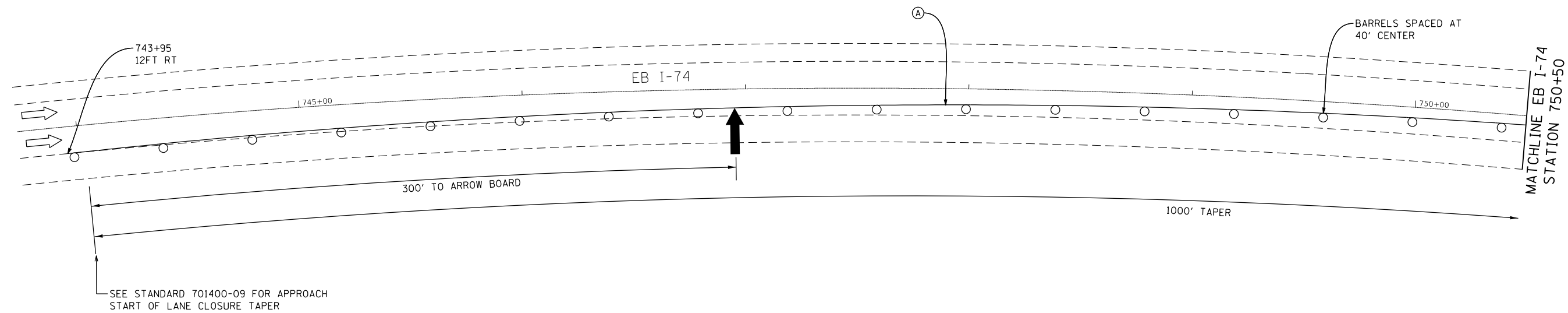


USER NAME = JSpears	DESIGNED - JS	REVISED -
PLOT SCALE =	DRAWN - JS	REVISED -
PLOT DATE = 1/15/2018	CHECKED - MM	REVISED -
	DATE -	REVISED -

DESIGNED - JS	REVISED -
DRAWN - JS	REVISED -
CHECKED - MM	REVISED -
DATE -	REVISED -

LEGEND

-  - WORK ZONE
-  - TEMPORARY CONCRETE BARRIER WALL
-  - TEMPORARY PAVEMENT MARKING
-  - DRUM WITH STEADY BURNING BI-DIRECTIONAL LIGHT
-  - TYPE III BARRICADE
-  - ARROW BOARD
-  - IMPACT ATTENUATOR TEST LEVEL 3
-  - TRAFFIC DIRECTION
-  - PAVEMENT MARKING TAPE, TYPE III 4"
-  - PAVEMENT MARKING BLACKOUT TAPE, 4"
-  - TEMPORARY TRAFFIC SIGN



MODEL: D:\dtp\it... FILE NAME: P:\02535\000\535_06_174_over_Mozgoutro_Creek\CADD_Sheet\0253506-shr-MOT-Stage1.dgn



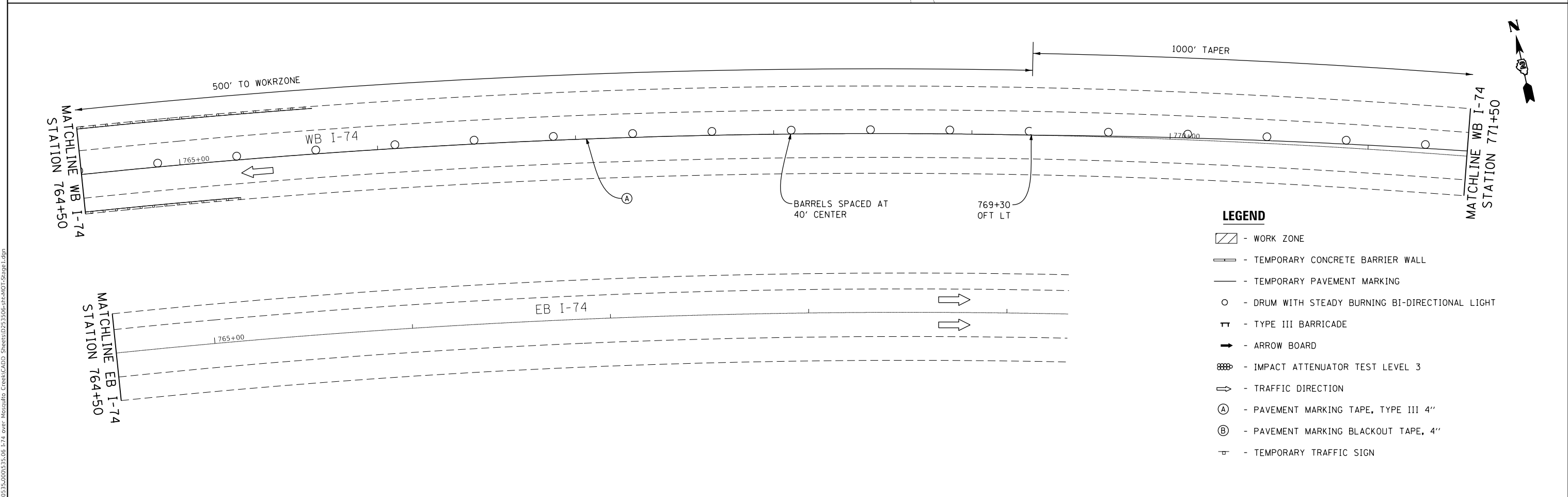
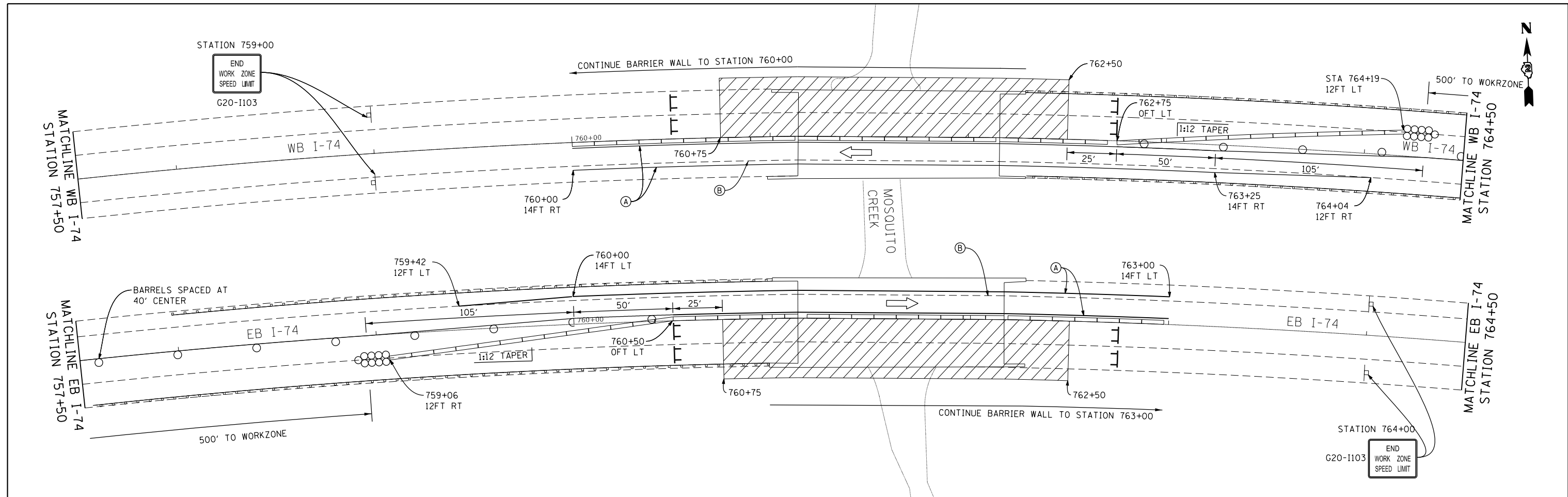
USER NAME = JSpears	DESIGNED - JS	REVISED -
PLOT SCALE = 50.0000 ' / in.	DRAWN - JS	REVISED -
PLOT DATE = 1/15/2018	CHECKED - MM	REVISED -
	DATE -	REVISED -

STATE OF ILLINOIS
DEPARTMENT OF TRANSPORTATION

MAINTENANCE OF TRAFFIC
STAGE 1 PLAN

SHEET 1 OF 3 SHEETS STA. 743+95 TO STA. 757+50

F.A.I. RTE.	SECTION	COUNTY	TOTAL SHEETS	SHEET NO.
74	D2 BJR 2018-1	HENRY	15	2
CONTRACT NO. 64M62				
ILLINOIS FED. AID PROJECT				



- LEGEND**
- WORK ZONE
 - TEMPORARY CONCRETE BARRIER WALL
 - TEMPORARY PAVEMENT MARKING
 - DRUM WITH STEADY BURNING BI-DIRECTIONAL LIGHT
 - TYPE III BARRICADE
 - ARROW BOARD
 - IMPACT ATTENUATOR TEST LEVEL 3
 - TRAFFIC DIRECTION
 - PAVEMENT MARKING TAPE, TYPE III 4"
 - PAVEMENT MARKING BLACKOUT TAPE, 4"
 - TEMPORARY TRAFFIC SIGN

MODEL: D:\dtp\11
 FILE NAME: P:\02535000\53500_174_over_Mosquito_Creek\CADD_Sheets\02535006-sh1-MOT-Stage1.dgn

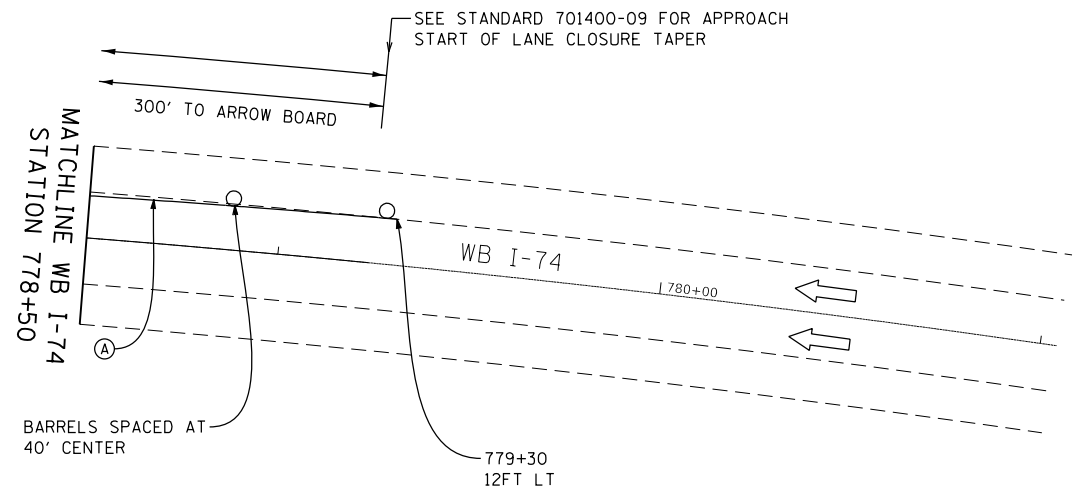
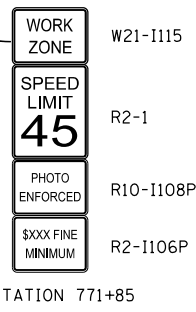
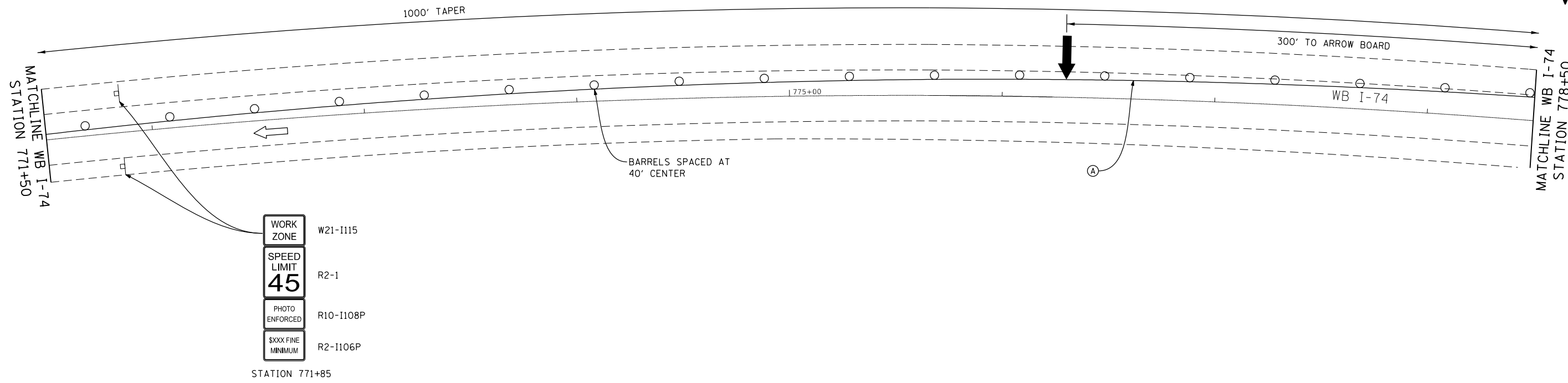
USER NAME = JSpears	DESIGNED - JS	REVISED -
DRAWN - JS	REVISED -	
PLOT SCALE = 50.0000' / in.	CHECKED - MM	REVISED -
PLOT DATE = 1/15/2018	DATE -	REVISED -

**STATE OF ILLINOIS
 DEPARTMENT OF TRANSPORTATION**

**MAINTENANCE OF TRAFFIC
 STAGE 1 PLAN**

SHEET 2 OF 3 SHEETS STA. 757+50 TO STA. 771+50

F.A.J. RTE.	SECTION	COUNTY	TOTAL SHEETS	SHEET NO.
74	D2 BJR 2018-1	HENRY	15	3
ILLINOIS FED. AID PROJECT			CONTRACT NO. 64M62	



STAGE 1 MAINTENANCE OF TRAFFIC – SUMMARY OF QUANTITIES

PAY ITEM	DESCRIPTION	UNIT	QUANTITY
70100205	TRAFFIC CONTROL AND PROTECTION, STANDARD 701401	EACH	0.5
70100207	TRAFFIC CONTROL AND PROTECTION, STANDARD 701402	EACH	0.5
70107005	PAVEMENT MARKING BLACKOUT TAPE, 5"	FOOT	762
70300150	SHORT TERM PAVEMENT MARKING REMOVAL	SQ FT	318
70300520	PAVEMENT MARKING TAPE, TYPE III 4"	FOOT	4597
X7030005	TEMPORARY PAVEMENT MARKING REMOVAL	SQ FT	1533
70400100	TEMPORARY CONCRETE BARRIER	FOOT	825
70400200	RELOCATION TEMPORARY CONCRETE BARRIER	FOOT	-
70600250	IMPACT ATTENUATORS, TEMPORARY (NON-REDIRECTIVE), TEST LEVEL 3	EACH	2
70600350	IMPACT ATTENUATORS, RELOCATE (NON-REDIRECTIVE), TEST LEVEL 3	EACH	-

- LEGEND**
- WORK ZONE
 - TEMPORARY CONCRETE BARRIER WALL
 - TEMPORARY PAVEMENT MARKING
 - DRUM WITH STEADY BURNING BI-DIRECTIONAL LIGHT
 - TYPE III BARRICADE
 - ARROW BOARD
 - IMPACT ATTENUATOR TEST LEVEL 3
 - TRAFFIC DIRECTION
 - PAVEMENT MARKING TAPE, TYPE III 4"
 - PAVEMENT MARKING BLACKOUT TAPE, 4"
 - TEMPORARY TRAFFIC SIGN

MODEL: D:\d4\11...
 FILE NAME: P:\02535000\535_06_174_over_Magaultto_Creek\CADD_Sheets\02535006-int-MOT-Stage1.dgn



USER NAME = JSpears	DESIGNED - JS	REVISED -
PLOT SCALE = 50.0000 ' / in.	CHECKED - MM	REVISED -
PLOT DATE = 1/15/2018	DATE -	REVISED -

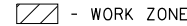
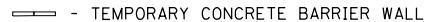


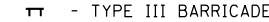






STATE OF ILLINOIS
DEPARTMENT OF TRANSPORTATION

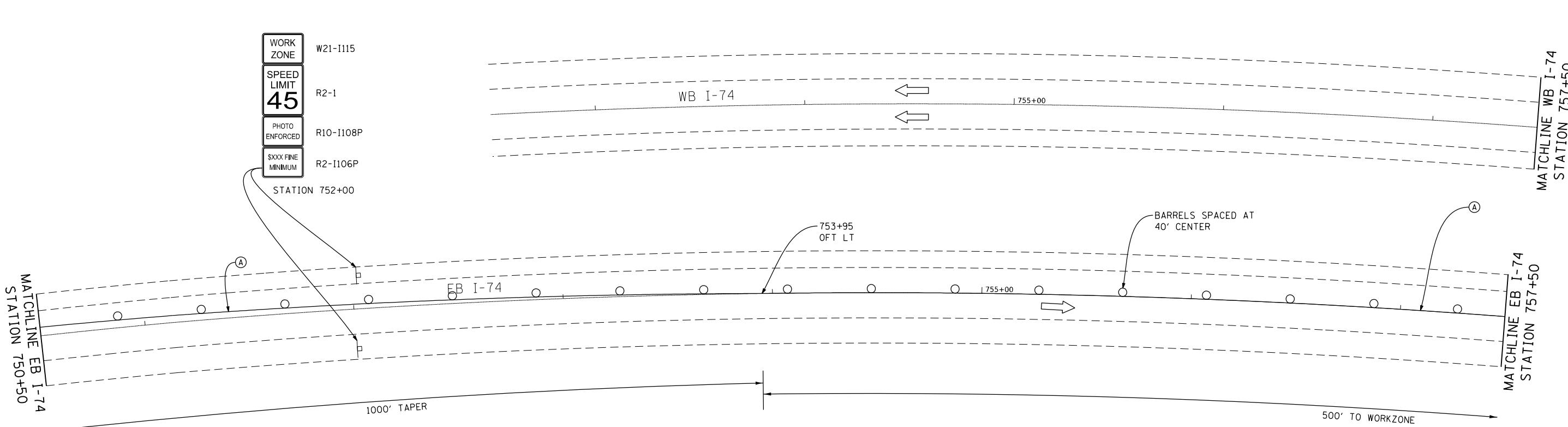
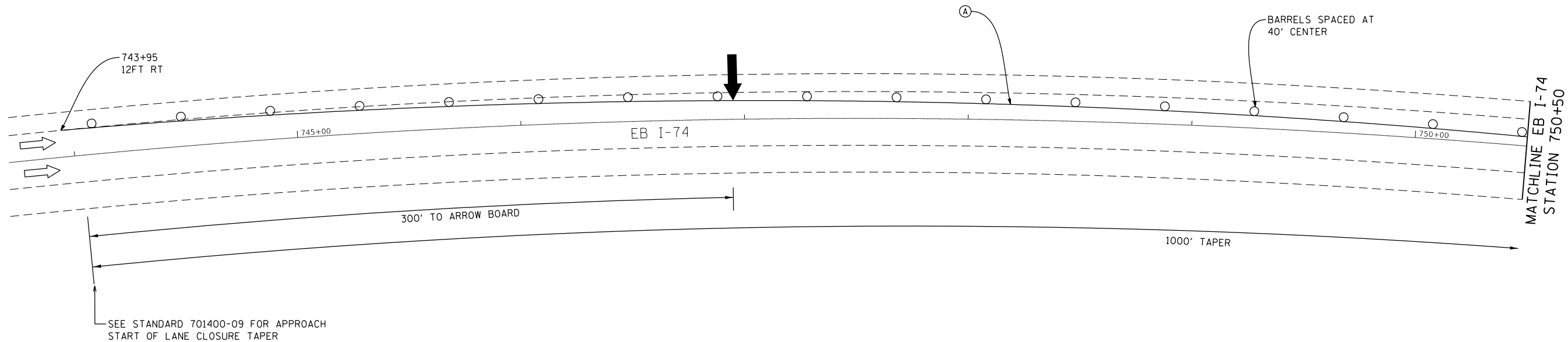
MAINTENANCE OF TRAFFIC
STAGE 1 PLAN

SHEET 3 OF 3 SHEETS STA. 771+50 TO STA. 779+30

F.A.J. RTE.	SECTION	COUNTY	TOTAL SHEETS	SHEET NO.
74	D2 BJR 2018-1	HENRY	15	4
CONTRACT NO. 64M62			ILLINOIS FED. AID PROJECT	

LEGEND

-  - WORK ZONE
-  - TEMPORARY CONCRETE BARRIER WALL
-  - TEMPORARY PAVEMENT MARKING
-  - DRUM WITH STEADY BURNING BI-DIRECTIONAL LIGHT
-  - TYPE III BARRICADE
-  - ARROW BOARD
-  - IMPACT ATTENUATOR TEST LEVEL 3
-  - TRAFFIC DIRECTION
-  - PAVEMENT MARKING TAPE, TYPE III 4"
-  - PAVEMENT MARKING BLACKOUT TAPE, 4"
-  - TEMPORARY TRAFFIC SIGN



WORK ZONE	W21-1115
SPEED LIMIT	R2-1
45	
PHOTO ENFORCED	R10-1108P
XXXX FINE MINIMUM	R2-1106P
STATION 752+00	

MODEL: D:\d4\11...
 FILE NAME: P:\02535000\535_06_174...
 over: Magzouto_Creek\CADD_Sheets\0253506-shr-MOT-Stage2.dgn



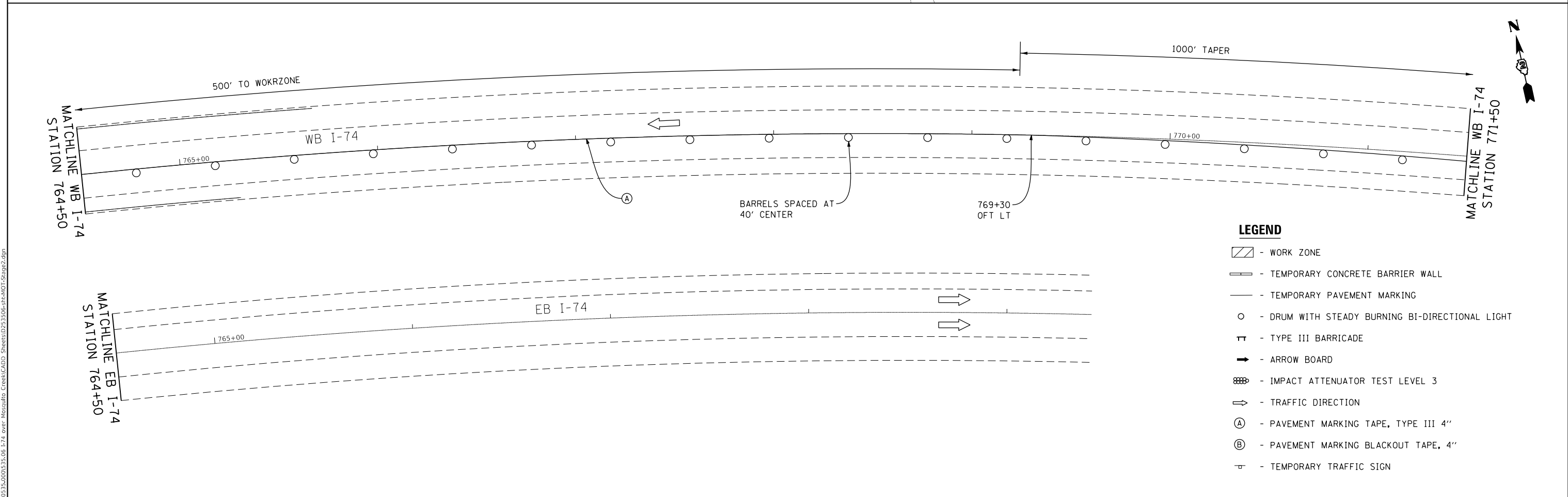
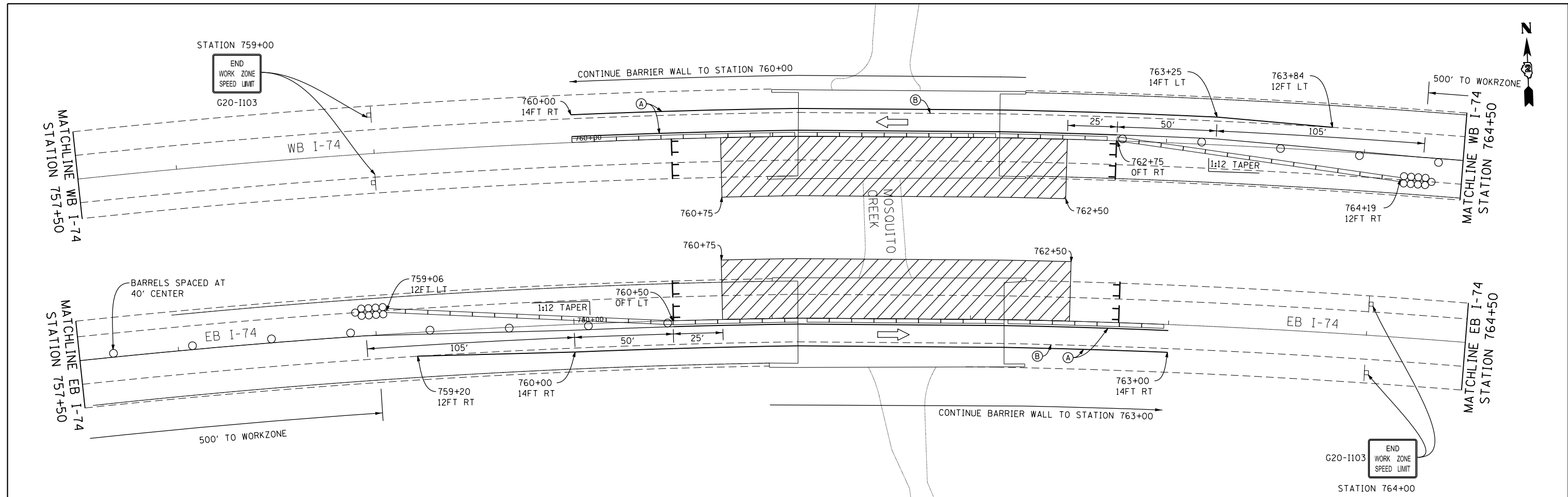
USER NAME = JSpears	DESIGNED - JS	REVISED -
PLOT SCALE = 50.0000' / in.	DRAWN - JS	REVISED -
PLOT DATE = 1/15/2018	CHECKED - MM	REVISED -
	DATE -	REVISED -

**STATE OF ILLINOIS
DEPARTMENT OF TRANSPORTATION**

**MAINTENANCE OF TRAFFIC
STAGE 2 PLAN**

SHEET 1 OF 3 SHEETS STA. 743+95 TO STA. 757+50

F.A.I. RTE.	SECTION	COUNTY	TOTAL SHEETS	SHEET NO.
74	D2 BJR 2018-1	HENRY	15	5
CONTRACT NO. 64M62				
ILLINOIS FED. AID PROJECT				



- LEGEND**
- WORK ZONE
 - TEMPORARY CONCRETE BARRIER WALL
 - TEMPORARY PAVEMENT MARKING
 - DRUM WITH STEADY BURNING BI-DIRECTIONAL LIGHT
 - TYPE III BARRICADE
 - ARROW BOARD
 - IMPACT ATTENUATOR TEST LEVEL 3
 - TRAFFIC DIRECTION
 - PAVEMENT MARKING TAPE, TYPE III 4"
 - PAVEMENT MARKING BLACKOUT TAPE, 4"
 - TEMPORARY TRAFFIC SIGN

MODEL: D:\dtp\11
 FILE NAME: P:\02535000\5135_06_174 over Mosquito Creek\CADD_Sheets\02535006-01-MOT-Stage2.dgn

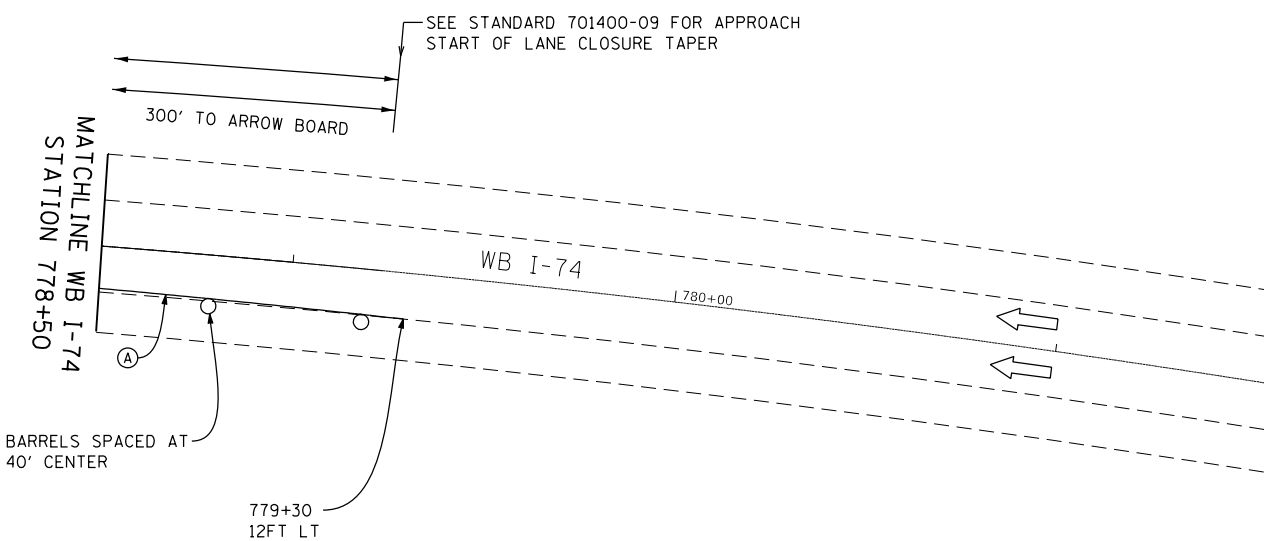
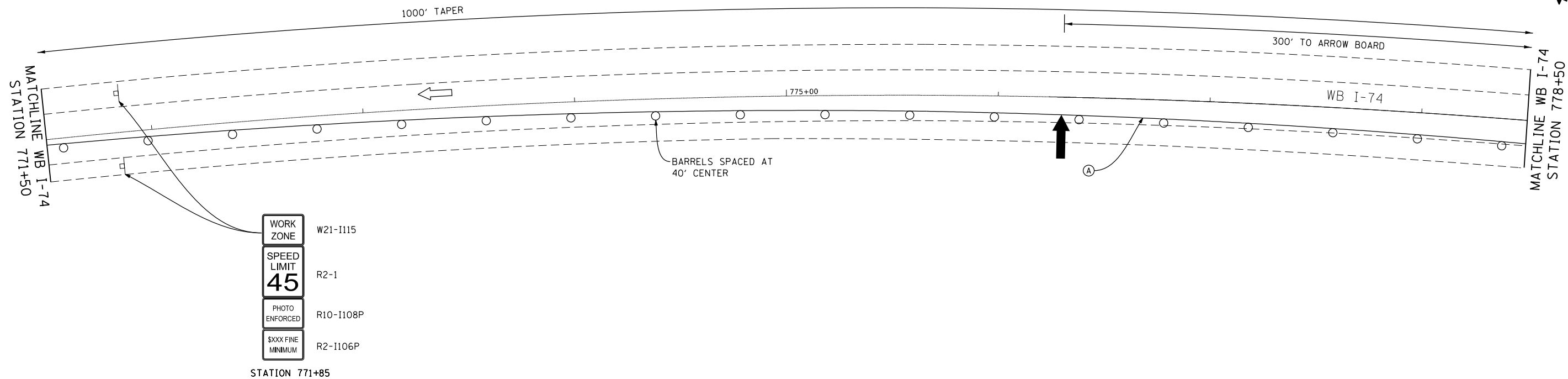
USER NAME = JSpears	DESIGNED - JS	REVISED -
DRAWN - JS	REVISIONS -	
PLOT SCALE = 50.0000' / in.	CHECKED - MM	REVISED -
PLOT DATE = 1/15/2018	DATE -	REVISED -

**STATE OF ILLINOIS
 DEPARTMENT OF TRANSPORTATION**

**MAINTENANCE OF TRAFFIC
 STAGE 2 PLAN**

SHEET 2 OF 3 SHEETS STA. 757+50 TO STA. 771+50

F.A.J. RTE.	SECTION	COUNTY	TOTAL SHEETS	SHEET NO.
74	D2 BJR 2018-1	HENRY	15	6
CONTRACT NO. 64M62				
ILLINOIS FED. AID PROJECT				



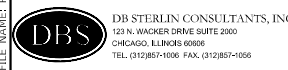
STAGE 2 MAINTENANCE OF TRAFFIC – SUMMARY OF QUANTITIES

PAY ITEM	DESCRIPTION	UNIT	QUANTITY
70100205	TRAFFIC CONTROL AND PROTECTION, STANDARD 701401	EACH	0.5
70100207	TRAFFIC CONTROL AND PROTECTION, STANDARD 701402	EACH	0.5
70107005	PAVEMENT MARKING BLACKOUT TAPE, 5"	FOOT	764
70300150	SHORT TERM PAVEMENT MARKING REMOVAL	SQ FT	319
70300520	PAVEMENT MARKING TAPE, TYPE III 4"	FOOT	4599
X7030005	TEMPORARY PAVEMENT MARKING REMOVAL	SQ FT	1533
70400100	TEMPORARY CONCRETE BARRIER	FOOT	-
70400200	RELOCATION TEMPORARY CONCRETE BARRIER	FOOT	825
70600250	IMPACT ATTENUATORS, TEMPORARY (NON-REDIRECTIVE), TEST LEVEL 3	EACH	-
70600350	IMPACT ATTENUATORS, RELOCATE (NON-REDIRECTIVE), TEST LEVEL 3	EACH	2

LEGEND

- WORK ZONE
- TEMPORARY CONCRETE BARRIER WALL
- TEMPORARY PAVEMENT MARKING
- DRUM WITH STEADY BURNING BI-DIRECTIONAL LIGHT
- TYPE III BARRICADE
- ARROW BOARD
- IMPACT ATTENUATOR TEST LEVEL 3
- TRAFFIC DIRECTION
- PAVEMENT MARKING TAPE, TYPE III 4"
- PAVEMENT MARKING BLACKOUT TAPE, 4"
- TEMPORARY TRAFFIC SIGN

MODEL: D:\d4\11...
 FILE NAME: P:\02535000\515_06_174_ over Morgan...
 C:\Users\morgans\Documents\Creek\CADD_Sheet\02535006-ent-MOT-Stage2.dgn



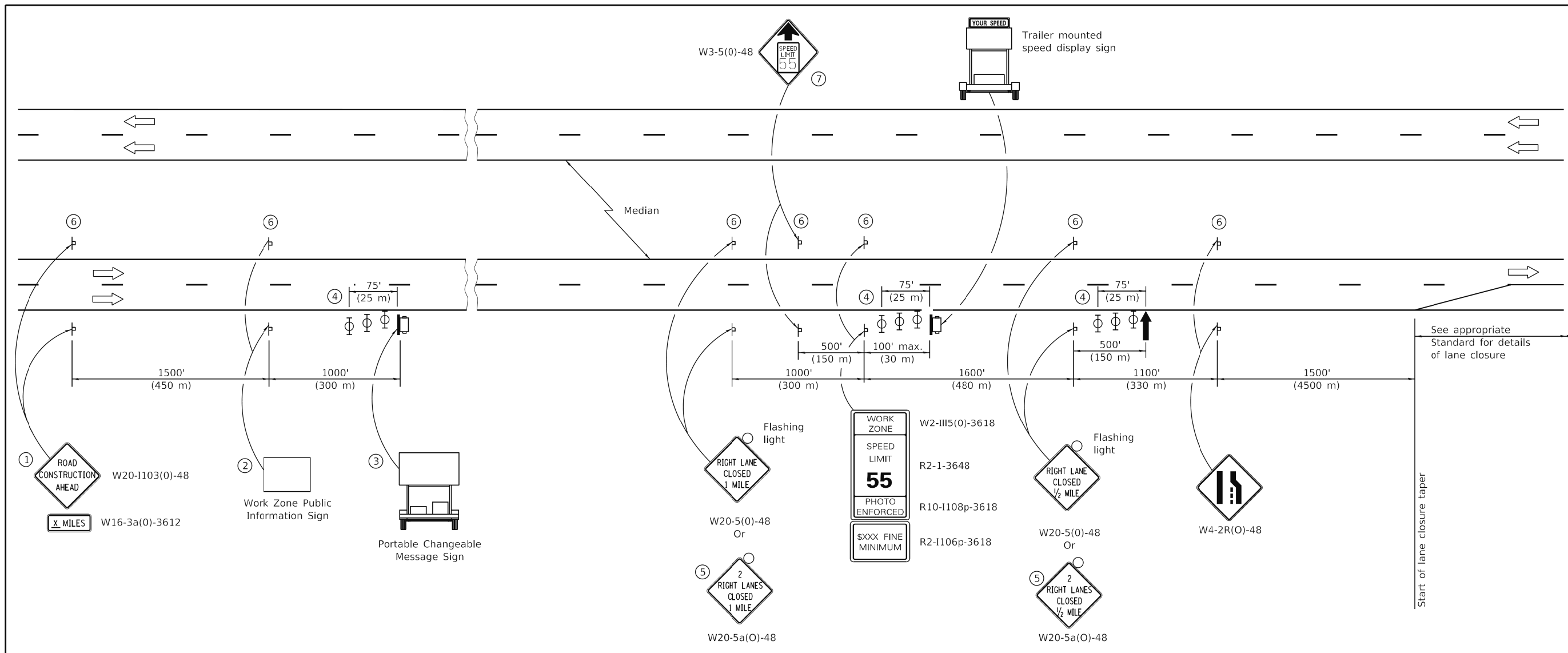
USER NAME = JSpears	DESIGNED - JS	REVISED -
PLOT SCALE = 50.0000 ' / in.	DRAWN - JS	REVISED -
PLOT DATE = 1/15/2018	CHECKED - MM	REVISED -
	DATE -	REVISED -

STATE OF ILLINOIS
DEPARTMENT OF TRANSPORTATION

MAINTENANCE OF TRAFFIC
STAGE 2 PLAN

SHEET 3 OF 3 SHEETS STA. 771+50 TO STA. 779+30

F.A.J. RTE.	SECTION	COUNTY	TOTAL SHEETS	SHEET NO.
74	D2 BJR 2018-1	HENRY	15	7
ILLINOIS FED. AID PROJECT			CONTRACT NO. 64M62	



SYMBOLS

- ↑ Arrow board
- ☐ Trailer mounted sign
- ⌄ Sign
- ⊕ Type II barricade, drum, or vertical barricade with monodirectional flashing light

- ① The Road Construction Ahead sign shall be located 3 to 5 miles in advance of the project limits.
- ② The message and size of the Work Zone Public Information Sign shall be as specified by the Department.
- ③ The message board shall be used to display status of lanes within the project. The primary messages shall be:
"Right Lane Closed" / " x Miles Ahead"
"Left Lane Closed" / " x Miles Ahead"
"All Lanes Open"
- ④ Three, Type II barricades, drums, or vertical barricades at 25' (8 m) centers.
- ⑤ This sign shall be used when 2 lanes are closed.
- ⑥ This sign shall be omitted when median width is less than 10' (3 m).
- ⑦ This sign shall only be used if the existing speed limit is greater than 65 mph.

GENERAL NOTES

This standard is used where at any time a lane is closed on a freeway/expressway. When the left lane is closed, LEFT LANE CLOSED signs shall be substituted for the RIGHT LANE CLOSED signs.

The first two signs and the message board are stationary.

The last four signs and arrow board shall be moved as necessary to maintain the required distance from the start of the lane closure taper(s).

All dimensions are in inches (millimeters) unless otherwise shown.

Illinois Department of Transportation

PASSED January 1, 2017
Paul Lore
 ENGINEER OF SAFETY PROG. AND ENGINEERING

APPROVED January 1, 2017
Walter M. Adams
 ENGINEER OF DESIGN AND ENVIRONMENT

ISSUED 4-1-04

DATE	REVISIONS
1-1-17	Added trailer mounted speed display sign. Changed device spacing and note ④.
1-1-15	Revised '2 RIGHT LANES CLOSED X MILE' sign number.

**APPROACH TO
LANE CLOSURE,
FREEWAY/EXPRESSWAY**

STANDARD 701400-09

MODEL: D:\dtd\11... FILE NAME: P:\02535000\515_06_174_ over Mozauro Creek\CADD_Sheets\02535006-ait-Standard.dgn

DBS
 DB STERLIN CONSULTANTS, INC.
 100 N. WICKER DRIVE SUITE 2000
 CHICAGO, ILLINOIS 60606
 TEL. (312)857-1000 FAX. (312)857-1056

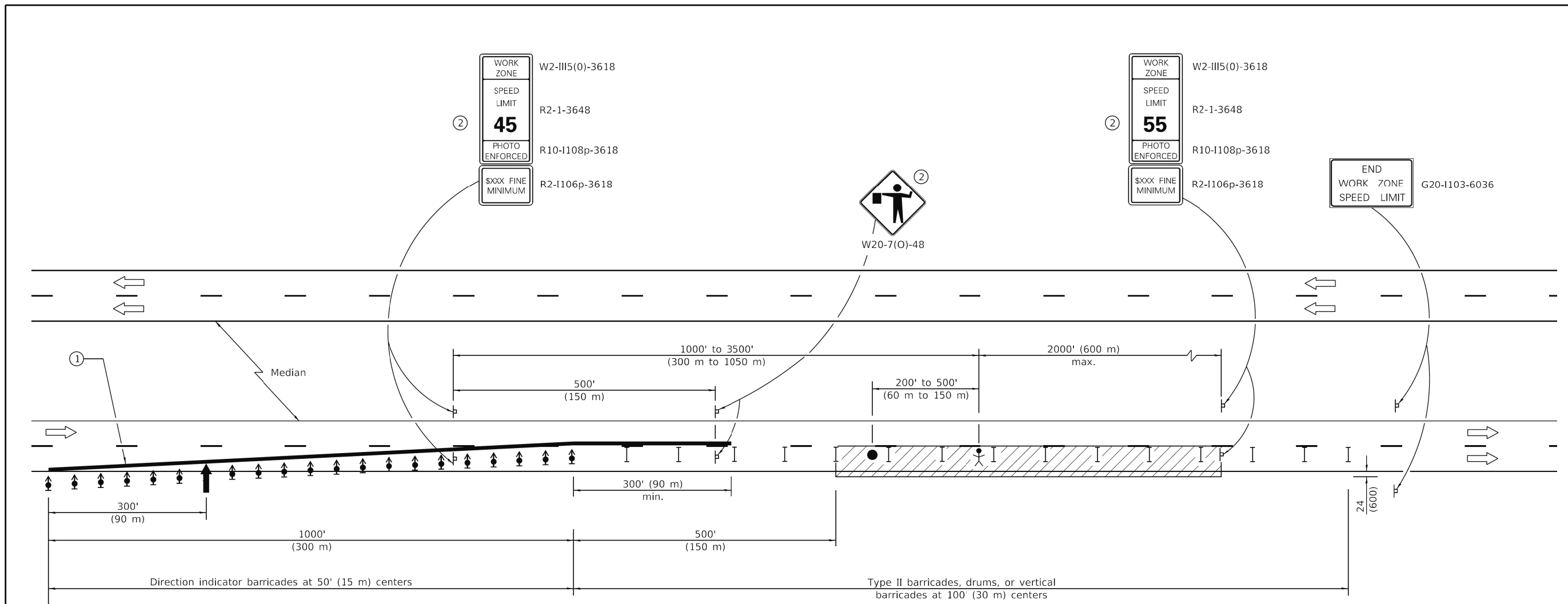
USER NAME = JSpears	DESIGNED - JS	REVISED -
DRAWN - JS	DRAWN - JS	REVISED -
CHECKED - MM	CHECKED - MM	REVISED -
DATE - 1/15/2018	DATE -	REVISED -

**STATE OF ILLINOIS
DEPARTMENT OF TRANSPORTATION**

STANDARDS

SHEET 1 OF 8 SHEETS

F.A.J. RTE.	SECTION	COUNTY	TOTAL SHEETS	SHEET NO.
74	D2 BJR 2018-1	HENRY	15	8
CONTRACT NO. 64M62				
ILLINOIS FED. AID PROJECT				



SYMBOLS

- Arrow board
- Work area
- Worker
- Sign
- Direction indicator barricade with steady burn monodirectional light
- Type II barricade, drum, or vertical barricade
- Flagger with traffic control sign

- ① ReflectORIZED temporary pavement marking tape shall be placed throughout the taper and for 300' (90 m) along-side the work area when the closure time is greater than fourteen days. The edge line shall be white for right lane closure and yellow for left lane closures.
- ② Work Zone speed limit signs and FLAGGER signs shall be moved as necessary to maintain the required spacing between the signs and the workers in each separate work activity. Work Zone Speed Limit 55 Photo Enforced sign shall be omitted when the work area dictates placement of the sign array within 500' (150 m) of the End Work Zone Speed Limit Sign.

GENERAL NOTES

This Standard is used where at any time any vehicle, equipment, workers or their activities will encroach on the lane adjacent to the shoulder, or on the shoulder within 24 (600) of the edge of pavement.

This Standard must always be used in combination with Standard 701400.

This Standard also applies when work is being performed in the left lane. Under these conditions, the setup would be a mirror image to what is shown.

A check barricade shall be placed in the middle of the closed lane and at the shoulder at 1000' (300 m) centers.

All dimensions are in inches (millimeters) unless otherwise shown.

Illinois Department of Transportation

PASSED January 1, 2018

 ENGINEER OF SAFETY PROG. AND ENGINEERING

APPROVED January 1, 2018

 ENGINEER OF DESIGN AND ENVIRONMENT

ISSUED 1-1-97

DATE	REVISIONS
1-1-18	Omitted lights in tangent.
1-1-17	Revised END WORK ZONE SPEED LIMIT sign from orange to white background.

**LANE CLOSURE,
FREEWAY / EXPRESSWAY**

STANDARD 701401-11

MODEL: D:\dft\it... FILE NAME: P:\02535-000\535_06_174_ over Mozauro_Creek\CADD_Sheets\02535306-sh-Standard.dgn

DBS DB STERLIN CONSULTANTS, INC.
 100 N. WICKER DRIVE SUITE 2000
 CHICAGO, ILLINOIS 60606
 TEL. (312)857-1000 FAX. (312)857-1056

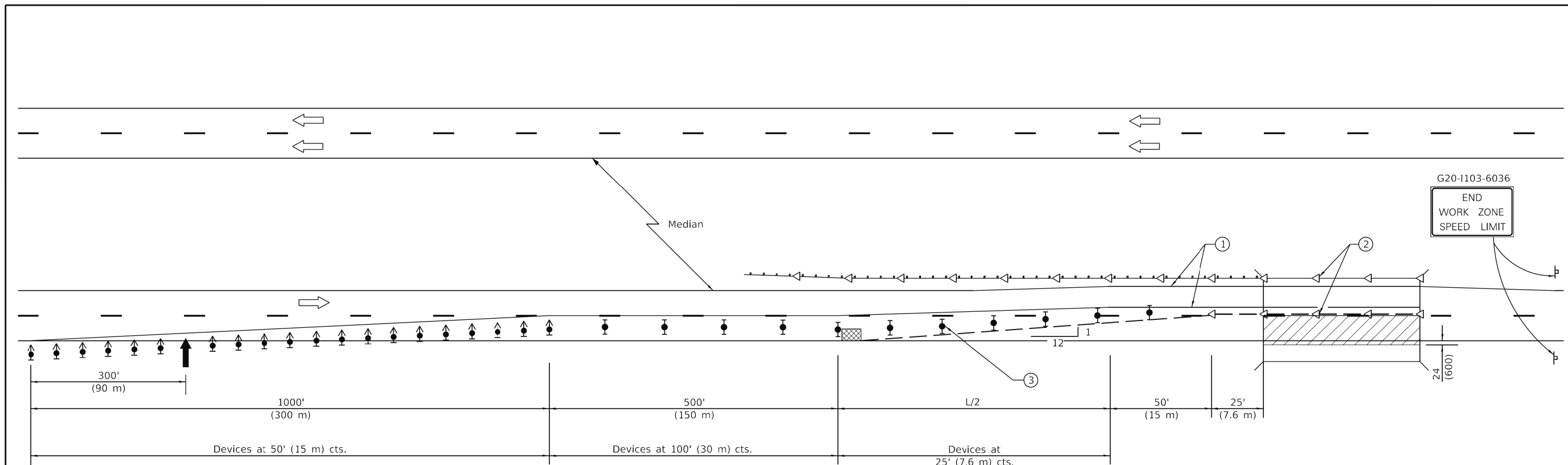
USER NAME = JSpears	DESIGNED - JS	REVISED -
PLOT SCALE =	DRAWN - JS	REVISED -
PLOT DATE = 1/15/2018	CHECKED - MM	REVISED -
	DATE -	REVISED -

**STATE OF ILLINOIS
DEPARTMENT OF TRANSPORTATION**

STANDARDS

SHEET 2 OF 8 SHEETS

F.A.J. RTE.	SECTION	COUNTY	TOTAL SHEETS	SHEET NO.
74	D2 BJR 2018-1	HENRY	15	9
CONTRACT NO. 64M62				
ILLINOIS FED. AID PROJECT				



See Standard 701400 for approach
Start of lane closure taper

SYMBOLS

- Arrow board
- Work area
- Sign
- Direction indicator barricade with steady burn monodirectional light
- Type II barricade, drum, or vertical barricade with steady burn monodirectional light
- Temporary concrete barrier
- Monodirectional guardrail/barrier wall reflector
- Impact attenuator

- ① Temporary pavement marking tape shall be placed throughout the taper and along-side the work area. The right edge line shall be white and the left edge line shall be yellow.
- ② Guardrail/barrier wall reflectors at 25' (7.6 m). Markers on right shall be shall be crystal and markers on left shall be amber. See Standards 704001 and 782006.
- ③ Vertical barricades shall not be used in lane shift taper.

GENERAL NOTES

This standard is used where at any time any vehicle, equipment, workers or their activities will encroach on the pavement or on the shoulder within 24 (600) of the edge of pavement for daylight operation exceeding one day and where temporary concrete barrier is utilized.

This Standard must always be used in combination with Standard 701400.

When work is being performed in the left lane, the set up would be a mirror image to what is shown.

Temporary concrete barrier shall be according to Standard 704001.

Calculate L as follows:

NORMAL POSTED SPEED	FORMULAS	
	English L=(W)(S)	(Metric) L=0.65(W)(S)
45 mph (80 km/h) or more		

W = Width of offset in feet (meters).

S = Normal posted speed in mph (km/h).

All dimensions are in inches (millimeters) unless otherwise shown.

Illinois Department of Transportation

PASSED January 1, 2017
Paul Lore
ENGINEER OF SAFETY PROG. AND ENGINEERING

APPROVED January 1, 2017
Walter M. Adams
ENGINEER OF DESIGN AND ENVIRONMENT

ISSUED 1-1-00

DATE	REVISIONS
1-1-17	Revised END WORK ZONE SPEED LIMIT sign from orange to white background.
4-1-16	Added reference to Standards 704001 and 782006 in note (2).

**LANE CLOSURE,
FREEWAY/EXPRESSWAY,
WITH BARRIER**

STANDARD 701402-12

MODEL: D:\dft\it... FILE NAME: P:\0235\000135_06_174... over: Magzouto_Creek\CADD_Sheets\02353506-sh-Standard.dgn

DBS DB STERLIN CONSULTANTS, INC.
100 N. WICKER DRIVE SUITE 2000
CHICAGO, ILLINOIS 60606
TEL. (312)857-1000 FAX. (312)857-1056

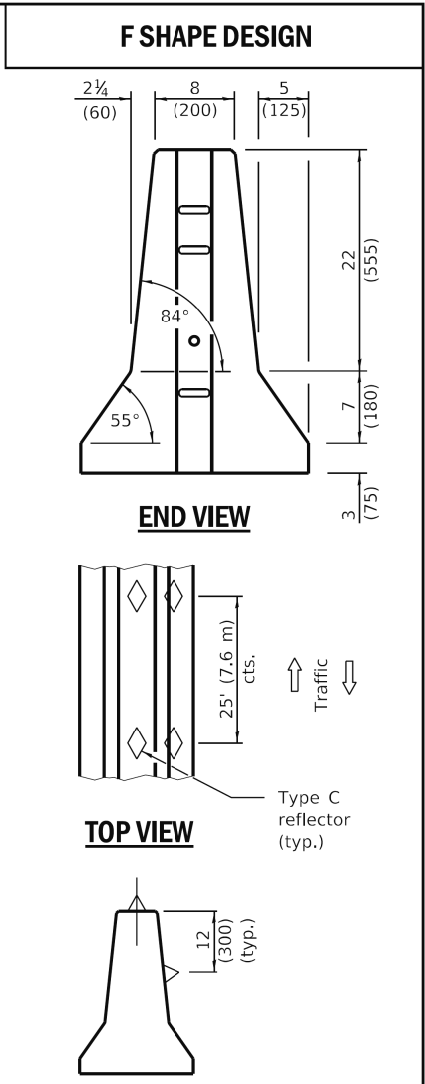
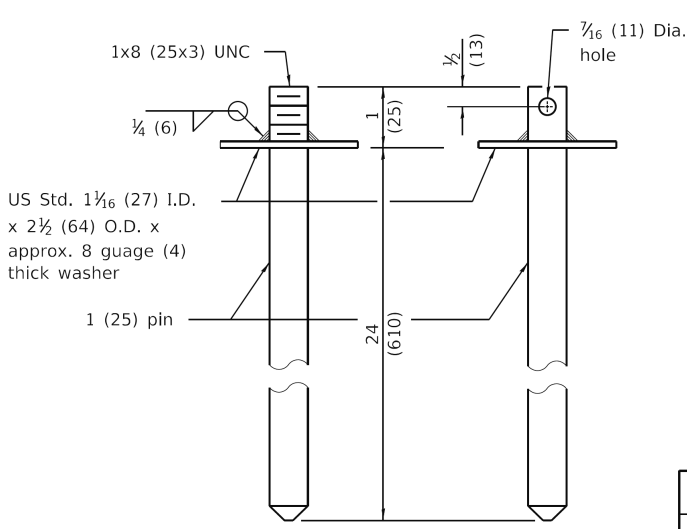
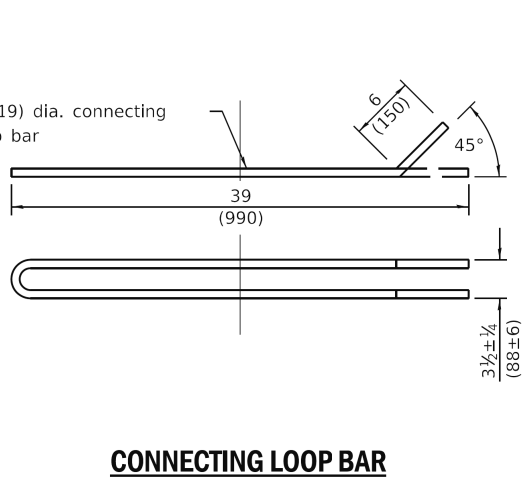
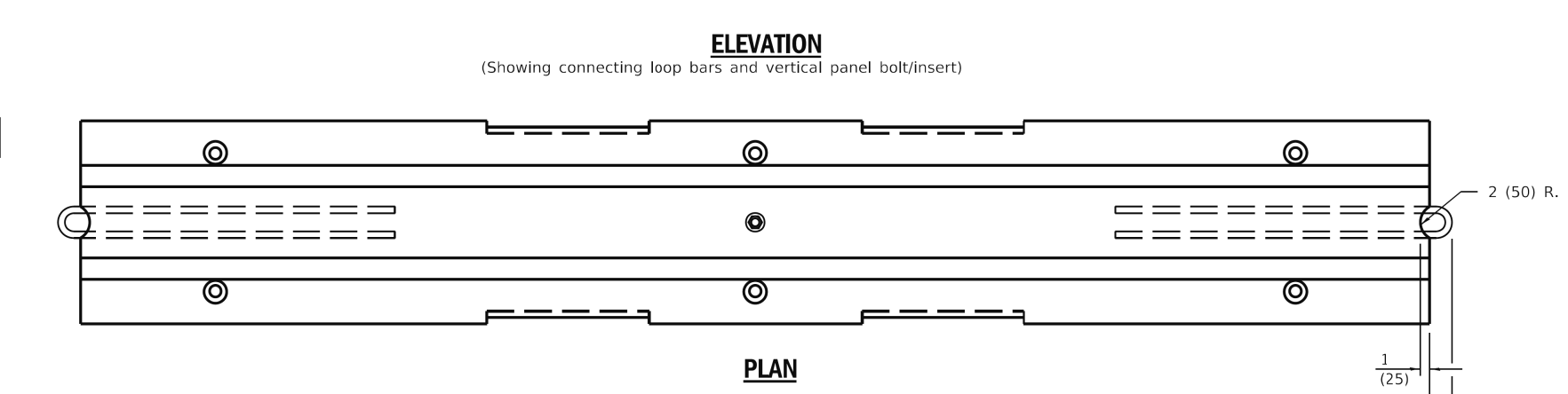
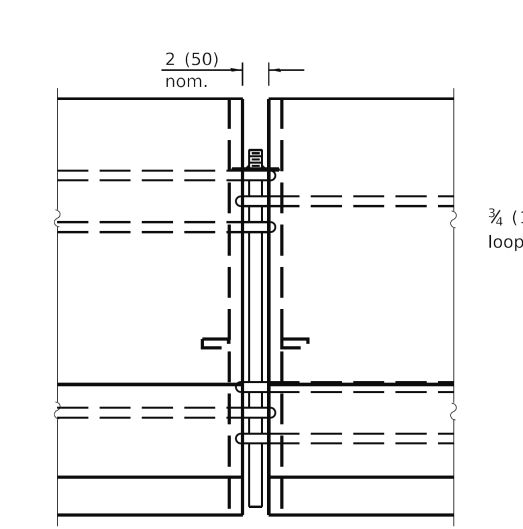
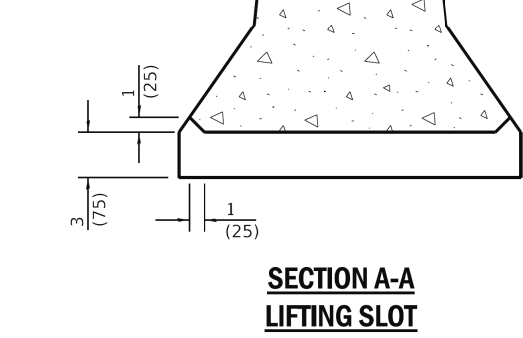
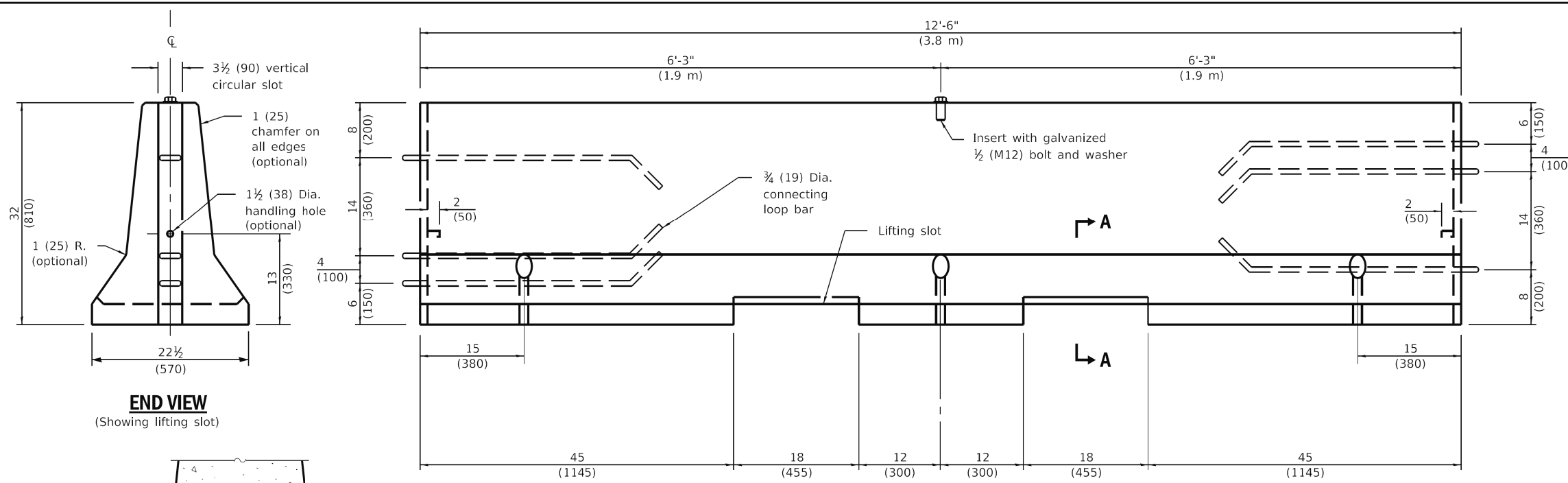
USER NAME = JSpears	DESIGNED - JS	REVISED -
PLOT SCALE =	DRAWN - JS	REVISED -
PLOT DATE = 1/15/2018	CHECKED - MM	REVISED -
	DATE -	REVISED -

**STATE OF ILLINOIS
DEPARTMENT OF TRANSPORTATION**

STANDARDS

SHEET 3 OF 8 SHEETS

F.A.J. RTE.	SECTION	COUNTY	TOTAL SHEETS	SHEET NO.
74	D2 BJR 2018-1	HENRY	15	10
ILLINOIS FED. AID PROJECT			CONTRACT NO. 64M62	



2 1/2 (63) measured from face of barrier to end of loop bar

GENERAL NOTES

Each F shape barrier shall be clearly marked with "ILLINOIS F SHAPE", the Producer's mark and the date of manufacture. The markings shall be indented on the barrier or painted thereon with waterproof paint/ink.

The insert for the 1/2 (M12) bolt shall be capable of 3,000 lb (13 kN) pull-out strength.

When barrier separates opposing flows of traffic markers shall be on both sides of barrier.

See Standard 782006 for dimensions of Type C reflector.

All dimensions are in inches (millimeters) unless otherwise shown.

DATE	REVISIONS
4-1-16	Rev. opt. chamfer on all edges to 1 (25). Reference to Std. 635011 now 782006.
1-1-12	Omitted 'ALTERNATE' from connecting and anchoring pins detail.

TEMPORARY CONCRETE BARRIER
(Sheet 1 of 2)

STANDARD 704001-08

Illinois Department of Transportation

PASSED April 1, 2016
Michael Beard
ENGINEER OF POLICY AND PROCEDURES

APPROVED April 1, 2016
[Signature]
ENGINEER OF DESIGN AND ENVIRONMENT

ISSUED 10-1-02

MODEL: D:\dft\it... FILE NAME: P:\02535000\515_06_174_over_Mozauto_Creek\CADD_Sheets\02535006-sh-Standard.dgn

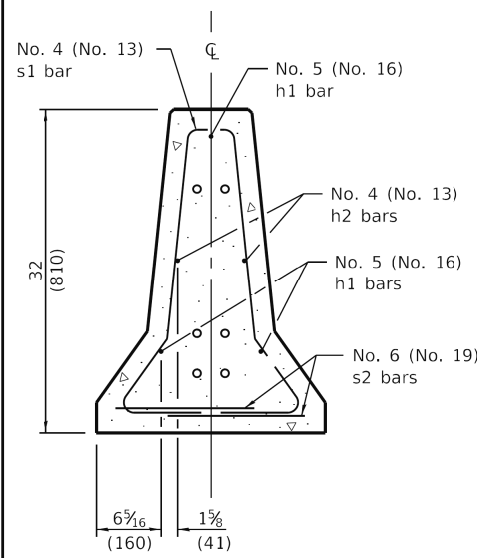
DBS DB STERLIN CONSULTANTS, INC.
100 N. WILCOX DRIVE SUITE 2000
CHICAGO, ILLINOIS 60606
TEL. (312)857-1000 FAX. (312)857-1055

USER NAME = JSpears	DESIGNED - JS	REVISED -
PLOT SCALE =	DRAWN - JS	REVISED -
PLOT DATE = 1/15/2018	CHECKED - MM	REVISED -
	DATE -	REVISED -

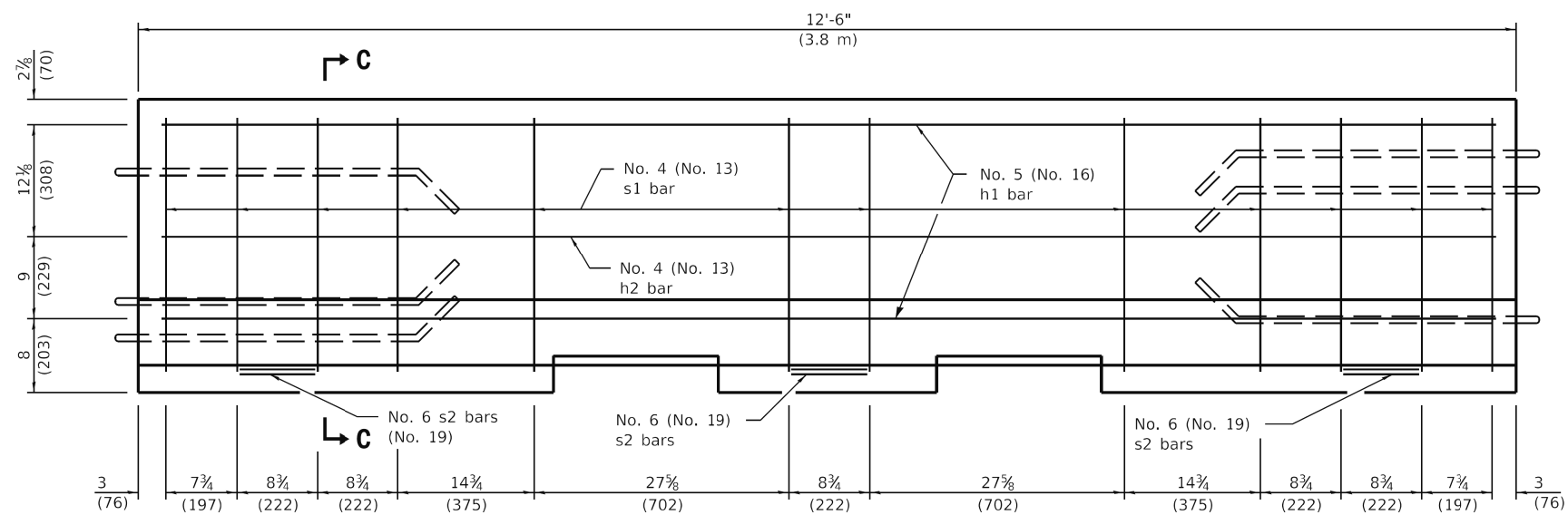
STATE OF ILLINOIS
DEPARTMENT OF TRANSPORTATION

STANDARDS
SHEET 4 OF 8 SHEETS

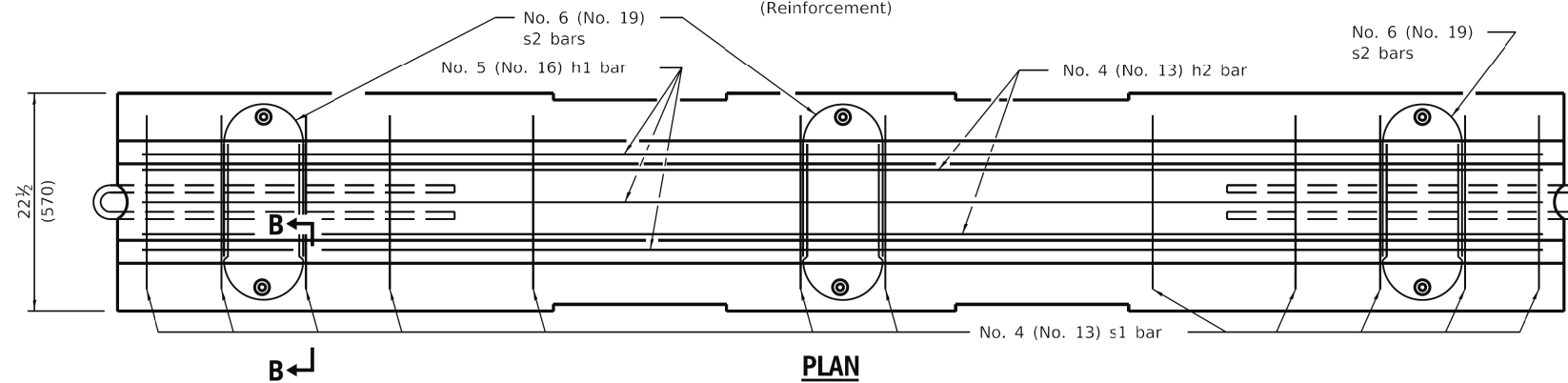
F.A.J. RTE.	SECTION	COUNTY	TOTAL SHEETS	SHEET NO.
74	D2 BJR 2018-1	HENRY	15	11
CONTRACT NO. 64M62				
ILLINOIS FED. AID PROJECT				



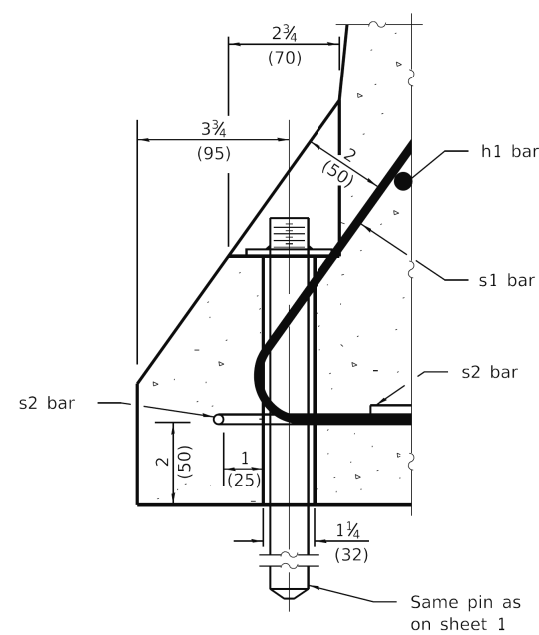
SECTION C-C



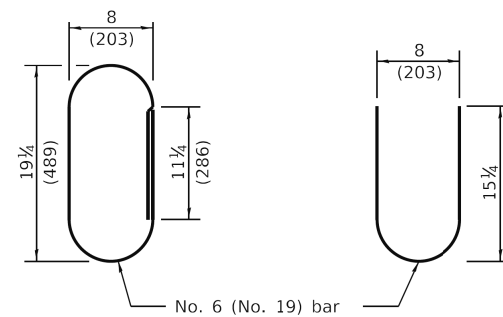
ELEVATION
(Reinforcement)



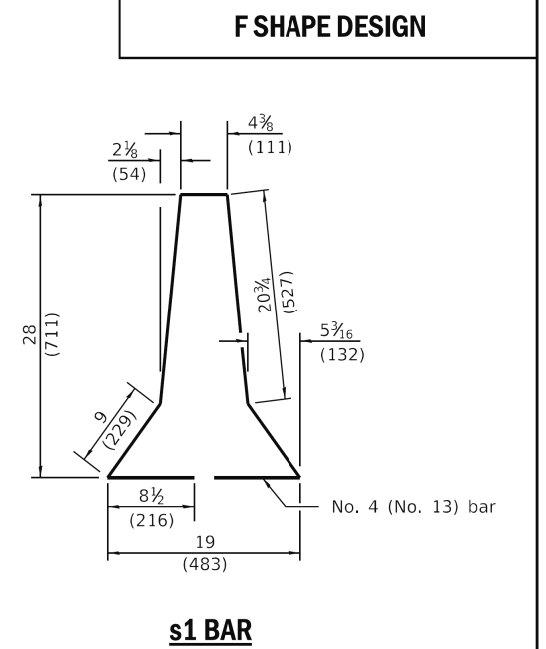
PLAN



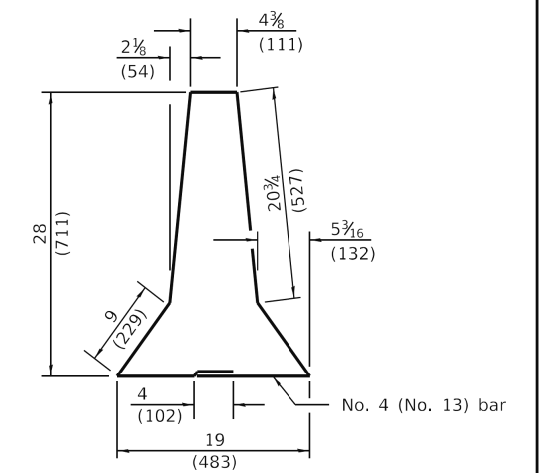
SECTION B-B
ANCHORING DETAIL



ALTERNATE s2 BARS



s1 BAR



ALTERNATE s1 BAR

TEMPORARY CONCRETE BARRIER

(Sheet 2 of 2)

STANDARD 704001-08

Illinois Department of Transportation

PASSED April 1, 2016
Michael Beard
ENGINEER OF POLICY AND PROCEDURES

APPROVED April 1, 2016
[Signature]
ENGINEER OF DESIGN AND ENVIRONMENT

ISSUED 10-1-02

STATE OF ILLINOIS
DEPARTMENT OF TRANSPORTATION

STANDARDS

SHEET 5 OF 8 SHEETS

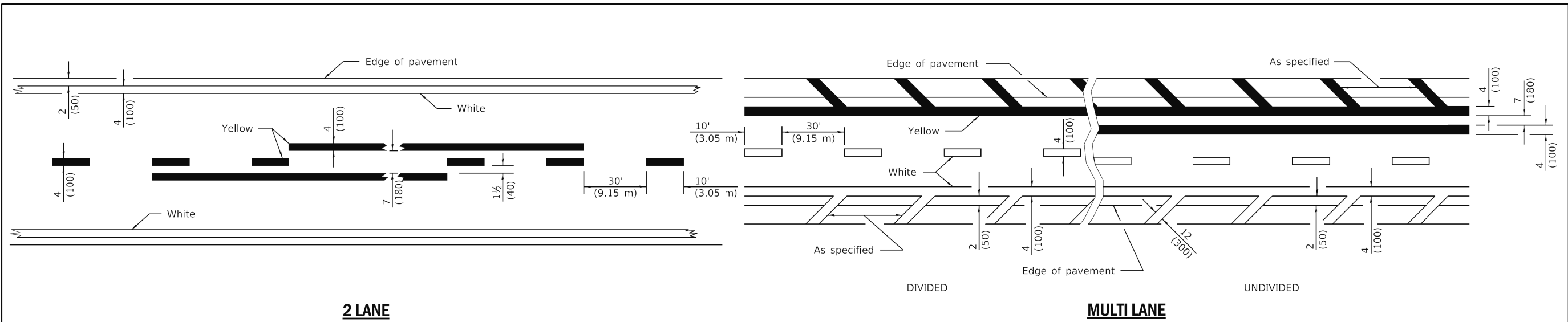
F.A.J. RTE.	SECTION	COUNTY	TOTAL SHEETS	SHEET NO.
74	D2 BJR 2018-1	HENRY	15	12
CONTRACT NO. 64M62				

ILLINOIS FED. AID PROJECT

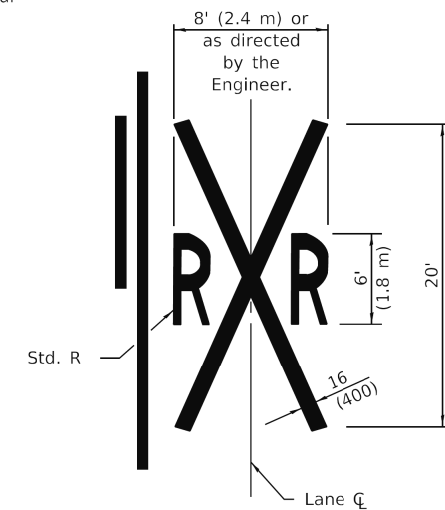
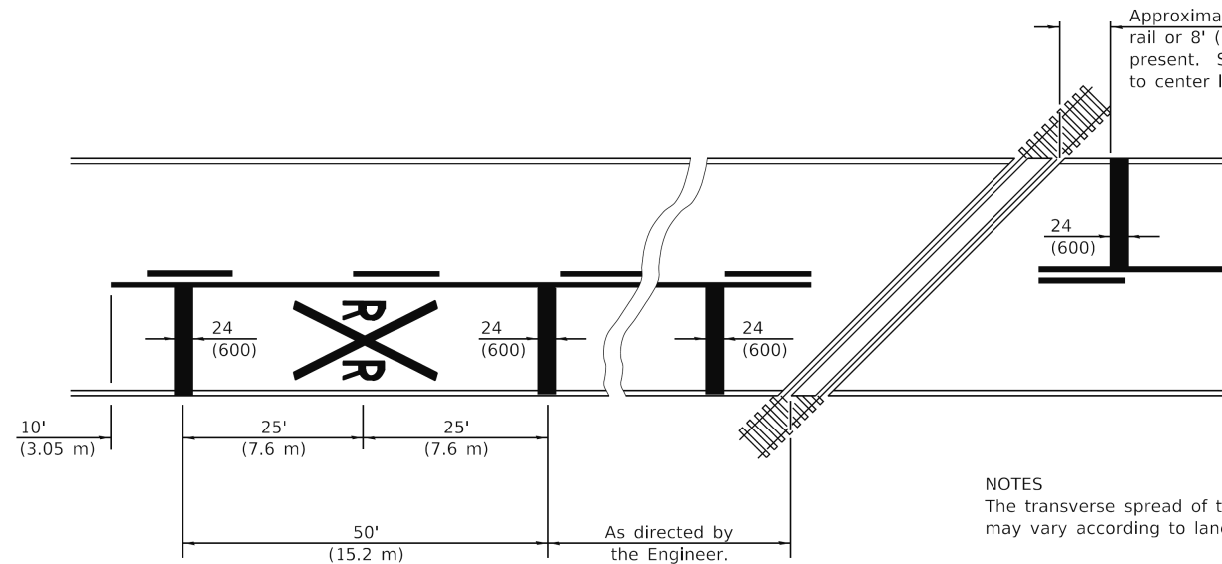
MODEL: D:\dft\it...
FILE NAME: P:\02535000\535_08_174 over Mozauro Creek\CADD_Sheets\02535006-ent-Standard.dgn

DBS DB STERLIN CONSULTANTS, INC.
100 N. WICKER DRIVE SUITE 2000
CHICAGO, ILLINOIS 60606
TEL: (312)857-1000 FAX: (312)857-1055

USER NAME = JSpears	DESIGNED - JS	REVISED -
PLOT SCALE =	DRAWN - JS	REVISED -
PLOT DATE = 1/15/2018	CHECKED - MM	REVISED -
	DATE -	REVISED -



LANE AND EDGE LINES



NOTES
The transverse spread of the "X" may vary according to lane width.

On multi-lane roads, the stop lines shall extend across all approach lanes and separate RRX symbols shall be placed adjacent to each other in each lane.

When the pavement marking symbol is used, a portion of the symbol should be located directly adjacent to the Advance Warning Sign (W10-1) as placed by Table 2C-4, Condition B of the MUTCD.

All dimensions are in inches (millimeters) unless otherwise shown.

PAVEMENT MARKINGS AT RAILROAD-HIGHWAY GRADE CROSSING

DATE	REVISIONS
1-1-15	Added symbols. Revised bike symbol. Revised note for stop line at RR crossing.
1-1-14	Added bike symbol. Renamed 'LANE DROP ARROW' detail to 'LANE-REDUCTION ARROW'.

TYPICAL PAVEMENT MARKINGS
(Sheet 1 of 3)

STANDARD 780001-05

Illinois Department of Transportation

PASSED January 1, 2015
ENGINEER OF OPERATIONS

APPROVED January 1, 2015
ENGINEER OF DESIGN AND ENVIRONMENT

ISSUED 1-1-97

STATE OF ILLINOIS
DEPARTMENT OF TRANSPORTATION

STANDARDS

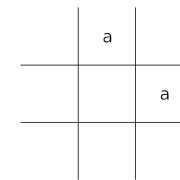
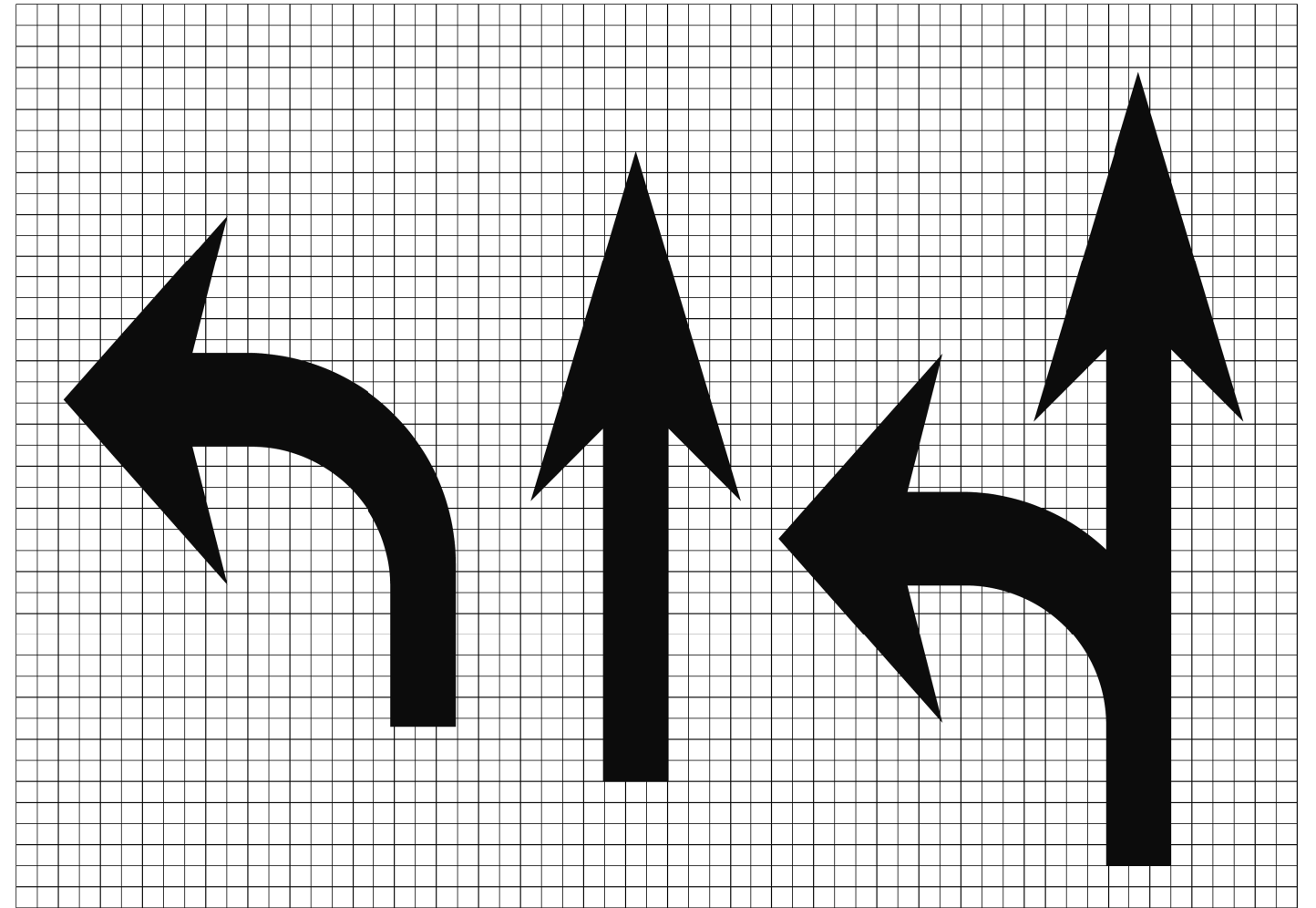
SHEET 6 OF 8 SHEETS

F.A.J. RTE.	SECTION	COUNTY	TOTAL SHEETS	SHEET NO.
74	D2 BJR 2018-1	HENRY	15	13
				CONTRACT NO. 64M62
ILLINOIS FED. AID PROJECT				

MODEL: D:\dft\it...
FILE NAME: P:\0235\000135_06_174 over Mozauro Creek\CADD_Sheets\02353506-ait-Standard.dgn

DBS
DB STERLIN CONSULTANTS, INC.
100 N. WILSON DRIVE SUITE 2000
CHICAGO, ILLINOIS 60606
TEL. (312)857-1000 FAX. (312)857-1055

USER NAME = JSpears	DESIGNED - JS	REVISED -
PLOT SCALE =	DRAWN - JS	REVISED -
PLOT DATE = 1/15/2018	CHECKED - MM	REVISED -
	DATE -	REVISED -



Legend Height	Arrow Size	a
6' (1.8 m)	Small	2.9 (74)
8' (2.4 m)	Large	3.8 (96)

The space between adjacent letters or numerals should be approximately 3 (75) for 6' (1.8 m) legend and 4 (100) for 8' (2.4 m) legend.

LETTER AND ARROW GRID SCALE

Illinois Department of Transportation
 PASSED January 1, 2015
Janey Allen
 ENGINEER OF OPERATIONS
 APPROVED January 1, 2015
DR
 ENGINEER OF DESIGN AND ENVIRONMENT
 ISSUED 1-1-97

TYPICAL PAVEMENT MARKINGS
 (Sheet 2 of 3)
STANDARD 780001-05

MODEL: D:\p\it...
 FILE NAME: P:\0355\000515_06_174 over Mozauro Creek\CADD_Sheets\0253506-ait-Standard.dgn

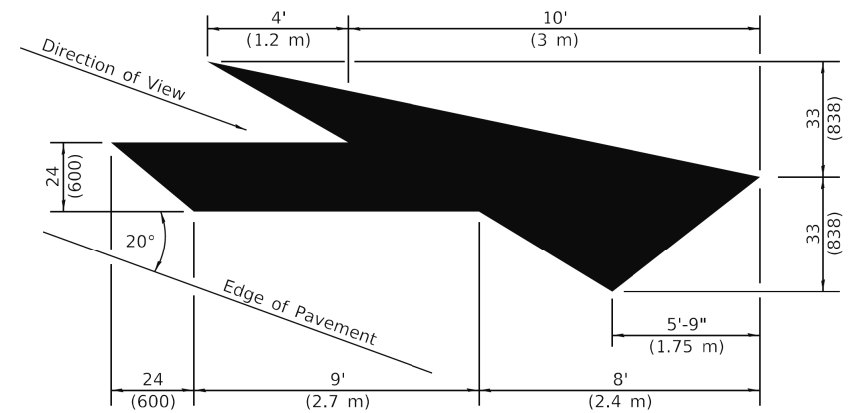
DB STERLIN CONSULTANTS, INC.
 100 N. WICKER DRIVE SUITE 2000
 CHICAGO, ILLINOIS 60606
 TEL. (312)857-1000 FAX. (312)857-1056

USER NAME = JSpears	DESIGNED - JS	REVISED -
PLOT SCALE =	DRAWN - JS	REVISED -
PLOT DATE = 1/15/2018	CHECKED - MM	REVISED -
	DATE -	REVISED -

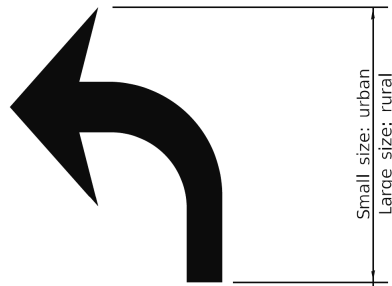
STATE OF ILLINOIS
 DEPARTMENT OF TRANSPORTATION

STANDARDS
 SHEET 7 OF 8 SHEETS

F.A.J. RTE.	SECTION	COUNTY	TOTAL SHEETS	SHEET NO.
74	D2 BJR 2018-1	HENRY	15	14
CONTRACT NO. 64M62				
ILLINOIS FED. AID PROJECT				



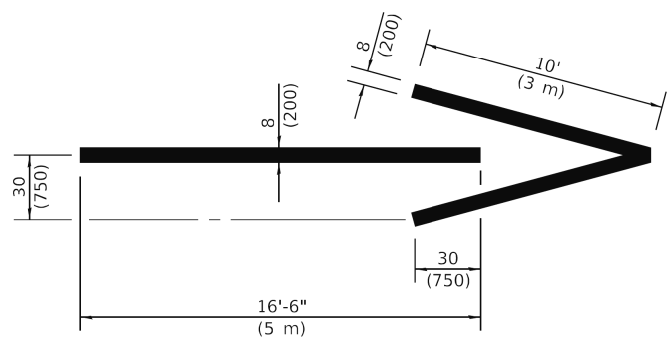
LANE-REDUCTION ARROW
 Right lane-reduction arrow shown.
 Use mirror image for left lane.



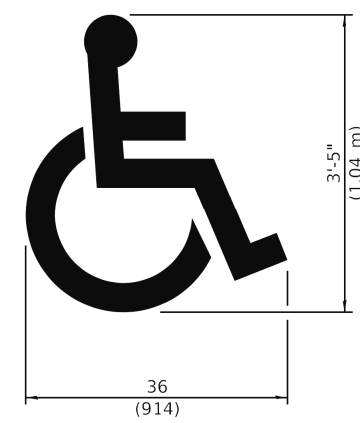
20' (6 m): urban
 50' (15 m): rural
 (Between arrow
 and word or
 between words)



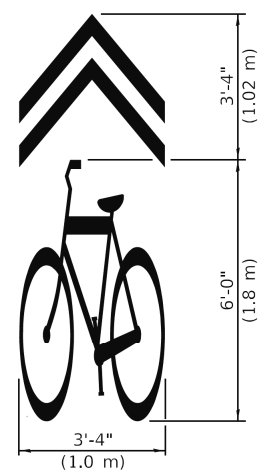
WORD AND ARROW LAYOUT



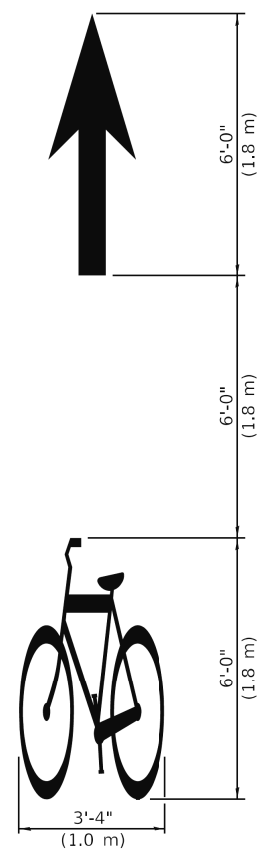
WRONG WAY ARROW



**INTERNATIONAL
 SYMBOL OF
 ACCESSIBILITY**



**SHARED LANE
 SYMBOL**



BIKE SYMBOL
 (Arrow is optional.)

Illinois Department of Transportation

PASSED January 1, 2015
James Allen
 ENGINEER OF OPERATIONS

APPROVED January 1, 2015
DR
 ENGINEER OF DESIGN AND ENVIRONMENT

ISSUED 1-1-97

TYPICAL PAVEMENT MARKINGS
 (Sheet 3 of 3)

STANDARD 780001-05

MODEL: D:\dft\it...
 FILE NAME: P:\0235\000135_08_174_ over Mozauro_Creek\CADD_Sheets\0235306-sh-Standard.dgn

DBS
 DB STERLIN CONSULTANTS, INC.
 100 N. WICKER DRIVE SUITE 2000
 CHICAGO, ILLINOIS 60606
 TEL. (312)851-1000 FAX. (312)851-1056

USER NAME = JSpears	DESIGNED - JS	REVISED -
PLOT SCALE =	DRAWN - JS	REVISED -
PLOT DATE = 1/15/2018	CHECKED - MM	REVISED -
	DATE -	REVISED -

STATE OF ILLINOIS
 DEPARTMENT OF TRANSPORTATION

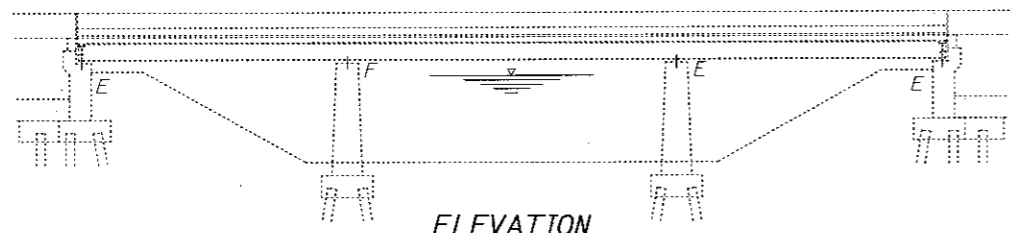
STANDARDS

SHEET 8 OF 8 SHEETS

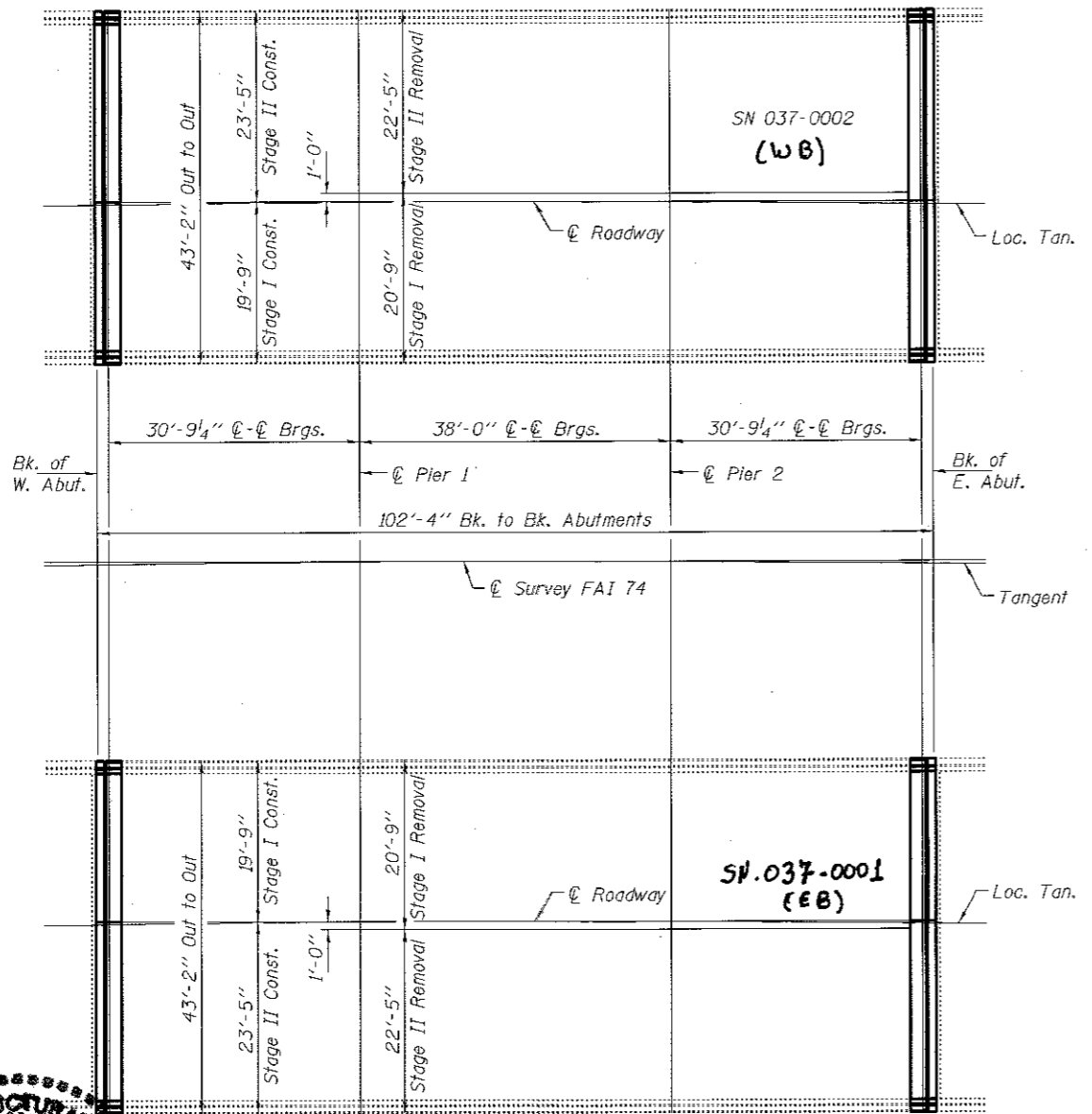
F.A.J. RTE.	SECTION	COUNTY	TOTAL SHEETS	SHEET NO.
74	D2 BJR 2018-1	HENRY	15	15
CONTRACT NO. 64M62				
ILLINOIS FED. AID PROJECT				

GENERAL NOTES

Reinforcement bars designated (E) shall be epoxy coated.
 Prior to pouring the new concrete deck, all heavy or loose rust, loose mill scale, and other loose or potentially detrimental foreign material shall be removed from the surfaces in contact with concrete. Tightly adhered paint may remain unless otherwise noted. Removal shall be accomplished by methods that will not damage the steel and the cost will be included in the pay item covering removal of the existing concrete.
 Plan dimensions and details relative to existing plans are subject to nominal construction variations. The Contractor shall field verify existing dimensions and details affecting new construction and make necessary approved adjustments prior to construction or ordering of materials. Such variations shall not be cause for additional compensation for a change in scope of the work, however, the Contractor will be paid for the quantity actually furnished at the unit price bid for the work.
 Existing reinforcement bars extending into the removal area shall be cleaned, straightened and incorporated into the new construction. Any reinforcement bars that are damaged during concrete removal shall be replaced with an approved bar splicer or anchorage system. Cost included with Concrete Removal.
 Joint openings shall be adjusted according to Article 520.04 of the Std. Specs. when the deck is poured at an ambient temperature other than 50° F.
 The deck surface shall have its final finish tined according to Article 420.09(a)(1) of the Standard Specifications. Cost included with Concrete Superstructure.



ELEVATION



PLAN



TOTAL BILL OF MATERIAL

ITEM	UNIT	QUANTITY
Concrete Removal	Cu. Yd.	24.2
Concrete Superstructure	Cu. Yd.	24.0
Preformed Joint Strip Seal	Foot	168
Reinforcement Bars, Epoxy Coated	Pound	3570
Bar Splicers	Each	64
* Protective Coat	Sq. Yd.	62.3

* On new concrete overlay only.

DESIGNED: M. Deane Dalkow
 CHECKED: Ryan Negargant
 DRAWN: baliva
 CHECKED: HLD RPN

EXAMINED: [Signature]
 PASSED: [Signature]

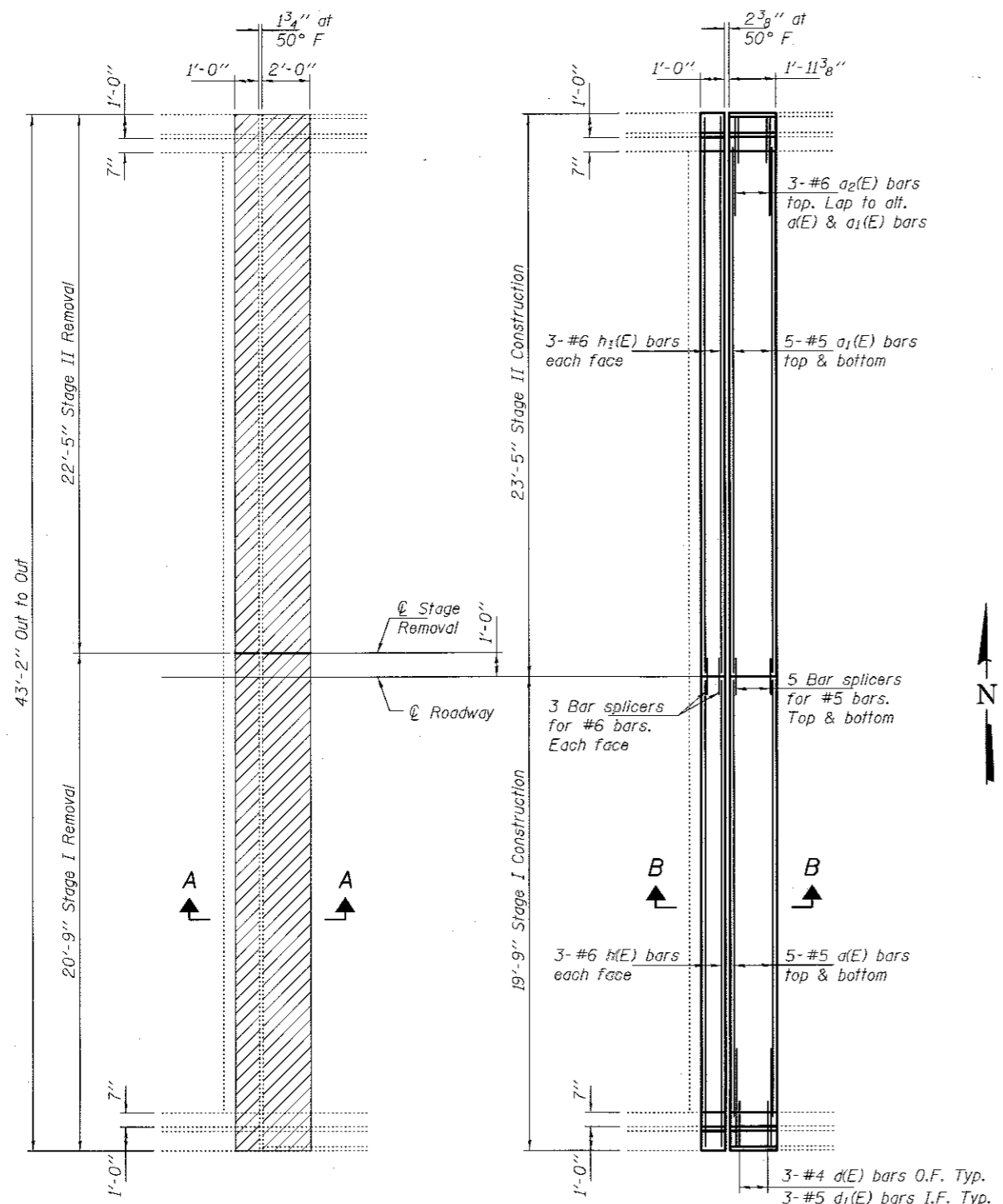
DATE: MARCH 20, 2018

REVISIONS:

STATE OF ILLINOIS
DEPARTMENT OF TRANSPORTATION

PLAN AND ELEVATION
FAI 74 & 280 OVER MOSQUITO CREEK
SN 037-0001 & 0002
 SHEET NO. 1 OF 4 SHEETS

F.A. RTE.	SECTION	COUNTY	TOTAL SHEETS	SHEET NO.
74/280	D2 BJR 2018-1	HENRY	21	18
CONTRACT NO. 64M62			ILLINOIS FED. AID PROJECT	

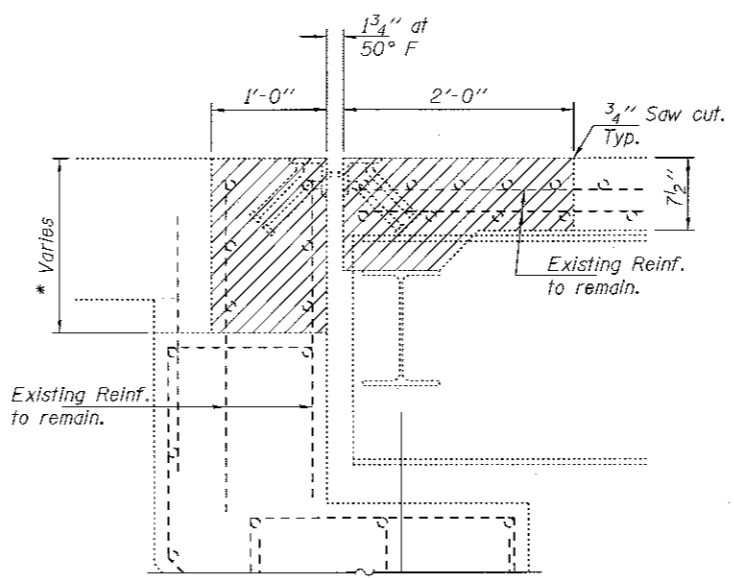


REMOVAL PLAN

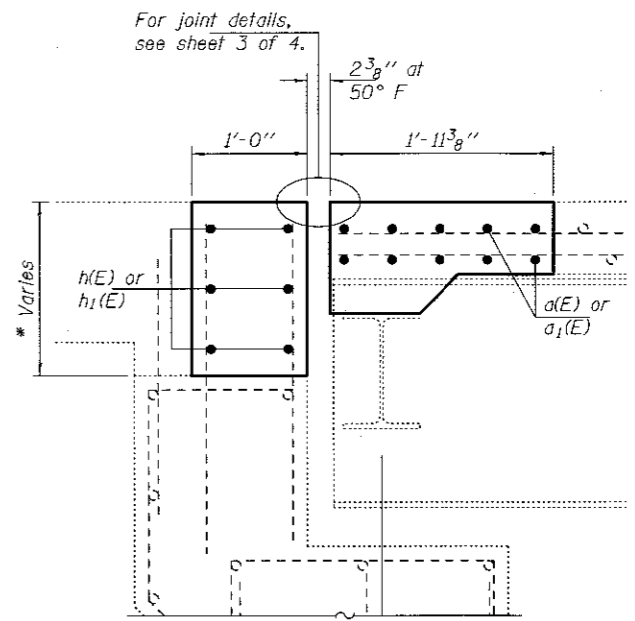
REPLACEMENT PLAN

W. Abut. SN 037-0002 looking West shown. East Abut. similar by rotation
SN 037-0001 Similar by rotation

Notes:
Hatched areas indicate removal.

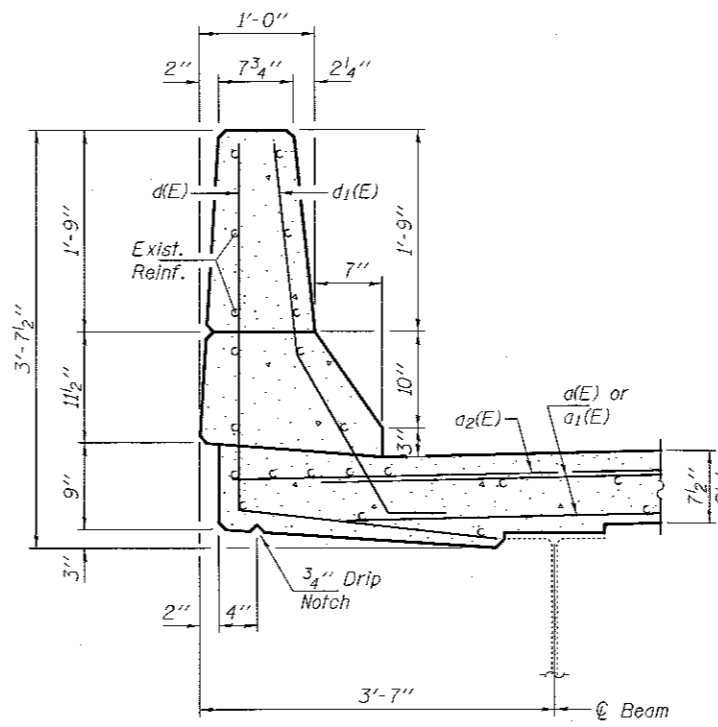


SECTION A-A

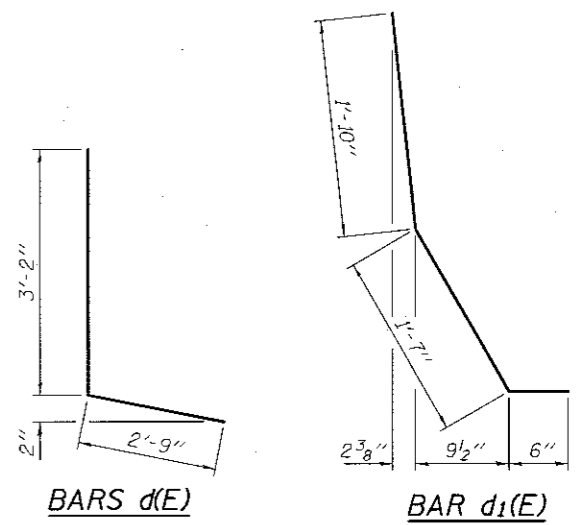


SECTION B-B

* From 1'-3 1/4" to 1'-11 3/8" W. B.
From 1'-2 3/8" to 1'-10 1/2" E. B.



TYPICAL SECTION THRU BRIDGE PARAPET

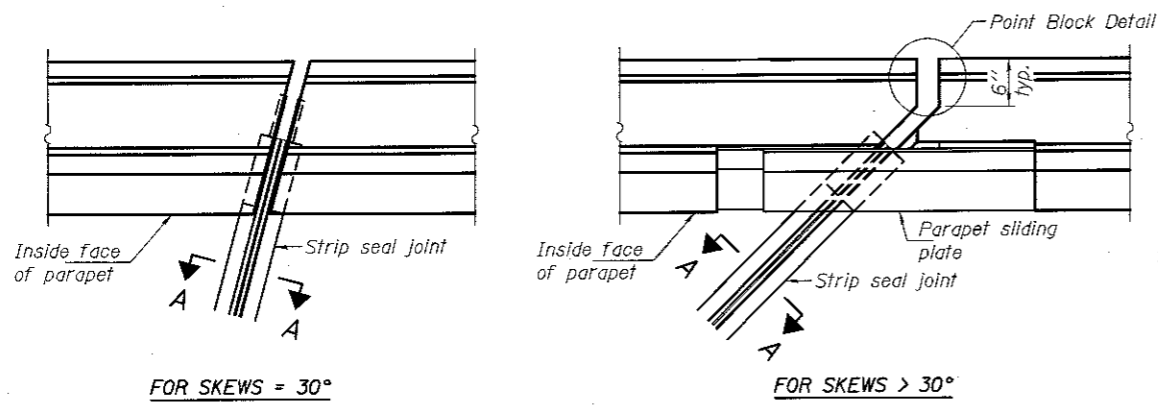


BARS d(E)

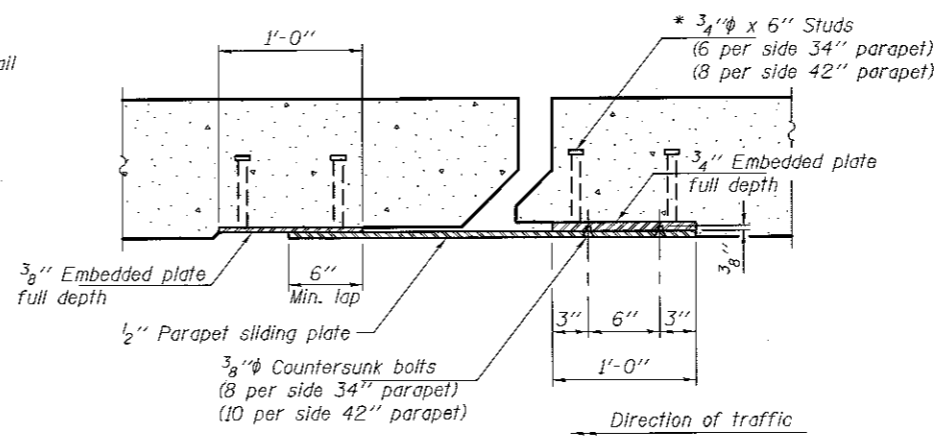
BAR d1(E)

BILL OF MATERIAL

Bar	No.	Size	Length	Shape
d(E)	40	#5	18'-7"	U
d1(E)	40	#5	22'-3"	U
a2(E)	24	#6	4'-0"	—
d(E)	24	#4	5'-11"	L
d1(E)	24	#5	3'-11"	L
h(E)	24	#6	19'-5"	—
h1(E)	24	#6	23'-1"	—
Concrete Removal			Cu. Yd.	24.2
Concrete Superstructure			Cu. Yd.	24.0
Reinforcement Bars, Epoxy Coated			Lbs.	3570

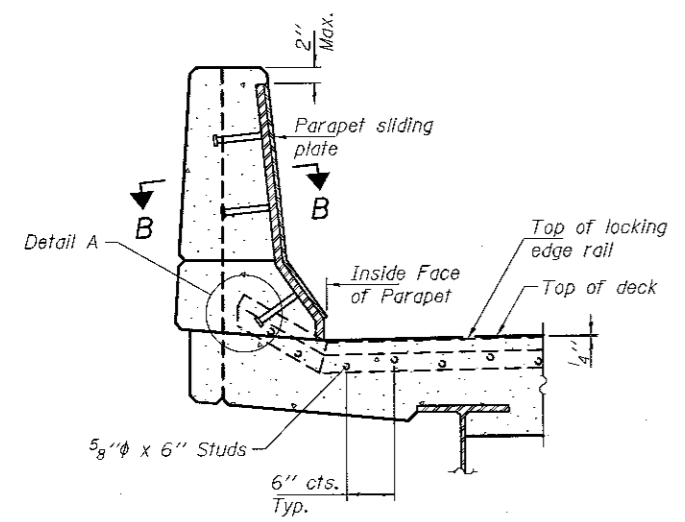


PLAN AT PARAPET



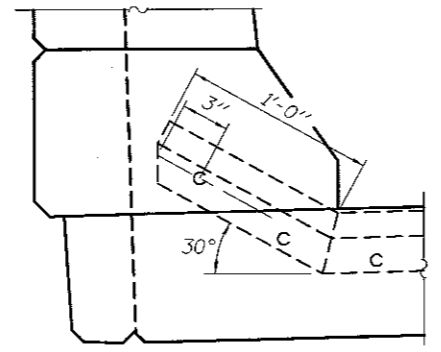
SECTION B-B

Notes:
 The strip seal shall be made continuous and shall have a minimum thickness of 1/4". The configuration of the strip seal shall match the configuration of the locking edge rails. Open or "webbed" strip seal gland configurations are not permitted. The gland shall be sized for a maximum rated movement of 4 inches.
 The locking edge rails depicted are configured for typical applications and are conceptual only. The actual configuration of the locking edge rails and matching strip seal may vary from manufacturer to manufacturer provided they fit the application and meet the minimum anchorage shown. Flanged edge rails, however, will not be allowed. Locking edge rails may exceed the 4 1/2" maximum depth provided the anchorage system is revised according to the manufacturer's recommendation.
 The manufacturer's recommended installation methods shall be followed.
 All steel components shall be galvanized after fabrication according to Article 520.03 of the Standard Specifications.
 The Maximum space between locking edge rail segments shall be 3/16" and sealed with a suitable sealant; however, any rail joint within 10' measured perpendicular to the face of the curb or parapet shall be welded as shown in the locking edge rail splice detail.

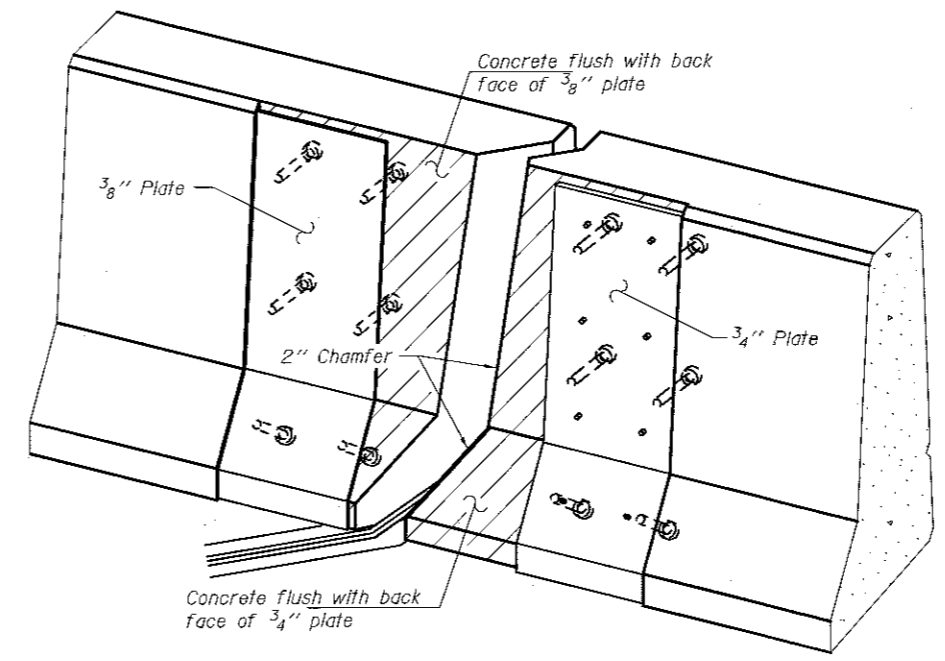


ELEVATION AT PARAPET

(Skews > 30° shown. Skews ≤ 30° similar except as shown in plan view.)

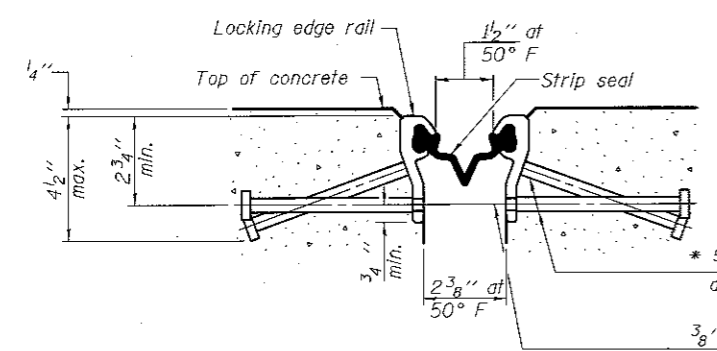


DETAIL A

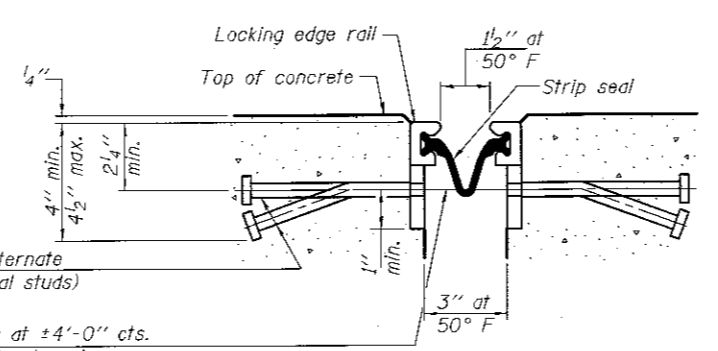


TRIMETRIC VIEW
 (Showing embedded plates only)

Cost of parapet sliding plates, embedded plates, and anchorage studs included with Preformed Joint Strip Seal.
 34" F-shape barrier shown, 42" F-shape similar as noted.
 The concrete opening below the strip seal will vary based on the locking edge rail chosen by the Contractor. Deck and parapet lengths shown elsewhere in the plans are dimensioned to the concrete opening, not the joint opening, and are based on the rolled locking edge rail. If the Contractor elects to use a different locking edge rail, dimensional adjustments may be required. One exception to this would be the strip seal joint at the end of the precast bridge approach slab. For these cases the pavement connector length shall be adjusted, not the length of the bridge approach slab.



SHOWING ROLLED RAIL JOINT

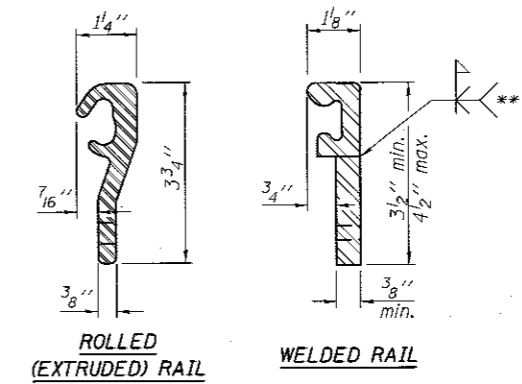


SHOWING WELDED RAIL JOINT

* 5/8" φ x 6" studs at 6" cts. (alternate angled/bent studs with horizontal studs)
 3/8" φ threaded rods in 7/16" φ holes at ±4'-0" cts. for holding the proper joint opening based on the temperature during the deck pour. Place to miss studs. All rods shall be burned, or sawed off flush with the plates after concrete is set.

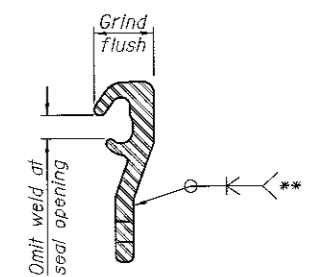
SECTION A-A

* Granular or solid flux filled headed studs conforming to Article 1006.32 of the Std. Specs., automatically end welded.



LOCKING EDGE RAILS

** Back gouge not required if complete joint penetration is verified by mock-up.



LOCKING EDGE RAIL SPLICE

The inside of the locking edge rail groove shall be free of weld residue. Rolled rail shown, welded rail similar.

BILL OF MATERIAL

Item	Unit	Total
Preformed Joint Strip Seal	Foot	168

EJ-SS

8-11-17

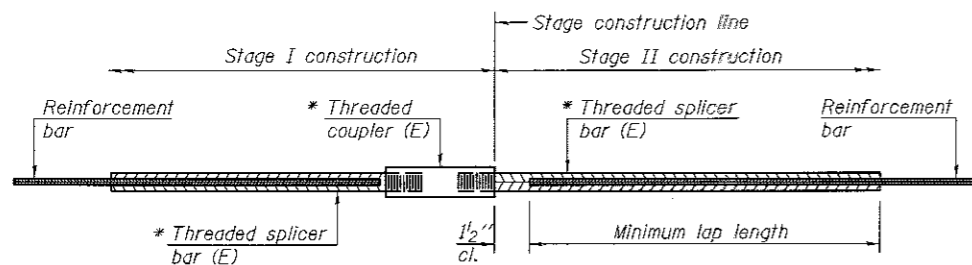
DESIGNED MLD	EXAMINED <i>Timothy A. Anhalt</i>	DATE MARCH 20, 2018
CHECKED RPN RPN	ENGINEER OF STRUCTURAL SERVICES	
DRAWN baliva	PASSED <i>Carl Perry</i>	REVISED
CHECKED MLD RPN	ENGINEER OF BRIDGES AND STRUCTURES	REVISED

STATE OF ILLINOIS
 DEPARTMENT OF TRANSPORTATION

PREFORMED JOINT STRIP SEAL
 SN 037-0001 & 0002

SHEET NO. 3 OF 4 SHEETS

F.A. RTE. 74/280	SECTION 02 BJR 2018-1	COUNTY HENRY	TOTAL SHEETS 21	SHEET NO. 20
			CONTRACT NO. 64M62	
ILLINOIS FED. AID PROJECT				



STANDARD BAR SPLICER ASSEMBLY

Threaded splicer bar length = min. lap length + 1/2" + thread length

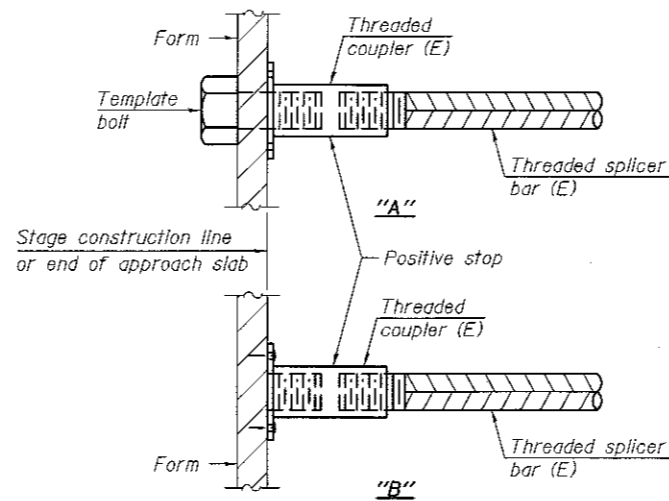
* Epoxy not required on Bar Splicer Assembly components used in conjunction with black bars.

SN 037-0001

Location	Bar size	No. assemblies required	Minimum lap length
W. Abut. (Deck)	#5	10	3'-6"
W. Abut. (HB)	#6	6	4'-0"
E. Abut. (Deck)	#5	10	3'-6"
E. Abut. (HB)	#6	6	4'-0"

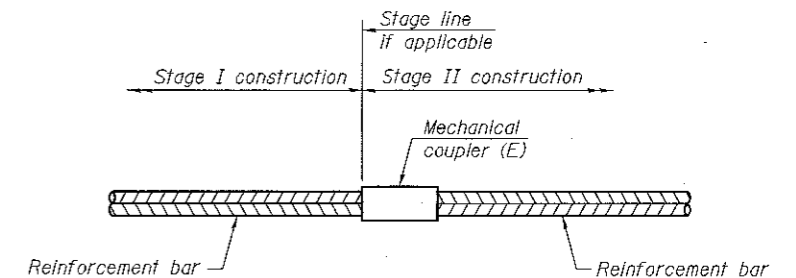
SN 037-0002

Location	Bar size	No. assemblies required	Minimum lap length
W. Abut. (Deck)	#5	10	3'-6"
W. Abut. (HB)	#6	6	4'-0"
E. Abut. (Deck)	#5	10	3'-6"
E. Abut. (HB)	#6	6	4'-0"



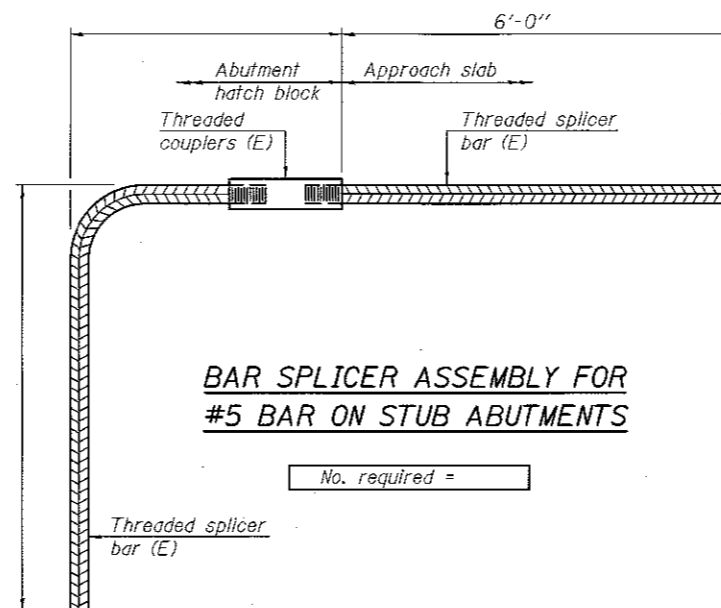
INSTALLATION AND SETTING METHODS

"A" : Set bar splicer assembly by means of a template bolt.
 "B" : Set bar splicer assembly by nailing to wood forms or cementing to steel forms.
 (E) : Indicates epoxy coating.



STANDARD MECHANICAL SPLICER

Location	Bar size	No. assemblies required



BAR SPLICER ASSEMBLY FOR #5 BAR ON STUB ABUTMENTS

NOTES

Splicer bars shall be deformed with threaded ends and have a minimum 60 ksi yield strength.
 All reinforcement shall be lapped and tied to the splicer bars.
 Bar splicer assemblies shall be epoxy coated according to the requirements for reinforcement bars. See Section 508 of the Standard Specifications.
 See approved list of bar splicer assemblies and mechanical splicers for alternatives.

BSD-1

2-17-2017

DESIGNED MLD	EXAMINED	DATE MARCH 20, 2018	STATE OF ILLINOIS DEPARTMENT OF TRANSPORTATION	BAR SPLICER ASSEMBLY AND MECHANICAL SPLICER DETAILS SN 037-0001 & 0002	F.A. RTE.	SECTION	COUNTY	TOTAL SHEETS	SHEET NO.	
CHECKED RPN RPN	PASSED	REVIS			74/280	D2 BJR 2018-1	HENRY	21	21	
DRAWN balva	REVIS	REVIS			CONTRACT NO. 64M62					
CHECKED MLD RPN	ENGINEER OF BRIDGES AND STRUCTURES	REVIS			SHEET NO. 4 OF 4 SHEETS					