

STATE OF ILLINOIS
DEPARTMENT OF TRANSPORTATION
DIVISION OF HIGHWAYS

**PROPOSED
HIGHWAY PLANS**
FAP ROUTE 22 (IL 78)
SECTION (14BR-1)BR
PROJECT STP-P9UP(227)
BRIDGE REPLACEMENT & ROADWAY IMPROVEMENTS
HENRY COUNTY
C-94-171-06

F.A.P. RTE.	SECTION	COUNTY	TOTAL SHEETS	SHEET NO.
22	(14BR-1)BR	HENRY	75	1
		ILLINOIS	CONTRACT NO. 68637	

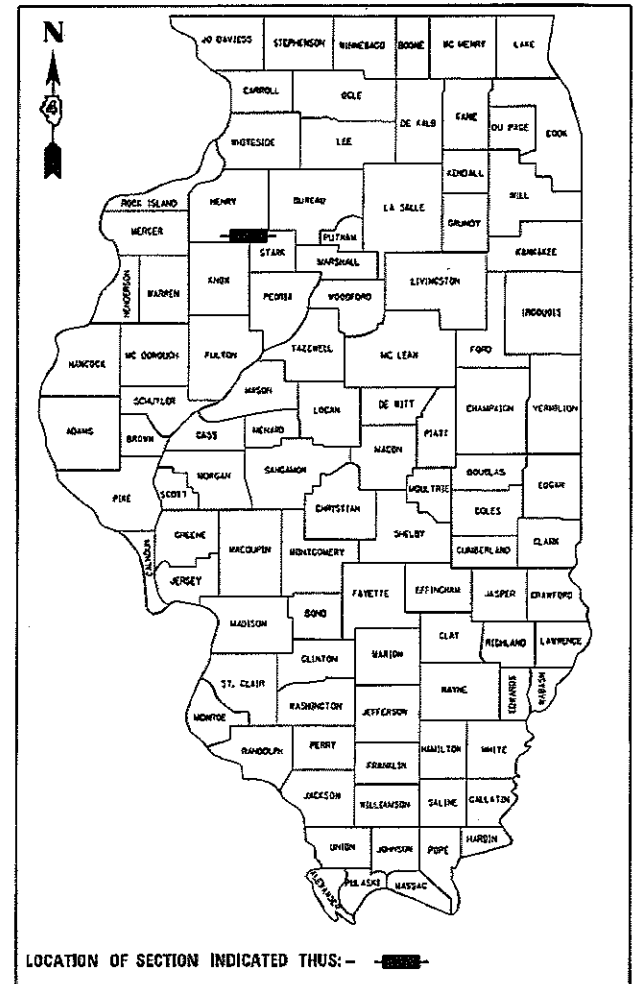
* 70 + 5 = 75 TOTAL SHEETS

D-94-105-06

INDEX OF SHEETS

- 1 COVER SHEET
- 2 GENERAL NOTES AND STANDARDS
- 3 STATUS OF UTILITIES
- 4-10 SUMMARY OF QUANTITIES
- 11-14 SCHEDULE OF QUANTITIES
- 15 ALIGNMENT, TIES AND BENCHMARKS
- 16 TYPICAL SECTIONS
- 17 REMOVAL PLAN
- 18 PLAN AND PROFILE
- 19 MAINTENANCE OF TRAFFIC - STAGING/CONSTRUCTION SEQUENCE
- 20-22 MAINTENANCE OF TRAFFIC - TYPICAL SECTIONS
- 23-26 MAINTENANCE OF TRAFFIC - PLANS
- 27 EROSION CONTROL PLAN
- 28-51 STRUCTURAL PLANS
- 52-61 DISTRICT DETAILS
- 62-70 CROSS SECTIONS

70A-70E INFORMATIONAL ONLY

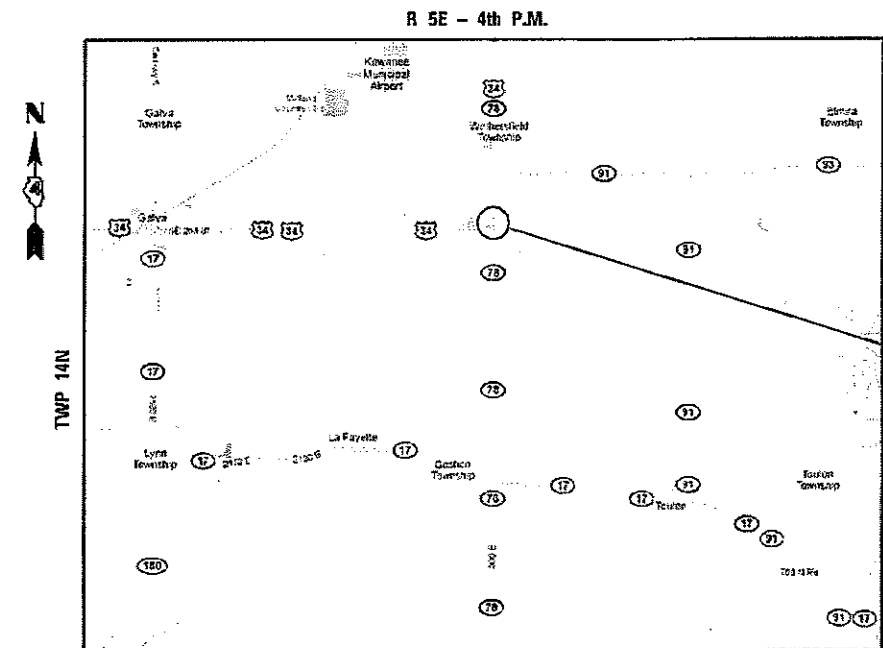
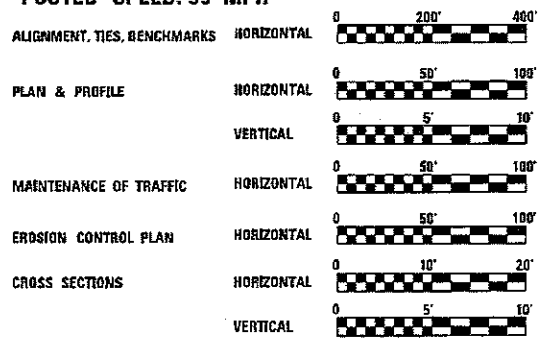


PREPARED BY:
LIN ENGINEERING, LTD.
WESTMONT, IL 60559
(630) 323-5168

SEE SHEET 2 FOR GENERAL NOTES AND STANDARDS

**IMPROVEMENTS LOCATED IN
WETHERSFIELD TOWNSHIP**

ROADWAY DESIGNATION: MINOR ARTERIAL (RURAL)
ADT: 2,750(2011)
SU: 2.59%(2011)
MU: 6.48%(2011)
POSTED SPEED: 55 MPH



IMPROVEMENT LOCATION
IL ROUTE 78 OVER INDIAN CREEK
EXISTING STRUCTURE: 037-0072
PROPOSED STRUCTURE: 037-0177
BEGIN PROJECT: STA 89+95.00
END PROJECT: STA 99+00.00

WETHERSFIELD TOWNSHIP



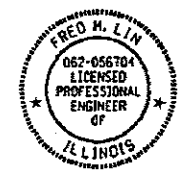
LOCATION MAP

GROSS AND NET LENGTH = 905 FT = 0.171 MILE

FULL SIZE PLANS HAVE BEEN PREPARED USING STANDARD ENGINEERING SCALES. REDUCED SIZED PLANS WILL NOT CONFORM TO STANDARD SCALES. IN MAKING MEASUREMENTS ON REDUCED PLANS, THE ABOVE SCALES MAY BE USED.

J.U.I.E.
JOINT UTILITY LOCATION INFORMATION FOR EXCAVATION
1-800-892-0123
OR 811

PROJECT MANAGER: RON NOLTE (309) 671-3470
PROJECT ENGINEER: RICH DOTSON (309) 671-3455
CONTRACT NO. 68637
CATALOG NO. 032329-00P



FRED M. LIN, P.E.
ILLINOIS REGISTERED ENGINEER NO. 062-056704
REGISTRATION EXPIRES NOV. 30, 2019

STATE OF ILLINOIS
DEPARTMENT OF TRANSPORTATION

SUBMITTED Feb 02 2018
Kennel A. Barnett (KSD)
REGION THREE ENGINEER

Mar 23 2018
[Signature]
ENGINEER OF DESIGN AND ENVIRONMENT

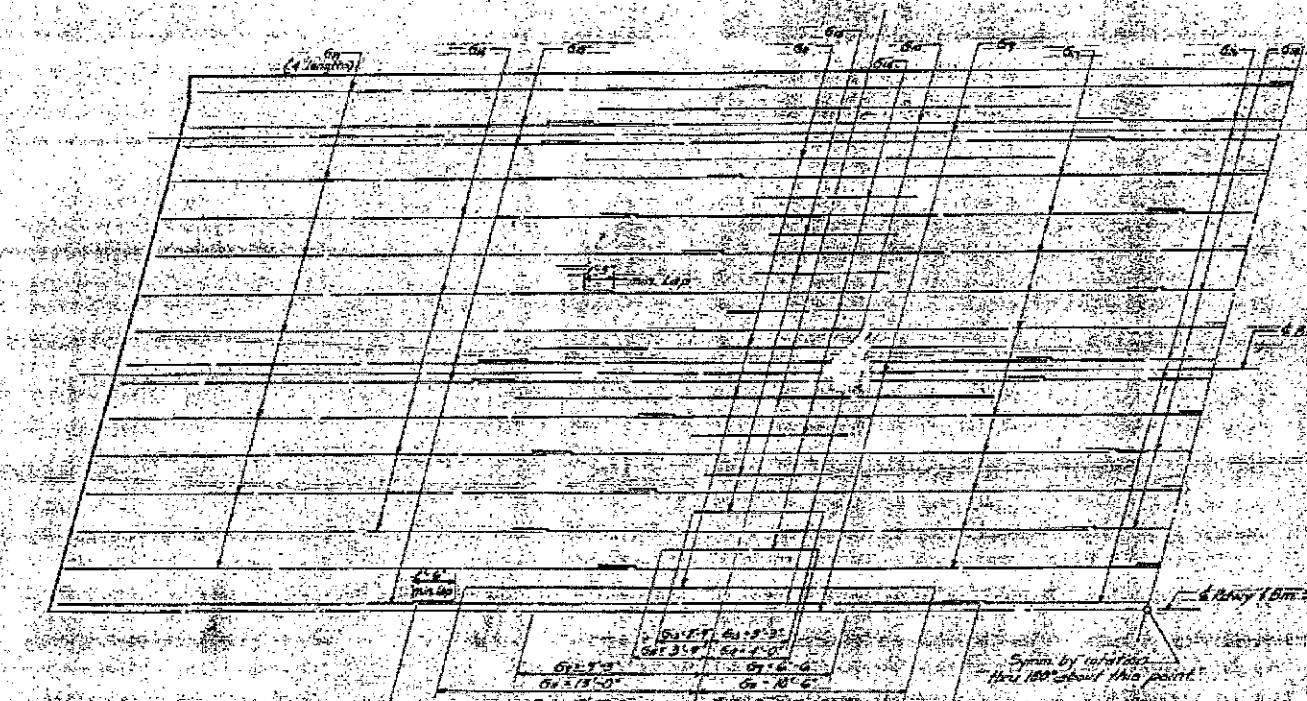
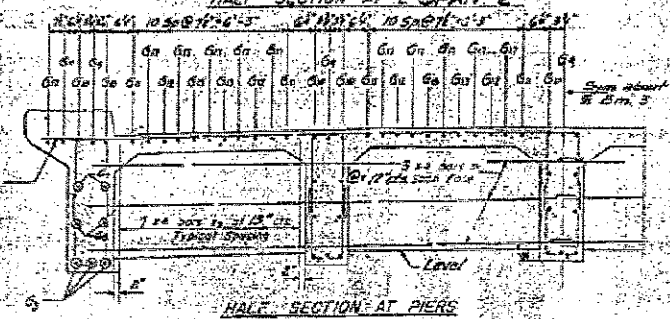
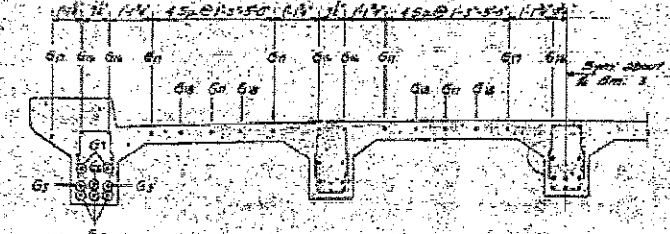
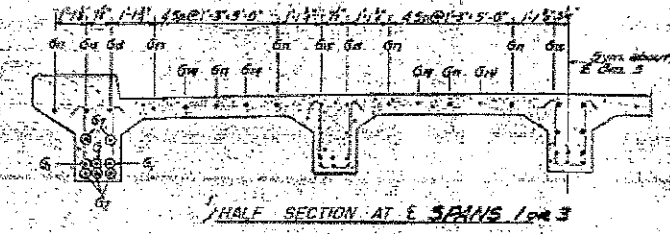
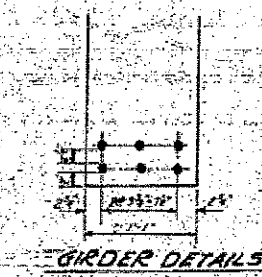
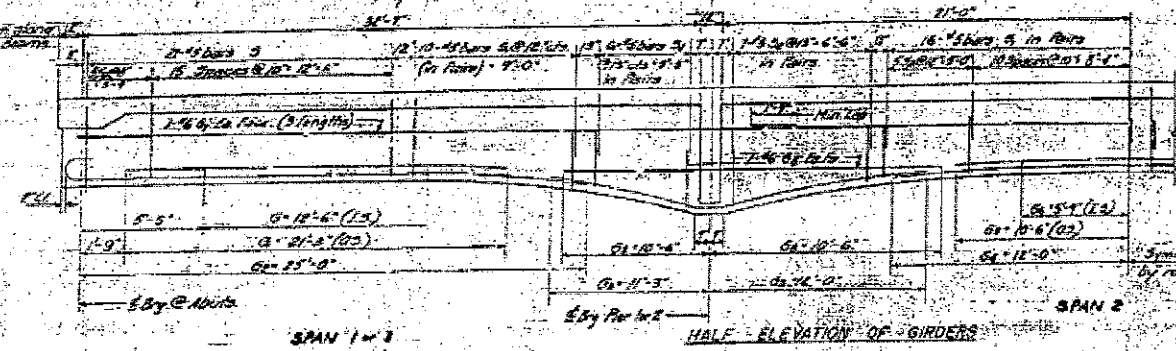
Mar 23 2018
[Signature]
DIRECTOR OF HIGHWAYS PROJECT IMPLEMENTATION

**PRINTED BY THE AUTHORITY
OF THE STATE OF ILLINOIS**

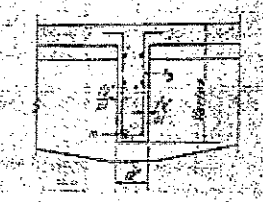
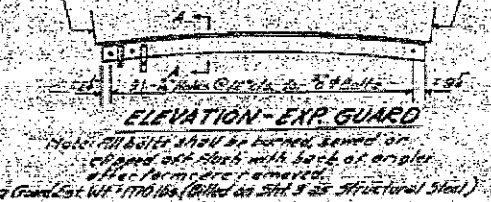
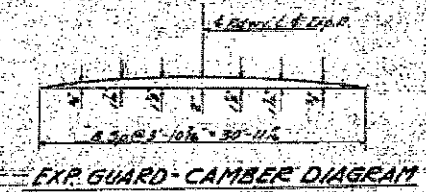
REV 4-12-18

STATE OF ILLINOIS
DEPARTMENT OF PUBLIC WORKS & BUILDINGS
DIVISION OF HIGHWAYS

ROUTE NO.	SECTION	COUNTY	TOTAL SHEETS	SHEET NO.
29	14BR-1	Henry	29	23

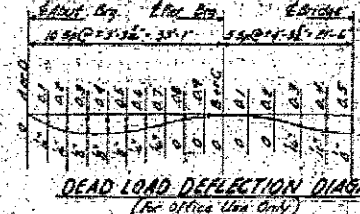


FOR INFORMATION ONLY



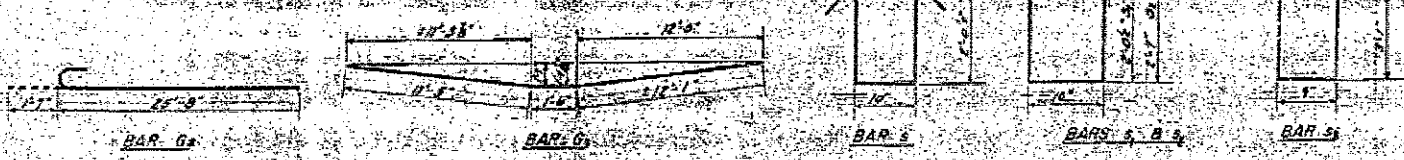
BAR LIST FOR GIRDERS

Bar	Qty	Size	Length	Notes
G1	2	#11	11'-6"	
G2	2	#11	21'-0"	
G3	2	#11	21'-0"	
G4	2	#11	21'-0"	
G5	2	#11	21'-0"	
G6	2	#11	21'-0"	
G7	2	#11	21'-0"	
G8	2	#11	21'-0"	
G9	2	#11	21'-0"	
G10	2	#11	21'-0"	
G11	2	#11	21'-0"	
G12	2	#11	21'-0"	
G13	2	#11	21'-0"	
G14	2	#11	21'-0"	
G15	2	#11	21'-0"	
G16	2	#11	21'-0"	
G17	2	#11	21'-0"	
G18	2	#11	21'-0"	
G19	2	#11	21'-0"	
G20	2	#11	21'-0"	
G21	2	#11	21'-0"	
G22	2	#11	21'-0"	
G23	2	#11	21'-0"	
G24	2	#11	21'-0"	
G25	2	#11	21'-0"	
G26	2	#11	21'-0"	
G27	2	#11	21'-0"	
G28	2	#11	21'-0"	
G29	2	#11	21'-0"	
G30	2	#11	21'-0"	
G31	2	#11	21'-0"	
G32	2	#11	21'-0"	
G33	2	#11	21'-0"	
G34	2	#11	21'-0"	
G35	2	#11	21'-0"	
G36	2	#11	21'-0"	
G37	2	#11	21'-0"	
G38	2	#11	21'-0"	
G39	2	#11	21'-0"	
G40	2	#11	21'-0"	
G41	2	#11	21'-0"	
G42	2	#11	21'-0"	
G43	2	#11	21'-0"	
G44	2	#11	21'-0"	
G45	2	#11	21'-0"	
G46	2	#11	21'-0"	
G47	2	#11	21'-0"	
G48	2	#11	21'-0"	
G49	2	#11	21'-0"	
G50	2	#11	21'-0"	
G51	2	#11	21'-0"	
G52	2	#11	21'-0"	
G53	2	#11	21'-0"	
G54	2	#11	21'-0"	
G55	2	#11	21'-0"	
G56	2	#11	21'-0"	
G57	2	#11	21'-0"	
G58	2	#11	21'-0"	
G59	2	#11	21'-0"	
G60	2	#11	21'-0"	
G61	2	#11	21'-0"	
G62	2	#11	21'-0"	
G63	2	#11	21'-0"	
G64	2	#11	21'-0"	
G65	2	#11	21'-0"	
G66	2	#11	21'-0"	
G67	2	#11	21'-0"	
G68	2	#11	21'-0"	
G69	2	#11	21'-0"	
G70	2	#11	21'-0"	
G71	2	#11	21'-0"	
G72	2	#11	21'-0"	
G73	2	#11	21'-0"	
G74	2	#11	21'-0"	
G75	2	#11	21'-0"	
G76	2	#11	21'-0"	
G77	2	#11	21'-0"	
G78	2	#11	21'-0"	
G79	2	#11	21'-0"	
G80	2	#11	21'-0"	
G81	2	#11	21'-0"	
G82	2	#11	21'-0"	
G83	2	#11	21'-0"	
G84	2	#11	21'-0"	
G85	2	#11	21'-0"	
G86	2	#11	21'-0"	
G87	2	#11	21'-0"	
G88	2	#11	21'-0"	
G89	2	#11	21'-0"	
G90	2	#11	21'-0"	
G91	2	#11	21'-0"	
G92	2	#11	21'-0"	
G93	2	#11	21'-0"	
G94	2	#11	21'-0"	
G95	2	#11	21'-0"	
G96	2	#11	21'-0"	
G97	2	#11	21'-0"	
G98	2	#11	21'-0"	
G99	2	#11	21'-0"	
G100	2	#11	21'-0"	



DESIGNED: J. J. ...
CHECKED: A. P. ...
DRAWN: J. P. ...
INCHES: A. P. ...

APPROVED: [Signature]
DATE: April 25, 1958



GIRDER & EXP. GUARD DETAILS
S.B.T. Rt. 30 SEC. 14 BR-1
HENRY COUNTY
STA. 941.48.50

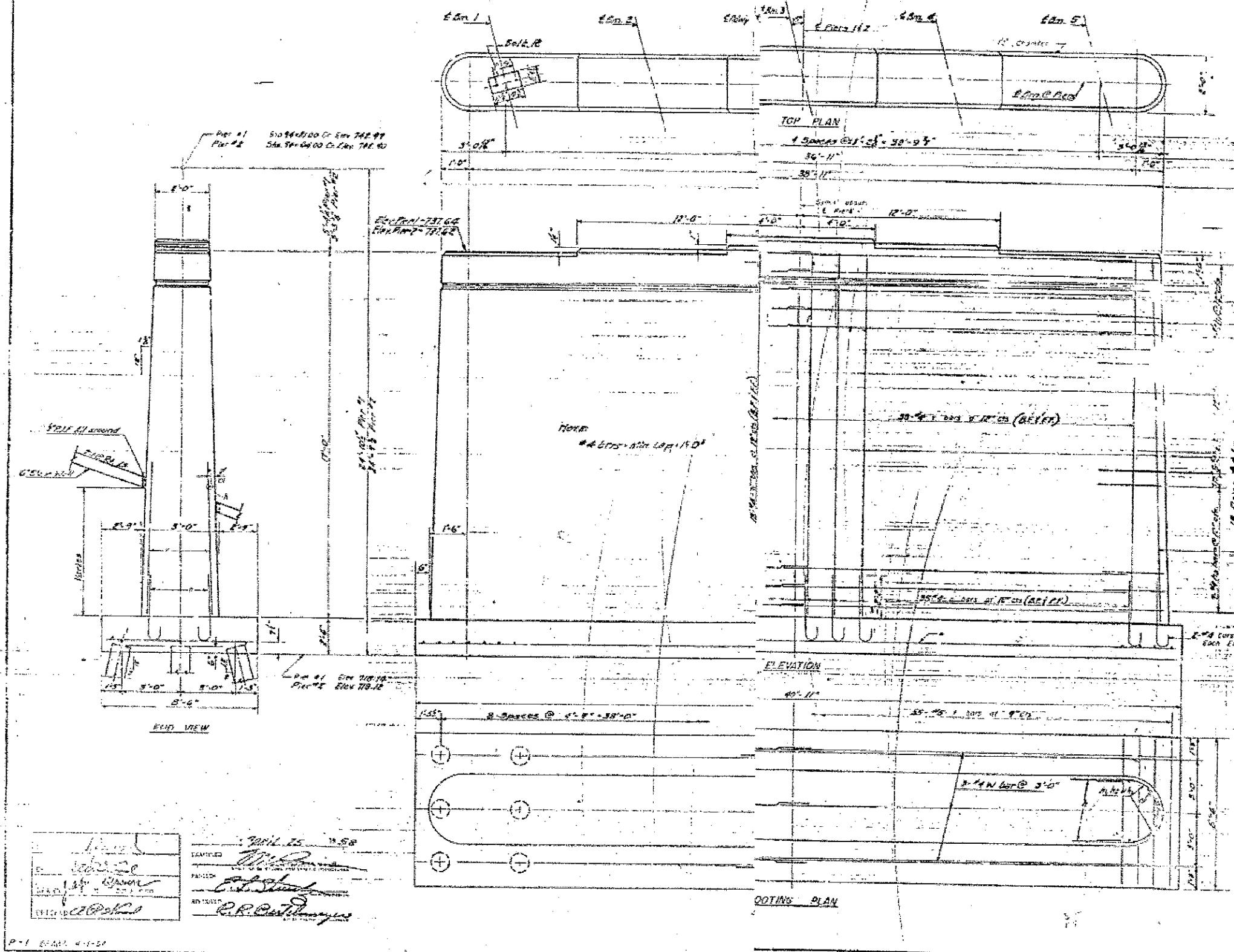
MODEL: Default
FILE NAME: D:\WORK\CD\INTEG\Illinois\proj\pilot\Documents\DOT\Office\DR\DR1\Jensen\Waller\A107070.dwg

USER NAME = nolters	DESIGNED -	REVISED -	STATE OF ILLINOIS DEPARTMENT OF TRANSPORTATION	EXISTING STRUCTURE PLAN SN 037-0072	F.A.P. RTE. 22	SECTION (14BR-1)BR	COUNTY HENRY	TOTAL SHEETS 70	SHEET NO. 70C
PLOT SCALE = 0.0920" / in.	DRAWN -	REVISED -	SCALE:	SHEET OF SHEETS STA. TO STA.	CONTRACT NO. 68637				
PLOT DATE = 4/7/2018	CHECKED -	REVISED -	ILLINOIS FED. AID PROJECT						

ADDED SHEET 4-12-18

STATE OF ILLINOIS
DEPARTMENT OF PUBLIC WORKS & BUILDINGS
DIVISION OF HIGHWAYS

29	1087	Henry	29	25	8 SHEETS
----	------	-------	----	----	----------



NOTCH DETAIL

DETAIL OF BARS
Ref. Dr. 180

Bar	Size	Spacing
1	#4	12"
2	#4	12"
3	#4	12"

PILE DATA

Type: Distreated
Capacity: 20 Tons
Estimated Length: 13 ft.
Test Piles: 1 (180)

BAR #

PIERS
BILL OF MATERIALS

Bar	Qty	Size	Remarks
1	12	#4	14'-0"
2	12	#4	12'-0"
3	12	#4	12'-0"
4	12	#4	12'-0"
5	12	#4	12'-0"
6	12	#4	12'-0"
7	12	#4	12'-0"
8	12	#4	12'-0"
9	12	#4	12'-0"
10	12	#4	12'-0"
11	12	#4	12'-0"
12	12	#4	12'-0"

Clear Concrete Cast 1968
Reinforcement Bars (lbs. 550)

Distreated Piles 12-#4 12'-0"
Test Piles (Timber) 24'

FOR INFORMATION ONLY

PIERS
S.B.I. Rt. 50 SEC. 16 DEC-1
HENRY COUNTY
STA. 94 + 42.50

DESIGNED: [Signature]
DRAWN: [Signature]
CHECKED: [Signature]
DATE: APRIL 15 1958

USER NAME = moltera	DESIGNED -	REVISED -	STATE OF ILLINOIS DEPARTMENT OF TRANSPORTATION	EXISTING STRUCTURE PLAN SN 037-0072	F.A.P. RTE. 22	SECTION (148R-1)8R	COUNTY HENRY	TOTAL SHEETS 70	SHEET NO. 70D
PLOT SCALE = 0.0920" / in.	CHECKED -	REVISED -	SCALE:	SHEET OF SHEETS STA. TO STA.	CONTRACT NO. 68637				
PLOT DATE = 4/7/2018	DATE -	REVISED -	ILLINOIS FED. AID PROJECT						

ADDED SHEET 4-12-18

