

STATE OF ILLINOIS
DEPARTMENT OF TRANSPORTATION

F.A. RTE.	SECTION	COUNTY	TOTAL SHEETS	SHEET NO.
VAR	D4 BRIDGE DECK SEALING 2018	VARIOUS	11	1
		ILLINOIS	CONTRACT NO. 68D81	

D-94-048-17



PROJECT DESCRIPTION:
THIS PROJECT CONSISTS OF BRIDGE DECK SEALING OF VARIOUS STRUCTURES THROUGHOUT VARIOUS COUNTIES IN DISTRICT 4.

STATE OF ILLINOIS
DEPARTMENT OF TRANSPORTATION

SUBMITTED February 5, 2018
Paula James
 REGION THREE ENGINEER

March 23, 2018
Paul P. Chitt
 ENGINEER OF DESIGN AND ENVIRONMENT

DIRECTOR OF HIGHWAYS PROJECT IMPLEMENTATION

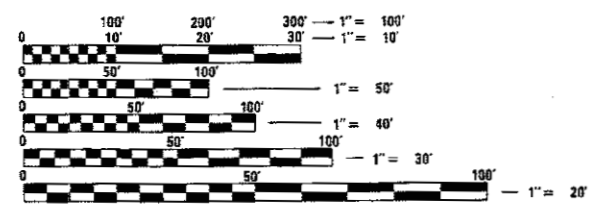
PRINTED BY THE AUTHORITY OF THE STATE OF ILLINOIS

INDEX OF SHEETS

- 1 COVER SHEET
- 2 COMMITMENTS/JOB SPECIFIC NOTES
- 3 SUMMARY OF QUANTITIES
- 4 TYPICAL BRIDGE DECK SECTION
- 5-11 SCHEDULE OF QUANTITIES

HIGHWAY STANDARDS

- 701006-05
- 701201-04
- 701301-04
- 701400-09
- 701406-11
- 701411-09
- 701426-09
- 701428-01
- 701456-05
- 701602-09
- 701901-07



FULL SIZE PLANS HAVE BEEN PREPARED USING STANDARD ENGINEERING SCALES. REDUCED SIZED PLANS WILL NOT CONFORM TO STANDARD SCALES. IN MAKING MEASUREMENTS ON REDUCED PLANS, THE ABOVE SCALES MAY BE USED.

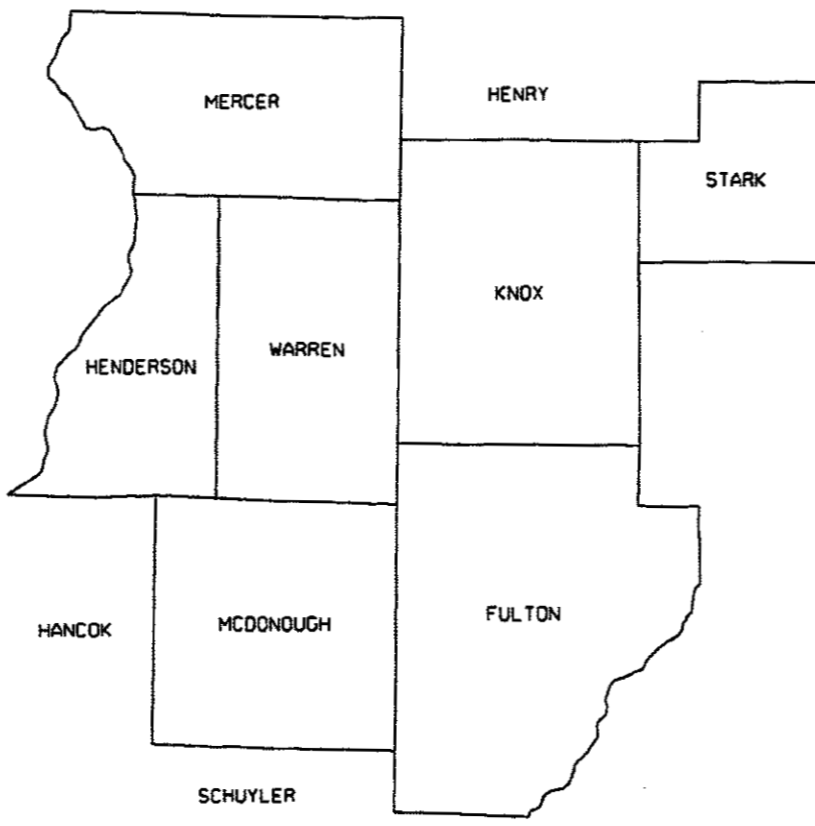
J.U.L.I.E.
JOINT UTILITY LOCATION INFORMATION FOR EXCAVATION
1-800-892-0123
OR 811

PROJECT ENGINEER MIKE LEWIS (309) 671-3454
 PROJECT MANAGER RAYMOND SAMARA/SOBHI LABABIDI (309) 671-3459
 CATALOG NO. 035505-00D
 CONTRACT NO. 68D81

**PROPOSED
HIGHWAY PLANS**

VARIOUS ROUTES
SECTION D4 BRIDGE DECK SEALING 2018
PROJECT
PREVENTATIVE MAINTENANCE (BRIDGE)
VARIOUS COUNTIES

C-94-082-17



GROSS LENGTH = NA
NET LENGTH = NA

COMMITMENTS

THERE ARE NO COMMITMENTS FOR THIS PROJECT.

JOB SPECIFIC NOTES

PRIOR TO PERFORMING ANY WORK, THE CONTRACTOR SHALL COORDINATE THEIR WORK EFFORT WITH ANY EXISTING CONSTRUCTION CONTRACTS IN THEIR VICINITY TO ALLEVIATE TRAFFIC CONFLICTS AND ASSURE TRAFFIC PROGRESSION THROUGH ALL WORK ZONES.

A FLOW METER SHALL BE PROVIDED BY THE CONTRACTOR TO ACCURATELY MEASURE QUANTITIES PER BRIDGE. THIS SHALL NOT BE PAID FOR SEPARATELY, BUT SHALL BE INCLUDED IN THE CONTRACT UNIT PRICE PER SQUARE FEET FOR "BRIDGE DECK CONCRETE SEALER."

MODEL: Default
FILE NAME: S:\BENDMART\STDP\USRD\AD_868D81-2018_BRIDGE DECK SEALING 2018\B68D81.PLAN\$GDT

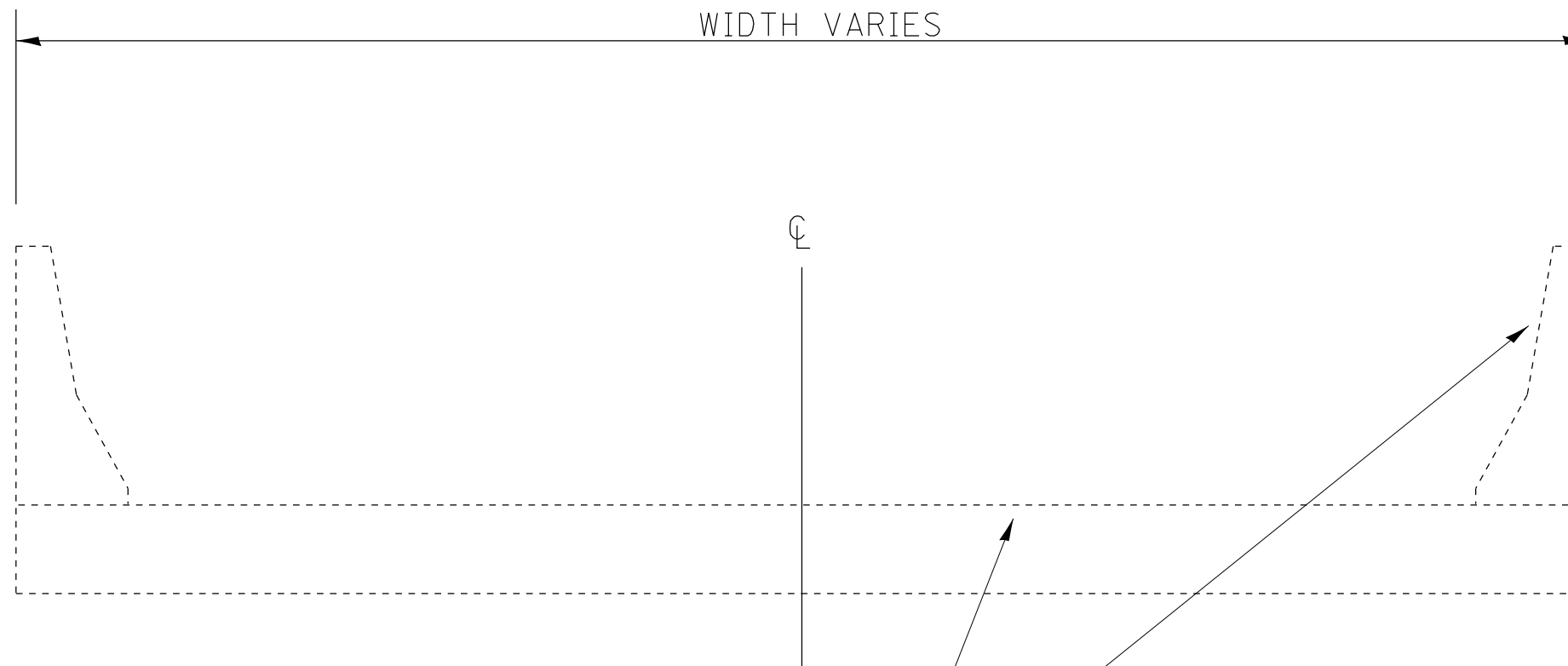
USER NAME = lababidism	DESIGNED -	REVISED -
	DRAWN -	REVISED -
PLOT SCALE = 32.3929' / in.	CHECKED -	REVISED -
PLOT DATE = 2/6/2018	DATE -	REVISED -

**STATE OF ILLINOIS
DEPARTMENT OF TRANSPORTATION**

COMMITMENTS/JOB SPECIFIC NOTE

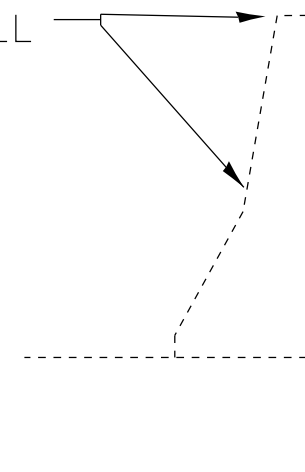
SCALE: SHEET OF SHEETS STA. TO STA.

F.A. RTE.	SECTION	COUNTY	TOTAL SHEETS	SHEET NO.
VAR.	D4 BRIDGE DECK SEALING 2018	VARIOUS	11	2
ILLINOIS FED. AID PROJECT			CONTRACT NO. 68D81	



APPLY PROTECTIVE COAT TO BRIDGE DECK, FACE AND TOP OF PARAPET WALLS

APPLY TO FACE AND TOP OF PARAPET WALL



NOTE
 IN CASES OF SHORTER PARAPET WALLS WITH ATTACHED RAIL, THE ABOVE APPLICATION METHOD WILL STILL APPLY.

MODEL D:\64\IT
 FILE NAME: S:\CEN\DRIFT\STDS\PLANS\504\03_06\08\01-2018_BRIDGE_DECK_SEALING_2018\68DB1-PLANS.dgn

USER NAME = lababidism	DESIGNED -	REVISED -
	DRAWN -	REVISED -
PLOT SCALE = 32.3529 ' / in.	CHECKED -	REVISED -
PLOT DATE = 2/6/2018	DATE -	REVISED -

STATE OF ILLINOIS
DEPARTMENT OF TRANSPORTATION

TYPICAL BRIDGE DECK SECTION

SCALE: SHEET OF SHEETS STA. TO STA.

F.A. RTE.	SECTION	COUNTY	TOTAL SHEETS	SHEET NO.
VAR.	D4 BRIDGE DECK SEALING 2018	VARIOUS	11	4
			CONTRACT NO. 68DB1	
		ILLINOIS	FED. AID PROJECT	

CONCRETE SEALER							
SN	FacilityCarried	FeatureCrossed	Location	Length Total	Bridge Rdwy Width	Area sq ft	Parapet Area Sq Sf
0290005	US 24	OTTER CREEK	1 MI SW JCT US136&24	320.2	33	10,567	2,521
0290007	US 24	BN RR (063690C)	1 MI E OF SCHUYLER C	262	32	8,384	2,114
0290012	US 136	LACY DITCH	.25 MI W OF HAVANA	232.5	36	8,370	1,908
0290021	ILL 78 & 97	LACY DITCH	.1 N. JCT136&ILL 78	166.9	32	5,341	1,448
0290022	ILL 100	OTTER CR	S EDGE OF ENION	233.4	30	7,002	1,914
0290023	ILL 100	SEAHORNE BRANCH	2.25 MI N MARBLETOWN	27.5	40	1,100	473
0290024	ILL 100	KERTON CR	2 MI N ANDERSON LK	57	26	1,482	679
0290025	ILL 95	SPOON RIVER	2 MI W SMITHFIELD	509	32	16,288	3,843
0290026	ILL 97	TRIB BIG CREEK	3.5 MI S OF CUBA	32	42	1,344	504
0290030	US 24	DRAINAGE DITCH	1.5 MI SW BANNER	25.3	32.3	817	457
0290043	PRIVATE ENTR.	THOMPSON LAKE DIT	2 MI N JCT 136 ENT	136	13.8	1,877	1,232
0290049	FAS 457-CH 31	DICKSON CREEK	SE DICKSON MOS	25	24	600	455
0290050	ILL 116	SPOON RIVER	W EDGE LONDON MILLS	798	32	25,536	5,866
0290051	ILL 9	TURKEY CR	4.25 MI W OF FIATT	178	32	5,696	1,526
0290052	ILL 9	LOST GROVE CREEK	4 MI W OF FIATT	137.6	36	4,954	1,243
0290053	ILL 41	CEDAR CREEK	2 MI N. OF AVON	187	36	6,732	1,589
0290054	ILL 9	PUTT CREEK	4 MI W OF CANTON	58.8	32	1,882	692
0290056	ILL 78 & 97	SPOON RIVER	1 MI N JCT 136	591.8	31.8	18,819	4,423
0290057	ILL 97	COAL CREEK	2 MI N OF FAIRVIEW	121	32.7	3,957	1,127
0290058	FAS 457-DICKSON MN	CRABTREE CREEK	3 MI N US136 & IL 78	126	30	3,780	1,162
0290060	US 24/L 100	SPOON RIVER TRIB	.22 MI N US 136	62	36	2,232	714
0290061	ILL 97	TURKEY CREEK	2 MI S OF FAIRVIEW	61.8	32	1,978	713
0290062	ILL 97	LOST GROVE CREEK	3.2 MI S OF FAIRVIEW	75	32	2,400	805
0290063	US 136	GRAHAM BRANCH	2 MI E JCT US136&24	68.2	31.4	2,141	757
0290064	ILL 9	BIG CREEK	W. EDGE OF CANTON CL	91	39.3	3,576	917
0290065	ILL 97	PUTT CREEK	2.2 MI N OF CUBA	202	34	6,868	1,694
0290066	ILL 116	LITTLERS CR	2.4 MI W FARMINGTON	101.5	32	3,248	991
SHEET SUBTOTAL						198,735	

MODEL D:\m\h\p\FILE NAME: S:\CENDRAFT\STDSR\US136&24_068081-2018_BRIDGE DECK SEALING_2018\068081-PLANS.dgn

USER NAME = lababidism	DESIGNED -	REVISED -
	DRAWN -	REVISED -
PLOT SCALE = 32.3529 ' / in.	CHECKED -	REVISED -
PLOT DATE = 2/6/2018	DATE -	REVISED -

STATE OF ILLINOIS
DEPARTMENT OF TRANSPORTATION

SCHEDULE OF QUANTITES			
SCALE:	SHEET	OF SHEETS	STA. TO STA.

F.A. RTE.	SECTION	COUNTY	TOTAL SHEETS	SHEET NO.
VAR.	D4 BRIDGE DECK SEALING 2018	VARIOUS	11	5
CONTRACT NO. 68D81				
ILLINOIS FED. AID PROJECT				

CONCRETE SEALER-CONTINUED

SN	FacilityCarried	FeatureCrossed	Location	Length Total	Bridge Rdwy Width	Area sq ft	Parapet Area Sq Sf
0290067	US 241L 100	SPOON RIV OVER FLO	N OF DUNCAN MILLS	91	40	3,640	917
0290068	US 241L 100	SPOON RIVER	N OF DUNCAN MILLS	717.5	40	28,700	5,303
0340511	US 136 (EB)	E FORK La MOINE RIVR	1.4 MI W JCT 61 136	253.3	40	10,132	2,053
0340512	US 136 (WB)	E FORK LA MOINE	1.4 MI W JCT 61 136	253.3	40	10,132	2,053
0360007	ILL 96	SILVER CREEK	2 MI W OF LOMAX	42	32.1	1,348	574
0360009	ILL 96	DUGOUT CREEK	.5 MI E OF LOMAX	160.3	31.5	5,049	1,402
0360010	ILL 94	HONEY CR	1.5 MI S STRONGHURST	83	30.8	2,556	861
0360022	ILL 94	HENDERSON OVERFLOW	1 MI S BALD BLUFF	103.3	31.3	3,233	1,003
0360025	ILL 94	SMITH CREEK	5.25 MI N BIGGSVILLE	32	38.9	1,245	504
0360035	US 34	CHINN ST GULFPORT	0.25 MI E MISS RIV	150.4	74	11,130	1,333
0360036	US 34	BN RR (079194E)	0.75 MI E MISS RIV	192	66.9	12,845	1,624
0360039	ILL 164	HENDERSON CREEK	3 MI N OF GLADSTONE	561	31.9	17,896	4,207
0360040	ILL 94	N HENDERSON CREEK	3 MI. NW LITTLE YORK	292.2	30	8,766	2,325
0360041	ILL 94	JINKS HOLLOW CREEK	3.5 MI N BIGGSVILLE	95	30.3	2,879	945
0360042	ILL 94	FALL CREEK	4.3 MI N JCT 94&164	120.8	31.3	3,781	1,126
0360043	ILL 94	HENDERSON CREEK	1.25 MI S BALD BLUFF	362	31.8	11,512	2,814
0360044	ILL 96	CAMP CREEK	1 MI E. DALLAS CITY	137.5	31.4	4,318	1,243
0360045	ILL 96	WEAVER CREEK	.75 MI W OF LOMAX	147	31.7	4,660	1,309
0360046	ILL 164	S HENDERSON CREEK	.7 MI N OF GLADSTONE	189	32	6,048	1,603
0360047	ILL 94	BN RR & HENDERSON C	N EDGE BIGGSVILLE	429.2	32	13,734	3,284
0360049	US 34EB	CRYSTAL LK DR DITCH	1 MI E OF GULFPORT	89.6	39.4	3,530	907
0360050	US 34WB	CRYSTAL LK DR DITCH	1 MI E OF GULFPORT	89.6	39.4	3,530	907
0360051	ILL 94	DUGOUT CREEK	.5 MI S TERRE HAUTE	82	32	2,624	854
0360052	US 34	P.D. CREEK	7.5 MI W BIGGSVILLE	115	40	4,600	1,085
0360053	US 34	LONE TREE CREEK	6.5 MI W BIGGSVILLE	68	40	2,720	756
0360054	ILL 94	DIXSON CREEK	0.24 M N STRONGHURS	63	32	2,016	721
0360055	ILL 94 & 116	WOLF CR	2.8 MI N STRONGHURST	63	32	2,016	721
SHEET SUBTOTAL						227,074	

MODEL D:\m\it... FILE NAME: S:\CENDRAFT\STDSERVIS\SQ\AD_0168081-2018_BRIDGE_DECK_SEALING_2018\0168081-PLANS.dgn

USER NAME = lababidism	DESIGNED -	REVISED -
	DRAWN -	REVISED -
PLOT SCALE = 32.3529 ' / in.	CHECKED -	REVISED -
PLOT DATE = 2/6/2018	DATE -	REVISED -

**STATE OF ILLINOIS
DEPARTMENT OF TRANSPORTATION**

SCHEDULE OF QUANTITES

SCALE: SHEET OF SHEETS STA. TO STA.

F.A. RTE.	SECTION	COUNTY	TOTAL SHEETS	SHEET NO.
VAR.	D4 BRIDGE DECK SEALING 2018	VARIOUS	11	6
			CONTRACT NO. 68D81	
		ILLINOIS	FED. AID PROJECT	

CONCRETE SEALER-CONTINUED

SN	FacilityCarried	FeatureCrossed	Location	Length Total	Bridge Rdwy Width	Area (Sq Ft)	Parapet Area (Sq Sf)
0360069	ILL 94	MIDDLE CREEK	1 MI N STRONGHURST	78	32	2,496	826
0360070	ILL 164	SMITH CREEK	2.3 MI E OF OQUAWKA	130	32	4,160	1,190
0360071	CARMAN RD	HONEY CREEK	2.3 MI N OF ILL 96	210	32	6,720	1,750
0360072	ILL 94 & 116	ELLISON CREEK	1.8 MI N STRONGHURST	111	32	3,552	1,057
0370019	EB I-74	ILL 17 & B-N RR	0.5 MI W OF WOODHUL	248	39.1	9,697	2,016
0370105	TR 399-100N	I-74	1 MI SW OF WOODHULL	223	24	5,352	1,841
0480007	EB I-74	AT&SF RR (004648T)	N.GALESBURG INTERCH	173	30.2	5,225	1,491
0480008	WB I-74	AT&SF RR (004648T)	N GALESBURG INTERCH	178	30.2	5,376	1,526
0480009	EB I-74	MAIN (FAU 6800)	GALESBURG INERCH	178	30.2	5,376	1,526
0480010	WB I-74	E. MAIN ST	GALESBURG INTERCH	187	43.8	8,191	1,589
0480011	WB I-74	TR 205	1 MI W JCT US 150	112	38.6	4,323	1,064
0480012	EB I-74	TR 205	1 MI W OF US 150	112	38.6	4,323	1,064
0480019	WB US 34	I-74	NE OF GALESBURG	264	47	12,408	2,128
0480020	EB US 34	I-74	NE OF GALESBURG	264	47	12,408	2,128
0480021	US 34 WB	US 150	N CL OF GALESBURG	239	45.5	10,875	1,953
0480022	US 34 EB	US 150	N CL OF GALESBURG	239	45.5	10,875	1,953
0480026	US 150	POPE CR	2 M S OF ILL 17	135.5	33	4,472	1,229
0480030	US 150	INTERSTATE 74	1 MI E OF KNOXVILLE	225.9	32.8	7,410	1,861
0480031	US 150	SPOON RIVER	4 MI W OF ILL 180	594	28.5	16,929	4,438
0480048	BRICKYARD ROAD	I-74	1 MI NW KNOXVILLE	291	24	6,984	2,317
0480049	MARKET ST (MS 7350)	I-74	IN KNOXVILLE	231	24	5,544	1,897
0480050	TR 235	I-74	8 MI E OF KNOXVILLE	243	26.5	6,440	1,981
0480053	TR 253	I-74	6 MI E SPOON RIVER	230	26.4	6,072	1,890
0480058	KNOX ST	I-74	S OF GALESBURG INTER	257	28	7,196	2,079
0480059	CH 7	I-74	1 MI N GALESBURG INT	231	29.9	6,907	1,897
0480060	TR 121	I-74	1.5 MI N US-34 INTER	222	24	5,328	1,834
0480062	TR 89	I-74	2.5 MI S HENDERSON C	223	24	5,352	1,841
SHEET SUBTOTAL						238,353	

MODEL D:\6411...
FILE NAME: S:\CENDRAFT\STDSERVIS\5040_068081-2018_BRIDGE_DECK_SEALING_2018\068081-PLANS.dgn

USER NAME = lababidism	DESIGNED -	REVISED -
	DRAWN -	REVISED -
PLOT SCALE = 32.3529 ' / in.	CHECKED -	REVISED -
PLOT DATE = 2/6/2018	DATE -	REVISED -

**STATE OF ILLINOIS
DEPARTMENT OF TRANSPORTATION**

SCHEDULE OF QUANTITIES

SCALE: SHEET OF SHEETS STA. TO STA.

F.A. RTE.	SECTION	COUNTY	TOTAL SHEETS	SHEET NO.
VAR.	D4 BRIDGE DECK SEALING 2018	VARIOUS	11	7
			CONTRACT NO. 68DB1	
		ILLINOIS	FED. AID PROJECT	

CONCRETE SEALER-CONTINUED

SN	FacilityCarried	FeatureCrossed	Location	Length Total	Bridge Rdwy Width	Area (Sq Ft)	Parapet Area (Sq Sf)
0480063	TR 21	I-74	4 MI SW OF WOODHULL	223	24	5,352	1,841
0480065	TR 74 FARNHAM ST	US 34 BYPASS	W 150&34 INTERCHANG	184	24	4,416	1,568
0480069	FREMONT ST FAU 679	US 34 BYPASS	1.13 M N OF IL41/164	205	28.5	5,843	1,715
0480076	WB US 34	CEDAR CREEK	SW EDGE OF GALESBUR	241	42.4	10,218	1,967
0480077	EB US 34	CEDAR CREEK	SW EDGE OF GALESBUR	202	40	8,080	1,694
0480079	ILL 41	BN RR (063729D)	0.5 M N.ST.AUGUSTINE	292	36	10,512	2,324
0480080	ILL 180	SPOON RIVER	1 MI N WILLIAMSFIELD	433	30	12,990	3,311
0480081	ILL 17	FITCH CREEK	2 MI W OF LAFAYETTE	66.3	32	2,122	744
0480082	ILL 180	WALNUT CREEK	2.5M S OF ILL 17	194	32	6,208	1,638
0480083	ILL 97	LITTLERS CREEK	2 MI N OF RAPATEE	115	32	3,680	1,085
0480084	US 150	SPOON RIVER TRIB.	3.8 MI W JCT 180/150	95	32.8	3,116	945
0480085	IL 180	CADWELL CR	2 MI N WILLIAMSFIELD	81.2	31.5	2,558	848
0480086	ILL 180	BRANDYWINE CR	1.5 MI N WILLIAMSFLD	125	31.5	3,938	1,155
0480087	FAP 574 (ILL 41)	BNSF RR	S OF GALESBURG	158	40	6,320	1,386
0480088	US 150	HENDERSON CREEK	6.3 MI N OF US 34	112	36	4,032	1,064
0480089	FAS 1195 IL 180	BR BRANDYWINE CR	0.5 MI N OF US 150	93.8	40	3,752	937
0483286	FAU 6838-CH 10	BN RR & GRAVEL RD	NW-27-T11NR1E	2028.5	52	105,482	14,480
0486022	US 150 (MAIN ST)	CEDAR CREEK, BNSF RR	500 BLK W. MAIN	269.5	56	15,092	2,167
0550005	US 67	TROUBLESOME CREEK	1.7 MI S OF US 136	76	32.3	2,455	0
0550009	ILL 61	BN RR (072826L)	SOUTH OF COLMAR	247	33	8,151	2,009
0550021	CH 8	E FORK LAMOINE RIVE	1 MI N COLCHESTER	204	28	5,712	1,708
0550026	US 67	TOWN CREEK FORK	.1 MI S OF ILL 9	72.5	80	5,800	788
0550028	ILL 9	TOWN FORK CREEK	.75 MI W OF US 67	68	32	2,176	756
0550029	SB US 67	E FORK LAMOINE RIVE	1 MI N OF MACOMB	171.4	40	6,856	1,480
0550030	NB US 67	E FORK LAMOINE RIVE	1 MI N OF MACOMB	171.4	40	6,856	1,480
0550031	SB US 67	E FORK CROOKED CREE	1.2MI S WARREN CO LN	73.8	38	2,804	797
0550032	NB US 67	E FORK CROOKED CREE	NW-7-T7NR2W	73.8	38	2,804	797
SHEET SUBTOTAL						308,006	

MODEL D:\m\it FILE NAME: S:\CENDRAFT\STDSR\US50\UAD_068081-2018_BRIDGE_DECK_SEALING_2018\0486022.PLAN\$.dgn

USER NAME = lababidism	DESIGNED -	REVISED -
	DRAWN -	REVISED -
PLOT SCALE = 32.3529 ' / in.	CHECKED -	REVISED -
PLOT DATE = 2/6/2018	DATE -	REVISED -

**STATE OF ILLINOIS
DEPARTMENT OF TRANSPORTATION**

SCHEDULE OF QUANTITES

SCALE: SHEET OF SHEETS STA. TO STA.

F.A. RTE.	SECTION	COUNTY	TOTAL SHEETS	SHEET NO.
VAR.	D4 BRIDGE DECK SEALING 2018	VARIOUS	11	8
			CONTRACT NO. 68D81	
		ILLINOIS	FED. AID PROJECT	

CONCRETE SEALER-CONTINUED

SN	FacilityCarried	FeatureCrossed	Location	Length Total	Bridge Rdwy Width	Area (Sq Ft)	Parapet Area (Sq Sf)
0550042	ILL 9	BAPTIST CREEK	2 MI E BLANDINSVILLE	74.9	31.5	2,359	804
0550043	ILL 9	SPRING CREEK	4.3 MI E BLANDINSVIL	56	31.5	1,764	672
0550048	US 67	CARTER CREEK	1.3 MI S OF INDUSTRY	77	34	2,618	819
0550049	US 67	GRINDSTONE CR	N EDGE OF INDUSTRY	98.1	34	3,335	967
0550052	IL 336EB	BNSF RR	SW OF TENNESSEE	282	40	11,280	2,254
0550053	IL 336WB	BNSF RR	SW OF TENNESSEE	282	40	11,280	2,254
0550060	FAP 315 IL 336EB	TRIB KILLJORDAN CR	SOUTHWEST OF MACOM	186	41.3	7,682	1,582
0550061	FAP 315 IL 336WB	TRIB KILLJORDAN CR	SOUTHWEST OF MACOM	186.5	41.3	7,702	1,586
0550067	ADAMS ST	IL 336	1 Mi N. Ill 336	202.5	30	6,075	1,698
0550079	IL 9	SHAW CREEK	0.75 MI E OF ILL 41	94.7	32	3,030	943
0550081	SB US 67	FARMERS FORK	1 MI S OF ILL 9	118.5	40	4,740	1,110
0550083	ILL 61	La MOINE RIVER	1 MI S OF COLMAR	478.2	32	15,302	3,627
0660007	ILL 94	CAMP CREEK	5 MI N OF ALEDO	130.1	31.8	4,137	1,191
0660008	ILL 94	EDWARDS RIVER	1.9 MI N OF ILL 17	300.6	32	9,619	2,384
0660009	ILL 94	POPE CREEK	3.9 MI S OF ILL 17	148	32	4,736	1,316
0660010	ILL 94	N. HENDERSON CR	2.4 MI N OF ILL 135	103	31.7	3,265	1,001
0660013	ILL 94	DUCK CREEK	4 MI N OF LITTLE YORK	112.9	32.2	3,635	1,070
0660014	4TH ST	POPE CREEK	IN KEITHSBURG	146	32	4,672	1,302
0660015	US 67	DONAHUE CREEK	1.5 MI N OF VIOLA	83.5	39.4	3,290	865
0660016	US 67	TOMS CREEK	025 MI N ALEXIS WYE	104.7	32.4	3,392	1,013
0660017	US 67	EDWARDS RIVER	2 MI N OF VIOLA	529	39.4	20,843	3,983
0850501	US 24	SUGAR CR	.3 MI SW FULTON CO L	310	32	9,920	2,450
0880020	ILL 91	CAMP RUN CREEK	6 MI N OF PRINCEVILLE	135	32	4,320	1,225
0880021	ILL 93	W FORK SPOON RIVER	7 MI W OF BRADFORD	181.4	32	5,805	1,550
0880022	ILL 93	E FORK SPOON RIVER	2.5 MI W OF BRADFORD	147.8	32	4,730	1,315
0880023	ILL 91	MUD RUN CR	5 MI N PRINCEVILLE	103	36.3	3,739	1,001
0880024	ILL 40	COOPERS CREEK	2.25 MI S BRADFORD	60	32	1,920	700
SHEET SUBTOTAL						205,872	

MODEL D:\m\it... FILE NAME: S:\CENDRAFT\STDSER\USQUAD_068081-2018_BRIDGE_DECK_SEALING_2018\068081-PLANS.dgn

USER NAME = lababidism	DESIGNED -	REVISED -
	DRAWN -	REVISED -
PLOT SCALE = 32.3529 ' / in.	CHECKED -	REVISED -
PLOT DATE = 2/6/2018	DATE -	REVISED -

**STATE OF ILLINOIS
DEPARTMENT OF TRANSPORTATION**

SCHEDULE OF QUANTITIES			
SCALE:	SHEET	OF	SHEETS
	STA.		TO STA.

F.A. RTE.	SECTION	COUNTY	TOTAL SHEETS	SHEET NO.
VAR.	D4 BRIDGE DECK SEALING 2018	VARIOUS	11	9
			CONTRACT NO. 68DB1	
		ILLINOIS	FED. AID PROJECT	

CONCRETE SEALER-CONTINUED

SN	FacilityCarried	FeatureCrossed	Location	Length Total	Bridge Rdwy Width	Area (Sq Ft)	Parapet Area (Sq Sf)
0880025	ILL 40	SILVER CREEK	3.5 MI N OF BRADFORD	92.5	32	2,960	928
0880026	ILL 40	FOX CREEK	3 MI N OF BRADFORD	88	32	2,816	896
0880027	ILL 40	SPOON RIVER TRIB.	1.5 MI N OF BRADFORD	74	32	2,368	798
0880028	IL 91	PRINCE RUN TRIB	4 MI N OF PRINCEVILL	70.2	31.5	2,211	771
0880029	OSCEOLA ROAD	SPOON RIVER TRIB	0.8 MI N OF ILL 93	64	32	2,048	728
0940002	US 67	MIDDLE HEND'N CR	0.8 MI S OF ILL 135	125.9	32	4,029	1,161
0940016	ILL 94 & 135	HENDERSON CR	2 MI N LITTLE YORK	294	32	9,408	2,338
0940029	TR 232	FAP 313	2.5M SW OF GALESBUR	537	26.5	14,231	4,039
0940030	ILL 116	NEGRO CREEK	6 MI E OF ROSEVILLE	140	32.2	4,508	1,260
0940031	ILL 135	CEDAR CR OVERFLOW	.5 MI N LITTLE YORK	90	36	3,240	910
0940032	ILL 135	CEDAR CREEK	N EDGE LITTLE YORK	237	36	8,532	1,939
0940033	US 34 & 67 (SB)	BN RR (079039A)	0.8MI N JCT US 34&67	194	40	7,760	1,638
0940034	ILL. 164	CEDAR CREEK TRIB.	4 MI E OF COLDBROOK	59	32	1,888	693
0940035	SB US 67	PICAYUNE CREEK	4 MI N OF ROSEVILLE	86.7	38	3,295	887
0940037	SB US 67	BIG NEGRO CREEK	3 MI S OF IL116	87	56	4,872	889
0940038	NB US 67	BIG NEGRO CREEK	3 MI S ILL 116	87	38	3,306	889
0940039	NB US 67	SWAN CREEK	4.5 MI S ROSEVILLE	88.5	38	3,363	900
0940040	SB US 67	SWAN CREEK	4.5 MI S ROSEVILLE	88.5	38	3,363	900
0940041	US 34	US 67	SW EDGE OF MONMOUT	222	66	14,652	1,834
0940042	NB US 67	PICAYUNE CREEK	4 MI N OF ROSEVILLE	84.7	38	3,219	873
0940044	ILL 116	ELLISON CREEK	4 MI W OF ROSEVILLE	84	37.3	3,133	868
0940045	NB US 67	S. HENDERSON CREEK	2.8 MI S OF US 34	142.5	40	5,700	1,278
0940046	SB US 67	S. HENDERSON CREEK	2.8 MI S OF US 34	142.5	40	5,700	1,278
0940047	IL 135	JOHNS CREEK	1.5 MI S.LITTLE YORK	83.7	31.5	2,637	866
0940048	US 67	HENDERSON CREEK	2.4 MI S OF ILL 135	198.2	31.5	6,243	1,667
0940049	US 67	TOM'S CREEK	0.1 MI W OF ILL 135	88	32	2,816	896
0940050	OLD US 34	CEDAR CR TRIB	.5 MI E OF MONMOUTH	80	26	2,080	840
0940051	US 67	CEDAR CR	4 MI N OF MONMOUTH	231	36	8,316	1,897
SHEET SUBTOTAL						173,552	
TOTAL SQ FT						1,351,592	

MODEL D:\m\it FILE NAME: S:\CENDRAFT\STDSER\US50\AD_0860081-2018_BRIDGE_DECK_SEALING_2018\0860081-PLANS.dgn

USER NAME = lababidism	DESIGNED -	REVISED -
	DRAWN -	REVISED -
PLOT SCALE = 32.3529 ' / in.	CHECKED -	REVISED -
PLOT DATE = 2/6/2018	DATE -	REVISED -

**STATE OF ILLINOIS
DEPARTMENT OF TRANSPORTATION**

SCHEDULE OF QUANTITES

SCALE: SHEET OF SHEETS STA. TO STA.

F.A. RTE.	SECTION	COUNTY	TOTAL SHEETS	SHEET NO.
VAR.	D4 BRIDGE DECK SEALING 2018	VARIOUS	11	10
			CONTRACT NO. 68D81	
		ILLINOIS	FED. AID PROJECT	

TRAFFIC CONTROL AND PROTECTION, STANDARD 701201	
LOCATION	L SUM
JOBSITE	1
TOTAL	1

MOBILIZATION	
LOCATION	L SUM
JOBSITE	1
TOTAL	1

TRAFFIC CONTROL AND PROTECTION, STANDARD 701406	
LOCATION	L SUM
JOBSITE	1
TOTAL	1

TRAFFIC CONTROL AND PROTECTION, STANDARD 701456	
LOCATION	L SUM
JOBSITE	1
TOTAL	1

TRAFFIC CONTROL AND PROTECTION, STANDARD 701411	
LOCATION	EACH
JOBSITE	6
TOTAL	6

TRAFFIC CONTROL AND PROTECTION, STANDARD 701602	
LOCATION	L SUM
JOBSITE	1
TOTAL	1

MODEL D:\64\IT
 FILE NAME: S:\CENDRAFT\STDSERVIS\SQUAD_868DB1-2018_BRIDGE_DECK_SEALING_2018\868DB1-PLANS.dgn

USER NAME = lababidism	DESIGNED -	REVISED -
	DRAWN -	REVISED -
PLOT SCALE = 32.3529 ' / in.	CHECKED -	REVISED -
PLOT DATE = 2/6/2018	DATE -	REVISED -

STATE OF ILLINOIS
DEPARTMENT OF TRANSPORTATION

SCHEDULE OF QUANTITIES

SCALE: SHEET OF SHEETS STA. TO STA.

F.A. RTE.	SECTION	COUNTY	TOTAL SHEETS	SHEET NO.
VAR.	D4 BRIDGE DECK SEALING 2018	VARIOUS	11	11
			CONTRACT NO. 68DB1	
			ILLINOIS FED. AID PROJECT	