

04-27-2018 LETTING ITEM 093

STATE OF ILLINOIS
DEPARTMENT OF TRANSPORTATION

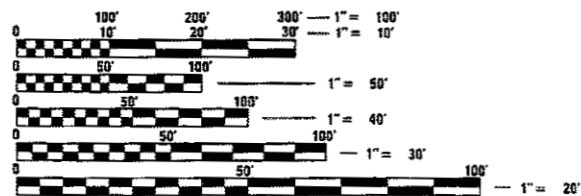
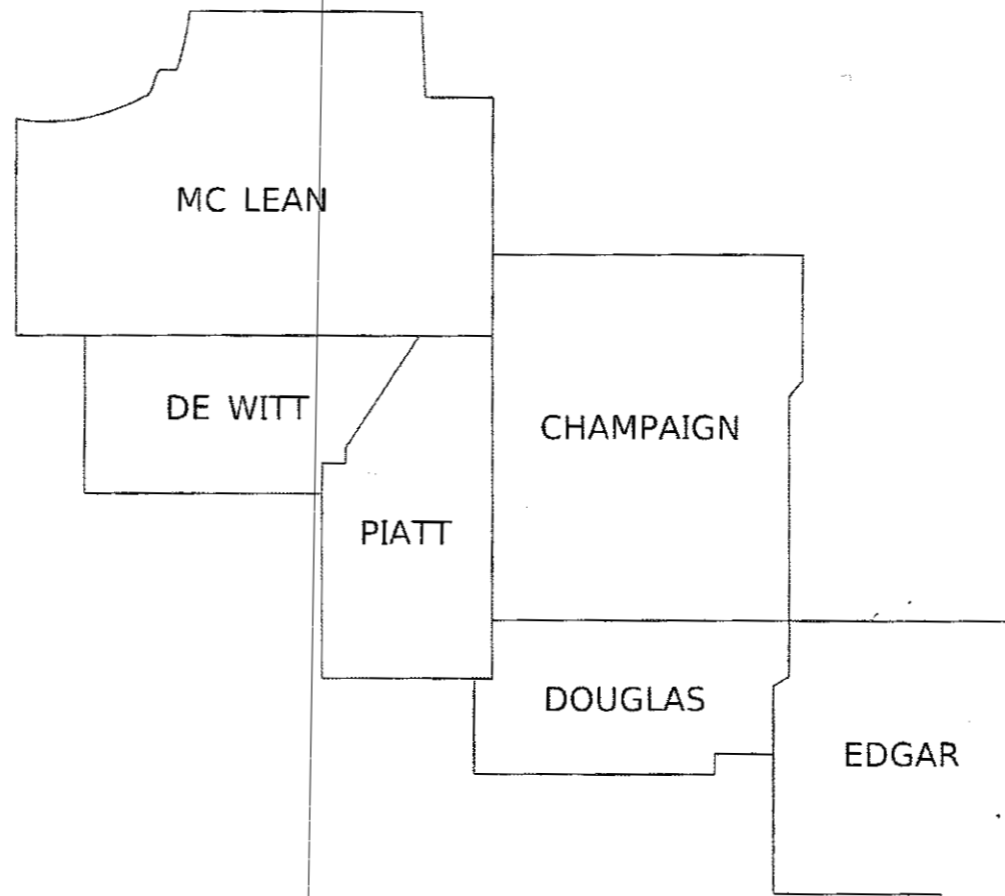
P.A. RTE.	SECTION	COUNTY	TOTAL SHEETS	SHEET NO.
VAR	D5 HSIP GR 2018-1	VAR	23	1
		ILLINOIS	CONTRACT NO. 70C85	

FOR INDEX OF SHEETS, SEE SHEET NO. 2

PROPOSED HIGHWAY PLANS

VARIOUS ROUTES
SECTION D5 HSIP GR 2018-1
GUARDRAIL
PROJECT HSIP-GUSL (743)
VARIOUS COUNTIES

C-95-036-18



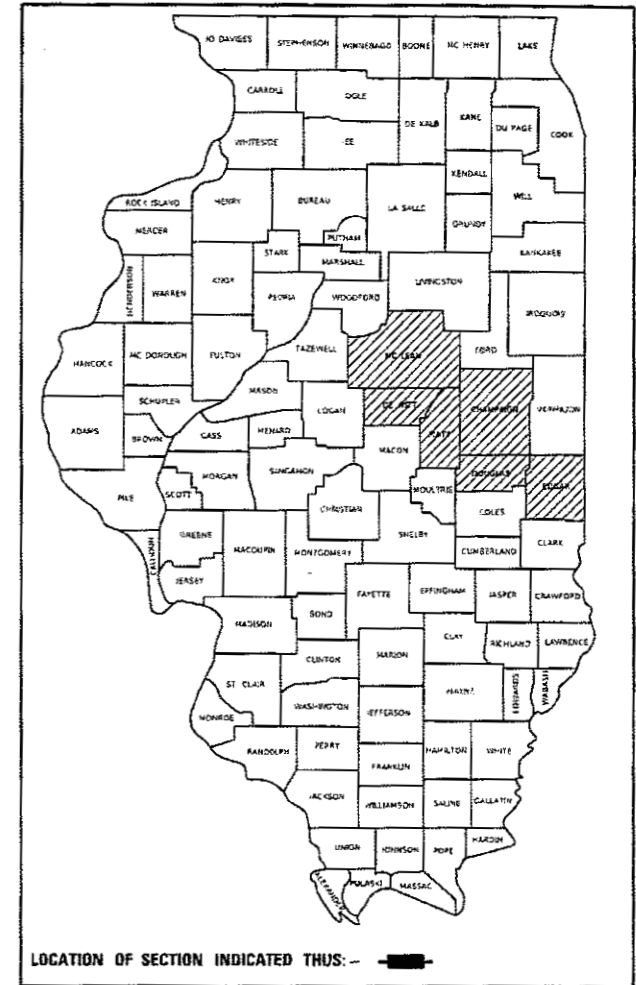
FULL SIZE PLANS HAVE BEEN PREPARED USING STANDARD ENGINEERING SCALES. REDUCED SIZED PLANS WILL NOT CONFORM TO STANDARD SCALES. IN MAKING MEASUREMENTS ON REDUCED PLANS, THE ABOVE SCALES MAY BE USED.

J.U.L.I.E.
JOINT UTILITY LOCATION INFORMATION FOR EXCAVATION
1-800-892-0123
OR 811

PROJECT ENGINEER: JASON STULTS
PHONE NUMBER: 217-465-4181

CONTRACT NO. 70C85

D-95-023-18



LOCATION OF SECTION INDICATED THUS: —■—

STATE OF ILLINOIS
DEPARTMENT OF TRANSPORTATION

SUBMITTED JANUARY 31, 2018
Kenneth A. Sarath
REGIONAL ENGINEER

MAR 23, 2018
Mark Paul
ENGINEER OF DESIGN AND ENVIRONMENT

MAR 23, 2018
Mark Paul
DIRECTOR OF HIGHWAYS PROJECT IMPLEMENTATION

PRINTED BY THE AUTHORITY
OF THE STATE OF ILLINOIS

INDEX OF SHEETS

SHEET NO.	DESCRIPTION
1	COVER SHEET
2	INDEX OF SHEETS
2	HIGHWAY STANDARDS
2	GENERAL NOTES
3 - 8	LOCATION MAPS
9 - 10	SUMMARY OF QUANTITIES
11 - 22	SCHEDULE OF QUANTITIES
23	TRAFFIC BARRIER TERMINAL TYPE 6A (SPECIAL) MOUNTING DETAILS

HIGHWAY STANDARDS

STANDARD NO.	DESCRIPTION
000001-06	STANDARD SYMBOLS, ABBREVIATIONS AND PATTERNS
001006	DECIMAL OF AN INCH AND OF A FOOT
6300001-12	STEEL PLATE BEAM GUARDRAIL
630101-10	STRONG POST GUARDRAIL ATTACHED TO CULVERT
630111	WEAK POST GUARDRAIL ATTACHED TO CULVERT
630116	BACK SIDE PROTECTION OF GUARDRAIL
630301-08	SHOULDER WIDENING FOR TYPE 1 (SPECIAL) GUARDRAIL TERMINALS
631006-08	TRAFFIC BARRIER TERMINAL, TYPE 1B
631011-10	TRAFFIC BARRIER TERMINAL, TYPE 2
631031-15	TRAFFIC BARRIER TERMINAL, TYPE 6
631032-09	TRAFFIC BARRIER TERMINAL, TYPE 6A
631033-07	TRAFFIC BARRIER TERMINAL, TYPE 6B
701001-02	OFF-RD OPERATIONS, 2L, 2W, MORE THAN 15' (4.5m) AWAY
701006-05	OFF-RD OPERATIONS, 2L, 2W, MORE THAN 15' (4.5m) TO 24" (600mm) FROM PAVEMENT EDGE
701201-04	LANE CLOSURE, 2L, 2W, DAY ONLY, FOR SPEEDS \geq 45 MPH
701301-04	LANE CLOSURE, 2L, 2W, SHORT TIME OPERATIONS
701421-08	LANE CLOSURE, MULTILANE, DAY OPERATIONS ONLY, FOR SPEEDS \geq 45 MPH TO 55 MPH
701426-09	LANE CLOSURE, MULTILANE, INTERMITTENT OR MOVING OPERATIONS, FOR SPEEDS \geq 45 MPH
701427-05	LANE CLOSURE, MULTILANE, INTERMITTENT OR MOVING OPERATIONS, FOR SPEEDS \leq 40 MPH
701456-05	PARTIAL EXIT RAMP CLOSURE FREEWAY/EXPRESSWAY
701501-06	URBAN LANE CLOSURE, 2L, 2W, UNDIVIDED
701601-09	URBAN LANE CLOSURE, MULTILANE, 1W OR 2W WITH NONTRAVERSABLE MEDIAN
701901-07	TRAFFIC CONTROL DEVICES
725001-01	OBJECT AND TERMINAL MARKERS
782006	GUARDRAIL AND BARRIER WALL REFLECTOR MOUNTING DETAILS

GENERAL NOTES

G.N.-100
ENGLISH UNITS OF MEASUREMENTS SHALL GOVERN OVER AND SUPERSEDE ANY METRIC UNITS SHOWN IN THIS CONTRACT. WHERE INCLUDED, METRIC UNITS ARE FOR INFORMATION ONLY.

G.N.-100A
ELECTRONIC FILES AND/OR ELECTRONIC SURVEY INFORMATION INCLUDING CADD FILES WILL NOT BE AVAILABLE TO THE CONTRACTOR.

G.N.-280
TEMPORARY EROSION CONTROL SEEDING IS INCLUDED IN THIS CONTRACT TO SEED DISTURBED EARTH DURING TIME PERIODS WHEN PERMANENT SEEDING IS NOT ALLOWED. SOME OR ALL OF THE TEMPORARY EROSION CONTROL SEEDING WILL BE DELETED IF IT IS POSSIBLE TO PLACE PERMANENT SEEDING ON EARTH AT THE TIME OF THEIR COMPLETION.

G.N.-631
IF THE CONTRACTOR ELECTS TO USE THE ALTERNATE MOUNTING METHOD OF THRU DRILLING THE MOUNTIN HOLES FOR THE TRAFFIC BARRIER TERMINALS, TYPE 6, THE HOLES SHALL BE DRILLED USING A CORE DRILL. A HAMMER DRILL WILL NOT BE ALLOWED.

G.N.-X633
THE PROPOSED STEEL PLATE BEAM GUARDRAIL (SHORT RADIUS) SHALL BE INSTALLED AT THE SAME RADIUS AND THE EXISTING STEEL PLATE BEAM GUARDRAIL (SHORT RADIUS) TO BE REMOVED.

NO COMMITMENTS

MODEL: \$MODELNAME\$
FILE NAME: p:\11\04E@DIRTEG\Illinois.gov\FM\DOT\Documents\DOT_2018\Submittal_2018\Projects\0570C85\CADD\Drawings\0570C85-23c-generals.dgn

USER NAME = plersonbr	DESIGNED -	REVISED -
	DRAWN -	REVISED -
PLOT SCALE = 40.0000' / in.	CHECKED -	REVISED -
PLOT DATE = 2/1/2018	DATE -	REVISED -

**STATE OF ILLINOIS
DEPARTMENT OF TRANSPORTATION**

**INDEX OF SHEETS, HIGHWAY STANDARDS
& GENERAL NOTES**

SCALE: NONE SHEET 1 OF 1 SHEETS STA. TO STA.

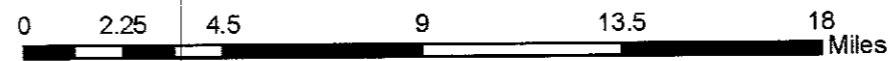
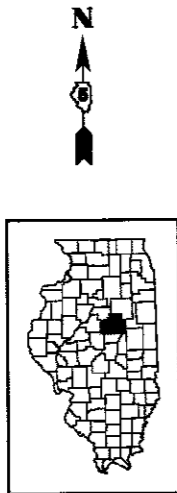
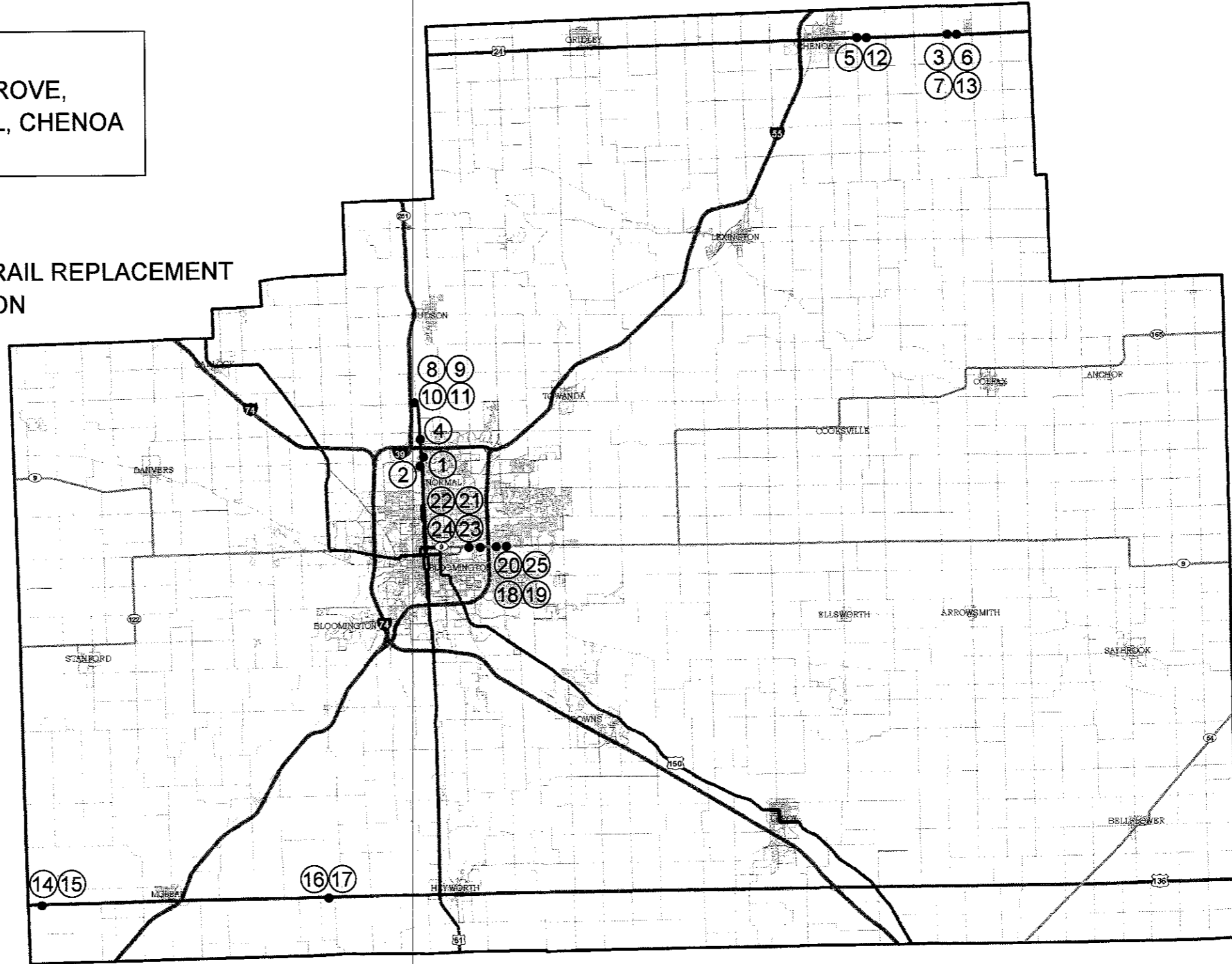
F.A. RTE.	SECTION	COUNTY	TOTAL SHEETS	SHEET NO.
VAR	D5 HSIP GR 2018-1	VAR	23	2
CONTRACT NO. 70C85				
ILLINOIS FED. AID PROJECT				

REV

MCLEAN COUNTY

TOWNSHIPS:
MOUNT HOPE, FUNKS GROVE,
BLOOMINGTON, NORMAL, CHENOA
& YATES

— GUARDRAIL REPLACEMENT LOCATION



MODEL - MODEL NAMES
 FILE NAME - p:\11\084\BID\BID\TEG_IL\mcs\p\p\DOT\Documents\DOT_Offices\District 5\Projects\DS70C85\CAD\Draws\CAD\Draws\570C85-SP1-BC_mape.dwg

USER NAME = piersonbr	DESIGNED -	REVISED -
PLOT SCALE = 40,0000' / in.	DRAWN -	REVISED -
PLOT DATE = 2/1/2018	CHECKED -	REVISED -
	DATE -	REVISED -

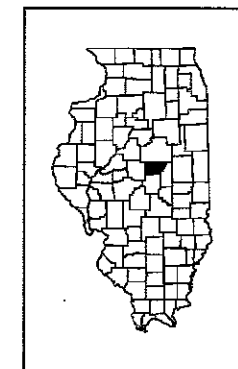
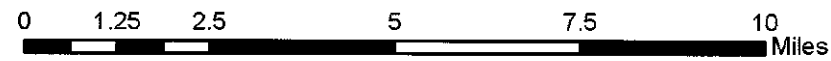
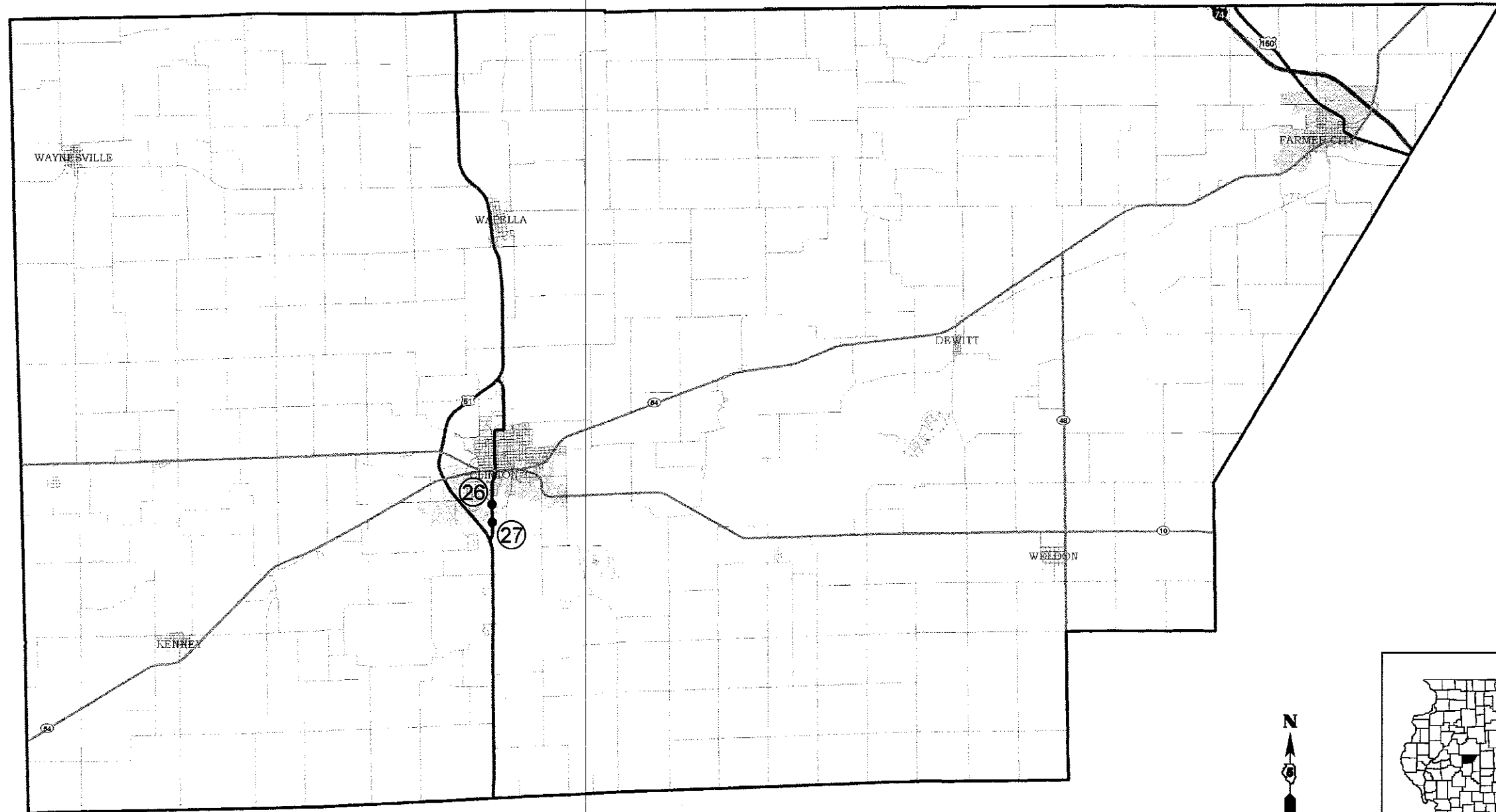
**STATE OF ILLINOIS
DEPARTMENT OF TRANSPORTATION**

**LOCATION MAP
MCLEAN COUNTY**

SCALE: SHEET 1 OF 6 SHEETS STA. TO STA.

F.A. RTE.	SECTION	COUNTY	TOTAL SHEETS	SHEET NO.
VAR	D5 HSP GR 2018-1	VAR	23	3
CONTRACT NO. 70C85				
ILLINOIS FED. AID PROJECT				

DEWITT COUNTY



TOWNSHIPS:
TEXAS

— GUARDRAIL REPLACEMENT LOCATION

MODEL: S:\MODEL\NAMES
 FILE NAME: D:\110848BID\WTEG_IL\GIS\DOT\Documents\DOT_Offices\District_5\Project\GIS\70C85\CAD\DATA\CAD\Sheets\DS70C85-rhloc.mxd

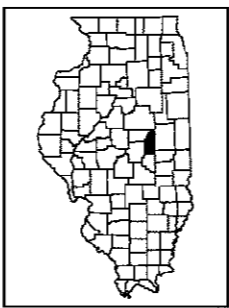
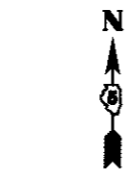
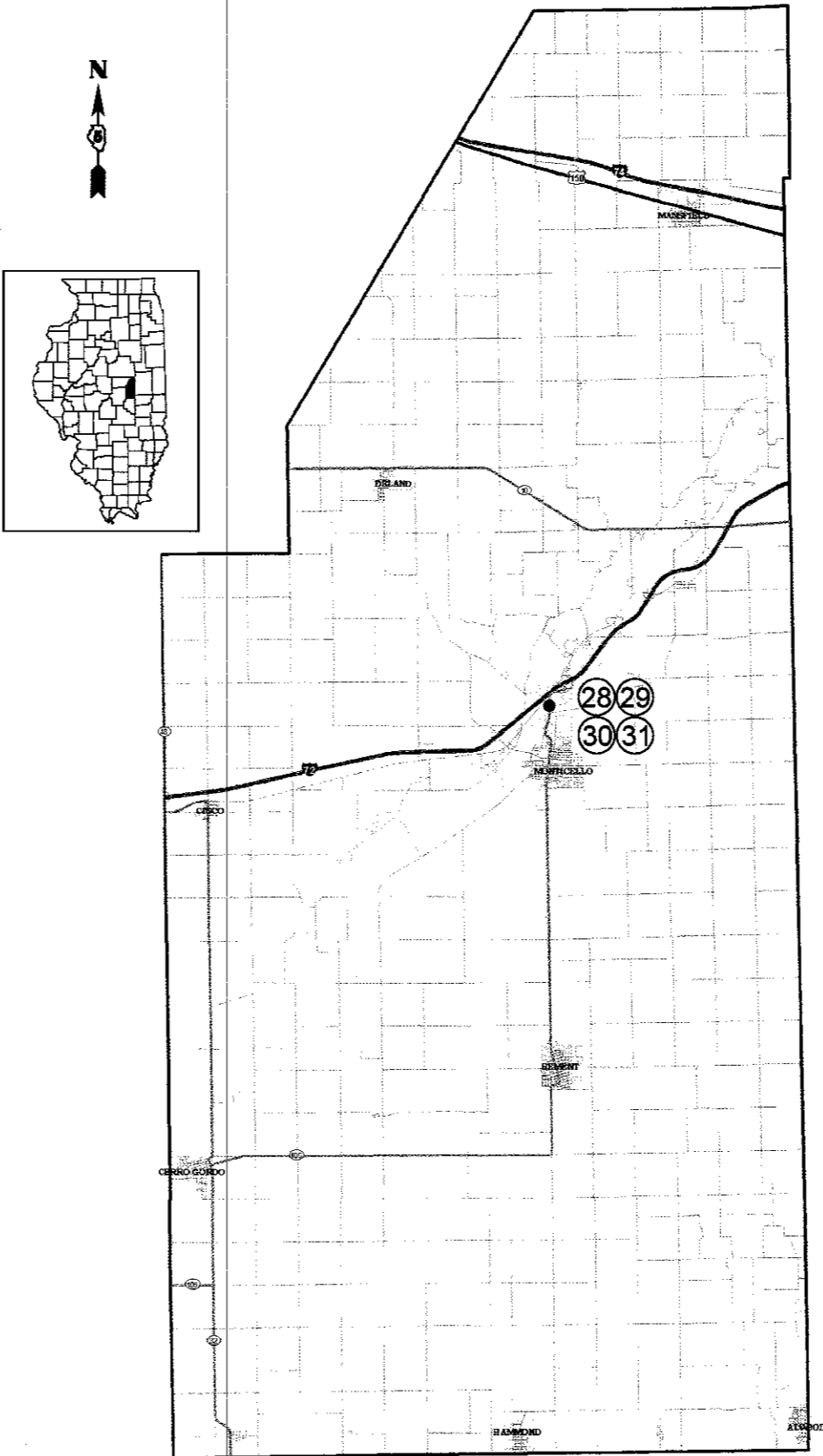
USER NAME = p1ersonbr	DESIGNED -	REVISED -
	DRAWN -	REVISED -
PLOT SCALE = 40,0000' / in.	CHECKED -	REVISED -
PLOT DATE = 2/1/2018	DATE -	REVISED -

STATE OF ILLINOIS
DEPARTMENT OF TRANSPORTATION

LOCATION MAP DEWITT COUNTY	
SCALE:	SHEET 2 OF 6 SHEETS STA. TO STA.

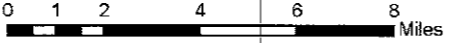
F.A. RTE.	SECTION	COUNTY	TOTAL SHEETS	SHEET NO.
VAR	D5 HSIP GR 2018-1	VAR	23	4
			CONTRACT NO. 70C85	
ILLINOIS FED. AID PROJECT				

PIATT COUNTY



— GUARDRAIL REPLACEMENT LOCATION

TOWNSHIP:
MONTICELLO



MODEL: S:\MODEL\NAMES
FILE NAME: p:\110848\BID\ITTEG Illinois.gov\FWD\DOT\Documents\DOT Office\0101\refc SUP\Projects\0570C85\CAD\Drawings\0570C85-INT-ENC_maps.dgn

USER NAME = plersonbr	DESIGNED -	REVISED -
	DRAWN -	REVISED -
PLOT SCALE = 40,0000' / in.	CHECKED -	REVISED -
PLOT DATE = 2/1/2018	DATE -	REVISED -

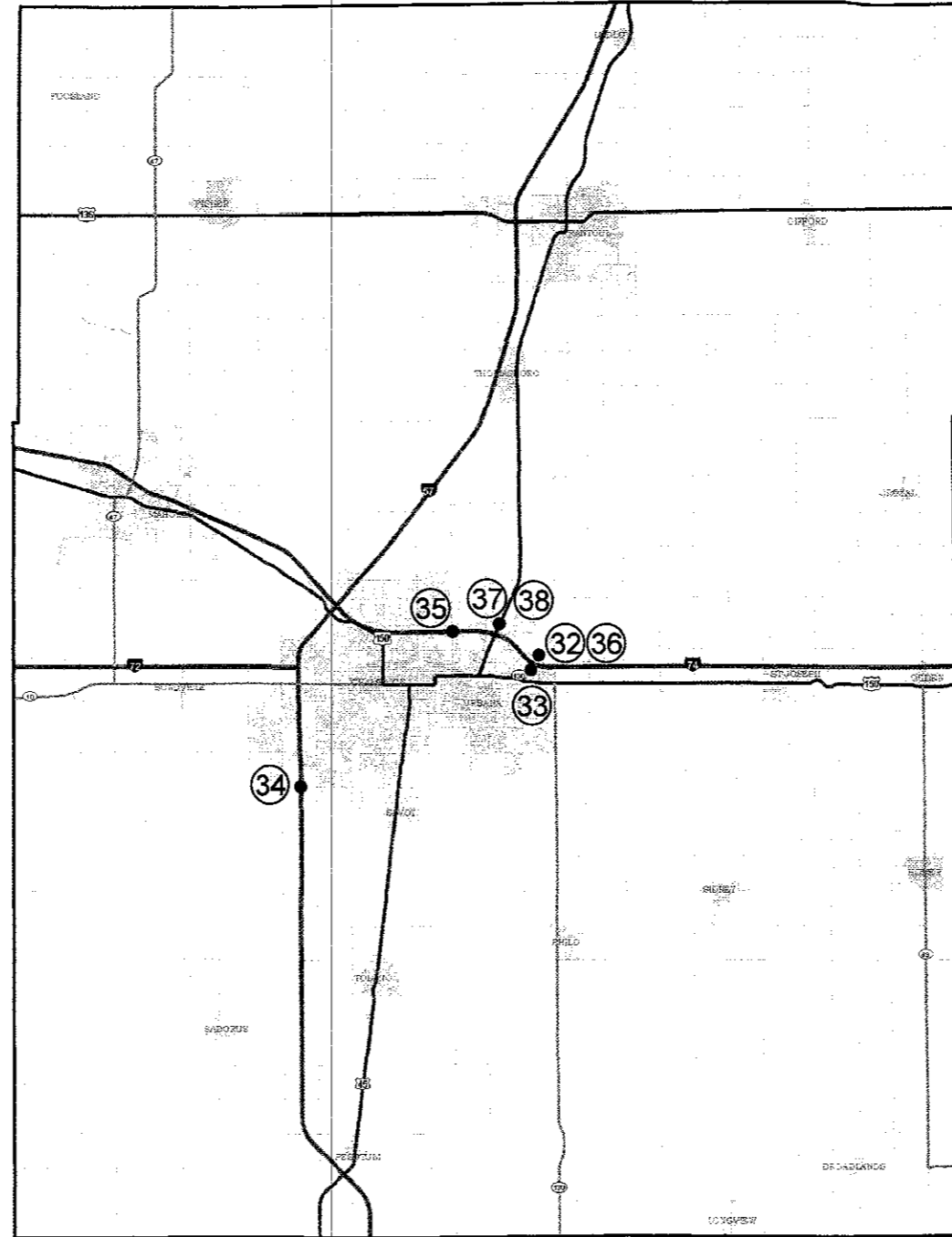
**STATE OF ILLINOIS
DEPARTMENT OF TRANSPORTATION**

**LOCATION MAP
PIATT COUNTY**

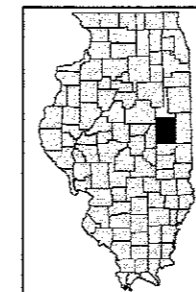
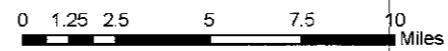
SCALE: SHEET 3 OF 6 SHEETS STA. TO STA.

F.A. RTE.	SECTION	COUNTY	TOTAL SHEETS	SHEET NO.
VAR	D5 HSIP GR 2018-1	VAR	23	5
			CONTRACT NO. 70C85	
ILLINOIS FED. AID PROJECT				

CHAMPAIGN COUNTY



— GUARDRAIL REPLACEMENT LOCATION



TOWNSHIPS:
 CHAMPAIGN, CHAMPAIGN CITY
 & CUNNINGHAM

MODEL: SMOODELNAME\$
 FILE: NAME: p:\W\0848\B\0848\INTEG.illinois.gov\PW\DOT\Documents\DOT_Offices\District_3\Projects\070C85\CAD\Drawings\CAD\Sheet\070C85-rk-loc_ngrs.dgn

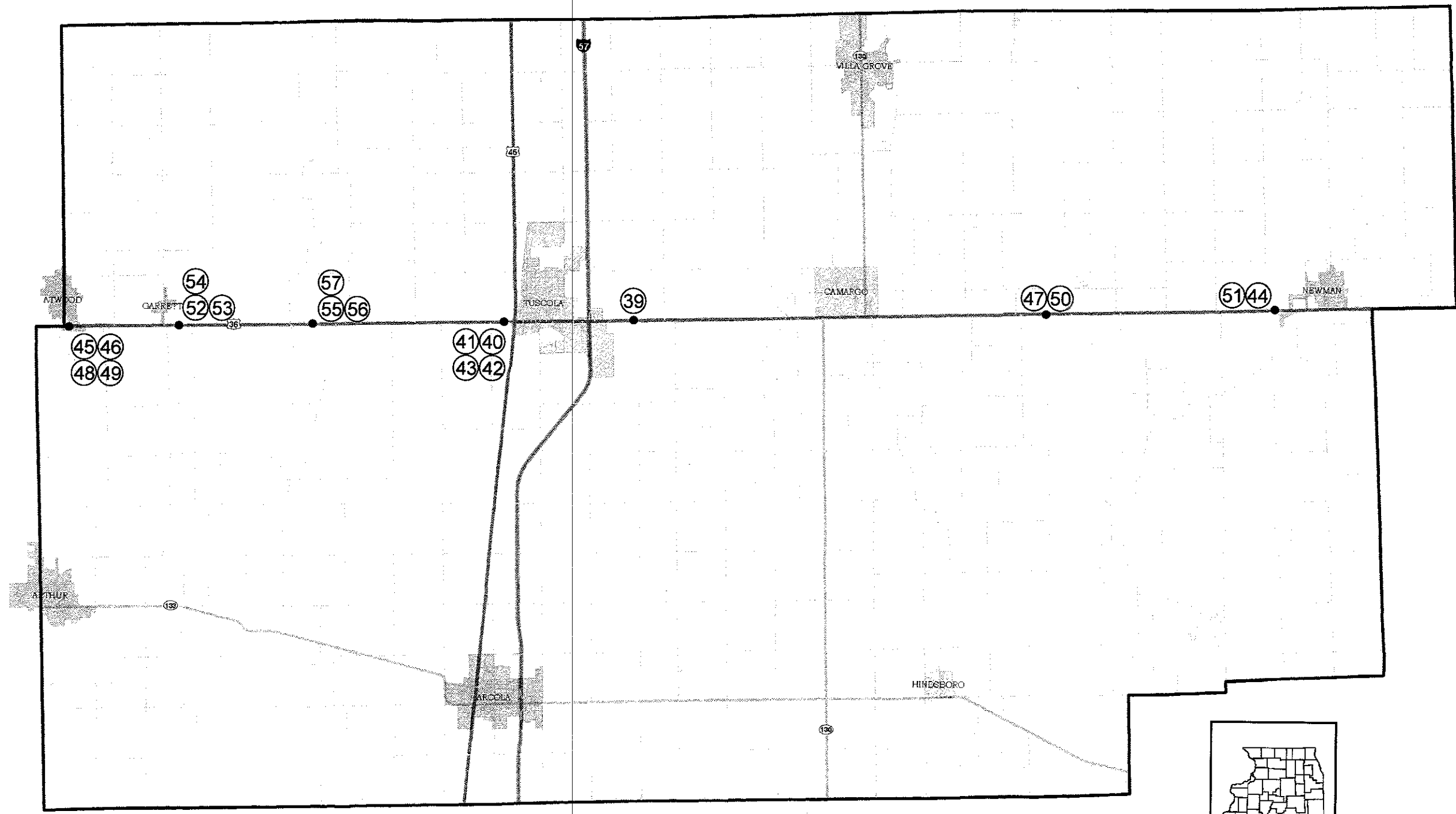
USER NAME = plersonbr	DESIGNED -	REVISED -
	DRAWN -	REVISED -
PLOT SCALE = 40,000' / in.	CHECKED -	REVISED -
PLOT DATE = 2/1/2018	DATE -	REVISED -

**STATE OF ILLINOIS
 DEPARTMENT OF TRANSPORTATION**

LOCATION MAP CHAMPAIGN COUNTY	
SCALE:	SHEET 4 OF 6 SHEETS STA. TO STA.

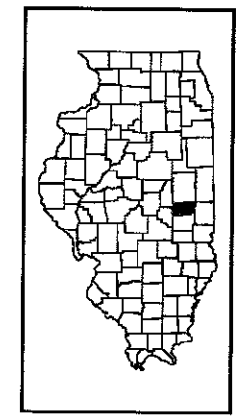
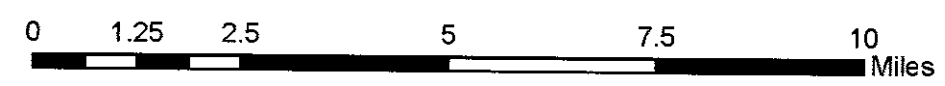
F.A. RTE.	SECTION	COUNTY	TOTAL SHEETS	SHEET NO.
VAR	DS HSIP GR 2018-1	VAR	23	6
			CONTRACT NO. 70C85	
ILLINOIS FED. AID PROJECT				

DOUGLAS COUNTY



— GUARDRAIL REPLACEMENT LOCATION

TOWNSHIPS:
ARCOLA & TUSCOLA



MODEL NAME: piersonbr
 FILE NAME: piersonbr\DOT\Documents\DOT_offices\Subarea_3\Projects\DS70655\CADD\Map\CAD\Sheet\DS70655-sh1-ib.mxd.dgn

USER NAME = piersonbr	DESIGNED -	REVISED -
PLOT SCALE = 40,0000' / in.	DRAWN -	REVISED -
PLOT DATE = 2/1/2018	CHECKED -	REVISED -
	DATE -	REVISED -

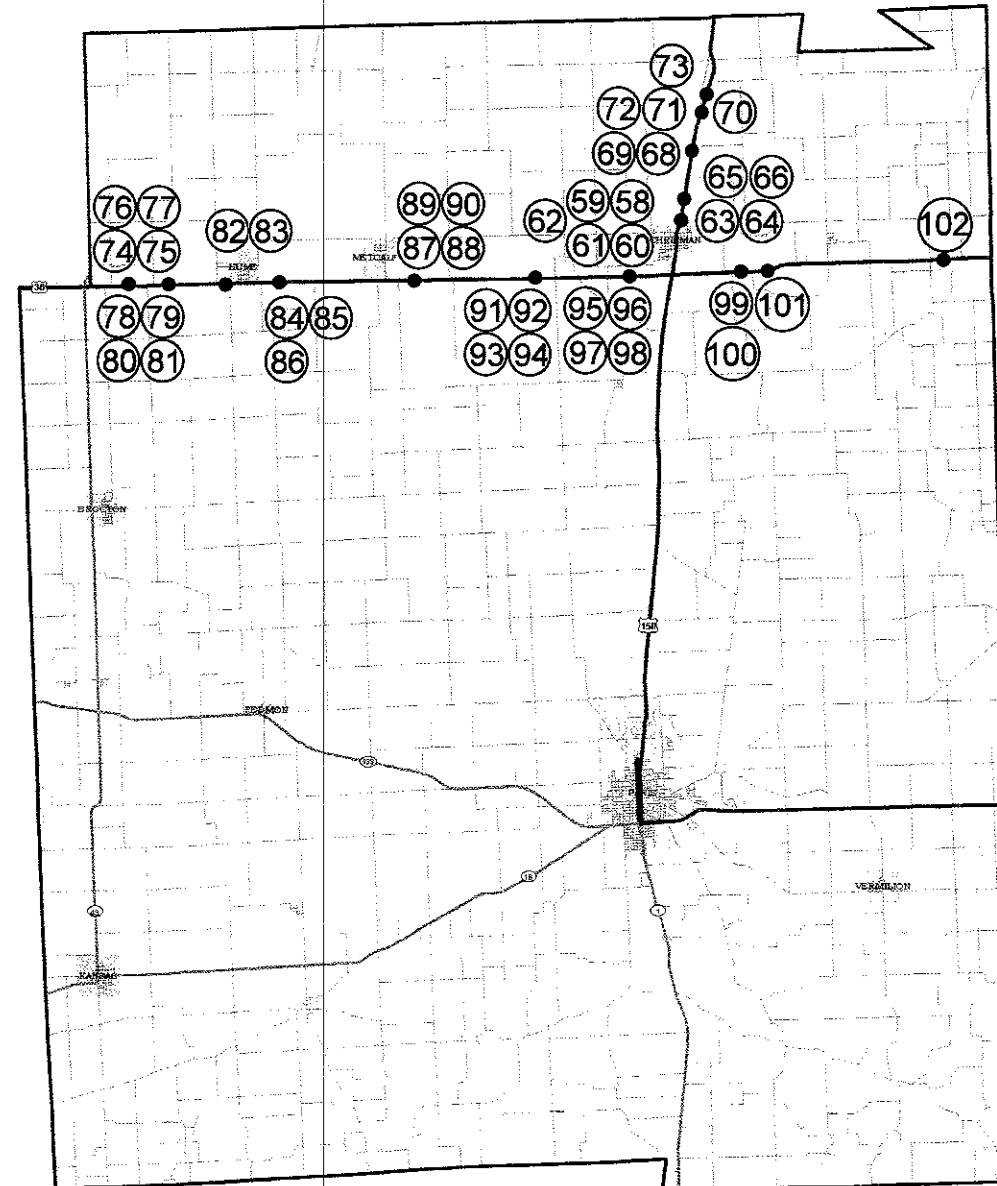
STATE OF ILLINOIS
DEPARTMENT OF TRANSPORTATION

LOCATION MAP
DOUGLAS COUNTY

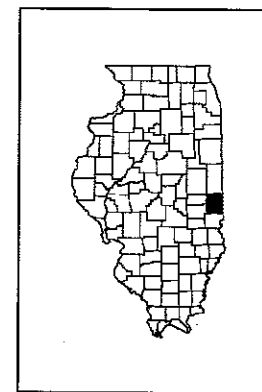
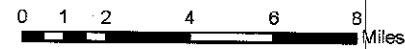
SCALE: SHEET 5 OF 6 SHEETS STA. TO STA.

F.A. RTE.	SECTION	COUNTY	TOTAL SHEETS
VAR	D5 HSP GR 2018-1	VAR	23
			CONTRACT NO. 70
ILLINOIS FED. AID PROJECT			

EDGAR COUNTY



— GUARDRAIL REPLACEMENT LOCATION



TOWNSHIP:
PRAIRIE, BROUILIETTS CREEK, ROSS,
EDGAR, SHILOH, YOUNG AMERICA

MODEL: \\MODELS\NAME#
 FILE NAME: \\Z:\11\08\EDM\ITEG\Illinois\gov\PHUDOT\Documents\DOT_Offices\Digital_3\Project\570235\CAD\Sheet\570235-sh-6c.mxd

USER NAME = plersonbr	DESIGNED -
DRAWN -	REVISOR -
PLOT SCALE = 40.0000" / in.	CHECKED -
PLOT DATE = 2/1/2018	DATE -

REVISOR -
REVISOR -
REVISOR -

**STATE OF ILLINOIS
DEPARTMENT OF TRANSPORTATION**

**LOCATION MAP
EDGAR COUNTY**

SCALE: SHEET 6 OF 6 SHEETS STA. TO STA.

F.A. RTE.	SECTION	COUNTY	TOTAL SHEETS	SHEET NO.
VAR	D5 HSIP GR 2018-1	VAR	23	8
CONTRACT NO. 70C85			ILLINOIS FED. AID PROJECT	

SUMMARY OF QUANTITIES

LOCATION OF WORK:

VARIOUS
ROUTES

VARIOUS
ROUTES

VARIOUS
COUNTIES

VARIOUS
COUNTIES

FUNDING BREAKOUT:

URBAN
90% FED
10% STATE
0021

RURAL
90% FED
10% STATE
0021

CONSTRUCTION TYPE CODE:

CODE NO	ITEM	UNIT	TOTAL QUANTITY		
20400800	FURNISHED EXCAVATION	CU YD	705.0	135.0	570.0
25000210	SEEDING, CLASS 2A	ACRE	1.00	0.25	0.75
25000350	SEEDING, CLASS 7	ACRE	3.00	0.75	2.25
25000400	NITROGEN FERTILIZER NUTRIENT	POUND	87.0	18.0	69.0
25000500	PHOSPHORUS FERTILIZER NUTRIENT	POUND	87.0	18.0	69.0
25000600	POTASSIUM FERTILIZER NUTRIENT	POUND	87.0	18.0	69.0
25100115	MULCH, METHOD 2	ACRE	1.00	0.25	0.75
28000250	TEMPORARY EROSION CONTROL SEEDING	POUND	376.0	76.0	300.0
63000001	STEEL PLATE BEAM GUARDRAIL, TYPE A, 6 FOOT POSTS	FOOT	7,325.0	2600.0	4725.0
63000003	STEEL PLATE BEAM GUARDRAIL, TYPE A, 9 FOOT POSTS	FOOT	850.0	0.0	850.0
63000007	STEEL PLATE BEAM GUARDRAIL, TYPE B, 6 FOOT POSTS	FOOT	275.0	0.0	275.0
63000030	STRONG POST GUARDRAIL ATTACHED TO CULVERT	FOOT	212.5	0.0	212.5
63000035	BACK SIDE PROTECTION OF GUARDRAIL	FOOT	312.5	0.0	312.5
63000050	WEAK POST GUARDRAIL ATTACHED TO CULVERT CASE I	FOOT	50.0	0.0	50.0

MODEL: \\MODELS\MANES
FILE NAME: \\P\1\0\FEB\BUNTEG\Illinois.gov\FWIDOT\Documents\BIDOT - Offices\District 3\Projects\0570C85\CAD\Drawings\CADsheets\0570C85-shs-S001.dwg

USER NAME = plersonbr	DESIGNED -	REVISED -
	DRAWN -	REVISED -
PLOT SCALE = 40.0000' / in.	CHECKED -	REVISED -
PLOT DATE = 2/1/2018	DATE -	REVISED -

**STATE OF ILLINOIS
DEPARTMENT OF TRANSPORTATION**

SUMMARY OF QUANTITIES

SCALE: NONE SHEET 1 OF 2 SHEETS STA. TO STA.

F.A. RTE.	SECTION	COUNTY	TOTAL SHEETS	SHEET NO.
VAR	D5 HSIP GR 2018-1	VAR	23	9
CONTRACT NO. 70C85				
ILLINOIS FED. AID PROJECT				

SUMMARY OF QUANTITIES

LOCATION OF WORK:

VARIOUS ROUTES

VARIOUS ROUTES

VARIOUS COUNTIES

VARIOUS COUNTIES

FUNDING BREAKOUT:

URBAN
90% FED
10% STATE
0021

RURAL
90% FED
10% STATE
0021

CONSTRUCTION TYPE CODE:

CODE NO	ITEM	UNIT	TOTAL QUANTITY		
63100041	TRAFFIC BARRIER TERMINAL, TYPE 1B	EACH	8.0	0.0	8.0
63100045	TRAFFIC BARRIER TERMINAL, TYPE 2	EACH	28.0	16.0	12.0
63100085	TRAFFIC BARRIER TERMINAL, TYPE 6	EACH	42.0	12.0	30.0
63100089	TRAFFIC BARRIER TERMINAL, TYPE 6B	EACH	8.0	0.0	8.0
63100167	TRAFFIC BARRIER TERMINAL, TYPE 1 (SPECIAL) TANGENT	EACH	56.0	17.0	39.0
63100169	TRAFFIC BARRIER TERMINAL, TYPE 1 (SPECIAL) FLARED	EACH	55.0	9.0	46.0
63200310	GUARDRAIL REMOVAL	FOOT	18368.0	4497.5	13870.5
67100100	MOBILIZATION	L SUM	1.0	0.2	0.8
72501000	TERMINAL MARKER - DIRECT APPLIED	EACH	116.0	26.0	90.0
78200005	GUARDRAIL REFLECTORS, TYPE A	EACH	286.0	90.0	196.0
X6310088	TRAFFIC BARRIER TERMINAL TYPE 6A (SPECIAL)	EACH	10.0	0.0	10.0
X6310214	TRAFFIC BARRIER TERMINAL, TYPE 6 (SPECIAL)	EACH	1.0	0.0	1.0
X6330725	STEEL PLATE BEAM GUARDRAIL (SHORT RADIUS)	FOOT	237.5	0.0	237.5
X7010216	TRAFFIC CONTROL AND PROTECTION, (SPECIAL)	L SUM	1.0	0.2	0.8

14

MODEL: P:\MODEL\NAME
 FILE NAME: P:\PROJECTS\70CB5\DRAWINGS\DOT OFFICES\DOT\Documents\DOT OFFICES\DOT\70CB5-RPT-500.dgn

USER NAME = plersonbr	DESIGNED -	REVISED -
	DRAWN -	REVISED -
PLOT SCALE = 40.0000 1 / in.	CHECKED -	REVISED -
PLOT DATE = 2/1/2018	DATE -	REVISED -

STATE OF ILLINOIS
DEPARTMENT OF TRANSPORTATION

SUMMARY OF QUANTITIES

SCALE: NONE SHEET 2 OF 2 SHEETS STA. TO STA.

F.A. RTE.	SECTION	COUNTY	TOTAL SHEETS	SHEET NO.
VAR	D5 HSIP GR 2018-1	VAR	23	10
CONTRACT NO. 70CB5			ILLINOIS FED. AID PROJECT	

REV

SCHEDULE OF QUANTITIES MCLEAN COUNTY

SHEET 1 OF 2

GUARDRAIL

LOCATION	ROUTE	URBAN/ RURAL	LATITUDE	LONGITUDE	SLD STA	DIR	LANE	DESCRIPTION	63200310	63000001	63000003	63000007	X6330725	63000030	63000050	63000035	78200005
									GR REM	SPBGR TY A 6 FT	SPBGR TY A 9 FT	SPBGR TY B 6 FT	SPBGR (SR)	SPGR ATT TO CULV	WPGR ATT CULV C1	BS PROT OF GR	GR REF TY A
									FOOT	FOOT	FOOT	FOOT	FOOT	EACH	FOOT	FOOT	EACH
1	US 51 B	URBAN	40.538294	-88.996069	1.77	NB	PL	Whole (S of FAI 55)	458.0	500.0							8.0
2	US 51 B	URBAN	40.537319	-88.996222	1.84	SB	DL	Appr (S of FAI 55)	215.0	212.5							4.0
3	US 24	RURAL	40.742320	-88.638204	18.29	EB	DL	Dep SN 057-0230	132.4	0.0							1.0
4	US 51 B	URBAN	40.541019	-88.996436	1.59	SB	DL	Whole (N of FAI 55)	190.0	150.0							3.0
5	US 24	RURAL	40.741713	-88.698755	15.15	EB	DL	Dep SN 057-0071	188.3	0.0							1.0
6	US 24	RURAL	40.742431	-88.639994	18.18	WB	DL	Dep SN 057-0230	132.5	0.0							1.0
7	US 24	RURAL	40.742295	-88.640016	18.18	EB	DL	Appr SN 057-0230	194.9	37.5							2.0
8	US 51 B	URBAN	40.561456	-89.001333	0.05	WB	DL	Appr SN 057-0213	212.5	125.0							3.0
9	US 51 B	URBAN	40.561409	-89.003250	0.06	WB	DL	Dep SN 057-0213	87.5	50.0							2.0
10	US 51 B	URBAN	40.561157	-89.003687	0.05	EB	DL	Appr SN 057-0213	212.5	100.0							3.0
11	US 51 B	URBAN	40.561188	-89.001770	0.06	EB	DL	Dep SN 057-0213	87.5	75.0							2.0
12	US 24	RURAL	40.741822	-88.699830	15.05	WB	DL	Dep SN 057-0071	188.3	0.0							1.0
13	US 24	RURAL	40.742458	-88.638137	18.29	WB	DL	Appr SN 057-0230	194.9	37.5							2.0
SUB TOTALS =									2,494.3	1,287.5	0.0	0.0	0.0	0.0	0.0	0.0	33.0
14	US 136	RURAL	40.310869	-89.256325	0.29	WB	DL	SN 057-8006	650.0	25.0	512.5						6.0
15	US 136	RURAL	40.310756	-89.257417	0.29	EB	DL	SN 057-8006	387.5	25.0	337.5						5.0
*16	US 136	RURAL	40.312008	-89.066511	10.45	WB	DL	SN 057-8018	225.0	125.0							4.0
*17	US 136	RURAL	40.311903	-89.066361	10.45	EB	DL	SN 057-8018	150.0	125.0							4.0
18	IL 9	URBAN	40.488411	-88.946378	19.57	WB	DL	Sign Truss L019.60	125.0	37.5							4.0
**19	IL 9	URBAN	40.488288	-88.950344	19.36	WB	DL	Sign Truss	137.5	100.0							4.0
**20	IL 9	URBAN	40.488376	-88.951762	19.29	WB	DL	Sign Truss L019.30	125.0	37.5							4.0
**21	IL 9	URBAN	40.488397	-88.955433	19.07	WB	DL	Sign Truss	137.5	62.5							4.0
22	IL 9	URBAN	40.488069	-88.958325	18.91	EB	DL	Sign Truss	137.5	87.5							4.0
23	IL 9	URBAN	40.488061	-88.955353	19.07	EB	DL	Sign Truss R019.00	137.5	37.5							4.0
24	IL 9	URBAN	40.488044	-88.953708	19.15	EB	DL	Sign Truss R019.20	125.0	37.5							4.0
25	IL 9	URBAN	40.488019	-88.950733	19.34	EB	DL	Sign Truss R019.40	137.5	62.5							4.0
SUB TOTALS =									2,475.0	762.5	850.0	0.0	0.0	0.0	0.0	0.0	51.0

* Location of approach terminal 162.5 ft from midpoint of headwall
 ** SPBGR TA 6 ft to be placed above culvert section

MCLEAN URBAN TOTALS =	2525.5	1675.0	0.0	0.0	0.0	0.0	0.0	0.0	57.0
MCLEAN RURAL TOTALS =	2443.8	375.0	850.0	0.0	0.0	0.0	0.0	0.0	27.0
MCLEAN TOTALS =	4969.3	2050.0	850.0	0.0	0.0	0.0	0.0	0.0	84.0

TERMINALS

LOCATION	ROUTE	URBAN/ RURAL	LATITUDE	LONGITUDE	SLD STA	DIR	LANE	DESCRIPTION	63100045	63100085	63100089	X6310214	X6310088	63100041	63100167	63100169	72501000
									TBT TY 2 EACH	TBT TY 6 EACH	TBT TY 6B EACH	TBT TY6 SPL EACH	TBT T6A SPL EACH	TBT TY 1B EACH	TBT TY 1 (SPL) TAN EACH	TBT TY 1 (SPL) FLR EACH	TERM MARK - DA EACH
1	US 51 B	URBAN	40.538294	-88.996069	1.77	NB	PL	Whole (S of FAI 55)	1.0								1.0
2	US 51 B	URBAN	40.537319	-88.996222	1.84	SB	DL	Appr (S of FAI 55)	1.0							1.0	1.0
3	US 24	RURAL	40.742320	-88.638204	18.29	EB	DL	Dep SN 057-0230		1.0						1.0	1.0
4	US 51 B	URBAN	40.541019	-88.996436	1.59	SB	DL	Whole (N of FAI 55)	1.0							1.0	1.0
5	US 24	RURAL	40.741713	-88.698755	15.15	EB	DL	Dep SN 057-0071					1.0			1.0	1.0
6	US 24	RURAL	40.742431	-88.639994	18.18	WB	DL	Dep SN 057-0230		1.0						1.0	1.0
7	US 24	RURAL	40.742295	-88.640016	18.18	EB	DL	Appr SN 057-0230		1.0						1.0	1.0
8	US 51 B	URBAN	40.561456	-89.001333	0.05	WB	DL	Appr SN 057-0213		1.0						1.0	1.0
9	US 51 B	URBAN	40.561409	-89.003250	0.06	WB	DL	Dep SN 057-0213	1.0	1.0							
10	US 51 B	URBAN	40.561157	-89.003687	0.05	EB	DL	Appr SN 057-0213		1.0						1.0	1.0
11	US 51 B	URBAN	40.561188	-89.001770	0.06	EB	DL	Dep SN 057-0213	1.0	1.0							
12	US 24	RURAL	40.741822	-88.699830	15.05	WB	DL	Dep SN 057-0071					1.0			1.0	1.0
13	US 24	RURAL	40.742458	-88.638137	18.29	WB	DL	Appr SN 057-0230		1.0						1.0	1.0
SUB TOTALS =									5.0	8.0	0.0	0.0	0.0	0.0	1.0	10.0	11.0
14	US 136	RURAL	40.310869	-89.256325	0.29	WB	DL	SN 057-8006							2.0		2.0
15	US 136	RURAL	40.310756	-89.257417	0.29	EB	DL	SN 057-8006							2.0		2.0
*16	US 136	RURAL	40.312008	-89.066511	10.45	WB	DL	SN 057-8018							2.0		2.0
*17	US 136	RURAL	40.311903	-89.066361	10.45	EB	DL	SN 057-8018							2.0		2.0
18	IL 9	URBAN	40.488411	-88.946378	19.57	WB	DL	Sign Truss L019.60	1.0						1.0		1.0
**19	IL 9	URBAN	40.488288	-88.950344	19.36	WB	DL	Sign Truss	1.0						1.0		1.0
**20	IL 9	URBAN	40.488376	-88.951762	19.29	WB	DL	Sign Truss L019.30	1.0						1.0		1.0
**21	IL 9	URBAN	40.488397	-88.955433	19.07	WB	DL	Sign Truss	1.0						1.0		1.0
22	IL 9	URBAN	40.488069	-88.958325	18.91	EB	DL	Sign Truss	1.0						1.0		1.0
23	IL 9	URBAN	40.488061	-88.955353	19.07	EB	DL	Sign Truss R019.00	1.0						1.0		1.0
24	IL 9	URBAN	40.488044	-88.953708	19.15	EB	DL	Sign Truss R019.20	1.0						1.0		1.0
25	IL 9	URBAN	40.488019	-88.950733	19.34	EB	DL	Sign Truss R019.40	1.0						1.0		1.0
SUB TOTALS =									8.0	0.0	0.0	0.0	0.0	0.0	16.0	0.0	16.0

* Location of approach terminal 162.5 ft from midpoint of headwall
 ** SPBGR TA 6 ft to be placed above culvert section

MCLEAN URBAN TOTALS =	13.0	4.0	0.0	0.0	0.0	0	9.0	4.0	13
MCLEAN RURAL TOTALS =	0.0	4.0	0.0	0.0	2.0	0	8.0	6.0	14
MCLEAN TOTALS =	13.0	8.0	0.0	0.0	2.0	0.0	17.0	10.0	27.0

MODEL: \\MODELNAME
 FILE NAME: \\FILENAME
 PROJECT: \\PROJECT
 OFFICE: \\OFFICE
 DRAWING: \\DRAWING
 DATE: \\DATE

USER NAME = p1ersonbr	DESIGNED -	REVISED -
	DRAWN -	REVISED -
PLOT SCALE = 40.0000 ' / in.	CHECKED -	REVISED -
PLOT DATE = 2/1/2018	DATE -	REVISED -

STATE OF ILLINOIS DEPARTMENT OF TRANSPORTATION

SCHEDULE OF QUANTITIES MCLEAN COUNTY			
SCALE: NONE	SHEET 1	OF 2 SHEETS	STA. TO STA.

F.A. RTE.	SECTION	COUNTY	TOTAL SHEETS	SHEET NO.
VAR	D5 HSIP GR 2018-1	VAR	23	11
CONTRACT NO. 70C85				
ILLINOIS FED. AID PROJECT				

SCHEDULE OF QUANTITIES MCLEAN COUNTY

SHEET 2 OF 2

EARTHWORK

LOCATION	ROUTE	URBAN/ RURAL	LATITUDE	LONGITUDE	SLD STA	DIR	LANE	DESCRIPTION	20400800	25000210	25000400	25000500	25000600	25100115	28000250	25000350	
									FURNISHED EX CU YD	SEED CL 2A ACRE	NIT FERT NUT POUND	PHOS FERT NUT POUND	POT FERT NUT POUND	MULCH METH 2 ACRE	TEMP EROS CONT SEED POUND	SEED CL 7 ACRE	
1	US 51 B	URBAN	40.538294	-88.996069	1.77	NB	PL	Whole (S of FAI 55)									
2	US 51 B	URBAN	40.537319	-88.996222	1.84	SB	DL	Appr (S of FAI 55)	7.5	0.01	0.9	0.9	0.9	0.01	4.0	0.03	
3	US 24	RURAL	40.742320	-88.638204	18.29	EB	DL	Dep SN 057-0230	7.5	0.01	0.9	0.9	0.9	0.01	4.0	0.03	
4	US 51 B	URBAN	40.541019	-88.996436	1.59	SB	DL	Whole (N of FAI 55)	7.5	0.01	0.9	0.9	0.9	0.01	4.0	0.03	
5	US 24	RURAL	40.741713	-88.698755	15.15	EB	DL	Dep SN 057-0071	7.5	0.01	0.9	0.9	0.9	0.01	4.0	0.03	
6	US 24	RURAL	40.742431	-88.639994	18.18	WB	DL	Dep SN 057-0230	7.5	0.01	0.9	0.9	0.9	0.01	4.0	0.03	
7	US 24	RURAL	40.742295	-88.640016	18.18	EB	DL	Appr SN 057-0230	7.5	0.01	0.9	0.9	0.9	0.01	4.0	0.03	
8	US 51 B	URBAN	40.561456	-89.001333	0.05	WB	DL	Appr SN 057-0213	7.5	0.01	0.9	0.9	0.9	0.01	4.0	0.03	
9	US 51 B	URBAN	40.561409	-89.003250	0.06	WB	DL	Dep SN 057-0213									
10	US 51 B	URBAN	40.561157	-89.003687	0.05	EB	DL	Appr SN 057-0213	7.5	0.01	0.9	0.9	0.9	0.01	4.0	0.03	
11	US 51 B	URBAN	40.561188	-89.001770	0.06	EB	DL	Dep SN 057-0213									
12	US 24	RURAL	40.741822	-88.699830	15.05	WB	DL	Dep SN 057-0071	7.5	0.01	0.9	0.9	0.9	0.01	4.0	0.03	
13	US 24	RURAL	40.742458	-88.638137	18.29	WB	DL	Appr SN 057-0230	7.5	0.01	0.9	0.9	0.9	0.01	4.0	0.03	
SUB TOTALS =									75.0	0.10	9.0	9.0	9.0	0.10	40.0	0.30	

14	US 136	RURAL	40.310869	-89.256325	0.29	WB	DL	SN 057-8006									
15	US 136	RURAL	40.310756	-89.257417	0.29	EB	DL	SN 057-8006									
16	US 136	RURAL	40.312008	-89.066511	10.45	WB	DL	SN 057-8018	19.1	0.02	2.1	2.1	2.1	0.02	8.0	0.06	
17	US 136	RURAL	40.311903	-89.066361	10.45	EB	DL	SN 057-8018	19.1	0.02	2.1	2.1	2.1	0.02	8.0	0.06	
18	IL 9	URBAN	40.488411	-88.946378	19.57	WB	DL	Sign Truss L019.60									
19	IL 9	URBAN	40.488288	-88.950344	19.36	WB	DL	Sign Truss									
20	IL 9	URBAN	40.488376	-88.951762	19.29	WB	DL	Sign Truss L019.30									
21	IL 9	URBAN	40.488397	-88.955433	19.07	WB	DL	Sign Truss	3.5	0.01	1.2	1.2	1.2	0.01	4.0	0.03	
22	IL 9	URBAN	40.488069	-88.958325	18.91	EB	DL	Sign Truss									
23	IL 9	URBAN	40.488061	-88.955353	19.07	EB	DL	Sign Truss R019.00	3.7	0.01	1.0	1.0	1.0	0.01	4.0	0.03	
24	IL 9	URBAN	40.488044	-88.953708	19.15	EB	DL	Sign Truss R019.20	5.2	0.01	1.0	1.0	1.0	0.01	4.0	0.03	
25	IL 9	URBAN	40.488019	-88.950733	19.34	EB	DL	Sign Truss R019.40	8.0	0.01	1.1	1.1	1.1	0.01	4.0	0.03	
SUB TOTALS =									58.6	0.08	8.5	8.5	8.5	0.08	32.0	0.24	

MCLEAN URBAN TOTALS =	50.4	0.08	7.9	7.9	7.9	0.08	32.0	0.24
MCLEAN RURAL TOTALS =	83.2	0.10	9.6	9.6	9.6	0.10	40.0	0.30

MCLEAN TOTALS =	133.6	0.18	17.5	17.5	17.5	0.18	72.0	0.54
-----------------	-------	------	------	------	------	------	------	------

MODEL: \\MODELNAME
 FILE NAME: \\FILENAME
 PROJECT: \\PROJECT
 OFFICE: \\OFFICE
 DATE: \\DATE

USER NAME = ppersonbr	DESIGNED -	REVISED -
	DRAWN -	REVISED -
PLOT SCALE = 40.0000 ' / in.	CHECKED -	REVISED -
PLOT DATE = 2/1/2018	DATE -	REVISED -

**STATE OF ILLINOIS
DEPARTMENT OF TRANSPORTATION**

SCHEDULE OF QUANTITIES MCLEAN COUNTY			
SCALE: NONE	SHEET 2	OF 2 SHEETS	STA. TO STA.

F.A. RTE.	SECTION	COUNTY	TOTAL SHEETS	SHEET NO.
	D5 HSIP GR 2018-1	VAR	23	12
CONTRACT NO. 70C85				
ILLINOIS FED. AID PROJECT				

SCHEDULE OF QUANTITIES

DEWITT COUNTY

SHEET 1 OF 1

GUARDRAIL

LOCATION	ROUTE	URBAN/ RURAL	LATITUDE	LONGITUDE	SLD STA	DIR	LANE	DESCRIPTION	63200310	63000001	63000003	63000007	X6330725	63000030	63000050	63000035	78200005
									GR REM FOOT	SPBGR TY A 6 FT FOOT	SPBGR TY A 9 FT FOOT	SPBGR TY B 6 FT FOOT	SPBGR (SR) FOOT	SPGR ATT TO CULV EACH	WPGR ATT CULV C1 FOOT	BS PROT OF GR FOOT	GR REF TY A EACH
26	US 51 B	URBAN	40.138256	-88.965553	2.76	SB	DL	Appr SN 020-0054	175.0	25.0							1.0
27	US 51 B	RURAL	40.135381	-88.965244	2.95	NB	DL	Dep (Violet Valley Rd T-Intersection)	506.0	350.0							6.0
SUB TOTALS =									681.0	375.0	0.0	0.0	0.0	0.0	0.0	0.0	7.0
DEWITT URBAN TOTALS =									175.0	25.0	0.0	0.0	0.0	0.0	0.0	0.0	1.0
DEWITT RURAL TOTALS =									506.0	350.0	0.0	0.0	0.0	0.0	0.0	6.0	
DEWITT TOTALS =									681.0	375.0	0.0	0.0	0.0	0.0	0.0	7.0	

TERMINALS

LOCATION	ROUTE	URBAN/ RURAL	LATITUDE	LONGITUDE	SLD STA	DIR	LANE	DESCRIPTION	63100045	63100085	63100089	X6310214	X6310088	63100041	63100167	63100169	72501000
									TBT TY 2 EACH	TBT TY 6 EACH	TBT TY 6B EACH	TBT TY6 SPL EACH	TBT T6A SPL EACH	TBT TY 1B EACH	TBT TY 1 (SPL) TAN EACH	TBT TY 1 (SPL) FLR EACH	TERM MARK - DA EACH
26	US 51 B	URBAN	40.138256	-88.965553	2.76	SB	DL	Appr SN 020-0054		1.0						1.0	1.0
27	US 51 B	RURAL	40.135381	-88.965244	2.95	NB	DL	Dep (Violet Valley Rd T-Intersection)		0.0						2.0	2.0
SUB TOTALS =									0.0	1.0	0.0	0.0	0.0	0.0	0.0	3.0	3.0
DEWITT URBAN TOTALS =									0.0	1.0	0.0	0.0	0.0	0.0	0.0	1.0	1.0
DEWITT RURAL TOTALS =									0.0	0.0	0.0	0.0	0.0	0.0	0.0	2.0	2.0
DEWITT TOTALS =									0.0	1.0	0.0	0.0	0.0	0.0	0.0	3.0	3.0

EARTHWORK

LOCATION	ROUTE	URBAN/ RURAL	LATITUDE	LONGITUDE	SLD STA	DIR	LANE	DESCRIPTION	20400800	25000210	25000400	25000500	25000600	25100115	28000250	25000350
									FURNISHED EX CU YD	SEED CL 2A ACRE	NIT FERT NUT POUND	PHOS FERT NUT POUND	POT FERT NUT POUND	MULCH METH 2 ACRE	TEMP EROS CONT SEED POUND	SEED CL 7 ACRE
26	US 51 BUSN	URBAN	40.138256	-88.965553	2.76	SB	DL	Appr SN 020-0054	7.5	0.01	0.9	0.9	0.9	0.01	4.0	0.03
27	US 51 BUSN	RURAL	40.135381	-88.965244	2.95	NB	DL	Dep (Violet Valley Rd T-Intersection)	15.0	0.02	1.8	1.8	1.8	0.02	8.0	0.06
SUB TOTALS =									22.5	0.03	2.7	2.7	2.7	0.03	12.0	0.09
DEWITT URBAN TOTALS =									7.5	0.01	0.9	0.9	0.9	0.01	4.0	0.03
DEWITT RURAL TOTALS =									15.0	0.02	1.8	1.8	1.8	0.02	8.0	0.06
DEWITT TOTALS =									22.5	0.03	2.7	2.7	2.7	0.03	12.0	0.09

MODEL: \\MODELNAME
 FILE NAME: \\FILENAME
 PROJECT: \\PROJECT
 OFFICE: \\OFFICE
 DRAWING: \\DRAWING
 SHEET: \\SHEET
 DATE: \\DATE

USER NAME = piersonbr	DESIGNED -	REVISED -
	DRAWN -	REVISED -
PLOT SCALE = 40.0000 ' / in.	CHECKED -	REVISED -
PLOT DATE = 2/21/2018	DATE -	REVISED -

**STATE OF ILLINOIS
DEPARTMENT OF TRANSPORTATION**

**SCHEDULE OF QUANTITIES
DEWITT COUNTY**

SCALE: NONE SHEET 1 OF 1 SHEETS STA. TO STA.

F.A. RTE.	SECTION	COUNTY	TOTAL SHEETS	SHEET NO.
	D5 HSIP GR 2018-1	VAR	23	13
CONTRACT NO. 70C85				
ILLINOIS		FED. AID PROJECT		

SCHEDULE OF QUANTITIES

PIATT COUNTY

SHEET 1 OF 1

GUARDRAIL

LOCATION	ROUTE	URBAN/ RURAL	LATITUDE	LONGITUDE	SLD STA	DIR	LANE	DESCRIPTION	63200310	63000001	63000003	63000007	X6330725	63000030	63000050	63000035	78200005	
									GR REM FOOT	SPBGR TY A 6 FT FOOT	SPBGR TY A 9 FT FOOT	SPBGR TY B 6 FT FOOT	SPBGR (SR) FOOT	SPGR ATT TO CULV EACH	WPGR ATT CULV C1 FOOT	BS PROT OF GR FOOT	GR REF TY A EACH	
28	IL 105	URBAN	40.046058	-88.573067	22.87	SB	DL	Appr SN 074-0072	100.0									1.0
29	IL 105	URBAN	40.044906	-88.572689	22.79	NB	DL	Appr SN 074-0072	100.0									1.0
30	IL 105	URBAN	40.044881	-88.572853	22.79	SB	DL	Dep SN 074-0072	100.0									1.0
31	IL 105	URBAN	40.046089	-88.572903	22.87	NB	DL	Dep SN 074-0072	100.0									1.0
SUB TOTALS =									400.0	0.0	0.0	0.0	0.0	0.0	0.0	0.0	0.0	4.0
PIATT URBAN TOTALS =									400.0	0.0	0.0	0.0	0.0	0.0	0.0	0.0	0.0	4.0
PIATT RURAL TOTALS =									0.0	0.0	0.0	0.0	0.0	0.0	0.0	0.0	0.0	
PIATT TOTALS =									400.0	0.0	0.0	0.0	0.0	0.0	0.0	0.0	4.0	

TERMINALS

LOCATION	ROUTE	URBAN/ RURAL	LATITUDE	LONGITUDE	SLD STA	DIR	LANE	DESCRIPTION	63100045	63100085	63100089	X6310214	X6310088	63100041	63100167	63100169	72501000
									TBT TY 2 EACH	TBT TY 6 EACH	TBT TY 6B EACH	TBT TY6 SPL EACH	TBT T6A SPL EACH	TBT TY 1B EACH	TBT TY 1 (SPL) TAN EACH	TBT TY 1 (SPL) FLR EACH	TERM MARK - DA EACH
28	IL 105	URBAN	40.046058	-88.573067	22.87	SB	DL	Appr SN 074-0072		1.0							1.0
29	IL 105	URBAN	40.044906	-88.572689	22.79	NB	DL	Appr SN 074-0072		1.0							1.0
30	IL 105	URBAN	40.044881	-88.572853	22.79	SB	DL	Dep SN 074-0072		1.0							1.0
31	IL 105	URBAN	40.046089	-88.572903	22.87	NB	DL	Dep SN 074-0072		1.0							1.0
SUB TOTALS =									0.0	4.0	0.0	0.0	0.0	0.0	0.0	4.0	4.0
PIATT URBAN SUB TOTALS =									0.0	4.0	0.0	0.0	0.0	0.0	0.0	4.0	4.0
PIATT RURAL SUB TOTALS =									0.0	0.0	0.0	0.0	0.0	0.0	0.0	0.0	0.0
PIATT TOTALS =									0.0	4.0	0.0	0.0	0.0	0.0	0.0	4.0	4.0

EARTHWORK

LOCATION	ROUTE	URBAN/ RURAL	LATITUDE	LONGITUDE	SLD STA	DIR	LANE	DESCRIPTION	20400800	25000210	25000400	25000500	25000600	25100115	28000250	25000350
									FURNISHED EX CU YD	SEED CL 2A ACRE	NIT FERT NUT POUND	PHOS FERT NUT POUND	POT FERT NUT POUND	MULCH METH 2 ACRE	TEMP EROS CONT SEED POUND	SEED CL 7 ACRE
28	IL 105	URBAN	40.046058	-88.573067	22.87	SB	DL	Appr SN 074-0072	7.5	0.01	0.9	0.9	0.9	0.01	4.0	0.03
29	IL 105	URBAN	40.044906	-88.572689	22.79	NB	DL	Appr SN 074-0072	7.5	0.01	0.9	0.9	0.9	0.01	4.0	0.03
30	IL 105	URBAN	40.044881	-88.572853	22.79	SB	DL	Dep SN 074-0072	7.5	0.01	0.9	0.9	0.9	0.01	4.0	0.03
31	IL 105	URBAN	40.046089	-88.572903	22.87	NB	DL	Dep SN 074-0072	7.5	0.01	0.9	0.9	0.9	0.01	4.0	0.03
SUB TOTALS =									30.0	0.04	3.6	3.6	3.6	0.04	16.0	0.12
PIATT URBAN SUB TOTALS =									30.0	0.04	3.6	3.6	3.6	0.04	16.0	0.12
PIATT RURAL SUB TOTALS =									0.0	0.00	0.0	0.0	0.0	0.00	0.0	0.00
PIATT TOTALS =									30.0	0.04	3.6	3.6	3.6	0.04	16.0	0.12

MODEL: \\MODELNAME
FILE NAME: \\PIATT\BIDDING\NTEC\Illinois\gov\PIATT\Documents\BIDD\Office\BIDD\Tct 5\Projects\0570C85\CADDData\CAD\Sheet\0570C85-PI-Schedule.dgn

USER NAME = ppersonbr	DESIGNED -	REVISED -
	DRAWN -	REVISED -
PLOT SCALE = 40.0000 ' / in.	CHECKED -	REVISED -
PLOT DATE = 2/21/2018	DATE -	REVISED -

**STATE OF ILLINOIS
DEPARTMENT OF TRANSPORTATION**

**SCHEDULE OF QUANTITIES
PIATT COUNTY**

SCALE: NONE SHEET 1 OF 1 SHEETS STA. TO STA.

F.A. RTE.	SECTION	COUNTY	TOTAL SHEETS	SHEET NO.
	D5 HSIP GR 2018-1	VAR	23	14
CONTRACT NO. 70C85				
ILLINOIS FED. AID PROJECT				

SCHEDULE OF QUANTITIES CHAMPAIGN COUNTY

SHEET 1 OF 1

GUARDRAIL

LOCATION	ROUTE	URBAN/ RURAL	LATITUDE	LONGITUDE	SLD STA	DIR	LANE	DESCRIPTION	63200310	63000001	63000003	63000007	X6330725	63000030	63000050	63000035	78200005
									GR REM FOOT	SPBGR TY A 6 FT FOOT	SPBGR TY A 9 FT FOOT	SPBGR TY B 6 FT FOOT	SPBGR (SR) FOOT	SPGR ATT TO CULV EACH	WPGR ATT CULV C1 FOOT	BS PROT OF GR FOOT	GR REF TY A EACH
32	IL 130 Spur	URBAN	40.120340	-88.174636	0.46	EB	DL	Sign Truss	389.0	287.5							4.0
33	IL 130 Spur	URBAN	40.118907	-88.176313	0.44	EB	DL	Sign Truss	122.8	62.5							4.0
34	I-57	URBAN	40.069356	-88.303919	13.88	SB	PL	SN 010-0272 Under Structure	384.6	137.5							4.0
35	Lincoln Ave	URBAN	40.134588	-88.219437	2.01	NB	DL	SN 010-0158	64.2	37.5							4.0
36	IL 130 Spur	URBAN	40.120672	-88.174512	0.60	WB	DL	SN 010-0033	251.0	287.5							4.0
37	US 45	URBAN	40.136722	-88.193928	12.44	SB	PL	Sign Truss S of O'Brien Dr	95.1	62.5							4.0
38	US 45	URBAN	40.136814	-88.193833	12.43	NB	PL	Sign Truss S of O'Brien Dr	90.3	25.0							4.0
SUB TOTALS =									1,397.0	900.0	0.0	0.0	0.0	0.0	0.0	0.0	28.0
CHAMPAIGN URBAN TOTALS =									1397.0	900.0	0.0	0.0	0.0	0.0	0.0	0.0	28.0
CHAMPAIGN RURAL TOTALS =									0.0	0.0	0.0	0.0	0.0	0.0	0.0	0.0	
CHAMPAIGN TOTALS =									1397.0	900.0	0.0	0.0	0.0	0.0	0.0	28.0	

TERMINALS

LOCATION	ROUTE	URBAN/ RURAL	LATITUDE	LONGITUDE	SLD STA	DIR	LANE	DESCRIPTION	63100045	63100085	63100089	X6310214	X6310088	63100041	63100167	63100169	72501000
									TBT TY 2 EACH	TBT TY 6 EACH	TBT TY 6B EACH	TBT T6 SPL EACH	TBT T6A SPL EACH	TBT TY 1B EACH	TBT TY 1 (SPL) TAN EACH	TBT TY 1 (SPL) FLR EACH	TERM MARK - DA EACH
32	IL 130 Spur	URBAN	40.120340	-88.174636	0.46	EB	DL	Sign Truss		1.0					1.0		1.0
33	IL 130 Spur	URBAN	40.118907	-88.176313	0.44	EB	DL	Sign Truss	1.0						1.0		1.0
34	I-57	URBAN	40.069356	-88.303919	13.88	SB	PL	SN 010-0272 Under Structure	1.0						1.0		1.0
35	Lincoln Ave	URBAN	40.134588	-88.219437	2.01	NB	DL	SN 010-0158		1.0					1.0		1.0
36	IL 130 Spur	URBAN	40.120672	-88.174512	0.60	WB	DL	SN 010-0033	1.0	1.0							
37	US 45	URBAN	40.136722	-88.193928	12.44	SB	PL	Sign Truss S of O'Brien Dr							2.0		2.0
38	US 45	URBAN	40.136814	-88.193833	12.43	NB	PL	Sign Truss S of O'Brien Dr							2.0		2.0
SUB TOTALS =									3.0	3.0	0.0	0.0	0.0	0.0	8.0	0.0	8.0
CHAMPAIGN URBAN SUB TOTALS =									3.0	3.0	0.0	0.0	0.0	0.0	8.0	0.0	8.0
CHAMPAIGN RURAL SUB TOTALS =									0.0	0.0	0.0	0.0	0.0	0.0	0.0	0.0	0.0
CHAMPAIGN TOTALS =									3.0	3.0	0.0	0.0	0.0	0.0	8.0	0.0	8.0

EARTHWORK

LOCATION	ROUTE	URBAN/ RURAL	LATITUDE	LONGITUDE	SLD STA	DIR	LANE	DESCRIPTION	20400800	25000210	25000400	25000500	25000600	25100115	28000250	25000350
									FURNISHED EX CU YD	SEED CL 2A ACRE	NIT FERT NUT POUND	PHOS FERT NUT POUND	POT FERT NUT POUND	MULCH METH 2 ACRE	TEMP EROS CONT SEED POUND	SEED CL 7 ACRE
32	IL 130 Spur	URBAN	40.120340	-88.174636	0.46	EB	DL	Sign Truss								
33	IL 130 Spur	URBAN	40.118907	-88.176313	0.44	EB	DL	Sign Truss	7.5	0.01	0.9	0.9	0.9	0.01	4.0	0.03
34	I-57	URBAN	40.069356	-88.303919	13.88	SB	PL	SN 010-0272 Under Structure	7.5	0.01	0.9	0.9	0.9	0.01	4.0	0.03
35	Lincoln Ave	URBAN	40.134588	-88.219437	2.01	NB	DL	SN 010-0158	7.5	0.01	0.9	0.9	0.9	0.01	4.0	0.03
36	IL 130 Spur	URBAN	40.120672	-88.174512	0.60	WB	DL	SN 010-0033	7.5	0.01	0.9	0.9	0.9	0.01	4.0	0.03
37	US 45	URBAN	40.136722	-88.193928	12.44	SB	PL	Sign Truss S of O'Brien Dr	7.5	0.01	0.9	0.9	0.9	0.01	4.0	0.03
38	US 45	URBAN	40.136814	-88.193833	12.43	NB	PL	Sign Truss S of O'Brien Dr	7.5	0.01	0.9	0.9	0.9	0.01	4.0	0.03
SUB TOTALS =									45.0	0.06	5.4	5.4	5.4	0.06	24.0	0.18
CHAMPAIGN URBAN SUB TOTALS =									45.0	0.06	5.4	5.4	5.4	0.06	24.0	0.18
CHAMPAIGN RURAL SUB TOTALS =									0.0	0.00	0.0	0.0	0.0	0.00	0.0	0.00
CHAMPAIGN TOTALS =									45.0	0.06	5.4	5.4	5.4	0.06	24.0	0.18

MODEL: \\MODELNAME
FILE: \\NAME: \\PROJECTS\0570C85\CADDData\CAD\Sheet\0570C85-PL-Schedule.dgn

USER NAME = piersonbr	DESIGNED -	REVISED -
	DRAWN -	REVISED -
PLOT SCALE = 40.0000 ' / in.	CHECKED -	REVISED -
PLOT DATE = 2/21/2018	DATE -	REVISED -

**STATE OF ILLINOIS
DEPARTMENT OF TRANSPORTATION**

SCHEDULE OF QUANTITIES CHAMPAIGN COUNTY	
SCALE: NONE	SHEET 1 OF 1 SHEETS
STA.	TO STA.

F.A. RTE.	SECTION	COUNTY	TOTAL SHEETS	SHEET NO.
	D5 HSIP GR 2018-1	VAR	23	15
CONTRACT NO. 70C85				
		ILLINOIS	FED. AID PROJECT	

SCHEDULE OF QUANTITIES

DOUGLAS COUNTY

SHEET 1 OF 2

GUARDRAIL

LOCATION	ROUTE	URBAN/ RURAL	LATITUDE	LONGITUDE	SLD STA	DIR	LANE	DESCRIPTION	63200310	63000001	63000003	63000007	X6330725	63000030	63000050	63000035	78200005
									GR REM FOOT	SPBGR TY A 6 FT FOOT	SPBGR TY A 9 FT FOOT	SPBGR TY B 6 FT FOOT	SPBGR (SR) FOOT	SPGR ATT TO CULV FOOT	WPGR ATT CULV C1 FOOT	BS PROT OF GR FOOT	GR REF TY A EACH
39*	US 36	RURAL	39.791778	-88.252292	11.76	WB	DL	Appr SN 021-0020	67.3				37.5				2.0
40	US 36	RURAL	39.791583	-88.304472	8.98	EB	DL	Appr SN 021-9900	66.0	75.0							3.0
41	US 36	RURAL	39.791639	-88.303583	9.02	EB	DL	Dep SN 021-9900	70.0								2.0
42	US 36	RURAL	39.791736	-88.303369	9.04	WB	DL	Appr SN 021-9900	72.0	75.0							3.0
43	US 36	RURAL	39.791722	-88.304250	8.99	WB	DL	Dep SN 021-9900	78.0								2.0
44	US 36	RURAL	39.792292	-88.005986	24.85	WB	DL	Whole SN 021-2019	365.0	37.5		25.0		37.5			3.0
45*	US 36	RURAL	39.791756	-88.462119	0.59	EB	DL	Dep SN 021-0051	87.5								1.0
46*	US 36	RURAL	39.791892	-88.461908	0.61	WB	DL	Appr SN 021-0051	112.5	37.5							2.0
47	US 36	RURAL	39.792019	-88.090018	20.41	EB	DL	Appr SN 021-0050 (FE)	182.0				12.5				1.0
48*	US 36	RURAL	39.791761	-88.463347	0.53	EB	DL	Appr SN 021-0051	103.0	62.5							2.0
49*	US 36	RURAL	39.791903	-88.463211	0.54	WB	DL	Dep SN 021-0051	70.0								1.0
50*	US 36	RURAL	39.791985	-88.089308	20.42	EB	DL	Appr SN 021-0050	57.5				12.5				1.0
51	US 36	RURAL	39.792150	-88.006319	24.83	EB	DL	Whole SN 021-2019	365.0	37.5		25.0		37.5			3.0
52	US 36	RURAL	39.791675	-88.418003	2.95	EB	DL	Appr SN 021-0017	152.4	37.5							2.0
53	US 36	RURAL	39.791664	-88.416867	3.01	EB	DL	Dep SN 021-0017	142.5								1.0
54	US 36	RURAL	39.791756	-88.416867	3.01	WB	DL	Appr SN 021-0017	133.4	37.5							2.0
55	US 36	RURAL	39.791730	-88.369719	5.59	WB	DL	Dep SN 021-0018	360.0	425.0							7.0
56	US 36	RURAL	39.791622	-88.367123	5.62	EB	DL	Dep SN 021-0018	140.0	37.5							1.0
57	US 36	RURAL	39.791834	-88.367613	5.61	WB	DL	Appr SN 021-0018	75.0				12.5				2.0
SUB TOTALS =									2,699.1	862.5	0.0	50.0	75.0	75.0	0.0	0.0	41.0

* MATCH EXISTING ALIGNMENT OF GUARDRAIL

DOUGLAS URBAN TOTALS =	0.0	0.0	0.0	0.0	0.0	0.0	0.0	0.0	0.0
DOUGLAS RURAL TOTALS =	2699.1	862.5	0.0	50.0	75.0	75.0	0.0	0.0	41.0
DOUGLAS TOTALS =	2699.1	862.5	0.0	50.0	75.0	75.0	0.0	0.0	41.0

TERMINALS

LOCATION	ROUTE	URBAN/ RURAL	LATITUDE	LONGITUDE	SLD STA	DIR	LANE	DESCRIPTION	63100045	63100085	63100089	X6310214	X6310088	63100041	63100167	63100169	72501000
									TBT TY 2 EACH	TBT TY 6 EACH	TBT TY 6B EACH	TBT T6 SPL EACH	TBT T6A SPL EACH	TBT TY 1B EACH	TBT TY 1 (SPL) TAN EACH	TBT TY 1 (SPL) FLR EACH	TERM MARK - DA EACH
39*	US 36	RURAL	39.791778	-88.252292	11.76	WB	DL	Appr SN 021-0020	2.0				1.0			1.0	1.0
40	US 36	RURAL	39.791583	-88.304472	8.98	EB	DL	Appr SN 021-9900			1.0			1.0			1.0
41	US 36	RURAL	39.791639	-88.303583	9.02	EB	DL	Dep SN 021-9900			1.0			1.0			1.0
42	US 36	RURAL	39.791736	-88.303369	9.04	WB	DL	Appr SN 021-9900			1.0			1.0			1.0
43	US 36	RURAL	39.791722	-88.304250	8.99	WB	DL	Dep SN 021-9900			1.0			1.0			1.0
44	US 36	RURAL	39.792292	-88.005986	24.85	WB	DL	Whole SN 021-2019							2.0		2.0
45*	US 36	RURAL	39.791756	-88.462119	0.59	EB	DL	Dep SN 021-0051				1.0		1.0			1.0
46*	US 36	RURAL	39.791892	-88.461908	0.61	WB	DL	Appr SN 021-0051		1.0				1.0			1.0
47	US 36	RURAL	39.792019	-88.090018	20.41	EB	DL	Appr SN 021-0050 (FE)	1.0						1.0		1.0
48*	US 36	RURAL	39.791761	-88.463347	0.53	EB	DL	Appr SN 021-0051		1.0				1.0			1.0
49*	US 36	RURAL	39.791903	-88.463211	0.54	WB	DL	Dep SN 021-0051		1.0				1.0			1.0
50*	US 36	RURAL	39.791985	-88.089308	20.42	EB	DL	Appr SN 021-0050	1.0	1.0							0.0
51	US 36	RURAL	39.792150	-88.006319	24.83	EB	DL	Whole SN 021-2019							2.0		2.0
52	US 36	RURAL	39.791675	-88.418003	2.95	EB	DL	Appr SN 021-0017				1.0			1.0		1.0
53	US 36	RURAL	39.791664	-88.416867	3.01	EB	DL	Dep SN 021-0017				1.0			1.0		1.0
54	US 36	RURAL	39.791756	-88.416867	3.01	WB	DL	Appr SN 021-0017				1.0			1.0		1.0
55	US 36	RURAL	39.791730	-88.369719	5.59	WB	DL	Dep SN 021-0018		1.0					1.0		1.0
56	US 36	RURAL	39.791622	-88.367123	5.62	EB	DL	Dep SN 021-0018		1.0					1.0		1.0
57	US 36	RURAL	39.791834	-88.367613	5.61	WB	DL	Appr SN 021-0018	1.0	1.0					1.0		1.0
SUB TOTALS =									5.0	7.0	4.0	1.0	4.0	4.0	4.0	11.0	20.0

* MATCH EXISTING ALIGNMENT OF GUARDRAIL

DOUGLAS URBAN TOTALS =	0.0	0.0	0.0	0.0	0.0	0.0	0.0	0.0	0.0
DOUGLAS RURAL TOTALS =	5.0	7.0	4.0	1.0	4.0	4.0	4.0	11.0	20.0
DOUGLAS TOTALS =	5.0	7.0	4.0	1.0	4.0	4.0	4.0	11.0	20.0

MODEL: \\MODELNAME
 FILE NAME: \\FILENAME
 PROJECT: \\PROJECT
 OFFICE: \\OFFICE
 DRAWING: \\DRAWING
 SHEET: \\SHEET

USER NAME = piersobr	DESIGNED -	REVISED -
	DRAWN -	REVISED -
PLOT SCALE = 40.0000 ' / in.	CHECKED -	REVISED -
PLOT DATE = 2/21/2018	DATE -	REVISED -

**STATE OF ILLINOIS
DEPARTMENT OF TRANSPORTATION**

**SCHEDULE OF QUANTITIES
DOUGLAS COUNTY**

SCALE: NONE SHEET 1 OF 2 SHEETS STA. TO STA.

F.A. RTE.	SECTION	COUNTY	TOTAL SHEETS	SHEET NO.
VAR	D5 HSIP GR 2018-1	VAR	23	16
CONTRACT NO. 70C85				
ILLINOIS FED. AID PROJECT				

SCHEDULE OF QUANTITIES

DOUGLAS COUNTY

SHEET 2 OF 2

EARTHWORK

LOCATION	ROUTE	URBAN/ RURAL	LATITUDE	LONGITUDE	SLD STA	DIR	LANE	DESCRIPTION	20400800	25000210	25000400	25000500	25000600	25100115	28000250	25000350	
									FURNISHED EX CU YD	SEED CL 2A ACRE	NIT FERT NUT POUND	PHOS FERT NUT POUND	POT FERT NUT POUND	MULCH METH 2 ACRE	TEMP EROS CONT SEED POUND	SEED CL 7 ACRE	
39	US 36	RURAL	39.791778	-88.252292	11.76	WB	DL	Appr SN 021-0020									
40	US 36	RURAL	39.791583	-88.304472	8.98	EB	DL	Appr SN 021-9900									
41	US 36	RURAL	39.791639	-88.303583	9.02	EB	DL	Dep SN 021-9900									
42	US 36	RURAL	39.791736	-88.303369	9.04	WB	DL	Appr SN 021-9900									
43	US 36	RURAL	39.791722	-88.304250	8.99	WB	DL	Dep SN 021-9900									
44	US 36	RURAL	39.792292	-88.005986	24.85	WB	DL	Whole SN 021-2019	15.0	0.02	1.8	1.8	1.8	0.02	8.0	0.06	
45	US 36	RURAL	39.791756	-88.462119	0.59	EB	DL	Dep SN 021-0051	7.5	0.01	0.9	0.9	0.9	0.01	4.0	0.03	
46	US 36	RURAL	39.791892	-88.461908	0.61	WB	DL	Appr SN 021-0051	7.5	0.01	0.9	0.9	0.9	0.01	4.0	0.03	
47	US 36	RURAL	39.792019	-88.090018	20.41	EB	DL	Appr SN 021-0050 (FE)	7.5	0.01	0.9	0.9	0.9	0.01	4.0	0.03	
48	US 36	RURAL	39.791761	-88.463347	0.53	EB	DL	Appr SN 021-0051	7.5	0.01	0.9	0.9	0.9	0.01	4.0	0.03	
49	US 36	RURAL	39.791903	-88.463211	0.54	WB	DL	Dep SN 021-0051	7.5	0.01	0.9	0.9	0.9	0.01	4.0	0.03	
50	US 36	RURAL	39.791985	-88.089308	20.42	EB	DL	Appr SN 021-0050	7.5	0.01	0.9	0.9	0.9	0.01	4.0	0.03	
51	US 36	RURAL	39.792150	-88.006319	24.83	EB	DL	Whole SN 021-2019	15.0	0.02	1.8	1.8	1.8	0.02	8.0	0.06	
52	US 36	RURAL	39.791675	-88.418003	2.95	EB	DL	Appr SN 021-0017	7.5	0.01	0.9	0.9	0.9	0.01	4.0	0.03	
53	US 36	RURAL	39.791664	-88.416867	3.01	EB	DL	Dep SN 021-0017	7.5	0.01	0.9	0.9	0.9	0.01	4.0	0.03	
54	US 36	RURAL	39.791756	-88.416867	3.01	WB	DL	Appr SN 021-0017	7.5	0.01	0.9	0.9	0.9	0.01	4.0	0.03	
55	US 36	RURAL	39.791730	-88.369719	5.59	WB	DL	Dep SN 021-0018	7.5	0.01	0.9	0.9	0.9	0.01	4.0	0.03	
56	US 36	RURAL	39.791622	-88.367123	5.62	EB	DL	Dep SN 021-0018	7.5	0.01	0.9	0.9	0.9	0.01	4.0	0.03	
57	US 36	RURAL	39.791834	-88.367613	5.61	WB	DL	Appr SN 021-0018	7.5	0.01	0.9	0.9	0.9	0.01	4.0	0.03	
SUB TOTALS =									120.0	0.16	14.4	14.4	14.4	0.16	64.0	0.48	
DOUGLAS URBAN TOTALS =									0.0	0.00	0.0	0.0	0.0	0.00	0.0	0.00	
DOUGLAS RURAL TOTALS =									120.0	0.16	14.4	14.4	14.4	0.16	64.0	0.48	
DOUGLAS TOTALS =									120.0	0.16	14.4	14.4	14.4	0.16	64.0	0.48	

MODEL: \\MODELNAME
 FILE NAME: \\FILENAME
 PROJECT: \\PROJECT
 OFFICE: \\OFFICE
 DRAWING: \\DRAWING

USER NAME = piersonbr	DESIGNED -	REVISED -
	DRAWN -	REVISED -
PLOT SCALE = 40,0000 ' / in.	CHECKED -	REVISED -
PLOT DATE = 2/1/2018	DATE -	REVISED -

**STATE OF ILLINOIS
DEPARTMENT OF TRANSPORTATION**

**SCHEDULE OF QUANTITIES
DOUGLAS COUNTY**

SCALE: NONE SHEET 2 OF 2 SHEETS STA. TO STA.

F.A. RTE.	SECTION	COUNTY	TOTAL SHEETS	SHEET NO.
VAR	D5 HSIP GR 2018-1	VAR	23	17
CONTRACT NO. 70C85				
ILLINOIS FED. AID PROJECT				

SCHEDULE OF QUANTITIES

EDGAR COUNTY

SHEET 1 OF 3

GUARDRAIL

LOCATION	ROUTE	URBAN/ RURAL	LATITUDE	LONGITUDE	SLD STA	DIR	LANE	DESCRIPTION	63200310	63000001	63000003	63000007	X6330725	63000030	63000050	63000035	78200005
									GR REM	SPBGR TY A 6 FT	SPBGR TY A 9 FT	SPBGR TY B 6 FT	SPBGR (SR)	SPGR ATT TO CULV	WPGR ATT CULV C1	BS PROT OF GR	GR REF TY A
									FOOT	FOOT	FOOT	FOOT	FOOT	EACH	FOOT	FOOT	EACH
58	IL 1/US 150	RURAL	39.807700	-87.673056	5.19	NB	DL	Dep SN 023-0003	41.7	0.0							2.0
59	IL 1/US 150	RURAL	39.807375	-87.673204	5.22	NB	DL	Appr SN 023-0003	37.2	0.0							2.0
60	IL 1/US 150	RURAL	39.806905	-87.673507	5.26	SB	DL	Dep SN 023-0003	226.7	137.5						137.5	3.0
61	IL 1/US 150	RURAL	39.808047	-87.673022	5.17	SB	DL	Appr SN 023-0003 (S side of PE)	166.5	75.0						75.0	3.0
62	IL 1/US 150	RURAL	39.808756	-87.672625	5.11	SB	DL	Appr (N side of PE)	203.5	100.0						100.0	3.0
63	IL 1/US 150	RURAL	39.810803	-87.671686	4.96	NB	DL	SN 023-8061	376.0	275.0							5.0
64	IL 1/US 150	RURAL	39.810250	-87.672072	5.00	SB	DL	SN 023-8061	316.2	225.0			25.0				4.0
65	IL 1/US 150	RURAL	39.812569	-87.671247	4.84	NB	DL	SN 023-8024	264.5	62.5		25.0		12.5			3.0
66	IL 1/US 150	RURAL	39.812600	-87.671392	4.84	SB	DL	SN 023-8024	278.1	62.5		25.0		12.5			3.0
67	IL 1/US 150	RURAL	39.814222	-87.670981	4.72	SB	DL	(S side of PE)	206.2	62.5		25.0		12.5			3.0
68	IL 1/US 150	RURAL	39.835806	-87.665778	3.22	SB	DL	SN 023-8022	315.4	37.5		25.0		12.5			3.0
69	IL 1/US 150	RURAL	39.836575	-87.665500	3.16	NB	DL	SN 023-8022	296.5	37.5		25.0		12.5			3.0
70	IL 1/US 150	RURAL	39.845308	-87.662947	2.54	SB	DL	SN 023-8021	241.3	75.0							3.0
71	IL 1/US 150	RURAL	39.850614	-87.660464	2.16	NB	DL	SN 023-8020	174.8	0.0		25.0			25.0		3.0
72	IL 1/US 150	RURAL	39.850639	-87.660622	2.16	SB	DL	SN 023-8020	278.5	62.5		25.0			25.0		3.0
73	IL 1/US 150	RURAL	39.852297	-87.659903	2.03	SB	DL	Along railway	241.3	75.0							3.0
74	US 36	RURAL	39.792361	-87.921692	2.52	EB	DL	Appr SN 023-0027	213.6	112.5							3.0
75	US 36	RURAL	39.792364	-87.920331	2.59	EB	DL	Dep SN 023-0027	137.3	37.5							2.0
76	US 36	RURAL	39.792433	-87.921431	2.54	WB	DL	Dep SN 023-0027	136.5	37.5							2.0
77	US 36	RURAL	39.792500	-87.920064	2.61	WB	DL	Appr SN 023-0027	211.8	112.5							3.0
78	US 36	RURAL	39.792378	-87.901628	3.59	EB	DL	Appr SN 023-0028	211.0	112.5							3.0
79	US 36	RURAL	39.792381	-87.900486	3.65	EB	DL	Dep SN 023-0028	123.2	25.0							2.0
80	US 36	RURAL	39.792519	-87.900486	3.64	WB	DL	Appr SN 023-0028	149.3	50.0							2.0
81	US 36	RURAL	39.792517	-87.901650	3.59	WB	DL	Dep SN 023-0028	136.3	37.5							2.0
82	US 36	RURAL	39.792611	-87.875131	5.00	WB	DL	SN 023-2013 & 023-8066	300.8	37.5		25.0		37.5			3.0
83	US 36	RURAL	39.792483	-87.874017	5.06	EB	DL	SN 023-2013	204.7	0.0		25.0		37.5			3.0
84	US 36	RURAL	39.792572	-87.853017	6.19	EB	DL	Appr SN 023-0031	53.9	37.5							2.0
85	US 36	RURAL	39.792697	-87.853030	6.19	WB	DL	Dep SN 023-0031	52.2	0.0							2.0
86	US 36	RURAL	39.792700	-87.852503	6.21	WB	DL	Appr (SN 023-0031	50.4	0.0			25.0				2.0
87	US 36	RURAL	39.792514	-87.797361	9.15	WB	DL	Dep SN 023-0032	110.2	12.5							2.0
88	US 36	RURAL	39.792383	-87.796514	9.20	EB	DL	Dep SN 023-0032	111.3	12.5							2.0
89	US 36	RURAL	39.792372	-87.797667	9.13	EB	DL	Appr SN 023-0032	174.7	75.0							3.0
90	US 36	RURAL	39.792508	-87.796219	9.21	WB	DL	Appr SN 023-0032	172.5	75.0							3.0
91	US 36	RURAL	39.792069	-87.732169	12.61	EB	DL	Appr SN 023-0007	105.5	12.5							2.0
92	US 36	RURAL	39.792042	-87.731225	12.66	EB	DL	Dep SN 023-0007	114.6	25.0							2.0
93	US 36	RURAL	39.792222	-87.732211	12.61	WB	DL	Dep SN 023-0007	126.9	37.5							2.0
94	US 36	RURAL	39.792236	-87.731011	12.67	WB	DL	Appr SN 023-0007	191.7	100.0							3.0
95	US 36	RURAL	39.792386	-87.686333	15.05	EB	DL	Appr SN 023-9911	89.3	25.0							2.0
96	US 36	RURAL	39.792497	-87.686299	15.05	WB	DL	Dep SN 023-9911	89.3	0.0							1.0
97	US 36	RURAL	39.792400	-87.685636	15.09	EB	DL	Dep SN 023-9911	89.3	0.0							1.0
98	US 36	RURAL	39.792506	-87.685606	15.09	WB	DL	Appr SN 023-9911	89.3	25.0							2.0
99	US 36	RURAL	39.792781	-87.648142	17.08	EB	DL	SN 023-8311	423.5	287.5			37.5				6.0
100	US 36	RURAL	39.793033	-87.650504	16.95	WB	DL	SN 023-8311	663.0	562.5							9.0
101	US 36	RURAL	39.793242	-87.637436	17.65	WB	DL	Appr SN 023-0010	12.5	0.0							1.0
102	US 36	RURAL	39.796014	-87.552014	22.22	WB	DL	Appr SN 023-0030	12.5	0.0							1.0
SUB TOTALS =									8,221.5	3,137.5	0.0	225.0	162.5	137.5	50.0	312.5	122.0

EDGAR URBAN TOTALS =	0.0	0.0	0.0	0.0	0.0	0.0	0.0	0.0
EDGAR RURAL TOTALS =	8221.5	3137.5	0.0	225.0	162.5	137.5	50.0	312.5
EDGAR TOTALS =	8221.5	3137.5	0.0	225.0	162.5	137.5	50.0	312.5

MODEL: I:\MODEL\NAME
 FILE: NAME: P:\PROJECTS\0570C85\CADD\DATA\CADD\PROJECTS\0570C85-PLANS-SCHEDULE.dgn

USER NAME = piersonbr	DESIGNED -	REVISED -
	DRAWN -	REVISED -
PLOT SCALE = 40.0000 ' / in.	CHECKED -	REVISED -
PLOT DATE = 2/21/2018	DATE -	REVISED -

**STATE OF ILLINOIS
DEPARTMENT OF TRANSPORTATION**

**SCHEDULE OF QUANTITIES
EDGAR COUNTY**

SCALE: NONE SHEET 1 OF 3 SHEETS STA. TO STA.

F.A. RTE.	SECTION	COUNTY	TOTAL SHEETS	SHEET NO.
VAR	D5 HSP GR 2018-1	VAR	23	18
CONTRACT NO. 70C85				
ILLINOIS		FED. AID PROJECT		

SCHEDULE OF QUANTITIES

EDGAR COUNTY

SHEET 2 OF 3

TERMINALS

LOCATION	ROUTE	URBAN/ RURAL	LATITUDE	LONGITUDE	SLD STA	DIR	LANE	DESCRIPTION	63100045	63100085	63100089	X6310214	X6310088	63100041	63100167	63100169	72501000
									TBT TY 2	TBT TY 6	TBT TY 6B	TBT T6 SPL	TBT T6A SPL	TBT TY 1B	TBT TY 1 (SPL) TAN	TBT TY 1 (SPL) FLR	TERM MARK - DA
									EACH	EACH	EACH	EACH	EACH	EACH	EACH	EACH	EACH
58	IL 1/US 150	RURAL	39.807700	-87.673056	5.19	NB	DL	Dep SN 023-0003					1.0		1.0		1.0
59	IL 1/US 150	RURAL	39.807375	-87.673204	5.22	NB	DL	Appr SN 023-0003					1.0		1.0		1.0
60	IL 1/US 150	RURAL	39.806905	-87.673507	5.26	SB	DL	Dep SN 023-0003					1.0		1.0		1.0
61	IL 1/US 150	RURAL	39.808047	-87.673022	5.17	SB	DL	Appr SN 023-0003 (S side of PE)					1.0		1.0		1.0
62	IL 1/US 150	RURAL	39.808756	-87.672625	5.11	SB	DL	Appr (N side of PE)							2.0		2.0
63	IL 1/US 150	RURAL	39.810803	-87.671686	4.96	NB	DL	SN 023-8061							2.0		2.0
64	IL 1/US 150	RURAL	39.810250	-87.672072	5.00	SB	DL	SN 023-8061	1.0						1.0		1.0
65	IL 1/US 150	RURAL	39.812569	-87.671247	4.84	NB	DL	SN 023-8024							1.0	1.0	2.0
66	IL 1/US 150	RURAL	39.812600	-87.671392	4.84	SB	DL	SN 023-8024							1.0	1.0	2.0
67	IL 1/US 150	RURAL	39.814222	-87.670981	4.72	SB	DL	(S side of PE)							2.0		2.0
68	IL 1/US 150	RURAL	39.835806	-87.665778	3.22	SB	DL	SN 023-8022							2.0		2.0
69	IL 1/US 150	RURAL	39.836575	-87.665500	3.16	NB	DL	SN 023-8022							2.0		2.0
70	IL 1/US 150	RURAL	39.845308	-87.662947	2.54	SB	DL	SN 023-8021							2.0		2.0
71	IL 1/US 150	RURAL	39.850614	-87.660464	2.16	NB	DL	SN 023-8020	2.0						2.0		2.0
72	IL 1/US 150	RURAL	39.850639	-87.660622	2.16	SB	DL	SN 023-8020							2.0		2.0
73	IL 1/US 150	RURAL	39.852297	-87.659903	2.03	SB	DL	Along railway							2.0		2.0
74	US 36	RURAL	39.792361	-87.921692	2.52	EB	DL	Appr SN 023-0027		1.0						1.0	1.0
75	US 36	RURAL	39.792364	-87.920331	2.59	EB	DL	Dep SN 023-0027		1.0						1.0	1.0
76	US 36	RURAL	39.792433	-87.921431	2.54	WB	DL	Dep SN 023-0027		1.0						1.0	1.0
77	US 36	RURAL	39.792500	-87.920064	2.61	WB	DL	Appr SN 023-0027		1.0						1.0	1.0
78	US 36	RURAL	39.792378	-87.901628	3.59	EB	DL	Appr SN 023-0028		1.0						1.0	1.0
79	US 36	RURAL	39.792381	-87.900486	3.65	EB	DL	Dep SN 023-0028		1.0						1.0	1.0
80	US 36	RURAL	39.792519	-87.900486	3.64	WB	DL	Appr SN 023-0028		1.0						1.0	1.0
81	US 36	RURAL	39.792517	-87.901650	3.59	WB	DL	Dep SN 023-0028		1.0						1.0	1.0
82	US 36	RURAL	39.792611	-87.875131	5.00	WB	DL	SN 023-2013 & 023-8066								2.0	2.0
83	US 36	RURAL	39.792483	-87.874017	5.06	EB	DL	SN 023-2013							1.0	1.0	2.0
84	US 36	RURAL	39.792572	-87.853017	6.19	EB	DL	Appr SN 023-0031		1.0						1.0	1.0
85	US 36	RURAL	39.792697	-87.853030	6.19	WB	DL	Dep SN 023-0031		1.0						1.0	1.0
86	US 36	RURAL	39.792700	-87.852503	6.21	WB	DL	Appr (SN 023-0031)	2.0	1.0						1.0	1.0
87	US 36	RURAL	39.792514	-87.797361	9.15	WB	DL	Dep SN 023-0032		1.0						1.0	1.0
88	US 36	RURAL	39.792383	-87.796514	9.20	EB	DL	Dep SN 023-0032		1.0						1.0	1.0
89	US 36	RURAL	39.792372	-87.797667	9.13	EB	DL	Appr SN 023-0032		1.0						1.0	1.0
90	US 36	RURAL	39.792508	-87.796219	9.21	WB	DL	Appr SN 023-0032		1.0						1.0	1.0
91	US 36	RURAL	39.792069	-87.732169	12.61	EB	DL	Appr SN 023-0007		1.0						1.0	1.0
92	US 36	RURAL	39.792042	-87.731225	12.66	EB	DL	Dep SN 023-0007		1.0						1.0	1.0
93	US 36	RURAL	39.792222	-87.732211	12.61	WB	DL	Dep SN 023-0007		1.0						1.0	1.0
94	US 36	RURAL	39.792236	-87.731011	12.67	WB	DL	Appr SN 023-0007		1.0						1.0	1.0
95	US 36	RURAL	39.792386	-87.686333	15.05	EB	DL	Appr SN 023-9911			1.0			1.0			0.0
96	US 36	RURAL	39.792497	-87.686299	15.05	WB	DL	Dep SN 023-9911			1.0			1.0			0.0
97	US 36	RURAL	39.792400	-87.685636	15.09	EB	DL	Dep SN 023-9911			1.0			1.0			0.0
98	US 36	RURAL	39.792506	-87.685606	15.09	WB	DL	Appr SN 023-9911			1.0			1.0			0.0
99	US 36	RURAL	39.792781	-87.648142	17.08	EB	DL	SN 023-8311							1.0	1.0	2.0
100	US 36	RURAL	39.793033	-87.650504	16.95	WB	DL	SN 023-8311								2.0	2.0
101	US 36	RURAL	39.793242	-87.637436	17.65	WB	DL	Appr SN 023-0010	1.0								0.0
102	US 36	RURAL	39.796014	-87.552014	22.22	WB	DL	Appr SN 023-0030	1.0								0.0
SUB TOTALS =									7.0	19.0	4.0	0.0	4.0	4.0	27.0	27.0	54.0
EDGAR URBAN TOTALS =									0.0	0.0	0.0	0.0	0.0	0.0	0.0	0.0	0.0
EDGAR RURAL TOTALS =									7.0	19.0	4.0	0.0	4.0	4.0	27.0	27.0	54.0
EDGAR TOTALS =									7.0	19.0	4.0	0.0	4.0	4.0	27.0	27.0	54.0

MODEL: I:\MODEL\NAME: FILE: NAME: P:\U\B\EDID\NTEC\Illinois\gov\PIWDOT\Documents\DOT Office\Illinet 5\Projects\0570C85\CaddData\Cadd\Sheet\0570C85-RHS-Schedule.dgn

USER NAME = ppersonbr	DESIGNED -	REVISED -
	DRAWN -	REVISED -
PLOT SCALE = 40.0000 ' / in.	CHECKED -	REVISED -
PLOT DATE = 2/1/2018	DATE -	REVISED -

STATE OF ILLINOIS
DEPARTMENT OF TRANSPORTATION

SCHEDULE OF QUANTITIES
EDGAR COUNTY

SCALE: NONE SHEET 2 OF 3 SHEETS STA. TO STA.

F.A. RTE.	SECTION	COUNTY	TOTAL SHEETS	SHEET NO.
	D5 HSIP GR 2018-1	VAR	23	19
CONTRACT NO. 70C85				
ILLINOIS		FED. AID PROJECT		

SCHEDULE OF QUANTITIES

EDGAR COUNTY

SHEET 3 OF 3

EARTHWORK

LOCATION	ROUTE	URBAN/ RURAL	LATITUDE	LONGITUDE	SLD STA	DIR	LANE	DESCRIPTION	20400800	25000210	25000400	25000500	25000600	25100115	28000250	25000350
									FURNISHED EX CU YD	SEED CL 2A ACRE	NIT FERT NUT POUND	PHOS FERT NUT POUND	POT FERT NUT POUND	MULCH METH 2 ACRE	TEMP EROS CONT SEED POUND	SEED CL 7 ACRE
58	IL 1/US 150	RURAL	39.807700	-87.673056	5.19	NB	DL	Dep SN 023-0003	5.0	0.01	0.9	0.9	0.9	0.01	4.0	0.03
59	IL 1/US 150	RURAL	39.807375	-87.673204	5.22	NB	DL	Appr SN 023-0003	7.5	0.01	0.9	0.9	0.9	0.01	4.0	0.03
60	IL 1/US 150	RURAL	39.806905	-87.673507	5.26	SB	DL	Dep SN 023-0003								
61	IL 1/US 150	RURAL	39.808047	-87.673022	5.17	SB	DL	Appr SN 023-0003 (S side of PE)								
62	IL 1/US 150	RURAL	39.808756	-87.672625	5.11	SB	DL	Appr (N side of PE)								
63	IL 1/US 150	RURAL	39.810803	-87.671686	4.96	NB	DL	SN 023-8061	15.0	0.02	1.8	1.8	1.8	0.02	8.0	0.06
64	IL 1/US 150	RURAL	39.810250	-87.672072	5.00	SB	DL	SN 023-8061	7.5	0.01	0.9	0.9	0.9	0.01	4.0	0.03
65	IL 1/US 150	RURAL	39.812569	-87.671247	4.84	NB	DL	SN 023-8024	15.0	0.02	1.8	1.8	1.8	0.02	8.0	0.06
66	IL 1/US 150	RURAL	39.812600	-87.671392	4.84	SB	DL	SN 023-8024	15.0	0.02	1.8	1.8	1.8	0.02	8.0	0.06
67	IL 1/US 150	RURAL	39.814222	-87.670981	4.72	SB	DL	(S side of PE)	7.5	0.01	0.9	0.9	0.9	0.01	4.0	0.03
68	IL 1/US 150	RURAL	39.835806	-87.665778	3.22	SB	DL	SN 023-8022	15.0	0.02	1.8	1.8	1.8	0.02	8.0	0.06
69	IL 1/US 150	RURAL	39.836575	-87.665500	3.16	NB	DL	SN 023-8022	15.0	0.02	1.8	1.8	1.8	0.02	8.0	0.06
70	IL 1/US 150	RURAL	39.845308	-87.662947	2.54	SB	DL	SN 023-8021	15.0	0.02	1.8	1.8	1.8	0.02	8.0	0.06
71	IL 1/US 150	RURAL	39.850614	-87.660464	2.16	NB	DL	SN 023-8020	15.0	0.02	1.8	1.8	1.8	0.02	8.0	0.06
72	IL 1/US 150	RURAL	39.850639	-87.660622	2.16	SB	DL	SN 023-8020	15.0	0.02	1.8	1.8	1.8	0.02	8.0	0.06
73	IL 1/US 150	RURAL	39.852297	-87.659903	2.03	SB	DL	Along railway	15.0	0.02	1.8	1.8	1.8	0.02	8.0	0.06
74	US 36	RURAL	39.792361	-87.921692	2.52	EB	DL	Appr SN 023-0027	7.5	0.01	0.9	0.9	0.9	0.01	4.0	0.03
75	US 36	RURAL	39.792364	-87.920331	2.59	EB	DL	Dep SN 023-0027	7.5	0.01	0.9	0.9	0.9	0.01	4.0	0.03
76	US 36	RURAL	39.792433	-87.921431	2.54	WB	DL	Dep SN 023-0027	7.5	0.01	0.9	0.9	0.9	0.01	4.0	0.03
77	US 36	RURAL	39.792500	-87.920064	2.61	WB	DL	Appr SN 023-0027	7.5	0.01	0.9	0.9	0.9	0.01	4.0	0.03
78	US 36	RURAL	39.792378	-87.901628	3.59	EB	DL	Appr SN 023-0028	7.5	0.01	0.9	0.9	0.9	0.01	4.0	0.03
79	US 36	RURAL	39.792381	-87.900486	3.65	EB	DL	Dep SN 023-0028	7.5	0.01	0.9	0.9	0.9	0.01	4.0	0.03
80	US 36	RURAL	39.792519	-87.900486	3.64	WB	DL	Appr SN 023-0028	7.5	0.01	0.9	0.9	0.9	0.01	4.0	0.03
81	US 36	RURAL	39.792517	-87.901650	3.59	WB	DL	Dep SN 023-0028	7.5	0.01	0.9	0.9	0.9	0.01	4.0	0.03
82	US 36	RURAL	39.792611	-87.875131	5.00	WB	DL	SN 023-2013 & 023-8066	15.0	0.02	1.8	1.8	1.8	0.02	8.0	0.06
83	US 36	RURAL	39.792483	-87.874017	5.06	EB	DL	SN 023-2013	7.5	0.01	0.9	0.9	0.9	0.01	4.0	0.03
84	US 36	RURAL	39.792572	-87.853017	6.19	EB	DL	Appr SN 023-0031	7.5	0.01	0.9	0.9	0.9	0.01	4.0	0.03
85	US 36	RURAL	39.792697	-87.853030	6.19	WB	DL	Dep SN 023-0031	7.5	0.01	0.9	0.9	0.9	0.01	4.0	0.03
86	US 36	RURAL	39.792700	-87.852503	6.21	WB	DL	Appr (SN 023-0031	7.5	0.01	0.9	0.9	0.9	0.01	4.0	0.03
87	US 36	RURAL	39.792514	-87.797361	9.15	WB	DL	Dep SN 023-0032	7.5	0.01	0.9	0.9	0.9	0.01	4.0	0.03
88	US 36	RURAL	39.792383	-87.796514	9.20	EB	DL	Dep SN 023-0032	7.5	0.01	0.9	0.9	0.9	0.01	4.0	0.03
89	US 36	RURAL	39.792372	-87.797667	9.13	EB	DL	Appr SN 023-0032	7.5	0.01	0.9	0.9	0.9	0.01	4.0	0.03
90	US 36	RURAL	39.792508	-87.796219	9.21	WB	DL	Appr SN 023-0032	7.5	0.01	0.9	0.9	0.9	0.01	4.0	0.03
91	US 36	RURAL	39.792069	-87.732169	12.61	EB	DL	Appr SN 023-0007	7.5	0.01	0.9	0.9	0.9	0.01	4.0	0.03
92	US 36	RURAL	39.792042	-87.731225	12.66	EB	DL	Dep SN 023-0007	7.5	0.01	0.9	0.9	0.9	0.01	4.0	0.03
93	US 36	RURAL	39.792222	-87.732211	12.61	WB	DL	Dep SN 023-0007	7.5	0.01	0.9	0.9	0.9	0.01	4.0	0.03
94	US 36	RURAL	39.792236	-87.731011	12.67	WB	DL	Appr SN 023-0007	7.5	0.01	0.9	0.9	0.9	0.01	4.0	0.03
95	US 36	RURAL	39.792386	-87.686333	15.05	EB	DL	Appr SN 023-9911								
96	US 36	RURAL	39.792497	-87.686299	15.05	WB	DL	Dep SN 023-9911								
97	US 36	RURAL	39.792400	-87.685636	15.09	EB	DL	Dep SN 023-9911								
98	US 36	RURAL	39.792506	-87.685606	15.09	WB	DL	Appr SN 023-9911								
99	US 36	RURAL	39.792781	-87.648142	17.08	EB	DL	SN 023-8311	7.5	0.01	0.9	0.9	0.9	0.01	4.0	0.03
100	US 36	RURAL	39.793033	-87.650504	16.95	WB	DL	SN 023-8311	15.0	0.02	1.8	1.8	1.8	0.02	8.0	0.06
101	US 36	RURAL	39.793242	-87.637436	17.65	WB	DL	Appr SN 023-0010								
102	US 36	RURAL	39.796014	-87.552014	22.22	WB	DL	Appr SN 023-0030								
SUB TOTALS =									350.0	0.47	42.3	42.3	42.3	0.47	188.0	1.41
EDGAR URBAN TOTALS =									0.0	0.00	0	0	0	0	0.0	0.00
EDGAR RURAL TOTALS =									350.0	0.47	42.3	42.3	42.3	0.47	188.0	1.41
EDGAR TOTALS =									350.0	0.47	42.3	42.3	42.3	0.47	188.0	1.41

MODEL: \\MODELNAME
 FILE: \\FILENAME
 PROJECT: \\PROJECTNAME
 OFFICE: \\OFFICENAME
 DRAWING: \\DRAWINGNAME
 DATE: \\DATE

USER NAME = ppersonbr	DESIGNED -	REVISED -	STATE OF ILLINOIS DEPARTMENT OF TRANSPORTATION	SCHEDULE OF QUANTITIES EDGAR COUNTY				F.A. RTE.	SECTION	COUNTY	TOTAL SHEETS	SHEET NO.
DRAWN -	REVISOR -	REVISION -		SCALE: NONE SHEET 3 OF 3 SHEETS STA. TO STA.				VAR	D5 HSIP GR 2018-1	VAR	23	20
PLOT SCALE = 40.0000' / in.	CHECKED -	REVISOR -						CONTRACT NO. 70C85				
PLOT DATE = 2/1/2018	DATE -	REVISION -						ILLINOIS FED. AID PROJECT				

SCHEDULE OF QUANTITIES FINAL TOTALS – ALL COUNTIES

SHEET 1 OF 2

GUARDRAIL

		63200310	63000001	63000003	63000007	X6330725	63000030	63000050	63000035	78200005
		GR REM	SPBGR TY A 6 FT	SPBGR TY A 9 FT	SPBGR TY B 6 FT	SPBGR (SR)	SPGR ATT TO CULV	WPGR ATT CULV C1	BS PROT OF GR	GR REF TY A
		FOOT	FOOT	FOOT	FOOT	FOOT	FOOT	FOOT	FOOT	EACH
URBAN	MCLEAN TOTALS	2525.5	1675.0	0.0	0.0	0.0	0.0	0.0	0.0	57.0
URBAN	DEWITT TOTALS	175.0	25.0	0.0	0.0	0.0	0.0	0.0	0.0	1.0
URBAN	PIATT TOTALS	400.0	0.0	0.0	0.0	0.0	0.0	0.0	0.0	4.0
URBAN	CHAMPAIGN TOTALS	1397.0	900.0	0.0	0.0	0.0	0.0	0.0	0.0	28.0
URBAN	DOUGLAS TOTALS	0.0	0.0	0.0	0.0	0.0	0.0	0.0	0.0	0.0
URBAN	EDGAR TOTALS	0.0	0.0	0.0	0.0	0.0	0.0	0.0	0.0	0.0
URBAN TOTALS =		4497.5	2600.0	0.0	0.0	0.0	0.0	0.0	0.0	90.0
FINAL URBAN TOTALS =		4497.5	2600.0	0.0	0.0	0.0	0.0	0.0	0.0	90.0
RURAL	MCLEAN TOTALS	2443.8	375.0	850.0	0.0	0.0	0.0	0.0	0.0	27.0
RURAL	DEWITT TOTALS	506.0	350.0	0.0	0.0	0.0	0.0	0.0	0.0	6.0
RURAL	PIATT TOTALS	0.0	0.0	0.0	0.0	0.0	0.0	0.0	0.0	0.0
RURAL	CHAMPAIGN TOTALS	0.0	0.0	0.0	0.0	0.0	0.0	0.0	0.0	0.0
RURAL	DOUGLAS TOTALS	2699.1	862.5	0.0	50.0	75.0	75.0	0.0	0.0	41.0
RURAL	EDGAR TOTALS	8221.5	3137.5	0.0	225.0	162.5	137.5	50.0	312.5	122.0
RURAL TOTALS =		13870.4	4725.0	850.0	275.0	237.5	212.5	50.0	312.5	196.0
FINAL RURAL TOTALS =		13870.5	4725.0	850.0	275.0	237.5	212.5	50.0	312.5	196.0
FINAL PROJECT TOTALS =		18368.0	7325.0	850.0	275.0	237.5	212.5	50.0	312.5	286.0

TERMINALS

		63100045	63100085	63100089	X6310214	X6310088	63100041	63100167	63100169	72501000
		TBT TY 2	TBT TY 6	TBT TY 6B	TBT T6 SPL	TBT T6A SPL	TBT TY 1B	TBT TY 1 (SPL) TAN	TBT TY 1 (SPL) FLR	TERM MARK - DA
		EACH	EACH	EACH	EACH	EACH	EACH	EACH	EACH	EACH
URBAN	MCLEAN TOTALS	13.0	4.0	0.0	0.0	0.0	0.0	9.0	4.0	13.0
URBAN	DEWITT TOTALS	0.0	1.0	0.0	0.0	0.0	0.0	0.0	1.0	1.0
URBAN	PIATT TOTALS	0.0	4.0	0.0	0.0	0.0	0.0	0.0	4.0	4.0
URBAN	CHAMPAIGN TOTALS	3.0	3.0	0.0	0.0	0.0	0.0	8.0	0.0	8.0
URBAN	DOUGLAS TOTALS	0.0	0.0	0.0	0.0	0.0	0.0	0.0	0.0	0.0
URBAN	EDGAR TOTALS	0.0	0.0	0.0	0.0	0.0	0.0	0.0	0.0	0.0
URBAN TOTALS =		16.0	12.0	0.0	0.0	0.0	0.0	17.0	9.0	26.0
FINAL URBAN TOTALS =		16.0	12.0	0.0	0.0	0.0	0.0	17.0	9.0	26.0
RURAL	MCLEAN TOTALS	0.0	4.0	0.0	0.0	2.0	0.0	8.0	6.0	14.0
RURAL	DEWITT TOTALS	0.0	0.0	0.0	0.0	0.0	0.0	0.0	2.0	2.0
RURAL	PIATT TOTALS	0.0	0.0	0.0	0.0	0.0	0.0	0.0	0.0	0.0
RURAL	CHAMPAIGN TOTALS	0.0	0.0	0.0	0.0	0.0	0.0	0.0	0.0	0.0
RURAL	DOUGLAS TOTALS	5.0	7.0	4.0	1.0	4.0	4.0	4.0	11.0	20.0
RURAL	EDGAR TOTALS	7.0	19.0	4.0	0.0	4.0	4.0	27.0	27.0	54.0
RURAL TOTALS =		12.0	30.0	8.0	1.0	10.0	8.0	39.0	46.0	90.0
FINAL RURAL TOTALS =		12.0	30.0	8.0	1.0	10.0	8.0	39.0	46.0	90.0
FINAL PROJECT TOTALS =		28.0	42.0	8.0	1.0	10.0	8.0	56.0	55.0	116.0

MODEL: \\MODEL\MAME FILE NAME: \\PIATT\BIBID\NITE\Illinois\gov\PIATT\Documents\DOT Office\BIBID\T 5\Projects\0570C85\CADDData\CAD\Sheet\0570C85-phs-schedule.dgn

USER NAME = ppersonbr	DESIGNED -	REVISED -
	DRAWN -	REVISED -
PLOT SCALE = 40.0000 ' / in.	CHECKED -	REVISED -
PLOT DATE = 2/21/2018	DATE -	REVISED -

**STATE OF ILLINOIS
DEPARTMENT OF TRANSPORTATION**

**SCHEDULE OF QUANTITIES
FINAL TOTALS – ALL COUNTIES**

SCALE: NONE SHEET 1 OF 2 SHEETS STA. TO STA.

F.A. RTE.	SECTION	COUNTY	TOTAL SHEETS	SHEET NO.
VAR	D5 HSIP GR 2018-1	VAR	23	21
CONTRACT NO. 70C85				
ILLINOIS FED. AID PROJECT				

SCHEDULE OF QUANTITIES FINAL TOTALS – ALL COUNTIES

SHEET 2 OF 2

EARTHWORK

		20400800	25000210	25000400	25000500	25000600	25100115	28000250	25000350
		FURNISHED EX	SEED CL 2A	NIT FERT NUT	PHOS FERT NUT	POT FERT NUT	MULCH METH 2	TEMP EROS CONT SEED	SEED CL 7
		CU YD	ACRE	POUND	POUND	POUND	ACRE	POUND	ACRE
URBAN	MCLEAN TOTALS	50.4	0.08	7.9	7.9	7.9	0.08	32.0	0.24
URBAN	DEWITT TOTALS	7.5	0.01	0.9	0.9	0.9	0.01	4.0	0.03
URBAN	PIATT TOTALS	30.0	0.04	3.6	3.6	3.6	0.04	16.0	0.12
URBAN	CHAMPAIGN TOTALS	45.0	0.06	5.4	5.4	5.4	0.06	24.0	0.18
URBAN	DOUGLAS TOTALS	0.0	0.00	0.0	0.0	0.0	0.00	0.0	0.00
URBAN	EDGAR TOTALS	0.0	0.00	0.0	0.0	0.0	0.00	0.0	0.00
URBAN TOTALS =		132.9	0.19	17.8	17.8	17.8	0.19	76.0	0.57
FINAL URBAN TOTALS =		135.0	0.25	18.0	18.0	18.0	0.25	76.0	0.75
RURAL	MCLEAN TOTALS	83.2	0.10	9.6	9.6	9.6	0.10	40.0	0.30
RURAL	DEWITT TOTALS	15.0	0.02	1.8	1.8	1.8	0.02	8.0	0.06
RURAL	PIATT TOTALS	0.0	0.00	0.0	0.0	0.0	0.00	0.0	0.00
RURAL	CHAMPAIGN TOTALS	0.0	0.00	0.0	0.0	0.0	0.00	0.0	0.00
RURAL	DOUGLAS TOTALS	120.0	0.16	14.4	14.4	14.4	0.16	64.0	0.48
RURAL	EDGAR TOTALS	350.0	0.47	42.3	42.3	42.3	0.47	188.0	1.41
RURAL TOTALS =		568.2	0.75	68.1	68.1	68.1	0.75	300.0	2.25
FINAL RURAL TOTALS =		570.0	0.75	69.0	69.0	69.0	0.75	300.0	2.25
FINAL PROJECT TOTALS =		705.0	1.00	87.0	87.0	87.0	1.00	376.0	3.00

MODEL: \\MODELNAME
 FILE NAME: \\FILENAME
 PROJECT: \\PROJECT
 OFFICE: \\OFFICE
 DRAWING: \\DRAWING
 DATE: \\DATE

USER NAME = piersonbr	DESIGNED -	REVISED -
	DRAWN -	REVISED -
PLOT SCALE = 40.0000 ' / in.	CHECKED -	REVISED -
PLOT DATE = 2/1/2018	DATE -	REVISED -

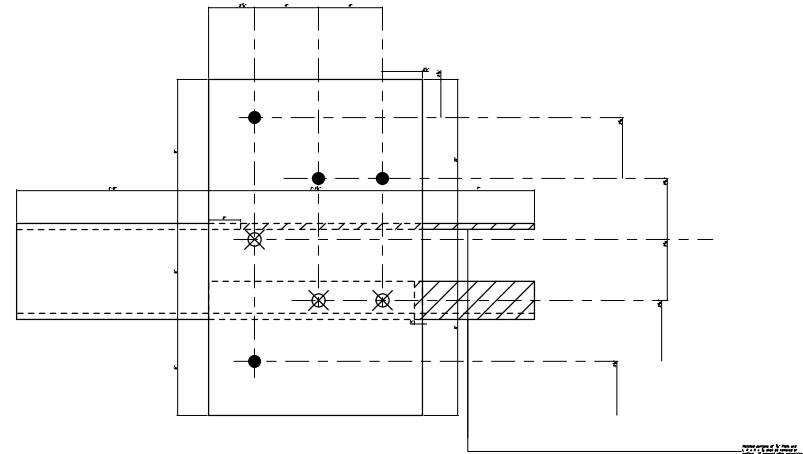
**STATE OF ILLINOIS
DEPARTMENT OF TRANSPORTATION**

**SCHEDULE OF QUANTITIES
FINAL TOTALS – ALL COUNTIES**

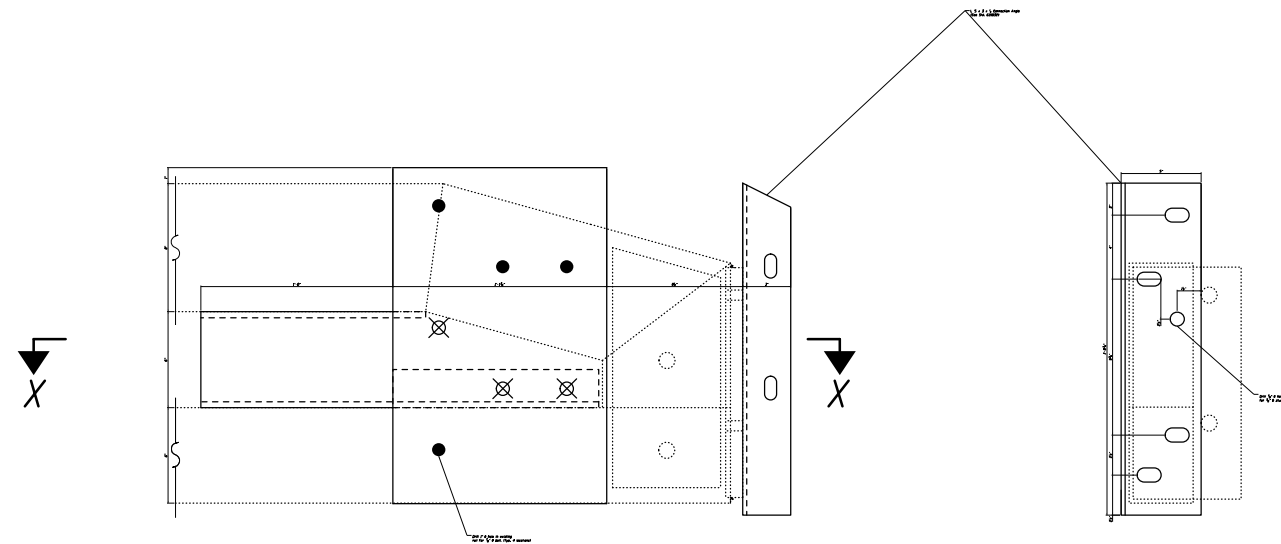
SCALE: NONE SHEET 2 OF 2 SHEETS STA. TO STA.

F.A. RTE.	SECTION	COUNTY	TOTAL SHEETS	SHEET NO.
VAR	D5 HSIP GR 2018-1	VAR	23	22
CONTRACT NO. 70C85				
ILLINOIS FED. AID PROJECT				

OPTION 1

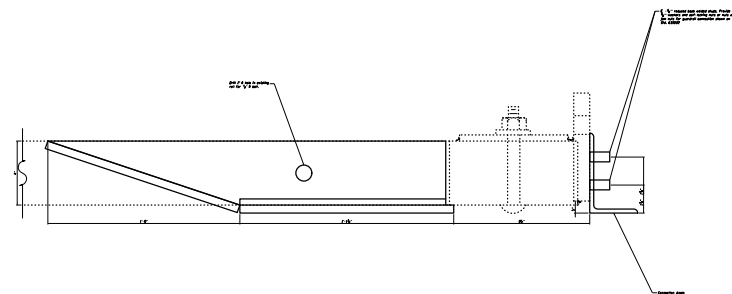


GUARDRAIL CONNECTION PLATE ASSEMBLY



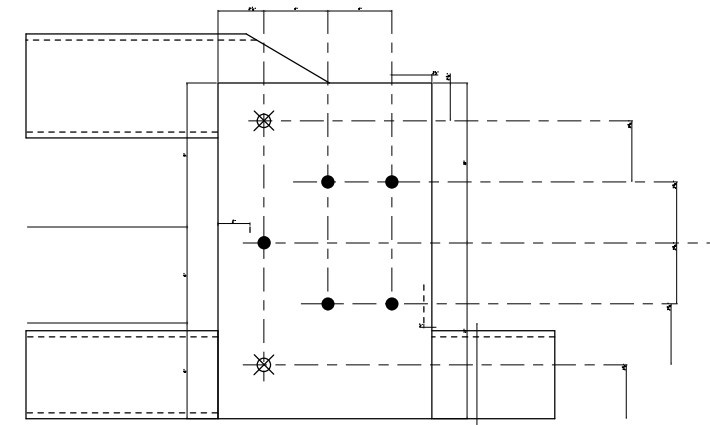
END OF RAIL DETAILS

END VIEW

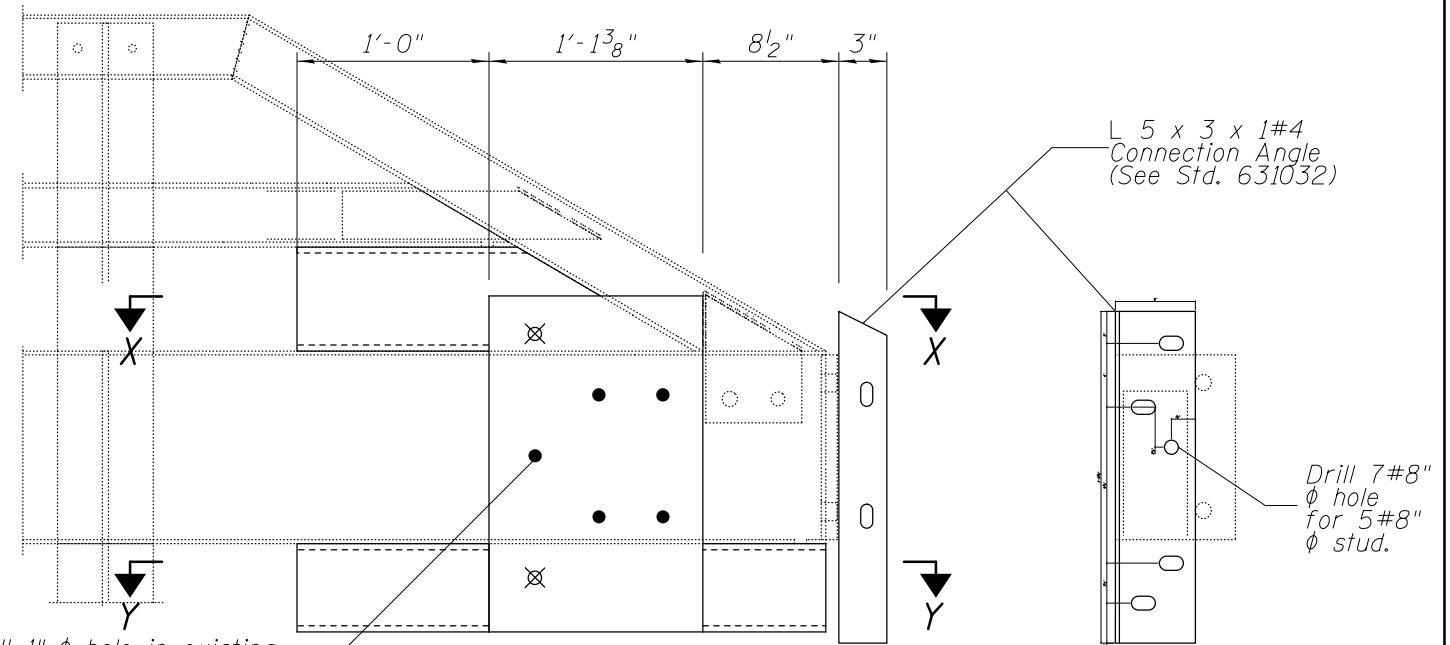


SECTION X-X

OPTION 2



GUARDRAIL CONNECTION PLATE ASSEMBLY

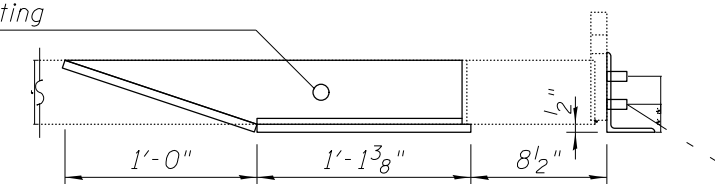


Drill 1" ϕ hole in existing rail for 7/8" ϕ bolt. (Typ. 5 locations)

END OF RAIL DETAILS

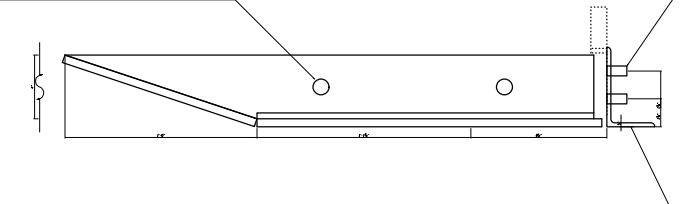
END VIEW

Drill 1" ϕ hole in existing rail for 7/8" ϕ bolt.



SECTION X-X

Drill 1" ϕ hole in existing rail for 7/8" ϕ bolt.



SECTION Y-Y

ϕ - 5#8" reduced base welded studs. Provide 4 - 5#8" washers and self-locking nuts or nuts and jam nuts for guardrail connection shown on Std. 631032

FILE NAME =	USER NAME = piersonbr	DESIGNED -	REVISED -
p:\1\084EBIDINTEG.illinois.gov\PI\DOT\Documents\DOT Offices\District 5\Projects\0570\Drawings\EA0\Sheets\0570C85-sht-det.dwg		DRAWN -	REVISED -
\$MODELNAME\$	PLOT SCALE = 2.0000' / in.	CHECKED -	REVISED -
	PLOT DATE = 2/1/2018	DATE -	REVISED -

STATE OF ILLINOIS
DEPARTMENT OF TRANSPORTATION

TRAFFIC BARRIER TERMINAL TYPE 6A
(MODIFIED) MOUNTING DETAILS

SCALE: SHEET 1 OF 1 SHEETS STA. TO STA.

F.A. RTE.	SECTION	COUNTY	TOTAL SHEETS	SHEET NO.
VAR	D5 HSIP GR 2018-1	VAR	23	23
CONTRACT NO. 70C85				
ILLINOIS FED. AID PROJECT				