

04-27-2018 LETTING ITEM 095

STATE OF ILLINOIS
DEPARTMENT OF TRANSPORTATION

**PROPOSED
HIGHWAY PLANS**

F.A.I. ROUTE 55/74 (I-55/I-74)
SECTION (MBPM 2018)BJR
PROJECT NHPP-TC4M(577)
BRIDGE JOINT REPAIR MCLEAN
COUNTY

F.A.I. RTE.	SECTION	COUNTY	TOTAL SHEETS	SHEET NO.
55/74	(MBPM 2018)BJR	MCLEAN	33	1
ILLINOIS			CONTRACT NO. 70C99	

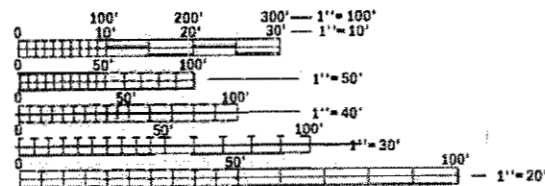
FOR INDEX OF SHEETS, SEE SHEET NO. 2
FOR SUMMARY OF QUANTITIES, SEE SHEET NO. 3

CURRENT TRAFFIC DATA

FAI-55/74 LEG. A			FAI-55/74 LEG. B		
2017	ADT	46,400	2017	ADT	47,000
2027	ADT	51,500	2027	ADT	51,200
2037	ADT	56,600	2037	ADT	55,500
2037	DHV	3,595	2037	DHV	4,290
	PU/PC%	70.9		PU/PC%	70.8
	SU %	3.0		SU %	3.7
	MU %	26.1		MU %	25.5

DESIGN DESIGNATION

FAI-55/74 - INTERSTATE



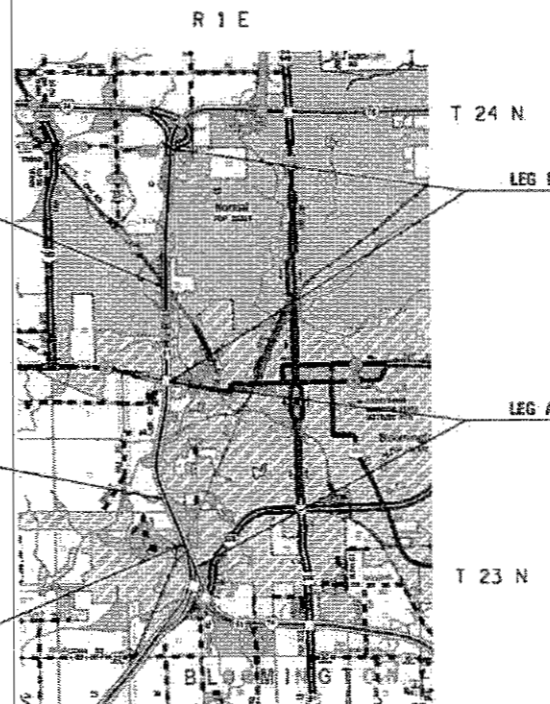
FULL SIZE PLANS HAVE BEEN PREPARED USING STANDARD ENGINEERING SCALES. REDUCED SIZED PLANS WILL NOT CONFORM TO STANDARD SCALES. IN MAKING MEASUREMENTS ON REDUCED PLANS, THE ABOVE SCALES MAY BE USED.

J.U.L.I.E.
JOINT UTILITY LOCATION INFORMATION FOR EXCAVATION
1-800-852-0123
OR 811

PROJECT ENGINEER: TIM BRANDENBURG
SQUAD LEADER: JEFF M. SHERER

CONTRACT NO. 70C99

C-95-021-18

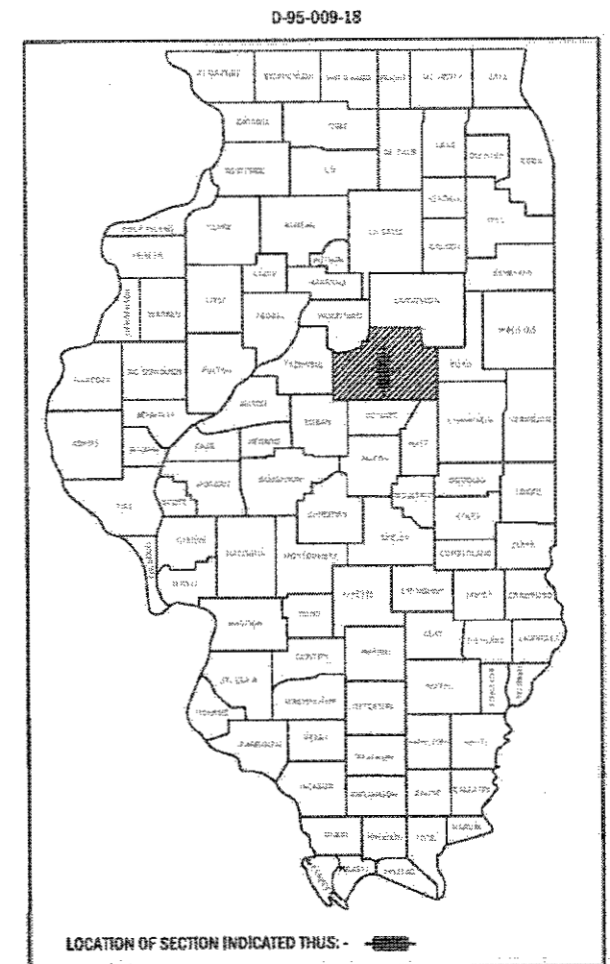


S.N. 057-0018 STA. 403+09.52 NB
S.N. 057-0019 STA. 403+09.52 SB
BRIDGE JOINT REPAIR
DECK SLAB REPAIR (PARTIAL DEPTH)

S.N. 057-0010 STA. 521+45.00 SB
S.N. 057-0011 STA. 521+45.00 NB
BRIDGE JOINT REPAIR
DECK SLAB REPAIR (PARTIAL DEPTH)

S.N. 057-0006 STA. 593+76.87 SB
S.N. 057-0007 STA. 593+76.87 NB
BRIDGE JOINT REPAIR
DECK SLAB REPAIR (PARTIAL DEPTH)

GROSS LENGTH = 970.00 FT. = 0.184 MILE
NET LENGTH = 970.00 FT. = 0.184 MILE



STATE OF ILLINOIS
DEPARTMENT OF TRANSPORTATION

SUBMITTED January 22, 2018
[Signature]
REGIONAL ENGINEER

[Signature]
ENGINEER OF DESIGN AND ENVIRONMENT

[Signature]
DIRECTOR OF HIGHWAYS PROJECT IMPLEMENTATION 3

PRINTED BY THE AUTHORITY
OF THE STATE OF ILLINOIS

INDEX OF SHEETS

SHEET NO.	ITEM
1	COVER SHEET
2	INDEX OF SHEETS/ HIGHWAY STANDARDS/ GENERAL NOTES
3-4	SUMMARY OF QUANTITIES
5-15	S.N. 057-0006 & 057-0007 DETAILS AND AS-BUILT PLANS
16-23	S.N. 057-0010 & 057-0011 DETAILS AND AS-BUILT PLANS
24-32	S.N. 057-0018 & 057-0019 DETAILS AND AS-BUILT PLANS
33	PAVEMENT MARKING DETAIL

LIST OF STANDARDS

STANDARD NO.	DESCRIPTION
000001-06	STANDARD SYMBOLS, ABBREVIATIONS AND PATTERNS
001001-02	AREAS OF REINFORCEMENT BARS
001006	DECIMAL OF AN INCH AND OF A FOOT
701101-05	OFF-ROAD OPERATIONS, MULTI-LANE 15' to 24" FROM EDGE OF PAVEMENT
701400-09	APPROACH TO LANE CLOSURE FREEWAY/EXPRESSWAY
701401-11	LANE CLOSURE FREEWAY/ EXPRESSWAY
701406-11	LANE CLOSURE FREEWAY/ EXPRESSWAY DAY OPERATIONS ONLY
701411-09	LANE CLOSURE MULTI-LANE, ENTRANCE OR EXIT RAMP, 45MPH OR MORE
701428-01	TRAFFIC CONTROL SETUP/REMOVAL FREEWAY/ EXPRESSWAY
701446-09	TWO-LANE CLOSURE FREEWAY/ EXPRESSWAY
780001-05	TYPICAL PAVEMENT MARKINGS
701901-07	TRAFFIC CONTROL DEVICES

GENERAL NOTES

G.N.-100

ENGLISH UNITS OF MEASUREMENT SHALL GOVERN OVER AND SUPERSEDE ANY METRIC UNITS SHOWN IN THIS CONTRACT. WHERE INCLUDED, METRIC UNITS ARE FOR INFORMATION ONLY.

G.N.- 609

PRIOR TO ROUTING TRAFFIC ONTO THE SHOULDERS AS SHOWN IN THE STAGING PLANS, THE CONTRACTOR SHALL SECURE THE GRATINGS ON SHOULDER INLETS AS DIRECTED BY THE ENGINEER. THIS WORK WILL BE PAID FOR ACCORDING TO ARTICLE 109.04.

G.N.-1004.01

COARSE AGGREGATE GRADATION CA-10 MAY BE USED WHENEVER COARSE AGGREGATE CA-6 IS SPECIFIED IN THE STANDARD SPECIFICATIONS.

THERE ARE NO COMMITMENTS ASSOCIATED WITH THIS PROJECT

AREA OF DECK SLAB REPAIR HAVE BEEN ESTIMATED FROM JULY, 2017 DECK SURVEY. THE ACTUAL QUANTITY AND LOCATIONS SHALL BE DETERMINED BY ENGINEER. THE ENGINEER SHALL SHOW THE ACTUAL LOCATIONS OF THE DECK REPAIRS ON DECK PATCHING DETAIL SHEETS.

MODEL: \$MODELNAME\$ FILE NAME: P:\11084810\11084810\FEG_ILM\11084810\Documents\DOT_Offices\Director: 3\Projects\157009\CADD\DrawStructures\157009-11\FinalPlans.dgn

USER NAME = sherer/jm	DESIGNED - JMS	REVISED -
	DRAWN - JMS	REVISED -
PLOT SCALE = 40.0000' / 1" =	CHECKED -	REVISED -
PLOT DATE = 1/9/2018	DATE - 08/29/2018	REVISED -

**STATE OF ILLINOIS
DEPARTMENT OF TRANSPORTATION**

INDEX OF SHEETS/ HIGHWAY STANDARDS GENERAL NOTES		F.A.I. RTE.	SECTION	COUNTY	TOTAL SHEETS	SHEET NO.
SCALE: NONE	SHEET 1 OF 1 SHEETS	55/74	(MBPM 2018)BJR	MCLEAN	33	2
STA. TO STA.		CONTRACT NO. 70C99				
ILLINOIS FED. AID PROJECT						

MODEL: SMOBELMAMES
 FILE NAME: P:\LOBATE\INTFES\Illinois\pav\IBDOT\Documents\DOT_Office\Sheet: 3\Projects\5370C99\CADD\DrawStructures\5370C99.dwg: Final Plans.dgn

CODE NO.	ITEM	UNIT	TOTAL QUANTITY	MCLEAN COUNTY FAI-55/FAI-74 URBAN INTERSTATE BRIDGE JOINT REPAIRS S.N. 057-0006 90% FED, 10% STATE	MCLEAN COUNTY FAI-55/FAI-74 URBAN INTERSTATE BRIDGE JOINT REPAIRS S.N. 057-0007 90% FED, 10% STATE	MCLEAN COUNTY FAI-55/FAI-74 URBAN INTERSTATE BRIDGE JOINT REPAIRS S.N. 057-0010 90% FED, 10% STATE	MCLEAN COUNTY FAI-55/FAI-74 URBAN INTERSTATE BRIDGE JOINT REPAIRS S.N. 057-0011 90% FED, 10% STATE	MCLEAN COUNTY FAI-55/FAI-74 URBAN INTERSTATE BRIDGE JOINT REPAIRS S.N. 057-0018 90% FED, 10% STATE	MCLEAN COUNTY FAI-55/FAI-74 URBAN INTERSTATE BRIDGE JOINT REPAIRS S.N. 057-0019 90% FED, 10% STATE
				0047	0047	0047	0047	0047	0047
50102400	CONCRETE REMOVAL	CU YD	1.7	1.7	0.0	0.0	0.0	0.0	0.0
50300255	CONCRETE SUPERSTRUCTURE	CU YD	1.7	1.7	0.0	0.0	0.0	0.0	0.0
50300300	PROTECTIVE COAT	SQ YD	18.0	18.0	0.0	0.0	0.0	0.0	0.0
67100100	MOBILIZACIÓN	LSUM	1.0	0.2	0.1	0.1	0.2	0.2	0.2
70100420	TRAFFIC CONTROL AND PROTECTION, STANDARD 701411	EACH	1.0	0.5	0.5	0.0	0.0	0.0	0.0
70100700	TRAFFIC CONTROL AND PROTECTION, STANDARD 701406	LSUM	1.0	0.2	0.2	0.2	0.2	0.1	0.1
70100800	TRAFFIC CONTROL AND PROTECTION, STANDARD 701401	LSUM	1.0	0.2	0.2	0.2	0.2	0.1	0.1
70100815	TRAFFIC CONTROL AND PROTECTION, STANDARD 701446	LSUM	1.0	0.2	0.2	0.2	0.2	0.1	0.1
70200100	NIGHTTIME WORK ZONE LIGHTING	LSUM	1.0	0.2	0.2	0.2	0.2	0.1	0.1
X7010218	TRAFFIC CONTROL AND PROTECTION, (SPECIAL)	EACH	1.0	0.0	0.0	0.0	0.0	1.0	0.0
X7010410	SPEED DISPLAY TRAILER	CAL MO	3.0	0.5	0.5	0.5	0.5	0.5	0.5
X7015005	CHANGEABLE MESSAGE SIGN	CAL DA	45.0	7.5	7.5	7.5	7.5	7.5	7.5
Z0001800	APPROACH SLAB REPAIR (PARTIAL DEPTH)	SQ YD	46.2	0.0	1.8	6.3	21.7	0.0	16.4
Z0012754	STRUCTURAL REPAIR OF CONCRETE (DEPTH EQUAL TO OR LESS THAN 5 INCHES)	SQ FT	33.0	0.0	0.0	0.0	0.0	0.0	33.0
Z0016200	DECK SLAB REPAIR (PARTIAL)	SQ YD	205.5	0.0	1.4	5.3	1.0	196.4	1.4

15

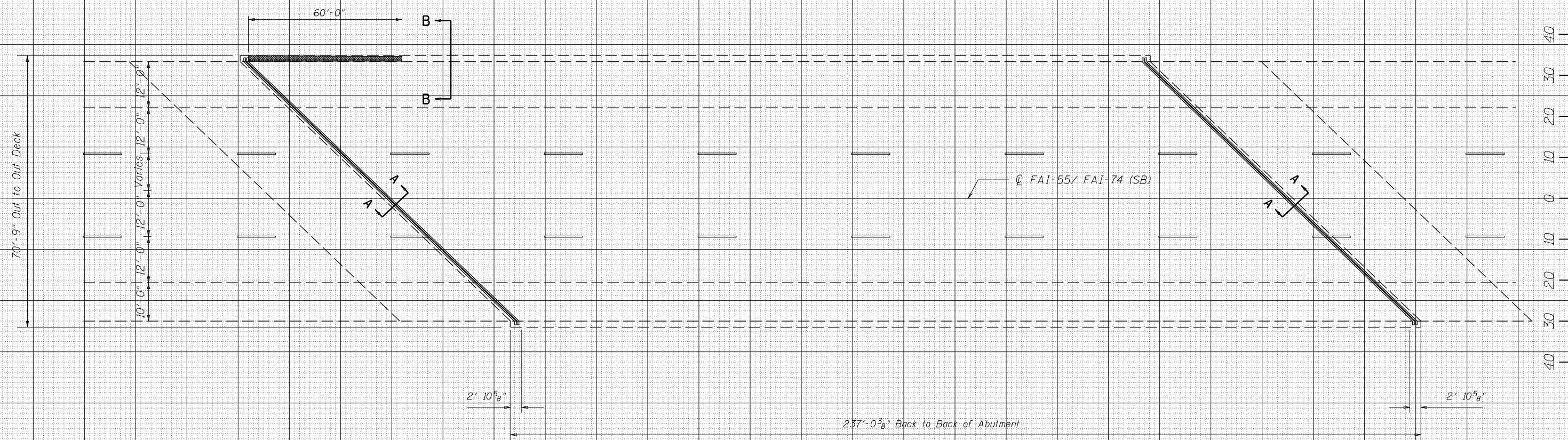
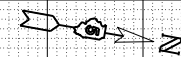
USER NAME = sheresim	DESIGNED - JMS	REVISED -
DRAWN - JMS	CHECKED -	REVISED -
PLOT SCALE = 40.0000' / in.	DATE - 08/29/2017	REVISED -
PLOT DATE = 1/22/2018		

STATE OF ILLINOIS
DEPARTMENT OF TRANSPORTATION

SUMMARY OF QUANTITIES			
SCALE: NONE	SHEET 1	OF 2 SHEETS	STA. TO STA.

F.A.I. RTE. 55/74	SECTION (MBPM 2018)BJR	COUNTY MCLEAN	TOTAL SHEETS 33	SHEET NO. 3
CONTRACT NO. 70C99				
ILLINOIS FED. AID PROJECT				

S.N. 057-0006



AREA OF DECK SLAB REPAIR HAVE BEEN ESTIMATED FROM JULY, 2017 DECK SURVEY. THE ACTUAL QUANTITY AND LOCATIONS SHALL BE DETERMINED BY ENGINEER. THE ENGINEER SHALL SHOW THE ACTUAL LOCATIONS OF THE DECK REPAIRS ON DECK PATCHING DETAIL SHEETS.

DATE	BY	SURVEYED	PLOTTED
		NOTE BOOK	TEMPLATE
		AREAS CHECKED	AREAS CHECKED
		NO.	

DATE	BY	SURVEYED	PLOTTED
		NOTE BOOK	TEMPLATE
		AREAS CHECKED	AREAS CHECKED
		NO.	

MODEL: SHODELNAME.S
FILE NAME: pwwllghbndntec_illinois.pwd\DOT\Documents\DOT_Offices\District_3\projects\570-99-CAD\Drawings\Structures\570C99-sbs-FinalPlans.dgn

USER NAME = shererjm	DESIGNED -	REVISED -
PLOT SCALE = 40.0000' / in.	DRAWN -	REVISED -
PLOT DATE = 1/9/2018	CHECKED -	REVISED -
	DATE -	REVISED -

STATE OF ILLINOIS
DEPARTMENT OF TRANSPORTATION

DETAIL OF PARTIAL DEPTH PATCHING
S.N. 057-0006 (SB)

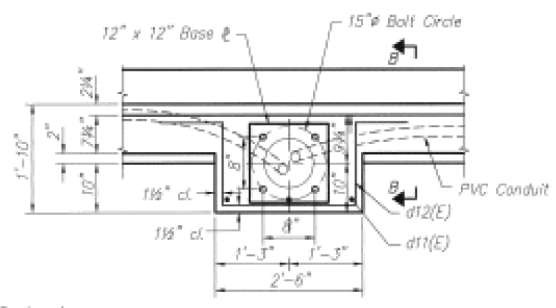
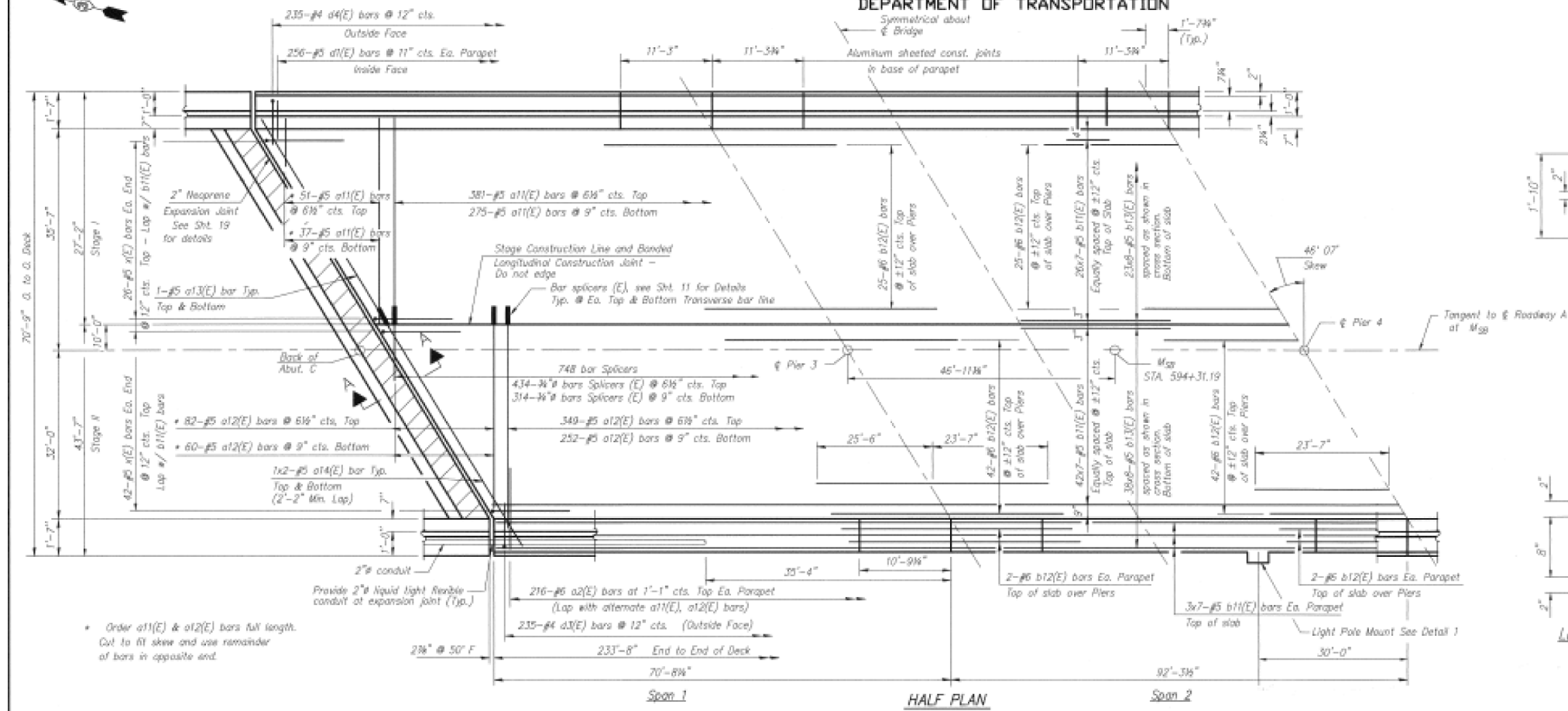
SCALE: SHEET 2 OF 3 SHEETS STA. TO STA.

F.A.I. RTE.	SECTION	COUNTY	TOTAL SHEETS	SHEET NO.
55/74	(MBPM 2018)BJR	MCLEAN	33	6
ILLINOIS FED. AID PROJECT			CONTRACT NO. 70C99	

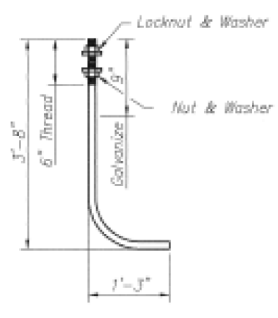
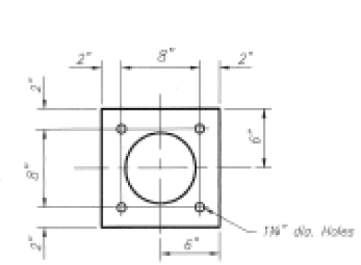
STATE OF ILLINOIS
DEPARTMENT OF TRANSPORTATION

DATE	REVISED	BY	NO.	OF	SHEETS
5/5/74		MCLEAN	339	282	OF 29 SHEETS

*57-0.7R, 18R, 51, 16, 16R

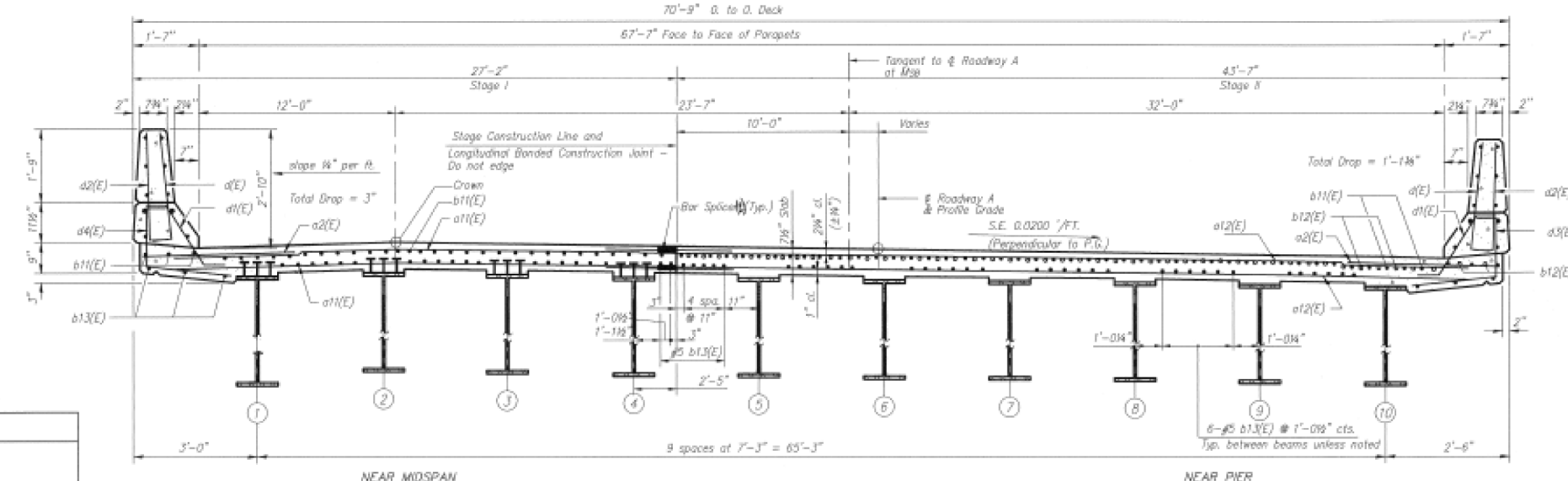


PLAN DETAIL 1
Note:
Cost of anchor bolts, conduit, elbows and junction boxes is incidental to the item "Concrete Superstructure".



LIGHT POLE MOUNT DETAILS

* Order a11(E) & a12(E) bars full length. Cut to fit skew and use remainder of bars in opposite end.



- Notes:**
- See Sheet 10 for Superstructure Details, Parapet Reinforcement, and Bill of Material.
 - Reinforcement bars designated (E) shall be epoxy coated.
 - Bars indicated thus 20 x 3-#5 etc. indicates 20 lines of bars with 5 lengths per line.
 - See Sheet 10 for Section A-A.
 - Minimum lap length for #5 bars = 1'-8", except as noted.
 - Hatched area to be poured after Superstructure forms have been removed. Quantity of concrete included with "Concrete Superstructure".
- Mark this Sheet with Sheet 10.

**DECK REINFORCEMENT
SOUTHBOUND
155/74 OVER THE S.P.C.S.L. CORP. RAILROAD
F.A.I. RTE. 55 (155/74) SECTION 7VBR
MCLEAN COUNTY
STA. 593+76.86
STRUCTURE NUMBER: 057-0006**

DESIGNED	DAS
CHECKED	MPP
DRAWN	RSB/MBS
CHECKED	MPP

**HAZELET & ERDAL
DAMES & MOORE**
FILE NUMBER: 612/SPC31,38

CROSS SECTION
(Looking South)

STATE OF ILLINOIS
DEPARTMENT OF TRANSPORTATION

AS-BUILT PLANS 057-0006
(INFORMATION ONLY)

USER NAME = sherejm	DESIGNED -	REVISED -
PLOT SCALE = 40.0000' / in.	DRAWN -	REVISED -
PLOT DATE = 1/9/2018	CHECKED -	REVISED -
	DATE -	REVISED -

SCALE: NONE	SHEET 2	OF 8 SHEETS	STA.	TO STA.	F.A.I. RTE. 55/74	SECTION (MBPM 2018)BJR	COUNTY MCLEAN	TOTAL SHEETS 33	SHEET NO. 9
					CONTRACT NO. 70C99				
					ILLINOIS FED. AID PROJECT				

MODEL: MODIFIED.MXD FILE NAME: P:\ILLINOIS\BID\2018\057-0006\AS-BUILT\057-0006-02-SPC31,38.dwg

STATE OF ILLINOIS
DEPARTMENT OF TRANSPORTATION

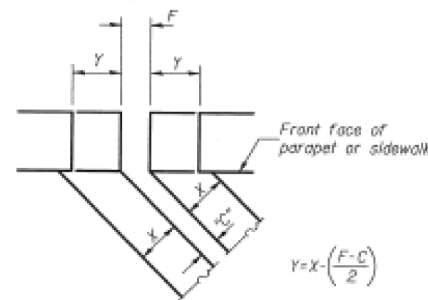
PROJECT NO.	SECTION	COUNTY	SHEET NO.	TOTAL SHEETS
F.A.I. 55	*	MCLEAN	339	285
SHEET NO. 12				
29 SHEETS				

Joint Size	10° at 50°F	10° at 50°F
2"	2"	1 1/2" Min.
2 1/2"	2 1/2"	1 3/4" Min.
4"	3"	2 1/2" Min.

INSTALLATION NOTES

- Install continuous seal in roadway, parapet, curb, and sidewalk.
- Install anchor blocks as indicated.

NOTE A: Maximum spacing of anchor bolts shall be 12" centers.



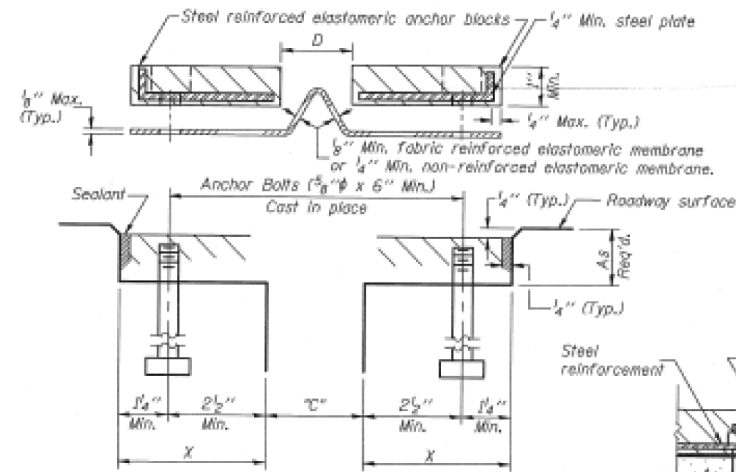
FORMING BLOCKOUT SKETCH

$$Y = X \cdot \left(\frac{F - C}{2} \right)$$

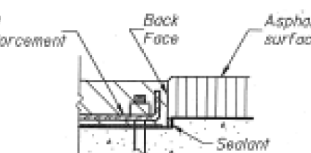
For dimension "F" see sheet # 9

SKREW LIMITATIONS

The details of the anchor blocks and the elastomeric membrane in the parapet, as shown, are for up to 50° skews. For skews greater than 50°, the anchor blocks and the elastomeric membrane, installed according to dimension "D", might require modifications to insure a minimum clearance of 1/2" from centerline of anchor studs to edge of parapet opening. The anchor blocks and the elastomeric membrane shall also be installed to the top of the parapet with the anchor studs spaced at ±12" cts.



CROSS SECTION



ANCHOR BLOCK WITH ASPHALT SURFACE

GENERAL NOTES

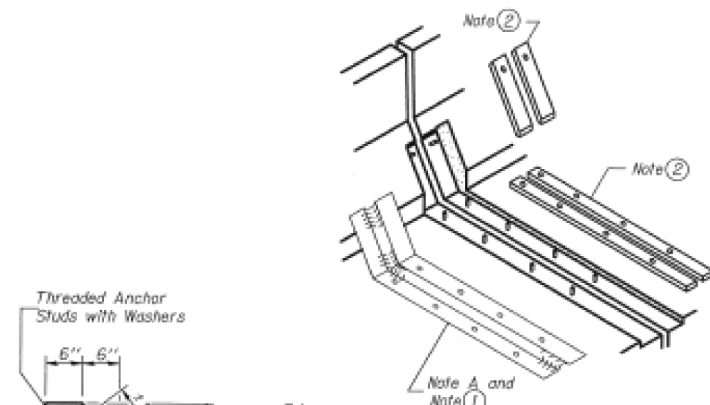
Continuous Seal Neoprene Expansion Joint shall consist of molded anchor blocks of elastomer and steel, field assembled over continuous lengths of elastomeric membrane.

The elastomeric membrane shall be preformed with a single or a double upward convolution that will have a "memory" to return to its molded position upon joint closure.

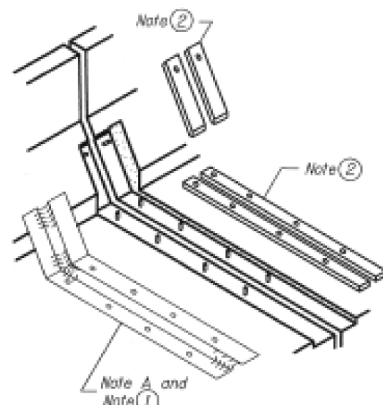
The convolution length shall be such that the extended length will not be greater than the manufactured length when the joint is fully expanded in its design range and will not protrude above the anchor blocks when the joint is fully compressed.

Joint openings shall be adjusted according to Article 503.10(c) of the Standard Specifications when the deck is poured at an ambient temperature other than 50° F.

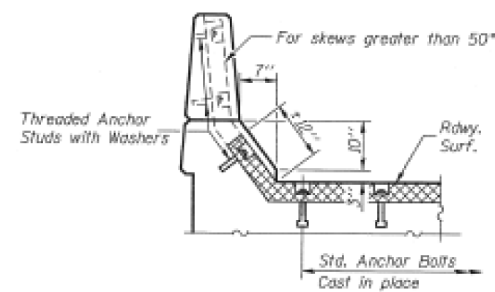
The parapet and roadway membrane shall be made continuous by an approved vulcanizing process. Lapping will not be permitted.



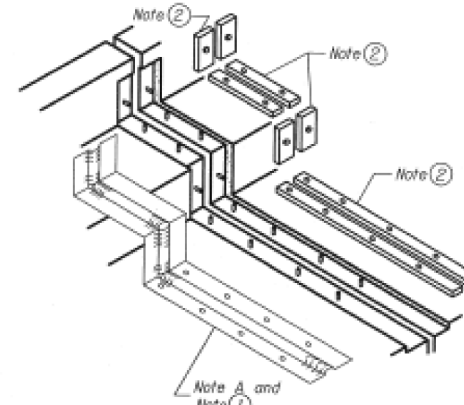
AT CURB



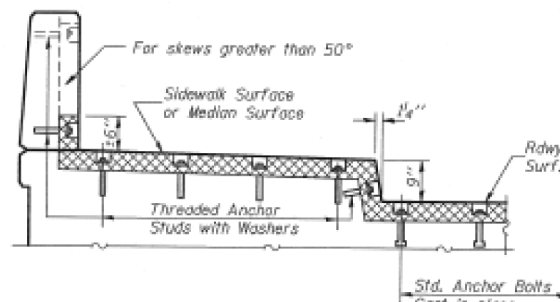
AT PARAPET



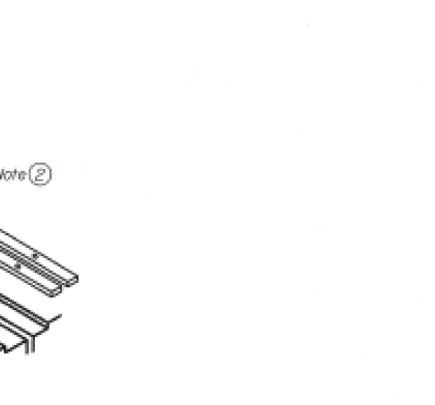
AT PARAPET



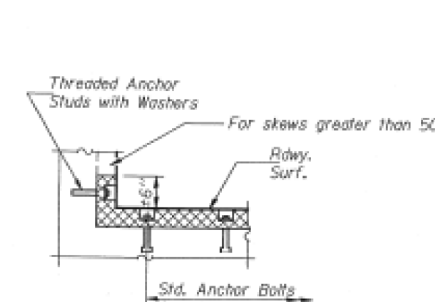
AT SIDEWALK OR MEDIAN



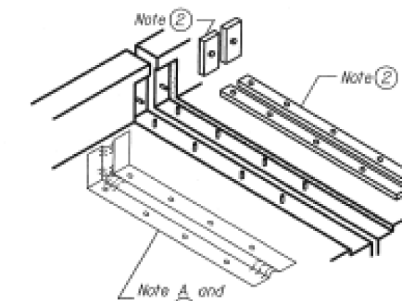
AT SIDEWALK OR MEDIAN TYPICAL END TREATMENTS



AT WALL



AT WALL



CONTINUOUS SEAL TYPE NEOPRENE EXPANSION JOINTS
For 2", 2 1/2" and 4" Movement

NEOPRENE EXPANSION JOINTS SOUTHBOUND
155/74 OVER S.P.C.S.L. CORP RAILROAD
F.A.I. RTE. 55 (155/74) SECTION 7VBR
MCLEAN COUNTY
STATION 593+76.86
STRUCTURE NO. 057-0006

DESIGNED	CAD
CHECKED	NPP
DRAWN	RSB
CHECKED	NPP

EJ-CS 4-30-97

STATE OF ILLINOIS
DEPARTMENT OF TRANSPORTATION

AS-BUILT PLANS 057-0006
(INFORMATION ONLY)

SCALE: NONE SHEET 4 OF 8 SHEETS STA. TO STA.

F.A.I. RTE.	SECTION	COUNTY	TOTAL SHEETS	SHEET NO.
55/74	(MBPM 2018)BJR	MCLEAN	33	11
CONTRACT NO. 70C99				

ILLINOIS FED. AID PROJECT

DATE	
BY	
FINAL SURVEY	SURVEYED
NOTE BOOK	PLOTTED
NO.	TEMPLATE
	AREAS CHECKED
	AREAS CHECKED

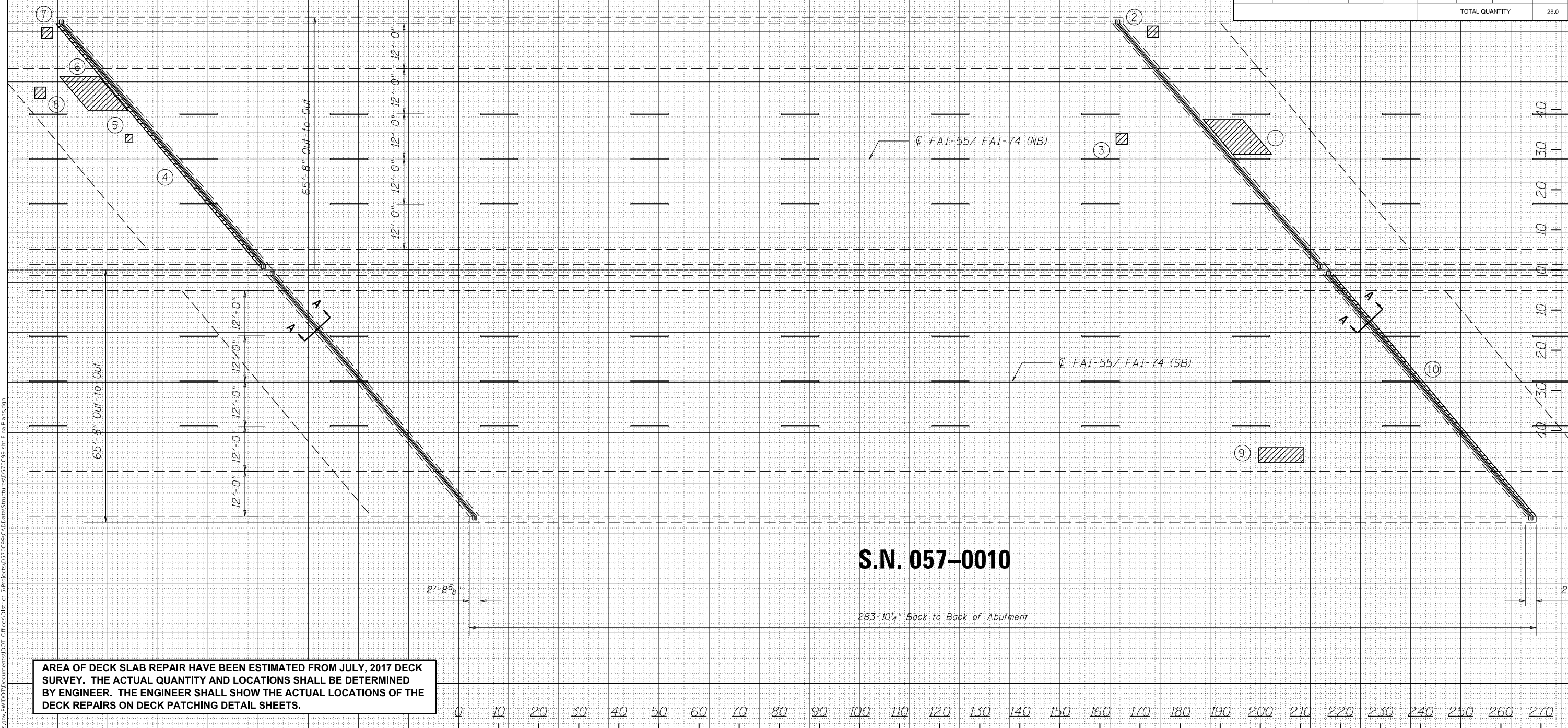
DATE	
BY	
ORIGINAL SURVEY	SURVEYED
NOTE BOOK	PLOTTED
NO.	TEMPLATE
	AREAS CHECKED
	AREAS CHECKED

MODEL: SH06E1MAME5
 FILE NAME: pwwllchbndntec_illinois.pwd\DOT\Documents\DOT_Offices\District_3\Projects\570-99-CAD\Drawings\Structures\570C99-sis-FinalPlans.dgn

S.N. 057-0011

S.N. 057-0010

PATCH NO.	SIZE		APPR SLAB REPAIR (PARTIAL DEPTH) SQ YD	DECK SLAB REPAIR (PARTIAL DEPTH) SQ YD	PATCH NO.	SIZE		APPR SLAB REPAIR (PARTIAL DEPTH) SQ YD	DECK SLAB REPAIR (PARTIAL DEPTH) SQ YD
	LENGTH (FT)	WIDTH (FT)				LENGTH (FT)	WIDTH (FT)		
1	8	12	10.70	0.00	7	3	3	1.00	0.00
2	3	3	1.00	0.00	8	3	3	1.00	0.00
3	3	3	0.00	1.00	9	12	4	0.00	5.33
4	84	0.67	6.25	0.00	10	84	0.67	6.25	
5	2	2	0.44	0.00					
6	6	12	1.33	0.00					
TOTAL QUANTITY								28.0	6.3



AREA OF DECK SLAB REPAIR HAVE BEEN ESTIMATED FROM JULY, 2017 DECK SURVEY. THE ACTUAL QUANTITY AND LOCATIONS SHALL BE DETERMINED BY ENGINEER. THE ENGINEER SHALL SHOW THE ACTUAL LOCATIONS OF THE DECK REPAIRS ON DECK PATCHING DETAIL SHEETS.

USER NAME = shererjm	DESIGNED -	REVISED -
PLOT SCALE = 40.0000' / in.	DRAWN -	REVISED -
PLOT DATE = 1/9/2018	CHECKED -	REVISED -
	DATE -	REVISED -

STATE OF ILLINOIS
 DEPARTMENT OF TRANSPORTATION

DETAIL OF PARTIAL DEPTH PATCHING
 S.N. 057-0010 & S.N. 057-0011

SCALE: SHEET 2 OF 2 SHEETS STA. TO STA.

F.A.I. RTE. 55/74	SECTION (MBPM 2018)BJR	COUNTY MCLEAN	TOTAL SHEETS 33	SHEET NO. 17
CONTRACT NO. 70C99			ILLINOIS FED. AID PROJECT	

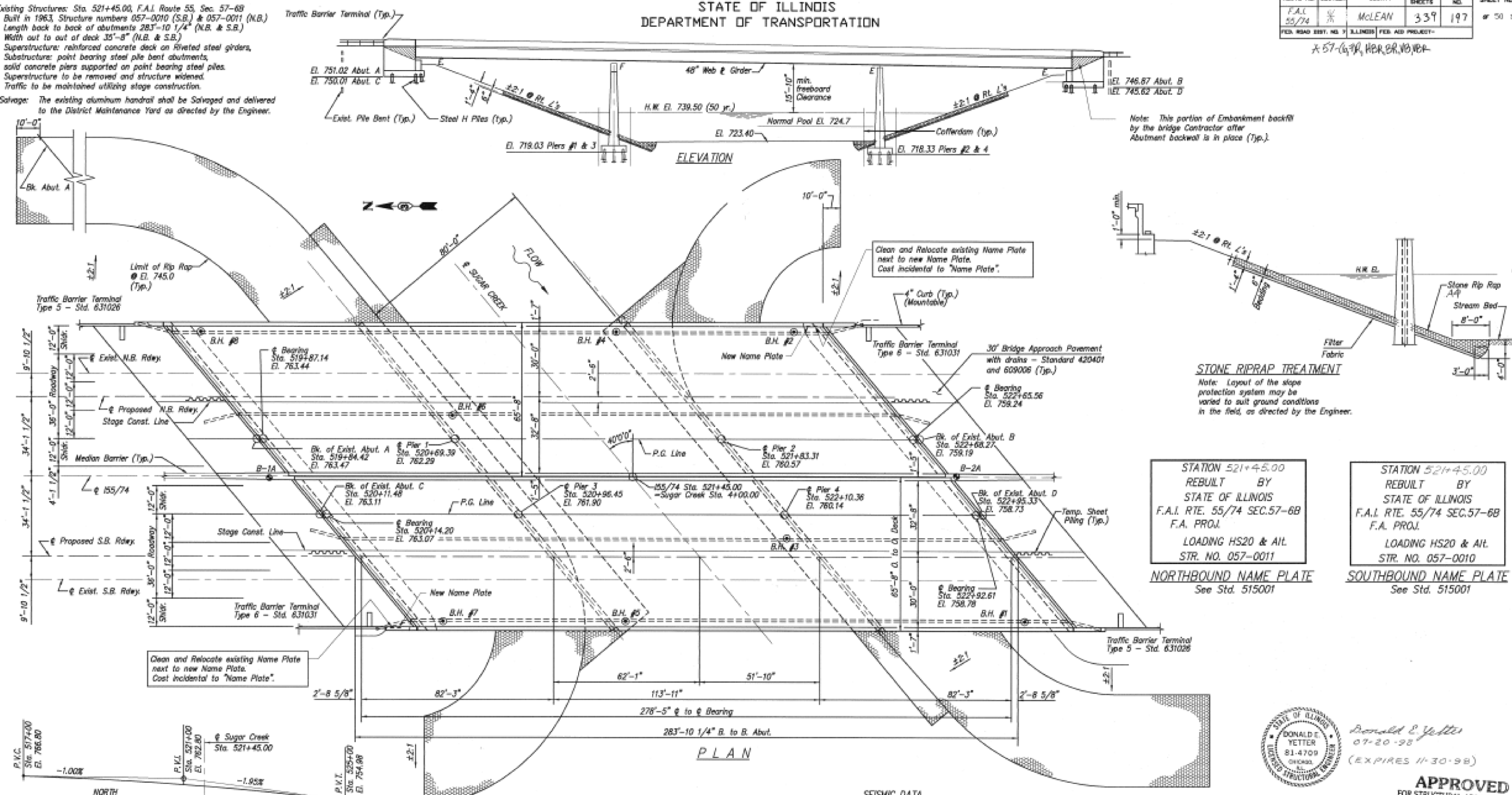
STATE OF ILLINOIS
DEPARTMENT OF TRANSPORTATION

ROUTE NO.	SECTION	COUNTY	TOTAL SHEETS	SHEET NO.
F.A.I. 55/74	57	McLEAN	339	197
FED. ROAD DIST. NO. 7		ILLINOIS FED. AID PROJECT-		

B.M. Sta. 521+27.45, 162.59' LL, RR spike in electric pole, Elev. 741.22

Existing Structures: Sta. 521+45.00, F.A.I. Route 55, Sec. 57-6B
Built in 1963, Structure numbers 057-0010 (S.B.) & 057-0011 (N.B.)
Length back to back of abutments 283'-10 1/4" (N.B. & S.B.)
Width out to out of deck 35'-8" (N.B. & S.B.)
Superstructure: reinforced concrete deck on riveted steel girders,
Substructure: point bearing steel pile bent abutments,
solid concrete piers supported on point bearing steel piles.
Superstructure to be removed and structure widened.
Traffic to be maintained utilizing stage construction.

Salvage: The existing aluminum handrail shall be salvaged and delivered to the District Maintenance Yard as directed by the Engineer.



STATION 521+45.00
REBUILT BY
STATE OF ILLINOIS
F.A.I. RTE. 55/74 SEC.57-6B
F.A. PROJ.
LOADING HS20 & AIL
STR. NO. 057-0011
NORTHBOUND NAME PLATE
See Std. 515001

STATION 521+45.00
REBUILT BY
STATE OF ILLINOIS
F.A.I. RTE. 55/74 SEC.57-6B
F.A. PROJ.
LOADING HS20 & AIL
STR. NO. 057-0010
SOUTHBOUND NAME PLATE
See Std. 515001



Ronald E. Yetter
07-20-98
(EXPIRES 11-30-98)

APPROVED
FOR STRUCTURAL ADEQUACY ONLY

Ralph C. Williams
ENGINEER OF BRIDGES AND STRUCTURES

GENERAL PLAN & ELEVATION
NORTHBOUND AND SOUTHBOUND
155/74 OVER SUGAR CREEK
F.A.I. RTE. 55 (155/74) SECTION 57-6B
STA. 521+45.00
McLEAN COUNTY
STRUCTURE NUMBER: 057-0010 (S.B.)
057-0011 (N.B.)

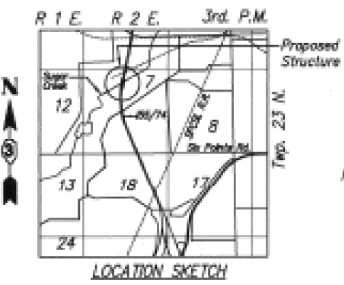
SEISMIC DATA
Seismic Performance Category (S.P.C.)= A
Acceleration Coefficient (A)= 0.045g
Site Coefficient (S)= 1.0

DESIGN SPECIFICATIONS
1992 AASHTO, 1993 and 1994 INTERMS.

LOADING HS 20-44 & ALTERNATE
Allow 25#/sq. ft. for future wearing surface.

DESIGN STRESSES
FIELD UNITS

f_c = 3,500 psi
f_y = 60,000 psi (Reinf.)
f_y = 50,000 psi (Struct.) (M270, Gr.50)
f_y = 38,000 psi (Struct.) (M270, Gr.36)



PROFILE GRADE 1-55/74
(AT MEDIAN EDGE OF PAVEMENT)

DESIGNED	DEM
CHECKED	NPP
DRAWN	SOI
CHECKED	NPP



WATERWAY INFORMATION

Flood Yr.	Freq.	C.F.S.	Opening	Sq. Ft.	Nat.	Head-FL	Headwater-EL
Design	50	1790	15.57	15.57	739.5	0	739.4
Base	100	8630	1551	1551	739.6	0	739.6
Overlapping							
Max. Calc.	500	10,700	1740	1740	741.0	0	741.0

STATE OF ILLINOIS
DEPARTMENT OF TRANSPORTATION

AS-BUILT PLANS 057-0010 & 057-0011
(INFORMATION ONLY)

USER NAME = sherejm	DESIGNED -	REVISED -
PLOT SCALE = 40.0000" / in.	DRAWN -	REVISED -
PLOT DATE = 1/9/2018	CHECKED -	REVISED -
	DATE -	REVISED -

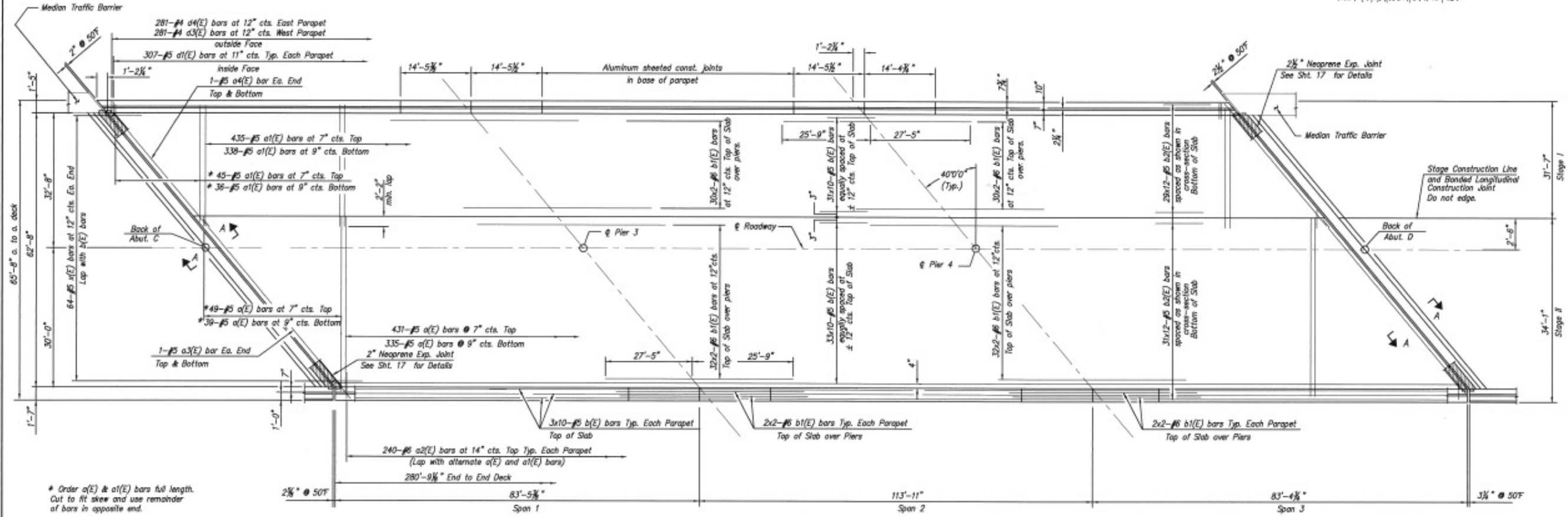
SCALE: NONE	SHEET 1	OF 6	SHEETS	STA.	TO STA.
-------------	---------	------	--------	------	---------

F.A.I. RTE.	SECTION	COUNTY	TOTAL SHEETS	SHEET NO.
55/74	(MBPM 2018)BJR	McLEAN	33	18
				CONTRACT NO. 70C99

MODEL: MOD057-0010.DWG
 FILE: \\dms01\share\engineering\projects\70C99\CADD\Drawings\Structures\057-0010-01-PlanRipras.dwg
 PROJECT: 70C99-01-PlanRipras.dwg
 OFFICE: DISTRICT 5
 DATE: 1/9/2018

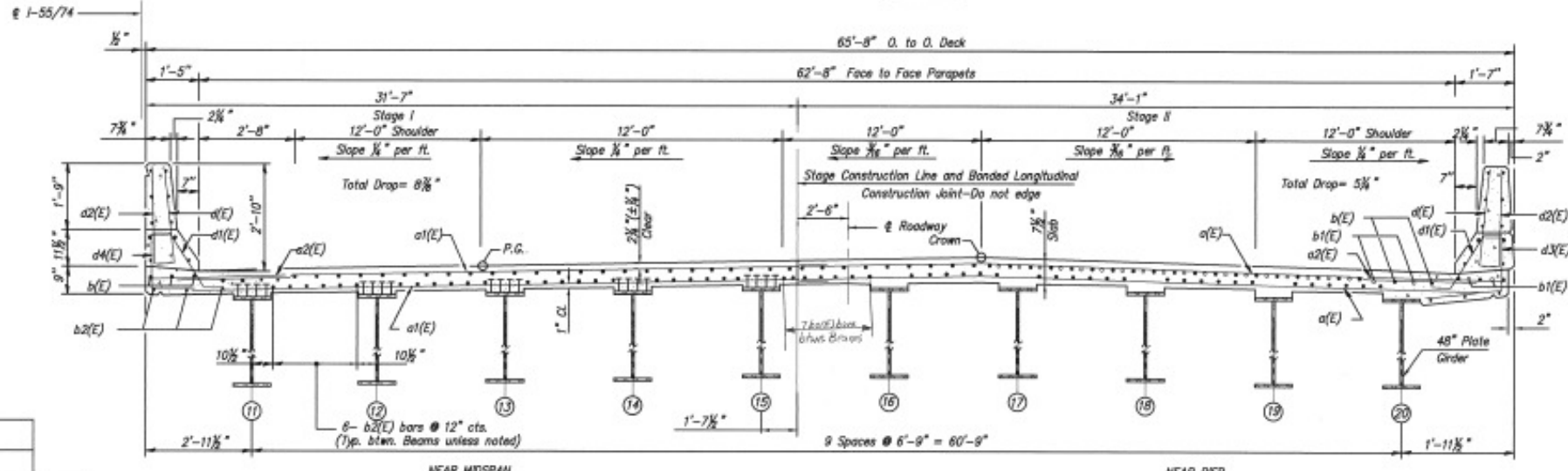
STATE OF ILLINOIS
DEPARTMENT OF TRANSPORTATION

ROUTE NO.	SECTION	COUNTY	TOTAL SHEETS	SHEET NO.	SHEET NO. 15
F.A.I. 55/74	McLEAN	339	211	OF 50 SHEETS	
FED. ROAD DIST. NO. 7 3 LANE 2 FEES. AID PROJECT					
#57-67R, HBR, BR, NB, VBR					



* Order a(E) & a1(E) bars full length. Cut to fit skew and use remainder of bars in opposite end.

PLAN



- Notes:
1. Reinforcement bars designated (E) shall be epoxy coated.
 2. Bars indicated thus 31 x 10-#5 etc. indicates 31 lines of bars with 10 lengths per line.
 3. See sheet 16 for superstructure details, and B11 of Material and parapet reinforcement.
 4. See sheet 16 for section A-A. Min. bar lap for #5 bar = 2'-2". Min. bar lap for #6 bar = 2'-7".

DECK REINFORCEMENT
SOUTHBOUND
155/74 OVER SUGAR CREEK
F.A.I. RTE. 55 (155/74) SECTION 57-6B
McLEAN COUNTY
Sta. 521+45.00
STRUCTURE NUMBER: 057-0010

DESIGNED	EAB
CHECKED	DEM
DRAWN	MBS
CHECKED	DEM



CROSS SECTION
(Looking South)

MODEL: MOD057-0010.DWG
 FILE: 057-0010.DWG
 PROJECT: 057-0010
 SHEET: 15
 DATE: 1/9/2018

USER NAME = sherejm	DESIGNED -	REVISED -
	DRAWN -	REVISED -
PLOT SCALE = 40.0000' / in.	CHECKED -	REVISED -
PLOT DATE = 1/9/2018	DATE -	REVISED -

STATE OF ILLINOIS
DEPARTMENT OF TRANSPORTATION

AS-BUILT PLANS 057-0010 & 057-0011
(INFORMATION ONLY)

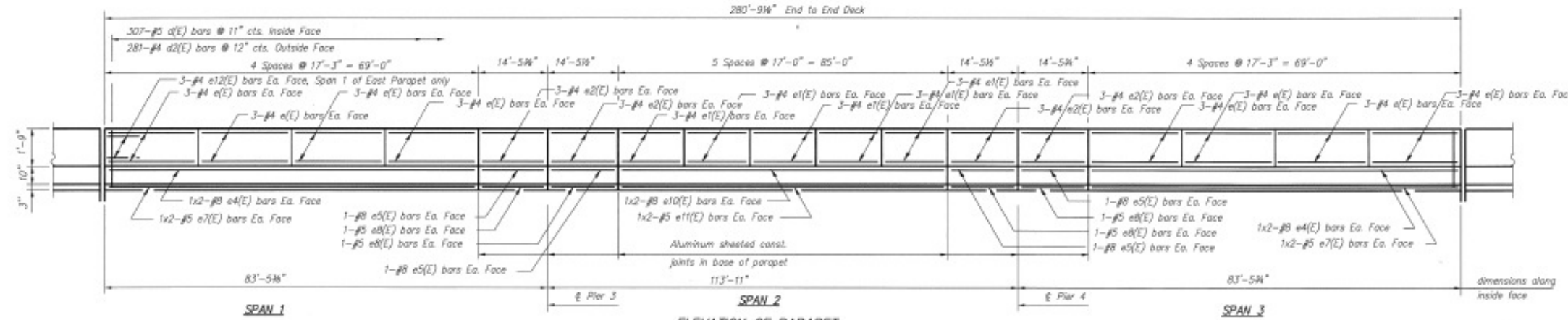
SCALE: NONE SHEET 4 OF 6 SHEETS STA. TO STA.

F.A.I. RTE.	SECTION	COUNTY	TOTAL SHEETS	SHEET NO.
55/74	(MBPM 2018)BR	McLEAN	33	21
CONTRACT NO. 70C99				
ILLINOIS FED. AID PROJECT				

STATE OF ILLINOIS
DEPARTMENT OF TRANSPORTATION

ROUTE NO.	SECTION	COUNTY	TOTAL SHEETS	SHEET NO.
F.A.I. 55/74	*	McLEAN	339	212
FED. ROAD DIST. NO. 7	ILLINOIS	FED. AID PROJECT-		

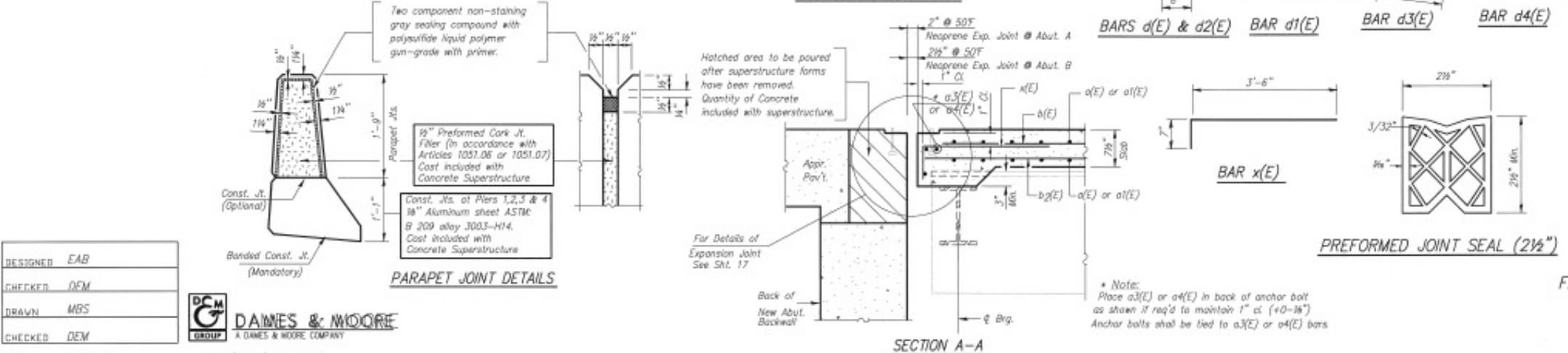
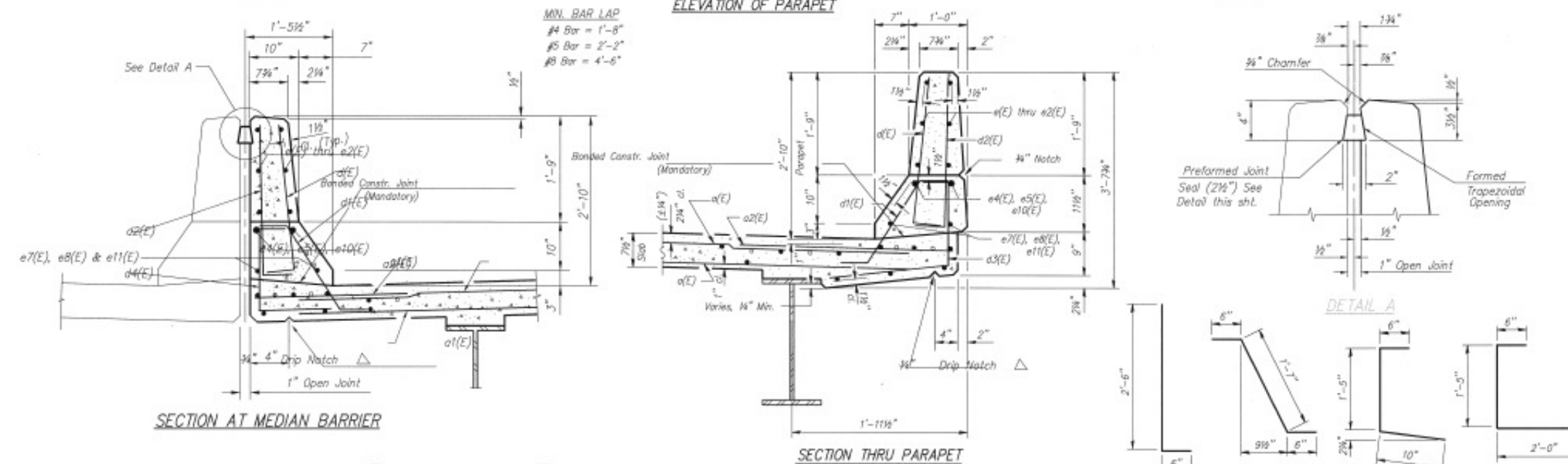
57-(6,7)R, H&R, BR, V&R



**SUPERSTRUCTURE
BILL OF MATERIAL**

Bar	No.	Size	Length	Shape
a(E)	854	#5	33'-1"	—
a1(E)	854	#5	32'-9"	—
a2(E)	488	#6	3'-7"	—
a3(E)	4	#5	42'-5"	—
a4(E)	4	#5	41'-6"	—
b(E)	799	#5	30'-3"	—
b1(E)	284	#6	27'-11"	—
b2(E)	720	#5	25'-7"	—
d(E)	614	#5	3'-0"	—
d1(E)	614	#5	2'-7"	—
d2(E)	562	#4	3'-0"	—
d3(E)	281	#4	2'-9"	—
d4(E)	281	#4	3'-11"	—
e(E)	95	#4	16'-11"	—
e1(E)	89	#4	16'-8"	—
e2(E)	48	#4	14'-1"	—
e4(E)	16	#8	37'-2"	—
e5(E)	16	#8	14'-1"	—
e7(E)	16	#5	38'-0"	—
e8(E)	16	#5	14'-1"	—
e10(E)	8	#8	44'-3"	—
e11(E)	8	#5	43'-6"	—
e12(E)	5	#4	2'-6"	—
x(E)	128	#5	4'-1"	—

REINFORCEMENT BARS	POUND	
EPLOY COATED		127086
CONCRETE SUPERSTRUCTURE	CU YD	522
PROTECTIVE COAT	SQ YD	2185
BRIDGE DECK GROOVING	SQ YD	1896
PREFORMED JOINT SEAL 2 1/2"	FOOT	281



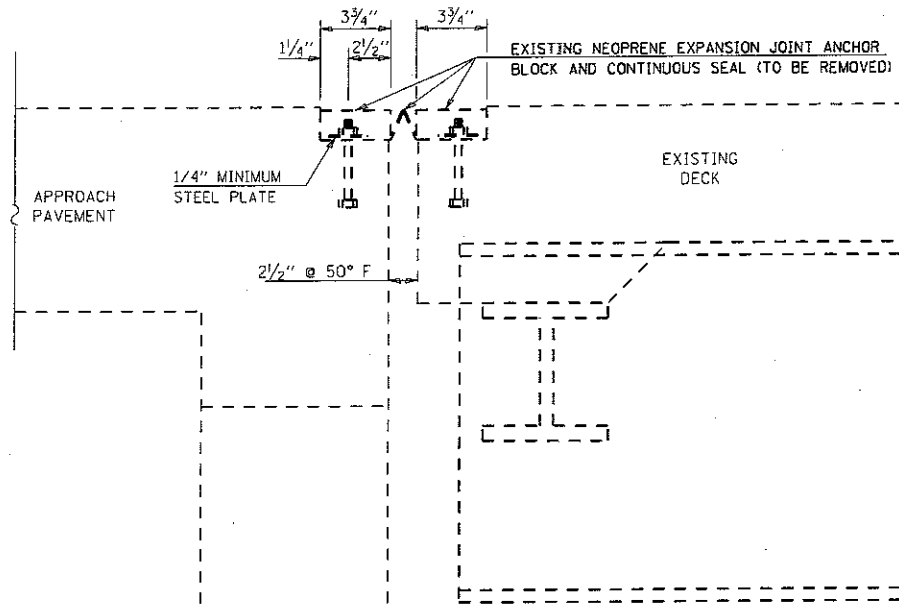
Notes:
 1. Reinforcement bars designated (E) shall be epoxy coated.
 2. Bars indicated thus 1 x 2-#5 etc. indicates 1 line of bar with 2 lengths per line.
 3. Neoprene joint seal shall be continuous - do not cut at staged construction joint.

**PARAPET DETAILS
SOUTHBOUND
155/74 OVER SUGAR CREEK
F.A.I. RTE. 55 (155/74) SECTION 57-6B
McLEAN COUNTY
Sta. 521+45.00
STRUCTURE NUMBER: 057-0010**

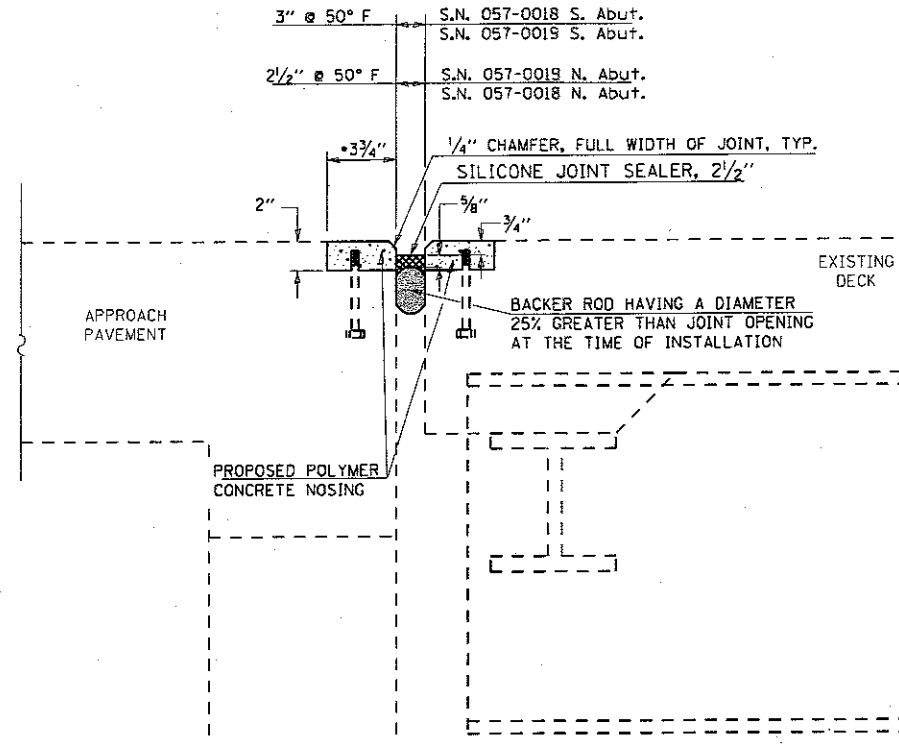
DESIGNED	EAB
CHECKED	DFM
DRAWN	MBS
CHECKED	DEM

612/sugar/parapet.dwg
DAMES & MOORE

MODEL: MODIFIED.MXD
 FILE NAME: P:\ILLINOIS\BIDDING\TECH\ibids\gov\p\DOT\Documents\DOT Office\ibids\57099\CADD\Structures\57099-6B-FinalRFR.mxd
 PROJECT: 57099-CADD\Structures\57099-6B-FinalRFR.mxd

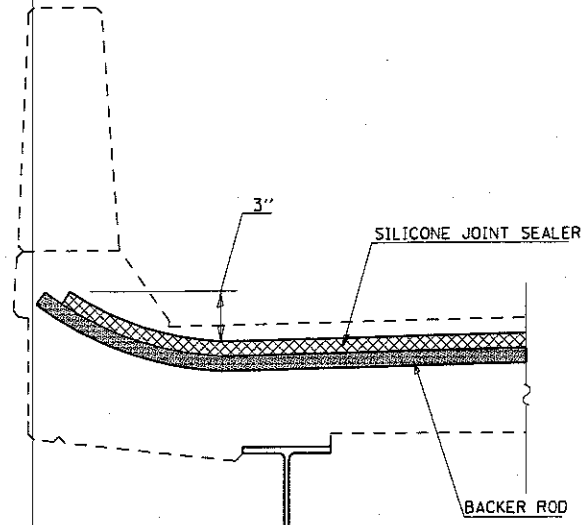


SECTION A-A AT JOINT (EXISTING)

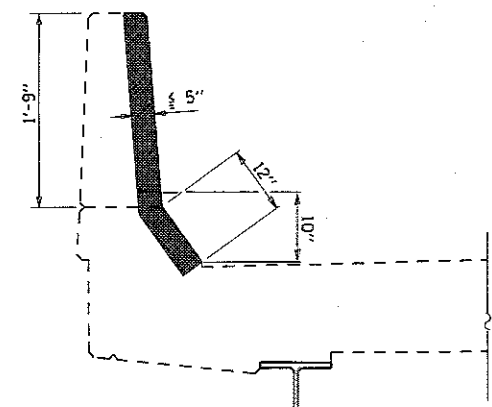


SECTION A-A AT JOINT (PROPOSED)

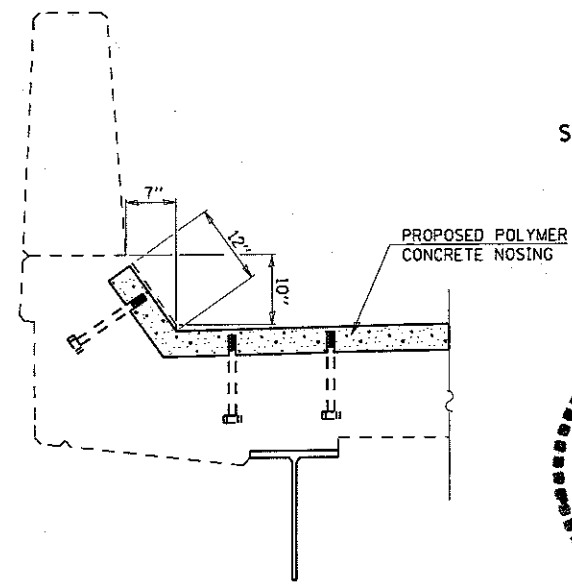
*1'-0" after Deck Slab Repair (Partial Depth) at existing hatch block S.N. 057-0019 N. Abut. & S. Abut.



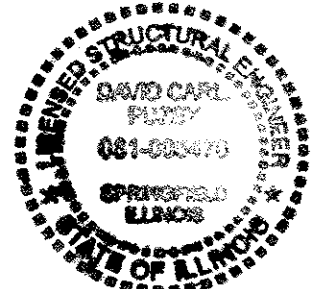
SECTION AT PARAPET SILICONE JOINT SEALER



SECTION B-B AT PARAPET STRUCTURAL CONCRETE REPAIR <= 5"



SECTION AT PARAPET POLYMER CONCRETE NOSING



David Carl Plutz
3/19/18
Expires 1/30/18

General Notes

Plan dimensions and details relative to existing plans are subject to nominal construction variations. The Contractor shall field verify existing dimensions and details affecting new construction and make necessary approved adjustments prior to construction or ordering of materials. Such variations shall not be cause for additional compensation for a change in scope of the work, however, the Contractor will be paid for the quantity actually furnished at the unit bid price for the work.

Existing reinforcement shall be cleaned and incorporated into the new construction. Cost included with Concrete Removal.

Removal of the existing Neoprene Expansion Joint shall be included with the cost of SILICONE JOINT SEALER and POLYMER CONCRETE.

Proposed Improvements

1. Remove existing Neoprene Expansion Joint
2. Perform Deck Slab Repair (Partial Depth)
3. Perform Structural Concrete Repair
4. Place Polymer Concrete Nosing
5. Place Backer Rod
6. Place Silicone Joint Sealer

BILL OF MATERIALS

Item	Unit	Total
Approach Slab Rep (Partial Depth)	Sq. Yd.	16.4
Deck Slab Repair (Partial Depth)	Sq. Yd.	197.8
Struct. Repair of Conc. <= 5"	Sq. Ft.	33.0
Silicone Joint Sealer, 2 1/2"	Foot	220.0
Silicone Joint Sealer, 3"	Foot	220.0
Polymer Concrete	Cu. Ft.	148.0

MODEL: T400R14M165 FILE NAME: P:\PROJECTS\2018\70C99\DOT\Office\Drawings\Struct\Drawings\70C99-11-Final\70C99.dwg

USER NAME = shere/pm	DESIGNED - TJB	REVISED -
PLOT SCALE = 40.0000' / in.	DRAWN -	REVISED -
PLOT DATE = 1/22/2018	CHECKED - JMS	REVISED -
	DATE -	REVISED -

STATE OF ILLINOIS
DEPARTMENT OF TRANSPORTATION

JOINT REPAIR DETAILS			
S.N. 057-0018 & S.N. 057-0019			
SCALE: NONE	SHEET 1	OF 2 SHEETS	STA. TO STA.

F.A.I. RTE. 55/74	SECTION (MBPM 2018)BIR	COUNTY MCLEAN	TOTAL SHEETS 33	SHEET NO. 24
ILLINOIS FED. AID PROJECT			CONTRACT NO. 70C99	

DATE	
BY	
FINAL SURVEY	SURVEYED
NOTE BOOK	PLOTTED
NO.	TEMPLATE
	AREAS CHECKED
	AREAS CHECKED

DATE	
BY	
ORIGINAL SURVEY	SURVEYED
NOTE BOOK	PLOTTED
NO.	TEMPLATE
	AREAS CHECKED
	AREAS CHECKED

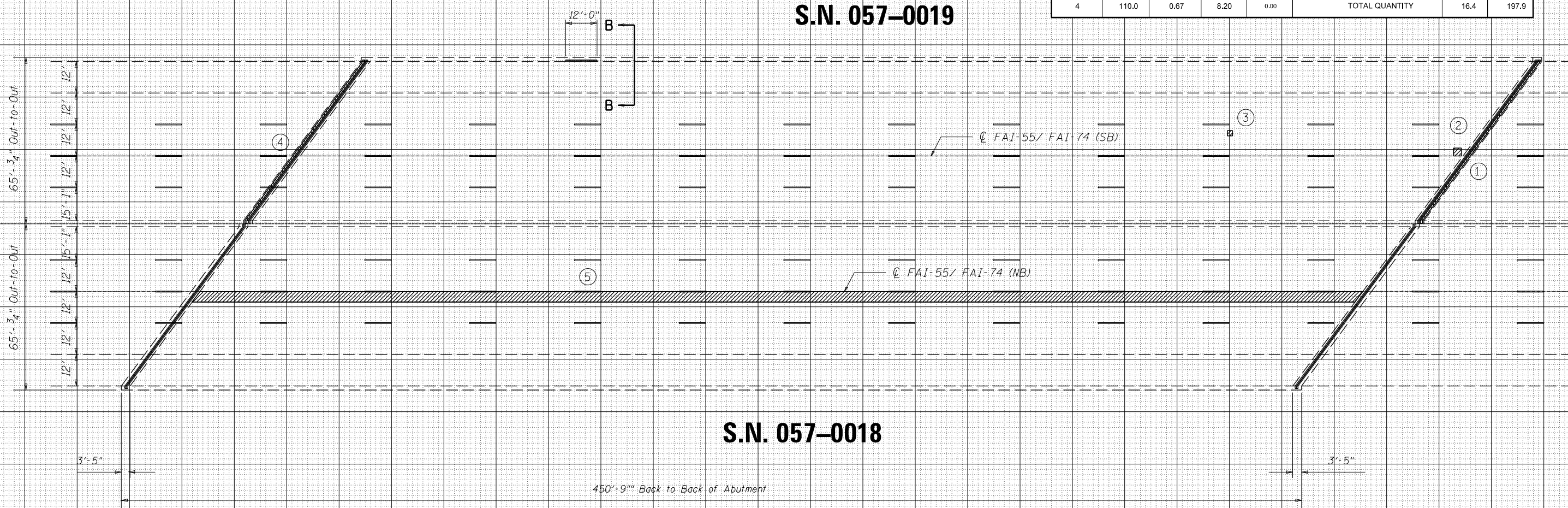
MODEL: SH06E1MAME5
 FILE NAME: pwwllghbndntec Illinois.gov\PIWDOT\Documents\DOT Offices\District 3\Projects\0570-99-CAD\Drawings\Structures\0570C99-sis-FinalPlans.dgn



PATCH NO.	SIZE		APPR SLAB REPAIR	DECK SLAB REPAIR	PATCH NO.	SIZE		APPR SLAB REPAIR	DECK SLAB REPAIR
	LENGTH (FT)	WIDTH (FT)	(PARTIAL DEPTH) SQ YD	(PARTIAL DEPTH) SQ YD		LENGTH (FT)	WIDTH (FT)	(PARTIAL DEPTH) SQ YD	(PARTIAL DEPTH) SQ YD
1	110.0	0.67	8.20	0.00	5	442.0	4.0	0.00	196.44
2	3.0	3.0	0.00	1.00					
3	2.0	2.0	0.00	0.44					
4	110.0	0.67	8.20	0.00	TOTAL QUANTITY		16.4	197.9	

S.N. 057-0019

S.N. 057-0018



AREA OF DECK SLAB REPAIR HAVE BEEN ESTIMATED FROM JULY, 2017 DECK SURVEY. THE ACTUAL QUANTITY AND LOCATIONS SHALL BE DETERMINED BY ENGINEER. THE ENGINEER SHALL SHOW THE ACTUAL LOCATIONS OF THE DECK REPAIRS ON DECK PATCHING DETAIL SHEETS.

USER NAME = shererjm	DESIGNED -	REVISED -
PLOT SCALE = 40.0000 ' / in.	DRAWN -	REVISED -
PLOT DATE = 1/9/2018	CHECKED -	REVISED -
	DATE -	REVISED -

STATE OF ILLINOIS
 DEPARTMENT OF TRANSPORTATION

DETAIL OF PARTIAL DEPTH PATCHING
 S.N. 057-0018 & 057-0019

SCALE: 1" = 20' SHEET 2 OF 2 SHEETS STA. TO STA.

F.A.I. RTE.	SECTION	COUNTY	TOTAL SHEETS	SHEET NO.
55/74	(MBPM 2018)BJR	MCLEAN	33	25
ILLINOIS FED. AID PROJECT			CONTRACT NO. 70C99	

PLAN NOTES:

ALL STAGING DETAILS SHALL BE IN ACCORDANCE WITH TRAFFIC CONTROL (SPECIAL) AND PAID FOR AT THE CONTRACT UNIT PRICE PER EACH LOCATION.

FOR ADDITIONAL DETAILS ASSOCIATED WITH TRAFFIC CONTROL (SPECIAL) SEE HIGHWAY STANDARDS 701400, 701400, 701401 & 701406 701428 & 701446.

EXISTING OR TEMPORARY PAVEMENT MARKINGS SHALL BE ON BOTH SIDES OF THE OPEN LANES. PAVEMENT MARKINGS THAT CONFLICT WITH STAGED TRAFFIC MARKINGS SHALL BE COVERED WITH BLACK OUT TAPE. THIS WORK SHALL BE INCLUDED IN THE COST FOR TRAFFIC CONTROL AND PROTECTION (SPECIAL).

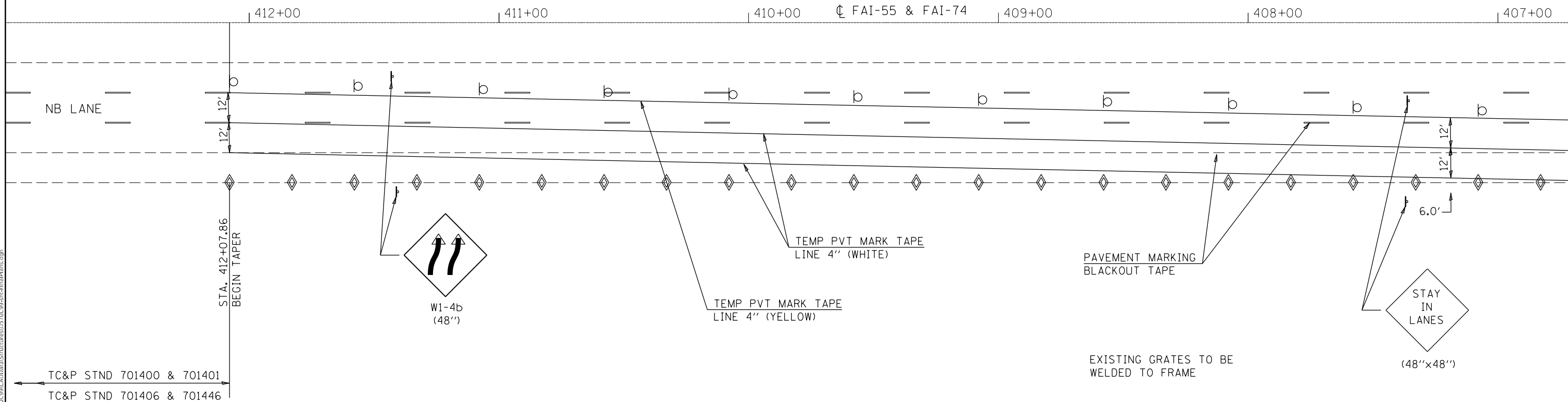
REFLECTORS SHALL BE ATTACHED TO GUARDRAIL AND BARRIER WALL AT 25 FOOT CENTERS. COST INCLUDED WITH TRAFFIC CONTROL AND PROTECTION STANDARD (SPECIAL).

"LANE SHIFT" AND "STAY IN LANES" SIGNS SHALL BE SUPPLIED AND ERECTED BY THE CONTRACTOR. COST INCLUDED WITH TRAFFIC CONTROL AND PROTECTION (SPECIAL).

PRIOR TO ROUTING TRAFFIC ONTO SHOULDERS, THE CONTRACTOR SHALL SECURE ANY GRATES ON SHOULDER INLETS AS DIRECTED BY ENGINEER. THIS WORK SHALL BE PAID FOR ACCORDING TO ARTICLE 109.04 OF THE STANDARD SPECIFICATIONS.

○ TYPE II BARRICADES OR DRUMS WITH MONO-DIRECTIONAL STEADY BURNING LIGHTS AT 50' CTS. (COST INCLUDED WITH TC&P (SPL))

◇ TYPE B OR C MONODIRECTIONAL REFLECTORS AT 25' CTS. (COST INCLUDED WITH TC&P (SPL))



*TEMPORARY PAVEMENT MARKING TAPE - LINE 4"

DESCRIPTION	STATION	TO	STATION	YELLOW	WHITE
				FOOT	FOOT
LT EDGE LINE	395+77.14	TO	412+07.86	1590.0	
CENTER LINE	395+77.14	TO	412+07.86		1590.0
RT EDGE LINE	395+77.14	TO	412+07.86		1590.0
TOTAL =				1590.0	3180.0
USE =				1590.0	3180.0

*PAVEMENT MARKING BLACKOUT TAPE

DESCRIPTION	STATION	TO	STATION	FOOT
SKIP DASH	395+77.14	TO	412+07.86	1630.50
EDGE LINE	395+77.14	TO	412+07.86	1630.50
TOTAL =				3261.0
USE =				3261.0

*WORKZONE PAVEMENT MARKING REMOVAL

DESCRIPTION	STATION	TO	STATION	FOOT	SQ FT
SKIP DASH	395+77.14	TO	412+07.86	1630.50	815.3
EDGE LINE	395+77.14	TO	412+07.86	1630.50	815.3
TOTAL =				3261.0	1630.6
USE =				3261.0	1631.0

*COST INCLUDED WITH TRAFFIC CONTROL AND PROTECTION (SPECIAL)

STATE OF ILLINOIS
DEPARTMENT OF TRANSPORTATION

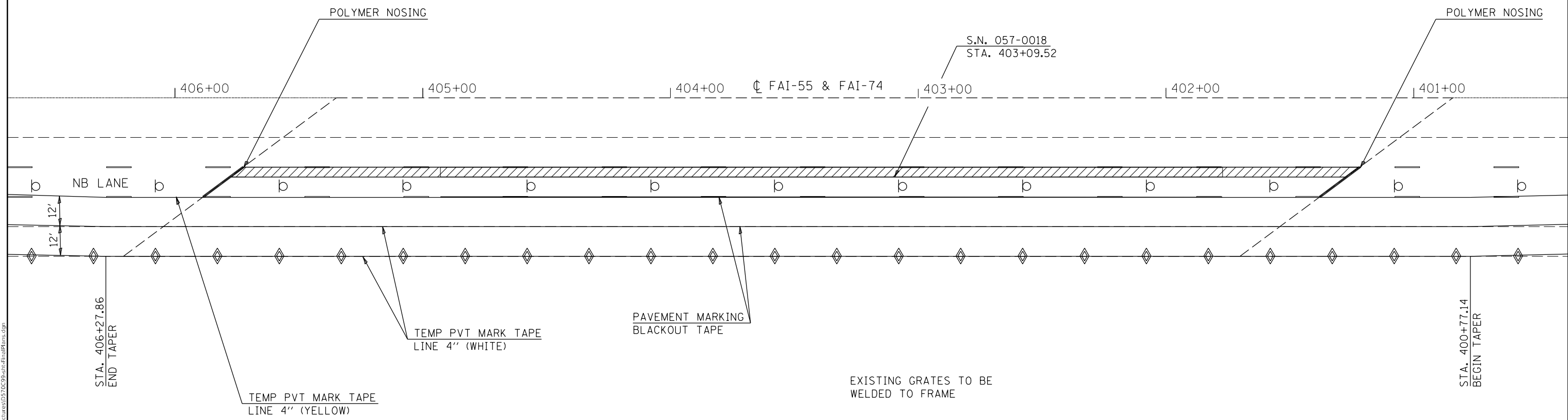
DETAIL OF TRAFFIC CONTROL (SPECIAL)
S.N. 057-0018

F.A.I. RTE.	SECTION	COUNTY	TOTAL SHEETS	SHEET NO.
55/74	(MBPM2018)BJR	MCLEAN	33	26
CONTRACT NO. 70C99			ILLINOIS FED. AID PROJECT	

SCALE: NONE SHEET 1 OF 3 SHEETS STA. TO STA.

MODEL: \\MODELS\MAME...
 FILE: \\MAME...
 PROJECT: \\PROJECTS\570C99\CADD\DATA\STRUCTURES\570C99-411-FinalPlan.dwg
 USER: shererjm
 PLOT SCALE: = 40.0000 ' / in.
 PLOT DATE: = 1/9/2018

- TYPE II BARRICADES OR DRUMS WITH MONO-DIRECTIONAL STEADY BURNING LIGHTS AT 50' CTS. (COST INCLUDED WITH TC&P (SPL))
- ◇ TYPE B OR C MONODIRECTIONAL REFLECTORS AT 25' CTS. (COST INCLUDED WITH TC&P (SPL))



DECK SLAB REPAIR (PARTIAL DEPTH)

MODEL: \\MODELS\MAME...
 FILE NAME: P:\ILLINOIS\ENR\NITEC\Illinois.gov-PWD\DOT\Documents\DOT - Offices\District 5\Projects\570C99\CADD\Structures\570C99-eh-FinalRfms.dgn

USER NAME = shererjm	DESIGNED -	REVISED -
	DRAWN -	REVISED -
PLOT SCALE = 40.0000' / in.	CHECKED -	REVISED -
PLOT DATE = 1/9/2018	DATE -	REVISED -

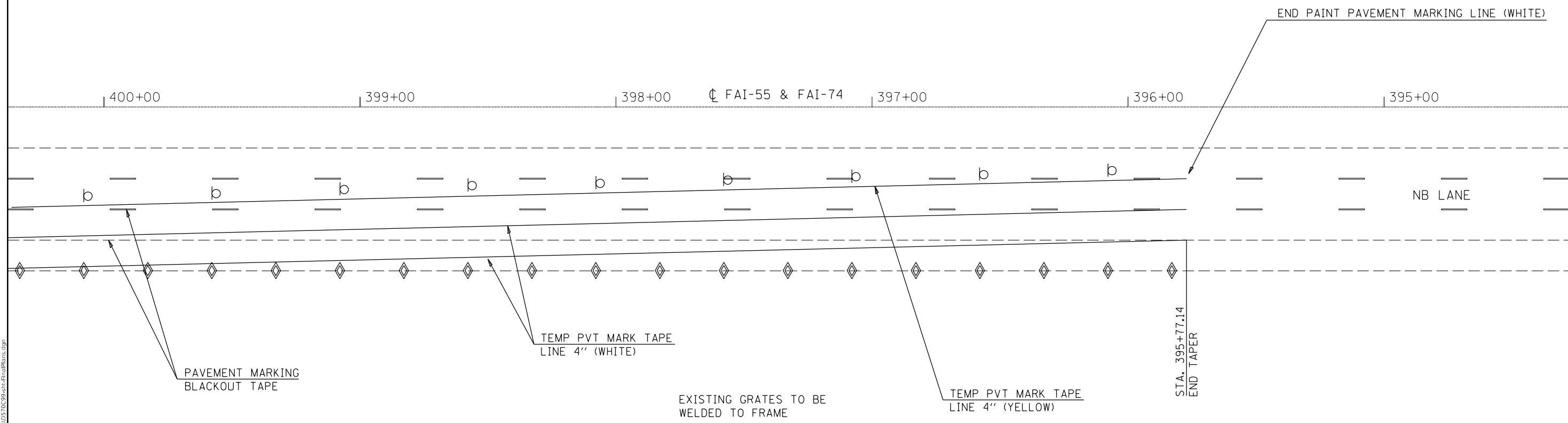
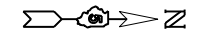
**STATE OF ILLINOIS
DEPARTMENT OF TRANSPORTATION**

**DETAIL OF TRAFFIC CONTROL (SPECIAL)
S.N. 057-0018**

SCALE: NONE SHEET 2 OF 3 SHEETS STA. TO STA.

F.A.I. RTE.	SECTION	COUNTY	TOTAL SHEETS	SHEET NO.
55/74	(MBPM2018)BJR	MCLEAN	33	27
CONTRACT NO. 70C99				
ILLINOIS FED. AID PROJECT				

- ⊕ TYPE II BARRICADES OR DRUMS WITH MONO-DIRECTIONAL STEADY BURNING LIGHTS AT 50' CTS. (COST INCLUDED WITH TC&P (SPL))
- ◇ TYPE B OR C MONODIRECTIONAL REFLECTORS AT 25' CTS. (COST INCLUDED WITH TC&P (SPL))



MODEL: \\MODELMATE...
 FILE NAME: ...

USER NAME = shererjm	DESIGNED -	REVISED -
	DRAWN -	REVISED -
PLOT SCALE = 40.0000' / in.	CHECKED -	REVISED -
PLOT DATE = 1/9/2018	DATE -	REVISED -

STATE OF ILLINOIS
DEPARTMENT OF TRANSPORTATION

DETAIL OF TRAFFIC CONTROL (SPECIAL)
S.N. 057-0018

SCALE: NONE SHEET 3 OF 3 SHEETS STA. TO STA.

F.A.I. RTE.	SECTION	COUNTY	TOTAL SHEETS	SHEET NO.
55/74	(MBPM2018)BJR	MCLEAN	33	28
CONTRACT NO. 70C99				
ILLINOIS FED. AID PROJECT				

BENCH MARKS:

T.B.M. No. 6: Chiseled to cut on Southeast wingwall of F.A.I. 55/74 Northbound bridge over White Oak Rd. & N.S. Railroad - El. 248.217

T.B.M. No. 7: Brass plate at F.A.I. 55/74 @ median, Sta. 31+437.046 - El. 247.098

EXISTING STRUCTURE:

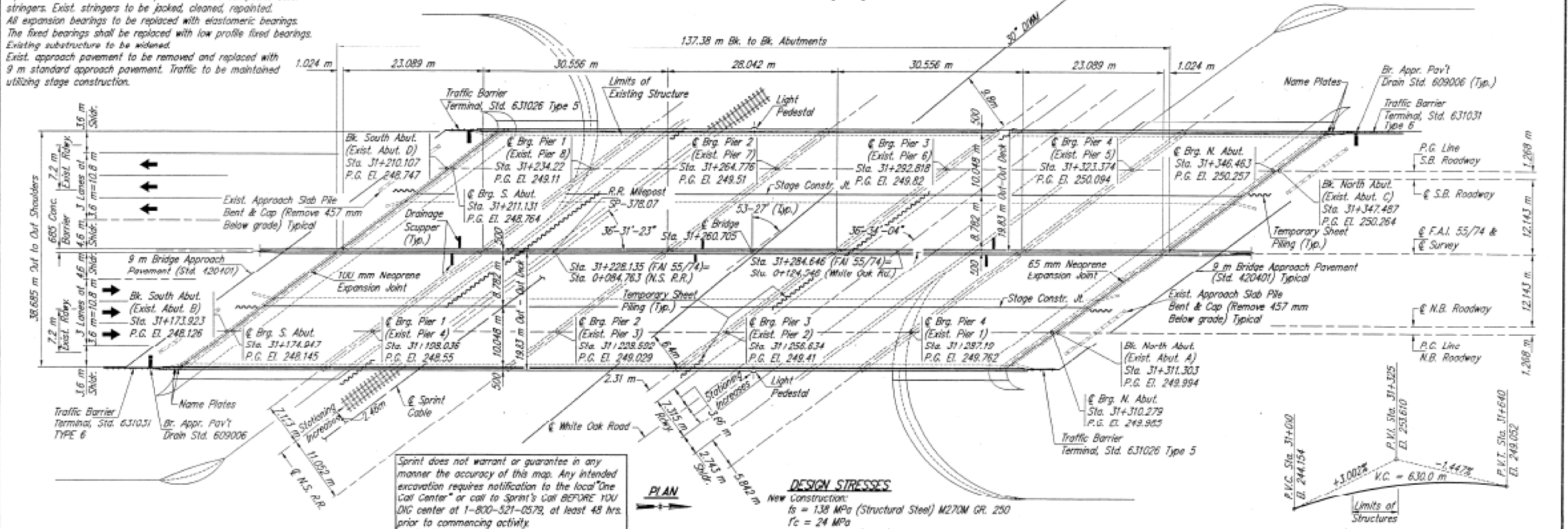
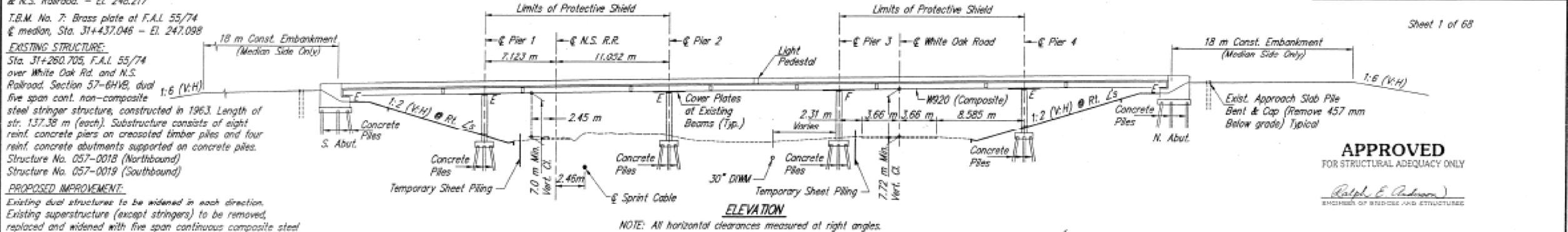
Sta. 31+260.705, F.A.I. 55/74 over White Oak Rd. and N.S. Railroad, Section 57-6HVB, dual five span cont. non-composite steel stringer structure, constructed in 1963. Length of str. 137.38 m (each). Substructure consists of eight reinf. concrete piers on creosoted timber piles and four reinf. concrete abutments supported on concrete piles. Structure No. 057-0018 (Northbound) Structure No. 057-0019 (Southbound)

PROPOSED IMPROVEMENT:

Existing dual structures to be widened in each direction. Existing superstructure (except stringers) to be removed, replaced and widened with five span continuous composite steel stringers. Exist. stringers to be jacked, cleaned, repainted. All expansion bearings to be replaced with elastomeric bearings. The fixed bearings shall be replaced with low profile fixed bearings. Existing substructure to be widened. Exist. approach pavement to be removed and replaced with 9 m standard approach pavement. Traffic to be maintained utilizing stage construction.

ROUTE NO.	SECTION	COUNTY	TOTAL SHEETS	SHEET NO.
55/74	(57-6HVB)BY	McLean	173	61
FED. ROAD DIST. NO. 7		ILLINOIS	PROJECT	

Sheet 1 of 68



STATION 258+996.196 REBUILT 199... BY STATE OF ILLINOIS F.A.I. RT. 55/74 SEC. (57-6HVB)BY F.A. PROJ. LOADING MS18 & ALT. STR. NO. 057-0018

* B-Northbound, S-Southbound
Locate Nameplate on Southeast Wingwall of N.B. Structure & on Northwest Wingwall of S.B. Structure (See Std. 515001)

LETTERING FOR NAMEPLATE

TOP OF RAIL ELEV.

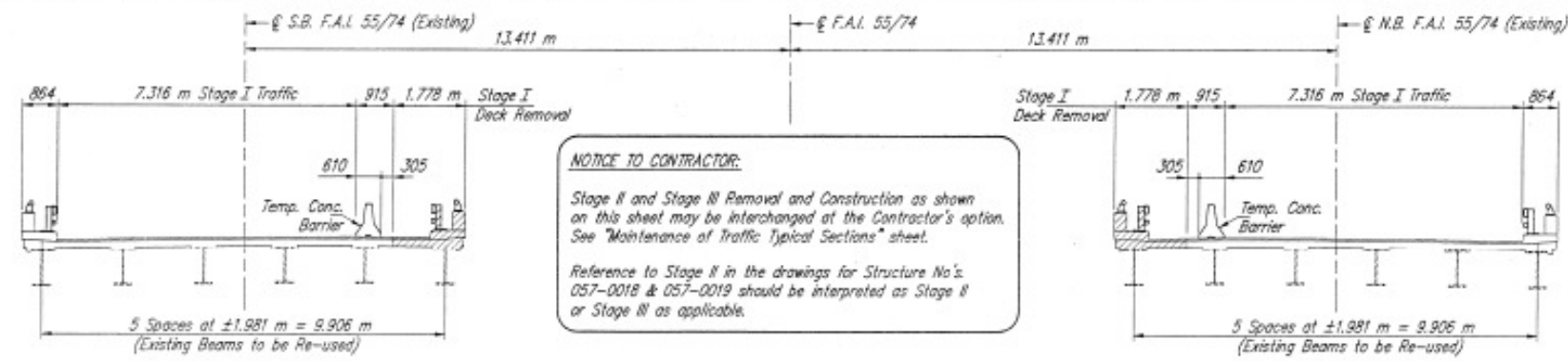
STATION	NORTH BOUND
0+040	240.129
0+050	240.177
0+060	240.22
0+070	240.273
0+080	240.313
0+090	240.356
0+100	240.402
0+110	240.446
0+120	240.488
0+130	240.528

WHITE OAK ROAD - EXISTING PROFILE GRADE

Sta	El.	Sta	El.	Sta	El.	Sta	El.	Sta	El.
0+080	240.129	0+140	240.273	0+200	240.402	0+260	240.528	0+320	240.648
0+090	240.177	0+150	240.313	0+210	240.446	0+270	240.574	0+330	240.697
0+100	240.22	0+160	240.356	0+220	240.488	0+280	240.602	0+340	240.716
0+110	240.273	0+170	240.398	0+230	240.528	0+290	240.626	0+350	240.829
0+120	240.313	0+180	240.438	0+240	240.568	0+300	240.650	0+360	240.942
0+130	240.356	0+190	240.478	0+250	240.608	0+310	240.674	0+370	241.055
0+140	240.398	0+200	240.518	0+260	240.648	0+320	240.698	0+380	241.168
0+150	240.438	0+210	240.558	0+270	240.688	0+330	240.722	0+390	241.281
0+160	240.478	0+220	240.598	0+280	240.728	0+340	240.746	0+400	241.394
0+170	240.518	0+230	240.638	0+290	240.768	0+350	240.770	0+410	241.507
0+180	240.558	0+240	240.678	0+300	240.808	0+360	240.794	0+420	241.620
0+190	240.598	0+250	240.718	0+310	240.848	0+370	240.818	0+430	241.733
0+200	240.638	0+260	240.758	0+320	240.888	0+380	240.842	0+440	241.846
0+210	240.678	0+270	240.798	0+330	240.928	0+390	240.866	0+450	241.959
0+220	240.718	0+280	240.838	0+340	240.968	0+400	240.890	0+460	242.072
0+230	240.758	0+290	240.878	0+350	241.008	0+410	240.914	0+470	242.185
0+240	240.798	0+300	240.918	0+360	241.048	0+420	240.938	0+480	242.298
0+250	240.838	0+310	240.958	0+370	241.088	0+430	240.962	0+490	242.411
0+260	240.878	0+320	240.998	0+380	241.128	0+440	240.986	0+500	242.524
0+270	240.918	0+330	241.038	0+390	241.168	0+450	241.010	0+510	242.637
0+280	240.958	0+340	241.078	0+400	241.208	0+460	241.034	0+520	242.750
0+290	240.998	0+350	241.118	0+410	241.248	0+470	241.058	0+530	242.863
0+300	241.038	0+360	241.158	0+420	241.288	0+480	241.082	0+540	242.976
0+310	241.078	0+370	241.198	0+430	241.328	0+490	241.106	0+550	243.089
0+320	241.118	0+380	241.238	0+440	241.368	0+500	241.130	0+560	243.202
0+330	241.158	0+390	241.278	0+450	241.408	0+510	241.154	0+570	243.315
0+340	241.198	0+400	241.318	0+460	241.448	0+520	241.178	0+580	243.428
0+350	241.238	0+410	241.358	0+470	241.488	0+530	241.202	0+590	243.541
0+360	241.278	0+420	241.398	0+480	241.528	0+540	241.226	0+600	243.654
0+370	241.318	0+430	241.438	0+490	241.568	0+550	241.250	0+610	243.767
0+380	241.358	0+440	241.478	0+500	241.608	0+560	241.274	0+620	243.880
0+390	241.398	0+450	241.518	0+510	241.648	0+570	241.298	0+630	243.993
0+400	241.438	0+460	241.558	0+520	241.688	0+580	241.322	0+640	244.106
0+410	241.478	0+470	241.598	0+530	241.728	0+590	241.346	0+650	244.219
0+420	241.518	0+480	241.638	0+540	241.768	0+600	241.370	0+660	244.332
0+430	241.558	0+490	241.678	0+550	241.808	0+610	241.394	0+670	244.445
0+440	241.598	0+500	241.718	0+560	241.848	0+620	241.418	0+680	244.558
0+450	241.638	0+510	241.758	0+570	241.888	0+630	241.442	0+690	244.671
0+460	241.678	0+520	241.798	0+580	241.928	0+640	241.466	0+700	244.784
0+470	241.718	0+530	241.838	0+590	241.968	0+650	241.490	0+710	244.897
0+480	241.758	0+540	241.878	0+600	242.008	0+660	241.514	0+720	245.010
0+490	241.798	0+550	241.918	0+610	242.048	0+670	241.538	0+730	245.123
0+500	241.838	0+560	241.958	0+620	242.088	0+680	241.562	0+740	245.236
0+510	241.878	0+570	241.998	0+630	242.128	0+690	241.586	0+750	245.349
0+520	241.918	0+580	242.038	0+640	242.168	0+700	241.610	0+760	245.462
0+530	241.958	0+590	242.078	0+650	242.208	0+710	241.634	0+770	245.575
0+540	241.998	0+600	242.118	0+660	242.248	0+720	241.658	0+780	245.688
0+550	242.038	0+610	242.158	0+670	242.288	0+730	241.682	0+790	245.801
0+560	242.078	0+620	242.198	0+680	242.328	0+740	241.706	0+800	245.914
0+570	242.118	0+630	242.238	0+690	242.368	0+750	241.730	0+810	246.027
0+580	242.158	0+640	242.278	0+700	242.408	0+760	241.754	0+820	246.140
0+590	242.198	0+650	242.318	0+710	242.448	0+770	241.778	0+830	246.253
0+600	242.238	0+660	242.358	0+720	242.488	0+780	241.802	0+840	246.366
0+610	242.278	0+670	242.398	0+730	242.528	0+790	241.826	0+850	246.479
0+620	242.318	0+680	242.438	0+740	242.568	0+800	241.850	0+860	246.592
0+630	242.358	0+690	242.478	0+750	242.608	0+810	241.874	0+870	246.705
0+640	242.398	0+700	242.518	0+760	242.648	0+820	241.898	0+880	246.818
0+650	242.438	0+710	242.558	0+770	242.688	0+830	241.922	0+890	246.931
0+660	242.478	0+720	242.598	0+780	242.728	0+840	241.946	0+900	247.044
0+670	242.518	0+730	242.638	0+790	242.768	0+850	241.970	0+910	247.157
0+680	242.558	0+740	242.678	0+800	242.808	0+860	241.994	0+920	247.270
0+690	242.598	0+750	242.718	0+810	242.848	0+870	242.018	0+930	247.383
0+700	242.638	0+760	242.758	0+820	242.888	0+880	242.042	0+940	247.496
0+710	242.678	0+770	242.798	0+830	242.928	0+890	242.066	0+950	247.609
0+720	242.718	0+780	242.838	0+840	242.968	0+900	242.090	0+960	247.722
0+730	242.758	0+790	242.878	0+850	243.008	0+910	242.114	0+970	247.835
0+740	242.798	0+800	242.918	0+860	243.048	0+920	242.138	0+980	247.948
0+750	242.838	0+810	242.958	0+870	243.088	0+930	242.162	0+990	248.061
0+760	242.878	0+820	242.998	0+880	243.128	0+940	242.186	0+1000	248.174
0+770	242.918	0+830	243.038	0+890	243.168	0+950	242.210	0+1010	248.287
0+780	242.958	0+840	243.078	0+900	243.208	0+960	242.234	0+1020	248.400
0+790	242.998	0+850	243.118	0+910	243.248	0+970	242.258	0+1030	248.513
0+800	243.038	0+860	243.158	0+920	243.288	0+980	242.282	0+1040	248.626
0+810	243.078	0+870	243.198	0+930	243.328	0+990	242.306	0+1050	248.739
0+820	243.118	0+880	243.238	0+940	243.368	0+1000	242.330	0+1060	248.852
0+830	243.158	0+890	243.278	0+950	243.408	0+1010	242.354	0+1070	248.965
0+840	243.198	0+900	243.318	0+960	243.448	0+1020	242.378	0+1080	249.078
0+850	243.238	0+910	243.358	0+970	243.488	0+1030	242.402	0+1090	249.191
0+860	243.278	0+920	243.398	0+980	243.528	0+1040	242.426	0+1100	249.304
0+870	243.318	0+930	243.438	0+990	243.568	0+1050	242.450	0+1110	249.417
0+880	243.358	0+940	243.478	0+1000	243.608	0+1060	242.474	0+1120	249.530
0+890	243.398	0+950	243.518	0+1010	243.648	0+1070	242.498	0+1130	249.643
0+900	243.438	0+960	243.558	0+1020	243.688	0+1080	242.522	0+1140	249.756
0+910	243.478	0+970	243.598	0+1030	243.728	0+1090	242.546	0+1150	249.869
0+920	243.518	0+980	243.638	0+1040	243.768	0+1100	242.570	0+1160	249.982
0+930	243.558	0+990	243.678	0+1050	243.808	0+1110	242.594	0+1170	250.095
0+940	243.598	0+1000	243.718	0+1060	243.848	0+1120	242.618	0+1180	250.208
0+950	243.638	0+1010	243.758	0+1070	243.888	0+11			

ROUTE NO.	SECTION	COUNTY	TOTAL SHEETS	SHEET NO.
1-55/74	(57-6HVB)BY	McLean	173	CA
FED. ROAD DIST. NO. 7		ILLINOIS	PROJECT	

Sheet 4 of 68



NOTICE TO CONTRACTOR:
 Stage II and Stage III Removal and Construction as shown on this sheet may be interchanged at the Contractor's option. See "Maintenance of Traffic Typical Sections" sheet.
 Reference to Stage II in the drawings for Structure No's. 057-0018 & 057-0019 should be interpreted as Stage II or Stage III as applicable.

STAGE CONSTRUCTION

See "MAINTENANCE OF TRAFFIC TYPICAL SECTIONS" sheet for additional information.

STAGE I

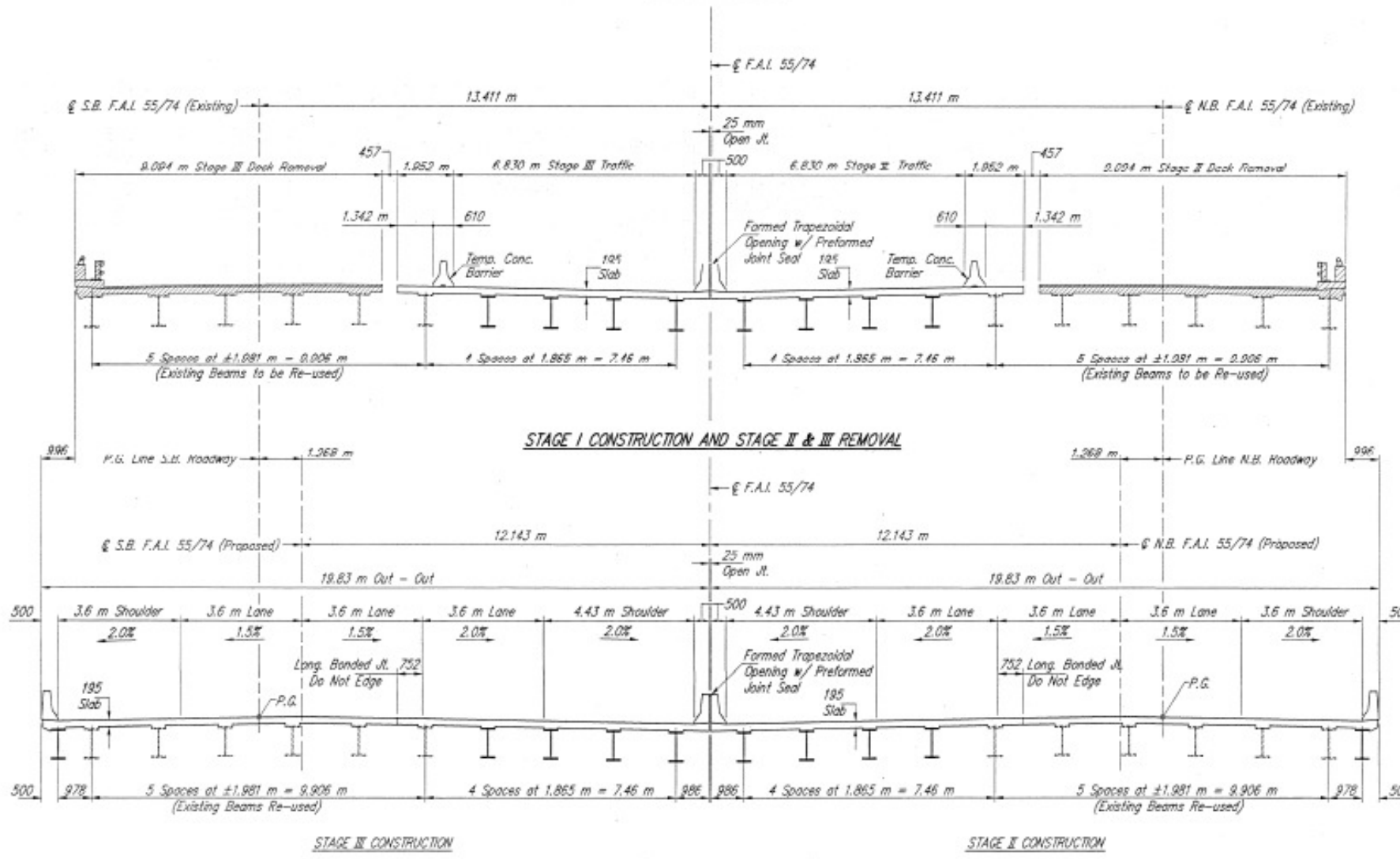
Place temporary concrete barriers and maintain two lanes of traffic on outside portion of bridge.
 Provide traffic control and protection and protective shielding for White Oak Road and N.S. Railroad.
 Remove median portion of existing bridge deck.
 Disconnect diaphragms from existing beam on median side of bridge.
 Jack and Crib existing beam on median side of bridge.
 Remove portions of existing substructure.
 Construct median extensions of piers and abutments.
 Erect and construct new median portions of superstructure.

STAGE II

Fasten grates of inlets on bridge approach pavement slabs constructed in Stage I.
 Relocate temporary concrete barrier onto new portion of deck constructed in Stage I and maintain two lanes of traffic.
 Remove remainder of existing bridge deck.
 Move or remove existing outside beam as required to drive piles in outside extension of pier. Cost of moving or removing existing outside beam is included with the cost of "Driving Concrete Piles".
 Jack and Crib remaining existing beams.
 Remove portions of existing substructure.
 Construct outside extensions of piers and abutments.
 Erect and construct remainder of new superstructure.

Quantity of Temporary Concrete Barrier is included with the Roadway Plans.

Hatched areas indicate removal of existing concrete deck.



STAGE I CONSTRUCTION AND STAGE II & III REMOVAL

STAGE III CONSTRUCTION

STAGE II CONSTRUCTION

FINAL DECK CROSS SECTION
(All Views Looking North)

CONSTRUCTION STAGING
 F.A.I. 55/74 OVER N.S. R.R. & WHITE OAK ROAD
 SECTION (57-6HVB)BY
 STRUCTURE NO. 057-0018 (N.B.) & 057-0019 (S.B.)
 McLEAN COUNTY
 STATION 31+260.705

HANSON ENGINEERS INCORPORATED
 1525 SOUTH SIXTH STREET SPRINGFIELD, IL 62763

DATE: 4/17/28
 SHEET NO.: 945206.3

USER NAME = sherejin	DESIGNED -	REVISED -
	DRAWN -	REVISED -
PLOT SCALE = 40.0000' / in.	CHECKED -	REVISED -
PLOT DATE = 1/9/2018	DATE -	REVISED -

STATE OF ILLINOIS
 DEPARTMENT OF TRANSPORTATION

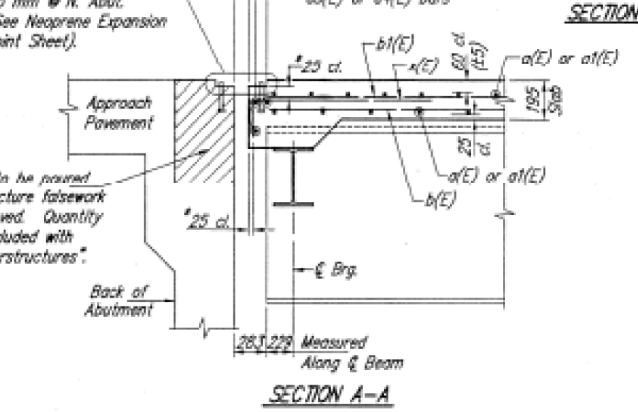
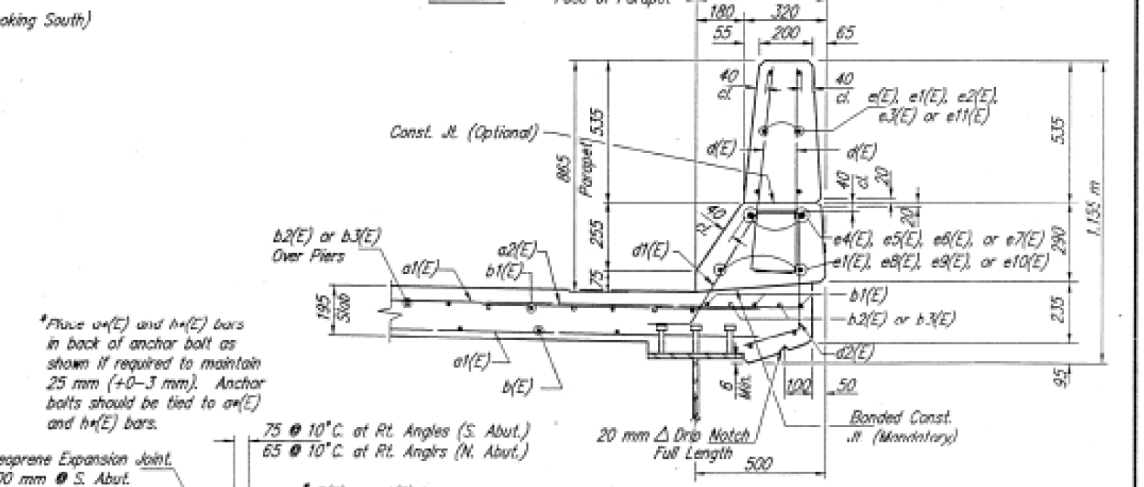
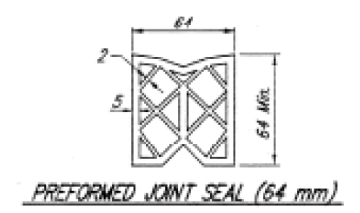
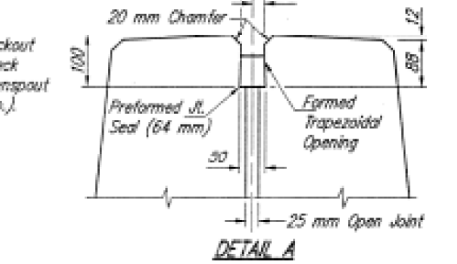
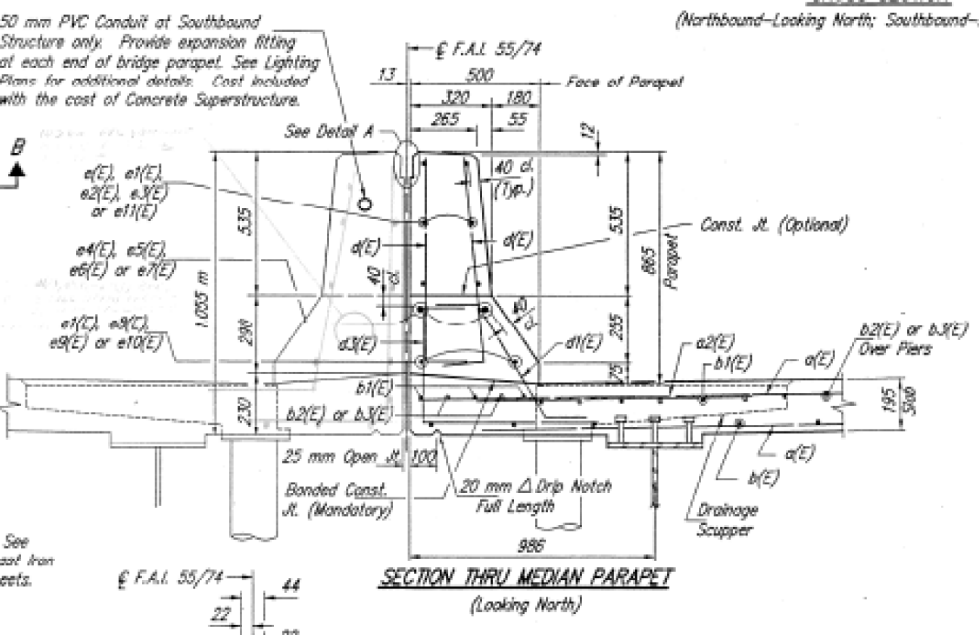
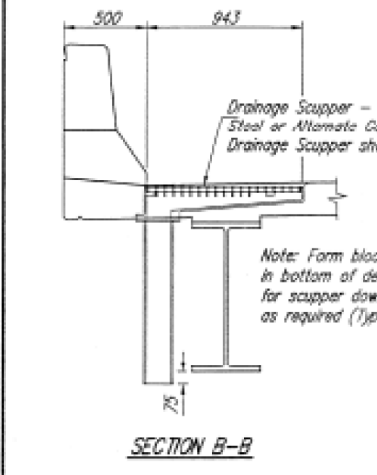
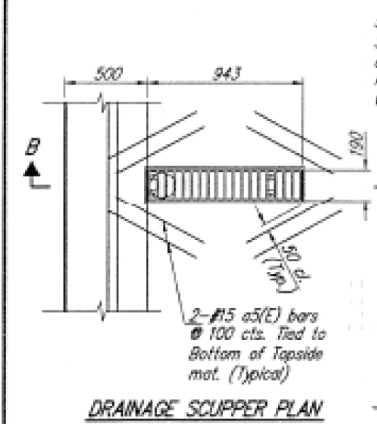
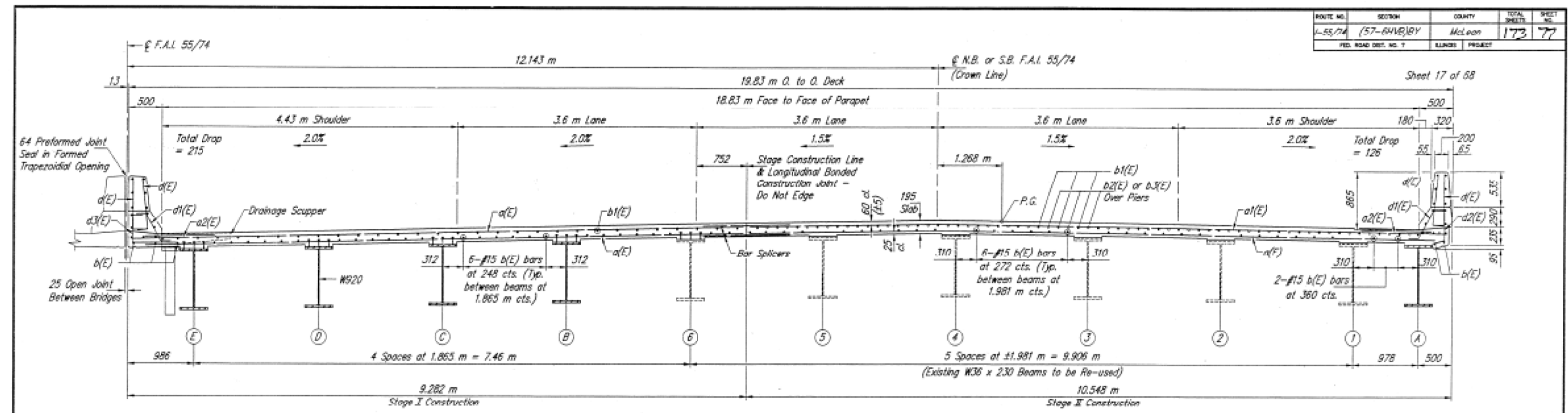
AS-BUILT PLANS 057-0018 & 057-0019
 (INFORMATION ONLY)

SCALE: NONE SHEET 2 OF 4 SHEETS STA. TO STA.

F.A.I. RTE.	SECTION	COUNTY	TOTAL SHEETS	SHEET NO.
55/74	(MBPM 2018)BJR	MCLEAN	33	30
				CONTRACT NO. 70C99
		ILLINOIS	FED. AID PROJECT	

MODEL: MODIFIED.MXITS
 FILE NAME: P:\ILLINOIS\BIDDING\TEC\Illinois.gov\PIV\DOT\Documents\DOT Office\District 9\Projects\0570019\CADD\Structures\0570019-Sub-Plan\Bids.dwg
 11/17/2017 10:15:15 (CONVERTED) P:\ILLINOIS\BIDDING\TEC\Illinois.gov\PIV\DOT\Documents\DOT Office\District 9\Projects\0570019\CADD\Structures\0570019-Sub-Plan\Bids.dwg

ROUTE NO.	SECTION	COUNTY	TOTAL SHEETS	SHEET NO.
1-55/74	(57-6HVB)BY	McLean	173	77
FED. ROAD DIST. NO. 7		BLINDS	PROJECT	



SUPERSTRUCTURE DETAILS
 F.A.I. 55/74 OVER N.S. R.R. & WHITE OAK ROAD
 SECTION (57-6HVB)BY
 STRUCTURE NO. 057-0018 (N.B.) & 057-0019 (S.B.)
 McLEAN COUNTY
 STATION 31+260.705

HANSON ENGINEERS
 INCORPORATED
 1525 SOUTH SIXTH STREET SPRINGFIELD, IL 62703

SHEET NO. 945206.3
 DATE 4/17/98

MODEL: MODIFIED.MXD
 FILE NAME: P:\ILLINOIS\BID\70C99\DRAWING\70C99.DWG
 PROJECT: 057-0018 (N.B.) & 057-0019 (S.B.)
 SHEET: 77 OF 173

USER NAME = sherejm	DESIGNED -	REVISED -
PLOT SCALE = 40.0000 "/in.	DRAWN -	REVISED -
PLOT DATE = 1/9/2018	CHECKED -	REVISED -
	DATE -	REVISED -

STATE OF ILLINOIS
 DEPARTMENT OF TRANSPORTATION

AS-BUILT PLANS 057-0018 & 057-0019	
(INFORMATION ONLY)	
SCALE: NONE	SHEET 3 OF 4 SHEETS
STA.	TO STA.

F.A.I. RTE.	SECTION	COUNTY	TOTAL SHEETS	SHEET NO.
55/74	(MBPM 2018)BJR	MCLEAN	33	31
CONTRACT NO. 70C99			ILLINOIS FED. AID PROJECT	

Joint Size	"C" at 10°C	"D" at 10°C	"F" at 10°C
50	50	40 Min.	84
65	65	45 Min.	109
100	75	65 Min.	126

ROUTE NO.	SECTION	COUNTY	TOTAL SHEETS	SHEET NO.
I-55/74	(57-6HVB)BY	McLean	173	81
FED. ROAD DIST. NO. 7		ILLINOIS	PROJECT	

Sheet 21 of 68

GENERAL NOTES

Continuous Seal Neoprene Expansion Joint shall consist of molded anchor blocks of elastomer and steel, field assembled over continuous lengths of elastomeric membrane.

The elastomeric membrane shall be pre-molded with a single or a double upward convolution that will have a "memory" to return to its molded position upon joint closure.

The convolution length shall be such that the extended length will not be greater than the manufactured length when the joint is fully expanded in its design range and will not protrude above the anchor blocks when the joint is fully compressed.

Joint openings shall be adjusted according to Article 503.10(c) of the Standard Specifications when the deck is poured at an ambient temperature other than 10° C.

The parapet and roadway membrane shall be made continuous by an approved vulcanizing process. Lapping will not be permitted.

All dimensions are in millimeters (mm) except as noted.

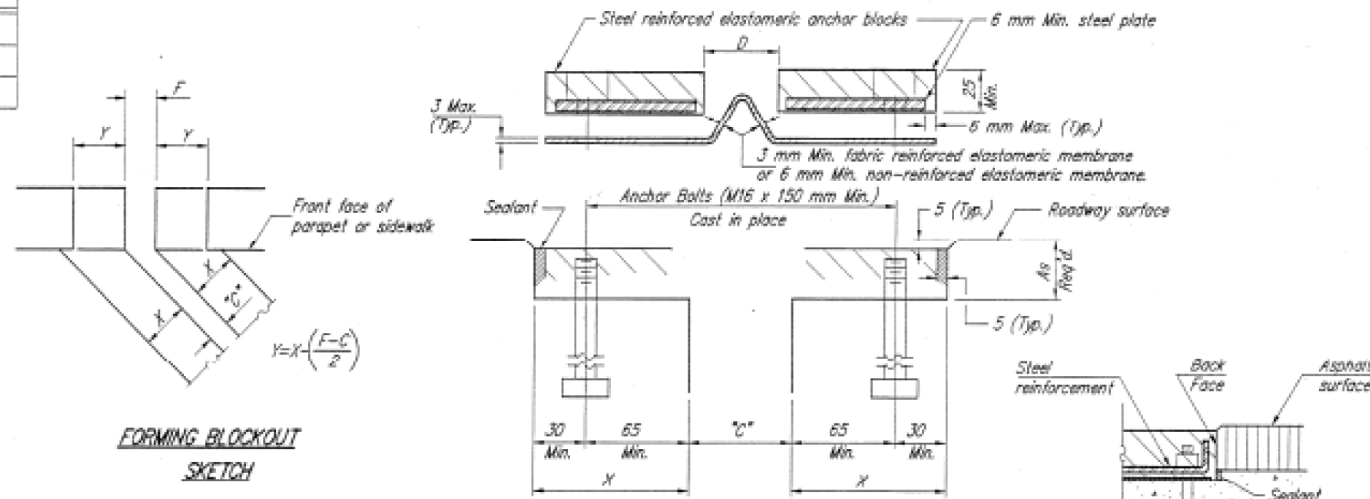
INSTALLATION NOTES

1. Install continuous seal in roadway, parapet, curb, and sidewalk.
2. Install anchor blocks as indicated.

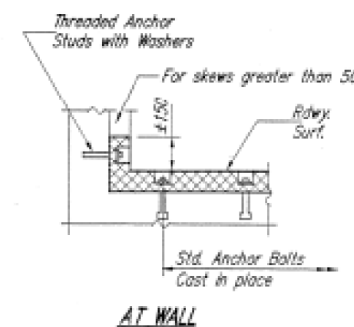
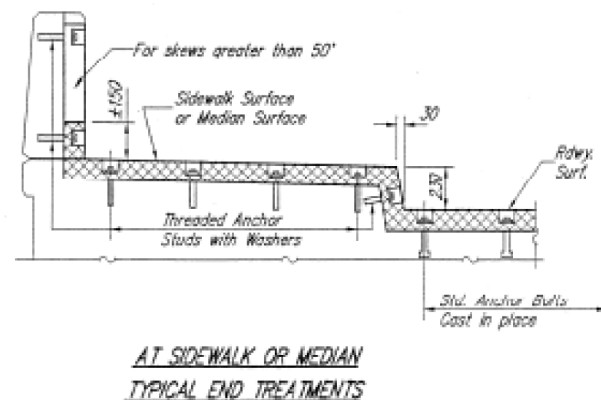
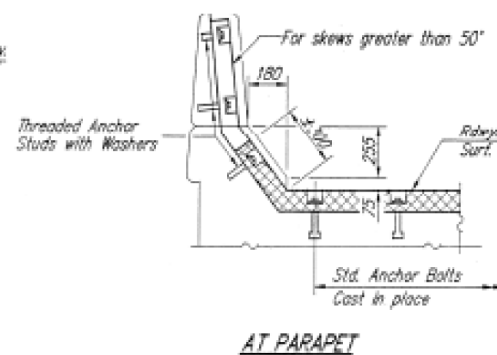
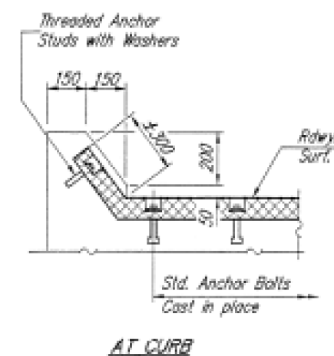
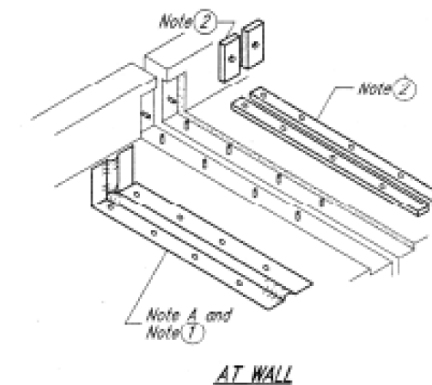
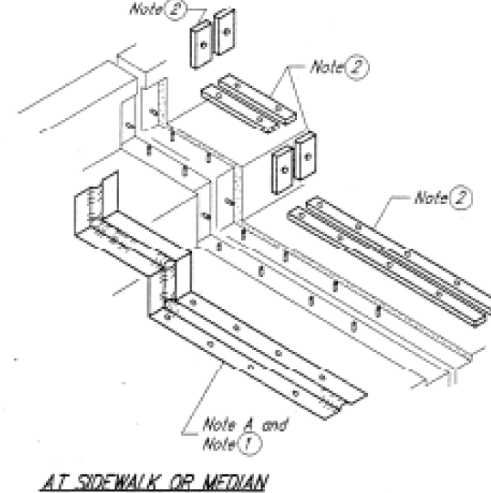
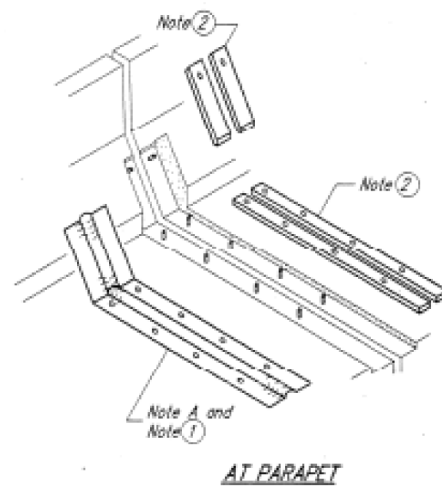
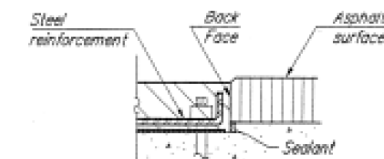
NOTE A: Maximum spacing of anchor bolts shall be 300 centers.

SKREW LIMITATIONS

The details of the anchor blocks and the elastomeric membrane in the parapet, as shown, are for up to 50° skews. For skews greater than 50°, the anchor blocks and the elastomeric membrane, installed according to dimension "D", might require modifications to insure a minimum clearance of 40 mm from centerline of anchor studs to edge of parapet opening. The anchor blocks and the elastomeric membrane shall also be installed to the top of the parapet with the anchor studs spaced at ±300 cts.



ANCHOR BLOCK REINFORCEMENT WITH ASPHALT SURFACE



NEOPRENE EXPANSION JOINTS
 F.A.I. 55/74 OVER N.S. R.R. & WHITE OAK ROAD
 SECTION (57-6HVB)BY
 STRUCTURE NO. 057-0018 (N.B.) & 057-0019 (S.B.)
 McLEAN COUNTY
 STATION 31+260.705

DATE: 4/17/98
 1525 SOUTH SEETH STREET, SPRINGFIELD, IL 62783

MODEL: MODIFIED.MMTS
 FILE NAME: P:\ILLINOIS\BIDDING\TEC\ibids\gov\PIV\DOT\Documents\DOT Office\District 5\Projects\0570C99\CADD\Bids\Structure\0570C99-81-Final\Bids.dwg
 PROJECT: 0570C99\CADD\Bids\Structure\0570C99-81-Final\Bids.dwg

USER NAME = sherejm	DESIGNED -	REVISED -
	DRAWN -	REVISED -
PLOT SCALE = 40.0000 "/in.	CHECKED -	REVISED -
PLOT DATE = 1/9/2018	DATE -	REVISED -

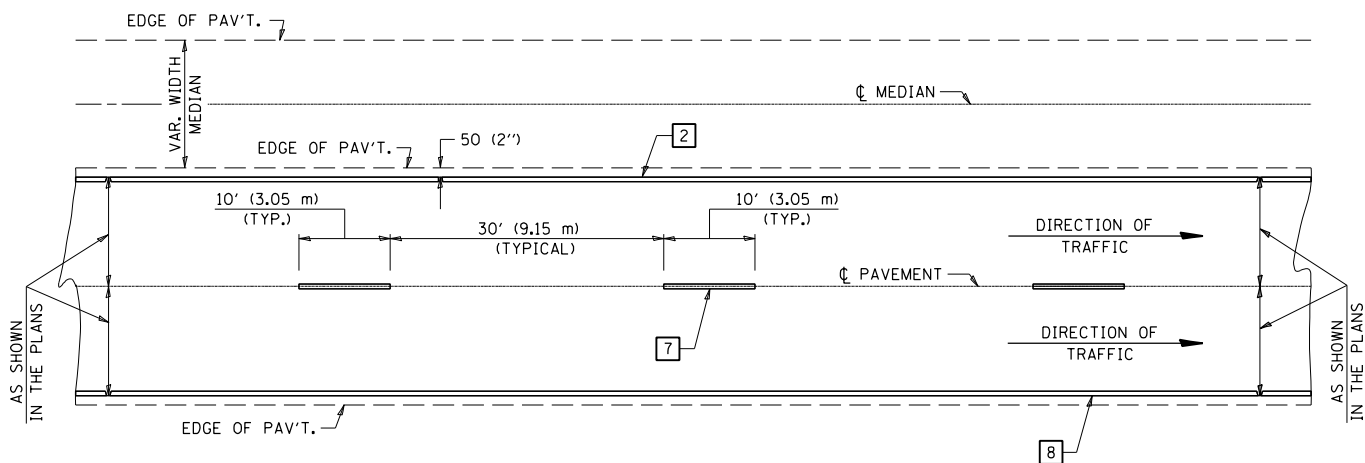
STATE OF ILLINOIS
 DEPARTMENT OF TRANSPORTATION

AS-BUILT PLANS 057-0018 & 057-0019
 (INFORMATION ONLY)

SCALE: NONE SHEET 4 OF 4 SHEETS STA. TO STA.

F.A.I. RTE.	SECTION	COUNTY	TOTAL SHEETS	SHEET NO.
55/74	(MBPM 2018)BJR	MCLEAN	33	32
				CONTRACT NO. 70C99
ILLINOIS FED. AID PROJECT				

CENTERLINE INTERSTATE OR MULTI-LANE TWO WAY DIVIDED HIGHWAY

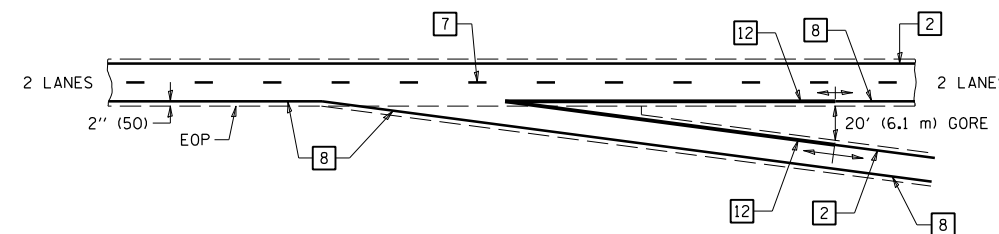


NOTE: PAVEMENT MARKINGS ARE TO BE EXTENDED THROUGH OMISSIONS WHEN APPLICABLE.

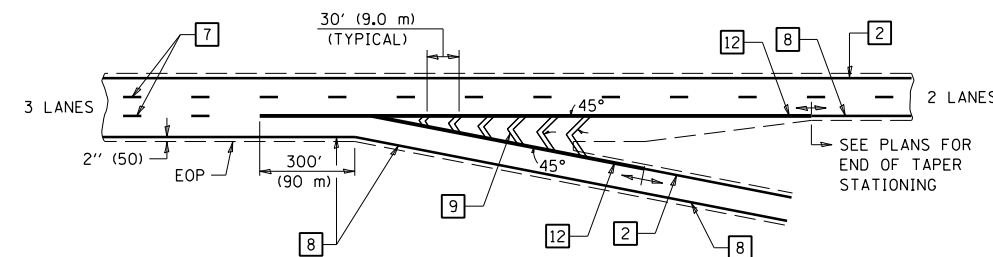
NOTE: SEE ARTICLES 780.04 & 781.03 FOR LOCATION OF STRIPES AND MARKERS RELATIVE TO EDGES OR JOINTS.

FOR RAISED REFLECTIVE PAVEMENT MARKERS, REFER TO STANDARD 781001.

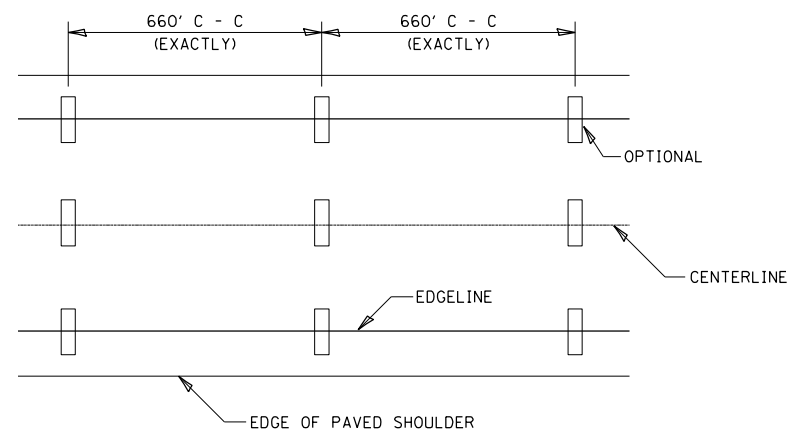
TYPICAL EXIT RAMP TERMINAL



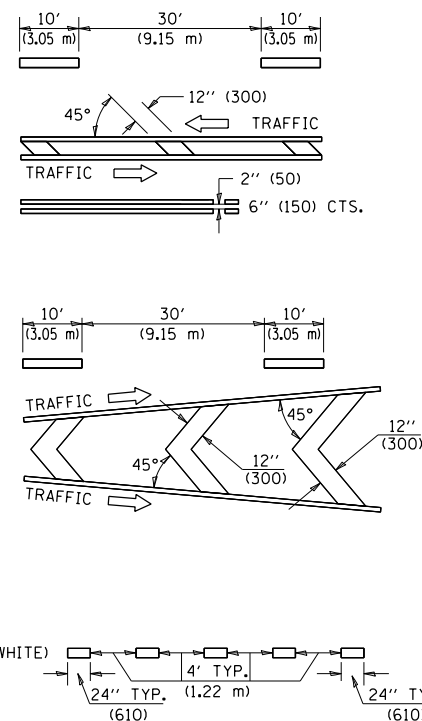
EXIT RAMP TERMINAL with EXCLUSIVE (auxiliary) LANE



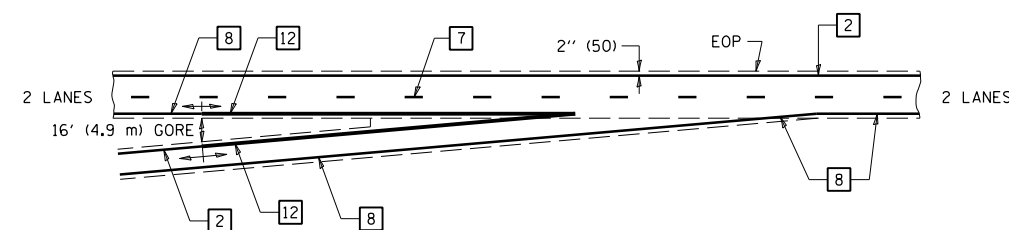
TYPICAL PAVEMENT MARKING LEGEND



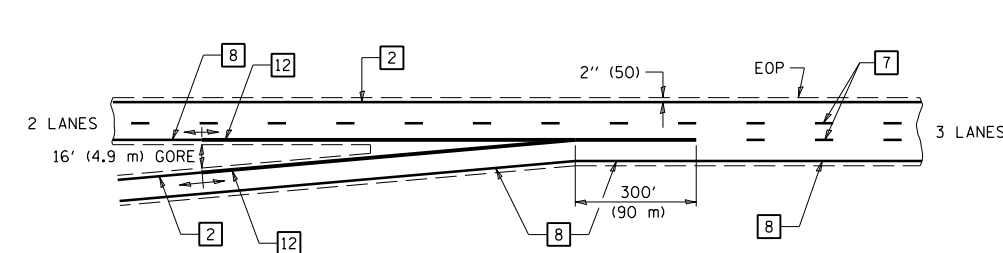
- 1 4" (100) SKIP-DASH (YELLOW)
- 2 4" (100) SOLID (YELLOW)
- 3 12" (300) DIAGONAL (YELLOW)
- 4 4" (100) DOUBLE YELLOW (NARROW)
- 5 RESERVED
- 6 RESERVED
- 7 4" (100) SKIP-DASH (WHITE)
- 8 4" (100) SOLID (WHITE)
- 9 12" (300) DIAGONAL (WHITE)
- 10 6" (150) SOLID (WHITE)
- 11 24" (600) STOP BAR (WHITE)
- 12 8" (200) SOLID (WHITE)
- 13 4" (100) LANE LINE EXTENSIONS (WHITE)



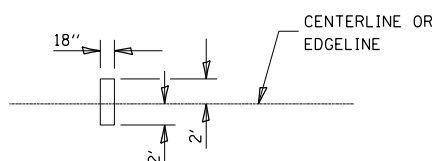
TYPICAL ENTRANCE RAMP TERMINAL



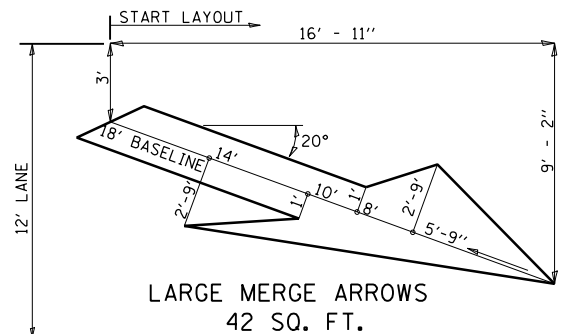
ENTRANCE RAMP TERMINAL with EXCLUSIVE LANE



IT WILL BE NECESSARY TO HAVE A REPRESENTATIVE OF THE STATE POLICE PRESENT SO THAT THE ACCURACY OF MEASUREMENT CAN BE ATTESTED TO IN COURT.



AERIAL SPEED CHECK ZONES



Note: All dimensions are in INCHES (millimeters) unless otherwise shown.

FILE NAME =	USER NAME = shererjm	DESIGNED -	REVISED - 11/06
PROJECT =	PROJECT =	CHECKED -	REVISED -
PLOT SCALE = 40.0000' / in.	DATE = 1/9/2018	DATE -	REVISED -

STATE OF ILLINOIS
DEPARTMENT OF TRANSPORTATION

PAVEMENT MARKING (INTERSTATE & MULTI-LANE APPLICATIONS)

SCALE: SHEET 1 OF 1 SHEETS STA. TO STA.

DISTRICT 5 DETAIL NO. 7800BBBB

F.A.I. RTE.	SECTION	COUNTY	TOTAL SHEETS	SHEET NO.
55/74	(MBPM 2018)BJR	MCLEAN	33	33
CONTRACT NO. 70C99				
ILLINOIS FED. AID PROJECT				