

04-27-2018 LETTING ITEM 097

STATE OF ILLINOIS
DEPARTMENT OF TRANSPORTATION

F.A.P. RTE.	SECTION	COUNTY	TOTAL SHEETS	SHEET NO.
802	[14-HB-1]BRR	CHAMPAIGN	13	1
ILLINOIS			CONTRACT NO. 70D09	

FOR INDEX OF SHEETS, SEE SHEET NO. 2
FOR SUMMARY OF QUANTITIES, SEE SHEET NO. 3

PROPOSED HIGHWAY PLANS

FAP ROUTE 802 (NEIL ST.)
SECTION (14-HB-1)BRR
PROJECT
BRIDGE REPAIR
NEIL ST. OVER I-74 IN CHAMPAIGN
CHAMPAIGN COUNTY

NEIL ST.

**CURRENT
TRAFFIC DATA
STR. 010-0132**

2017 ADT = 17,500
2037 ADT = 20,000
PU+PC % = 97.1
SU % = 1.9
MU% = 1.0

DESIGN DESIGNATION
OTHER PRINCIPAL ARTERIAL

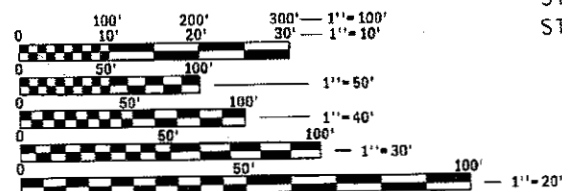
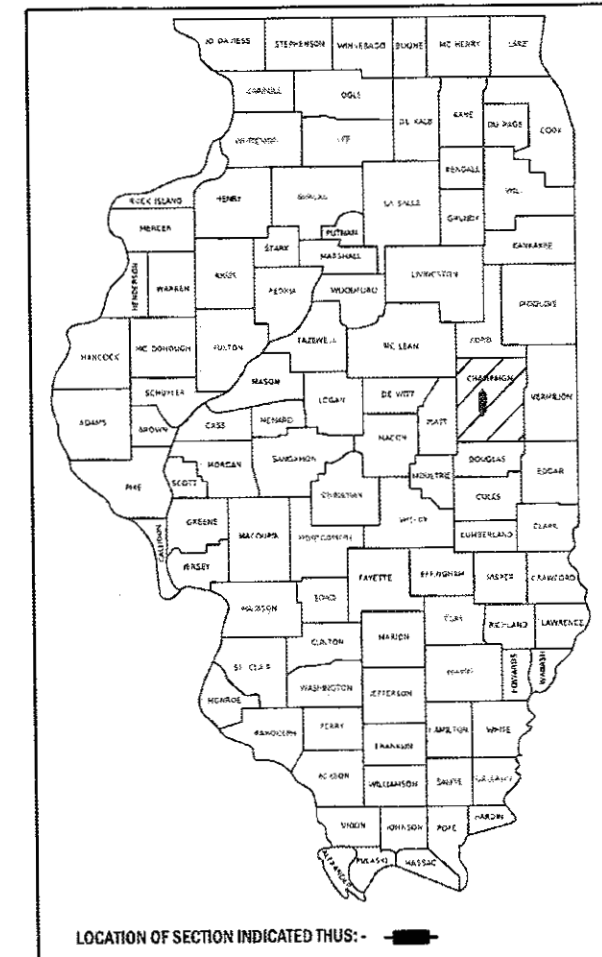
F.A.I.-74

**CURRENT
TRAFFIC DATA**

2017 ADT = 63,100
2037 ADT = 75,700
PU+PC % = 86.6
SU % = 2.9
MU% = 10.5

DESIGN DESIGNATION
INTERSTATE

C-95-011-18

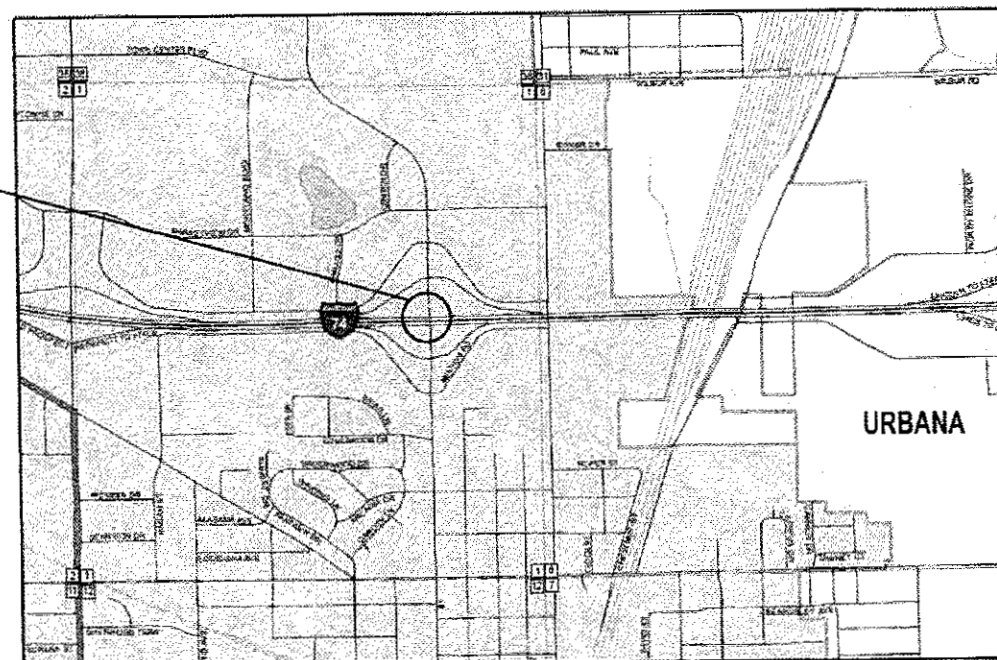


FULL SIZE PLANS HAVE BEEN PREPARED USING STANDARD ENGINEERING SCALES. REDUCED SIZED PLANS WILL NOT CONFORM TO STANDARD SCALES. IN MAKING MEASUREMENTS ON REDUCED PLANS, THE ABOVE SCALES MAY BE USED.

J.U.L.I.E.
JOINT UTILITY LOCATION INFORMATION FOR EXCAVATION
1-800-892-0123
OR 811

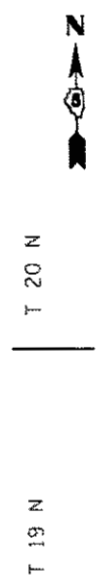
TOWNSHIP: CHAMPAIGN

PROJECT ENGINEER: TIM BRANDENBURG
PROJECT DESIGNER: ERIC SHAWLER
217-465-4181
CONTRACT NO. 70D09



EXISTING S.N. 010-0132
F.A.P. 802 (NEIL ST.)
OVER I-74
STATION 15+00.00
STRUCTURAL STEEL REPAIRS

GROSS LENGTH = 212.00 FT. = 0.040 MILE
NET LENGTH = 212.00 FT. = 0.040 MILE



STATE OF ILLINOIS
DEPARTMENT OF TRANSPORTATION

SUBMITTED January 11 2018
Barbara James
REGION THREE ENGINEER

Mar 23 2018
act
ENGINEER OF DESIGN AND ENVIRONMENT

Mar 23 2018
DIRECTOR OF HIGHWAYS PROJECT IMPLEMENTATION

PRINTED BY THE AUTHORITY
OF THE STATE OF ILLINOIS

INDEX OF SHEETS

SHEET NO.	ITEM
1	COVER SHEET
2	INDEX OF SHEETS
2	LIST OF STANDARDS
2	GENERAL NOTES
3	SUMMARY OF QUANTITIES
4-13	STRUCTURE PLANS S.N. 010-0132

LIST OF HIGHWAY STANDARDS

STANDARD NO.	DESCRIPTION
000001-06	STANDARD SYMBOLS, ABBREVIATIONS AND PATTERNS
001006	DECIMAL OF AN INCH AND FOOT
701101-05	OFF ROAD OPERATION, MULTILANE, 15' TO 24' FROM PAVEMENT EDGE
701601-09	URBAN LANE CLOSURE, MULTILANE, 1W OR 2W WITH NONTRAVERSABLE MEDIAN
701901-07	TRAFFIC CONTROL DEVICES

GENERAL NOTES

G.N.-100

ENGLISH UNITS OF MEASUREMENT SHALL GOVERN OVER AND SUPERSEDE ANY METRIC UNITS SHOWN IN THIS CONTRACT. WHERE INCLUDED, METRIC UNITS ARE FOR INFORMATION ONLY.

GN 105.07C

EXISTING STATE-OWNED AND MAINTAINED UNDERGROUND UTILITY FACILITIES EXIST WITHIN THE ROW. THE DEPARTMENT IS NOT A MEMBER OF JULIE AND DOES NOT LOCATE IT'S OWN FACILITIES. THE CONTRACTOR SHALL BE RESPONSIBLE AT THEIR OWN EXPENSE FOR SECURING AN APPROVED LOCATING FIRM TO LOCATE ALL EXISTING IDOT UNDERGROUND FACILITIES PRIOR TO COMMENCING ANY EXCAVATION, PER THE REQUIREMENTS OF ARTICLE 803 OF THE STANDARD SPECIFICATIONS. UTILITY LOCATES MAY ALSO BE REQUIRED OUTSIDE THE PROJECT LIMITS, SUCH AS FOR TRAFFIC CONTROL SIGNING AND OTHER ITEMS. THE CONTRACTOR MAY OBTAIN, ON REQUEST, PLANS OF EXISTING ELECTRICAL FACILITIES FROM THE DEPARTMENT. FOR FURTHER INFORMATION, THE CONTRACTOR MAY CONTACT THE DISTRICT TRAFFIC OPERATIONS ENGINEER, GARY SIMS, AT 217-251-4859.

THE CONTRACTOR SHALL ALSO BE RESPONSIBLE FOR LOCATING AND PROVIDING PROTECTION FOR FACILITIES DURING ALL PHASES OF CONSTRUCTION. IF, AT ANY TIME, THE FACILITIES ARE DAMAGED, THE CONTRACTOR SHALL IMMEDIATELY NOTIFY THE DEPARTMENT AND MAKE ALL NECESSARY ARRANGEMENTS FOR REPAIR TO THE SATISFACTION OF THE ENGINEER. THIS WORK SHALL BE INCLUDED IN THE CONTRACT BID PRICE AND NO ADDITIONAL COMPENSATION WILL BE ALLOWED.

G.N.-105.09A

ALL ELEVATIONS SHOWN IN THE PLANS ARE BASED ON NORTH AMERICAN VERTICAL DATUM OF 1988. (NAVD 88)

G.N.-609

PRIOR TO ROUTING TRAFFIC ONTO THE SHOULDERS AS SHOWN IN THE STAGING PLANS, THE CONTRACTOR SHALL SECURE THE GRATINGS ON SHOULDER INLETS AS DIRECTED BY THE ENGINEER. THIS WORK WILL BE PAID FOR ACCORDING TO ARTICLE 109.04.

THERE ARE NO COMMITMENTS ASSOCIATED WITH THIS PROJECT.

MODEL: \$MODELNAME\$
FILE NAME: \\P:\\$BID\WEG-ILLINOIS\per\p10301\Documents\IDOT - Official\District 5\Projects\5170099\CADDraws\Structures\0570099_31c_index.dgn

USER NAME = shawleres	DESIGNED -	REVISED -
	DRAWN -	REVISED -
PLOT SCALE = 40.0000' / in.	CHECKED -	REVISED -
PLOT DATE = 10/26/2017	DATE -	REVISED -

**STATE OF ILLINOIS
DEPARTMENT OF TRANSPORTATION**

**INDEX OF SHEETS, STANDARDS, GENERAL NOTES
S.N. 010-0132**

SCALE: SHEET 1 OF 1 SHEETS STA. TO STA.

F.A.P. RTE.	SECTION	COUNTY	TOTAL SHEETS	SHEET NO.
802	(14-HB-1)BRR	CHAMPAIGN	13	2
CONTRACT NO. 70D09				
ILLINOIS FED. AID PROJECT				

MODEL: \$MODELNAME\$
 FILE NAME: \\P:\04\BIDD\INTEG Illinois\proj\p\7009\Documents\DOT Office\District 3\Projects\1572009\CAD\Bridges\Structures\1572009_sht_500.dgn

CHAMPAIGN CO.
 FAP 802 NEIL ST.
 URBAN ; MULTI LANE
 BRIDGE REPAIR
 S.N. 010-0132
 100% STATE
 0013

CODE NO.	ITEM	UNIT	QUANTITY
50300300	PROTECTIVE COAT	SQ YD	11.0
50500405	FURNISHING AND ERECTING STRUCTURAL STEEL	POUND	4,240.0
50800205	REINFORCEMENT BARS, EPOXY COATED	POUND	70.0
67100100	MOBILIZATION	LSUM	1.0
70102630	TRAFFIC CONTROL AND PROTECTION, STANDARD 701601	LSUM	1.0
X7015005	CHANGEABLE MESSAGE SIGN	CAL DA	24.0
Z0001903	STRUCTURAL STEEL REMOVAL	POUND	4,040.0
Z0001905	STRUCTURAL STEEL REPAIR	POUND	1,630.0
Z0012754	STRUCTURAL REPAIR OF CONCRETE (DEPTH EQUAL TO OR LESS THAN 5 INCHES)	SQ FT	97.0

9 NO SPECIALTY ITEM

USER NAME = shawleres	DESIGNED -	REVISED -
	DRAWN -	REVISED -
PLOT SCALE = 40.0000' / in.	CHECKED -	REVISED -
PLOT DATE = 10/31/2017	DATE -	REVISED -

STATE OF ILLINOIS
 DEPARTMENT OF TRANSPORTATION

SUMMARY OF QUANTITIES S.N. 010-0132			
SCALE:	SHEET 1	OF 1 SHEETS	STA. TO STA.

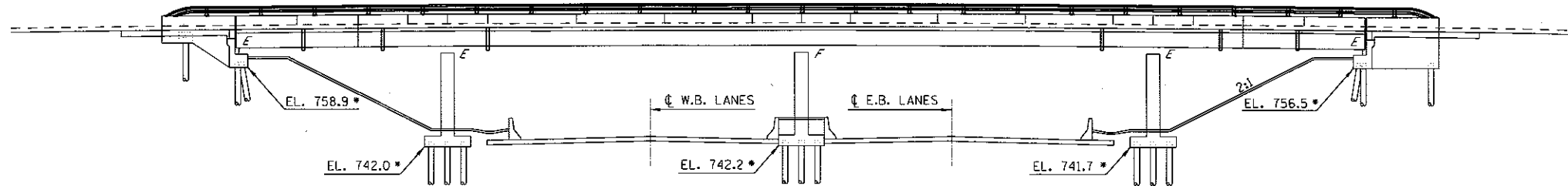
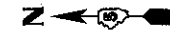
F.A.P. RTE.	SECTION	COUNTY	TOTAL SHEETS	SHEET NO.
802	(14-HB-1)BRR	CHAMPAIGN	13	3
CONTRACT NO. 70D09				
ILLINOIS FED. AID PROJECT				

STRUCTURE NO. 010-0132 BUILT AS SEC. 14-HB-1 IN 1956 AT STATION 186+68.80. A FOUR CONTINUOUS SPANS, 2 @ 38'-9", 2 @ 65'-5", WITH WIDE FLANGE STEEL BEAMS AND TWO PIN AND LINK JOINTS SPANS 1 AND 4 AND A 7/2" REINFORCED CONCRETE DECK. THE STRUCTURE HAS PILE BENT ABUTMENTS AND TRIPLE HAMMERHEAD PIERS WITH FOOTINGS ON PILES. IN 1992 THE DECK WAS REPLACED AND WIDENED. AN OUT TO OUT WIDTH OF 87'-0" IS CONSTANT OVER SPANS 1 & 2 THEN ROUGHLY 40' INTO SPAN 3 THE OUT TO OUT WIDTH TAPPERS TO 91'-4 3/8" AT THE SOUTH ABUTMENT. A VARIABLE WIDTH CONCRETE MEDIAN DIVIDES NORTH AND SOUTH BOUND TRAFFIC. TURN LANES WERE ESTABLISHED ACROSS THE STRUCTURE ALLOWING FOR SIGNALIZATION OF THE ENTRANCE AND EXIT RAMP TO I-74. VARIABLE WIDTH SIDEWALKS CARRIES FOOT TRAFFIC ACROSS THE STRUCTURE.

GENERAL PLAN & ELEVATION

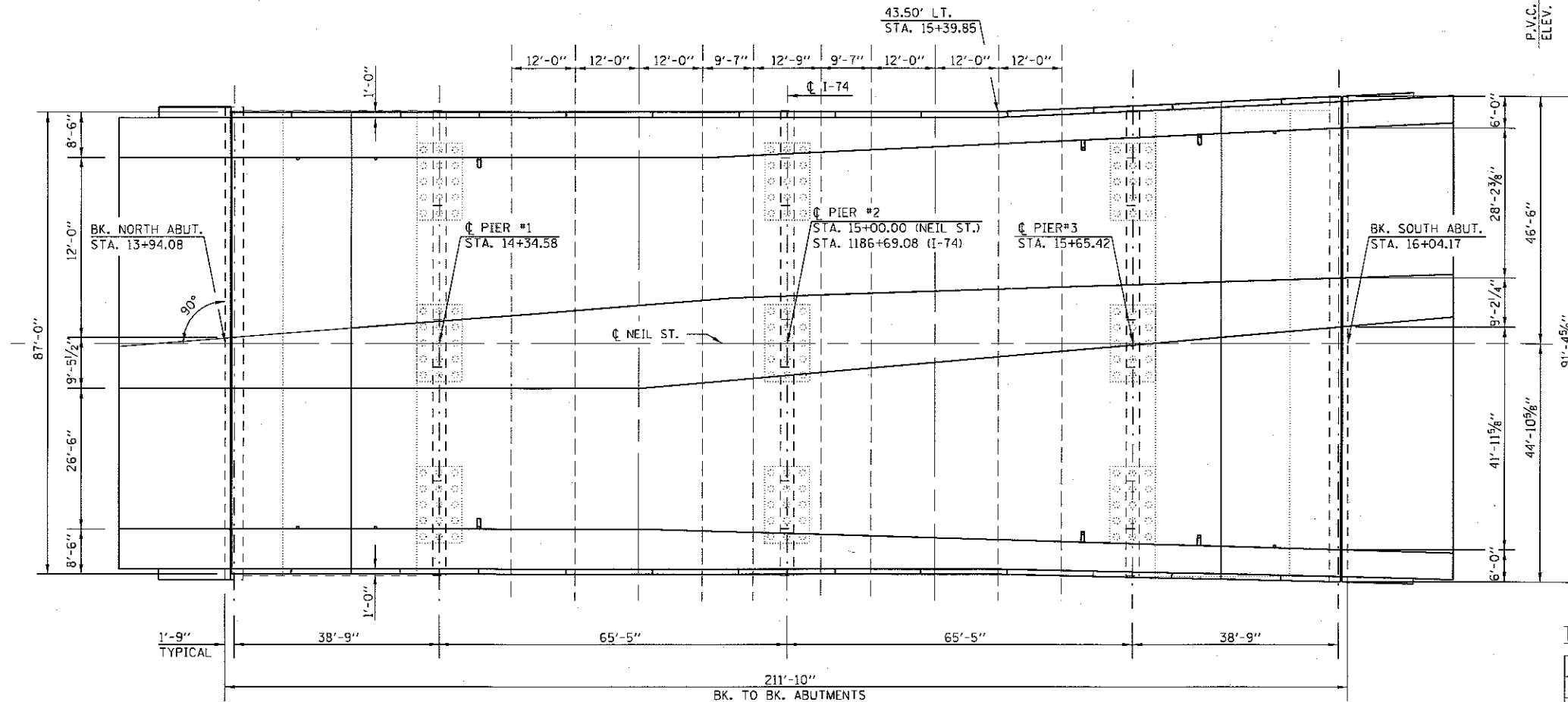
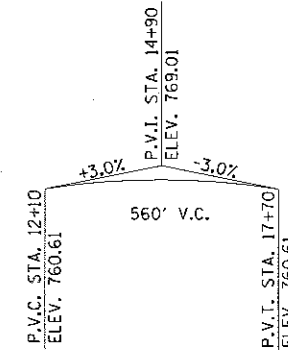
S.N. 010-0132

WORK SHALL BE COMPLETED WITH STAGE CONSTRUCTION.



* ELEVATIONS TAKEN FROM AS-BUILT PLANS AND ARE SHOWN FOR PERSPECTIVE ONLY.

ELEVATION



David Carl Puzey 3/20/18
Expires 1/30/18

TOTAL BILL OF MATERIALS

ITEM	UNIT	TOTAL
STRUCTURAL STEEL REMOVAL	POUND	4,040.0
FURNISHING AND ERECTING STRUCTURAL STEEL	POUND	4,240.0
STRUCTURAL STEEL REPAIR	POUND	1,630.0
STRUCTURAL REPAIR OF CONCRETE (DEPTH = TO OR < THAN 5 INCHES)	SQ FT	97.0
REINFORCEMENT BARS, EPOXY COATED	POUNDS	70.0
PROTECTIVE COAT	SQ YD	11.0

MODEL: \$MODELNAME\$ FILE NAME: p:\1100481\INTEC\Illinois\pav\DOT\Documents\DOT_Offices\District 5\Projects\0570009\CAD\Drawings\Structures\0570009_Sht_PavSfrs.dgn

USER NAME = shawleres	DESIGNED - ESS	REVISED -
PLOT SCALE = 40.0000' / in.	DRAWN - ESS	REVISED -
PLOT DATE = 3/20/2018	CHECKED - TJB	REVISED -
	DATE -	REVISED -

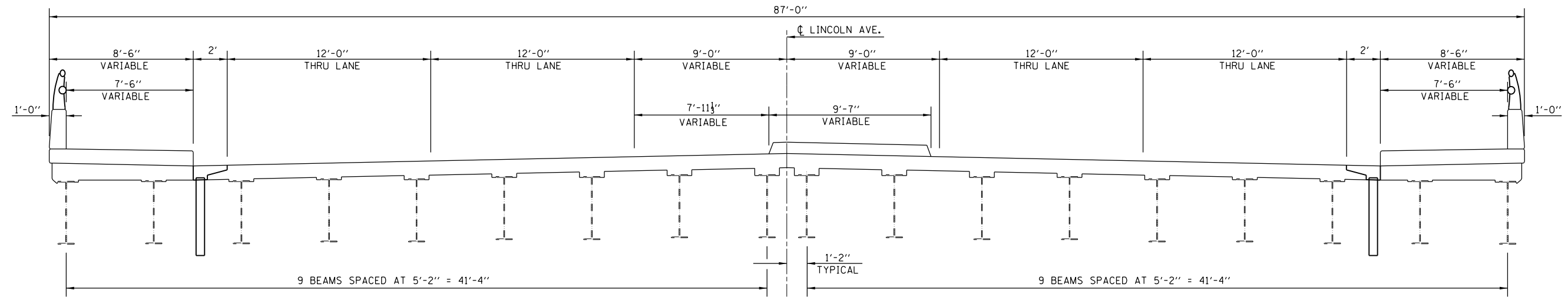
STATE OF ILLINOIS
DEPARTMENT OF TRANSPORTATION

GENERAL PLAN & ELEVATION
NEIL ST - S.N. 010-0132

SCALE: SHEET 1 OF 10 SHEETS STA. TO STA.

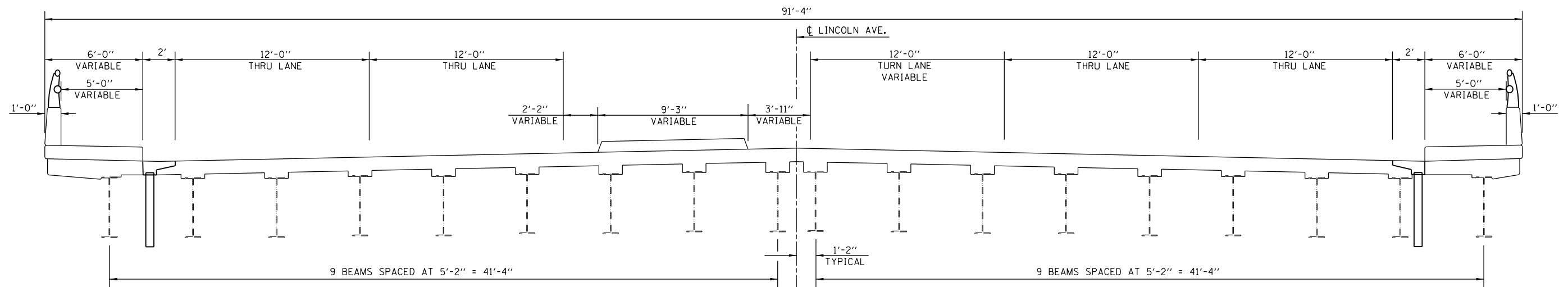
F.A.P. RTE.	SECTION	COUNTY	TOTAL SHEETS	SHEET NO.
B02	(14-HB-1)BR	CHAMPAIGN	13	4
ILLINOIS FED. AID PROJECT			CONTRACT NO. 70D09	

EXISTING DECK CROSS SECTION NORTH ABUTMENT



LOOKING SOUTH

EXISTING DECK CROSS SECTION SOUTH ABUTMENT



LOOKING SOUTH

MODEL: \\MODELS\MAME FILE NAME: \\PULCRABE\ENR\NTEC\Illinois.gov\PIVDOT\Documents\DOT Office\District 5\Projects\0570D09\CADD\Structures\0570D09_Sht_Repairs.dgn

USER NAME = shawleres	DESIGNED -	REVISED -
	DRAWN -	REVISED -
PLOT SCALE = 40.0000' / in.	CHECKED -	REVISED -
PLOT DATE = 10/24/2017	DATE -	REVISED -

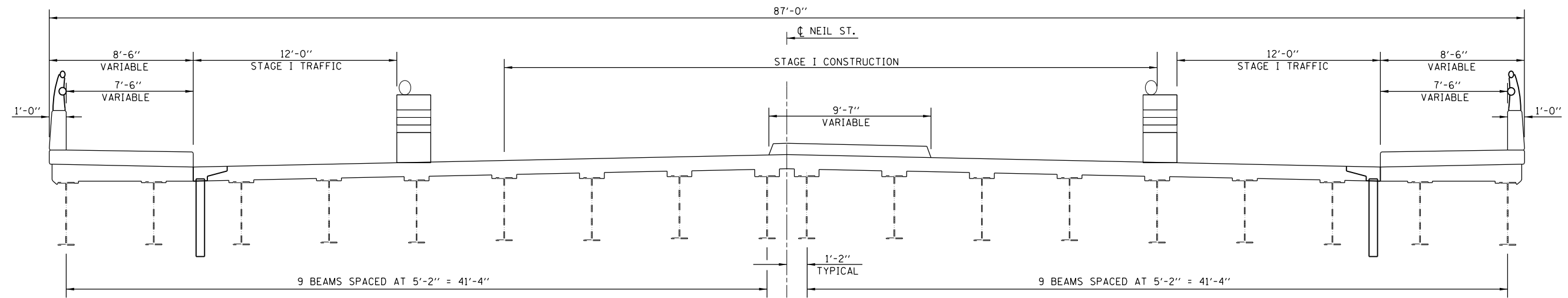
**STATE OF ILLINOIS
DEPARTMENT OF TRANSPORTATION**

**BRIDGE DECK CROSS SECTIONS
S.N. 010-0132**

SCALE: SHEET 2 OF 10 SHEETS STA. TO STA.

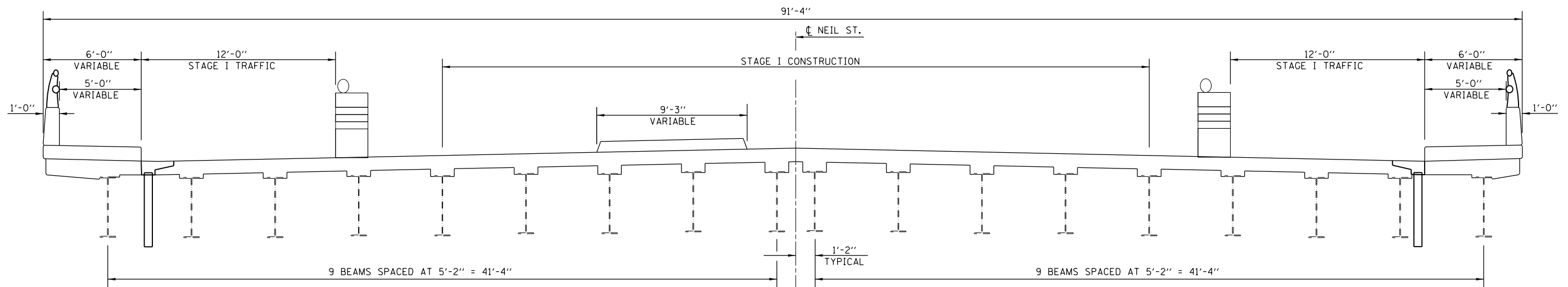
F.A.P. RTE.	SECTION	COUNTY	TOTAL SHEETS	SHEET NO.
802	(14-HB-1)BRR	CHAMPAIGN	13	5
CONTRACT NO. 70D09				
ILLINOIS FED. AID PROJECT				

STAGE ONE CONSTRUCTION NORTH ABUTMENT



LOOKING SOUTH

STAGE ONE CONSTRUCTION SOUTH ABUTMENT



LOOKING SOUTH

MODEL: \\MODELMATE...
 FILE: \\MODELMATE...

USER NAME = shawleres	DESIGNED -	REVISED -
PLOT SCALE = 40.0000' / in.	DRAWN -	REVISED -
PLOT DATE = 10/24/2017	CHECKED -	REVISED -
	DATE -	REVISED -

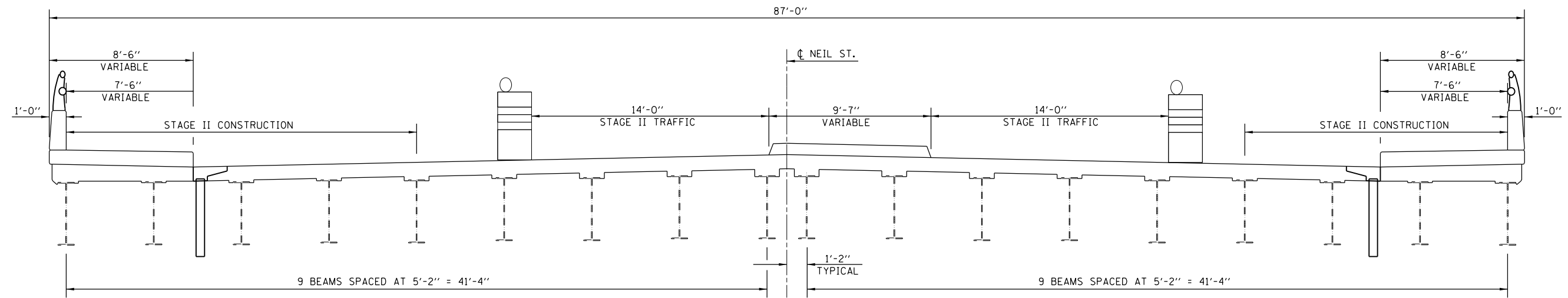
**STATE OF ILLINOIS
DEPARTMENT OF TRANSPORTATION**

**STAGE CONSTRUCTION DETAILS
S.N. 010-0132**

SCALE: SHEET 3 OF 10 SHEETS STA. TO STA.

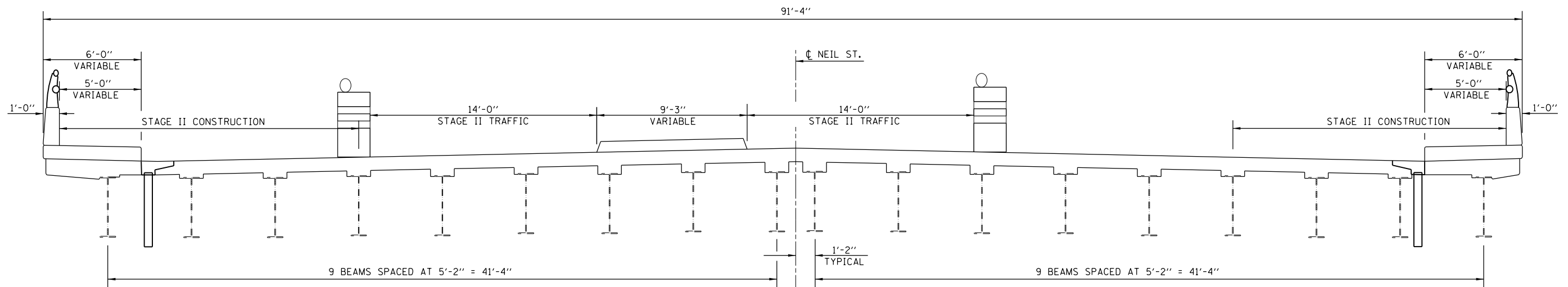
F.A.P. RTE.	SECTION	COUNTY	TOTAL SHEETS	SHEET NO.
802	(14-HB-1)BRR	CHAMPAIGN	13	6
CONTRACT NO. 70D09				
ILLINOIS FED. AID PROJECT				

STAGE TWO CONSTRUCTION NORTH ABUTMENT



LOOKING SOUTH

STAGE TWO CONSTRUCTION SOUTH ABUTMENT



LOOKING SOUTH

MODEL: \\MODELS\MAME...
 FILE NAME: \\PULCRUM\ENGINEERING\Illinois.gov\RWIDOT\Documents\DOT_Offices\District 5\Projects\0570D09\CADD\Structures\0570D09_Sht_Repairs.dgn

USER NAME = shawleres	DESIGNED -	REVISED -
	DRAWN -	REVISED -
PLOT SCALE = 40.0000' / in.	CHECKED -	REVISED -
PLOT DATE = 10/24/2017	DATE -	REVISED -

**STATE OF ILLINOIS
DEPARTMENT OF TRANSPORTATION**

**STAGE CONSTRUCTION DETAILS
S.N. 010-0132**

SCALE: SHEET 4 OF 10 SHEETS STA. TO STA.

F.A.P. RTE.	SECTION	COUNTY	TOTAL SHEETS	SHEET NO.
802	(14-HB-1)BRR	CHAMPAIGN	13	7
CONTRACT NO. 70D09				
ILLINOIS FED. AID PROJECT				

NOTES

All structural steel shall conform to AASHTO Classification M-270 Gr. 36, unless otherwise noted.

Plan dimensions and details relative to existing plans are subject to nominal construction variations. The Contractor shall field verify existing dimensions and details affecting new construction and make necessary approved adjustments prior to construction or ordering of materials. Such variations shall not be cause for additional compensation for a change in scope of the work, however, the Contractor will be paid for the quantity actually furnished at the unit price bid for the work.

Fasteners shall be high strength bolts. Bolts 3/4"φ, open holes 13/16"φ, unless otherwise noted.

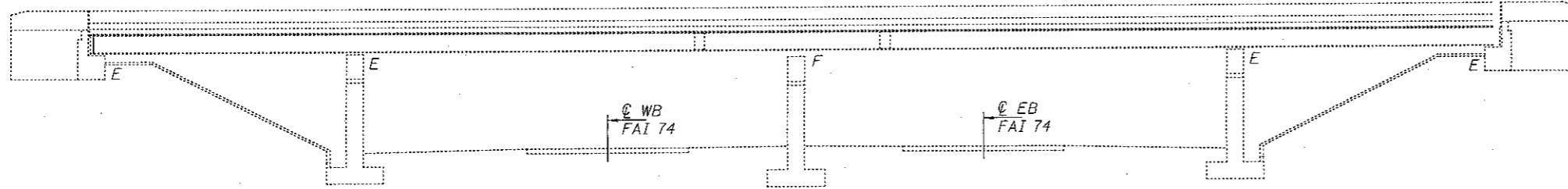
Diaphragm connection holes shall be 15/16"φ for 3/4"φ bolts. Two hardened washers shall be required at diaphragm connections.

Cost of removal and re-installation of all members necessary to complete the work as detailed on the plans and as specified in the Special Provisions shall be included with Furnishing and Erecting Structural Steel.

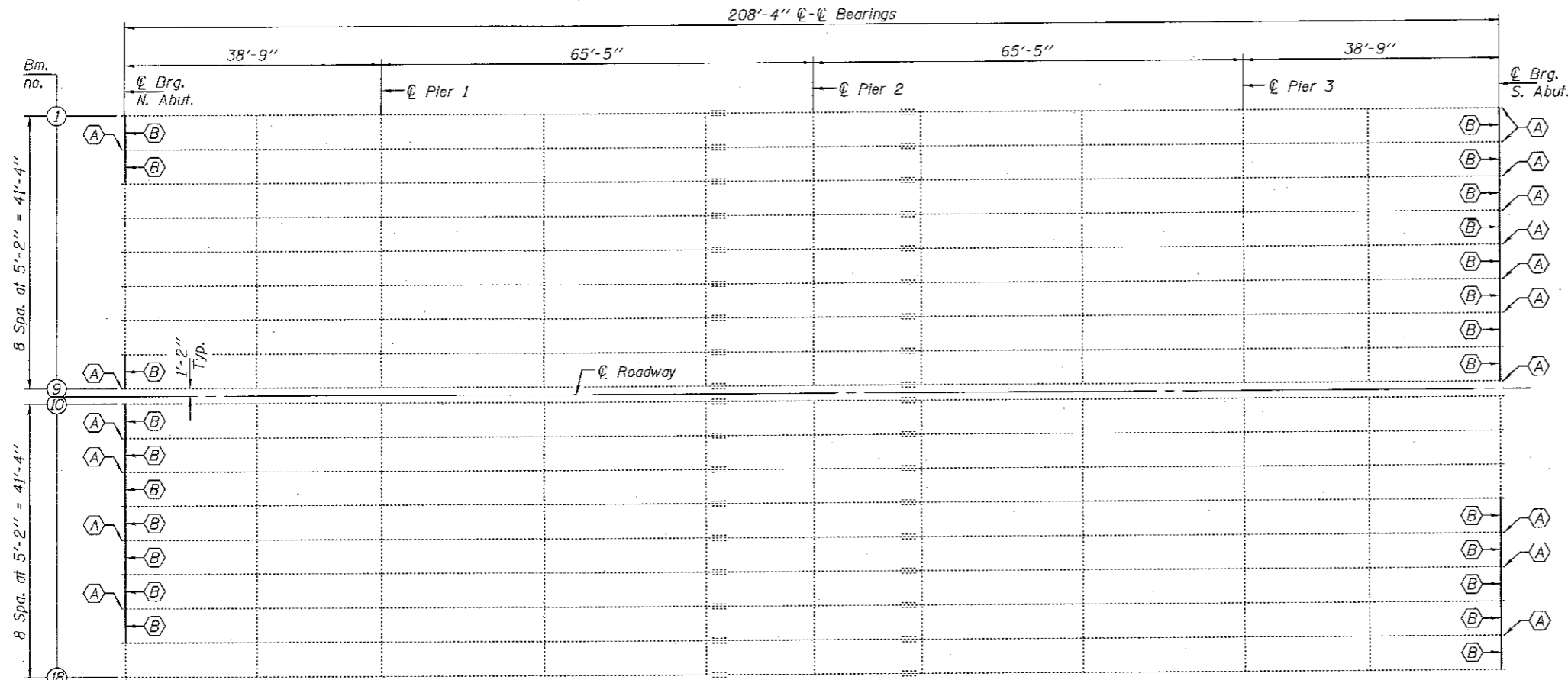
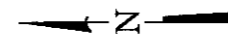
Existing structural steel that will be in contact with new structural steel shall be cleaned and painted prior to erection as required by the GBSP "Cleaning and Painting Contact Surface Areas of Existing Steel Structures".

The existing structural steel coating contains lead. The Contractor shall take appropriate precautions to deal with the presence of lead on this project.

All structural steel shall be shop painted with the inorganic zinc rich primer per AASHTO M300, Type I. Cost included with Furnishing & Erecting Structural Steel and Structural Steel Repair.



ELEVATION



PLAN

- (A) - Repair Beam End
- (B) - Remove & Replace Diaphragm & Side Clip L's

BILL OF MATERIAL

Note:
Diaphragms and Side Clip L's are included with Furnishing & Erecting Structural Steel. All other steel is included with Structural Steel Repair.

ITEM	UNIT	QUANTITY
Structural Steel Removal	Pound	4040
Structural Steel Repair	Pound	1630
Furnishing & Erecting Structural Steel	Pound	4240

DESIGNED SMR
 CHECKED RPN
 DRAWN baliva
 CHECKED SMR RPN

EXAMINED *Timothy A. Annett*
 ENGINEER OF STRUCTURAL SERVICES
 PASSED *A. Carl Perry*
 ENGINEER OF BRIDGES AND STRUCTURES

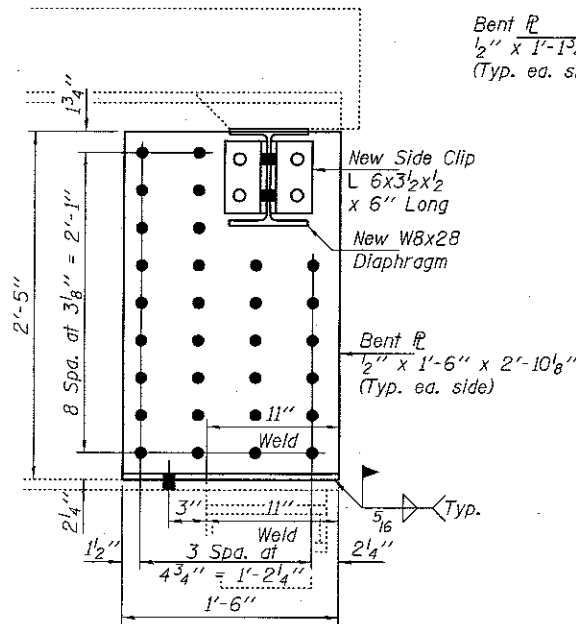
DATE MARCH 16, 2018
 REVISED
 REVISED

STATE OF ILLINOIS
 DEPARTMENT OF TRANSPORTATION

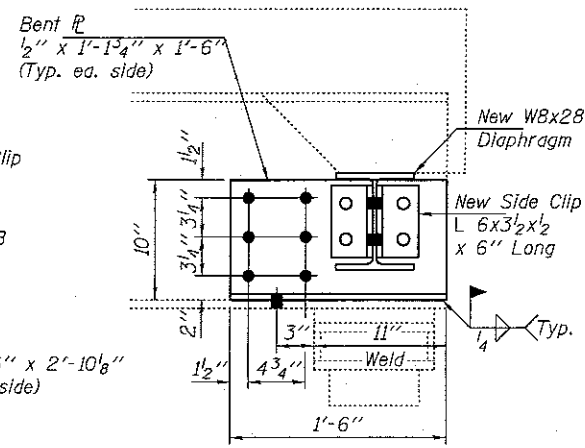
PLAN AND ELEVATION
 FAP 802 (NEIL ST.) OVER FAI 74
 SN 010-0132

SHEET NO. 1 OF 2 SHEETS

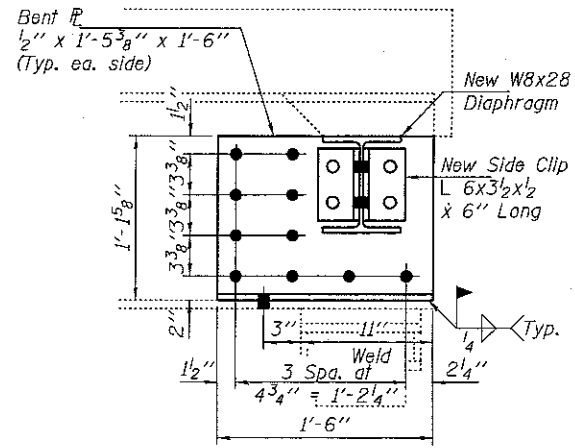
F.A.P. RTE.	SECTION	COUNTY	TOTAL SHEETS	SHEET NO.
802	04-HB-10RR	CHAMPAIGN	13	8
CONTRACT NO. 70D09				ILLINOIS FED. AID PROJECT



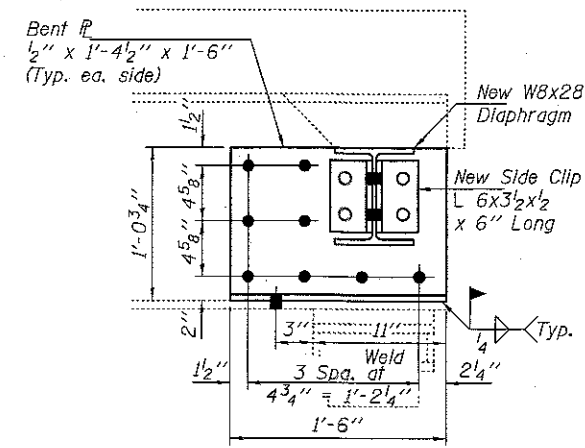
**REPAIR A
AT BEAM 1S**



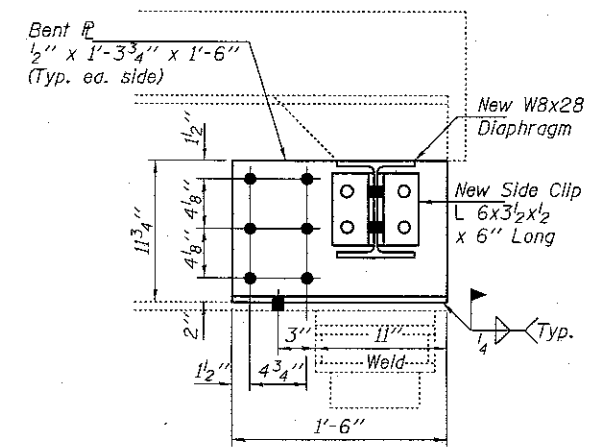
**REPAIR A AT
BEAMS 9N, 9S, & 11N**



**REPAIR A AT
BEAMS 2N, 2S, 3S, 16N & 17S**

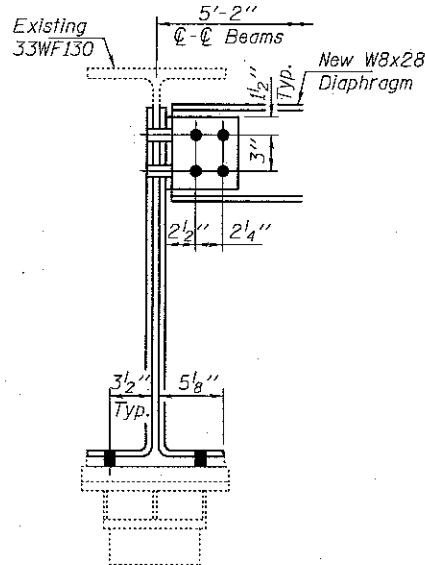


**REPAIR A AT
BEAMS 4S, 5S, 14N, 14S & 15S**

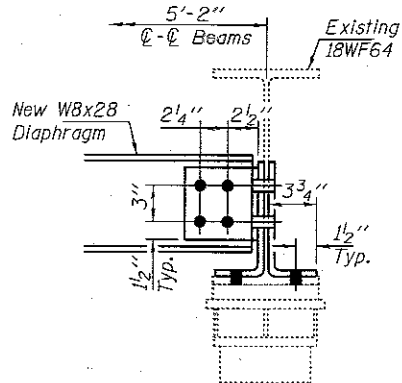


**REPAIR A AT
BEAMS 6S, 7S, & 12N**

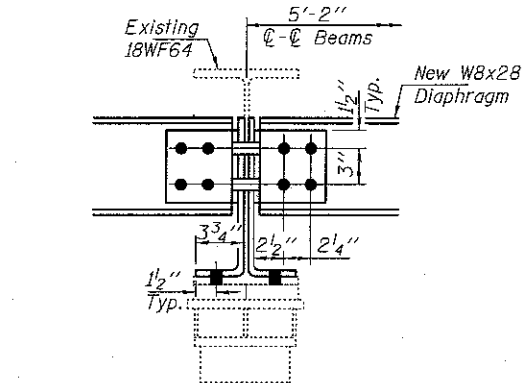
- - Use holes in existing steel as template
- - Use holes in new steel as template



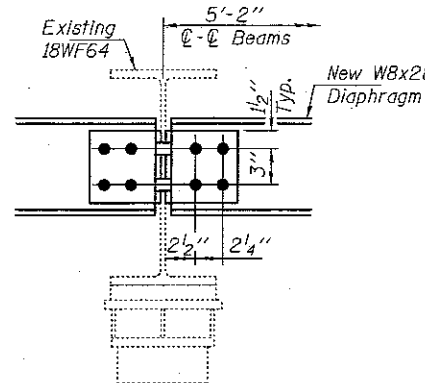
**REPAIR B
AT BEAM 1S**



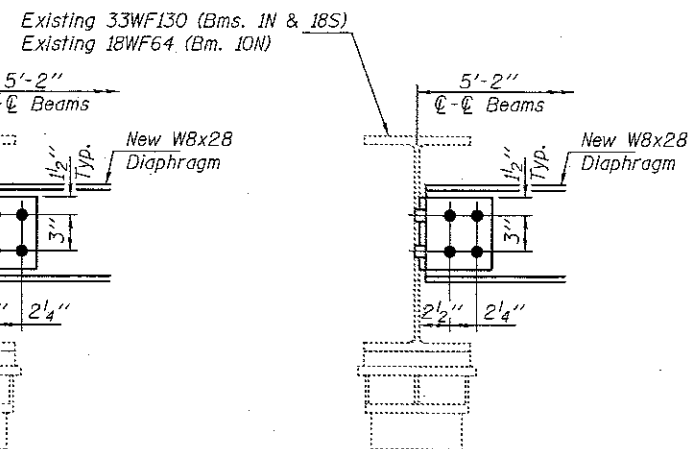
**REPAIR B AT
BEAM 9N & 9S**



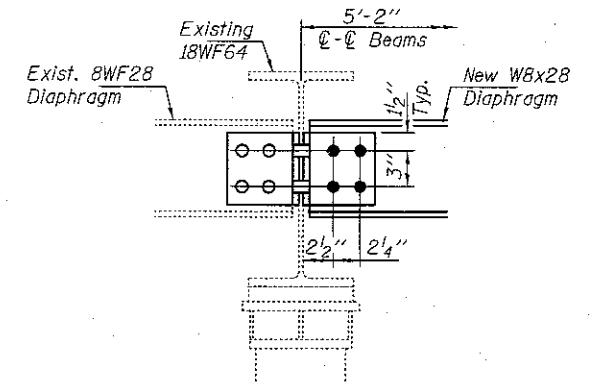
**REPAIR B AT
BEAMS 2N, 2S, 3S, 4S, 5S, 6S,
7S, 11N, 12N, 14N, 14S, 15S & 16N**



**REPAIR B AT
BEAMS 8S,
13N, 15N & 16S**



**REPAIR B AT
BEAMS 1N, 10N & 18S**



**REPAIR B AT
BEAMS 3N, 8N, 13S & 17N**

DESIGNED SMR
CHECKED RPN
DRAWN baliva
CHECKED SMR RPN

EXAMINED *Imoty A. ...*
PASSED *Carl ...*
ENGINEER OF STRUCTURAL SERVICES
ENGINEER OF BRIDGES AND STRUCTURES

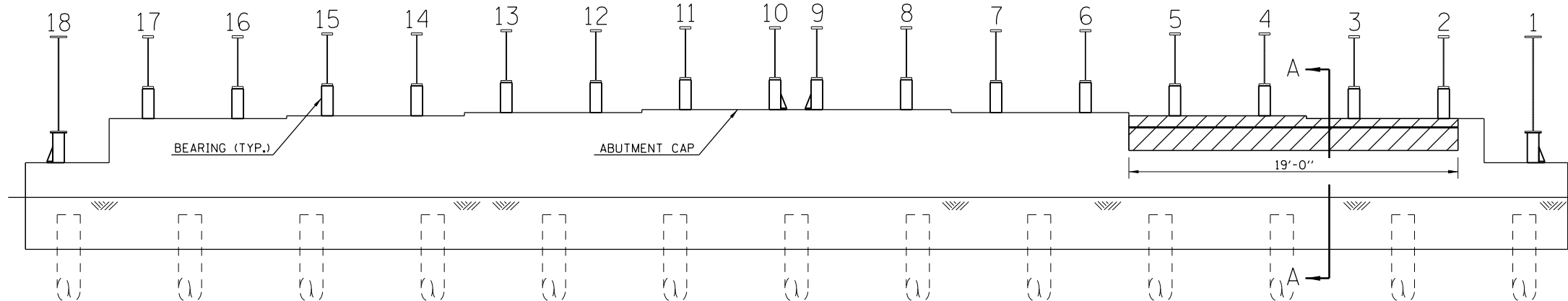
DATE MARCH 16, 2018
REVISED
REVISED

STATE OF ILLINOIS
DEPARTMENT OF TRANSPORTATION

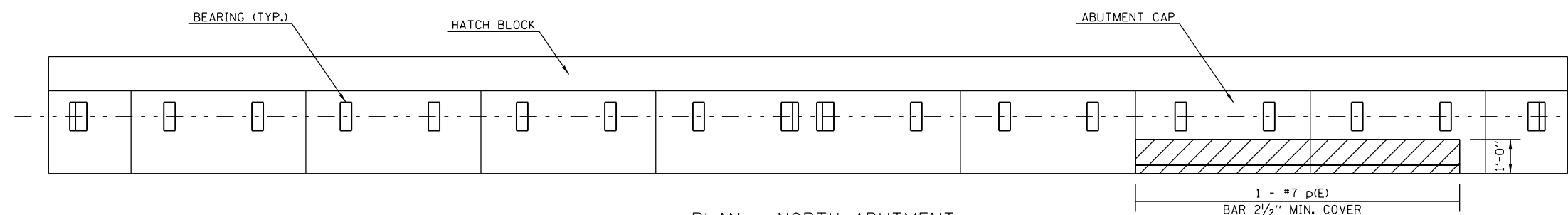
REPAIR DETAILS
SN 010-0132

SHEET NO. 2 OF 2 SHEETS

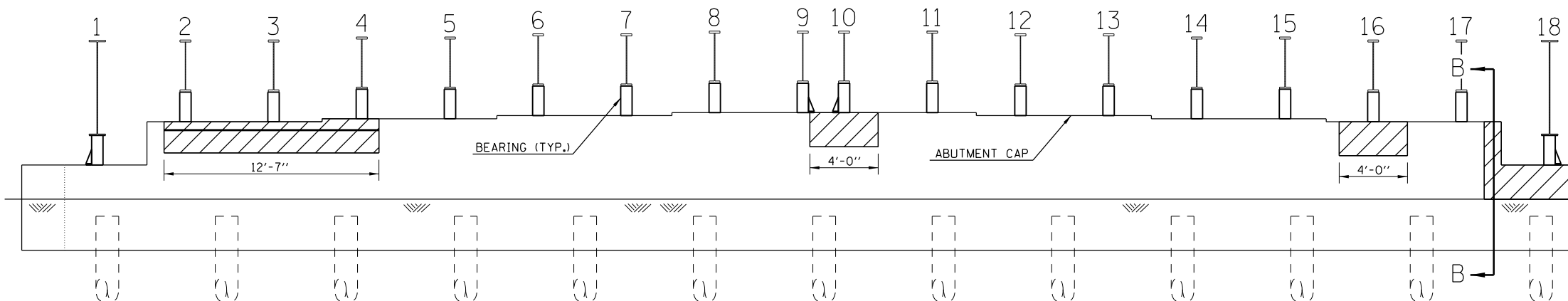
F.A.P. RTE. 802	SECTION 04-HB-118RR	COUNTY CHAMPAIGN	TOTAL SHEETS 13	SHEET NO. 9
CONTRACT NO. T0D09			ILLINOIS FED. AID PROJECT	



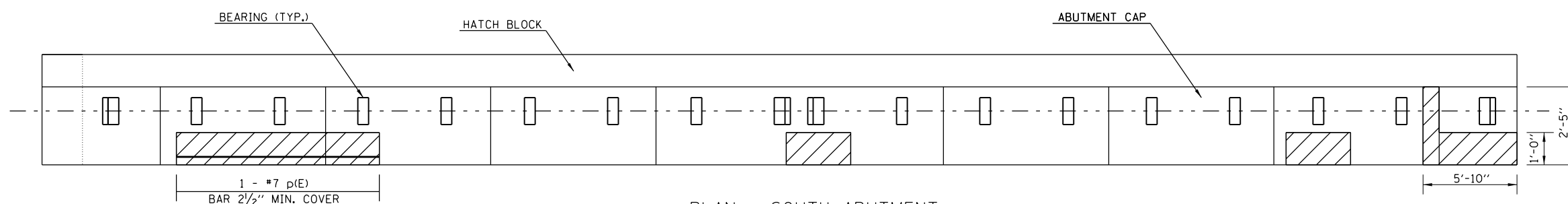
ELEVATION - NORTH ABUTMENT



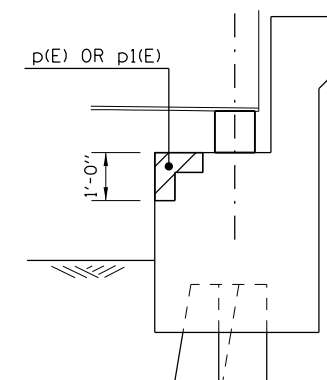
PLAN - NORTH ABUTMENT



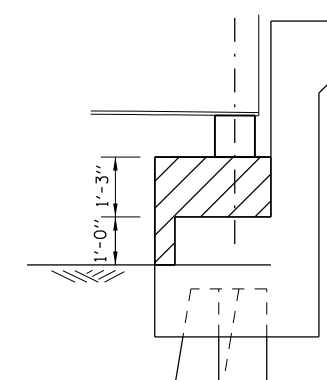
ELEVATION - SOUTH ABUTMENT



PLAN - SOUTH ABUTMENT



SECTION A-A



SECTION B-B

NOTE

SEE SPECIAL PROVISION FOR STRUCTURAL REPAIR OF CONCRETE.

REINFORCEMENT BARS DESIGNATED (e) SHALL BE EPOXY COATED.

STRUCTURE REPAIR OF CONCRETE DEPTH LESS THAN OR EQUAL TO 5"

BILL OF MATERIALS

BAR	NO.	SIZE	LENGTH	SHAPE
p(E)	1	#7	19'-0"	
p1(E)	1	#7	12'-7"	
ITEM	UNIT	TOTAL		
REINFORCEMENT BARS, EPOXY COATED	POUND	70.0		
STRUCTURE REPAIR OF CONCRETE (DEPTH = TO OR < 5 INCHES)	SQ FT	97.0		
PROTECTIVE COAT	SQ YD	11.0		

MODEL: \\MODELFNAME
 FILE: \\MODELFNAME\PROJECTS\70D09\CADD\Structures\70D09_Sst_Repairs.dgn
 PROJECT: \\MODELFNAME\PROJECTS\70D09\CADD\Structures\70D09_Sst_Repairs.dgn

USER NAME = shawleres	DESIGNED -	REVISED -
PLOT SCALE = 40.0000 ' / in.	DRAWN -	REVISED -
PLOT DATE = 10/31/2017	CHECKED -	REVISED -
	DATE -	REVISED -

STATE OF ILLINOIS
DEPARTMENT OF TRANSPORTATION

STRUCTURAL REPAIR OF CONCRETE
S.N. 010-0132

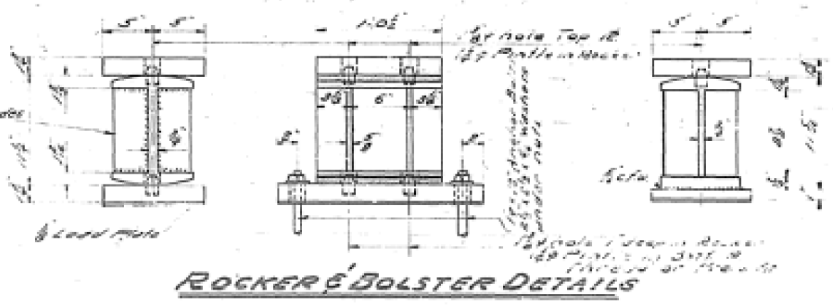
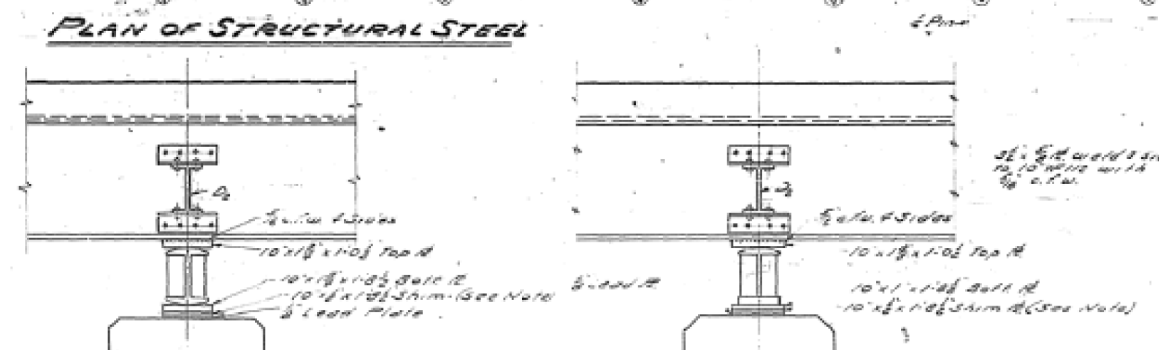
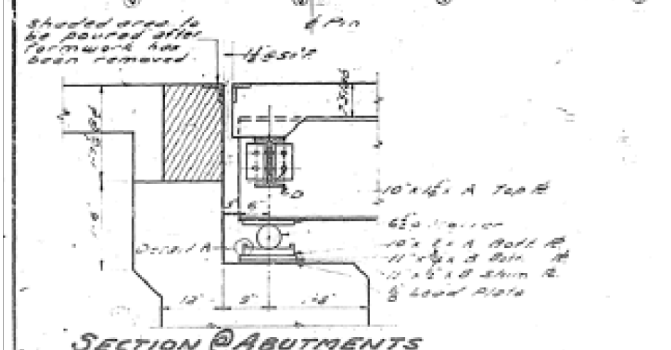
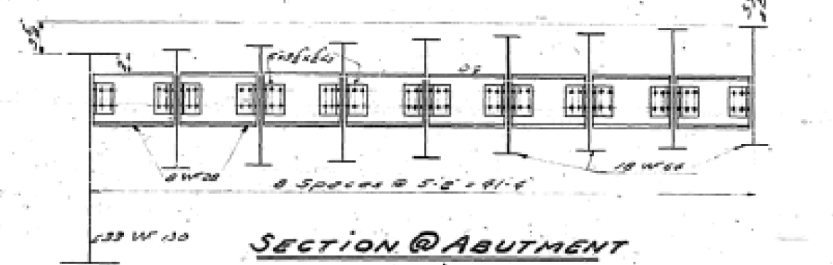
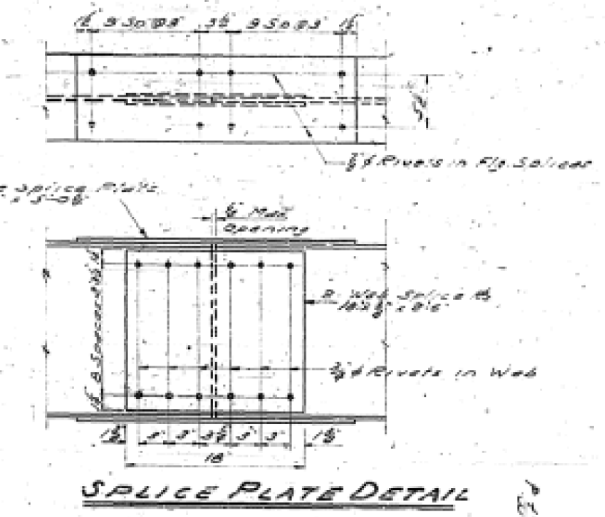
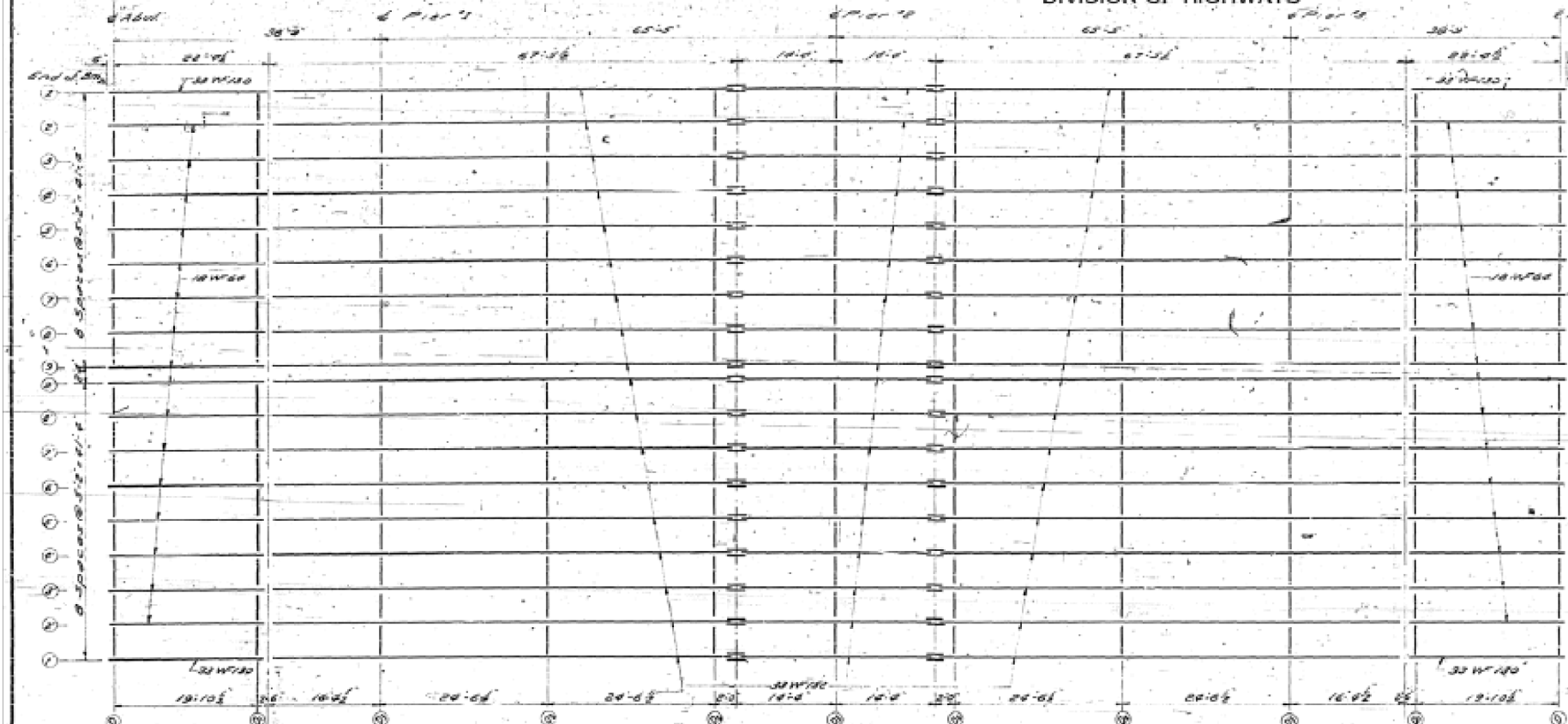
SCALE: SHEET 7 OF 10 SHEETS STA. TO STA.

F.A.P. RTE. 802	SECTION (14-HB-1)BRR	COUNTY CHAMPAIGN	TOTAL SHEETS 13	SHEET NO. 10
ILLINOIS FED. AID PROJECT			CONTRACT NO. 70D09	

AS-BUILT PLANS (1956) FOR INFORMATION ONLY

STATE OF ILLINOIS
DEPARTMENT OF PUBLIC WORKS & BUILDINGS
DIVISION OF HIGHWAYS

DATE	SECTION	COUNTY	TOTAL SHEETS	SHEET NO.
10-10-56	(14-HB-1)BR	CHAMPAIGN	13	8
CONTRACT NO. 70D09				

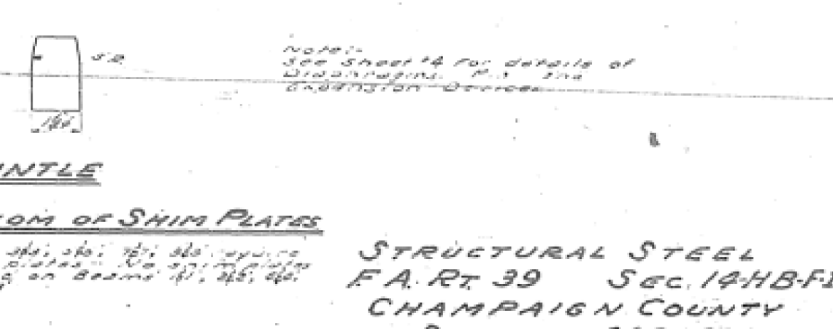
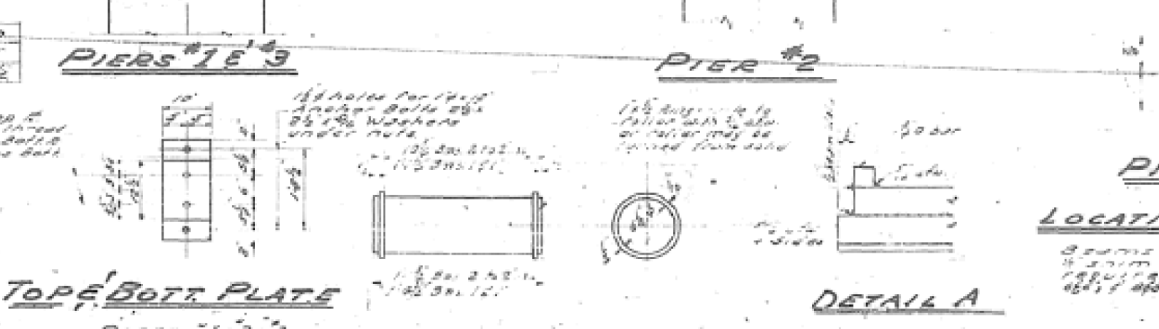


SECTION @ ABUTMENTS

Beam Size	A	B	C	D
10 W100	10 1/2	11 1/2	4 1/2	5 1/2
12 W100	12 1/2	13 1/2	5 1/2	6 1/2

DESIGNED BY: *George P. Packer*
 CHECKED BY: *Edw. A. Stewart*
 DRAWN BY: *Edw. A. Stewart*
 CHECKED BY: *Edw. A. Stewart*

DESIGNED BY: *V. W. Roswell*
 CHECKED BY: *V. W. Roswell*
 DRAWN BY: *V. W. Roswell*
 CHECKED BY: *V. W. Roswell*



STRUCTURAL STEEL
F.A. RT. 39 SEC. 14HB-F1
CHAMPAIGN COUNTY
STATION 186+68.8

MODEL: SHORTRUN.MXD FILE NAME: P:\ILLINOIS\BENTON\TEC\lib\ink\pww\DOT\Documents\ASBUILT\Projects\05700909\CADD\ASB\Structures\05700909_Sst_Repairs.dwg

USER NAME = shawleres	DESIGNED -	REVISED -
	DRAWN -	REVISED -
PLOT SCALE = 40.0000 ' / in.	CHECKED -	REVISED -
PLOT DATE = 10/24/2017	DATE -	REVISED -

STATE OF ILLINOIS
DEPARTMENT OF TRANSPORTATION

AS-BUILT PLANS
S.N. 010-0132

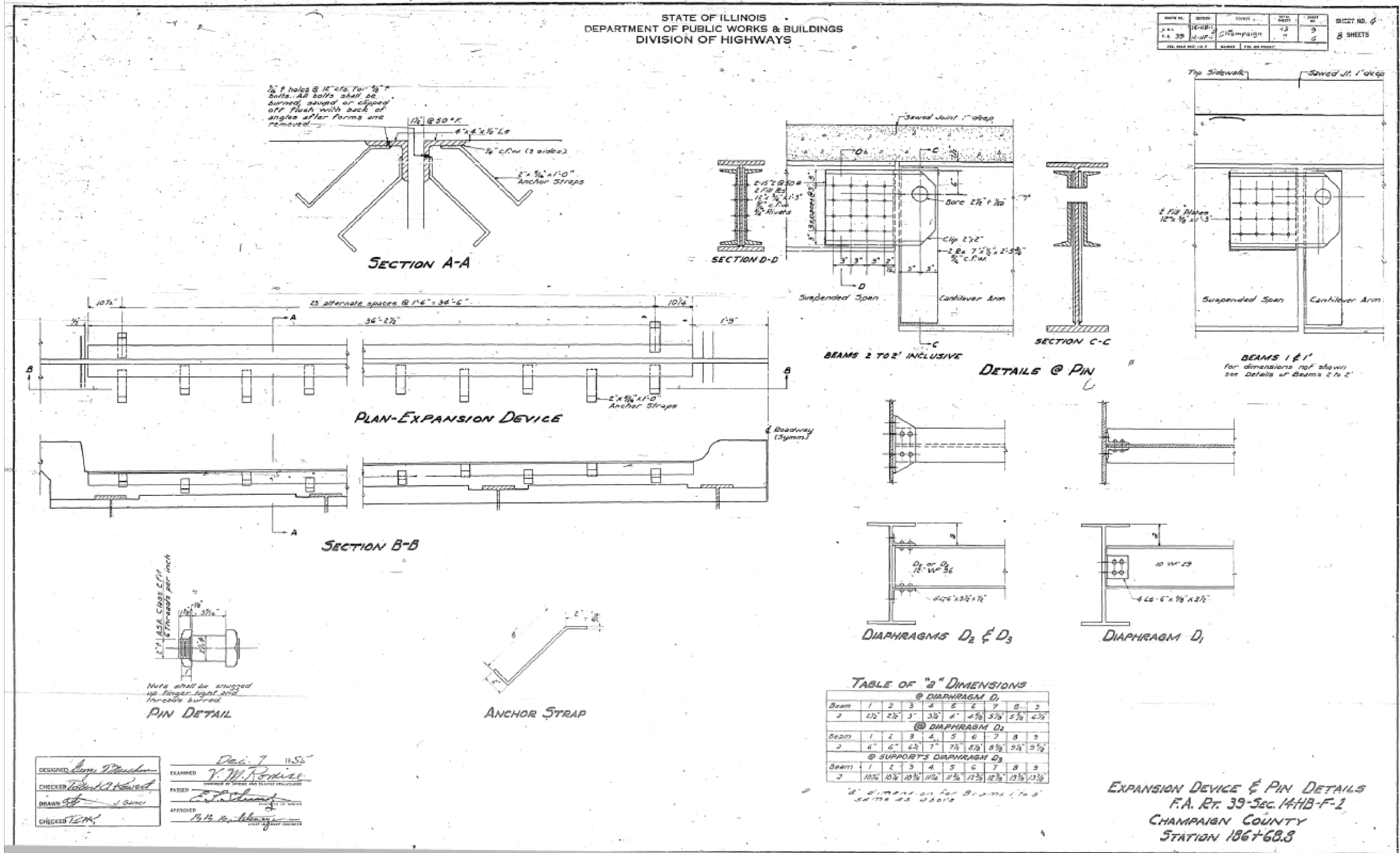
SCALE: SHEET 8 OF 10 SHEETS STA. TO STA.

F.A.P. RTE.	SECTION	COUNTY	TOTAL SHEETS	SHEET NO.
802	(14-HB-1)BR	CHAMPAIGN	13	11
CONTRACT NO. 70D09				
ILLINOIS FED. AID PROJECT				

AS-BUILT PLANS (1956) FOR INFORMATION ONLY

STATE OF ILLINOIS
DEPARTMENT OF PUBLIC WORKS & BUILDINGS
DIVISION OF HIGHWAYS

SHEET NO.	SECTION	COUNT	TOTAL SHEETS	SHEET NO.
14 39	14-HB-1	CHAMPAIGN	13	9
F.A. RT. 39-SEC. 14-HB-F-2	CHAMPAIGN	CHAMPAIGN	13	12



MODEL: SHORFMAN; FILE NAME: P:\ILLINOIS\DOT\Documents\DOT - Office\District 5\Projects\0570009\CADD\Structures\0570009_Sst_Repairs.dgn

USER NAME = shawleres	DESIGNED -	REVISED -	
	DRAWN -	REVISED -	
PLOT SCALE = 40.0000' / in.	CHECKED -	REVISED -	
PLOT DATE = 10/24/2017	DATE -	REVISED -	

STATE OF ILLINOIS
DEPARTMENT OF TRANSPORTATION

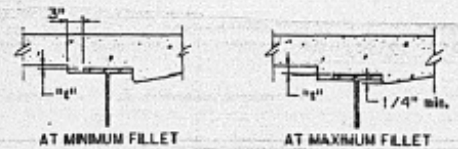
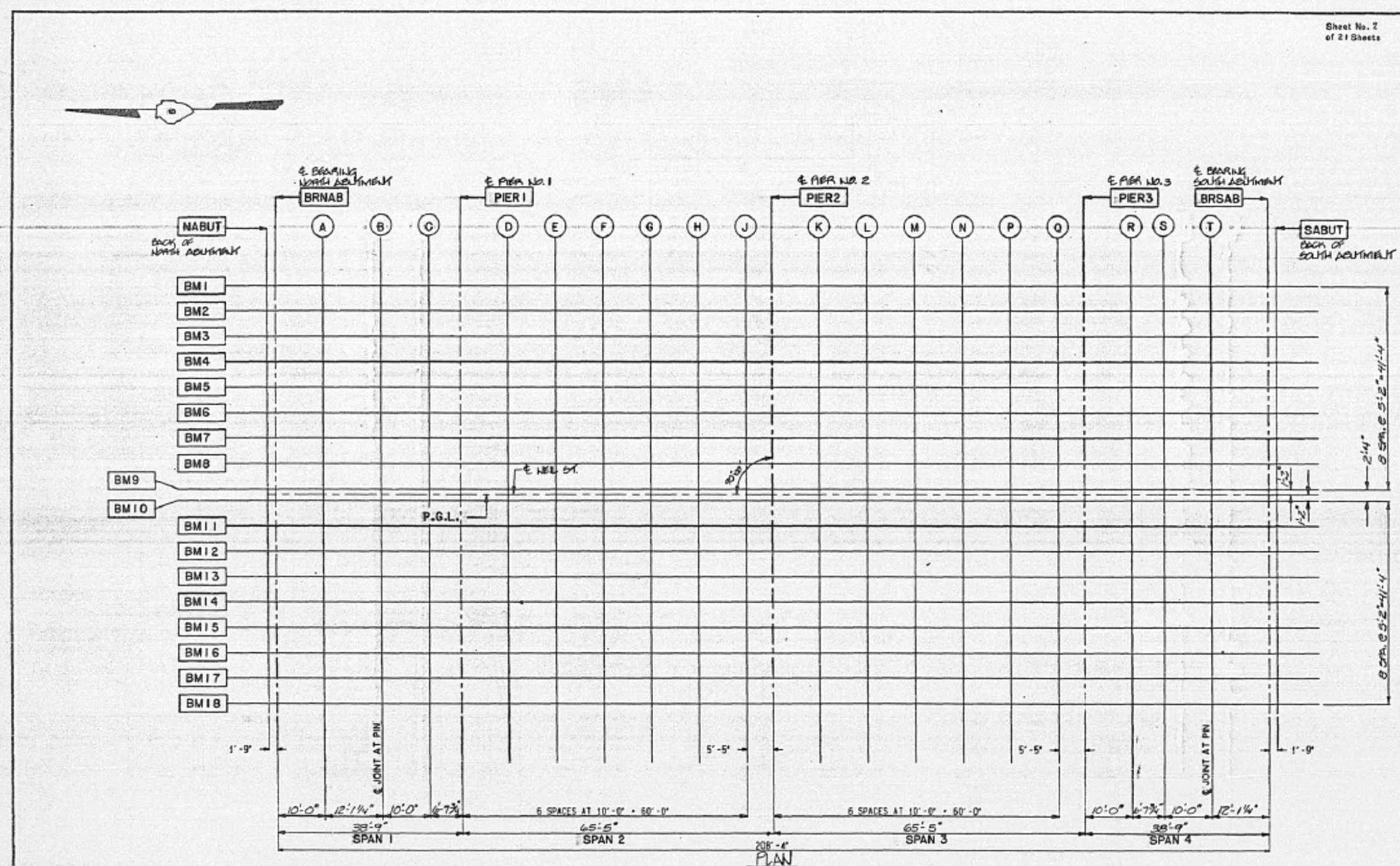
AS-BUILT PLANS		TOTAL SHEETS	SHEET NO.
S.N. 010-0132		13	12
SCALE:	SHEET 9	OF 10 SHEETS	TO STA.

F.A.P. RTE.	SECTION	COUNT	TOTAL SHEETS
802	(14-HB-1)BRR	CHAMPAIGN	13
		CONTRACT NO.	70D09
ILLINOIS FED. AID PROJECT			

AS-BUILT PLANS (1992) FOR INFORMATION ONLY

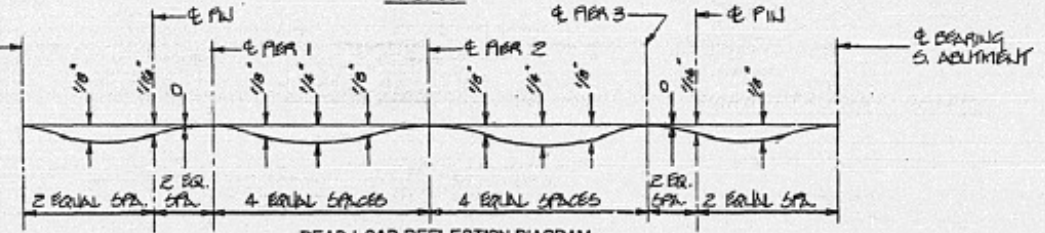
Sheet No. 2
of 21 Sheets

DATE	BY	QUANTITY	TOTAL SHEETS	SHEET NO.
F.A. 74	1190-13	CHAMPAIGN	219	151
FILE NAME: P:\1190\13\CHAMPAIGN\STRUCTURES\70D09_Sht_Repairs.dgn		ILLINOIS	PROJECT	



To determine "c", elevations of the top flanges of the beams shall be taken at intervals shown on Deck Elevation Plan shown above. These elevations subtracted from "Theoretical Grade Elevations Adjusted for Dead Load Deflection" shown on Sheets No. 5+4, minus slab thickness equals the fillet height "c" above top flanges of beams.

FILLET HEIGHTS



DEAD LOAD DEFLECTION DIAGRAM
(Includes weight of concrete only)

REVISIONS		STATE OF ILLINOIS DEPARTMENT OF TRANSPORTATION DIVISION OF HIGHWAYS		PROJECT NO.
1		F.A. 74	SEC. (14HB-1)BRK	3400-4
2		CHAMPAIGN	S.N. 010-0132	COUNTY
		HOMER L. CHASTAIN & ASSOCIATES CONSULTING ENGINEERS		SHEET NO.

MODEL: MODDEF.MAKT; FILE NAME: P:\1190\13\CHAMPAIGN\STRUCTURES\70D09_Sht_Repairs.dgn

USER NAME = shawleres	DESIGNED -	REVISED -
	DRAWN -	REVISED -
PLOT SCALE = 40.0000 ' / in.	CHECKED -	REVISED -
PLOT DATE = 10/24/2017	DATE -	REVISED -

STATE OF ILLINOIS
DEPARTMENT OF TRANSPORTATION

AS-BUILT PLANS
S.N. 010-0132

SCALE: SHEET 10 OF 10 SHEETS STA. TO STA.

F.A.P. RTE.	SECTION	COUNTY	TOTAL SHEETS	SHEET NO.
802	(14-HB-1)BRK	CHAMPAIGN	13	13
CONTRACT NO. 70D09			ILLINOIS FED. AID PROJECT	