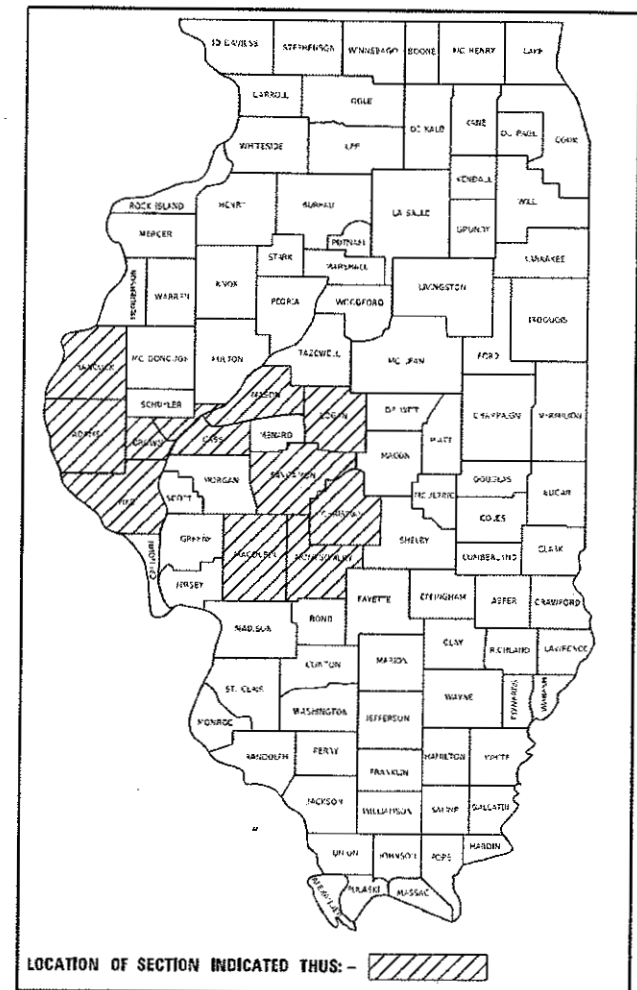


STATE OF ILLINOIS
DEPARTMENT OF TRANSPORTATION

F.A. RTE.	SECTION	COUNTY	TOTAL SHEETS	SHEET NO.
VAR		VARIOUS	33	1
		ILLINOIS	CONTRACT NO. 72K21	

* D6 CROSSWALK IMPROV. 2018

D-96-005-18



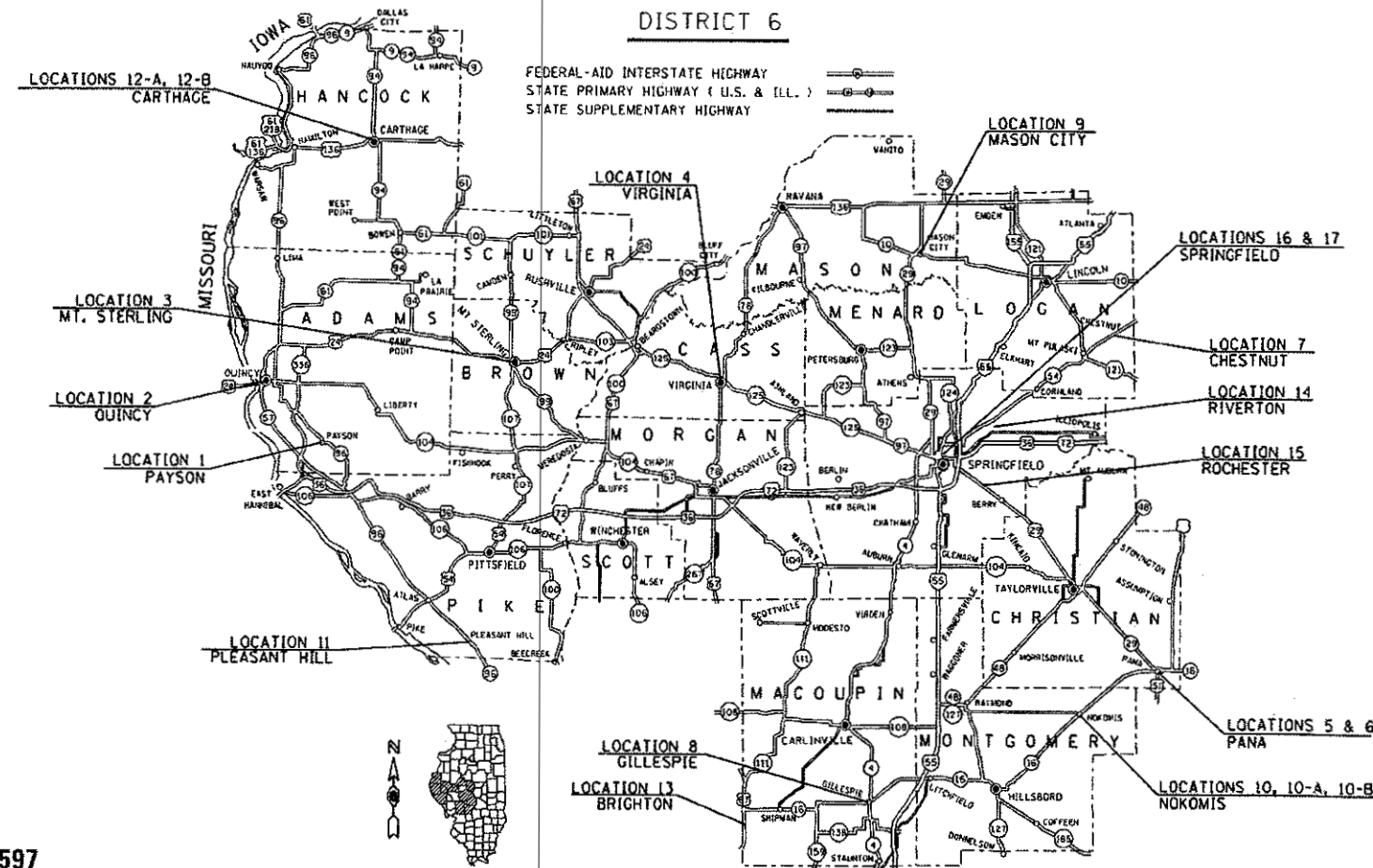
LOCATION OF SECTION INDICATED THUS: - [Hatched Box]

**PROPOSED
HIGHWAY PLANS**

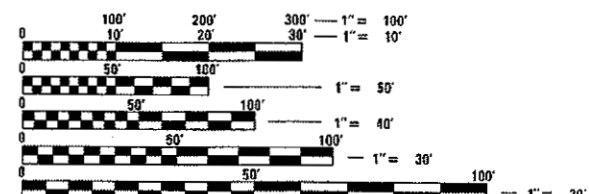
VARIOUS ROUTES
SECTION D6 CROSSWALK IMPROV. 2018
PROJECT HSIP-NMM1(544)
SAFETY CROSSWALK IMPROVEMENTS
VARIOUS COUNTIES

C-96-013-18

DISTRICT 6



FEDERAL-AID INTERSTATE HIGHWAY
STATE PRIMARY HIGHWAY (U.S. & ILL.)
STATE SUPPLEMENTARY HIGHWAY



FULL SIZE PLANS HAVE BEEN PREPARED USING STANDARD ENGINEERING SCALES. REDUCED SIZED PLANS WILL NOT CONFORM TO STANDARD SCALES. IN MAKING MEASUREMENTS ON REDUCED PLANS, THE ABOVE SCALES MAY BE USED.

J.U.L.I.E.
JOINT UTILITY LOCATION INFORMATION FOR EXCAVATION
1-800-892-0123
OR 811

PROJECT ENGINEER JAY EDWARDS (217) 785-0597
PROJECT MANAGER MIKE DODGE (217) 557-9062

CONTRACT NO. 72K21

GROSS LENGTH = NA
NET LENGTH = NA

STATE OF ILLINOIS
DEPARTMENT OF TRANSPORTATION

SUBMITTED February 5 2018
Jeffrey M. South REGIONAL ENGINEER
Mar 23 2018
Paul P. Chaf ENGINEER OF DESIGN AND ENVIRONMENT
Mar 23 2018
DIRECTOR OF HIGHWAYS PROJECT IMPLEMENTATION

PRINTED BY THE AUTHORITY
OF THE STATE OF ILLINOIS

INDEX OF SHEETS

SHEET	DESCRIPTION
1	COVER SHEET
2	GENERAL NOTES, INDEX OF SHEETS, & HIGHWAY STANDARDS
3-5	SUMMARY OF QUANTITIES
6	SCHEDULES OF QUANTITIES
7-10	LOCATION MAPS
11-32	PLAN SHEETS
33	DETAILS

GENERAL NOTES

IN ADDITION TO FIELD SURVEYS AND AERIAL SURVEYS, PLAN DIMENSIONS AND DETAILS RELATIVE TO THE EXISTING FACILITIES HAVE BEEN TAKEN FROM EXISTING PLANS AND ARE SUBJECT TO CONSTRUCTION VARIATIONS. IT SHALL BE THE CONTRACTOR'S RESPONSIBILITY TO VERIFY SUCH DIMENSIONS AND DETAILS IN THE FIELD. SUCH VARIATIONS SHALL NOT BE A CAUSE FOR ADDITIONAL COMPENSATION DUE TO A CHANGE IN THE SCOPE OF THE WORK. HOWEVER, THE CONTRACTOR WILL BE PAID FOR THE QUANTITY ACTUALLY FURNISHED AT THE BID PRICE FOR THE WORK.

ACCESS MUST BE MAINTAINED TO ALL EXISTING PROPERTIES AND SIDE ROADS DURING CONSTRUCTION PER ARTICLE 107.09 UNLESS ARRANGEMENTS ARE MADE IN WRITING BY THE CONTRACTOR WITH THE PROPERTY OWNERS WITH A COPY TO THE ENGINEER FOR SHORT-TERM CLOSURES.

THE CONTRACTOR WILL BE RESPONSIBLE FOR THE TRAFFIC CONTROL DEVICES AT ALL TIMES DURING CONSTRUCTION ACTIVITIES AND SHALL COORDINATE THE ITEMS OF WORK IN ORDER TO KEEP HAZARD TRAFFIC INCONVENIENCES TO A MINIMUM

THE CONTRACTOR SHALL KEEP PUBLIC STREET PAVEMENTS CLEAN OF DIRT AND DEBRIS.

ALL SIGNS SHALL HAVE A PRELIMINARY LAYOUT. SIGN POSTS SHALL BE ADJUSTED SO AS TO MISS ANY SHOULDER DRAINS, INLETS, PIPE CULVERTS, STORM SEWER OR ANY OTHER HAZARD THAT MAY INTERFERE WITH CONSTRUCTION.

PROPOSED LIGHT POLE FOUNDATIONS SHALL BE CONSTRUCTED FLUSH WITH THE PROPOSED FINISHED SURFACE.

THE CONTRACTOR SHALL INSTALL LIGHT POLES AT THE LOCATIONS INDICATED ON THE PLANS, MAINTAINING ADEQUATE CLEARANCE FROM OVERHEAD UTILITY LINES. THE CONTRACTOR SHALL BE RESPONSIBLE FOR VERIFYING CLEARANCES PER THE NATIONAL ELECTRICAL SAFETY CODE AND/OR THE REQUIREMENTS OF THE UTILITY COMPANIES.

THE CONTRACTOR SHALL BE RESPONSIBLE FOR MAINTAINING THE LIGHTING SYSTEM UNTIL IDOT HAS TAKEN ACCEPTANCE OF THE SYSTEM. ALL CIRCUITS AND CABLES TO THE LIGHT POLES SHALL BE MAINTAINED AS NEEDED. THIS WORK WILL NOT BE PAID FOR SEPARATELY, BUT SHALL BE CONSIDERED INCIDENTAL TO THE CONTRACT.

THE CONTRACTOR IS RESPONSIBLE FOR UNCOVERING OR HAND DIGGING AROUND UTILITIES AS NECESSARY.

COMMITMENTS

NONE

HIGHWAY STANDARDS

STANDARD	DESCRIPTION
000001-06	STANDARD SYMBOLS, ABBREVIATIONS AND PATTERNS
001006	DECIMAL OF AN INCH AND OF A FOOT
701006-05	OFF-ROAD OPERATIONS, 2L, 2W, 15' (4.5m) TO 24" (600mm) FROM PAVEMENT EDGE
701201-04	LANE CLOSURE, 2L, 2W, DAY ONLY, FOR SPEEDS \geq 45 MPH
701301-04	LANE CLOSURE, 2L, 2W, SHORT TIME OPERATIONS
701501-06	URBAN LANE CLOSURE, 2L, 2W, UNDIVIDED
701502-08	URBAN LANE CLOSURE, 2L, 2W, WITH BIDIRECTIONAL LEFT TURN LANE
701801-06	SIDEWALK, CORNER OR CROSSWALK CLOSURE
701901-07	TRAFFIC CONTROL DEVICES
720001-01	SIGN PANEL MOUNTING DETAILS
720006-04	SIGN PANEL ERECTION DETAILS
728001-01	TELESCOPING STEEL SIGN SUPPORT
731001-01	BASE FOR TELESCOPING STEEL SIGN SUPPORT
805001-01	ELECTRICAL SERVICE INSTALLATION DETAILS
821101-02	LUMINAIRE WIRING IN POLE
825001-03	LIGHTING CONTROLLER, POLE MOUNTED, 240V
830006-04	LIGHT POLE ALUMINUM DAVIT ARM
836001-03	LIGHT POLE FOUNDATION
838001-01	BREAKAWAY DEVICES

DISTRICT SIX	
EXAMINED	January 26 th 20 18
	<i>John C. Cunningham</i>
OPERATIONS ENGINEER	
EXAMINED	FEB 2 20 18
	<i>Susan J. Drahman</i>
PROJECT IMPLEMENTATION ENGINEER	
EXAMINED	January 26 20 18
	<i>Jerry P. Meyer</i>
PROGRAM DEVELOPMENT ENGINEER	

MODEL: 12e0411
 FILE NAME: \\p1\084EBID\INTEG\Illinois\p1\PM\DOT\Documents\DOT_Offices\District_6\Projects\084EBID\084EBID_Sheets\084EBID_72K21_1-Index_Sheet.dgn

USER NAME = dodgems	DESIGNED -	REVISED -	STATE OF ILLINOIS DEPARTMENT OF TRANSPORTATION	INDEX OF SHEETS / GENERAL NOTES		F.A.* RTE.	SECTION	COUNTY	TOTAL SHEETS	SHEET NO.		
PLOT SCALE = 100.0000' / In.	DRAWN -	REVISED -		SCALE:	SHEET	OF	SHEETS	STA.	TO STA.	VARIOUS	33	2
PLOT DATE = 2/5/2018	CHECKED -	REVISED -										
	DATE -	REVISED -										
ILLINOIS FFD, 410 PROJECT												

SUMMARY OF QUANTITIES

CODE NO.	ITEM	UNIT	TOTAL QUANTITY	CONSTRUCTION CODE		
				90% FED / 10% STATE PPS* 6-60780-1620	100% LOCAL PPS* 6-60780-1620	90% FED / 10% STATE PPS* 6-60780-1630
				VARIOUS COUNTIES SAFETY	QUINCY SAFETY	SPRINGFIELD (SATS) SAFETY
				0021 RURAL	0021 URBAN	0021 URBAN
67100100	MOBILIZATION	L SUM	1.0	0.9		0.1
70100450	TRAFFIC CONTROL AND PROTECTION, STANDARD 701201	L SUM	1.0	0.9		0.1
70102620	TRAFFIC CONTROL AND PROTECTION, STANDARD 701501	L SUM	1.0	0.9		0.1
70102622	TRAFFIC CONTROL AND PROTECTION, STANDARD 701502	L SUM	1.0	0.9		0.1
70102640	TRAFFIC CONTROL AND PROTECTION, STANDARD 701801	L SUM	1.0	0.9		0.1
* 72000100	SIGN PANEL - TYPE 1	SQ FT	60.0	56.0		4.0
* 72400100	REMOVE SIGN PANEL ASSEMBLY - TYPE A	EACH	8.0	8.0		
* 72400200	REMOVE SIGN PANEL ASSEMBLY - TYPE B	EACH	4.0	4.0		
* 72400500	RELOCATE SIGN PANEL ASSEMBLY - TYPE A	EACH	2.0	2.0		
* 72800100	TELESCOPING STEEL SIGN SUPPORT	FOOT	70.0	70.0		
* 73100100	BASE FOR TELESCOPING STEEL SIGN SUPPORT	EACH	4.0	4.0		
* 78000400	THERMOPLASTIC PAVEMENT MARKING - LINE 6"	FOOT	310.0	80.0		230
* 78000600	THERMOPLASTIC PAVEMENT MARKING - LINE 12"	FOOT	165.0			165
80400100	ELECTRIC SERVICE INSTALLATION	EACH	10.0	10.0		

* SPECIALTY ITEM

MODEL: P:\pwr\...
FILE NAME: P:\pwr\...
PROJECT: 1872K21

USER NAME = corse	DESIGNED -	REVISED -
PLOT SCALE = 100.0000' / in.	DRAWN -	REVISED -
PLOT DATE = 2/5/2018	CHECKED -	REVISED -
	DATE -	REVISED -

**STATE OF ILLINOIS
DEPARTMENT OF TRANSPORTATION**

SUMMARY OF QUANTITIES

SCALE: SHEET 1 OF 3 SHEETS STA. TO STA.

F.A.* RTE.	SECTION	COUNTY	TOTAL SHEETS	SHEET NO.
VAR	*	VARIOUS	33	3
		CONTRACT NO. 72K21		
		ILLINOIS FED. AID PROJECT		

*D6 CROSSWALK IMPROV. 2018

SUMMARY OF QUANTITIES

CODE NO.	ITEM	UNIT	TOTAL QUANTITY	CONSTRUCTION CODE		
				90% FED / 10% STATE	100% LOCAL	90% FED / 10% STATE
				PPS* 6-60780-1620	PPS* 6-60780-1620	PPS* 6-60780-1630
				VARIOUS COUNTIES SAFETY 0021 RURAL	QUINCY SAFETY 0021 URBAN	SPRINGFIELD (SATS) SAFETY 0021 URBAN
81028750	UNDERGROUND CONDUIT, COILABLE NONMETALLIC CONDUIT, 2" DIA.	FOOT	1,060.0	1,060.0		
81603010	UNIT DUCT, 600V, 2-1C NO.10, 1/C NO.10 GROUND, (XLP-TYPE USE), 3/4" DIA. POLYETHYLENE	FOOT	1,920.0	1,920.0		
81603040	UNIT DUCT, 600V, 2-1C NO.6, 1/C NO.8 GROUND, (XLP-TYPE USE), 1" DIA. POLYETHYLENE	FOOT	190.0	190.0		
82500300	LIGHTING CONTROLLER, POLE MOUNTED, 240VOLT, 30AMP	EACH	10.0	10.0		
83000015	LIGHT POLE, ALUMINUM, 16 FT. M.H., 10 FT. DAVIT ARM	EACH	2.0	2.0		
83000200	LIGHT POLE, ALUMINUM, 30 FT. M.H., 6 FT. DAVIT ARM	EACH	8.0	8.0		
83000300	LIGHT POLE, ALUMINUM, 30 FT. M.H., 8 FT. DAVIT ARM	EACH	3.0	3.0		
83000400	LIGHT POLE, ALUMINUM, 30 FT. M.H., 10 FT. DAVIT ARM	EACH	3.0	3.0		
83000500	LIGHT POLE, ALUMINUM, 30 FT. M.H., 12 FT. DAVIT ARM	EACH	2.0	2.0		
83000600	LIGHT POLE, ALUMINUM, 30 FT. M.H., 15 FT. DAVIT ARM	EACH	6.0	6.0		
83600352	LIGHT POLE FOUNDATION, METAL, 11 1/2" BOLT CIRCLE, 8 5/8" X 6'	EACH	26.0	26.0		
83800105	BREAKAWAY DEVICE, TRANSFORMER BASE, 11.5 INCH BOLT CIRCLE	EACH	2.0	2.0		
83800650	BREAKAWAY DEVICE, COUPLING WITH STAINLESS STEEL SCREEN	EACH	16.0	16.0		
X0326617	PAINTING LIGHT POLE UNIT	EACH	2.0		2.0	

* DENOTES SPECIAL PROVISION

MODEL: C:\pwr\... FILE NAME: pwr\... PROJECT: 072K21... CONTRACT: 72K21...

USER NAME = coxte	DESIGNED -	REVISED -
	DRAWN -	REVISED -
PLOT SCALE = 100.0000' / in.	CHECKED -	REVISED -
PLOT DATE = 2/5/2018	DATE -	REVISED -

**STATE OF ILLINOIS
DEPARTMENT OF TRANSPORTATION**

SUMMARY OF QUANTITIES

SCALE: SHEET 2 OF 3 SHEETS STA. TO STA.

F.A.* RTE.	SECTION	COUNTY	TOTAL SHEETS	SHEET NO.
VAR	*	VARIOUS	33	4
			CONTRACT NO. 72K21	
ILLINOIS FED. AID PROJECT				

SUMMARY OF QUANTITIES

CODE NO.	ITEM	UNIT	TOTAL QUANTITY	CONSTRUCTION CODE		
				90% FED / 10% STATE	100% LOCAL	90% FED / 10% STATE
				PPS* 6-60780-1620	PPS* 6-60780-1620	PPS* 6-60780-1630
				VARIOUS COUNTIES SAFETY 0021 RURAL	QUINCY SAFETY 0021 URBAN	SPRINGFIELD (SATS) SAFETY 0021 URBAN
X0327979	PAVEMENT MARKING REMOVAL - GRINDING	SQ FT	80.0	80.0		
X1400094	LUMINAIRE, LED, HORIZONTAL MOUNT, LOW WATTAGE	EACH	26.0	26.0		
X1400317	LIGHT POLE, ALUMINUM, 16 FT. M.H., 4 FT. DAVIT ARM	EACH	2.0	2.0		

• DENOTES SPECIAL PROVISION

MODEL: Default
FILE NAME: D:\MILL04\FID\INT\EG_IL\inois.gov\FWD\DOT\Documents\DOT_Offices\Barrick_6\Projects\167242\1\CADD\Drawn\CAD\Drawn\67242-1-sh-500.dgn

USER NAME = caxte	DESIGNED -	REVISED -
	DRAWN -	REVISED -
PLOT SCALE = 100.0000' / in.	CHECKED -	REVISED -
PLOT DATE = 2/5/2018	DATE -	REVISED -

**STATE OF ILLINOIS
DEPARTMENT OF TRANSPORTATION**

SUMMARY OF QUANTITIES			
SCALE:	SHEET 3	OF 3	SHEETS STA. TO STA.

F.A.* RTE.	SECTION	COUNTY	TOTAL SHEETS	SHEET NO.
	*	VARIOUS	33	5
CONTRACT NO. 72K21				
ILLINOIS FED. AID PROJECT				

2

LIGHTING SCHEDULE

LOC.	COUNTY	MUNICIPALITY	LOCATION	80400100	81028750	81603010	81603040	82500300	83000015	83000200	83000300	83000400	83000500	83000600	83600352	83800105	83800650	X0326617	X1400094	
				ELECTRIC SERVICE INSTALLATION	UNDERGROUND CONDUIT, COILABLE NONMETALLIC CONDUIT, 2" DIA.	UNIT DUCT, 600V, 2-1C NO. 10, 1/C NO. 10 GROUND, (XLP-TYPE USE), 3/4" DIA. POLYETHYLENE	UNIT DUCT, 600V, 2-1C NO. 6, 1/C NO. 8 GROUND, (XLP-TYPE USE), 1" DIA. POLYETHYLENE	LIGHTING CONTROLLER, POLE MOUNTED, 240VOLT, 30AMP	LIGHT POLE, ALUMINUM, 16 FT. M.H., 4 FT. DAVIT ARM	LIGHT POLE, ALUMINUM, 16 FT. M.H., 10 FT. DAVIT ARM	LIGHT POLE, ALUMINUM, 30 FT. M.H., 6 FT. DAVIT ARM	LIGHT POLE, ALUMINUM, 30 FT. M.H., 8 FT. DAVIT ARM	LIGHT POLE, ALUMINUM, 30 FT. M.H., 10 FT. DAVIT ARM	LIGHT POLE, ALUMINUM, 30 FT. M.H., 12 FT. DAVIT ARM	LIGHT POLE, ALUMINUM, 30 FT. M.H., 15 FT. DAVIT ARM	LIGHT POLE FOUNDATION, METAL, 11 1/2" BOLT CIRCLE, 8 5/8" X 6'	BREAKAWAY DEVICE, TRANSFORMER BASE, 11.5 INCH BOLT CIRCLE	BREAKAWAY DEVICE, COUPLING WITH STAINLESS STEEL SCREEN	PAINTING LIGHT POLE UNIT	LUMINAIRE, LED, HORIZONTAL MOUNT, LOW WATTAGE
OUTSIDE MPO				EACH	FOOT	FOOT	FOOT	EACH	EACH	EACH	EACH	EACH	EACH	EACH	EACH	EACH	EACH	EACH	EACH	
1	ADAMS	PAYSON	IL96/STATE ST W OF WASHINGTON ST	1.0	56.0	110.0		1.0		2.0					2.0				2.0	
2	ADAMS	QUINCY	IL57/YORK ST AND 4TH ST		160.0		190.0			2.0					2.0			2.0	2.0	
3	BROWN	MT. STERLING	IL99/WASHINGTON ST AND CAMDEN ST	1.0	55.0	195.0		1.0				3.0			3.0				3.0	
4	CASS	VIRGINIA	IL78/MAIN ST AND ILLINI ST	1.0	50.0	85.0		1.0					2.0		2.0				2.0	
5	CHRISTIAN	PANA	IL29/WASHINGTON ST AND POPLAR ST	1.0	145.0	290.0		1.0		2.0					2.0	2.0			2.0	
6	CHRISTIAN	PANA	US51/IL16/1st ST AND SPRUCE ST	1.0	120.0	150.0		1.0		2.0					2.0				2.0	
7	LOGAN	CHESTNUT	IL54 AND DAUPHIN ST	1.0	150.0	385.0		1.0		2.0				2.0	4.0		16.0		4.0	
8	MACOUPIN	GILLESPIE	IL16/BROADWAY ST E OF L.J. AVE	1.0	85.0	145.0		1.0	2.0						2.0				2.0	
9	MASON	MASON CITY	IL10/CHESTNUT ST AND WEST ST	1.0	95.0	195.0		1.0						2.0	2.0				2.0	
10	MONTGOMERY	NOKOMIS	OBERLE ST AND CEDAR ST	1.0	75.0	245.0		1.0			1.0			2.0	3.0				3.0	
11	PIKE	PLEASANT HILL	IL96/QUINCY ST AND BAY ST	1.0	65.0	120.0		1.0			2.0				2.0				2.0	
OUTSIDE MPO TOTALS				10.0	1,056.0	1,920.0	190.0	10.0	2.0	2.0	8.0	3.0	3.0	2.0	6.0	26.0	2.0	16.0	2.0	26.0
USE				10.0	1,060.0	1,920.0	190.0	10.0	2.0	2.0	8.0	3.0	3.0	2.0	6.0	26.0	2.0	16.0	2.0	26.0

SIGN SCHEDULE

LOCATION NUMBER	COUNTY	MUNICIPALITY	LOCATION	DESCRIPTION	72000100				72400100	72400200	72400500	72800100	73100100
					SIGN PANEL - TYPE 1				REMOVE SIGN PANEL ASSEMBLY - TYPE A	REMOVE SIGN PANEL ASSEMBLY - TYPE B	RELOCATE SIGN PANEL ASSEMBLY - TYPE A	TELESCOPING STEEL SIGN SUPPORT	BASE FOR TELESCOPING STEEL SIGN SUPPORT
					W11-2	W16-9P	W16-7P(L)	RS PANEL	EACH	EACH	EACH	FOOT	EACH
					SO FT	SO FT	SO FT	SO FT					
OUTSIDE MPO													
4	CASS	VIRGINIA	IL78/MAIN ST. & ILLINI ST.	NB SIGN AT CROSSWALK			2.2	1.2					
4	CASS	VIRGINIA	IL78/MAIN ST. & ILLINI ST.	SB SIGN AT CROSSWALK			2.2	1.2					
4	CASS	VIRGINIA	IL78/MAIN ST. & ILLINI ST.	NB ADVANCED WARNING SIGN		2.0		1.2					
4	CASS	VIRGINIA	IL78/MAIN ST. & ILLINI ST.	SB ADVANCED WARNING SIGN		2.0		1.2					
8	MACOUPIN	GILLESPIE	IL16/BROADWAY ST.	EB & WB SIGN AT CROSSWALK						2.0			
10-A	CHRISTIAN	NOKOMIS	IL16/STATE ST & PINE ST	NB & SB SIGN AT CROSSWALK	12.6		4.4	2.4					
10-B	CHRISTIAN	NOKOMIS	IL16/STATE ST & MAPLE ST	SB SIGN AT CROSSWALK	6.3		2.2	1.2					
11	PIKE	PLEASANT HILL	IL96/QUINCY ST & BAY ST.	EB SIGN AT CROSSWALK			2.2	1.2	1.0			17.0	1.0
11	PIKE	PLEASANT HILL	IL96/QUINCY ST & BAY ST.	WB SIGN AT CROSSWALK			2.2	1.2	1.0			17.0	1.0
11	PIKE	PLEASANT HILL	IL96/QUINCY ST & BAY ST.	EB ADVANCED WARNING SIGN		2.0		1.2	1.0			17.0	1.0
11	PIKE	PLEASANT HILL	IL96/QUINCY ST & BAY ST.	WB ADVANCED WARNING SIGN		2.0		1.2	1.0			17.0	1.0
12-A	HANCOCK	CARTHAGE	US136/BUCHANAN ST W OF PRAIRIE ST	REMOVE BIKE CROSSING SIGNS					4.0				
13	MACOUPIN	BRIGHTON	IL111/IL267/MAPLE ST S OF VINE ST	REMOVE CROSSING SIGNS						4.0			
SUB-TOTALS					18.9	8.0	15.4	13.2					
OUTSIDE MPO TOTAL							55.5		8.0	4.0	2.0	68.0	4.0
USE							56.0		8.0	4.0	2.0	70.0	4.0
INSIDE MPO													
14	SANGAMON	RIVERTON	LINCOLN ST & 9TH ST	EB - ADD DOWN ARROW PLAQUE			2.2	1.2					
SUB-TOTALS					0.0	0.0	2.2	1.2					
INSIDE MPO TOTAL							3.4		0.0	0.0	0.0	0.0	0.0
USE							4.0		0.0	0.0	0.0	0.0	0.0
COMBINED TOTALS							60.0		8.0	4.0	2.0	70.0	4.0

*RE-USE S1-1 SIGNS

PAVEMENT MARKING SCHEDULE

LOC. NUMBER	COUNTY	MUNICIPALITY	LOCATION	DESCRIPTION	78000400	78000600	X0327979
					THERMOPLASTIC PAVEMENT MARKING LINE - 6"	THERMOPLASTIC PAVEMENT MARKING LINE - 12"	PAVEMENT MARKING REMOVAL - GRINDING
					FOOT	FOOT	SO FT
OUTSIDE MPO							
12-B	HANCOCK	CARTHAGE	US136/IL94/BUCHANAN ST W OF WASHINGTON ST	ADD TRANSVERSE PMK LINES AT MID-BLOCK CROSSING	80.0		
13	MACOUPIN	BRIGHTON	IL111/IL267/MAPLE ST S OF VINE ST	REMOVE CROSSWALK PMK LINES			80.0
OUTSIDE MPO TOTAL					80.0	0.0	80.0
INSIDE MPO							
15	SANGAMON	ROCHESTER	IL29 & TAFT DR	ADD TRANSVERSE PMK LINES AT BIKE/PED CROSSING	134.0		
16	SANGAMON	SPRINGFIELD	WALNUT ST & ELLIOT AVE	ADD 12" LONGITUDINAL PMK LINES TO CROSSING, N & S LEGS		162.0	
17	SANGAMON	SPRINGFIELD	IL97/JEFERSON ST E OF 7TH ST	ADD TRANSVERSE PMK LINES AT MID-BLOCK CROSSING	94.0		
INSIDE MPO TOTAL					228.0	162.0	0.0
USE					230.0	165.0	0.0
COMBINED TOTALS					310.0	165.0	80.0

MODEL: Default
FILE: \\s:\p\1108\B&E\ID\ITC\Illinois\gov\p\1108\DOT\Documents\DOT_Offices\DOT\DOT\Projects\0672621\CADData\CAD\sheet\0672621_rfb-schedule.dgn

USER NAME = coxte	DESIGNED -	REVISED -
	DRAWN -	REVISED -
PLOT SCALE = 100,0000' / in.	CHECKED -	REVISED -
PLOT DATE = 2/5/2018	DATE -	REVISED -

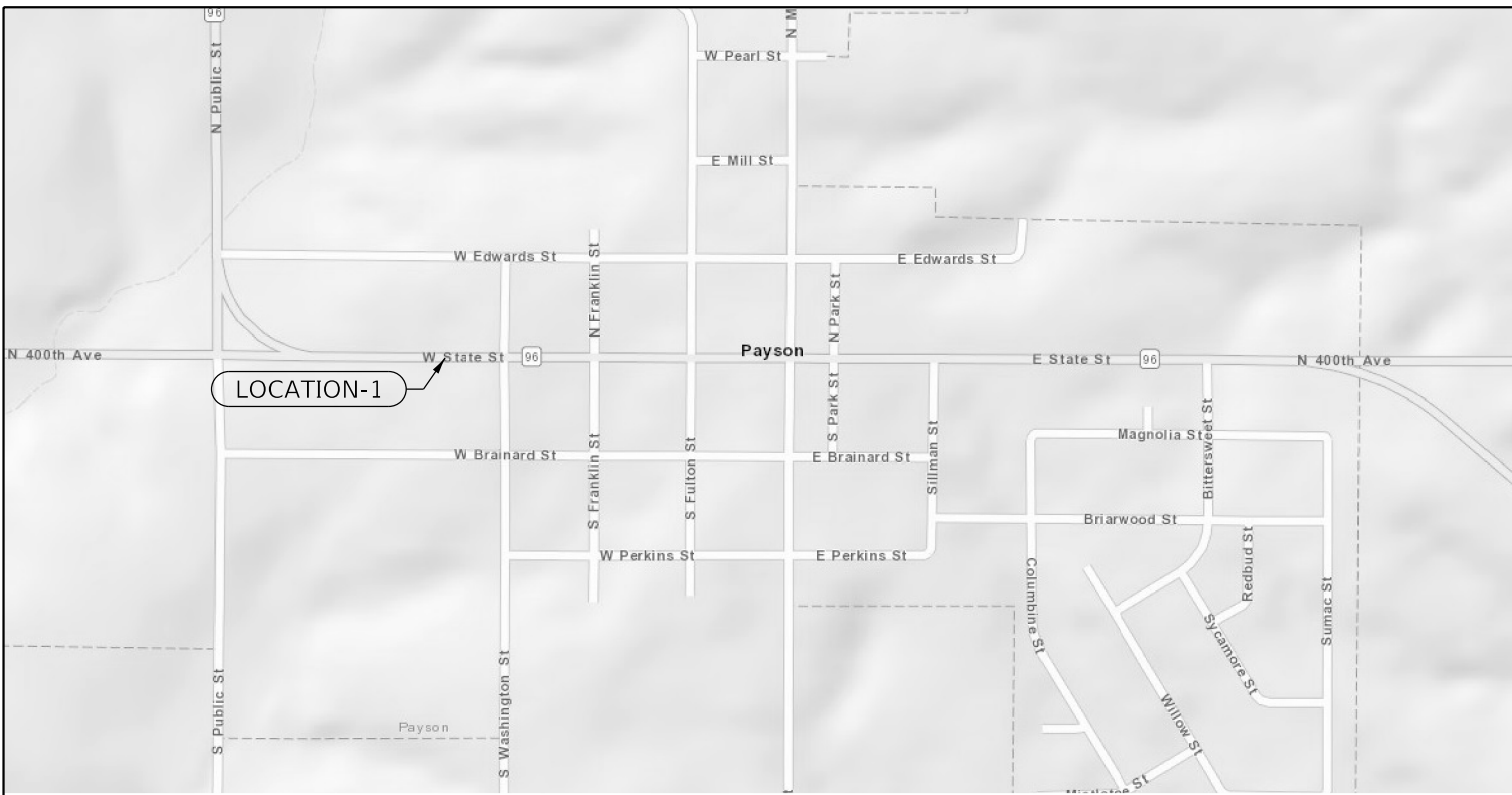
STATE OF ILLINOIS
DEPARTMENT OF TRANSPORTATION

SCHEDULE OF QUANTITIES

SCALE:	SHEET	OF	SHEETS	STA.	TO	STA.
--------	-------	----	--------	------	----	------

F.A.* RTE.	SECTION	COUNTY	TOTAL SHEETS	SHEET NO.
VAR	*	VARIOUS	33	6
			CONTRACT NO. 72K21	
ILLINOIS FED. AID PROJECT				

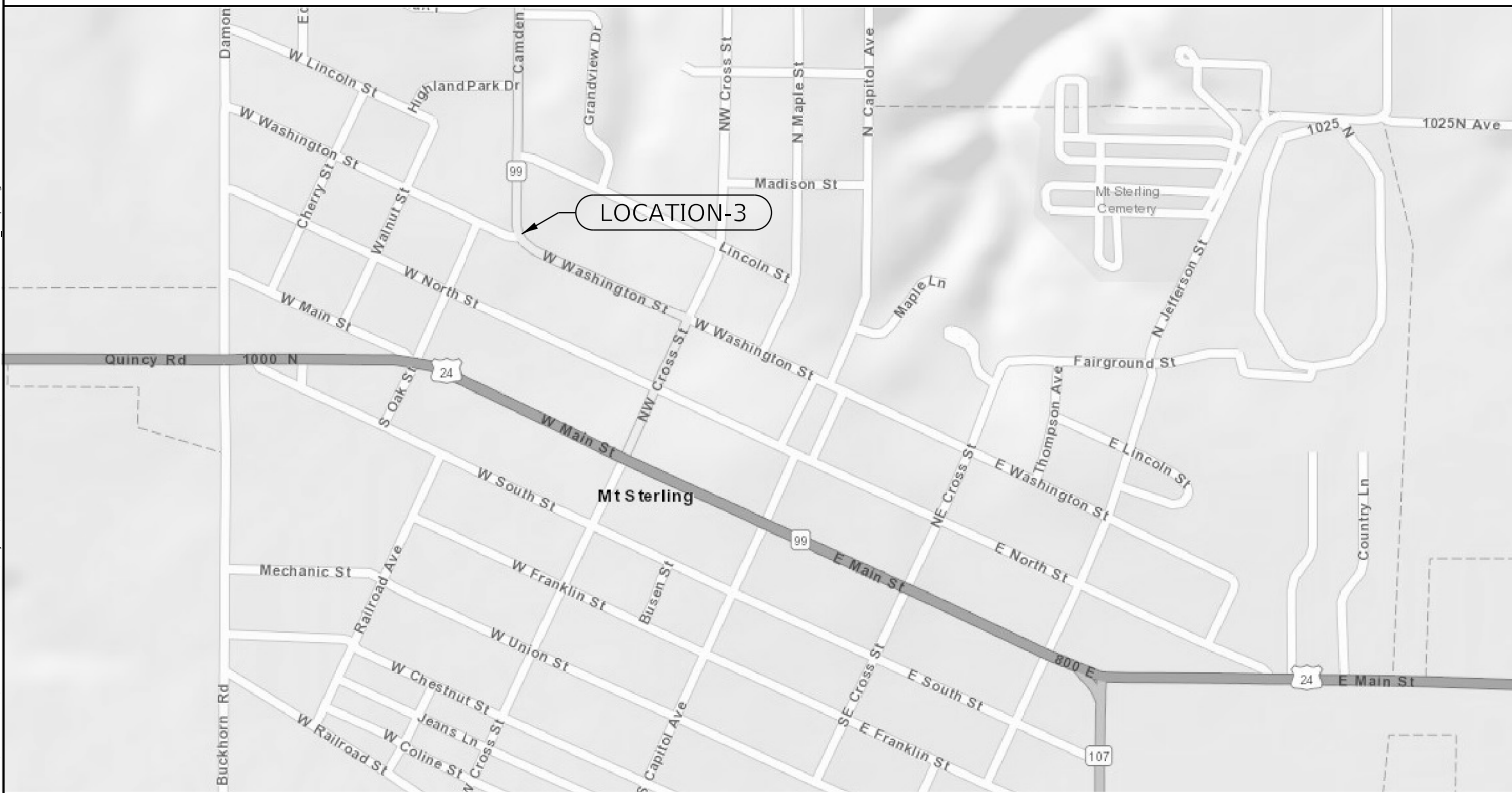
*D6 CROSSWALK IMPROV. 2018



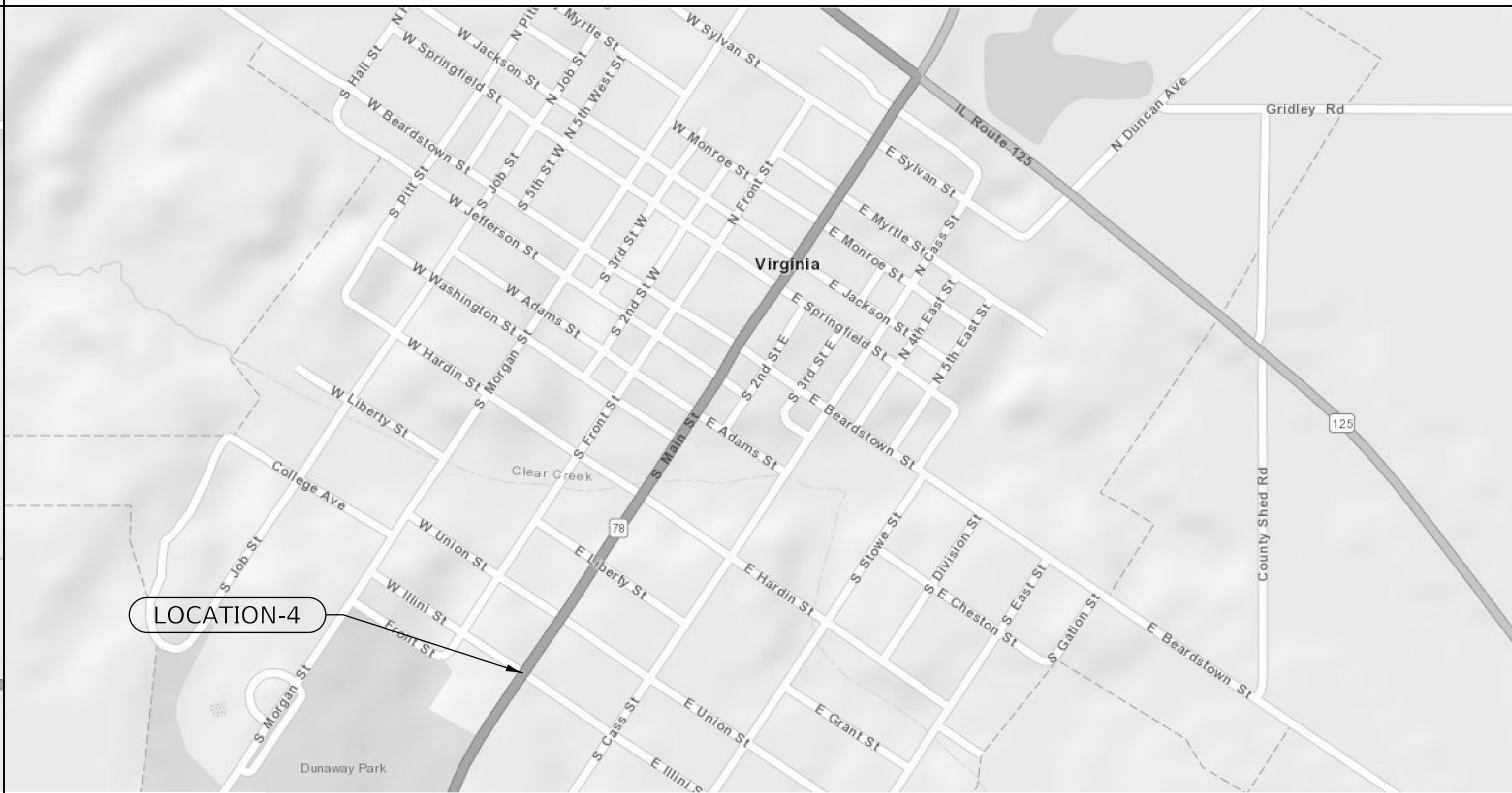
LOCATION 1
PAYSON - ADAMS COUNTY



LOCATION 2
QUINCY - ADAMS COUNTY



LOCATION 3
MT. STERLING - BROWN COUNTY



LOCATION 4
***VIRGINIA - CASS COUNTY**

*SEE PLAN SHEET FOR SIGN SCHEDULE

MODEL: Default
FILE: \\nas01\p01\GIS\BROWNS\ITC\Illinois\gov\p01\DOT\Documents\DOT_Offices\Director\Projects\0672K21\CAD\DATA\CAD\Sheet\0672K21-Loc-Location_maps.dgn

USER NAME = coxte	DESIGNED -	REVISED -
	DRAWN -	REVISED -
PLOT SCALE = 40,0000 ' / in.	CHECKED -	REVISED -
PLOT DATE = 2/5/2018	DATE -	REVISED -

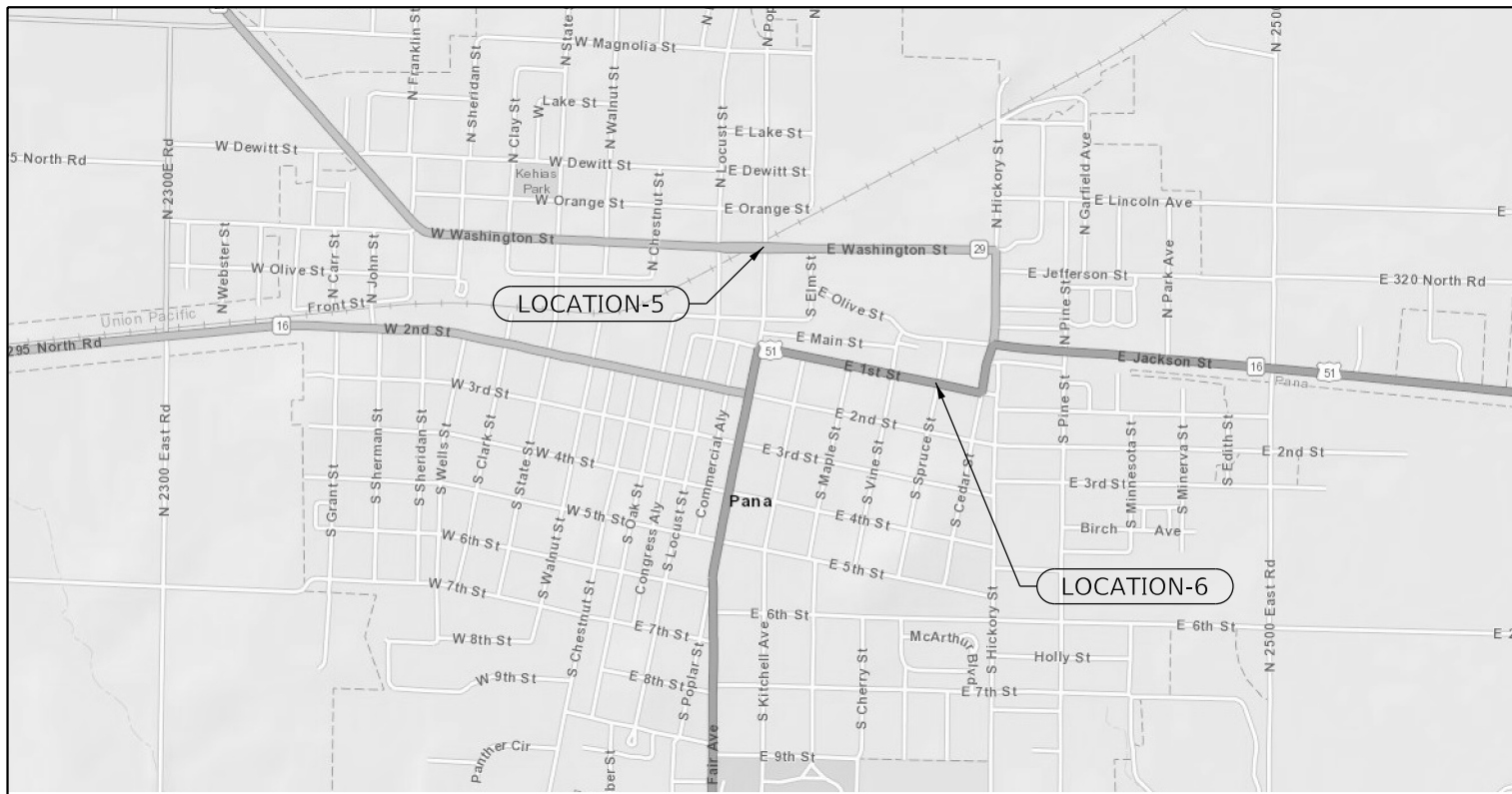
STATE OF ILLINOIS
DEPARTMENT OF TRANSPORTATION

LOCATION MAPS

SCALE: SHEET 1 OF 4 SHEETS STA. TO STA.

F.A.* RTE.	SECTION	COUNTY	TOTAL SHEETS	SHEET NO.
VAR	*	VARIOUS	33	7
CONTRACT NO. 72K21				

*D6 CROSSWALK IMPROV. 2018



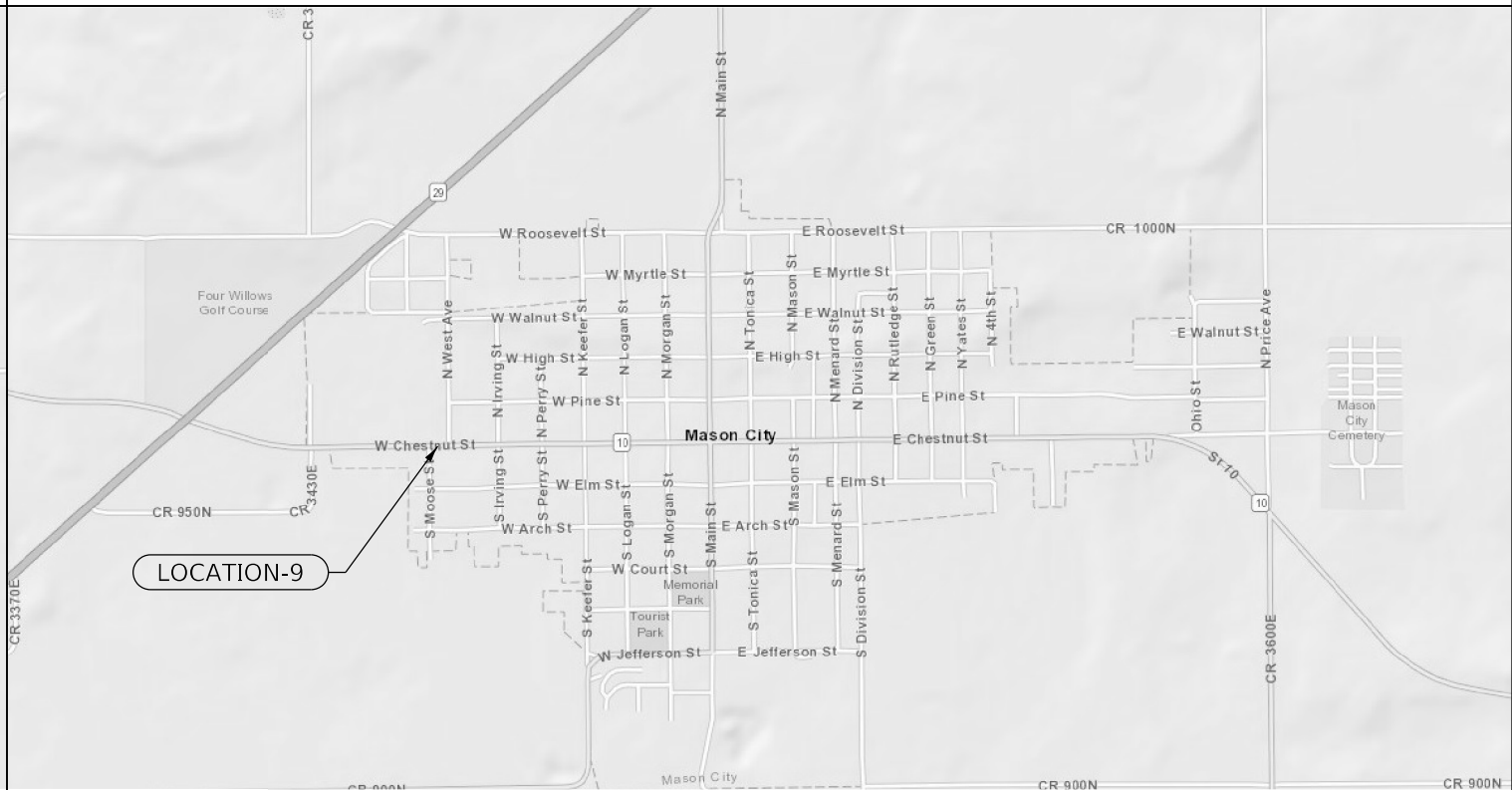
LOCATIONS 5 & 6
PANA - CHRISTIAN COUNTY



LOCATION 7
CHESTNUT - LOGAN COUNTY



LOCATION 8
GILLESPIE - MACOUPIN COUNTY



LOCATION 9
MASON CITY - MASON COUNTY

MODEL: Default
FILE: \\nas01\paul\B&E\IDNT\EG_IL\work\pov\RIDDOT\Documents\DOT_Offices\Director\Projects\0672K21\Cadd\Map\CAD\Sheet\0672K21-1-1b-location_maps.dgn

USER NAME = coxte	DESIGNED -	REVISED -
	DRAWN -	REVISED -
PLOT SCALE = 40,0000' / in.	CHECKED -	REVISED -
PLOT DATE = 2/5/2018	DATE -	REVISED -

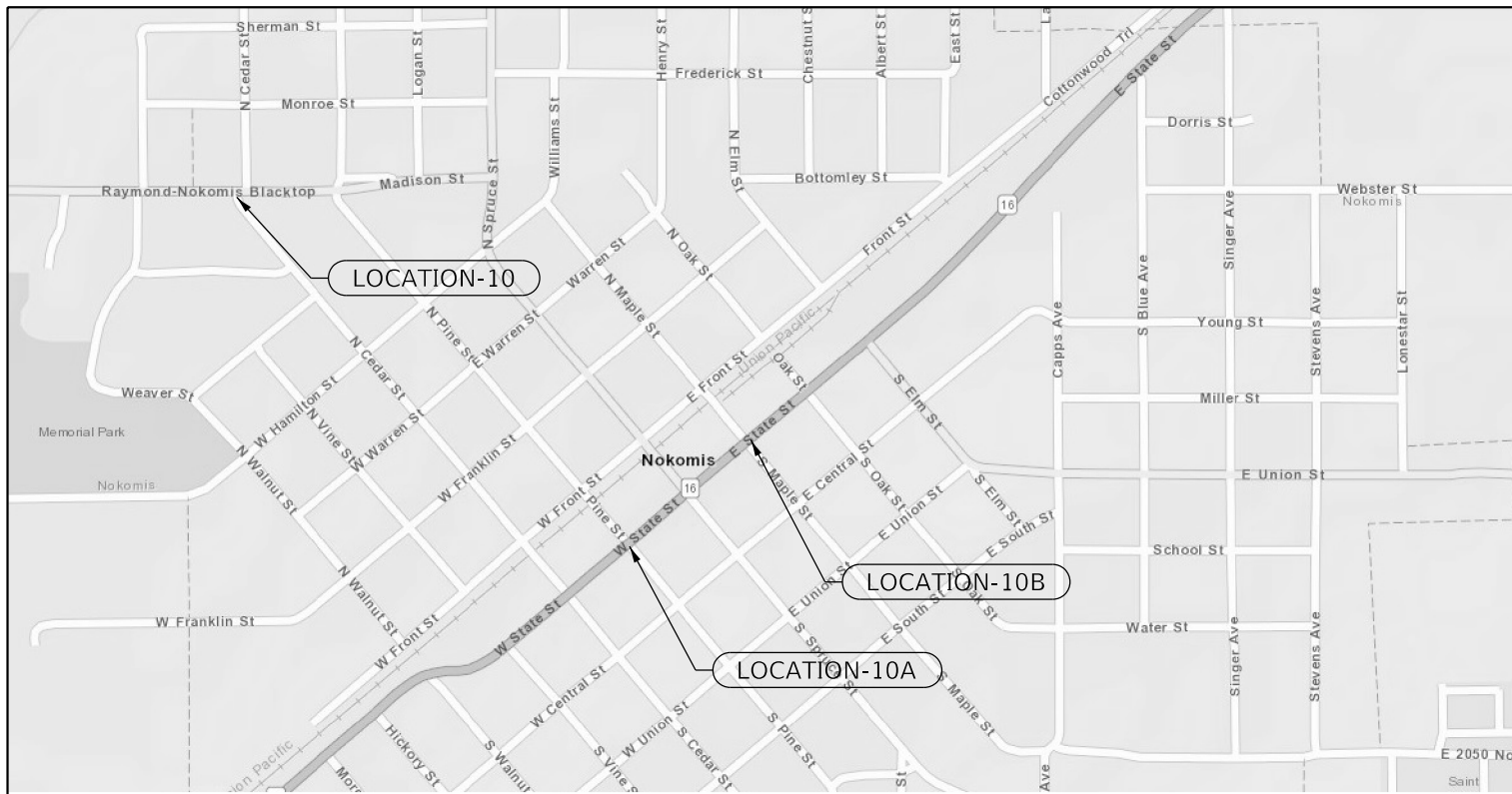
STATE OF ILLINOIS
DEPARTMENT OF TRANSPORTATION

LOCATION MAPS

SCALE: SHEET 2 OF 4 SHEETS STA. TO STA.

F.A.* RTE.	SECTION	COUNTY	TOTAL SHEETS	SHEET NO.
VAR	*	VARIOUS	33	8
CONTRACT NO. 72K21				
ILLINOIS FED. AID PROJECT				

*D6 CROSSWALK IMPROV. 2018



LOCATION-10

LOCATION-10B

LOCATION-10A

LOCATION 10

***NOKOMIS - MONTGOMERY COUNTY**

*SEE PLAN SHEET FOR SIGN SCHEDULE



LOCATION-11

LOCATION 11

***PLEASANT HILL - PIKE COUNTY**

*SEE PLAN SHEET FOR SIGN SCHEDULE



LOCATION-12A

LOCATION-12B

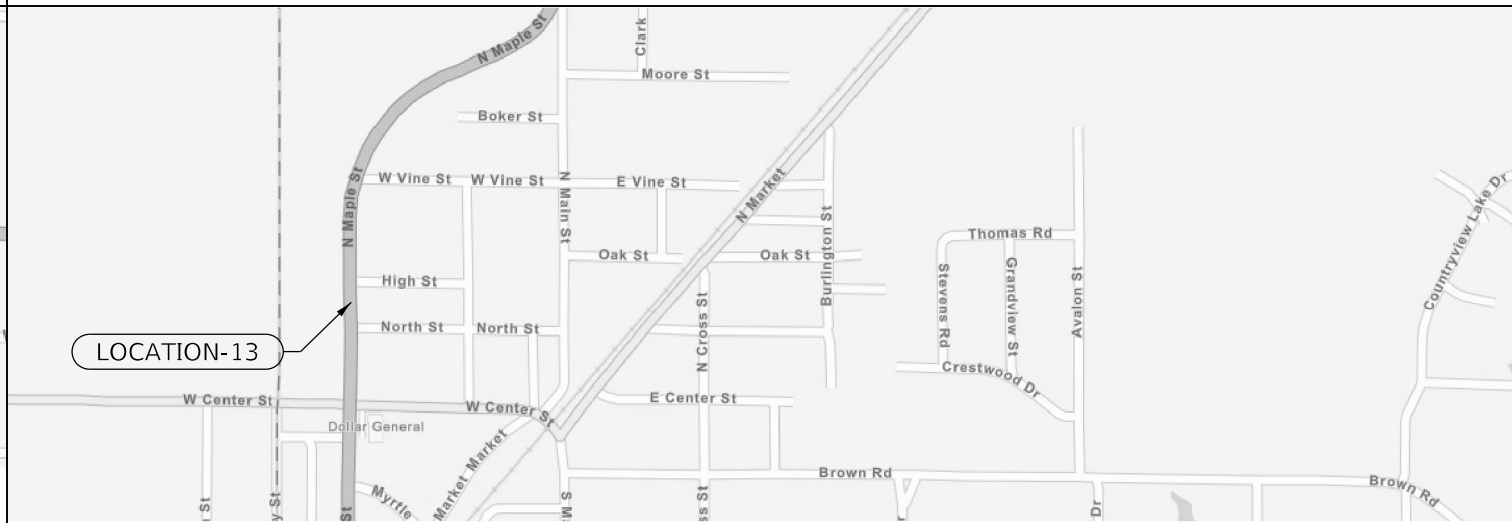
LOCATION 12

****CARTHAGE - HANCOCK COUNTY**

BILL OF MATERIALS - CARTHAGE (SIGNING & STRIPING)		
LOCATION	72400100 REMOVE SIGN PANEL ASSEMBLY - TYPE A EACH	78000400 THERMOPLASTIC PAVEMENT MARKING - LINE 6" FOOT
*12-A: US136/BUCHANAN ST W OF PRAIRIE ST	4.0	
*12-B: US136/BUCHANAN ST W OF WASHINGTON ST		80.0

- REMOVE BIKE PATH CROSSING SIGNAGE
- ADD TRANSVERSE PAVEMENT MARKING LINES TO EXISTING CROSSWALK

**NO PLAN SHEET FOR THIS LOCATION



LOCATION-13

LOCATION 13

****BRIGHTON - MACOUPIN COUNTY**

BILL OF MATERIALS - BRIGHTON (SIGNING & STRIPING)		
LOCATION	72400200 REMOVE SIGN PANEL ASSEMBLY - TYPE B EACH	78300100 PAVEMENT MARKING REMOVAL SQ FT
*IL111/IL267/MAPLE ST S OF VINE ST	4.0	80.0

- REMOVE CROSSWALK AND SIGNAGE

**NO PLAN SHEET FOR THIS LOCATION

MODEL: Default
FILE: \Maple_Prairie\BRIGHTON\TEC\Illinois\gov\pvid\DOT\Documents\DOT_Offices\Director_@Project\0672621_CAD\data\CADsheets\0672621_rfb-location_maps.dgn

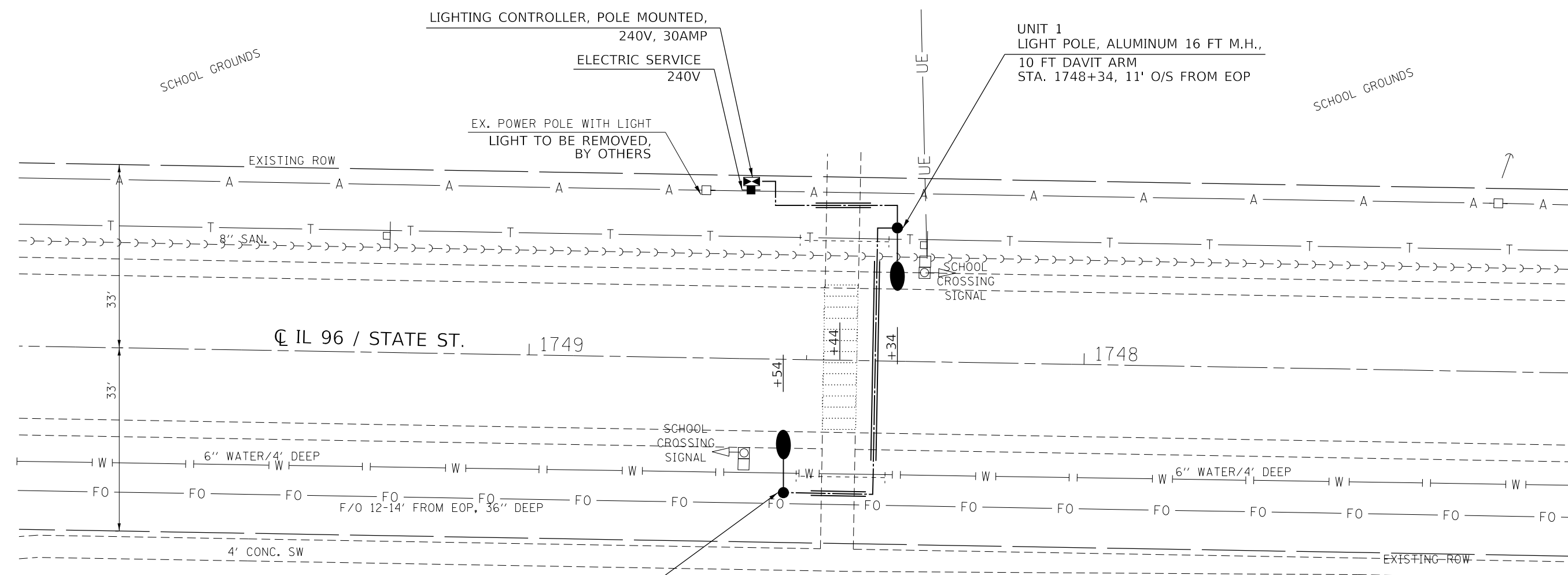
USER NAME = coxte	DESIGNED -	REVISED -
PLOT SCALE = 40.0000' / in.	DRAWN -	REVISED -
PLOT DATE = 2/5/2018	CHECKED -	REVISED -
	DATE -	REVISED -

**STATE OF ILLINOIS
DEPARTMENT OF TRANSPORTATION**

LOCATION MAPS			
SCALE:	SHEET 3 OF 4 SHEETS	STA.	TO STA.

F.A.* RTE.	SECTION	COUNTY	TOTAL SHEETS	SHEET NO.
	*	VARIOUS	33	9
CONTRACT NO. 72K21				
ILLINOIS FED. AID PROJECT				

*D6 CROSSWALK IMPROV. 2018

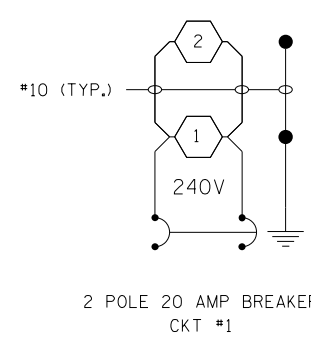


UNIT 2
LIGHT POLE, ALUMINUM 16 FT M.H.,
10 FT DAVIT ARM
STA. 1748+54, 11' O/S FROM EOP

CONC.
BLOCK
BLDG.

LEGEND

- ===== UNDERGROUND CONDUIT, COILABLE
NONMETALLIC CONDUIT, 2" DIA.
- UNIT DUCT, 600V, 2-1C NO. 10, 1/C NO. 10 GROUND,
(XLP-TYPE USE), 3/4" DIA. POLYETHYLENE



LIGHTING CONTROLLER
POLE MOUNT, 240V, 30AMP

WIRING DIAGRAM

NOTES:

1. ALL NECESSARY REVISIONS TO THE WIRING SHOWN ON THIS SHEET SHALL BE MADE AT NO ADDITIONAL COST TO THE DEPARTMENT AND TO THE SATISFACTION OF THE ENGINEER.

- PROPOSED LED LUMINAIRE
- GROUND ROD

BILL OF MATERIALS - PAYSON			
PAY ITEM	DESCRIPTION	UNIT	QUANTITY
80400100	ELECTRIC SERVICE INSTALLATION	EACH	1.0
81028750	UNDERGROUND CONDUIT, COILABLE NONMETALLIC CONDUIT, 2" DIA.	FOOT	56.0
81603010	UNIT DUCT, 600V, 2-1C NO. 10, 1/C NO. 10 GROUND, (XLP-TYPE USE), 3/4" DIA. POLYETHYLENE	FOOT	110.0
82500300	LIGHTING CONTROLLER, POLE MOUNTED, 240VOLT, 30AMP	EACH	1.0
83000015	LIGHT POLE, ALUMINUM, 16 FT. M.H., 10 FT. DAVIT ARM	EACH	2.0
83600352	LIGHT POLE FOUNDATION, METAL, 11 1/2" BOLT CIRCLE, 8 5/8" X 6'	EACH	2.0
X1400094	LUMINAIRE, LED, HORIZONTAL MOUNT, LOW WATTAGE	EACH	2.0

LOCATION 1

MODEL: Default FILE: \\mspc-pw\ulb\B&E\ID\TCE\Illinois\pwr\p\DOT\Documents\1\DOT - Office\1\17421\1\CAD\data\CAD\sheet\0672K21-left-plan-payson.dgn	USER NAME = coxte	DESIGNED -	REVISED -	STATE OF ILLINOIS DEPARTMENT OF TRANSPORTATION	PAYSON - ADAMS COUNTY PLAN SHEET	F.A.* RTE.	SECTION	COUNTY	TOTAL SHEETS	SHEET NO.
	PLOT SCALE = 20,0000' / in.	CHECKED -	REVISED -			VAR	*	VARIOUS	33	11
PLOT DATE = 2/5/2018	DATE -	REVISED -	REVISED -	SCALE:	SHEET 1 OF 2 SHEETS	STA.	TO STA.	ILLINOIS FED. AID PROJECT		

*D6 CROSSWALK IMPROV. 2018

IL ROUTE 96
SECTION:
DISTRICT 6
VARIOUS COUNTY

**ILLINOIS DEPARTMENT OF TRANSPORTATION
LUMINAIRE PERFORMANCE TABLE**
Major - High

GIVEN CONDITIONS		
ROADWAY DATA	Lane Width	12 ft
	Number of Lanes (in each direction)	1
	Median Width	0 ft
	I.E.S. Surface Classification	R3
	Q-Zero Value	.07
LIGHT POLE DATA	Mounting Height	16 ft
	Mast Arm Length	1 0 ft
	Pole Set-Back From Edge of Pavement	1 1 ft
LUMINAIRE DATA	Luminaire Type	LED
	I.E.S. Vertical Distribution	Medium
	BUG Rating	U = 0
	I.E.S. Lateral Distribution	Type IV
	Lumen Depreciation	0.90
	Dirt Depreciation	0.80
	Equipment Factor	0.95
Total Light Loss Factor	0.684	
LAYOUT DATA	Spacing	100 ft
	Configuration	Staggered

- NOTES:**
- Variations from the above specified I.E.S. distribution pattern may be requested and acceptance of variations will be subject to review by the Engineer based on how well the performance requirements are met.
 - A Lumen Depreciation value greater than 0.90 for LED light sources shall be based upon I.E.S. LM-80 or I.E.S. LM-84 and I.E.S. TM-21 test reports.



PERFORMANCE REQUIREMENTS		
NOTE: These performance requirements shall be the minimum acceptable standards of photometric performance for the luminaire, based on the given conditions listed above.		
LUMINANCE	Average Luminance, L_{AVE}	1.2 Cd/m ²
	Uniformity Ratio, L_{AVE}/L_{MIN}	3.0:1
	Uniformity Ratio, L_{MAX}/L_{MIN}	5.0:1
	Max. Veiling Luminance Ratio, L_V/L_{AVE}	0.3:1

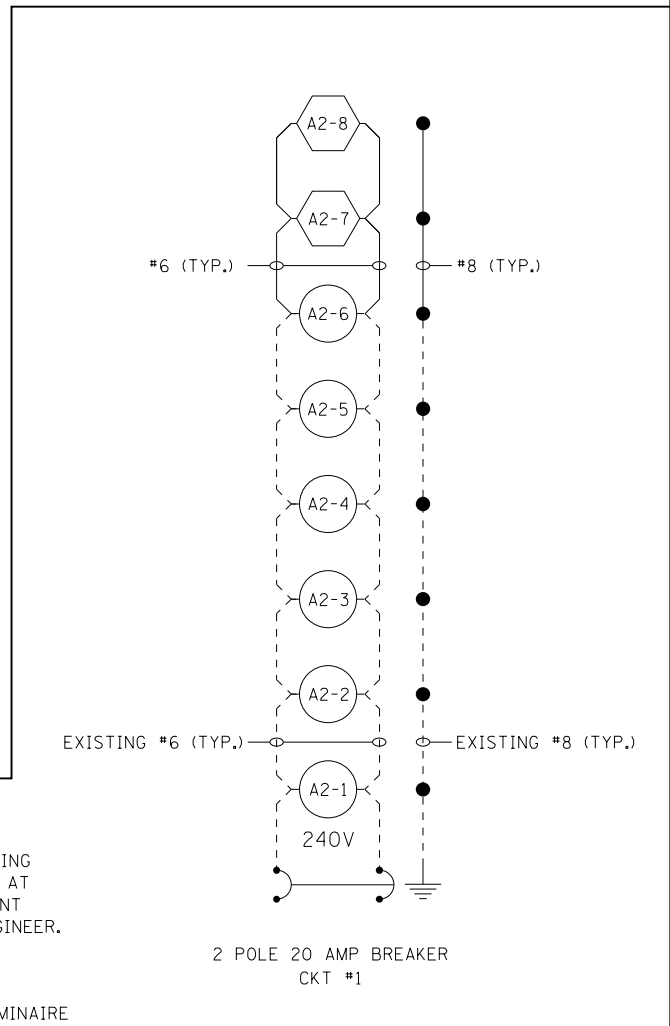
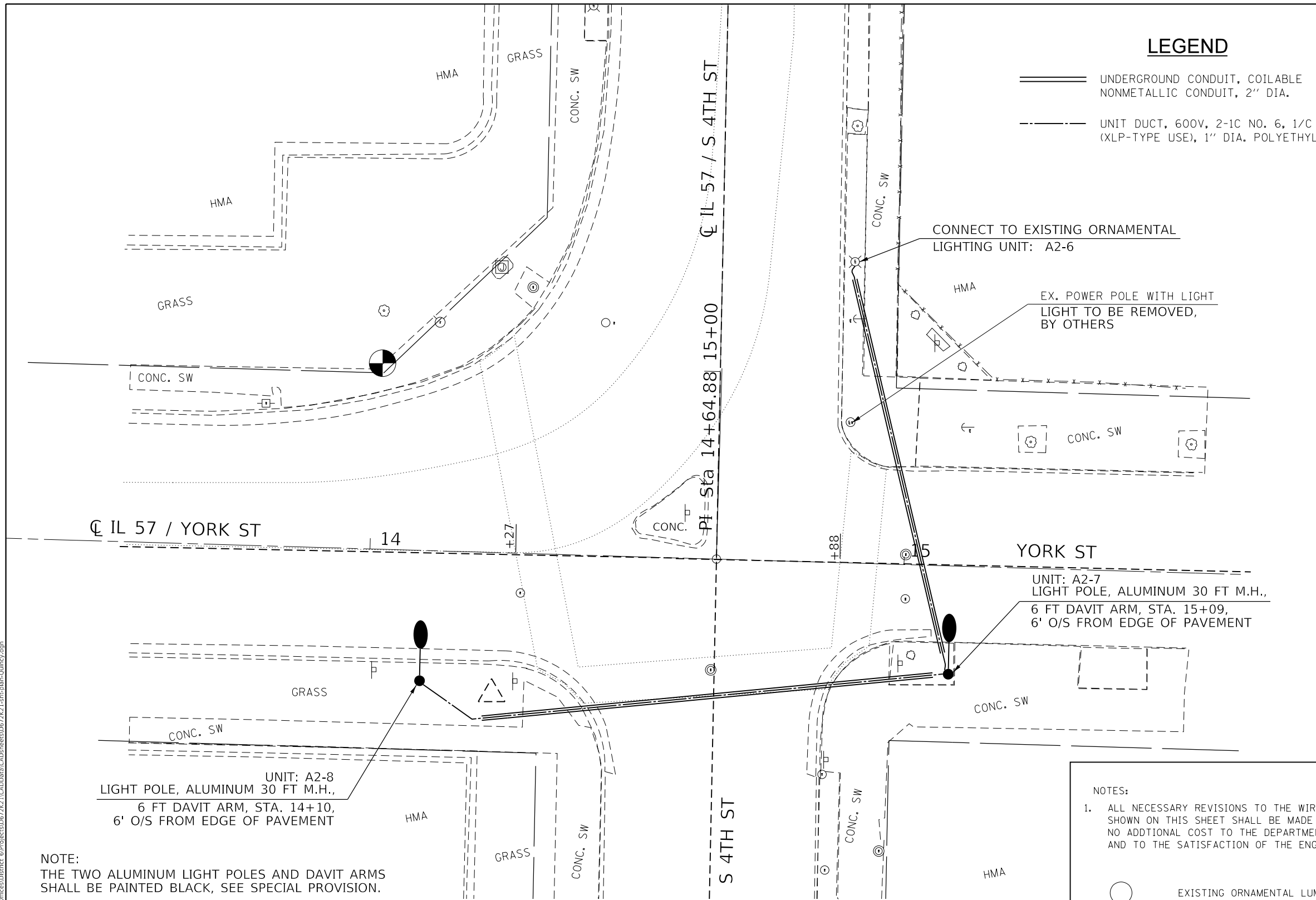
LOCATION 1

MODEL: Default
FILE: \\mhc-pw\ill08\BEBID\NTEC\Illinois\gov\PIWDOT\Documents\DOT_Offices\District 6\Projects\0672K21\CADD\DATA\CAD\Sheet\0672K21_LumPerf.dgn


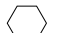



USER NAME = coxte	DESIGNED -	REVISED -	STATE OF ILLINOIS DEPARTMENT OF TRANSPORTATION	PAYSON - ADAMS COUNTY LUMINAIRE PERFORMANCE TABLE	F.A.* RTE.	SECTION	COUNTY	TOTAL SHEETS	SHEET NO.	
PLOT SCALE = 20,0000 ' / in.	DRAWN -	REVISED -			VAR	*	VARIOUS	33	12	
PLOT DATE = 2/5/2018	CHECKED -	REVISED -			SCALE:	SHEET 2 OF 2 SHEETS	STA.	TO STA.	ILLINOIS FED. AID PROJECT	
	DATE -	REVISED -			*D6 CROSSWALK IMPROV. 2018					

LEGEND

-  UNDERGROUND CONDUIT, COILABLE NONMETALLIC CONDUIT, 2" DIA.
-  UNIT DUCT, 600V, 2-1C NO. 6, 1/C NO. 8 GROUND, (XLP-TYPE USE), 1" DIA. POLYETHYLENE



- NOTES:
- ALL NECESSARY REVISIONS TO THE WIRING SHOWN ON THIS SHEET SHALL BE MADE AT NO ADDITIONAL COST TO THE DEPARTMENT AND TO THE SATISFACTION OF THE ENGINEER.

-  EXISTING ORNAMENTAL LUMINAIRE
-  PROPOSED LED LUMINAIRE
-  EXISTING UNIT DUCT
-  PROPOSED UNIT DUCT
-  GROUND ROD

NOTE:
THE TWO ALUMINUM LIGHT POLES AND DAVIT ARMS SHALL BE PAINTED BLACK, SEE SPECIAL PROVISION.

BILL OF MATERIALS - QUINCY			
PAY ITEM	DESCRIPTION	UNIT	QUANTITY
81028750	UNDERGROUND CONDUIT, COILABLE NONMETALLIC CONDUIT, 2" DIA.	FOOT	160.0
81603040	UNIT DUCT, 600V, 2-1C NO. 6, 1/C NO. 8 GROUND, (XLP-TYPE USE), 1" DIA. POLYETHYLENE	FOOT	190.0
83000200	LIGHT POLE, ALUMINUM, 30 FT. M.H., 6 FT. DAVIT ARM	EACH	2.0
83600352	LIGHT POLE FOUNDATION, METAL, 11 1/2" BOLT CIRCLE, 8 5/8" X 6'	EACH	2.0
X0326617	PAINTING LIGHT POLE UNIT	EACH	2.0
X1400094	LUMINAIRE, LED, HORIZONTAL MOUNT, LOW WATTAGE	EACH	2.0

EXISTING LIGHTING CONTROLLER

WIRING DIAGRAM

LOCATION 2

MODEL: Default
FILE: \\mspc-pw\illinois\proj\72k21\CAD\data\CAD\sheet\0672K21-1-fbs-plan-Quincy.dgn

USER NAME = coxte	DESIGNED -	REVISED -
	DRAWN -	REVISED -
PLOT SCALE = 20.0000' / in.	CHECKED -	REVISED -
PLOT DATE = 2/5/2018	DATE -	REVISED -

**STATE OF ILLINOIS
DEPARTMENT OF TRANSPORTATION**

**QUINCY - ADAMS COUNTY
PLAN SHEET**

SCALE: SHEET 1 OF 2 SHEETS STA. TO STA.

F.A.* RTE.	SECTION	COUNTY	TOTAL SHEETS	SHEET NO.
VAR	*	VARIOUS	33	13
CONTRACT NO. 72K21				
ILLINOIS FED. AID PROJECT				

*D6 CROSSWALK IMPROV. 2018

IL ROUTE 57
SECTION:
DISTRICT 6
ADAMS COUNTY

**ILLINOIS DEPARTMENT OF TRANSPORTATION
LUMINAIRE PERFORMANCE TABLE**
Isolated Intersection

GIVEN CONDITIONS		
ROADWAY DATA	Lane Width	12 ft
	Number of Lanes (in one direction only)	3
	I.E.S. Surface Classification	R3
	Q-Zero Value	.07
LIGHT POLE DATA	Mounting Height	30 ft
	Mast Arm Length	6 ft
	Pole Set-Back From Edge of Pavement	6 ft
LUMINAIRE DATA	Luminaire Type	LED
	I.E.S. Vertical Distribution	Medium
	BUG Rating	U = 0
	I.E.S. Lateral Distribution	Type III
	Lumen Depreciation	0.90
	Dirt Depreciation	0.80
	Equipment Factor	0.95
Total Light Loss Factor	0.684	
LAYOUT DATA	Spacing	90 ft
	Configuration	Single Sided

- NOTES:**
- Variations from the above specified I.E.S. distribution pattern may be requested and acceptance of variations will be subject to review by the Engineer based on how well the performance requirements are met.
 - A Lumen Depreciation value greater than 0.90 for LED light sources shall be based upon I.E.S. LM-80 or I.E.S. LM-84 and I.E.S. TM-21 test reports.

PERFORMANCE REQUIREMENTS		
NOTE: These performance requirements shall be the minimum acceptable standards of photometric performance for the luminaire, based on the given conditions listed above.		
ILLUMINANCE	Average Illuminance, E_{AVE}	0.9 fc
	Uniformity Ratio, E_{AVE}/E_{MIN}	3.0:1
VEILING LUMINANCE	Veiling Luminance Ratio, L_V/L_{AVE}	0.3:1

LOCATION 2

MODEL: Default
FILE: \\nas01-pw01-08a\BID\NTEC\Illinois\gov\PI\DOT\Documents\DOT_Offices\District 6\Projects\0672K21\CADD\data\CAD\sheet\0672K21-Lum-Plan-Quincy.dgn

USER NAME = coxte	DESIGNED -	REVISED -	STATE OF ILLINOIS DEPARTMENT OF TRANSPORTATION	QUINCY - ADAMS COUNTY LUMINAIRE PERFORMANCE TABLE			F.A.* RTE.	SECTION	COUNTY	TOTAL SHEETS	SHEET NO.
PLOT SCALE = 20.0000' / in.	DRAWN -	REVISED -					VAR	*	VARIOUS	33	14
PLOT DATE = 2/5/2018	CHECKED -	REVISED -		SCALE:	SHEET 2	OF 2	SHEETS	STA.	TO STA.	CONTRACT NO. 72K21	
	DATE -	REVISED -					ILLINOIS		FED. AID PROJECT		

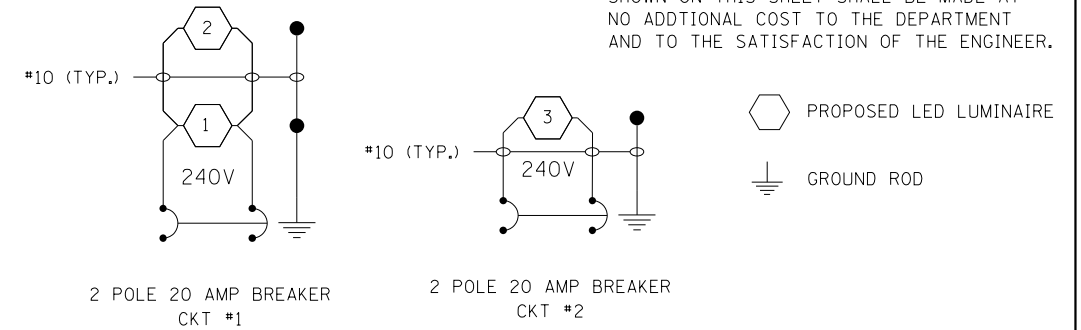
*D6 CROSSWALK IMPROV. 2018

LEGEND

- ===== UNDERGROUND CONDUIT, COILABLE NONMETALLIC CONDUIT, 2" DIA.
- UNIT DUCT, 600V, 2-1C NO. 10, 1/C NO. 10 GROUND, (XLP-TYPE USE), 3/4" DIA. POLYETHYLENE

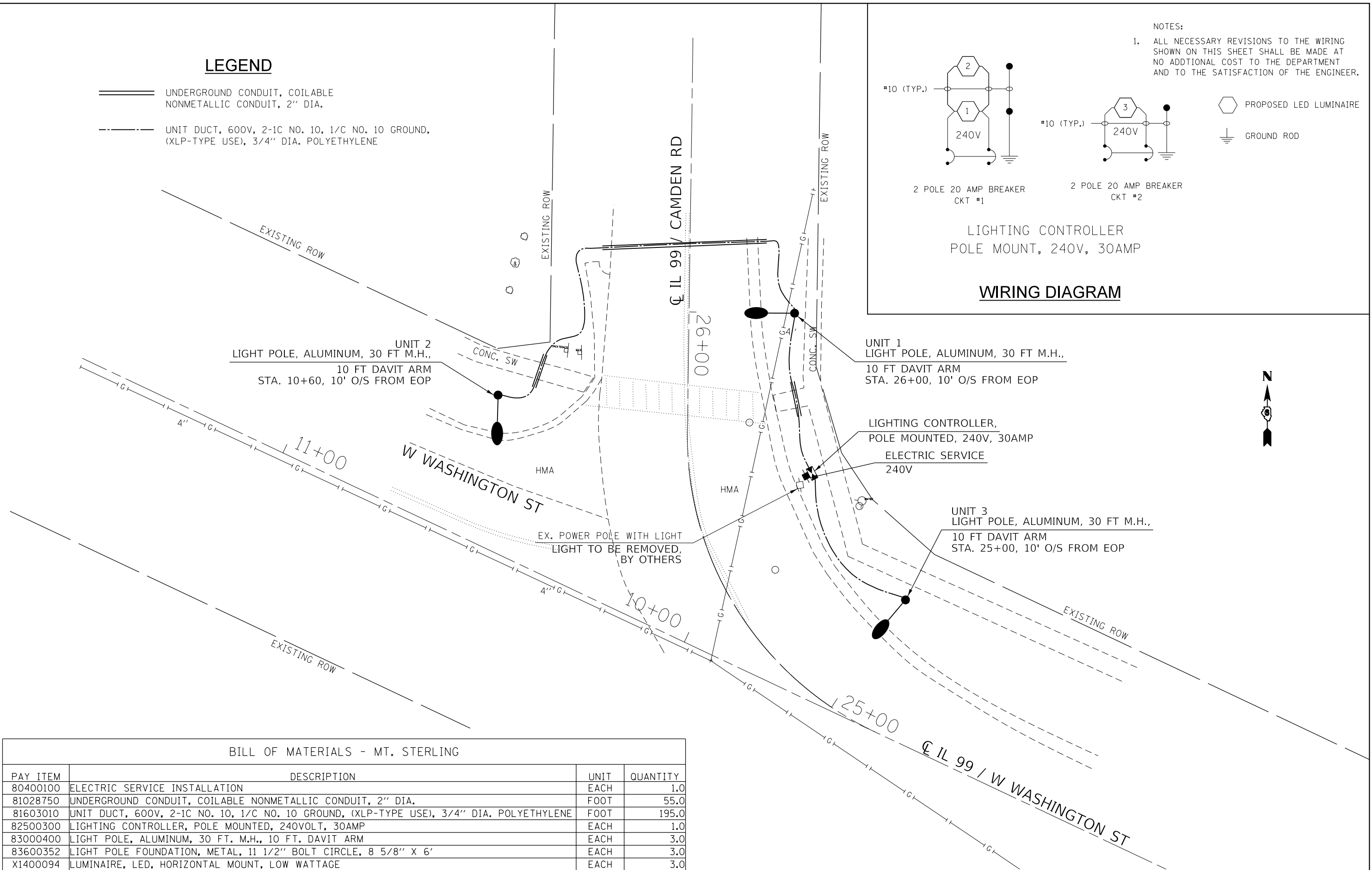
NOTES:

1. ALL NECESSARY REVISIONS TO THE WIRING SHOWN ON THIS SHEET SHALL BE MADE AT NO ADDITIONAL COST TO THE DEPARTMENT AND TO THE SATISFACTION OF THE ENGINEER.



LIGHTING CONTROLLER
POLE MOUNT, 240V, 30AMP

WIRING DIAGRAM



BILL OF MATERIALS - MT. STERLING

PAY ITEM	DESCRIPTION	UNIT	QUANTITY
80400100	ELECTRIC SERVICE INSTALLATION	EACH	1.0
81028750	UNDERGROUND CONDUIT, COILABLE NONMETALLIC CONDUIT, 2" DIA.	FOOT	55.0
81603010	UNIT DUCT, 600V, 2-1C NO. 10, 1/C NO. 10 GROUND, (XLP-TYPE USE), 3/4" DIA. POLYETHYLENE	FOOT	195.0
82500300	LIGHTING CONTROLLER, POLE MOUNTED, 240VOLT, 30AMP	EACH	1.0
83000400	LIGHT POLE, ALUMINUM, 30 FT. M.H., 10 FT. DAVIT ARM	EACH	3.0
83600352	LIGHT POLE FOUNDATION, METAL, 11 1/2" BOLT CIRCLE, 8 5/8" X 6'	EACH	3.0
X1400094	LUMINAIRE, LED, HORIZONTAL MOUNT, LOW WATTAGE	EACH	3.0

LOCATION 3

**STATE OF ILLINOIS
DEPARTMENT OF TRANSPORTATION**

**MT. STERLING - BROWN COUNTY
PLAN SHEET**

F.A.* RTE.	SECTION	COUNTY	TOTAL SHEETS	SHEET NO.
VAR	*	VARIOUS	33	15
CONTRACT NO. 72K21				

SCALE: SHEET 1 OF 2 SHEETS STA. TO STA.

ILLINOIS FED. AID PROJECT
*D6 CROSSWALK IMPROV. 2018

MODEL: Default
 FILE: \\mhc-pw\ulb\BEBID\ITC\Illinois\pwr\pwr\DOT\Documents\DOT - Offices\Director @ Projects\0672K21\CADD\data\CAD\sheet\0672K21-15-pln-ht-sterling.dgn

IL ROUTE 99
SECTION:
DISTRICT 6
BROWN COUNTY

**ILLINOIS DEPARTMENT OF TRANSPORTATION
LUMINAIRE PERFORMANCE TABLE**
Isolated Intersection

GIVEN CONDITIONS

ROADWAY DATA	Lane Width	12 ft
	Number of Lanes (in one direction only)	3
	I.E.S. Surface Classification	R3
	Q-Zero Value	.07
LIGHT POLE DATA	Mounting Height	30 ft
	Mast Arm Length	10 ft
	Pole Set-Back From Edge of Pavement	10 ft
LUMINAIRE DATA	Luminaire Type	LED
	I.E.S. Vertical Distribution	Medium
	BUG Rating	U = 0
	I.E.S. Lateral Distribution	Type III
	Lumen Depreciation	0.90
	Dirt Depreciation	0.80
	Equipment Factor	0.95
Total Light Loss Factor	0.684	
LAYOUT DATA	Spacing	80 ft
	Configuration	Single Sided

- NOTES:**
- Variations from the above specified I.E.S. distribution pattern may be requested and acceptance of variations will be subject to review by the Engineer based on how well the performance requirements are met.
 - A Lumen Depreciation value greater than 0.90 for LED light sources shall be based upon I.E.S. LM-80 or I.E.S. LM-84 and I.E.S. TM-21 test reports.

PERFORMANCE REQUIREMENTS

NOTE: These performance requirements shall be the minimum acceptable standards of photometric performance for the luminaire, based on the given conditions listed above.

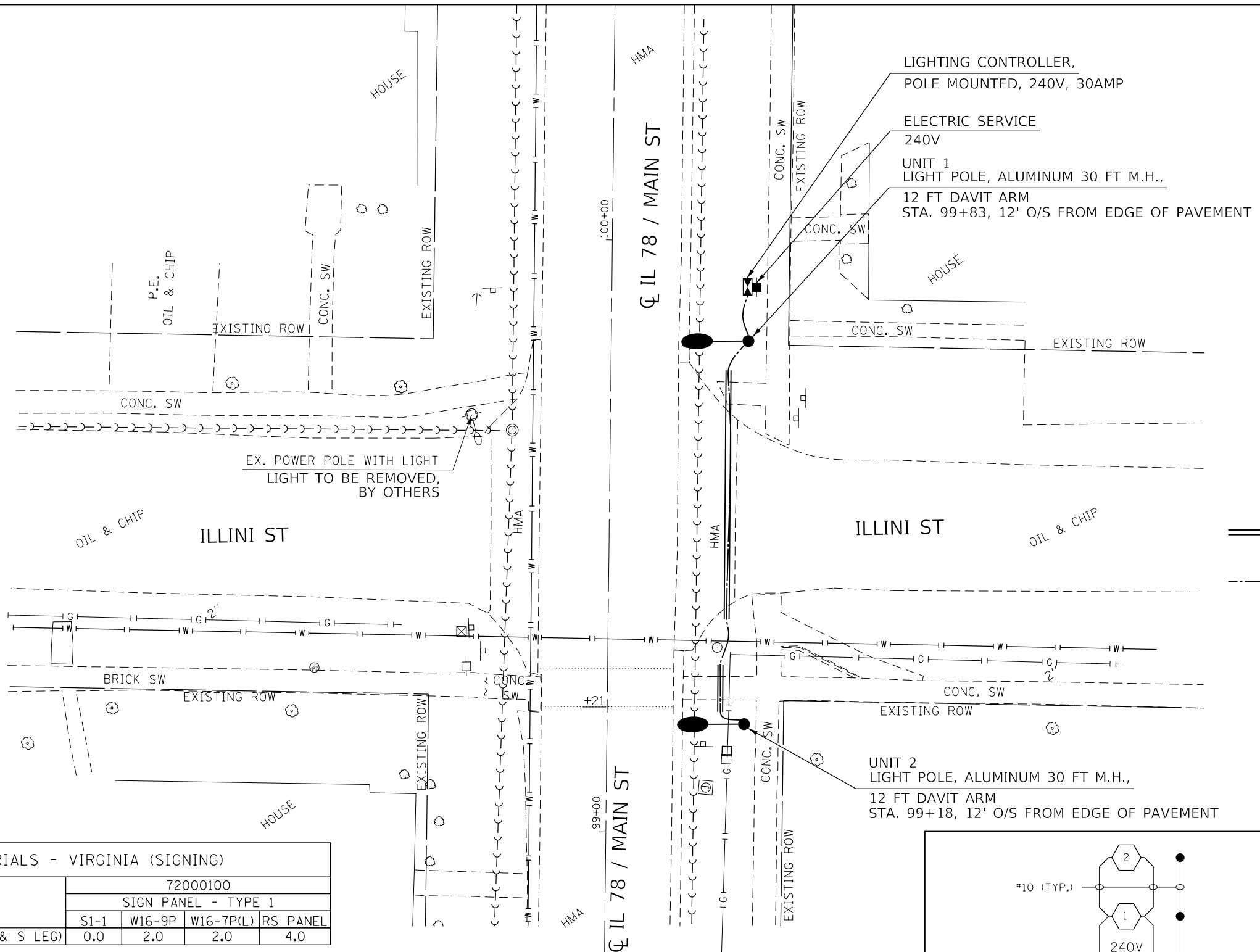
ILLUMINANCE	Average Luminance, E_{AVE}	0.9 fc
	Uniformity Ratio, E_{AVE}/E_{MIN}	3.0:1
VEILING LUMINANCE	Veiling Luminance Ratio, L_V/L_{AVE}	0.3:1

LOCATION 3

MODEL: Default
FILE NAME: P:\1108\B&E\BIDD\ITEC\Illinois\gov\PI\DOT\Documents\BIDD\Office\BIDD\TCT\Projects\0672K21\CADD\DATA\CAD\Sheet\0672K21-L-fts-plan-ht5-staffing.dgn

USER NAME = coxte	DESIGNED -	REVISED -	STATE OF ILLINOIS DEPARTMENT OF TRANSPORTATION	MT. STERLING - BROWN COUNTY LUMINAIRE PERFORMANCE TABLE	F.A.* RTE.	SECTION	COUNTY	TOTAL SHEETS	SHEET NO.		
PLOT SCALE = 20.0000' / in.	DRAWN -	REVISED -			SCALE:	SHEET 2 OF 2 SHEETS	STA.	TO STA.	VARIOUS	33	16
PLOT DATE = 2/5/2018	CHECKED -	REVISED -							CONTRACT NO. 72K21		
	DATE -	REVISED -							ILLINOIS FED. AID PROJECT		

*D6 CROSSWALK IMPROV. 2018



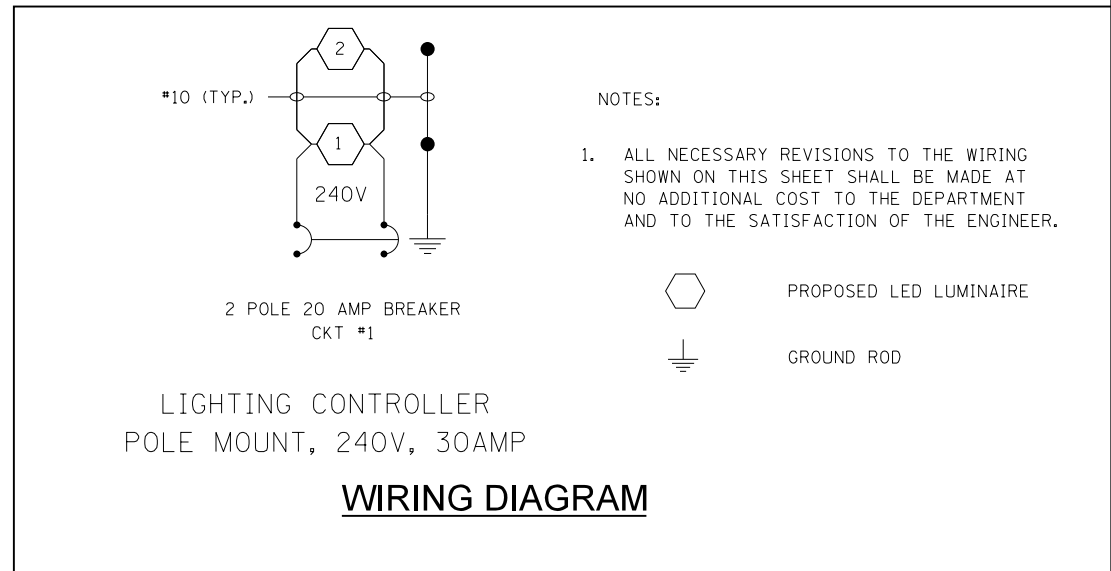
LEGEND

- ===== UNDERGROUND CONDUIT, COILABLE NONMETALLIC CONDUIT, 2" DIA.
- UNIT DUCT, 600V, 2-1C NO. 10, 1/C NO. 10 GROUND, (XLP-TYPE USE), 3/4" DIA. POLYETHYLENE

LOCATION 4

BILL OF MATERIALS - VIRGINIA (SIGNING)				
72000100				
SIGN PANEL - TYPE 1				
LOCATION	S1-1	W16-9P	W16-7P(L)	RS PANEL
IL78/MAIN ST. & ILLINI ST. (N & S LEG)	0.0	2.0	2.0	4.0

BILL OF MATERIALS - VIRGINIA (LIGHTING)				
PAY ITEM	DESCRIPTION	UNIT	QUANTITY	
80400100	ELECTRIC SERVICE INSTALLATION	EACH	1.0	
81028750	UNDERGROUND CONDUIT, COILABLE NONMETALLIC CONDUIT, 2" DIA.	FOOT	50.0	
81603010	UNIT DUCT, 600V, 2-1C NO. 10, 1/C NO. 10 GROUND, (XLP-TYPE USE), 3/4" DIA. POLYETHYLENE	FOOT	85.0	
82500300	LIGHTING CONTROLLER, POLE MOUNTED, 240VOLT, 30AMP	EACH	1.0	
83000500	LIGHT POLE, ALUMINUM, 30 FT. M.H., 12 FT. DAVIT ARM	EACH	2.0	
83600352	LIGHT POLE FOUNDATION, METAL, 11 1/2" BOLT CIRCLE, 8 5/8" X 6'	EACH	2.0	
X1400094	LUMINAIRE, LED, HORIZONTAL MOUNT, LOW WATTAGE	EACH	2.0	



MODEL: Default
 FILE: N:\ASAP\p\110110\110110\110110.dwg
 PROJECT: 110110\110110\110110.dwg
 OFFICE: J:\Projects\110110\110110\110110.dwg
 USER: caxte

USER NAME = caxte	DESIGNED -	REVISED -
	DRAWN -	REVISED -
PLOT SCALE = 20.0000 ' / in.	CHECKED -	REVISED -
PLOT DATE = 2/5/2018	DATE -	REVISED -

**STATE OF ILLINOIS
DEPARTMENT OF TRANSPORTATION**

**VIRGINIA - CASS COUNTY
PLAN SHEET**

SCALE:	SHEET 1 OF 2 SHEETS	STA.	TO STA.	F.A. RTE.	SECTION	COUNTY	TOTAL SHEETS	SHEET NO.
					*	VARIOUS	33	17
						CONTRACT NO. 72K21		
						ILLINOIS FED. AID PROJECT		

ILLINOIS DEPARTMENT OF TRANSPORTATION
LUMINAIRE PERFORMANCE TABLE
Isolated Intersection

GIVEN CONDITIONS		
ROADWAY DATA	Lane Width	12 ft
	Number of Lanes (in each direction)	1
	Median Width	0 ft
	I.E.S. Surface Classification	R3
	Q-Zero Value	.07
LIGHT POLE DATA	Mounting Height	30 ft
	Mast Arm Length	12 ft
	Pole Set-Back From Edge of Pavement	12 ft
LUMINAIRE DATA	Luminaire Type	LED
	I.E.S. Vertical Distribution	Medium
	BUG Rating	U = 0
	I.E.S. Lateral Distribution	Type III
	Lumen Depreciation	0.90
	Dirt Depreciation	0.80
	Equipment Factor	0.95
	Total Light Loss Factor	0.684
LAYOUT DATA	Spacing	65 ft
	Configuration	Single-Sided

- NOTES:**
- Variations from the above specified I.E.S. distribution pattern may be requested and acceptance of variations will be subject to review by the Engineer based on how well the performance requirements are met.
 - A Lumen Depreciation value greater than 0.90 for LED light sources shall be based upon I.E.S. LM-80 or I.E.S. LM-84 and I.E.S. TM-21 test reports.

PERFORMANCE REQUIREMENTS		
NOTE: These performance requirements shall be the minimum acceptable standards of photometric performance for the luminaire, based on the given conditions listed above.		
ILLUMINANCE	Average Illuminance, E_{AVE}	0.9 fc
	Uniformity Ratio, E_{AVE}/E_{MIN}	3.0:1
VEILING LUMINANCE	Veiling Luminance Ratio, L_V/L_{AVE}	0.3:1

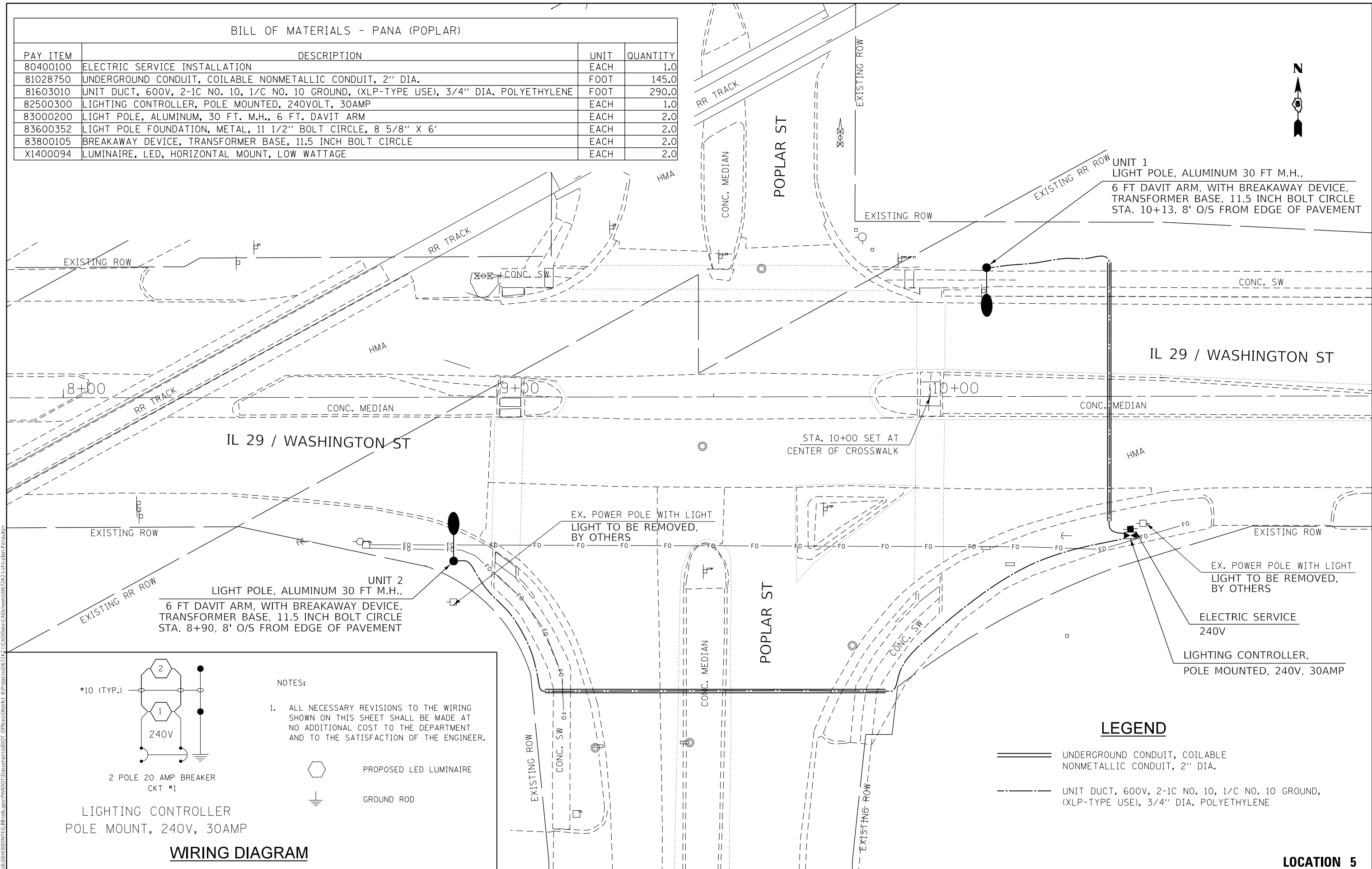
LOCATION 4

MODEL: Default
FILE: \\nas0101\B&E\BID\NTEC\Illinois\gov\PI\DOT\Documents\DOT_Offices\District_6\Projects\0672K21\CADD\DATA\CAD\ Sheets\0672K21_Luminaire_Perf\tbla.dgn

USER NAME = coxte	DESIGNED -	REVISED -	STATE OF ILLINOIS DEPARTMENT OF TRANSPORTATION	VIRGINIA - CASS COUNTY LUMINAIRE PERFORMANCE TABLE			F.A. RTE.	SECTION	COUNTY	TOTAL SHEETS	SHEET NO.	
PLOT SCALE = 20.0000' / in.	DRAWN -	REVISED -		SCALE:	SHEET 2	OF 2	SHEETS	STA.	TO STA.	ILLINOIS	FED. AID PROJECT	
PLOT DATE = 2/5/2018	CHECKED -	REVISED -								VARIOUS	33	18
	DATE -	REVISED -								CONTRACT NO. 72K21		

BILL OF MATERIALS - PANA (POPLAR)

PAY ITEM	DESCRIPTION	UNIT	QUANTITY
80400100	ELECTRIC SERVICE INSTALLATION	EACH	1.0
81028750	UNDERGROUND CONDUIT, COILABLE NONMETALLIC CONDUIT, 2" DIA.	FOOT	145.0
81603010	UNIT DUCT, 600V, 2-1C NO. 10, 1/C NO. 10 GROUND, (XLP-TYPE USE), 3/4" DIA. POLYETHYLENE	FOOT	290.0
82500300	LIGHTING CONTROLLER, POLE MOUNTED, 240VOLT, 30AMP	EACH	1.0
83000200	LIGHT POLE, ALUMINUM, 30 FT. M.H., 6 FT. DAVIT ARM	EACH	2.0
83600352	LIGHT POLE FOUNDATION, METAL, 11 1/2" BOLT CIRCLE, 8 5/8" X 6'	EACH	2.0
83800105	BREAKAWAY DEVICE, TRANSFORMER BASE, 11.5 INCH BOLT CIRCLE	EACH	2.0
X1400094	LUMINAIRE, LED, HORIZONTAL MOUNT, LOW WATTAGE	EACH	2.0



UNIT 1
 LIGHT POLE, ALUMINUM 30 FT M.H.,
 6 FT DAVIT ARM, WITH BREAKAWAY DEVICE,
 TRANSFORMER BASE, 11.5 INCH BOLT CIRCLE
 STA. 10+13, 8' O/S FROM EDGE OF PAVEMENT

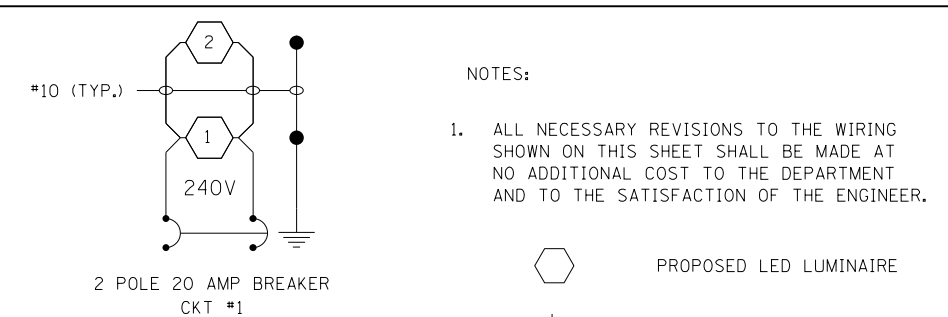
UNIT 2
 LIGHT POLE, ALUMINUM 30 FT M.H.,
 6 FT DAVIT ARM, WITH BREAKAWAY DEVICE,
 TRANSFORMER BASE, 11.5 INCH BOLT CIRCLE
 STA. 8+90, 8' O/S FROM EDGE OF PAVEMENT

EX. POWER POLE WITH LIGHT
 LIGHT TO BE REMOVED,
 BY OTHERS

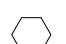

EX. POWER POLE WITH LIGHT
 LIGHT TO BE REMOVED,
 BY OTHERS



ELECTRIC SERVICE
 240V

LIGHTING CONTROLLER,
 POLE MOUNTED, 240V, 30AMP



NOTES:
 1. ALL NECESSARY REVISIONS TO THE WIRING
 SHOWN ON THIS SHEET SHALL BE MADE AT
 NO ADDITIONAL COST TO THE DEPARTMENT
 AND TO THE SATISFACTION OF THE ENGINEER.

 PROPOSED LED LUMINAIRE
 GROUND ROD

LEGEND
 UNDERGROUND CONDUIT, COILABLE NONMETALLIC CONDUIT, 2" DIA.
 UNIT DUCT, 600V, 2-1C NO. 10, 1/C NO. 10 GROUND, (XLP-TYPE USE), 3/4" DIA. POLYETHYLENE

LIGHTING CONTROLLER
 POLE MOUNT, 240V, 30AMP

WIRING DIAGRAM

LOCATION 5

STATE OF ILLINOIS
 DEPARTMENT OF TRANSPORTATION

PANA (IL29 / POPLAR ST) - CHRISTIAN COUNTY
 PLAN SHEET

F.A. RTE.	SECTION	COUNTY	TOTAL SHEETS	SHEET NO.
	*	VARIOUS	33	19
CONTRACT NO. 72K21				
ILLINOIS		FED. AID PROJECT		

SCALE: SHEET 1 OF 2 SHEETS STA. TO STA.

*D6 CROSSWALK IMPROV. 2018

IL 29 (Washington St) & Poplar St
SECTION:
DISTRICT 6
CHRISTIAN COUNTY

**ILLINOIS DEPARTMENT OF TRANSPORTATION
LUMINAIRE PERFORMANCE TABLE**
Isolated Intersection

GIVEN CONDITIONS		
ROADWAY DATA	Lane Width	15 ft
	Number of Lanes (in each direction)	2
	Median Width	0 ft
	I.E.S. Surface Classification	R3
	Q-Zero Value	.07
LIGHT POLE DATA	Mounting Height	30 ft
	Mast Arm Length	6 ft
	Pole Set-Back From Edge of Pavement	8 ft
LUMINAIRE DATA	Luminaire Type	LED
	I.E.S. Vertical Distribution	Medium
	BUG Rating	U = 0
	I.E.S. Lateral Distribution	Type III or IV
	Lumen Depreciation	0.90
	Dirt Depreciation	0.80
	Equipment Factor	0.95
	Total Light Loss Factor	0.684
LAYOUT DATA	Spacing	205 ft
	Configuration	Staggered

- NOTES:**
- Variations from the above specified I.E.S. distribution pattern may be requested and acceptance of variations will be subject to review by the Engineer based on how well the performance requirements are met.
 - A Lumen Depreciation value greater than 0.90 for LED light sources shall be based upon I.E.S. LM-80 or I.E.S. LM-84 and I.E.S. TM-21 test reports.

PERFORMANCE REQUIREMENTS		
NOTE: These performance requirements shall be the minimum acceptable standards of photometric performance for the luminaire, based on the given conditions listed above.		
ILLUMINANCE	Average Luminance, E_{AVE}	0.9 fc
	Uniformity Ratio, E_{AVE}/E_{MIN}	3.0:1
VEILING LUMINANCE	Veiling Luminance Ratio, L_V/L_{AVE}	0.3:1

MODEL: Default
FILE NAME: P:\IL\08\EBID\NTEC\Illinois.gov\PW\DOT\Documents\DOT_Offices\District 6\Projects\0672K21\CADD\data\CAD\sheet\0672K21_LumPerf.dwg

LOCATION 5

USER NAME = coxte	DESIGNED -	REVISED -	STATE OF ILLINOIS DEPARTMENT OF TRANSPORTATION	PANA (IL29 / POPLAR ST) – CHRISTIAN COUNTY LUMINAIRE PERFORMANCE TABLE	F.A.* RTE.	SECTION	COUNTY	TOTAL SHEETS	SHEET NO.		
PLOT SCALE = 20.0000 ' / in.	DRAWN -	REVISED -			SCALE:	SHEET 2 OF 2 SHEETS	STA.	TO STA.	VARIOUS	33	20
PLOT DATE = 2/5/2018	CHECKED -	REVISED -							CONTRACT NO. 72K21		
	DATE -	REVISED -							ILLINOIS		FED. AID PROJECT

*D6 CROSSWALK IMPROV. 2018

US 51/ IL 16 (1ST ST) & SPRUCE
SECTION:
DISTRICT 6
CHRISTIAN COUNTY

**ILLINOIS DEPARTMENT OF TRANSPORTATION
LUMINAIRE PERFORMANCE TABLE**
Isolated Intersection

GIVEN CONDITIONS		
ROADWAY DATA	Lane Width	<u>12 ft</u>
	Number of Lanes (in each direction)	<u>1</u>
	Median Width	<u>0 ft</u>
	I.E.S. Surface Classification	<u>R3</u>
	Q-Zero Value	<u>.07</u>
LIGHT POLE DATA	Mounting Height	<u>30 ft</u>
	Mast Arm Length	<u>6 ft</u>
	Pole Set-Back From Edge of Pavement	<u>6 ft</u>
LUMINAIRE DATA	Luminaire Type	<u>LED</u>
	I.E.S. Vertical Distribution	<u>Medium</u>
	BUG Rating	<u>U = 0</u>
	I.E.S. Lateral Distribution	<u>Type III</u>
	Lumen Depreciation	<u>0.90</u>
	Dirt Depreciation	<u>0.80</u>
	Equipment Factor	<u>0.95</u>
	Total Light Loss Factor	<u>0.684</u>
LAYOUT DATA	Spacing	<u>230 ft</u>
	Configuration	<u>Staggered</u>

- NOTES:**
- Variations from the above specified I.E.S. distribution pattern may be requested and acceptance of variations will be subject to review by the Engineer based on how well the performance requirements are met.
 - A Lumen Depreciation value greater than 0.90 for LED light sources shall be based upon I.E.S. LM-80 or I.E.S. LM-84 and I.E.S. TM-21 test reports.

PERFORMANCE REQUIREMENTS		
NOTE: These performance requirements shall be the minimum acceptable standards of photometric performance for the luminaire, based on the given conditions listed above.		
ILLUMINANCE	Average Luminance, E_{AVE}	<u>0.9 fc</u>
	Uniformity Ratio, E_{AVE}/E_{MIN}	<u>3.0:1</u>
VEILING LUMINANCE	Veiling Luminance Ratio, L_V/L_{AVE}	<u>0.3:1</u>



LOCATION 6

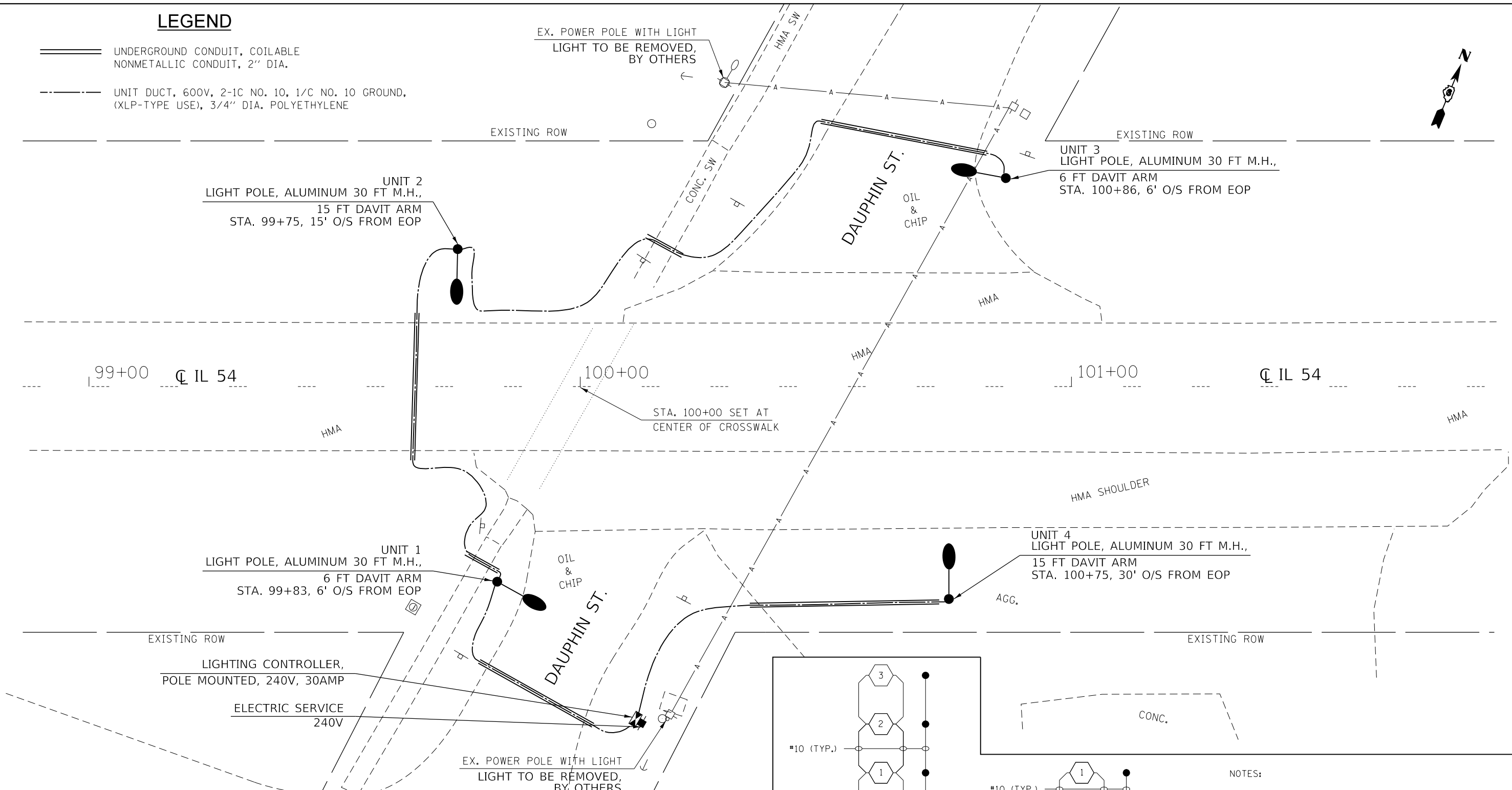
MODEL: Default
FILE NAME: P:\1108\B&E\BIDD\ITEC\Illinois.gov\FWIDOT\Documents\DOT_Offices\District 6\Projects\0672K21\CADD\data\CAD\sheet\0672K21_LumPerf.dwg

USER NAME = coxte	DESIGNED -	REVISED -	STATE OF ILLINOIS DEPARTMENT OF TRANSPORTATION	PANA (US 51 / IL 16 & SPRUCE ST) - CHRISTIAN COUNTY LUMINAIRE PERFORMANCE TABLE	F.A.* RTE.	SECTION	COUNTY	TOTAL SHEETS	SHEET NO.	
PLOT SCALE = 20.0000 ' / in.	DRAWN -	REVISED -			VAR	*	VARIOUS	33	22	
PLOT DATE = 2/5/2018	CHECKED -	REVISED -			SCALE: SHEET 2 OF 2 SHEETS STA. TO STA.		ILLINOIS FED. AID PROJECT		CONTRACT NO. 72K21	
	DATE -	REVISED -								

*D6 CROSSWALK IMPROV. 2018

LEGEND

-  UNDERGROUND CONDUIT, COILABLE NONMETALLIC CONDUIT, 2" DIA.
-  UNIT DUCT, 600V, 2-1C NO. 10, 1/C NO. 10 GROUND, (XLP-TYPE USE), 3/4" DIA. POLYETHYLENE



UNIT 2
LIGHT POLE, ALUMINUM 30 FT M.H.,
15 FT DAVIT ARM
STA. 99+75, 15' O/S FROM EOP

UNIT 3
LIGHT POLE, ALUMINUM 30 FT M.H.,
6 FT DAVIT ARM
STA. 100+86, 6' O/S FROM EOP

UNIT 1
LIGHT POLE, ALUMINUM 30 FT M.H.,
6 FT DAVIT ARM
STA. 99+83, 6' O/S FROM EOP

UNIT 4
LIGHT POLE, ALUMINUM 30 FT M.H.,
15 FT DAVIT ARM
STA. 100+75, 30' O/S FROM EOP

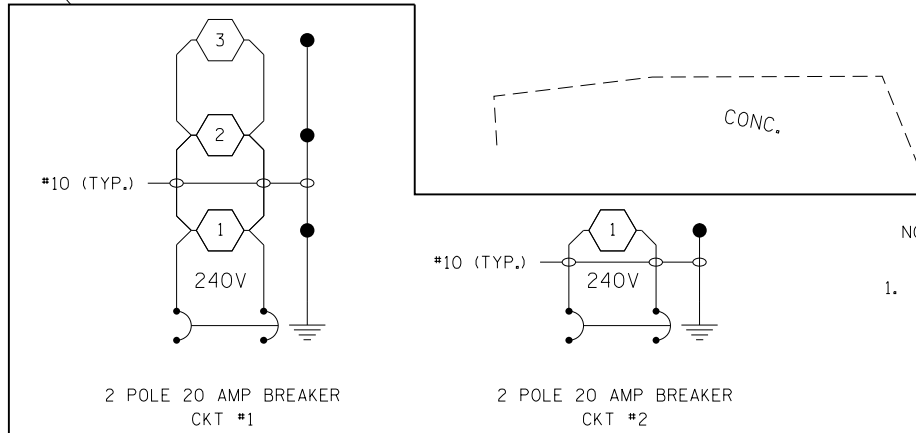
LIGHTING CONTROLLER,
POLE MOUNTED, 240V, 30AMP

ELECTRIC SERVICE
240V

EX. POWER POLE WITH LIGHT
LIGHT TO BE REMOVED,
BY OTHERS

BILL OF MATERIALS - CHESTNUT

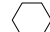

PAY ITEM	DESCRIPTION	UNIT	QUANTITY
80400100	ELECTRIC SERVICE INSTALLATION	EACH	1.0
81028750	UNDERGROUND CONDUIT, COILABLE NONMETALLIC CONDUIT, 2" DIA.	FOOT	150.0
81603010	UNIT DUCT, 600V, 2-1C NO. 10, 1/C NO. 10 GROUND, (XLP-TYPE USE), 3/4" DIA. POLYETHYLENE	FOOT	385.0
82500300	LIGHTING CONTROLLER, POLE MOUNTED, 240VOLT, 30AMP	EACH	1.0
83000200	LIGHT POLE, ALUMINUM, 30 FT. M.H., 6 FT. DAVIT ARM	EACH	2.0
83000600	LIGHT POLE, ALUMINUM, 30 FT. M.H., 15 FT. DAVIT ARM	EACH	2.0
83600352	LIGHT POLE FOUNDATION, METAL, 11 1/2" BOLT CIRCLE, 8 5/8" X 6'	EACH	4.0
83800650	BREAKAWAY DEVICE, COUPLING WITH STAINLESS STEEL SCREEN	EACH	16.0
X1400094	LUMINAIRE, LED, HORIZONTAL MOUNT, LOW WATTAGE	EACH	4.0



LIGHTING CONTROLLER
POLE MOUNT, 240V, 30AMP

WIRING DIAGRAM

- NOTES:
- ALL NECESSARY REVISIONS TO THE WIRING SHOWN ON THIS SHEET SHALL BE MADE AT NO ADDITIONAL COST TO THE DEPARTMENT AND TO THE SATISFACTION OF THE ENGINEER.

-  PROPOSED LED LUMINAIRE
-  GROUND ROD

LOCATION 7

STATE OF ILLINOIS
DEPARTMENT OF TRANSPORTATION

CHESTNUT - LOGAN COUNTY
PLAN SHEET

F.A.* RTE.	SECTION	COUNTY	TOTAL SHEETS	SHEET NO.
VAR	*	VARIOUS	33	23
			CONTRACT NO. 72K21	

SCALE: SHEET 1 OF 2 SHEETS STA. TO STA.

*D6 CROSSWALK IMPROV. 2018

MODEL: Default
FILE: \\nas01\proj\1108\B&E\BIDD\TEC\Illinois\proj\72K21\CD\Drawings\CD\Sheet\72K21-1-1-Plan-Chestnut.dgn

IL ROUTE 54
SECTION:
DISTRICT 6
LOGAN COUNTY

**ILLINOIS DEPARTMENT OF TRANSPORTATION
LUMINAIRE PERFORMANCE TABLE**
Isolated Intersection

GIVEN CONDITIONS		
ROADWAY DATA	Lane Width	12 ft
	Number of Lanes (in one direction only)	3
	I.E.S. Surface Classification	R3
	Q-Zero Value	.07
LIGHT POLE DATA	Mounting Height	30 ft
	Mast Arm Length	15 ft
	Pole Set-Back From Edge of Pavement	15 ft
LUMINAIRE DATA	Luminaire Type	LED
	I.E.S. Vertical Distribution	Medium
	BUG Rating	U = 0
	I.E.S. Lateral Distribution	Type III
	Lumen Depreciation	0.90
	Dirt Depreciation	0.80
	Equipment Factor	0.95
	Total Light Loss Factor	0.684
LAYOUT DATA	Spacing	160 ft
	Configuration	Staggered

- NOTES:**
- Variations from the above specified I.E.S. distribution pattern may be requested and acceptance of variations will be subject to review by the Engineer based on how well the performance requirements are met.
 - A Lumen Depreciation value greater than 0.90 for LED light sources shall be based upon I.E.S. LM-80 or I.E.S. LM-84 and I.E.S. TM-21 test reports.

PERFORMANCE REQUIREMENTS		
NOTE: These performance requirements shall be the minimum acceptable standards of photometric performance for the luminaire, based on the given conditions listed above.		
ILLUMINANCE	Average Luminance, E_{AVE}	0.9 fc
	Uniformity Ratio, E_{AVE}/E_{MIN}	3.0:1
Veiling Luminance	Veiling Luminance Ratio, L_v/L_{ave}	0.3:1

LOCATION 7

MODEL: Default
FILE: \\nas0101\B&E\BID\NTEC\Illinois\gov\PIV\DOT\Documents\DOT_Offices\District 6\Projects\0672K21\CADDData\CAD\Sheet\0672K21_Lights\plan-Chestnut.dgn

USER NAME = coxte	DESIGNED -	REVISED -	STATE OF ILLINOIS DEPARTMENT OF TRANSPORTATION	CHESTNUT - LOGAN COUNTY LUMINAIRE PERFORMANCE TABLE			F.A.* RTE.	SECTION	COUNTY	TOTAL SHEETS	SHEET NO.	
PLOT SCALE = 20.0000' / in.	DRAWN -	REVISED -		SCALE:	SHEET 2	OF 2	SHEETS	STA.	TO STA.	VARIOUS	33	24
PLOT DATE = 2/5/2018	CHECKED -	REVISED -		ILLINOIS	FED. AID PROJECT		CONTRACT NO. 72K21					
	DATE -	REVISED -										

*D6 CROSSWALK IMPROV. 2018

IL ROUTE 16
SECTION:
DISTRICT 6
MACOUPIN COUNTY

**ILLINOIS DEPARTMENT OF TRANSPORTATION
LUMINAIRE PERFORMANCE TABLE**
Major - High

GIVEN CONDITIONS		
ROADWAY DATA	Lane Width	12 ft
	Number of Lanes (in each direction)	1
	Median Width	0 ft
	I.E.S. Surface Classification	R3
	Q-Zero Value	.07
LIGHT POLE DATA	Mounting Height	16 ft
	Mast Arm Length	4 ft
	Pole Set-Back From Edge of Pavement	6 ft
LUMINAIRE DATA	Luminaire Type	LED
	BUG Rating	U = 0
	I.E.S. Lateral Distribution	Type III or IV
	Lumen Depreciation	0.90
	Dirt Depreciation	0.80
	Equipment Factor	0.95
	Total Light Loss Factor	0.684
LAYOUT DATA	Spacing	70 ft
	Configuration	Staggered

- NOTES:**
- Variations from the above specified I.E.S. distribution pattern may be requested and acceptance of variations will be subject to review by the Engineer based on how well the performance requirements are met.
 - A Lumen Depreciation value greater than 0.90 for LED light sources shall be based upon I.E.S. LM-80 or I.E.S. LM-84 and I.E.S. TM-21 test reports.

PERFORMANCE REQUIREMENTS		
NOTE: These performance requirements shall be the minimum acceptable standards of photometric performance for the luminaire, based on the given conditions listed above.		
LUMINANCE	Average Luminance, L_{AVE}	1.2 Cd/m ²
	Uniformity Ratio, L_{AVE}/L_{MIN}	3.0:1
	Uniformity Ratio, L_{MAX}/L_{MIN}	5.0:1
	Veiling Luminance Ratio, L_V/L_{AVE}	0.4:1

LOCATION 8

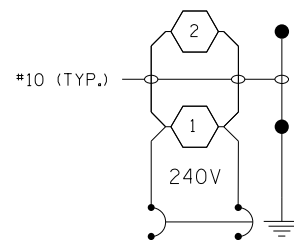
MODEL: Default
FILE NAME: P:\IL\08\B&E\BIDD\ITEC\Illinois.gov\FWIDOT\Documents\BIDD\Office\BIDD\TCT_CAD\00Data\CAD\Sheet\0672K21_Crosswalk.dgn

USER NAME = coxte	DESIGNED -	REVISED -	STATE OF ILLINOIS DEPARTMENT OF TRANSPORTATION	GILLESPIE - MACOUPIN COUNTY LUMINAIRE PERFORMANCE TABLE	F.A.* RTE.	SECTION	COUNTY	TOTAL SHEETS	SHEET NO.		
PLOT SCALE = 20,0000' / in.	DRAWN -	REVISED -			SCALE:	SHEET 2 OF 2 SHEETS	STA.	TO STA.	ILLINOIS	FED. AID PROJECT	
PLOT DATE = 2/5/2018	CHECKED -	REVISED -							VARIOUS	33	26
	DATE -	REVISED -							CONTRACT NO. 72K21		

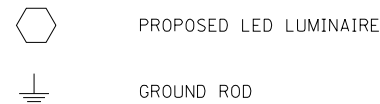
*D6 CROSSWALK IMPROV. 2018

BILL OF MATERIALS - MASON CITY

PAY ITEM	DESCRIPTION	UNIT	QUANTITY
80400100	ELECTRIC SERVICE INSTALLATION	EACH	1.0
81028750	UNDERGROUND CONDUIT, COILABLE NONMETALLIC CONDUIT, 2" DIA.	FOOT	95.0
81603010	UNIT DUCT, 600V, 2-1C NO. 10, 1/C NO. 10 GROUND, (XLP-TYPE USE), 3/4" DIA. POLYETHYLENE	FOOT	195.0
82500300	LIGHTING CONTROLLER, POLE MOUNTED, 240VOLT, 30AMP	EACH	1.0
83000600	LIGHT POLE, ALUMINUM, 30 FT. M.H., 15 FT. DAVIT ARM	EACH	2.0
83600352	LIGHT POLE FOUNDATION, METAL, 11 1/2" BOLT CIRCLE, 8 5/8" X 6'	EACH	2.0
X1400094	LUMINAIRE, LED, HORIZONTAL MOUNT, LOW WATTAGE	EACH	2.0



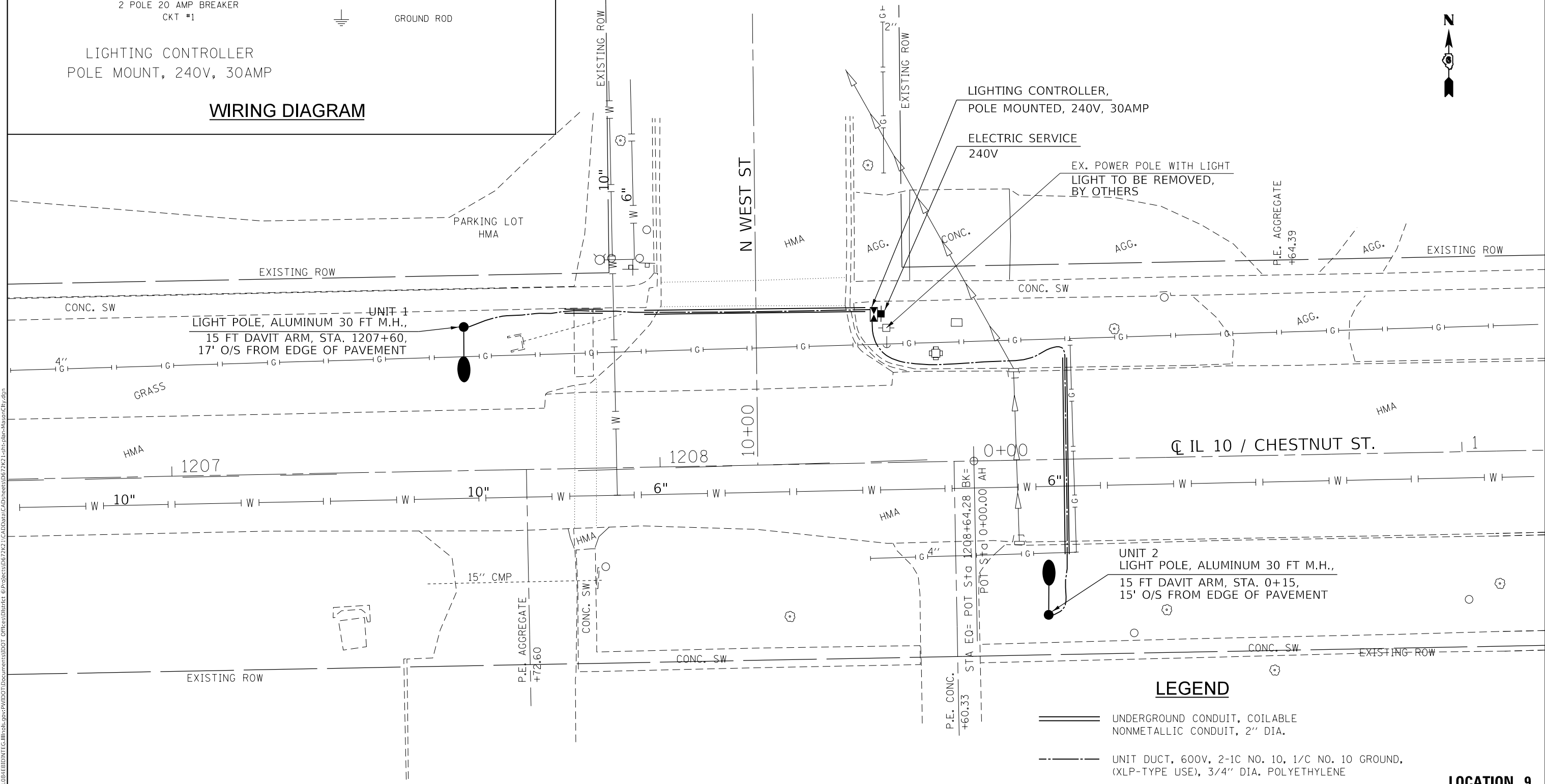
NOTES:
1. ALL NECESSARY REVISIONS TO THE WIRING SHOWN ON THIS SHEET SHALL BE MADE AT NO ADDITIONAL COST TO THE DEPARTMENT AND TO THE SATISFACTION OF THE ENGINEER.



2 POLE 20 AMP BREAKER
CKT #1

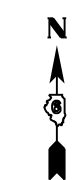
LIGHTING CONTROLLER
POLE MOUNT, 240V, 30AMP

WIRING DIAGRAM



LEGEND

- ==== UNDERGROUND CONDUIT, COILABLE NONMETALLIC CONDUIT, 2" DIA.
- UNIT DUCT, 600V, 2-1C NO. 10, 1/C NO. 10 GROUND, (XLP-TYPE USE), 3/4" DIA. POLYETHYLENE



LOCATION 9

MODEL: Default
FILE: \\nas01\proj\118148\BID\NTEC\Illinois\gov\pww\DOT\Documents\DOT Office\Bldg\Tet 6\Project\0672621\CADD\DATA\CAD\Sheet\0672621-1-fhs-plan-hdr-cvt.dgn

USER NAME = coxte	DESIGNED -	REVISED -
	DRAWN -	REVISED -
PLOT SCALE = 20.0000' / in.	CHECKED -	REVISED -
PLOT DATE = 2/5/2018	DATE -	REVISED -

**STATE OF ILLINOIS
DEPARTMENT OF TRANSPORTATION**

**MASON CITY - MASON COUNTY
PLAN SHEET**

F.A. RTE.	SECTION	COUNTY	TOTAL SHEETS	SHEET NO.
VAR	*	VARIOUS	33	27
CONTRACT NO. 72K21				
SCALE:		SHEET 1 OF 2 SHEETS	STA.	TO STA.

*D6 CROSSWALK IMPROV. 2018

IL ROUTE 10
SECTION:
DISTRICT 6
MASON COUNTY

ILLINOIS DEPARTMENT OF TRANSPORTATION
LUMINAIRE PERFORMANCE TABLE
Isolated Intersection

GIVEN CONDITIONS		
ROADWAY DATA	Lane Width	12 ft
	Number of Lanes (in one direction only)	3
	I.E.S. Surface Classification	R3
	Q-Zero Value	.07
LIGHT POLE DATA	Mounting Height	30 ft
	Mast Arm Length	15 ft
	Pole Set-Back From Edge of Pavement	15 ft
LUMINAIRE DATA	Luminaire Type	LED
	I.E.S. Vertical Distribution	Medium
	BUG Rating	U = 0
	I.E.S. Lateral Distribution	Type III
	Lumen Depreciation	0.90
	Dirt Depreciation	0.80
	Equipment Factor	0.95
	Total Light Loss Factor	0.684
LAYOUT DATA	Spacing	265 ft
	Configuration	Staggered

- NOTES:**
- Variations from the above specified I.E.S. distribution pattern may be requested and acceptance of variations will be subject to review by the Engineer based on how well the performance requirements are met.
 - A Lumen Depreciation value greater than 0.90 for LED light sources shall be based upon I.E.S. LM-80 or I.E.S. LM-84 and I.E.S. TM-21 test reports.

PERFORMANCE REQUIREMENTS		
NOTE: These performance requirements shall be the minimum acceptable standards of photometric performance for the luminaire, based on the given conditions listed above.		
ILLUMINANCE	Average Illuminance, E_{AVE}	0.9 fc
	Uniformity Ratio, E_{AVE}/E_{MIN}	3.0:1
Veiling Luminance	Veiling Luminance Ratio, L_V/L_{AVE}	0.3:1

LOCATION 9

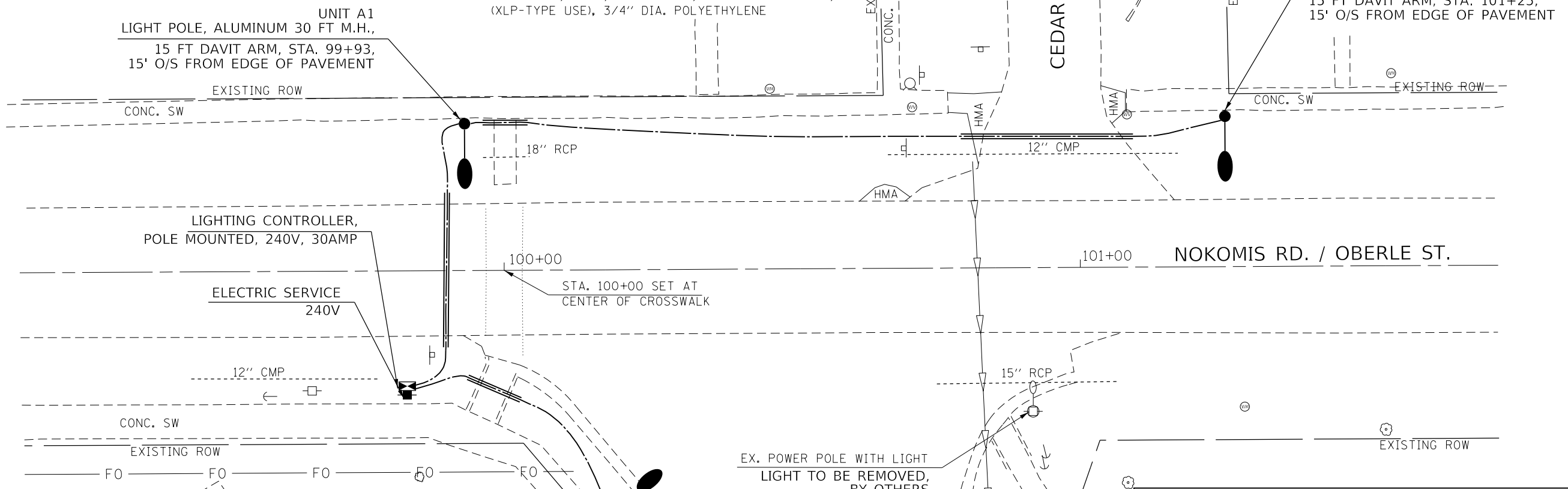
MODEL: Default
FILE NAME: P:\110848\BID\NITEC\Illinois.gov\FW\DOT\Documents\DOT Office\District 6\Projects\0672\21\CAD\Drawings\0672\21\Left\plan-MasonCity.dgn

USER NAME = coxte	DESIGNED -	REVISED -	STATE OF ILLINOIS DEPARTMENT OF TRANSPORTATION	MASON CITY - MASON COUNTY LUMINAIRE PERFORMANCE TABLE	F.A.* RTE.	SECTION	COUNTY	TOTAL SHEETS	SHEET NO.	
PLOT SCALE = 20.0000" / in.	DRAWN -	REVISED -			VAR	*	VARIOUS	33	28	
PLOT DATE = 2/5/2018	CHECKED -	REVISED -			SCALE: SHEET 2 OF 2 SHEETS STA. TO STA.		ILLINOIS FED. AID PROJECT		CONTRACT NO. 72K21	
	DATE -	REVISED -			*D6 CROSSWALK IMPROV. 2018					



LEGEND

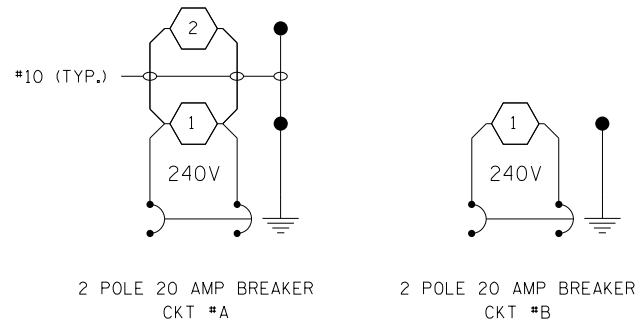
- ===== UNDERGROUND CONDUIT, COILABLE NONMETALLIC CONDUIT, 2" DIA.
- UNIT DUCT, 600V, 2-1C NO. 10, 1/C NO. 10 GROUND, (XLP-TYPE USE), 3/4" DIA. POLYETHYLENE



NOTES:

- ALL NECESSARY REVISIONS TO THE WIRING SHOWN ON THIS SHEET SHALL BE MADE AT NO ADDITIONAL COST TO THE DEPARTMENT AND TO THE SATISFACTION OF THE ENGINEER.

- PROPOSED LED LUMINAIRE
- GROUND ROD



LIGHTING CONTROLLER
POLE MOUNT, 240V, 30AMP

WIRING DIAGRAM

LOCATION 10

BILL OF MATERIALS - NOKOMIS (SIGNING)				
LOCATION	72000100 SIGN PANEL - TYPE 1			
	W11-2	W16-9P	W16-7P(L)	RS PANEL
•10-A: IL16/STATE ST & PINE ST	2.0		2.0	2.0
•10-B: IL16/STATE ST & MAPLE ST	1.0		1.0	1.0

- ADD SIGNAGE TO N AND S LEGS
- ADD SIGNAGE TO N LEG ONLY

BILL OF MATERIALS - NOKOMIS (LIGHTING)			
PAY ITEM	DESCRIPTION	UNIT	QUANTITY
80400100	ELECTRIC SERVICE INSTALLATION	EACH	1.0
81028750	UNDERGROUND CONDUIT, COILABLE NONMETALLIC CONDUIT, 2" DIA.	FOOT	75.0
81603010	UNIT DUCT, 600V, 2-1C NO. 10, 1/C NO. 10 GROUND, (XLP-TYPE USE), 3/4" DIA. POLYETHYLENE	FOOT	245.0
82500300	LIGHTING CONTROLLER, POLE MOUNTED, 240VOLT, 30AMP	EACH	1.0
83000300	LIGHT POLE, ALUMINUM, 30 FT. M.H., 8 FT. DAVIT ARM	EACH	1.0
83000600	LIGHT POLE, ALUMINUM, 30 FT. M.H., 15 FT. DAVIT ARM	EACH	2.0
83600352	LIGHT POLE FOUNDATION, METAL, 11 1/2" BOLT CIRCLE, 8 5/8" X 6'	EACH	3.0
X1400094	LUMINAIRE, LED, HORIZONTAL MOUNT, LOW WATTAGE	EACH	3.0

MODEL: Default
FILE: NOKOMIS - PAVILION@REVISION1.DWG
PROJECT: PAVILION@REVISION1.DWG
DRAWN: JLD
CHECKED: JLD
DATE: 2/5/2018

USER NAME = coxte	DESIGNED -	REVISED -
PLOT SCALE = 20.0000' / in.	DRAWN -	REVISED -
PLOT DATE = 2/5/2018	CHECKED -	REVISED -
	DATE -	REVISED -

**STATE OF ILLINOIS
DEPARTMENT OF TRANSPORTATION**

**NOKOMIS - MONTGOMERY COUNTY
PLAN SHEET**

SCALE: SHEET 1 OF 2 SHEETS STA. TO STA.

F.A. RTE.	SECTION	COUNTY	TOTAL SHEETS	SHEET NO.
VAR	*	VARIOUS	33	29
				CONTRACT NO. 72K21
ILLINOIS FED. AID PROJECT				

*D6 CROSSWALK IMPROV. 2018

**STATE OF ILLINOIS
ILLINOIS DEPARTMENT OF TRANSPORTATION
LUMINAIRE PERFORMANCE TABLE – ROADWAY**

GIVEN CONDITIONS

ROADWAY DATA	Pavement Width (in one direction only)	12 FT
	Pavement Width (in opposite direction)	12 FT.
	Number of Lanes (in one direction only)	1
	Number of Lanes (in opposite direction)	1
	Median width	1 FT
	I.E.S. Surface Classification	R3
	Q-Zero Value	.07
LIGHT POLE DATA	Mounting Height	30 FT
	Mast Arm Length	15 FT.
	Pole Set-Back From Edge of Pavement	15 FT.
LUMINAIRE DATA	Luminaire Type	LED
	I.E.S. Lateral Distribution	Type III or IV
	Lamp Lumen Depreciation Factor	0.90 min
	Dirt Depreciation Factor	0.80
	Equipment Factor	0.95
	Total Light Loss Factor	0.684 min
	LAYOUT DATA	Spacing
	Configuration	Single Sided
	Luminaire Overhang over edge of pavement	0 FT.

NOTE: Variations from the above specified I.E.S. distribution pattern may be requested and acceptance of variations will be subject to review by the Engineer based on how well the performance requirements are met.

PERFORMANCE REQUIREMENTS

NOTE: These performance requirements shall be the minimum acceptable standards of photometric performance for the luminaire, based on the given conditions listed above. TM-21 and LM-80 reports must be attached and must support the Lamp Lumen Depreciation Factor given above.

ILLUMINANCE	Average Horizontal Illuminance, E_{AVE}	0.9 fc
	Uniformity Ratio, E_{AVE}/E_{MIN}	3.0:1
VEILING LUMINANCE	Veiling Luminance Ratio, L_V/L_{AVE}	0.3:1

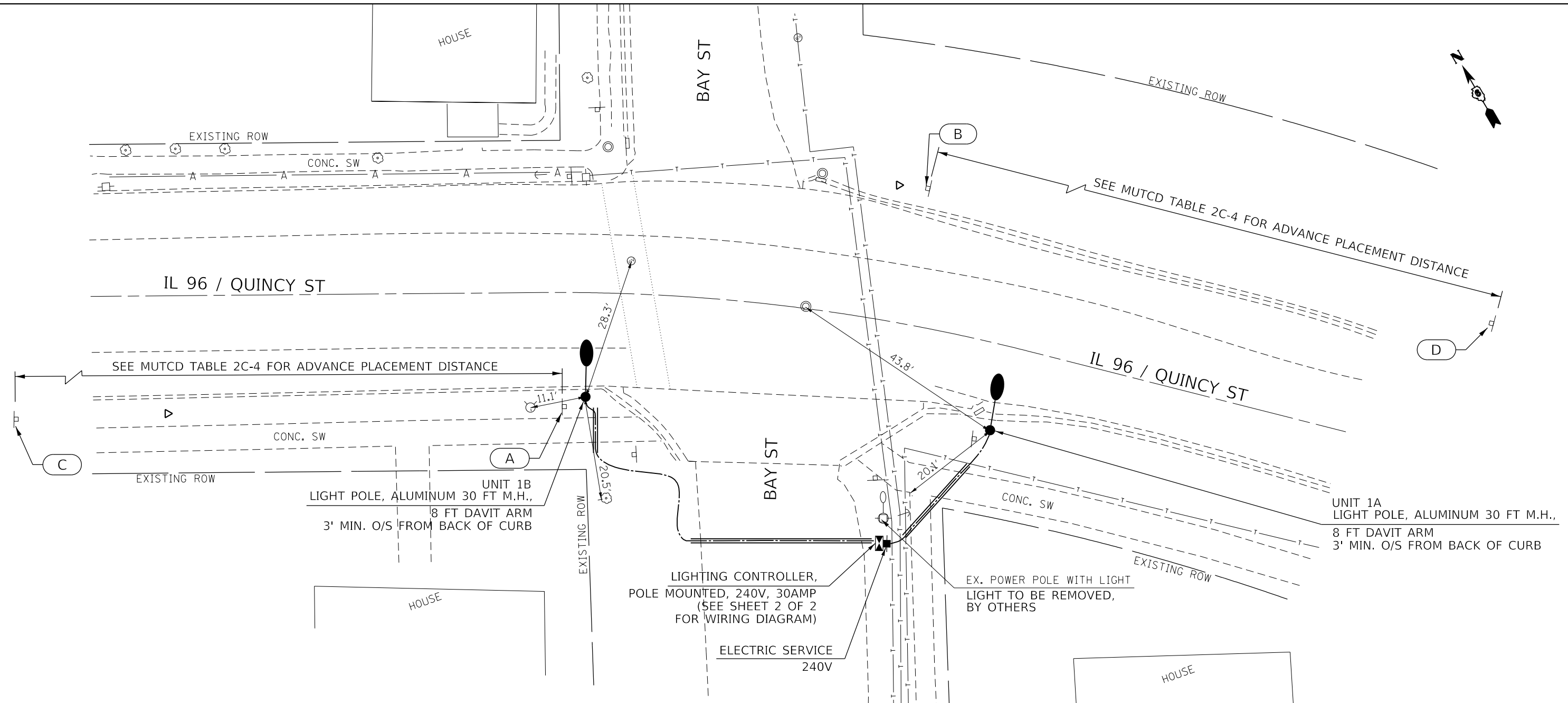
LOCATION 10

MODEL: Default
FILE NAME: P:\1108\B&E\ID\NTEC\Illinois\gov\PIW\DOT\Documents\DOT_Offices\DI\lertct @\Projects\0672K21\CADD\DATA\CAD\Sheet\0672K21_Luminaire\luminperf.dgn

USER NAME = coxte	DESIGNED -	REVISED -	STATE OF ILLINOIS DEPARTMENT OF TRANSPORTATION	NOKOMIS – MONTGOMERY COUNTY LUMINAIRE PERFORMANCE TABLE	F.A.* RTE.	SECTION	COUNTY	TOTAL SHEETS	SHEET NO.		
PLOT SCALE = 20.0000 ' / in.	DRAWN -	REVISED -			SCALE:	SHEET 2 OF 2 SHEETS	STA.	TO STA.	ILLINOIS	FED. AID PROJECT	
PLOT DATE = 2/5/2018	CHECKED -	REVISED -							VARIOUS	33	30
	DATE -	REVISED -							CONTRACT NO. 72K21		

*D6 CROSSWALK IMPROV. 2018

MODEL: Default
 FILE: Model - Pleasant Hill - Pleasant Hill.dgn
 PROJECT: Pleasant Hill - Pleasant Hill.dgn
 OFFICE: Pleasant Hill - Pleasant Hill.dgn
 CONTRACT: 72K21 - Pleasant Hill - Pleasant Hill.dgn



BILL OF MATERIALS - PLEASANT HILL (SIGNING)

LOCATION	72000100				72400100	72800100.0	73100100
	SIGN PANEL - TYPE 1				REMOVE SIGN PANEL ASSEMBLY - TYPE A	TELESCOPING STEEL SIGN SUPPORT	BASE FOR TELESCOPING STEEL SIGN SUPPORT
	S1-1	W16-9P	W16-7P(L)	RS PANEL	EACH	FOOT	EACH
IL96/QUINCY ST & BAY ST. (E & W LEG)	0.0	2.0	2.0	4.0	4.0	68.0	4.0

BILL OF MATERIALS - PLEASANT HILL (LIGHTING)

PAY ITEM	DESCRIPTION	UNIT	QUANTITY
80400100	ELECTRIC SERVICE INSTALLATION	EACH	1.0
81028750	UNDERGROUND CONDUIT, COILABLE NONMETALLIC CONDUIT, 2" DIA.	FOOT	65.0
81603010	UNIT DUCT, 600V, 2-1C NO. 10, 1/C NO. 10 GROUND, (XLP-TYPE USE), 3/4" DIA. POLYETHYLENE	FOOT	120.0
82500300	LIGHTING CONTROLLER, POLE MOUNTED, 240VOLT, 30AMP	EACH	1.0
83000300	LIGHT POLE, ALUMINUM, 30 FT. M.H., 8 FT. DAVIT ARM	EACH	2.0
83600352	LIGHT POLE FOUNDATION, METAL, 11 1/2" BOLT CIRCLE, 8 5/8" X 6"	EACH	2.0
X1400094	LUMINAIRE, LED, HORIZONTAL MOUNT, LOW WATTAGE	EACH	2.0

NOTES:

- (A) (B) REMOVE SIGN PANEL ASSEMBLY TY A, RE-USE S1-1 SIGN, ADD W16-7P(L) AND RS PANEL TO NEW TELESCOPING STEEL SIGN SUPPORT AND BASE
- (C) (D) REMOVE SIGN PANEL ASSEMBLY TY A, RE-USE S1-1 SIGN, ADD W16-9P AND RS PANEL TO NEW TELESCOPING STEEL SIGN SUPPORT AND BASE

LEGEND

- UNDERGROUND CONDUIT, COILABLE NONMETALLIC CONDUIT, 2" DIA.
- UNIT DUCT, 600V, 2-1C NO. 10, 1/C NO. 10 GROUND, (XLP-TYPE USE), 3/4" DIA. POLYETHYLENE

LOCATION 11

USER NAME = coxte	DESIGNED -	REVISED -
PLOT SCALE = 20.0000' / in.	DRAWN -	REVISED -
PLOT DATE = 2/5/2018	CHECKED -	REVISED -
	DATE -	REVISED -

**STATE OF ILLINOIS
DEPARTMENT OF TRANSPORTATION**

**PLEASANT HILL - PIKE COUNTY
PLAN SHEET**

SCALE: SHEET 1 OF 2 SHEETS STA. TO STA.

F.A. RTE.	SECTION	COUNTY	TOTAL SHEETS	SHEET NO.
	*	VARIOUS	33	31
CONTRACT NO. 72K21				
ILLINOIS FED. AID PROJECT				

*D6 CROSSWALK IMPROV. 2018

**STATE OF ILLINOIS
ILLINOIS DEPARTMENT OF TRANSPORTATION
LUMINAIRE PERFORMANCE TABLE – ROADWAY**

GIVEN CONDITIONS

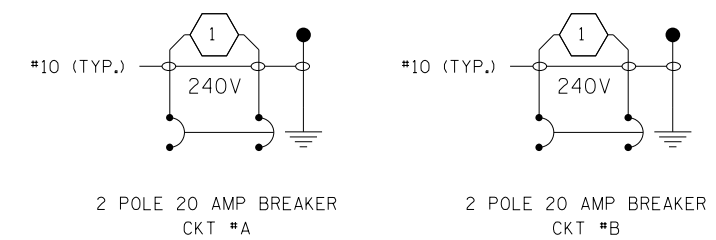
ROADWAY DATA	Pavement Width (in one direction only)	16 FT
	Pavement Width (in opposite direction)	16 FT.
	Number of Lanes (in one direction only)	1
	Number of Lanes (in opposite direction)	1
	Median width	1 FT
	I.E.S. Surface Classification	R3
	Q-Zero Value	.07
LIGHT POLE DATA	Mounting Height	30 FT
	Mast Arm Length	8 FT.
	Pole Set-Back From Edge of Pavement	7 FT.
LUMINAIRE DATA	Luminaire Type	LED
	I.E.S. Lateral Distribution	Type III or IV
	Lamp Lumen Depreciation Factor	0.90 min
	Dirt Depreciation Factor	0.80
	Equipment Factor	0.95
	Total Light Loss Factor	0.684 min
	LAYOUT DATA	Spacing
	Configuration	One sided
	Luminaire Overhang over edge of pavement	1 FT.

NOTE: Variations from the above specified I.E.S. distribution pattern may be requested and acceptance of variations will be subject to review by the Engineer based on how well the performance requirements are met.

PERFORMANCE REQUIREMENTS

NOTE: These performance requirements shall be the minimum acceptable standards of photometric performance for the luminaire, based on the given conditions listed above. TM-21 and LM-80 reports must be attached and must support the Lamp Lumen Depreciation Factor given above.

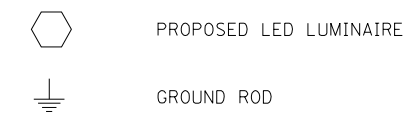
ILLUMINANCE	Average Horizontal Illuminance, E_{AVE}	0.9 fc
	Uniformity Ratio, E_{AVE}/E_{MIN}	3.0:1
VEILING LUMINANCE	Veiling Luminance Ratio, L_V/L_{AVE}	0.3:1



LIGHTING CONTROLLER
POLE MOUNT, 240V, 30AMP

NOTES:

- ALL NECESSARY REVISIONS TO THE WIRING SHOWN ON THIS SHEET SHALL BE MADE AT NO ADDITIONAL COST TO THE DEPARTMENT AND TO THE SATISFACTION OF THE ENGINEER.



WIRING DIAGRAM

MODEL: Default
FILE NAME: P:\11\08\BIDD\NTEC\Illinois\gov\PIW\DOT\Documents\DOT_Offices\Director\Projects\0672K21\CAD\data\CAD\sheet\0672K21_LF\plan-plan-Reasant\ill.dgn

LOCATION 11

USER NAME = coxte DESIGNED - DRAWN - CHECKED - DATE -	DESIGNED - REVISED - CHECKED - DATE -	REVISED - REVISED - REVISED - REVISED -	STATE OF ILLINOIS DEPARTMENT OF TRANSPORTATION	PLEASANT HILL – PIKE COUNTY LUMINAIRE PERFORMANCE TABLE	F.A.* RTE.	SECTION	COUNTY	TOTAL SHEETS	SHEET NO.
					VAR	*	VARIOUS	33	32
PLOT SCALE = 20.0000 ' / in. PLOT DATE = 2/5/2018					SCALE: SHEET 2 OF 2 SHEETS STA. TO STA. ILLINOIS FED. AID PROJECT				

*D6 CROSSWALK IMPROV. 2018



S1-1
36" x 36"
9.0 SQ. FT.
SIGN PANEL - TYPE 1



W11-2
30" x 30"
6.3 SQ. FT.
SIGN PANEL - TYPE 1



W11-1
30" x 30"
6.3 SQ. FT.
SIGN PANEL - TYPE 1



W16-9P
24" x 12"
2.0 SQ. FT.
SIGN PANEL - TYPE 1



W16-7P(L)
21" x 15"
2.2 SQ. FT.
SIGN PANEL - TYPE 1

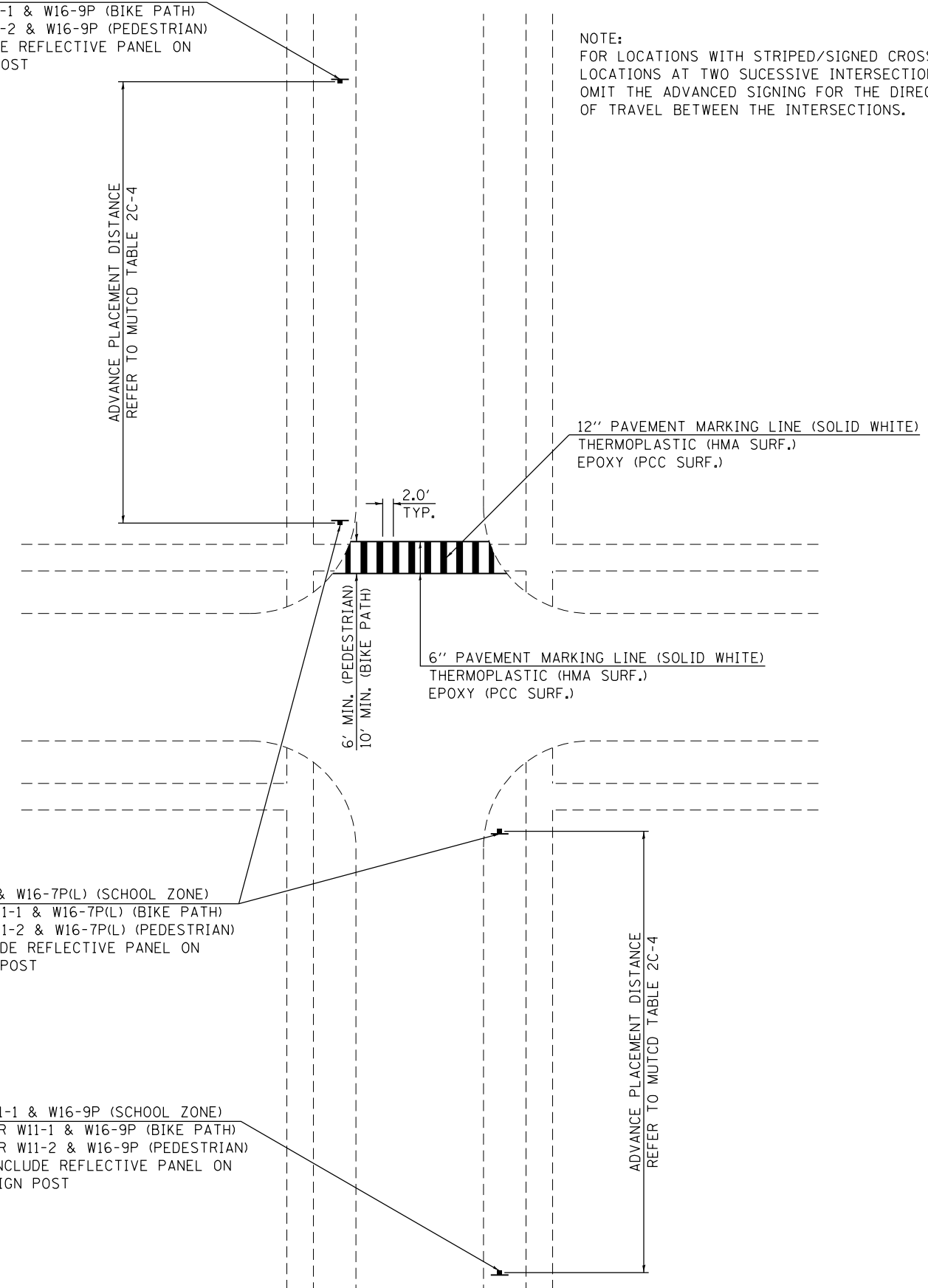


W16-7P(R)
21" x 15"
2.2 SQ. FT.
SIGN PANEL - TYPE 1



RS PANEL - FLUORESCENT GREEN
(RETROREFLECTIVE PANEL)
2" x 84"
1.2 SQ. FT.
SIGN PANEL - TYPE 1

S1-1 & W16-9P (SCHOOL ZONE)
OR W11-1 & W16-9P (BIKE PATH)
OR W11-2 & W16-9P (PEDESTRIAN)
INCLUDE REFLECTIVE PANEL ON
SIGN POST



NOTE:
FOR LOCATIONS WITH STRIPED/SIGNED CROSSWALK
LOCATIONS AT TWO SUCCESSIVE INTERSECTIONS,
OMIT THE ADVANCED SIGNING FOR THE DIRECTION(S)
OF TRAVEL BETWEEN THE INTERSECTIONS.

S1-1 & W16-7P(L) (SCHOOL ZONE)
OR W11-1 & W16-7P(L) (BIKE PATH)
OR W11-2 & W16-7P(L) (PEDESTRIAN)
INCLUDE REFLECTIVE PANEL ON
SIGN POST

S1-1 & W16-9P (SCHOOL ZONE)
OR W11-1 & W16-9P (BIKE PATH)
OR W11-2 & W16-9P (PEDESTRIAN)
INCLUDE REFLECTIVE PANEL ON
SIGN POST

TYPICAL SIGN PLACEMENT

MODEL: Default
FILE NAME: p:\u0008\B&E\ID\NTEC\Illinois\pov\PIV\DOT\Documents\1\DOT\Office\Bldg\11\CAD\data\CAD\sheet\0672K21-rft-detailed.dgn

USER NAME = coxte	DESIGNED -	REVISED -
PLOT SCALE = 40.0000 ' / in.	DRAWN -	REVISED -
PLOT DATE = 2/5/2018	CHECKED -	REVISED -
	DATE -	REVISED -

STATE OF ILLINOIS
DEPARTMENT OF TRANSPORTATION

SIGN AND PLACEMENT DETAILS

SCALE: SHEET OF SHEETS STA. TO STA.

F.A.* RTE.	SECTION	COUNTY	TOTAL SHEETS	SHEET NO.
	*	VARIOUS	33	33
			CONTRACT NO. 72K21	
			ILLINOIS FED. AID PROJECT	

* D6 CROSSWALK IMPROV. 2018