

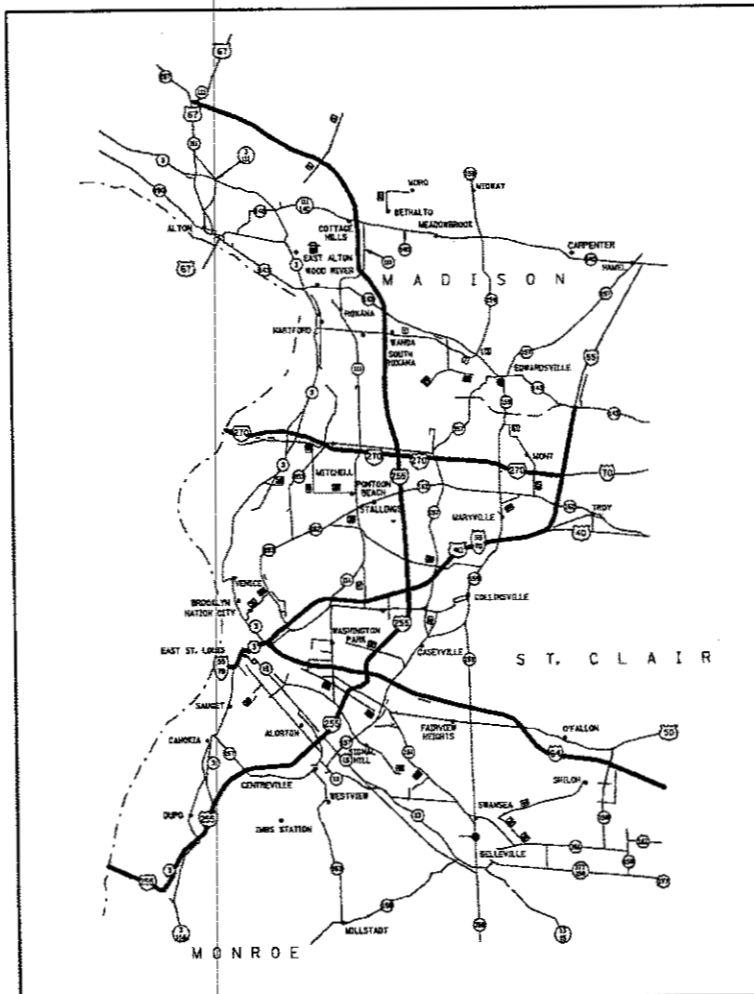
04-27-2018 LETTING ITEM 109

STATE OF ILLINOIS  
DEPARTMENT OF TRANSPORTATION

PROPOSED  
HIGHWAY PLANS

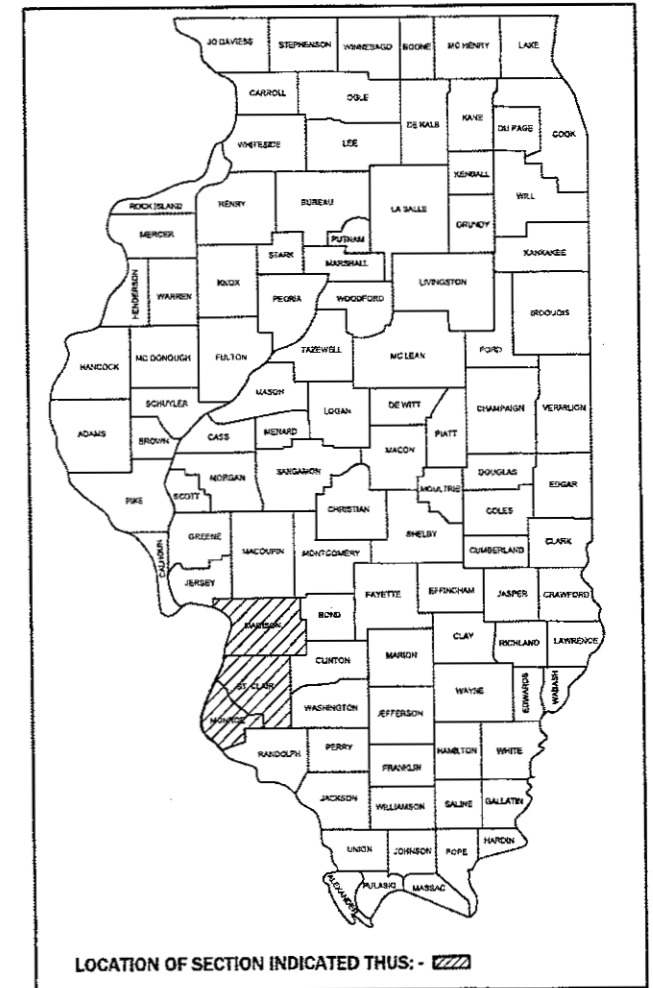
VARIOUS ROUTES  
DIST 8 WEED SPRAYING 2018-1  
WEED SPRAYING  
VARIOUS COUNTIES

C-98-067-17



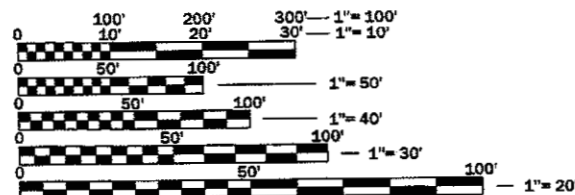
F.A. RTE.	SECTION	COUNTY	TOTAL SHEETS	SHEET NO.
*	**	VARIOUS	7	1
		ILLINOIS	CONTRACT NO. 76K72	

\* VARIOUS  
\*\* DIST 8 WEED SPRAYING 2018-1  
D-98-103-17



INDEX OF SHEETS

1. COVER SHEET, INDEX OF SHEETS, MAP
2. HIGHWAY STANDARDS, SPRAY SCHEDULE, AND COMMITMENTS
3. SUMMARY OF QUANTITIES
- 4.-7. OMISSIONS/NO SPRAY SITES



FULL SIZE PLANS HAVE BEEN PREPARED USING STANDARD ENGINEERING SCALES. REDUCED SIZED PLANS WILL NOT CONFORM TO STANDARD SCALES. IN MAKING MEASUREMENTS ON REDUCED PLANS, THE ABOVE SCALES MAY BE USED.

J.U.L.I.E.  
JOINT UTILITY LOCATION INFORMATION FOR EXCAVATION  
1-800-892-0123  
OR 811

PROJECT ENGINEER: HERVE GELIN (618) 346-3179  
SQUAD LEADER: BILLIE OWEN (618) 346-3209  
PROJECT MANAGER: AL SCHULER (618) 349-2188

CONTRACT NO. 76K72

STATE OF ILLINOIS  
DEPARTMENT OF TRANSPORTATION

SUBMITTED February 13 2018  
*Jeffrey Z. Kern*  
REGIONAL ENGINEER

March 23 2018  
*Paul P. Chalk*  
ENGINEER OF DESIGN AND ENVIRONMENT

March 23 2018  
*Paul P. Chalk*  
DIRECTOR OF HIGHWAYS PROJECT IMPLEMENTATION

PRINTED BY THE AUTHORITY  
OF THE STATE OF ILLINOIS



100 %  
STATE

CODE NO.	ITEM	UNIT	TOTAL QUANTITY	CONSTR. CODE
				0031
67100100	MOBILIZATION	LSUM	1	1
K0012950	HERBICIDE SPRAYING	ACRE	1370	1370

FILE NAME =	USER NAME = lewiska	DESIGNED -	REVISED -
pw\11084EBID\INTEG\Illinois.gov\PWIDOT\Documents\DOT Office\District 8\Projects\08750\Drawings\AD\Sheets\0876K72-shr-plan.dwg	PLT SCALE = 100.0000' / in.	CHECKED -	REVISED -
Default	PLT DATE = 5/17/2017	DATE -	REVISED -

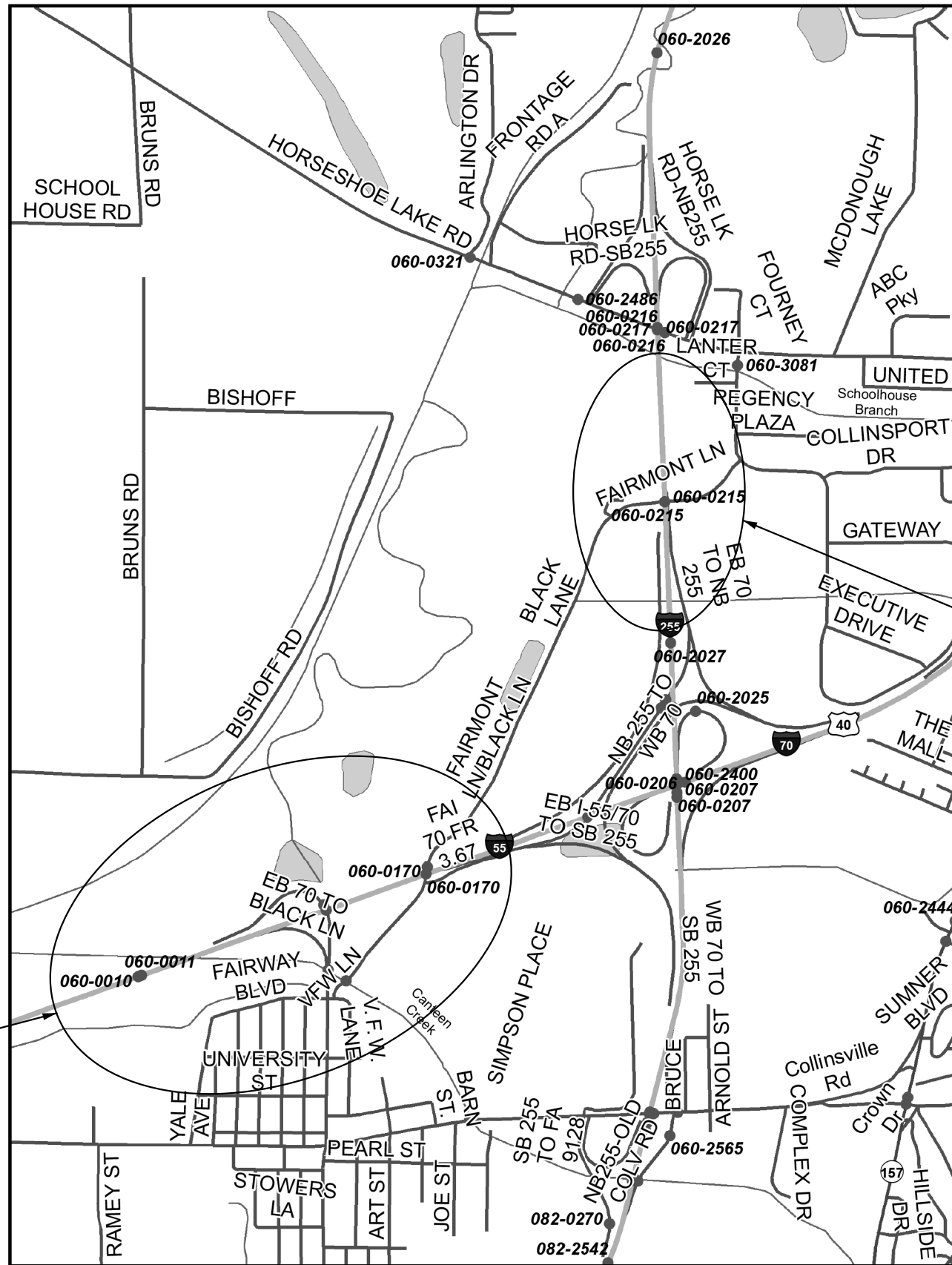
**STATE OF ILLINOIS  
DEPARTMENT OF TRANSPORTATION**

**SUMMARY OF QUANTITIES**

SCALE: SHEET OF SHEETS STA. TO STA.

- VARIOUS
- DIST 8 WEED SPRAYING 2018-1

F.A. RTE.	SECTION	COUNTY	TOTAL SHEETS	SHEET NO.
*	**	MADISON	7	3
ILLINOIS FED. AID PROJECT			CONTRACT NO. 76K72	



DO NOT SPRAY

DO NOT SPRAY

MADISON COUNTY  
LEVEE LAKE  
SECTION 36, T3N-R9W

- VARIOUS
- DIST 8 WEED SPRAYING 2018-1

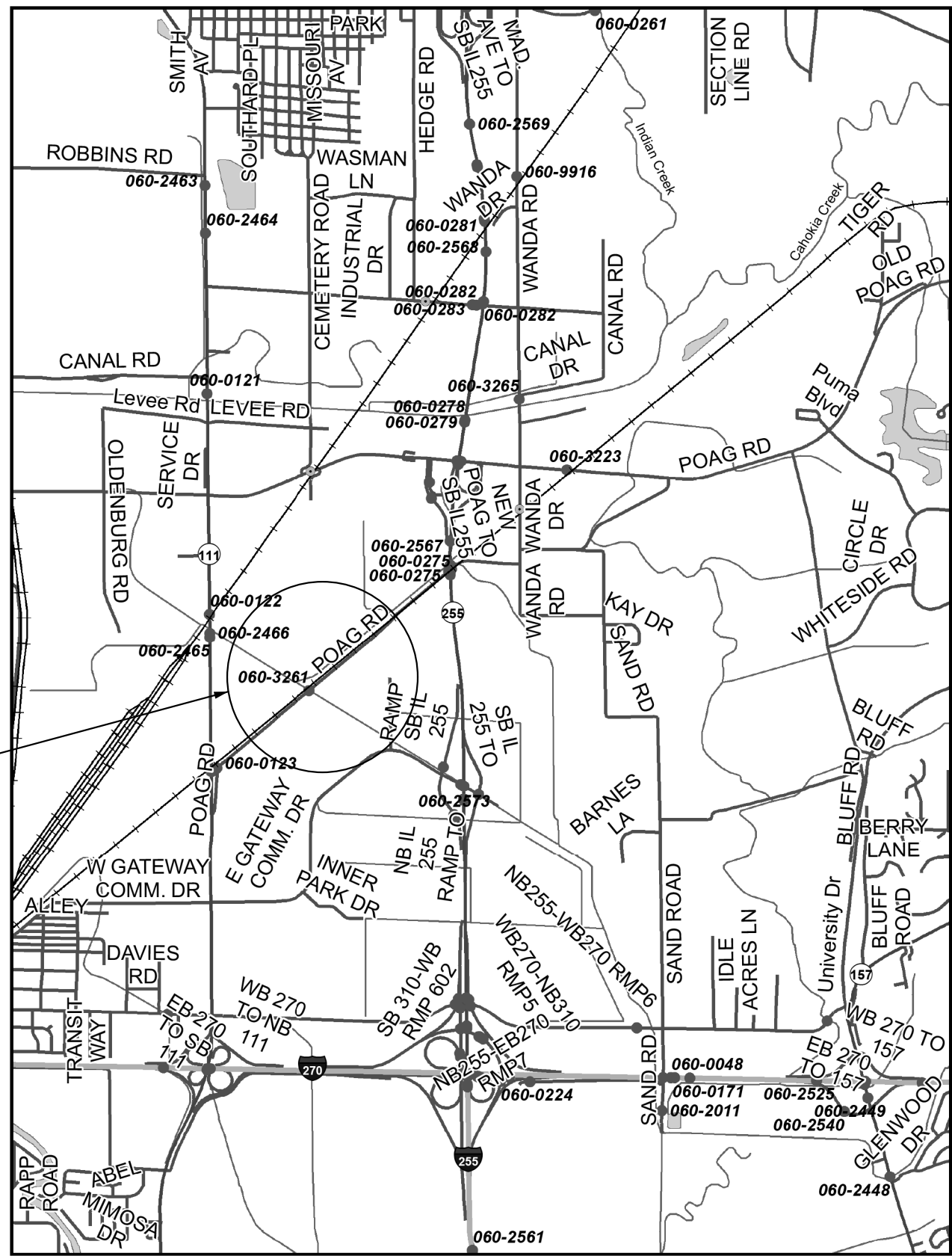
FILE NAME =	USER NAME = lewiska	DESIGNED -	REVISED -
pw:\IL\084EBID\INTEG\illinois.gov\PWIDOT\Documents\DOT Offices\District 8\Projects\0876\DRAWING\DATA\6A0\sheets\0876K72-sht.plandg		REVISIONS	REVISIONS
Default	PLOT SCALE = 100.0000' / in.	CHECKED -	REVISED -
	PLOT DATE = 5/17/2017	DATE -	REVISED -

**STATE OF ILLINOIS  
DEPARTMENT OF TRANSPORTATION**

**OMISSIONS NAMEOKI AND  
GRANITE CITY TOWNSHIP**

SCALE: SHEET OF SHEETS STA. TO STA.

RT.	SECTION	COUNTY	TOTAL SHEETS	SHEET NO.
•	••	VARIOUS	7	4
CONTRACT NO. 76K72				
ILLINOIS FED. AID PROJECT				

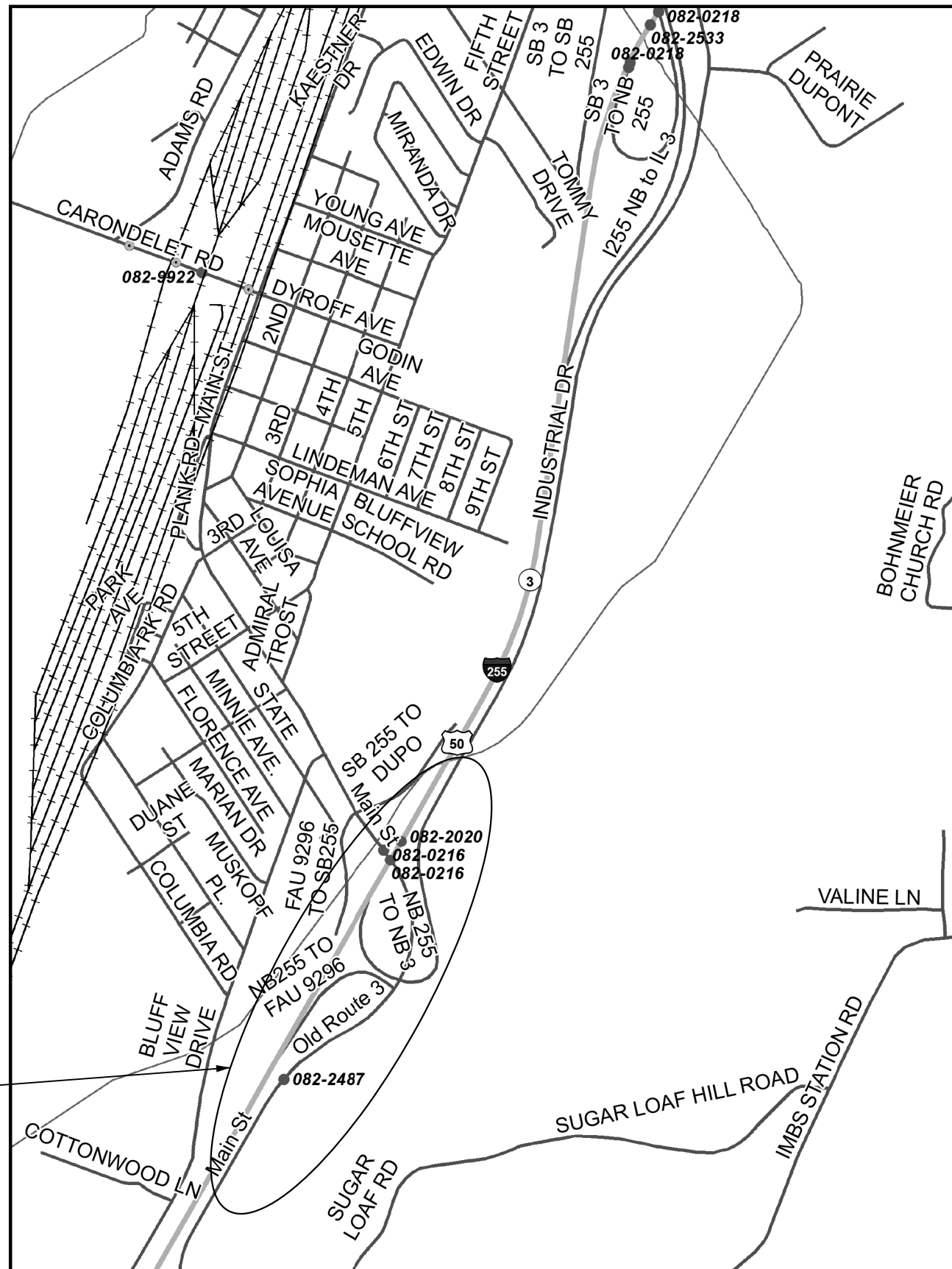


DO NOT SPRAY

MADISON COUNTY  
 POAG R.R. PRAIRIE  
 SECTION 24, T4N-R9W

- VARIOUS
- DIST 8 WEED SPRAYING 2018-1

FILE NAME =	USER NAME = lewiska	DESIGNED -	REVISED -	<b>STATE OF ILLINOIS DEPARTMENT OF TRANSPORTATION</b>	<b>OMISSONS CHOUTEAU &amp; GRANITE CITY TOWNSHIP</b>	SCALE:	SHEET	OF	SHEETS	STA.	TO	STA.	RT.	SECTION	COUNTY	TOTAL SHEETS	SHEET NO.		
pw:\IL\084EBIDINTEG\illinois.gov\PIDOT\Documents\IDOT Offices\District 8\Projects\0875\DRAWING\DATA\EA0\Sheets\0875K72-sht-plan.dwg		DRAWN	REVISED			•	••										VARIOUS	7	5
Default		CHECKED	REVISED			CONTRACT NO. 76K72													
	PLOT DATE = 5/17/2017	DATE	REVISED			ILLINOIS FED. AID PROJECT													



DO NOT SPRAY

ST. CLAIR COUNTY  
 DUPO PRAIRIE/SUGAR LOAF PRAIRIE  
 SECTION 27 & 28, T1N-R10W

- VARIOUS
- DIST 8 WEED SPRAYING 2018-1

FILE NAME =	USER NAME = lewiska	DESIGNED -	REVISED -
pw:\IL\084EBID\INTEG\illinois.gov\PWIDOT\Documents\IDOT Offices\District 8\Projects\0876\DRAWING\DATA\60\Sheets\0876K72-sht-plandg		REVISIONS	REVISIONS
Default	PLOT SCALE = 100.0000' / in.	CHECKED -	REVISED -
	PLOT DATE = 5/17/2017	DATE -	REVISED -

STATE OF ILLINOIS  
 DEPARTMENT OF TRANSPORTATION

OMISSIONS  
 SUGAR LOAF TOWNSHIP

SCALE: SHEET OF SHEETS STA. TO STA.

F.A. RTE.	SECTION	COUNTY	TOTAL SHEETS	SHEET NO.
•	••	MADISON	7	6
			CONTRACT NO. 76K72	
ILLINOIS FED. AID PROJECT				

