

STATE OF ILLINOIS
DEPARTMENT OF TRANSPORTATION
DIVISION OF HIGHWAYS

**PROPOSED
HIGHWAY PLANS**

FOR INDEX OF SHEETS AND HIGHWAY STANDARDS, SEE SHEET NO. 2

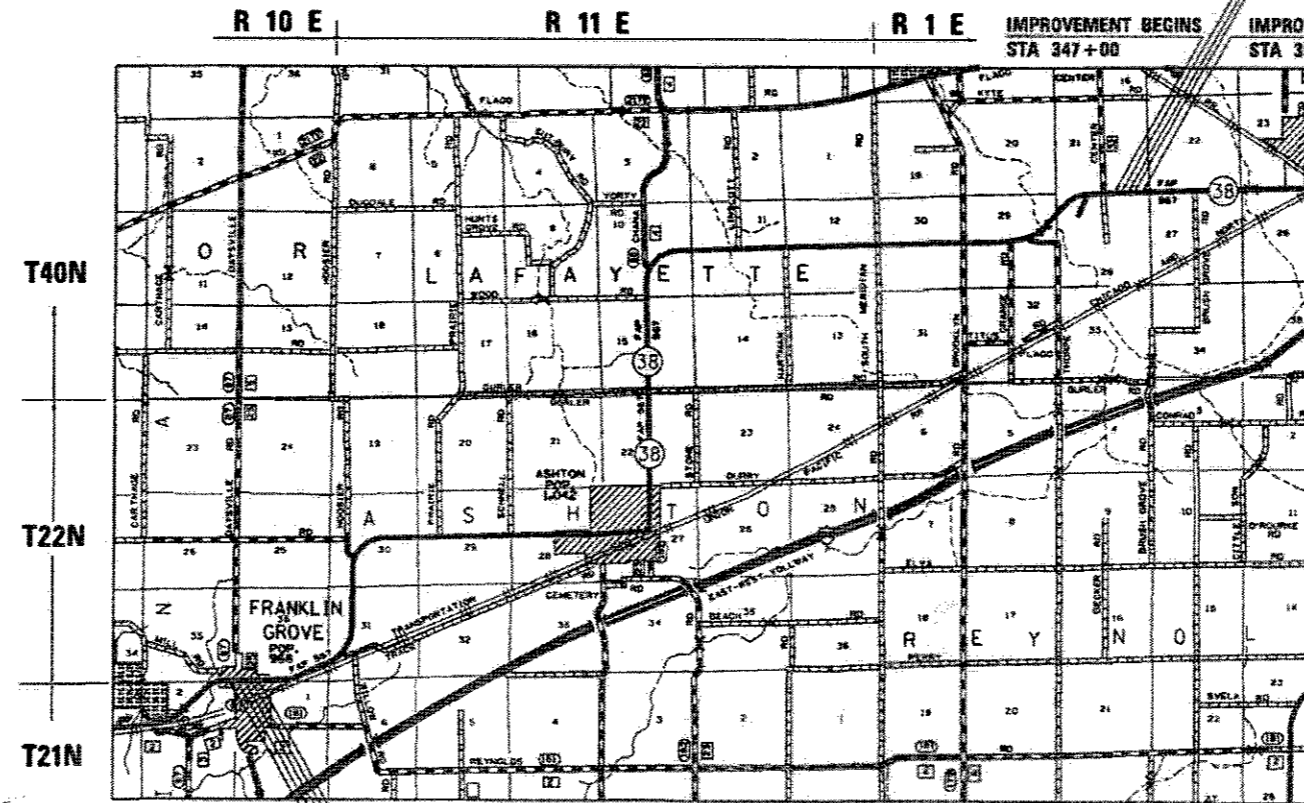
F.A.P. ROUTE 567 (IL 38)
SECTION (10, 12) T-1
PROJECT STP-4HPT(088)
CULVERT REMOVAL & REPLACEMENT
LEE & OGLE COUNTY

C-92-015-13

REMOVAL & REPLACEMENT OF EXISTING BOX CULVERT
WITH 9X2 DOUBLE BOX CULVERT
EXISTING SN 071-1191; PROPOSED SN 071-1235

SECTION BEGINS STA 348+67.50 SECTION ENDS STA 349+12

IMPROVEMENT BEGINS STA 347+00 IMPROVEMENT ENDS STA 351+00

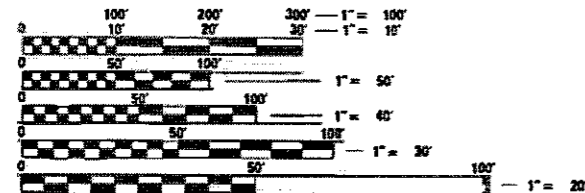


IMPROVEMENT BEGINS STA 495+80 IMPROVEMENT ENDS STA 498+95

SECTION BEGINS STA 496+82.50 SECTION ENDS STA 498+13

REMOVAL & REPLACEMENT
OF EXISTING BOX
CULVERT WITH 6X2
DOUBLE BOX CULVERT
EXISTING SN 052-1107
PROPOSED SN 052-1129

GROSS LENGTH = 175 FT. = 0.033 MILE
NET LENGTH = 175 FT. = 0.033 MILE



FULL SIZE PLANS HAVE BEEN PREPARED USING STANDARD
ENGINEERING SCALES. REDUCED SIZED PLANS WILL NOT
CONFORM TO STANDARD SCALES. IN MAKING MEASUREMENTS
ON REDUCED PLANS, THE ABOVE SCALES MAY BE USED.

J.U.L.I.E.
JOINT UTILITY LOCATION INFORMATION FOR EXCAVATION
1-800-892-0123
OR 811

FRANKLIN GROVE TOWNSHIP : SECTION 1 & 36
FLAGG TOWNSHIP : SECTIONS 21 & 28

PROJECT ENGINEER : MATHEW DOBIE
SQUAD LEADER : THOMAS HALLA (815)-284-5993

CONTRACT NO. 64H59

* 67+4=71 TOTAL SHEETS

D-92-031-12



LOCATION OF SECTION INDICATED THUS: -

STATE OF ILLINOIS
DEPARTMENT OF TRANSPORTATION
DIVISION OF HIGHWAYS

SUBMITTED *Jan 24 2018*
[Signature]
DEPUTY DIRECTOR OF HIGHWAYS, REGION ENGINEER

Mar 23 2018
[Signature]
ENGINEER OF DESIGN AND ENVIRONMENT

Mar 23 2018
[Signature]
DIRECTOR OF HIGHWAYS PROJECT IMPLEMENTATION

PRINTED BY THE AUTHORITY
OF THE STATE OF ILLINOIS

DISTRICT 2, DIXON

REV 4-12-18

INDEX OF SHEETS AND STANDARDS

INDEX

SHEET NO	DESCRIPTION
1	COVER SHEET
2	INDEX OF SHEETS / STATE STANDARDS
3-4	GENERAL NOTES
5-10	SUMMARY OF QUANTITIES
11-13	TYPICAL SECTIONS
14-18A	SCHEDULE OF QUANTITIES
19-25	HORIZONTAL AND VERTICAL CONTROL
26-28	ADA RAMP DETAILS
29	BOX CULVERT PLAN SN 052-1107 LEE COUNTY
30	BOX CULVERT PLAN SN 071-1191 OGLE COUNTY
31-32	EROSION CONTROL AND SEEDING DETAILS
33-34A	SOIL BORING LOGS
35-36	STAGING PLANS
37-38	DELETED
39	RIP RAP AT END SECTIONS (DS 19.4)
39	GRADING AROUND WINGWALLS (DS 20.4)
39	HOT-MIX ASPHALT SHOULDER (DS 22.4)
39	CAST IN PLACE REINFORCED CONCRETE END SECTION (DS 28.4)
40	DELINEATOR AND POST ORIENTATION (DS 37.4)
41	FIELD TILE JUNCTION VAULTS 2' AND 3' DIAMETER (DS 30.2)
41	HOT-MIX ASPHALT APPROACHES AND MAILBOX RETURNS FOR 2 LIFT (3P) RESURFACING PROJECTS (DS 47.2)
42	WITNESS MARKER FOR PERMANENT SURVEY MARKERS, TYPE II (DS 66.2)
43-44	BOX CULVERT END SECTIONS (DS 10.1)
45-46	TRAVERSABLE PIPE GRATE FOR BOX CULVERT END SECTIONS (DS 13.1)
47-50	WORK ZONE SIGN DETAILS (DS 34.1)
51	TRAFFIC CONTROL FOR ROAD CLOSURE (DS 40.1)
52-54	TYPICAL PAVEMENT MARKINGS (DS 41.1)
55	DETAILS OF PLANTING AND BRACING TREES (DS 92.1)
56-69	CROSS SECTIONS

STATE STANDARDS

SHEET NO	DESCRIPTION
000001-06	STANDARD SYMBOLS, ABBREVIATIONS, AND PATTERNS
420001-09	PAVEMENT JOINTS
420111-04	PCC PAVEMENT ROUNDOUTS
420701-03	PAVEMENT FABRIC
424001-10	PERPENDICULAR CURB RAMPS FOR SIDEWALKS
424006-03	DIAGONAL CURB RAMPS FOR SIDEWALKS
424011-03	CORNER PARALLEL CURB RAMPS FOR SIDEWALKS
424021-04	DEPRESSED CORNER FOR SIDEWALKS
424026-02	ENTRANCE/ALLEY PEDESTRIAN CROSSINGS
442101-08	CLASS B PATCHES
442201-03	CLASS C AND D PATCHES
482001-02	HMA SHOULDERS ADJACENT TO FLEXIBLE PAVEMENT
515001-03	NAME PLATES FOR BRIDGES
542001-06	CONCRETE END SECTIONS FOR PIPE CULVERTS 15" (375MM) THRU 84" (2100MM) DIAMETER
542311-07	TRAVERSABLE PIPE GRATE
602401-04	MANHOLE, TYPE A
604001-04	FRAME AND LIDS, TYPE 1
635001-02	DELINEATORS
667101-02	PERMANENT SURVEY MARKERS
701001-02	OFF-ROAD OPERATIONS, 2L, 2W, MORE THAN 15' (4.5 m) AWAY
701006-05	OFF-ROAD OPERATIONS, 2L, 2W, 600MM(24") TO 4.5M(15') FROM PAVEMENT EDGE
701011-04	OFF-ROAD MOVING OPERATIONS, 2L, 2W, DAY ONLY
701201-04	LANE CLOSURE, 2L, 2W, DAY ONLY, FOR SPEEDS ≥ 45 MPH
701301-04	LANE CLOSURE, 2L, 2W, SHORT TIME OPERATIONS
701306-04	LANE CLOSURE, 2L, 2W, SLOW MOVING OPERATIONS DAY ONLY FOR SPEEDS < 45 MPH
701311-03	LANE CLOSURE, 2L, 2W, MOVING OPERATIONS DAY ONLY
701501-06	URBAN LANE CLOSURE, 2L 2W, UNDIVIDED
701801-06	SIDEWALK, CORNER OR CROSSWALK CLOSURE
701901-07	TRAFFIC CONTROL DEVICES
720011-01	METAL POST FOR SIGNS, MARKERS AND DELINEATORS
728001-01	TELESCOPING STEEL SIGN SUPPORT
729001-01	APPLICATIONS OF TYPES A AND B METAL POST (FOR SIGNS & MARKERS)
780001-05	TYPICAL PAVEMENT MARKINGS
781001-04	TYPICAL APPLICATIONS RAISED REFLECTIVE PAVEMENT MARKERS

MODEL: Default
 FILE: \\VME-SP1\U04548B\INTEG_Bldgns\app\NWD\DOT\Documents\DOT_Offices\Bldgnt_2\Projects\p203112\CADD\Bldgnt\CAD\Bldgnt\0312-IN-SEC\Index.dgn

USER NAME = batesr1	DESIGNED -	REVISED -
	DRAWN -	REVISED -
PLOT SCALE = 100.0000' / in.	CHECKED -	REVISED -
PLOT DATE = Feb-02-2018 09:10:54 AM	DATE -	REVISED -

**STATE OF ILLINOIS
DEPARTMENT OF TRANSPORTATION**

**INDEX OF SHEETS
HIGHWAY STANDARDS**

SCALE:	SHEET	OF	SHEETS	STA.	TO STA.
--------	-------	----	--------	------	---------

F.A. RTE.	SECTION	COUNTY	TOTAL SHEETS	SHEET NO.
567	(10.12)T-1	LEE/OGLE	67	2
CONTRACT NO. 64H59				
ILLINOIS FED. AID PROJECT				

A REV 4-12-18

SUMMARY OF QUANTITIES

CODE NO.	ITEM	UNIT	TOTAL QUANTITY	0004	0004	0021
				OGLE COUNTY 80% Fed 20% State	LEE COUNTY 80% Fed 20% State	LEE COUNTY 100% State
20100110	TREE REMOVAL (6 TO 15 UNITS DIAMETER)	UNIT	12		12	
20200100	EARTH EXCAVATION	CU YD	543	92	451	
21101615	TOPSOIL FURNISH AND PLACE, 4"	SQ YD	533		533	
25000210	SEEDING, CLASS 2A	ACRE	0.5	0.5		
25000310	SEEDING, CLASS 4	ACRE	0.5	0.5		
# 25000750	MOWING	ACRE	1.0	1.0		
28000250	TEMPORARY EROSION CONTROL SEEDING	POUND	300	300		
25100630	EROSION CONTROL BLANKET	SQ YD	4017	4017		
25200110	SODDING, SALT TOLERANT	SQ YD	4453		4453	
28000305	TEMPORARY DITCH CHECKS	FOOT	126	30	96	
28000400	PERIMETER EROSION BARRIER	FOOT	610	300	310	
28000500	INLET AND PIPE PROTECTION	EACH	2		2	
28100107	STONE RIPRAP, CLASS 4A	SQ YD	219	80	139	
28200200	FILTER FABRIC	SQ YD	219	80	139	
30300112	AGGREGATE SUBGRADE IMPROVEMENT 12"	SQ YD	236		236	

* SPECIALTY ITEM
NON-PARTICIPATING 100% STATE

MODEL Path: C:\Users\Bates\Documents\DOT_0ffices\District 2\Projects\2011\2\CAD\Bates\CAD\Bates\2011\2\shits-schedule.dgn
FILE NAME: C:\Users\Bates\Documents\DOT_0ffices\District 2\Projects\2011\2\CAD\Bates\CAD\Bates\2011\2\shits-schedule.dgn

USER NAME = batesd	DESIGNED -	REVISED -	STATE OF ILLINOIS DEPARTMENT OF TRANSPORTATION	SUMMARY OF QUANTITIES				F.A. RTE. 567	SECTION (10,12)T-1	COUNTY LEE/OGLE	TOTAL SHEETS 67	SHEET NO. 5
PLOT SCALE = 100.0000' / in.	CHECKED -	REVISED -						SCALE: SHEET OF SHEETS STA. TO STA.				CONTRACT NO. 64H59
PLOT DATE = Feb-16-2018 11:41:04 AM	DATE -	REVISED -		ILLINOIS FED. AID PROJECT								
REV 4-12-18												

SUMMARY OF QUANTITIES

CODE NO.	ITEM	UNIT	TOTAL QUANTITY	0004	0004	0021
				OGLE COUNTY 80% Fed 20% State	LEE COUNTY 80% Fed 20% State	LEE COUNTY 100% State
35101400	AGGREGATE BASE COURSE, TYPE B	TON	167	87	80	
40600290	BITUMINOUS MATERIALS (TACK COAT)	POUND	171	53	118	
40600625	LEVELING BINDER (MACHINE METHOD), N50	TON	31	9	22	
40600990	TEMPORARY RAMP	SQ YD	56	28	28	
40603310	HOT- MIX ASPHALT SURFACE COURSE, MIX "C", N50	TON	53	16	37	
42400200	PORTLAND CEMENT CONCRETE SIDEWALK 5"	SQ FT	1100			1100
42400800	DETECTABLE WARNINGS	SQ FT	41			41
44000500	COMBINATION CURB AND GUTTER REMOVAL	FOOT	335			335
44000600	SIDEWALK REMOVAL	SQ FT	720			720
44201359	CLASS C PATCHES, TYPE IV, 10 INCH	SQ YD	746	222	524	
48101600	AGGREGATE SHOULDERS, TYPE B 8"	SQ YD	622	622		
50100300	REMOVAL OF EXISTING STRUCTURES NO. 1	EACH	1	1		
50100400	REMOVAL OF EXISTING STRUCTURES NO. 2	EACH	1		1	
51500100	NAME PLATES	EACH	2	1	1	
52200020	TEMPORARY SOIL RETENTION SYSTEM	SQ FT	700		700	

* SPECIALTY ITEM
NON-PARTICIPATING 100% STATE

MODEL: Default
FILE NAME: \\pwwd01\Documents\DOT - Office\Project 2\Projects\2011\2\CAD\Drawings\CAD\Sheet\200112\Sheet\6.dwg

USER NAME = batesr PLOT SCALE = 100.0000' / in. PLOT DATE = Feb-16-2018 11:41:17 AM	DESIGNED - DRAWN - CHECKED - DATE -	REVISED - REVISED - REVISED - REVISED -	STATE OF ILLINOIS DEPARTMENT OF TRANSPORTATION	SUMMARY OF QUANTITIES	F.A. RTE. 567	SECTION (10.12)T-1	COUNTY LEE/OGLE	TOTAL SHEETS 67	SHEET NO. 6
SCALE: SHEET OF SHEETS STA. TO STA.				ILLINOIS FED. AID PROJECT					

REV 4-12-19

SUMMARY OF QUANTITIES

CODE NO.	ITEM	UNIT	TOTAL QUANTITY	0004	0004	0021
				OGLE COUNTY 80% Fed 20% State	LEE COUNTY 80% Fed 20% State	LEE COUNTY 100% State
61140000	STORM SEWER (SPECIAL), 8"	FOOT	20	20		
61140100	STORM SEWER (SPECIAL), 10"	FOOT	20	20		
61140200	STORM SEWER (SPECIAL), 12"	FOOT	20	20		
63500105	DELINEATORS	EACH	4	2	2	
66600105	FURNISHING AND ERECTING RIGHT OF WAY MARKERS	EACH	4	4		
* 66700305	PERMANENT SURVEY MARKERS, TYPE II	EACH	2	1	1	
67000400	ENGINEER'S FIELD OFFICE, TYPE A	CAL MO	4		4	
67100100	MOBILIZATION	L SUM	1	0.5	0.5	
70100450	TRAFFIC CONTROL AND PROTECTION, STANDARD 701201	L SUM	1	1		
70100460	TRAFFIC CONTROL AND PROTECTION, STANDARD 701306	L SUM	1	1		
70102620	TRAFFIC CONTROL AND PROTECTION, STANDARD 701501	L SUM	1		1	
70102640	TRAFFIC CONTROL AND PROTECTION, STANDARD 701801	L SUM	1		1	
70106500	TEMPORARY BRIDGE TRAFFIC SIGNALS	EACH	1		1	
70300100	SHORT TERM PAVEMENT MARKING	FOOT	195	85	110	

* SPECIALTY ITEM
NON-PARTICIPATING 100% STATE

MODEL: Expire FILE NAME: C:\WORK\PROJECTS\64H59\PROJECT\64H59\SUMMARY OF QUANTITIES.DWG PLOT DATE: 2/16/2018 11:42:30 AM

USER NAME = batesr1 PLOT SCALE = 100.0000 / in. PLOT DATE = Feb-16-2018 11:42:30 AM	DESIGNED - DRAWN - CHECKED - DATE -	REVISED - REVISED - REVISED - REVISED -	STATE OF ILLINOIS DEPARTMENT OF TRANSPORTATION	SUMMARY OF QUANTITIES	F.A. RATE: 567 SECTION: (10.12)-1 COUNTY: LEE/OGLE TOTAL SHEETS: 67 SHEET NO.: 9 CONTRACT NO. 64H59 ILLINOIS FED. AID PROJECT
			SCALE:	SHEET OF SHEETS STA. TO STA.	

REV 4-12-18

SUMMARY OF QUANTITIES

CODE NO.	ITEM	UNIT	TOTAL QUANTITY	0004	0004	0021
				OGLE COUNTY 80% Fed 20% State	LEE COUNTY 80% Fed 20% State	LEE COUNTY 100% State
70300150	SHORT TERM PAVEMENT MARKING REMOVAL	SQ FT	66	29	37	
70300220	TEMPORARY PAVEMENT MARKING - LINE 4"	FOOT	900		900	
78001110	PAINT PAVEMENT MARKING - LINE 4"	FOOT	442	172	270	
70400100	TEMPORARY CONCRETE BARRIER	FOOT	300		300	
78001150	PAINT PAVEMENT MARKING - LINE 12"	FOOT	92		92	
70400200	RELOCATE TEMPORARY CONCRETE BARRIER	FOOT	300		300	
A2002912	TREE, CELTIS OCCIDENTALIS (COMMON HACKBERRY), 1-1/2" CALIPER, BALLED AND BURLAPPED	EACH	6		6	
70600241	IMPACT ATTENUATORS, TEMPORARY (NON-REDIRECTIVE, NARROW) TEST LEVEL 2	EACH	2		2	
A2001012	TREE, ACER RUBRUM (RED MAPLE), 1-1/2" CALIPER, BALLED AND BURLAPPED	EACH	6		6	
70600341	IMPACT ATTENUATORS, RELOCATE (NON-REDIRECTIVE, NARROW) TEST LEVEL 2	EACH	2		2	
X0327576	TEMPORARY PATCHING	SQ YD	210	72	138	
X0327980	PAVEMENT MARKING REMOVAL - WATER BLASTING	FOOT	450		450	
X1400025	JUNCTION BOX COVER	EACH	2		2	
X4400110	TEMPORARY PAVEMENT REMOVAL	SQ YD	96		96	
Z0013798	CONSTRUCTION LAYOUT	L SUM	1	0.5	0.5	
Z0017099	DOWEL BAR ASSEMBLY	EACH	24	6	18	
Z0054400	ROCK FILL	CU YD	133	133		
Z0062456	TEMPORARY PAVEMENT	SQ YD	96		96	

* SPECIALTY ITEM
NON-PARTICIPATING 100% STATE

MODEL: D:\temp\...
 FILE NAME: ...

USER NAME - batesr	DESIGNED -	REVISED -
	DRAWN -	REVISED -
PLOT SCALE - 100,0000' / in.	CHECKED -	REVISED -
PLOT DATE - Feb-16-2018 11:43:01 AM	DATE -	REVISED -

**STATE OF ILLINOIS
DEPARTMENT OF TRANSPORTATION**

SUMMARY OF QUANTITIES

SCALE: SHEET OF SHEETS STA. TO STA.

F.A. RTE.	SECTION	COUNTY	TOTAL SHEETS	SHEET NO.
567	(10,12)T-1	LEE/OGLE	67	10
		CONTRACT NO. 64H59		
ILLINOIS FED. AID PROJECT				

SCHEDULE OF QUANTITIES

20100110 TREE REMOVAL (6 TO 15 UNITS DIAMETER)

LOCATION STA 498+40 UNIT 12 37' LT

TOTAL 12

EARTH WORK SCHEDULE					
LOCATION	EARTH EXC (CUT)	EARTH EXC ADJ SHRINK 25%	EMBANK (FILL)	EARTH WORK BALANCE WASTE (+) SHORTAGE (-)	20200100 EARTH EXCAVATION
	CU YD	CU YD	CU YD	CU YD	CU YD
Lee County Box Culvert					
Temporary Pavement					
496+50 - 499+00	63	47	5		63
Lee County Box Culvert					
Down/Upstream					
Sta. 495+81/160.23=0+00					
0+00 - 1+60	272	204	2	202	272
3+22 - 4+00	116	87	0	87	116
Ogle County Box Culvert					
347+0 - 351+25	92	69	210	-141	92
*WASTE FROM LEE COUNTY SHALL BE USED FOR EMBANKMENT QUANTITY IN OGLE COUNTY					
TOTAL		407	217	190	543

21101615 TOPSOIL FURNISH AND PLACE, 4"

LOCATION STA 496+75 - 498+30 LT & RT SO YD 533
 TOTAL 533

25000210 SEEDING, CLASS 2A

LOCATION STA 347+00 - 351+00 LT & RT ACRE 0.47
 TOTAL 0.47

25000310 SEEDING, CLASS 4

LOCATION STA 347+00 - 351+00 LT & RT ACRE 0.36
 TOTAL 0.36

25000750 MOWING

LOCATION STA 347+00 - 351+00 LT & RT ACRE 0.83
 TOTAL 0.83

25100630 EROSION CONTROL BLANKET

LOCATION STA 347+00 - 351+00 LT & RT SO YD 4017
 TOTAL 4017

25200110 SODDING, SALT TOLERANT

LOCATION STA 495+50 - 498+45 LT & RT SO YD 4453
 TOTAL 4453

28000250 TEMPORARY EROSION CONTROL SEEDING

LOCATION STA 347+00 - 351+00 LT & RT POUND 300
 TOTAL 300

28000305 TEMPORARY DITCH CHECKS

LOCATION STA 347+00 35' LT & RT FOOT 24
 STA 348+00 35' LT & RT 24
 STA 350+00 35' LT & RT 24
 STA 351+00 35' LT & RT 24
 STA 495+75 140' RT 10
 STA 496+00 135' RT 10
 STA 496+50 85' RT 10
 TOTAL 126

28000400 PERIMETER EROSION BARRIER

LOCATION STA 347+50 - 350+00 RT FOOT 300 (ROW & TEMP. EASEMENT)
 STA 497+00 55' - 160' RT 310 (TEMPORARY EASEMENT)
 TOTAL 610 SEE EROSION CONTROL SHEETS

MODEL: Defaut
 FILE NAME: P:\V\089\EDD\INTEG\Illinois.gov\PROJECT\Documents\DOT_Offices\Illinois\2\Projects\03112\CADD\AutoCAD\Sheet\20112\FrSchedule.qxd

USER NAME = batesr	DESIGNED -	REVISED -
PLOT SCALE = 100.0000' / in.	DRAWN -	REVISED -
PLOT DATE = Apr-06-2018 02:55:51 PM	CHECKED -	REVISED -
	DATE -	REVISED -

**STATE OF ILLINOIS
 DEPARTMENT OF TRANSPORTATION**

SCHEDULE OF QUANTITIES

SCALE: SHEET OF SHEETS STA. TO STA.

F.A. RTE.	SECTION	COUNTY	TOTAL SHEETS	SHEET NO.
567	(10,12)7-1	LEE/OGLE	87	14
			CONTRACT NO. 64H59	
ILLINOIS FED. AID PROJECT				

4-12-18 REVISED SHEET

SCHEDULE OF QUANTITIES

52200020 TEMPORARY SOIL RETENTION SYSTEM

LOCATION	SQ. FT.	REMARKS
STA. 497+44 - 498+13	700	SEE STAGING PLANS
TOTAL	700	

70106500 TEMPORARY BRIDGE TRAFFIC SIGNALS

LOCATION	EACH	REMARKS
ESN 052-1107	1	
TOTAL	1	

70300220 TEMPORARY PAVEMENT MARKING - LINE 4"

LOCATION	FOOT	REMARKS
STA. 495+45 - 499+90	900	STAGE I & II
TOTAL	900	

70400100 TEMPORARY CONCRETE BARRIER

LOCATION	FOOT	REMARKS
STA. 496+28 - 498+25	300	SEE STAGING PLANS
TOTAL	300	

70400100 RELOCATE TEMPORARY CONCRETE BARRIER

LOCATION	FOOT	REMARKS
STA. 496+28 - 498+25	300	SEE STAGING PLANS
TOTAL	300	

70600241 IMPACT ATTENUATORS, TEMPORARY (NON-REDIRECTIVE, NARROW) TEST LEVEL 2

LOCATION	EACH	REMARKS
STA. 495+90	1	SEE STAGING PLANS
STA. 499+62	1	SEE STAGING PLANS
TOTAL	2	

70600340 IMPACT ATTENUATORS, RELOCATE (NON-REDIRECTIVE, NARROW) TEST LEVEL 2

LOCATION	EACH	REMARKS
STA. 495+90	1	SEE STAGING PLANS
STA. 499+62	1	SEE STAGING PLANS
TOTAL	2	

X0327980 PAVEMENT MARKING REMOVAL - WATER BLASTING

LOCATION	FOOT	REMARKS
STA. 495+45 - 499+90	450	STAGE I & II
TOTAL	450	

X4400110 TEMPORARY PAVEMENT REMOVAL

LOCATION	EACH	REMARKS
STA. 496+59 - 497+55 LT	42	
STA. 498+93 - 498+89 LT	54	
TOTAL	96	

MODEL: Default
FILE NAME: \\V:\LOADING\BID\BID\Illinois\road\PM\DOT\Documents\DOT_Offices\Bids\Bids\21901012\CADD\AutoCAD\Bids\Bids\21901012\scschedules.dgn

USER NAME = batesrl	DESIGNED -	REVISED -
PLOT SCALE = 100.0000 * / in.	DRAWN -	REVISED -
PLOT DATE = Apr-11-2018 08:04:01 AM	CHECKED -	REVISED -
	DATE -	REVISED -

**STATE OF ILLINOIS
DEPARTMENT OF TRANSPORTATION**

SCHEDULE OF QUANTITIES

SCALE: SHEET OF SHEETS STA. TO STA.

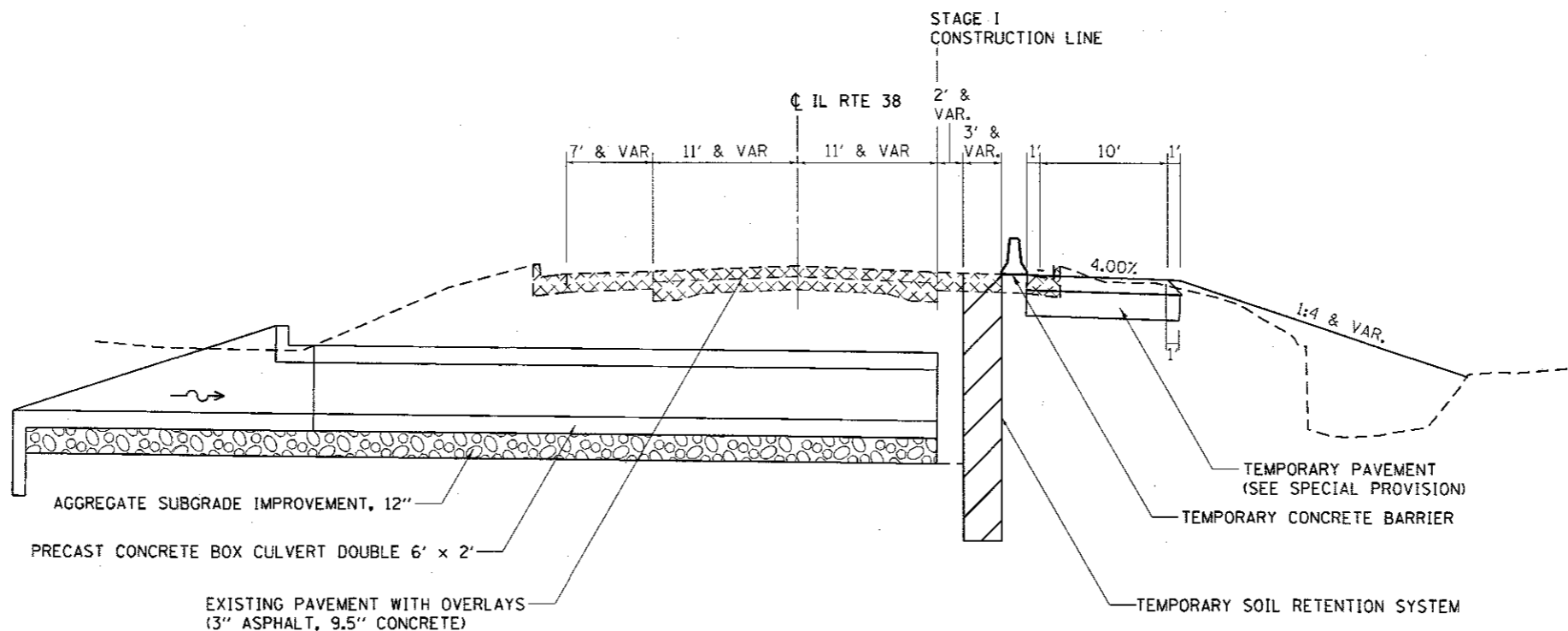
F.A. RTE.	SECTION	COUNTY	TOTAL SHEETS	SHEET NO.
567	(10.12)T-1	LEE/OGLE	67	18A
ILLINOIS FED. AID PROJECT			CONTRACT NO. 64H59	

▲ ADDED SHEET 4-12-18

STAGING TYPICAL SECTIONS

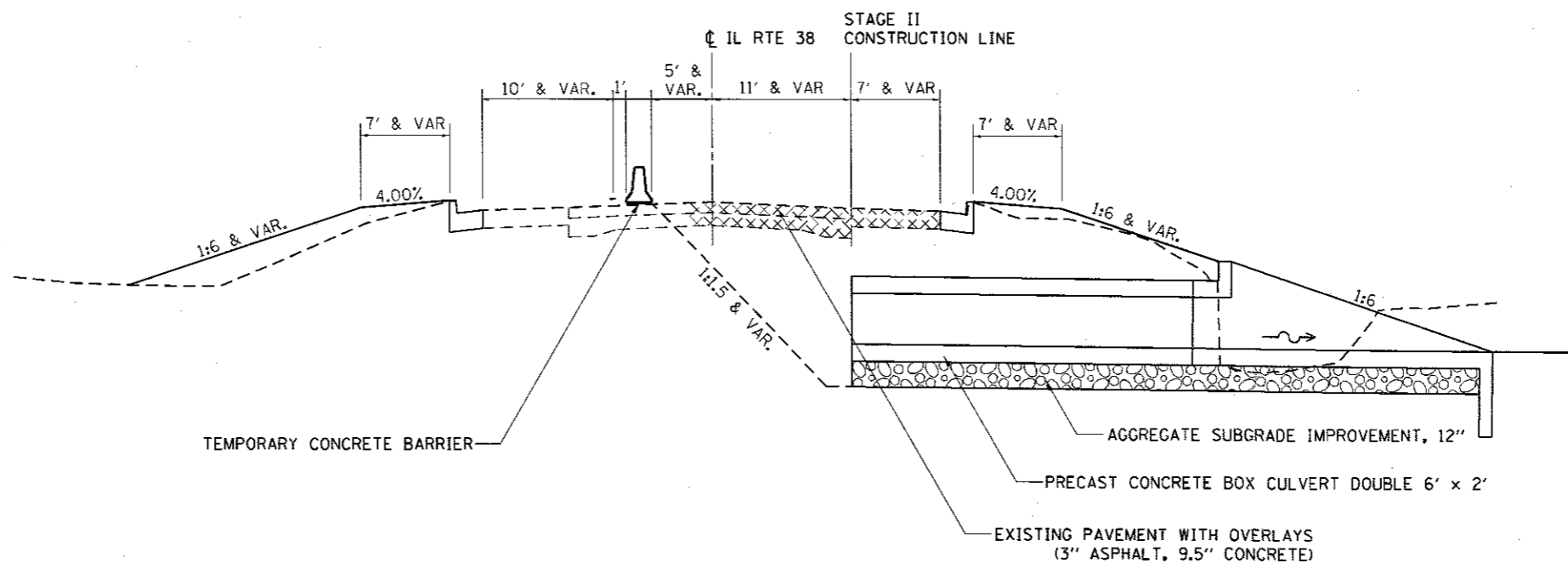
STAGE I

STA 496+59.88 - 499+90.90



STAGE II

STA 496+82.50 - 498+13.20

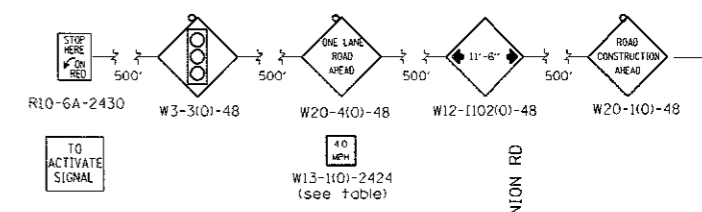
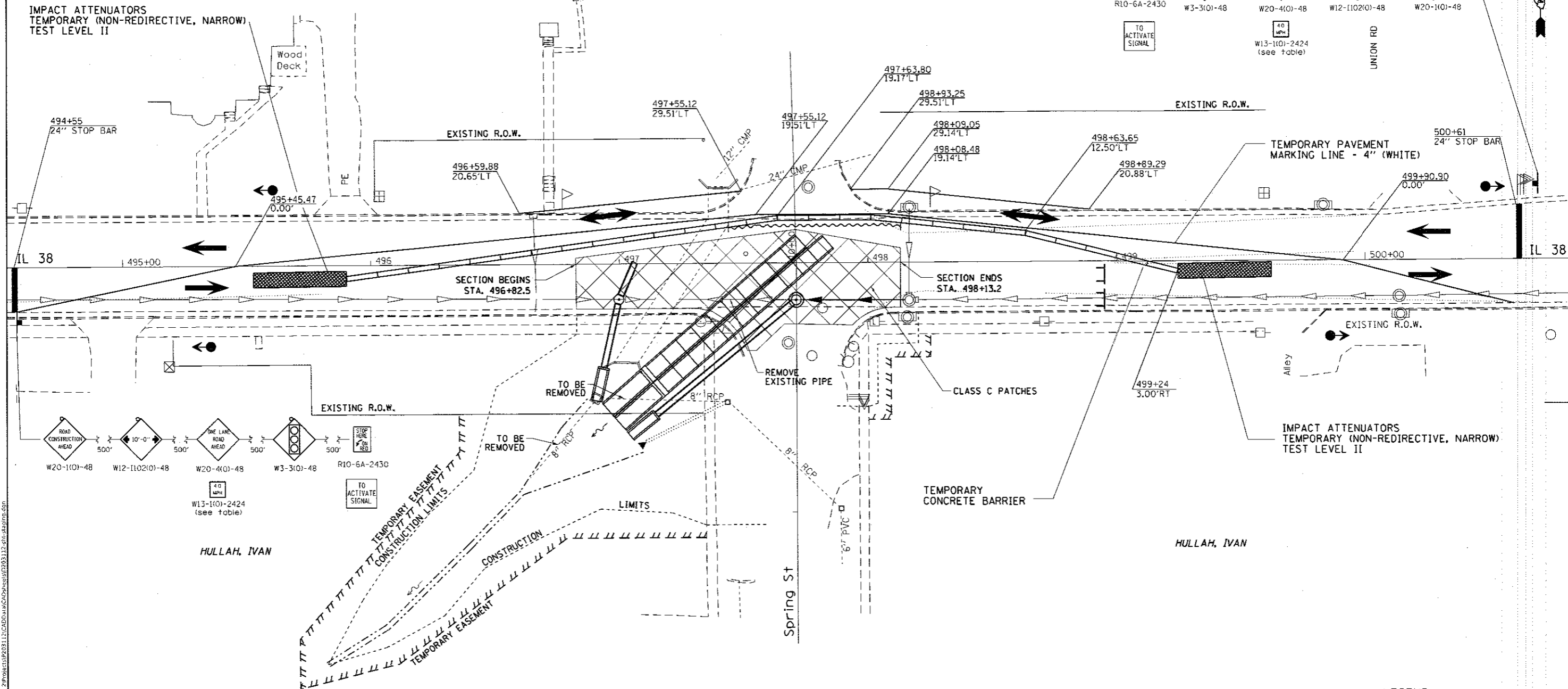


FILE NAME =	USER NAME = batesr1	DESIGNED -	REVISED -	STATE OF ILLINOIS DEPARTMENT OF TRANSPORTATION	STAGING TYPICAL SECTIONS		F.A.P. RTE.	SECTION	COUNTY	TOTAL SHEETS	SHEET NO.
pw\11.004EBID\INTEG.illinois.gov\PI\DOT\Documents\DOT Offices\District 2\Projects\P2018\496+82.50-498+13.20\112\stg-typical.dwg	DRG DATE = 04/06/2018 02:33:02 PM	CHECKED -	REVISED -				567	(10,12) T-1	LEE/OGLE	69	34A
Default	PLOT SCALE = 1/8" = 1' / in.	DATE -	REVISED -				CONTRACT NO. 64H59				
	PLOT DATE = Apr-06-2018 02:33:02 PM						ILLINOIS FED. AID PROJECT				

ADDED SHEET 4-12-18

STAGE 1

STA. 494 + 55 - 500 + 61



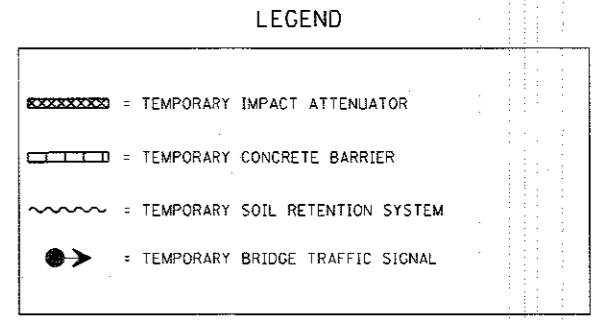
IMPACT ATTENUATORS
TEMPORARY (NON-REDIRECTIVE, NARROW)
TEST LEVEL II

TEMPORARY PAVEMENT
MARKING LINE - 4" (WHITE)

IMPACT ATTENUATORS
TEMPORARY (NON-REDIRECTIVE, NARROW)
TEST LEVEL II

STAGE 1 NOTES

- USE STANDARD 701321. - SEE STD FOR ADDITIONAL INFORMATION NOT SHOWN



USER NAME = fasslermj	DESIGNED -	REVISED -
	DRAWN -	REVISED -
PLOT SCALE = 40,000' / in.	CHECKED -	REVISED -
PLOT DATE = Apr-10-2018 01:39:55 PM	DATE -	REVISED -

**STATE OF ILLINOIS
DEPARTMENT OF TRANSPORTATION**

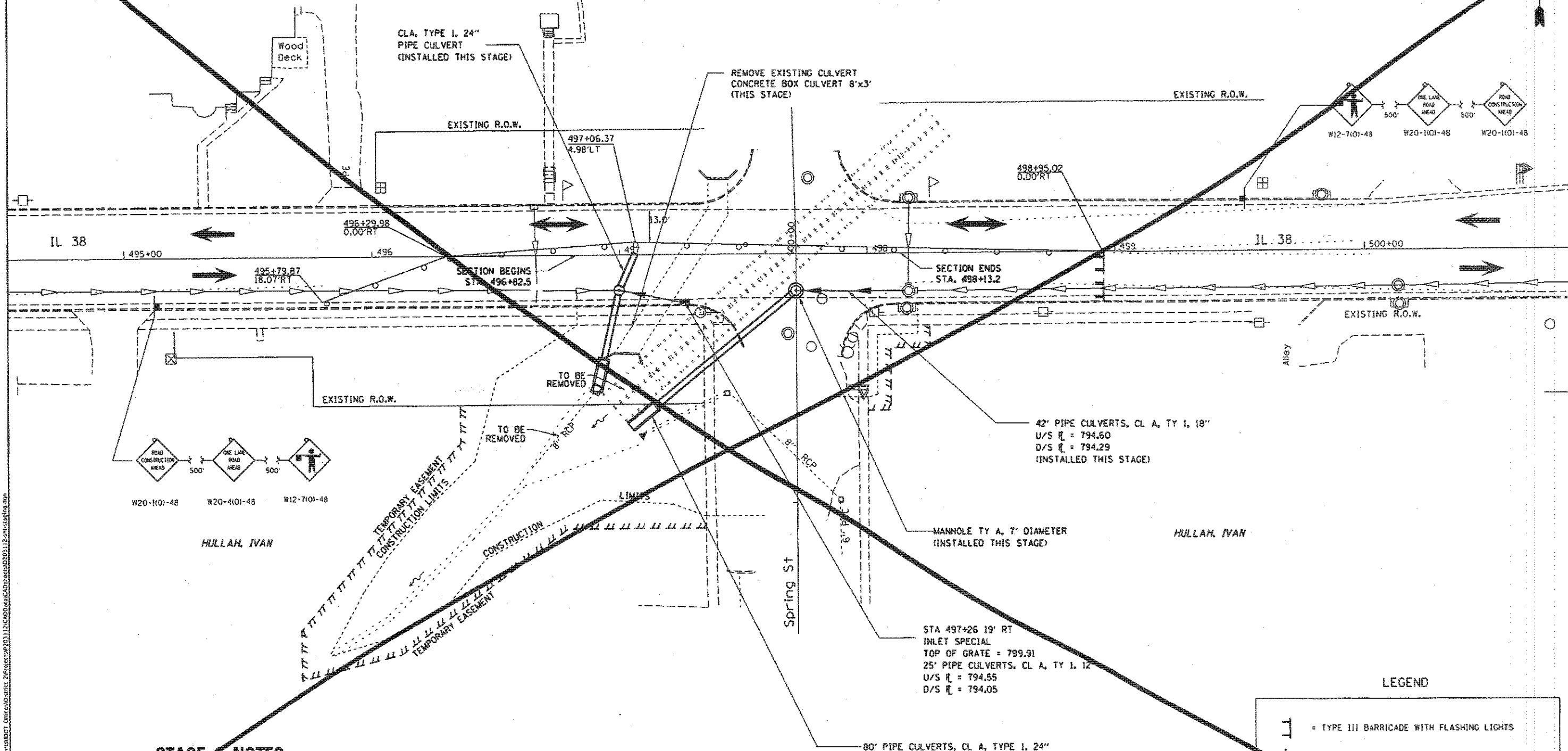
IL 38 STAGING PLAN		F.A.P. RTE.	SECTION	COUNTY	TOTAL SHEETS	SHEET NO.
SN 052-1125 STAGE 1		567	(10,12) T-1	LEE/OGLE	67	35
SCALE: SHEET OF SHEETS STA. TO STA.		ILLINOIS FED. AID PROJECT		CONTRACT NO. 64H59		

REVISSED SHEETS 4-18-18

STAGE 3

STA. 495 + 00 - 499 + 00

(DAYTIME ONLY, ONE HALF AT A TIME)



STAGE 3 NOTES

1. USE STANDARD 701501. - SEE STD FOR ADDITIONAL INFORMATION NOT SHOWN
2. REMOVE EXISTING CULVERT RT.
3. INSTALL 24", 18" PIPE CULVERT, 7' MANHOLE, 4' MANHOLE AND 12" S.S. RT, THE PORTIONS WITHIN THE TRAVELED WAY SHALL BE DONE DURING THE STAGE.
4. AT THE COMPLETION OF EVERY DAY'S WORK, DRIVING LANES SHALL BE A HARD SURFACE. AGGREGATE SHALL NOT BE ALLOWED. COLD PATCH IS AN ALTERNATIVE. SURFACE SHALL BE MAINTAINED UNTIL PERMANENT FINAL SURFACE IS INSTALLED.

	= TYPE III BARRICADE WITH FLASHING LIGHTS
	= SIGN
	= BARRICADE, OR DRUM WITH STEADY BURNING LIGHTS
	= SIGN WITH FLASHING LIGHT

USER NAME = <i>Clark</i>	DESIGNED -	REVISED -
PLOT SCALE = 40,000' / 1" =	DRAWN -	REVISED -
PLOT DATE = 1/24/2018	CHECKED -	REVISED -
	DATE -	REVISED -

**STATE OF ILLINOIS
DEPARTMENT OF TRANSPORTATION**

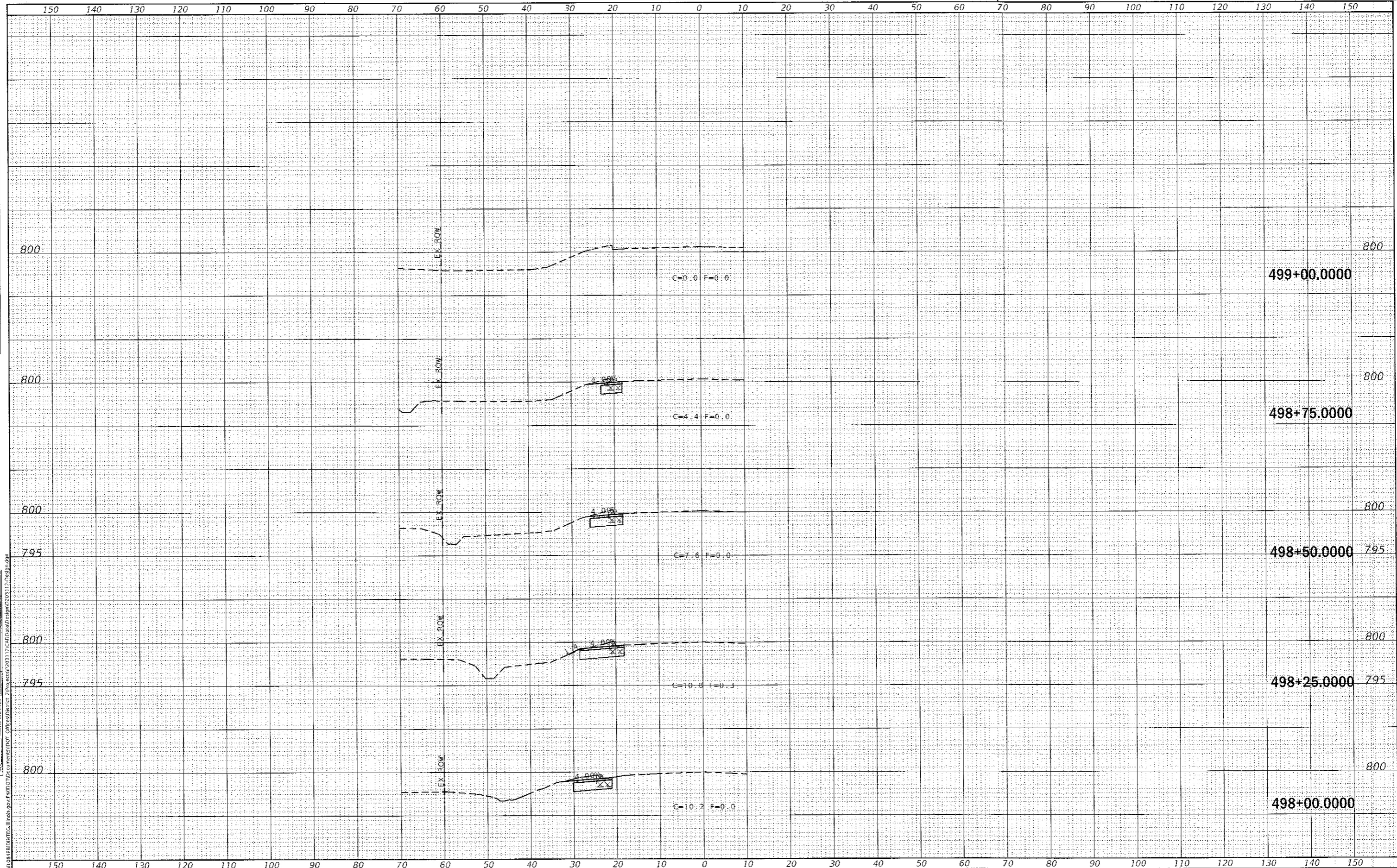
IL 38 STAGING PLAN		F.A.P. RTE.	SECTION	COUNTY	TOTAL SHEETS	SHEET NO.
SN 052-1125 STAGE 3		567	(10,12) F-1	LEEJOGLE	64	37
				CONTRACT NO. 64H59		
SCALE:	SHEET	OF	SHEETS	STA.	TO	STA.

~~DELETED SHEET~~ 4-12-18

MODEL: D:\out\... FILE: NAME: ...

FINAL SURVEY	DATE
SURVEYED	BY
PLOTTED	
NOTE BOOK	
AREAS	
AREAS CHECKED	

ORIGINAL SURVEY	DATE
SURVEYED	BY
PLOTTED	
NOTE BOOK	
AREAS	
AREAS CHECKED	



MODEL: D:\DWG
 FILE NAME: P:\V\084\PRINTING\ILLINOIS\DOT\Documents\DOT\Projects\2013\CAD\000\001\Drawings\0117.Dwg

USER NAME = batesrl	DESIGNED -	REVISED -
	DRAWN -	REVISED -
PLOT SCALE = 20.0000' / in.	CHECKED -	REVISED -
PLOT DATE = Apr-06-2018 01:45:08 PM	DATE -	REVISED -

**STATE OF ILLINOIS
 DEPARTMENT OF TRANSPORTATION**

**CROSS SECTIONS FOR
 TEMPORARY PAVEMENT**

SCALE: SHEET OF SHEETS STA. 498+00.000 TO STA. 499+00.000

F.A.P. RTE.	SECTION	COUNTY	TOTAL SHEETS	SHEET NO.
567	(10,12)-1	LEE/OGLE	69	69
CONTRACT NO. 64H59			ILLINOIS FED. AID PROJECT	

ADDED SHEET 4-12-18