

STATE OF ILLINOIS
DEPARTMENT OF TRANSPORTATION

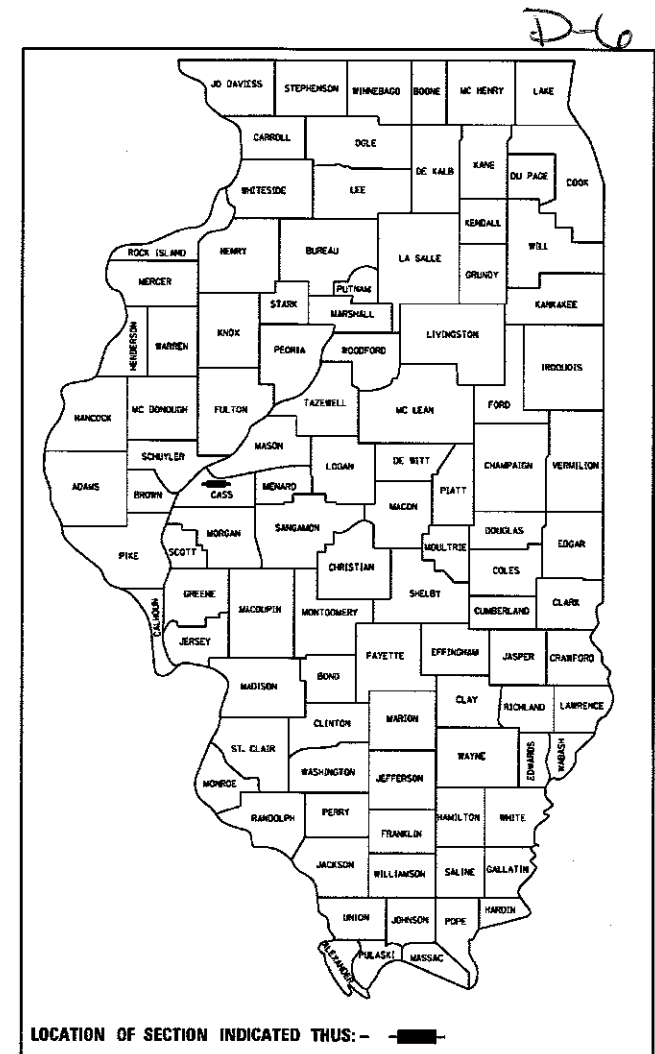
F.A. RTE.	SECTION	COUNTY	TOTAL SHEETS	SHEET NO.
	PARK ROADS JEPC 2018	CASS	26	1
		ILLINOIS	CONTRACT NO. 46901	

FOR INDEX OF SHEETS, SEE SHEET NO. 02

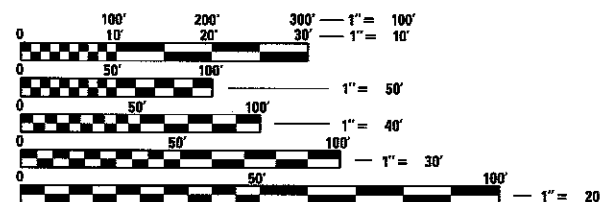
PROPOSED HIGHWAY PLANS

JIM EDGAR PANTHER CREEK
FISH AND WILDLIFE AREA
SECTION PARK ROADS JEPC 2018
PROJECT
OIL AND CHIP
CASS COUNTY

C-30-016-18

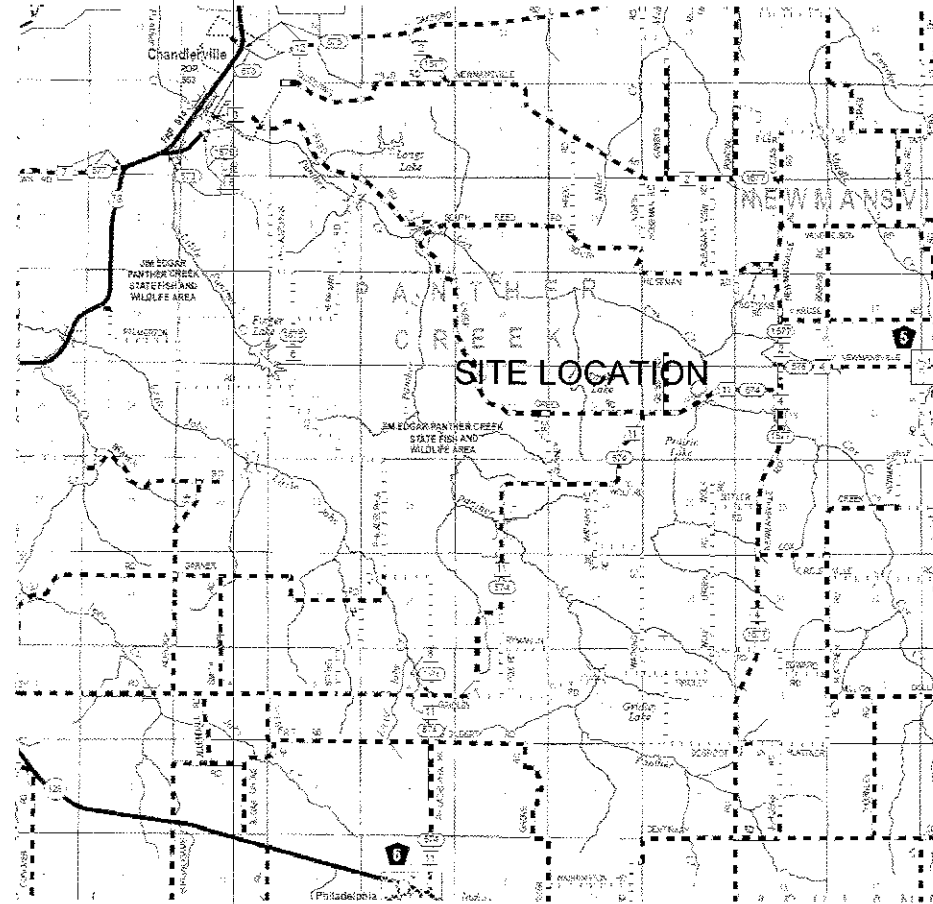


IDNR FILE # 4-17-038



FULL SIZE PLANS HAVE BEEN PREPARED USING STANDARD ENGINEERING SCALES. REDUCED SIZED PLANS WILL NOT CONFORM TO STANDARD SCALES. IN MAKING MEASUREMENTS ON REDUCED PLANS, THE ABOVE SCALES MAY BE USED.

J.U.L.I.E.
JOINT UTILITY LOCATION INFORMATION FOR EXCAVATION
1-800-892-0123
OR 811



PROJECT ENGINEER VINCE MADONIA 217 /782-4074

GROSS AND NET LENGTH = APPROX. 9.8 MILES INTERNAL PARK ROADS

CONTRACT NO. 46901

STATE OF ILLINOIS
DEPARTMENT OF TRANSPORTATION

SUBMITTED *March 8 2018* *[Signature]*
REGIONAL ENGINEER

Mar 23 2018 *[Signature]*
ENGINEER OF DESIGN AND ENVIRONMENT

Mar 23 2018 *[Signature]*
DIRECTOR OF OFFICE OF HIGHWAYS PROJECT IMPLEMENTATION

PRINTED BY THE AUTHORITY
OF THE STATE OF ILLINOIS

GENERAL NOTES:

1. ANY REFERENCE TO A STANDARD IN THESE PLANS SHALL BE INTERPRETED TO MEAN THE EDITION AS INDICATED BY THE SUB NUMBER LISTED IN THE INDEX OF SHEETS OR THE COPY OF THE STANDARD INCLUDED IN THESE PLANS.
2. IN ADDITION TO FIELD SURVEYS, PLAN DIMENSIONS AND DETAILS RELATIVE TO THE EXISTING FACILITIES HAVE BEEN TAKEN FROM EXISTING PLANS AND ARE SUBJECT TO CONSTRUCTION VARIATIONS. IT SHALL BE THE CONTRACTOR'S RESPONSIBILITY TO VERIFY SUCH DIMENSIONS AND DETAILS IN THE FIELD. SUCH VARIATIONS SHALL NOT BE A CAUSE FOR ADDITIONAL COMPENSATION DUE TO A CHANGE IN THE SCOPE OF WORK; HOWEVER, THE CONTRACTOR WILL BE PAID FOR THE QUANTITY ACTUALLY FURNISHED AT THE UNIT PRICE BID FOR THE WORK.
3. THE CONTRACTOR SHALL BE RESPONSIBLE FOR PROTECTING UTILITY PROPERTY FROM CONSTRUCTION OPERATIONS, AS OUTLINED IN ARTICLE 107.31 OF THE STANDARD SPECIFICATIONS. THE J.U.L.I.E. NUMBER IS 1-800-892-0123. A MINIMUM OF 48 HOURS ADVANCE NOTICE IS REQUIRED.
4. COVER AND SEAL COAT AGGREGATE SHALL BE CRUSHED LIMESTONE

HIGHWAY STANDARDS

000001-06
 442201-03
 701901-07
 BLR 18-6
 BLR 17-4
 BLR 21-9
 BLR 22-7

INDEX OF SHEETS

1 COVER SHEET
 2 STANDARDS AND GENERAL NOTES
 3 SUMMARY OF QUANTITIES
 4-6 SCHEDULES
 7-26 PLAN VIEW

FILE NAME :	USER NAME : *USER*	DESIGNED -	REVISED -	STATE OF ILLINOIS DEPARTMENT OF TRANSPORTATION	STANDARDS AND GENERAL NOTES		F.A. RTE.	SECTION	COUNTY	TOTAL SHEETS	SHEET NO.
FILEL		DRAWN -	REVISED -					PARK ROADS JEPC 2018	CASS	26	2
MODELNAME		CHECKED -	REVISED -		SCALE:	SHEET 1 OF 1 SHEETS	STA.	TO STA.	CONTRACT NO. 46901		
		DATE -	REVISED -		ILLINOIS FED. AID PROJECT						

0005

PARK ROADS
100% STATE
ROADWAY

CODE NO.	ITEM	UNIT	TOTAL QUANTITY	0001 RURAL
28100809	STONE DUMPED RIPRAP, CLASS A5	TON	182	182
35800100	PREPARATION OF BASE	SQ YD	59,010	59,010
40200100	AGGREGATE SURFACE COURSE, TYPE A	TON	7,510	7,510
40300200	BITUMINOUS MATERIALS (PRIME COAT)	TON	13.0	13.0
40300400	BITUMINOUS MATERIALS (COVER AND SEAL COATS)	TON	558.0	558.0
40300500	COVER COAT AGGREGATE	TON	2,790	2,790
40300600	SEAL COAT AGGREGATE	TON	2,290	2,290
40600400	MIXTURE FOR CRACKS, JOINTS, AND FLANGEWAYS	TON	10	10
44200061	PAVEMENT PATCHING, TYPE I, 6 INCH	SQ YD	15	15
45100100	CRACK ROUTING (PAVEMENT)	FOOT	4500	4500
45100200	CRACK FILLING	POUND	1000	1000
67100100	MOBILIZATION	LSUM	1	1
X0300019	REMOVE AND REINSTALL PARKING BLOCKS	EACH	223	223
X0325800	PARKING LOT SEAL COAT	SQ YD	4010	4010

Application Rates:	Prime Coat	0.40	gal/SY	Prime Density	8.5	lb/gal
	Bit Cove	0.35	gal/SY	Cov. Coat Density	8.5	lb/gal
	Agg Cov	25	lb/SY	Bit Seal Coat Den.	8.5	lb/gal
	Bit Cove	0.30	gal/SY	Agg Base Repair	2.05	Tons/CUYD
	Agg Cov	25	lb/SY			
	Bit Seal Coat	0.30	gal/SY			
	Bit Seal Coat Agg	25	lb/SY			

Location	Length (Feet)	Width (Feet)	Area (SQFT)	Area (SQYD)	Existing Surface	Treatment	Prime Coat (Tons)	Bit Cover Coat 1 (Tons)	Agg Cover Coat 1 (Tons)	Bit Cover Coat 2 (Tons)	Agg Cover Coat 2 (Tons)	Bit Seal Coat (Tons)	Bit Seal Coat Agg (Tons)	Prep Of Base (SQYD)	Agg Surf Cse T-A (Tons)	Mixture for CJ&F (Tons)
Site Roads																
C-1 Road	992.0	17.0	16,864.0	1,873.78	O&C	A-2	-	2.79	23.42	-	-	2.39	23.42	-	-	-
C-8 Road	1,745.0	10.0	17,450.0	1,938.89	AGG	2"Agg	-	-	-	-	-	-	-	1,938.89	220.82	0.5
Bike Path - East	10,200.0	10.0	102,000.0	11,333.33	O&C	A-2	-	16.86	141.67	-	-	14.45	141.67	-	-	-
Bike Path - West	6,180.0	10.0	61,800.0	6,866.67	O&C	A-2	-	10.21	85.83	-	-	8.76	85.83	-	-	-
Bottoms Road	3,700.0	10.0	37,000.0	4,111.11	AGG	3" Agg	-	-	-	-	-	-	-	4,111.11	702.31	-
Drake Lake D7-BA Rd	3,670.0	19.0	69,730.0	7,747.78	O&C	A-2	-	11.52	96.85	-	-	9.88	96.85	-	-	0.5
Geiss Rd	3,360.0	19.0	63,840.0	7,093.33	O&C	A-2	-	10.55	88.67	-	-	9.04	88.67	-	-	-
Wolf Rd	9,755.0	12.0	117,060.0	13,006.67	AGG	2"Agg	-	2.23	18.75	-	-	1.91	18.75	13,006.67	1,481.31	-
Group Campground Rd	2,920.0	20.0	58,400.0	6,488.89	O&C	A-3	-	9.65	81.11	-	-	8.27	81.11	-	-	0.5
Gurney Pond Rd	659.0	18.0	11,862.0	1,318.00	O&C	A-2	-	1.96	16.48	-	-	1.68	16.48	-	-	-
Gurney Rd	4,521.0	12.0	54,252.0	6,028.00	AGG	2"Agg	-	-	-	-	-	-	-	6,028.00	686.52	-
Herrmann Pond Rd	185.0	10.0	1,850.0	205.56	AGG	2" Agg+A-3	0.35	0.31	2.57	0.26	2.57	0.26	2.57	205.56	23.41	-
Mtn Bike Trailhead Rd	1,925.0	21.0	40,425.0	4,491.67	O&C	A-2	-	6.68	56.15	-	-	5.73	56.15	-	-	-
O-11 Rd	777.0	17.0	13,209.0	1,467.67	O&C	A-2	-	2.18	18.35	-	-	1.87	18.35	-	-	-
Prairie Lake Campground	2,130.0	21.0	44,730.0	4,970.00	O&C	A-3	-	7.39	62.13	6.34	62.13	6.34	62.13	-	-	4.0
Prairie Lake Campground	5,120.0	14.0	71,680.0	7,964.44	O&C	A-3	-	11.85	99.56	10.15	99.56	10.15	99.56	-	-	4.0
Prairie Lk Boat Ramp Rd	820.0	22.0	18,040.0	2,004.44	O&C	A-2	-	2.98	25.06	-	-	2.56	25.06	-	-	0.5
Primitive Camping Rd	1,380.0	12.0	16,560.0	1,840.00	O&C	A-3	-	2.74	23.00	2.35	23.00	2.35	23.00	-	-	-
Q-13 Rd	663.0	12.0	7,956.0	884.00	O&C	A-2	-	1.31	11.05	-	-	1.13	11.05	-	-	-
Q-14 Rd	1,275.0	10.0	12,750.0	1,416.67	AGG	3" Agg	-	-	-	-	-	-	-	1,416.67	242.01	-
Q-15 Rd	726.0	10.0	7,260.0	806.67	AGG	4" Agg	-	-	-	-	-	-	-	806.67	165.81	-
Q-3 Rd	750.0	10.0	7,500.0	833.33	AGG	3"Agg	-	-	-	-	-	-	-	833.33	142.36	-
Questing Hills Campground	1,230.0	20.0	24,600.0	2,733.33	O&C	A-3	-	4.07	34.17	3.49	34.17	3.49	34.17	-	-	-
Questing Hills Campground	2,871.0	14.0	40,194.0	4,466.00	O&C	A-3	-	6.64	55.83	5.69	55.83	5.69	55.83	-	-	-
Site Office Entrance	573.0	18.0	10,314.0	1,146.00	O&C	A-3	-	1.70	14.33	1.46	14.33	1.46	14.33	-	-	-
Sittler Rd	2,632.0	12.0	31,584.0	3,509.33	AGG	2"Agg	-	-	-	-	-	-	-	3,509.33	399.67	-
Old Gridley Rd. (Edwards Lane)	775.0	12.0	9,300.0	1,033.33	O&C	A-2	-	1.54	12.92	-	-	1.32	12.92	-	-	-
Controlled Unit																
C-1	-	-	5,029.9	558.88	O&C	A-2	-	0.83	6.99	-	-	0.71	6.99	-	-	-
C-2	-	-	5,966.4	662.93	O&C	A-2	-	0.99	8.29	-	-	0.85	8.29	-	-	-
C-3	-	-	7,209.0	801.00	O&C	A-2	-	1.19	10.01	-	-	1.02	10.01	-	-	-
C-3A	-	-	7,836.6	870.73	O&C	A-2	-	1.30	10.88	-	-	1.11	10.88	-	-	-
C-3B	-	-	11,467.6	1,274.18	O&C	A-2	-	1.90	15.93	-	-	1.62	15.93	-	-	-
C-3C	-	-	15,731.0	1,747.89	O&C	A-2	-	2.60	21.85	-	-	2.23	21.85	-	-	-
C-3D	-	-	3,002.1	333.57	O&C	A-2	-	0.50	4.17	-	-	0.43	4.17	-	-	-

Location	Length (Feet)	Width (Feet)	Area (SQFT)	Area (SQYD)	Existing Surface	Treatment	Prime Coat (Tons)	Bit Cover Coat 1 (Tons)	Agg Cover Coat 1 (Tons)	Bit Cover Coat 2 (Tons)	Agg Cover Coat 2 (Tons)	Bit Seal Coat (Tons)	Bit Seal Coat Agg (Tons)	Prep Of Base (SQYD)	Agg Surf Cse T-A (Tons)	Mixture for CJ&F (Tons)
Controlled Unit																
C-4	-	-	2,018.0	224.22	AGG	2" Agg	-	-	-	-	-	-	-	224.22	25.54	-
C-5	-	-	5,931.6	659.07	O&C	A-2	-	0.98	8.24	-	-	0.84	8.24	-	-	-
C-6	-	-	7,511.2	834.58	O&C	A-2	-	1.24	10.43	-	-	1.06	10.43	-	-	-
C-7	-	-	5,945.0	660.56	O&C	A-2	-	0.98	8.26	-	-	0.84	8.26	-	-	-
C-8	-	-	4,528.0	503.11	AGG	3" Agg	-	-	-	-	-	-	-	503.11	85.95	-
C-9	-	-	14,668.5	1,629.83	O&C	A-2	-	2.42	20.37	-	-	-	-	-	-	-
C-10 & Canoe Ramp	-	-	26,328.6	2,925.40	1/2 O&C	Agg + A-3	2.49	4.35	36.57	3.73	36.57	3.73	36.57	1,462.70	80.00	-
C-11	-	-	7,266.5	807.39	AGG	2" Agg	-	-	-	-	-	-	-	807.39	91.95	-
C-12	-	-	9,780.3	1,086.70	O&C	A-2	-	1.62	13.58	-	-	1.39	13.58	-	-	-
C-13	-	-	5,512.2	612.47	O&C	A-2	-	0.91	7.66	-	-	0.78	7.66	-	-	-
C-14	-	-	7,750.1	861.12	O&C	A-2	-	1.28	10.76	-	-	1.10	10.76	-	-	-
C-15	-	-	6,312.4	701.38	O&C	A-2	-	1.04	8.77	-	-	0.89	8.77	-	-	-
C-16	-	-	78,115.1	8,679.46	O&C	A-2	-	12.91	108.49	-	-	11.07	108.49	-	-	-
C-17	-	-	5,420.1	602.23	O&C	A-2	-	0.90	7.53	-	-	0.77	7.53	-	-	-
C-18	-	-	5,988.0	665.33	O&C	A-2	-	0.99	8.32	-	-	0.85	8.32	-	-	-
C-19	-	-	2,796.4	310.71	AGG	3" Agg	-	-	-	-	-	-	-	310.71	53.08	-
C-20	-	-	9,676.4	1,075.16	O&C	A-2	-	1.60	13.44	-	-	1.37	13.44	-	-	-
C-21	-	-	6,027.5	669.72	O&C	A-2	-	1.00	8.37	-	-	0.85	8.37	-	-	-
C-21A	-	-	900.0	100.00	AGG	3" Agg	-	-	-	-	-	-	-	100.00	17.08	-
C-22	-	-	9,861.9	1,095.77	O&C	A-2	-	1.63	13.70	-	-	1.40	13.70	-	-	-
C-23	-	-	8,560.0	951.11	AGG	3" Agg	-	-	-	-	-	-	-	951.11	162.48	-
Day use areas including Campsite pads																
D-1 Dove Field 1	-	-	7,405.5	822.83	O&C	A-2	-	1.22	10.29	-	-	1.05	10.29	-	-	-
D-2 Dove Field 2	-	-	9,522.1	1,058.01	AGG	3" Agg	-	-	-	-	-	-	-	1,058.01	180.74	-
D-2OCS Site Office Parking Lot	-	-	28,235.2	3,137.24	O&C	A-2	-	4.67	39.22	-	-	4.00	39.22	-	-	-
D-2OCSA Site Office overflow parki	-	-	32,415.0	3,601.67	AGG	A-3	3.06	5.36	45.02	4.59	45.02	4.59	45.02	3,601.67	-	-
D-3 Dove Field 3	-	-	9,273.4	1,030.38	O&C	A-2	-	1.53	12.88	-	-	1.31	12.88	-	-	-
D-3A Parking Area off Drake LK R	-	-	5,960.0	662.22	O&C	A-2	-	0.99	8.28	-	-	0.84	8.28	-	-	-
D-3BA Praire Lake Boat Access Lo	-	-	86,024.9	9,558.32	O&C	A-2	-	14.22	119.48	-	-	12.19	119.48	-	-	-
D-4 Dove Field 4	-	-	9,282.0	1,031.33	AGG	3" Agg	-	-	-	-	-	-	-	1,031.33	176.19	-
D-5 Dove Field 5	-	-	10,800.1	1,200.01	AGG	3" Agg	-	-	-	-	-	-	-	1,200.01	205.00	-
D-5BA Gridley Lake Boat Access Lo	-	-	31,595.2	3,510.58	O&C	A-2	-	5.22	43.88	-	-	4.48	43.88	-	-	-
D-6 Dove Field 6	-	-	9,522.4	1,058.04	AGG	2" Agg	-	-	-	-	-	-	-	1,058.04	120.50	-
D-6O Scenic Overlook Rd & Parkin	-	-	54,000.0	6,000.00	O&C	A-2	-	8.93	75.00	-	-	7.65	75.00	-	-	-
D-7BA Drake Lake Boat Access Lo	-	-	34,617.2	3,846.36	O&C	A-2	-	5.72	48.08	-	-	4.90	48.08	-	-	-
D-8 Questing Hills Parking & Misc	-	-	37,440.0	4,160.00	O&C	A-2	-	6.19	52.00	-	-	5.30	52.00	-	-	-
D-11FA Herman Rd Pond	-	-	5,029.9	558.88	AGG	3" Agg+A-3	0.48	0.83	6.99	0.71	6.99	0.71	6.99	558.88	95.47	-
D-12 FA Gurney Pond Rd	-	-	8,324.9	924.99	O&C	A-2	-	1.38	11.56	-	-	1.18	11.56	-	-	-
D-13 Questing Hills Campsite Pad	-	-	53,474.8	5,941.64	AGG	3" Agg+A-3	5.05	8.84	74.27	7.58	74.27	7.58	74.27	5,941.64	1,015.03	-
D-14 Praire Lake Campsite Pads	-	-	87,885.4	9,765.04	O&C	A-2	-	14.53	122.06	-	-	12.45	122.06	-	-	-
D-16 Dove Field 16	-	-	21,105.2	2,345.02	O&C	A-2	-	3.49	29.31	-	-	2.99	29.31	-	-	-
D-17 Wolf Rd Parking	-	-	10,499.0	1,166.56	AGG	A-3	0.99	1.74	14.58	1.49	14.58	1.49	14.58	1,166.56	-	-
D-18 Newmansville Rd Parking	-	-	5,161.0	573.44	AGG	A-3	0.49	0.85	7.17	0.73	7.17	0.73	7.17	573.44	-	-

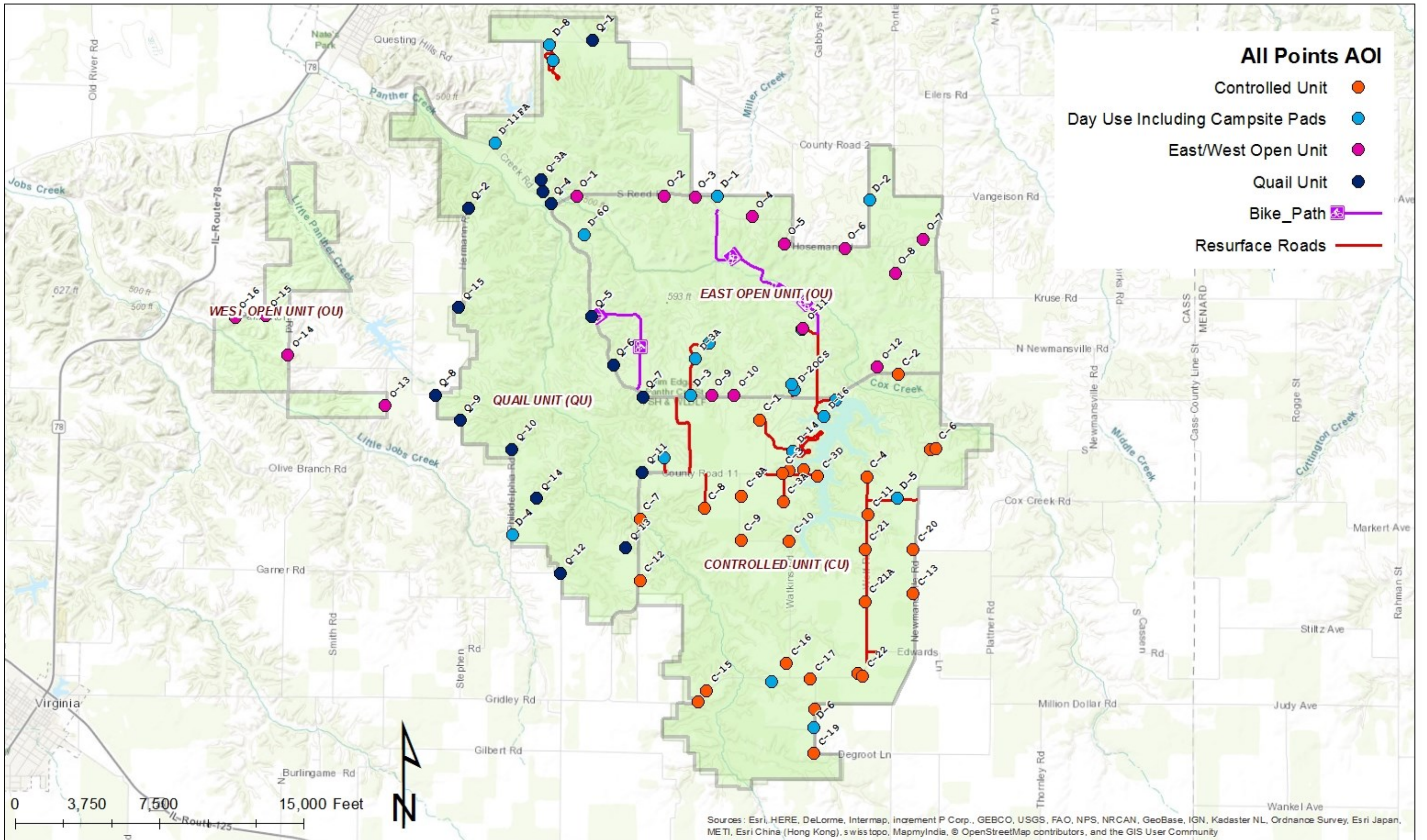
Location	Length (Feet)	Width (Feet)	Area (SQFT)	Area (SQYD)	Existing Surface	Treatment	Prime Coat (Tons)	Bit Cover Coat 1 (Tons)	Agg Cover Coat 1 (Tons)	Bit Cover Coat 2 (Tons)	Agg Cover Coat 2 (Tons)	Bit Seal Coat (Tons)	Bit Seal Coat Agg (Tons)	Prep Of Base (SQYD)	Agg Surf Cse T-A (Tons)	Mixture for CJ&F (Tons)
Quality Unit																
Q-1	-	-	3,756.1	417.34	Dirt	3" Agg	-	-	-	-	-	-	-	417.34	71.30	-
Q-2	-	-	1,013.9	112.66	Dirt	3" Agg	-	-	-	-	-	-	-	112.66	19.25	-
Q-3	-	-	1,864.2	207.13	AGG	3" Agg	-	-	-	-	-	-	-	207.13	35.39	-
Q-4 Equestrian Trail Head	-	-	62,505.0	6,945.00	O&C	A-2	-	10.33	86.81	-	-	8.85	86.81	-	-	-
Q-5	-	-	7,462.6	829.18	O&C	A-2	-	1.23	10.36	-	-	1.06	10.36	-	-	-
Q-6	-	-	5,824.5	647.17	O&C	A-2	-	0.96	8.09	-	-	0.83	8.09	-	-	-
Q-7	-	-	6,445.8	716.20	O&C	A-2	-	1.07	8.95	-	-	0.91	8.95	-	-	-
Q-8	-	-	2,729.6	303.29	AGG	3" Agg	-	-	-	-	-	-	-	303.29	51.81	-
Q-9	-	-	2,405.4	267.27	AGG	3" Agg	-	-	-	-	-	-	-	267.27	45.66	-
Q-10	-	-	4,048.8	449.87	AGG	3" Agg	-	-	-	-	-	-	-	449.87	76.85	-
Q-11	-	-	6,584.8	731.64	O&C	A-2	-	1.09	9.15	-	-	0.93	9.15	-	-	-
Q-12	-	-	4,449.9	494.43	AGG	3" Agg	-	-	-	-	-	-	-	494.43	84.47	-
Q-13	-	-	6,476.3	719.59	O&C	A-2	-	1.07	8.99	-	-	0.92	8.99	-	-	-
Q-14	-	-	6,031.9	670.21	AGG	3" Agg	-	-	-	-	-	-	-	670.21	114.49	-
Q-15	-	-	1,418.0	157.56	AGG	3" Agg	-	-	-	-	-	-	-	157.56	26.92	-
East/West Open Unit																
O-1	-	-	8,722.6	969.18	O&C	A-2	-	1.44	12.11	-	-	1.24	12.11	-	-	-
O-2	-	-	11,074.0	1,230.44	O&C	A-2	-	1.83	15.38	-	-	1.57	15.38	-	-	-
O-3	-	-	5,696.6	632.96	O&C	A-2	-	0.94	7.91	-	-	0.81	7.91	-	-	-
O-4	-	-	11,750.4	1,305.60	O&C	A-2	-	1.94	16.32	-	-	1.66	16.32	-	-	-
O-5	-	-	7,788.6	865.40	O&C	A-2	-	1.29	10.82	-	-	1.10	10.82	-	-	-
O-6	-	-	6,528.5	725.39	O&C	A-2	-	1.08	9.07	-	-	0.92	9.07	-	-	-
O-7	-	-	8,029.9	892.21	O&C	A-2	-	1.33	11.15	-	-	1.14	11.15	-	-	-
O-8	-	-	11,470.7	1,274.52	AGG	3" Agg	-	-	-	-	-	-	-	1,274.52	217.73	-
O-9	-	-	6,857.2	761.91	O&C	A-2	-	1.13	9.52	-	-	0.97	9.52	-	-	-
O-10	-	-	6,989.1	776.57	O&C	A-2	-	1.16	9.71	-	-	0.99	9.71	-	-	-
O-11/D-9	-	-	18,680.0	2,075.56	O&C	A-2	-	3.09	25.94	-	-	2.65	25.94	-	-	-
O-12 See Schedule Below	-	-	36,065.0	4,007.22	Bit	Seal Coat	-	-	-	-	-	-	-	-	-	-
O-13	-	-	6,677.1	741.90	AGG	3" Agg	-	-	-	-	-	-	-	741.90	126.74	-
O-14	-	-	4,001.0	444.56	AGG	3" Agg	-	-	-	-	-	-	-	444.56	75.94	-
O-15	-	-	3,883.0	431.44	AGG	3" Agg	-	-	-	-	-	-	-	431.44	73.71	-
O-16	-	-	5,681.8	631.31	AGG	3" Agg	-	-	-	-	-	-	-	631.31	107.85	-
Totals			232,870.66				12.90	274.99	2,310.82	48.57	476.16	233.63	2,290.44	59,008.54	7,501.36	10.00

Location	Area (SQYD)	Crack Filling (Pound)	Pavement Patching TY I (SQYD)	Parking Lot Seal Coat (SQYD)
Lot O-12	4,007.0	1,000.0	15	4,007.0

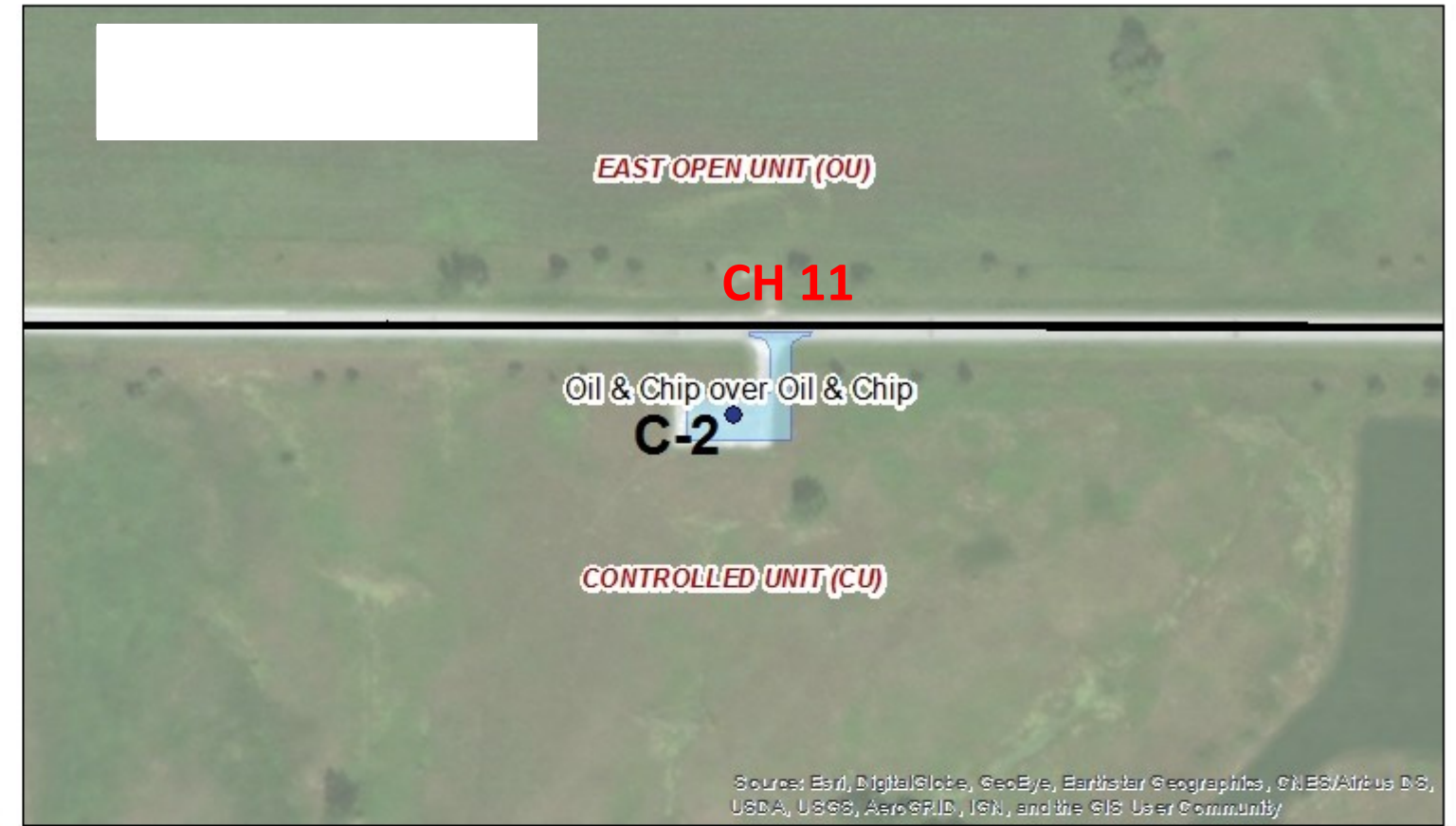
Measured 4,500 linear feet of cracks with variable depths and widths
Assume 1,000 pound crack filling

Both Locations Approximately 100 Ft West of CH 11 over an existing culvert			
Location	Size	Area (SQYD)	SDRipRap A5 (Tons)
South Side of Q-13 Rd	16Ft x 27Ft	48.00	54.27
North Side of Q-13 Rd	22Ft x 46 Ft	112.44	127.12

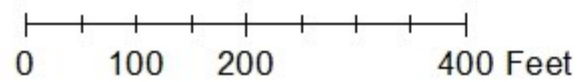
Assume 1.85 ton/CuYd for RR5
Using Stone Dump RipRap RR5 At 22" thick. No bedding or Filter fabric due to steepness of location.



Plan View-Jim Edgar Panther Creek Fish and Wildlife Area



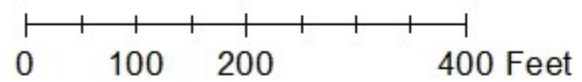
N



Plan View-Jim Edgar Panther Creek Fish and Wildlife Area



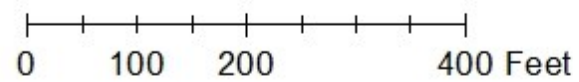
N
S



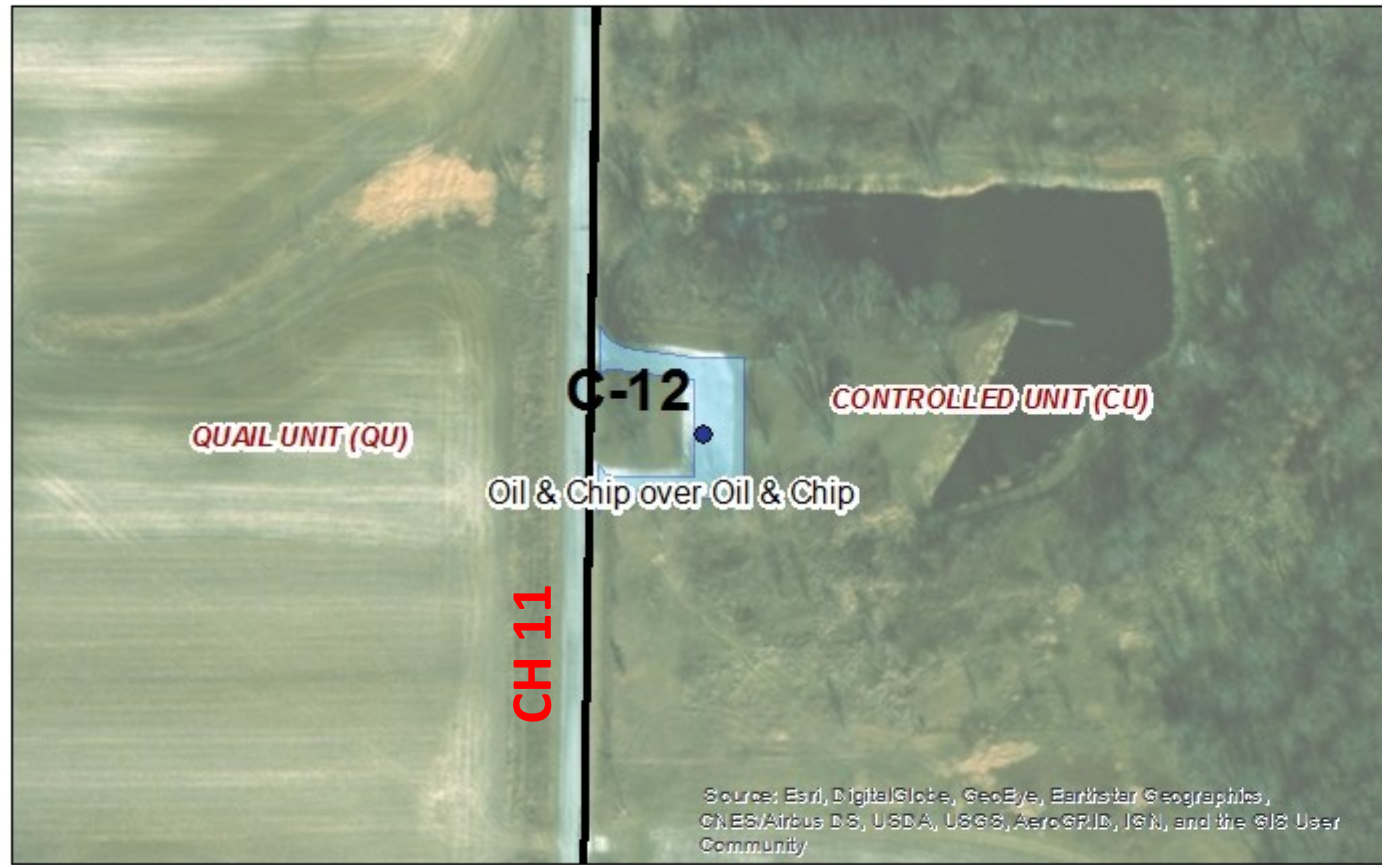
Plan View-Jim Edgar Panther Creek Fish and Wildlife Area



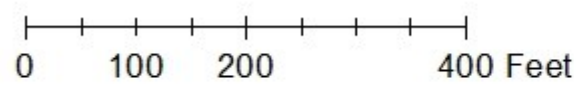
42



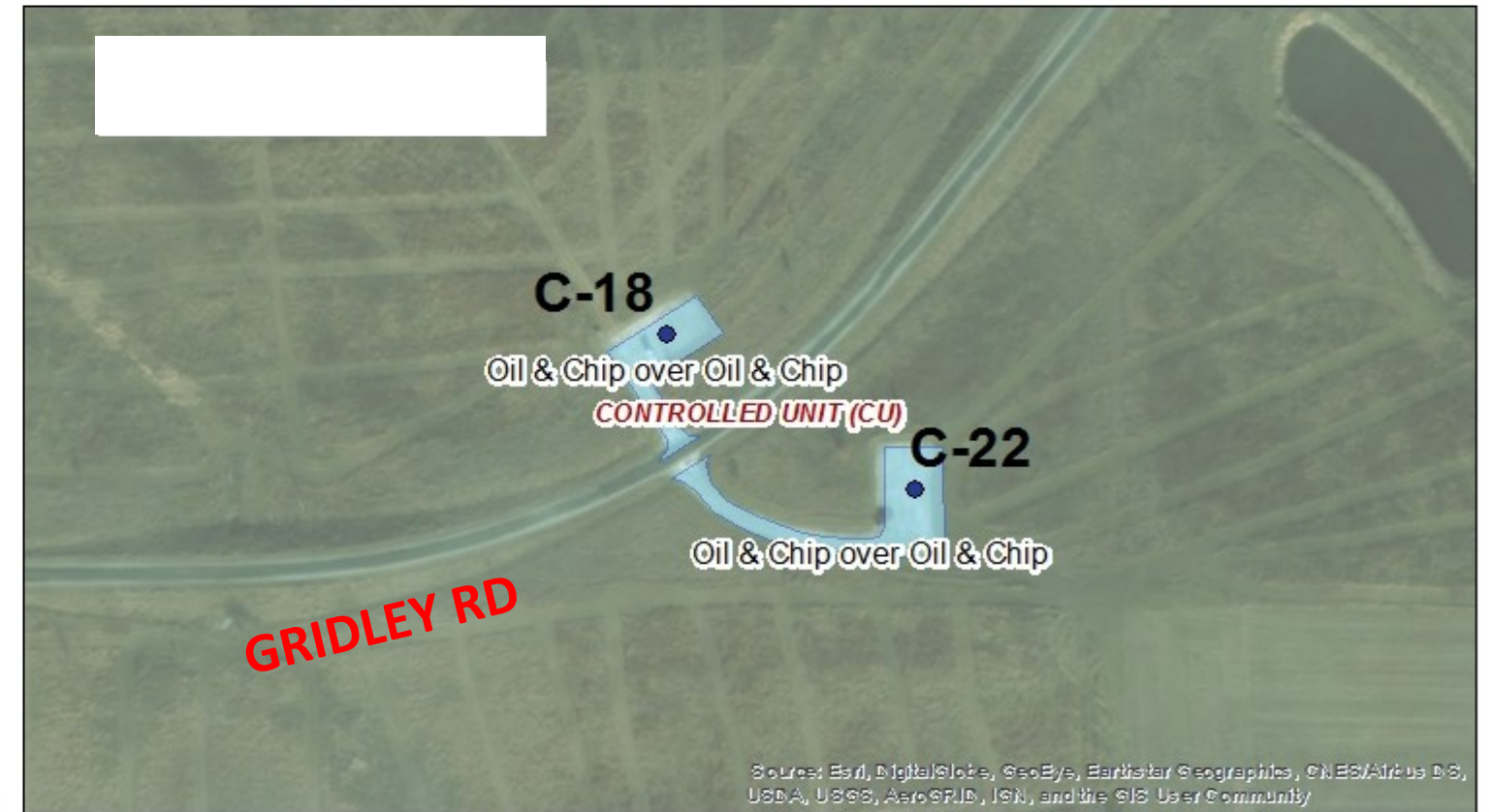
Plan View-Jim Edgar Panther Creek Fish and Wildlife Area



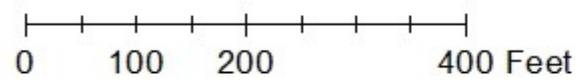
27



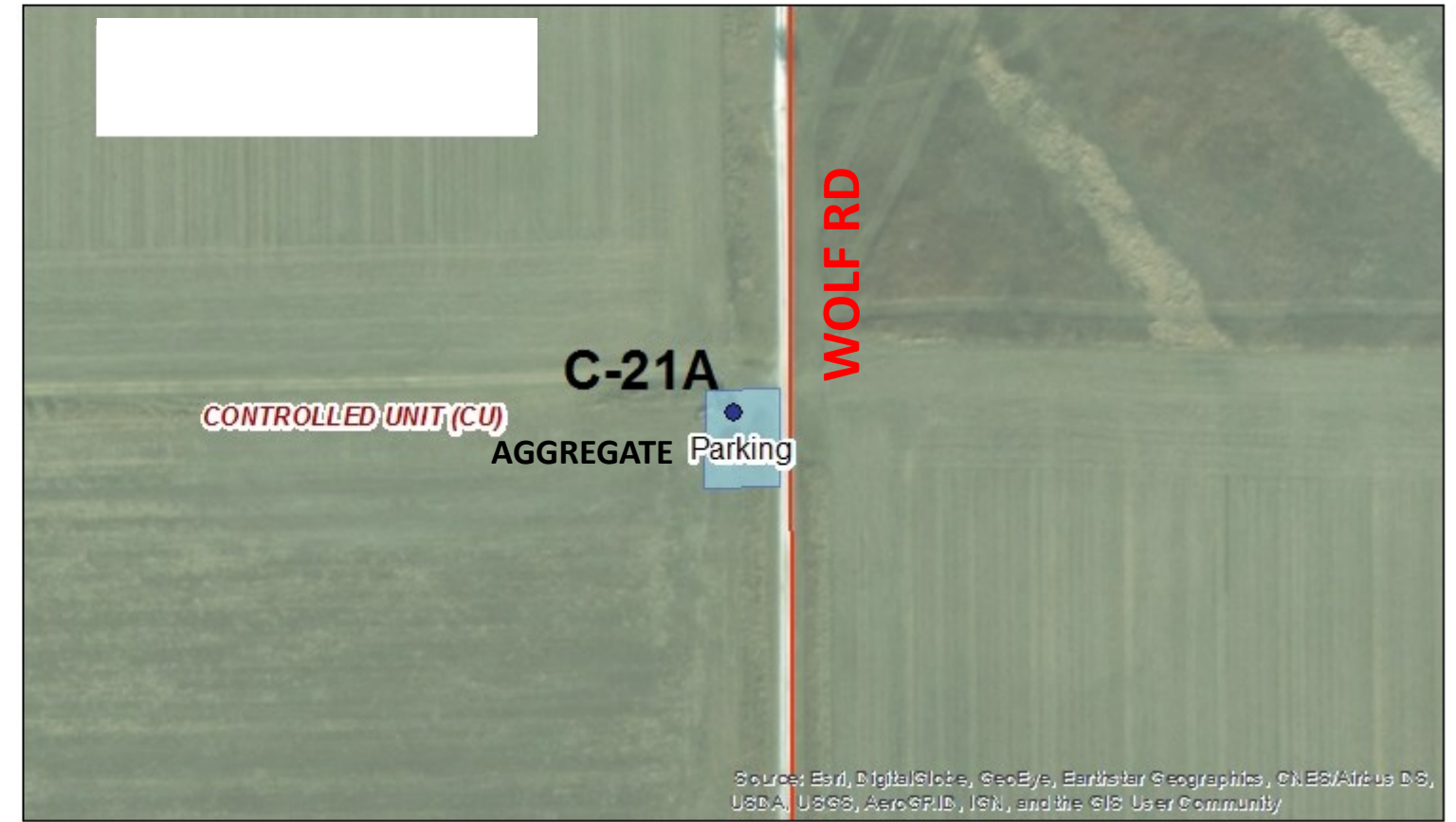
Plan View-Jim Edgar Panther Creek Fish and Wildlife Area



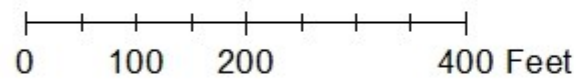
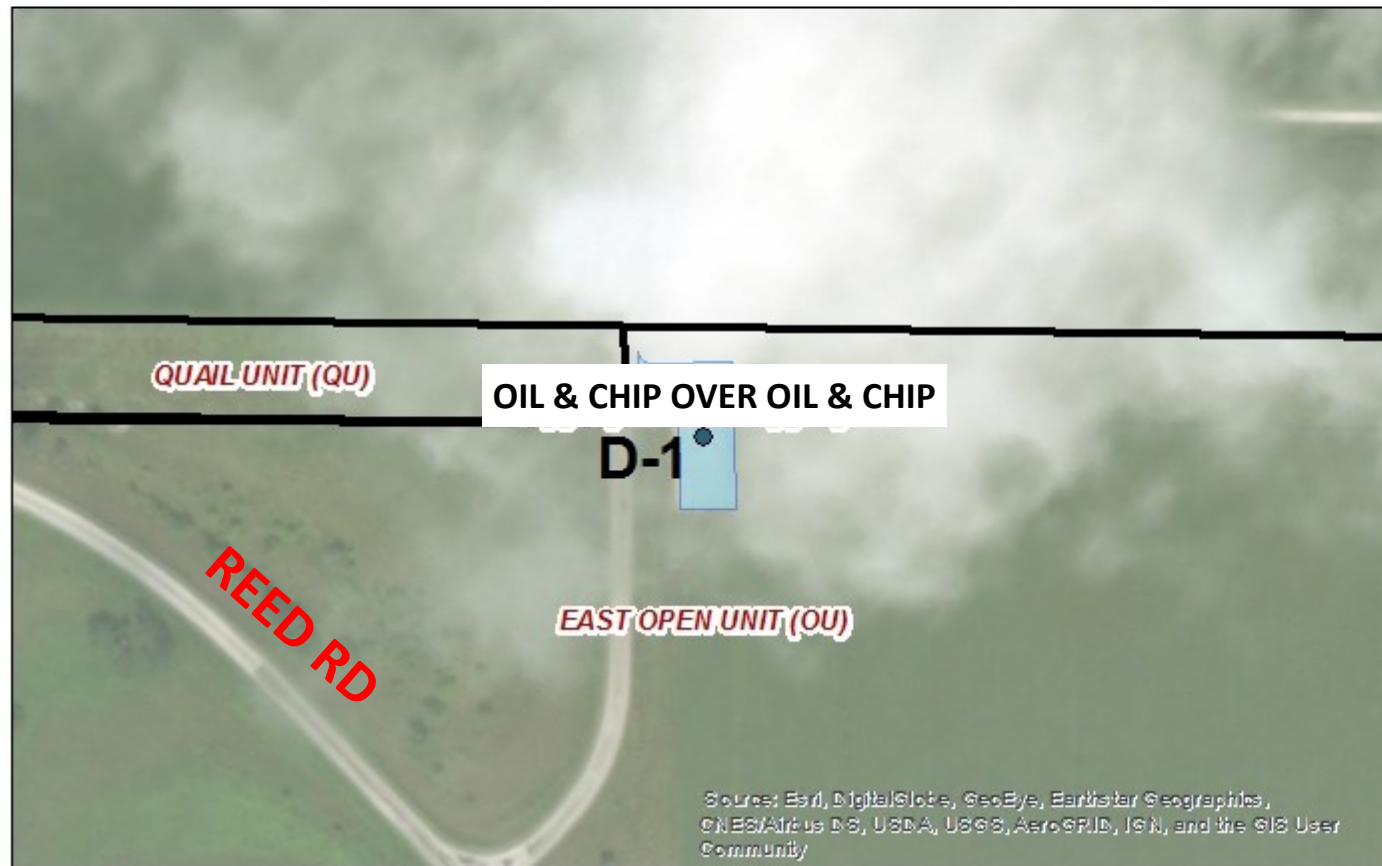
27



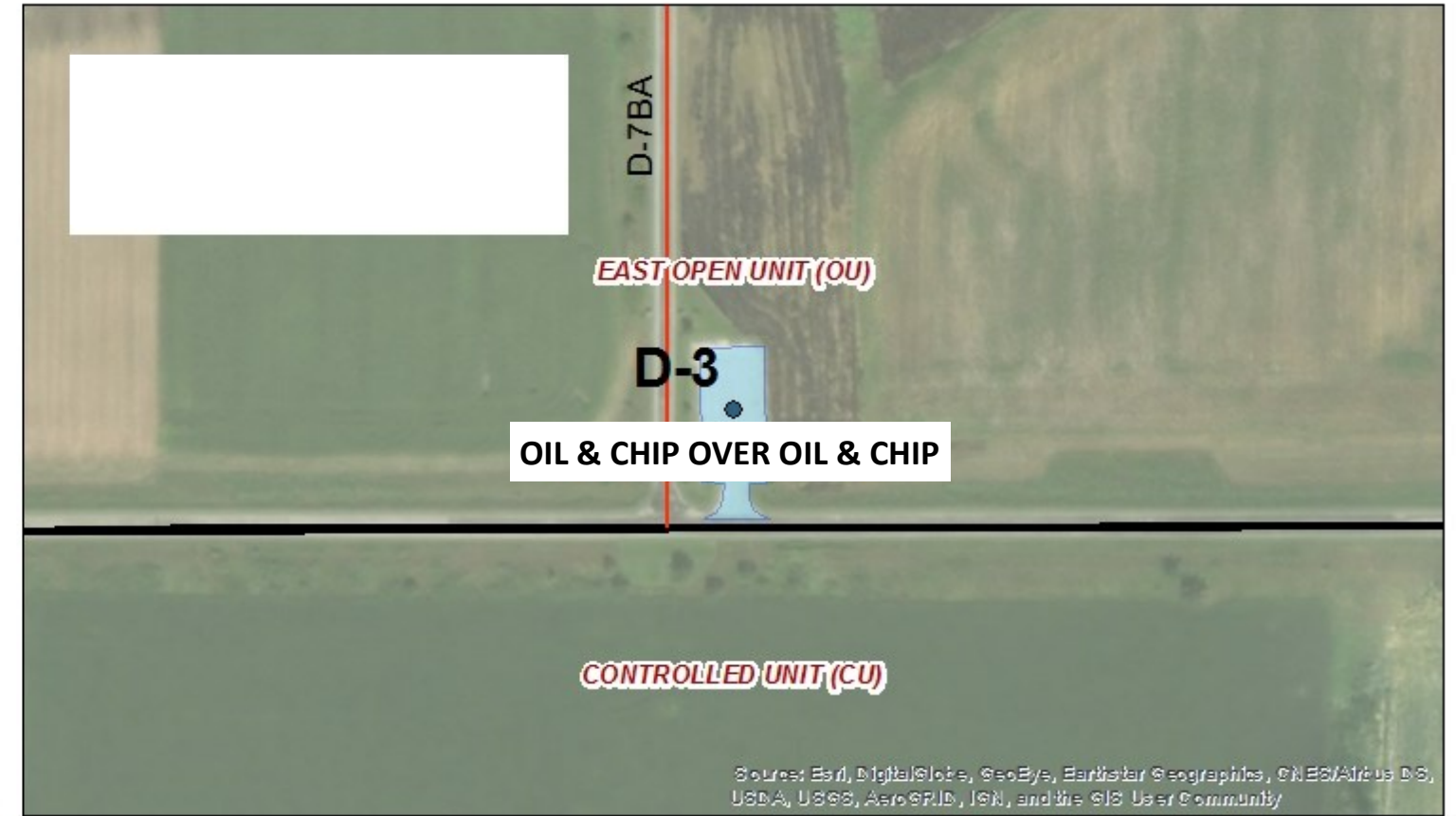
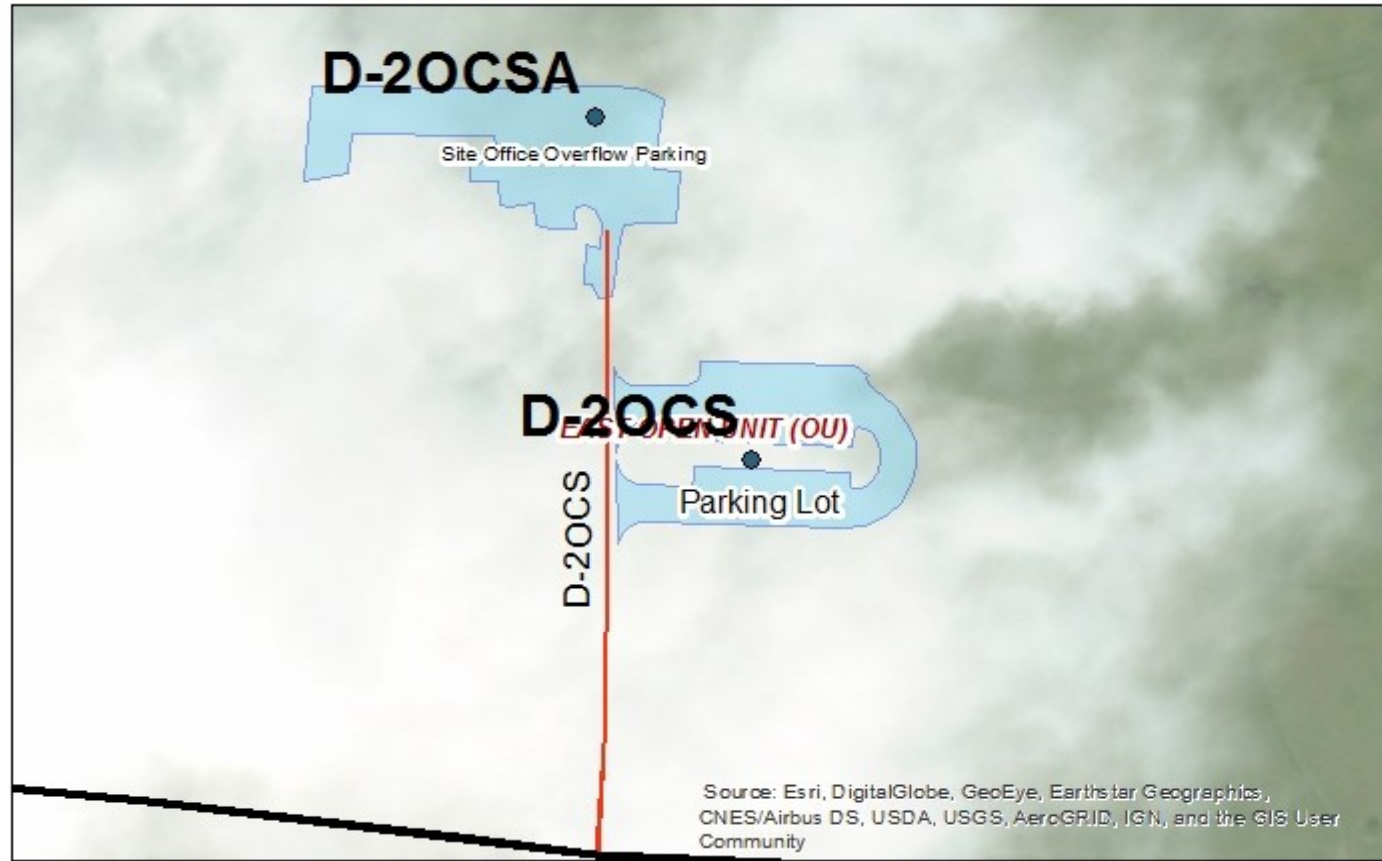
Plan View-Jim Edgar Panther Creek Fish and Wildlife Area



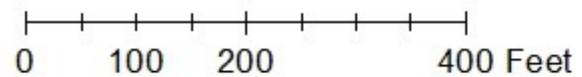
N
↑
↓
S



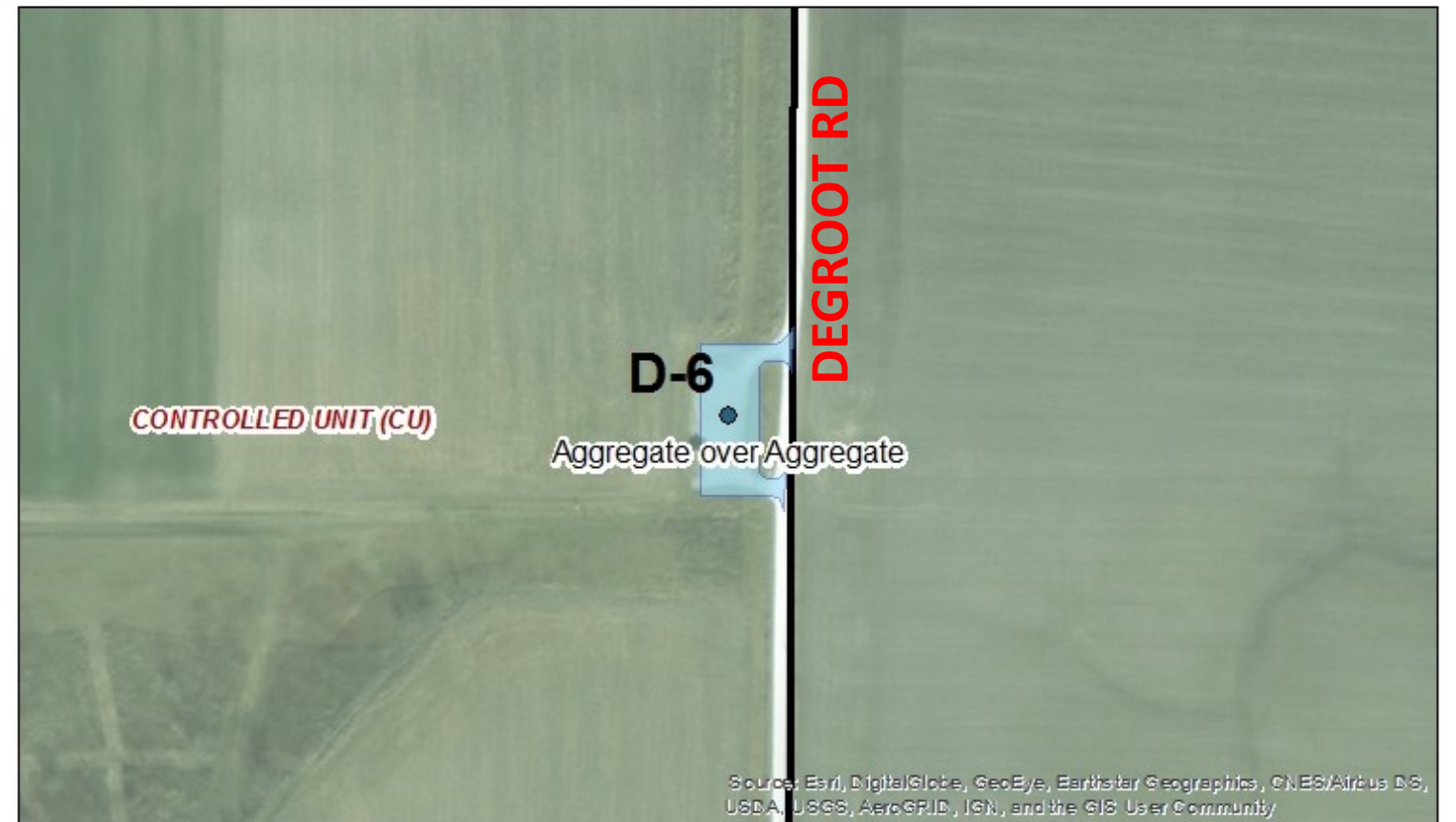
Plan View-Jim Edgar Panther Creek Fish and Wildlife Area



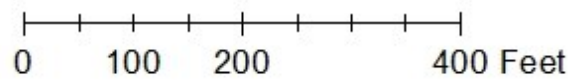
AZ



Plan View-Jim Edgar Panther Creek Fish and Wildlife Area



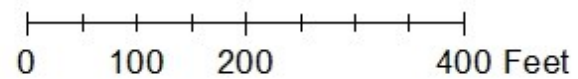
27



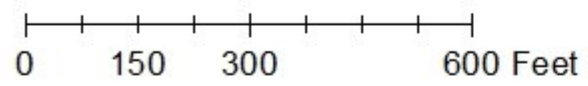
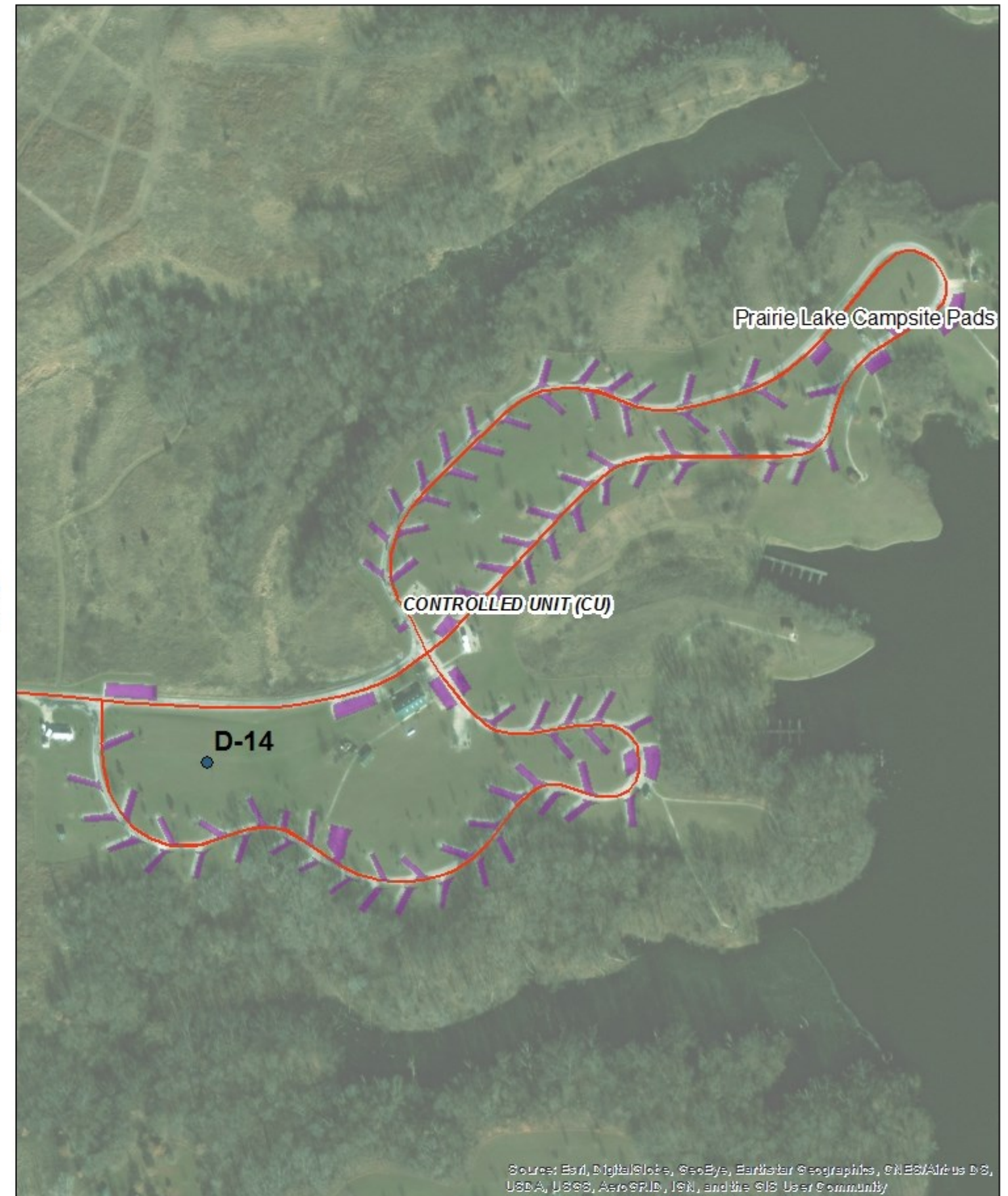
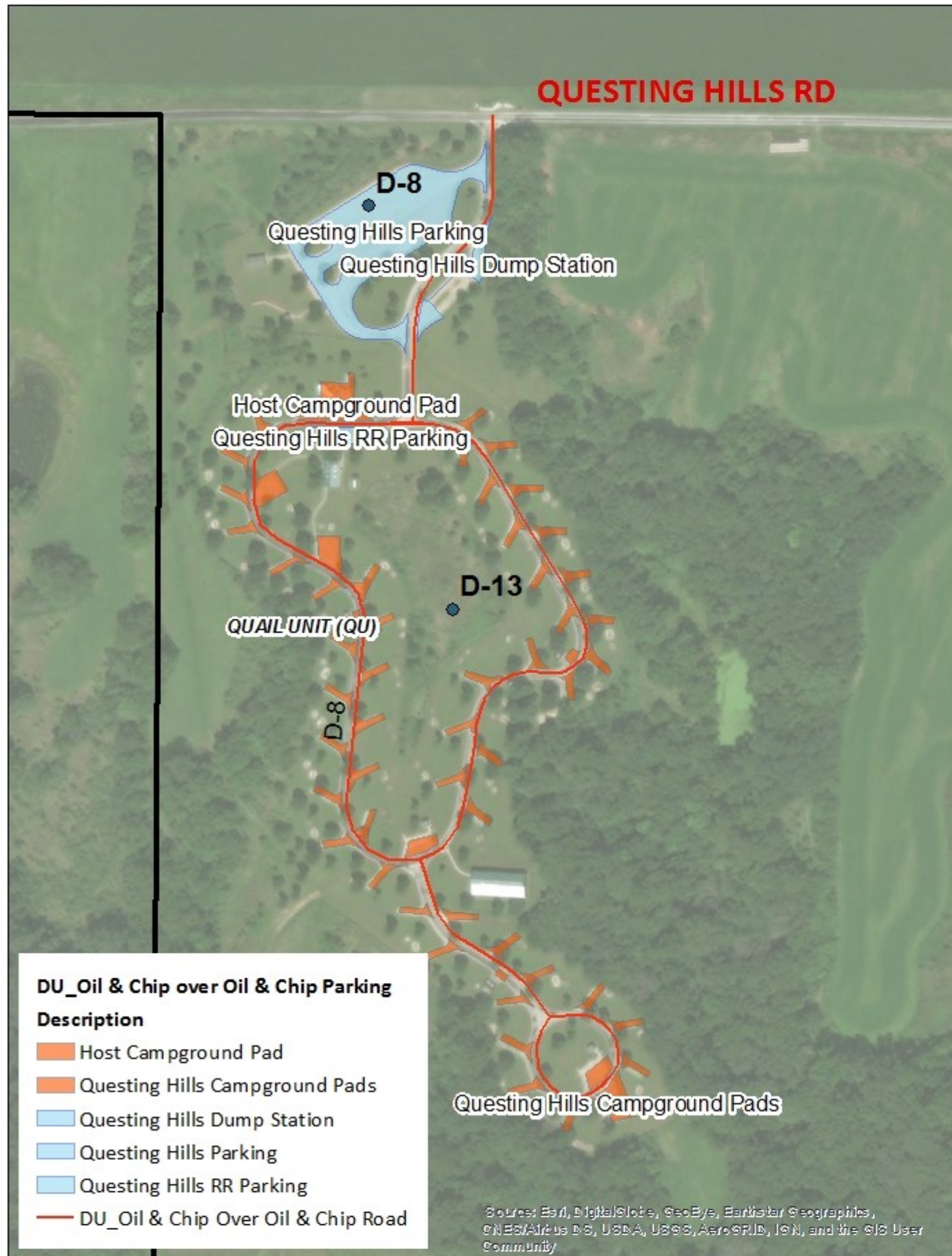
Plan View-Jim Edgar Panther Creek Fish and Wildlife Area



27



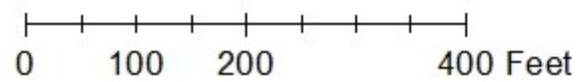
Plan View-Jim Edgar Panther Creek Fish and Wildlife Area



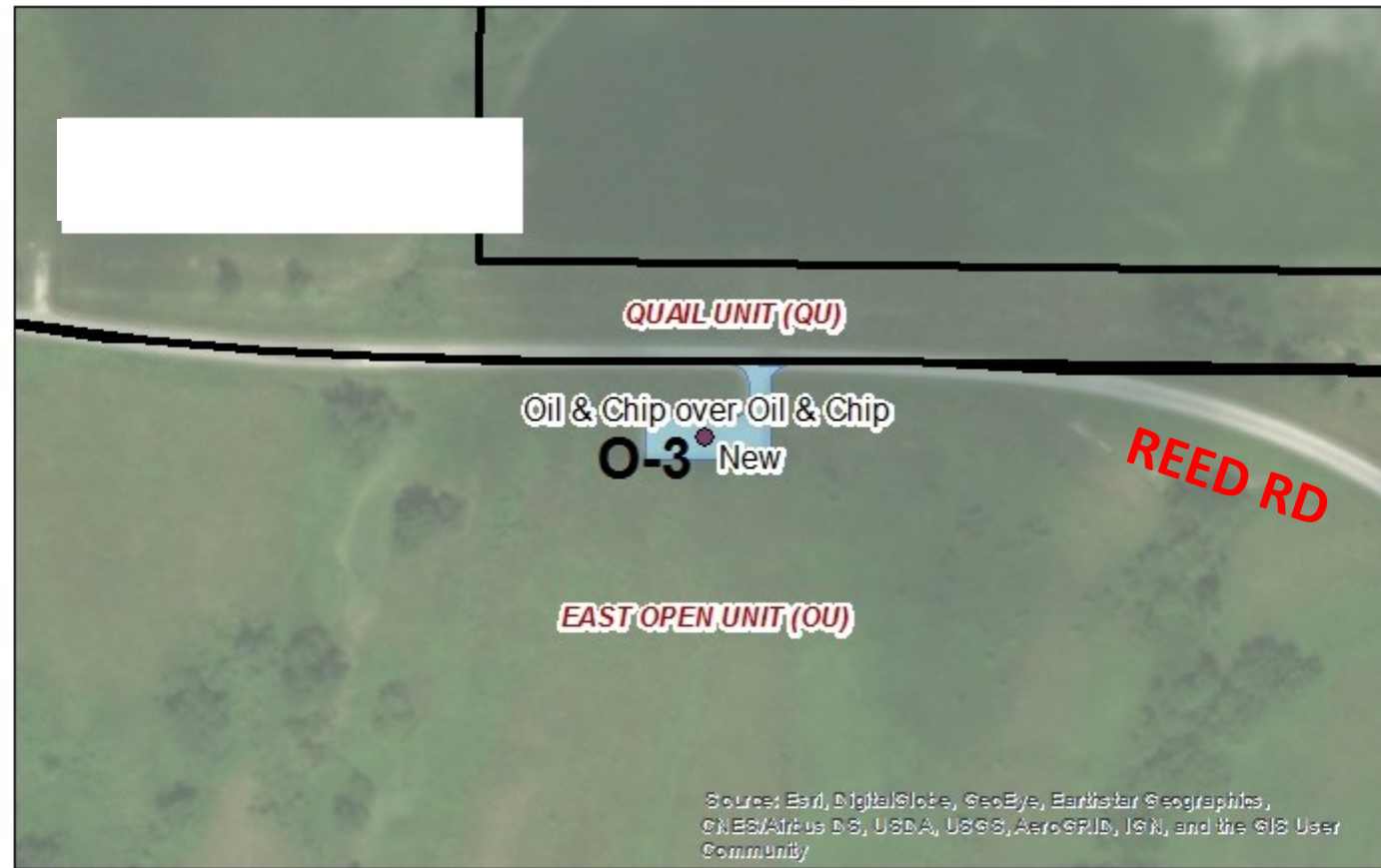
Plan View-Jim Edgar Panther Creek Fish and Wildlife Area



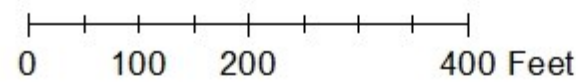
42



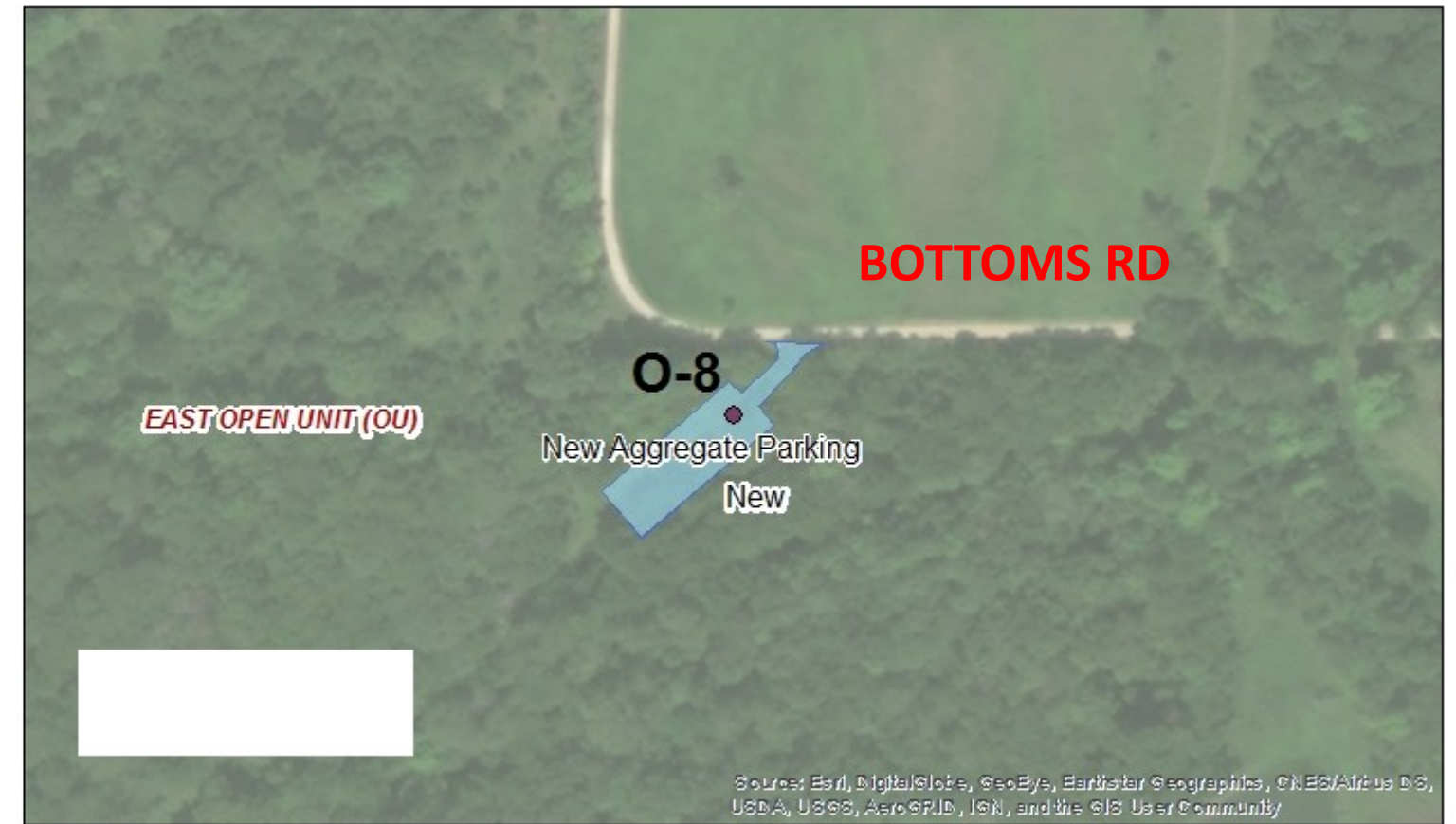
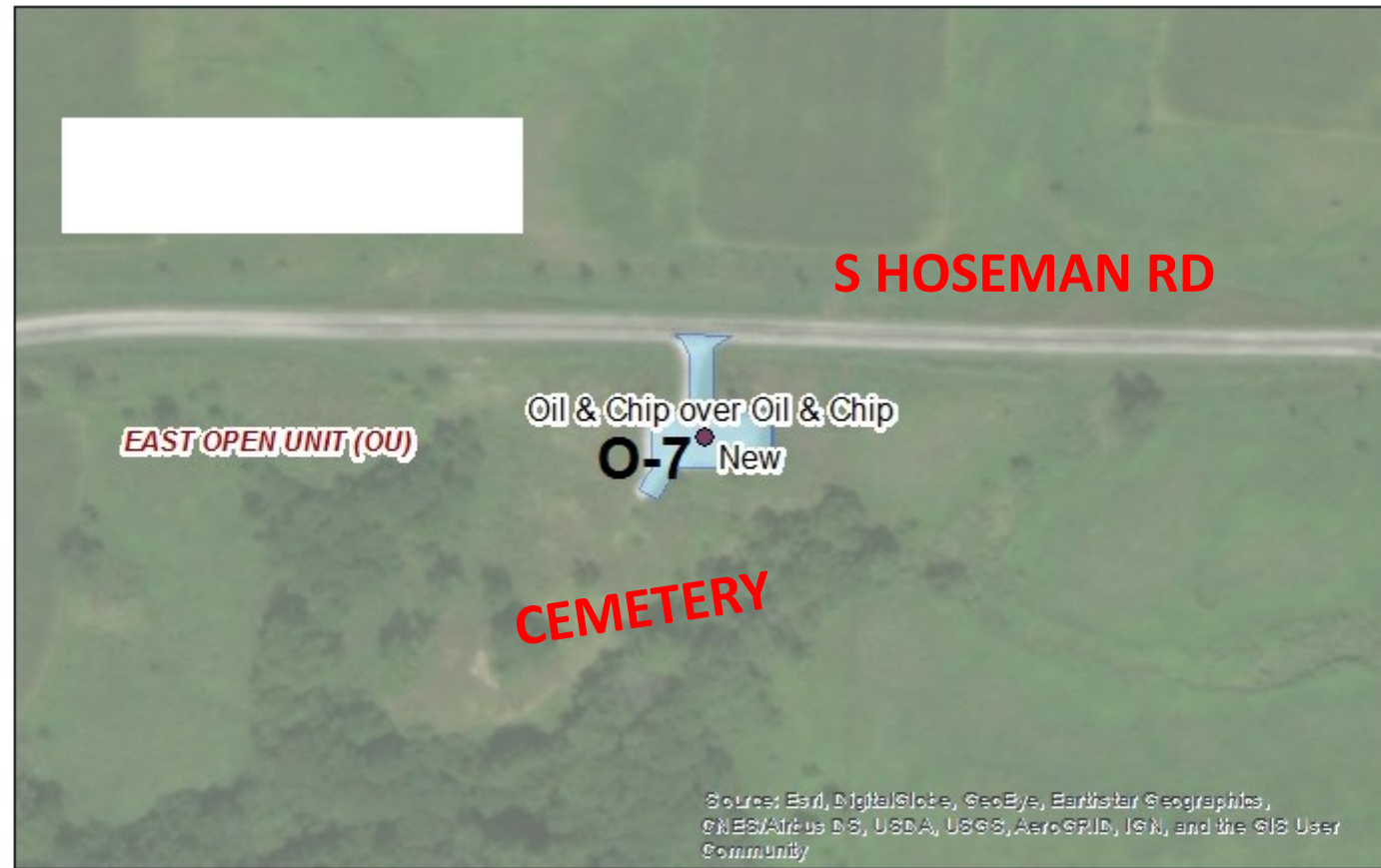
Plan View-Jim Edgar Panther Creek Fish and Wildlife Area



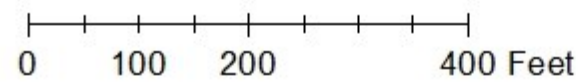
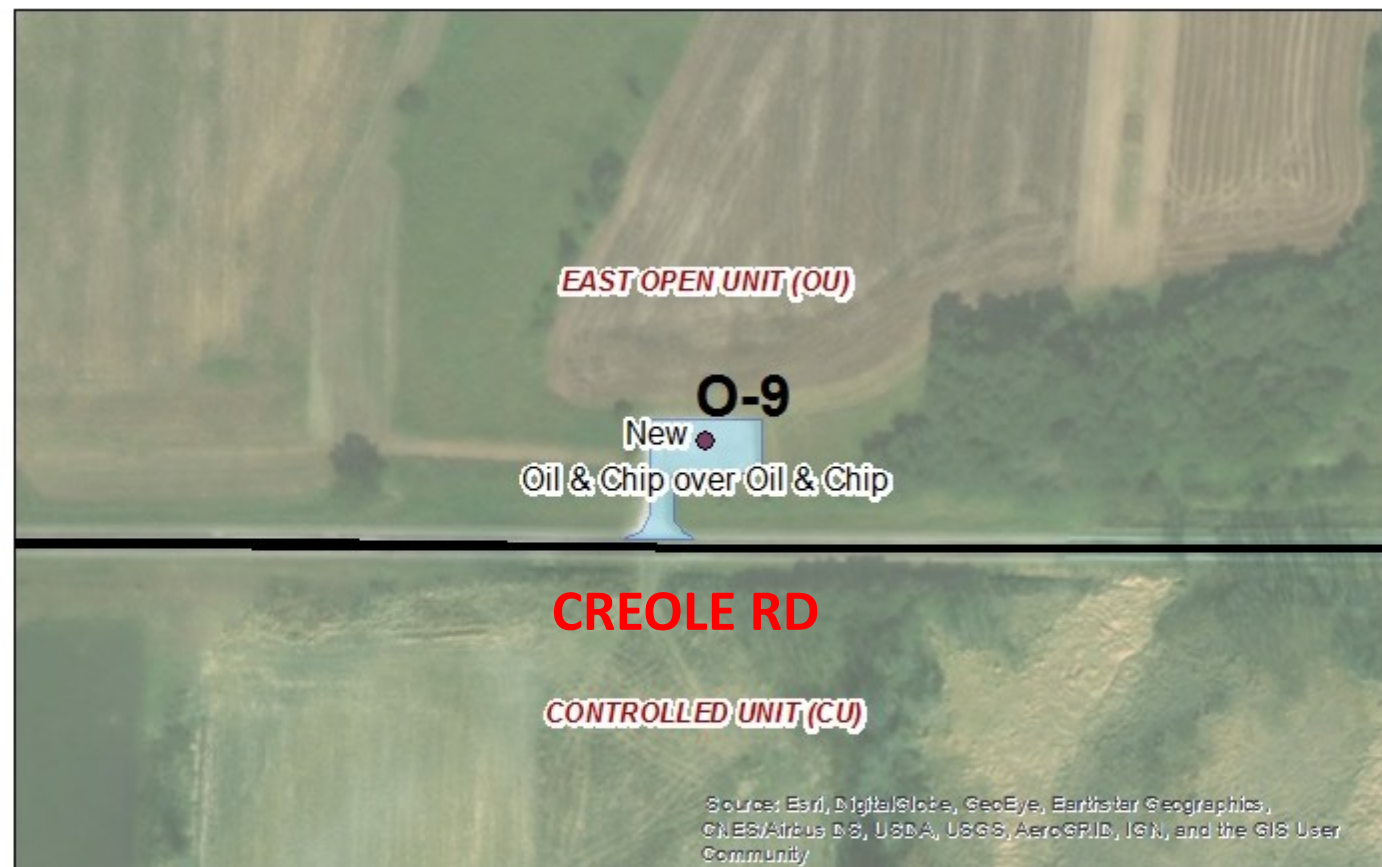
27



Plan View-Jim Edgar Panther Creek Fish and Wildlife Area

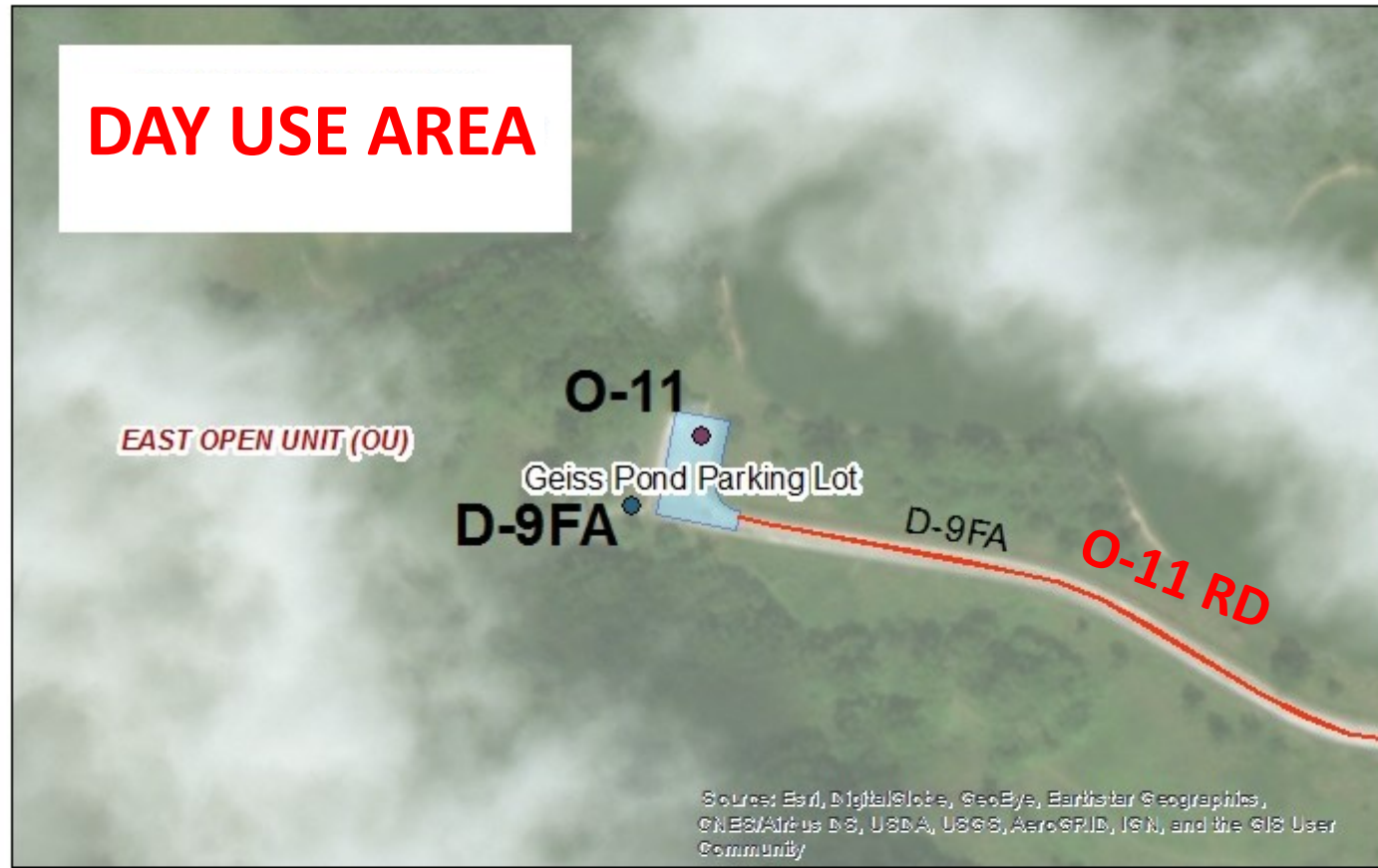


27

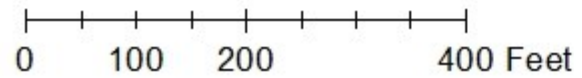


Plan View-Jim Edgar Panther Creek Fish and Wildlife Area

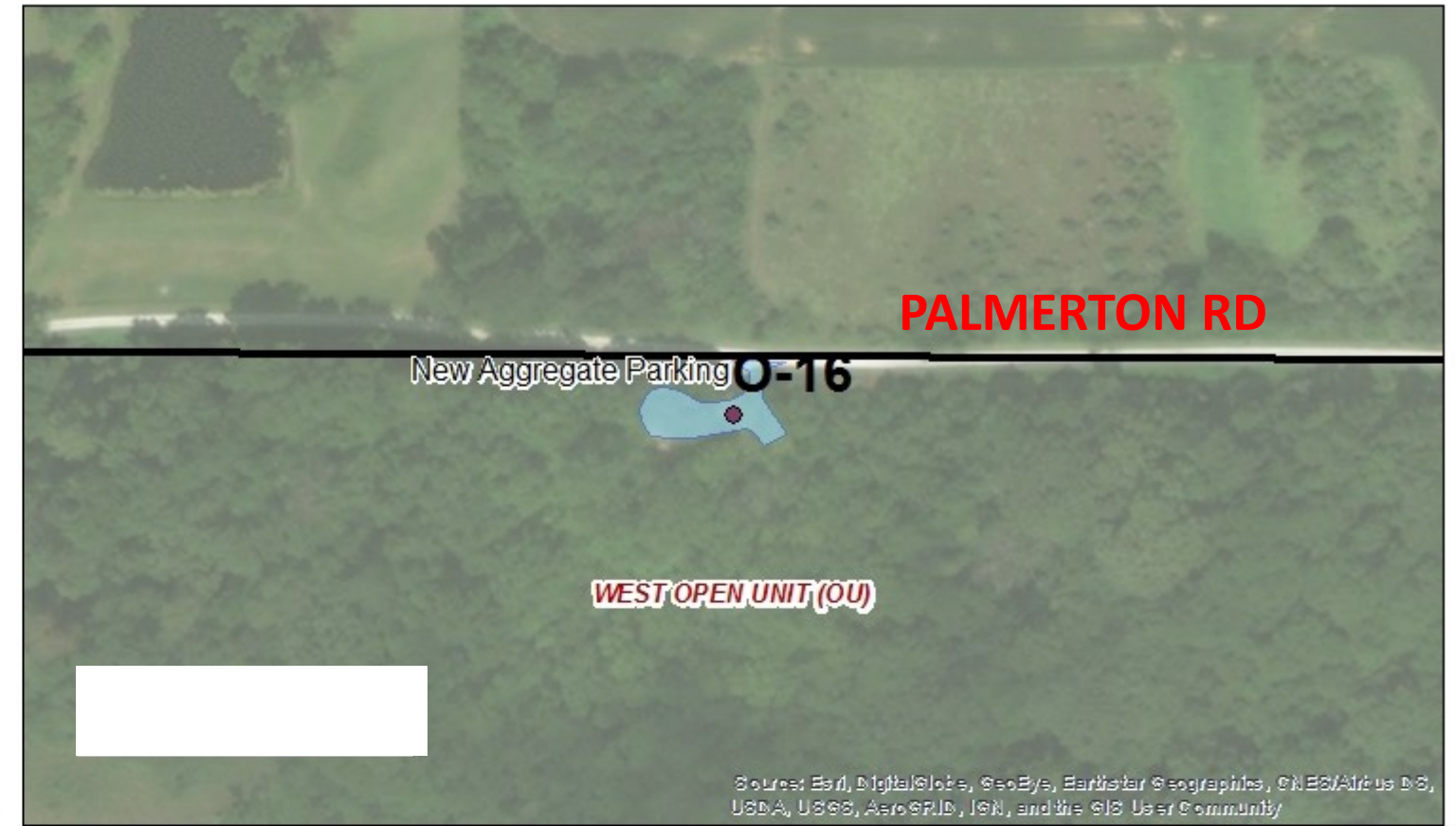
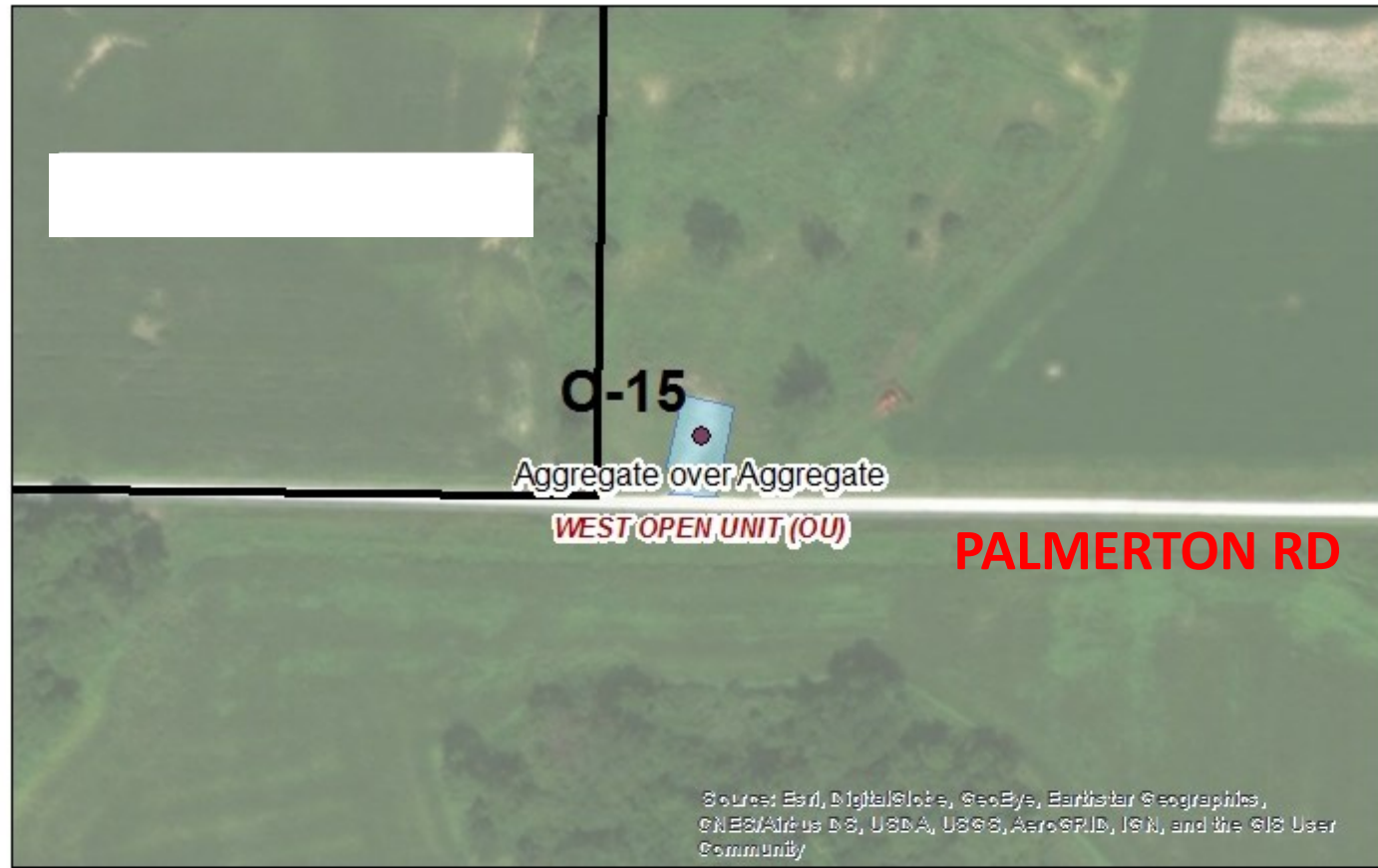
DAY USE AREA



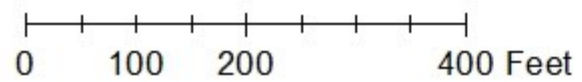
N
↑
Z
↓



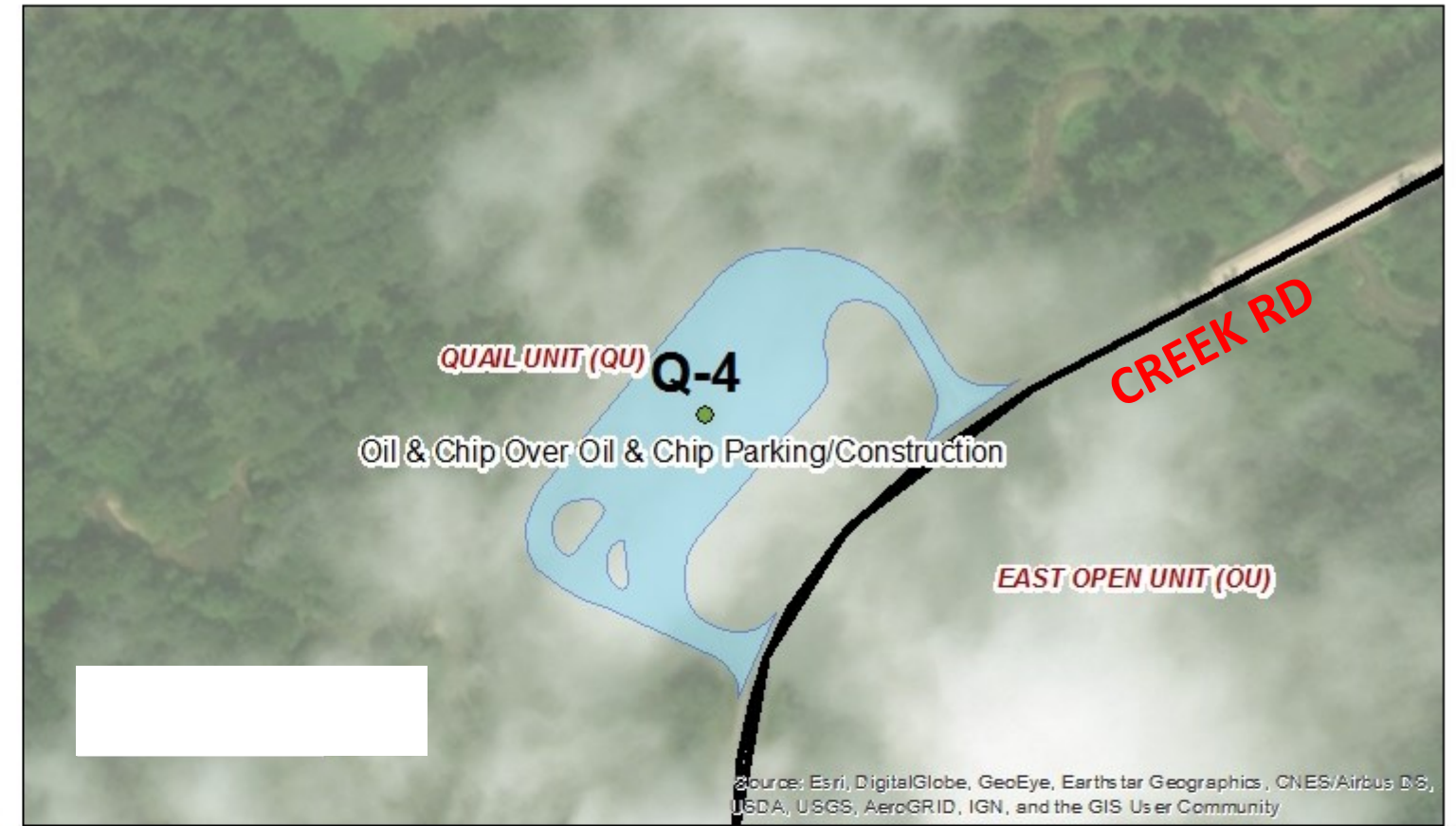
Plan View-Jim Edgar Panther Creek Fish and Wildlife Area



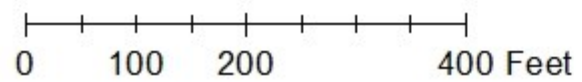
N
↑
↓
S



Plan View-Jim Edgar Panther Creek Fish and Wildlife Area



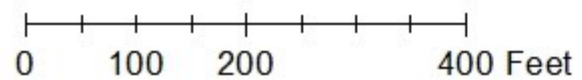
N
S



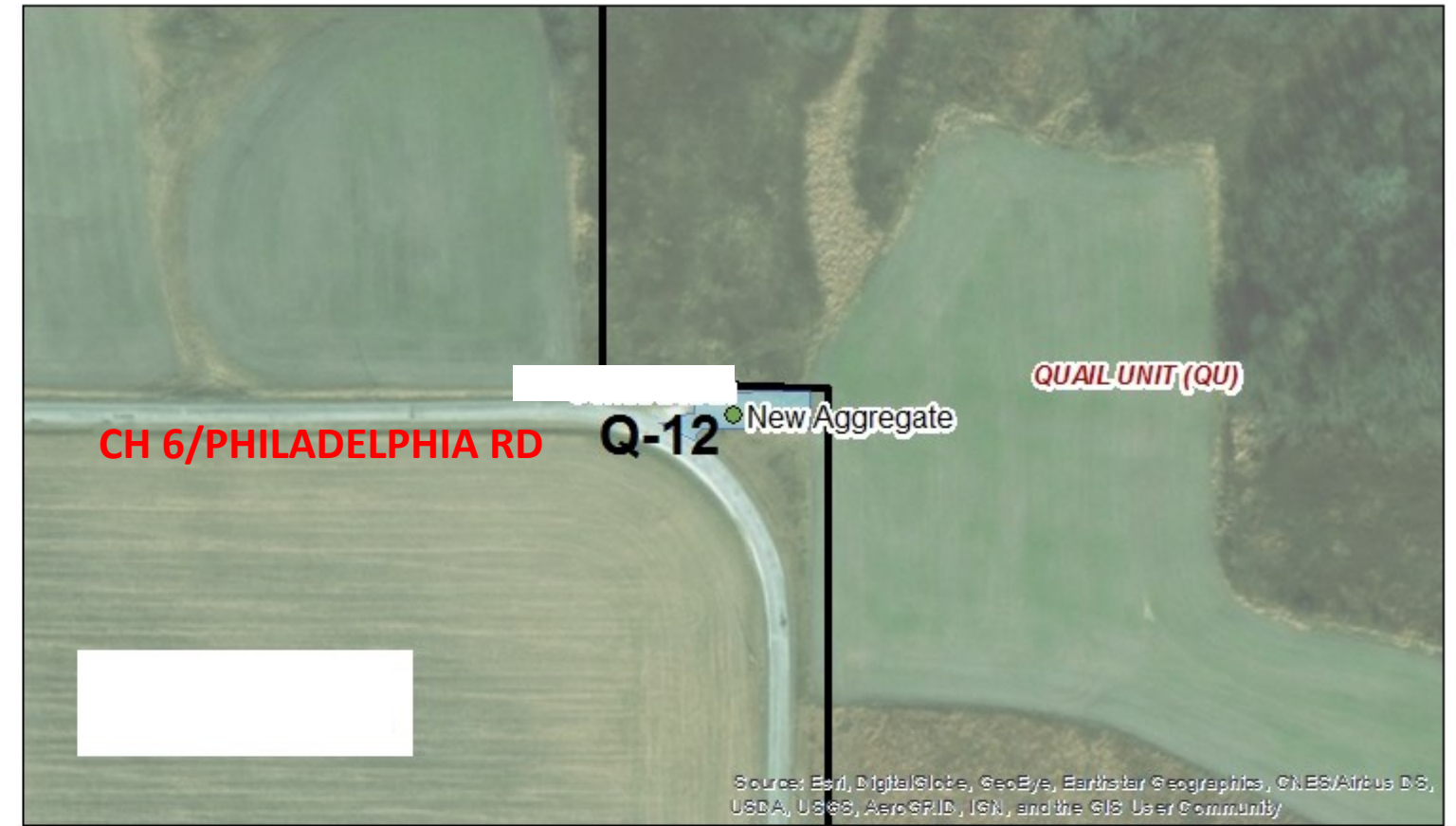
Plan View-Jim Edgar Panther Creek Fish and Wildlife Area



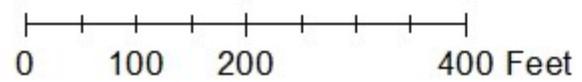
N



Plan View-Jim Edgar Panther Creek Fish and Wildlife Area



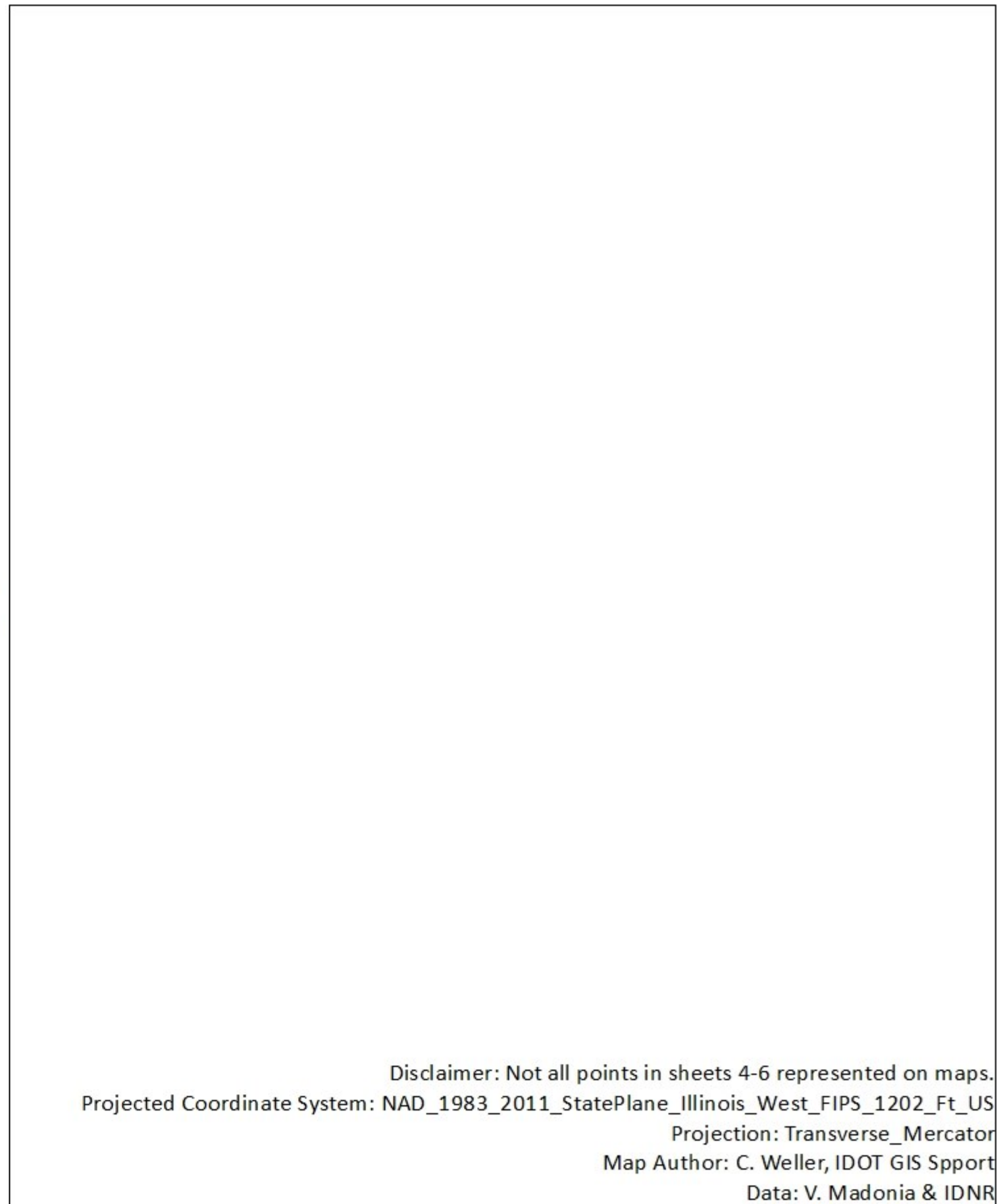
N
S



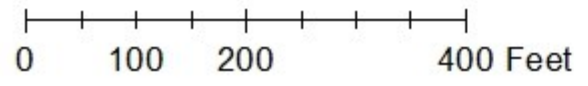
Plan View-Jim Edgar Panther Creek Fish and Wildlife Area



27



Disclaimer: Not all points in sheets 4-6 represented on maps.
 Projected Coordinate System: NAD_1983_2011_StatePlane_Illinois_West_FIPS_1202_Ft_US
 Projection: Transverse_Mercator
 Map Author: C. Weller, IDOT GIS Sport
 Data: V. Madonia & IDNR



Plan View-Jim Edgar Panther Creek Fish and Wildlife Area