

04-27-2018 LETTING ITEM 131

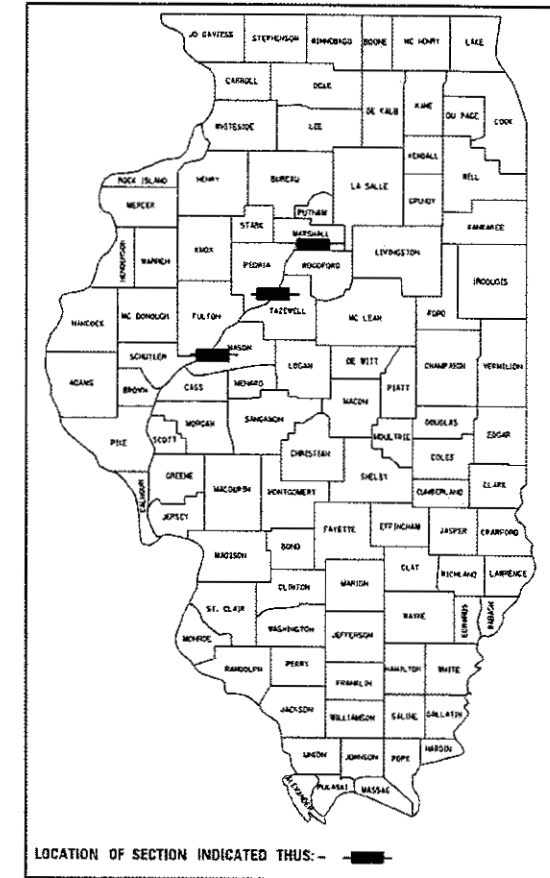
STATE OF ILLINOIS  
DEPARTMENT OF TRANSPORTATION  
DIVISION OF HIGHWAYS

**PROPOSED  
HIGHWAY PLANS**

VARIOUS ROUTES  
SECTION D4 BRIDGE WASHING 2018  
PROJECT NHPP-STP-P905(229)  
BRIDGE WASHING  
MARSHALL, MASON AND TAZEWELL COUNTIES  
C-94-016-18

F.A. R.T.E.	SECTION	COUNTY	TOTAL SHEETS	SHEET NO.
VAR	D4 BRIDGE WASHING 2018	ILLINOIS	15	1
ILLINOIS CONTRACT 68E01			MARSHALL, MASON AND TAZEWELL	

D-94-014-18



INDEX OF SHEETS

- 1. Cover Sheet
- 2-3 Summary of Quantities
- 4. General Notes
- 5-15 Plan Sheets

STANDARDS

701101-05	701406-11
701106-02	701411-09
701201-04	701421-08
701206-04	701428-01
701400-09	701602-09
701401-11	701606-10
	701901-07

ADT

Location 1	2,500
Location 2	7,000
Location 3	40,300
Location 4	40,300
Location 5	61,300
Location 6	20,100
Location 7	11,800
Location 8	14,500
Location 9	5,600

J.U.L.I.E.  
JOINT UTILITY LOCATION INFORMATION FOR EXCAVATION  
1-800-892-0123  
OR 811

PROJECT ENGINEER TOM INGLIS (309)671-3450  
PROJECT MANAGER MIKE LEWIS (309) 671-3454  
CONTRACT NO. 68E01  
CATALOG NO. 035537-00D



LOCATION 1  
S.N. 062-0036  
LOCATION 2  
S.N. 062-0003

LOCATION 3&4  
S.N. 090-0115/0070

LOCATION 5  
S.N. 090-0001

LOCATION 6  
S.N. 090-0122

LOCATION 7  
S.N. 090-0030

LOCATION 8  
S.N. 090-0114

LOCATION 9  
S.N. 063-0002

STATE OF ILLINOIS  
DEPARTMENT OF TRANSPORTATION  
SUBMITTED JAN 31 2018  
Ronald A. Barnett  
REGION THREE ENGINEER  
MAY 23 2018  
C. J. ...  
ENGINEER OF DESIGN AND ENVIRONMENT  
MAY 23 2018  
DIRECTOR OF HIGHWAYS PROJECT IMPLEMENTATION

PRINTED BY THE AUTHORITY  
OF THE STATE OF ILLINOIS

2232  
STD

2001  
NHPP

M0E1  
NHPP

2601  
NHPP

CODE NO.	ITEM	UNIT	TOTAL QUANTITY	CONSTRUCTION CODE			
				MARSHALL 80 /20	TAZEWELL 80 /20	TAZEWELL 90/10	MASON 80 /20
				(FED) (STATE)	(FED) (STATE)	(FED) (STATE)	(FED) (STATE)
				0047 RURAL	0047 URBAN	0047 URBAN	0047 RURAL
59200101	BRIDGE WASHING NO. 1	EACH	1	1			
59200102	BRIDGE WASHING NO. 2	EACH	1	1			
59200103	BRIDGE WASHING NO. 3	EACH	1		1		
59200104	BRIDGE WASHING NO. 4	EACH	1		1		
59200105	BRIDGE WASHING NO. 5	EACH	1			1	
59200106	BRIDGE WASHING NO.6	EACH	1		1		
59200107	BRIDGE WASHING NO. 7	EACH	1		1		
59200108	BRIDGE WASHING NO. 8	EACH	1		1		
59200109	BRIDGE WASHING NO. 9	EACH	1				1
67100100	MOBILIZATION	L SUM	1	0.20	0.50	0.20	0.10
70100310	TRAFFIC CONTROL AND PROTECTION, STANDARD 701421	L SUM	1		1		
70100420	TRAFFIC CONTROL AND PROTECTION, STANDARD 701411	EACH	3		1	2	
70100450	TRAFFIC CONTROL AND PROTECTION, STANDARD 701201	L SUM	1	0.66			0.34
70100700	TRAFFIC CONTROL AND PROTECTION, STANDARD 701406	L SUM	1			1	

MODEL: Default  
 FILE NAME: S:\GEN\DRFT\STD\PLN\Squad15\_in\114\68E1-Bridge Washing 2018.dgn

USER NAME = jng1stj	DESIGNED -	REVISED -
	DRAWN -	REVISED -
PLOT SCALE = 101.3812' / 1"	CHECKED -	REVISED -
PLOT DATE = 2/1/2018	DATE -	REVISED -

STATE OF ILLINOIS  
DEPARTMENT OF TRANSPORTATION

SUMMARY OF QUANTITIES

F.A. RTE.	SECTION	COUNTY	TOTAL SHEETS	SHEET NO.
VAR	D4 BRIDGE WASHING 2018	*	15	2
MARSHALL, MASON AND TAZEWELL			CONTRACT NO. 68E01	
ILLINOIS FED. AID PROJECT				



## COMMITMENTS

No Commitments have been made for this project.

## GENERAL NOTES

### Location 1-5 & 9:

Expansion joints 10 feet either side of deck joints down to the bearings, top of pier and abutment caps. Entire lower cord, outside fascia of the stringer beam and the bottom of the bottom flange of the truss section. Entire truss above the deck and the underside of the approach from abutment to the beginning of the truss.

### Location 6,7 and 8:

Entire structure shall be done in accordance with Section 592 of the "Standard Specifications for Road and Bridge Construction, Adopted April 1, 2016, (revised January 1, 2018)."

### All bridge locations 1-9:

Shall include washing of the bridge deck surfaces, curbs, sidewalks, parapets, median barrier wall, deck drains, and drainage systems. This work will not be paid for separately, but will be included in the cost of the bridge washing pay items.

MODEL: D:\p1\it  
FILE NAME: SUGEN\DRAWING\TDS\67\MS\SOUND15.mpl\04\BRD1-Bridge Washing 2018.dgn

USER NAME = Ingtjt	DESIGNED -	REVISED -
	DRAWN -	REVISED -
PLOT SCALE = 101.3092' / in.	CHECKED -	REVISED -
PLOT DATE = 2/1/2018	DATE -	REVISED -

STATE OF ILLINOIS  
DEPARTMENT OF TRANSPORTATION

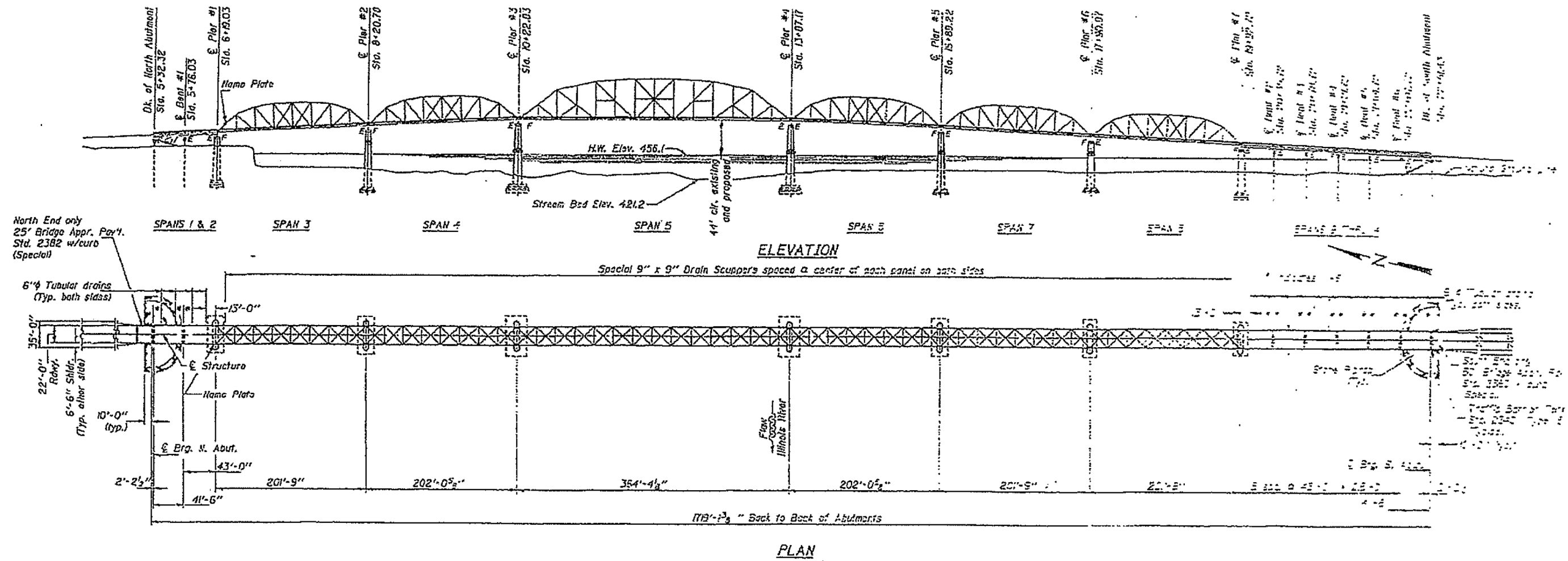
### GENERAL NOTES

SCALE: SHEET OF SHEETS STA. TO STA.

F.A. RTE.	SECTION	COUNTY	TOTAL SHEETS	SHEET NO.
	D4 BRIDGE WASHING 2018	*	15	4
* MARSHALL MASON AND TAZEWELL			CONTRACT NO.	
ILLINOIS FED. AID PROJECT				

# FOR INFORMATION ONLY

## LOCATION 1 (IL 18 OVER ILLINOIS RIVER)

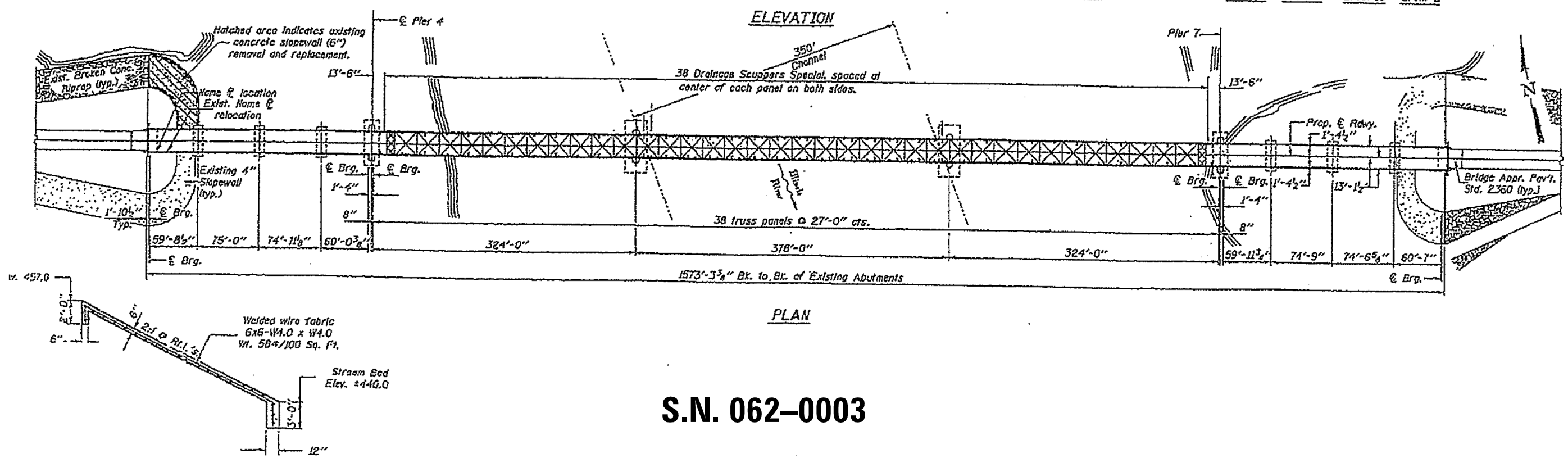
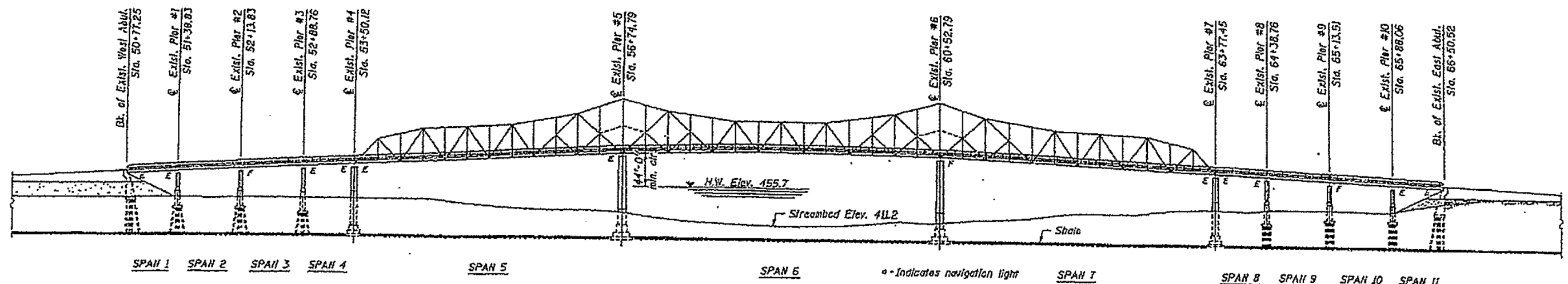


**S.N. 062-0036**

FILE NAME =	USER NAME = inglisjt	DESIGNED -	REVISED -	<b>STATE OF ILLINOIS DEPARTMENT OF TRANSPORTATION</b>	<b>PLAN SHEET</b>			F.A. RTE.	SECTION	COUNTY	TOTAL SHEETS	SHEET NO.	
S:\GEN\DRAW\STD\PLNS\Squad15\inglisjt\B21-Bridge Washing 2013 & others\68E01\68E01-DRAW\Washing 2018.dgn						VAR	D4 BRIDGE WASHING 2018			15	5		
Default	PLOT SCALE = 101.3092' / in.	CHECKED -	REVISED -		SCALE:	SHEET	OF	SHEETS	STA.	TO	STA.	MARSHALL, MASON AND TAZEWELL CONTRACT NO. 68E01	
	PLOT DATE = 2/1/2018	DATE -	REVISED -									ILLINOIS FED. AID PROJECT	

# FOR INFORMATION ONLY

## LOCATION 2 (IL 17 OVER ILLINOIS RIVER)

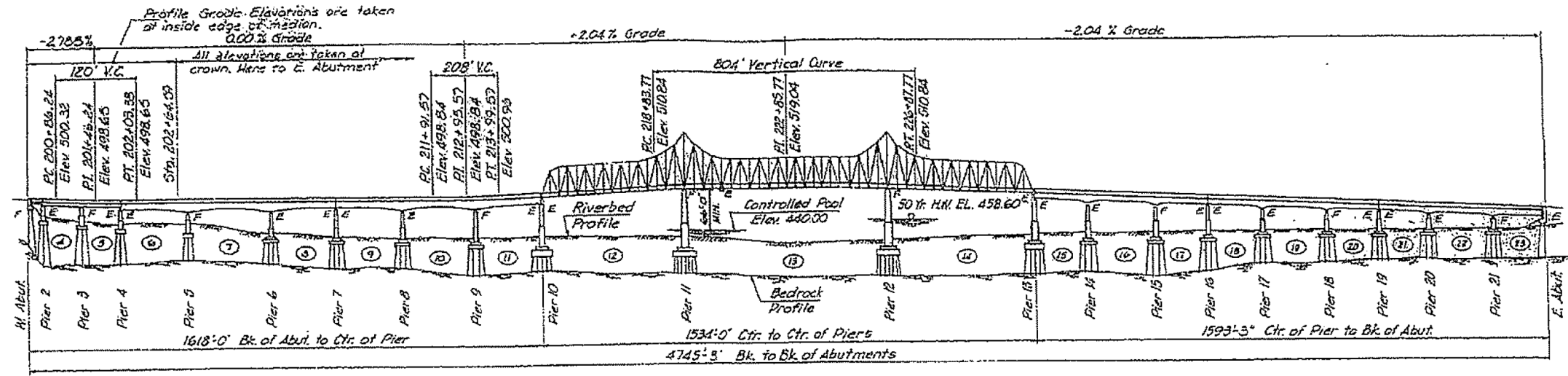


### S.N. 062-0003

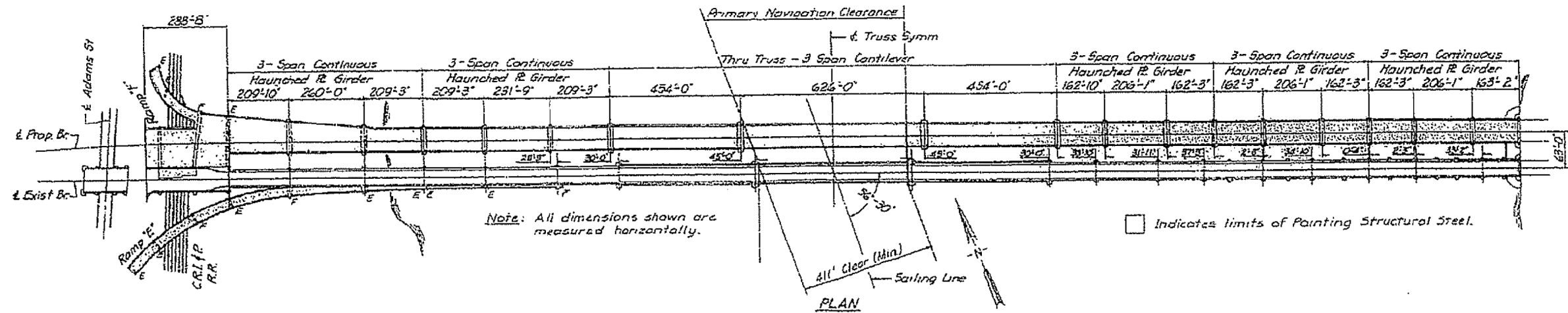
FILE NAME =	USER NAME = inglistj	DESIGNED -	REVISED -	<b>STATE OF ILLINOIS DEPARTMENT OF TRANSPORTATION</b>	<b>PLAN SHEET</b>	F.A. RTE.	SECTION	COUNTY	TOTAL SHEETS	SHEET NO.
S:\GEN\DRAWING\STD\PLNS\Squad15\inglistj\6821-Bridge Washing 2013 & others\68E01\68E01.DWG		DRWN Washing 2018.dgn	REVISED -			VAR	D4 BRIDGE WASHING 2018		15	6
Default	PLOT SCALE = 1/8" = 1'-0"	CHECKED -	REVISED -		SCALE:	MARSHALL, MASON AND TAZEWELL		CONTRACT NO. 68E01		ILLINOIS FED. AID PROJECT
	PLOT DATE = 2/1/2018	DATE -	REVISED -		SHEET	OF	SHEETS	STA.	TO STA.	

# FOR INFORMATION ONLY

## LOCATION 3 (WB US 150) McClugage Bridge



Note:  
 Station Equation  
 Sta. 201+67.45 Back =  
 Sta. 201+64.59 Forward

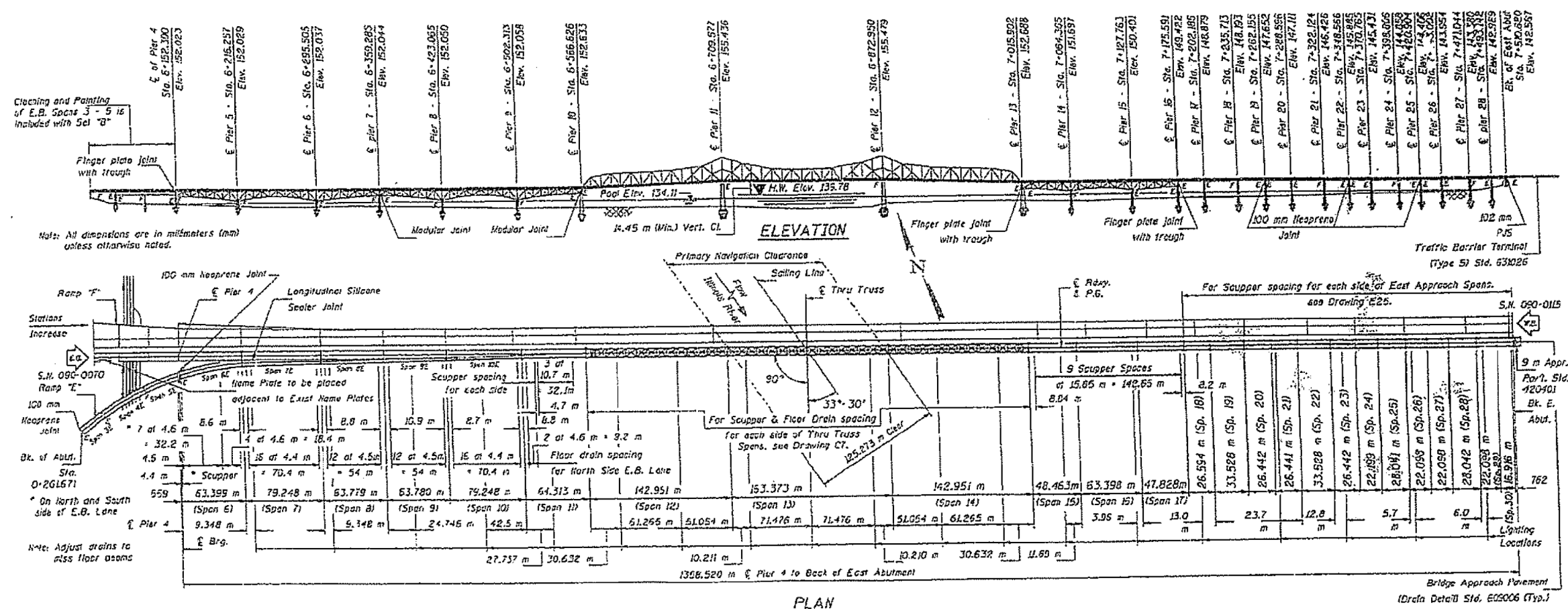


### S.N. 090-0115

FILE NAME =	USER NAME = inglistj	DESIGNED -	REVISED -	<b>STATE OF ILLINOIS DEPARTMENT OF TRANSPORTATION</b>	<b>PLAN SHEET</b>	F.A. RTE.	SECTION	COUNTY	TOTAL SHEETS	SHEET NO.	
S:\GEN\DRAW\STD\PLNS\Squad15\inglistj\B21-Bridge Washing 2013 & others\68E01\68E01.dgn	DRWN: inglistj	WASHING 2018.dgn	REVISED -			VAR	D4 BRIDGE WASHING 2018	.		15	7
Default	PLOT SCALE = 101.3092' / in.	CHECKED -	REVISED -			MARSHALL, MASON AND TAZEVELL CONTRACT NO. 68E01					
	PLOT DATE = 2/1/2018	DATE -	REVISED -			ILLINOIS FED. AID PROJECT					

# FOR INFORMATION ONLY

## LOCATION 4 (EB US 150) McClugage Bridge



### S.N. 090-0070

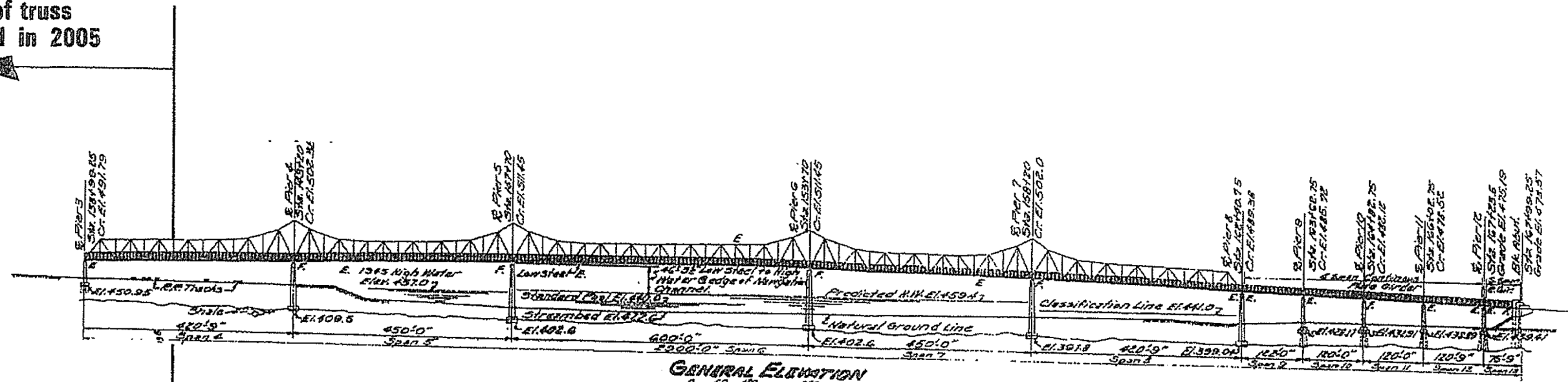
FILE NAME =	USER NAME = inglisj	DESIGNED -	REVISED -	<b>STATE OF ILLINOIS DEPARTMENT OF TRANSPORTATION</b>	<b>PLAN SHEET</b>	F.A. RTE.	SECTION	COUNTY	TOTAL SHEETS	SHEET NO.	
S:\GEN\DRAW\STD&PLNS\Squad15\inglisj\6821-Bridge Washing 2013 & others\68E01\68E01.DWG	B21-Bridge Washing 2013 & others\68E01\68E01.DWG	DRWN Washing 2018.dgn	REVISED -			VAR	D4 BRIDGE WASHING 2018	.	15	8	
Default	PLOT SCALE = 101.3092 ' / in.	CHECKED -	REVISED -			MARSHALL, MASON AND TAZEWELL		CONTRACT NO. 68E01		ILLINOIS FED. AID PROJECT	
	PLOT DATE = 2/1/2018	DATE -	REVISED -			SCALE:	SHEET OF SHEETS	STA. TO STA.			



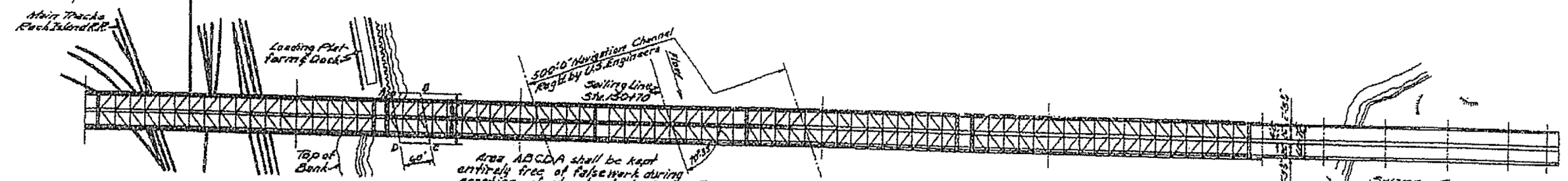
FOR INFORMATION ONLY

LOCATION 5 (I-74 / IL 29) Murray Baker Bridge

180' of truss removed in 2005



GENERAL ELEVATION  
Scale 1" = 120'



GENERAL PLAN  
Scale 1" = 120'

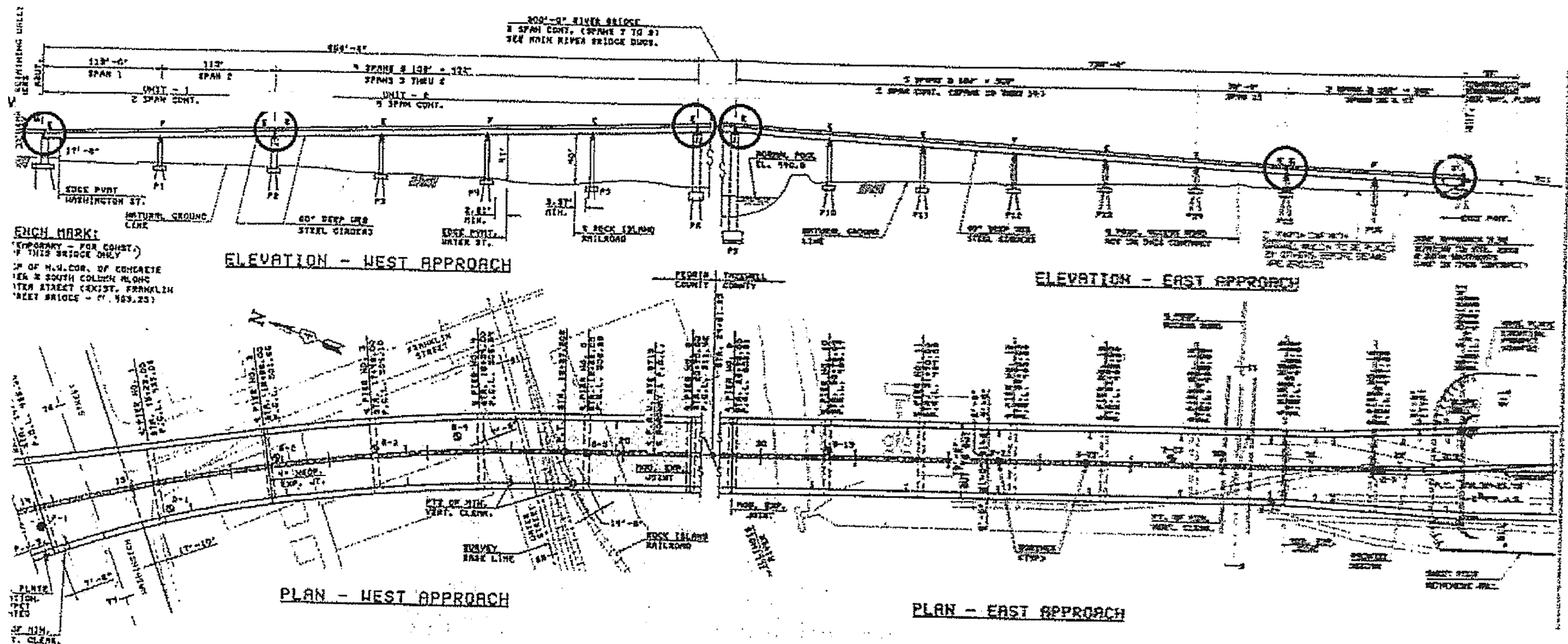
S.N. 090-0001

MARSHALL, MASON AND TAZEWELL

FILE NAME =	USER NAME = inglistj	DESIGNED -	REVISED -	<b>STATE OF ILLINOIS DEPARTMENT OF TRANSPORTATION</b>	<b>PLAN SHEET</b>			F.A. RTE.	SECTION	COUNTY	TOTAL SHEETS	SHEET NO.
S:\GEN\DRAWING\STD&PLNS\Squad15\inglistj\821-Bridge Washing 2013 & others\68E01\68E01-DRAWING\Washing 2018.dgn	DRWN	Washing 2018.dgn	REVISED -					VAR	D4 BRIDGE WASHING 2018	.	15	9
Default	PLOT SCALE = 101.3092' / in.	CHECKED -	REVISED -		SCALE: SHEET OF SHEETS STA. TO STA.			CONTRACT NO. 68E01				
	PLOT DATE = 2/1/2018	DATE -	REVISED -		ILLINOIS FED. AID PROJECT							

# FOR INFORMATION ONLY

## LOCATION 6 (IL 40) Bob Michel Bridge

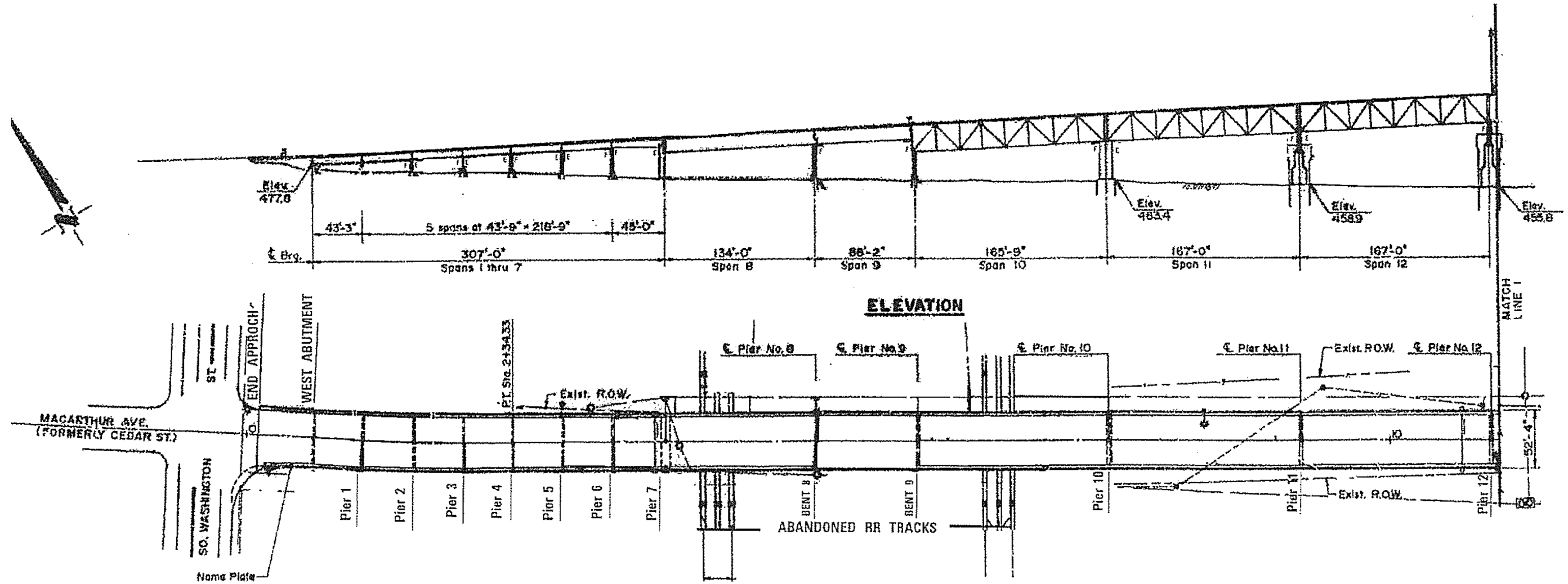


**S.N. 090-0122**

FILE NAME =	USER NAME = inglistj	DESIGNED -	REVISED -	<b>STATE OF ILLINOIS DEPARTMENT OF TRANSPORTATION</b>	<b>PLAN SHEET</b>	F.A. RTE.	SECTION	COUNTY	TOTAL SHEETS	SHEET NO.	
S:\GEN\DRAW\STD\PLNS\Squad15\inglis\B21-Bridge Washing 2013 & others\68E01\68E01	B21-Bridge Washing 2013 & others\68E01\68E01	DRAWN Washing 2018.dgn	REVISED -			VAR	D4 BRIDGE WASHING 2018	.	15	10	
Default	PLOT SCALE = 101.3092 1/16 in.	CHECKED -	REVISED -			MARSHALL, MASON AND TAZEWELL CONTRACT NO. 68E01					
	PLOT DATE = 2/1/2018	DATE -	REVISED -			ILLINOIS FED. AID PROJECT					

# LOCATION 7 (S.N.090-0030) IL 116 /IL 8 OVER ILLINOIS RIVER FOR INFORMATION ONLY

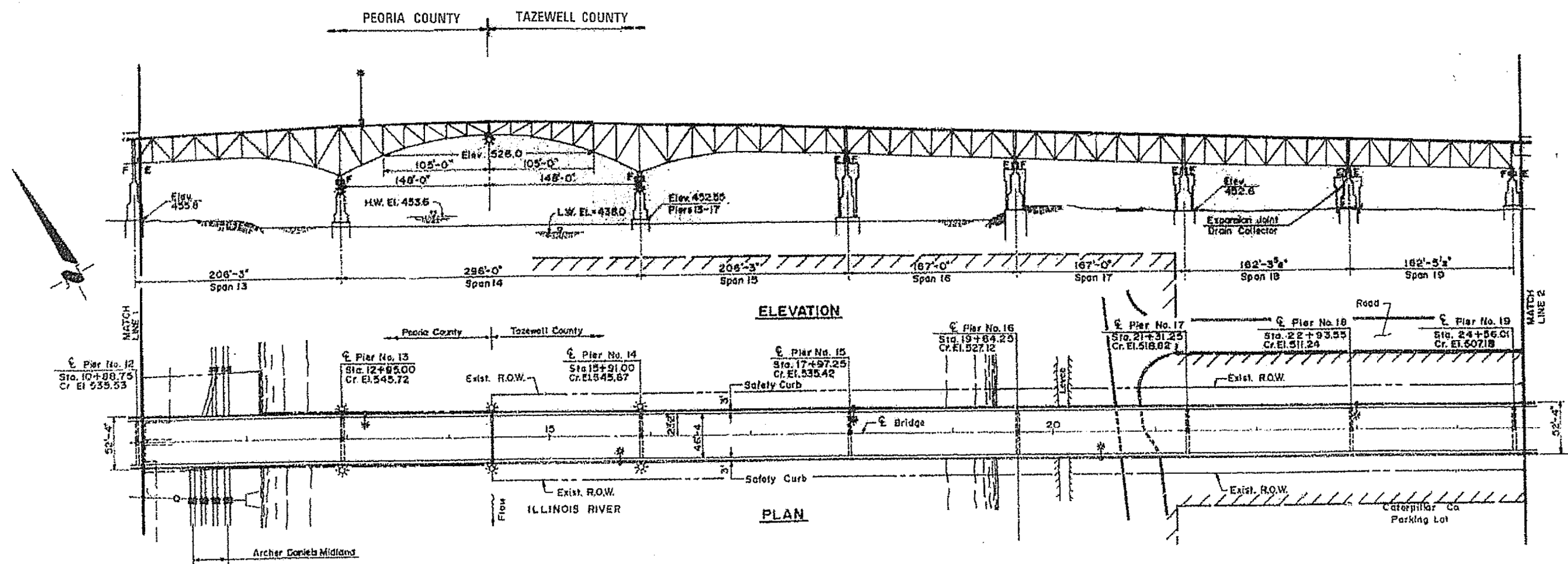
Existing Structure: Structure No. 090-0030. Completed in 1932: Thirty four spans. 7 simple multibeam, 17 simple riveted two plate girder spans, 7 simple deck truss and 3 haunched cantilever truss units. Total length = 3700' back to back abuts. 49'-2" roadway.



## CEDAR STREET BRIDGE SPANS 1-12

FILE NAME =	USER NAME = inglistj	DESIGNED -	REVISED -	<b>STATE OF ILLINOIS DEPARTMENT OF TRANSPORTATION</b>	<b>PLAN SHEET</b>	F.A. RTE.	SECTION	COUNTY	TOTAL SHEETS	SHEET NO.	
S:\GEN\DRIFT\STD\PLNS\Squad5\inglistj\6821-Bridge Washing 2013 & others\68E01\68E01\DRAWING\Washing 2018.dgn		DRAWN -	REVISED -			VAR	D4 BRIDGE WASHING 2018		15	11	
Default		CHECKED -	REVISED -			MARSHALL, MASON AND TAZEWELL		CONTRACT NO. 68E01			
		DATE -	REVISED -			ILLINOIS FED. AID PROJECT					

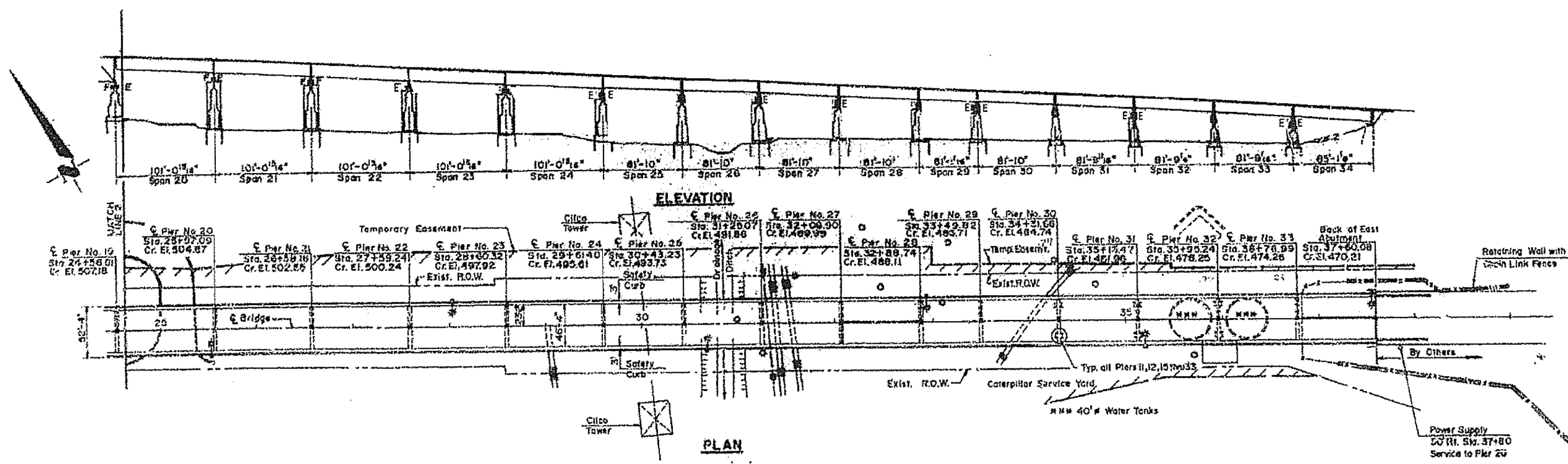
# LOCATION 7 (S.N.090-0030) IL 116 /IL 8 OVER ILLINOIS RIVER FOR INFORMATION ONLY



## CEDAR STREET BRIDGE SPANS 13-19

FILE NAME =	USER NAME = inglistj	DESIGNED -	REVISED -	<b>STATE OF ILLINOIS DEPARTMENT OF TRANSPORTATION</b>	<b>PLAN SHEET</b>	F.A. RTE.	SECTION	COUNTY	TOTAL SHEETS	SHEET NO.		
S:\GEN\DRFT\STD&PLNS\Squad15\inglistj\6821-Bridge Washing 2013 & others\68E01\68E01.dgn	DRWN Washing 2018.dgn					VAR	D4 BRIDGE WASHING 2018	.	15	12		
Default	PLOT SCALE = 101.3092' / in.	CHECKED -	REVISED -			CONTRACT NO. 68E01						
	PLOT DATE = 2/1/2018	DATE -	REVISED -			ILLINOIS FED. AID PROJECT						
						SCALE:	SHEET	OF	SHEETS	STA.	TO	STA.

# LOCATION 7 (S.N.090-0030) IL 116 /IL 8 OVER ILLINOIS RIVER FOR INFORMATION ONLY

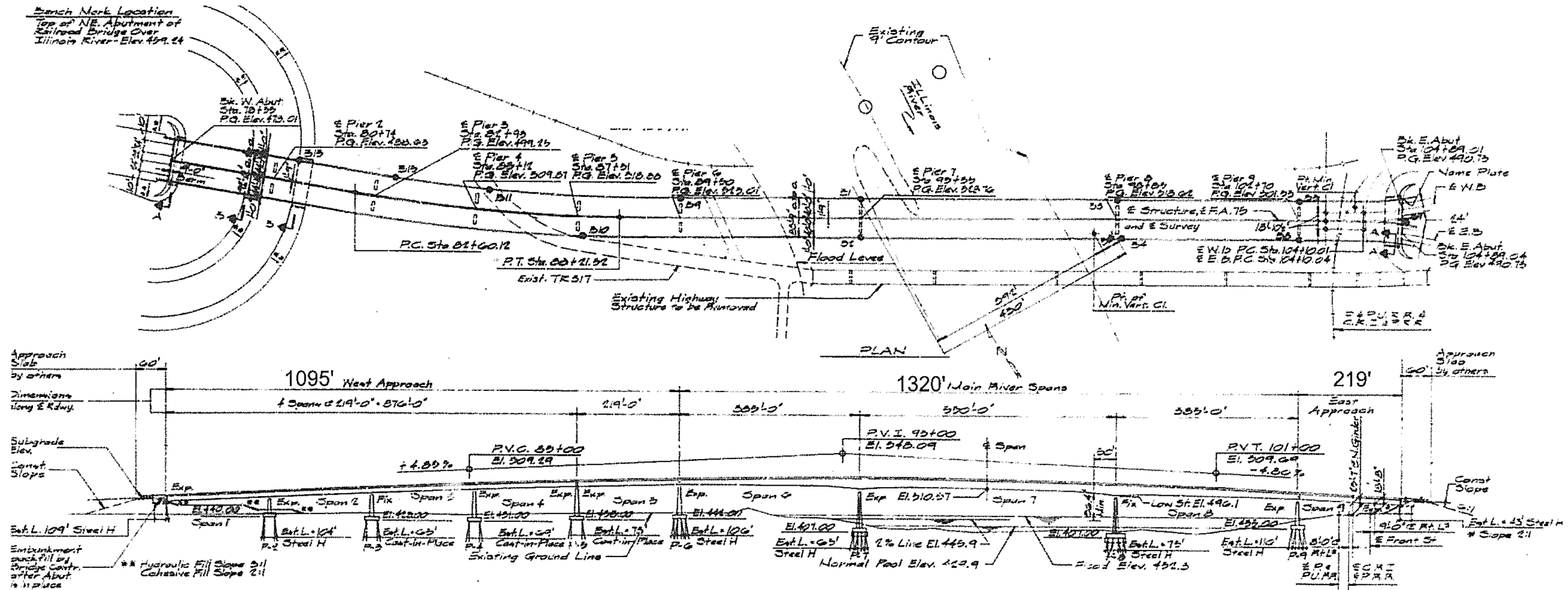


## CEDAR STREET BRIDGE SPANS 20-34

FILE NAME =	USER NAME = inglistj	DESIGNED -	REVISED -	<b>STATE OF ILLINOIS</b>	<b>PLAN SHEET</b>	F.A. RTE.	SECTION	COUNTY	TOTAL SHEETS	SHEET NO.
S:\GEN\DRAWING\STD&PLNS\Squad15 inglistj\6821-Bridge Washing 2013 & others\68E01\68E01.DWG		DRAWN Washing 2018.dgn	REVISED -	<b>DEPARTMENT OF TRANSPORTATION</b>		VAR	D4 BRIDGE WASHING 2018		15	13
Default	PLOT SCALE = 1/8" = 1'-0"	CHECKED -	REVISED -		SCALE: SHEET OF SHEETS STA. TO STA.	MARSHALL, MASON AND TAZEVELL CONTRACT NO. 68E01				
	PLOT DATE = 2/1/2018	DATE -	REVISED -			ILLINOIS FED. AID PROJECT				

# FOR INFORMATION ONLY

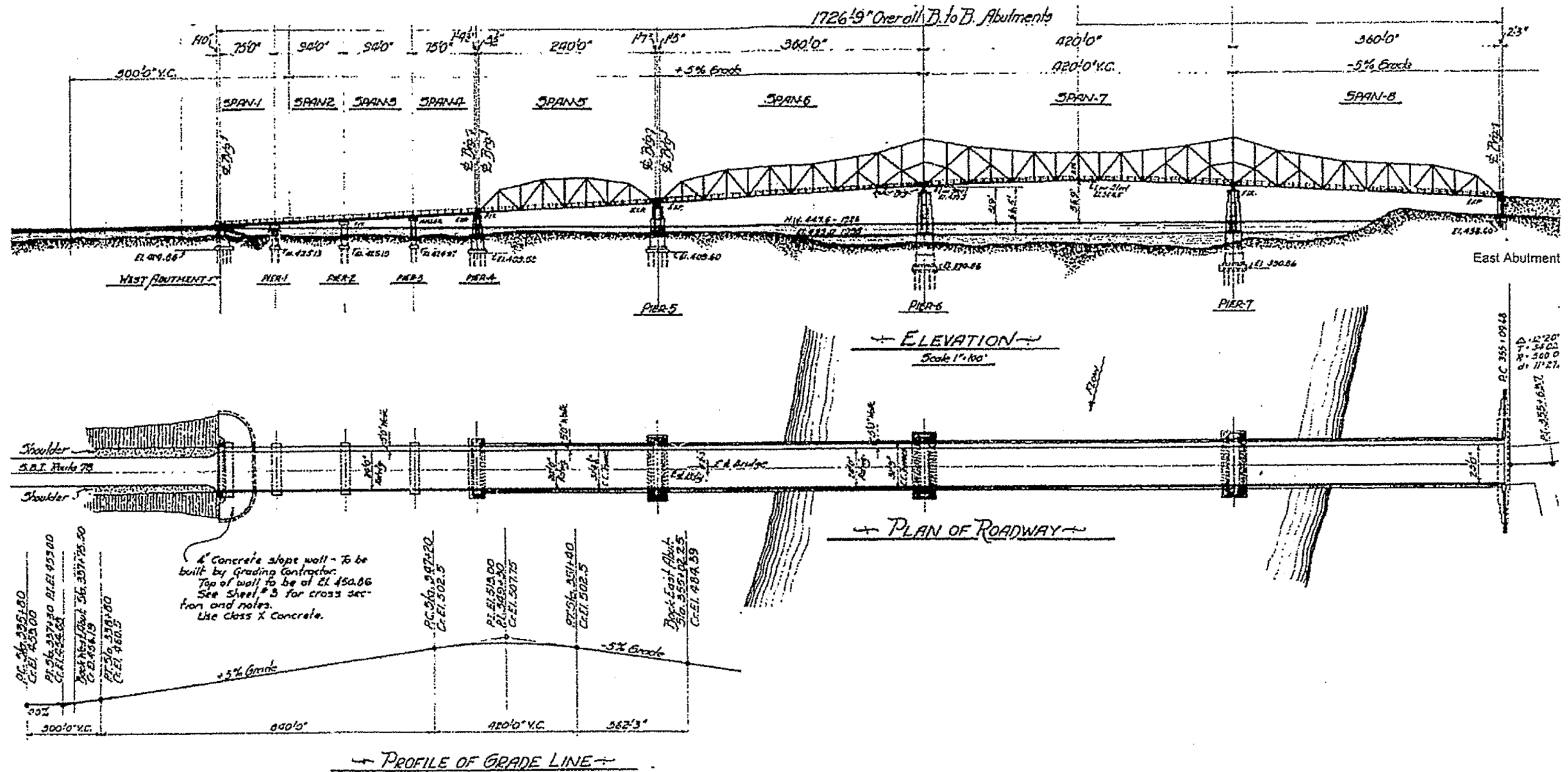
## LOCATION 8 (S.N.090-0114) IL 9 OVER ILLINOIS RIVER



FILE NAME =	USER NAME = inglistj	DESIGNED -	REVISED -	<b>STATE OF ILLINOIS</b> <b>DEPARTMENT OF TRANSPORTATION</b>	<b>PLAN SHEET</b>	F.A. RTE.	SECTION	COUNTY	TOTAL SHEETS	SHEET NO.	
S:\GEN\DRAW\STD\PLNS\Squad15\inglistj\821-Bridge Washing 2013 & others\68E01\68E01.DWG	821-Bridge Washing 2013 & others\68E01\68E01.DWG	DRAWN	REVISED -			VAR	D4 BRIDGE WASHING 2018	.	15	14	
Default	PLOT SCALE = 101.3892 1/ in.	CHECKED -	REVISED -			MARSHALL, MASON AND TAZEWELL CONTRACT NO. 68E01					
	PLOT DATE = 2/1/2018	DATE -	REVISED -			ILLINOIS FED. AID PROJECT					

# FOR INFORMATION ONLY

## LOCATION 9 (S.N.063-0002) IL 136 OVER ILLINOIS RIVER



FILE NAME =	USER NAME = inglistj	DESIGNED -	REVISED -	<b>STATE OF ILLINOIS DEPARTMENT OF TRANSPORTATION</b>	<b>PLAN SHEET</b>	F.A. RTE.	SECTION	COUNTY	TOTAL SHEETS	SHEET NO.	
S:\GEN\DRIFT\STD&PLNS\Squad15 inglistj\6821-Bridge Washing 2013 & others\68E01\68E01.DWG	2021-Bridge Washing 2013 & others\68E01\68E01.DWG	DRAWN	REVISED -			VAR	D4 BRIDGE WASHING 2018	.	15	15	
Default	PLOT SCALE = 1/8"=1'-0"	CHECKED -	REVISED -			MARSHALL, MASON AND TAZEWELL CONTRACT NO. 68E01					
	PLOT DATE = 2/1/2018	DATE -	REVISED -			ILLINOIS FED. AID PROJECT					