

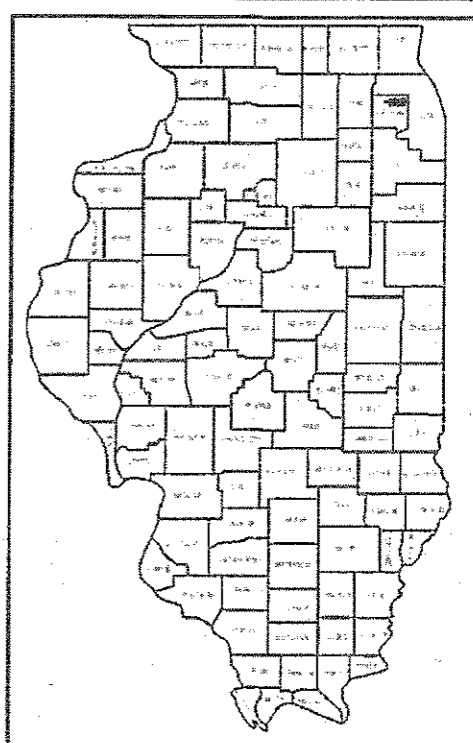
F.A.S. NO.	SECTION	COUNTY	TOTAL SHEETS
3834	17-00104-00-RS	DUPAGE	84
FED. ROAD DIST. NO. 1 ILLINOIS FED. AID PROJECT			CONTRACT NO. 61E42

FOR INDEX OF SHEETS AND INDEX OF HIGHWAY STANDARDS SEE SHEET NO. 2

04-27-2018 LETTING ITEM 150  
 Revised 3/23/18

# STATE OF ILLINOIS DEPARTMENT OF TRANSPORTATION PLANS FOR PROPOSED FEDERAL AID HIGHWAY

FAU RTE 3834 ARMY TRAIL BOULEVARD  
 ROHLWING ROAD TO MILL ROAD  
 WATER MAIN REPLACEMENT AND RESURFACING  
 SECTION 17-00104-00-RS  
 PROJECT NO: BEPP (400)  
 VILLAGE OF ADDISON  
 DUPAGE COUNTY  
 JOB NO. C-91-132-18

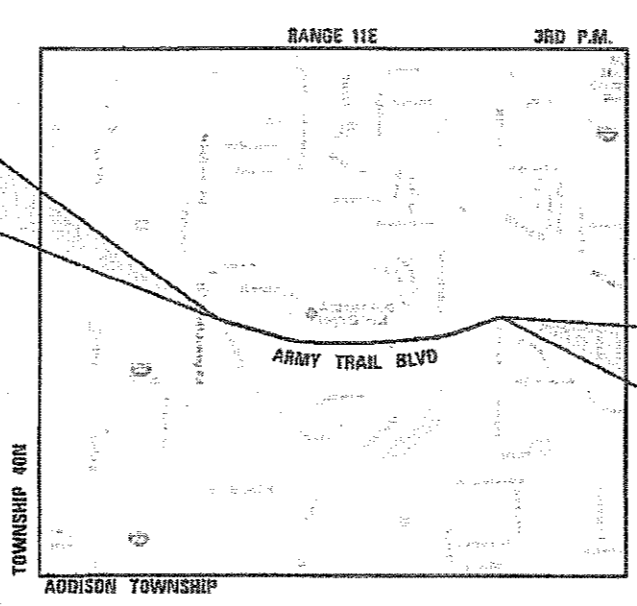


LOCATION OF SECTION INDICATED THUS: →

CONSULTANT ENGINEER: REID T. MAGNER, P.E. CIVILTECH ENGINEERING, INC.  
 PROGRAM AND OFFICE ENGINEER: CHARLES F. RIDDLE, P.E. 847-705-4406 SCHAUMBURG, IL

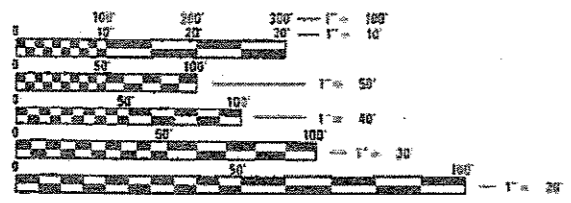
**ARMY TRAIL BOULEVARD**  
 DESIGN DESIGNATION = MINOR ARTERIAL  
 POSTED SPEED = 35 / 40 MPH  
 EXISTING ADT = 16,700 VPD (2016)

PROJECT BEGINS  
 ARMY TRAIL BOULEVARD  
 IMPROVEMENTS  
 STA 105+71.8



PROJECT ENDS  
 ARMY TRAIL BOULEVARD  
 IMPROVEMENTS  
 STA 182+62.0

LOCATION MAP  
 NOT TO SCALE



FULL SIZE PLANS HAVE BEEN PREPARED USING STANDARD ENGINEERING SCALES. REDUCED SIZED PLANS WILL NOT CONFORM TO STANDARD SCALES. IN MAKING MEASUREMENTS ON REDUCED PLANS, THE ABOVE SCALES MAY BE USED.

**J.U.L.I.E.**  
 JOINT UTILITY LOCATION INFORMATION FOR EXCAVATION  
 1.800.892.0123 OR 811

**PROJECT LENGTH:**  
 ARMY TRAIL BOULEVARD LIMITS - STA 105+71.8 TO STA 182+62.0  
 GROSS AND NET LENGTH - 7690.2 FT (1.46 MILES)

STATE OF ILLINOIS  
 DEPARTMENT OF TRANSPORTATION

Approved: *[Signature]*

Prepared: *[Signature]* DECEMBER 21, 2017

Releasing for Bid Based on Limited Review: *[Signature]* DECEMBER 29, 2017

APPLIES TO SHEETS 1 - 57  
 58 - 84

APPLIES TO SHEETS 58 - 62

REGISTERED P.E. STATE OF ILLINOIS EXPIRES 11/30/2018

REGISTERED P.E. STATE OF ILLINOIS EXPIRES 11/30/2018



PLANS PREPARED BY: *[Signature]*

**CIVILTECH**  
 Two Prairie Place, Suite 1400 - Itasca, Illinois 60143  
 Tel: 630 773 3500 Fax: 630 773 3576  
 www.civiltech.com

CONTRACT NO. 61E42

PRINTED BY THE AUTHORITY OF THE STATE OF ILLINOIS

**INDEX OF SHEETS**

1	COVER SHEET
2-3	GENERAL NOTES AND STANDARDS
4-9	SUMMARY OF QUANTITIES
10	TYPICAL SECTIONS
11	SCHEDULE OF EARTHWORK QUANTITIES
12-13	ALIGNMENT, TIES AND BENCHMARKS
14-29	ROADWAY PLANS
30-32	MAINTENANCE OF TRAFFIC PLANS
33-37	DRAINAGE AND UTILITIES
38-48	WATER MAIN PLAN AND PROFILE
49	EROSION CONTROL NOTES
50-57	PAVEMENT MARKING, LANDSCAPING AND EROSION CONTROL PLANS
58-62	CULVERT REPLACEMENT PLANS
63-72	CONSTRUCTION DETAILS
73-84	IDOT DISTRICT ONE STANDARDS

**HIGHWAY STANDARDS**

000001-06	STANDARD SYMBOLS, ABBREVIATIONS AND PATTERNS
280001-07	TEMPORARY EROSION CONTROL SYSTEMS
424001-10	PERPENDICULAR CURB RAMPS FOR SIDEWALKS
424011-03	CORNER PARALLEL CURB RAMPS FOR SIDEWALKS
424016-04	MID-BLOCK CURB RAMPS FOR SIDEWALKS
424021-04	DEPRESSED CORNER FOR SIDEWALKS
442201-03	CLASS C AND D PATCHES
602001-02	CATCH BASIN TYPE A
602011-02	CATCH BASIN TYPE C
602301-04	INLET - TYPE A
602401-04	PRECAST MANHOLE TYPE A 4' DIAMETER
604001-04	FRAME AND LIDS TYPE 1
604036-03	GRATE TYPE 8
604086-03	FRAME AND GRATE TYPE 23
604091-03	FRAME AND GRATE TYPE 24
606001-07	CONCRETE CURB TYPE B AND COMBINATION CONCRETE CURB AND GUTTER
606301-04	PC CONCRETE ISLANDS AND MEDIANS
630001-12	STEEL PLATE BEAM GUARDRAIL
630106-01	LONG-SPAN GUARDRAIL OVER CULVERT
701101-05	OFF-RD OPERATIONS, MULTILANE, 15' TO 24" AWAY FROM PAVEMENT EDGE
701106-02	OFF-RD OPERATION, MULTILANE, MORE THAN 15' AWAY
701427-05	LANE CLOSURE, MULTILANE, INTERMITTENT OR MOVING OPER., FOR SPEEDS <= 40 MPH
701601-09	URBAN LANE CLOSURE, MULTILANE, 1W OR 2W WITH NONTRAVERSABLE MEDIAN
701611-01	URBAN HALF ROAD CLOSURE, MULTILANE, 2W WITH MOUNTABLE MEDIAN
701701-10	URBAN LANE CLOSURE, MULTILANE INTERSECTION
701801-06	SIDEWALK, CORNER OR CROSSWALK CLOSURE
701901-07	TRAFFIC CONTROL DEVICES
780001-05	TYPICAL PAVEMENT MARKINGS

**IDOT DISTRICT ONE STANDARDS**

BD-01	DRIVEWAY DETAILS - DISTANCE BETWEEN ROW AND FACE OF CURB & EDGE OF SHOULDER >= 15'
BD-02	DRIVEWAY DETAILS - DISTANCE BETWEEN ROW AND FACE OF CURB < 15'
BD-08	FRAMES AND LIDS ADJUSTMENT WITH MILLING
BD-22	PAVEMENT PATCHING FOR HMA SURFACED PAVEMENT
BD-24	CURB OR CURB AND GUTTER REMOVAL AND REPLACEMENT
BD-32	BUTT JOINTS AND HMA TAPER
BE-300	LIGHT POLE FOUNDATION
TC-10	TRAFFIC CONTROL AND PROTECTION FOR SIDE ROADS, INTERSECTIONS AND DRIVEWAYS
TC-13	DISTRICT ONE TYPICAL PAVEMENT MARKINGS
TC-16	SHORT TERM PAVEMENT MARKING LETTERS AND SYMBOLS
TC-22	ARTERIAL ROAD INFORMATION SIGN
TC-26	DRIVEWAY ENTRANCE SIGNING

**GENERAL**

- ALL REFERENCES TO "ENGINEER" SHALL BE INTERPRETED TO MEAN THE RESIDENT ENGINEER.
- ALL CONSTRUCTION SHALL BE DONE IN ACCORDANCE WITH THE DETAILS IN THE PLANS, THE SPECIAL PROVISIONS INCLUDED IN THE CONTRACT DOCUMENTS, AND THE LATEST EDITION OF THE FOLLOWING STATE OF ILLINOIS SPECIFICATIONS: "THE STANDARD SPECIFICATIONS FOR ROAD AND BRIDGE CONSTRUCTION" (REFERRED TO AS THE "STANDARD SPECIFICATIONS"), THE "SUPPLEMENTAL SPECIFICATIONS AND RECURRING SPECIAL PROVISIONS", THE "STANDARD SPECIFICATIONS FOR TRAFFIC CONTROL ITEMS", THE "MANUAL ON UNIFORM TRAFFIC CONTROL DEVICES FOR STREETS AND HIGHWAYS", THE "MANUAL OF TEST PROCEDURES FOR MATERIALS" AND THE "STANDARD SPECIFICATIONS FOR WATER AND SEWER MAIN CONSTRUCTION IN ILLINOIS". ANY REFERENCE TO "STANDARDS" THROUGHOUT THE PLANS OR SPECIAL PROVISIONS SHALL BE INTERPRETED AS THE LATEST IDOT STANDARD.
- THE CONTRACTOR SHALL OBTAIN ALL PERMITS PRIOR TO COMMENCEMENT OF WORK.
- THE CONTRACTOR SHALL CONTACT THE ADDISON COMMUNITY DEVELOPMENT DEPARTMENT (630) 693-7530, THE PUBLIC WORKS DEPARTMENT (630) 620-2020, AND THE ENVIRONMENTAL SERVICES DIVISION (630) 279-2140 OF THE VILLAGE OF ADDISON AND NOTIFY THE ENGINEER, UTILITY COMPANIES, CHURCHES, SCHOOL DISTRICTS, AND LOCAL POLICE AND FIRE DEPARTMENTS 72 HOURS PRIOR TO COMMENCEMENT OF WORK.
- NO WORK SHALL COMMENCE UNTIL TRAFFIC CONTROL REQUIREMENTS ARE MET TO THE SATISFACTION OF THE ENGINEER.
- IN ADDITION TO THE REQUIREMENTS OF THE SPECIAL PROVISION FOR CONSTRUCTION LAYOUT STAKES (ILLINOIS DEPARTMENT OF TRANSPORTATION CHECK SHEET #10), THE CONTRACTOR SHALL REESTABLISH, MONUMENT, AND TIE ALL CONTROL POINTS USED TO COMPLETE THE WORK AS SPECIFIED INCLUDING ALL P'S, PC'S, PT'S, AND POT'S. THE TYPE OF MONUMENTATION USED WILL BE PK NAILS, IRON PIPES, RR SPIKES OR AS APPROVED BY THE ENGINEER.
- PROPOSED LINES AND GRADES SHOWN ON THE CONSTRUCTION PLANS REPRESENT FINISHED GRADE ELEVATIONS, UNLESS OTHERWISE NOTED.
- ALL DIMENSIONS, INCLUDING RADII, ARE GIVEN TO THE EDGE OF PAVEMENT UNLESS OTHERWISE NOTED. IT SHALL BE THE CONTRACTOR'S RESPONSIBILITY TO VERIFY ALL DIMENSIONS AND CONDITIONS EXISTING IN THE FIELD PRIOR TO ORDERING MATERIALS AND BEGINNING CONSTRUCTION.
- WHEN REMOVING CURB AND GUTTER, PAVEMENT OR ANY OTHER STRUCTURE, THE CONTRACTOR SHALL TAKE PRECAUTIONS NECESSARY TO AVOID DAMAGE TO UNDERGROUND PUBLIC OR PRIVATE UTILITIES. UNDER NO CIRCUMSTANCES WILL THE USE OF A FROST BALL CONCRETE BREAKER BE ALLOWED.
- CURB AND GUTTER JOINTS SHALL BE PLACED AS PER STANDARD 606001 AND IN ADDITION ONE INCH EXPANSION JOINTS SHALL BE PLACED EVERY 150 FT.
- PROTECTIVE COAT SHALL BE APPLIED IN ALL CASES REGARDLESS OF THE CALENDAR DATE LIMITATIONS CONTAINED IN ARTICLE 420.18. THE PROTECTIVE COATING SHALL BE APPLIED TO THE EXPOSED SURFACES OF THE PORTLAND CEMENT CONCRETE PAVEMENT, CONCRETE SIDEWALK, AND CONCRETE CURB AND GUTTER. PORTLAND CEMENT CONCRETE CURING SHALL BE LIMITED TO METHODS SPECIFIED IN ARTICLE 1020.13 (A) [1], [2] AND [3].
- CONCRETE TRUCK WASHOUT FACILITY SHOULD BE PROVIDED IN ACCORDANCE WITH THE "STANDARD SPECIFICATIONS" AND SPECIAL PROVISIONS IN THE FIELD BY THE CONTRACTOR AT A LOCATION OR LOCATIONS APPROVED BY THE ENGINEER. WASHING CONCRETE AT CURB AND GUTTER IS STRICTLY PROHIBITED.
- THE GENERAL CONTRACTOR IS REQUIRED TO HIRE AN ENVIRONMENTAL FIRM WITH AT LEAST FIVE (5) DOCUMENTED LEAKING UNDERGROUND STORAGE TANK (LUST) CLEANUPS OR THAT IS PRE-QUALIFIED IN HAZARDOUS WASTE BY THE DEPARTMENT TO REMEDIATE THE SOIL CONTAMINATION AND MONITOR FOR WORKER PROTECTION.
- THE CONTRACTOR SHALL REMOVE FROM THE PROJECT SITE ALL UNSUITABLE EXCAVATED MATERIAL. THIS MATERIAL WILL BE CLASSIFIED AS ALL MATERIAL THAT THE ENGINEER DEEMS UNSUITABLE, SUCH AS REBAR, ABANDONED WIRE, ETC. THE WASTE EXCAVATED MATERIAL SHALL NOT BE DEPOSITED ON PUBLIC OR PRIVATE PROPERTY UNLESS THE CONTRACTOR FIRST OBTAINS THE WRITTEN PERMISSION FROM THE PROPERTY OWNER OR THE AUTHORIZED REPRESENTATIVE OF THE APPROPRIATE PUBLIC AGENCY. PROVISIONS OF ARTICLE 202.03 STANDARD SPECIFICATIONS SHALL BE ADHERED TO. THE DISPOSAL AREA LOCATION SHALL BE DISCLOSED TO THE ENGINEER.
- THE THICKNESSES OF HMA MIXTURES SHOWN ON THE PLANS ARE NOMINAL. DEVIATIONS MAY OCCUR DUE TO IRREGULARITIES IN THE EXISTING SURFACE COURSE UPON WHICH THE HMA MATERIALS ARE PLACED.
- THE CONTRACTOR SHALL LIMIT ALL DROP-OFFS BETWEEN LANES TO 2" DURING ALL OVERNIGHT PERIODS.
- TEMPORARY RAMPS SHALL BE CONSTRUCTED PER SECTION 406 OF THE "STANDARD SPECIFICATIONS" AT THE DIRECTIONS OF THE ENGINEER.
- WHEN DIRECTED BY THE ENGINEER, SUPPLEMENTAL WATERING SHALL BE APPLIED TO ALL SEEDED/SODDED AREAS PRIOR TO FINAL ACCEPTANCE AT A RATE SPECIFIED BY THE ENGINEER AND IN ACCORDANCE WITH THE "STANDARD SPECIFICATIONS" AND SPECIAL PROVISIONS.
- THOSE SEEKING THE FULL GEOTECHNICAL REPORT SHOULD CONTACT THE OWNER OF RECORD. CONTACT THE VILLAGE OF ADDISON ENGINEER, KAI LIU, AT 630.693.7535 TO MAKE ARRANGEMENTS FOR ACCESS TO THIS INFORMATION. SEE AVAILABLE REPORTS SPECIAL PROVISION.

**STORM SEWERS, STRUCTURES AND UTILITIES**

- BEFORE STARTING ANY EXCAVATION, THE CONTRACTOR SHALL CALL "JULIE" AT 1-800-892-0123 FOR FIELD LOCATIONS OF BURIED UTILITIES (48 HOURS NOTIFICATION IS REQUIRED).
- THE CONTRACTOR SHALL COORDINATE CONSTRUCTION ACTIVITIES WITH UTILITY COMPANIES.
- THE LOCATION OF PUBLIC OR PRIVATE UTILITIES SHOWN ON THE PLANS ARE APPROXIMATE AND THE ENGINEER DOES NOT GUARANTEE THEIR ACCURACY. THE CONTRACTOR WILL BE REQUIRED TO ASCERTAIN THE EXACT LOCATION OF SUCH UTILITIES AND EXERCISE CARE DURING HIS CONSTRUCTION OPERATIONS SO AS NOT TO DAMAGE THEM IN ACCORDANCE WITH THE SPECIAL PROVISIONS AND APPLICABLE ARTICLES INCLUDED IN THE "STANDARD SPECIFICATIONS" INCLUDING, BUT NOT LIMITED TO, ARTICLES 105.07 AND 107.39. THE CONTRACTOR SHALL BE RESPONSIBLE FOR CONTACTING THE OWNERS OF ALL EXISTING UTILITIES SO THAT THEIR FACILITIES MAY BE LOCATED AND ADJUSTED OR MOVED, IF NECESSARY, PRIOR TO THE START OF THE CONSTRUCTION OPERATIONS.
- THE CONTRACTOR SHALL BE RESPONSIBLE FOR CONTACTING LOCAL AGENCIES MAINTAINING STORM & SANITARY SEWERS AND WATER MAINS TO VERIFY THE MATERIALS AND METHODS ALLOWED FOR THE ADJUSTMENT OR RELOCATION OF THEIR FACILITIES, IF NECESSARY.
- FRAME ELEVATIONS GIVEN ON THE PLANS ARE ONLY TO ASSIST THE CONTRACTOR IN DETERMINING THE APPROXIMATE OVERALL HEIGHT OF THE STRUCTURE.
- WHEN EXISTING DRAINAGE FACILITIES ARE DISTURBED, THE CONTRACTOR SHALL PROVIDE AND MAINTAIN TEMPORARY OUTLETS AND CONNECTIONS FOR ALL PRIVATE OR PUBLIC DRAINS, SEWERS OR STRUCTURES. HE SHALL PROVIDE FACILITIES TO TAKE IN ALL STORM WATER WHICH WILL BE RECEIVED BY THESE DRAINS AND SEWERS, AND DISCHARGE THE SAME. HE SHALL PROVIDE AND MAINTAIN AN EFFICIENT PUMPING PLANT, IF NECESSARY, AND A TEMPORARY OUTLET. HE SHALL BE PREPARED AT ALL TIMES TO DISPOSE OF THE WATER RECEIVED FROM TEMPORARY CONNECTIONS UNTIL SUCH TIME AS THE PERMANENT CONNECTIONS WITH SEWERS ARE BUILT AND IN SERVICE.
- HMA OR CONCRETE PAVEMENT CROSSINGS REMOVED DUE TO STORM SEWER, WATER MAIN, OR CULVERT WORK SHALL NOT BE LEFT IN GRAVEL OVERNIGHT. THIS INCLUDES THE MAIN ROADS, SIDE STREETS, PRIVATE ENTRANCES, COMMERCIAL ENTRANCES AND PARKING AREAS. TEMPORARY HMA PAVEMENT MAY BE USED IN LIEU OF IMMEDIATE PAVEMENT PLACEMENT. PAVEMENT REMOVED AS PART OF UTILITY INSTALLATIONS SHALL NOT BE LEFT UNPROTECTED, AND SHALL BE COVERED WITH PLATING AT THE DIRECTION OF THE ENGINEER OR REPLACED WITH PERMANENT PAVEMENT.
- ALL IMPACTED SERVICES TO BE REPLACED WITH NEW BOX-CURB STOP, CORP & COPPER.
- THE FIRST TWO JOINTS ON THE WATERMAIN BEYOND ANY VALVE, BEND, CROSS OR TEE SHALL BE RESTRAINED WITH:  
-LOK-RING JOINTS BY AMERICAN CAST IRON PIPE  
-TR-FLEX JOINTS BY U.S. PIPE  
-FIELDLOK JOINTS BY MUELLER COMPANY, OR  
-MEGA LUGS BY EBAA IRON.  
ALL WATER MAIN & MATERIALS SHALL BE MADE IN THE UNITED STATES OF AMERICA.
- ALL MATERIAL PLACED IN TRENCHES SHALL BE MECHANICALLY COMPACTED IN MAXIMUM ONE FOOT LIFTS. JETTING OF TRENCHES WILL NOT BE PERMITTED.
- ALL VALVE VAULTS SHALL HAVE LOCKING TEES.
- THE CONTRACTOR SHALL CONFIRM ALL EXISTING STORM SEWER PIPE SIZES AND INVERTS PRIOR TO ORDERING STRUCTURES. ANY MODIFICATION OF STRUCTURES DUE TO THE FAILURE OF THE CONTRACTOR TO PERFORM THIS TASK SHALL BE AT THE CONTRACTOR'S EXPENSE AND MAY LEAD TO THE REJECTION OF THE STRUCTURE IN THE FIELD.
- ONLY PRECAST CONCRETE ADJUSTMENT RINGS, MAXIMUM OF 12" IN HEIGHT, WILL BE ALLOWED IN THE ADJUSTMENT OR RECONSTRUCTION OF CATCH BASIN, MANHOLE, INLET AND VALVE VAULT STRUCTURES, UNLESS INDICATED OTHERWISE ON THE PLANS OR AS DIRECTED BY THE ENGINEER. COMMON BRICK WILL NOT BE ALLOWED. ALL TYPE 8 GRATES ON RESTRICTED DEPTH DRAINAGE STRUCTURES SHALL BE ADJUSTED TO PLAN GRADE WITH 4" MINIMUM CONCRETE ADJUSTMENT RINGS.
- ALL STRUCTURES DESIGNATED TO BE ADJUSTED, SPECIAL ADJUSTED OR RECONSTRUCTED SHALL HAVE NEW FRAMES, LIDS AND GRATES PROVIDED.

DATE	
BY	
SURVEYED	
PLOTTED	
REVISIONS	
NOTED	
BY	
DATE	
NO.	
DATE	
BY	
NO.	

DATE	
BY	
SURVEYED	
PLOTTED	
REVISIONS	
NOTED	
BY	
DATE	
NO.	
DATE	
BY	
NO.	

PLAN	DATE
SURVEYED	BY
DESIGNED	BY
DRAWN	BY
CHECKED	BY
DATE	
NOTE BOOK	
NO.	

PROFILE	DATE
SURVEYED	BY
DESIGNED	BY
DRAWN	BY
CHECKED	BY
DATE	
NOTE BOOK	
NO.	

CODE NUMBER	ITEM	UNIT	TOTAL QUANTITY	0005 ROADWAY	NON-PARTICIPATING
20100210	TREE REMOVAL (OVER 15 UNITS DIAMETER)	UNIT	34	34	
20101000	TEMPORARY FENCE	FOOT	8,072	8,072	
20101100	TREE TRUNK PROTECTION	EACH	15	15	
20101200	TREE ROOT PRUNING	EACH	61	61	
20101300	TREE PRUNING (1 TO 10 INCH DIAMETER)	EACH	27	27	
20101350	TREE PRUNING (OVER 10 INCH DIAMETER)	EACH	34	34	
20200100	EARTH EXCAVATION	CU YD	167	167	
20201200	REMOVAL AND DISPOSAL OF UNSUITABLE MATERIAL	CU YD	863	863	
20400800	FURNISHED EXCAVATION	CU YD	830	830	
20700220	POROUS GRANULAR EMBANKMENT	CU YD	80	80	
20800150	TRENCH BACKFILL	CU YD	4,458	56	4,402
21001000	GEOTECHNICAL FABRIC FOR GROUND STABILIZATION	SQ YD	1,634	1,634	
21101625	TOPSOIL FURNISH AND PLACE, 6"	SQ YD	5,307	5,307	
25000312	SEEDING, CLASS 4A	ACRE	0.5	0.5	
25000400	NITROGEN FERTILIZER NUTRIENT	POUND	66	66	
25000600	POTASSIUM FERTILIZER NUTRIENT	POUND	66	66	
25200110	SODDING, SALT TOLERANT	SQ YD	5,307	5,307	
25200200	SUPPLEMENTAL WATERING	UNIT	11	11	
28000250	TEMPORARY EROSION CONTROL SEEDING	POUND	110	110	
28000400	PERIMETER EROSION BARRIER	FOOT	824	824	
28000500	INLET AND PIPE PROTECTION	EACH	4	4	
28000510	INLET FILTERS	EACH	109	109	
28001100	TEMPORARY EROSION CONTROL BLANKET	SQ YD	5,307	5,307	
30300112	AGGREGATE SUBGRADE IMPROVEMENT 12"	SQ YD	948	948	
35101582	AGGREGATE BASE COURSE, TYPE B 2"	SQ YD	168	168	
35101598	AGGREGATE BASE COURSE, TYPE B 3"	SQ YD	2,235	2,235	
35101600	AGGREGATE BASE COURSE, TYPE B 4"	SQ YD	200	200	
35101900	AGGREGATE BASE COURSE, TYPE B 7"	SQ YD	377	377	
40600290	BITUMINOUS MATERIALS (TACK COAT)	POUND	30,810	30,810	
40600400	MIXTURE FOR CRACKS, JOINTS, AND FLANGEWAYS	TON	5	5	
40600982	HOT-MIX ASPHALT SURFACE REMOVAL - BUTT JOINT	SQ YD	357	357	

^ DENOTES SPECIALTY ITEM  
 ^^ DENOTES CONSTRUCTION TYPE CODE 0042  
 \* DENOTES SPECIAL PROVISION

**CIVILTECH**  
 Two Pierce Place, Suite 1400  
 Itasca, Illinois 60143  
 Tel: 630.773.3900 Fax: 630.773.3975  
 www.civiltechinc.com

DESIGNED - JRR	REVISED - 3/23/18
DRAWN - TGB	REVISED -
CHECKED - RTM	REVISED -
DATE - 12/07/2017	REVISED -

**STATE OF ILLINOIS**  
**DEPARTMENT OF TRANSPORTATION**

**SUMMARY OF QUANTITIES**

SHEET NO. 1 OF 6 SHEETS

F.A.U. RTE.	SECTION	COUNTY	TOTAL SHEETS	SHEET NO.
3834	17-00104-00-RS	DUPAGE	84	4
CONTRACT NO. 61E42				
FED. ROAD DIST. NO. 1 ILLINOIS FED. AID PROJECT				



PLAN	SURVEYED	DATE
	ALIGNED	BY
	CHECKED	
	BY	
	NO. OF WAYS CHECKED	
	DATE	
	NO.	

PROFILE	DESIGNED	DATE
	PLOTTED	BY
	CHECKED	
	BY	
	NO. OF WAYS CHECKED	
	DATE	
	NO.	

CODE NUMBER	ITEM	UNIT	TOTAL QUANTITY	0005 ROADWAY	NON-PARTICIPATING
* XX006521	CONCRETE TRUCK WASHOUT	LSUM	1	1	
* XX007531	RELOCATE EXISTING LIGHT POLE ONTO NEW FOUNDATION	EACH	1	1	
* Z0004510	HOT-MIX ASPHALT DRIVEWAY PAVEMENT, 3'	SQ YD	404	404	
Z0013797	STABILIZED CONSTRUCTION ENTRANCE	SQ YD	78	78	
* Z0013798	CONSTRUCTION LAYOUT	LSUM	1	1	
* Z0017400	DRAINAGE & UTILITY STRUCTURES TO BE ADJUSTED	EACH	107	107	
* Z0017700	DRAINAGE & UTILITY STRUCTURES TO BE RECONSTRUCTED	EACH	10	10	
* Z0019598	DUST CONTROL, SPECIAL	GALLON	500	500	
* Z0030650	TEMPORARY INFORMATION SIGNING	SQ FT	239	239	
* Z0033700	LONGITUDINAL JOINT SEALANT	FOOT	32,591	32,591	
* Z0056604	STORM SEWER (WATER MAIN REQUIREMENTS) 8 INCH	FOOT	17		17
* Z0056606	STORM SEWER (WATER MAIN REQUIREMENTS) 10 INCH	FOOT	339		339
* Z0056608	STORM SEWER (WATER MAIN REQUIREMENTS) 12 INCH	FOOT	88		88
* Z0056610	STORM SEWER (WATER MAIN REQUIREMENTS) 15 INCH	FOOT	72		72
* Z0056614	STORM SEWER (WATER MAIN REQUIREMENTS) 21 INCH	FOOT	21		21
* Z0056618	STORM SEWER (WATER MAIN REQUIREMENTS) 27 INCH	FOOT	21		21
* Z0062456	TEMPORARY PAVEMENT	SQ YD	801		801
^^* Z0076600	TRAINEES	HOUR	500	500	
^^* Z0076604	TRAINEES TRAINING PROGRAM GRADUATE	HOUR	500	500	

^ DENOTES SPECIALTY ITEM  
 ^^ DENOTES CONSTRUCTION TYPE CODE 0042  
 \* DENOTES SPECIAL PROVISION



DESIGNED - JRR	REVISED - 3/23/18
DRAWN - TGB	REVISED -
CHECKED - RTM	REVISED -
DATE - 12/07/2017	REVISED -

STATE OF ILLINOIS  
DEPARTMENT OF TRANSPORTATION

SUMMARY OF QUANTITIES

SHEET NO. 6 OF 6 SHEETS

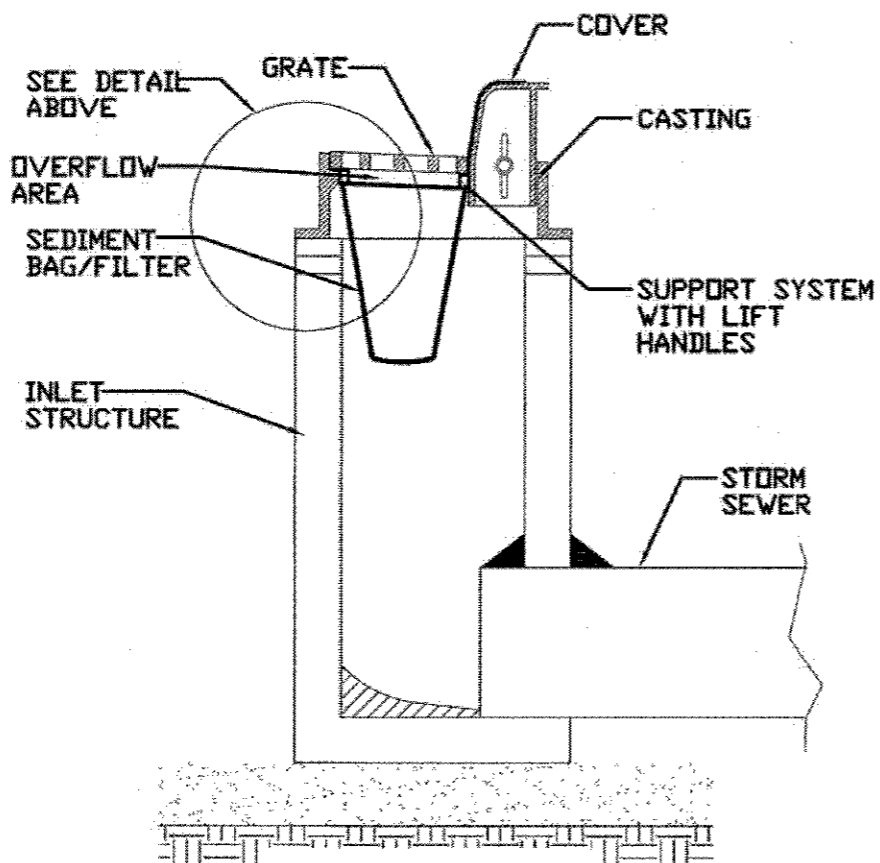
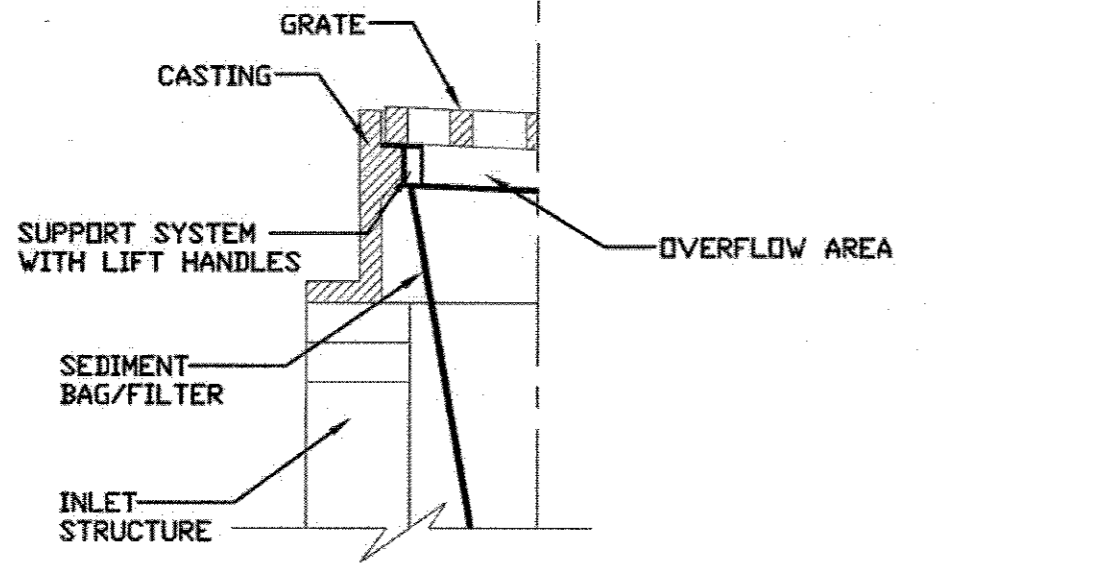
F.A.U. RTE.	SECTION	COUNTY	TOTAL SHEETS	SHEET NO.
3834	17-00104-00-RS	DUPAGE	84	9
CONTRACT NO. 61E42				
FED. ROAD DIST. NO. 1 ILLINOIS FED. AID PROJECT				







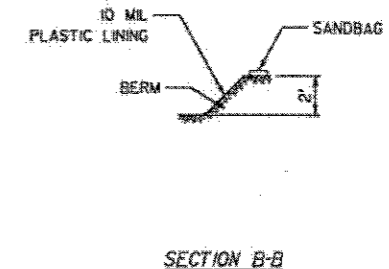
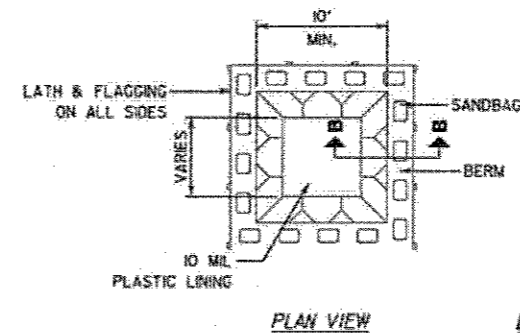
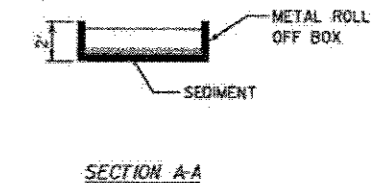
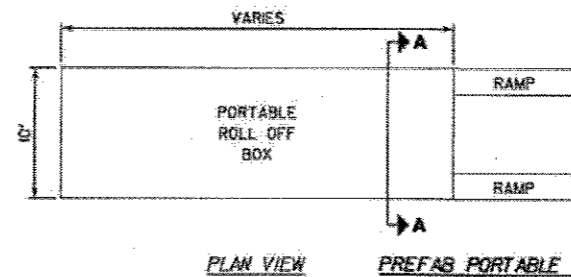
# INLET PROTECTION - PAVED AREAS DROP-IN PROTECTION



REFERENCE	Project _____	Date _____
	Designed _____	Date _____
	Checked _____	Date _____
	Approved _____	Date _____



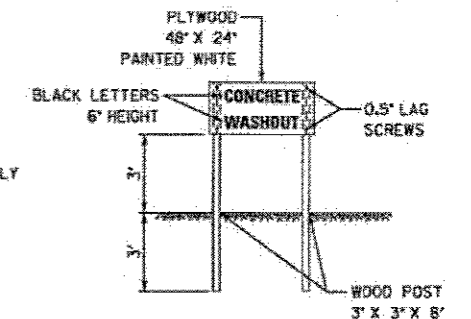
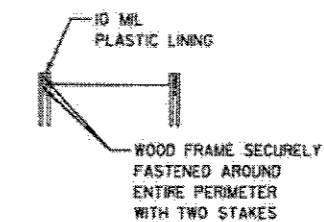
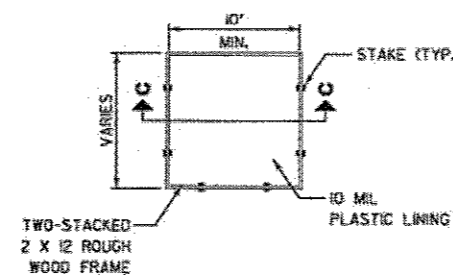
STANDARD DWG. NO.  
**IUM-561D**  
SHEET 1 OF 1  
DATE 01-11-11



**NOTES:**

1. ACTUAL LAYOUT DETERMINED IN FIELD.
2. OTHER WASHOUT DESIGNS MAY BE USED IF APPROVED BY THE ENGINEER.
3. THE CONCRETE WASHOUT SIGN SHALL BE INSTALLED WITHIN 30 FEET OF THE TEMPORARY CONCRETE WASHOUT FACILITY.

NOT TO SCALE

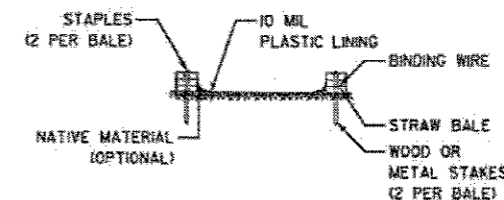
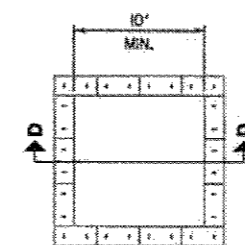


PLAN VIEW

ABOVE GRADE

SECTION C-C

CONCRETE WASHOUT SIGN DETAIL (OR EQUIVALENT)



PLAN VIEW

ABOVE GRADE WITH STRAW BALES

SECTION D-D

STAPLE DETAIL

**NOTES:**

1. ACTUAL LAYOUT DETERMINED IN FIELD.
2. OTHER WASHOUT DESIGNS MAY BE USED IF APPROVED BY THE ENGINEER.
3. THE CONCRETE WASHOUT SIGN SHALL BE INSTALLED WITHIN 30 FEET OF THE TEMPORARY CONCRETE WASHOUT FACILITY.

NOT TO SCALE

## CONCRETE WASHOUT FACILITIES

DESIGNED - JRR	REVISED - 3/23/18
DRAWN - TGB	REVISED -
CHECKED - RTM	REVISED -
DATE - 12/07/2017	REVISED -

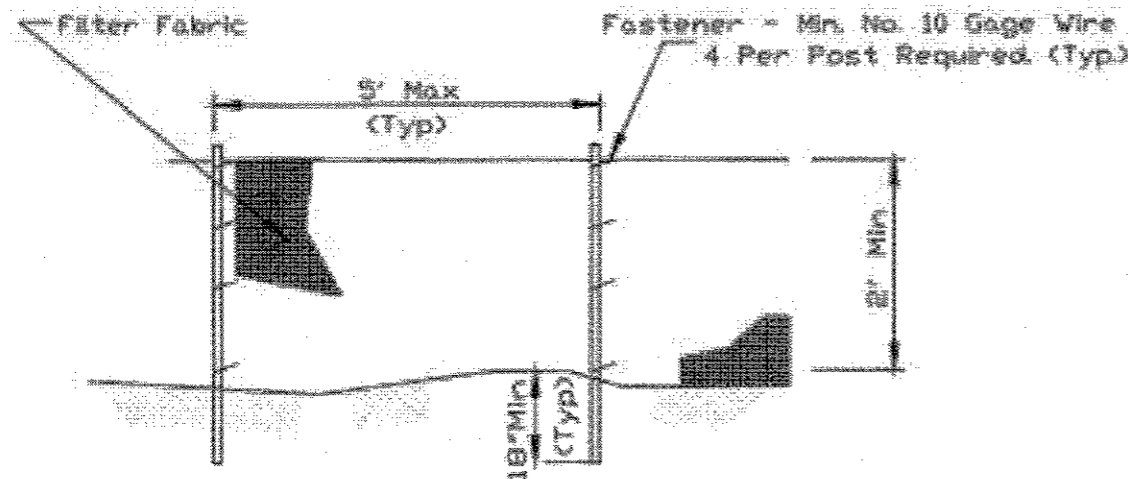
F.A.U. RTE.	SECTION	COUNTY	TOTAL SHEETS	SHEET NO.
3834	17-00104-00-RS	DUPAGE	84	66
CONTRACT NO. 61E42				
FED. ROAD DIST. NO. 1 ILLINOIS FED. AID PROJECT				



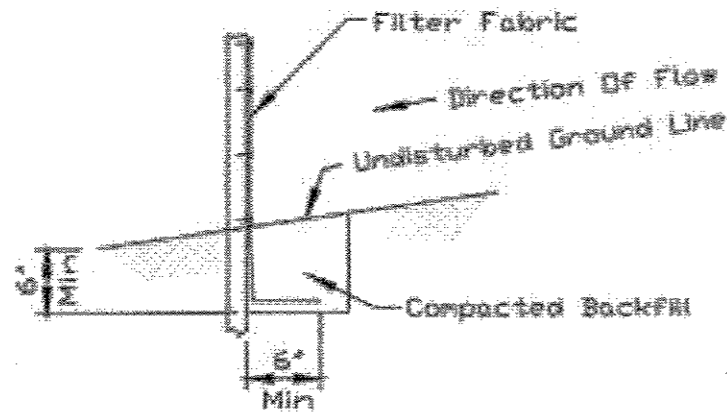
DATE	
BY	
REVISION	
PLANNED	
DESIGNED	
CHECKED	
APPROVED	
NOTE BOOK NO.	
DATE	

DATE	
BY	
REVISION	
PLANNED	
DESIGNED	
CHECKED	
APPROVED	
NOTE BOOK NO.	
DATE	

### SILT FENCE PLAN



ELEVATION



FABRIC ANCHOR DETAIL

**NOTES:**

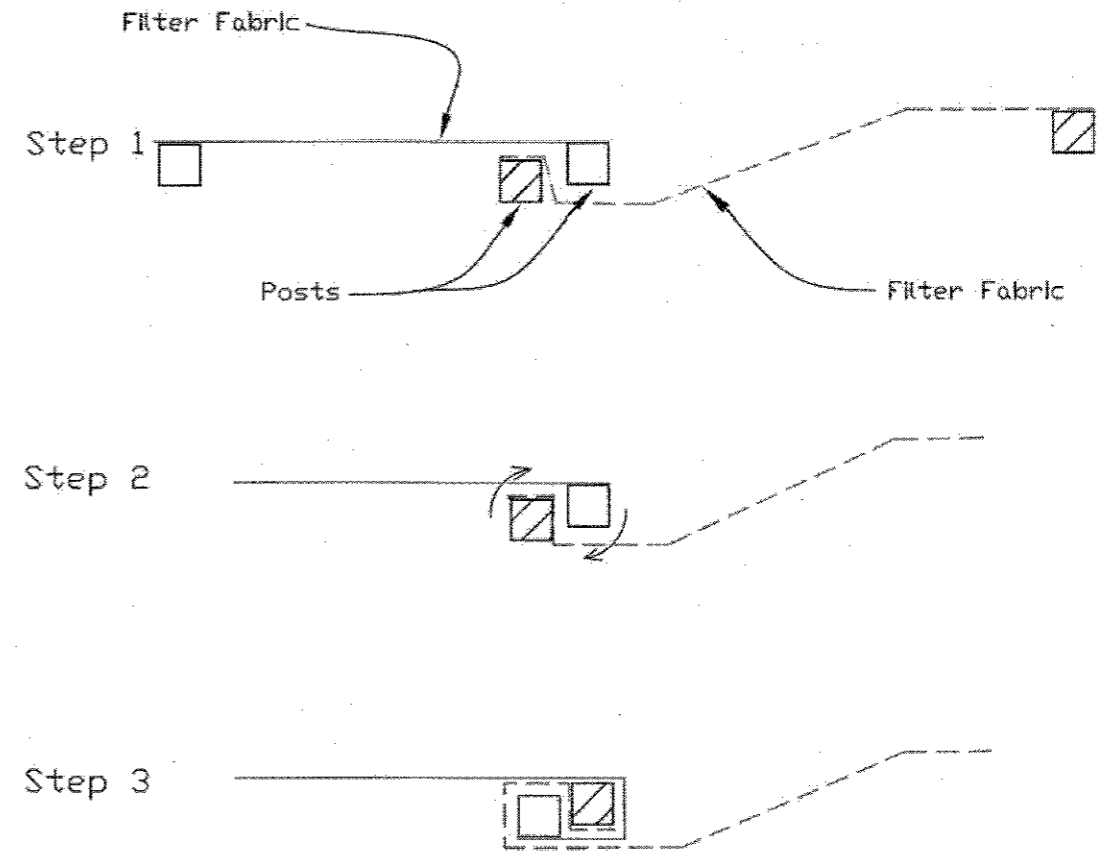
1. Temporary sediment fence shall be installed prior to any grading work in the area to be protected. They shall be maintained throughout the construction period and removed in conjunction with the final grading and site stabilization.
2. Filter fabric shall meet the requirements of material specification 592 Geotextile based upon performance needed.
3. Fence posts shall be either standard steel post or wood post with a minimum cross-sectional area of 2" x 2" nominal size.

REFERENCE	
Project	
Designed	Date
Checked	Date
Approved	Date



STANDARD DWG. NO.  
**IUM-620**  
SHEET 1 OF 8  
DATE 3-16-12

### SILT FENCE - SPLICING TWO FENCES



ATTACHING TWO SILT FENCES

1. Place the end post of the second fence inside the end post of the first fence.
2. Rotate both posts at least 180 degrees in a clockwise direction to create a tight seal with the fabric material.
3. Cut the fabric near the bottom of the stakes to accommodate the 6' flap.
4. Drive both posts a minimum of 18 inches into the ground and bury the flap.
5. Compact backfill (particularly at splices) completely to prevent stormwater piping.

REFERENCE	
Project	
Designed	Date
Checked	Date
Approved	Date

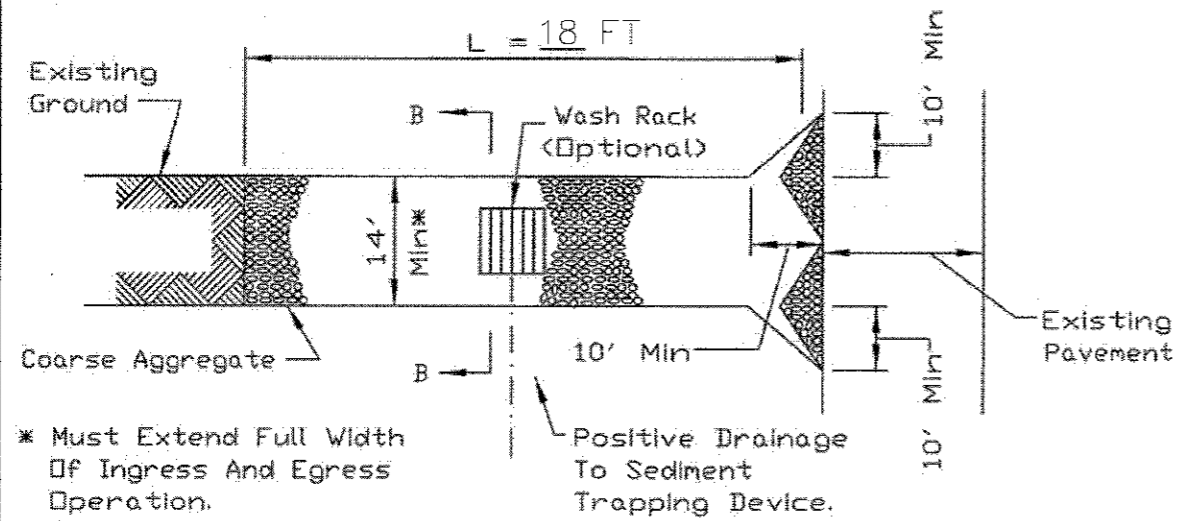


STANDARD DWG. NO.  
**IUM-620B(W)**  
SHEET 1 OF 1  
DATE 3-16-2012

DATE	
BY	
SURVEYED	
DESIGNED	
CHECKED	
APPROVED	
NOTE BOOK	
NO.	

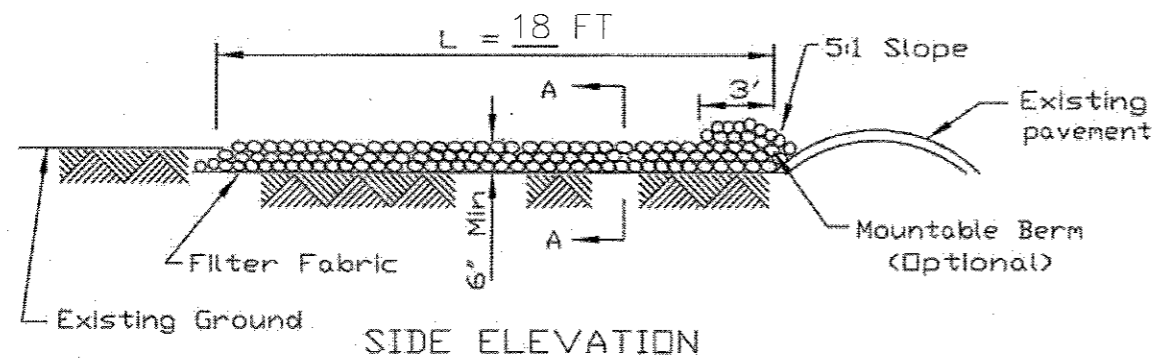
DATE	
BY	
PROFILE	
DESIGNED	
CHECKED	
APPROVED	
NOTE BOOK	
NO.	

### STABILIZED CONSTRUCTION ENTRANCE PLAN



\* Must Extend Full Width Of Ingress And Egress Operation.

PLAN VIEW



SIDE ELEVATION

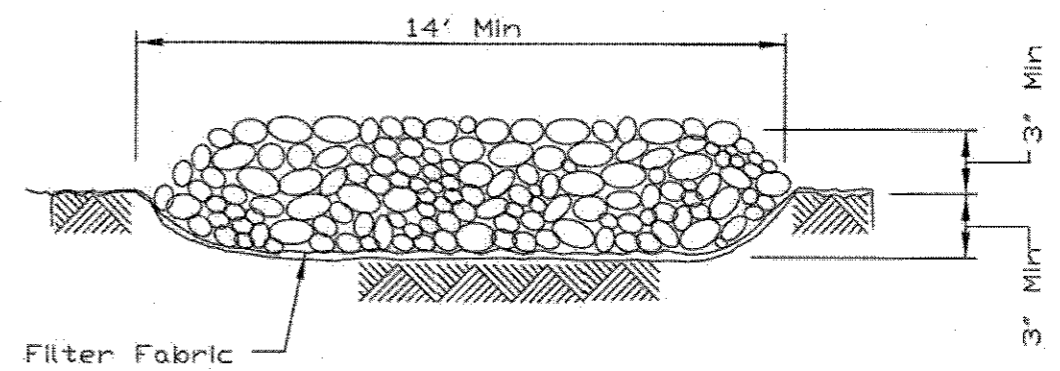
- NOTES:
1. Filter fabric shall meet the requirements of material specification 592 GEOTEXTILE, Table I or 2, Class I, II or IV and shall be placed over the cleared area prior to the placing of rock.
  2. Rock or reclaimed concrete shall meet one of the following IDOT coarse aggregate gradation, CA-1, CA-2, CA-3 or CA-4 and be placed according to construction specification 25 ROCKFILL using placement Method 1 and Class III compaction.
  3. Any drainage facilities required because of washing shall be constructed according to manufacturers specifications.
  4. If wash racks are used they shall be installed according to the manufacturer's specifications.

REFERENCE	
Project	_____
Designed	_____ Date _____
Checked	_____ Date _____
Approved	_____ Date _____

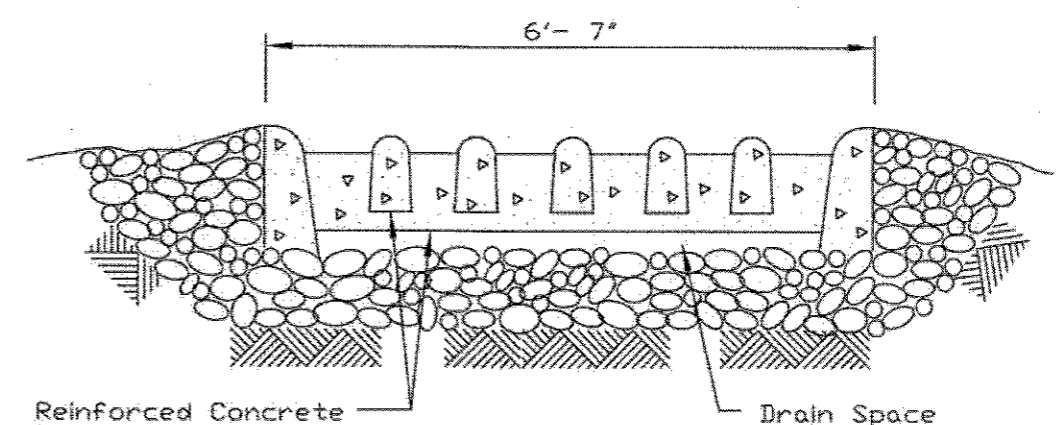


STANDARD DWG. NO.	IL-630
SHEET	1 OF 2
DATE	8-18-94

### STABILIZED CONSTRUCTION ENTRANCE PLAN



SECTION A-A



SECTION B-B

REFERENCE	
Project	_____
Designed	_____ Date _____
Checked	_____ Date _____
Approved	_____ Date _____



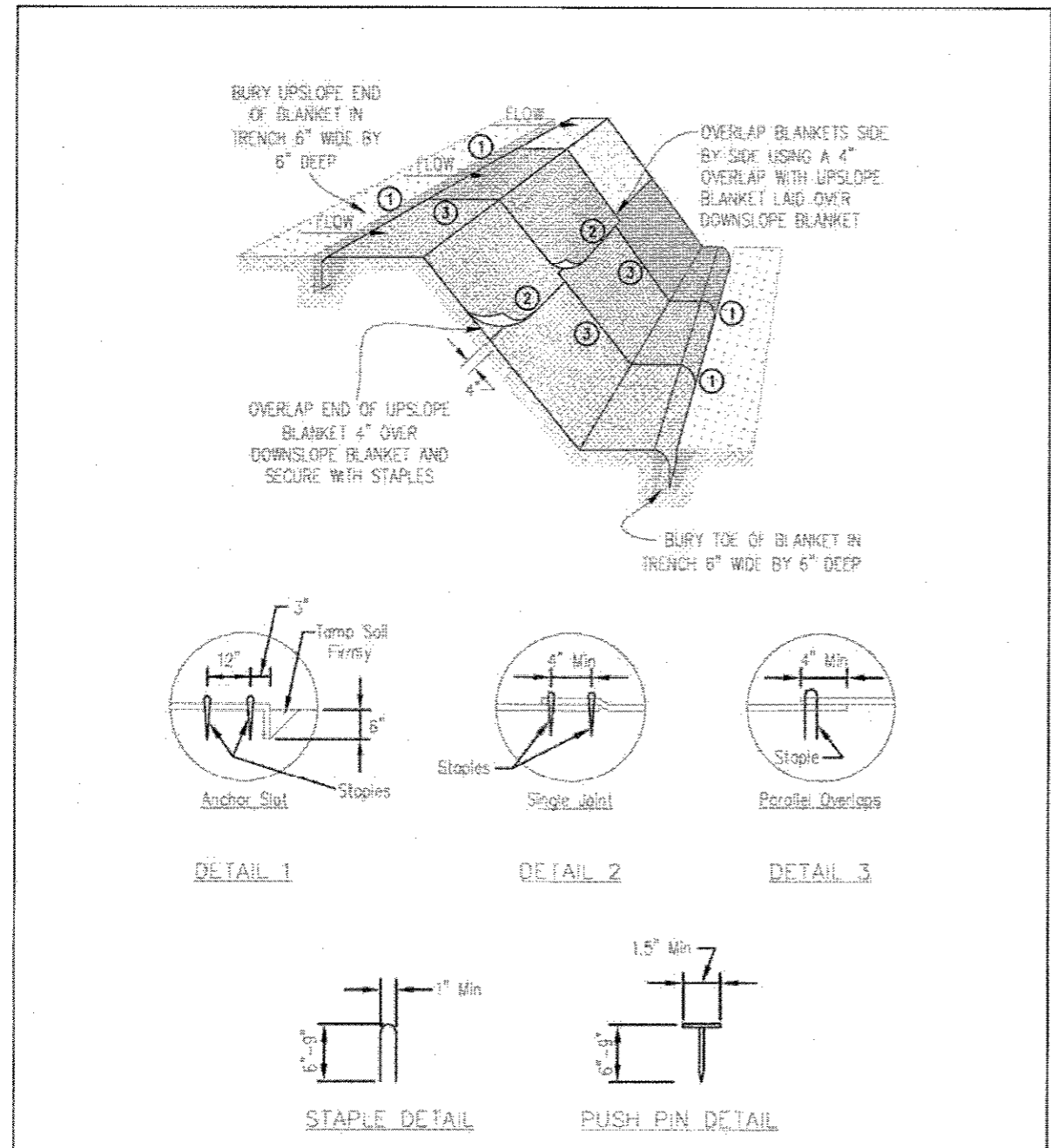
STANDARD DWG. NO.	IL-630
SHEET	2 OF 2
DATE	8-18-94

DESIGNED	- JRR	REVISED	- 3/23/18
DRAWN	- TGB	REVISED	-
CHECKED	- RTM	REVISED	-
DATE	- 12/07/2017	REVISED	-

F.A.U. RTE.	SECTION	COUNTY	TOTAL SHEETS	SHEET NO.
3834	17-00104-00-RS		84	72B
FED. ROAD DIST. NO. 1 ILLINOIS FED. AID PROJECT			CONTRACT NO. 61E42	

DATE	
BY	
REVISIONS	
NO.	
DESCRIPTION	
DATE	
BY	
NO.	
DESCRIPTION	
DATE	
BY	
NO.	
DESCRIPTION	

DATE	
BY	
REVISIONS	
NO.	
DESCRIPTION	
DATE	
BY	
NO.	
DESCRIPTION	
DATE	
BY	
NO.	
DESCRIPTION	

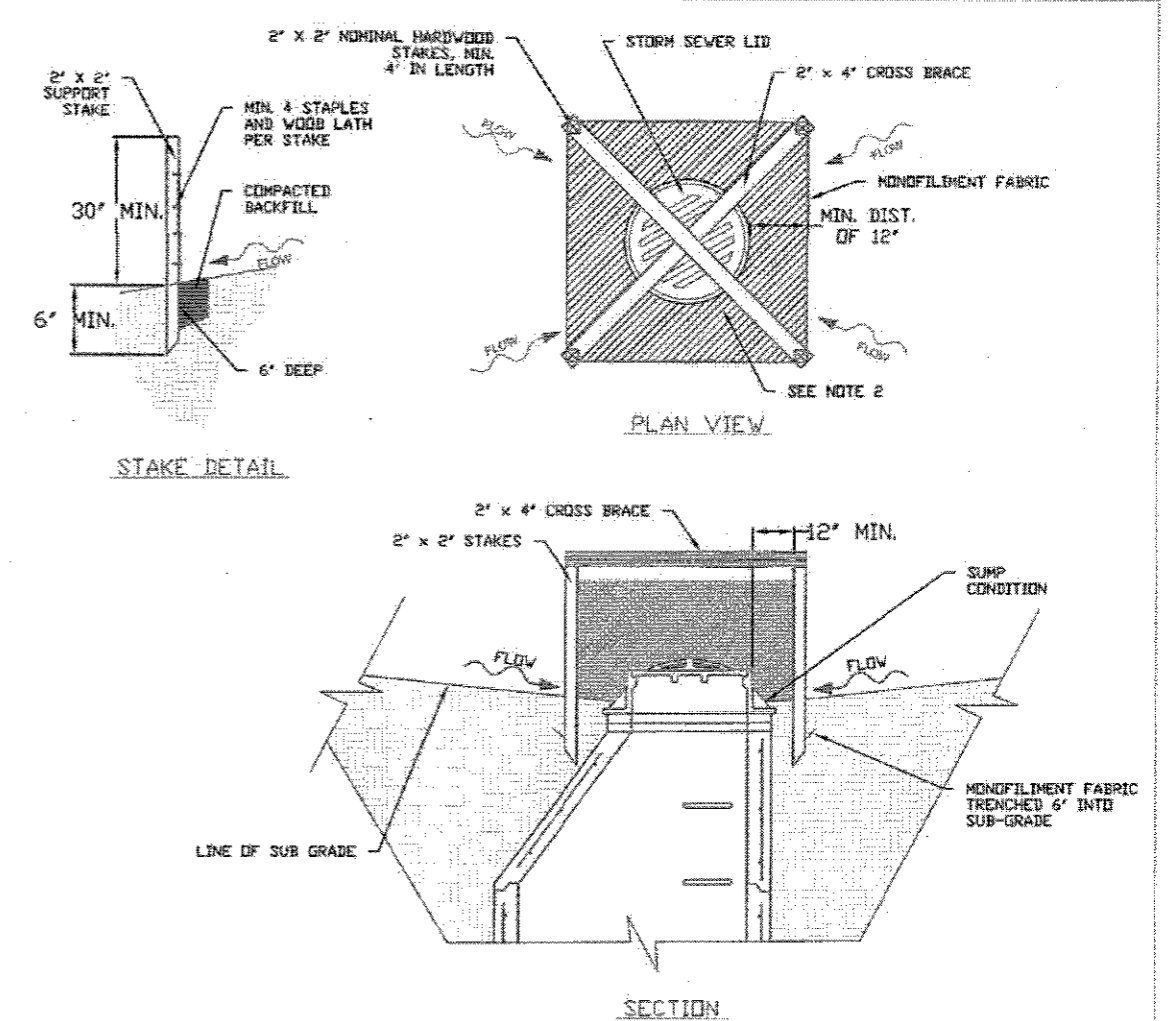


- NOTES:**
- Staples shall be placed in a diamond pattern at 2 per s.y. for stitched blankets. Non-stitched shall use 4 staples per s.y. of material. This equates to 200 staples with stitched blanket and 400 staples with non-stitched blanket per 100 s.y. of material.
  - Staple or push pin lengths shall be selected based on soil type and conditions. (minimum staple length is 6")
  - Erosion control material shall be placed in contact with the soil over a prepared seedbed.
  - All anchor slots shall be stapled at approximately 12" intervals.

DESIGNED	JRR	DATE	
DRAWN	TGB	DATE	11/06
CHECKED	RTM	DATE	
DATE	12/07/2017	REVISED	

**EROSION CONTROL BLANKET INSTALLATION DETAILS**

## INLET PROTECTION - MONOFILAMENT FABRIC BARRIER FENCE



- NOTES:**
- 2 x 2 nominal hardwood stakes, 4 foot minimum length, driven into ground approximately 18 inches, stakes driven a minimum width of 12 inches away from the drop inlet.
  - Area inside the fence, from edge of fabric to structure, must be stabilized with Erosion Control Blanket, Turf Reinforcement Mat, Geotextile 592 Table 2 Class 2 or CA-7 stone
  - Maximum height of the fabric above the crest of the drop inlet shall be 30". Place the bottom 6 inches of the fabric in a trench and backfill with 6 inches of 95% compacted soil.
  - Stakes must be a maximum of 4 feet apart.
  - A maintenance schedule must maintain a sediment accumulation of less than 50% of the height of the monofilament fabric.
  - Monofilament fabric shall meet the requirement of Material Specification 592 Geotextile Table 1, Class 4.
  - Monofilament fabric shall be secured to each 2' x 2' nominal hardwood stake with a minimum of 4 steel staple fasteners and wood lath. Wood lath shall be a minimum length of 10 inches. Wire fasteners should be used if metal T-Posts are installed in place of hardwood stakes.

REFERENCE Project	_____	STANDARD DWG. NO.	IUM-531
Designed	_____ Date _____	SHEET	1 OF 1
Checked	_____ Date _____	DATE	04-6-15
Approved	_____ Date _____		