

04-27-2018 LETTING ITEM 155

STATE OF ILLINOIS
DEPARTMENT OF TRANSPORTATION

F.A.I. RTE.	SECTION	COUNTY	TOTAL SHEETS	SHEET NO.
72	D6 PATCHING I-72 2018-1	PIKE/ SCOTT ILLINOIS	9	1
			CONTRACT NO. 72K50	

FOR INDEX OF SHEETS, SEE SHEET NO. 2

PROPOSED IMPROVEMENTS

FAI 72 (I 72)
D6 PATCHING I-72 2018-1
PATCHING

PIKE /SCOTT CO.

C-96-076-18

PIKE CO.
ADT = 8300
SU = 6.63%
MU = 30.72%
PV = 62.65%

SCOTT CO.
ADT = 8625
SU = 6.24%
MU = 26.68%
PV = 67.08%

PROJECT BEGINS
STA. 1395+00.00
PIKE COUNTY

BEGIN 1ST. SECTION
STA. 1395+00.00

BEGIN 2ND. SECTION
STA. 619+16.50 (WB)
STA. 118+96.50 (EB)
SCOTT COUNTY

OMISSION

STA. 644+33.12 TO STA. 645+97.78 S.N. 086-0041 (WB)
STA. 145+14.63 TO STA. 146+77.32 S.N. 086-0040 (EB)

END 1ST. SECTION
STA. 1560+00.00

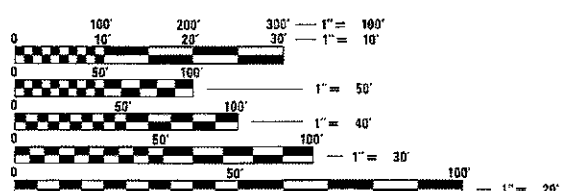
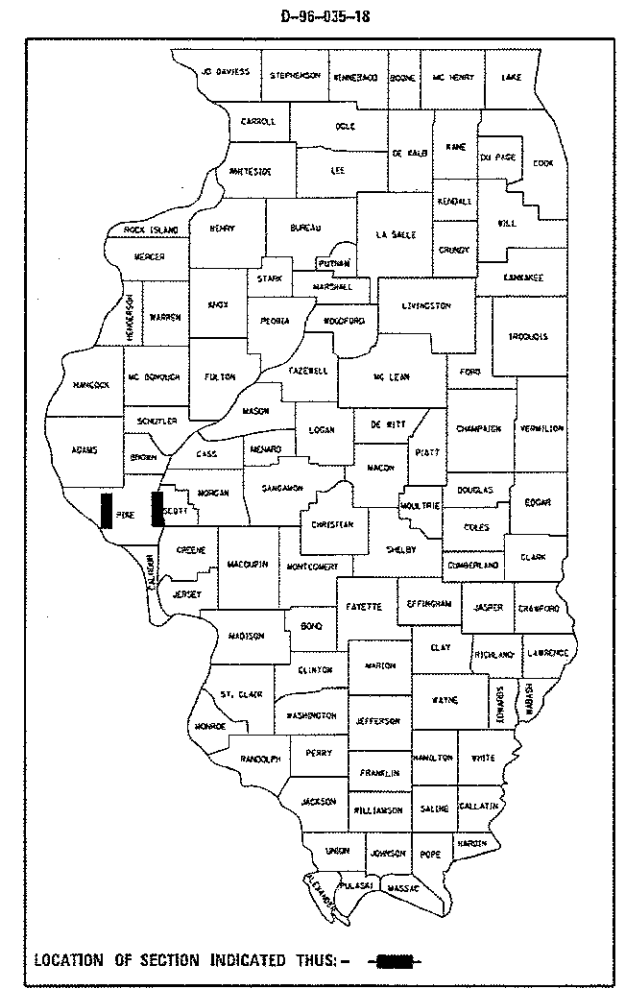
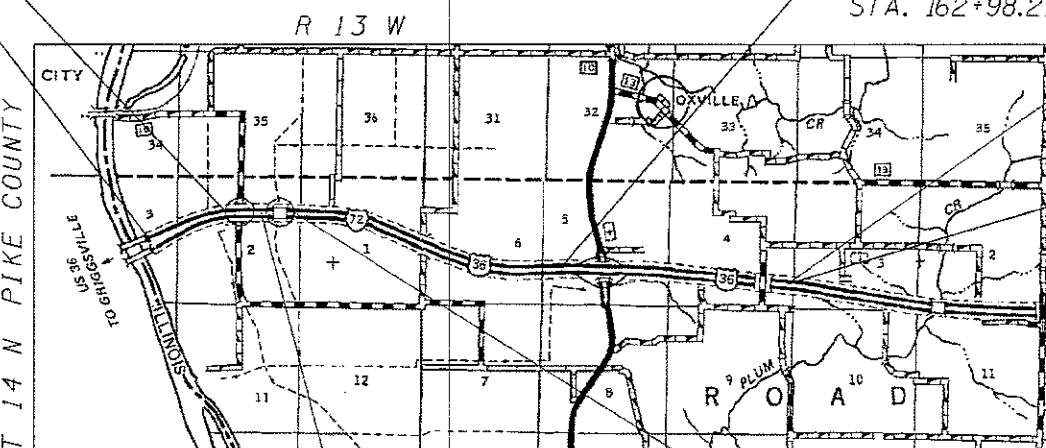
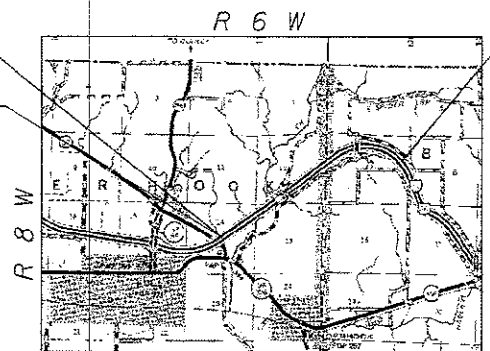
STATION EQUATION
STA. 162+98.21 BK = STA. 40+00.00 AH

END 2ND. SECTION
STA. 146+00.00

PROJECT ENDS
STA. 146+00.00

STATION EQUATION
STA. 653+19.02 BK = STA. 36+25.00 AH (WB)
STA. 154+03.22 BK = STA. 36+25.00 AH (EB)

OMISSION
STA. 43+14.04 TO STA. 47+61.96
S.N. 086-0042 (EB) & S.N. 086-0043 (WB)



FULL SIZE PLANS HAVE BEEN PREPARED USING STANDARD ENGINEERING SCALES. REDUCED SIZED PLANS WILL NOT CONFORM TO STANDARD SCALES. IN MAKING MEASUREMENTS ON REDUCED PLANS, THE ABOVE SCALES MAY BE USED.

J.U.L.I.E.
JOINT UTILITY LOCATION INFORMATION FOR EXCAVATION
1-800-892-0123
OR 811

PROJECT ENGINEER : MIKE IRWIN - (217)524-7765
PROJECT MANAGER : TIM SHARP - (217)524-9160

CONTRACT NO. 72K50

STATE OF ILLINOIS
DEPARTMENT OF TRANSPORTATION

SUBMITTED *February 22, 2018*

Jeffrey M. Smith
REGION FOUR ENGINEER

Mark B. ...
ENGINEER OF DESIGN AND ENVIRONMENT

Paul P. ...
DIRECTOR OF HIGHWAYS PROJECT IMPLEMENTATION

PRINTED BY THE AUTHORITY OF THE STATE OF ILLINOIS

INDEX OF SHEETS

SHEET NO.	DESCRIPTION
1.	COVER SHEET
2.	INDEX OF SHEETS, STANDARDS, GENERAL NOTES & SIGNATURE
3.	SUMMARY OF QUANTITIES
4.	PATCHING SCHEDULE
5.	PROJECT LOCATION MAP
6-9.	PROJECT TYPICAL SECTIONS

STANDARDS

STANDARD NO.	DESCRIPTION
442201-03	CLASS C AND D PATCHES
701101-05	OFF-RD OPERATIONS, MULTILANE, MORE THAN 15' TO 24" FROM PAVEMENT EDGE
701106-02	OFF-RD OPERATIONS, MULTILANE, MORE THAN 15' AWAY
701400-09	APPROACH TO LANE CLOSURE, FREEWAY/EXPRESSWAY
701401-11	LANE CLOSURE, FREEWAY/EXPRESSWAY
701411-09	LANE CLOSURE, MULTILANE, AT ENTRANCE OR EXIT RAMP, FOR SPEED \geq 45 MPH
701901-07	TRAFFIC CONTROL DEVICES

MIXTURE REQUIREMENTS

THE FOLLOWING MIXTURE REQUIREMENTS ARE APPLICABLE FOR THIS PROJECT

MIXTURE USE(S):	PARTIAL DEPTH PATCHING TOP 2"	PARTIAL DEPTH PATCHING LOWER LIFTS
AC/PG:	PG 64-22	PG 64-22
DESIGN AIR VOIDS:	4.0% @ N90	4.0% @ N90
MIXTURE COMPOSITION:	IL 9.5	IL 9.5
FRICITION AGGREGATE:	MIX D	N/A
QUALITY MANAGEMENT:	QC/QA	QC/QA
SUBLOT SIZE:	N/A	N/A

STATE OF ILLINOIS
DEPARTMENT OF TRANSPORTATION
DIVISION OF HIGHWAYS
DISTRICT 6

EXAMINED February 23rd 20 18
[Signature]
ENGINEER OF OPERATIONS

EXAMINED February 15th 20 18
[Signature]
ENGINEER OF PROJECT IMPLEMENTATION

EXAMINED February 14 20 18
[Signature]
ENGINEER OF PROGRAM DEVELOPMENT

CODE NO.	ITEM	UNIT	TOTAL QUANTITY	CONSTRUCTION CODE	
				PIKE ROADWAY	SCOTT ROADWAY
				0006 RURAL	0006 RURAL
44201827	CLASS D PATCHES, TYPE II, 15 INCH	SQ YD	54		54
44201833	CLASS D PATCHES, TYPE IV, 15 INCH	SQ YD	1924	1117	807
67100100	MOBILIZATION	L SUM	1	0.5	0.5
70100420	TRAFFIC CONTROL AND PROTECTION, STANDARD 701411	EACH	1		1
70100800	TRAFFIC CONTROL AND PROTECTION, STANDARD 701401	L SUM	1	0.5	0.5
X4406640	PARTIAL DEPTH REMOVAL, TYPE IV, 4"	SQ YD	801	801	
X4421000	PARTIAL DEPTH PATCHING	TON	180	180	
X4820110	HOT-MIX ASPHALT SHOULDER REMOVAL AND REPLACEMENT (SPECIAL)	SQ YD	100	75	25
X7015005	CHANGEABLE MESSAGE SIGN	CAL DAY	30	15	15

100%
STATE

FILE NAME =	USER NAME = CANCELS	DESIGNED -	REVISED -
S:\CONTRACTMAINT\CAD\72K50 - 06 Patching	72 2018-1 - Pike - Scott Co\PLANS\0672K50-11	BF50Wgn - GMS	REVISED -
Default	PLOT SCALE = 48.0000' / 1" =	CHECKED -	REVISED -
	PLOT DATE = 2/21/2018	DATE -	REVISED -

STATE OF ILLINOIS
DEPARTMENT OF TRANSPORTATION

SUMMARY OF QUANTITIES

SCALE: _____ SHEET _____ OF _____ SHEETS STA. _____ TO STA. _____

F.A.I. RTE.	SECTION	COUNTY	TOTAL SHEETS	SHEET NO.
72	06 PATCHING I-72 2018-1	PIKE/ SCOTT	9	3
CONTRACT NO. 72K50				
ILLINOIS FED. AID PROJECT				

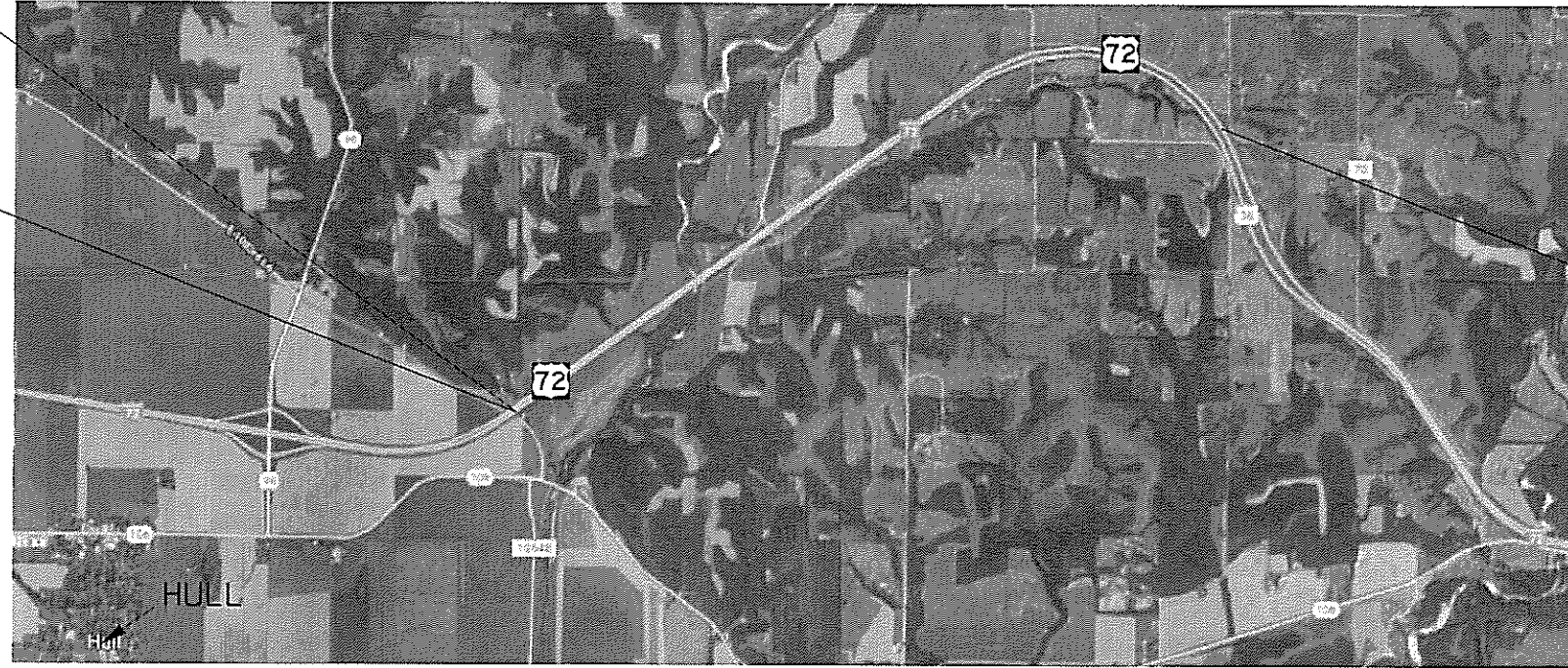
PATCHING SCHEDULE										
Location: I-72 between E. of Hull and W. of Barry - Pike County										
WESTBOUND - PARTIAL DEPTH (4") & FULL WIDTH										
STATION	TO	STATION	PASSING LANE		AREA	DRIVING LANE		AREA	PARTIAL DEPTH REMOVAL, TY, IV	PATIAL DEPTH PATCHING
			LENGTH (FT)	WIDTH (FT)	SQ YD	LENGTH (FT)	WIDTH (FT)	SQ YD	SQ YD	TON
1395+00.00	TO	1395+50.00	50.00	12.00	66.67	50.0	12.00	66.67	133.40	29.88
1398+00.00	TO	1400+50.00	250.00	12.00	333.33	250.0	12.00	333.33	666.70	149.34
TOTAL WB =									801.00	180.00
EASTBOUND - FULL DEPTH (15")										
STATION	TO	STATION	PASSING LANE		AREA	DRIVING LANE (OUTSIDE)		AREA	CLASS D, TY IV	
			LENGTH (FT)	WIDTH (FT)	SQ YD	LENGTH (FT)	WIDTH (FT)	SQ YD	SQ YD	
1503+00.00	TO	1507+50.00	-	-	-	450.00	8.00	400.00		400.00
1532+00.00	TO	1537+75.00	-	-	-	575.00	6.00	383.33		383.40
1546+50.00	TO	1551+50.00	-	-	-	500.00	6.00	333.33		333.40
TOTAL EB =										1116.80

PATCHING SCHEDULE									
Location: I-72 from E. of Illinois River Bridges to IL 100 - Scott Co.									
WESTBOUND (15" DEPTH)									
STATION	PASSING LANE		AREA	DRIVING LANE		AREA	CLASS D, TY II	CLASS D, TY IV	
	LENGTH (FT)	WIDTH (FT)	SQ YD	LENGTH (FT)	WIDTH (FT)	SQ YD	SQ YD	SQ YD	
62+34				20.0	12.00	26.67			26.70
47+62	5.00	12.00	6.67	5.00	12.00	6.67	13.40		
43+10	5.00	12.00	6.67	5.00	12.00	6.67	13.40		
145+98	5.00	12.00	6.67	5.00	12.00	6.67	13.40		
144+09	25.00	12.00	33.33	25.00	12.00	33.33			66.70
629+64				35.00	12.00	46.67			46.70
619+76				155.00	12.00	206.67			206.67
TOTAL WB =							40.20		346.80
EASTBOUND (15" DEPTH)									
STATION	PASSING LANE		AREA	DRIVING LANE		AREA	CLASS D, TY II	CLASS D, TY IV	
	LENGTH (FT)	WIDTH (FT)	SQ YD	LENGTH (FT)	WIDTH (FT)	SQ YD	SQ YD	SQ YD	
120+54				65.00	12.00	86.67			86.70
125+05				125.00	12.00	166.67			166.70
144+50				55.00	12.00	73.33			73.40
146+77.32	30.00	12.00	40.00	30.00	12.00	40.00			80.00
43+00				10.00	12.00	13.33	13.40		
47+61.96	10.00	12.00	13.33	10.00	12.00	13.33			26.70
62+57	10.00	12.00	13.33	10.00	12.00	13.33			26.70
TOTAL EB =							13.40		460.20
TOTAL WB + EB =							53.60		807.00

PROJECT BEGINS
STA. 1395+00.00

BEGIN 1ST. SECTION
STA. 1395+00.00

BEGIN 2ND. SECTION
STA. 619+16.50 (WB)
STA. 118+96.50 (EB)



END 1ST. SECTION
STA. 1560+00.00

OMISSION
STA. 644+33.12 TO STA. 645+97.78 S.N. 086-0041 (WB)
STA. 145+14.63 TO STA. 146+77.32 S.N. 086-0040 (EB)

STATION EQUATION
STA. 162+98.21 BK = STA. 40+00.00 AH (WB) & (EB)



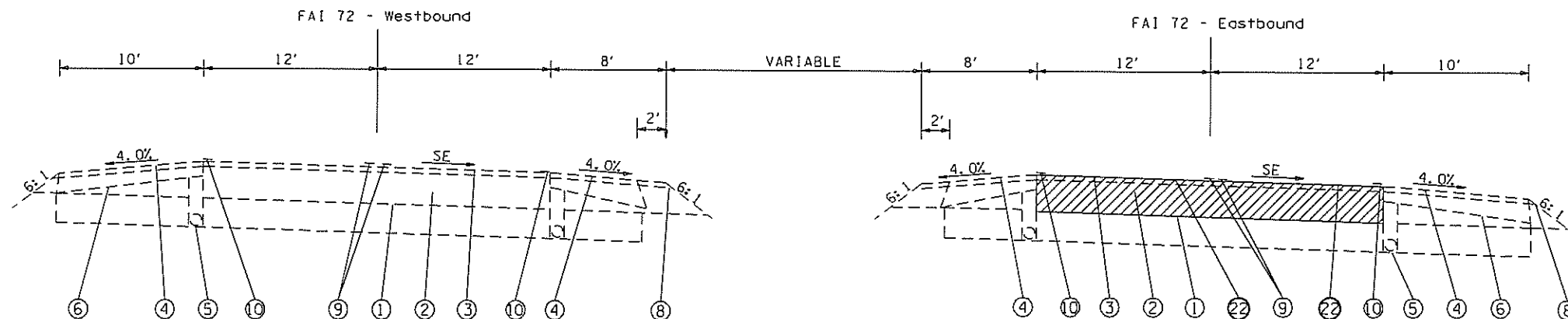
PROJECT ENDS
STA. 146+00.00

END 2ND. SECTION
STA. 146+00.00

STATION EQUATION
STA. 653+19.02 BK = STA. 36+25.00 AH (WB)
STA. 154+03.22 BK = STA. 36+25.00 AH (EB)

OMISSION
STA. 43+14.04 TO STA. 47+61.96
S.N. 086-0042 (EB) & S.N. 086-0043 (WB)

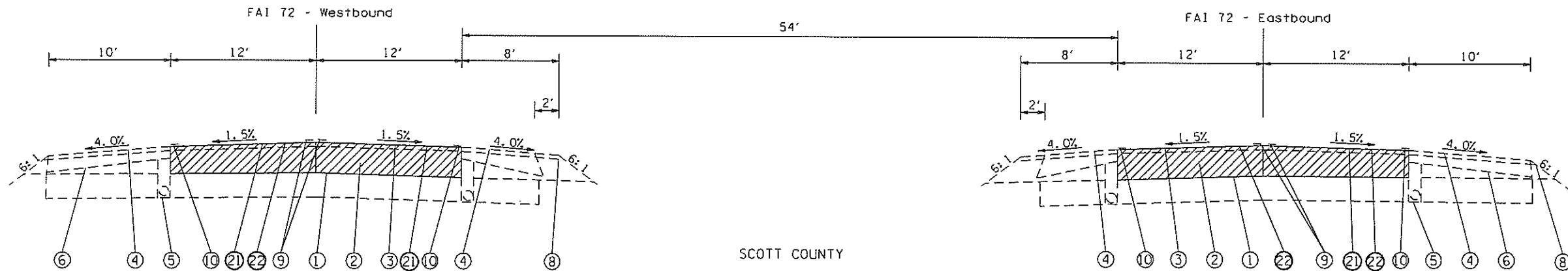
FILE NAME *	USER NAME = CANCELS	DESIGNED -	REVISED -	STATE OF ILLINOIS DEPARTMENT OF TRANSPORTATION	LOCATION MAP	F.A.I. RTE.	SECTION	COUNTY	TOTAL SHEETS	SHEET NO.	
S:\CDTRMAINT\CAD\72K50 - 06 Patching	72 2018-1 - Pike -Scott Co\PLANS\0672K50-sh	DBAWN.dgn -	REVISED -			72	06 PATCHING 1-72 2018-1	PIKE/ SCOTT	9	5	
Default	PLOT SCALE = 48,0028' / in.	CHECKED -	REVISED -			CONTRACT NO. 72K50					
	PLOT DATE = 2/21/2018	DATE -	REVISED -			ILLINOIS FED. AID PROJECT					



STA. 645+97.78 TO STA. 649+32.47

SCOTT COUNTY
 TYPICAL SECTION #3
 STATION EQUATION:
 STA. 154+03.22 (BK) = STA. 36+25.00 (AH) E.B.

STA. 146+77.32 TO STA. 154+03.22
 STA. 36+25.00 TO STA. 37+74.83



STA. 649+32.47 TO STA. 653+19.00
 STA. 36+25.00 TO STA. 43+14.04
 STA. 47+61.96 TO STA. 60+54.00
 STA. 60+54.00 TO STA. 94+19.00
 STA. 94+19.00 TO STA. 124+24.00

SCOTT COUNTY
 TYPICAL SECTION #4
 STATION EQUATION:
 STA. 653+19.00 (BK) = STA. 36+25.00 (AH) W.B.
 BRIDGE OMISSION:
 STA. 43+14.04 TO STA. 47+61.96

STA. 37+74.83 TO STA. 43+14.04
 STA. 47+61.96 TO STA. 60+54.00
 STA. 60+54.00 TO STA. 94+19.00
 STA. 94+19.00 TO STA. 124+24.00

LEGEND:

- ① EXIST. LIME MODIFIED SOIL, 12"
- ② EXIST. BIT. CONC. PAVEMENT, FULL DEPTH, 15" (13" BINDER, 2" SURFACE)
- ③ EXIST. POLYMERIZED BIT. CONC. SURFACE COURSE SUPERPAVE. MIX. D. N70, 2"
- ④ EXIST. BIT. CONC. SURFACE COURSE CLASS I, TY. 3, MIX. C (LOW ESAL) W/ RUMBLE STRIP, 2"
- ⑤ EXIST. PIPE DRAINS - 4"
- ⑥ EXIST. LIME MODIFIED SOIL OR SUB-BASE GRANULAR MATERIAL, TY. C
- ⑦ EXIST. COMBINATION CONCRETE CURB AND GUTTER TY. B-6.24
- ⑧ EXIST. AGG. SHOULDER TY. A
- ⑨ EXIST. PERFORMED PLASTIC PAVEMENT PMARKING, TY. B, LINE 5" W/ RAISED REFLECTIVE PAVEMENT MARKERS
- ⑩ EXIST. THERMOPLASTIC PAVEMENT MARKING, LINE 5"
- ⑪ EXIST. STEEL PLATE GUARDRAIL
- ⑫ EXIST. HMA SHOULDERS, 1 1/2"
- ⑬ EXIST. RUMBLE STRIP
- ⑭ EXIST. C.R.P.C.C. PAVEMENT STANDAR 2327, 8"
- ⑮ EXIST. STABILIZED SUB-BASE ON EARTH BASE, 4"
- ⑯ EXIST. STABILIZED SHOULDER STANDARD 2237, 8"

- ⑰ EXIST. BIT. SHOULDER, 8"
- ⑱ EXIST. BIT. CONC. PAVEMENT, FULL DEPTH, 15" (13.25" BINDER, 2" SURFACE)
- ⑲ EXIST. BIT. SHOULDERS, SUPERPAVE MIX. IL 9.5L, LOW ESAL, W/ RUMBLE STRIP, 2"
- ⑳ EXIST. AGG. SHOULDER TY. B
- ㉑ PROP. CLASS D PATCHES, TYPE II, 15" (SEE SCHEDULE OF QUANTITIES)
- ㉒ PROP. CLASS D PATCHES, TYPE IV, 15" (SEE SCHEDULE OF QUANTITIES)
- ㉓ PROP. PARTIAL DEPTH REMOVAL, TYPE IV, 4" (SEE SCHEDULE OF QUANTITIES)
- ㉔ PROP. PARTIAL DEPTH PATCHING, 4" (SEE SCHEDULE OF QUANTITIES)

SHOULDER SLOPES IN SECTIONS:

- Ⓐ HIGH SIDE: WHEN THE SE RATE OF THE PAVEMENT EXCEEDS 4.0%, THE SHOULDER SHALL BE SLOPED SO THAT THE ALGEBRAIC DIFFERENCE BETWEEN PAVEMENT AND SHOULDER WILL NOT BE GREATER THAN 8.0%. WHEN THE SE RATE OF THE PAVEMENT IS BETWEEN 0.0% AND 4.0%, THE SHOULDER SHALL BE SLOPED AT 4.0%.
- Ⓑ LOW SIDE: SLOPE SHALL BE THE SAME AS THE SE RATE, BUT NOT LESS THAN 4.0%.

MODEL: I:\asur\...
 FILE: D:\E:\SCOTT\...
 DATE: 2/21/2018

USER NAME = CINCELS	DESIGNED - _____	REVISED - _____
DRAWN - _____	REVISION - _____	
CHECKED - _____	REVISION - _____	
DATE - _____	REVISION - _____	

STATE OF ILLINOIS
 DEPARTMENT OF TRANSPORTATION

TYPICAL SECTIONS

SCALE: _____ SHEET _____ OF _____ SHEETS STA. _____ TO STA. _____

F.A.I. RTE.	SECTION	COUNTY	TOTAL SHEETS	SHEET NO.
72	D6 PATCHING I-72 2018-1	PIKE/ SCOTT	9	7
CONTRACT NO. 72K50			ILLINOIS FED. AID PROJECT	

