

DATE
BY
CORRECTED
PLOTTED
GRAB FILE NAME

DATE
BY
CORRECTED
PLOTTED
GRAB FILE NAME

CODE NO.	ITEM	UNIT	TOTAL QUANTITY	CONSTRUCTION CODE																
				LAKE COUNTY					LAKE CO FOREST PD	OLD MILL CREEK	LINDENHURST	LAKE CO FIRE PROTECTION DISTRICT	LAKE VILLA TOWNSHIP							
				ROADWAY	SN 049-0610	100% COUNTY	TRAF SIG PR US 45 GRASS LAKE	TRAF SIG EX US 45 GRASS LAKE	80% COUNTY 20% LOCAL	80% COUNTY 20% LOCAL	80% COUNTY 20% LOCAL	100% LOCAL	80% COUNTY 20% LOCAL							
				0001	0008	SN	049-0005 049-0611 049-0007	0008	0021	0021	0028	0028	0028	0021	0028					
* A2005016	TREE, GYMNOCLADUS DIOICUS (KENTUCKY COFFEETREE), 2" CALIPER, BALLED AND BURLAPPED	EACH	22	22																
* A2005040	TREE, GYMNOCLADUS DIOICUS ESPRESSO-JFS (ESPRESSO KENTUCKY COFFEETREE), 2-1/2" CALIPER, BALLED	EACH	25	25																
* A2005116	TREE, JUGLANS NIGRA (BLACK WALNUT), 2" CALIPER, BALLED AND BURLAPPED	EACH	10	10																
* A2005416	TREE, LIRIODENDRON TULIPIFERA (TULIP TREE), 2" CALIPER, BALLED AND BURLAPPED	EACH	33	33																
* A2005616	TREE, OSTRYA VIRGINIANA (AMERICAN HOPHORNBEAM), 2" CALIPER, BALLED AND BURLAPPED	EACH	9	9																
* A2006266	TREE, POPULUS TREMULOIDES (QUAKING ASPEN), 6' HEIGHT, CLUMP FORM, BALLED AND BURLAPPED	EACH	35	35																
* A2006524	TREE, QUERCUS BICOLOR (SWAMP WHITE OAK), 3" CALIPER, BALLED AND BURLAPPED	EACH	6	6																
* A2006568	TREE, QUERCUS BICOLOR (SWAMP WHITE OAK), 7' HEIGHT, CLUMP FORM, BALLED AND BURLAPPED	EACH	7	7																
* A2006616	TREE, QUERCUS IMBRICARIA (SHINGLE OAK), 2" CALIPER, BALLED AND BURLAPPED	EACH	12	12																
* A2006716	TREE, QUERCUS MACROCARPA (BUR OAK), 2" CALIPER, BALLED AND BURLAPPED	EACH	10	10																
* A2006726	TREE, QUERCUS MACROCARPA (BUR OAK), 3" CALIPER, BALLED AND BURLAPPED	EACH	4	4																
* A2006816	TREE, QUERCUS MUEHLENBERGII (CHINKAPIN OAK), 2" CALIPER, BALLED AND BURLAPPED	EACH	31	31																
* X1800015	TREE, QUERCUS MUEHLENBERGII (CHINKAPIN OAK), CONTAINER GROWN, 15-GALLON (ROOT PRODUCTION METHOD).	EACH	150	150																

URBAN

* Specialty Item

FILE NAME: P:\X\p1020pin\01\p00000000\Illinois State Documents\US45 - 617985.v00 - Design\CD\Rechen\AS\area\0188775.dwg - 500.19.dwg

USER NAME = 35361	DESIGNED BN	REVISED -
	DRAWN BN	REVISED
PLLOT SCALE = 1:8000 / in.	CHECKED FZ	REVISED
PLLOT DATE = 12/7/2017	DATE 02/02/2017	REVISED

STATE OF ILLINOIS
DEPARTMENT OF TRANSPORTATION

SUMMARY OF QUANTITIES			
SCALE:	SHEET	OF SHEETS	STA. TO STA.

F.A.P. RTE. 344	SECTION 39 R	COUNTY LAKE	TOTAL SHEETS 510	SHEET NO. 25
CONTRACT NO. 60T75				
ILLINOIS FED. AID PROJECT				

REV 4-16-18

DATE: _____
 BY: _____
 SURVEYED _____
 PLOTTED _____
 CHECKED _____
 PLAN NO. _____
 NOTE BOOK _____
 RT. OF WAY CHECKED _____
 CADD FILE NAME _____

DATE: _____
 BY: _____
 PROFILE SURVEYED _____
 PLOTTED _____
 CHECKED _____
 PROFILE NO. _____
 NOTE BOOK _____
 STRUCTURE NOTATION CHECKED _____
 FILE NAME = p:\1\trp\2018\1800016\1800016.dwg

CODE NO.	ITEM	UNIT	TOTAL QUANTITY	CONSTRUCTION CODE																	
				LAKE COUNTY						LAKE CO FOREST PD	OLD MILL CREEK	LINDENHURST	LAKE CO FIRE PROTECTION DISTRICT	LAKE VILLA TOWNSHIP							
				ROADWAY	SN 049-0610	100% COUNTY		80% COUNTY 20% LOCAL	80% COUNTY 20% LOCAL	80% COUNTY 20% LOCAL	100% LOCAL	80% COUNTY 20% LOCAL	TRAFFIC SIGNAL EVP	80% COUNTY 20% LOCAL							
						0001	0008	049-0006	049-0611	049-0007	TRAF SIC PR US 45 @ PR GRASS LAKE	TRAF SIC EX US 45 @ PR GRASS LAKE	SIDEWALK & PATH	SIDEWALK & PATH	SIDEWALK & PATH	0021	0028				
* A2007116	TREE, QUERCUS RUBRA (RED OAK), 2" CALIPER, BALLED AND BURLAPPED	EACH	12	12																	
* A2007132	TREE, QUERCUS SCHUETTI (SWAMP BUR OAK), 2" CALIPER, BALLED AND BURLAPPED	EACH	16	16																	
* A2007616	TREE, TAXODIUM DISTICHUM (COMMON BALD CYPRESS), 2" CALIPER, BALLED AND BURLAPPED	EACH	19	19																	
* A2008400	TREE, TILIA MONGOLICA HARVEST GOLD (HARVEST GOLD LINDEN), 2-1/2" CALIPER, BALLED AND BURLAPPED	EACH	31	31																	
* A2C035G3	TREE, JUGLANS NIGRA (BLACK WALNUT), CONTAINER GROWN, 3-GALLON	EACH	100	100																	
* A2016016	TREE, QUERCUS ELLIPSOIDALIS (HILL'S OAK), 2" CALIPER, BALLED AND BURLAPPED	EACH	24	24																	
* X1800016	TREE, QUERCUS ALBA (WHITE OAK), CONTAINER GROWN, 15-GALLON (ROOT PRODUCTION METHOD), SPECIAL	EACH	150	150																	
* X1800017	TREE, QUERCUS ELLIPSOIDALIS (HILL'S OAK), CONTAINER GROWN, 15-GALLON (ROOT PRODUCTION METHOD), SPECIAL	EACH	100	100																	
* X1800018	TREE, QUERCUS RUBRA (RED OAK), CONTAINER GROWN, 15-GALLON (ROOT PRODUCTION METHOD), SPECIAL	EACH	100	100																	
* A2C35G15	TREE, QUERCUS BICOLOR (SWAMP WHITE OAK), CONTAINER GROWN, 15-GALLON (ROOT PRODUCTION METHOD), SPECIAL	EACH	150	150																	
* A2C36G15	TREE, QUERCUS MACROCARPA (BURR OAK), CONTAINER GROWN, 15-GALLON (ROOT PRODUCTION METHOD), SPECIAL	EACH	150	150																	
* A2C37G15	TREE, QUERCUS PALUSTRIS (PIN OAK), CONTAINER GROWN, 15-GALLON (ROOT PRODUCTION METHOD), SPECIAL	EACH	100	100																	
* B2000566	TREE, AMELANCHIER CANADENSIS (SHADBLOW SERVICEBERRY), 6' HEIGHT, SHRUB FORM, BALLED AND BURLAPPED	EACH	6	6																	
* B2000770	TREE, AMELANCHIER X GRANDIFLORA AUTUMN BRILLIANCE (AUTUMN BRILLIANCE SERVICE BERRY), 2" CALIPER,	EACH	19	19																	
* B2001164	TREE, CERCIS CANADENSIS (EASTERN REDBUD), 5' HEIGHT, CLUMP FORM, BALLED AND BURLAPPED	EACH	18	18																	

URBAN

* SPECIALTY ITEMS

USER NAME = 35361	DESIGNED BN	REVISED -
	DRAWN BN	REVISED
PLOT SCALE = 1:8000	CHECKED FZ	REVISED
PLOT DATE = 12/7/2017	DATE 02/02/2017	REVISED

STATE OF ILLINOIS
 DEPARTMENT OF TRANSPORTATION

SUMMARY OF QUANTITIES			
SCALE:	SHEET	OF SHEETS	STA. TO STA.

F.A.P. RTE. 344	SECTION 39 R	COUNTY LAKE	TOTAL SHEETS 510	SHEET NO. 26
CONTRACT NO. 60T75				(ILLINOIS) FED. AID PROJECT

REV 4-16-18

PLAN
 SURVEYED
 PLOTTED
 GROUND CHECKED
 STRUCTURE NOTATION OK
 NO. _____
 DATE _____

PROFILE
 SURVEYED
 PLOTTED
 GROUND CHECKED
 STRUCTURE NOTATION OK
 NO. _____
 DATE _____

FILE NAME : p:\1\topol\2017\01\11\mns\State\Documents\US45 - 647955148 - Design\CAD\Roadway\Sheets\1160175.shx.S10.21.dgn

URBAN

CODE NO.	ITEM	UNIT	TOTAL QUANTITY	CONSTRUCTION CODE																	
				LAKE COUNTY					LAKE CO FOREST PD	OLD MILL CREEK	LINDENHURST	LAKE CO FIRE PROTECTION DISTRICT	LAKE VILLA TOWNSHIP								
				100% COUNTY					80% COUNTY 20% LOCAL	80% COUNTY 20% LOCAL	80% COUNTY 20% LOCAL	100% LOCAL	80% COUNTY 20% LOCAL								
				ROADWAY	SN 049-0610	049-0006 049-0611 049-0007	TRAF SIG PR US 45 0 PR GRASS LAKE	TRAF SIG EX US 45 0 PR GRASS LAKE	SIDEWALK & PATH	SIDEWALK & PATH	SIDEWALK & PATH	TRAFFIC SIGNAL EVP	SIDEWALK								
0001	0008	0008	0021	0021	0028	0028	0028	0021	0028												
* B2001616	TREE, CRATAEGUS CRUSGALLI INERMIS (THORN LESS COCKSPUR HAWTHORN), 2" CALIPER, TREE FORM, BALLED	EACH	13	13																	
* B2001666	TREE, CRATAEGUS CRUSGALLI INERMIS (THORNLESS COCKSPUR HAWTHORN), 6' HEIGHT, SHRUB FORM, BALLED	EACH	22	22																	
* B2002364	TREE, HALEZIA TETRAPTERA (CAROLINA SILVERBELL), 5' HEIGHT, CLUMP FORM, BALLED AND BURLAPPED	EACH	9	9																	
* B2002616	TREE, MALUS ADAMS (ADAMS CRABAPPLE), 2" CALIPER, TREE FORM, BALLED AND BURLAPPED	EACH	15	15																	
* B2004000	TREE, MALUS ORANGE CRUSH (ORANGE CRUSH CRABAPPLE), 6' HEIGHT, CLUMP FORM, BALLED AND BURLAPPED	EACH	24	24																	
* B2004516	TREE, MALUS RED JEWEL (RED JEWEL CRAB APPLE), 2" CALIPER, TREE FORM, BALLED AND BURLAPPED	EACH	18	18																	
* B2005385	TREE, METASEQUOIA GLYPTOSTROBOIDES (DAWN REDWOOD), 2" CALIPER, BALLED AND BURLAPPED	EACH	12	12																	
* B2010070	TREE, CLADRASTIS KENTUCKEA (AMERICAN YELLOWWOOD), 2" CALIPER, BALLED AND BURLAPPED	EACH	21	21																	
* C2003248	SHRUB, HAMAMELIS VERNALIS (VERNAL WITCH HAZEL), 4' HEIGHT, BALLED AND BURLAPPED	EACH	174	174																	
* C2012460	SHRUB, VIBURNUM LENTAGO (NANNYBERRY VIBURNUM), 5' HEIGHT, BALLED AND BURLAPPED	EACH	60	60																	
* C2012760	SHRUB, VIBURNUM PRUNIFOLIUM (BLACKHAW VIBURNUM), 5' HEIGHT, BALLED AND BURLAPPED	EACH	168	168																	
* C3005924	SHRUB, RHUS GLABRA (SMOOTH SUMAC), 2' HEIGHT, BARE ROOT	EACH	165	165																	
* C3006024	SHRUB, RHUS TYPHINA (STAGHORN SUMAC), 2' HEIGHT, BARE ROOT	EACH	451	451																	
* D2001648	EVERGREEN, JUNIPERUS VIRGINIANA CANAERTII (CANAERTI RED CEDAR), 4' HEIGHT, BALLED AND BURLAPPED	EACH	100	100																	

165 165

* SPECIALTY ITEMS

USER NAME = 35361	DESIGNED BN	REVISED
PLOT SCALE = 1:8000' / in.	DRAWN BN	REVISED
PLOT DATE = 12/7/2017	CHECKED FZ	REVISED
	DATE 02/02/2017	REVISED

STATE OF ILLINOIS
 DEPARTMENT OF TRANSPORTATION

SUMMARY OF QUANTITIES			
SCALE:	SHEET	OF SHEETS	STA. TO STA.

F.A.P. RTE. 344	SECTION 39 R	COUNTY LAKE	TOTAL SHEETS 510	SHEET NO. 27
CONTRACT NO. 60T75				ILLINOIS FED. AID PROJECT

△ REV 4-16-18

PLAN
 SURVEYED
 PLOTTED
 NOTE BOOK
 NO. _____
 DATE _____

PROFILE
 GRADES CHECKED
 STRUCTURE NOTATIONS OK'D
 NO. _____
 DATE _____

FILE NAME: n:\temp\p2\print\01\ppr\com\mill\mms\State\Documents\US45 - 647985\45 - Design\CAD\Roadway\Sheet\10180775.sht, 500, 22.dgn

CODE NO.	ITEM	UNIT	TOTAL QUANTITY	CONSTRUCTION CODE																	
				LAKE COUNTY						LAKE CO FOREST PD	OLD MILL CREEK	LINDENHURST	LAKE CO FIRE PROTECTION DISTRICT	LAKE VILLA TOWNSHIP							
				ROADWAY	SN 049-0610	100% COUNTY SN	TRAF SIG PR US 45 GRASS LAKE	TRAF SIG EX US 45 GRASS LAKE	80% COUNTY 20% LOCAL	80% COUNTY 20% LOCAL	80% COUNTY 20% LOCAL	100% LOCAL	TRAFFIC SIGNAL EVP	80% COUNTY 20% LOCAL							
				0001	0008	0008	0021	0021	0028	0028	0028	0021	0028								
* D2002960	EVERGREEN, PINUS STROBUS (EASTERN WHITE PINE), 5' HEIGHT, BALLED AND BURLAPPED	EACH	7	7																	
* D2002972	EVERGREEN, PINUS STROBUS (EASTERN WHITE PINE), 6' HEIGHT, BALLED AND BURLAPPED	EACH	7	7																	
* D2002984	EVERGREEN, PINUS STROBUS (EASTERN WHITE PINE), 7' HEIGHT, BALLED AND BURLAPPED	EACH	7	7																	
* K0013060	PERENNIAL PLANTS, SEDGE MEADOW TYPE, 2" DIAMETER BY 4" DEEP PLUG	UNIT	34.41	34.41																	
* K0029624	WEED CONTROL, TEASEL	GALLON	1	1																	
* K0029632	WEED CONTROL, NON-SELECTIVE AND NON-RESIDUAL	GALLON	40	40																	
* K0029634	WEED CONTROL, PRE-EMERGENT GRANULAR HERBICIDE	POUND	8	8																	
* K0013030	PERENNIAL PLANTS, WETLAND TYPE, 2" DIAMETER BY 4" DEEP PLUG	UNIT	22.77	22.77																	
* K1005428	SEEDING, SEDGE MEADOW MIX	ACRE	1.2	1.2																	
* K1005863	TREE ROOT PRUNING	EACH	20	20																	
X0322128	MEMBRANE WATERPROOFING FOR BURIED STRUCTURES	SO YD	735			575	160														
X0322463	CONNECTION TO EXISTING SEWER	EACH	13	13																	
X0322917	PROPOSED STORM SEWER CONNECTION TO EXISTING MANHOLE	EACH	1	1																	
X0323160	VIDEO INSPECTION OF STORM SEWER	FOOT	985	985																	
* X0324079	EXISTING FIELD TILE REMOVAL	FOOT	1,276	1,276																	
* X0324085	EMERGENCY VEHICLE PRIORITY SYSTEM LINE SENSOR CABLE, NO. 20 3/C	FOOT	927					727	200												

* SPECIALTY ITEMS

USER NAME = 35361	DESIGNED BN	REVISED
DRAWN BN	REVISED	
PLOT SCALE = 1:8000 "/ in.	CHECKED FZ	REVISED
PLOT DATE = 12/7/2017	DATE 02/02/2017	REVISED

STATE OF ILLINOIS
 DEPARTMENT OF TRANSPORTATION

SUMMARY OF QUANTITIES			
SCALE:	SHEET	OF SHEETS	STA. TO STA.

F.A.P. RTE. 344	SECTION 39 R	COUNTY LAKE	TOTAL SHEETS 510	SHEET NO. 28
CONTRACT NO. 60T75				(ILLINOIS) FED. AID PROJECT

REV 4-16-18

URBAN

CONSTRUCTION CODE
 LAKE COUNTY
 LAKE CO FOREST PD
 OLD MILL CREEK
 LINDENHURST
 LAKE CO FIRE PROTECTION DISTRICT
 LAKE VILLA TOWNSHIP
 100% COUNTY
 80% COUNTY 20% LOCAL
 80% COUNTY 20% LOCAL
 80% COUNTY 20% LOCAL
 100% LOCAL
 80% COUNTY 20% LOCAL

CODE NO.	ITEM	UNIT	TOTAL QUANTITY	CONSTRUCTION CODE										
				ROADWAY	SN 049-0610	049-0006 SN 049-0611 049-0607	TRAF SIG PR US 45' PR GRASS LAKE	TRAF SIG EX US 45' PR GRASS LAKE	SIDEWALK & PATH	SIDEWALK & PATH	SIDEWALK & PATH	TRAFFIC SIGNAL EVP	SIDEWALK	
				0001	0008	0008	0021	0021	0028	0028	0028	0021	0028	
Z0007606	BUILDING REMOVAL NO. 6	L SUM	1	1										
Z0007607	BUILDING REMOVAL NO. 7	L SUM	1	1										
Z0007608	BUILDING REMOVAL NO. 8	LSUM	1	1										
Z0010600	CLEANING DRAINAGE SYSTEM	FOOT	985	985										
Z0013798	CONSTRUCTION LAYOUT	L SUM	1	1										
Z0015500	DEBRIS REMOVAL	L SUM	1	1										
Z0045050	PRESSURE CONNECTION 12" X 10"	EACH	1	1										
Z0045100	PRESSURE CONNECTION - 12" X 12"	EACH	1	1										
Z0056612	STORM SEWER (WATER MAIN REQUIREMENTS) 18 INCH	FOOT	148	148										
Z0056900	SANITARY SEWER 8"	FOOT	67	67										
Z0062456	TEMPORARY PAVEMENT	SO YD	7,143	7,143										
Z0073345	SLEEPER SLAB	FOOT	565	565										
Z0073510	TEMPORARY TRAFFIC SIGNAL TIMING	EACH	1				1							
Z0076604	TRAINEE'S - TRAINING PROGRAM GRADUATE	HOUR	1000	1000										

* SPECIALTY ITEMS Ø 0042

USER NAME = 35361	DESIGNED BN	REVISED
DRAWN BN	CHECKED FZ	REVISED
DATE 02/02/2017		REVISED

STATE OF ILLINOIS
 DEPARTMENT OF TRANSPORTATION

SUMMARY OF QUANTITIES			
SCALE:	SHEET	OF SHEETS	STA. TO STA.

F.A.P. RTE. 344	SECTION 39 R	COUNTY LAKE	TOTAL SHEETS 510	SHEET NO. 31B
CONTRACT NO. 60775				
ILLINOIS FED. AID PROJECT				

PLAN	DATE
SURVEYED	BY
PLOTTED	
CHECKED	
DATE	
NO.	

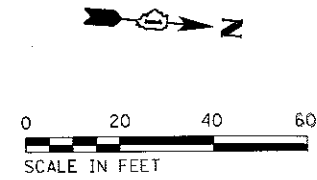
PROFILE	DATE
SURVEYED	BY
PLOTTED	
CHECKED	
DATE	
NO.	

FILE NAME = p:\1\proj\2017\170202\170202.dwg - Design\170202\Roadway\Sheet\170202.dwg

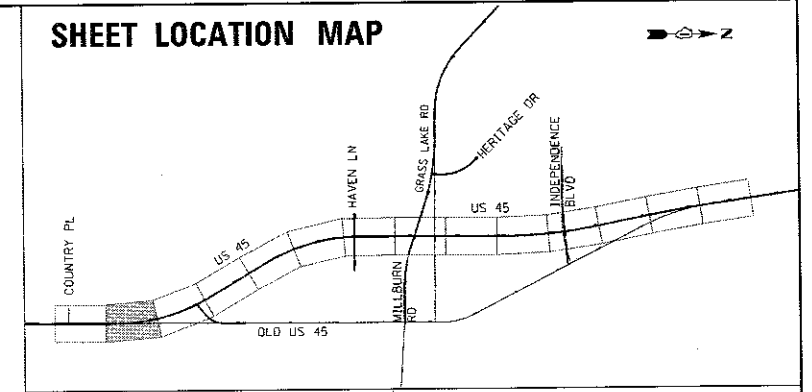
REV 4-16-18

JOINTING LEGEND

- XXX.XX PROPOSED PAVEMENT ELEVATION
- ① LONGITUDINAL CONSTRUCTION JOINT WITH NO. 6 TIE BARS AT 24" CTS.
 - ② LONGITUDINAL SAWED JOINT WITH NO. 6 TIE BARS AT 36" CTS.
 - ③ TRANSVERSE CONTRACTION JOINT WITH 18" LONG DOWEL BARS AT 12" CTS.
 - ④ PAVEMENT SEPARATION JOINT

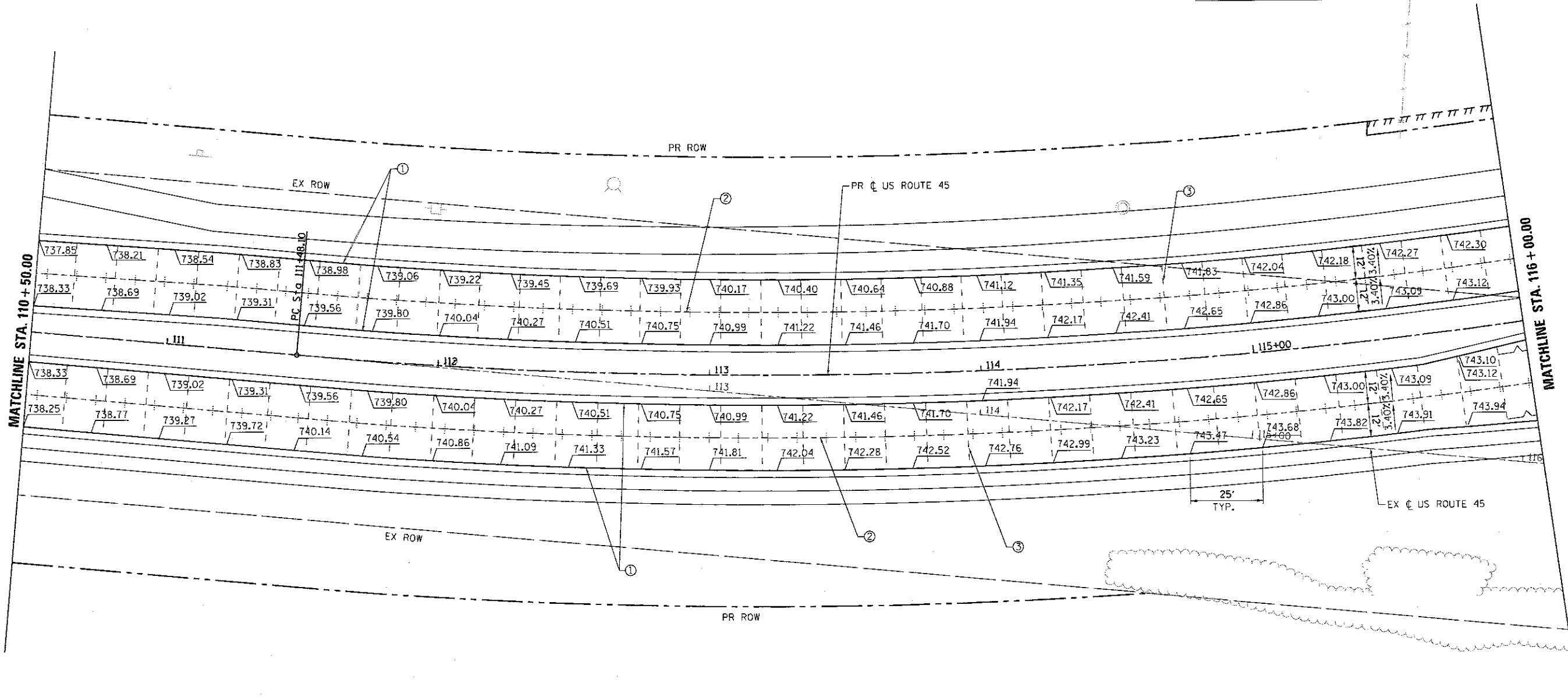


SHEET LOCATION MAP



DATE	
BY	
PLAN	
NO.	
NOTE BOOK	
NO.	
DATE	
BY	
PROFILE	
NO.	
NOTE BOOK	
NO.	
DATE	
BY	

DATE	
BY	
PROFILE	
NO.	
NOTE BOOK	
NO.	
DATE	
BY	



JOINTING & ELEVATION NOTES

1. TRANSVERSE DOWELED JOINTS SHALL BE SPACED AT 15' O.C. (TYP.) IN THE PORTLAND CEMENT CONCRETE PAVEMENT, 9 1/2" (JOINTED) UNLESS OTHERWISE NOTED. JOINT LAYOUT MAY BE MODIFIED (+/- 3' PER STANDARD 420101 & 420106) UPON APPROVAL BY THE ENGINEER TO INCORPORATE CHANGES DURING CONSTRUCTION. ROADWAY JOINTS SHALL LINE UP WITH ANCHORAGE SLAB JOINTS WHERE APPLICABLE.
2. REINFORCING STEEL IS NOT SHOWN ALONG EVERY JOINT ON THE PLAN, BUT IS INTENDED TO BE PLACED ALONG EACH JOINT AS REQUIRED.
3. REFERENCE IDOT STANDARD DETAILS 420001, 420101, 420106, 420111, AND 606001.
4. FOR SUPERELEVATION TABLES SEE SHEET NO. 254 TO 256.
5. ALL PAVEMENT JOINTS TIE BARS TO BE EPOXY COATED.
6. LONGITUDINAL CONSTRUCTION JOINT LINE STYLE NOT SHOWN ADJACENT TO CURB AND GUTTER FOR CLARITY.

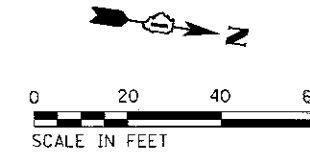
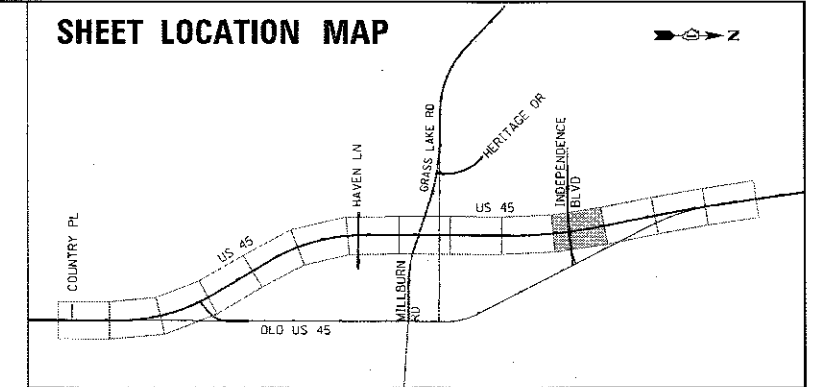
USER NAME = 35361	DESIGNED FZ	REVISED -	STATE OF ILLINOIS DEPARTMENT OF TRANSPORTATION	JOINTING AND ELEVATION PLAN US ROUTE 45		F.A.P. RTE. 344	SECTION 39 R	COUNTY LAKE	TOTAL SHEETS 510	SHEET NO. 243	
PLOT SCALE = 40,0000' / in.	DRAWN FZ	REVISED		SCALE: 1"=20'	SHEET 2	OF 14 SHEETS	STA. 113+00	TO STA. 125+00	CONTRACT NO. 60T75		
PLOT DATE = 4/6/2018	CHECKED MO	REVISED		ILLINOIS FED. AID PROJECT							
	DATE 04/05/2018	REVISED									

REV 4-16-18

JOINTING LEGEND

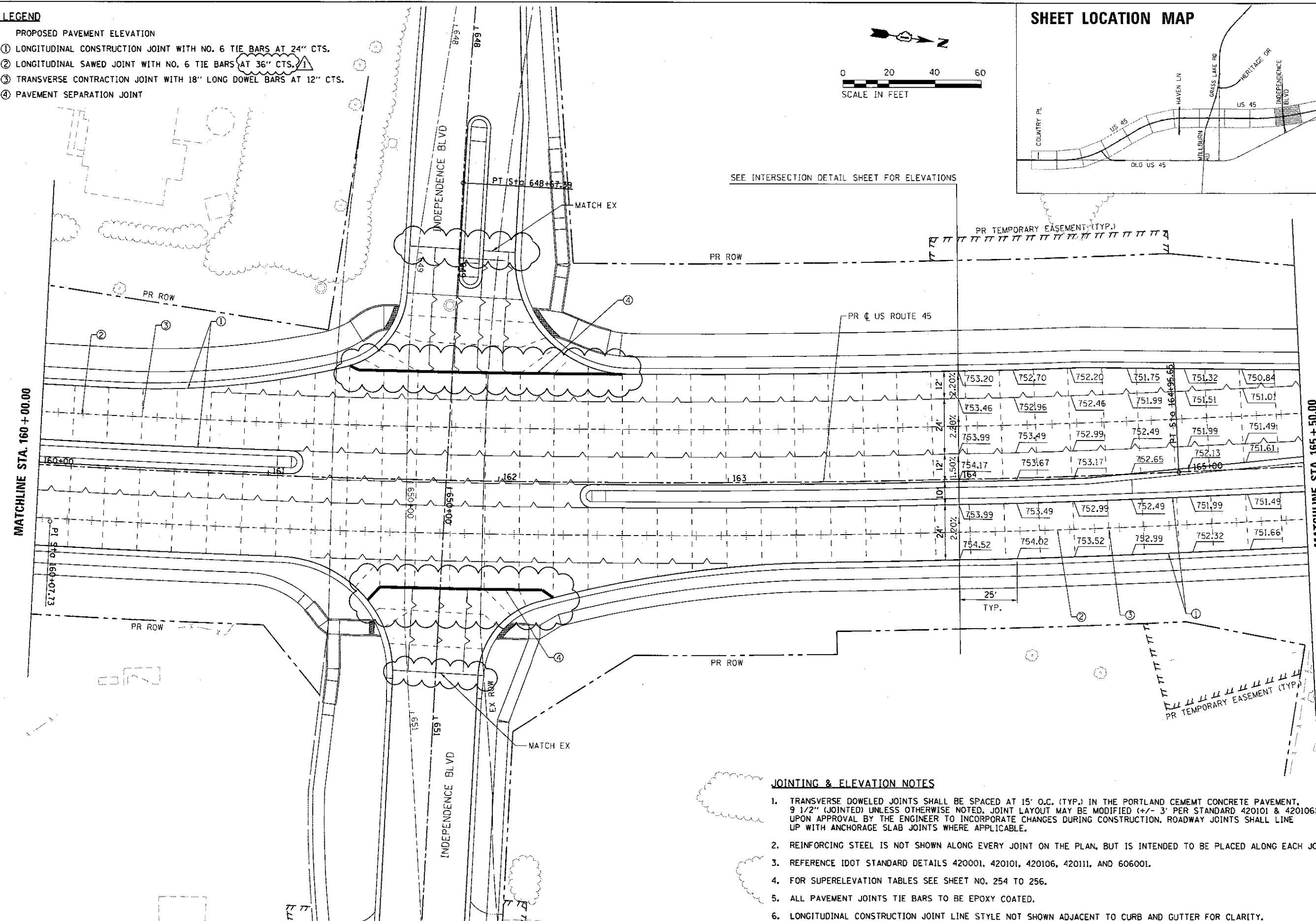
- XXX.XX PROPOSED PAVEMENT ELEVATION
- ① LONGITUDINAL CONSTRUCTION JOINT WITH NO. 6 TIE BARS AT 24" CTS.
 - ② LONGITUDINAL SAWED JOINT WITH NO. 6 TIE BARS AT 36" CTS.
 - ③ TRANSVERSE CONTRACTION JOINT WITH 18" LONG DOWEL BARS AT 12" CTS.
 - ④ PAVEMENT SEPARATION JOINT

SHEET LOCATION MAP



PLAN	DATE
BY	
DESIGNED	
DRAWN	
CHECKED	
NO.	
DATE	

PROFILE	DATE
BY	
DESIGNED	
DRAWN	
CHECKED	
NO.	
DATE	



12'	2.20%	753.20	752.70	752.20	751.75	751.32	750.84
24'	2.40%	753.46	752.96	752.46	751.99	751.51	751.01
12'	1.50%	753.99	753.49	752.99	752.49	751.99	751.49
10'	2.20%	754.17	753.67	753.17	752.65	752.13	751.61
24'	2.20%	753.99	753.49	752.99	752.49	751.99	751.49
		754.52	754.02	753.52	752.99	752.32	751.66

JOINTING & ELEVATION NOTES

- TRANSVERSE DOWELED JOINTS SHALL BE SPACED AT 15' O.C. (TYP.) IN THE PORTLAND CEMENT CONCRETE PAVEMENT, 9 1/2" (JOINTED) UNLESS OTHERWISE NOTED. JOINT LAYOUT MAY BE MODIFIED (+/- 3' PER STANDARD 420101 & 420106) UPON APPROVAL BY THE ENGINEER TO INCORPORATE CHANGES DURING CONSTRUCTION. ROADWAY JOINTS SHALL LINE UP WITH ANCHORAGE SLAB JOINTS WHERE APPLICABLE.
- REINFORCING STEEL IS NOT SHOWN ALONG EVERY JOINT ON THE PLAN, BUT IS INTENDED TO BE PLACED ALONG EACH JOINT AS REQUIRED.
- REFERENCE IDOT STANDARD DETAILS 420001, 420101, 420106, 420111, AND 606001.
- FOR SUPERELEVATION TABLES SEE SHEET NO. 254 TO 256.
- ALL PAVEMENT JOINTS TIE BARS TO BE EPOXY COATED.
- LONGITUDINAL CONSTRUCTION JOINT LINE STYLE NOT SHOWN ADJACENT TO CURB AND GUTTER FOR CLARITY.

USER NAME = 95361	DESIGNED FZ	REVISED
	DRAWN FZ	REVISED
PLOT SCALE = 48.0000' / 1" =	CHECKED MO	REVISED
PLOT DATE = 4/8/2018	DATE 04/05/2018	REVISED

**STATE OF ILLINOIS
DEPARTMENT OF TRANSPORTATION**

**JOINTING AND ELEVATION PLAN
US ROUTE 45**
SCALE: 1"=20' SHEET 11 OF 14 SHEETS STA. TO STA.

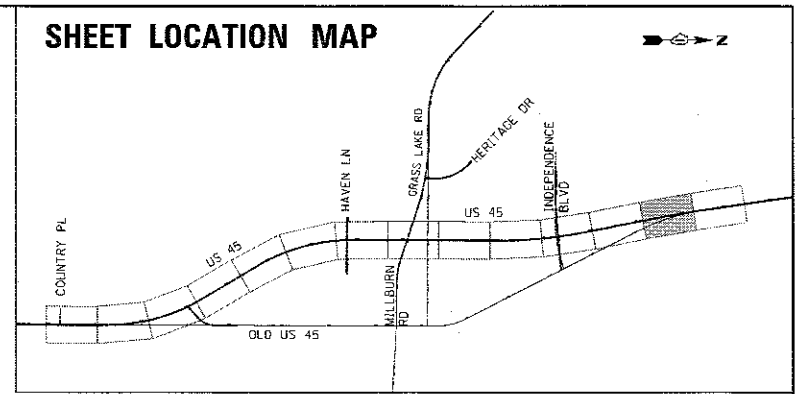
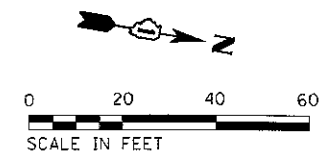
F.A.P. RTE. 344	SECTION 39 R	COUNTY LAKE	TOTAL SHEETS 510	SHEET NO. 252
ILLINOIS FED. AID PROJECT			CONTRACT NO. 60775	

REV 4-16-18

JOINTING LEGEND

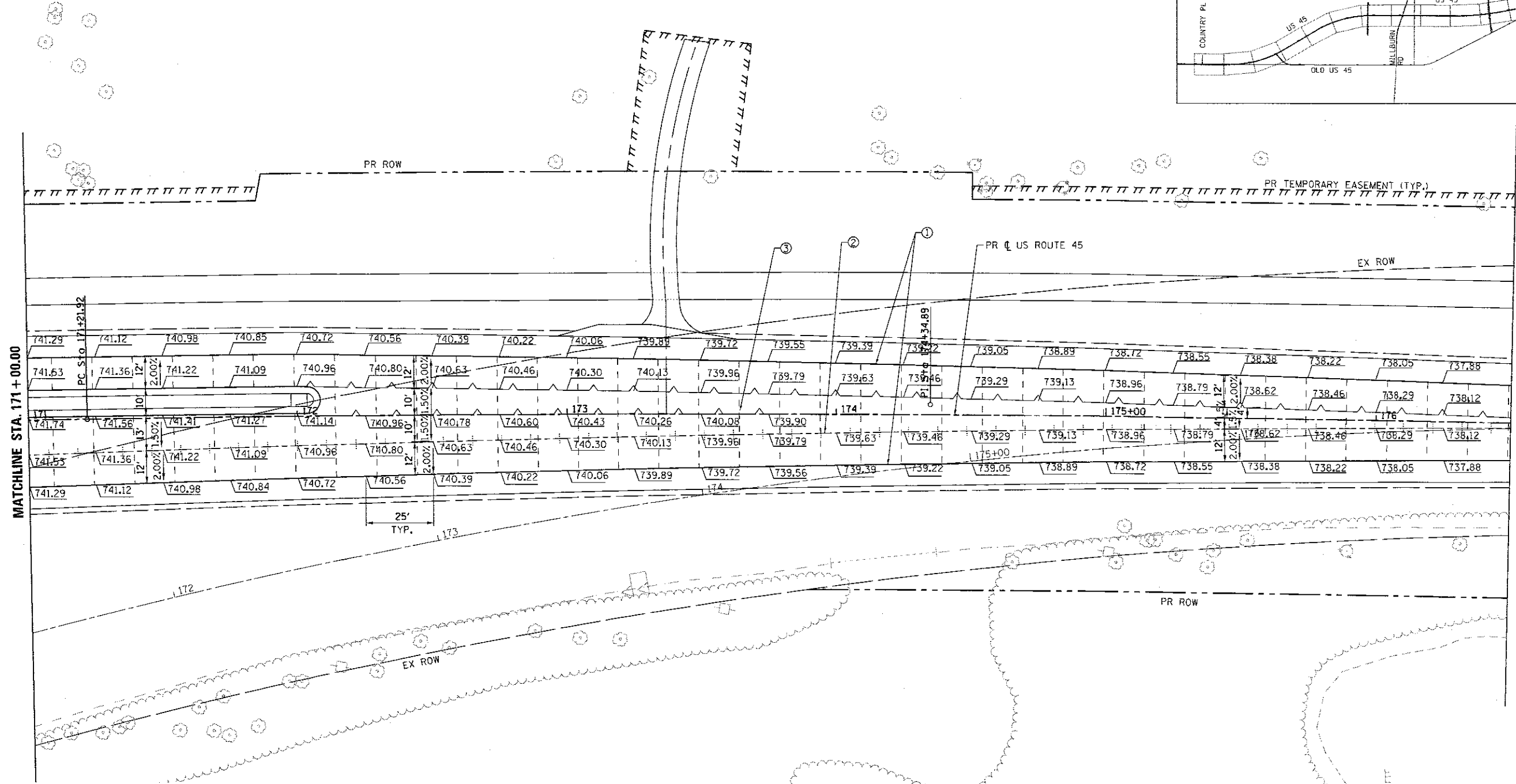
- XXX.XX PROPOSED PAVEMENT ELEVATION
- ① LONGITUDINAL CONSTRUCTION JOINT WITH NO. 6 TIE BARS AT 24" CTS.
- ② LONGITUDINAL SAWED JOINT WITH NO. 6 TIE BARS AT 36" CTS.
- ③ TRANSVERSE CONTRACTION JOINT WITH 18" LONG DOWEL BARS AT 12" CTS.
- ④ PAVEMENT SEPARATION JOINT

SHEET LOCATION MAP



DATE	
BY	
DESIGNED	
DRAWN	
CHECKED	
IN CHARGE	
PROJECT NO.	
DATE	
BY	
DESIGNED	
DRAWN	
CHECKED	
IN CHARGE	
PROJECT NO.	

DATE	
BY	
DESIGNED	
DRAWN	
CHECKED	
IN CHARGE	
PROJECT NO.	
DATE	
BY	
DESIGNED	
DRAWN	
CHECKED	
IN CHARGE	
PROJECT NO.	



JOINTING & ELEVATION NOTES

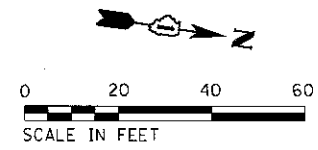
1. TRANSVERSE DOWELED JOINTS SHALL BE SPACED AT 15' O.C. (TYP.) IN THE PORTLAND CEMENT CONCRETE PAVEMENT, 9 1/2" (JOINTED) UNLESS OTHERWISE NOTED. JOINT LAYOUT MAY BE MODIFIED (+/- 3' PER STANDARD 420101 & 420106) UPON APPROVAL BY THE ENGINEER TO INCORPORATE CHANGES DURING CONSTRUCTION. ROADWAY JOINTS SHALL LINE UP WITH ANCHORAGE SLAB JOINTS WHERE APPLICABLE.
2. REINFORCING STEEL IS NOT SHOWN ALONG EVERY JOINT ON THE PLAN, BUT IS INTENDED TO BE PLACED ALONG EACH JOINT AS REQUIRED.
3. REFERENCE IDOT STANDARD DETAILS 420001, 420101, 420106, 420111, AND 606001.
4. FOR SUPERELEVATION TABLES SEE SHEET NO. 254 TO 256.
5. ALL PAVEMENT JOINTS TIE BARS TO BE EPOXY COATED.
6. LONGITUDINAL CONSTRUCTION JOINT LINE STYLE NOT SHOWN ADJACENT TO CURB AND GUTTER FOR CLARITY.

USER NAME = 35361	DESIGNED FZ	REVISED -	STATE OF ILLINOIS DEPARTMENT OF TRANSPORTATION	JOINTING AND ELEVATION PLAN US ROUTE 45		F.A.P. RTE. 344	SECTION 39 R	COUNTY LAKE	TOTAL SHEETS 510	SHEET NO. 294	
PLOT SCALE = 40.0000' / in.	CHECKED MD	REVISED		SCALE: 1"=20'	SHEET 13 OF 14 SHEETS	STA. TO STA.	CONTRACT NO. 60T75		ILLINOIS FED. AID PROJECT		
PLOT DATE = 4/6/2018	DATE 04/05/2018	REVISED									

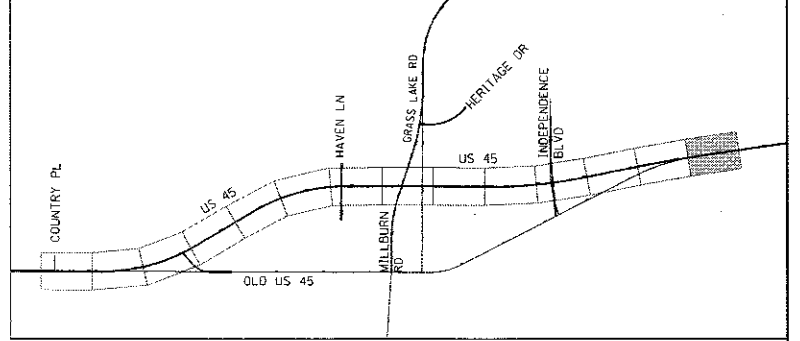
REV 4-16-18

JOINTING LEGEND

- XXX.XX PROPOSED PAVEMENT ELEVATION
- ① LONGITUDINAL CONSTRUCTION JOINT WITH NO. 6 TIE BARS AT 24" CTS.
 - ② LONGITUDINAL SAWED JOINT WITH NO. 6 TIE BARS AT 36" CTS.
 - ③ TRANSVERSE CONTRACTION JOINT WITH 18" LONG DWEL BARS AT 12" CTS.
 - ④ PAVEMENT SEPARATION JOINT



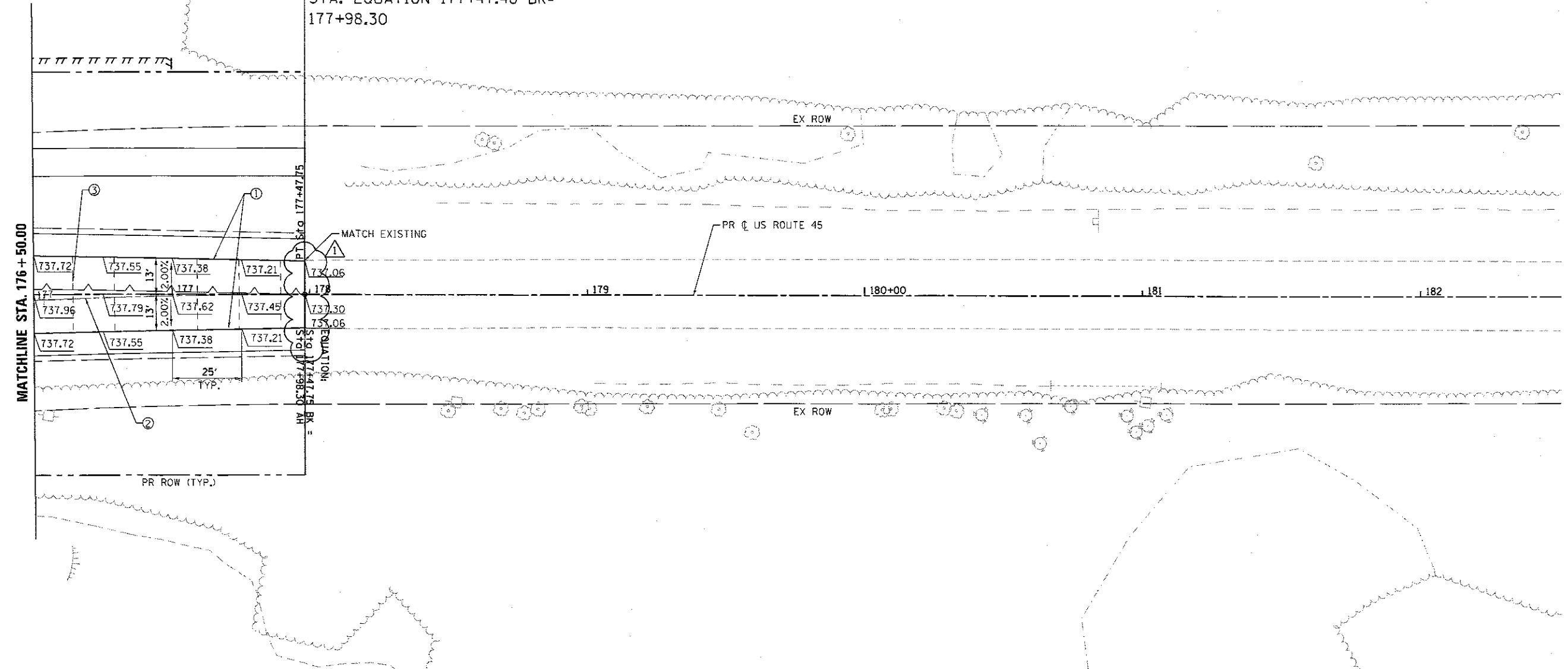
SHEET LOCATION MAP



DATE	
BY	
PLAN	
SURVEYED	
PLOTTED	
PRINTED	
NOTED	
NO.	
NOTE BOOK	
NO.	
NO. OF PAGES	
NO. OF SHEETS	
NO. OF JOINTS	
NO. OF TIE BARS	
NO. OF DWEL BARS	
NO. OF SEPARATION JOINTS	
NO. OF CONSTRUCTION JOINTS	
NO. OF SAWED JOINTS	
NO. OF CONTRACTION JOINTS	
NO. OF SEPARATION JOINTS	
NO. OF CONSTRUCTION JOINTS	
NO. OF SAWED JOINTS	
NO. OF CONTRACTION JOINTS	
NO. OF SEPARATION JOINTS	

DATE	
BY	
PROFILE	
SURVEYED	
PLOTTED	
PRINTED	
NOTED	
NO.	
NOTE BOOK	
NO.	
NO. OF PAGES	
NO. OF SHEETS	
NO. OF JOINTS	
NO. OF TIE BARS	
NO. OF DWEL BARS	
NO. OF SEPARATION JOINTS	
NO. OF CONSTRUCTION JOINTS	
NO. OF SAWED JOINTS	
NO. OF CONTRACTION JOINTS	
NO. OF SEPARATION JOINTS	
NO. OF CONSTRUCTION JOINTS	
NO. OF SAWED JOINTS	
NO. OF CONTRACTION JOINTS	
NO. OF SEPARATION JOINTS	

END IMPROVEMENTS
 US ROUTE 45
 STA. EQUATION 177+47.48 BK=
 177+98.30



JOINTING & ELEVATION NOTES

1. TRANSVERSE DOWELED JOINTS SHALL BE SPACED AT 15' O.C. (TYP.) IN THE PORTLAND CEMENT CONCRETE PAVEMENT, 9 1/2" (JOINTED) UNLESS OTHERWISE NOTED. JOINT LAYOUT MAY BE MODIFIED (+/- 3' PER STANDARD 420101 & 420106) UPON APPROVAL BY THE ENGINEER TO INCORPORATE CHANGES DURING CONSTRUCTION. ROADWAY JOINTS SHALL LINE UP WITH ANCHORAGE SLAB JOINTS WHERE APPLICABLE.
2. REINFORCING STEEL IS NOT SHOWN ALONG EVERY JOINT ON THE PLAN, BUT IS INTENDED TO BE PLACED ALONG EACH JOINT AS REQUIRED.
3. REFERENCE IDOT STANDARD DETAILS 420001, 420101, 420106, 420111, AND 606001.
4. FOR SUPERELEVATION TABLES SEE SHEET NO. 254 TO 256.
5. ALL PAVEMENT JOINTS TIE BARS TO BE EPOXY COATED.
6. LONGITUDINAL CONSTRUCTION JOINT LINE STYLE NOT SHOWN ADJACENT TO CURB AND GUTTER FOR CLARITY.

USER NAME = 25361	DESIGNED FZ	REVISED
	DRAWN FZ	REVISED
PLOT SCALE = 48.0000' / 1" L.P.	CHECKED MO	REVISED
PLOT DATE = 4/8/2018	DATE 04/05/2018	REVISED

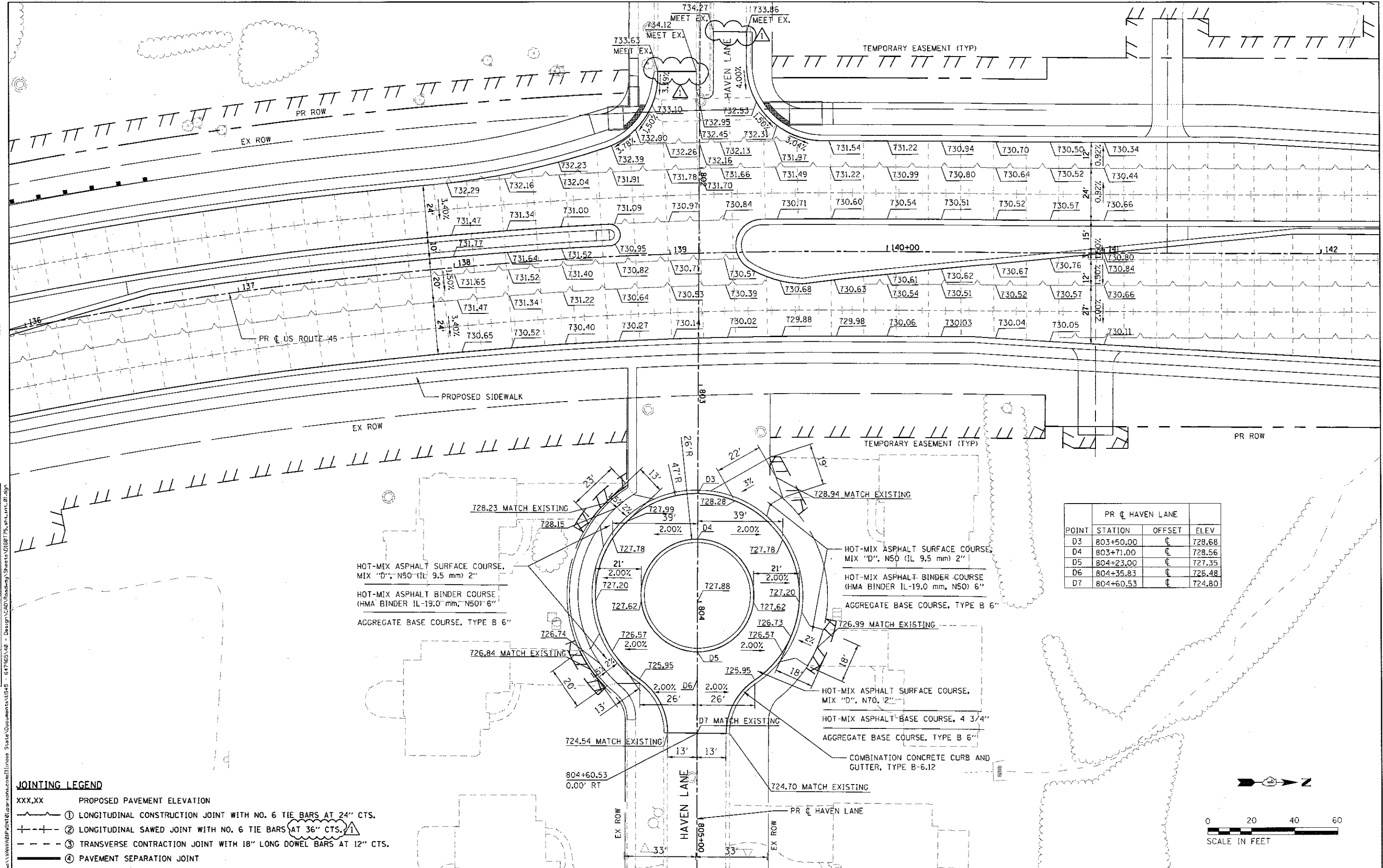
**STATE OF ILLINOIS
 DEPARTMENT OF TRANSPORTATION**

JOINTING AND ELEVATION PLAN US ROUTE 45		F.A.P. RTE. 344	SECTION 39 R	COUNTY LAKE	TOTAL SHEETS 510	SHEET NO. 255
SCALE: 1"=20'		SHEET 14 OF 14 SHEETS		STA. TO STA.	CONTRACT NO. 60T75	
ILLINOIS FED. AID PROJECT						

REV 4-16-18

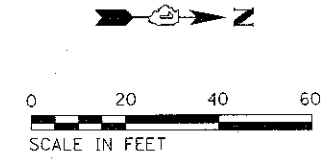
DATE	
BY	
PLAN	
SUBMITTED	
ALIGNED	
CHECKED	
NOTE BOOK	
NO.	
FILE NAME	

DATE	
BY	
PROFILE	
SURVEYED	
GRADES	
CHECKED	
NOTE BOOK	
NO.	
FILE NAME	



PR & HAVEN LANE			
POINT	STATION	OFFSET	ELEV
D3	803+50.00	0	728.68
D4	803+71.00	0	728.56
D5	804+23.00	0	727.35
D6	804+35.83	0	726.48
D7	804+60.53	0	724.80

- JOINTING LEGEND**
- XXX.XX PROPOSED PAVEMENT ELEVATION
 - ① LONGITUDINAL CONSTRUCTION JOINT WITH NO. 6 TIE BARS AT 24" CTS.
 - ② LONGITUDINAL SAWS JOINT WITH NO. 6 TIE BARS AT 36" CTS.
 - ③ TRANSVERSE CONTRACTION JOINT WITH 18" LONG DOWEL BARS AT 12" CTS.
 - ④ PAVEMENT SEPARATION JOINT



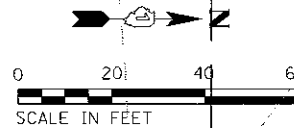
USER NAME = 35361	DESIGNED FZ	REVISED	STATE OF ILLINOIS DEPARTMENT OF TRANSPORTATION	INTERSECTION LAYOUT DETAILS		F.A.P. RITE 344	SECTION 39 R	COUNTY LAKE	TOTAL SHEETS 510	SHEET NO. 256
PLOT SCALE = 48,0000' / 1"	DRAWN FZ	REVISED		SCALE: 1"=20'	SHEET 1 OF 5 SHEETS	STA. TO STA.	CONTRACT NO. 60T75		ILLINOIS FED. AID PROJECT	
PLOT DATE = 4/6/2018	CHECKED MD	REVISED								
	DATE 04/05/2018	REVISED								

REV 4-16-18

JOINTING LEGEND

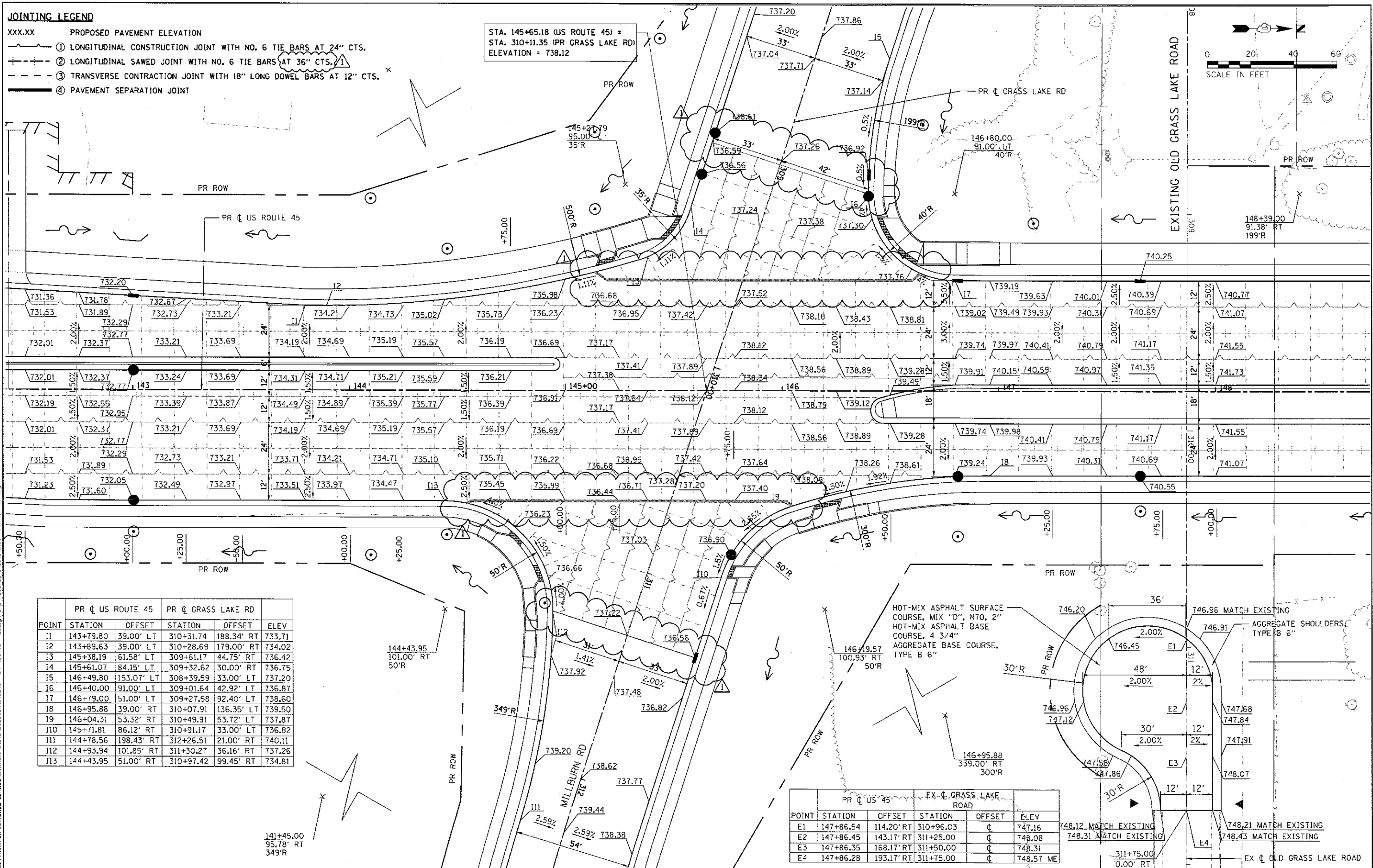
- XXX.XX PROPOSED PAVEMENT ELEVATION
- ① LONGITUDINAL CONSTRUCTION JOINT WITH NO. 6 TIE BARS AT 24" CTS.
- ② LONGITUDINAL SAWED JOINT WITH NO. 6 TIE BARS AT 36" CTS.
- ③ TRANSVERSE CONTRACTION JOINT WITH 18" LONG DOWEL BARS AT 12" CTS.
- ④ PAVEMENT SEPARATION JOINT

STA. 145+65.18 (US ROUTE 45) =
STA. 310+11.35 (PR GRASS LAKE RD)
ELEVATION = 738.12



DATE	
BY	
PROJECT NO.	
DATE	
BY	
PROJECT NO.	
DATE	
BY	
PROJECT NO.	

DATE	
BY	
PROJECT NO.	
DATE	
BY	
PROJECT NO.	
DATE	
BY	
PROJECT NO.	



POINT	PR US ROUTE 45		PR GRASS LAKE RD		ELEV
	STATION	OFFSET	STATION	OFFSET	
I1	143+79.80	39.00' LT	310+31.74	188.34' RT	733.71
I2	143+89.63	39.00' LT	310+28.69	179.00' RT	734.02
I3	145+38.19	61.58' LT	309+61.17	44.75' RT	736.42
I4	145+61.07	84.15' LT	309+32.62	30.00' RT	736.75
I5	146+49.80	153.07' LT	308+39.59	33.00' LT	737.20
I6	146+40.00	91.00' LT	309+01.64	42.92' LT	736.87
I7	146+79.00	51.00' LT	309+27.58	92.40' LT	738.60
I8	146+95.88	39.00' RT	310+07.91	136.35' LT	739.50
I9	146+04.31	53.32' RT	310+49.91	53.72' LT	737.87
I10	145+71.81	86.12' RT	310+91.17	33.00' LT	736.82
I11	144+78.56	198.43' RT	312+26.51	21.00' RT	740.11
I12	144+93.94	101.85' RT	311+30.27	36.16' RT	737.26
I13	144+43.95	51.00' RT	310+97.42	99.45' RT	734.81

HOT-MIX ASPHALT SURFACE COURSE, MIX "D", N70, 2"
HOT-MIX ASPHALT BASE COURSE, 4 3/4"
AGGREGATE BASE COURSE, TYPE B 6"

POINT	PR US 45		EX GRASS LAKE ROAD		ELEV
	STATION	OFFSET	STATION	OFFSET	
E1	147+86.54	114.20' RT	310+96.03	C	747.16
E2	147+86.45	143.17' RT	311+25.00	C	748.08
E3	147+86.35	168.17' RT	311+50.00	C	748.31
E4	147+86.28	193.17' RT	311+75.00	C	748.57 ME

USER NAME = 36361	DESIGNED	REVISED
	DRAWN SO	REVISED
	CHECKED BN	REVISED
	DATE 04/05/2018	REVISED

**STATE OF ILLINOIS
DEPARTMENT OF TRANSPORTATION**

INTERSECTION LAYOUT DETAILS

SCALE: 1"=20' SHEET 4 OF 5 SHEETS STA. TO STA.

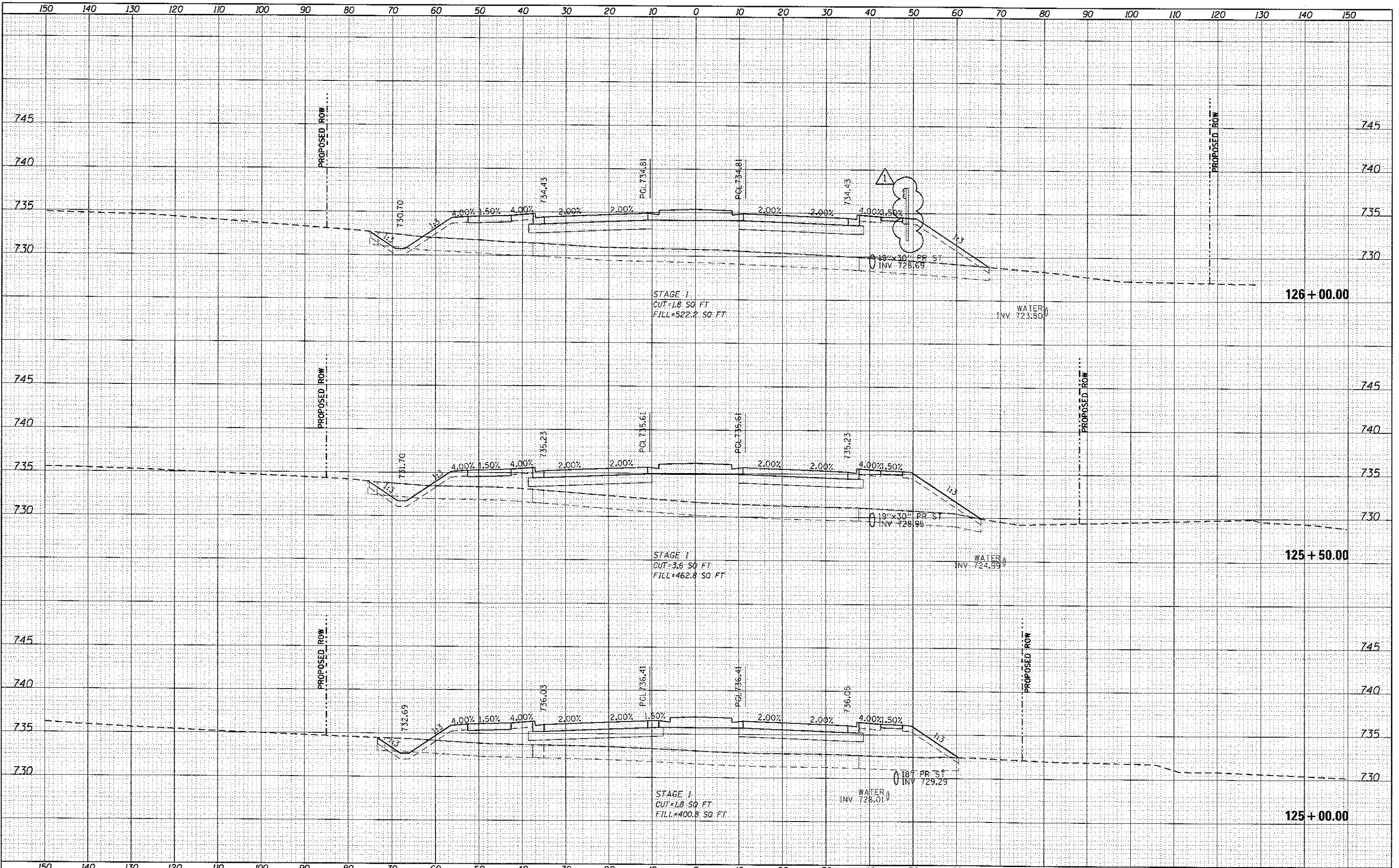
F.A.P. RTE. 344	SECTION 39 R	COUNTY LAKE	TOTAL SHEETS 510	SHEET NO. 259
			CONTRACT NO. 60T75	
ILLINOIS FED. AID PROJECT				

REV 4-16-18

DATE	
BY	
DESIGNED	
DRAWN	
CHECKED	
DATE	
NO.	
FILE NAME	

DATE	
BY	
DESIGNED	
DRAWN	
CHECKED	
DATE	
NO.	
FILE NAME	

FILE NAME: P:\V\W\416\11010\11010.dwg
 ORIGINAL SURVEY NO. 11010
 SUBMITTED SURVEY NO. 11010
 PLOTTED SURVEY NO. 11010
 TEMPLATE SURVEY NO. 11010
 AREAS CHECKED SURVEY NO. 11010
 DESIGN: 04/16/2018
 DRAWN: JC
 CHECKED: JC
 DATE: 04/16/2018



USER NAME - 35361	DESIGNED - FZ	REVISED -
PLOT SCALE = 20.0000' / in.	DRAWN - SQ	REVISED -
PLOT DATE = 4/16/2018	CHECKED - JC	REVISED -
	DATE - 04/16/2018	REVISED -

STATE OF ILLINOIS
 DEPARTMENT OF TRANSPORTATION

PROPOSED CROSS SECTIONS
 US 45 MAINLINE
 SCALE: SHEET OF SHEETS STA. 125+00.00 TO STA. 126+00.00

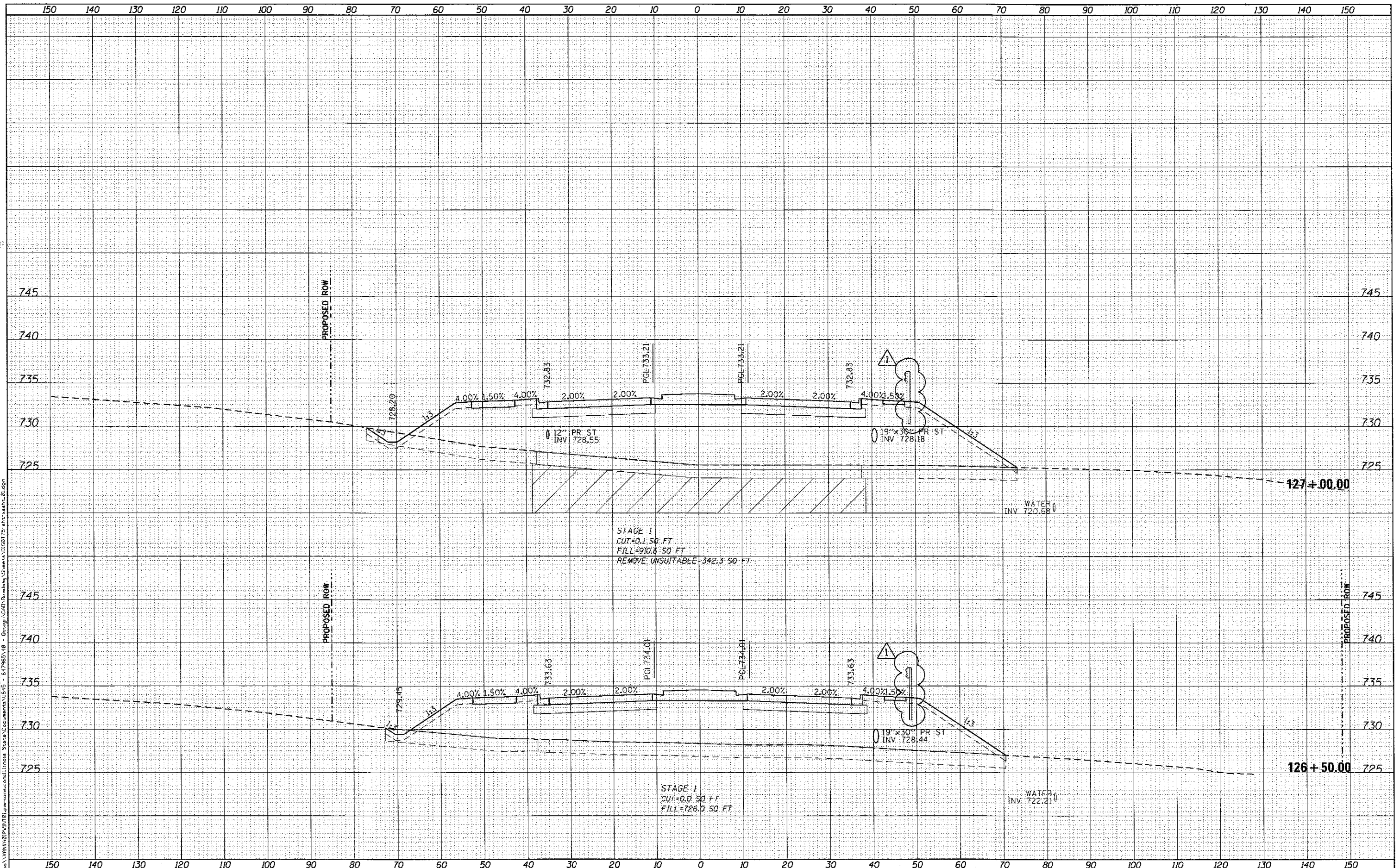
F.A. RTE.	SECTION	COUNTY	TOTAL SHEETS	SHEET NO.
344	39 R	LAKE	510	409
CONTRACT NO. 60T75			ILLINOIS FED. AID PROJECT	

REV 4-16-18

DATE	
BY	
FINAL SURVEY	
PLOTTED	
TEMPLATE	
NOTE BOOK	
AREAS CHECKED	

DATE	
BY	
ORIGINAL SURVEY	
PLOTTED	
TEMPLATE	
NOTE BOOK	
AREAS CHECKED	

FILE NAME - p:\VANNI\PRINT\Ileparsona.com\Illinois State Documents\UG45 - 847985V-10 - Design\CAD\Roadway\Sheets\0168775-sh-12-18-18.dwg



USER NAME = 39361	DESIGNED - FZ	REVISED -
PLOT SCALE = 20,000' / 1"	DRAWN - SG	REVISED -
PLOT DATE = 4/16/2018	CHECKED - JC	REVISED -
	DATE - 04/16/2018	REVISED -

STATE OF ILLINOIS
DEPARTMENT OF TRANSPORTATION

PROPOSED CROSS SECTIONS
US 45 MAINLINE

SCALE: SHEET OF SHEETS STA. 126+50.00 TO STA. 127+00.00

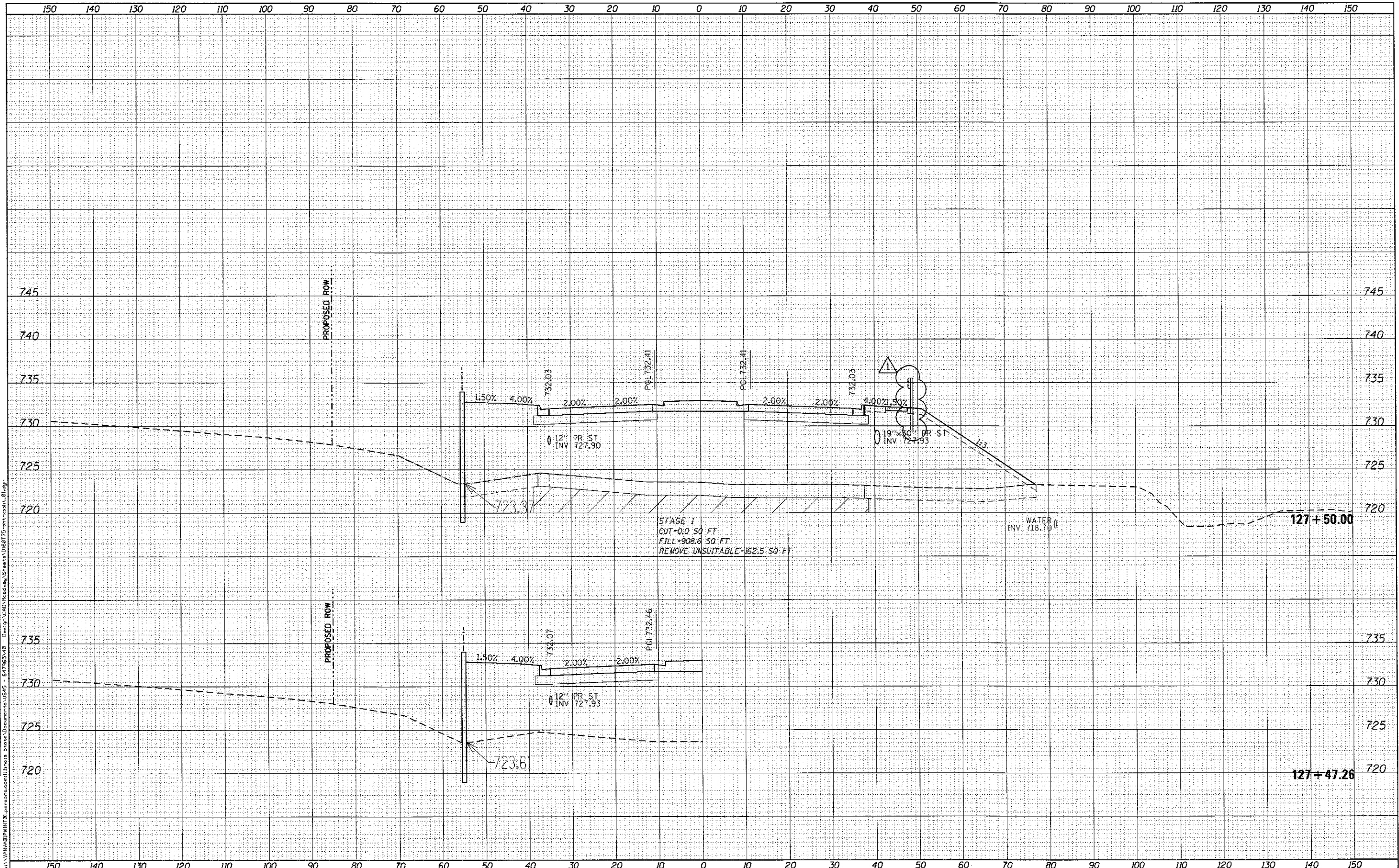
F.A. R.T.E. 344	SECTION 39 R	COUNTY LAKE	TOTAL SHEETS 510	SHEET NO. 410
			CONTRACT NO. 60T75	
ILLINOIS FED. AID PROJECT				

REV 4-16-18

DATE	
BY	
NO.	
ORIGINAL SURVEY	
NOTE BOOK	
AREAS CHECKED	
NO.	
FINAL SURVEY	
NOTE BOOK	
AREAS CHECKED	
NO.	

DATE	
BY	
NO.	
ORIGINAL SURVEY	
NOTE BOOK	
AREAS CHECKED	
NO.	
FINAL SURVEY	
NOTE BOOK	
AREAS CHECKED	
NO.	

FILE NAME = p:\1\VANPAG\PRINT0\personals\oml\Irois State Documents\US45 - 617963.vxd - Design\CAD\Roadway\Sheets\108175-ent-rsht.dwg



STAGE 1
 CUT=0.0 SQ. FT.
 FILL=908.6 SQ. FT.
 REMOVE UNSUITABLE=162.5 SQ. FT.

USER NAME = 35361	DESIGNED - FZ	REVISED -
PLOT SCALE = 20.0000' / 1"	DRAWN - SQ	REVISED -
PLOT DATE = 4/16/2018	CHECKED - JC	REVISED -
	DATE - 04/16/2018	REVISED -

STATE OF ILLINOIS
 DEPARTMENT OF TRANSPORTATION

PROPOSED CROSS SECTIONS
 US 45 MAINLINE
 SCALE: SHEET OF SHEETS STA. 127+47.26 TO STA. 127+50.00

F.A. RTE. 344	SECTION 39 R	COUNTY LAKE	TOTAL SHEETS 510	SHEET NO. 411
			CONTRACT NO. 60T75	
ILLINOIS FED. AID PROJECT				

REV 4-16-18

