

F.A.U. RTE.	SECTION	COUNTY	TOTAL SHEETS	SHEET NO.
8874	16-00109-00-PV	MADISON	22	1
FEDERAL AID PROJECT ILLINOIS		CONTRACT NO. 97670		

04-27-2018 LETTING ITEM 212

INDEX OF SHEETS

SHEET NO.	ITEM
1	COVER SHEET
2	GENERAL NOTES & COMMITMENTS
3-5	SUMMARY OF QUANTITIES
6-7	TYPICAL SECTIONS
8-9	SCHEDULES OF QUANTITIES
10	PLAN AND PROFILE SHEET
11	EROSION CONTROL SHEET
12	DRAINAGE SHEET
13	REMOVAL SHEET
14	INTERSECTION DETAILS
15	PAVEMENT MARKING & SIGNING SHEET
16-18	TRAFFIC SIGNAL SHEETS
19	DITCH GRADING DETAIL
20	CONSTRUCTION DETAILS
21-22	CROSS SECTION SHEETS

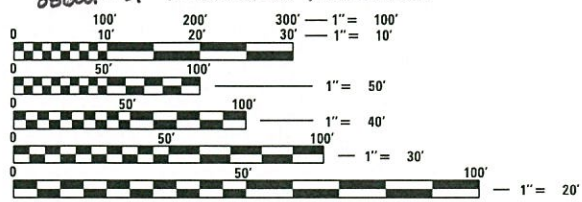
STATE OF ILLINOIS
DEPARTMENT OF TRANSPORTATION
PLAN FOR PROPOSED

CMAQ FUNDS
CITY OF EDWARDSVILLE
CENTER GROVE ROAD INTERSECTION IMPROVEMENTS
FAU 8874
SECTION 16-00109-00-PV
MADISON COUNTY
PROJECT NO. GN3F(032)
JOB NO. C-98-334-16

HIGHWAY STANDARDS

000001-06	STANDARD SYMBOLS, ABBREVIATIONS AND PATTERNS
001001-02	AREAS OF REINFORCEMENT BARS
001006	DECIMAL OF AN INCH AND OF A FOOT
280001-07	TEMPORARY EROSION CONTROL SYSTEMS
420001-09	PAVEMENT JOINTS
420101-06	24' (7.2 m) JOINTED PCC PAVEMENT
424001-10	PERPENDICULAR CURB RAMPS FOR SIDEWALKS
542301-03	PRECAST REINFORCED CONCRETE FLARED END SECTION
602306-03	INLET - TYPE B
602401-04	MANHOLE TYPE A
602601-05	PRECAST REINFORCED CONCRETE FLAT SLAB TOP
602701-02	MANHOLE STEPS
604001-04	FRAME AND LIDS TYPE 1
606001-07	CONCRETE CURB TYPE B AND COMBINATION CONCRETE CURB AND GUTTER
701006-05	OFF-RD OPERATIONS, 2L, 2W 15' (4.5 m) TO 24" (600 mm) FROM PAVEMENT EDGE
701306-04	LANE CLOSURE, 2L, 2W, SLOW MOVING OPERATIONS DAY ONLY, FOR SPEEDS > 45 MPH
701326-04	LANE CLOSURE, 2L, 2W, PAVEMENT WIDENING, FOR SPEEDS > 45 MPH
701602-09	URBAN LANE CLOSURE, MULTILANE, 2W WITH BIDIRECTIONAL LEFT TURN LANE
701701-10	URBAN LANE CLOSURE, MULTILANE INTERSECTION
701801-06	SIDEWALK, CORNER OR CROSSWALK CLOSURE
701901-07	TRAFFIC CONTROL DEVICES
720001-01	SIGN PANEL MOUNTING DETAILS
720006-04	SIGN PANEL ERECTION DETAILS
728001-01	TELESCOPING STEEL SIGN SUPPORT
780001-05	TYPICAL PAVEMENT MARKINGS
781001-04	TYPICAL APPLICATIONS RAISED REFLECTIVE PAVEMENT MARKERS
814001-03	HANDHOLES
857001-01	STANDARD PHASE DESIGNATION DIAGRAMS AND PHASE SEQUENCES
873001-12	TRAFFIC SIGNAL GROUNDING & BONDING
878001-10	CONCRETE FOUNDATION DETAILS
880006-01	TRAFFIC SIGNAL MOUNTING DETAILS
876001-04	MAST ARM MOUNTED STREET NAME SIGNS
877002-04	PEDESTRIAN PUSH BUTTON POST
881001-01	STEEL MAST ARM ASSEMBLY AND ROLLS, 96" THROUGH 75'
881001-01	DETECTOR LOOP INSTALLATIONS

881001-01 TYPICAL LAYOUTS FOR DETECTOR LOOPS



FULL SIZE PLANS HAVE BEEN PREPARED USING STANDARD ENGINEERING SCALES. REDUCED SIZED PLANS WILL NOT CONFORM TO STANDARD SCALES. IN MAKING MEASUREMENTS ON REDUCED PLANS, THE ABOVE SCALES MAY BE USED.

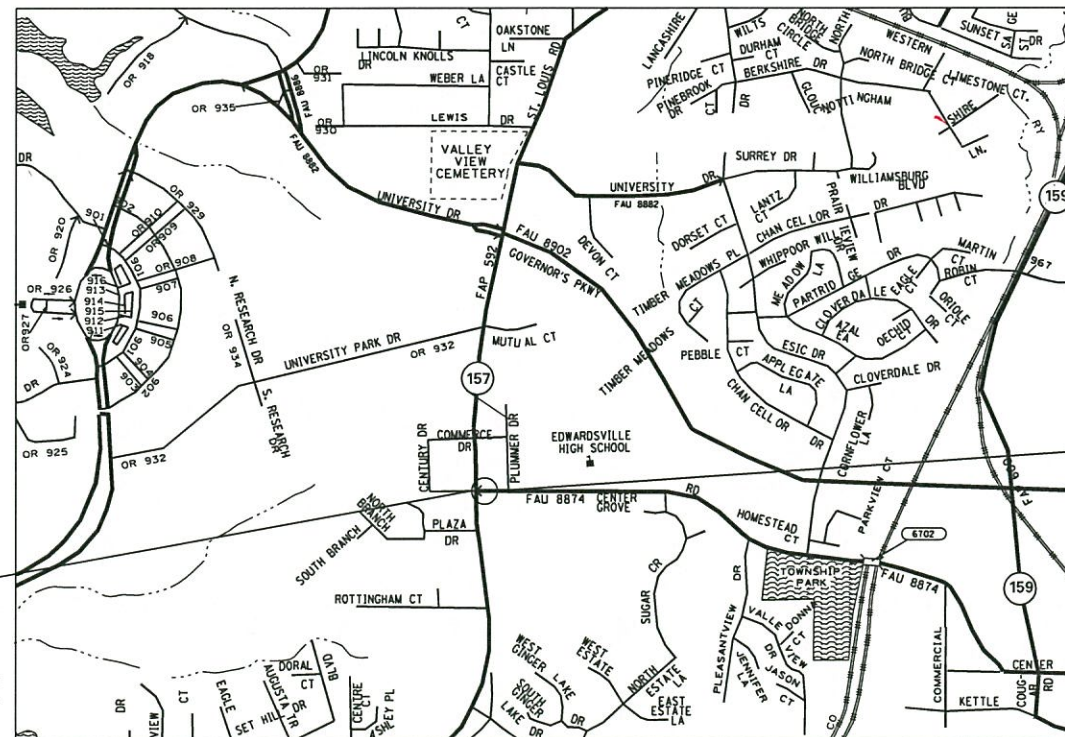
J.U.L.I.E.
 JOINT UTILITY LOCATION INFORMATION FOR EXCAVATION
 1-800-892-0123
 OR 811

BEGIN SECTION
STA 100 + 30

SCALE IN FEET
 PLAN 1" = 20'
 PROFILE HORIZ 1" = 20'
 PROFILE VERT 1" = 5'
 CROSS SECTION HORIZ 1" = 10'
 CROSS SECTION VERT 1" = 5'

DESIGN DESIGNATION

ROADWAY CLASSIFICATION = MAJOR COLLECTOR
 DESIGN SPEED = 40 MPH
 CURRENT ADT (2011) = 11,100
 DESIGN YEAR ADT (2038) = 12,700



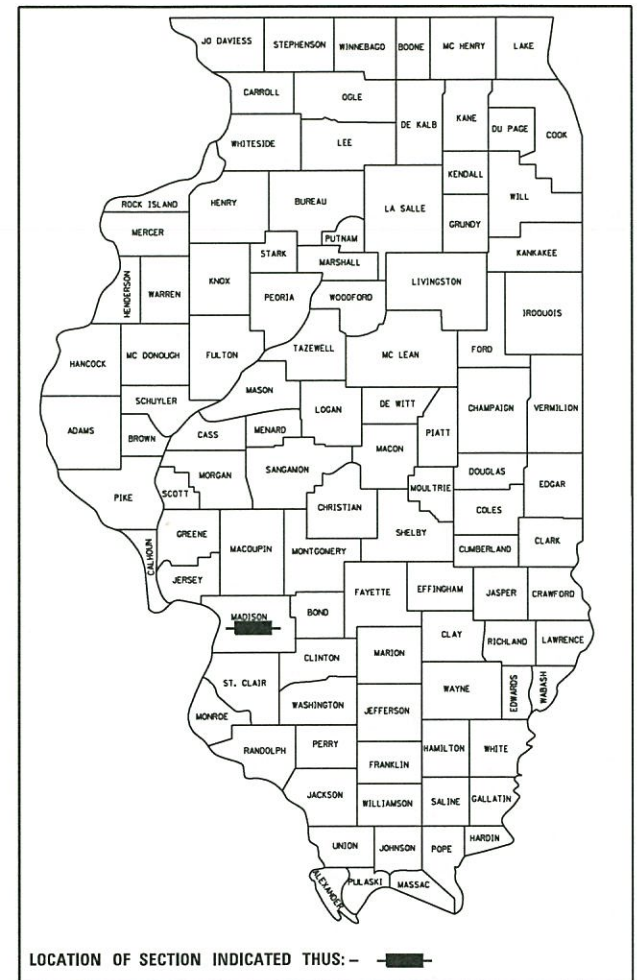
LOCATION MAP

GROSS LENGTH = 470.0' = (0.889 MILES)
 NET LENGTH = 470.0' = (0.889 MILES)

END SECTION
STA. 105 + 00



Brian Heil 1/23/18
 BRIAN HEIL
 IL P.E. NO. 062-054934
 EXPIRES: 11/30/2019



STATE OF ILLINOIS
 DEPARTMENT OF TRANSPORTATION

APPROVED: *[Signature]* 1/23/2018 DATE
 HAL PATTON MAYOR OF EDWARDSVILLE

PASSED: *[Signature]* 3/9/18 DATE
 DISTRICT ENGINEER OF LOCAL ROADS & STREETS

RELEASING FOR BID
 BASED ON LIMITED
 REVIEW: *[Signature]* 3/9/18 DATE
 REGION 5 ENGINEER

OATES ASSOCIATES

Collinsville: 100 Lanter Court, Suite 1, Collinsville, IL 62234, 618.345.2200
 Belleville: 20 East Main Street, Belleville, IL 62200, 618.416.4688
 St. Louis: 720 Olive, Suite 700, St. Louis, MO 63101, 314.588.8381
 St. Charles: 330 North Main, Suite 201, St. Charles, MO 63301, 636.493.6277

ILLINOIS DESIGN FIRM LICENSE NO.: 184.001115

PRINTED BY THE AUTHORITY OF THE STATE OF ILLINOIS

GENERAL NOTES

UTILITIES

1. ABOVE-GROUND UTILITY FACILITIES OR APPURTENANCES SHALL BE RELOCATED OR ADJUSTED BY THEIR RESPECTIVE OWNERS TO PROVIDE A MINIMUM HORIZONTAL CLEARANCE OF 1.5 FEET, MEASURED FROM THE FACE OF CURB TO THE NEAR EDGE OF THE OBJECT.
2. ILLINOIS STATE LAW REQUIRES A 48-HOUR NOTICE TO BE GIVEN TO ALL UTILITIES WITHIN THE PROJECT AREA BEFORE DIGGING. FIELD MARKING OF FACILITIES MAY BE OBTAINED BY CONTACTING J.U.L.I.E. OR FOR NON-MEMBERS, THE COMPANY DIRECTLY. AGENCIES KNOWN TO HAVE FACILITIES WITHIN THE PROJECT AREA ARE AS FOLLOWS: .

AT&T*
160 W DIVISION STREET
MARYVILLE, IL, 62062
DARREN SIMMONS
(618) 346-6499

CITY OF EDWARDSVILLE (WATER & SEWER)*
200 EAST PARK STREET
EDWARDSVILLE, IL 62025
(618) 692-7535

CHARTER COMMUNICATIONS (COMMUNICATIONS)*
210 WEST DIVISION STREET
MARYVILLE, IL 62062
618-345-8121

AMEREN IP (GAS & ELECTRIC)*
2600 NORTH CENTER
MARYVILLE, IL 62062
ANDY PARKER
(618) 346-1287

MEMBERS OF J.U.L.I.E. CALL TOLL FREE (800)892-0123 OR 811 AND ARE INDICATED BY A (*), NON J.U.L.I.E. MEMBERS MUST BE NOTIFIED INDIVIDUALLY.

GENERAL

3. THE CONTRACTOR SHALL PROVIDE BLOCKOUTS IN THE PROPOSED MEDIAN SURFACE FOR PLACEMENT OF SIGN POSTS, AS DIRECTED BY THE ENGINEER. THE COST OF THIS WORK WILL NOT BE PAID FOR SEPARATELY, BUT SHALL BE CONSIDERED AS INCLUDED IN THE CONTRACT UNIT PRICE FOR CONCRETE MEDIAN SURFACE.
4. THE CONTRACTOR SHALL FERTILIZE, SEED AND MULCH ALL EARTH SURFACES DISTURBED BY CONSTRUCTION. FERTILIZER, SEEDING AND MULCH WITHIN THE CONSTRUCTION LIMITS WILL BE PAID FOR AS PROVIDED IN THE CONTRACT. FERTILIZER, SEEDING AND MULCH OUTSIDE THESE LIMITS WILL NOT BE MEASURED FOR PAYMENT. SEE THE SEEDING SCHEDULE FOR ESTIMATED PLAN QUANTITIES.
5. ALL EXISTING ROADWAY FEATURES INCLUDING, BUT NOT LIMITED TO, PAVEMENT, CURB, SIDEWALK, DRIVEWAY PAVEMENT, CULVERTS, HEADWALLS, RIPRAP, RETAINING WALLS, WHICH INTERFERE WITH THE PROPOSED CONSTRUCTION SHALL BE REMOVED BY THE CONTRACTOR UNLESS NOTED OTHERWISE ON THE PLANS. ALL FEATURES WHICH ARE TO BE REMOVED AND FOR WHICH THERE IS NO SPECIFIC PAY ITEM, WILL NOT BE MEASURED SEPARATELY FOR PAYMENT AND THE COST OF THIS REMOVAL WORK SHALL BE CONSIDERED AS INCLUDED IN THE CONTRACT UNIT PRICE FOR EARTH EXCAVATION.

PAVING

6. THE CONTRACTOR SHALL NOTE THE LOCATION OF ALL MANHOLE AND VALVE COVER FRAMES AND LIDS LOCATED WITHIN THE RECONSTRUCTION LIMITS. APPROPRIATE CARE SHALL BE TAKEN TO PROTECT THESE ITEMS DURING REMOVAL OPERATIONS.
7. AT VARIOUS LOCATIONS, IT MAY BE NECESSARY TO TRANSITION PROPOSED COMBINATION CONCRETE CURB AND GUTTER TO MEET EXISTING CURBS OR GUTTERS. THE MINIMUM LENGTH OF TRANSITIONAL COMBINATION CURB AND GUTTER SHALL BE 10 FEET, UNLESS DIRECTED OTHERWISE BY THE ENGINEER.

DRAINAGE

8. STORM SEWER INVERTS SHOWN ON THE PLANS HAVE BEEN CALCULATED TO THE CENTER OF THE STRUCTURE. THE STORM SEWER SLOPES SHOWN ON THE PLANS ARE THE PERCENT GRADE FROM CENTER TO CENTER OF STRUCTURE. THE LENGTH OF STORM SEWERS SHOWN ON THE PLANS IS THE DISTANCE FROM CENTER TO CENTER OF STRUCTURE. STORM SEWER WILL BE MEASURED AND PAID FOR AS SPECIFIED IN ARTICLES 550.09 AND 550.10 OF THE "STANDARD SPECIFICATIONS FOR ROAD AND BRIDGE CONSTRUCTION." FLARED END SECTIONS ARE LOCATED BY STATION, OFFSET AND FLOWLINE ELEVATION AT THE FLARED END OF THE FLARED END SECTION.
9. THE OFFSETS TO ALL INLETS AND MANHOLES ARE GIVEN TO THE CENTER OF THE OPENING AT THE BASE OF THE FRAME AND GRATE OR LID. CONCENTRIC DRAINAGE STRUCTURES WERE ASSUMED WHEN CALCULATING THESE DIMENSIONS.
10. THE CONTRACTOR SHALL INCLUDE THE COST OF MAKING CONNECTIONS TO EXISTING DRAINAGE STRUCTURES IN THE CONTRACT UNIT PRICE FOR THE STORM SEWER ITEMS INVOLVED.
11. ALL DRAINAGE STRUCTURES CONSTRUCTED, ADJUSTED OR RECONSTRUCTED UNDER THE CONTRACT, SHALL BE CLEANED OF ANY ACCUMULATION OF SILT, DEBRIS OR FOREIGN MATTER AT THE END OF EACH WORKING DAY AND AT THE TIME OF FINAL INSPECTION. THE COST OF THIS WORK WILL NOT BE PAID FOR SEPARATELY, BUT SHALL BE CONSIDERED AS INCLUDED IN THE CONTRACT UNIT PRICE FOR THE VARIOUS DRAINAGE STRUCTURE ITEMS INCLUDED IN THE CONTRACT.

PAVEMENT MARKING

12. A QUANTITY FOR TEMPORARY PAVEMENT MARKING EQUAL TO THE AMOUNT OF PERMANENT PAVEMENT MARKING HAS BEEN INCLUDED IN THE PLANS IN THE EVENT THE PERMANENT PAVEMENT MARKINGS ARE UNABLE TO BE INSTALLED DUE TO WEATHER RESTRICTIONS. ONCE WEATHER CONDITIONS ALLOW FOR THE PERMANENT PAVEMENT MARKING INSTALLATION, THE TEMPORARY PAVEMENT MARKINGS SHALL BE REMOVED UTILIZING THE PAY ITEM FOR TEMPORARY PAVEMENT MARKING REMOVAL.
13. THE PAVEMENT MARKING LOCATIONS SHOWN IN THE PLANS ARE APPROXIMATE. PROPOSED CROSSWALKS AND STOP BARS SHALL BE ADJUSTED AS DIRECTED BY THE ENGINEER, IF NECESSARY, TO MATCH FIELD CONDITIONS.

APPROXIMATE QUANTITIES, SYMBOLS & ABBREVIATIONS

14. THE FOLLOWING ITEMS AND APPROXIMATE QUANTITIES ARE INCLUDED IN THE "SUMMARY OF QUANTITIES" IN ORDER TO ESTABLISH A UNIT COST FOR WORK WHICH MAY BE REQUIRED TO CONSTRUCT THIS SECTION. THE ACTUAL QUANTITY OF EACH ITEM SHALL BE DETERMINED BY THE ENGINEER IN THE FIELD.

WATER VALVES TO BE ADJUSTED 5 EACH

15. THE FOLLOWING SYMBOLS, ABBREVIATIONS AND PATTERNS SUPPLEMENT OR SUPERCEDE HIGHWAY STANDARD 000001:

 FLARED END SECTION

- BO BY OTHERS (USED IN CONJUNCTION WITH TBA & TBR)
- CP CONTROL POINT
- ELEV ELEVATION
- N/F NOW OR FORMERLY
- PERM PERMANENT
- PVC POLYVINYL CHLORIDE PIPE
- TBA TO BE ADJUSTED
- TBRL TO BE RELOCATED
- TYP TYPICAL
- W WIDTH

COMMITMENTS

NONE

MODEL NAME = Default
FILE NAME = H:\P\180914\Mapstation\Sheets\08160914 - Sht. Gen. Notes.dgn



USER NAME = brandon.rotemann	DESIGNED -	REVISED -
PLOT SCALE = 40.0000' / in.	DRAWN -	REVISED -
PLOT DATE = 1/26/2018	CHECKED -	REVISED -
	DATE -	REVISED -

**STATE OF ILLINOIS
DEPARTMENT OF TRANSPORTATION**

GENERAL NOTES & COMMITMENTS

SCALE: NTS SHEET 1 OF 1 SHEETS STA. TO STA.

F.A.U. RTE.	SECTION	COUNTY	TOTAL SHEETS	SHEET NO.
8874	16-00109-00-PV	MADISON	22	2
CENTER GROVE ROAD		CONTRACT NO. 97670		
ILLINOIS FED. AID PROJECT				

SI	SP	CODE NO.	ITEM	UNIT	TOTAL QUANTITY
		20200100	EARTH EXCAVATION	CU YD	400
	*	20800150	TRENCH BACKFILL	CU YD	24
		21101615	TOPSOIL FURNISH AND PLACE, 4"	SO YD	763
		25100630	EROSION CONTROL BLANKET	SO YD	345
		25200100	SODDING	SO YD	763
		28000305	TEMPORARY DITCH CHECKS	FOOT	18
		28000250	TEMPORARY EROSION CONTROL SEEDING	POUND	80
		28000400	PERIMETER EROSION BARRIER	FOOT	135
		28000500	INLET AND PIPE PROTECTION	EACH	5
	*	28100105	STONE RIPRAP, CLASS A3	SO YD	35
		28200200	FILTER FABRIC	SO YD	35
		35101100	AGGREGATE BASE COURSE, TYPE A 12"	SO YD	610
		35400300	PORTLAND CEMENT CONCRETE BASE COURSE WIDENING 8"	SO YD	205
		40600290	BITUMINOUS MATERIALS (TACK COAT)	POUND	586

SI	SP	CODE NO.	ITEM	UNIT	TOTAL QUANTITY
		40603340	HOT-MIX ASPHALT SURFACE COURSE, MIX "D", N70	TON	146
		42000501	PORTLAND CEMENT CONCRETE PAVEMENT 10" (JOINTED)	SO YD	219
		42300400	PORTLAND CEMENT CONCRETE DRIVEWAY PAVEMENT, 8 INCH	SO YD	66
		42400100	PORTLAND CEMENT CONCRETE SIDEWALK 4 INCH	SO FT	2,259
	*	42400800	DETECTABLE WARNINGS	SO FT	34
		44000100	PAVEMENT REMOVAL	SO YD	107
	*	44000157	HOT-MIX ASPHALT SURFACE REMOVAL, 2"	SO YD	1,099
		44000200	DRIVEWAY PAVEMENT REMOVAL	SO YD	63
		44000500	COMBINATION CURB AND GUTTER REMOVAL	FOOT	183
		44000600	SIDEWALK REMOVAL	SO FT	323
		44004250	PAVED SHOULDER REMOVAL	SO YD	138
		44300200	STRIP REFLECTIVE CRACK CONTROL TREATMENT	FOOT	200
		50100100	REMOVAL OF EXISTING STRUCTURES	EACH	1
	*	50105220	PIPE CULVERT REMOVAL	FOOT	16

NOTES: SP - SEE PROJECT SPECIFIC SPECIAL PROVISIONS
SI - SPECIALTY ITEM

MODEL NAME = Default
FILE NAME = H:\P\16094\Inter-station\Sheets\DR16094 - Shr-600.dgn



USER NAME = b.heil	DESIGNED -	REVISED -
PLOT SCALE = 40.0000' / in.	DRAWN -	REVISED -
PLOT DATE = 1/29/2018	CHECKED -	REVISED -
	DATE -	REVISED -

**STATE OF ILLINOIS
DEPARTMENT OF TRANSPORTATION**

SUMMARY OF QUANTITIES

SCALE: NTS SHEET 1 OF 3 SHEETS STA. TO STA.

F.A.U. RTE.	SECTION	COUNTY	TOTAL SHEETS	SHEET NO.
8874	16-00109-00-PV	MADISON	22	3
CENTER GROVE ROAD			CONTRACT NO. 97670	
ILLINOIS FED. AID PROJECT				

SI	SP	CODE NO.	ITEM	UNIT	TOTAL QUANTITY
		54213669	PRECAST REINFORCED CONCRETE FLARED END SECTIONS 24"	EACH	1
		550A2340	STORM SEWERS, RUBBER GASKET, CLASS A, TYPE 1 18"	FOOT	363
		550A2360	STORM SEWERS, RUBBER GASKET, CLASS A, TYPE 1 24"	FOOT	39
		55100900	STORM SEWER REMOVAL 18"	FOOT	280
*		56109210	WATER VALVES TO BE ADJUSTED	EACH	5
		60240215	INLETS, TYPE B, TYPE 1 FRAME, CLOSED LID	EACH	1
		60218400	MANHOLES, TYPE A, 4'-DIAMETER, TYPE 1 FRAME, CLOSED LID	EACH	1
		60605000	COMBINATION CONCRETE CURB AND GUTTER, TYPE B-6.24	FOOT	458
		60608600	COMBINATION CONCRETE CURB AND GUTTER, TYPE M-6.06	FOOT	50
		60618300	CONCRETE MEDIAN SURFACE, 4 INCH	SO FT	113
*		66900200	NON-SPECIAL WASTE DISPOSAL	CU YD	50
*		66900450	SPECIAL WASTE PLANS AND REPORTS	L SUM	1
*		66900530	SOIL DISPOSAL ANALYSIS	EACH	1
		67100100	MOBILIZATION	L SUM	1

SI	SP	CODE NO.	ITEM	UNIT	TOTAL QUANTITY
		70300100	SHORT TERM PAVEMENT MARKING	FOOT	1,040
		70300150	SHORT TERM PAVEMENT MARKING REMOVAL	SO FT	172
		70300210	TEMPORARY PAVEMENT MARKING LETTERS AND SYMBOLS	SO FT	82.2
		70300220	TEMPORARY PAVEMENT MARKING - LINE 4"	FOOT	1,834
		70300250	TEMPORARY PAVEMENT MARKING - LINE 8"	FOOT	46
		70300260	TEMPORARY PAVEMENT MARKING - LINE 12"	FOOT	199
		70300280	TEMPORARY PAVEMENT MARKING - LINE 24"	FOOT	71
*		72000100	SIGN PANEL - TYPE 1	SO FT	22.3
*		72400710	RELOCATE SIGN PANEL - TYPE 1	SO FT	9.0
*		72800100	TELESCOPING STEEL SIGN SUPPORT	FOOT	47
*		78005100	EPOXY PAVEMENT MARKING - LETTERS AND SYMBOLS	SO FT	82.2
*		78005110	EPOXY PAVEMENT MARKING - LINE 4"	FOOT	1,834
*		78005140	EPOXY PAVEMENT MARKING - LINE 8"	FOOT	46
*		78005150	EPOXY PAVEMENT MARKING - LINE 12"	FOOT	199

NOTES: SP - SEE PROJECT SPECIFIC SPECIAL PROVISIONS
SI - SPECIALTY ITEM

MODEL NAME = Default
FILE NAME = I:\16094\Microstation\Sheet\0816094 - Sht.500.dgn



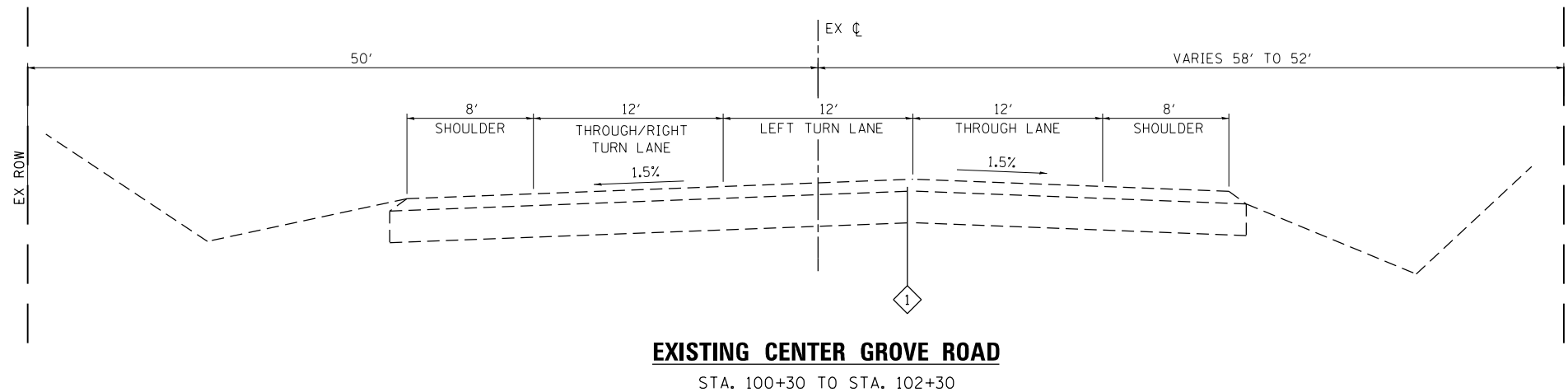
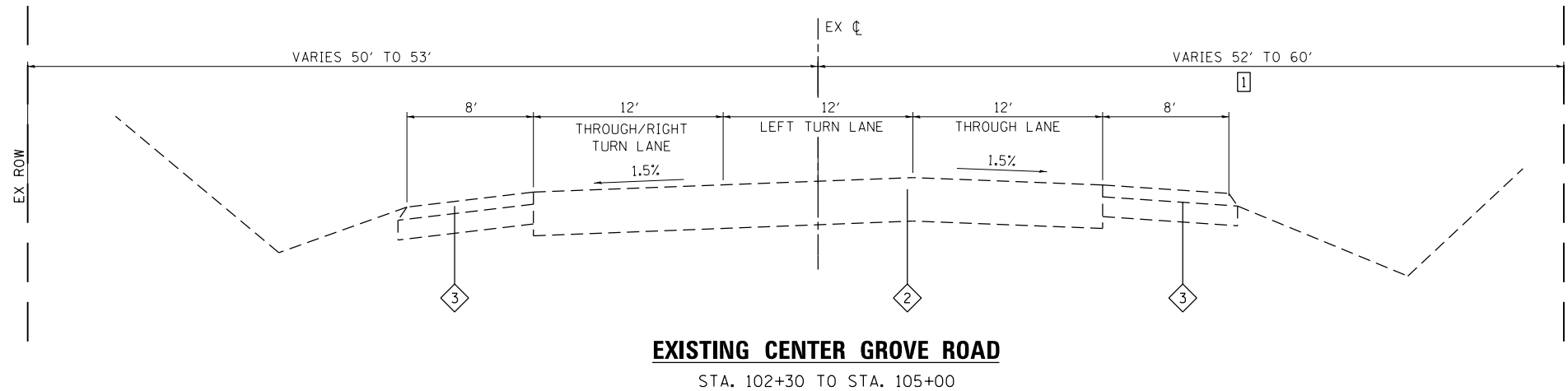
USER NAME = b.hes1	DESIGNED -	REVISED -
PLOT SCALE = 40.0000' / in.	DRAWN -	REVISED -
PLOT DATE = 3/21/2018	CHECKED -	REVISED -
	DATE -	REVISED -

**STATE OF ILLINOIS
DEPARTMENT OF TRANSPORTATION**

SUMMARY OF QUANTITIES

SCALE: NTS SHEET 2 OF 3 SHEETS STA. TO STA.

F.A.U. RTE.	SECTION	COUNTY	TOTAL SHEETS	SHEET NO.
8874	16-00109-00-PV	MADISON	22	4
CENTER GROVE ROAD			CONTRACT NO. 97670	
ILLINOIS FED. AID PROJECT				



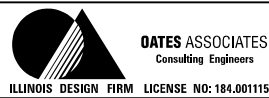
TYPICAL SECTION LEGEND

- ① EXISTING HMA PAVEMENT
- ② EXISTING PCC PAVEMENT
- ③ EXISTING BITUMINOUS SHOULDER

TYPICAL SECTION NOTES

- ① ROW WIDTH VARIES FROM 52' TO 44' FROM STA. 102+30 TO STA. 103+57
- ROW WIDTH VARIES FROM 44' TO 61' AT STA. 103+57

MODEL NAME = Default
FILE NAME = H:\P\16894\Mapstation\Sheets\0816094 - Sh\Typical Sections.dgn



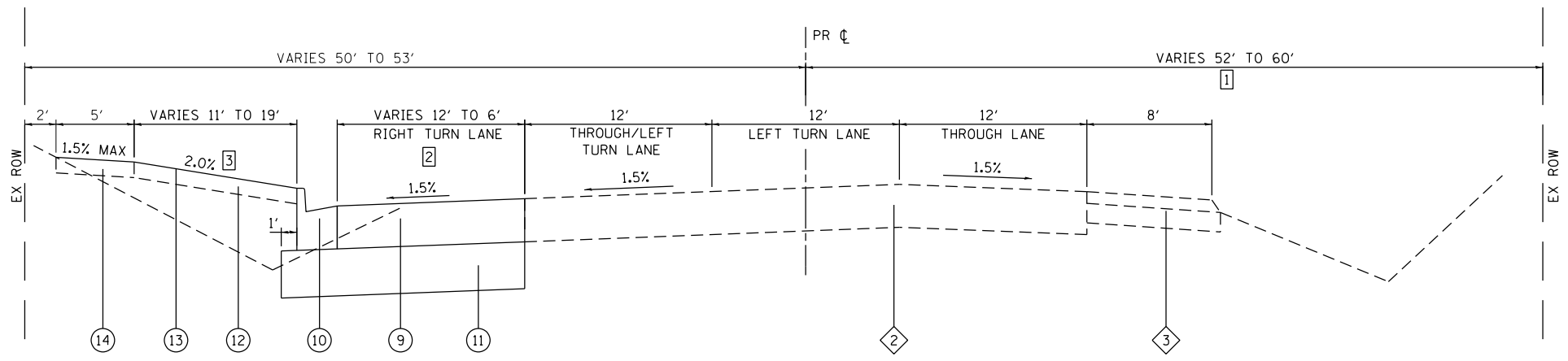
USER NAME = brandon.ratermann	DESIGNED -	REVISED -
DRAWN -	REVISED -	
PLOT SCALE = 40.0000' / in.	CHECKED -	REVISED -
PLOT DATE = 1/26/2018	DATE -	REVISED -

**STATE OF ILLINOIS
DEPARTMENT OF TRANSPORTATION**

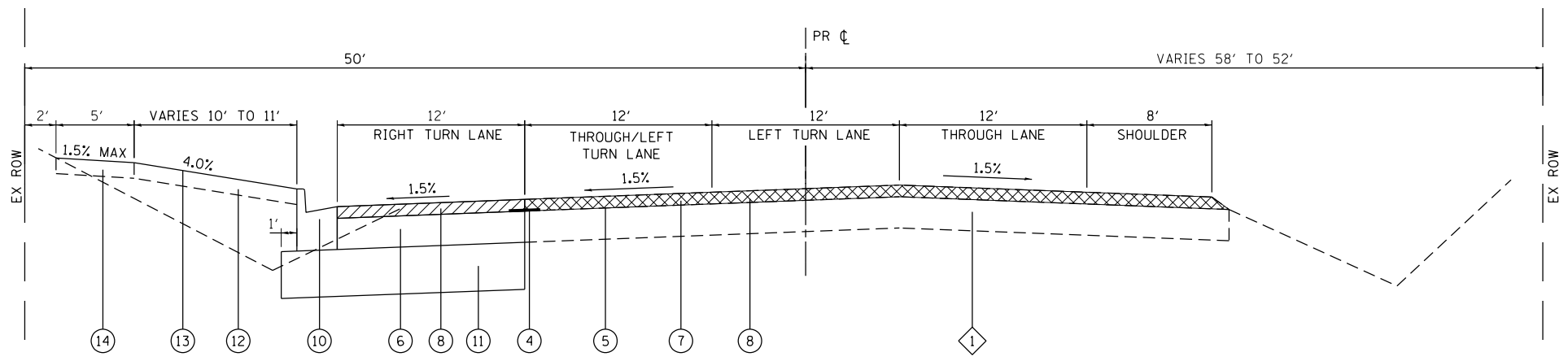
TYPICAL SECTIONS

SCALE: NTS SHEET 1 OF 2 SHEETS STA. TO STA.

F.A.U. RTE.	SECTION	COUNTY	TOTAL SHEETS	SHEET NO.
8874	16-00109-00-PV	MADISON	22	6
CENTER GROVE INTERSECTION			CONTRACT NO. 97670	
ILLINOIS FED. AID PROJECT				



PROPOSED CENTER GROVE ROAD
STA. 102+20 TO STA. 104+19



PROPOSED CENTER GROVE ROAD
STA. 100+30 TO STA. 102+20

TYPICAL SECTION LEGEND

- ① EXISTING HMA PAVEMENT
- ② EXISTING PCC PAVEMENT
- ③ EXISTING BITUMINOUS SHOULDER
- ④ PROPOSED STRIP REFLECTIVE CRACK CONTROL
- ⑤ PROPOSED BITUMINOUS MATERIALS TACK COAT
- ⑥ PROPOSED PCC BASE COURSE WIDENING
- ⑦ PROPOSED HMA SURFACE COURSE REMOVAL, 2"
- ⑧ PROPOSED HMA SURFACE COURSE, MIX "D", N70, 2"
- ⑨ PROPOSED PCC PAVEMENT
- ⑩ PROPOSED COMBINATION CURB & GUTTER, TYPE B-6.24
- ⑪ PROPOSED AGGREGATE BASE COURSE, TYPE A 12"
- ⑫ PROPOSED TOPSOIL FURNISH & PLACE, 4"
- ⑬ PROPOSED SODDING
- ⑭ PROPOSED PCC SIDEWALK, 4"

TYPICAL SECTION NOTES

- ① ROW WIDTH VARIES FROM 52' TO 44' FROM STA. 102+30 TO STA. 103+57
- ROW WIDTH VARIES FROM 44' TO 61' AT STA. 103+57
- ② PAVEMENT WIDTH VARIES FROM 12' AT STA. 102+86 TO 6' AT STA. 104+19
- ③ EARTH BUFFER CROSS SLOPE TRANSITIONS FROM 4.0% TO 2.0% AT STA. 103+15

MODEL NAME = Default
FILE NAME = H:\P\16094\Mapstation\Sheets\0816094 - Sh\Typical Sections.dgn



USER NAME = brandon.atermann	DESIGNED -	REVISED -
DRAWN -	REVISOR -	
PLOT SCALE = 40.0000' / in.	CHECKED -	REVISOR -
PLOT DATE = 1/26/2018	DATE -	REVISOR -

**STATE OF ILLINOIS
DEPARTMENT OF TRANSPORTATION**

TYPICAL SECTIONS

SCALE: NTS SHEET 2 OF 2 SHEETS STA. TO STA.

F.A.U. RTE.	SECTION	COUNTY	TOTAL SHEETS	SHEET NO.
8874	16-00109-00-PV	MADISON	22	7
CENTER GROVE INTERSECTION			CONTRACT NO. 97670	
ILLINOIS FED. AID PROJECT				

EARTHWORK

STATION	STATION	EARTH EXCAVATION	EARTH EXCAVATION ADJUSTED FOR SHRINKAGE (NOTE 1)	EMBANKMENT (NOTE 2)	NON SPL WASTE DISPOSAL (CU YD)	EARTHWORK BALANCE WASTE (+) OR SHORTAGE (-) (NOTE 3)
		(CU YD)	(CU YD)	(CU YD)	(CU YD)	(CU YD)
100+50	105+00	350	263	140		123
DITCH ALONG IL RT 157		50	38	5	50	-5
TOTAL		400	301	145	50	118

EARTHWORK NOTES:

1. ESTIMATED SHRINKAGE FACTOR = 25%.
2. APPROXIMATE EMBANKMENT QUANTITY IS SHOWN FOR INFORMATION ONLY.
3. APPROXIMATE EARTHWORK BALANCE IS SHOWN FOR INFORMATION ONLY.

CURB & GUTTER

STATION	STATION	OFFSET	COMB CURB GUTTER REM (FOOT)	COMB CC&G TB6.24 (FOOT)
100+27	100+94	LT	100	281
		102+90	LT	23
104+19	105+00	LT	60	177
TOTAL			183	458

SIDEWALK

STATION	STATION	OFFSET	PC CONC SIDEWALK 4 (NOTE 1)	DETECTABLE WARNINGS (NOTE 1)	SIDEWALK REM
			(SQ FT)	(SQ FT)	(SQ FT)
100+39	102+71	LT	1,480	24	253
		CE ENT	44		
103+09	104+50	LT	735	10	70
TOTAL			2,259	34	323

SIDEWALK NOTES:

1. SIDEWALK RAMPS ACCESSIBLE TO THE DISABLED ARE REQUIRED. SEE PLAN SHEETS FOR LOCATIONS AND TYPES. SEE CONSTRUCTION DETAILS SHEET AND HIGHWAY STANDARD 424001 FOR CURB RAMP DETAILS

PAVEMENT

STATION	STATION	OFFSET	PCC BASE CSE W 8	BIT MATLS TACK CT	HMA SC D N70	AGG BASE CSE 12 TY A	PCC PAVT 10 JOINTED	PAVEMENT REM	HMA SURF REM 2	PAVED SHLD REM	STRIP REF CR CON TR
			(SQ YD)	(NOTE 1) (POUND)	(NOTE 1) (TON)	(SQ YD)	(SQ YD)	(SQ YD)	(SQ YD)	(SQ YD)	(FOOT)
100+30	102+20	LT/RT	205	586	146	294		107	1,099		200
102+20	102+90	LT				118	91			40	
102+90	104+20	LT				198	128			98	
TOTAL			205	586	146	610	219	107	1,099	138	200

PAVEMENT NOTES:

1. APPLICATION RATES USED FOR QUANTITY ESTIMATES ARE AS FOLLOWS:
 BITUMINOUS MATERIALS TACK COAT: 0.05 LB / SQ FT
 HOT-MIX ASPHALT: 112 LB / SQ YD / INCH THICKNESS

ENTRANCE

STATION (NOTE 1)	OFFSET	ENTRANCE TYPE	ENTRANCE DEPTH "D" (FOOT)	EXISTING SURFACE TYPE	PCC DRIVEWAY PAVT 8 (NOTE 2)	DRIVEWAY PAVEMENT REM	CONC MEDIAN SURF 4	COMB CC&G TM6.06
					(SQ YD)	(SQ YD)	(SQ FT)	(FOOT)
102+90	LT	CE	19	CONC	66	63	113	50
TOTAL					66	63	113	50

ENTRANCE NOTES:

1. DEPRESSED CURB AND GUTTER THROUGH ENTRANCES SHALL BE MEASURED FOR PAYMENT AS COMBINATION CONCRETE CURB AND GUTTER, TYPE B-6.24. CURB ALONG ENTRANCE SHALL BE PAID FOR AS TYPE B-6.24
2. DEPTH MEASURED FROM B/C TO EX ROW LINE.

MODEL NAME = Default
FILE NAME = H:\P\16094\Microstation\Sheets\0816094 - Sht.Schedulof.dgn



USER NAME = b.heil	DESIGNED -	REVISED -
PLOT SCALE = 40.0000' / in.	DRAWN -	REVISED -
PLOT DATE = 3/20/2018	CHECKED -	REVISED -
	DATE -	REVISED -

**STATE OF ILLINOIS
DEPARTMENT OF TRANSPORTATION**

SCHEDULES OF QUANTITIES		
SCALE: NTS	SHEET 1 OF 2 SHEETS	STA. TO STA.

F.A.U. RTE.	SECTION	COUNTY	TOTAL SHEETS	SHEET NO.
8874	16-00109-00-PV	MADISON	22	8
CENTER GROVE ROAD		CONTRACT NO. 97670		
ILLINOIS FED. AID PROJECT				

PAVEMENT MARKING

STATION	STATION	OFFSET	COMMENT	COLOR	SHRT TRM PAVT MKING (NOTE 3) (FOOT)	SHRT TRM PAVT MK REM (NOTE 4) (SQ FT)	TEMP PVT MK LTRS & SYMB (NOTE 2) (SQ FT)	TEMP PVT MK LINE 4 (NOTE 2) (FOOT)	TEMP PVT MK LINE 8 (NOTE 2) (FOOT)	TEMP PVT MK LINE 12 (NOTE 2) (FOOT)	TEMP PVT MK LINE 24 (NOTE 2) (FOOT)	TEMP PVT MK REM (NOTE 2) (SQ FT)	PAVT MK REM WTR BL (SQ FT)	EPOXY PVT MK LTRS & SYMB (NOTE 1) (SQ FT)	EPOXY PVT MK LINE 4 (NOTE 1) (FOOT)	EPOXY PVT MK LINE 8 (NOTE 1) (FOOT)	EPOXY PVT MK LINE 12 (NOTE 1) (FOOT)	EPOXY PVT MK LINE 24 (NOTE 1) (FOOT)	RAISED REFL PVT MKR (NOTE 5) (EACH)	RAISED REFL PVT MK REM (EACH)	
CENTER GROVE ROAD																					
100+53	102+86	LT	RT TURN LANE	WHITE	216	36	17.6	339			23	176	67	17.6	339				23		
100+62	102+58	LT	TH & RT TURN LANE	WHITE	122	20	29.4	195			12	118		29.4	195				12	11	5
100+62	102+58	LT	LT TURN LANE	WHITE	24	4	17.6				12	42		17.6					12		
100+62	104+50	RT	DOUBLE CL	YELLOW	389	64		778				259	125		778					5	7
100+90	102+20	RT	EDGE LINE	WHITE	70	12		140				47			140						
102+86	104+22	LT	LANE TAPER SKIP DASH	WHITE	21	3		42				14			42						
103+18	105+00	LT	TWLT LINES	YELLOW	115	19		230				77	65		230						
	104+00	CL	TWLT ARROWS	WHITE			17.6					18		17.6							
103+18	105+00	RT	TWLT LINES	YELLOW	35	6		70				23	65		70						
INTERSECTIONS																					
	IL ROUTE 157	LT	X WALK & STOP BAR	WHITE	48	8				179	24	227	200				179	24			
	IL ROUTE 157	RT/LT	DUAL LEFT TURN DASH	WHITE				40				13		40							
	IL ROUTE 157	LT	SHOULDER HATCH	WHITE					46	20		20	4			46	20				
TOTAL					1,040	172	82.2	1,834	46	199	71	1,034	526	82.2	1,834	46	199	71	16	12	

PAVEMENT MARKING NOTES:

- SEE HIGHWAY STANDARD 780001 FOR PAVEMENT MARKING DETAILS.
 - TEMPORARY PAVEMENT MARKINGS TO BE PLACED AT THE ENGINEER'S DISCRETION
 - SHORT TERM PAVEMENT MARKING WILL BE APPLIED AFTER THE MILLING OPERATION AND AFTER HMA SURFACE PLACEMENT UNTIL FINAL PAVEMENT MARKINGS ARE INSTALLED
 - SHORT TERM PAVEMENT MARKING REMOVAL APPLIES ONLY TO THE MARKINGS INSTALLED ON THE PROPOSED HMA SURFACE.
 - SEE HIGHWAY STANDARD 780001 FOR RAISED REFLECTIVE PAVEMENT MARKINGS STANDARDS
- RAISED REFLECTIVE PAVEMENT MARKER QUANTITY INCLUDES THE FOLLOWING TYPES
- | | | |
|----|------|-------------------------|
| 11 | EACH | ONE-WAY CRYSTAL MARKERS |
| 5 | EACH | TWO-WAY AMBER MARKERS |
| 16 | EACH | TOTAL |

SIGN

STATION	OFFSET	MUTCD TYPE	DESCRIPTION	SIZE (IN X IN)	SIGN PANEL T1 (SQ FT)	TELES STL SIN SUPPORT (FOOT)	RELOC SIGN PANEL T1 (SQ FT)	NOTES
42+00	65	LT	R10-3e	SIGNAL X-WALK	9 X 15	0.9		
100+45	65	LT	R10-3e	SIGNAL X-WALK	9 X 15	0.9		
100+55	45	LT	W11-2	PED CROSSING	36 X 36		9	MOVE TO NEW SIGNAL POST
102+63	50	LT	R3-5R	RIGHT TURN ONLY	30 X 36	7.5	16	
102+90	37	LT	R5-1	DO NOT ENTER	36 X 36	9	16	
102+97	37	LT	R5-1X-2	ENTER ONLY	24 X 24	4	15	
TOTALS						22.3	47	9.0

SIGN NOTES

- SEE SIGNING SHEETS FOR ADDITIONAL INFORMATION

SEEDING

STATION	STATION	OFFSET	SEEDING CL 1A SPL (NOTE 1) (ACRE)	NITROGEN FERT NUTR (NOTE 1&2) (POUND)	PHOSPHORUS FERT NUTR (NOTE 1&2) (POUND)	POTASSIUM FERT NUTR (NOTE 1&2) (POUND)	MULCH METHOD 2 (NOTE 1&3) (ACRE)	TEMP EROS CNTL SEEDING (NOTE 3) (POUND)	TOP SOIL F & P 4 (SQ YD)	SODDING (NOTE 2) (SQ YD)
IL ROUTE 157	DITCH	LT	0.25	23	23	23	0.25	50		
100+00	102+90	LT		6	6	6		20	500	500
102+90	105+00	LT		3	3	3		10	263	263
TOTAL			0.25	32	32	32	0.25	80	763	763

SEEDING NOTES:

- NITROGEN, PHOSPHORUS, & POTASSIUM FERTILIZER NUTRIENTS SHALL BE APPLIED AT A RATE OF 90 LBS/ACRE FOR ALL SEEDING APPLICATIONS. THE QUANTITIES ARE SHOWN FOR INFORMATION ONLY. THE COST FOR FERTILIZER NUTRIENTS AND MULCH SHALL BE INCLUDED IN THE CONTRACT UNIT PRICE FOR SEEDING CLASS 1A SPECIAL.
- NITROGEN, PHOSPHORUS, & POTASSIUM FERTILIZER NUTRIENTS SHALL BE APPLIED AT A RATE OF 60 LBS/ACRE FOR ALL SODDING APPLICATIONS. THE QUANTITIES ARE SHOWN FOR INFORMATION ONLY. THE COST FOR FERTILIZER NUTRIENTS SHALL BE INCLUDED IN THE CONTRACT UNIT PRICE FOR SODDING.
- SEEDING APPLICATION RATE IS 100 LBS/ACRE AND IS ESTIMATED FOR 2 APPLICATIONS

MODEL NAME = Default
FILE NAME = H:\P\18094\Miscstation\Sheets\DB18094 - Sh-5chedule.dgn



USER NAME = b.heil	DESIGNED -	REVISED -
	DRAWN -	REVISED -
PLOT SCALE = 48.0000' / in.	CHECKED -	REVISED -
PLOT DATE = 2/6/2018	DATE -	REVISED -

**STATE OF ILLINOIS
DEPARTMENT OF TRANSPORTATION**

SCHEDULES OF QUANTITIES

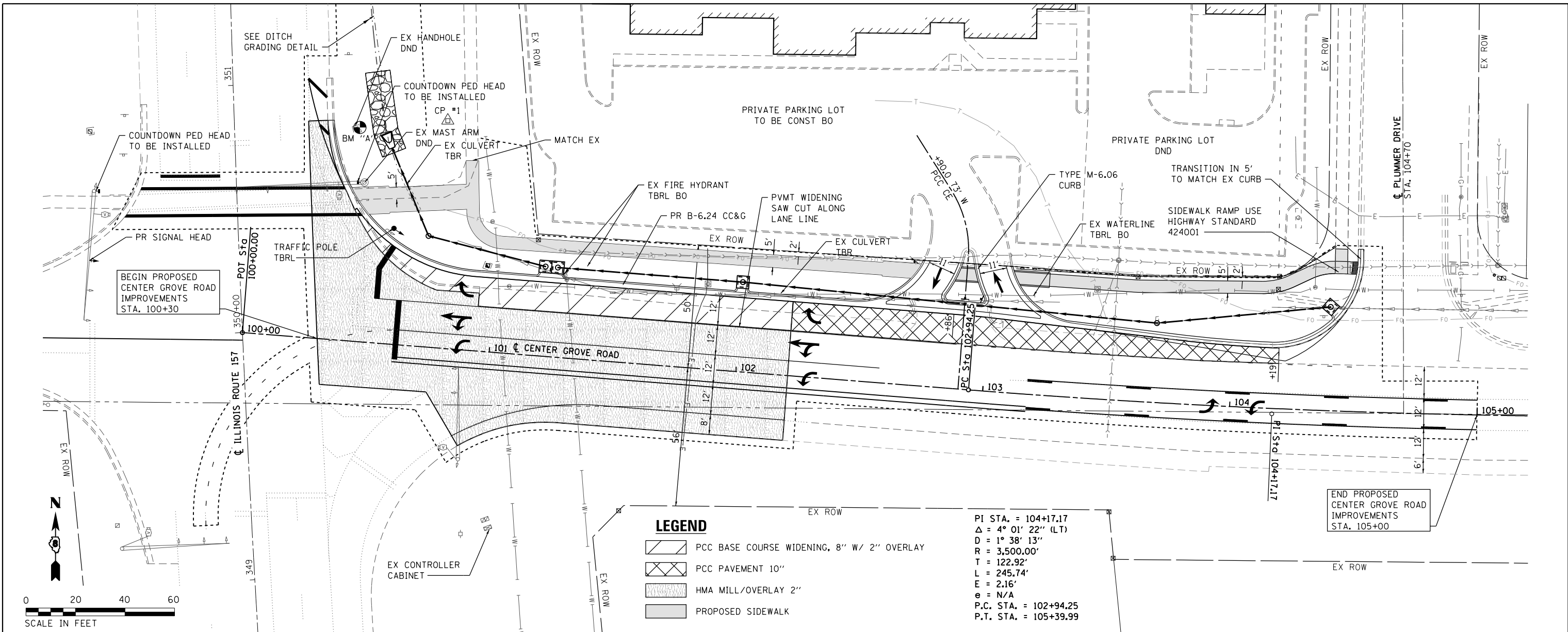
SCALE: NTS SHEET 2 OF 2 SHEETS STA. TO STA.

F.A.U. RTE.	SECTION	COUNTY	TOTAL SHEETS	SHEET NO.
8874	16-00109-00-PV	MADISON	22	9
CENTER GROVE ROAD			CONTRACT NO. 97670	
ILLINOIS FED. AID PROJECT				

PLAN	SURVEYED	DATE
	PLOTTED	
	GRADES CHECKED	
	STRUCTURE NOTATIONS CHECKED	
	NOTE BOOK NO.	
	FILE NAME	

PROFILE	SURVEYED	DATE
	PLOTTED	
	GRADES CHECKED	
	STRUCTURE NOTATIONS CHECKED	
	NOTE BOOK NO.	
	FILE NAME	

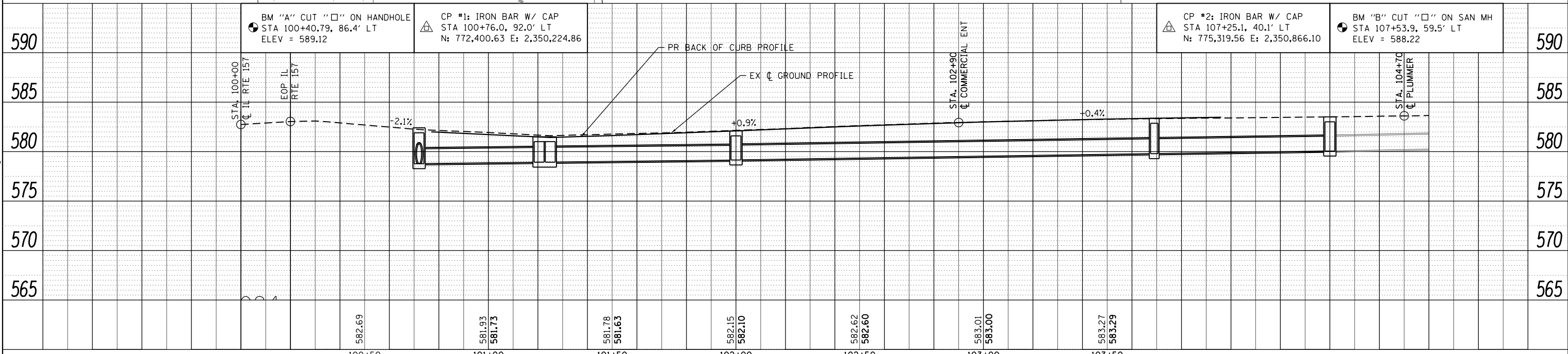
MODEL NAME = Default
 FILE NAME = H:\V\10894\Microstation\Sheets\0816894 - Sht.Plan_Prof.dgn



LEGEND

- PCC BASE COURSE WIDENING, 8" W/ 2" OVERLAY
- PCC PAVEMENT 10"
- HMA MILL/OVERLAY 2"
- PROPOSED SIDEWALK

PI STA. = 104+17.17
 $\Delta = 4^\circ 01' 22''$ (LT)
 $D = 1^\circ 38' 13''$
 $R = 3,500.00'$
 $T = 122.92'$
 $L = 245.74'$
 $E = 2.16'$
 $\theta = N/A$
 P.C. STA. = 102+94.25
 P.T. STA. = 105+39.99



100+50	101+00	101+50	102+00	102+50	103+00	103+50
582.69	581.93 581.73	581.78 581.63	582.15 582.10	582.62 582.60	583.01 583.00	583.27 583.29

DATES ASSOCIATES
 Consulting Engineers
 ILLINOIS DESIGN FIRM LICENSE NO: 184.001115

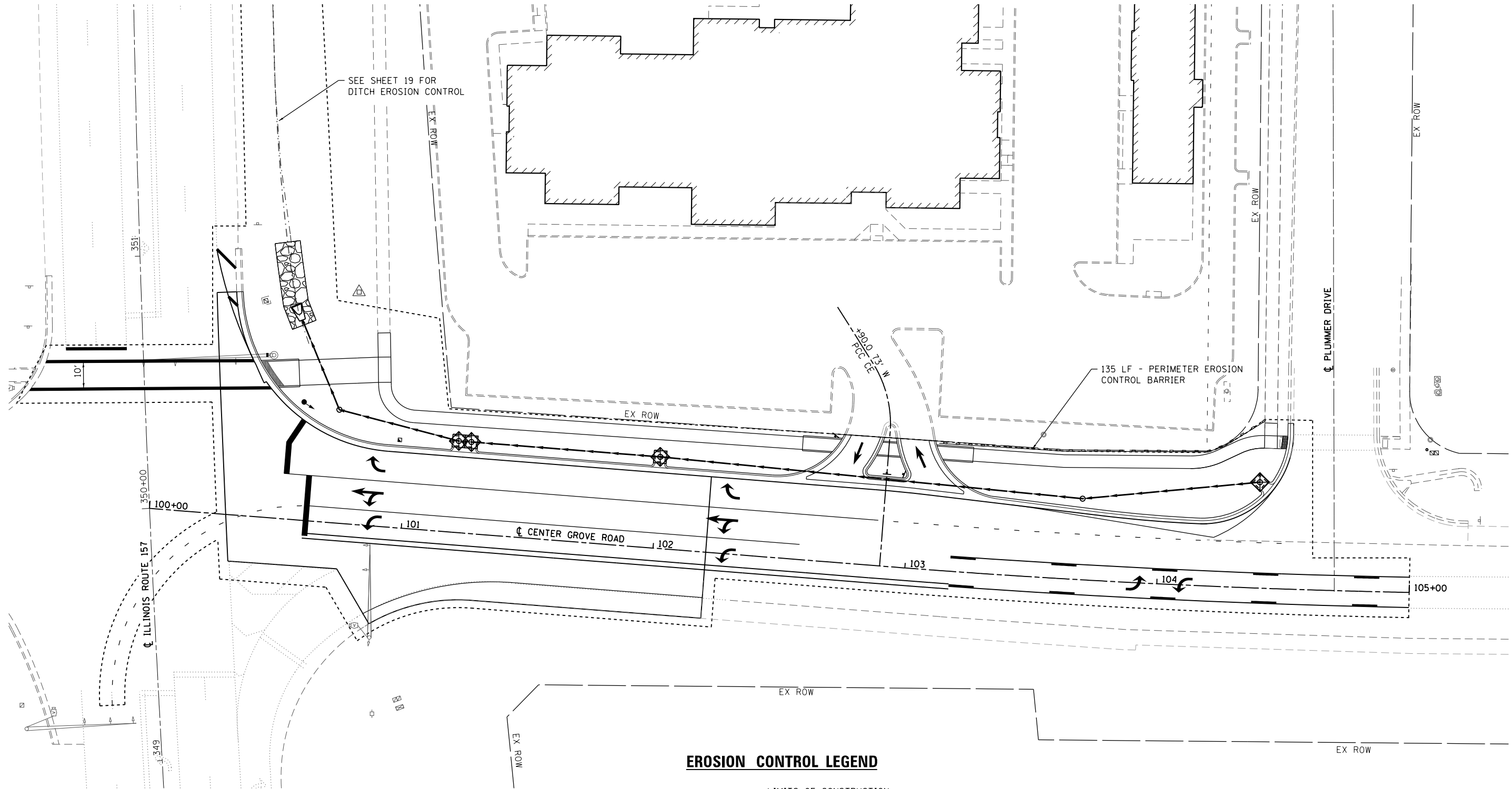
USER NAME = b.heil	DESIGNED -	REVISED -
	DRAWN -	REVISED -
PLOT SCALE = 48.0000' / in.	CHECKED -	REVISED -
PLOT DATE = 2/16/2018	DATE -	REVISED -

STATE OF ILLINOIS
DEPARTMENT OF TRANSPORTATION

PLAN & PROFILE SHEET

SCALE: 1" = 20' SHEET 1 OF 1 SHEETS STA. 100+25 TO STA. 104+50

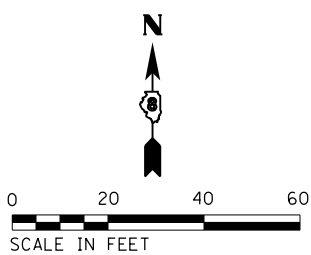
F.A.U. RTE. 8874	SECTION 16-00109-00-PV	COUNTY MADISON	TOTAL SHEETS 22	SHEET NO. 10
CENTER GROVE INTERSECTION			CONTRACT NO. 97670	
ILLINOIS FED. AID PROJECT				



EROSION CONTROL LEGEND

- LIMITS OF CONSTRUCTION
- PERIMETER EROSION BARRIER
SILT FILTER FENCE OR OTHER
AS APPROVED BY THE ENGINEER
- ◆ INLET AND PIPE PROTECTION

NOTE: ALL ITEMS SHALL BE CONSTRUCTED AS SHOWN ON STANDARD 280001 AND AS DIRECTED BY THE ENGINEER.



MODEL NAME = Default
 FILE NAME = H:\P\160914\Microstation\Sheets\08160914 - Sh.Eros Contr.Ldgn


OATES ASSOCIATES
 Consulting Engineers
 ILLINOIS DESIGN FIRM LICENSE NO: 184.001115

USER NAME = b.heil	DESIGNED -	REVISED -
PLOT SCALE = 48.0000' / in.	DRAWN -	REVISED -
PLOT DATE = 2/16/2018	CHECKED -	REVISED -
	DATE -	REVISED -

**STATE OF ILLINOIS
DEPARTMENT OF TRANSPORTATION**

EROSION CONTROL SHEET

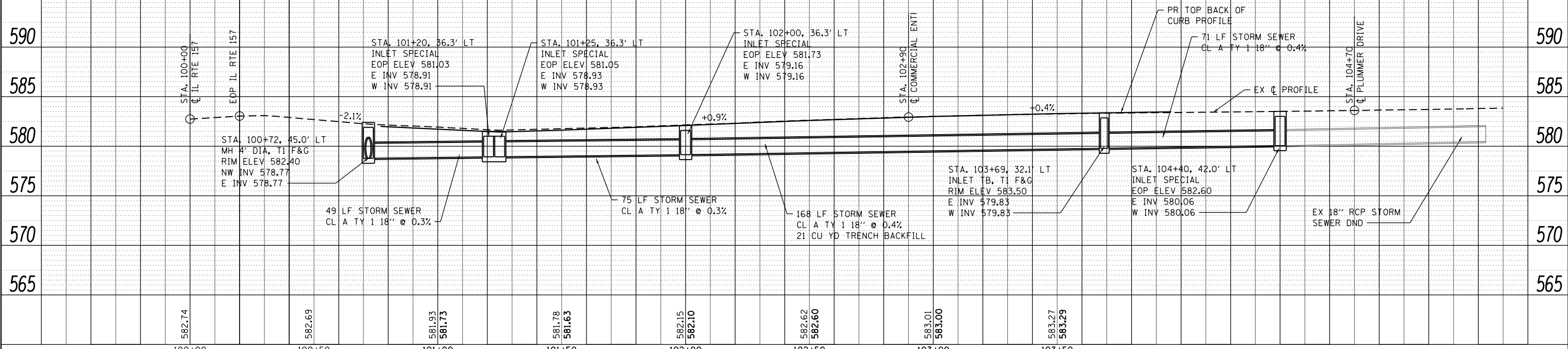
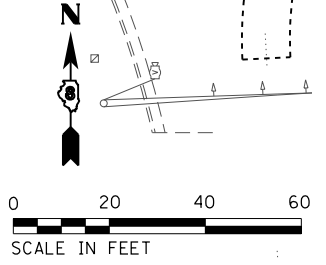
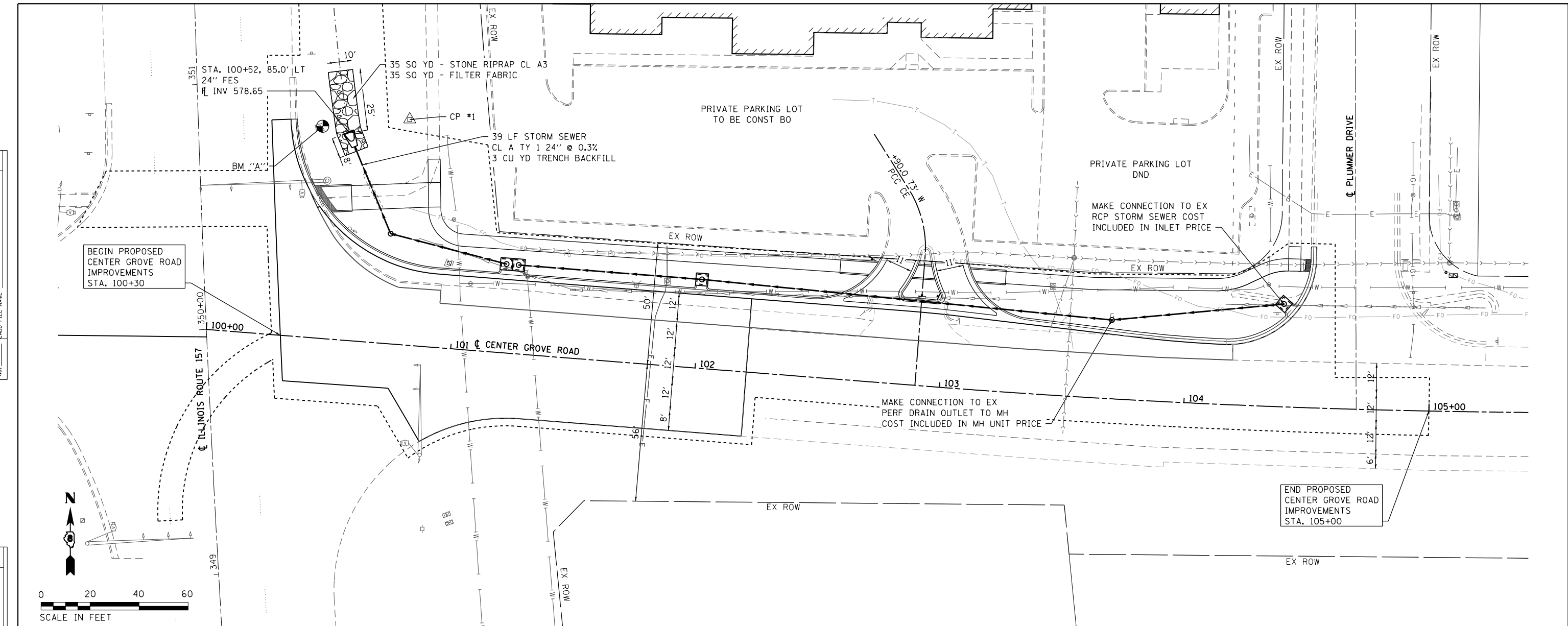
SCALE: 1" = 20' SHEET 1 OF 1 SHEETS STA. TO STA.

F.A.U. RTE.	SECTION	COUNTY	TOTAL SHEETS	SHEET NO.
8874	16-00109-00-PV	MADISON	22	11
CENTER GROVE INTERSECTION			CONTRACT NO. 97670	

ILLINOIS FED. AID PROJECT

PLAN	SURVEYED	DATE
	PLOTTED	
	GRADES CHECKED	
	STRUCTURE NOTATIONS CHECKED	
	NOTE BOOK NO.	
	CADD FILE NAME	

PROFILE	SURVEYED	DATE
	PLOTTED	
	GRADES CHECKED	
	STRUCTURE NOTATIONS CHECKED	
	NOTE BOOK NO.	
	CADD FILE NAME	



MODEL NAME = Default
 FILE NAME = H:\V\16894\Microstation\Sheets\0816894 - Sh-Drain.dgn

DATES ASSOCIATES
 Consulting Engineers
 ILLINOIS DESIGN FIRM LICENSE NO: 184.001115

USER NAME = b.heil	DESIGNED -	REVISED -
	DRAWN -	REVISED -
PLOT SCALE = 48.0000' / in.	CHECKED -	REVISED -
PLOT DATE = 2/16/2018	DATE -	REVISED -

**STATE OF ILLINOIS
 DEPARTMENT OF TRANSPORTATION**

DRAINAGE SHEET

SCALE: 1" = 20' SHEET 1 OF 1 SHEETS STA. 100+25 TO STA. 104+50

F.A.U. RTE.	SECTION	COUNTY	TOTAL SHEETS	SHEET NO.
8874	16-00109-00-PV	MADISON	22	12
CENTER GROVE INTERSECTION			CONTRACT NO. 97670	
ILLINOIS FED. AID PROJECT				

MODEL NAME = Default
 FILE NAME = H:\P\16894\Mapstation\Sheets\DB16894 - Sh1-Removal.dgn



USER NAME = brandon.ratermann	DESIGNED -	REVISED -
PLOT SCALE = 40.0000' / in.	DRAWN -	REVISED -
PLOT DATE = 1/26/2018	CHECKED -	REVISED -
	DATE -	REVISED -

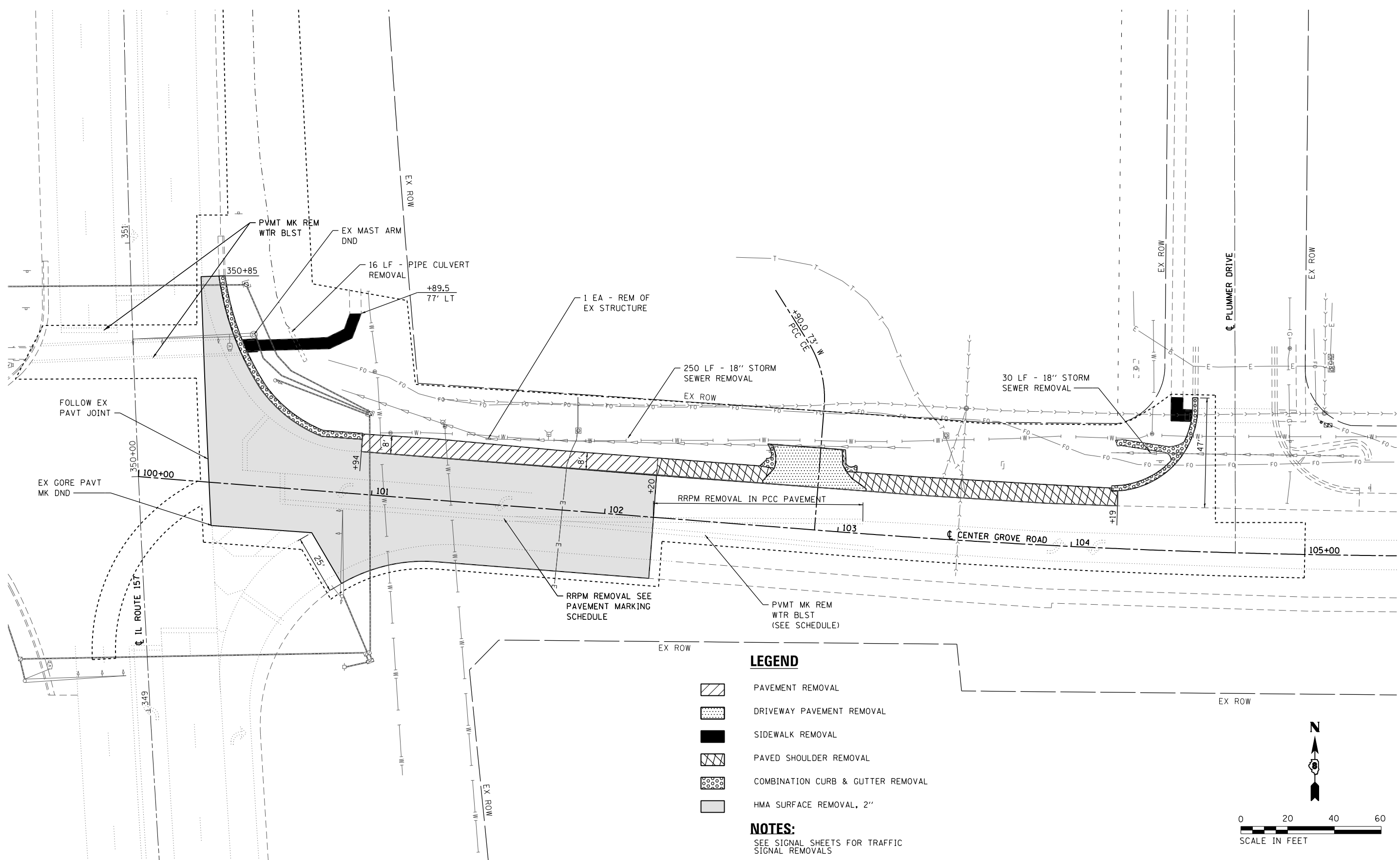
**STATE OF ILLINOIS
 DEPARTMENT OF TRANSPORTATION**

REMOVAL SHEET

SCALE: 1" = 20' SHEET 1 OF 1 SHEETS STA. TO STA.

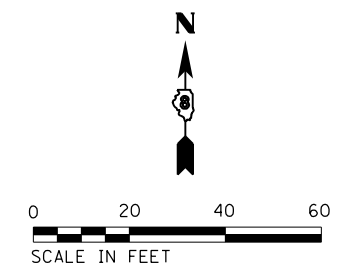
F.A.U. RTE.	SECTION	COUNTY	TOTAL SHEETS	SHEET NO.
8874	16-00109-00-PV	MADISON	22	13
CENTER GROVE INTERSECTION		CONTRACT NO. 97670		

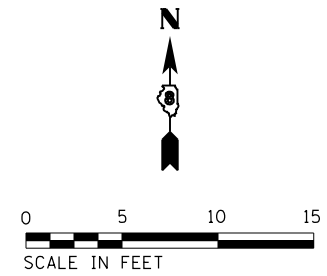
ILLINOIS FED. AID PROJECT



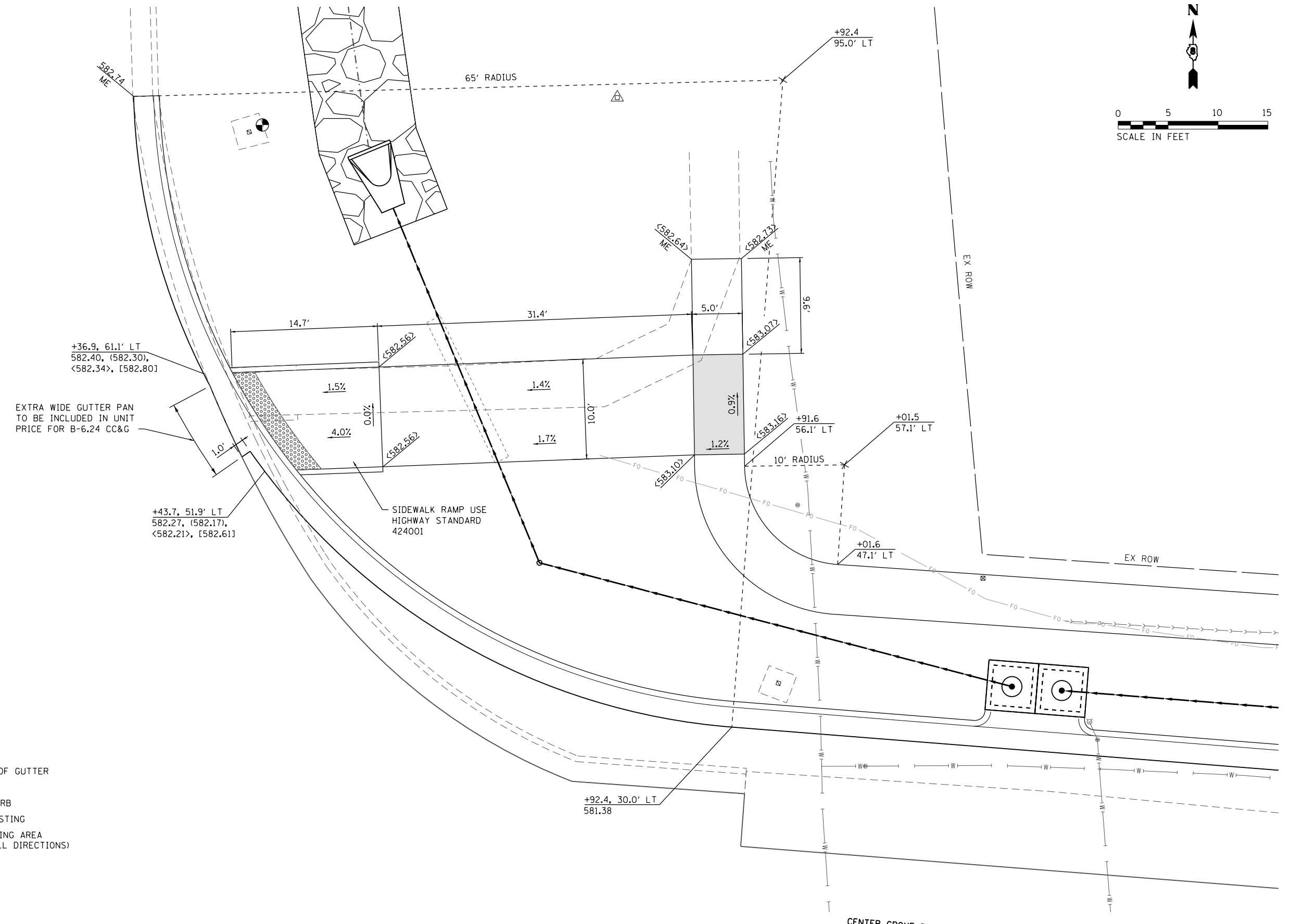
- LEGEND**
- PAVEMENT REMOVAL
 - DRIVEWAY PAVEMENT REMOVAL
 - SIDEWALK REMOVAL
 - PAVED SHOULDER REMOVAL
 - COMBINATION CURB & GUTTER REMOVAL
 - HMA SURFACE REMOVAL, 2"

NOTES:
 SEE SIGNAL SHEETS FOR TRAFFIC SIGNAL REMOVALS





IL ROUTE 157



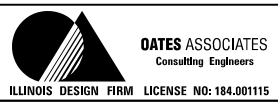
EXTRA WIDE GUTTER PAN
TO BE INCLUDED IN UNIT
PRICE FOR B-6.24 CC&G

SIDEWALK RAMP USE
HIGHWAY STANDARD
424001

DETAIL LEGEND

- XXX.XX PAVEMENT
- (XXX.XX) FLOWLINE OF GUTTER
- <XXX.XX> SIDEWALK
- [XXX.XX] TOP OF CURB
- ME MATCH EXISTING
- FLAT LANDING AREA
(2% MAX ALL DIRECTIONS)

MODEL NAME = Default
 FILE NAME = H:\P\16094\Microstation\Sheets\DB16094 - Sht. Int. Detail.dgn



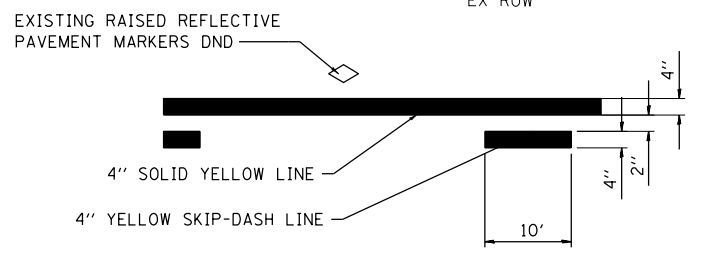
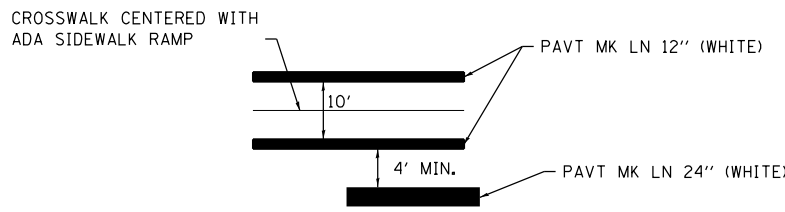
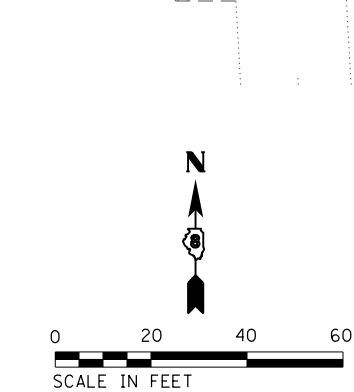
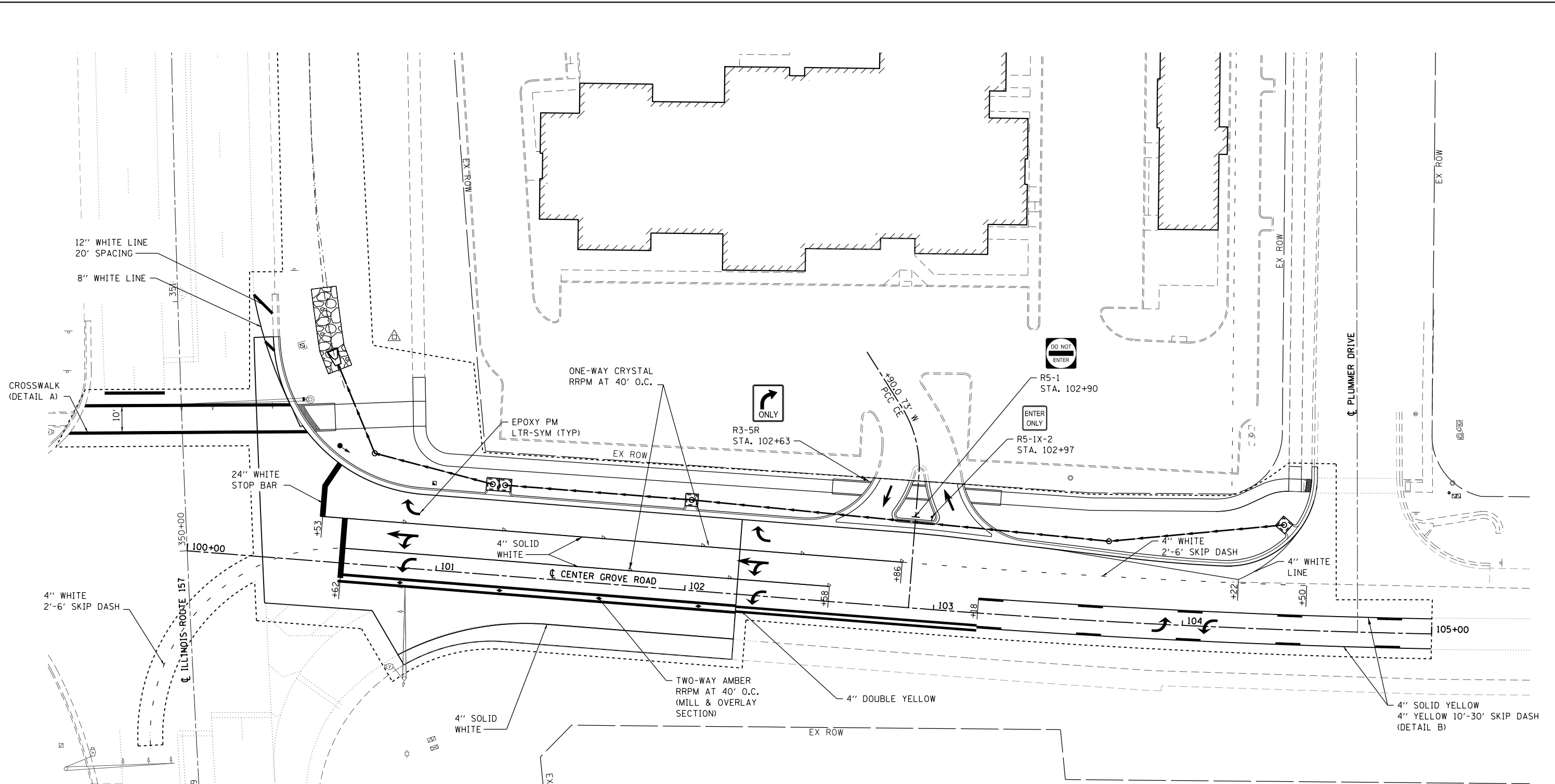
USER NAME = b.heil	DESIGNED -	REVISED -
PLOT SCALE = 10.0000' / 1"	DRAWN -	REVISED -
PLOT DATE = 2/16/2018	CHECKED -	REVISED -
	DATE -	REVISED -

**STATE OF ILLINOIS
DEPARTMENT OF TRANSPORTATION**

INTERSECTION DETAIL

SCALE: 1" = 5' SHEET 1 OF 1 SHEETS STA. TO STA.

F.A.U. RTE.	SECTION	COUNTY	TOTAL SHEETS	SHEET NO.
8874	16-00109-00-PV	MADISON	22	14
CENTER GROVE INTERSECTION			CONTRACT NO. 97670	
ILLINOIS FED. AID PROJECT				



TYPICAL APPLICATION FOR SOLID YELLOW, SKIP-DASH LANE LINES WITH RAISED REFLECTIVE PAVEMENT MARKERS

MODEL NAME = Default
 FILE NAME = H:\P\16094\Miscstation\Sheets\DB16094 - Sta.PVT MK.Stp.dgn
 ILLINOIS DESIGN FIRM LICENSE NO: 184.001115

OATES ASSOCIATES
 Consulting Engineers
 ILLINOIS DESIGN FIRM LICENSE NO: 184.001115

USER NAME = b.heil	DESIGNED -	REVISED -
PLOT SCALE = 48.0000' / in.	DRAWN -	REVISED -
PLOT DATE = 2/16/2018	CHECKED -	REVISED -
	DATE -	REVISED -

STATE OF ILLINOIS
DEPARTMENT OF TRANSPORTATION

PAVEMENT MARKING & SIGNING SHEET
 SCALE: 1" = 20' SHEET 1 OF 1 SHEETS STA. TO STA.

F.A.U. RTE.	SECTION	COUNTY	TOTAL SHEETS	SHEET NO.
8874	16-00109-00-PV	MADISON	22	15
CENTER GROVE INTERSECTION			CONTRACT NO. 97670	
ILLINOIS FED. AID PROJECT				

ELECTRICAL GENERAL NOTES

- PRIOR TO COMMENCING CONSTRUCTION OF ANY COMPONENT OF THE PROPOSED TRAFFIC SIGNAL SYSTEM, ALL UNDERGROUND UTILITIES SHALL BE FIELD LOCATED ACCORDING TO ARTICLE 107.31 OF THE "STANDARD SPECIFICATIONS FOR ROAD AND BRIDGE CONSTRUCTION". AGENCIES KNOWN TO HAVE FACILITIES WITHIN THE PROJECT LIMITS ARE LISTED IN THE GENERAL NOTES OF THE PLANS. CALL J.U.L.I.E. (800) 892-0123 ONE WEEK BEFORE PLANNING TO DIG. IT MAY BE NECESSARY TO HAND DIG TEST HOLES TO EXPOSE EXISTING UTILITIES AT SOME LOCATIONS.
- TRAFFIC SIGNAL CABLES SHALL BE #14 AWG STRANDED COPPER UNLESS OTHERWISE SPECIFIED. TERMINAL ENDS SHALL HAVE CRIMPED-ON RING TONGUE CONNECTORS.
- MOUNTING HARDWARE, SIGNAL POSTS AND BASES SHALL BE PAINTED BLACK ALUMINUM. BOLTS, SCREWS, NUTS AND WASHERS SHALL BE STAINLESS STEEL. ANTI-SEIZE PASTE COMPOUND SHALL BE USED ON ALL MOUNTING HARDWARE FIELD CONNECTIONS.
- THE QUANTITIES SHOWN FOR TRAFFIC SIGNAL CABLE IN CONDUIT AND REMOVAL OF ELECTRIC CABLE FROM CONDUIT ASSUME THAT ALL CABLE IN EXISTING CONDUIT WILL NEED TO BE REPLACED. IF IT IS DETERMINED IN THE FIELD THAT THIS CABLE IS SUITABLE FOR USE AND IT WILL NOT BE DAMAGED WHILE PULLING ADDITIONAL CABLE THROUGH THE CONDUIT, WORK ON THESE ITEMS WILL BE UNNECESSARY.
- THE LOCATION OF MAST ARM SUPPORTS SHALL BE APPROVED BY THE ENGINEER BEFORE FOUNDATIONS ARE CONSTRUCTED. MAST ARM POLES SHALL BE LOCATED A MINIMUM OF 10 FEET FROM THE EDGE OF PAVEMENT OR 2 FEET FROM THE EDGE OF SHOULDER, WHICHEVER DISTANCE IS GREATER. IN CURBED SECTIONS, THE MAST ARM POLES SHALL BE LOCATED A MINIMUM OF 5 FEET FROM THE FACE OF THE CURB. THESE DISTANCES ARE TO THE NEAR FACE OF THE MAST ARM POLE.
- THE LOCATION OF SIGNAL HEADS ON MAST ARMS SHALL BE APPROVED BY THE ENGINEER BEFORE MAST ARMS ARE INSTALLED.
- BACKPLATES SHALL BE ABS PLASTIC
- PROPOSED CONDUIT SHALL BE PVC UNLESS NOTED OTHERWISE. ALL CONDUIT SHALL BE PLACED AND BACKFILLED PRIOR TO CONSTRUCTION OF NEW PAVEMENT, SHOULDER AND CURB. NO ADDITIONAL COMPENSATION WILL BE ALLOWED FOR PUSHING OR PULLING CONDUIT AFTER SUCH WORK HAS BEEN COMPLETED.
- CONDUIT SPLICES WILL NOT BE PAID FOR SEPARATELY, BUT SHALL BE CONSIDERED PART OF THE NEW CONDUIT INSTALLATION.
- A 1/4" DIAMETER NYLON PULL ROPE SHALL BE INSTALLED IN ALL CONDUITS.
- HANDHOLES SHALL BE CAST-IN-PLACE PORTLAND CEMENT CONCRETE ACCORDING TO ARTICLE 814.03(g) OF THE "STANDARD SPECIFICATIONS FOR ROAD AND BRIDGE CONSTRUCTION". HANDHOLE COVERS SHALL BE SLOPED TO MATCH PROPOSED CONTOURS.
- SEE SPECIAL PROVISIONS FOR TRAFFIC CONTROL AND CONSTRUCTION STAGING REQUIREMENTS.
- THE FOLLOWING ABBREVIATIONS SUPPLEMENT OR SUPERCEDE HIGHWAY STANDARD 000001:

ABND	ABANDON
ALUM	ALUMINUM
BM	BRACKET MOUNTED
EQUIP	EQUIPMENT
GSC	GALVANIZED STEEL CONDUIT
MA	MAST ARM
MAM	MAST ARM MOUNTED
PED	PEDESTRIAN
PVC	POLYVINYL CHLORIDE CONDUIT
PB	PUSH-BUTTON
RELOC	RELOCATE
REC	REMOVE ELECTRICAL CABLE FROM CONDUIT
SH	SIGNAL HEAD
UC	UNDERGROUND CONDUIT

STANDARDS FOR TRAFFIC SIGNAL SHEETS

720001	SIGN PANEL MOUNTING DETAILS
720016	MAST ARM MOUNTED STREET NAME SIGNS
814001	HANDHOLES
857001	STANDARD PHASE DESIGNATION DIAGRAMS AND PHASE SEQUENCES
873001	TRAFFIC SIGNAL GROUNDING & BONDING
876001	PEDESTRIAN PUSH BUTTON POST
877002	STEEL MAST ARM ASSEMBLY AND POLE 56' THROUGH 75'
878001	CONCRETE FOUNDATION DETAILS
880006	TRAFFIC SIGNAL MOUNTING DETAILS
886001	DETECTOR LOOP INSTALLATIONS
886006	TYPICAL LAYOUTS FOR DETECTION LOOPS

TRAFFIC SIGNAL LEGEND

	PROPOSED SIGNAL HEAD WITH BACKPLATE (SEE HIGHWAY STANDARD 880006)
	EXISTING SIGNAL HEAD WITH BACKPLATE
	PROPOSED HANDHOLE
	EXISTING HANDHOLE
	EXISTING DOUBLE HANDHOLE
	PROPOSED CONDUIT: "T" TRENCH, "P" PUSHED, SIZE SPECIFIED
	EXISTING CONDUIT: SIZE SPECIFIED
	PVC POLYVINYL CHLORIDE CONDUIT
	GSC GALVANIZED STEEL CONDUIT
	REMOVE ELECTRIC CABLE FROM CONDUIT
	PROPOSED SIGN
	EXISTING MAST ARM
	PROPOSED MAST ARM
	EXISTING SIGNAL HEAD, PEDESTRIAN
	EXISTING PEDESTRIAN PUSHBUTTON DETECTOR
	EXISTING CONTROLLER
	PROPOSED STREET NAME SIGN/TRAFFIC SIGN MOUNTED ON MAST ARM
	EXISTING VIDEO DETECTOR

TRAFFIC SIGNAL SCHEDULE

CODE NO.	ITEM	UNIT	TOTAL QUANTITIES
81028350	UNDERGROUND CONDUIT, PVC, 2" DIA.	FOOT	100
81028370	UNDERGROUND CONDUIT, PVC, 3" DIA.	FOOT	79
81400700	HANDHOLE, PORTLAND CEMENT CONCRETE	EACH	1
87301215	ELECTRIC CABLE IN CONDUIT, SIGNAL NO. 14 2C	FOOT	567
87301225	ELECTRIC CABLE IN CONDUIT, SIGNAL NO. 14 3C	FOOT	1,176
87301245	ELECTRIC CABLE IN CONDUIT, SIGNAL NO. 14 5C	FOOT	1,876
87301255	ELECTRIC CABLE IN CONDUIT, SIGNAL NO. 14 7C	FOOT	699
87301705	ELECTRIC CABLE IN CONDUIT, COMMUNICATION NO. 18 3 PAIR	FOOT	595
87800100	CONCRETE FOUNDATION, TYPE A	FOOT	3
88040090	SIGNAL HEAD, POLYCARBONATE, LED, 1-FACE, 3-SECTION, MAST ARM MOUNTED	EACH	1
88102825	PEDESTRIAN SIGNAL HEAD, POLYCARBONATE, LED, 1-FACE, BRACKET MOUNTED WITH COUNT DOWN TIMER	EACH	2
88200100	TRAFFIC SIGNAL BACKPLATE	EACH	1
89500100	RELOCATE EXISTING SIGNAL HEAD	EACH	1
89501150	RELOCATE EXISTING TRAFFIC SIGNAL POST	EACH	1
89502200	MODIFY EXISTING CONTROLLER	EACH	1
89502300	REMOVE ELECTRIC CABLE FROM CONDUIT	FOOT	3,580
89502375	REMOVE EXISTING TRAFFIC SIGNAL EQUIPMENT	EACH	1
89502380	REMOVE EXISTING HANDHOLE	EACH	1
89502385	REMOVE EXISTING CONCRETE FOUNDATION	EACH	1
X8950450	REMOVE EXISTING UNDERGROUND CONDUIT	FOOT	189

MODEL NAME = Default
FILE NAME = H:\P\18094\Miscstation\Sheets\0816094 - Sht.Traffic_signal.dgn

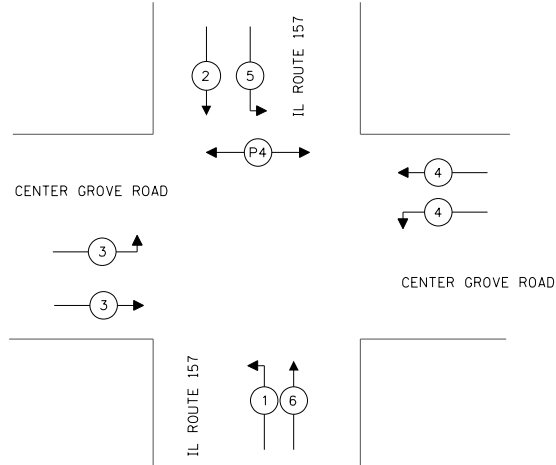


USER NAME = brandon.rotermann	DESIGNED -	REVISED -
	DRAWN -	REVISED -
PLOT SCALE = 40.0000' / in.	CHECKED -	REVISED -
PLOT DATE = 1/26/2018	DATE -	REVISED -

**STATE OF ILLINOIS
DEPARTMENT OF TRANSPORTATION**

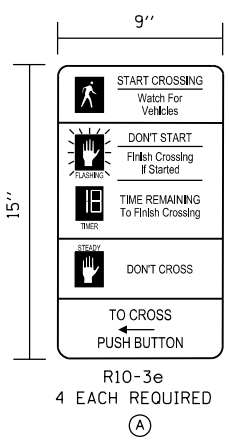
TRAFFIC SIGNAL SHEETS	
SCALE:	SHEET 1 OF 3 SHEETS STA. TO STA.

F.A.U. RTE.	SECTION	COUNTY	TOTAL SHEETS	SHEET NO.
8874	16-00109-00-PV	MADISON	22	16
CENTER GROVE INTERSECTION			CONTRACT NO. 97670	
ILLINOIS FED. AID PROJECT				



PHASE DESIGNATION DIAGRAM

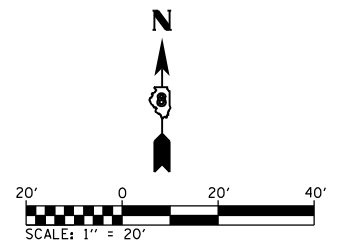
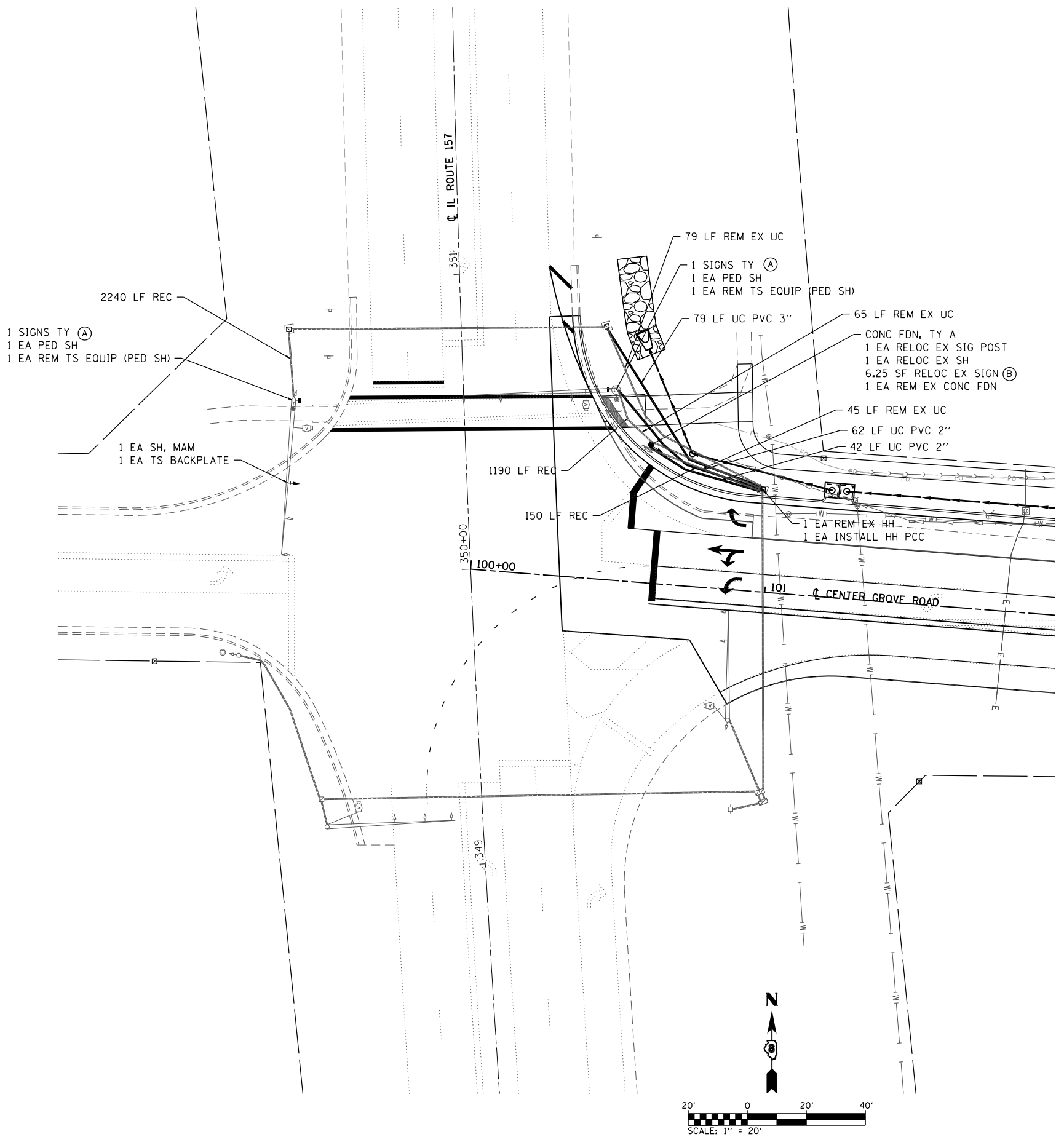
- LEGEND
- (X) VEHICULAR PHASE NUMBER, X
 - (PX) PEDESTRIAN PHASE NUMBER, X



EXISTING & PROPOSED SEQUENCE OF OPERATIONS

EXISTING FULL-ACTUATED CONTROLLER AND TYPE IV CABINET								
PHASE Ø	1	2	3	4	5	6	7	8
MOVEMENT	←	↓	↔	↔	↓	↑	NOT USED	NOT USED
CONCURRENT MOVEMENT PERMITTED	5 OR 6	5 OR 6	NONE	NONE	1 OR 2	1 OR 2		

PEDESTRIAN SIGNALS BY PUSH BUTTON OPERATION ONLY



MODEL NAME = Default; FILE NAME = H:\P\160914\Microstation\Sheets\08160914 - Sht.Traffic_signal.dgn

OATES ASSOCIATES
Consulting Engineers
ILLINOIS DESIGN FIRM LICENSE NO: 184.001115

USER NAME = b.heil	DESIGNED -	REVISED -
PLOT SCALE = 40.0000' / in.	DRAWN -	REVISED -
PLOT DATE = 2/16/2018	CHECKED -	REVISED -
	DATE -	REVISED -

STATE OF ILLINOIS
DEPARTMENT OF TRANSPORTATION

TRAFFIC SIGNAL SHEETS
SCALE: 1" = 20" SHEET 2 OF 3 SHEETS STA. TO STA.

F.A.U. RTE.	SECTION	COUNTY	TOTAL SHEETS	SHEET NO.
8874	16-00109-00-PV	MADISON	22	17
CENTER GROVE INTERSECTION			CONTRACT NO. 97670	
ILLINOIS FED. AID PROJECT				

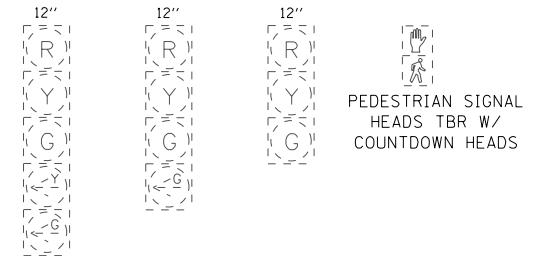
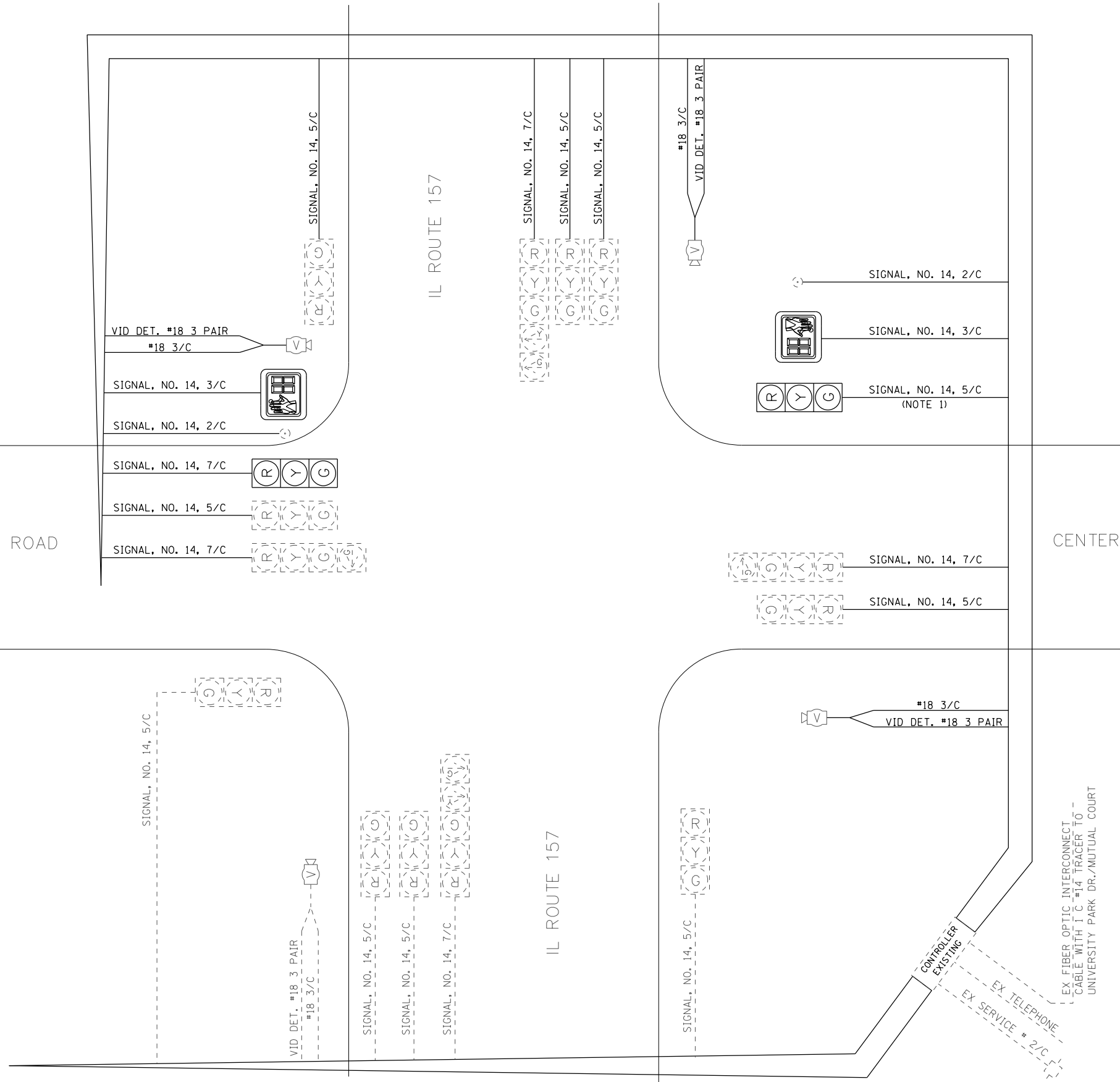


CENTER GROVE ROAD

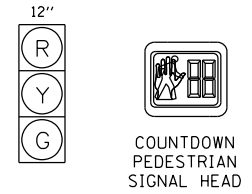
CENTER GROVE ROAD

IL ROUTE 157

IL ROUTE 157



EXISTING TRAFFIC SIGNAL FACES



PROPOSED TRAFFIC SIGNAL FACES

NOTE: 1. EXISTING SIGNAL HEADS AND BACKPLATES TO BE RE-USED.

CABLE DIAGRAM LEGEND

- PROPOSED ELECTRIC CABLE IN CONDUIT
- 2/C INDICATES NUMBER OF CONDUCTORS IN CABLE
- NO. 6 INDICATES AMERICAN WIRE (AWG) SIZE 6
- *6 LOOP DETECTOR NUMBER
- - - - - EXISTING ELECTRIC CABLE IN CONDUIT
- ⊕ EXISTING PEDESTRIAN PUSH BUTTON
- ⊞ EXISTING SERVICE INSTALLATION

MODEL NAME = Default
 FILE NAME = H:\P\16894\Miscstation\Sheets\0816094 - Sht.Traffic_signal.dgn



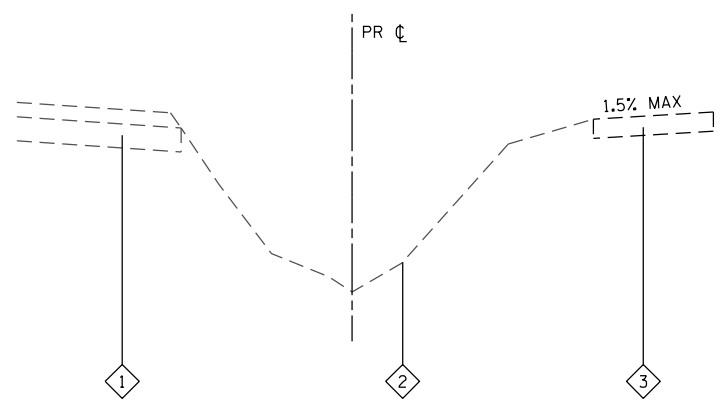
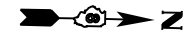
USER NAME = brandon.ratermann	DESIGNED -	REVISED -
DRAWN -	REVISED -	
PLOT SCALE = 40.0000' / in.	CHECKED -	REVISED -
PLOT DATE = 1/26/2018	DATE -	REVISED -

STATE OF ILLINOIS
 DEPARTMENT OF TRANSPORTATION

TRAFFIC SIGNAL SHEETS

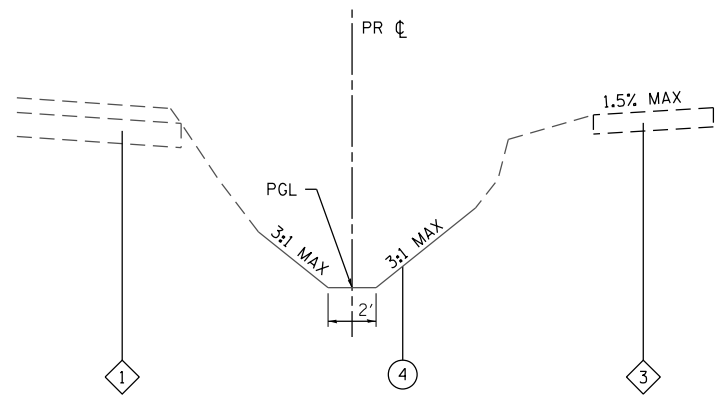
SCALE: SHEET 3 OF 3 SHEETS STA. TO STA.

F.A.U. RTE.	SECTION	COUNTY	TOTAL SHEETS	SHEET NO.
8874	16-00109-00-PV	MADISON	22	18
CENTER GROVE INTERSECTION			CONTRACT NO. 97670	
ILLINOIS FED. AID PROJECT				



EXISTING IL ROUTE 157 DITCH

STA. 0+00 TO STA. 2+20
(NOT TO SCALE)

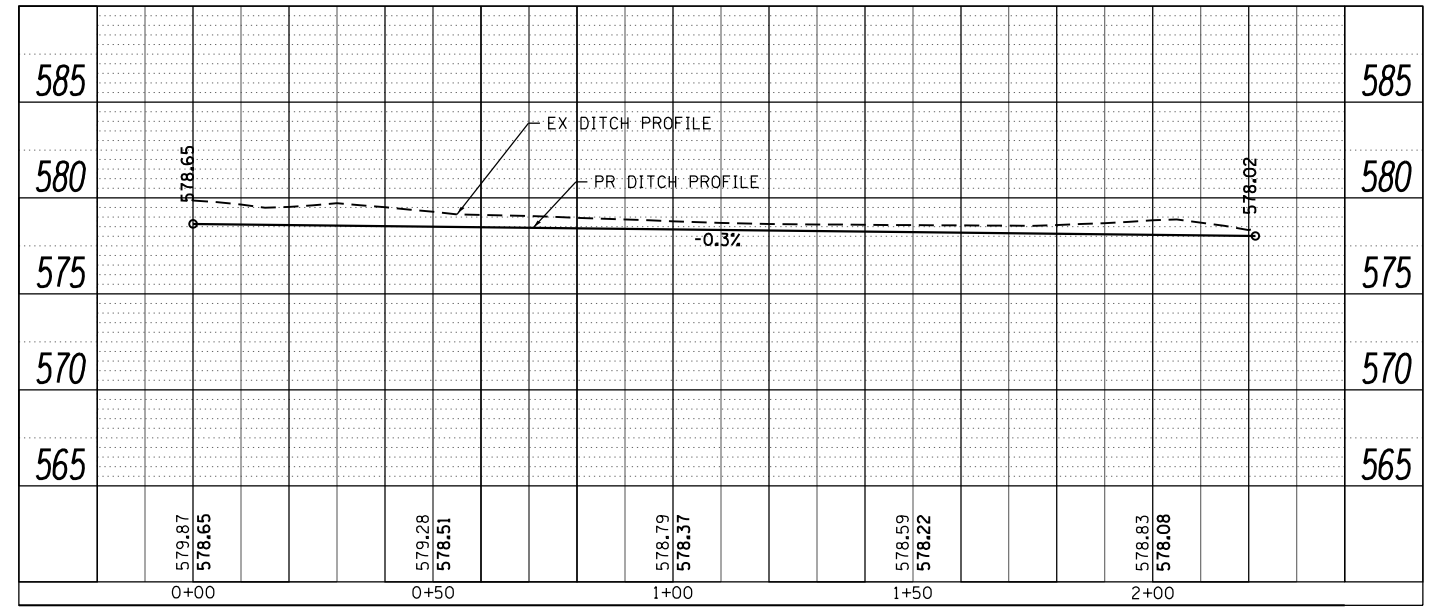
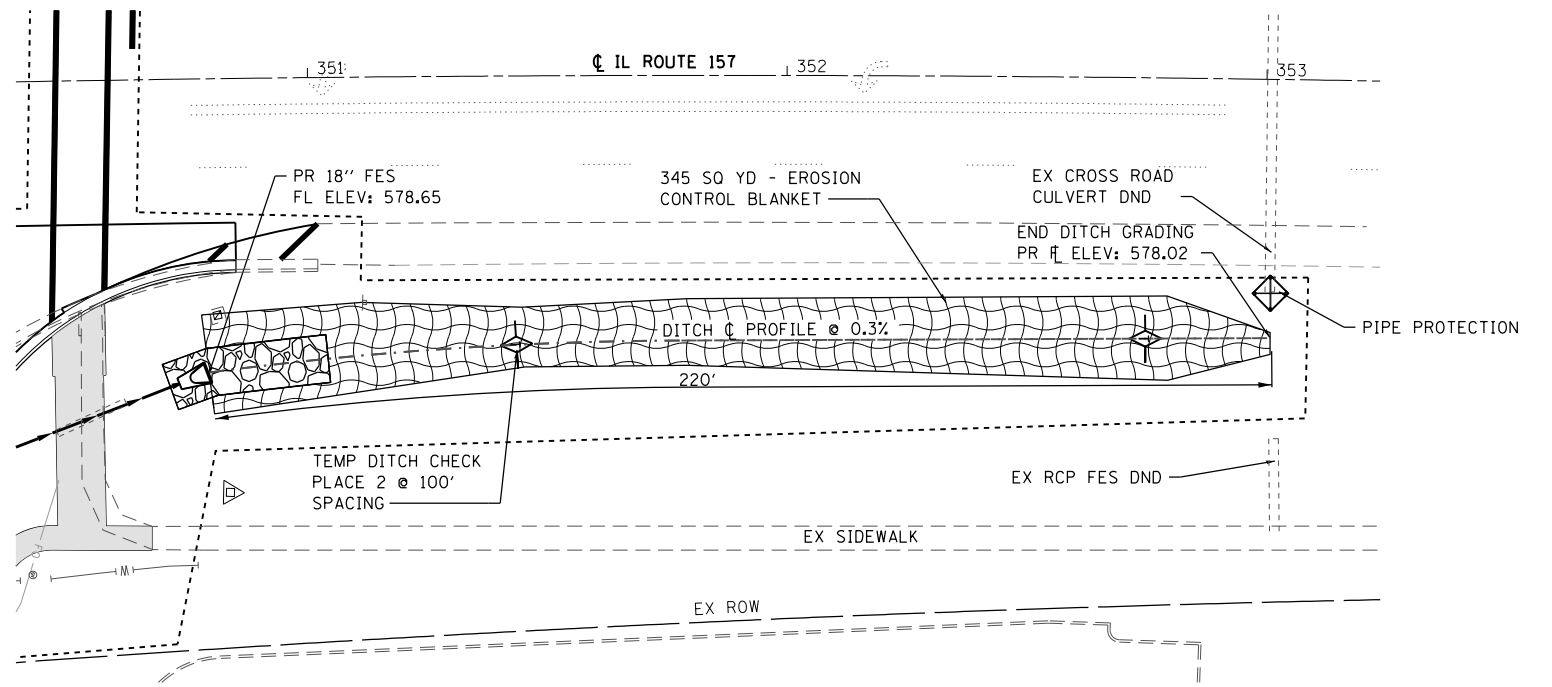


PROPOSED IL ROUTE 157 DITCH

STA. 0+00 TO STA. 2+20
(NOT TO SCALE)

TYPICAL SECTION LEGEND

- ① EXISTING BITUMINOUS SHOULDER
- ② EXISTING EARTH DITCH
- ③ EXISTING PCC SIDEWALK
- ④ PROPOSED EARTH DITCH



MODEL NAME = Default
FILE NAME = H:\P\16094\Miscstation\Sheets\DB16094 - Sh.Ditch Detail.dgn



USER NAME = b.heil	DESIGNED -	REVISED -
PLOT SCALE = 40.0000' / in.	DRAWN -	REVISED -
PLOT DATE = 2/16/2018	CHECKED -	REVISED -
	DATE -	REVISED -

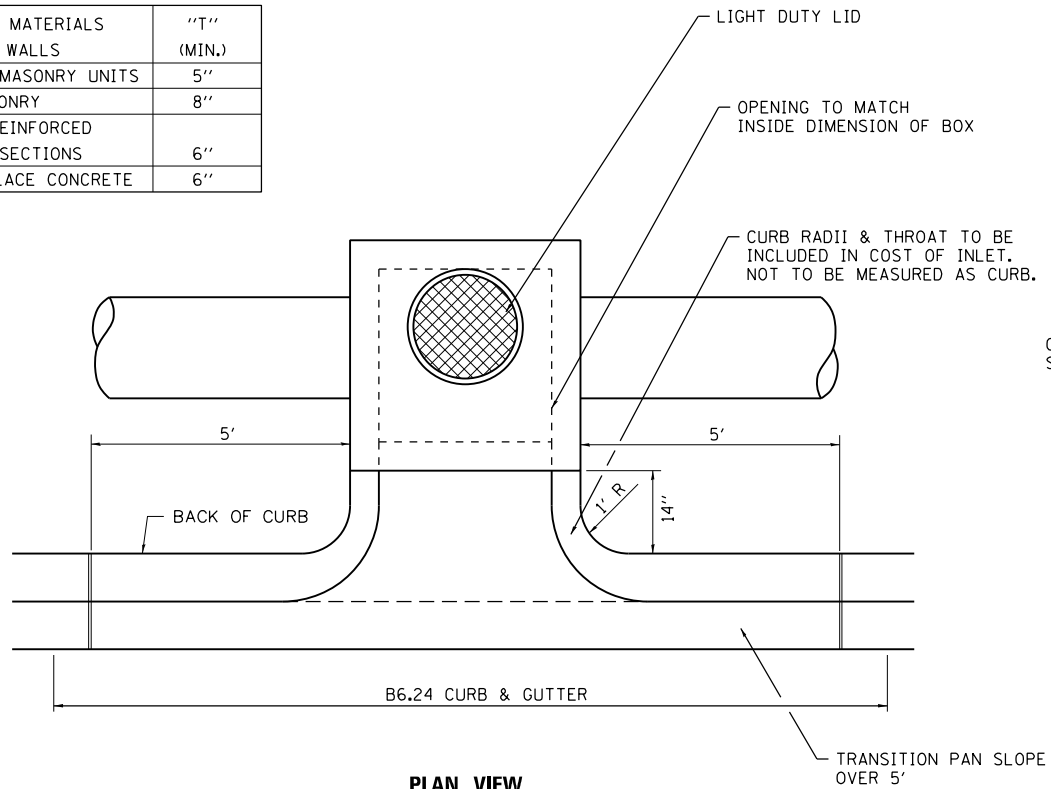
**STATE OF ILLINOIS
DEPARTMENT OF TRANSPORTATION**

DITCH GRADING DETAIL

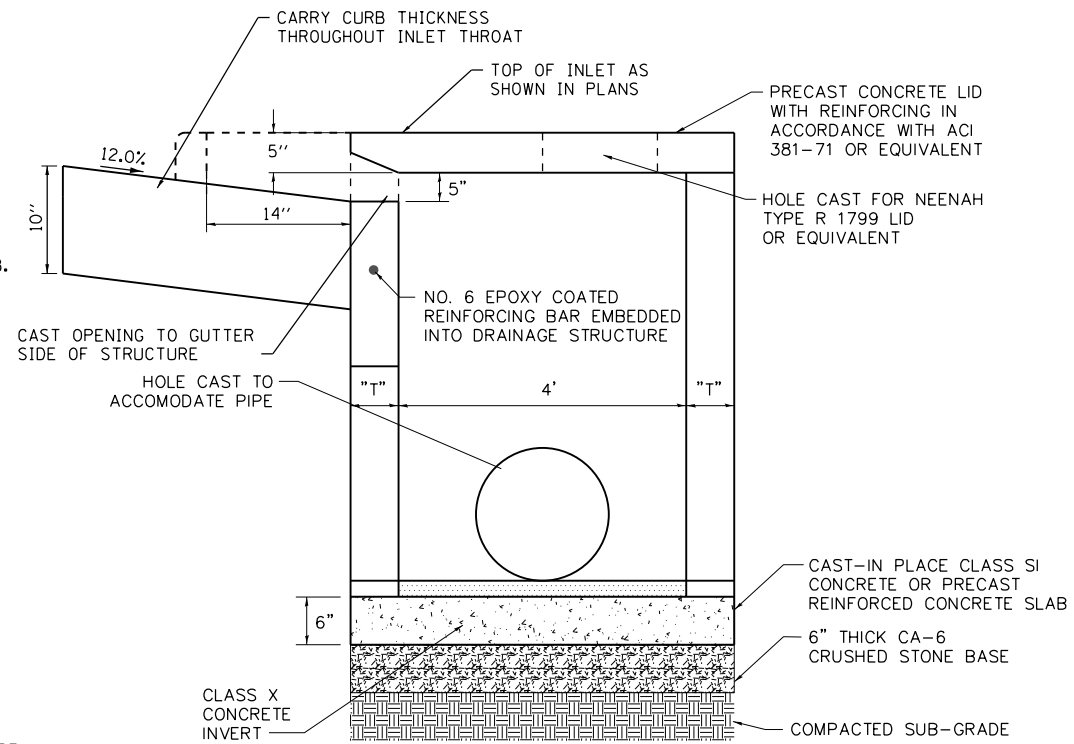
SCALE: 1" = 20' SHEET 1 OF 1 SHEETS STA. TO STA.

F.A.U. RTE. 8874	SECTION 16-00109-00-PV	COUNTY MADISON	TOTAL SHEETS 22	SHEET NO. 19
CENTER GROVE INTERSECTION		CONTRACT NO. 97670		
ILLINOIS FED. AID PROJECT				

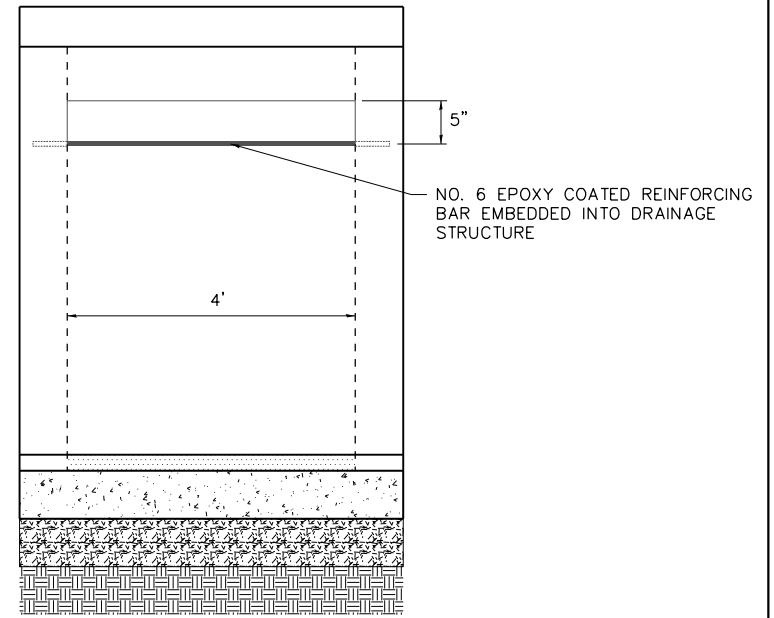
ALTERNATE MATERIALS FOR INLET WALLS	"T" (MIN.)
CONCRETE MASONRY UNITS	5"
BRICK MASONRY	8"
PRECAST REINFORCED CONCRETE SECTIONS	6"
CAST-IN-PLACE CONCRETE	6"



PLAN VIEW
(NOT TO SCALE)

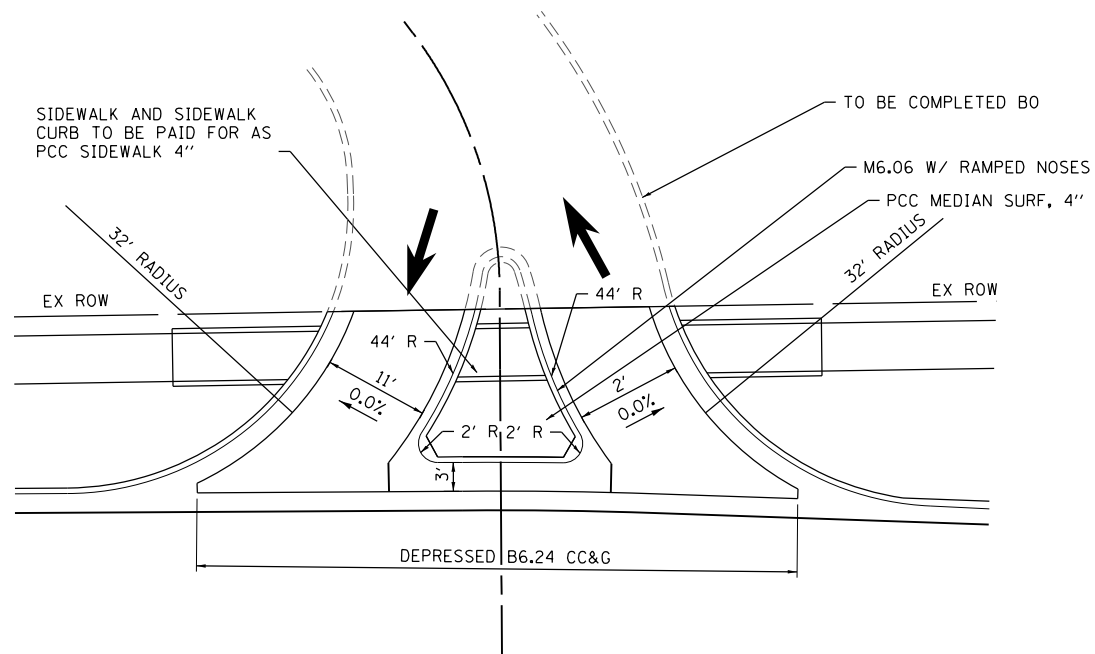


SIDE VIEW
(NOT TO SCALE)



BACK OF INLET
(NOT TO SCALE)

INLET SPECIAL
(NOT TO SCALE)

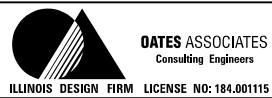


COMMERCIAL ENTRANCE AT 102+90 LT
(NOT TO SCALE)

NOTES:

SEE CROSS SECTIONS FOR LONGITUDINAL SLOPE OF ENTRANCE

MODEL NAME = Default
FILE NAME = H:\P\18094\Mapstation\Sheets\0816094 - Sht. Detail.dgn



USER NAME = brandon.ratermann	DESIGNED -	REVISED -
PLOT SCALE = 40.0000' / in.	DRAWN -	REVISED -
PLOT DATE = 1/26/2018	CHECKED -	REVISED -
	DATE -	REVISED -

STATE OF ILLINOIS
DEPARTMENT OF TRANSPORTATION

CONSTRUCTION DETAILS

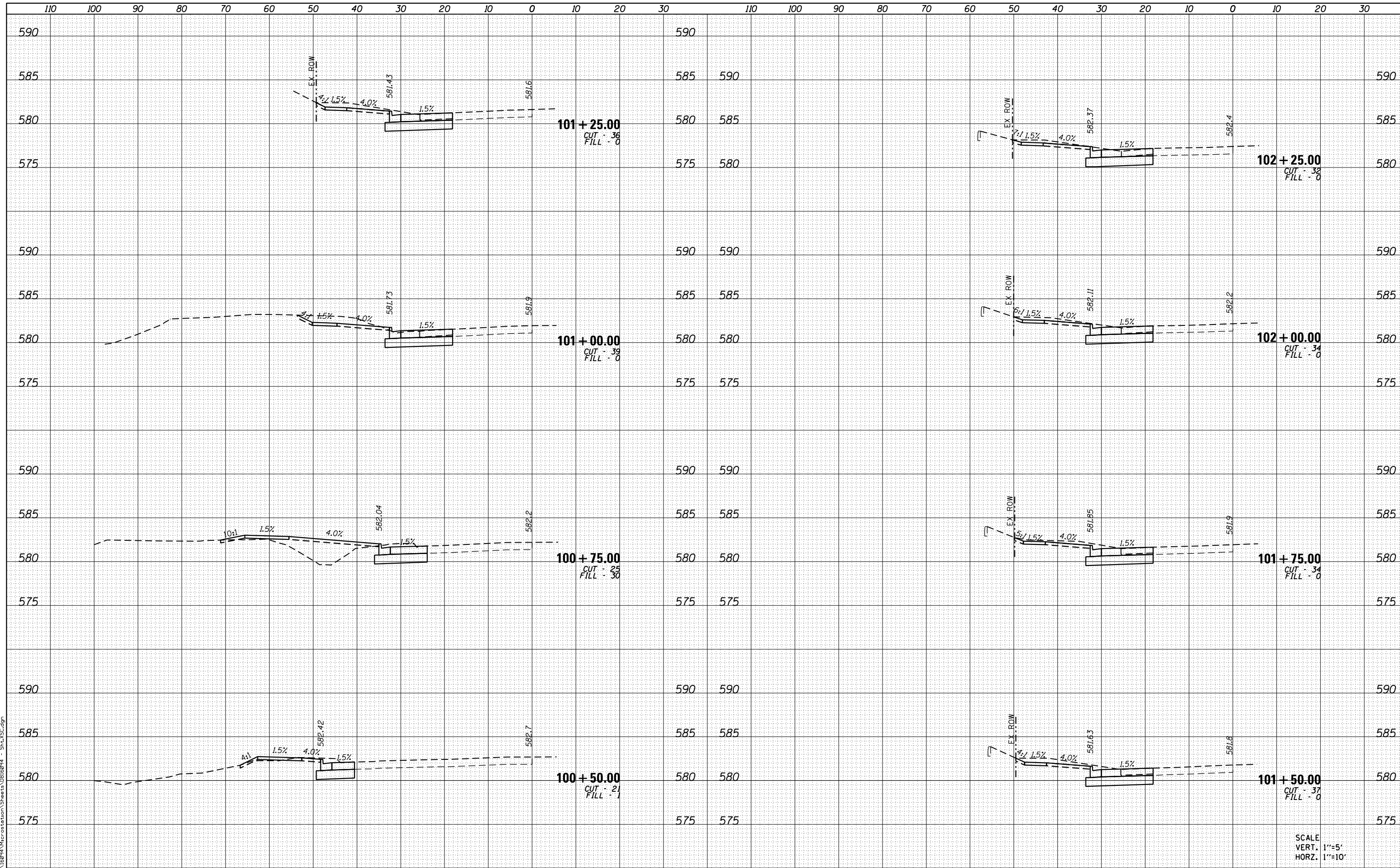
SCALE: SHEET OF SHEETS STA. TO STA.

F.A.U. RTE.	SECTION	COUNTY	TOTAL SHEETS	SHEET NO.
8874	16-00109-00-PV	MADISON	22	20
CENTER GROVE INTERSECTION			CONTRACT NO. 97670	
ILLINOIS FED. AID PROJECT				

DATE	
BY	
FINAL SURVEY	SURVEYED
NOTE BOOK	PLOTTED
NO.	TEMPLATE
	AREAS CHECKED
	AREAS CHECKED

DATE	
BY	
ORIGINAL SURVEY	SURVEYED
NOTE BOOK	PLOTTED
NO.	TEMPLATE
	AREAS CHECKED
	AREAS CHECKED

MODEL NAME = D:\Final
 FILE NAME = H:\P\8874\Microstation\Sheets\0816994 - Sta. 102.dgn



SCALE
 VERT. 1"=5'
 HORZ. 1"=10'



USER NAME = brandon.rotermann
 DESIGNED -
 DRAWN -
 CHECKED -
 DATE -

DESIGNED -
 REVISIONS -
 REVISIONS -
 REVISIONS -
 REVISIONS -

STATE OF ILLINOIS
 DEPARTMENT OF TRANSPORTATION

CROSS SECTION SHEETS

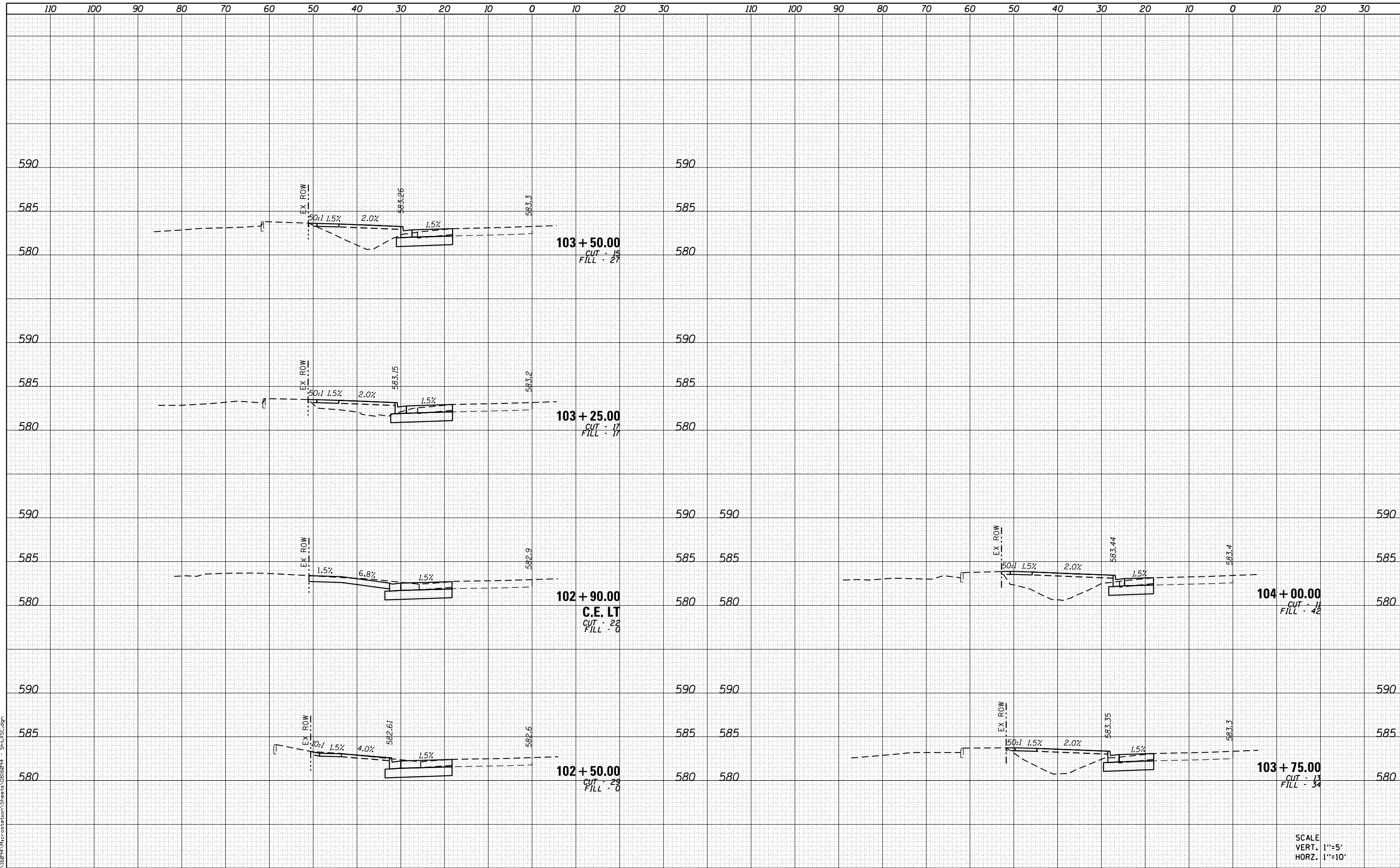
SCALE: SHEET 1 OF 2 SHEETS STA. 100+50.00 TO STA. 102+25.00

F.A.U. RTE.	SECTION	COUNTY	TOTAL SHEETS	SHEET NO.
8874	16-00109-00-PV	MADISON	22	21
CENTER GROVE INTERSECTION			CONTRACT NO. 97670	
ILLINOIS FED. AID PROJECT				

DATE	
BY	
FINAL SURVEY	SURVEYED
NOTE BOOK	PLOTTED
NO.	TEMPLATE
	AREAS CHECKED
	AREAS CHECKED

DATE	
BY	
ORIGINAL SURVEY	SURVEYED
NOTE BOOK	PLOTTED
NO.	TEMPLATE
	AREAS CHECKED
	AREAS CHECKED

MODEL NAME = D:\Final\H:\P\8874\Microstation\Sheets\0816994 - Sta.dwg
 FILE NAME =



USER NAME = brandon.rotermann	DESIGNED -	REVISED -
PLOT SCALE = 20.0000' / in.	DRAWN -	REVISED -
PLOT DATE = 1/26/2018	CHECKED -	REVISED -
	DATE -	REVISED -

**STATE OF ILLINOIS
DEPARTMENT OF TRANSPORTATION**

SCALE:	SHEET 2 OF 2 SHEETS	STA. 102+50.00 TO STA. 104+00.00
--------	---------------------	----------------------------------

F.A.U. RTE.	SECTION	COUNTY	TOTAL SHEETS	SHEET NO.
8874	16-00109-00-PV	MADISON	22	22
CENTER GROVE INTERSECTION			CONTRACT NO. 97670	
ILLINOIS FED. AID PROJECT				

SCALE
VERT. 1"=5'
HORZ. 1"=10'