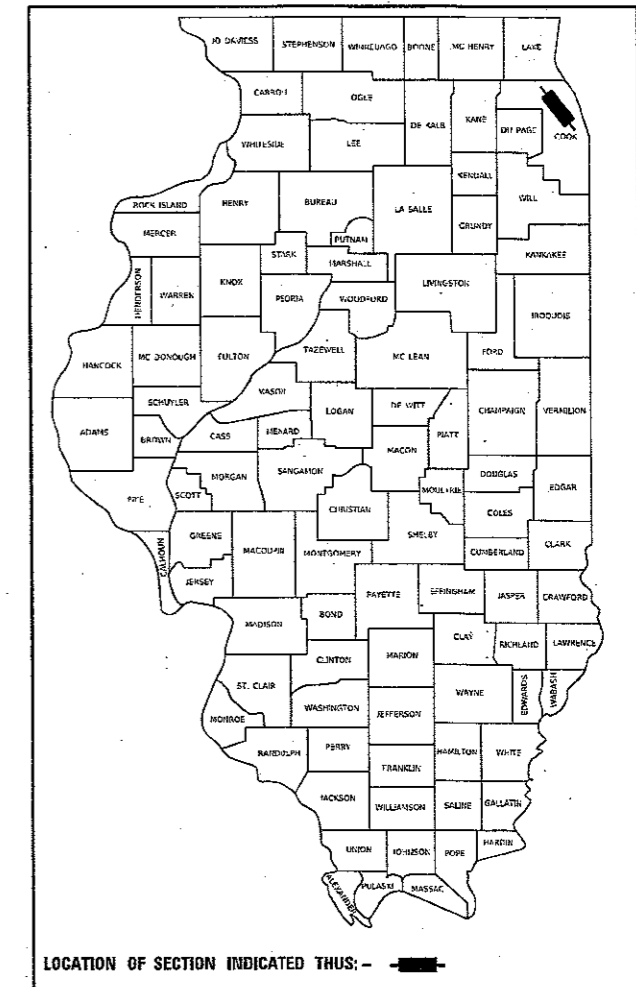


STATE OF ILLINOIS  
DEPARTMENT OF TRANSPORTATION

F.A.I. RTE.	SECTION	COUNTY	TOTAL SHEETS	SHEET NO.
94	2017-0431	COOK	16	1
		ILLINOIS	CONTRACT NO. 62F70	

D-91-028-18



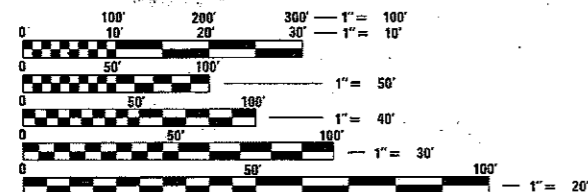
FOR INDEX OF SHEETS, SEE SHEET NO. 2

PROJECT IS LOCATED IN:  
THE CITY OF CHICAGO

# PROPOSED HIGHWAY PLANS

ROUTE: FAI 94: I-90 /94 ( KENNEDY EXPRESSWAY )  
SECTION 2017-0431  
S/O KIMBALL AVENUE TO N/O ADDISON STREET  
DIAMOND GROOVING  
PROJECT: HSIP-SMER(913)  
COOK COUNTY

C-91-038-18

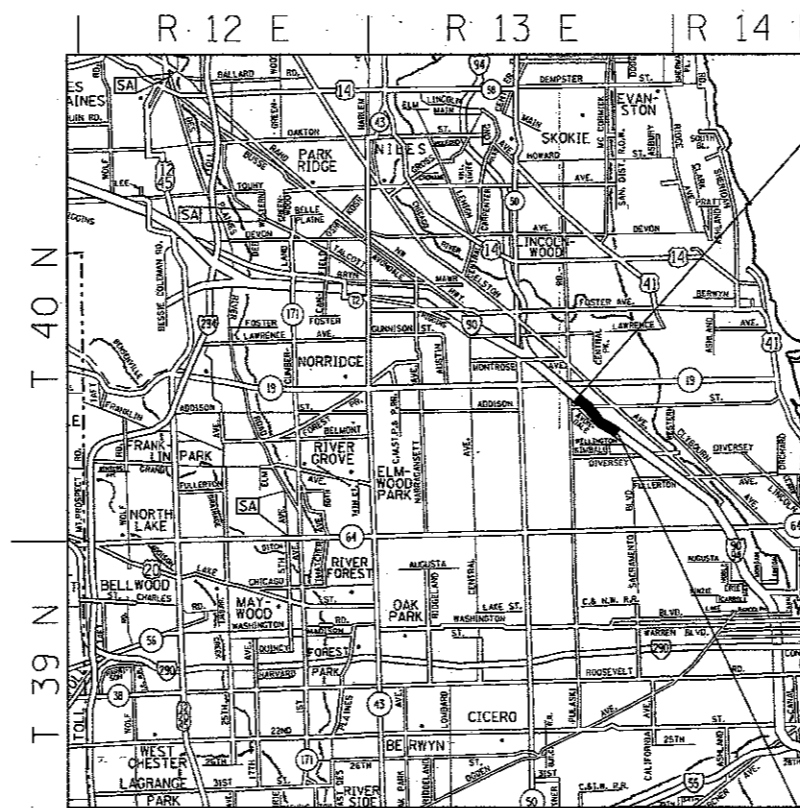


FULL SIZE PLANS HAVE BEEN PREPARED USING STANDARD ENGINEERING SCALES. REDUCED SIZED PLANS WILL NOT CONFORM TO STANDARD SCALES. IN MAKING MEASUREMENTS ON REDUCED PLANS, THE ABOVE SCALES MAY BE USED.

C.U.A.N.  
CHICAGO UTILITY ALERT NETWORK  
(312)744-7000

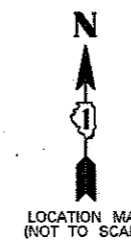
PROJECT ENGINEER: DAN WILGREEN (847)705-4240  
PROJECT MANAGER: FAWAD AQUEEL (847)705-4247

CONTRACT NO. 62F70



GROSS AND NET LENGTH = 5,610 FT. = 1.06 MILES

PROJECT ENDS:  
STATION 62+26



TRAFFIC DATA:  
2017 ADT = 214,600  
SPEED LIMIT = 55 MPH

PROJECT BEGINS:  
STATION 6+16

STATE OF ILLINOIS  
DEPARTMENT OF TRANSPORTATION

SUBMITTED 12-4 2017  
*[Signature]*  
REGIONAL ENGINEER

Feb 2 2018  
*[Signature]*  
ENGINEER OF DESIGN AND ENVIRONMENT

Feb 2 2018  
*[Signature]*  
DIRECTOR OF PROGRAM DEVELOPMENT

PRINTED BY THE AUTHORITY  
OF THE STATE OF ILLINOIS

**INDEX OF SHEETS**

SHEET NO.	DESCRIPTION
1	COVER SHEET
2	INDEX OF SHEETS, STATE STANDARDS, AND GENERAL NOTES
3	SUMMARY OF QUANTITIES
4	EXISTING AND PROPOSED TYPICAL SECTIONS
5-8	ROADWAY PLANS
9-12	EXISTING ELECTRICAL SYSTEM SHEETS (FOR INFORMATION ONLY)
13	ENTRANCE AND EXIT RAMP CLOSURE DETAILS (TC-08)
14	TRAFFIC CONTROL DETAILS FOR FREEWAY SINGLE AND MULTIPLE LANE WEAVE (TC-09)
15	TRAFFIC CONTROL DETAILS FOR FREEWAY SHOULDER CLOSURES AND PARTIAL RAMP CLOSURES (TC-17)
16	FREEWAY/EXPRESSWAY SIGNING FOR FLAGGING OPERATIONS AT WORK ZONE OPENINGS ON FREEWAYS/EXPRESSWAYS (TC-18)

**STATE STANDARDS**

STANDARD NO.	DESCRIPTION
000001-06	TYPICAL SYMBOLS, ABBREVIATIONS AND PATTERNS
701400-09	APPROACH TO LANE CLOSURE, FREEWAY/EXPRESSWAY
701401-11	LANE CLOSURE, FREEWAY/EXPRESSWAY
701411-09	LANE CLOSURE, MULTILANE, AT ENTRANCE OR EXIT RAMP, FOR SPEEDS ≥ 45 MPH
701428-01	TRAFFIC CONTROL SETUP AND REMOVAL FREEWAY/EXPRESSWAY
701446-09	TWO LANE CLOSURE, FREEWAY/EXPRESSWAY
701901-07	TRAFFIC CONTROL DEVICES

**GENERAL NOTES**

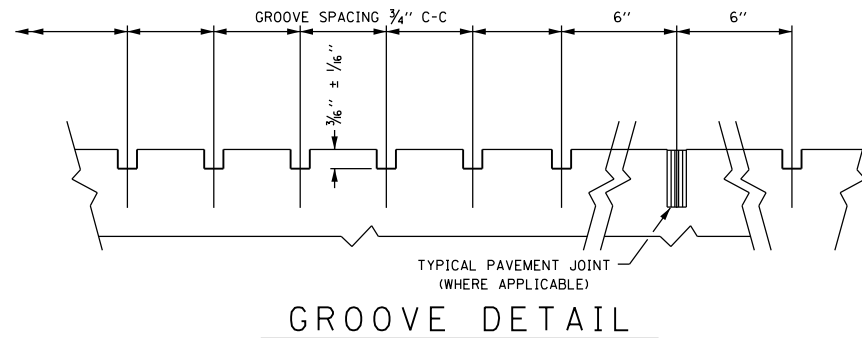
- IT SHALL BE THE CONTRACTOR'S RESPONSIBILITY TO VERIFY ALL DIMENSIONS AND CONDITIONS EXISTING IN THE FIELD PRIOR TO CONSTRUCTION AND ORDERING OF MATERIALS.
- THE CONTRACTOR WILL NOT BE ALLOWED TO SET UP A YARD OR FIELD OFFICE ON STATE PROPERTY WITHOUT THE WRITTEN PERMISSION OF THE DEPARTMENT.
- THE RESIDENT ENGINEER SHALL CONTACT JOSEPH WALTER GAYTON III OF DISTRICT 1 BUREAU OF TRAFFIC ELECTRICAL OPERATIONS AT (847) 705-4390 A MINIMUM OF 72 HOURS IN ADVANCE OF BEGINNING WORK TO COORDINATE GAP LOCATIONS OF ELECTRICAL EQUIPMENT WITHIN PROJECT LIMITS.
- THE CONTRACTOR SHALL CONTACT THE DISTRICT ONE TRAFFIC CONTROL SUPERVISOR AT (847) 705-4155 A MINIMUM OF 72 HOURS IN ADVANCE OF BEGINNING WORK.
- THE CONTRACTOR SHALL USE CARE WHEN PAVEMENT GROOVING NEAR ANY EXISTING ITEMS WHICH WILL REMAIN. ANY DAMAGE DONE BY THE CONTRACTOR TO EXISTING ITEMS TO REMAIN, INCLUDING PAVEMENT MARKINGS, LOOPS, AND SENSORS, SHALL BE REPLACED AT THE CONTRACTOR'S EXPENSE.
- DO NOT SCALE PLANS FOR CONSTRUCTION DIMENSIONS.

**CITY OF CHICAGO NOTES**

- BEFORE STARTING ANY EXCAVATION, THE CONTRACTOR SHALL CALL "C.U.A.N." (CHICAGO UTILITY ALERT NETWORK) AT (312)744-7000 FOR FIELD LOCATIONS OF BURIED ELECTRIC, TELEPHONE AND GAS UTILITIES. (48 HOUR NOTIFICATION REQUIRED).
- THE CONTRACTOR SHALL COORDINATE CONSTRUCTION ACTIVITIES WITH UTILITY COMPANIES AND THE CITY OF CHICAGO.
- OPEN LID DRAINAGE STRUCTURES SHALL NOT BE CLOSED, COVERED OR OTHERWISE OBSTRUCTED DURING CONSTRUCTION OF THIS ROADWAY WITHOUT THE WRITTEN PERMISSION FROM THE CITY OF CHICAGO.

FILE NAME =	USER NAME = pencepl	DESIGNED - PLP	REVISED -	<b>STATE OF ILLINOIS DEPARTMENT OF TRANSPORTATION</b>	<b>INDEX OF SHEETS, STATE STANDARDS, &amp; GENERAL NOTES</b>			F.A.I. RTE.	SECTION	COUNTY	TOTAL SHEETS	SHEET NO.
pa\IL084EBIDINTEG\Illinois.gov\PIDOT\Documents\DOT Offices\District 1\Projects\District 1\Design\102818-ent-gennote.dgn			REVISED -		<b>I-90/94 (KENNEDY EXPY)- SO KIMBALL AVENUE TO NO ADDISON STREET</b>			94	2017-043I	COOK	16	2
Default	PLOT SCALE = 100.0000' / 1".	CHECKED -	REVISED -		SCALE: SHEET OF SHEETS STA. TO STA.			<b>CONTRACT NO. 62F70</b>				
	PLOT DATE = 12/6/2017	DATE -	REVISED -		ILLINOIS FED. AID PROJECT							





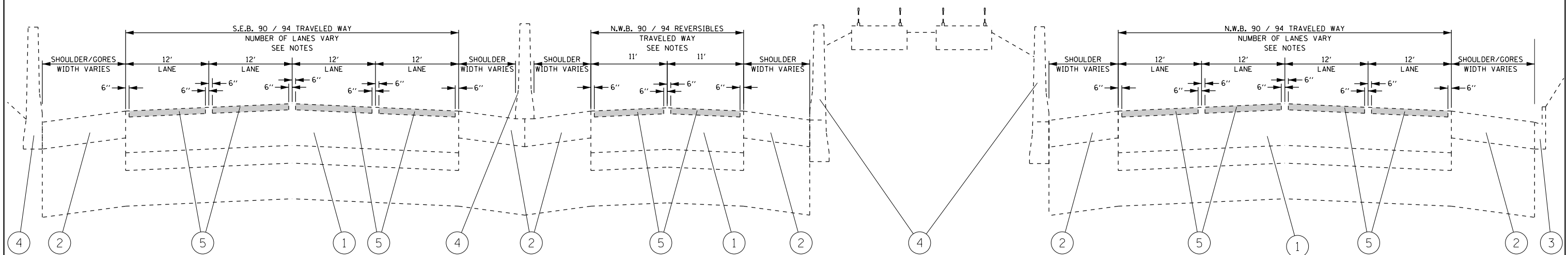
GROOVE DETAIL

NOTES

- 1.) TYPICAL CROSS SECTION AND GROOVE DETAIL IS FOR INFORMATION ONLY. TYPICAL SECTION VARIES THROUGHOUT IMPROVEMENT AREA.
- 2.) REFER TO THE "PAVEMENT GROOVING" SPECIAL PROVISION.
- 3.) THE PAVEMENT GROOVING PATTERN SHOULD BE 1/8 INCH WIDE AND 3/16 INCH ± 1/16 INCH DEEP AT 3/4 INCH CENTERS.
- 4.) PROPOSED PAVEMENT GROOVING (SEE GROOVE DETAIL)
- 5.) PAVEMENT GROOVING LIMITS DO NOT INCLUDE GORE AREAS OR SHOULDERS.
- 6.) SUCCESSIVE PASSES OF THE GROOVING MACHINE SHALL NOT OVERLAP.
- 7.) THE CONTRACTOR SHALL MAINTAIN THE EXISTING CROSS SLOPES.

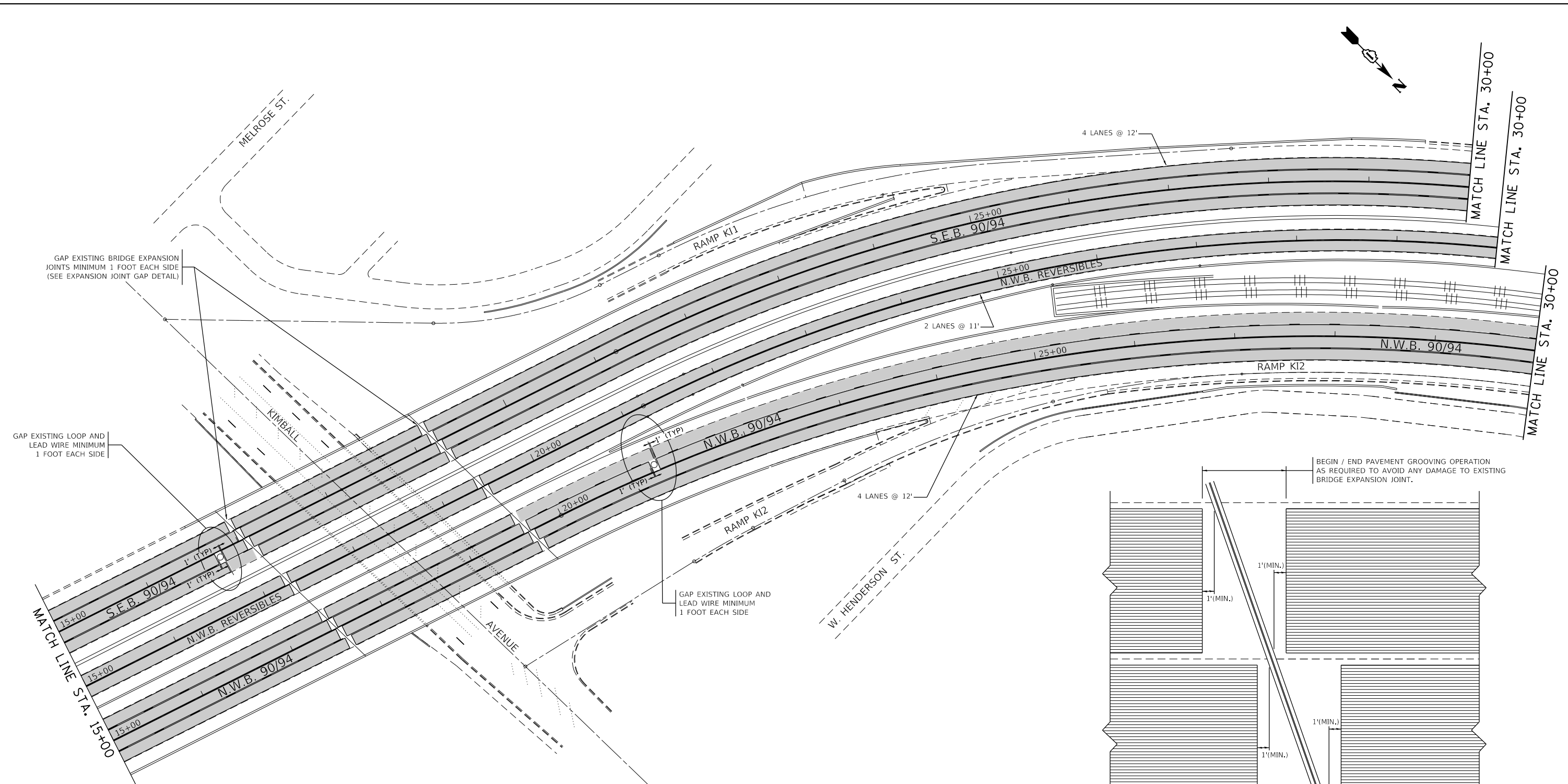
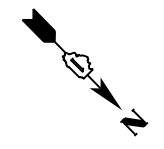
LEGEND

- ① EXISTING CONTINUOUSLY REINFORCED CONCRETE PAVEMENT
- ② EXISTING PC CONCRETE SHOULDER
- ③ EXISTING COMBINATION CONCRETE CURB & GUTTER
- ④ EXISTING PC CONCRETE BARRIER WALL, WIDTH VARIES
- ⑤ PROPOSED PAVEMENT GROOVING (SEE GROOVE DETAIL)



I-90 /94 (KENNEDY EXPRESSWAY)  
TYPICAL SECTION

FILE NAME =	USER NAME = pencepl	DESIGNED - PLP	REVISED -	<b>STATE OF ILLINOIS DEPARTMENT OF TRANSPORTATION</b>	<b>EXISTING AND PROPOSED TYPICAL SECTIONS I-90/94 (KENNEDY EXPY)- SO KIMBALL AVENUE TO NO ADDISON STREET</b>	F.A.I. R.T.E. = 94	SECTION = 2017-043I	COUNTY = COOK	TOTAL SHEETS = 16	SHEET NO. = 4		
Default	PLOT SCALE = 100.0000' / in.	CHECKED -	REVISED -			SCALE:	SHEET OF SHEETS	STA. TO STA.	ILLINOIS FED. AID PROJECT			
	PLOT DATE = 12/6/2017	DATE -	REVISED -			CONTRACT NO. 62F70						

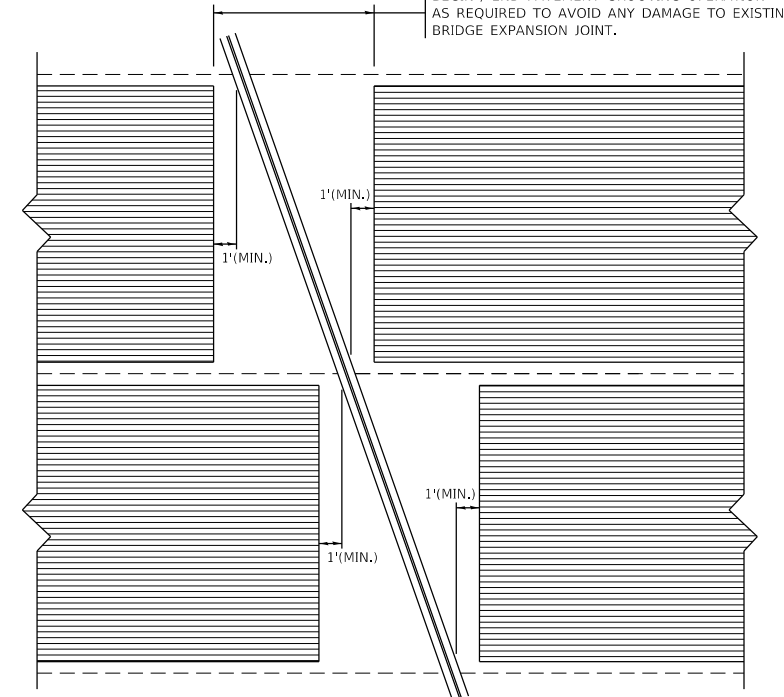


GAP EXISTING BRIDGE EXPANSION JOINTS MINIMUM 1 FOOT EACH SIDE (SEE EXPANSION JOINT GAP DETAIL)

GAP EXISTING LOOP AND LEAD WIRE MINIMUM 1 FOOT EACH SIDE

GAP EXISTING LOOP AND LEAD WIRE MINIMUM 1 FOOT EACH SIDE

BEGIN / END PAVEMENT GROOVING OPERATION AS REQUIRED TO AVOID ANY DAMAGE TO EXISTING BRIDGE EXPANSION JOINT.



EXPANSION JOINT GAP DETAIL

### LEGEND

PROPOSED PAVEMENT GROOVING

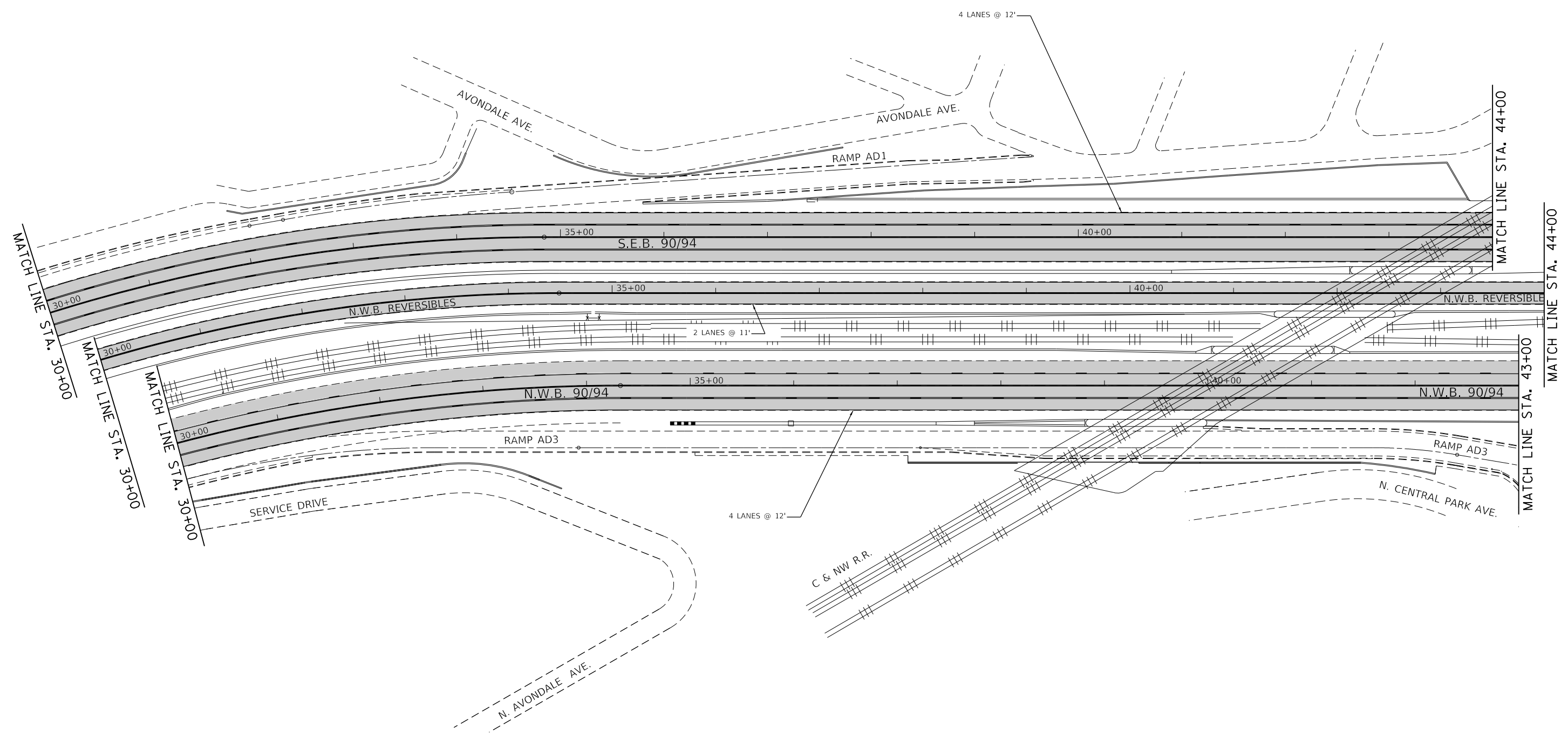
MODEL: Default  
FILE: \\nas01\proj\10238\I-90\CD\Drawings\DOT\Office\Drawings\10238\10238-ehp-plb.dwg

USER NAME = pencepl	DESIGNED - PLP	REVISED -
DRAWN - PLP	REVISED -	
PLOT SCALE = 100.0000' / in.	CHECKED -	REVISED -
PLOT DATE = 12/6/2017	DATE -	REVISED -

**STATE OF ILLINOIS  
DEPARTMENT OF TRANSPORTATION**

ROADWAY PLAN				
I-90/94 (KENNEDY EXPY)- S/O KIMBALL AVENUE TO N/O ADDISON STREET				
SCALE:	SHEET	OF	SHEETS	STA. TO STA.

F.A.I. RTE.	SECTION	COUNTY	TOTAL SHEETS	SHEET NO.
94	2017-043I	COOK	16	5
CONTRACT NO. 62F70				
ILLINOIS FED. AID PROJECT				



### LEGEND

 PROPOSED PAVEMENT GROOVING

MODEL: Default  
 FILE: \\nas01.pva\illinois\B&E\IDNT\EG\Illinois.gov\PI\DOT\Documents\DOT\_Offices\Director\1\Projects\1029\B\CADD\data\Design\102918-shr-pln.dgn

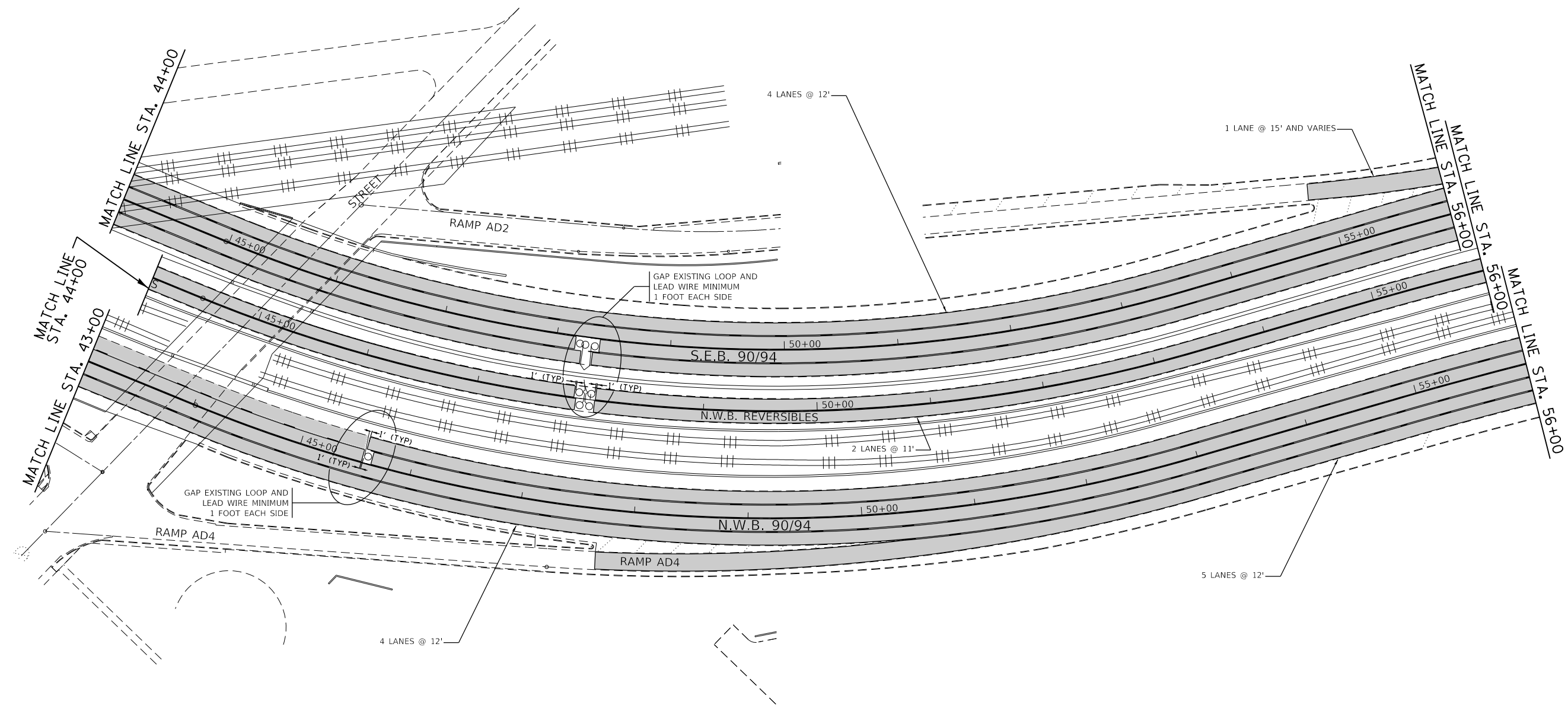
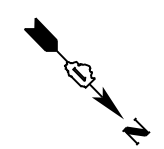
USER NAME = pencepl	DESIGNED - PLP	REVISED -
	DRAWN - PLP	REVISED -
PLOT SCALE = 100,0000' / in.	CHECKED -	REVISED -
PLOT DATE = 12/8/2017	DATE -	REVISED -

**STATE OF ILLINOIS**  
**DEPARTMENT OF TRANSPORTATION**

**ROADWAY PLAN**  
**I-90/94 (KENNEDY EXPY)- S/O KIMBALL AVENUE TO N/O ADDISON STREET**

SCALE:      SHEET      OF      SHEETS      STA.      TO      STA.

F.A.I. RTE.	SECTION	COUNTY	TOTAL SHEETS	SHEET NO.
94	2017-043I	COOK	16	6
CONTRACT NO. 62F70				
ILLINOIS FED. AID PROJECT				



### LEGEND

PROPOSED PAVEMENT GROOVING

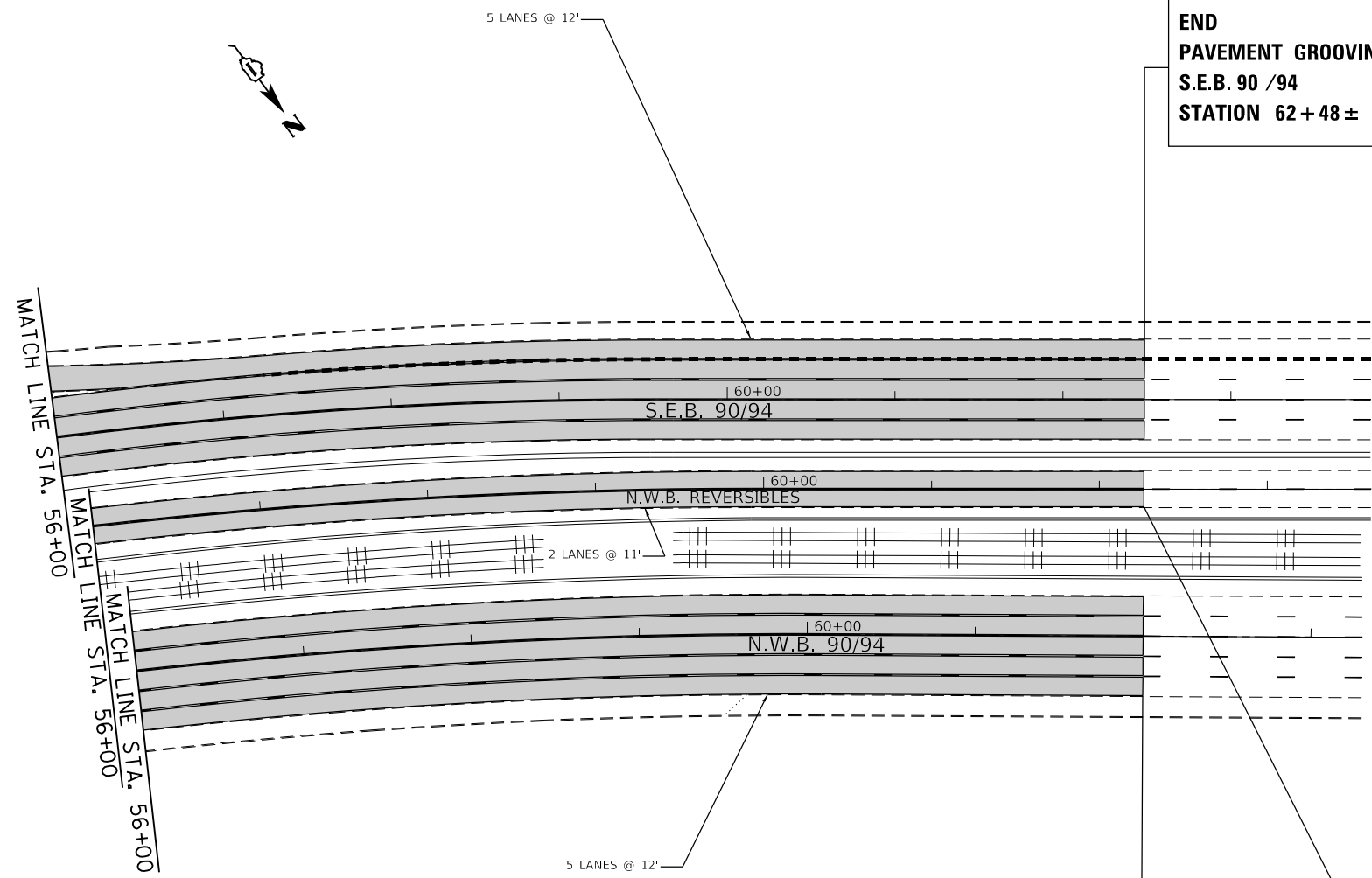
MODEL: Default  
 FILE: \\nas01.psw.us.ibm.com\B&E\ID\NTEC\Illinois\gov\PIW\DOT\Documents\1\DOT\Office\1\Project\1023\B\CADD\Drawings\1023\18-shr-pln.dgn

USER NAME = pencepl	DESIGNED - PLP	REVISED -
DRAWN - PLP	REVISOR -	
PLOT SCALE = 100.0000' / in.	CHECKED -	REVISED -
PLOT DATE = 12/6/2017	DATE -	REVISED -

**STATE OF ILLINOIS**  
**DEPARTMENT OF TRANSPORTATION**

ROADWAY PLAN	
I-90/94 (KENNEDY EXPY)- S/O KIMBALL AVENUE TO N/O ADDISON STREET	
SCALE:	SHEET OF SHEETS STA. TO STA.

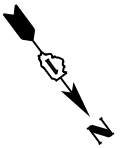
F.A.I. RTE.	SECTION	COUNTY	TOTAL SHEETS	SHEET NO.
94	2017-043I	COOK	16	7
CONTRACT NO. 62F70				
ILLINOIS FED. AID PROJECT				



**END  
PAVEMENT GROOVING  
S.E.B. 90 /94  
STATION 62 + 48 ±**

**END  
PAVEMENT GROOVING  
N.W.B. REVERSIBLES  
STATION 62 + 26 ±**

**END  
PAVEMENT GROOVING  
N.W.B. 90 /94  
STATION 62 + 00**



**LEGEND**

 PROPOSED PAVEMENT GROOVING

MODEL: Default  
FILE: \\nas01.pva\illinois\B&E\BID\NTEC\Illinois.gov\PI\DOT\Documents\DOT\_Offices\Director\_1\Projects\102318\CADD\Drawings\102318-ehp-plan.dgn

USER NAME = pencepl	DESIGNED - PLP	REVISED -
	DRAWN - PLP	REVISED -
PLOT SCALE = 100,0000 ' / in.	CHECKED -	REVISED -
PLOT DATE = 12/6/2017	DATE -	REVISED -

**STATE OF ILLINOIS  
DEPARTMENT OF TRANSPORTATION**

**ROADWAY PLAN  
I-90/94 (KENNEDY EXPY)- S/O KIMBALL AVENUE TO N/O ADDISON STREET**

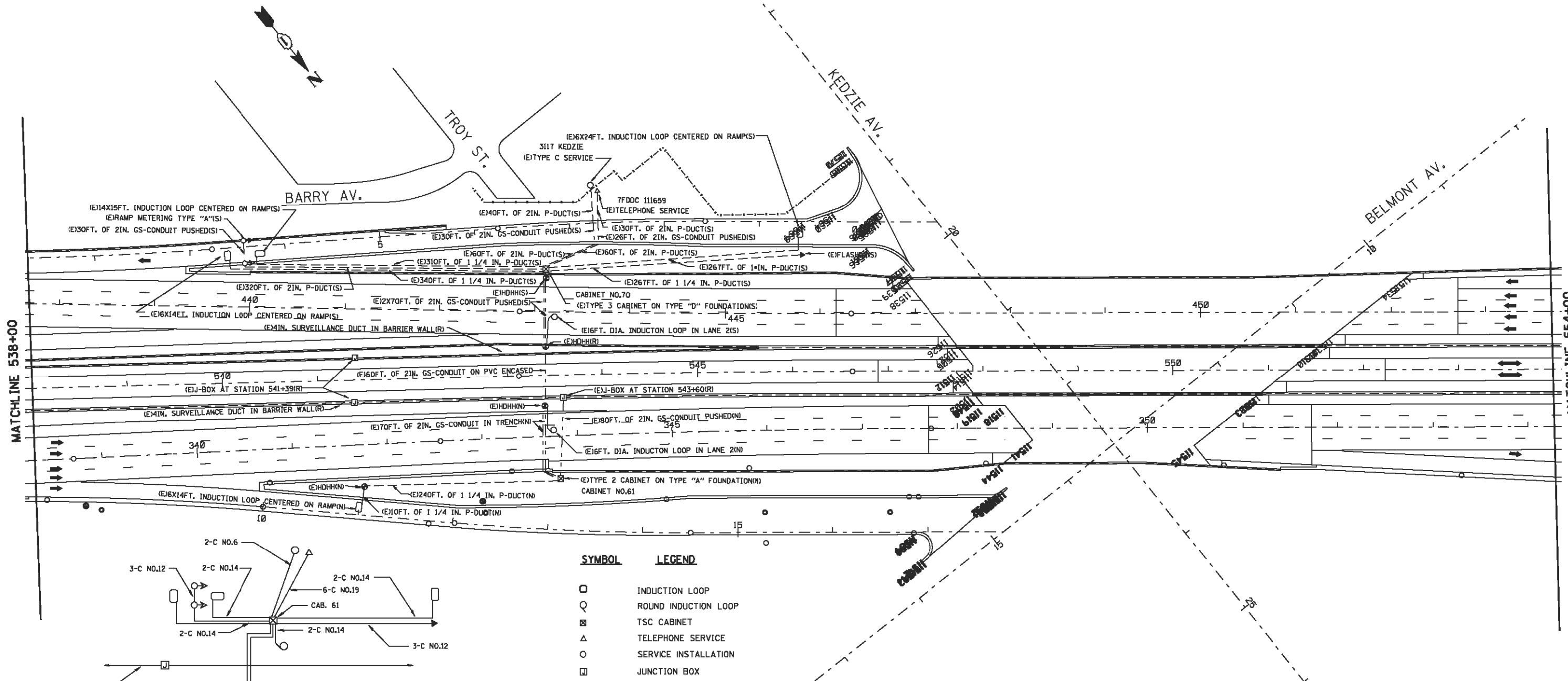
SCALE: SHEET OF SHEETS STA. TO STA.

F.A.I. RTE.	SECTION	COUNTY	TOTAL SHEETS	SHEET NO.
94	2017-043I	COOK	16	8
CONTRACT NO. 62F70				
ILLINOIS FED. AID PROJECT				



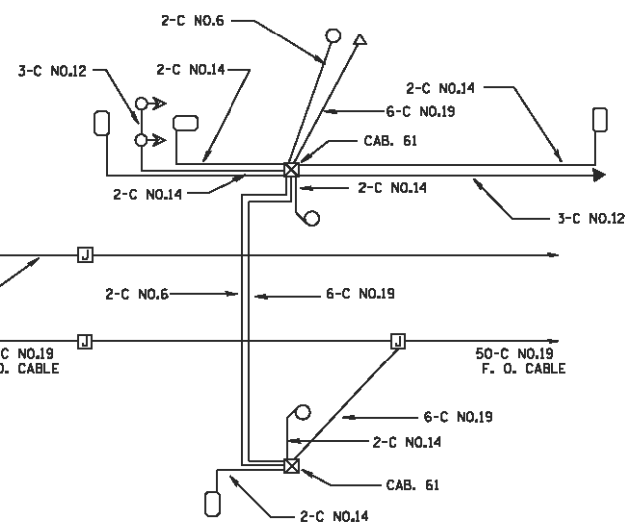
# FOR INFORMATION ONLY

PLAN NO.	SECTION	COUNTY	SHEET NO.
90/34		COOK	
STA. 538+00	TO STA.	554+00	
FILE NO. 90/34	BLANKS	FILE NO. 90/34	



MATCHLINE 538+00

MATCHLINE 554+00



WIRING DIAGRAM

SYMBOL	LEGEND
□	INDUCTION LOOP
○	ROUND INDUCTION LOOP
⊠	TSC CABINET
△	TELEPHONE SERVICE
○	SERVICE INSTALLATION
⊠	JUNCTION BOX
●	HEAVY DUTY HAND HOLE
---	P-DUCT
- - -	GS-CONDUIT
(E)	EXISTING
(P)	PROPOSED
≡	INSTALL
▶	FLASHER
◁▶	RAMP METERING

REVISIONS	
NAME	DATE

ILLINOIS DEPARTMENT OF TRANSPORTATION  
TRAFFIC SYSTEMS CENTER  
**KENNEDY**  
**KEDZIE AVE.**  
**INSTALLATION**

SCALE: VERT. 50:1  
HORIZ. 50:1  
DATE 2-21-91

DRAWN BY G.M.  
CHECKED BY D.S.

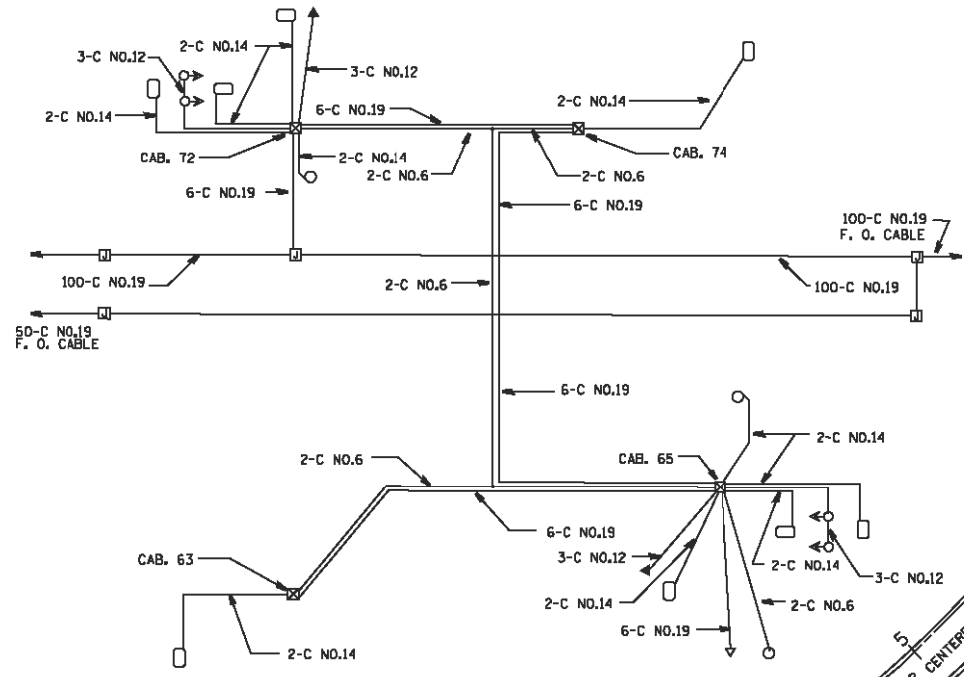
RD=REFEN2.DGN  
RF=NRBPROP.DGN,KED

VI=KED

TRAFFIC SYSTEMS CENTER

# FOR INFORMATION ONLY

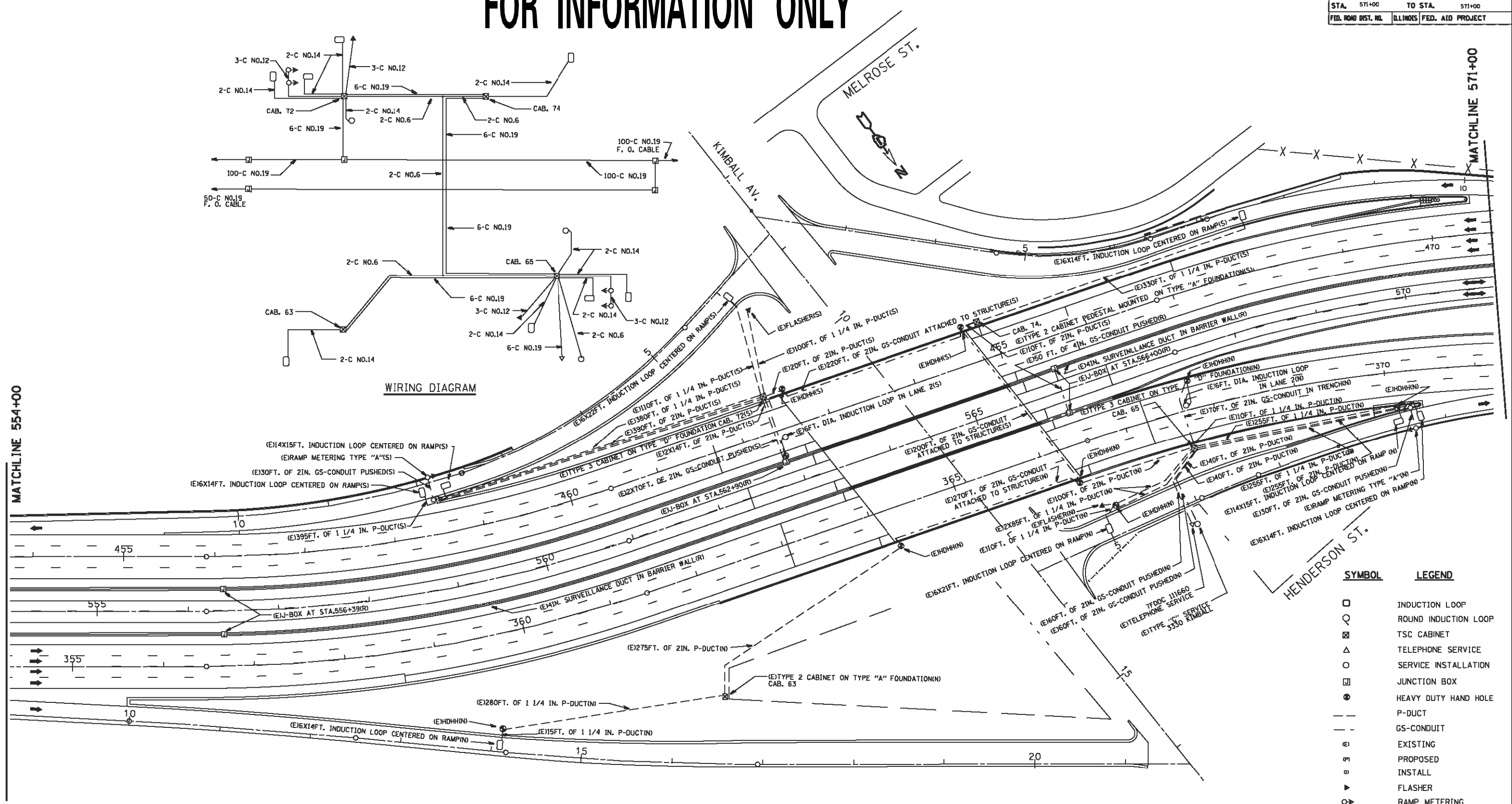
F.A. RTE.	SECTION	COUNTY	TOTAL SHEETS	SHEET NO.
90/94		COOK		
STA. 571+00	TO STA. 571+00			
FED. ROAD DIST. NO.	ILLINOIS FED. AID PROJECT			



WIRING DIAGRAM

MATCHLINE 554+00

MATCHLINE 571+00



SYMBOL	LEGEND
□	INDUCTION LOOP
○	ROUND INDUCTION LOOP
⊠	TSC CABINET
△	TELEPHONE SERVICE
○	SERVICE INSTALLATION
□	JUNCTION BOX
●	HEAVY DUTY HAND HOLE
---	P-DUCT
---	GS-CONDUIT
(E)	EXISTING
(P)	PROPOSED
(I)	INSTALL
▶	FLASHER
◁	RAMP METERING

REVISIONS	
NAME	DATE

ILLINOIS DEPARTMENT OF TRANSPORTATION  
 TRAFFIC SYSTEMS CENTER  
 KENNEDY  
**KIMBALL AVE.  
 INSTALLATION**  
 SCALE: VERT. 50:1  
 HORIZ. 50:1  
 DATE 9-26-90  
 DRAWN BY GM  
 CHECKED BY DS

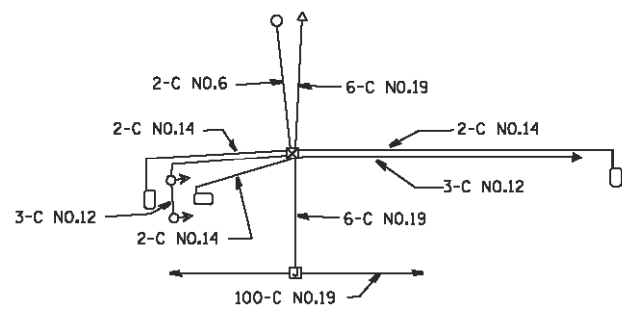
PLT DATE = 3/1/2013  
 PLOT SCALE = 1/8" = 1'-0"  
 PLOT BY = J. J. J. / J. J. J.  
 REVISIONS = 1/1/2013

F.A. RTE.	SECTION	COUNTY	TOTAL SHEETS
90/34		COOK	
STA. 554+00	TO STA. 581+50		
FED. ROAD DIST. NO.	ILLINOIS	FED. AID PROJECT	

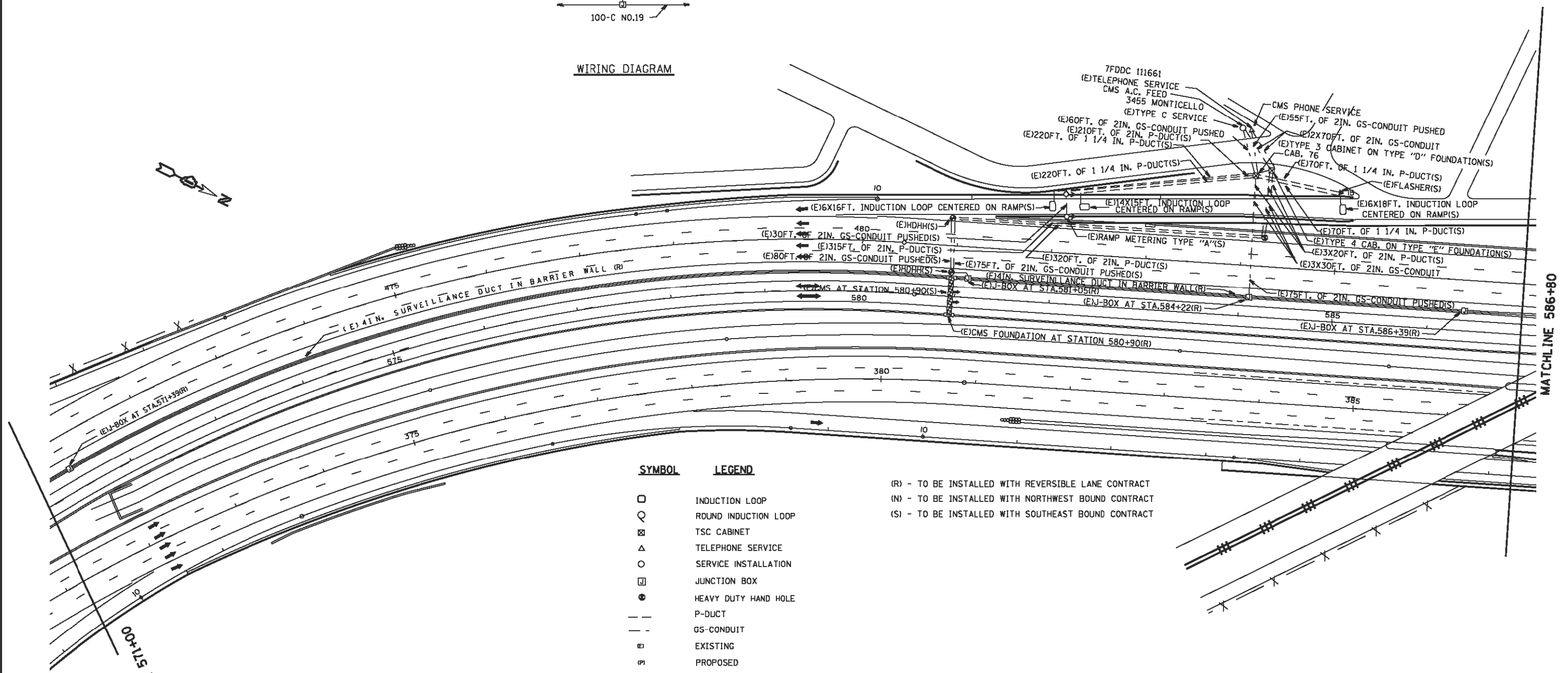
# FOR INFORMATION ONLY

• NOTES:

- 1) GS-CONDUIT PUSHED OR TRENCHED UNDER ROADWAY SHOULD TERMINATE AT A HANDHOLE, OR CABINET FOUNDATION.
- 2) INDUCTION LOOPS SHALL BE SPLICED IN HANHOLES OR LOOP WIRE WILL RUN DIRECTLY TO CABINETS.



WIRING DIAGRAM



SYMBOL	LEGEND
□	INDUCTION LOOP
○	ROUND INDUCTION LOOP
⊠	TSC CABINET
△	TELEPHONE SERVICE
○	SERVICE INSTALLATION
⊠	JUNCTION BOX
●	HEAVY DUTY HAND HOLE
---	P-DUCT
- - -	GS-CONDUIT
(E)	EXISTING
(P)	PROPOSED
(I)	INSTALL
▶	FLASHER
○▶	RAMP METERING
▨	CHANGEABLE MESSAGE SIGN

(R) - TO BE INSTALLED WITH REVERSIBLE LANE CONTRACT  
 (N) - TO BE INSTALLED WITH NORTHWEST BOUND CONTRACT  
 (S) - TO BE INSTALLED WITH SOUTHEAST BOUND CONTRACT

REVISIONS	
NAME	DATE

ILLINOIS DEPARTMENT OF TRANSPORTATION  
 TRAFFIC SYSTEMS CENTER  
 KENNEDY  
 571+00 TO 586+80

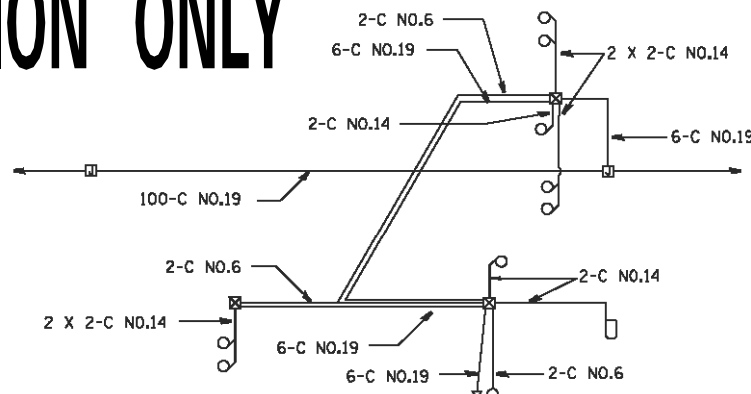
SCALE: VERT. 50:1  
 HORIZ. 50:1  
 DATE 9-26-90

DRAWN BY CM  
 CHECKED BY DS

## TRAFFIC SYSTEMS CENTER

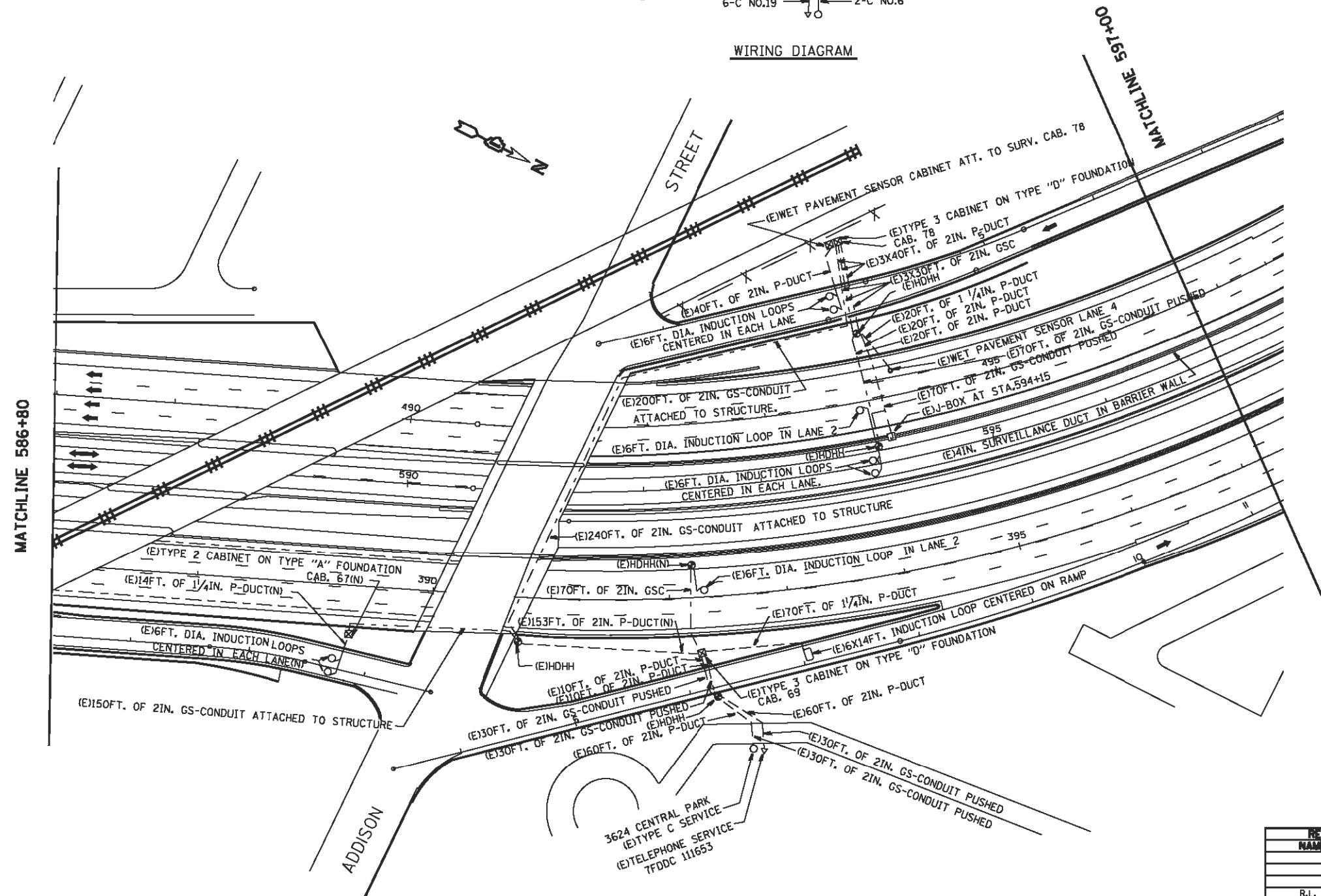
# FOR INFORMATION ONLY

CONTRACT NO.				
F.A. RTE.	SECTION	COUNTY	TOTAL SHEETS	SHEET NO.
90/94		COOK		
STA.	581+50	TO STA.	597+00	
FED. ROAD DIST. NO.	ILLINOIS FED. AID PROJECT			



WIRING DIAGRAM

NOTE:  
1) REUSE EXISTING TYPE "C" SERVICE, AND TELEPHONE SERVICE IF POSSIBLE.



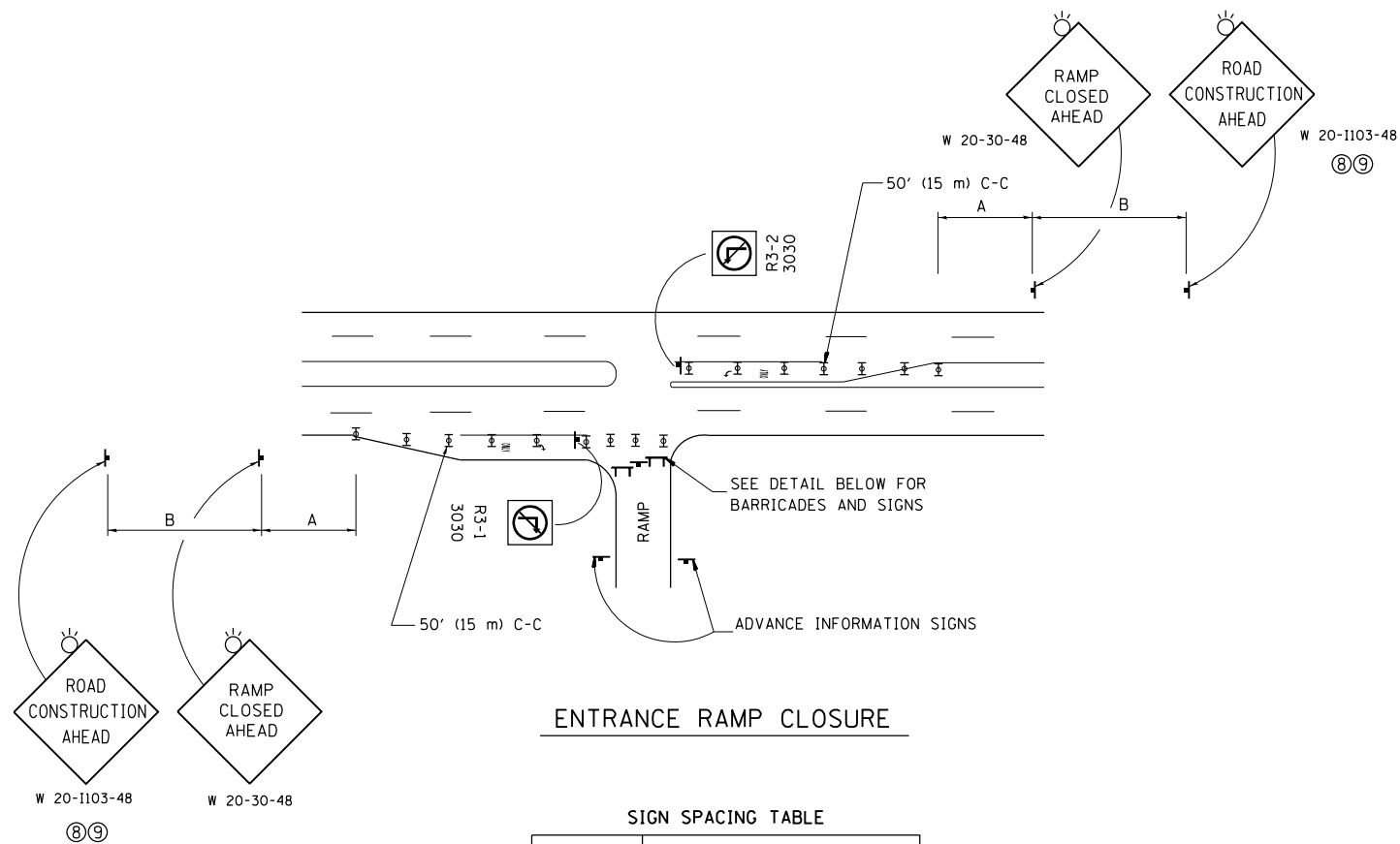
SYMBOL	LEGEND
□	INDUCTION LOOP
○	ROUND INDUCTION LOOP
⊗	TSC CABINET
△	TELEPHONE SERVICE
○	SERVICE INSTALLATION
⊠	JUNCTION BOX
●	HEAVY DUTY HAND HOLE
---	P-DUCT
- - -	GS-CONDUIT
(E)	EXISTING
(P)	PROPOSED
▶	INSTALL
◀	FLASHER
⊙	RAMP METERING

REVISIONS	
NAME	DATE
R.L.	6-28-04

ILLINOIS DEPARTMENT OF TRANSPORTATION  
 TRAFFIC SYSTEMS CENTER  
**KENNEDY**  
**ADDISON ST.**  
**INSTALLATION**  
 SCALE: VERT. 50:1  
 HORIZ. 50:1  
 DATE 9-26-90  
 DRAWN BY GM  
 CHECKED BY DS

PLOT DATE = 3/1/2003  
 FILE NAME = c:\pwworkspace\user\addison\addison\addison.dwg  
 PLOTTER MODEL = HP DesignJet 1200  
 PLOTTER DRIVER = hpdesignjet

## TRAFFIC SYSTEMS CENTER

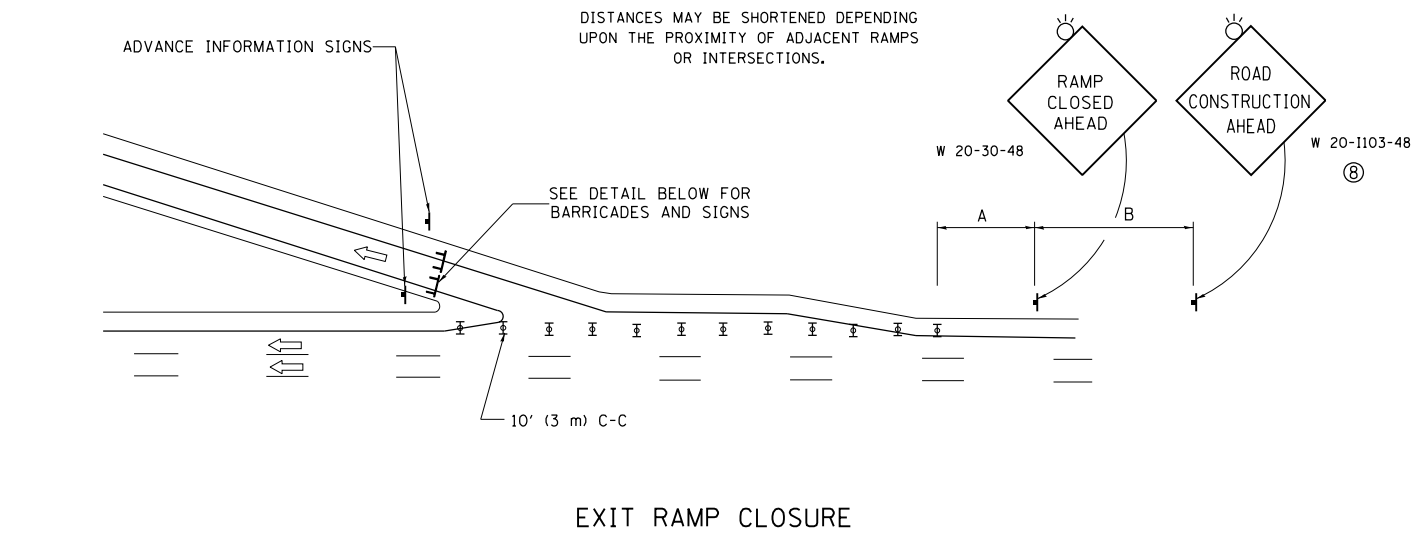


**ENTRANCE RAMP CLOSURE**

**SIGN SPACING TABLE**

FACILITY	DISTANCE BETWEEN SIGNS	
	A	B
EXPRESSWAY >24 HOURS	1000' (300 m)	1500' (450 m)
EXPRESSWAY <24 HOURS	500' (150 m)	500' (150 m)
ARTERIAL 55 MPH	500' (150 m)	500' (150 m)
ARTERIAL 50-45 MPH	350' (100 m)	350' (100 m)
ARTERIAL <45 MPH	200' (60 m)	200' (60 m)

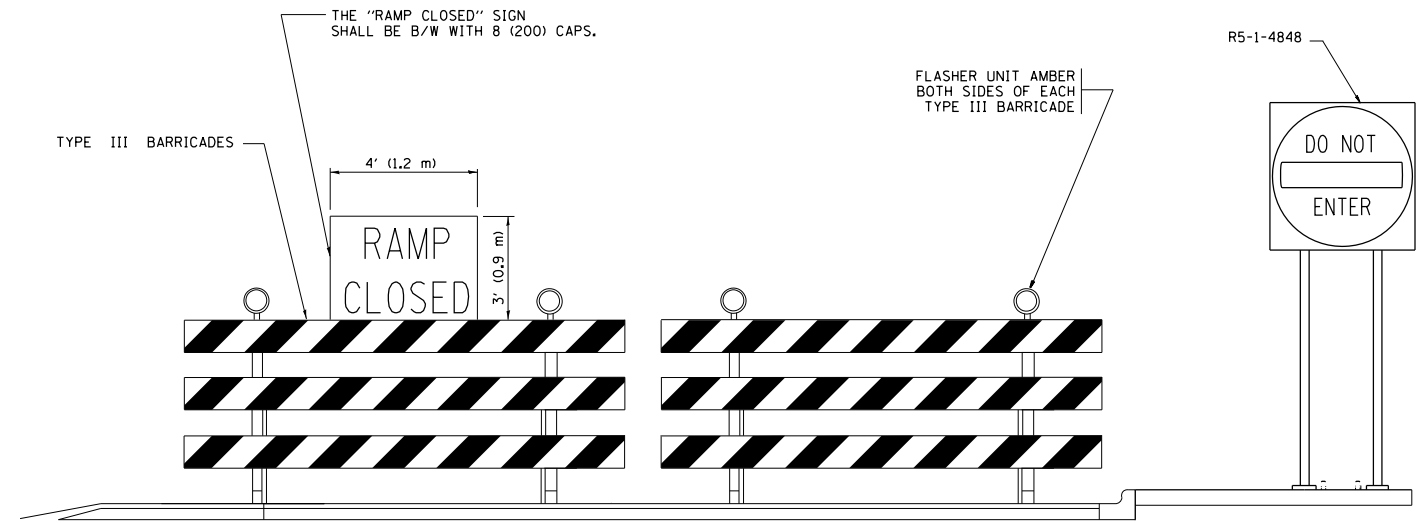
DISTANCES MAY BE SHORTENED DEPENDING UPON THE PROXIMITY OF ADJACENT RAMPS OR INTERSECTIONS.



**EXIT RAMP CLOSURE**

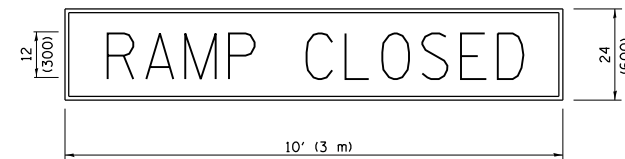
**SYMBOLS**

- ⊥ TYPE II BARRICADE OR DRUM
- ⊓ TYPE III BARRICADE WITH 2 FLASHING LIGHTS



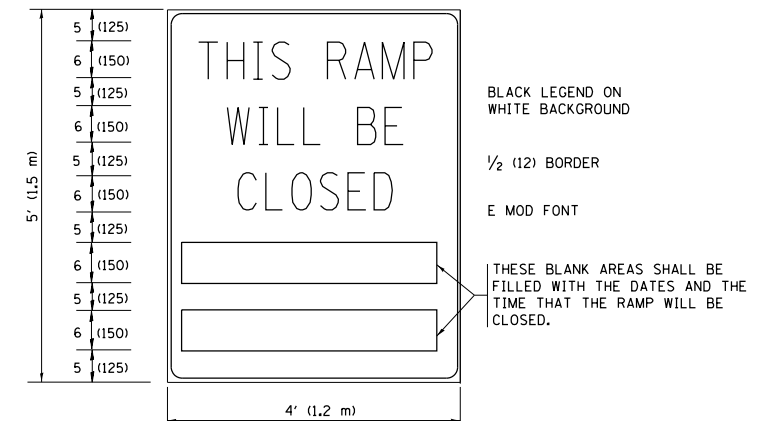
**DETAIL FOR REQUIRED BARRICADES & SIGNS**

**RAMP CLOSURE ADVANCE WARNING SIGN**



BLACK LEGEND ON ORANGE BACKGROUND MOUNTED DIAGONALLY  
E MOD FONT  
1 (25) BORDER  
THESE SIGNS ARE REQUIRED ON ALL THE EXIT GUIDE SIGNS FOR EXIT RAMPS THAT WILL BE CLOSED FOR MORE THAN FOUR (4) CONSECUTIVE DAYS.

**RAMP CLOSURE ADVANCE INFORMATION SIGN**



BLACK LEGEND ON WHITE BACKGROUND  
1/2 (12) BORDER  
E MOD FONT

THESE BLANK AREAS SHALL BE FILLED WITH THE DATES AND THE TIME THAT THE RAMP WILL BE CLOSED.

THESE SIGNS ARE REQUIRED ON BOTH SIDES OF THE RAMP, MINIMUM OF 1 WEEK IN ADVANCE OF THE CLOSURE.

THESE SIGNS SHALL BE FABRICATED AND PAID FOR ACCORDING TO THE TEMPORARY INFORMATION SIGNING SPECIAL PROVISION

**GENERAL NOTES:**

- ① CONES MAY BE SUBSTITUTED FOR DRUMS OR TYPE II BARRICADES DURING DAY OPERATIONS. CONES SHALL BE A MINIMUM OF 28 (700) HIGH.
- ② VERTICAL BARRICADES SHALL NOT BE USED FOR RAMP CLOSURES.
- ③ A FLAGGER SHALL BE POSITIONED AT EACH CLOSED RAMP THAT IS OPEN TO CONSTRUCTION VEHICLES, PRECEDED BY A W20-7 FLAGGER WARNING SIGN.
- ④ ALL ROUTE MARKERS AND TRAILBLAZER ASSEMBLIES WHICH DIRECT MOTORISTS TO A CLOSED ENTRANCE RAMP SHALL BE COVERED WHEN THE RAMP IS CLOSED FOR MORE THAN FOUR (4) DAYS.
- ⑤ THE SIGNING AND BARRICADING WHICH IS REQUIRED BY THIS DETAIL SHALL BE INCLUDED IN THE COST OF TRAFFIC CONTROL AND PROTECTION (EXPRESSWAYS).
- ⑥ AUTHORIZATION FROM THE DISTRICT'S BUREAU OF TRAFFIC IS REQUIRED FOR ALL RAMP CLOSURES.
- ⑦ THE RAMP CLOSURE ADVANCE INFORMATION SIGNS SHALL BE ERECTED IF THE CLOSURE TIME EXCEEDS TWENTY-FOUR (24) HOURS. ADDITIONAL ADVANCE WARNING SIGNS ON EXIT GUIDE SIGNING WILL BE REQUIRED FOR EXIT RAMP CLOSURES THAT EXCEED FOUR (4) DAYS IN LENGTH.
- ⑧ ROAD CONSTRUCTION AHEAD SIGNS MAY BE OMITTED WHEN THIS DETAIL IS USED IN CONJUNCTION WITH OTHER TRAFFIC CONTROL THAT ALREADY INCLUDES A ROAD CONSTRUCTION AHEAD SIGN.
- ⑨ ARTERIAL ROAD CONSTRUCTION AHEAD SIGNS SHALL BE INSTALLED ON THE LEFT SIDE OF TRAFFIC IF THE MEDIAN IS MORE THAN 10 FT WIDE.

ALL DIMENSIONS ARE IN INCHES (MILLIMETERS) UNLESS OTHERWISE SHOWN.

FILE NAME =	USER NAME = pencepl	DESIGNED - D.W.S.	REVISED - S.P.B. 01-07
p:\11084EBID\INTEG\illinois.gov\PI\DOT\Documents\IDOT Offices\District 1\Projects\11084EBID\Design\DistStd.dgn		REVISED - S.P.B. 12-09	
Default	PLOT SCALE = 100.0000' / 1in.	CHECKED -	REVISED - M.D. 06-13
	PLOT DATE = 12/6/2017	DATE - 02-83	REVISED - M.D. 01-18

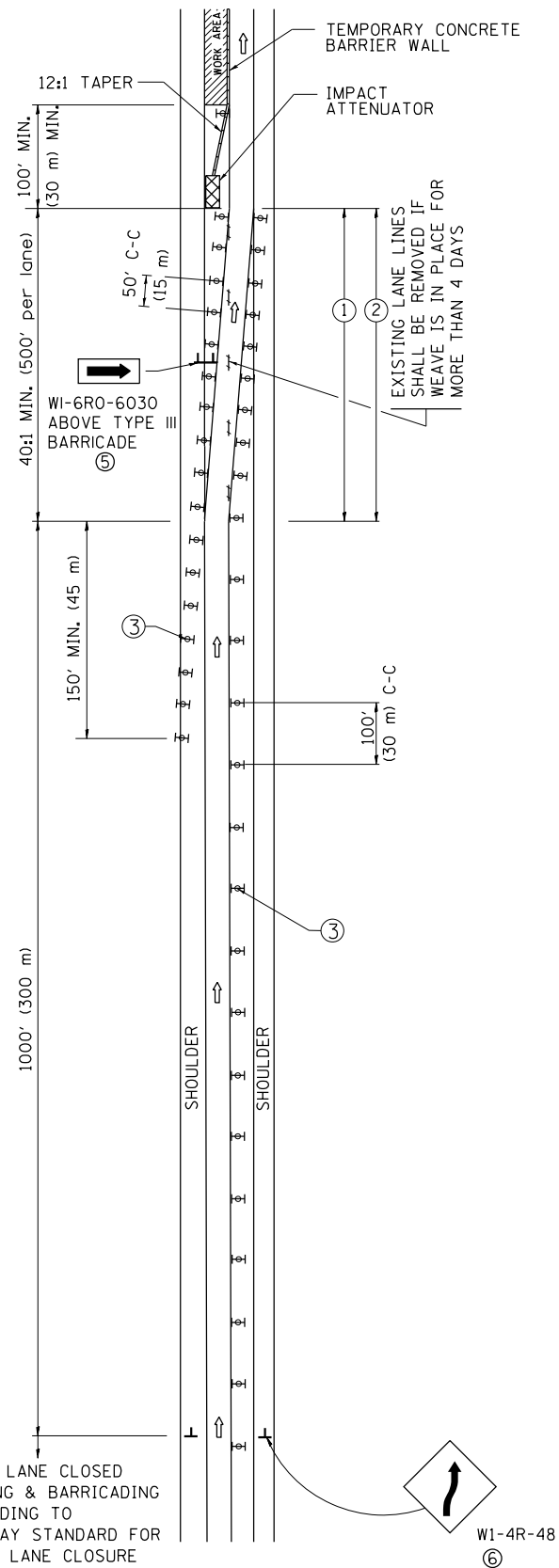
**STATE OF ILLINOIS  
DEPARTMENT OF TRANSPORTATION**

**ENTRANCE AND EXIT RAMP  
CLOSURE DETAILS**

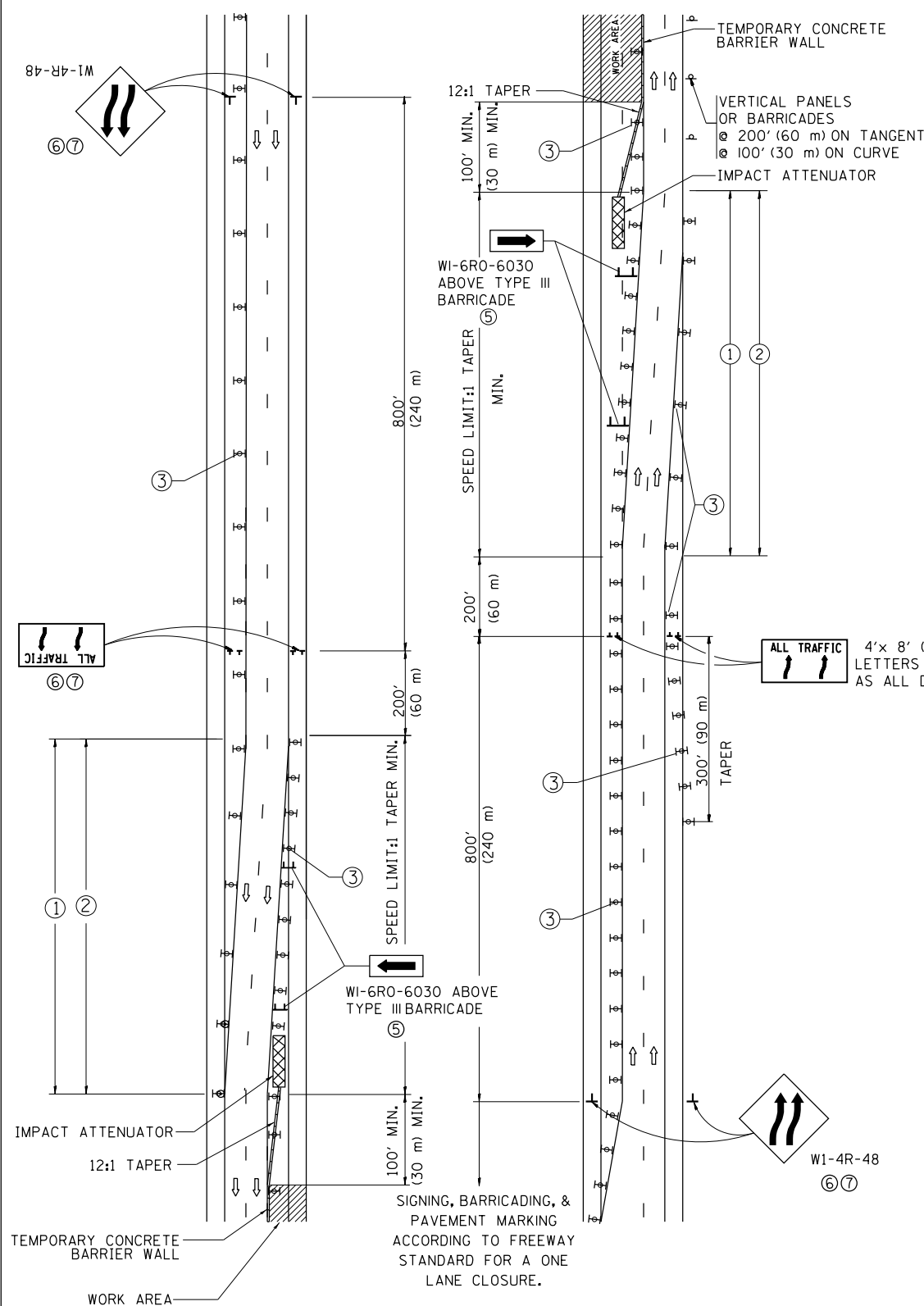
SCALE: NONE SHEET 1 OF 1 SHEETS STA. TO STA.

F.A.I. RTE.	SECTION	COUNTY	TOTAL SHEETS	SHEET NO.
94	2017-043I	COOK	16	13
<b>TC-08</b>		<b>CONTRACT NO. 62F70</b>		
ILLINOIS FED. AID PROJECT				

# SINGLE LANE WEAVE



# MULTI-LANE WEAVE



### GENERAL NOTES

- EXISTING CONFLICTING PAVEMENT MARKING LINES SHALL BE REMOVED. PAVEMENT MARKING REMOVAL SHALL NOT BE REQUIRED FOR SINGLE LANE WEAVES UNDER 4 DAYS IN DURATION.
- CONTINUOUS REFLECTIVE TEMPORARY PAVEMENT MARKING TAPE SHALL BE PLACED THROUGHOUT THE TAPER AND FOR 300' (90 m) ALONG SIDE THE WORK AREA WHERE THE CLOSURE TIME IS GREATER THAN FOURTEEN DAYS. THE LEFT EDGE LINE SHALL BE YELLOW AND THE RIGHT EDGE LINE SHALL BE WHITE. FOR MULTI-LANE WEAVES LANE LINES SHALL BE 5 INCH, 10'-30' (3 m-9 m) SKIP DASH, WHITE.
- PLASTIC DRUMS WITH STEADY BURN LIGHTS AT 50' (15 m) C-C SPACING IN TAPERS AND 100' (30 m) C-C SPACING IN TANGENTS.
- ALL SIGNS SHALL BE POST MOUNTED IF THE CLOSURE TIME EXCEEDS FOUR DAYS.
- TYPE III BARRICADES MAY BE OMITTED FOR SINGLE-LANE WEAVES UNDER 24-HOURS IN DURATION. W1-6 SIGNS WILL STILL BE REQUIRED. IF THE WIDTH OF OFFSET IS LESS THAN 6' THEN THE TYPE III BARRICADE WITH ATTACHED ARROW SIGN PANEL CAN BE ELIMINATED IN THE TAPER AREAS.
- WHEN THE LENGTH OF THE SHIFTED SEGMENT (DISTANCE BETWEEN WEAVE POINTS) IS LESS THAN 1500', DOUBLE REVERSE CURVE SIGNS (W24-1) SHOULD BE USED INSTEAD OF THE REVERSE CURVE (W1-4) SIGNS. ARROWS ON THE 4'X8' "ALL TRAFFIC" SIGNS SHALL BE THE SAME SHAPE.
- THE NUMBER OF ARROWS ON THESE SIGNS SHALL MATCH THE NUMBER OF LANES OPEN TO TRAFFIC.

4'x 8' (1.2 m x 2.4 m); 1 (25) BORDER; 10 (250) CAPITAL LETTERS BACKGROUND SHEETING SHALL BE THE SAME AS ALL DIAMOND SHAPED CONSTRUCTION SIGNS.

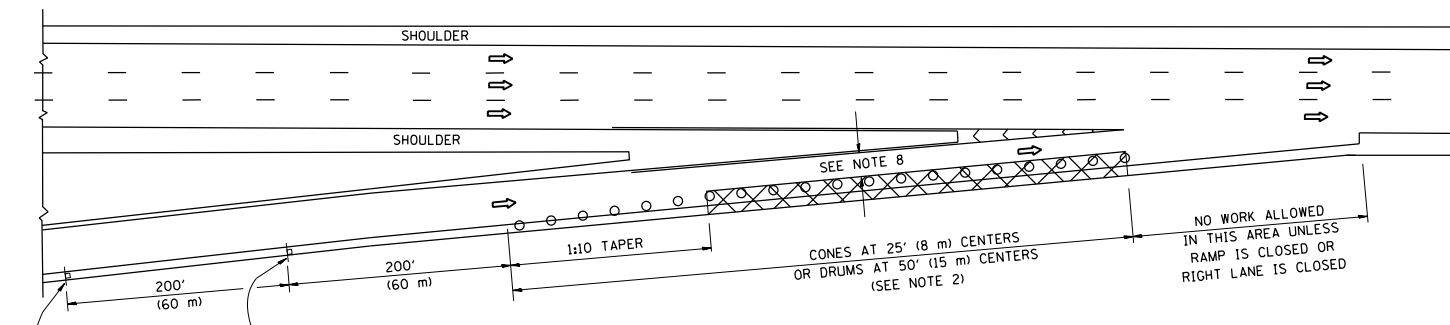
### SYMBOLS

- DIRECTION OF TRAFFIC
- WORK AREA
- SIGN ON PORTABLE OR PERMANENT SUPPORT
- TYPE II BARRICADE OR DRUM WITH MONO-DIRECTIONAL STEADY BURNING LIGHT
- TEMPORARY CONCRETE BARRIER WALL
- IMPACT ATTENUATOR
- W1-4R-48 (6)
- W24-1-48 (7)

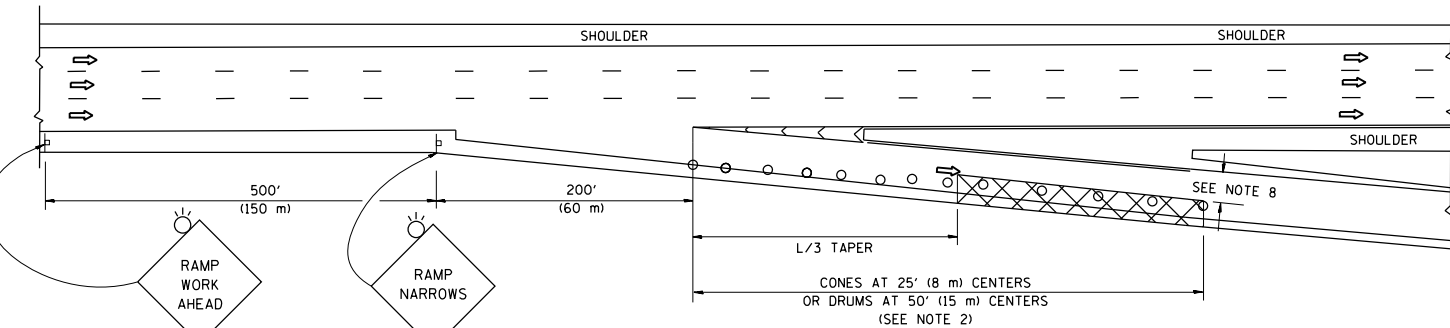
ALL DIMENSIONS ARE IN INCHES (MILLIMETERS) UNLESS OTHERWISE SHOWN

FILE NAME =	USER NAME = pencepl	DESIGNED - DWS	REVISED - JAF 02-06	<b>STATE OF ILLINOIS DEPARTMENT OF TRANSPORTATION</b>	<b>TRAFFIC CONTROL DETAILS FOR FREEWAY SINGLE &amp; MULTI-LANE WEAVE</b>			F.A.I. RTE.	SECTION	COUNTY	TOTAL SHEETS	SHEET NO.
p:\1\084EBIDINTEG.illinois.gov\PIWIDOT\Documents\IDOT Offices\District 1\Projects\DI025\Drawings\Design\DistStd.dgn			REVISED - SPB 01-07					94	2017-043I	COOK	16	14
PLOT SCALE = 100.0000' / 1"	CHECKED -	REVISED - SPB 12-09	REVISED - MD 06-13		<b>TC-09</b>			<b>CONTRACT NO. 62F70</b>				
PLOT DATE = 12/6/2017	DATE - 02-87				SCALE: NONE	SHEET NO. 1 OF 1 SHEETS	STA.	TO STA.	FED. ROAD DIST. NO. 1 ILLINOIS FED. AID PROJECT			

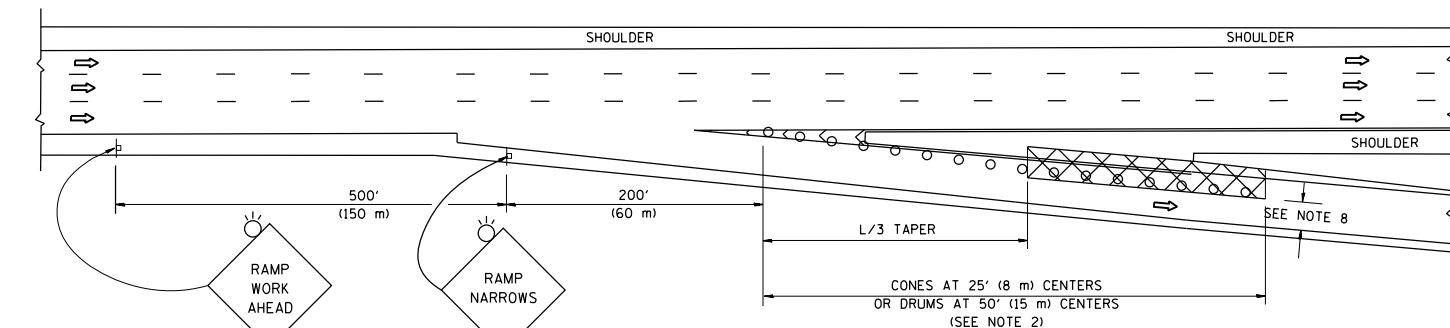
PARTIAL RAMP CLOSURE DETAILS



TYPICAL ENTRANCE RAMP



TYPICAL EXIT RAMP



TYPICAL EXIT RAMP

SYMBOLS

- ACTIVE WORK AREA
- SIGN ON PORTABLE OR PERMANENT SUPPORT
- FLAGGER WITH CONTROL SIGN
- TYPE II BARRICADE OR DRUM
- CONE, DRUM OR BARRICADE
- IMPACT ATTENUATOR OF TYPE AND TEST LEVEL SPECIFIED

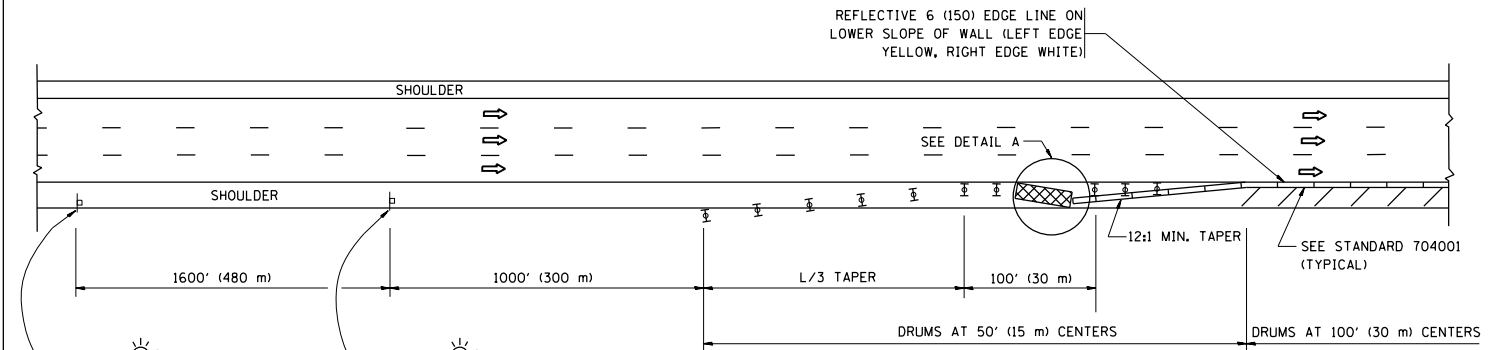
GENERAL NOTES

1. THE "L" DISTANCE EQUALS:  

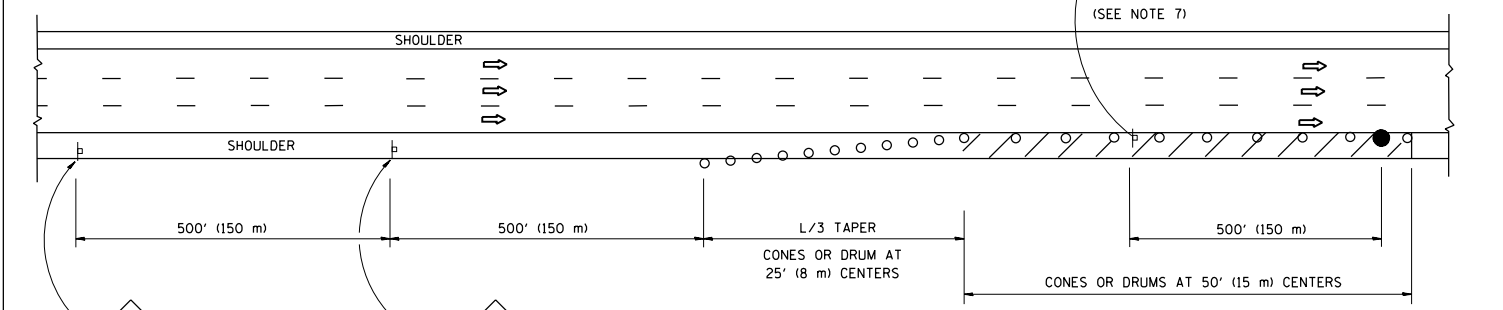
SPEED LIMIT	FORMULAS
45 mph (80 km/h)	METRIC ENGLISH
OR GREATER:	$L=0.65(W)(S)$ $L=(W)(S)$

W = WIDTH OF OFFSET IN FEET (METERS)  
 S = NORMAL POSTED SPEED MPH (KM/H)
2. TYPE II BARRICADES OR DRUMS ARE REQUIRED FOR ALL NIGHTTIME CLOSURES. TYPE II BARRICADES OR DRUMS WITH MONODIRECTIONAL STEADY BURN LIGHTS ARE REQUIRED FOR DELINEATING OBSTACLES, EXCAVATIONS, OR HAZARDS EXCEEDING 100 FT (30m) IN LENGTH AT NIGHT.
3. ALL SIGNS SHALL BE POST MOUNTED IF THE CLOSURE TIME EXCEEDS FOUR DAYS.
4. FLASHING LIGHTS SHALL BE USED DURING THE HOURS OF DARKNESS AND SHALL BE INSTALLED ABOVE THE FIRST TWO SETS OF SIGNS.
5. THE IMPACT ATTENUATOR, TEMPORARY IS NOT REQUIRED WHEN THE TEMPORARY CONCRETE BARRIER WALL IS PROTECTED BY OR IS TIED INTO THE EXISTING GUARDRAIL. IF OFFSET IS LESS THAN 5 FEET USE NARROW USE TYPE DEVICE TO MEET NCHRP350/MASH.
6. AUTHORIZATION FROM THE DISTRICT'S BUREAU OF TRAFFIC IS REQUIRED FOR ALL FREEWAY CLOSURES.
7. THE FLAGGER AND FLAGGER SIGN ARE REQUIRED AT THE ABOVE WORK SITES WHEN:
  - a. FOUR OR MORE WORK VEHICLES ENTER THE TRAFFIC LANES IN A ONE HOUR PERIOD.
  - b. THE WORK ACTIVITY REQUIRES FREQUENT ENCROACHMENT INTO THE LANE OPEN TO TRAFFIC.
 THE FLAGGER SHALL BE STATIONED APPROXIMATELY 100' (30 m) TO 200' (60 m) IN ADVANCE OF THE WORKERS.
8. 12' MIN. WIDTH TANGENT SECTION  
 16' MIN. WIDTH CURVE SECTION.

SHOULDER CLOSURE DETAILS

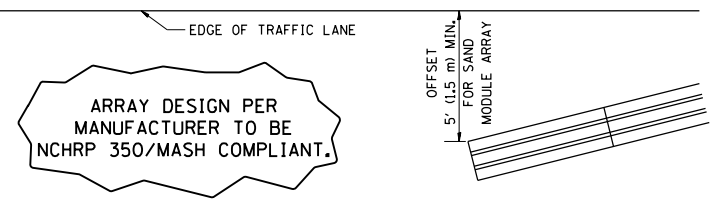


PERMANENT SHOULDER CLOSURE



DAYTIME SHOULDER CLOSURE

THIS DETAIL IS USED WHERE:  
 1. VEHICLES, EQUIPMENT, WORKERS OR THEIR ACTIVITIES ENCROACH IN AN AREA CLOSER THAN 15' (4.5 m) TO THE EDGE OF PAVEMENT FOR A PERIOD IN EXCESS OF 15 MINUTES.



DETAIL "A"  
 IMPACT ATTENUATOR, TEMPORARY  
 (SEE NOTE 5)

ALL DIMENSIONS ARE IN INCHES (MILLIMETERS) UNLESS OTHERWISE SHOWN.

FILE NAME =	USER NAME = pencepl	DESIGNED -	REVISED - S.P.B. 01-07
p:\11084EBIDINTEG\illinois.gov\PI\DOT\Documents\DOT Offices\District 1\Projects\11023\Drawings\Design\DWG\Std.dgn		DRAWN -	REVISED - S.P.B. 12-09
Default	PLOT SCALE = 100.0000' / 1in.	CHECKED -	REVISED - M.D. 06-13
	PLOT DATE = 12/6/2017	DATE - 11-96	REVISED - M.D. 01-18

STATE OF ILLINOIS  
 DEPARTMENT OF TRANSPORTATION

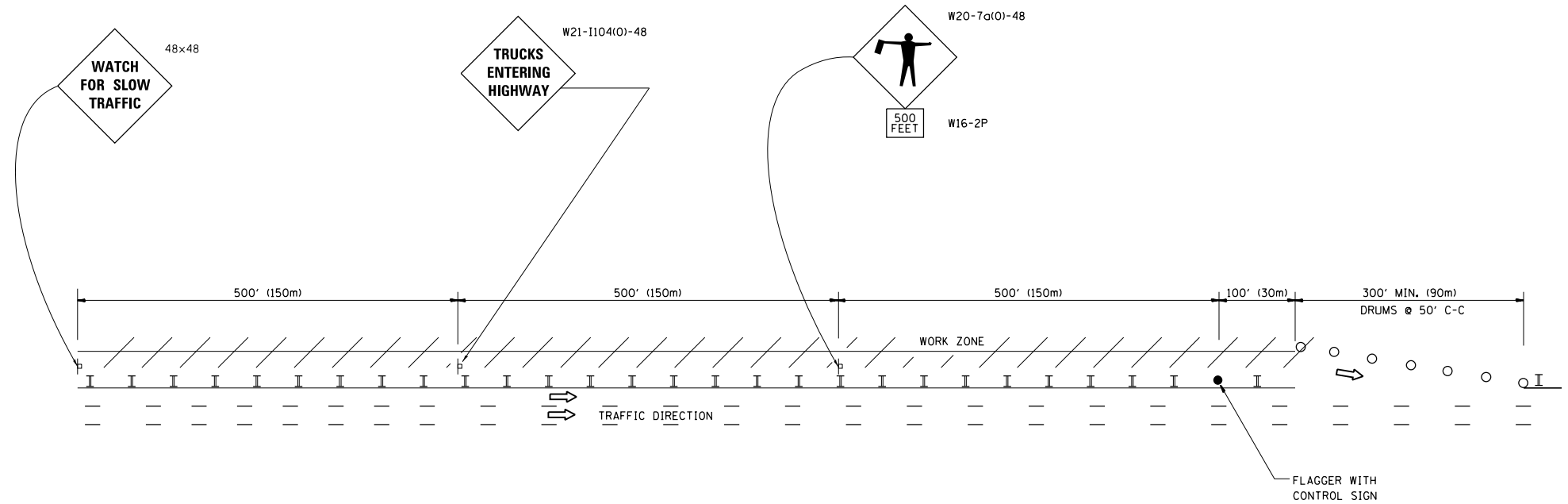
TRAFFIC CONTROL DETAILS FOR FREEWAY  
 SHOULDER CLOSURES AND PARTIAL RAMP CLOSURES

SCALE: NONE SHEET 1 OF 1 SHEETS STA. TO STA.

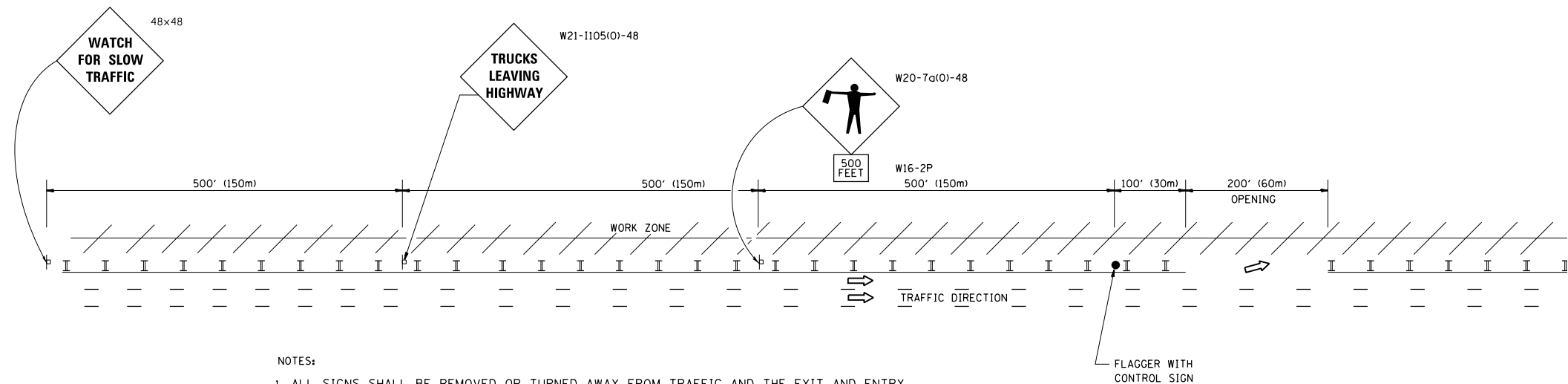
F.A.I. RTE.	SECTION	COUNTY	TOTAL SHEETS	SHEET NO.
94	2017-043I	COOK	16	15
TC-17		CONTRACT NO. 62F70		
ILLINOIS FED. AID PROJECT				

## SIGNING FOR FLAGGING OPERATIONS AT WORK ZONE OPENINGS

### WORK ZONE EXIT OPENING



### WORK ZONE ENTRY OPENING



**NOTES:**

1. ALL SIGNS SHALL BE REMOVED OR TURNED AWAY FROM TRAFFIC AND THE EXIT AND ENTRY OPENINGS SHALL BE CLOSED WHEN THE FLAGGING OPERATION CEASES. NON OPERATING EQUIPMENT SHALL COMPLY WITH ARTICLE 701.11
2. WORK ZONE OPENINGS SHALL BE A MINIMUM OF ONE HALF MILE APART AND A MINIMUM OF ONE QUARTER MILE FROM ALL ENTRANCE AND EXIT RAMPS.
3. EXITING THE WORK ZONE AT ANY PLACE OTHER THAN AT A WORK ZONE EXIT OPENING WILL BE PROHIBITED.
4. ALL VEHICLES SHALL ENTER THE WORK ZONE AT ENTRY OPENINGS, USING THEIR TURN SIGNALS TO WARN MOTORISTS
5. FLAGGERS SHALL NOT STOP TRAFFIC OR DIRECT TRAFFIC INTO AN ADJACENT LANE.

ALL DIMENSIONS ARE IN INCHES (MILLIMETERS)  
UNLESS OTHERWISE SHOWN

FILE NAME =	USER NAME = pencepl	DESIGNED -	REVISED - J.A.F. 02-06	<b>STATE OF ILLINOIS DEPARTMENT OF TRANSPORTATION</b>	<b>FREEWAY/EXPRESSWAY SIGNING FOR FLAGGING OPERATIONS AT WORK ZONE OPENINGS ON FREEWAYS/EXPRESSWAYS</b>	F.A.I. -	SECTION	COUNTY	TOTAL SHEETS	SHEET NO.
pw:\IL\084EBIDINTEG.illinois.gov\PIDOT\Documents\IDOT Offices\District 1\Projects\DI023\Drawings\Design\DistStd.dgn		REVISED -	REVISED - S.P.B. 01-07			94	2017-043I	COOK	16	16
PLOT SCALE = 100.0000' / in.	CHECKED -	REVISED -	REVISED - S.P.B. 12-09			<b>TC-18</b>		<b>CONTRACT NO. 62F70</b>		
PLOT DATE = 12/6/2017	DATE -	REVISED -	REVISED - M.D. 06-13			SCALE: NONE		SHEET NO. 1 OF 1 SHEETS		STA. TO STA.
						FED. ROAD DIST. NO. 1 ILLINOIS FED. AID PROJECT				