



Illinois Department of Transportation

Office of Intermodal Project Implementation / Division of Aeronautics
1 Langhorne Bond Drive / Springfield, Illinois 62707-8415

April 23, 2018

SUBJECT: Abraham Lincoln Capital Airport
Springfield, Illinois
Sangamon County
Illinois Project Number: SPI-4635
SBG Project Number:
Contract No. CA020
Item No. 4A, April 27, 2018 Letting
Addendum A

NOTICE TO PROSPECTIVE BIDDERS

Attached is an addendum to the plans and proposal. This addendum involves revised and/or added material.

Reason for Addendum:

Addition of Power Duct Bank and Handholes to the electrical plans.

To All Plan Holders:

The following revisions are included in Addendum A:

Plan Changes

1. Plan Sheet 2
Added ITEM AR110504 4-WAY CONCRETE ENCASED DUCT LF
Deleted ITEM AR801601-REMOVE EXISTING LUMINAIRE, SALVAGE-EA
Revised quantities for ITEMS AR801667, AR910201, AR910915, AR910975, AR950110
2. Plan Sheet 50-Modified note references as shown in clouded revisions.
3. Plan Sheet 51-Revised data inside table.
4. Plan Sheets 52-Revised notes in legend and callouts on plan sheet as shown in clouded revisions.
5. Plan Sheet 53-Revised the legend to match sheet 52, and revised note 2.
6. Plan Sheet 54-Modified sign 11, and added signs 5a, 23 and 37. Split signs in to Categories A and B for clarification, and added notes.
7. Plan Sheet 55-Added ITEM AR1105044 and quantity, and deleted ITEM AR801601 and quantity to and from the Bill of Materials. Revised quantity for ITEM AR801653-HANDHOLE, HEAVY DUTY.
8. Plan Sheet 56-Show fourth luminaire to remain and deleted key note 1.
9. Plan Sheet 57-Show fourth luminaire to remain and deleted key note 1. Revised all other key note numbers and revised corresponding callouts on the plan sheet.
10. Plan Sheet 59-Added proposed power duct bank plan, handholes and notes.
Show fourth luminaire to remain and deleted key note 1. Revised all other key note numbers and revised corresponding callouts on the plan sheet.
11. Plan Sheet 60-Added proposed power duct bank plan, handholes and notes.
Show fourth luminaire to remain and deleted key note 1. Revised all other key note numbers and revised corresponding callouts on the plan sheet.
12. Plan Sheet 61- Revised all other key note numbers and revised corresponding callouts on the plan sheet.
13. Plan Sheet 62-Added power duct bank to Detail 5.

14. Plan Sheet 63-Added note at bottom of sheet. Modified Detail 4 to show 2x2 power duct bank.

Special Provisions Changes

1. ITEM AR110504 4-WAY CONCRETE ENCASED DUCT – PER LINEAL FOOT added to ITEM 110-BASIS OF PAYMENT under DIVISION VI (Page No. 15)
2. ITEM AR801661-REMOVE EXISTING LUMINAIRE, SALVAGE-PER EACH deleted from ITEM 106-BASIS OF PAYMENT under DIVISION VI (Page No. 15)
3. ITEM 910-ROADWAY & PARKING LOT SIGNING, AND LIGHTING DUCT. Added sign specifications for clarification. (Page No.'s 36-38)

Prime contractors must utilize the enclosed material when preparing their bid and must include any Schedule of Prices changes in their bidding proposal.

Bidders using computer-generated bids are cautioned to reflect any and all Schedule of Prices changes, if involved, into their computer programs.

Questions on this addendum may be directed to Jeffrey S. Antonacci, P.E. of Knight E/A, Inc. at (217) 615-4215.

SUMMARY OF QUANTITIES BASE BID: ROADS AND PARKING LOT

SP	ITEM NO.	ITEM DESCRIPTION	UNITS	QUANTITY
	AR106401	LIGHT POLE	EACH	19.0
	AR106900	REMOVE LIGHT POLE	EACH	19.0
	AR106905	REMOVE LIGHT POLE & FIXTURE	EACH	10.0
	AR108082	1/C #2 XLP-USE	LF	60.0
	AR108086	1/C #6 XLP-USE	LF	10,400.0
	AR110200	1-1/4" PVC DUCT, DIRECT BURY	LF	535.0
	AR110201	1" PVC DUCT, DIRECT BURY	LF	1,950.0
	AR110504	4-WAY CONCRETE ENCASED DUCT	LF	865.0
	AR110506	6-WAY CONCRETE ENCASED DUCT	LF	935.0
	AR150510	ENGINEER'S FIELD OFFICE	LS	1.0
	AR150520	MOBILIZATION	LS	1.0
	AR150530	TRAFFIC MAINTENANCE	LS	1.0
	AR151420	CLEARING TREES 0-2.5' BUTT. DIA.	EACH	8.0
	AR151429	STUMP REMOVAL 0.0-2.5' FT. DIA.	EACH	8.0
	AR151451	CLEARING AND GRUBBING 0"-6"	ACRE	2.4
	AR152410	UNCLASSIFIED EXCAVATION	CY	4,364.0
	AR156510	SILT FENCE	LF	807.0
	AR156520	INLET PROTECTION	EACH	17.0
	AR209604	CRUSHED AGG. BASE COURSE-4"	SY	916.0
	AR209608	CRUSHED AGG. BASE COURSE-8"	SY	7,298.0
	AR209612	CRUSHED AGG. BASE COURSE-12"	SY	1,287.0
	AR401613	BIT. SURF. CSE.-METHOD I, SUPERPAVE	TON	1,924.0
	AR401650	BITUMINOUS PAVEMENT MILLING	SY	15,131.0
	AR401655	BUTT JOINT CONSTRUCTION	SY	50.0
	AR401900	REMOVE BITUMINOUS PAVEMENT	SY	3,507.0
	AR403613	BIT. BASE CSE.-METHOD I, SUPERPAVE	TON	2,529.0
	AR403621	BIT. BASE CSE., LEVELING SUPERPAVE	TON	163.0
	AR501604	4" PCC SIDEWALK	SF	2,923.0
	AR501690	PCC SIDEWALK REMOVAL	SF	1,152.0
	AR501900	REMOVE PCC PAVEMENT	SY	236.0
	AR602510	BITUMINOUS PRIME COAT	GAL	1,751.0
	AR603510	BITUMINOUS TACK COAT	GAL	2,044.0
	AR620510	PAVEMENT MARKING	SF	4,962.0
	AR620535	PAVEMENT MARKING - THERMOPLASTIC	SF	1,914.0
	AR701312	12" RCP, CLASS II	LF	198.0
	AR701315	15" RCP, CLASS II	LF	27.0
	AR701318	18" RCP, CLASS II	LF	226.0

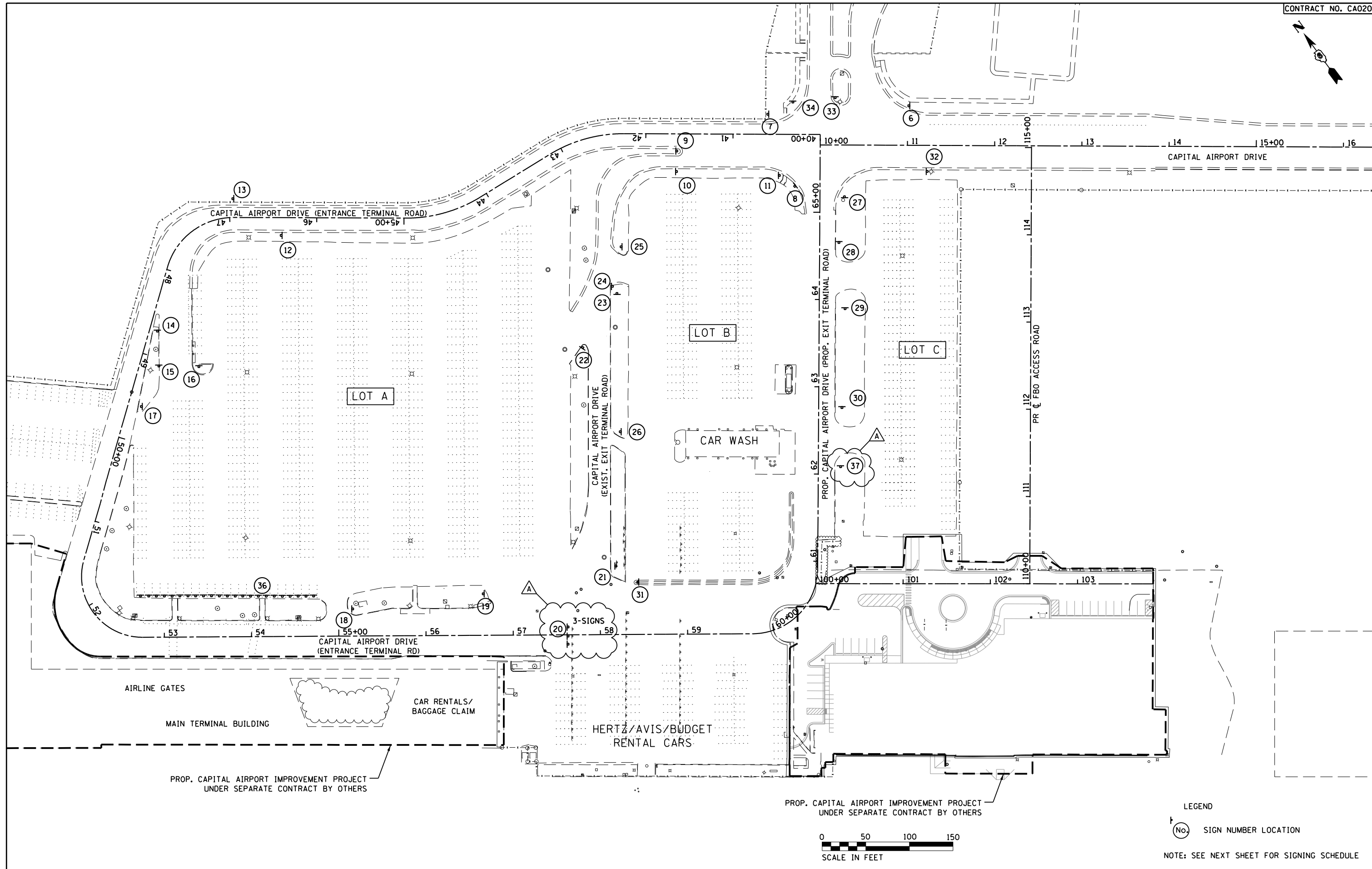
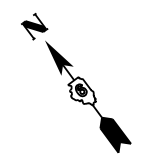
SP	ITEM NO.	ITEM DESCRIPTION	UNITS	QUANTITY
	AR701900	REMOVE PIPE	LF	25.0
	AR751411	INLET-TYPE A	EACH	5.0
	AR751416	TYPE 1 INLET	EACH	1.0
	AR751540	MANHOLE 4'	EACH	4.0
	AR751900	REMOVE INLET	EACH	1.0
	AR751927	REPLACE FRAME & GRATE	EACH	6.0
	AR751940	ADJUST INLET	EACH	4.0
	AR751943	ADJUST MANHOLE	EACH	2.0
	AR754212	CONCRETE CURB TYPE B	LF	730.0
	AR754410	COMB CONCRETE CURB & GUTTER	LF	4,985.0
	AR754900	REMOVE CONCRETE CURB	LF	2,542.0
	AR754904	REMOVE COMB CURB & GUTTER	LF	1,285.0
	AR801650	CONCRETE PAVERS	SF	2,463.0
	AR801651	BENCH	EACH	4.0
	AR801652	FLAG POLE	EACH	3.0
	AR801653	HANDHOLE, HEAVY DUTY	EACH	7.0
	AR801654	REFURBISH LIGHT POLE	EACH	19.0
	AR801655	LIGHT POLE FOUNDATION	EACH	14.0
	AR801656	LIGHT POLE FOUNDATION (TYPE F7A)	EACH	6.0
	AR801657	LIGHTING CONTROLLER FOUNDATION	EACH	1.0
	AR801658	REMOVE CONCRETE FOUNDATION	EACH	5.0
	AR801659	RELOCATE EXISTING LIGHT POLE	EACH	4.0
	AR801660	REMOVE & REINSTALL SECURITY EQUIP.	EACH	2.0
	AR801662	PARKING LED LUM, TY V DISTRIBUTION	EACH	8.0
	AR801663	PARKING LED LUM, TY II DISTRIBUTION	EACH	13.0
	AR801664	RDWY LIGHT POLE	EACH	16.0
	AR801665	LUMINAIRE BRACKET	EACH	21.0
	AR801666	RELOCATE LIGHTING CONTROLLER	EACH	1.0
	AR801667	RELOCATE LED LUMINAIRE	EACH	86.0
	AR801668	RDWY LIGHT POLE, W/2 ARMS & LUMINAIR	EACH	1.0
	AR801669	DETECTABLE WARNING SURFACE	SQ YD	40.0
	AR801670	PEDESTRIAN CROSSWALK TABLE	SY	485.0
	AR801671	PCC MEDIAN SURFACE 4"	SF	11,431.0
	AR910201	SIGN PANEL	SF	893.0
	AR901510	SEEDING	ACRE	0.8
	AR908512	MULCHING-METHOD 2	ACRE	0.8
	AR910110	RDWY LIGHT POLE W/FIXTURE	EACH	9.0

SP	ITEM NO.	ITEM DESCRIPTION	UNITS	QUANTITY
	AR910230	HANDICAP SIGN	EACH	6.0
	AR910240	SIGN SUPPORT	EACH	28.0
	AR910250	TELESCOPING SIGN SUPPORT	EACH	99.0
	AR910915	REMOVE ROADWAY SIGN	EACH	60.0
	AR910975	RELOCATE ROADWAY SIGN	EACH	1.0
	AR950110	ROADWAY SIGN, STOP	EACH	9.0

A PAY ITEM AR801661 REMOVE EXISTING LUMINAIRE, SALVAGE REMOVED

ADDITIVE ALTERNATE NO. 1: LLCC PARKING LOT

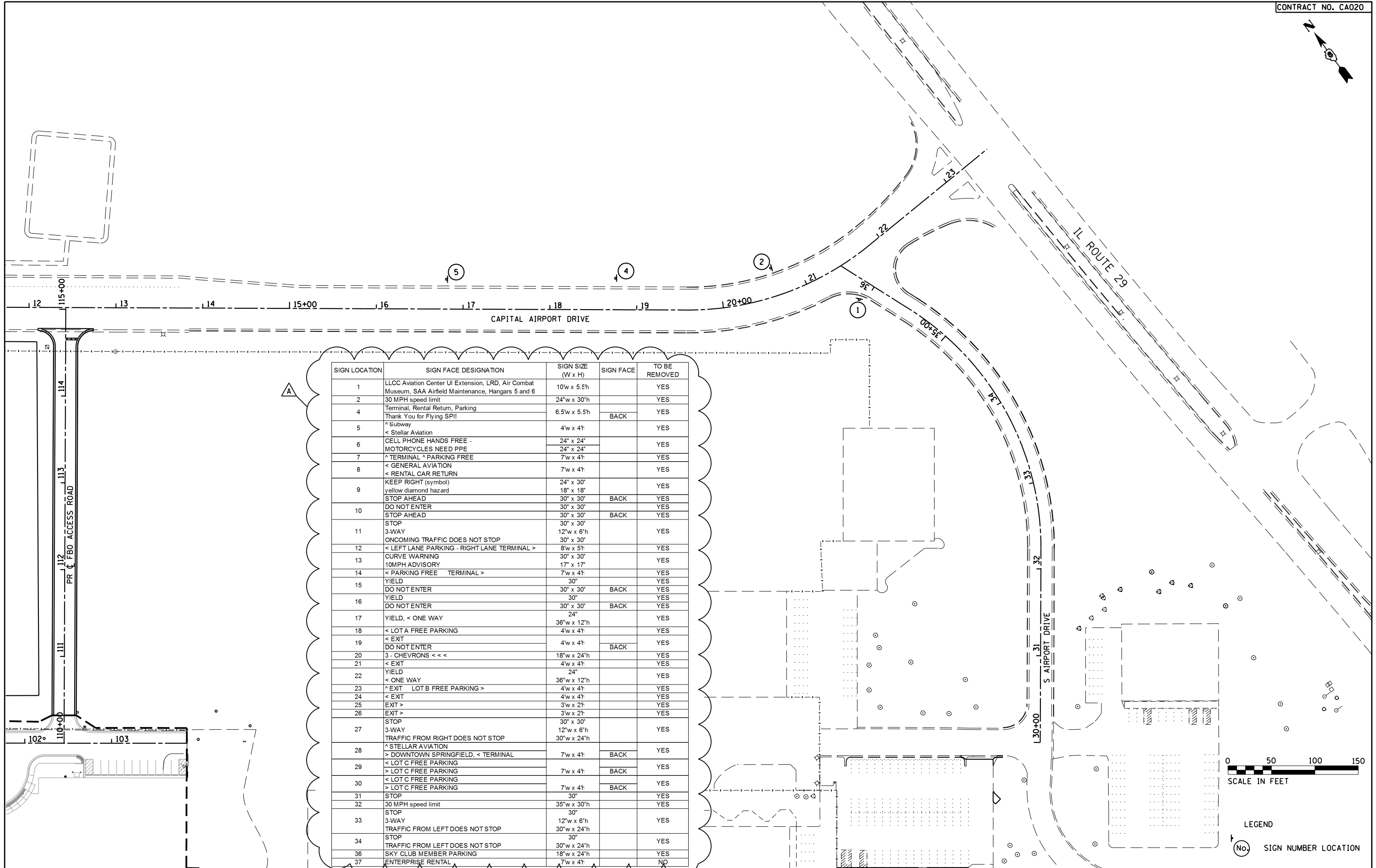
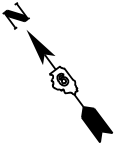
SP	ITEM NO.	ITEM DESCRIPTION	UNITS	QUANTITY
	AS152410	UNCLASSIFIED EXCAVATION	CY	22.0
	AS209604	CRUSHED AGG. BASE COURSE-4"	SY	24.0
	AS209608	CRUSHED AGG. BASE COURSE-8"	SY	26.0
	AS401613	BIT SURF CSE-METHOD I, SUPERPAVE	TON	218.0
	AS401622	BITUMINOUS PATCH	SY	3.0
	AS401650	BITUMINOUS PAVEMENT MILLING	SY	2,589.0
	AS401900	REMOVE BITUMINOUS PAVEMENT	SY	12.0
	AS501506	6" PCC PAVEMENT	SY	18.0
	AS501508	8" PCC PAVEMENT	SY	7.0
	AS501900	REMOVE PCC PAVEMENT	SY	6.0
	AS603510	BITUMINOUS TACK COAT	GAL	228.0
	AS620510	PAVEMENT MARKING	SF	644.0
	AS754410	COMBINATION CURB & GUTTER	LF	158.0
	AS754904	REMOVE COMB CURB & GUTTER	LF	34.0
	AS902640	RELOCATE SHRUB	EACH	3.0
	AS910230	HANDICAP SIGN	EACH	1.0
	AS910243	SIGN SUPPORT	EACH	1.0
	AS910975	RELOCATE ROADWAY SIGN	EACH	2.0



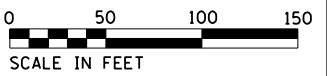
LEGEND
 (No.) SIGN NUMBER LOCATION
 NOTE: SEE NEXT SHEET FOR SIGNING SCHEDULE



KNIGHT Engineers & Architects	USER NAME = jcowley	DESIGNED	REVISED Δ 4/23/2018	STATE OF ILLINOIS DEPARTMENT OF TRANSPORTATION	EXISTING SIGNING	ABRAHAM LINCOLN CAPITAL AIRPORT SPRINGFIELD AIRPORT AUTHORITY	TOTAL SHEETS	SHEET NO.
		DRAWN	REVISED -				75	50
		CHECKED	REVISED -				IL. PROJ. SPI-4635	
		DATE	REVISED -					
PLOT DATE = 4/23/2018								



SIGN LOCATION	SIGN FACE DESIGNATION	SIGN SIZE (W x H)	SIGN FACE	TO BE REMOVED
1	LLCC Aviation Center UI Extension, LRD, Air Combat Museum, SAA Airfield Maintenance, Hangars 5 and 6	10'w x 5.5'h		YES
2	30 MPH speed limit	24" w x 30" h		YES
4	Terminal, Rental Return, Parking Thank You for Flying SPI!	6.5'w x 5.5'h	BACK	YES
5	^ Subway < Stellar Aviation	4'w x 4'h		YES
6	CELL PHONE HANDS FREE - MOTORCYCLES NEED PPE	24" x 24"		YES
7	^ TERMINAL ^ PARKING FREE	7'w x 4'h		YES
8	< GENERAL AVIATION < RENTAL CAR RETURN	7'w x 4'h		YES
9	KEEP RIGHT (symbol) yellow diamond hazard	24" x 30"		YES
	STOP AHEAD	30" x 30"	BACK	YES
10	DO NOT ENTER	30" x 30"		YES
	STOP AHEAD	30" x 30"	BACK	YES
11	STOP 3-WAY ONCOMING TRAFFIC DOES NOT STOP	30" x 30"		YES
	< LEFT LANE PARKING - RIGHT LANE TERMINAL >	12" w x 6' h		YES
12	CURVE WARNING 10MPH ADVISORY	30" x 30"		YES
13	< PARKING FREE TERMINAL >	17" x 17"		YES
14	YIELD	7'w x 4'h		YES
15	DO NOT ENTER	30"	BACK	YES
16	YIELD DO NOT ENTER	30" x 30"	BACK	YES
17	YIELD, < ONE WAY	30"		YES
18	< LOT A FREE PARKING < EXT	36" w x 12" h		YES
19	DO NOT ENTER	4'w x 4'h	BACK	YES
20	3 - CHEVRONS <<<	4'w x 4'h		YES
21	YIELD	18" w x 24" h		YES
22	< ONE WAY	4'w x 4'h		YES
23	^ EXT LOT B FREE PARKING >	24"		YES
24	< EXT	36" w x 12" h		YES
25	EXT >	4'w x 4'h		YES
26	EXT >	3'w x 2'h		YES
27	STOP 3-WAY TRAFFIC FROM RIGHT DOES NOT STOP	3'w x 2'h		YES
	^ STELLAR AVIATION > DOWNTOWN SPRINGFIELD, < TERMINAL	30" x 30"	BACK	YES
28	< LOT C FREE PARKING > LOT C FREE PARKING	7'w x 4'h	BACK	YES
29	< LOT C FREE PARKING > LOT C FREE PARKING	7'w x 4'h	BACK	YES
30	STOP	7'w x 4'h	BACK	YES
31	STOP 30 MPH speed limit	30"		YES
32	STOP 3-WAY TRAFFIC FROM LEFT DOES NOT STOP	35" w x 30" h		YES
33	STOP TRAFFIC FROM LEFT DOES NOT STOP	30"		YES
34	STOP TRAFFIC FROM LEFT DOES NOT STOP	12" w x 6' h		YES
36	SKY CLUB MEMBER PARKING	30" w x 24" h		YES
37	ENTERPRISE RENTAL	18" w x 24" h		YES
		7'w x 4'h		NO



LEGEND
 (No.) SIGN NUMBER LOCATION

KNIGHT
 Engineers & Architects

USER NAME = jcowley
 DESIGNED
 DRAWN
 CHECKED
 PLOT DATE = 4/23/2018
 DATE

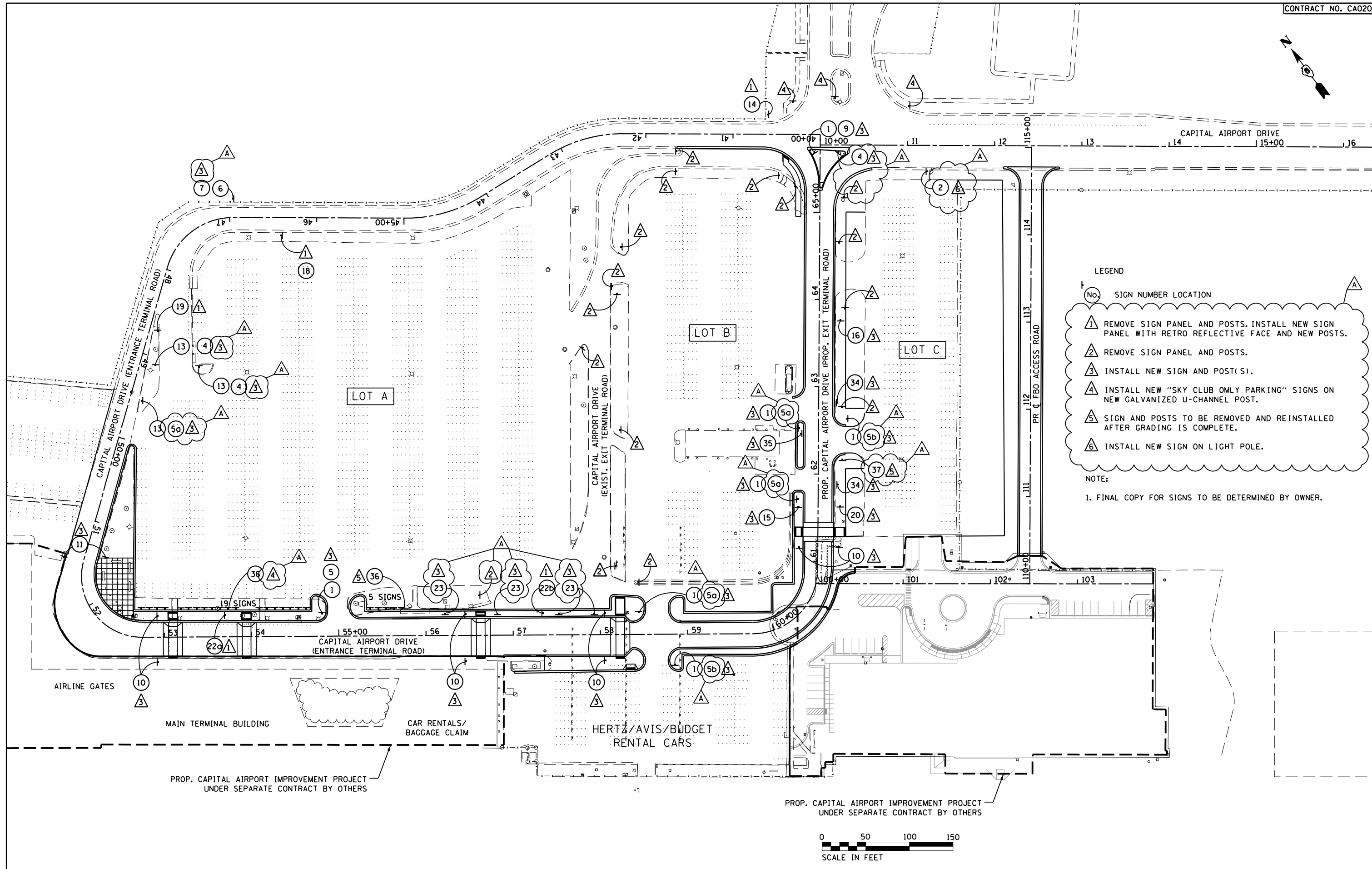
REVISED
 REVISED Δ 4/23/2018
 REVISED -
 REVISED -

STATE OF ILLINOIS
 DEPARTMENT OF TRANSPORTATION

EXISTING SIGNING



TOTAL SHEETS 75
 SHEET NO. 51
 IL. PROJ. SPI-4635



LEGEND

(No.) SIGN NUMBER LOCATION

- ▲ REMOVE SIGN PANEL AND POSTS. INSTALL NEW SIGN PANEL WITH RETRO REFLECTIVE FACE AND NEW POSTS.
- ▲ REMOVE SIGN PANEL AND POSTS.
- ▲ INSTALL NEW SIGN AND POST(S).
- ▲ INSTALL NEW "SKY CLUB ONLY PARKING" SIGNS ON NEW GALVANIZED U-CHANNEL POST.
- ▲ SIGN AND POSTS TO BE REMOVED AND REINSTALLED AFTER GRADING IS COMPLETE.
- ▲ INSTALL NEW SIGN ON LIGHT POLE.

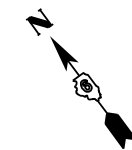
NOTE:

1. FINAL COPY FOR SIGNS TO BE DETERMINED BY OWNER.



KNIGHT Engineers & Architects	USER NAME = jcowley	DESIGNED	REVISED ▲ 4/23/2018	STATE OF ILLINOIS DEPARTMENT OF TRANSPORTATION	PROPOSED SIGNING	ABRAHAM LINCOLN CAPITAL AIRPORT SPRINGFIELD AIRPORT AUTHORITY	TOTAL SHEETS	SHEET NO.
		DRAWN	REVISED -				75	52
		CHECKED	REVISED -				IL. PROJ. SPI-4635	
		DATE	REVISED -					
PLOT DATE = 4/23/2018								

FILE NAME = T:\7486.01\CAD\ISheets\Civil\11 Striping-Signage Plan\7486.01 sht-001-PRSigningPlan.dgn

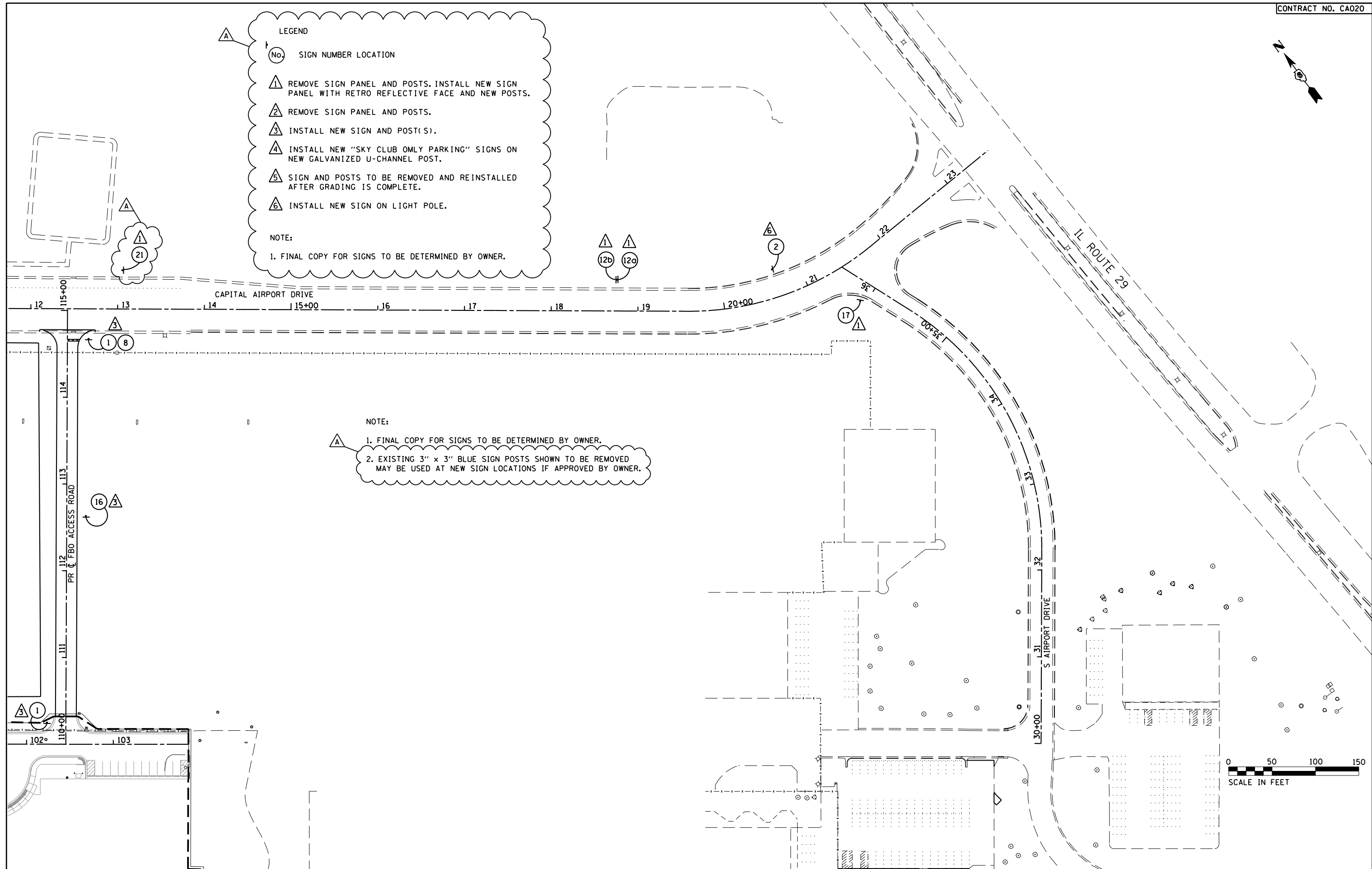


LEGEND

- (No.) SIGN NUMBER LOCATION
- 1 REMOVE SIGN PANEL AND POSTS. INSTALL NEW SIGN PANEL WITH RETRO REFLECTIVE FACE AND NEW POSTS.
- 2 REMOVE SIGN PANEL AND POSTS.
- 3 INSTALL NEW SIGN AND POST(S).
- 4 INSTALL NEW "SKY CLUB ONLY PARKING" SIGNS ON NEW GALVANIZED U-CHANNEL POST.
- 5 SIGN AND POSTS TO BE REMOVED AND REINSTALLED AFTER GRADING IS COMPLETE.
- 6 INSTALL NEW SIGN ON LIGHT POLE.

NOTE:

1. FINAL COPY FOR SIGNS TO BE DETERMINED BY OWNER.



NOTE:

1. FINAL COPY FOR SIGNS TO BE DETERMINED BY OWNER.

2. EXISTING 3" x 3" BLUE SIGN POSTS SHOWN TO BE REMOVED MAY BE USED AT NEW SIGN LOCATIONS IF APPROVED BY OWNER.

KNIGHT Engineers & Architects	USER NAME = jcwley	DESIGNED	REVISED 4/23/2018
	PLOT DATE = 4/23/2018	DRAWN	REVISED -
		CHECKED	REVISED -
		DATE	REVISED -

STATE OF ILLINOIS
DEPARTMENT OF TRANSPORTATION

PROPOSED SIGNING



TOTAL SHEETS	SHEET NO.
75	53
IL. PROJ. SPI-4635	

CATEGORY A

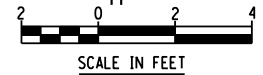
1 30" x 30" 2 30" x 24" 3 30" x 24" 4 30" x 30" 5a 12" x 36" 5b 12" x 36" 6 30" x 30" 7 17" x 17" 8 30" x 24" 9 30" x 24" 10 36" x 36" / 12" x 24" 11 36" x 36" / 12" x 24" 13 36" x 36" 23 18" x 24" 36 12" x 18"

REMOVED POST & PANEL TYPICAL SIDE ELEVATION DETAIL

CATEGORY B

NOTE:

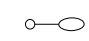
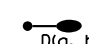
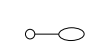
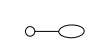
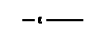





- ALL SIGNS AND POSTS IN CATEGORY A SHALL BE IN ACCORDANCE WITH ALL APPLICABLE IDIOT STANDARDS AND SPECIFICATIONS. (SEE SPECIAL PROVISIONS)
- ALL SIGNS, POSTS, AND MOUNTING ASSEMBLIES IN CATEGORY B SHALL BE INSTALLED TO MATCH EXISTING MATERIALS AND INSTALLATIONS AND IN ACCORDANCE WITH MANUFACTURER'S SPECIFICATIONS. (SEE SPECIAL PROVISIONS)
- FINAL COPY FOR SIGNS TO BE DETERMINED BY OWNER.



GENERAL NOTES

1. SPLICING OF CONDUCTORS SHALL BE IN POLE BASES OR WEATHER TIGHT JUNCTION BOXES ONLY. SPLICES BELOW GRADE WILL NOT BE PERMITTED.
2. LIGHTING CIRCUITS SHALL BE WIRED IN ACCORDANCE WITH THE PLANS. DEVIATIONS WILL NOT BE PERMITTED WITHOUT PRIOR APPROVAL OF THE ENGINEER.
3. THE CONTRACTOR SHALL TAKE ALL NECESSARY MEASURES TO RESTORE ANY SPECIALIZED LANDSCAPING (DECORATIVE ROCKS, PLANTS, ETC.) EXISTING TO REMAIN OR NEW AT NO ADDITIONAL COST TO THE CLIENT.
4. ALL WORK SHALL CONFORM TO THE LATEST IDOT STANDARDS, SPECIAL PROVISIONS, SUPPLEMENTAL SPECIFICATIONS, THE NATIONAL ELECTRICAL CODE, AND THE NATIONAL ELECTRICAL SAFETY CODE.
5. ALL ELECTRICAL EQUIPMENT SHALL BE UL LISTED AND LABELED.
6. ALL CONDUITS SHALL BE SEALED.
7. ALL CIRCUIT WIRES SHALL BE LABELED WITH CIRCUIT IDENTIFICATION.
8. CIRCUITS SHALL BE TESTED PER SPECIFICATIONS.
9. THE LOCATIONS OF ALL PROPOSED EQUIPMENT ARE ILLUSTRATED DIAGRAMMATICALLY. THE ACTUAL LOCATION IN THE FIELD SHALL MEET THE APPROVAL OF THE ENGINEER.
10. THE CONTRACTOR MUST MAINTAIN SAFE EQUIPMENT AND WORKING CLEARANCES FROM THE EXISTING CWLP ELECTRIC LINES. THE CONTRACTOR SHALL PLAN HIS WORK CONSIDERING CWLP'S LINES TO BE IN SERVICE AND ENERGIZED THROUGHOUT THE CONSTRUCTION PERIOD.
11. GROUNDING CONDUCTORS SHALL BE CONTINUOUS.
12. ALL NEW WIRING AND CONDUITS SHALL BE PLACED A MINIMUM OF 36" BENEATH THE FINISHED GRADE.
13. LIGHT POLE FOUNDATIONS SHALL BE INSTALLED WITH A DEPTH AS NOTED ON DETAIL PLANS. IF SOIL CONDITIONS AT FOUNDATION LOCATIONS VARY FROM PREVIOUS REPORT DATA, CONTRACTOR SHALL NOTIFY THE ENGINEER AND THE DEPTH SHALL BE REVISED IN ACORDANCE WITH SECTION 516 OF STANDARD SPECIFICATIONS.
14. REMOVAL OF AN EXISTING LIGHTING UNIT FOR RELOCATION SHALL ALWAYS BE FOLLOWED BY THE REMOVAL OF POLE FOUNDATION.
15. LIGHT FIXTURES TYPE II SHALL BE ONE OF THE FOLLOWING:
MCGRAW-EDISON VTS-E08-LED-E1-T2-7050
LITHONIA LIGHTING CSXI LED 60C 1000 50K T2M
SPAULDING LIGHTING CL1-90L-5K-2
16. LIGHT FIXTURES TYPE V SHALL BE ONE OF THE FOLLOWING:
MCGRAW-EDISON VTS-E08-LED-E1-5W0-7050
LITHONIA LIGHTING DSXI LED P12 50K T5W MVOLT
SPAULDING LIGHTING CL1-90L-5K-5W

LEGEND

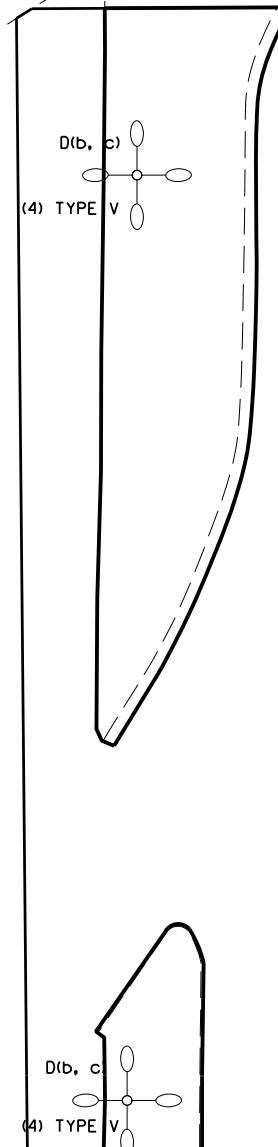
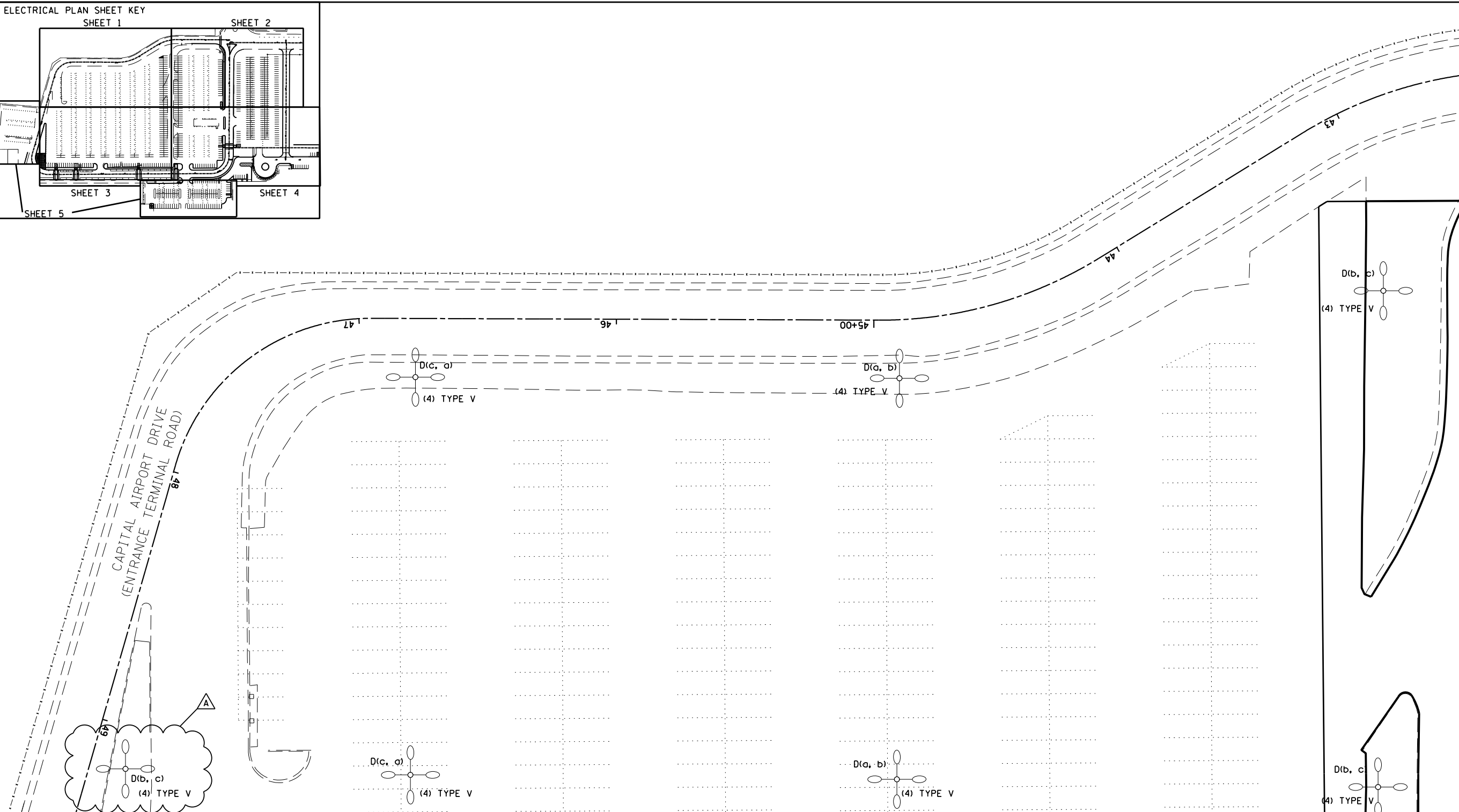
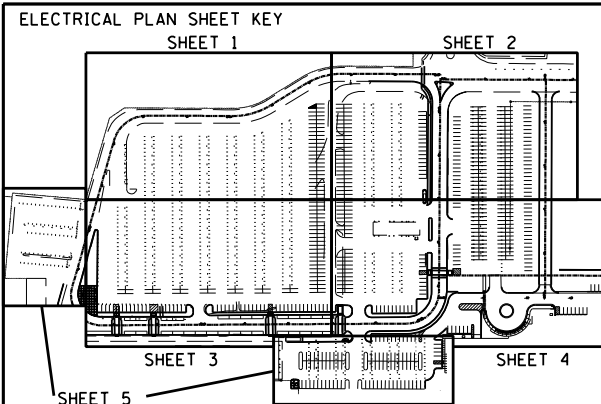
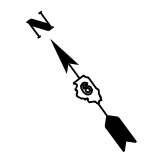
-  EXISTING LIGHT POLE WITH NEW LED LUMINAIRE. NUMBER AND LUMINAIRE TYPE AS SHOWN ON PLAN.
-  NEW LIGHT POLE WITH NEW LED LUMINAIRE ON NEW FOUNDATION, UNLESS OTHERWISE NOTED ON PLAN. NUMBER AND LUMINAIRE TYPE AS SHOWN ON LAN. D(a, b) - BREAKER AND LEGS. SEE DETAIL 4 ON DRAWING E-6.
-  EXISTING LIGHT POLE TO BE RELOCATED.
-  RELOCATED LIGHT POLE WITH NEW LED LUMINAIRE ON NEW FOUNDATION. NUMBER AND LUMINAIRE TYPE AS SHOWN ON PLAN.
-  PROPOSED UNDERGROUND LIGHTING WIRING/CONDUIT
-  PROPOSED UNDERGROUND DATA DUCT BANK
-  PROPOSED UNDERGROUND POWER DUCT BANK
-  EXISTING UNDERGROUND DUCT BANK
-  EXISTING HANDHOLE/MANHOLE
-  PROPOSED HEAVY DUTY HANDHOLE/MANHOLE
P - POWER
D - DATA

BILL OF MATERIALS

ITEM DESCRIPTION	UNITS	QUANTITY
1" PVC DUCT, DIRECT BURY	LF	1950
1 1/4" PVC DUCT, DIRECT BURY	LF	535
HANDHOLE, HEAVY DUTY	EACH	7
REFURBISH LIGHT POLE	EACH	19
LIGHT POLE FOUNDATION	EACH	14
LIGHT POLE FOUNDATION TYPE F7A (DETAIL 3 ON E-7)	EACH	6
LIGHTING CONTROLLER FOUNDATION (DETAIL 2 ON E-7)	EACH	1
REMOVE CONCRETE FOUNDATION	EACH	5
RELOCATE EXISTING LIGHT POLE	EACH	4
4-WAY CONCRETE ENCASED DUCT	LF	865
6-WAY CONCRETE ENCASED DUCT	LF	935
PARKING LED LUMINAIRE, TYPE V DISTRIBUTION	EACH	8
ROADWAY LED LUMINAIRE, TYPE II DISTRIBUTION	EACH	13
LIGHT POLE	EACH	26
RDWY LIGHT POLE	EACH	19
LUMINAIRE BRACKET	EACH	21
RELOCATE LIGHTING CONTROLLER	EACH	1
REMOVE LIGHT POLE	EACH	19
REMOVE LIGHT POLE & FIXTURE	EACH	10
1/C NO. 6 XLP-USE	LF	10400
1/C NO. 2 XLP-USE	LF	60
RELOCATE LED LUMINAIRE	EACH	86
ROADWAY LIGHT POLE W/ FIXTURE	EACH	9
ROADWAY LIGHT POLE, 2-DAVIT ARMS, 30 FT MH, W/ LED LUMINAIRES	EACH	1

PAY ITEM AR801661 REMOVE EXISTING LUMINAIRE, SALVAGE REMOVED

FILE NAME = T:\7486.01\CAD\Sheets\Civil\08 Lighting Plan\7486.01-sht-Lighting00.Gen Notes.dgn



SEE SHEET 2 FOR CONTINUATION

SEE SHEET 3 FOR CONTINUATION

A NOTE REMOVED

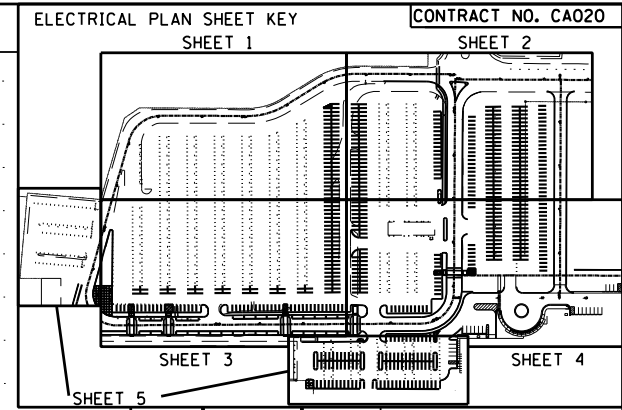
KEY NOTE:

ADDITIVE 2: ALTERNATE PARKING LOT LIGHTING. REPLACE LIGHT POLE WITH NEW IN LIEU OF REFURBISHING POLE. MATCH EXISTING BOLT PATTERN 6" SQUARE, 8.5" BOLT CIRCLE. EXISTING POLES TO REMAIN PROPERTY OF SPRINGFIELD AIRPORT AUTHORITY.



	USER NAME = jcowley	DESIGNED	REVISED A 4/23/2018	STATE OF ILLINOIS DEPARTMENT OF TRANSPORTATION	ELECTRICAL PLAN - SHEET 1		TOTAL SHEETS	SHEET NO.
		DRAWN	REVISED -				75	56
		CHECKED	REVISED -				IL. PROJ. SPI-4635	DRAWING E-1
		DATE	REVISED -					
PLOT DATE = 4/23/2018								

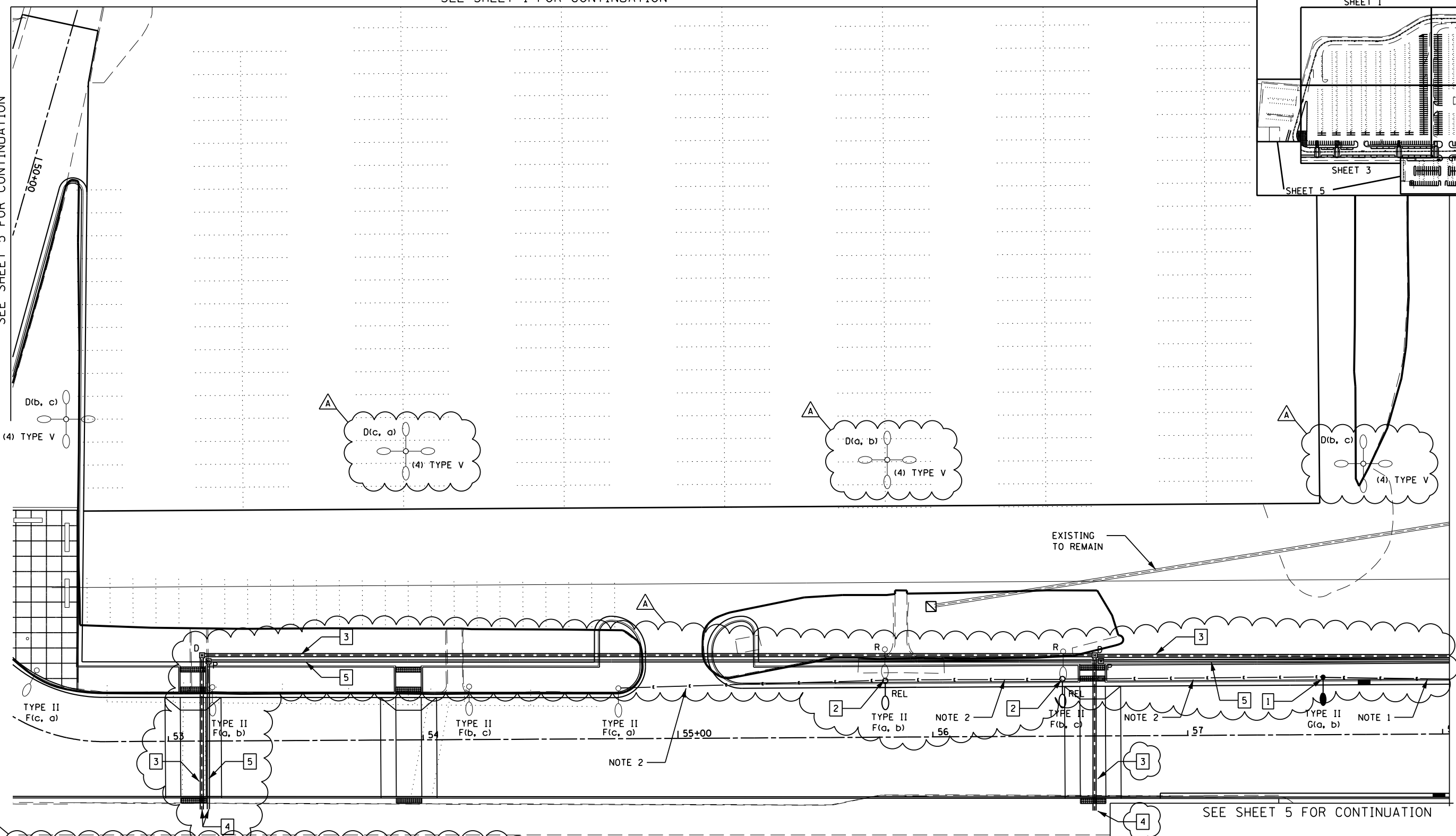
SEE SHEET 1 FOR CONTINUATION



CONTRACT NO. CA020

SEE SHEET 5 FOR CONTINUATION

SEE SHEET 4 FOR CONTINUATION



SEE SHEET 5 FOR CONTINUATION

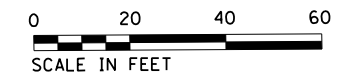
KEY NOTES:

- 1 PROVIDE LIGHT POLE AND FOUNDATION PER DETAILS 1 AND 3 ON DRAWING E-7. PROVIDE LED FIXTURE PER GENERAL NOTES ON DRAWING E-0.
- 2 PROVIDE FOUNDATION PER DETAIL 3 ON DRAWING E-7. PROVIDE LED FIXTURE PER GENERAL NOTES ON DRAWING E-0.
- 3 PROPOSED DATA DUCTBANK 6-2" PVC CONDUIT ENCASED IN CONCRETE
- 4 CONDUIT TO BE CAPPED FOR FUTURE USE. CONCRETE ENCASEMENT TO STOP 6" BEHIND CONDUIT END.
- 5 PROPOSED POWER DUCTBANK 4-4" PVC CONDUIT ENCASED IN CONCRETE

NOTES:

- 1. 6 #6 AND 1 #6 GRD, 1 1/4" PVC CONDUIT
- 2. 3 #6 AND 1 #6 GRD, 1" PVC CONDUIT

ADDITIVE 2: ALTERNATE PARKING LOT LIGHTING. REPLACE LIGHT POLE WITH NEW IN LIEU OF REFURBISHING POLE. MATCH EXISTING BOLT PATTERN 6" SQUARE, 8.5" BOLT CIRCLE. EXISTING POLES TO REMAIN PROPERTY OF SPRINGFIELD AIRPORT AUTHORITY.



KNIGHT Engineers & Architects	USER NAME = jcowley	DESIGNED	REVISED	4/23/2018
		DRAWN	REVISED	-
		CHECKED	REVISED	-
	PLOT DATE = 4/23/2018	DATE	REVISED	-

**STATE OF ILLINOIS
DEPARTMENT OF TRANSPORTATION**

ELECTRICAL PLAN - SHEET 3

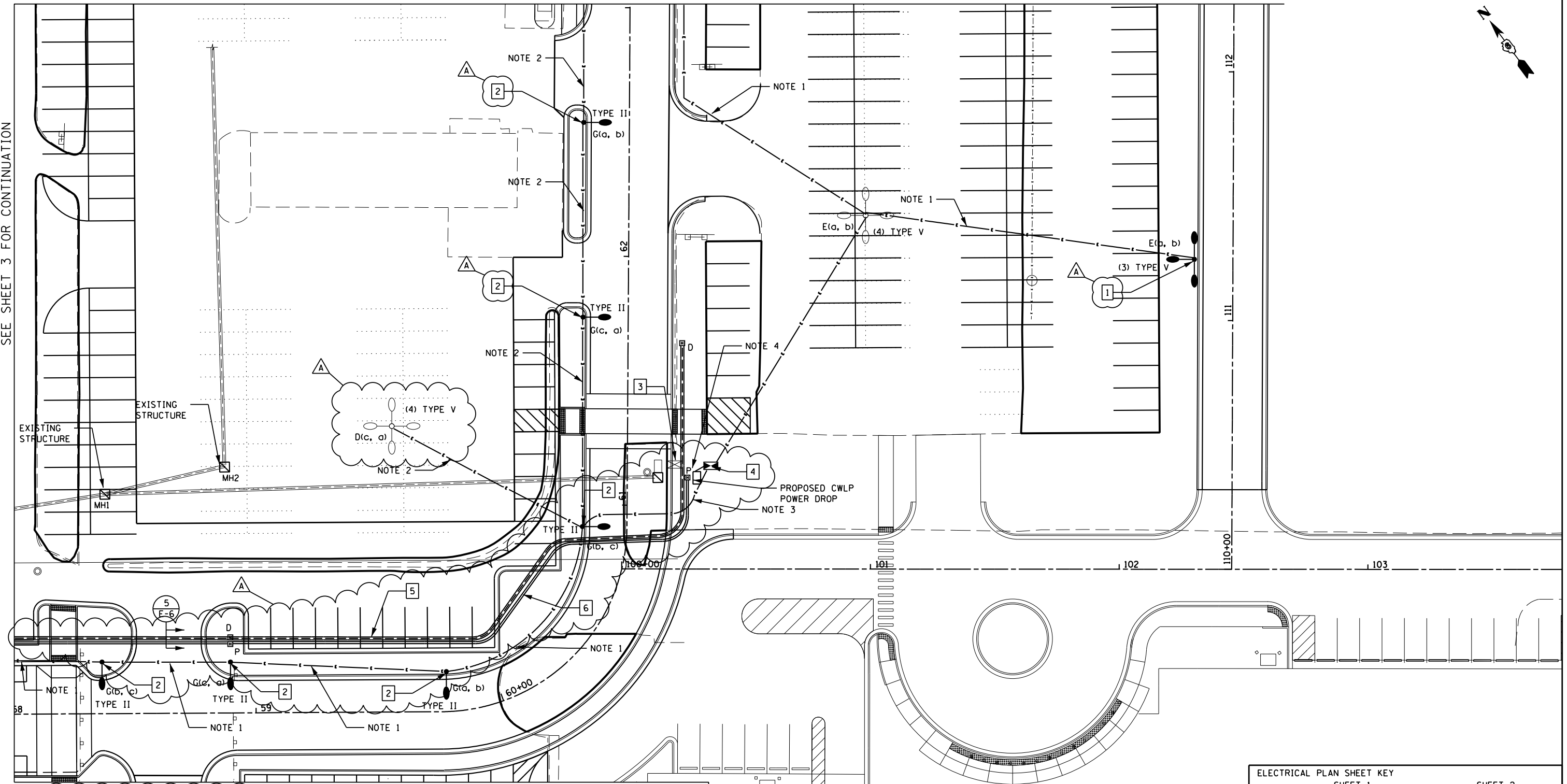


TOTAL SHEETS	SHEET NO.
75	59
IL. PROJ. SPI-4635	DRAWING E-3

FILE NAME = T:\7486.01\CAD\Sheets\Civil\08 Lighting Plan\7486.01-sht-Lighting03.SWCorner.dgn

SEE SHEET 2 FOR CONTINUATION

SEE SHEET 3 FOR CONTINUATION



SEE SHEET 5 FOR CONTINUATION

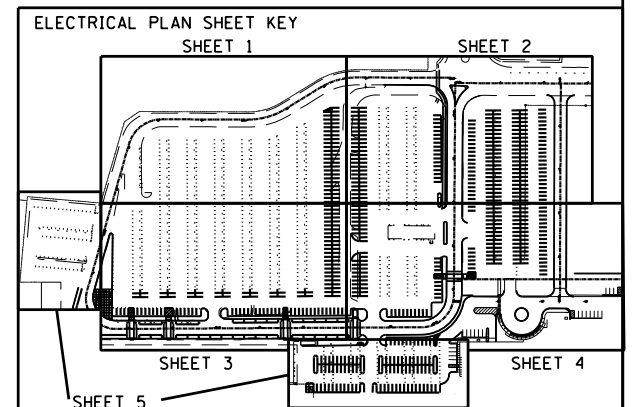
KEY NOTES:

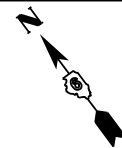
- 1 PROVIDE LIGHT POLE AND FOUNDATION PER DETAILS 1 AND 2 ON DRAWING E-7. PROVIDE LED FIXTURE PER GENERAL NOTES ON DRAWING E-0.
- 2 PROVIDE LIGHT POLE AND FOUNDATION PER DETAILS 1 AND 3 ON DRAWING E-7. PROVIDE LED FIXTURE PER GENERAL NOTES ON DRAWING E-0.
- 3 REMOVE EXISTING CONTROLLER AND FOUNDATION AND INSTALL NEW HANDHOLE PER DETAIL ON DRAWING E-7.
- 4 INSTALL NEW FOUNDATION AND CONTROLLER PER DETAIL ON DRAWING E-6 AND ROUTE NEW CONDUIT AND WIRING FROM NEW HANDHOLE.
- 5 PROPOSED DATA DUCTBANK 6-2" PVC CONDUIT ENCASED IN CONCRETE
- 6 PROPOSED POWER DUCTBANK 4-4" PVC CONDUIT ENCASED IN CONCRETE

NOTES:

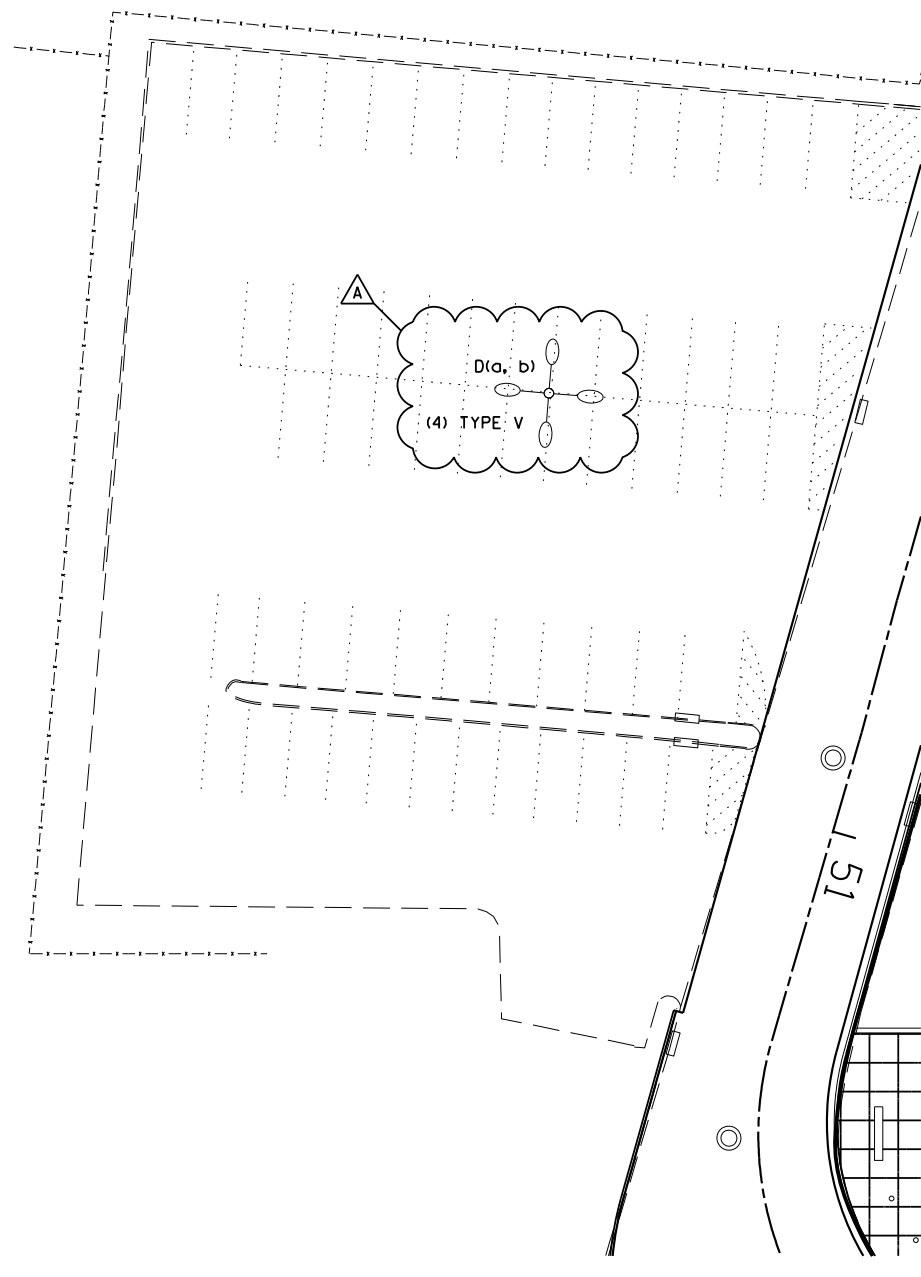
- 1. 6 #6 AND 1 #6 GRD, 1 1/4" PVC CONDUIT
- 2. 3 #6 AND 1 #6 GRD, 1" PVC CONDUIT
- 3. 9 #6 AND 1 #6 GRD, 1 1/4" PVC CONDUIT
- 4. 3 #2, 1 #8 GRD, 1 1/4" PVC

ADDITIVE 2: ALTERNATE PARKING LOT LIGHTING. REPLACE LIGHT POLE WITH NEW IN LIEU OF REFURBISHING POLE. MATCH EXISTING BOLT PATTERN 6" SQUARE, 8.5" BOLT CIRCLE. EXISTING POLES TO REMAIN PROPERTY OF SPRINGFIELD AIRPORT AUTHORITY.

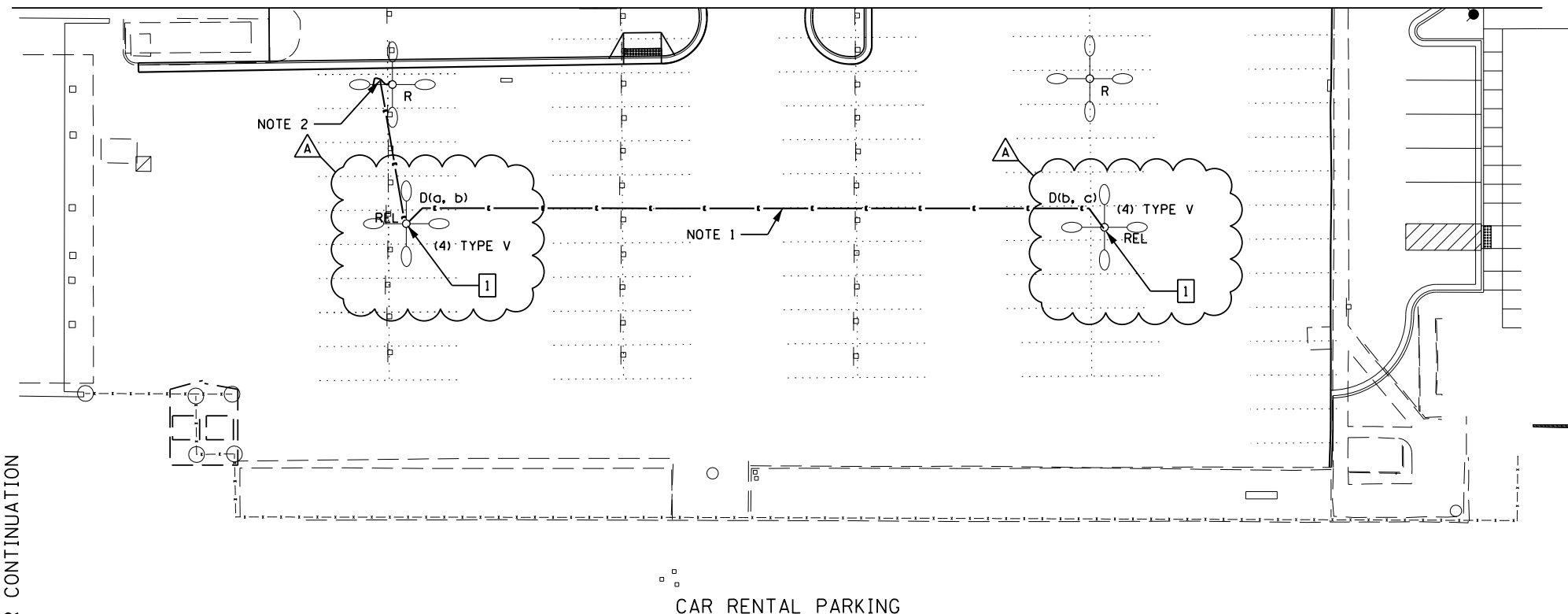




SEE SHEETS 3 AND 4 FOR CONTINUATION



SEE SHEETS 1 AND 3 FOR CONTINUATION

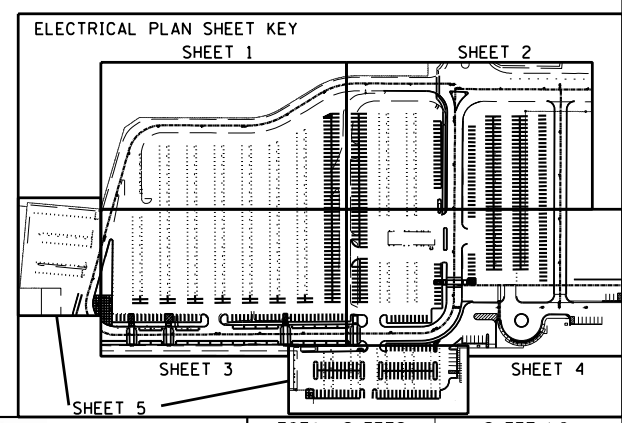
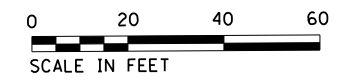


- NOTES:**
- 2 #6 AND 1 #6 GRD, 1" PVC CONDUIT
 - 3 #6 AND 1 #6 GRD, 1" PVC CONDUIT. FEED PARKING LIGHTING FROM THE SAME CIRCUIT/CONNECTION POINT AS BEFORE THE RELOCATION OF LIGHT POLES. EXISTING CONDUIT SHALL BE INTERCEPTED AND EXTENDED TO POLE'S NEW LOCATION. RUN NEW WIRING FROM THE CONNECTION POINT/POLE TO RELOCATED POLE.

EMPLOYEE PARKING

KEY NOTE:
 1 PROVIDE FOUNDATION PER DETAIL 2 ON DRAWING E-7. PROVIDE LED FIXTURE PER GENERAL NOTES ON DWG. E-2.

ADDITIVE 2: ALTERNATE PARKING LOT LIGHTING. REPLACE LIGHT POLE WITH NEW IN LIEU OF REFURBISHING POLE. MATCH EXISTING BOLT PATTERN 6" SQUARE, 8.5" BOLT CIRCLE. EXISTING POLES TO REMAIN PROPERTY OF SPRINGFIELD AIRPORT AUTHORITY.



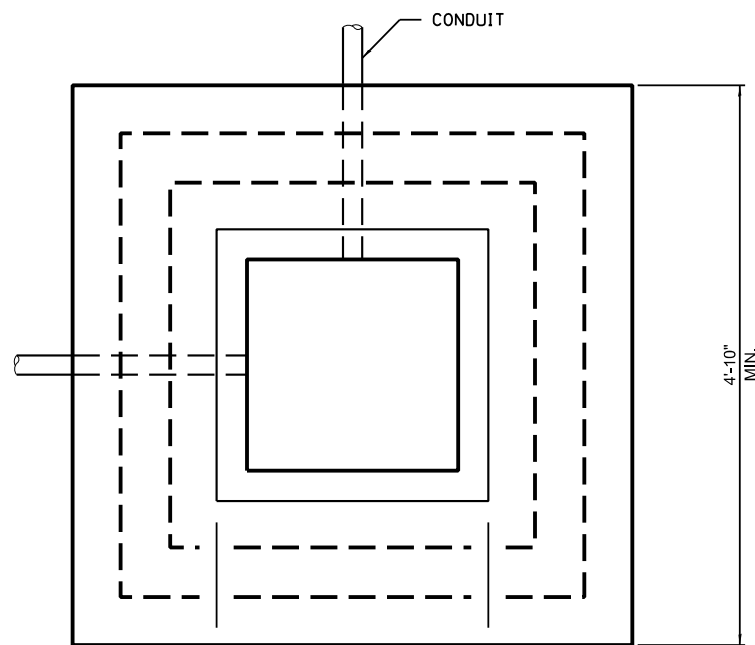
KNIGHT Engineers & Architects	USER NAME = jcowley	DESIGNED	REVISED ^A 4/23/2018
	PLOT DATE = 4/23/2018	DRAWN	REVISED -
		CHECKED	REVISED -
		DATE	REVISED -

**STATE OF ILLINOIS
 DEPARTMENT OF TRANSPORTATION**

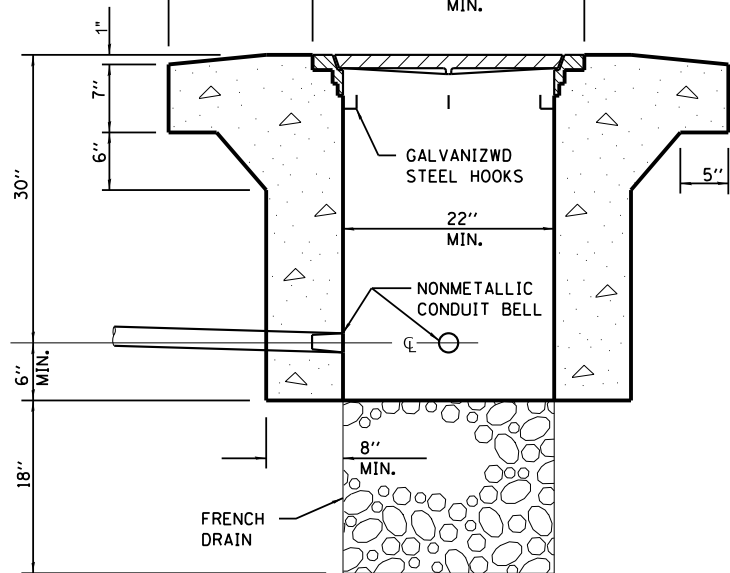
ELECTRICAL PLAN - SHEET 5



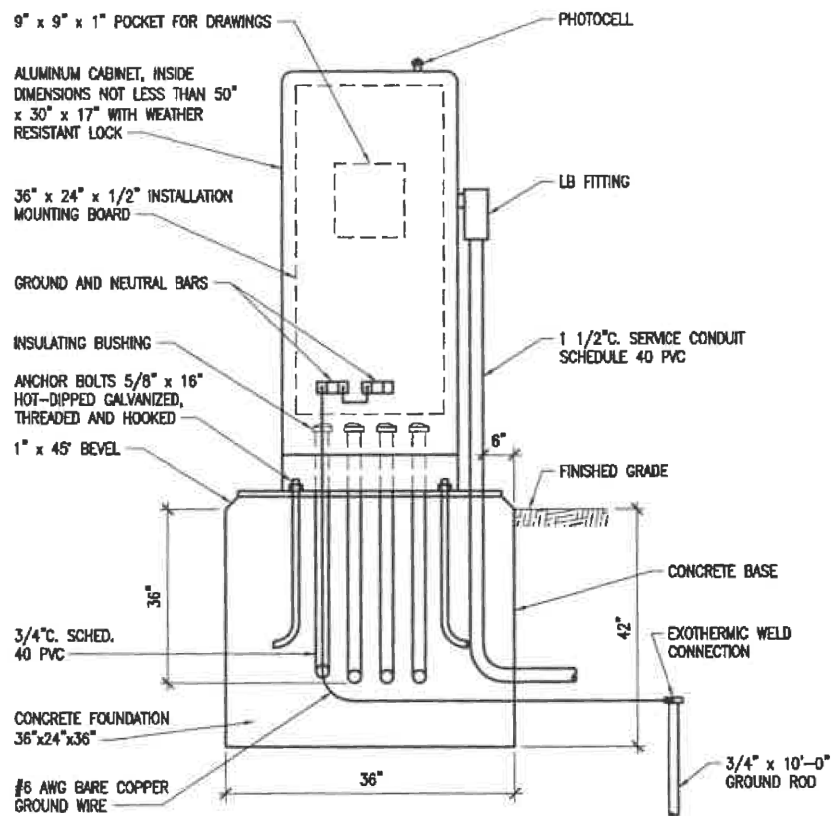
TOTAL SHEETS	SHEET NO.
75	61
IL. PROJ. SPI-4635	DRAWING E-5



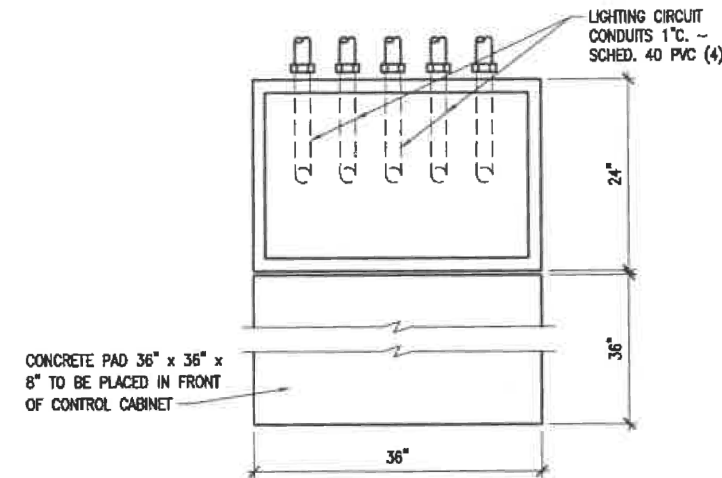
PLAN



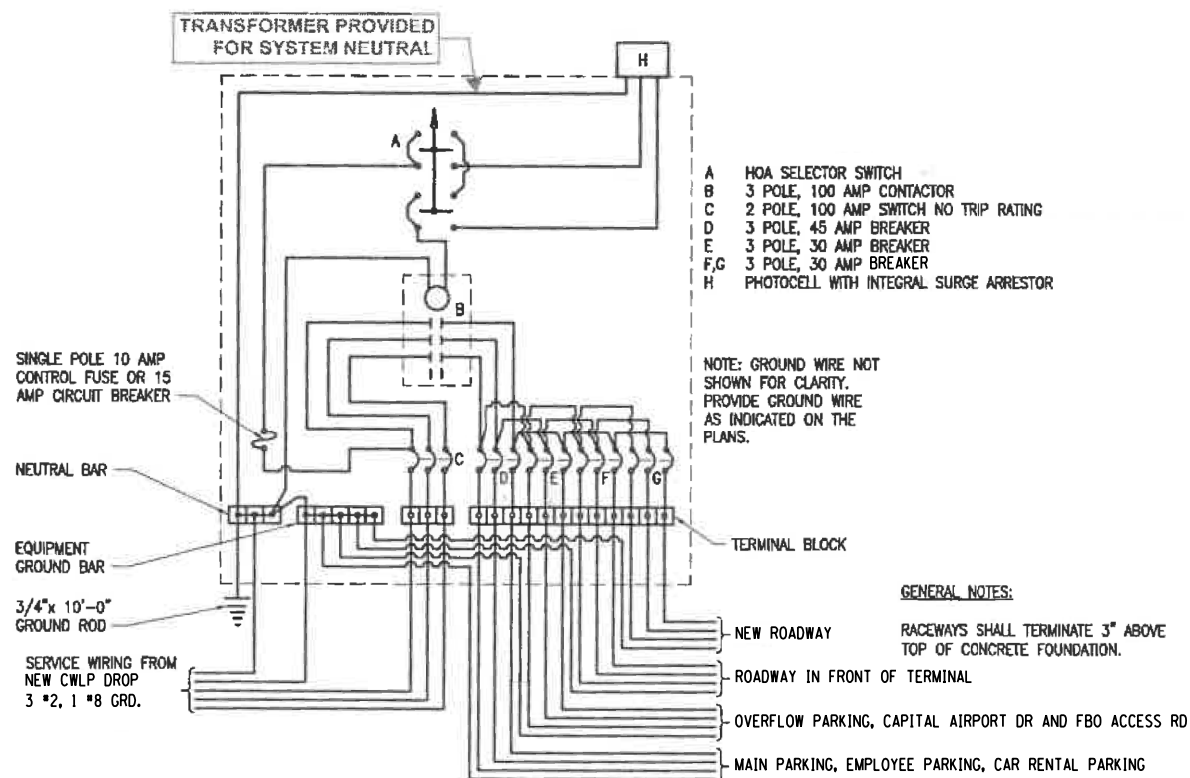
1 ELEVATION
PORTLAND CEMENT CONCRETE
HEAVY DUTY



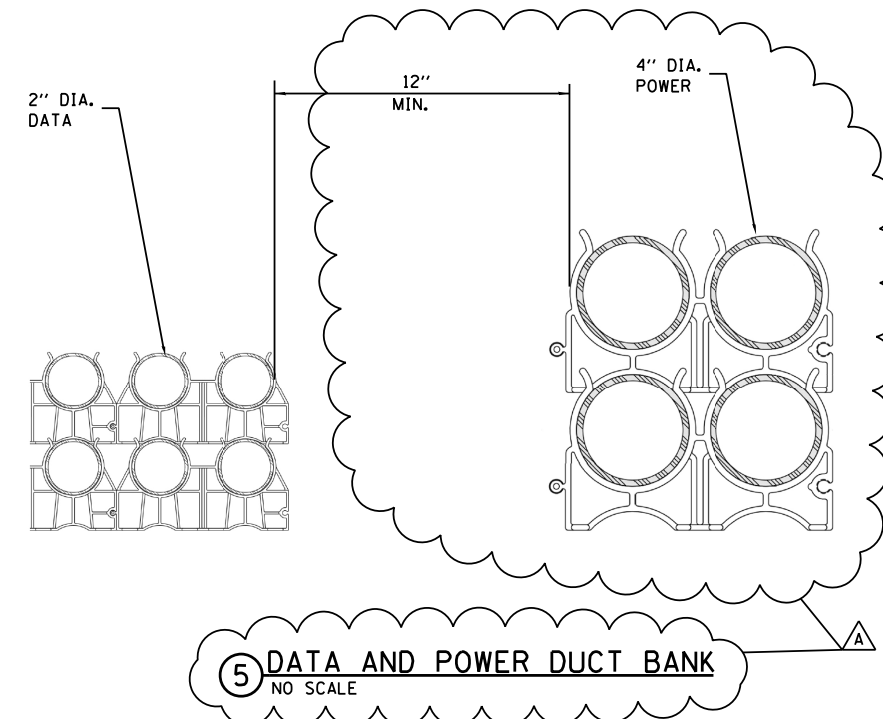
2 LIGHTING CONTROLLER INSTALLATION
NO SCALE (FRONT VIEW)



3 LIGHTING CONTROLLER FOUNDATION
NO SCALE (TOP VIEW)



4 AIRPORT ROADWAY AND PARKING LOT LIGHTING CONTROLLER
NO SCALE



5 DATA AND POWER DUCT BANK
NO SCALE

KNIGHT Engineers & Architects	USER NAME = jcowley	DESIGNED JSA	REVISED Δ 4/23/2018
		DRAWN MB	REVISED -
		CHECKED MCP	REVISED -
	PLOT DATE = 4/23/2018	DATE	REVISED -

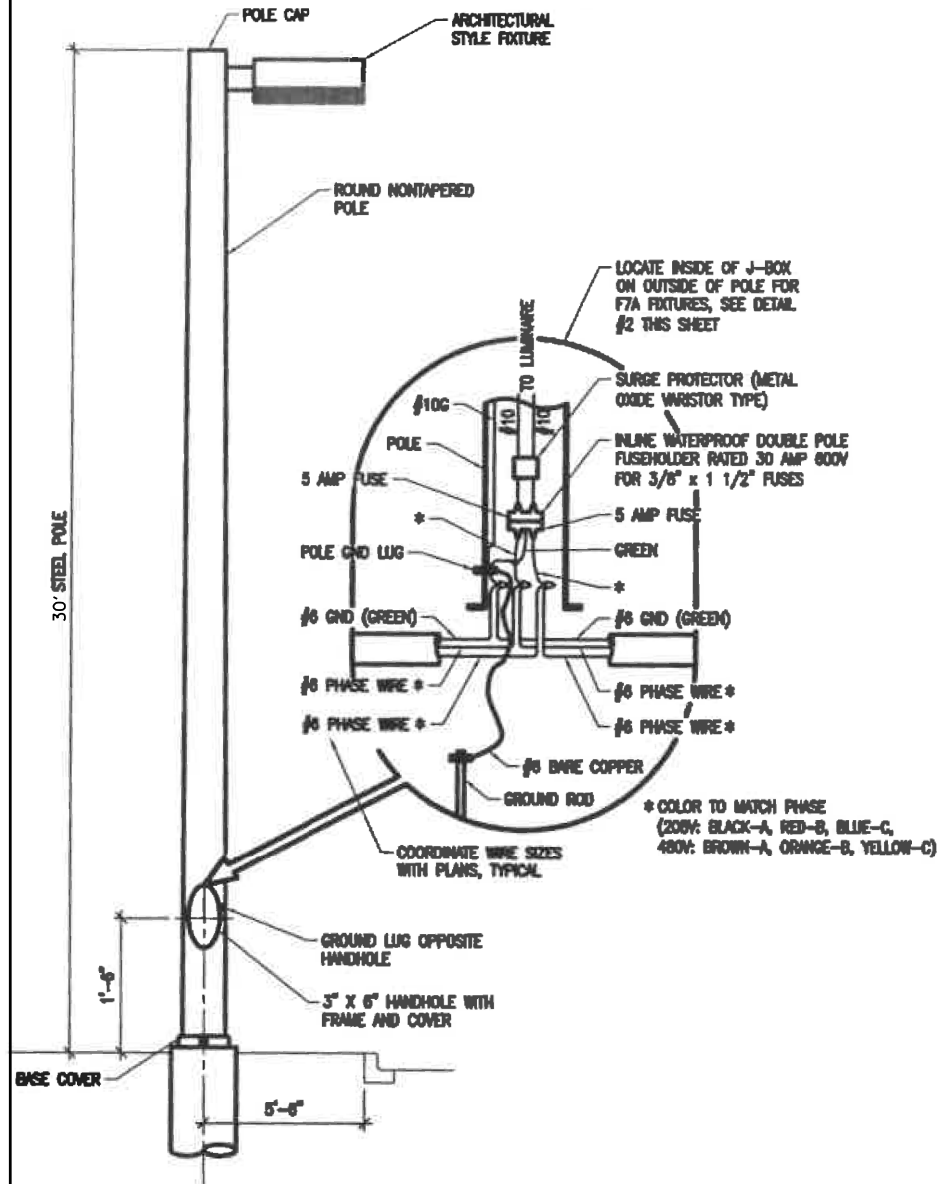
STATE OF ILLINOIS
DEPARTMENT OF TRANSPORTATION

ELECTRICAL DETAILS

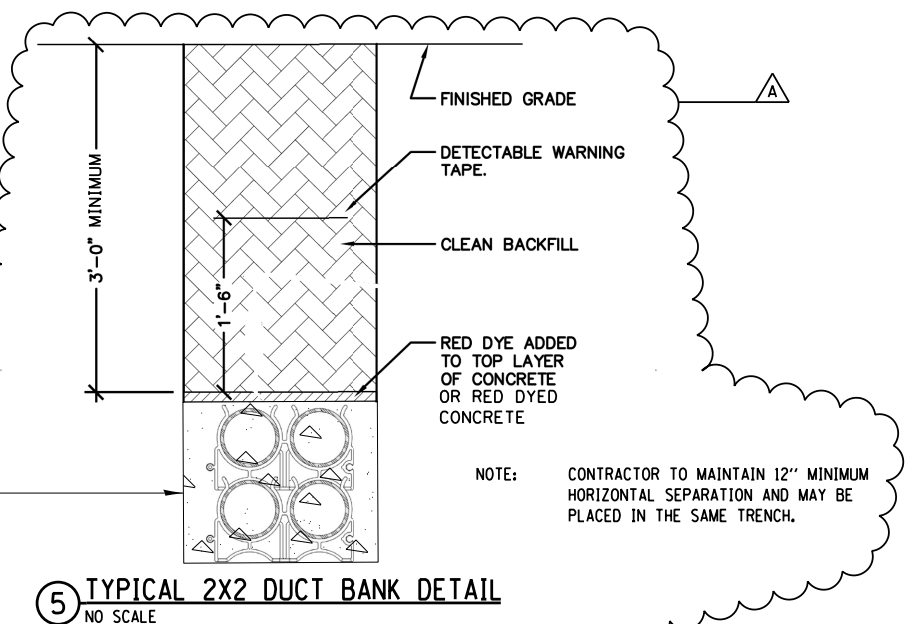
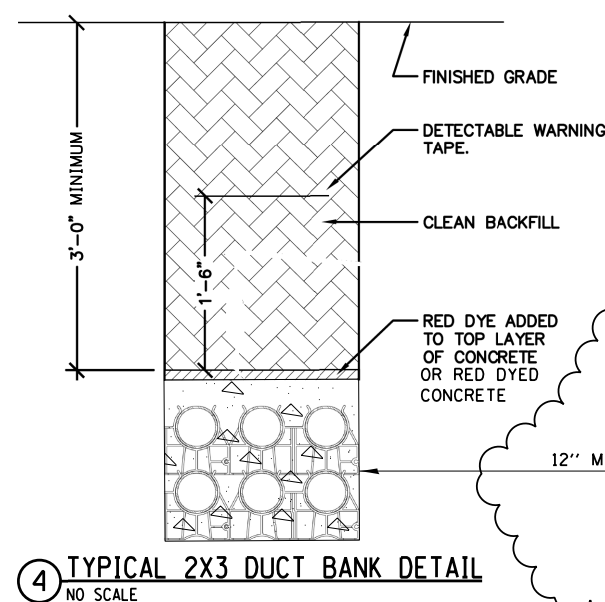
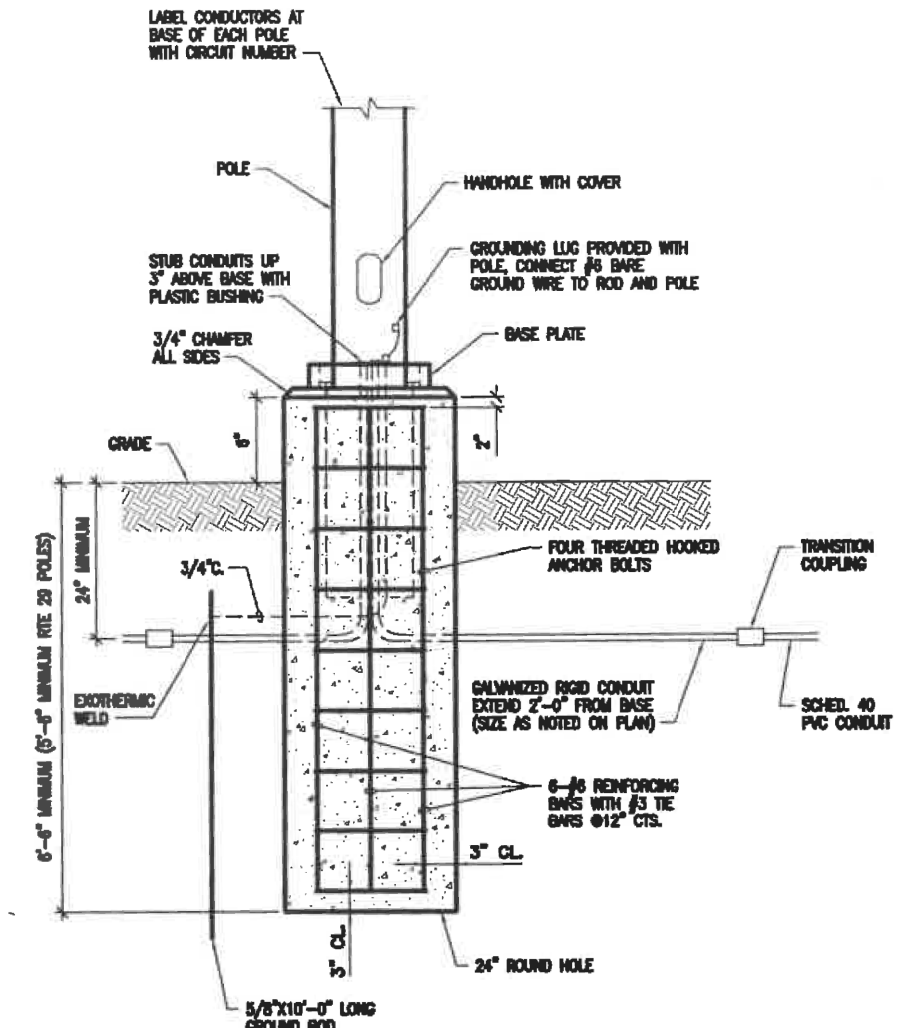
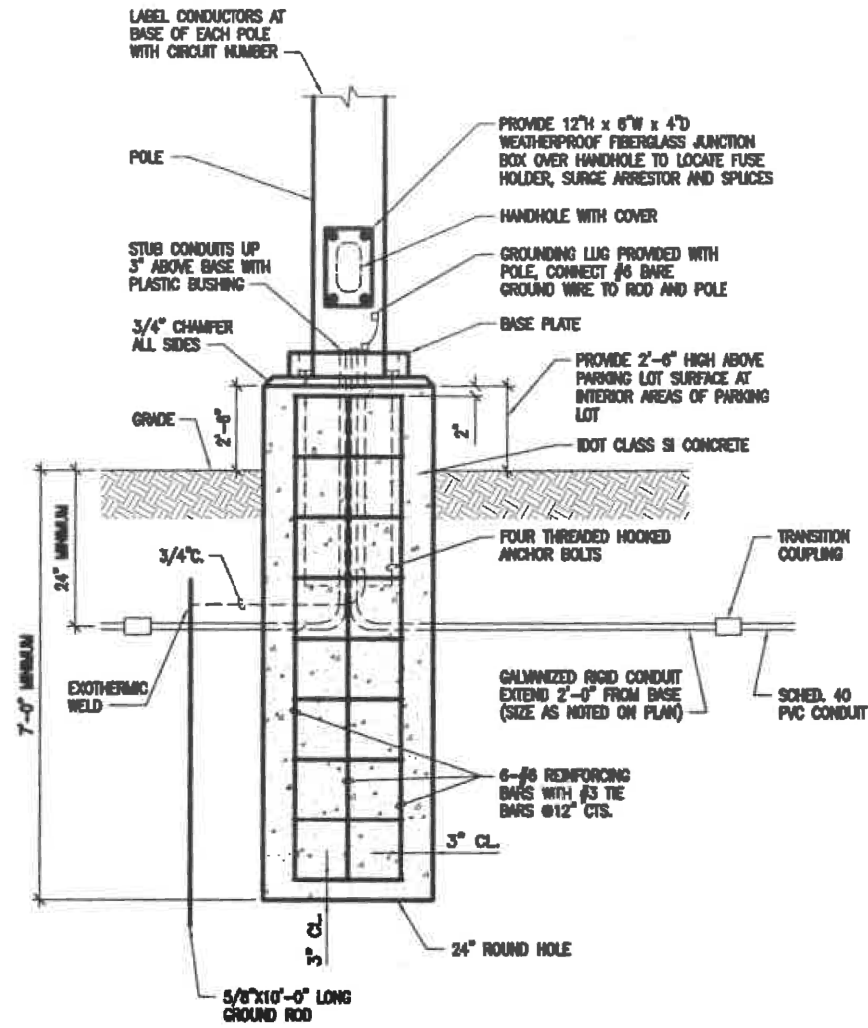


TOTAL SHEETS	SHEET NO.
75	62
IL. PROJ. SPI-4635	DRAWING E-6

FILE NAME = T:\7486_01\CAD\ISheets\Civil\08 Lighting Plan\7486_01-sht-Lighting06.Details.dgn



NOTE: WIRING TO LUMINAIRE SHALL BE LABELED AT BASE OF POLE HANDHOLE TO INDICATE ORIENTATION OF THE LUMINAIRE (E.G. N, S, E, W)



801-4.2 FLAGPOLE INSTALLATION

- A. General: Install flagpoles where indicated and according to Contract Documents, Shop Drawings and manufacturer's written instructions.
- B. Ground Sleeve Assembly.
- C. Mounting Brackets and Bases: Anchor brackets and bases securely to structural support with fasteners as indicated on Shop Drawings.

BASIS OF PAYMENT

Payment will be made under:

ITEM AR801652 FLAG POLE – PER EACH

ITEM AR801660 – REMOVE & REINSTALL SECURITY EQUIPMENT

DESCRIPTION

801-1.1 This item includes all labor, equipment and material needed to disconnect and remove the existing security equipment units from their existing poles at stations 43+20, 68.6' Lt., and 57+70, 106' Lt. Both units will be temporarily stored by the owner while the existing poles are removed and refurbished. This item also includes reinstalling and reconnecting each unit on their respective refurbished pole after the refurbished poles have been re-erected.

BASIS OF PAYMENT

Payment will be made under:

ITEM AR801660 REMOVE & REINSTALL SECURITY EQUIP. – PER EACH

ITEM 910 – ROADWAY & PARKING LOT SIGNING, AND LIGHTING DUCT

DESCRIPTION

910-1.1 This item includes all labor, materials and equipment needed to remove and replace roadway and directional signs within the Terminal Complex area in accordance with all applicable sections of the Standard Specifications for Road and Bridge Construction, adopted April 1, 2016, or as recommended by the sign manufacturer. The new signs shall match the existing signs as closely as possible except as modified herein and in the contract plans.

MATERIALS

910-2.1. All products and materials for this item shall be provided as defined below:

Category A:

All signs and posts in Category A as shown and detailed in the contract plans shall be in accordance with all applicable IDOT Division of Highways standards and specifications.

Category B:

All signs, posts and mounting assemblies in Category B as shown and detailed in the contract plans shall match existing signs as closely as possible, and shall be of one of the manufacturers listed below:

1. Howard Industries
2. GPP-Charleston Industries, LLC
3. ASI Signage

Proposed signs in Category B, as detailed in the contract plans, shall generally meet the following specifications:

1. 4' x 4' or smaller: Single aluminum sign panel 0.125 " thick with reflective vinyl lettering. Mounting shall be double, 3" square posts and flat caps, custom painted to match existing or as approved by the owner.
2. Larger than 4' wide: Double aluminum sign panels, 0.050" thick each, with 2 3/4" thick polystyrene core between each sign panel with reflective lettering. Mounting shall be double, 3" square posts and flat caps, custom painted to match existing or as approved by the Owner.
3. As specified by the manufacturer.

CONSTRUCTION METHODS

910-3.1 All signs shall be constructed as follows:

Category A:

All signs in Category A shall be installed in accordance with all applicable sections in the Standard Specifications for Road and Bridge Construction, Adopted April 1, 2016.

Category B:

All signs in Category B shall be installed in accordance with manufacturer's specifications.

SHOP DRAWINGS

910-4.1 Shop drawing for all sign panels, posts and assemblies shall be approved by the Resident Engineer prior to ordering signs as specified and detailed in Category A and Category B.

METHOD OF MEASUREMENT

910-5.1 Sign panels, posts and mounting assemblies specified and detailed in the contract plans for Category A and Category B signs shall be measured as follows:

Category A:

All sign panels, except stop signs and handicapped sign, shall be measured per square foot for each sign panel needed to complete each sign shown in Category A. Stop signs and handicap signs will be measured per each specified at the locations in the contract plans. Telescoping posts needed for each sign specified in Category A shall be measured for each post used to mount all signs in Category A.

Category B:

All sign panels shall be measured per square foot for each sign panel needed to complete each sign panel assembly shown in Category B in the contract plans. Sign supports needed for each sign assembly specified in Category B shall be measured for support assembly used to mount each sign assembly in Category B.

BASIS OF PAYMENT

Payment will be made under:

ITEM AR801669	DETECTABLE WEARING SURFACE – PER SQUARE YARD
ITEM AR901975	RELOCATE ROADWAY SIGN – PER EACH
ITEM AR910201	SIGN PANEL – PER SQUARE FOOT
ITEM AR910230	HANDICAP SIGN – PER EACH
ITEM AR910240	SIGN SUPPORT – PER EACH
ITEM AR910250	TELESCOPING SIGN SUPPORT – PER EACH
ITEM AR910915	REMOVE ROADWAY SIGN – PER EACH
ITEM AR910975	RELOCATE ROADWAY SIGN – PER EACH
ITEM AR950110	ROADWAY SIGN, STOP – PER EACH