

F.A.I. RTE.	SECTION	COUNTY	TOTAL SHEETS	SHEET NO.
80	99-1-1-3	WILL	34	1

D-91-052-06

STATE OF ILLINOIS  
DEPARTMENT OF TRANSPORTATION  
DIVISION OF HIGHWAYS

**PLANS FOR PROPOSED  
HIGHWAY**

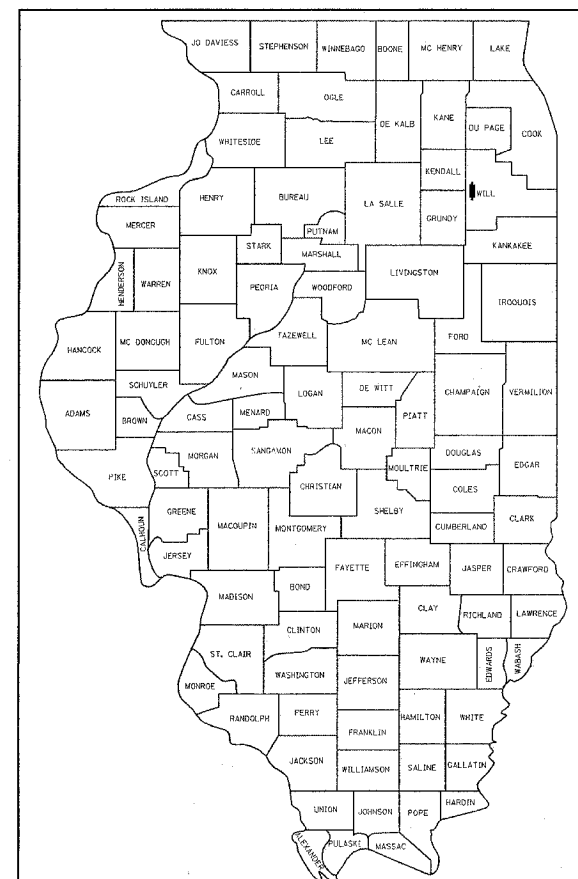
**FAI 80 : (INTERSTATE 80)  
(I-55 TO WILL /GRUNDY COUNTY LINE)  
SECTION: 99-1-1-3**

**HIGH TENSION MEDIAN CABLE INSTALLATION**

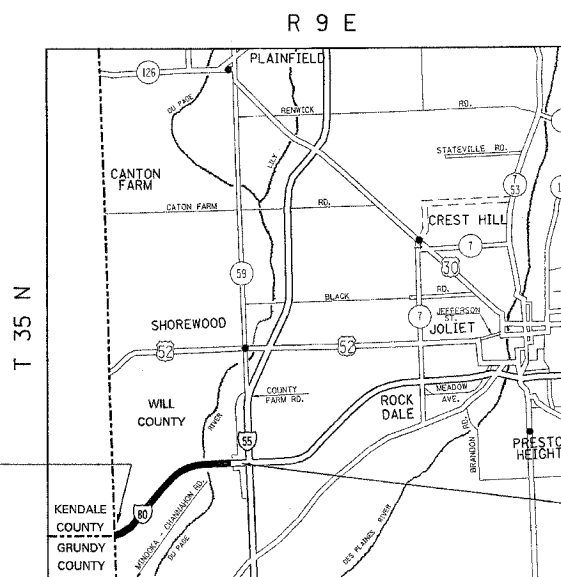
**PROJECT: HS-080-4 (187)123  
WILL COUNTY  
C-91-052-06**

FOR INDEX OF SHEETS, SEE SHEET NO. 2

THE IMPROVEMENT IS LOCATED IN UNINCORPORATED TROY TOWNSHIP IN WILL COUNTY



LOCATION OF SECTION INDICATED THIS: -



IMPROVEMENT  
BEGINS: STA. 1761+00

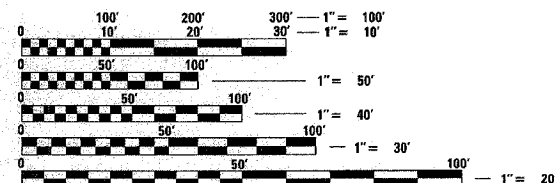
IMPROVEMENT  
ENDS: STA. 1942+00

**TRAFFIC DATA**

ADT = 41,500  
POSTED SPEED LIMIT= 65 MPH

TROY TOWNSHIP

GROSS LENGTH OF IMPROVEMENT = 18,100 LINEAL FEET = 3.43 MILES  
NET LENGTH OF IMPROVEMENT = 16,950 LINEAL FEET = 3.21 MILES



FULL SIZE PLANS HAVE BEEN PREPARED USING STANDARD ENGINEERING SCALES. REDUCED SIZED PLANS WILL NOT CONFORM TO STANDARD SCALES. IN MAKING MEASUREMENTS ON REDUCED PLANS, THE ABOVE SCALES MAY BE USED.

J.U.L.I.E.  
JOINT UTILITY LOCATION INFORMATION FOR EXCAVATION  
1-800-892-0123

CONTRACT NO. 60A42

STATE OF ILLINOIS  
DEPARTMENT OF TRANSPORTATION  
DIVISION OF HIGHWAYS

SUBMITTED *March 10, 2006*

*Diane M. O'Keefe/Ed*  
DEPUTY DIRECTOR OF HIGHWAYS, REGION ENGINEER

*March 24, 2006*

*Mike Hine/Ed*  
ENGINEER OF DESIGN AND ENVIRONMENT

*March 24, 2006*

*Milton R. Sear, P.E./Ed*  
DIRECTOR OF HIGHWAYS, CHIEF ENGINEER

**PRINTED BY THE AUTHORITY  
OF THE STATE OF ILLINOIS**

DISTRICT ONE DESIGN PLAN PREPARATION ENGINEER:  
KEN ENG/JENPAI CHANG (847)705-4432