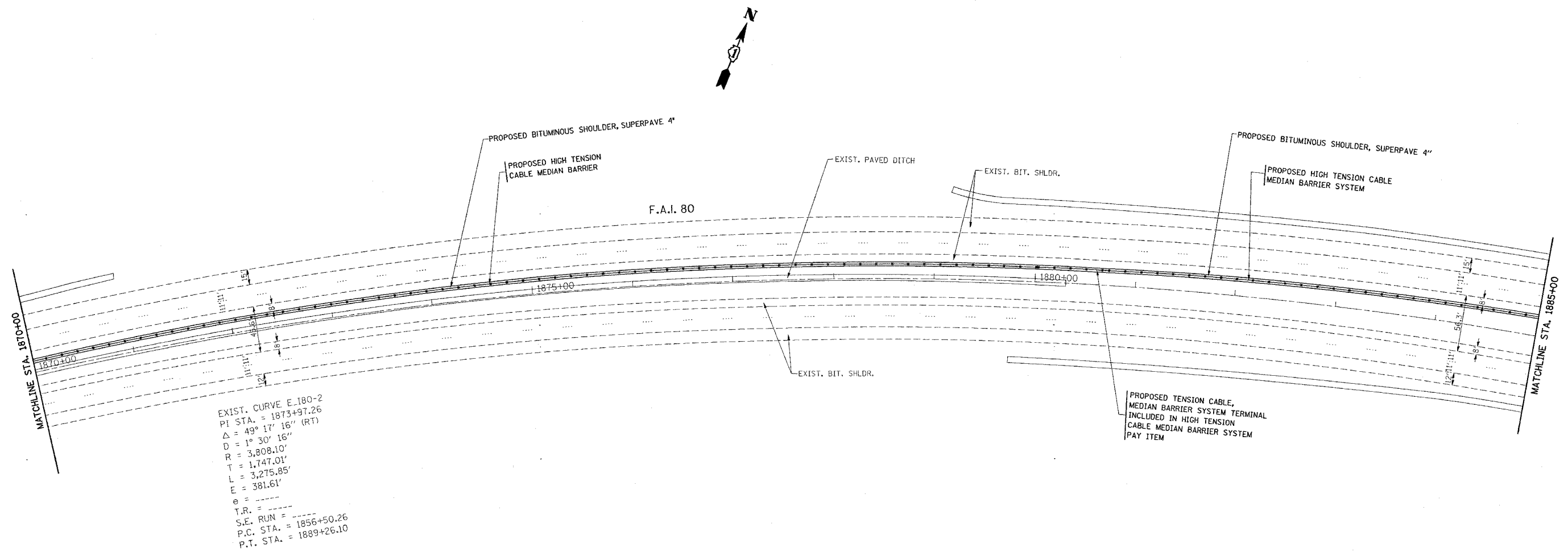


F.A.I. RTE.	SECTION	COUNTY	TOTAL SHEETS	SHEET NO.
80	99-1-I-3	WILL	34	15
STA. 1870+00		TO STA. 1885+00		
FED. ROAD DIST. NO.		ILLINOIS	FED. AID PROJECT	



EXIST. CURVE E-180-2
 PI STA. = 1873+97.26
 $\Delta = 49^\circ 17' 16''$ (RT)
 $D = 1^\circ 30' 16''$
 $R = 3,808.10'$
 $T = 1,747.01'$
 $L = 3,275.85'$
 $E = 381.61'$
 $\theta = \dots$
 $T.R. = \dots$
 $S.E. RUN = 1856+50.26$
 $P.C. STA. = 1889+26.10$
 $P.T. STA. = 1889+26.10$

PLOT DATE = 3/9/2006
 PLOT SCALE = 50.0000 / IN.
 USER NAME = ulr-ahkd

REVISIONS	
NAME	DATE

ILLINOIS DEPARTMENT OF TRANSPORTATION

ROADWAY PLAN
 I-80
 GRUNDY COUNTY LINE TO I-55

SCALE: VERT. 1"=50'
 HORIZ. 1"=50'

DATE 3/9/2006

DRAWN BY
 CHECKED BY