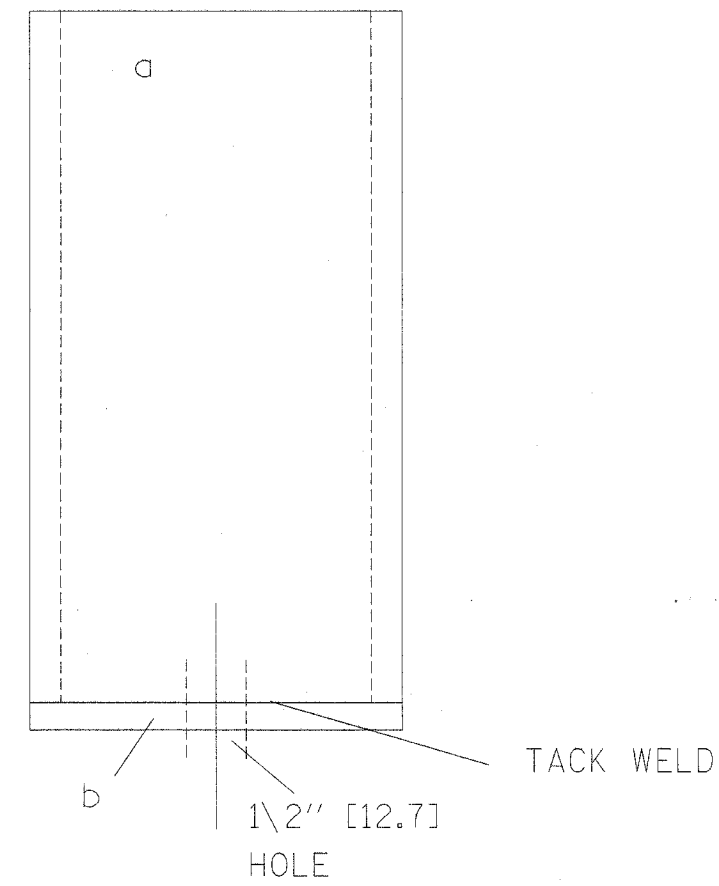


F.A.I. RTE.	SECTION	COUNTY	TOTAL SHEETS	SHEET NO.
80	99-1-1-3	WILL	34	26
STA.		TO STA.		
FED. ROAD DIST. NO.	ILLINOIS	FED. AID PROJECT		

Gibraltar  
 Cable Barrier System  
 12/21/05 - TJ

PART # 4-LT46  
 TERMINAL POST SLEEVE  
 GALVANIZED WT = 12.1#

- 1 - a HSS 4 x 3 x 15"
- 1 - a HSS [101.60x76.20x381.00]
- 1 - b PL 4 x 3 x 1/8
- 1 - b PL [101.60x76.20x3.175]



REVISIONS		ILLINOIS DEPARTMENT OF TRANSPORTATION
NAME	DATE	
		INTERSTATE 80 PLAN DETAILS

SCALE: VERT. DATE  
 HORIZ. DRAWN BY  
 CHECKED BY