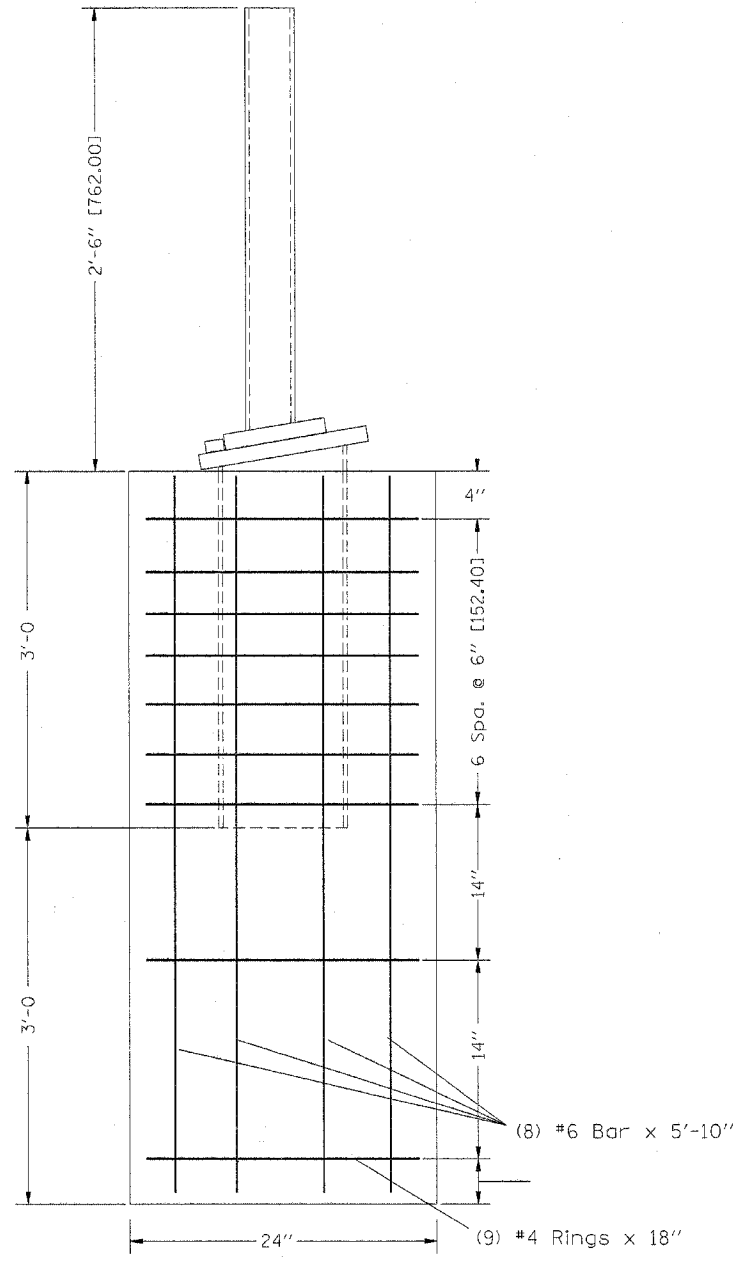


F.A.I. RTE.	SECTION	COUNTY	TOTAL SHEETS	SHEET NO.
80	99-1-1-3	WILL	34	34
STA.		TO STA.		
FED. ROAD DIST. NO.	ILLINOIS	FED. AID PROJECT		



PLOT DATE = 3/1/2006
 FILE NAME = c:\pco\meta\185206\detail.dgn
 PLOT SCALE = 50.0000 / IN.
 USER NAME = c:\pco\meta\185206\detail.dgn

REVISIONS	
NAME	DATE

ILLINOIS DEPARTMENT OF TRANSPORTATION
 INTERSTATE 80
 PLAN DETAILS
 ANCHOR POST REPAIR

SCALE: VERT. DRAWN BY
 HORIZ. CHECKED BY
 DATE