

F.A.I. RTE.	SECTION	COUNTY	TOTAL SHEETS	SHEET NO.
80	99-1-1-3	WILL	34	1

D-91-052-06

STATE OF ILLINOIS  
 DEPARTMENT OF TRANSPORTATION  
 DIVISION OF HIGHWAYS  
**PLANS FOR PROPOSED  
 HIGHWAY**

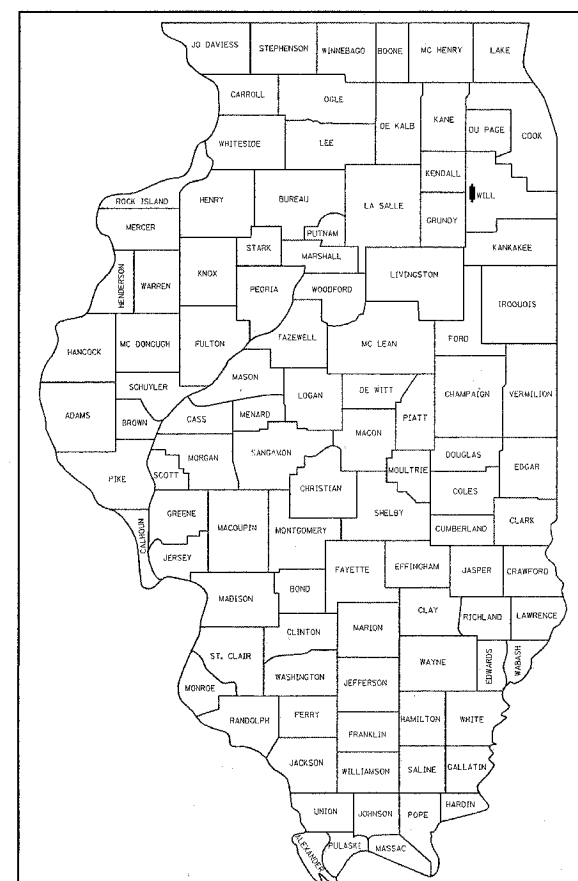
FOR INDEX OF SHEETS, SEE SHEET NO. 2

THE IMPROVEMENT IS LOCATED IN UNINCORPORATED TROY TOWNSHIP IN WILL COUNTY

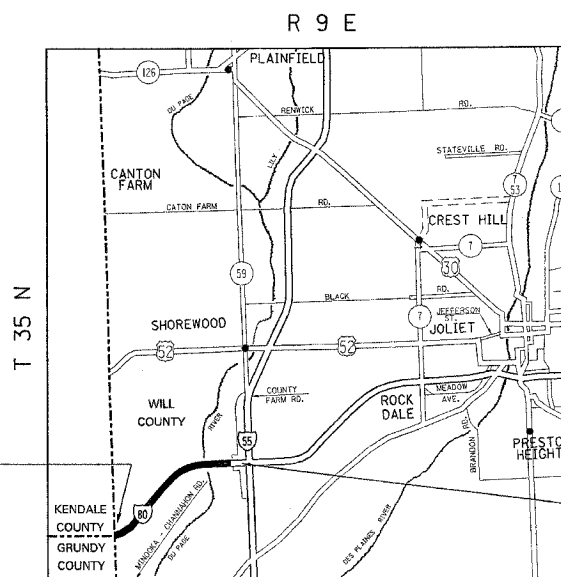
FAI 80 : (INTERSTATE 80)  
 (I-55 TO WILL /GRUNDY COUNTY LINE)  
 SECTION: 99-1-1-3

**HIGH TENSION MEDIAN CABLE INSTALLATION**

PROJECT: *HS-080-4(187)123*  
 WILL COUNTY  
 C-91-052-06



LOCATION OF SECTION INDICATED THIS: - [shaded area] -



**TRAFFIC DATA**

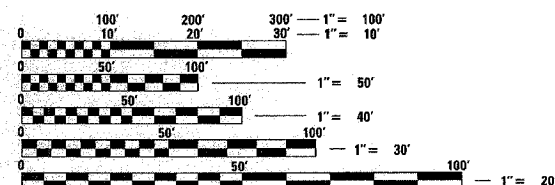
ADT = 41,500  
 POSTED SPEED LIMIT= 65 MPH

IMPROVEMENT  
 BEGINS: STA. 1761+00

IMPROVEMENT  
 ENDS: STA. 1942+00

TROY TOWNSHIP

GROSS LENGTH OF IMPROVEMENT = 18,100 LINEAL FEET = 3.43 MILES  
 NET LENGTH OF IMPROVEMENT = 16,950 LINEAL FEET = 3.21 MILES



FULL SIZE PLANS HAVE BEEN PREPARED USING STANDARD ENGINEERING SCALES. REDUCED SIZED PLANS WILL NOT CONFORM TO STANDARD SCALES. IN MAKING MEASUREMENTS ON REDUCED PLANS, THE ABOVE SCALES MAY BE USED.

J.U.L.I.E.  
 JOINT UTILITY LOCATION INFORMATION FOR EXCAVATION  
 1-800-892-0123

CONTRACT NO. 60A42

STATE OF ILLINOIS  
 DEPARTMENT OF TRANSPORTATION  
 DIVISION OF HIGHWAYS

SUBMITTED *March 10, 2006*  
*Diane M. O'Keefe/CD*  
 DEPUTY DIRECTOR OF HIGHWAYS, REGION ENGINEER  
*March 24, 2006*  
*Mike Hine/ED*  
 ENGINEER OF DESIGN AND ENVIRONMENT  
*March 24, 2006*  
*Milton R. Sear, P.E./CD*  
 DIRECTOR OF HIGHWAYS, CHIEF ENGINEER

**PRINTED BY THE AUTHORITY  
 OF THE STATE OF ILLINOIS**

DISTRICT ONE DESIGN PLAN PREPARATION ENGINEER:  
 KEN ENG/JENPAI CHANG (847)705-4432



F.A. RTE.	SECTION	COUNTY	TOTAL SHEETS	SHEET NO.
80	99-1-I-3	WILL	34	3
FED. ROAD DIST. NO. 1		ILLINOIS	HIGHWAY PROJECT	
D-91-052-06			CONTRACT 60A42	

SUMMARY OF QUANTITIES			CONSTRUCTION TYPE CODE					
CODE NO	ITEM	UNIT	TOTAL QUANTITIES	90% FED. 10% STATE URBAN SFTY-3J				
Z0029650	HIGH TENSION CABLE MEDIAN BARRIER SYSTEM	FOOT	16950	16950				
20201200	REMOVAL AND DISPOSAL OF UNSUITABLE MATERIAL	CU YD	3730	3730				
21101615	TOPSOIL FURNISH AND PLACE, 4"	SQ YD	21312	21312				
21400100	GRADING AND SHAPING DITCHES	FOOT	16950	16950				
25000210	SEEDING, CLASS 2A	ACRE	4.5	4.5				
25000400	NITROGEN FERTILIZER NUTRIENT	POUND	405	405				
25000500	PHOSPHORUS FERTILIZER NUTRIENT	POUND	405	405				
25000600	POTASSIUM FERTILIZER NUTRIENT	POUND	405	405				
25100630	EROSION CONTROL BLANKET	SQ YD	21312	21312				
48202200	BITUMINOUS SHOULDERS SUPERPAVE 4"	SQ YD	7210	7210				
67000400	ENGINEER'S FIELD OFFICE, TYPE A	CAL MO	4	4				
67100100	MOBILIZATION	L SUM	1	1				
X7011015	TRAFFIC CONTROL AND PROTECTION (EXPRESSWAYS)	L SUM	1	1				
X7015000	CHANGEABLE MESSAGE SIGN	CAL MO	3	3				
Z0013798	CONSTRUCTION LAYOUT	L SUM	1	1				

SUMMARY OF QUANTITIES			CONSTRUCTION TYPE CODE					
CODE NO	ITEM	UNIT	TOTAL QUANTITIES					

3/10/2006 2:48:13 PM C:\PROJECTS\1032016\SUM32

REVISIONS	
NAME	DATE

ILLINOIS DEPARTMENT OF TRANSPORTATION  
SUMMARY OF QUANTITIES

F.A.I. RTE.	SECTION	COUNTY	TOTAL SHEETS	SHEET NO.
80	99-1-1-3	WILL	34	4
STA.		TO STA.		
FED. ROAD DIST. NO. 1		ILLINOIS FED. AID PROJECT		
CONTRACT 60A42				

SOCKETED POST AND CABLE (FOR TL-4 SYSTEM)

STA.	TO	STA.	LENGTH (FT.)
1761+00	TO	1774+35	1335
1775+30	TO	1802+55	2725
1805+00	TO	1908+30	10330
1913+70	TO	1930+50	1680
1933+20	TO	1942+00	880
TOTAL LENGTH			16950

WRGT-RD END TERMINALS (FOR TL-4 SYSTEM)

STA.	EACH
1761+00	1
1774+35	1
1775+30	1
1802+55	1
1805+00	1
1908+30	1
1913+70	1
1930+50	1
1933+20	1
1942+00	1
TOTAL	10

REVISIONS	
NAME	DATE

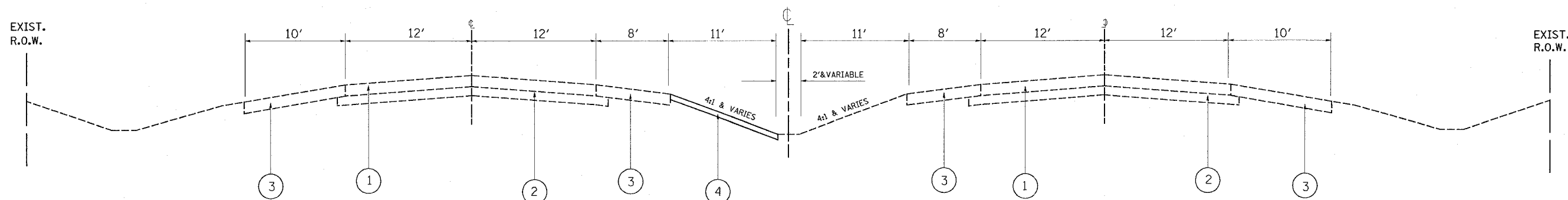
ILLINOIS DEPARTMENT OF TRANSPORTATION

**INTERSTATE 80  
SCHEDULE OF QUANTITIES**

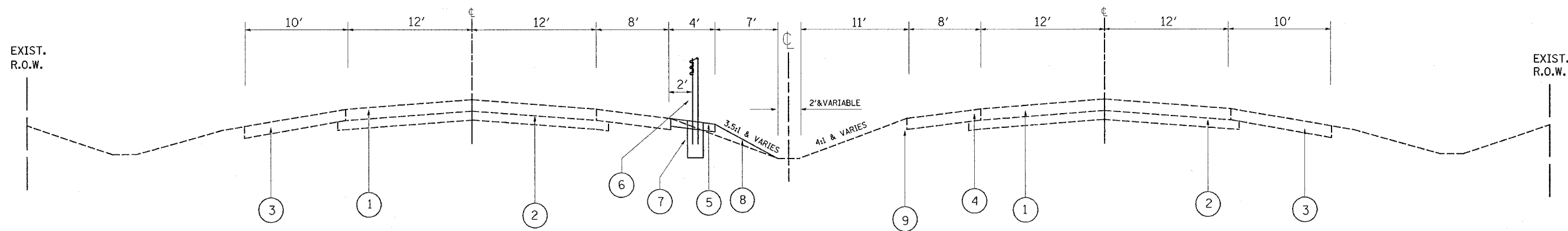
SCALE: VERT. : NONE  
HORIZ. :  
DATE

DRAWN BY: HMO  
CHECKED BY:

F.A.I. RTE.	SECTION	COUNTY	TOTAL SHEETS	SHEET NO.
80	99-1-I-3	WILL	34	5
STA.		TO STA.		
FED. ROAD DIST. NO. 1		ILLINOIS	FED. AID PROJECT	
CONTRACT 60A42				



I-80  
EXISTING TYPICAL CROSS SECTION  
STA 1761+00 TO STA 1880+00



I-80  
PROPOSED TYPICAL CROSS SECTION  
STA 1761+00 TO STA 1880+00

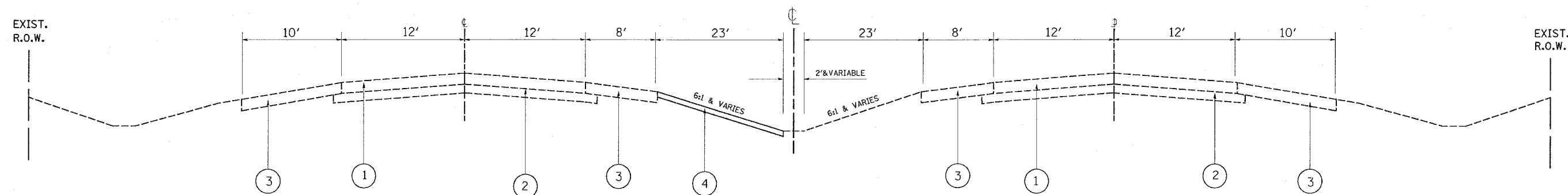
**LEGEND**

- ① EXISTING 10" P.C.C. PAVEMENT
- ② EXISTING SUBBASE GRANULAR MATERIAL; TYPE A
- ③ EXISTING BIT. SHOULDER
- ④ REMOVAL AND DISPOSAL OF UNSUITABLE MATERIAL
- ⑤ PROPOSED BITUMINOUS SHOULDER, SUPERPAVE 4"
- ⑥ PROPOSED HIGH TENSION CABLE MEDIAN BARRIER SYSTEM
- ⑦ PROPOSED CONCRETE FOUNDATION - INCLUDED IN THE COST OF THE HIGH TENSION CABLE MEDIAN BARRIER SYSTEM
- ⑧ PROPOSED SEEDING CLASS 2A AND TOPSOIL PLACEMENT 4"

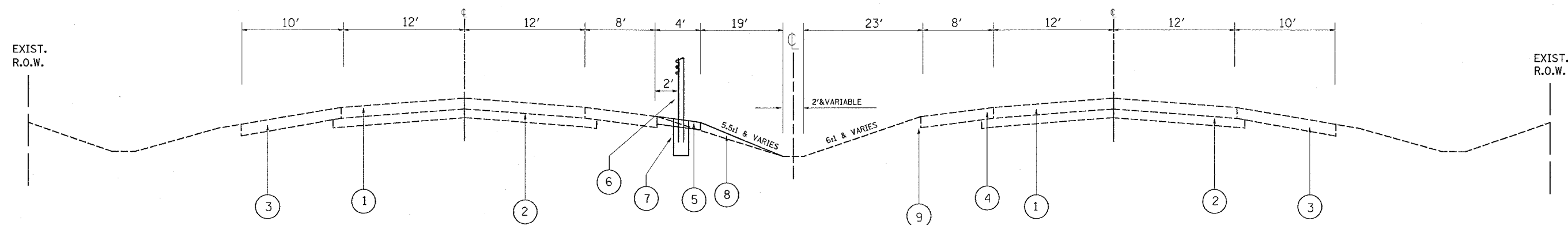
REVISIONS	
NAME	DATE

ILLINOIS DEPARTMENT OF TRANSPORTATION  
**INTERSTATE 80**  
**EXISTING AND PROPOSED TYPICAL SECTION**  
SCALE : NONE  
3/8/2006  
DRAWN BY: HMO  
CHECKED BY:

F.A.I. RTE.	SECTION	COUNTY	TOTAL SHEETS	SHEET NO.
80	99-1-I-3	WILL	34	6
STA.		TO STA.		
FED. ROAD DIST. NO. 1		ILLINOIS	FED. AID PROJECT	
CONTRACT 60A42				



I-80  
EXISTING TYPICAL CROSS SECTION  
STA 1761+00 TO STA 1880+00



I-80  
PROPOSED TYPICAL CROSS SECTION  
STA 1880+50 TO STA 1942+00

**LEGEND**

- ① EXISTING 10" P.C.C. PAVEMENT
- ② EXISTING SUBBASE GRANULAR MATERIAL; TYPE A
- ③ EXISTING BIT. SHOULDER
- ④ EXISTING GRAVEL SHOULDER
- ⑤ EXISTING GROUND DITCH
- ⑥ PROPOSED HIGH TENSION CABLE MEDIAN BARRIER SYSTEM
- ⑦ PROPOSED CONCRETE FOUNDATION - INCLUDED IN THE COST OF THE HIGH TENSION CABLE MEDIAN BARRIER SYSTEM
- ⑧ PROPOSED FURNISHED EXCAVATION
- ⑨ PROPOSED AGGREGATE SHOULDER, TYPE B
- ⑩ REMOVAL AND DESPOSAL OF UNSUITABLE METERIAL

REVISIONS	
NAME	DATE

ILLINOIS DEPARTMENT OF TRANSPORTATION  
**INTERSTATE 80**  
**EXISTING AND PROPOSED**  
**TYPICAL SECTION**

SCALE : NONE  
3/8/2006

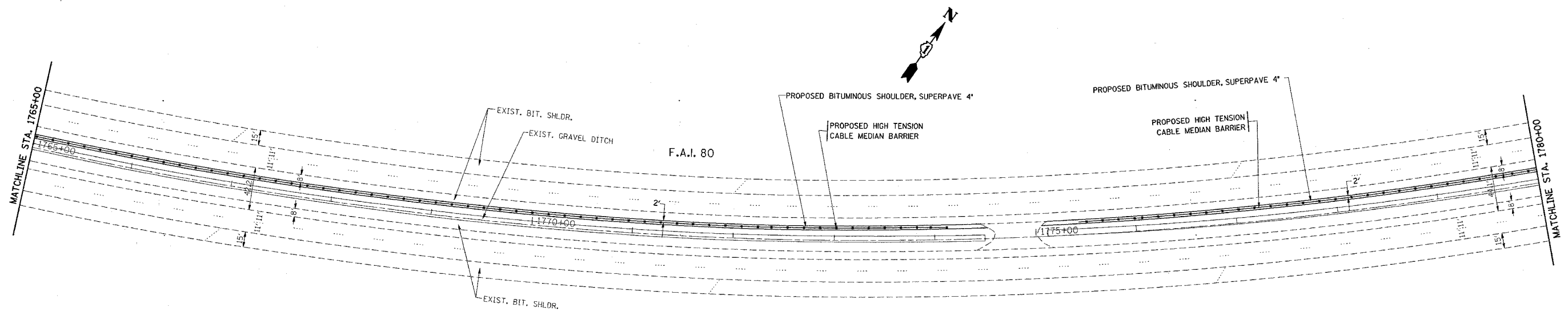
DRAWN BY: HMO  
CHECKED BY:



REF-top02

CONTRACT NO. 60A42

F.A.I. RTE.	SECTION	COUNTY	TOTAL SHEETS	SHEET NO.
80	99-1-1-3	WILL	34	8
STA. 1765+00		TO STA. 1780+00		
FED. ROAD DIST. NO.		ILLINOIS	FED. AID PROJECT	



EXIST. CURVE E.I80-1  
 PI STA. = 1772+96.74  
 $\Delta = 48^\circ 11' 22''$  (LT)  
 $D = 1^\circ 30' 20''$   
 $R = 3,805.61'$   
 $T = 1,701.91'$   
 $L = 3,200.77'$   
 $E = 363.22'$   
 $e = \text{-----}$   
 $T.R. = \text{-----}$   
 $S.E. RUN = \text{-----}$   
 $P.C. STA. = 1755+94.83$   
 $P.T. STA. = 1787+95.60$

DATE = 3/9/2006  
 PLOT SCALE = 50.0000 / IN.  
 USER NAME = jlr-ohhd

REVISIONS	
NAME	DATE

ILLINOIS DEPARTMENT OF TRANSPORTATION  
 ROADWAY PLAN  
 I-80  
 GRUNDY COUNTY LINE TO I-55

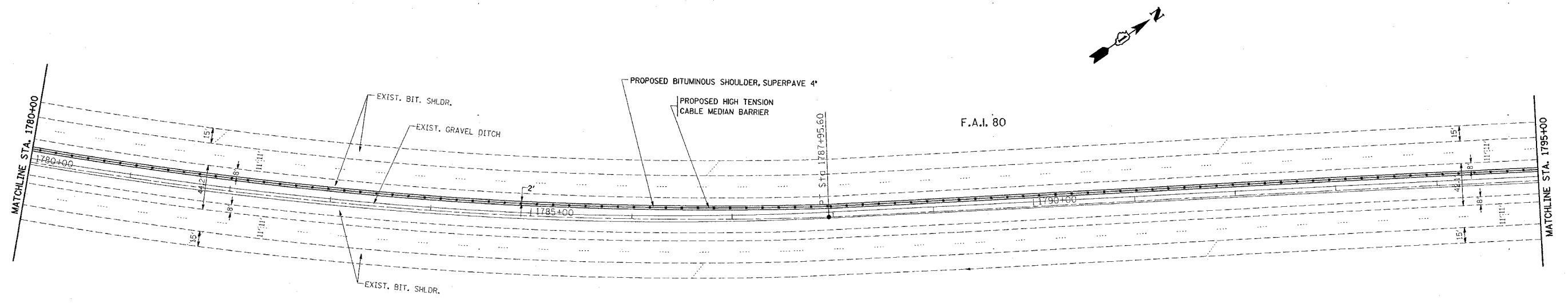
SCALE: VERT. 1"=50'  
 HORIZ. 1"=50'  
 DATE 3/9/2006  
 DRAWN BY  
 CHECKED BY



\*REF-top003

CONTRACT NO. 60A42

F.A.I. RTE.	SECTION	COUNTY	TOTAL SHEETS	SHEET NO.
80	99-1-I-3	WILL	34	9
STA. 1780+00		TO STA. 1795+00		
FED. ROAD DIST. NO.		ILLINOIS	FED. AID PROJECT	



PLOT DATE = 3/9/2006  
 FILE NAME = c:\p\j\eta\eta\105286\wt\_rdy.dgn  
 PLOT SCALE = 50.0000' / IN.  
 USER NAME = graham

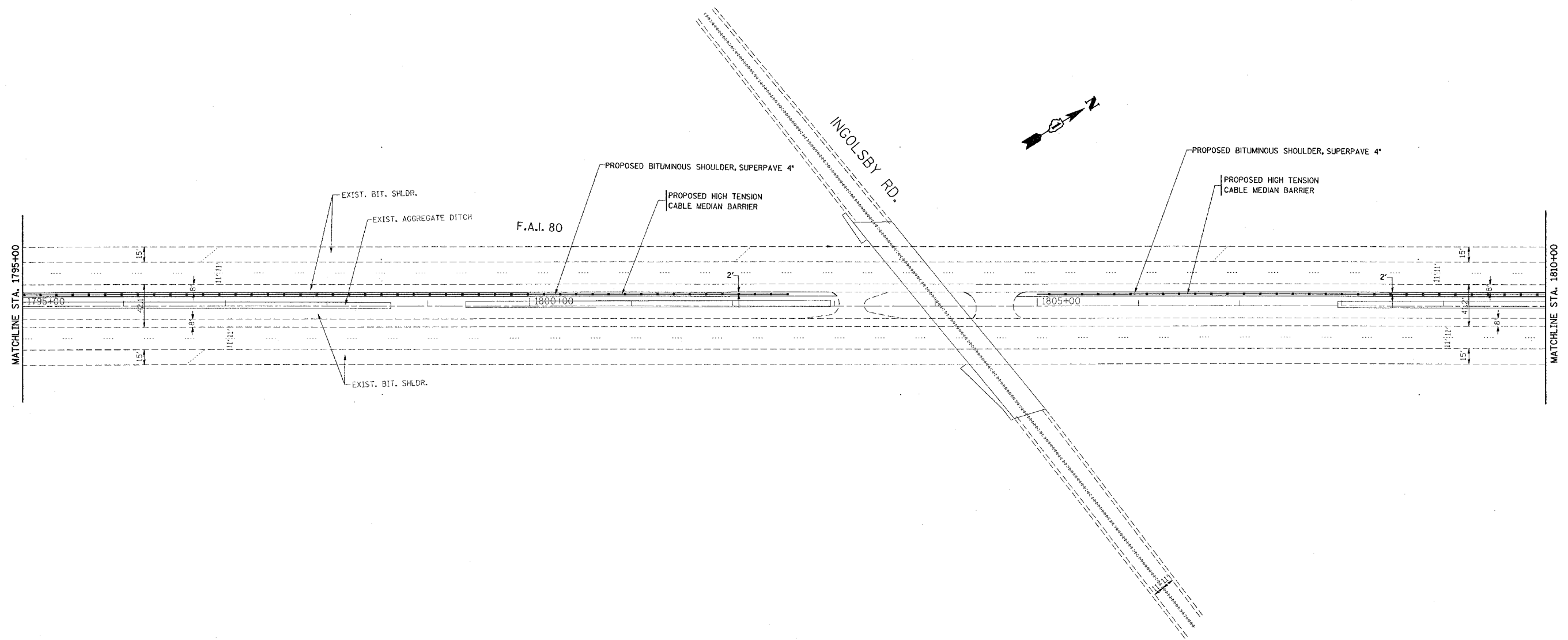
REVISIONS	
NAME	DATE

ILLINOIS DEPARTMENT OF TRANSPORTATION  
  
**ROADWAY PLAN**  
**I-80**  
**GRUNDY COUNTY LINE TO I-55**  
  
 SCALE: VERT. 1"=50'  
 HORIZ. 1"=50'  
 DATE 3/9/2006  
  
 DRAWN BY  
 CHECKED BY

\*REF-top004

CONTRACT NO. 60A42

F.A.I. RTE.	SECTION	COUNTY	TOTAL SHEETS	SHEET NO.
80	99-1-I-3	WILL	34	10
STA. 1795+00 TO STA. 1810+00				
FED. ROAD DIST. NO.			ILLINOIS FED. AID PROJECT	



PLOT DATE = 3/9/2006  
 FILE NAME = c:\p06\proj\1002285\wt\_rdw.dgn  
 PLOT SCALE = 1/4"=50'  
 USER NAME = gtrading

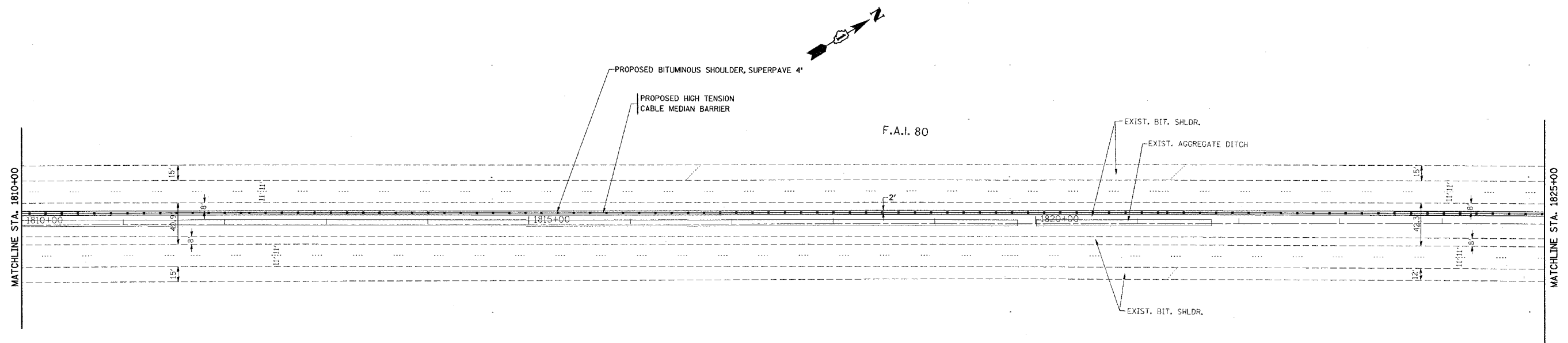
REVISIONS	
NAME	DATE

ILLINOIS DEPARTMENT OF TRANSPORTATION  
 ROADWAY PLAN  
 I-80  
 GRUNDY COUNTY LINE TO I-55  
 SCALE: VERT. 1"=50'  
 HORIZ.  
 DATE 3/9/2006  
 DRAWN BY  
 CHECKED BY

\*REF-100005

CONTRACT NO. 60A42

F.A.I. RTE.	SECTION	COUNTY	TOTAL SHEETS	SHEET NO.
80	99-1-I-3	WILL	34	11
STA. 1810+00		TO STA. 1825+00		
FED. ROAD DIST. NO.		ILLINOIS	FED. AID PROJECT	

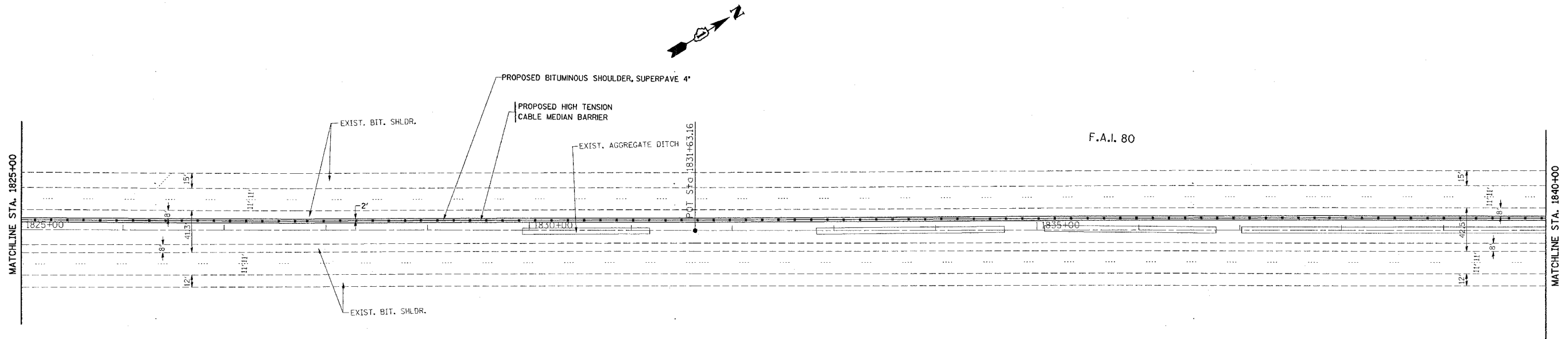


PLOT DATE = 3/9/2006  
 FILE NAME = c:\p\proj\sta\d082285\wt\_rday.dgn  
 PLOT SCALE = 50.0000' / IN.  
 USER NAME = jbracke

REVISIONS	
NAME	DATE

ILLINOIS DEPARTMENT OF TRANSPORTATION  
 ROADWAY PLAN  
 I-80  
 GRUNDY COUNTY LINE TO I-55  
 SCALE: VERT. 1"=50'  
 HORIZ.  
 DATE 3/9/2006  
 DRAWN BY  
 CHECKED BY

F.A.I. RTE.	SECTION	COUNTY	TOTAL SHEETS	SHEET NO.
80	99-1-I-3	WILL	34	12
STA. 1825+00		TO STA. 1840+00		
FED. ROAD DIST. NO.		ILLINOIS	FED. AID PROJECT	



PLOT DATE = 3/9/2006  
 FILE NAME = s:\projects\1825-1840\1825-1840.dgn  
 PLOT SCALE = 50.0000' / IN.  
 USER NAME = ulr-hhkd

REVISIONS	
NAME	DATE

ILLINOIS DEPARTMENT OF TRANSPORTATION

ROADWAY PLAN  
 I-80  
 GRUNDY COUNTY LINE TO I-55

SCALE: VERT. 1"=50'  
 HORIZ. 1"=50'

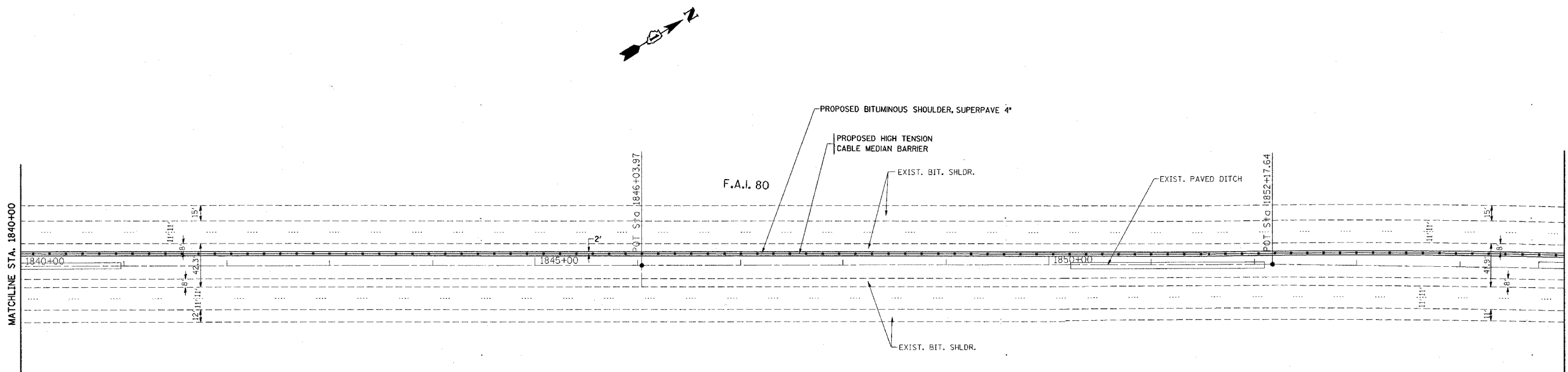
DATE 3/9/2006

DRAWN BY  
 CHECKED BY

\*REF-top007

CONTRACT NO. 60A42

F.A.I. RTE.	SECTION	COUNTY	TOTAL SHEETS	SHEET NO.
80	99-1-I-3	WILL	34	13
STA. 1840+00		TO STA. 1855+00		
FED. ROAD DIST. NO.		ILLINOIS	FED. AID PROJECT	



PLOT DATE = 3/9/2006  
 PLOT SCALE = 50.0000 / IN.  
 USER NAME = jfr-ghkd

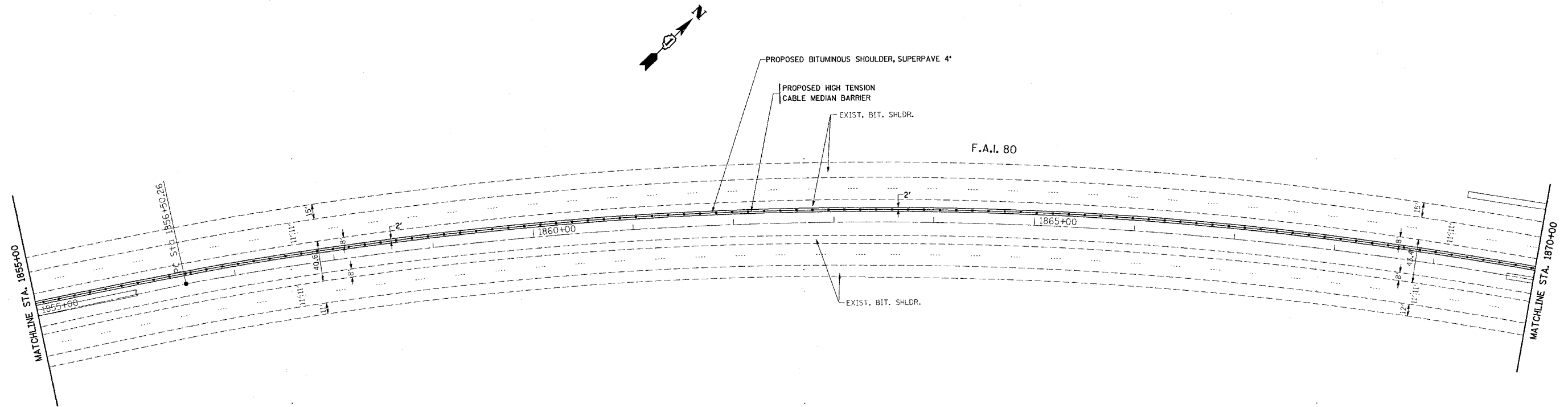
REVISIONS	
NAME	DATE

ILLINOIS DEPARTMENT OF TRANSPORTATION  
  
**ROADWAY PLAN**  
**I-80**  
**GRUNDY COUNTY LINE TO I-55**  
  
 SCALE: VERT. 1"=50'  
 HORIZ. 1"=50'  
 DATE 3/9/2006  
  
 DRAWN BY  
 CHECKED BY

REF-10p008

CONTRACT NO. 60A42

F.A.I. RTE.	SECTION	COUNTY	TOTAL SHEETS	SHEET NO.
80	99-1-I-3	WILL.	34	14
STA. 1855+00		TO STA. 1870+00		
FED. ROAD DIST. NO.	ILLINOIS	FED. AID PROJECT		

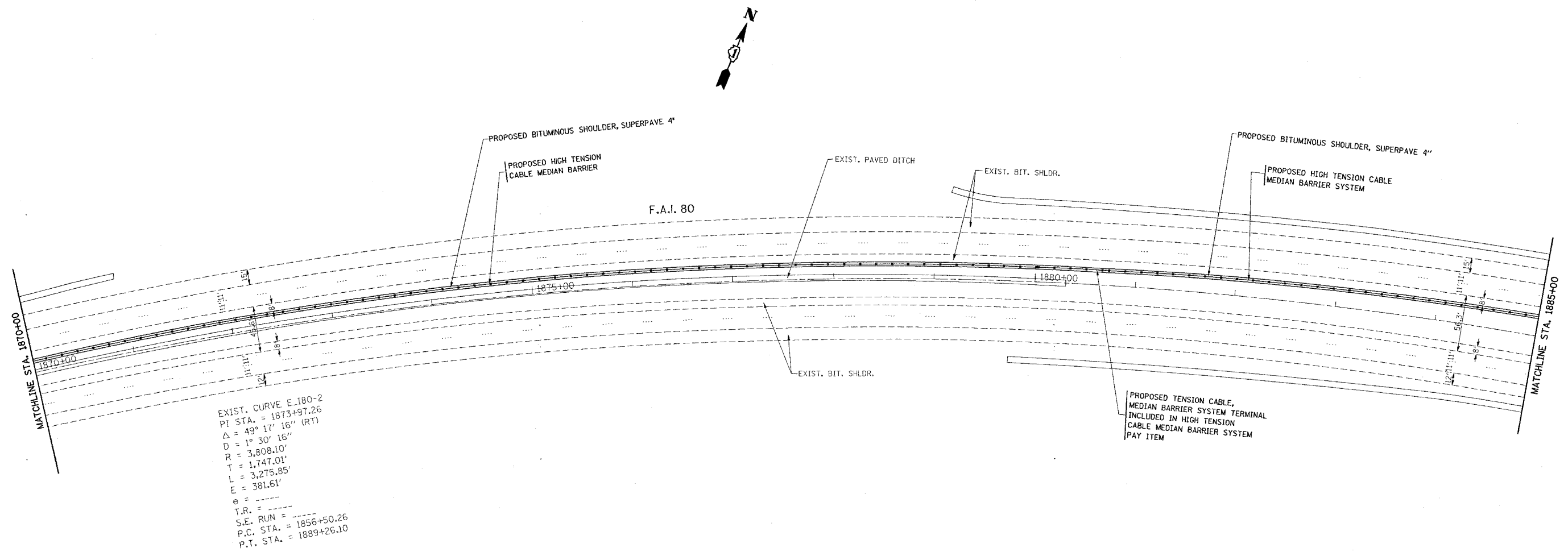


PLOT DATE = 3/9/2006  
 FILE NAME = c:\p\m\m\m\1855206\1855206.dgn  
 PLOT SCALE = 1/4" = 1' / IN.  
 USER NAME = jst

REVISIONS	
NAME	DATE

ILLINOIS DEPARTMENT OF TRANSPORTATION  
 ROADWAY PLAN  
 I-80  
 GRUNDY COUNTY LINE TO I-55  
 SCALE: VERT. 1"=50'  
 HORIZ. 1"=50'  
 DATE 3/9/2006  
 DRAWN BY  
 CHECKED BY

F.A.I. RTE.	SECTION	COUNTY	TOTAL SHEETS	SHEET NO.
80	99-1-I-3	WILL	34	15
STA. 1870+00		TO STA. 1885+00		
FED. ROAD DIST. NO.		ILLINOIS	FED. AID PROJECT	



EXIST. CURVE E-180-2  
 PI STA. = 1873+97.26  
 $\Delta = 49^\circ 17' 16''$  (RT)  
 $D = 1^\circ 30' 16''$   
 $R = 3,808.10'$   
 $T = 1,747.01'$   
 $L = 3,275.85'$   
 $E = 381.61'$   
 $\theta = \dots$   
 $T.R. = \dots$   
 $S.E. RUN = 1856+50.26$   
 $P.C. STA. = 1889+26.10$   
 $P.T. STA. = 1889+26.10$

PLOT DATE = 3/9/2006  
 PLOT SCALE = 50.0000 / IN.  
 USER NAME = ulr-ahkd

REVISIONS	
NAME	DATE

ILLINOIS DEPARTMENT OF TRANSPORTATION

ROADWAY PLAN  
 I-80  
 GRUNDY COUNTY LINE TO I-55

SCALE: VERT. 1"=50'  
 HORIZ. 1"=50'

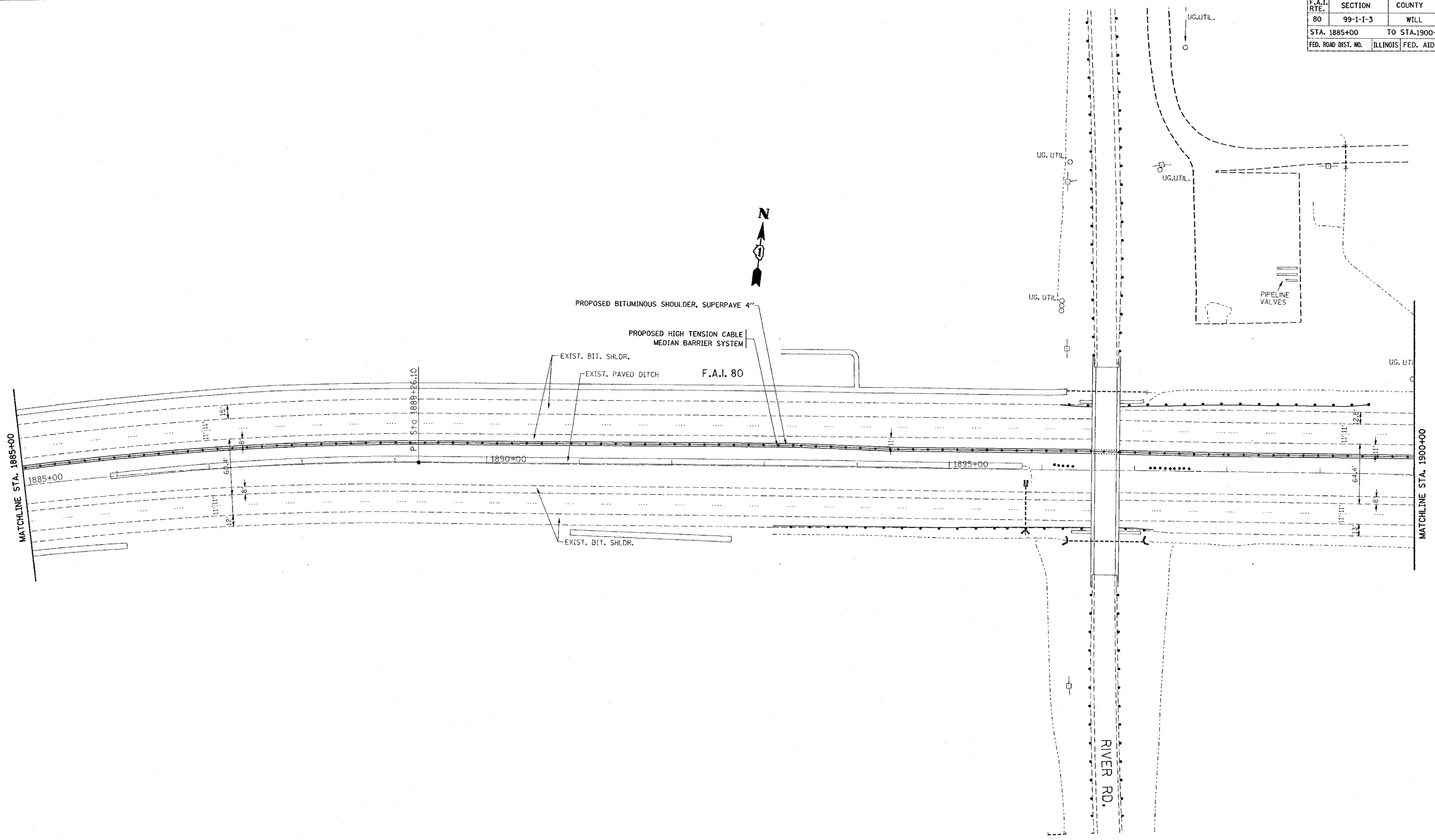
DATE 3/9/2006

DRAWN BY  
 CHECKED BY

\*REF-topo0

CONTRACT NO. 60A42

F.A.I. RTE.	SECTION	COUNTY	TOTAL SHEETS	SHEET NO.
80	99-1-I-3	WILL	34	16
STA. 1885+00		TO STA. 1900+00		
FED. ROAD DIST. NO.		ILLINOIS	FED. AID PROJECT	



PLOT DATE = 3/9/2006  
 FILE NAME = c:\p06099\99-1-I-3\160528b\ant\_rdy.dgn  
 USER NAME = jlr/ahhd

REVISIONS	
NAME	DATE

ILLINOIS DEPARTMENT OF TRANSPORTATION

ROADWAY PLAN  
 I-80  
 GRUNDY COUNTY LINE TO I-55

SCALE: VERT. 1"=50'  
 HORIZ. 1"=50'

DATE 3/9/2006

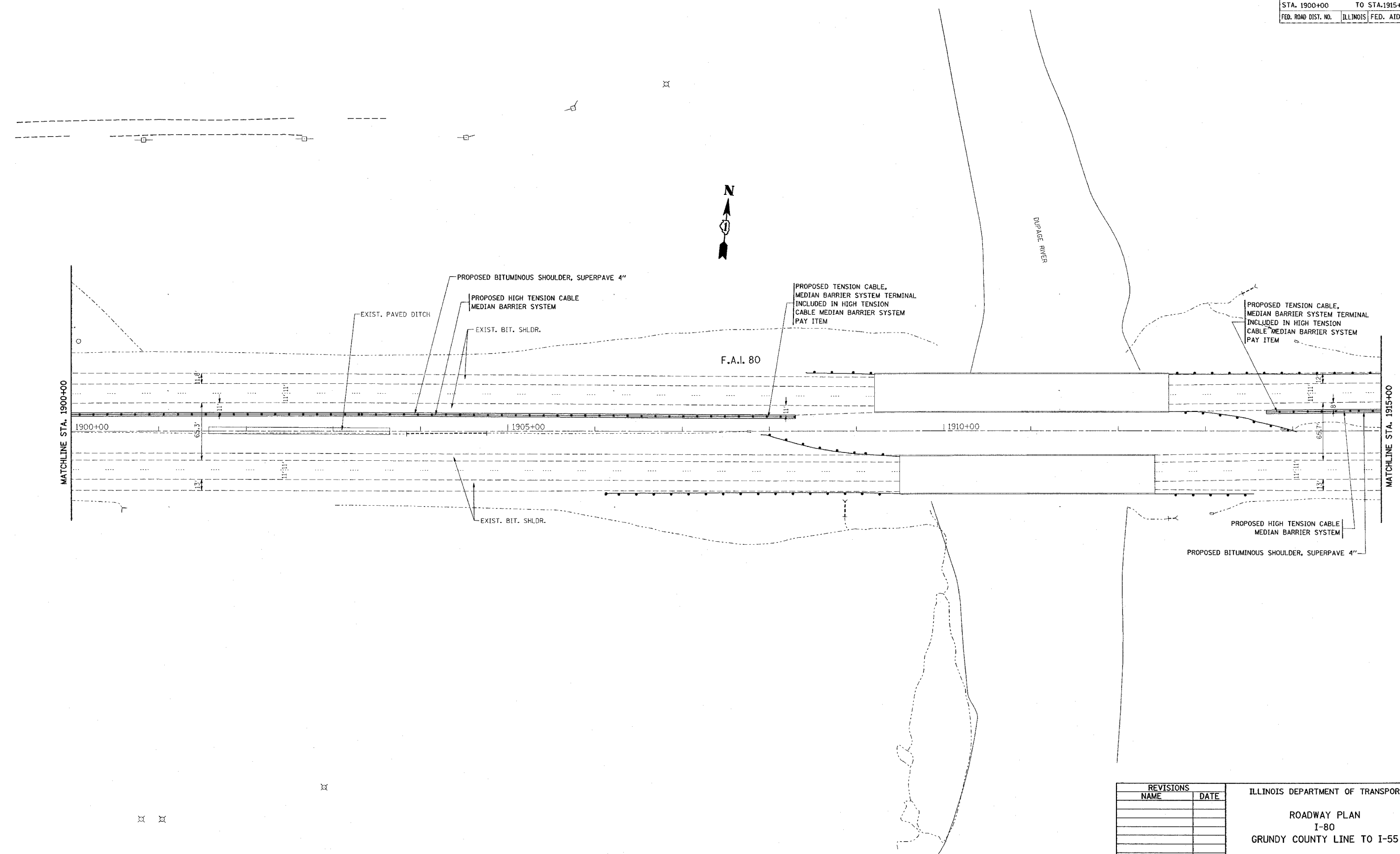
DRAWN BY  
 CHECKED BY



REF-100d1

CONTRACT NO. 60A42

F.A.I. RTE.	SECTION	COUNTY	TOTAL SHEETS	SHEET NO.
80	99-1-I-3	WILL	34	17
STA. 1900+00		TO STA. 1915+00		
FED. ROAD DIST. NO.		ILLINOIS	FED. AID PROJECT	



PLOT DATE = 3/9/2006  
 FILE NAME = \\s:\projects\1005206\1005206.dgn  
 PLOT SCALE = 50.0000 / IN.  
 USER NAME = uj-rchhd

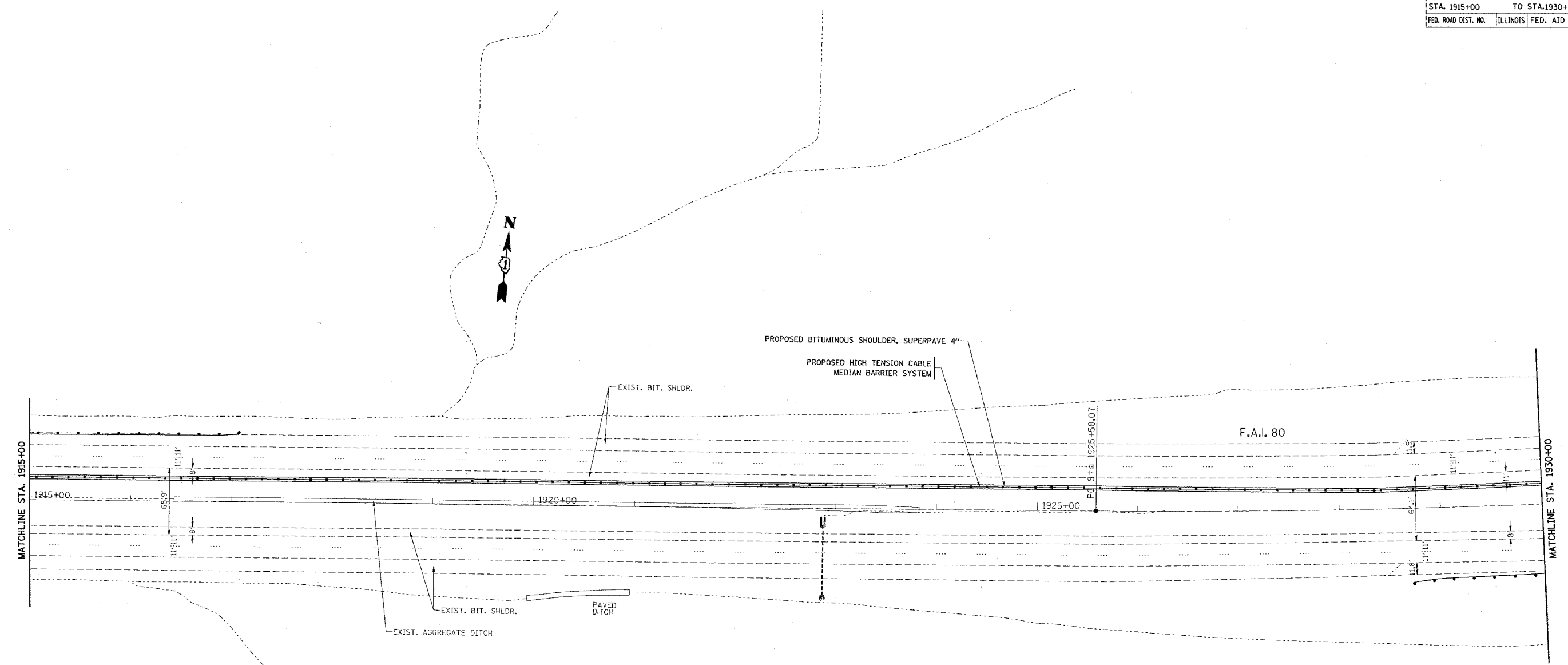
REVISIONS	
NAME	DATE

ILLINOIS DEPARTMENT OF TRANSPORTATION  
  
**ROADWAY PLAN**  
**I-80**  
**GRUNDY COUNTY LINE TO I-55**  
  
 SCALE: VERT. 1"=50'  
 HORIZ. 1"=50'  
 DATE 3/9/2006  
  
 DRAWN BY  
 CHECKED BY

\*REF-topol2

CONTRACT NO. 60A42

F.A.I. RTE.	SECTION	COUNTY	TOTAL SHEETS	SHEET NO.
80	99-1-I-3	WILL	34	18
STA. 1915+00		TO STA. 1930+00		
FED. ROAD DIST. NO.		ILLINOIS FED. AID PROJECT		



EXIST. CURVE E\_180-3  
 PI STA. = 1928+62.77  
 $\Delta = 3^\circ 55' 03''$  (LT)  
 $D = 0^\circ 38' 35''$   
 $R = 8,909.49'$   
 $T = 304.70'$   
 $L = 609.16'$   
 $E = 5.21'$   
 $e = \text{-----}$   
 $T.R. = \text{-----}$   
 $S.E.O.RUN = 0. \text{-----}$   
 $P.C. STA. = 1925+58.07$   
 $P.T. STA. = 1931+67.23$

REVISIONS	
NAME	DATE

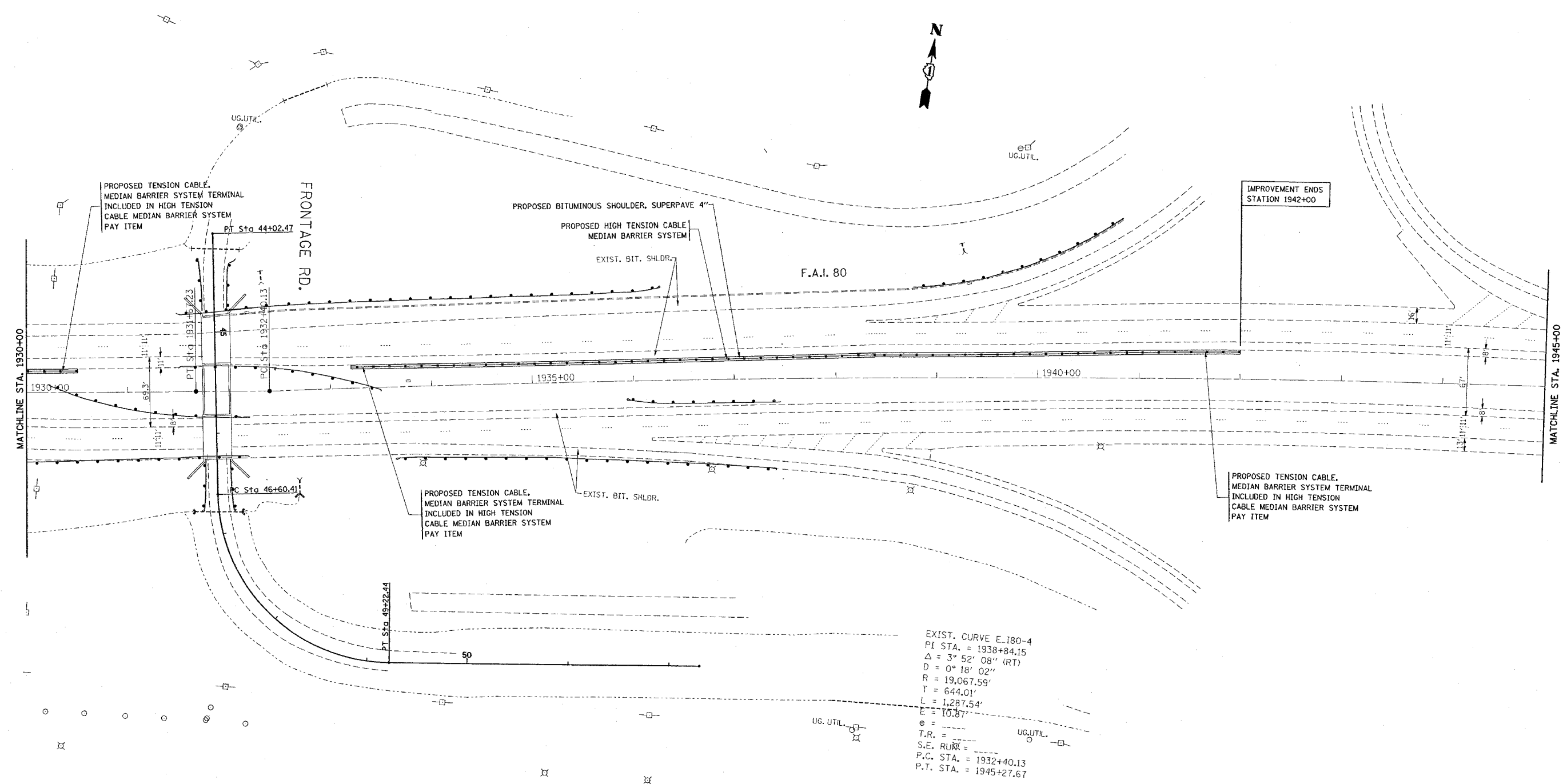
ILLINOIS DEPARTMENT OF TRANSPORTATION  
 ROADWAY PLAN  
 I-80  
 GRUNDY COUNTY LINE TO I-55  
 SCALE: VERT. 1"=50'  
 HORIZ. DATE 3/9/2006  
 DRAWN BY  
 CHECKED BY

PLOT DATE = 3/9/2006  
 FILE NAME = c:\projects\100206\100206\_vh\_rdw.dgn  
 USER = jgarcia

\*REF-topol3

CONTRACT NO. 60A42

F.A.I. RTE.	SECTION	COUNTY	TOTAL SHEETS	SHEET NO.
80	99-1-1-3	WILL	34	19
STA. 1930+00		TO STA. 1945+00		
FED. ROAD DIST. NO.		ILLINOIS FED. AID PROJECT		



EXIST. CURVE E. I80-4  
 PI STA. = 1938+84.15  
 $\Delta = 3^\circ 52' 08''$  (RT)  
 $D = 0^\circ 18' 02''$   
 $R = 19,067.59'$   
 $T = 644.01'$   
 $L = 1,287.54'$   
 $E = 10.87'$   
 $e =$   
 $T.R. =$   
 $S.E. CURV =$   
 $P.C. STA. = 1932+40.13$   
 $P.T. STA. = 1945+27.67$

REVISIONS	
NAME	DATE

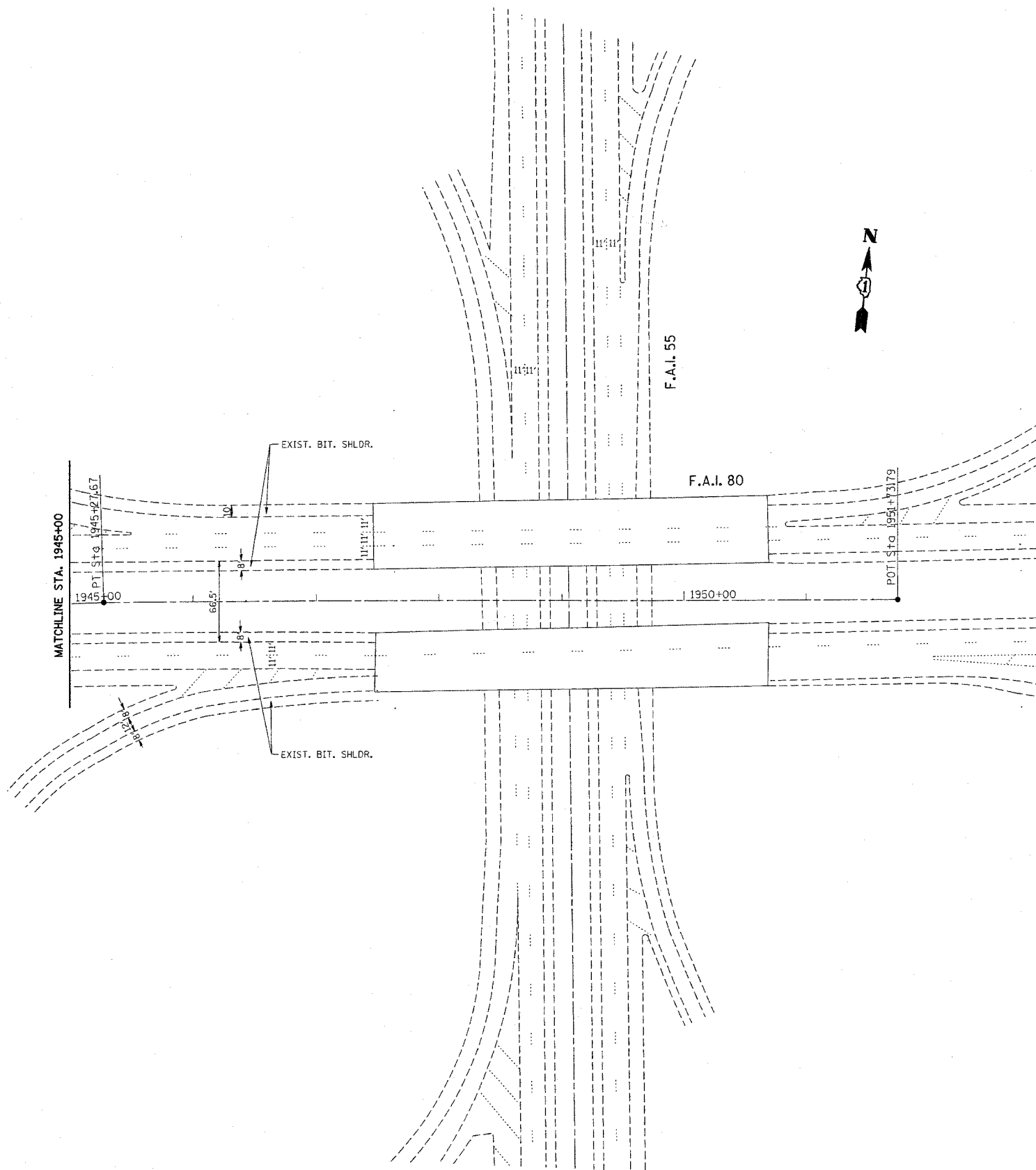
ILLINOIS DEPARTMENT OF TRANSPORTATION  
 ROADWAY PLAN  
 I-80  
 GRUNDY COUNTY LINE TO I-55  
 SCALE: VERT. 1"=50'  
 HORIZ. 1"=50'  
 DATE 3/9/2006  
 DRAWN BY  
 CHECKED BY

PLOT DATE = 3/9/2006  
 USER NAME = dbruhnd

topol4

CONTRACT NO. 60A42

F.A.I. RTE.	SECTION	COUNTY	TOTAL SHEETS	SHEET NO.
80	99-1-1-3	WILL	34	20
STA. 1945+00		TO STA. 1951+73.79		
FED. ROAD DIST. NO.	ILLINOIS	FED. AID PROJECT		



PLOT DATE = 2/7/2006  
 FILE NAME = c:\projects\j05236\shl\_rdw.dgn  
 PLOT SCALE = 50.0000 / IN.  
 USER NAME = gstrand

REVISIONS	
NAME	DATE

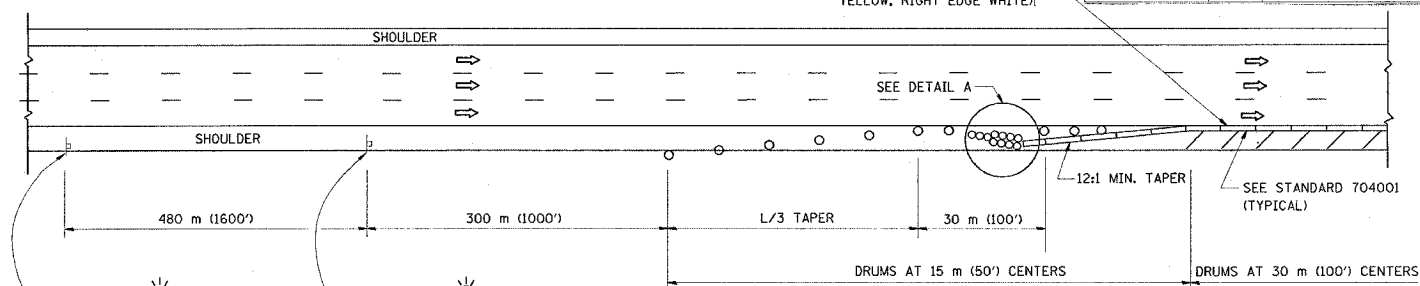
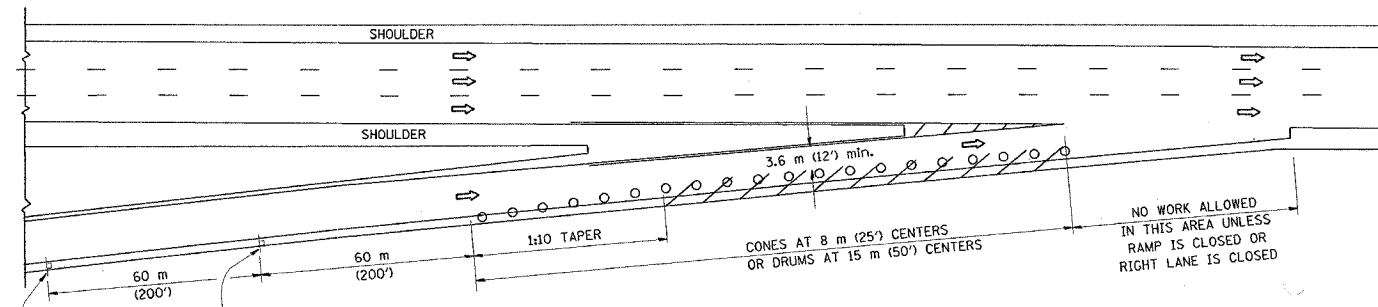
ILLINOIS DEPARTMENT OF TRANSPORTATION  
 ROADWAY PLAN  
 I-80  
 GRUNDY COUNTY LINE TO I-55  
 SCALE: VERT. 1"=50'  
 HORIZ. 1"=50'  
 DATE 2/7/2006  
 DRAWN BY  
 CHECKED BY

F.A.I. RTE.	SECTION	COUNTY	TOTAL SHEETS	SHEET NO.
80	99-1-1-3	WILL	34	21
STA. TO STA.		FED. ROAD DIST. NO. 1 ILLINOIS FED. AID PROJECT		

### PARTIAL RAMP CLOSURE DETAILS

### SHOULDER CLOSURE DETAILS

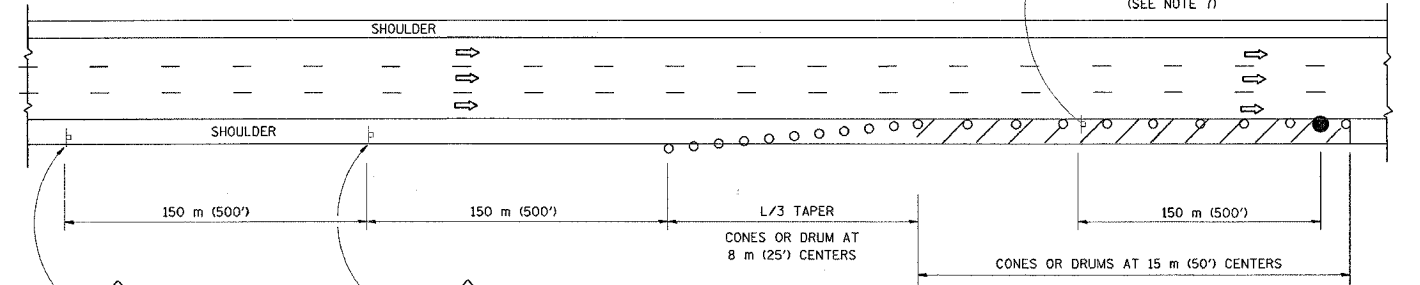
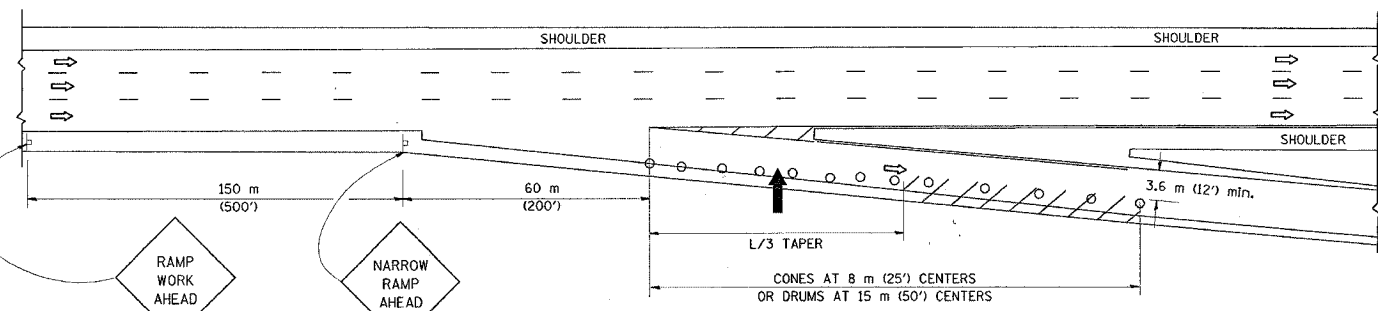
REFLECTIVE 150 (6) EDGE LINE ON LOWER SLOPE OF WALL (LEFT EDGE YELLOW, RIGHT EDGE WHITE)



TYPICAL ENTRANCE RAMP

PERMANENT SHOULDER CLOSURE

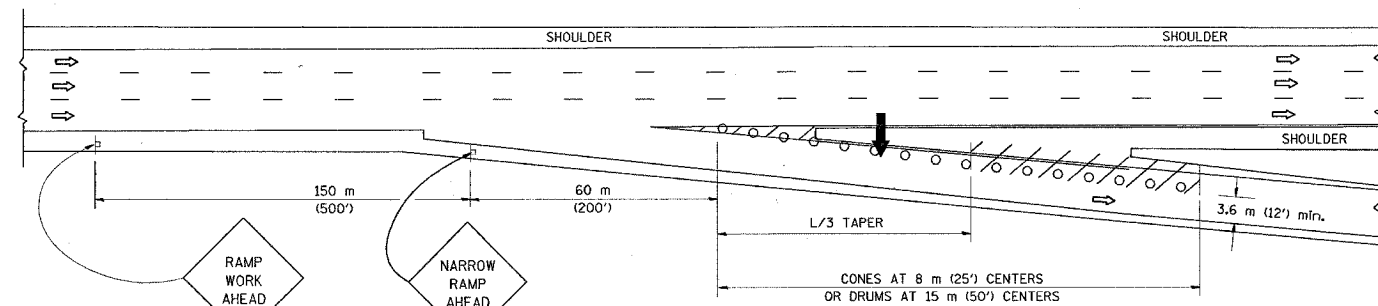
OR WHEN SPECIFIED INSTALL TEMPORARY CONCRETE BARRIER WALL WITH BARRIER WALL REFLECTORS PER STANDARD 701402, DETAIL A.



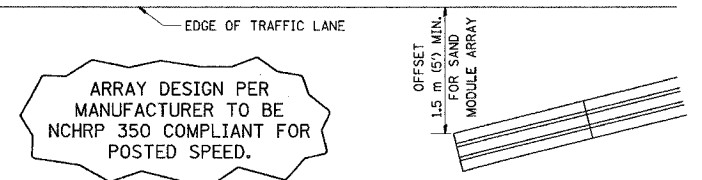
TYPICAL EXIT RAMP

DAYTIME SHOULDER CLOSURE

THIS DETAIL IS USED WHERE:  
 1. VEHICLES, EQUIPMENT, WORKERS OR THEIR ACTIVITIES ENCROACH IN AN AREA CLOSER THAN 4.5 m (15') TO THE EDGE OF PAVEMENT FOR A PERIOD IN EXCESS OF 15 MINUTES.



TYPICAL EXIT RAMP



DETAIL "A"  
 IMPACT ATTENUATOR, TEMPORARY  
 (SEE NOTE 5)

**SYMBOLS**

- ARROWBOARD
- WORK AREA
- SIGN ON PORTABLE OR PERMANENT SUPPORT
- FLAGGER WITH CONTROL SIGN
- DRUM WITH MONO-DIRECTIONAL STEADY BURNING LIGHT
- CONES - 700 (28) IN HEIGHT

**GENERAL NOTES**

1. THE "L" DISTANCE EQUALS:  
 SPEED LIMIT      FORMULAS  
 80 km/h (45 mph)      METRIC      ENGLISH  
 OR GREATER:      L=0.65(W)(S)      L=(W)(S)  
 W = WIDTH OF OFFSET IN METERS (FEET)  
 S = NORMAL POSTED SPEED KM/H (MPH)
2. PLASTIC DRUMS WITH HIGH PERFORMANCE REFLECTIVE SHEETING AND STEADY BURNING LIGHTS ARE REQUIRED FOR ALL NIGHTTIME CLOSURES.
3. ALL SIGNS SHALL BE POST MOUNTED IF THE CLOSURE TIME EXCEEDS FOUR DAYS.
4. FLASHING LIGHTS SHALL BE USED DURING THE HOURS OF DARKNESS AND SHALL BE INSTALLED ABOVE THE FIRST TWO SETS OF SIGNS.

5. THE IMPACT ATTENUATOR, TEMPORARY IS NOT REQUIRED WHEN THE TEMPORARY CONCRETE BARRIER WALL IS OUTSIDE THE CLEAR ZONE OR IS TIED INTO THE EXISTING GUARDRAIL. IF OFFSET IS LESS THAN 5 FEET USE "TRAFFIC BARRIER TERMINAL, TYPE III, TEMPORARY" DEVICE TO MEET NCHRP350 FOR POSTED SPEED.
6. AUTHORIZATION FROM THE DISTRICT'S BUREAU OF TRAFFIC IS REQUIRED FOR ALL FREEWAY CLOSURES.
7. THE FLAGGER AND FLAGGER SIGN ARE REQUIRED AT THE ABOVE WORK SITES WHEN:
  - a. FOUR OR MORE WORK VEHICLES ENTER THE TRAFFIC LANES IN A ONE HOUR PERIOD.
  - b. THE WORK AVTIVITY REQUIRES FREQUENT ENCROACHMENT INTO THE LANE OPEN TO TRAFFIC.
 THE FLAGGER SHALL BE STATIONED APPROXIMATELY 30 m (100') TO 60 m (200') IN ADVANCE OF THE WORKERS.

ALL DIMENSIONS ARE IN MILLIMETERS (INCHES) UNLESS OTHERWISE SHOWN.

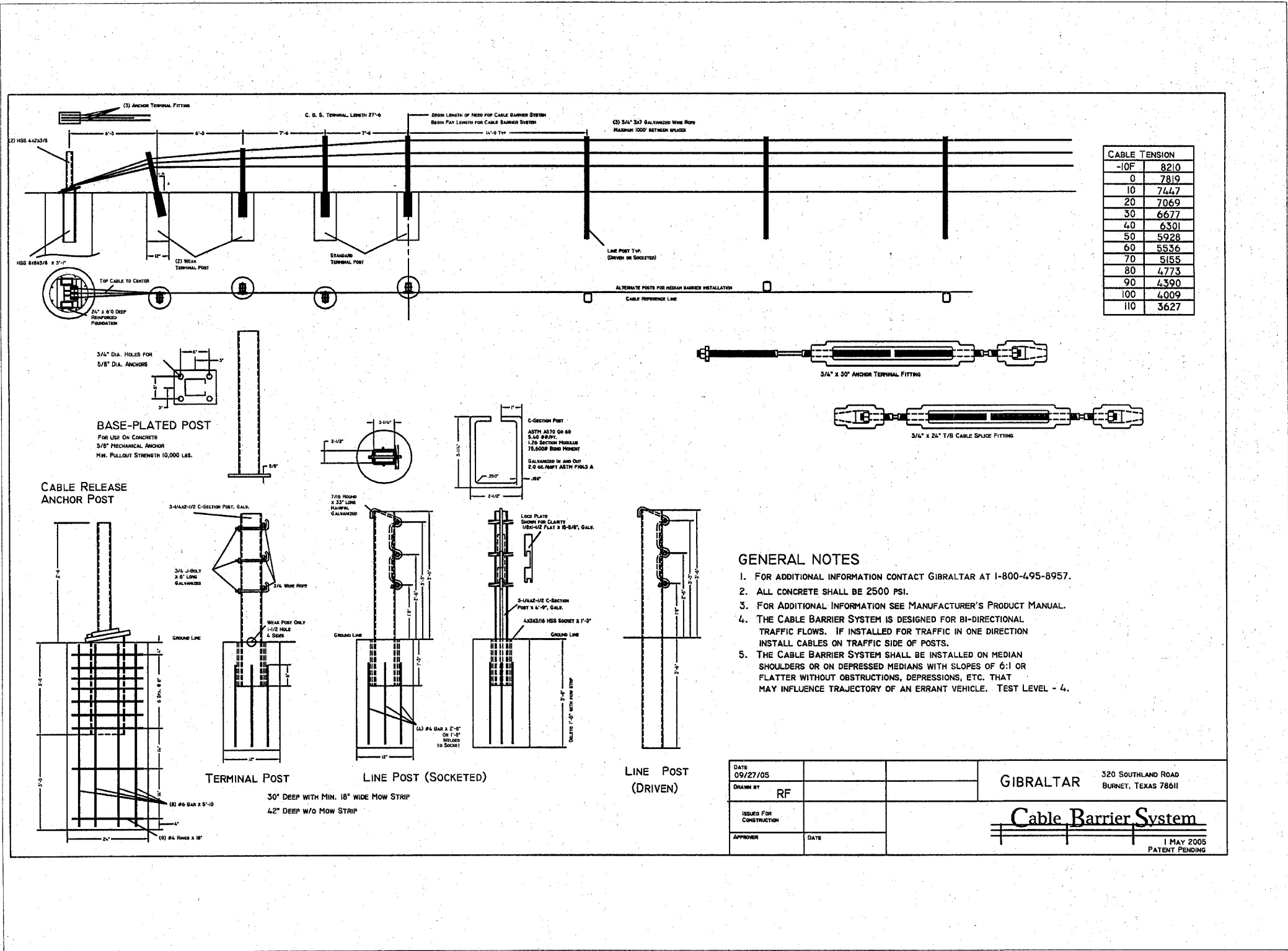
ILLINOIS DEPARTMENT OF TRANSPORTATION

**TRAFFIC CONTROL DETAILS  
 FOR FREEWAY  
 SHOULDER CLOSURES  
 PARTIAL RAMP CLOSURES**

REVISIONS	
NAME	DATE
DWS	11/96
JAF	12/02
NCHRP 350	04/03

SCALE: NONE  
 DATE: 2/10/2006  
 DRAWN BY: DWS  
 DESIGNED BY: DWS  
 CHECKED BY: TC-17

F.A.I. RTE.	SECTION	COUNTY	TOTAL SHEETS	SHEET NO.
80	99-1-I-3	WILL.	34	22
STA.		TO STA.		
FED. ROAD DIST. NO. 1		ILLINOIS FED. AID PROJECT		



DATE	09/27/05			GIBALTAR	320 SOUTHLAND ROAD BURNET, TEXAS 78611
DRAWN BY	RF			<b>Cable Barrier System</b>	
ISSUED FOR	CONSTRUCTION				
APPROVER		DATE		1 MAY 2005 PATENT PENDING	

REVISIONS	
NAME	DATE

ILLINOIS DEPARTMENT OF TRANSPORTATION

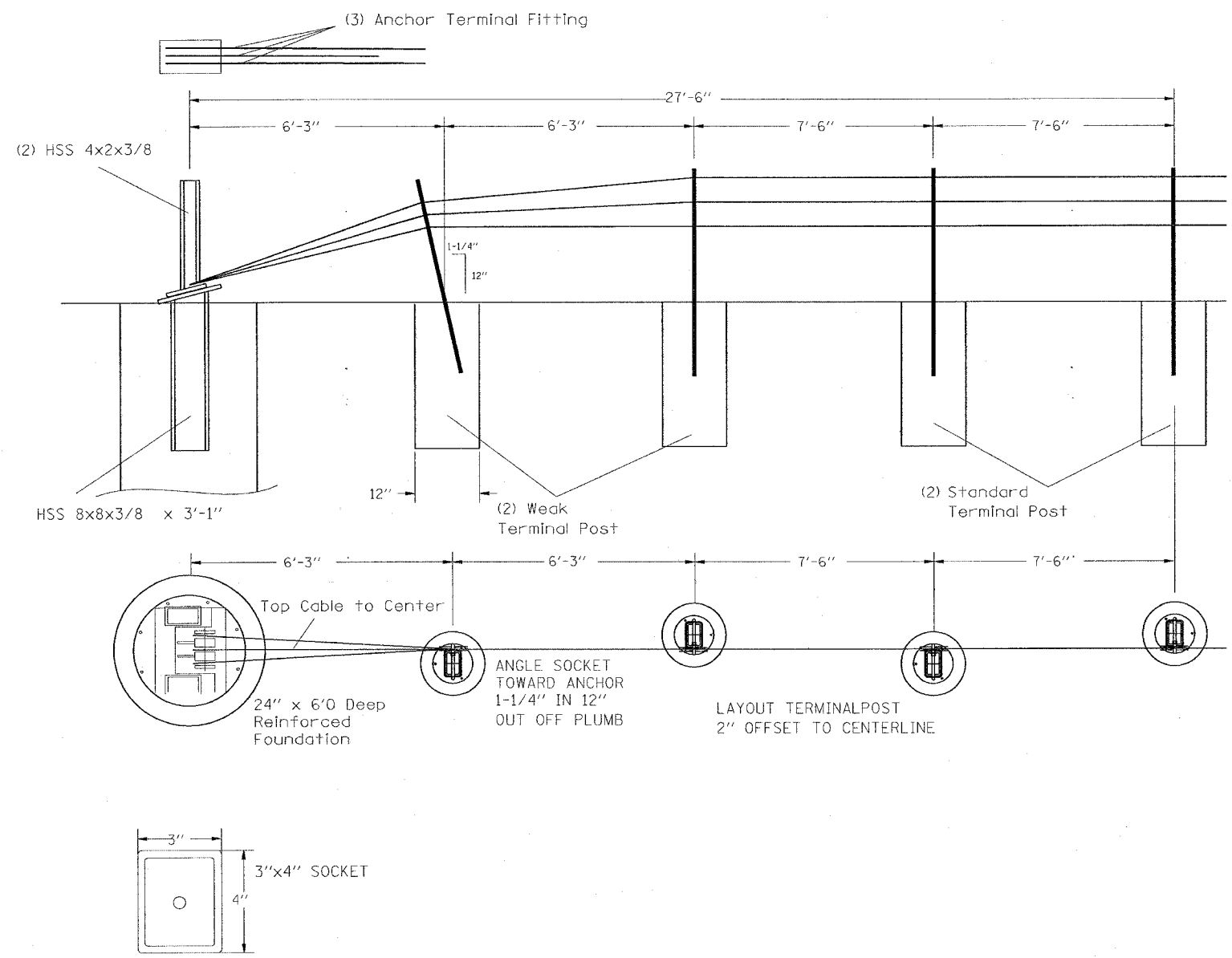
**INTERSTATE 80**

**PLAN DETAILS**

SCALE: NONE  
2/28/2006

DRAWN BY:  
CHECKED BY:

F.A.I. RTE.	SECTION	COUNTY	TOTAL SHEETS	SHEET NO.
80	99-1-1-3	WILL	34	23
STA.		TO STA.		
FED. ROAD DIST. NO.	ILLINOIS	FED. AID PROJECT		



PLOT DATE = 3/1/2006  
 FILE NAME = c:\pwork\mets\dms2006\detail.dgn  
 PLOT SCALE = 50.00000 / IN.  
 USER NAME = csmrhm

REVISIONS	
NAME	DATE

ILLINOIS DEPARTMENT OF TRANSPORTATION

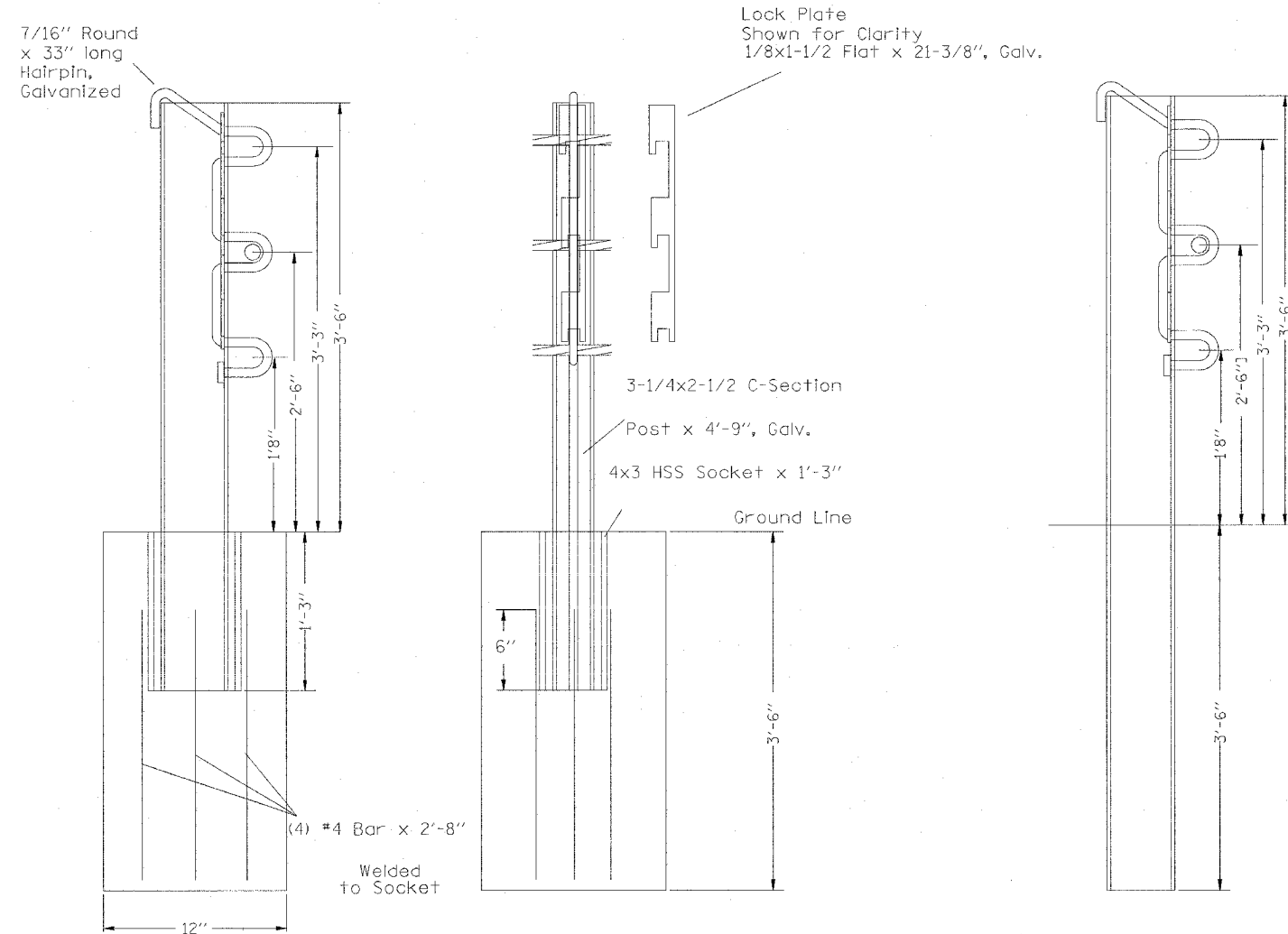
INTERSTATE 80

PLAN DETAILS

SCALE: VERT.  
 HORIZ.  
 DATE

DRAWN BY  
 CHECKED BY

F.A.L. RTE.	SECTION	COUNTY	TOTAL SHEETS	SHEET NO.
80	99-1-1-3	WILL	34	24
STA.		TO STA.		
FED. ROAD DIST. NO.	ILLINOIS	FED. AID PROJECT		



Line Post (Socketed)

Line Post (Driven)

42" Deep with Mow Strip

PLOT DATE = 2/28/2006  
 FILE NAME = c:\projects\105206\detail.dgn  
 PLOT SCALE = 1/8"=1'-0" / IN.  
 USER NAME = csmrhm

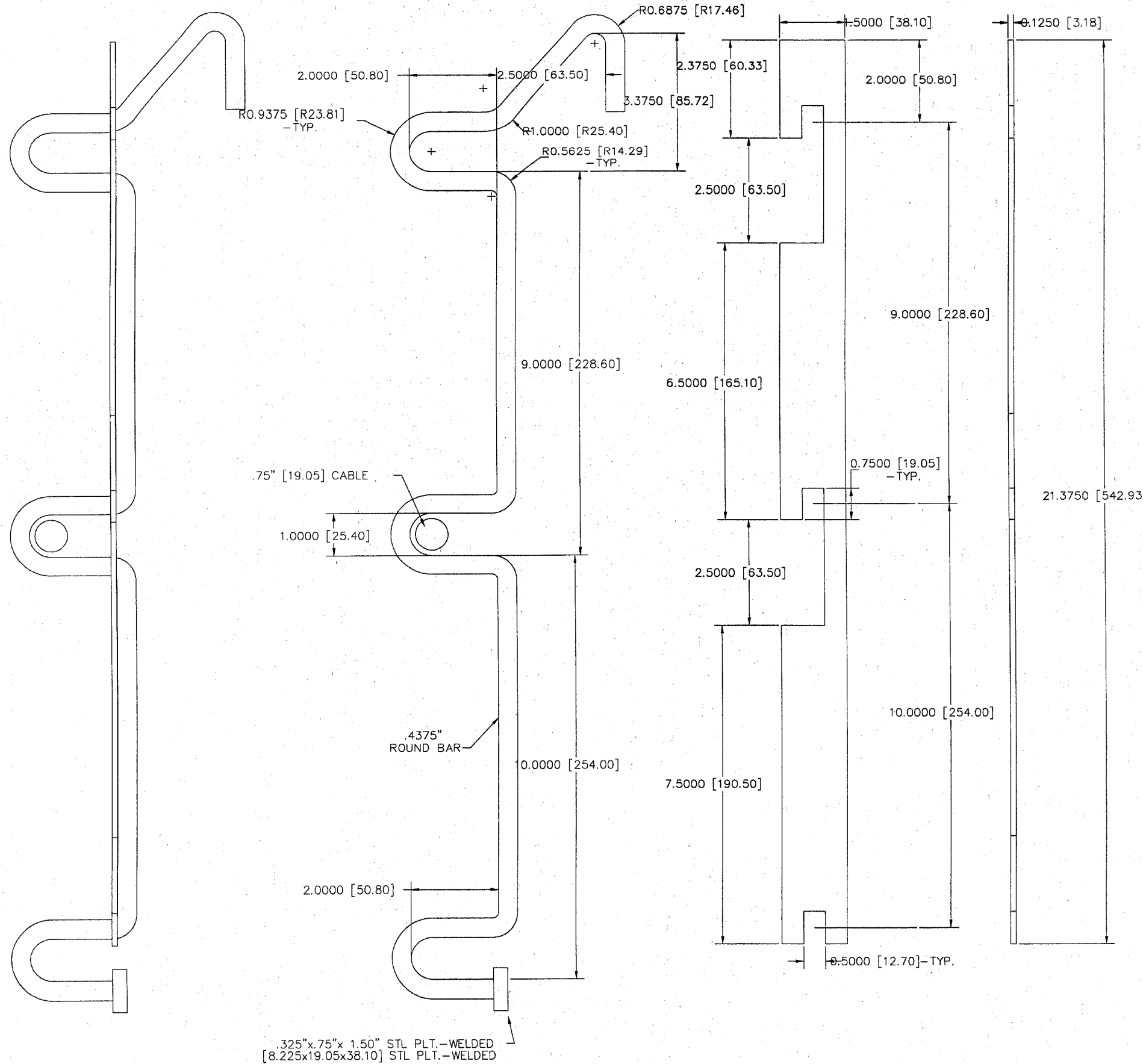
REVISIONS		ILLINOIS DEPARTMENT OF TRANSPORTATION
NAME	DATE	
		INTERSTATE 80 PLAN DETAILS
SCALE: VERT. HORIZ. DATE		DRAWN BY CHECKED BY



# HAIRPIN(TL-4)-PART 4-L29

# LOCKPLATE(TL-4)-PART 4-L30

CONTRACT NO. 60A42				
F.A.I. RTE.	SECTION	COUNTY	TOTAL SHEETS	SHEET NO.
80	99-1-1-3	WILL	34	25
STA.		TO STA.		
FED. ROAD DIST. NO.		ILLINOIS FED. AID PROJECT		



# HAIRPIN(TL-4)-PART 4-L29 LOCKPLATE(TL-4)-PART 4-L30

## TL-4 LINE POST ASSEMBLY

REVISIONS	
NAME	DATE

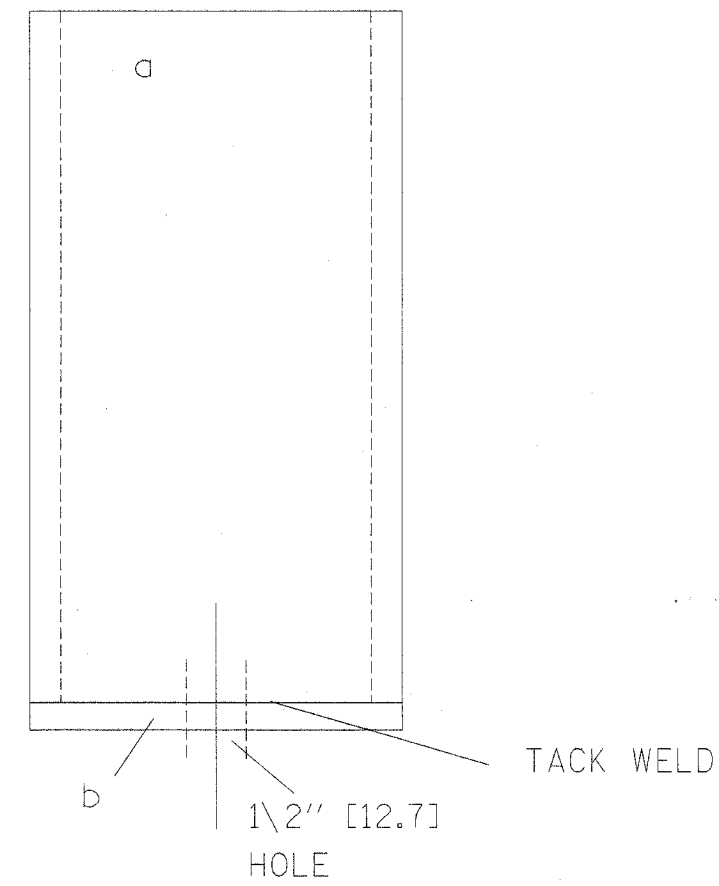
ILLINOIS DEPARTMENT OF TRANSPORTATION  
INTERSTATE 80  
PLAN DETAILS  
SCALE: VERT. DATE  
HORIZ. DATE  
DRAWN BY  
CHECKED BY

F.A.I. RTE.	SECTION	COUNTY	TOTAL SHEETS	SHEET NO.
80	99-1-1-3	WILL	34	26
STA.		TO STA.		
FED. ROAD DIST. NO.	ILLINOIS	FED. AID PROJECT		

Gibraltar  
 Cable Barrier System  
 12/21/05 - TJ

PART # 4-LT46  
 TERMINAL POST SLEEVE  
 GALVANIZED WT = 12.1#

- 1 - a HSS 4 x 3 x 15"
- 1 - a HSS [101.60x76.20x381.00]
- 1 - b PL 4 x 3 x 1/8
- 1 - b PL [101.60x76.20x3.175]



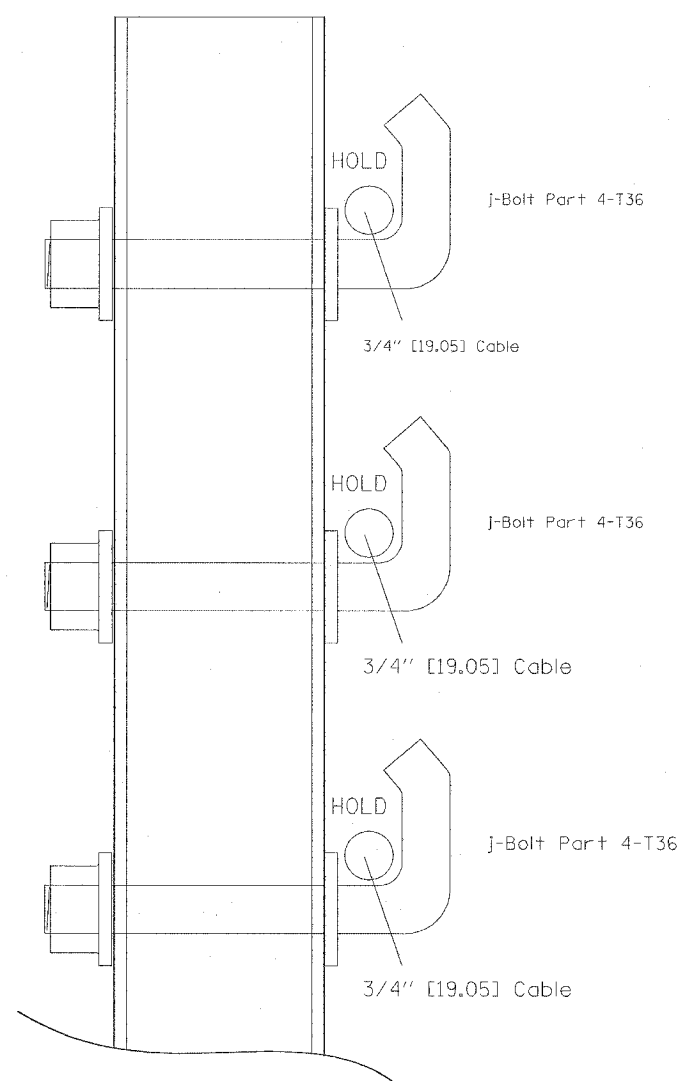
REVISIONS		ILLINOIS DEPARTMENT OF TRANSPORTATION
NAME	DATE	
		INTERSTATE 80 PLAN DETAILS

SCALE: VERT. DATE  
 HORIZ. DRAWN BY  
 CHECKED BY

F.A.I. RTE.	SECTION	COUNTY	TOTAL SHEETS	SHEET NO.
80	99-1-I-3	WILL	34	27
STA.		TO STA.		
FED. ROAD DIST. NO.	ILLINOIS	FED. AID PROJECT		

Gibraltar  
Cable Barrier System  
12/21/05 - TJ

TERMINAL POST  
ASSEMBLY



PLOT DATE = 2/28/2006  
FILE NAME = c:\projects\01020205\detail.dgn  
PLOT DATE = 02/28/06 / JN  
USER NAME = jcmartin

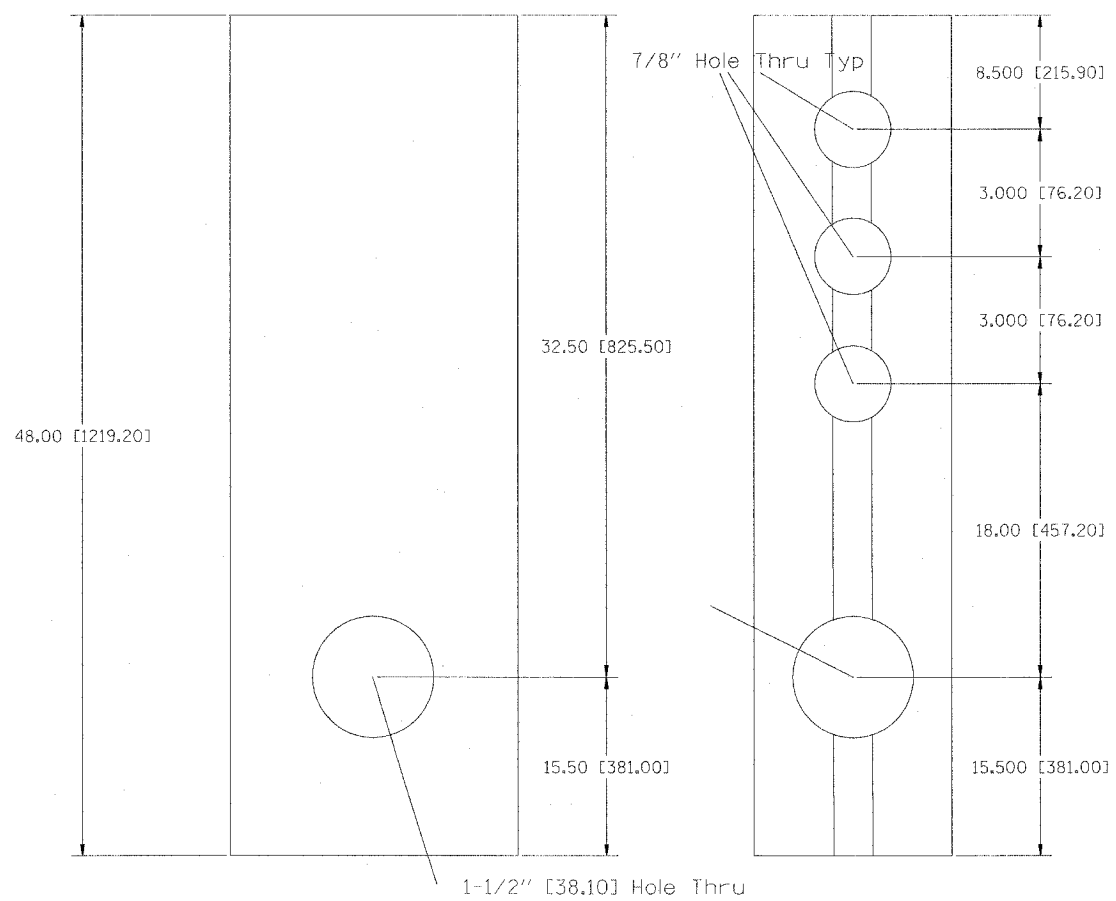
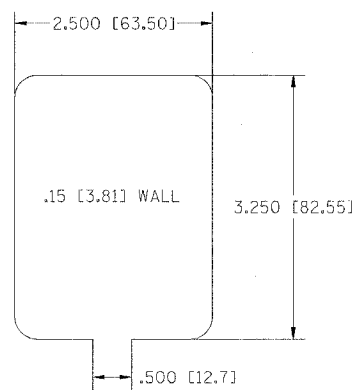
REVISIONS	
NAME	DATE

ILLINOIS DEPARTMENT OF TRANSPORTATION  
  
INTERSTATE 80  
PLAN DETAILS  
  
SCALE: VERT.  
          HORIZ.  
DATE  
  
DRAWN BY  
CHECKED BY

F.A.I. RTE.	SECTION	COUNTY	TOTAL SHEETS	SHEET NO.
80	99-1-1-3	WILL	34	28
STA.		TO STA.		
FED. ROAD DIST. NO.	ILLINOIS	FED. AID PROJECT		

Gibraltar  
Cable Barrier System  
12/21/05 - TJ  
TERMINAL POST NO.1/WEAK  
PART # 4-T37

GALVANIZED  
WT = 21.60#



PLOT DATE = 2/28/2006  
PLOT SCALE = 50.0000  
USER NAME = csmahm

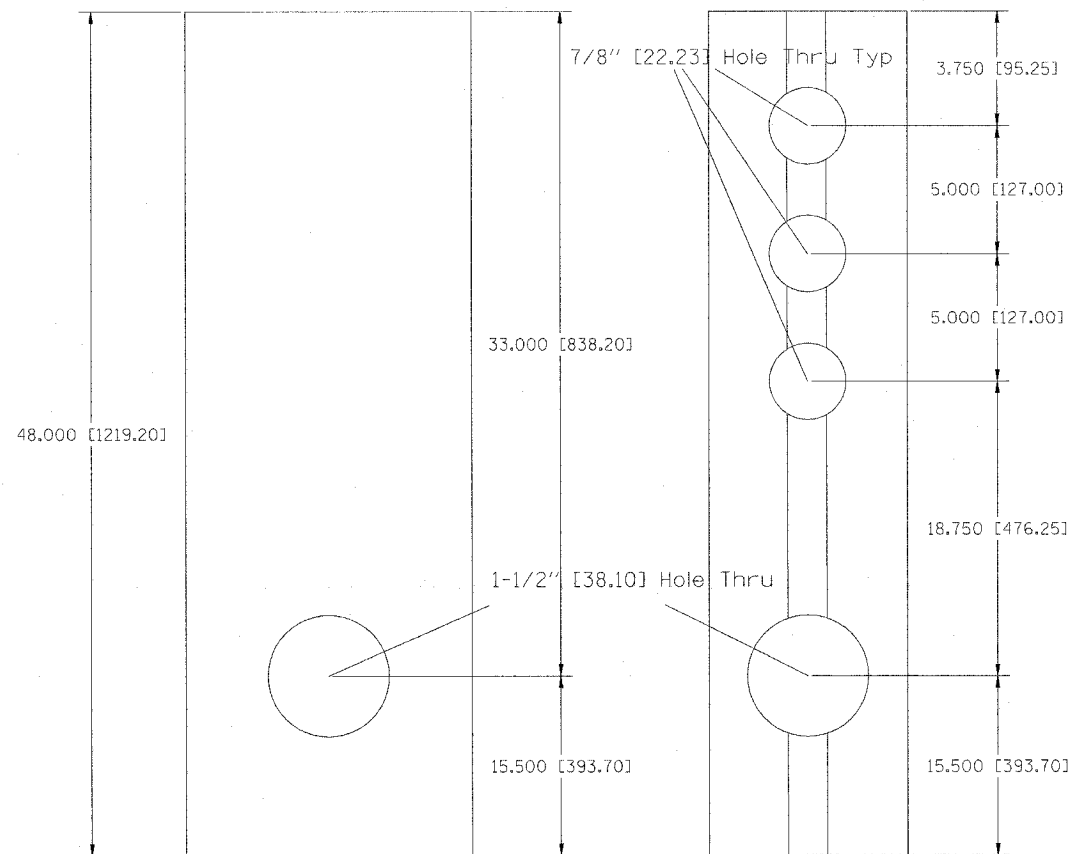
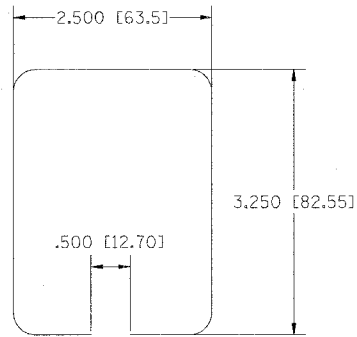
REVISIONS	
NAME	DATE

ILLINOIS DEPARTMENT OF TRANSPORTATION  
  
INTERSTATE 80  
PLAN DETAILS  
  
SCALE: VERT.  
DATE:            HORIZ.  
DRAWN BY  
CHECKED BY

F.A.I. RTE.	SECTION	COUNTY	TOTAL SHEETS	SHEET NO.
80	99-1-1-3	WILL	34	29
STA.		TO STA.		
FED. ROAD DIST. NO.	ILLINOIS	FED. AID PROJECT		

Gibraltar  
Cable Barrier System  
12/21/05 - TJ  
TERMINAL POST NO.2/WEAK  
PART # 4-T38

GALVANIZED  
WT = 21.60#



PLOT DATE = 2/25/2006  
PLOT SCALE = 1/8" = 1'-0"  
USER NAME = csmn/hm

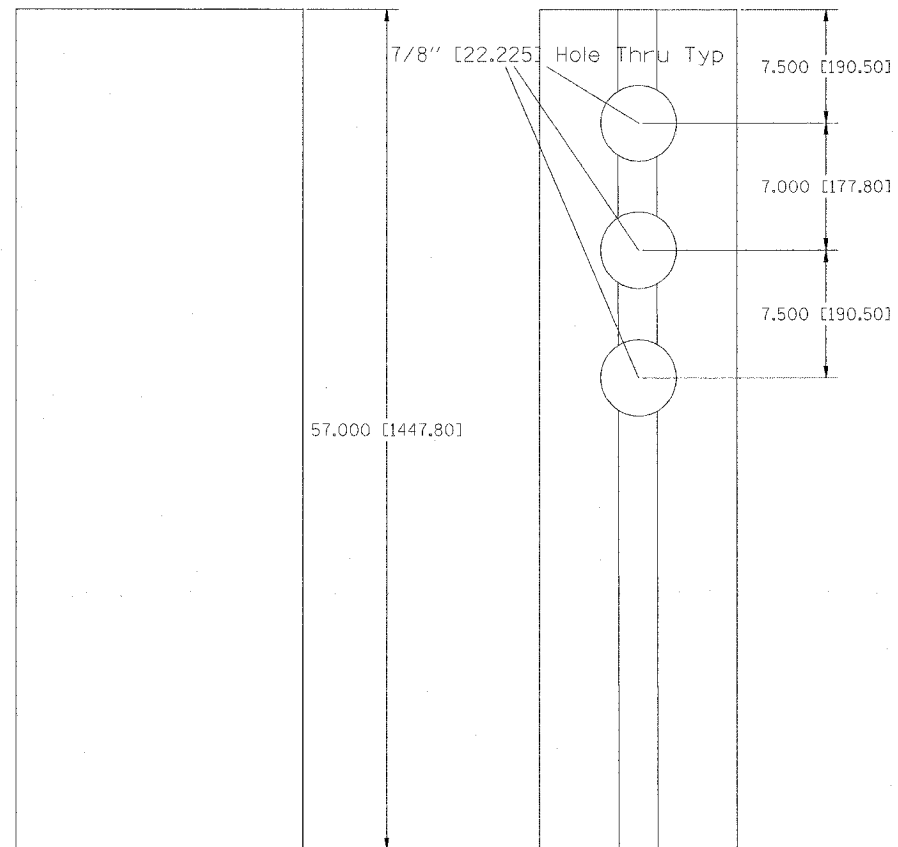
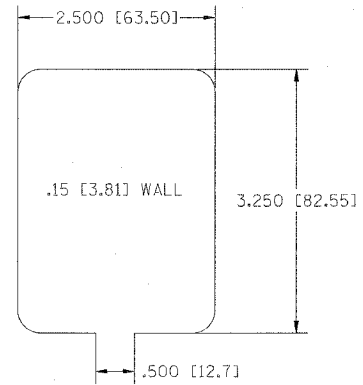
REVISIONS		DATE	SCALE: VERT. / HORIZ.	DRAWN BY	CHECKED BY
NAME					

ILLINOIS DEPARTMENT OF TRANSPORTATION  
  
INTERSTATE 80  
PLAN DETAILS

CONTRACT NO. 60A42

F.A.I. RTE.	SECTION	COUNTY	TOTAL SHEETS	SHEET NO.
80	99-1-I-3	WILL	34	30
STA.		TO STA.		
FED. ROAD DIST. NO.	ILLINOIS	FED. AID PROJECT		

Gibraltar  
 Cable Barrier System  
 12/21/05 - TJ  
 TERMINAL POST  
 NO.3/STANDARD  
 PART # 4-T39  
 GALVANIZED  
 WT = 25.65#



PLOT DATE = 2/28/2006  
 FILE NAME = c:\projects\j05226\details.dgn  
 PLOT SCALE = 1/8" = 1'-0"  
 USER NAME = oshorn

REVISIONS		ILLINOIS DEPARTMENT OF TRANSPORTATION	
NAME	DATE		

INTERSTATE 80  
 PLAN DETAILS

SCALE: VERT. HORIZ. DATE	DRAWN BY CHECKED BY
--------------------------------	------------------------

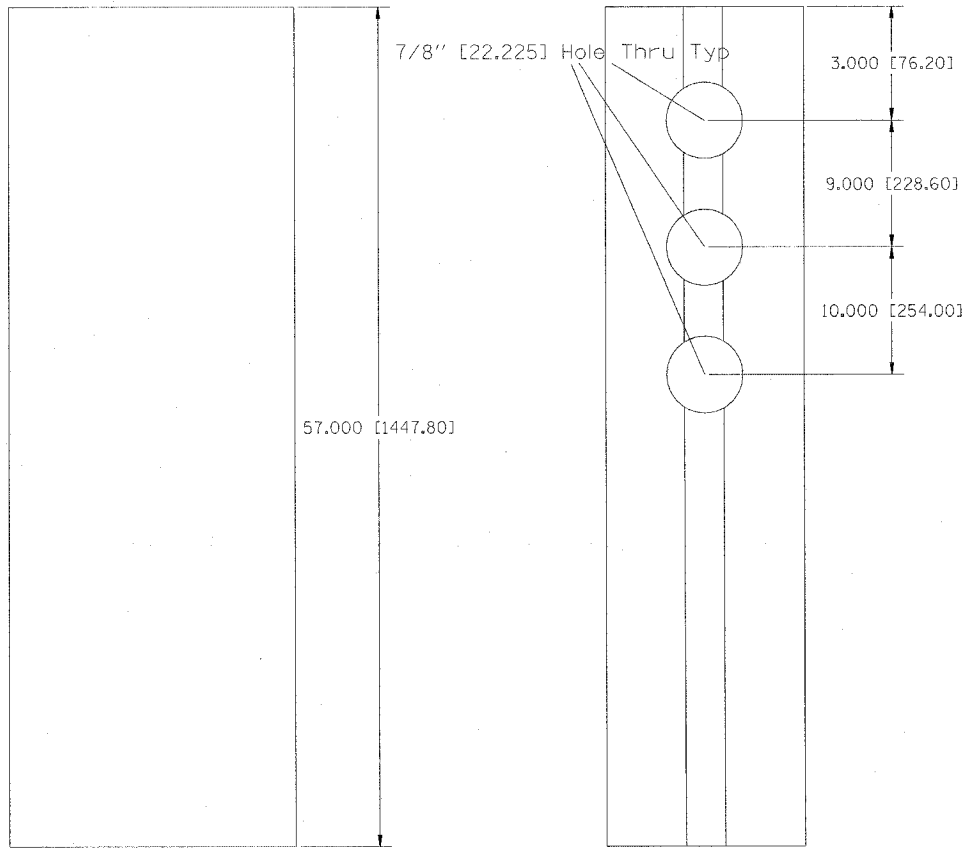
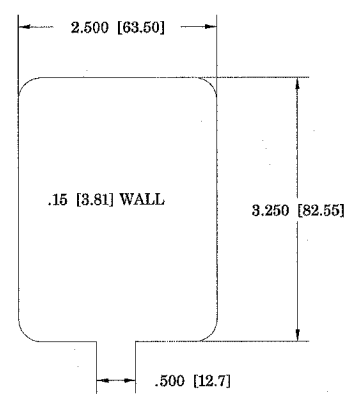
F.A.I. RTE.	SECTION	COUNTY	TOTAL SHEETS	SHEET NO.
80	99-1-1-3	WILL	34	31

STA.	TO STA.
FED. ROAD DIST. NO.	ILLINOIS FED. AID PROJECT

Gibraltar  
Cable Barrier System  
12/21/05 - TJ  
TERMINAL POST  
NO.4/STANDARD  
PART # 4-T40

GALVANIZED  
WT = 25.65#



PLOT DATE = 2/28/2006  
FILE NAME = c:\pcc\jcs\ad\05286\detail.dgn  
PLOT SCALE = 80.0000 / IN.  
USER NAME = cameron

REVISIONS		ILLINOIS DEPARTMENT OF TRANSPORTATION
NAME	DATE	
		INTERSTATE 80 PLAN DETAILS

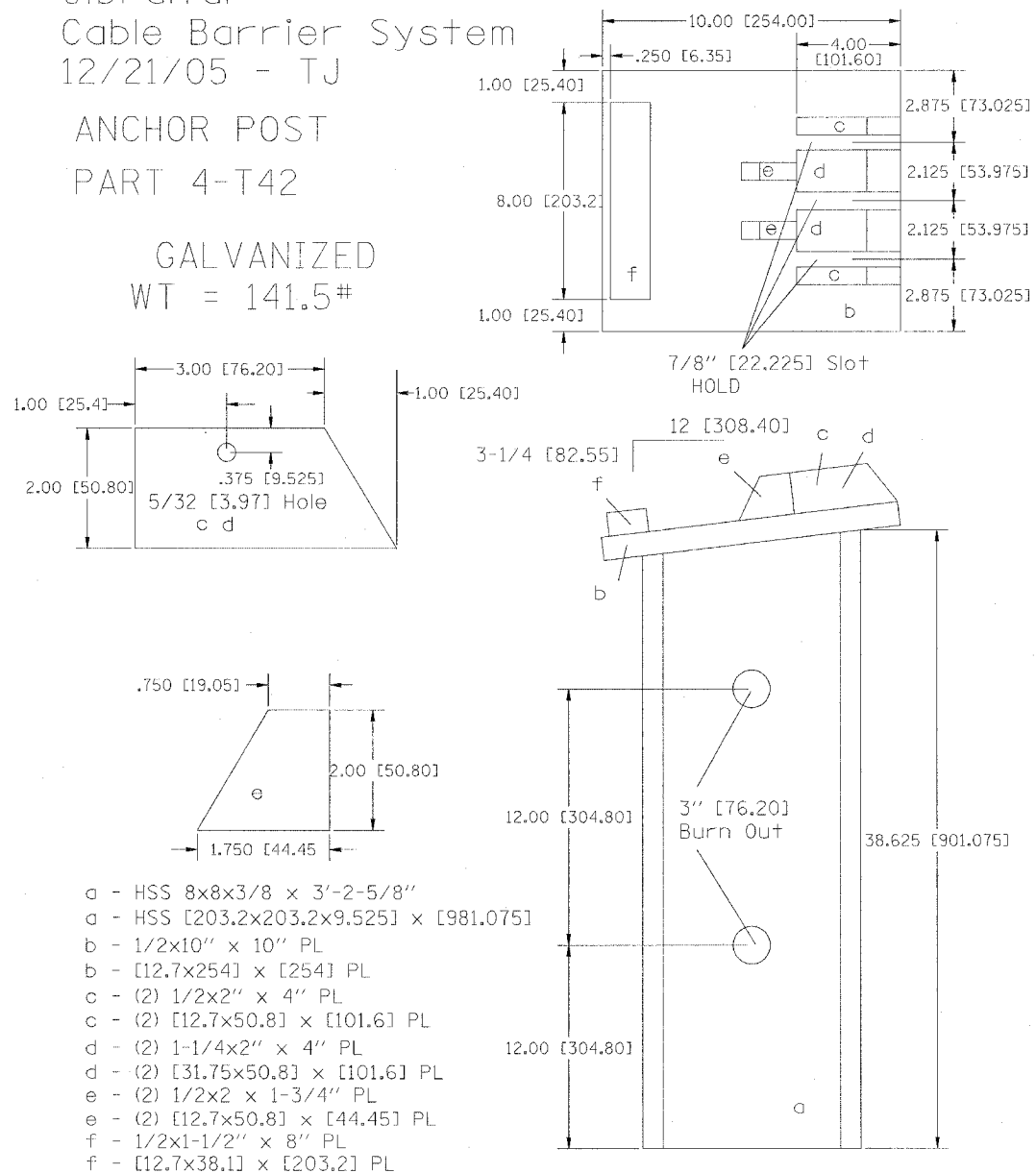
  

SCALE:	VERT.	DRAWN BY
	HORIZ.	

F.A.I. RTE.	SECTION	COUNTY	TOTAL SHEETS	SHEET NO.
80	99-1-I-3	WILL	34	32
STA.		TO STA.		
FED. ROAD DIST. NO.	ILLINOIS	FED. AID PROJECT		

Gibraltar  
Cable Barrier System  
12/21/05 - TJ  
ANCHOR POST  
PART 4-T42

GALVANIZED  
WT = 141.5#



- a - HSS 8x8x3/8 x 3'-2-5/8"
- a - HSS [203.2x203.2x9.525] x [981.075]
- b - 1/2x10" x 10" PL
- b - [12.7x254] x [254] PL
- c - (2) 1/2x2" x 4" PL
- c - (2) [12.7x50.8] x [101.6] PL
- d - (2) 1-1/4x2" x 4" PL
- d - (2) [31.75x50.8] x [101.6] PL
- e - (2) 1/2x2 x 1-3/4" PL
- e - (2) [12.7x50.8] x [44.45] PL
- f - 1/2x1-1/2" x 8" PL
- f - [12.7x38.1] x [203.2] PL

1/4" Weld Cont UNO

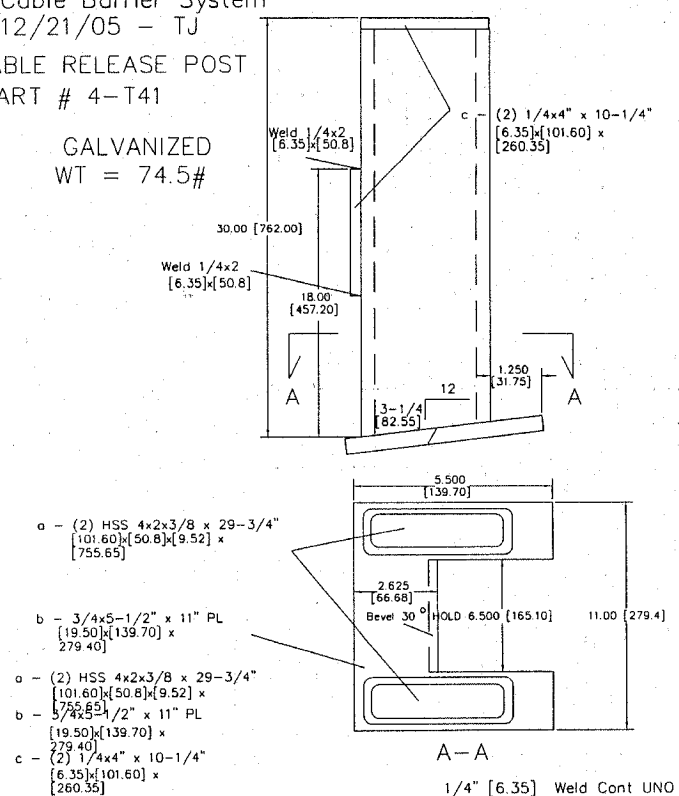
REVISIONS		ILLINOIS DEPARTMENT OF TRANSPORTATION
NAME	DATE	
		INTERSTATE 80 PLAN DETAILS
SCALE: VERT. DATE		DRAWN BY CHECKED BY



F.A.I. RTE.	SECTION	COUNTY	TOTAL SHEETS	SHEET NO.
80	99-1-1-3	WILL	34	33
STA.		TO STA.		
FED. ROAD DIST. NO. 1		ILLINOIS FED. AID PROJECT		
CONTRACT 60A42				

Gibraltar  
Cable Barrier System  
12/21/05 - TJ  
CABLE RELEASE POST  
PART # 4-T41

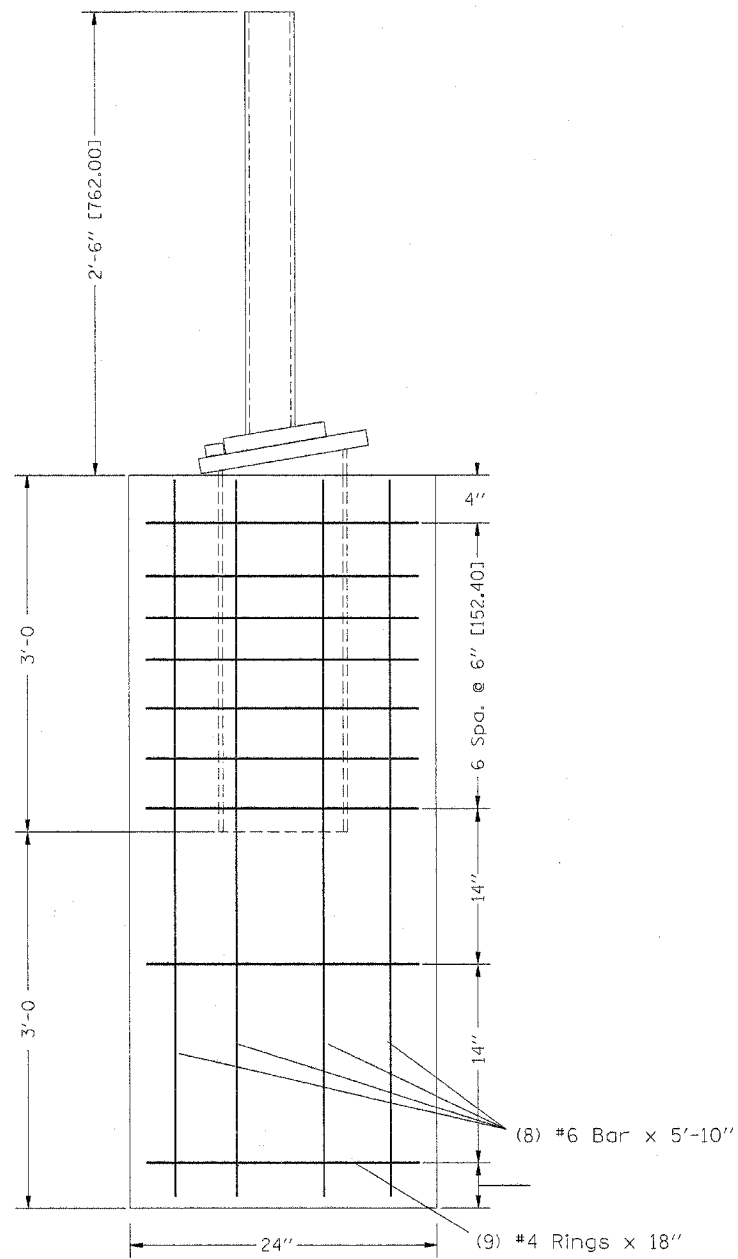
GALVANIZED  
WT = 74.5#



CABLE RELEASE POST  
PART 4-T41

REVISIONS		ILLINOIS DEPARTMENT OF TRANSPORTATION
NAME	DATE	
		<b>INTERSTATE 80</b>  <b>PLAN DETAILS</b>  SCALE : NONE 3/1/2006
		DRAWN BY: CHECKED BY:

F.A.I. RTE.	SECTION	COUNTY	TOTAL SHEETS	SHEET NO.
80	99-1-1-3	WILL	34	34
STA.		TO STA.		
FED. ROAD DIST. NO.	ILLINOIS	FED. AID PROJECT		



PLOT DATE = 3/1/2006  
 FILE NAME = c:\pco\meta\185206\detail.dgn  
 PLOT SCALE = 50.0000 / IN.  
 USER NAME = c:\pco\meta\185206\detail.dgn

REVISIONS	
NAME	DATE

ILLINOIS DEPARTMENT OF TRANSPORTATION  
 INTERSTATE 80  
 PLAN DETAILS  
 ANCHOR POST REPAIR

SCALE: VERT.      DRAWN BY  
 HORIZ.              CHECKED BY

DATE