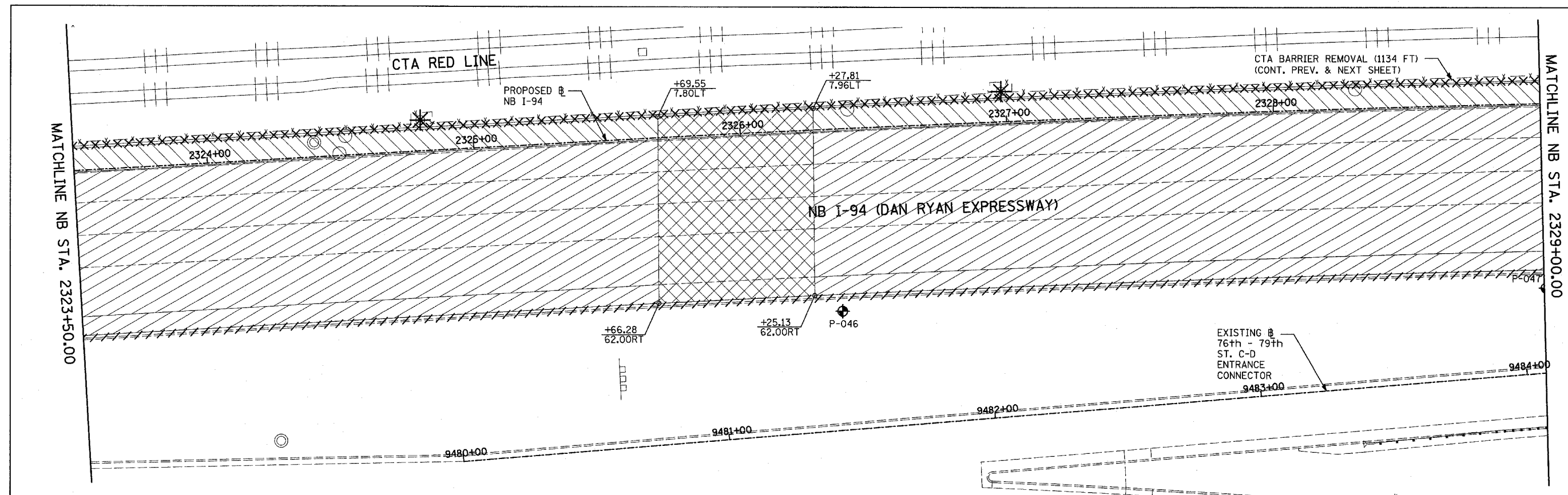
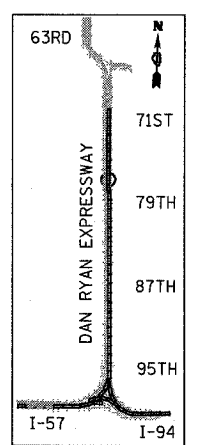
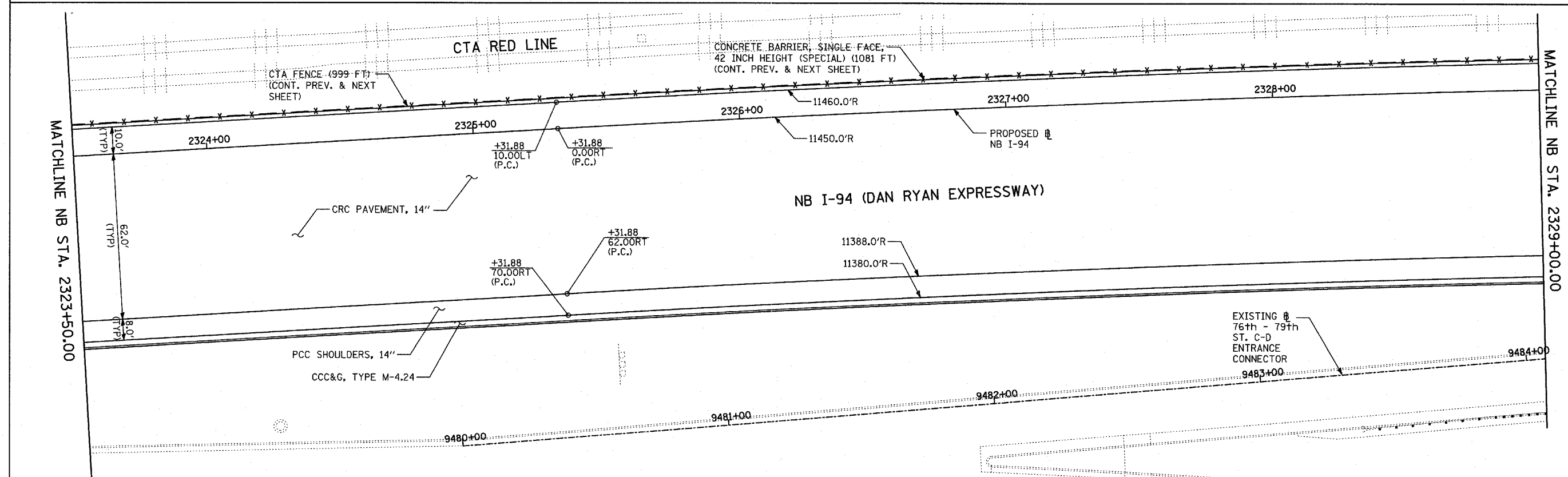


F.A.I. RTE.	SECTION	COUNTY	TOTAL SHEETS	SHEET NO.
94	1818 R-3	COOK	265	36
STA. 2316+00		TO STA. 2367+00		
FED. ROAD DIST. NO.		ILLINOIS FED. AID PROJECT		

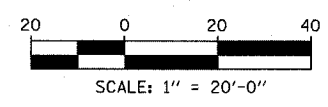
60B17



EXISTING CONDITIONS  
PROPOSED IMPROVEMENTS



LOCATION MAP



**LEGEND:**

	COMB CONC CURB & GUTTER REMOVAL		PAVEMENT REMOVAL		LIGHT POLE FOUNDATION REMOVAL (SEE ROADWAY LIGHTING & SURVEILLANCE PLANS)
	CHAIN LINK FENCE REMOVAL		PAVED SHOULDER REMOVAL		MAINLINE STATION/OFFSET
	CONCRETE BARRIER/GUARDRAIL REMOVAL		PAVEMENT/SHOULDER REMOVAL, SPECIAL		PLAN NOTES:
	TREE REMOVAL (UNITS) (NO UNIT SHOWN = <6)		BITUMINOUS SURFACE REMOVAL, 4"	- ALL STATION/OFFSET/RADIUS CALLOUTS MEASURED TO EDGE OF PAVEMENT UNLESS OTHERWISE NOTED.	
	SOIL BORING LOCATIONS		BITUMINOUS SURFACE REMOVAL, 1/2" OR 3/4" (SEE CALLOUT)	- EXACT LOCATIONS OF EXISTING PIERS/ABUTMENTS TO BE FIELD VERIFIED	

REVISIONS	
NAME	DATE

ILLINOIS DEPARTMENT OF TRANSPORTATION  
F.A.I. 94 (DAN RYAN EXPRESSWAY)  
EXISTING AND PROPOSED PLAN  
NB I-94 (DAN RYAN EXPRESSWAY)  
NB I-94 STA. 2323+50.00 TO 2329+00.00

SCALE: 1"=20'  
DATE: MARCH 7, 2006

DRAWN BY: RTM  
CHECKED BY: MPG

TYLIN INTERNATIONAL