

LEGEND - WHITE BACKGROUND - GREEN 10" E LETTERS

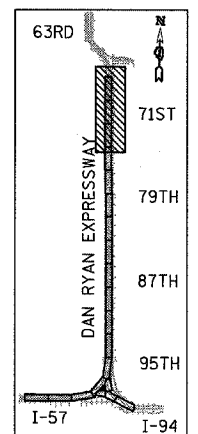
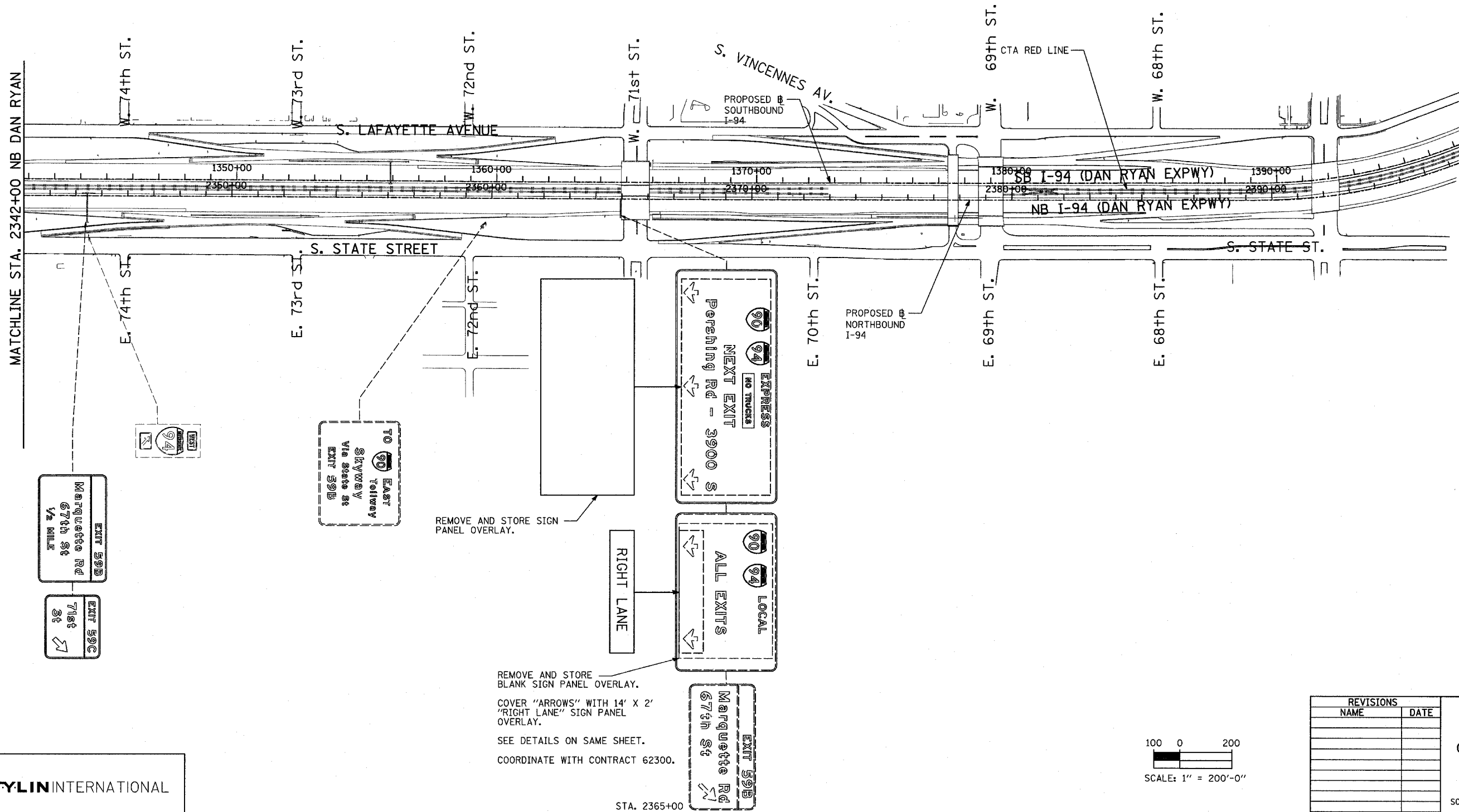
STA. 2365+00

TEMPORARY INFORMATION SIGNING - 28 SF



SIGNING LEGEND:

- EXISTING GROUND MOUNTED SIGN
- EXISTING OVERHEAD TRUSS MOUNTED SIGN
- EXISTING OVERHEAD SIGN STRUCTURE-BRIDGE MOUNTED
- EXISTING OVERHEAD CANTILEVER MOUNTED SIGN
- PROPOSED GROUND MOUNTED SIGN
- PROPOSED OVERHEAD SIGN STRUCTURE - TRUSS
- CONSTRUCTION ZONE
- EXISTING SIGN
- EXISTING SIGN TO BE REMOVED
- PROPOSED SIGN



LOCATION MAP

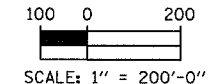
REMOVE AND STORE SIGN PANEL OVERLAY.

REMOVE AND STORE BLANK SIGN PANEL OVERLAY.

COVER "ARROWS" WITH 14' X 2' "RIGHT LANE" SIGN PANEL OVERLAY.

SEE DETAILS ON SAME SHEET.

COORDINATE WITH CONTRACT 62300.



REVISIONS	
NAME	DATE

ILLINOIS DEPARTMENT OF TRANSPORTATION
 F.A.I. 94 (DAN RYAN EXPRESSWAY)
 CONSTRUCTION SIGNING-STAGE WINTER
 STA. 2342+00 TO STA. 2396+00
 SHEET 2 OF 2

SCALE: 1" = 200'
 DATE: MARCH 7, 2006
 DRAWN BY: AMB
 CHECKED BY: TGB

TYLIN INTERNATIONAL

STA. 2365+00