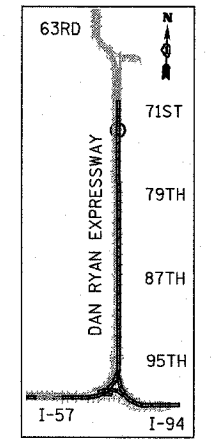
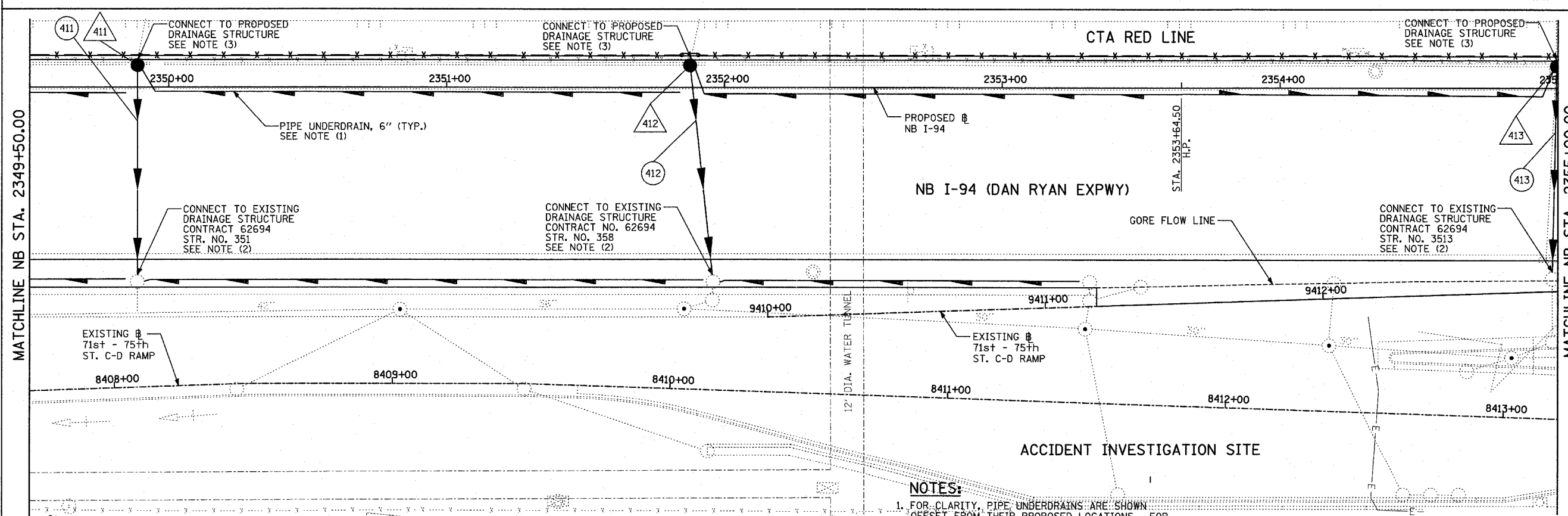
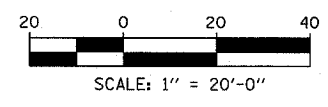


EXISTING CONDITIONS  
PROPOSED IMPROVEMENTS



LOCATION MAP



- NOTES:**
- FOR CLARITY, PIPE UNDERDRAINS ARE SHOWN OFFSET FROM THEIR PROPOSED LOCATIONS. FOR DETAILED PLACEMENT, SEE SHEET "PIPE UNDERDRAINS DETAIL."
  - CORE DRILL AND CONNECT TO EXISTING DRAINAGE STRUCTURE. CONNECTION COST SHALL BE INCLUDED IN THE COST TO CONSTRUCT THE STORM SEWER.
  - ALL CONNECTIONS TO EXISTING SEWER OR STRUCTURE ALONG CTA SHALL BE FIELD VERIFIED PRIOR TO INSTALLATION AND COORDINATED WITH CTA CONSTRUCTION. COST SHALL BE INCLUDED IN THE COST TO CONSTRUCT THE DRAINAGE STRUCTURE.

**LEGEND:**

	EXISTING COMBINED SEWER		SEWER PLUG
	PROPOSED STORM SEWER NUMBER (X=SHEET NO., Y=PIPE NO.)		FIELD VERIFY
	PROPOSED STRUCTURE NUMBER (X=SHEET NO., Y=STRUCTURE NO.)		UTILITY REMOVAL
	PIPE STUBOUT TO BE PLUGGED		

REVISIONS	
NAME	DATE

ILLINOIS DEPARTMENT OF TRANSPORTATION  
 F.A.I. 94 (DAN RYAN EXPRESSWAY)  
 DRAINAGE AND UTILITY PROPOSED PLAN  
 NB I-94 (DAN RYAN EXPRESSWAY)  
 NB I-94 STA. 2349+50.00 TO 2355+00.00

SCALE: 1"=20'  
 DATE: MARCH 7, 2006  
 DRAWN BY: MB  
 CHECKED BY: DA