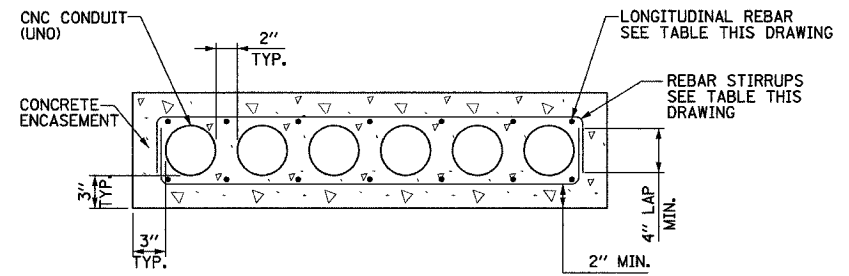
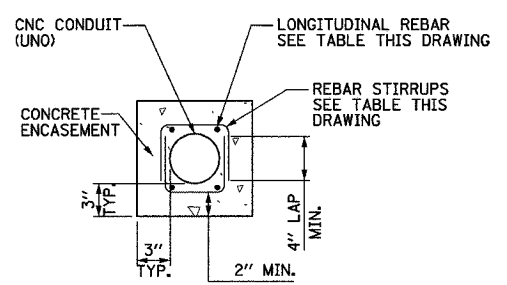


NOTES:

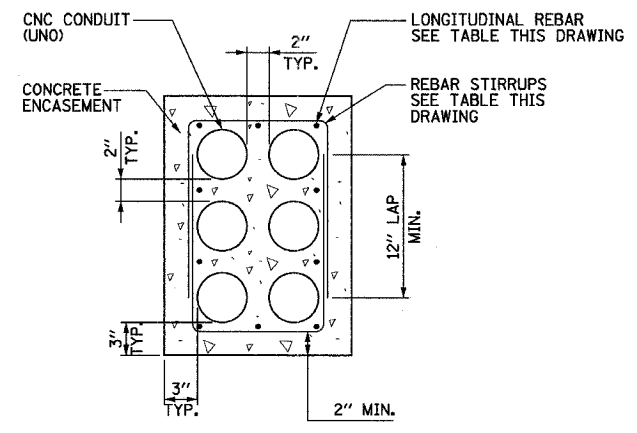
- SEE DRAWINGS 20C/EI-100 AND 20C/EI-101 FOR ELECTRICAL SYMBOLS AND ABBREVIATIONS.
- PROVIDE MINIMUM CLEARANCE SHOWN FROM TOP OF DUCTBANK TO FINISHED GRADE FOR ALL DUCTBANKS, REGARDLESS OF SIZE. CONTRACTOR SHALL INSTALL DUCTBANKS SUCH THAT THEY WILL CLEAR ALL UNDERGROUND OBSTACLES.
- TRENCH SHALL HAVE MINIMUM WIDTH SHOWN FOR ALL DUCTBANKS DETAILED ON THIS DRAWING. THE CONTRACTOR SHALL INCREASE TRENCH WIDTH FOR ADDITIONAL CONDUITS, AS DIRECTED BY THE ENGINEER, (AT NO ADDITIONAL COST).



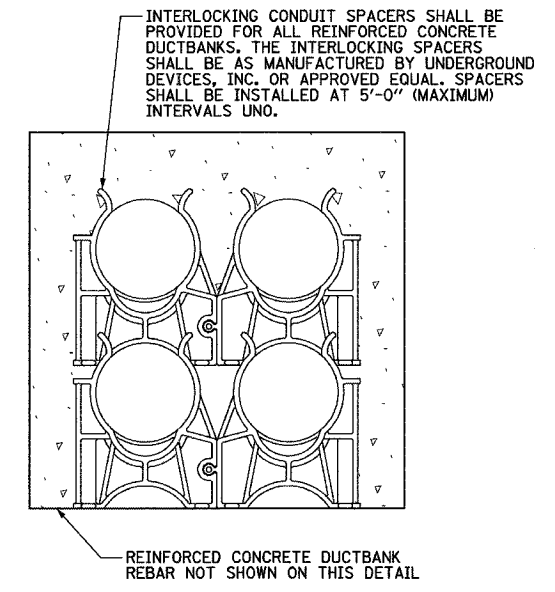
**6x1 DUCTBANK DETAIL-
IN REINFORCED CONCRETE**
NOT TO SCALE



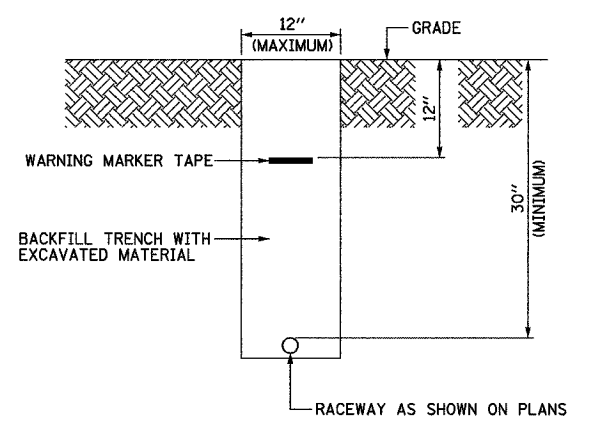
**1x1 DUCTBANK DETAIL-
IN REINFORCED CONCRETE**
NOT TO SCALE



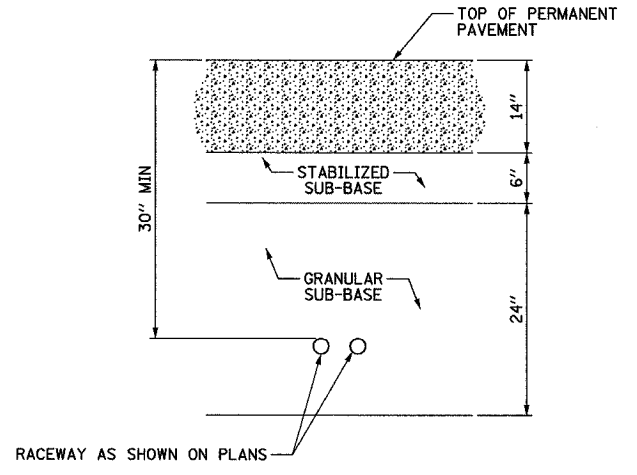
**2x3 DUCTBANK DETAIL-
IN REINFORCED CONCRETE**
NOT TO SCALE



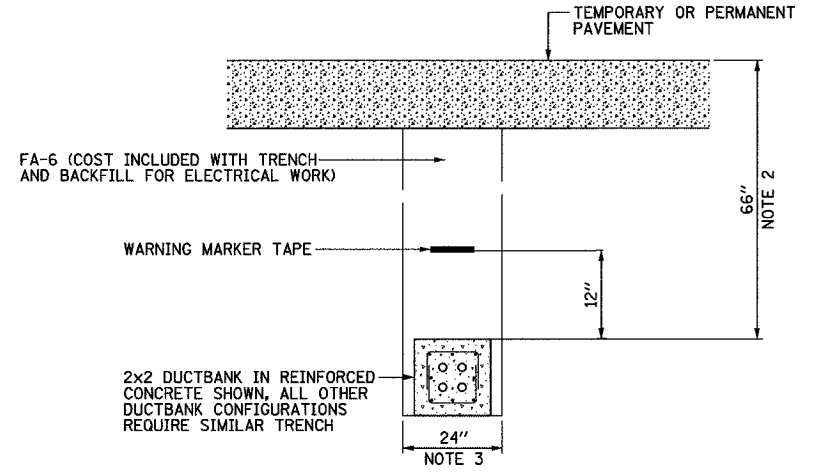
INTERLOCKING CONDUIT SPACER DETAIL
NOT TO SCALE



**TYPICAL ELECTRICAL
CONDUIT IN UNPAVED AREA**
NOT TO SCALE



**TYPICAL SURVEILLANCE
CONDUIT UNDER PERMANENT PAVEMENT**
NOT TO SCALE



**TYPICAL ELECTRICAL
DUCTBANK UNDER PAVEMENT**
NOT TO SCALE

DUCTBANK REINFORCEMENT TABLE		
DUCTBANK CONCRETE CROSS-SECTIONAL AREA SQ. INCHES	LONGITUDINAL REBAR	REBAR STIRRUPS
	BARS	
LESS THAN 450	#4	#3 AT 12" SPACING
451 TO 650	#5	#3 AT 12" SPACING
GREATER THAN 651	#6	#3 AT 12" SPACING

REVISIONS	
NAME	DATE

ILLINOIS DEPARTMENT OF TRANSPORTATION
F.A.I. 94 (DAN RYAN EXPRESSWAY)

ELECTRICAL DUCTBANK DETAILS

SCALE: NOT TO SCALE DRAWN BY:
DATE: MARCH 7, 2006 CHECKED BY:

SINGH 300 W. ADAMS ST.
CHICAGO, IL 60606
TEL: (312) 629-0240
SINGH & ASSOCIATES, INC. CONSULTING ENGINEERS FAX: (312) 629-8449

J:\75\contract\20c_details\c20c_60B17.dwg 3/7/2006 4:44 PM