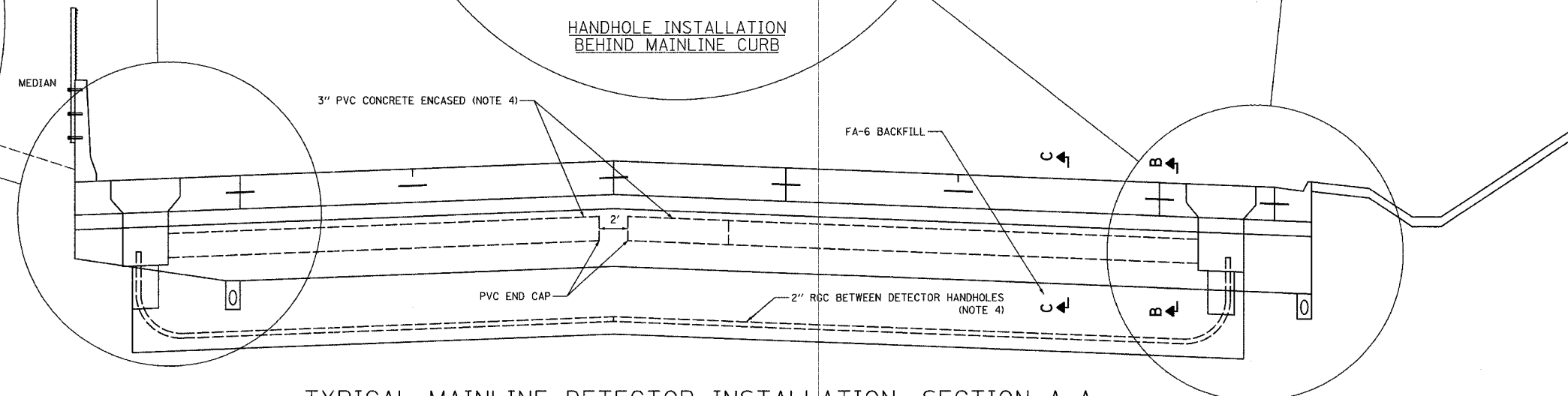
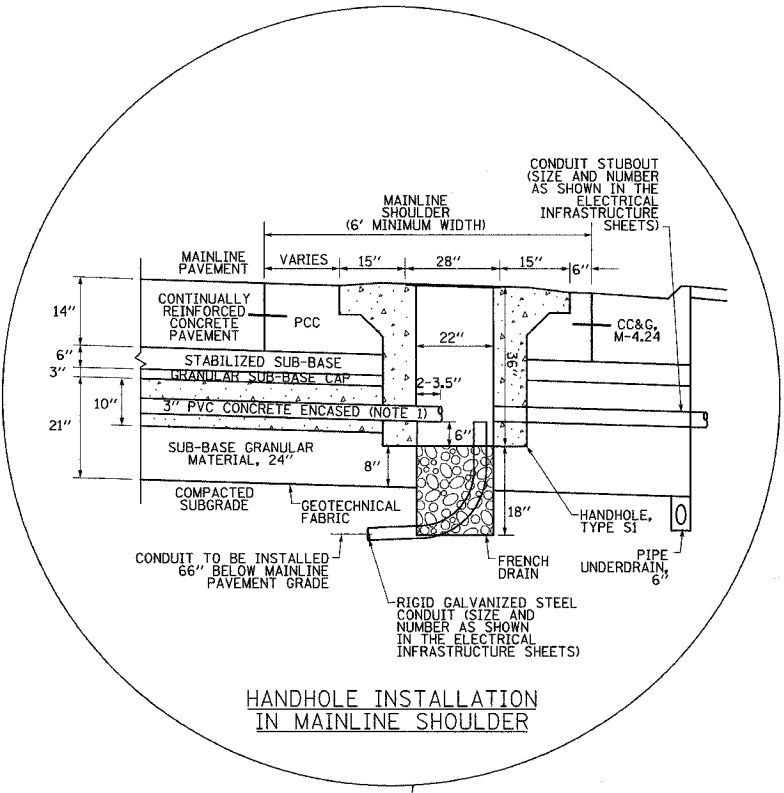
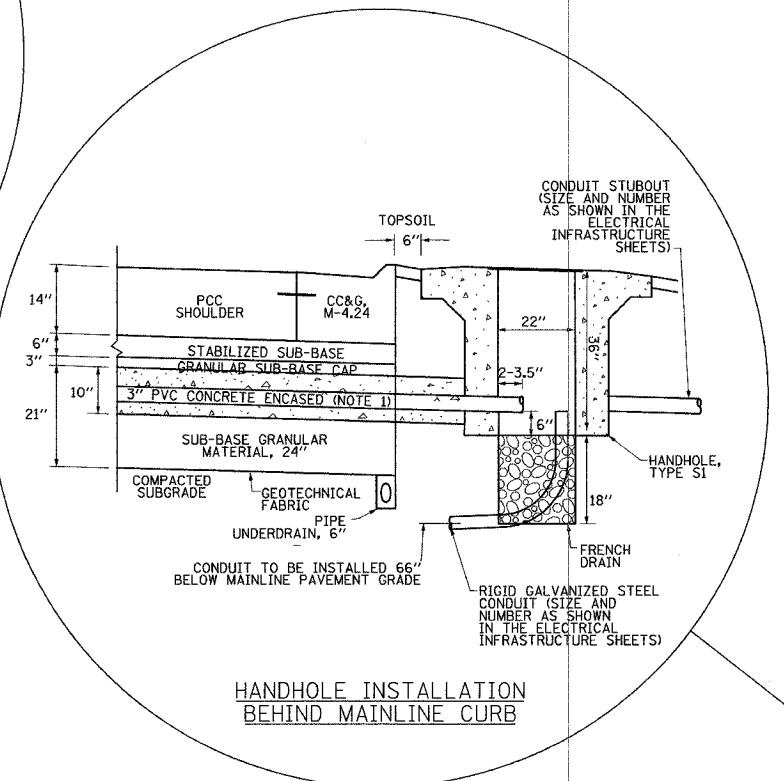
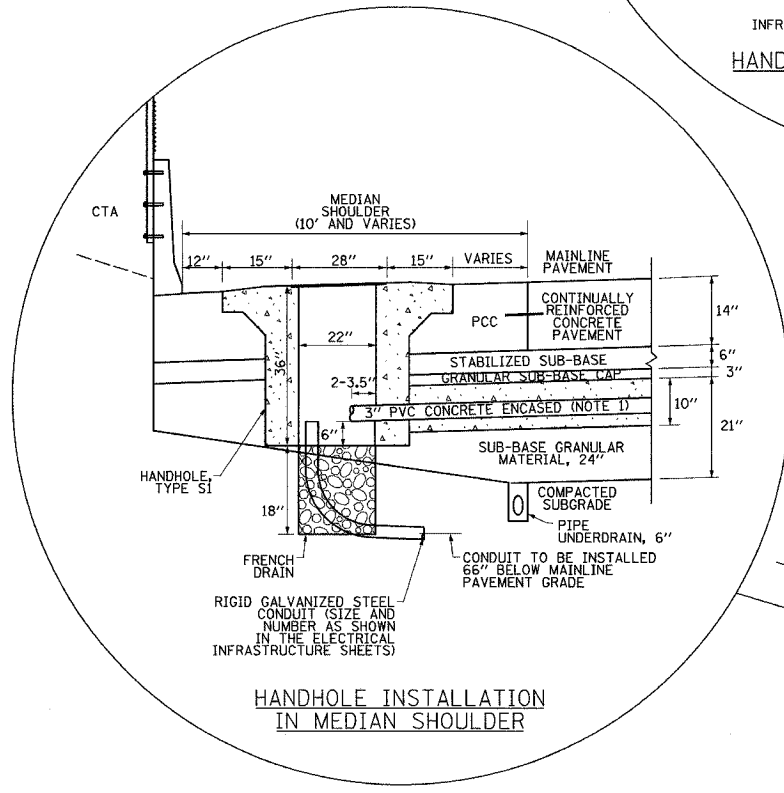
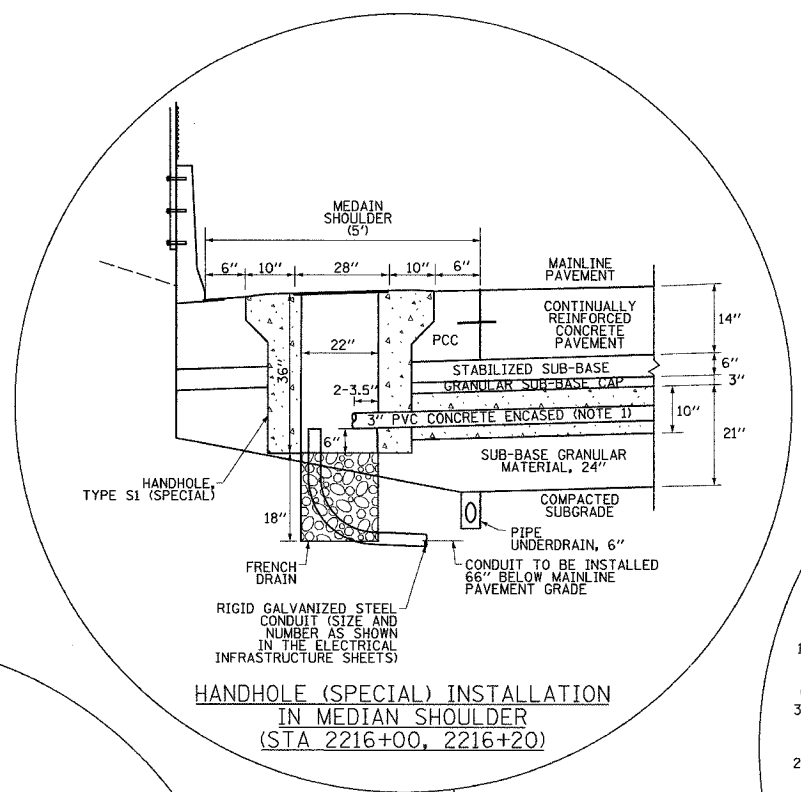


| | | | | |
|---------------------|----------|------------------|--------------|-----------|
| F.A.I. RTE. | SECTION | COUNTY | TOTAL SHEETS | SHEET NO. |
| 94 | 1818 R-3 | COOK | 265 | 178 |
| STA. | | TO STA. | | |
| FED. ROAD DIST. NO. | ILLINOIS | FED. AID PROJECT | | |

60B17



TYPICAL MAINLINE DETECTOR INSTALLATION: SECTION A-A

- NOTES**
- 3" PVC CONCRETE ENCASED CONDUIT IS REQUIRED ONLY WHERE SHOWN ON THE PLAN DRAWINGS. WHEN INSTALLED, THE CONDUIT MUST MAINTAIN THE SAME ANGLE AS THE PAVEMENT THROUGHOUT ITS ENTIRE LENGTH.
 - FOR HANDHOLE DETAIL SEE SHEET EI-106.
 - WHEN INSTALLING CONDUIT NEAR OR THROUGH UNDERDRAIN GEOTECHNICAL FABRIC, THE CONTRACTOR SHALL MAINTAIN THE INTEGRITY AND UNIFORMITY OF THE UNDERDRAIN FABRIC THROUGH OVERLAP TO THE SATISFACTION OF THE ENGINEER.
 - CONDUIT IS TO BE INSTALLED IN STAGES AS THE PAVEMENT IS BUILT. SEE SHEETS EI-110A AND EI-115.

SINGH 300 W. ADAMS ST.
CHICAGO, IL 60606
SINGH & ASSOCIATES, INC. TEL: (312) 629-0240
CONSULTING ENGINEERS FAX: (312) 629-8449

| REVISIONS | |
|-----------|------|
| NAME | DATE |
| | |
| | |
| | |
| | |
| | |
| | |
| | |
| | |
| | |

ILLINOIS DEPARTMENT OF TRANSPORTATION
F.A.I. 94 (DAN RYAN EXPRESSWAY)

TYPICAL MAINLINE DETECTOR INSTALLATION DETAIL (SHEET 1 OF 2)

SCALE: NTS
DATE: MARCH 7, 2006

DRAWN BY: NB
CHECKED BY: MJL

3/1/2006 4:49 PM