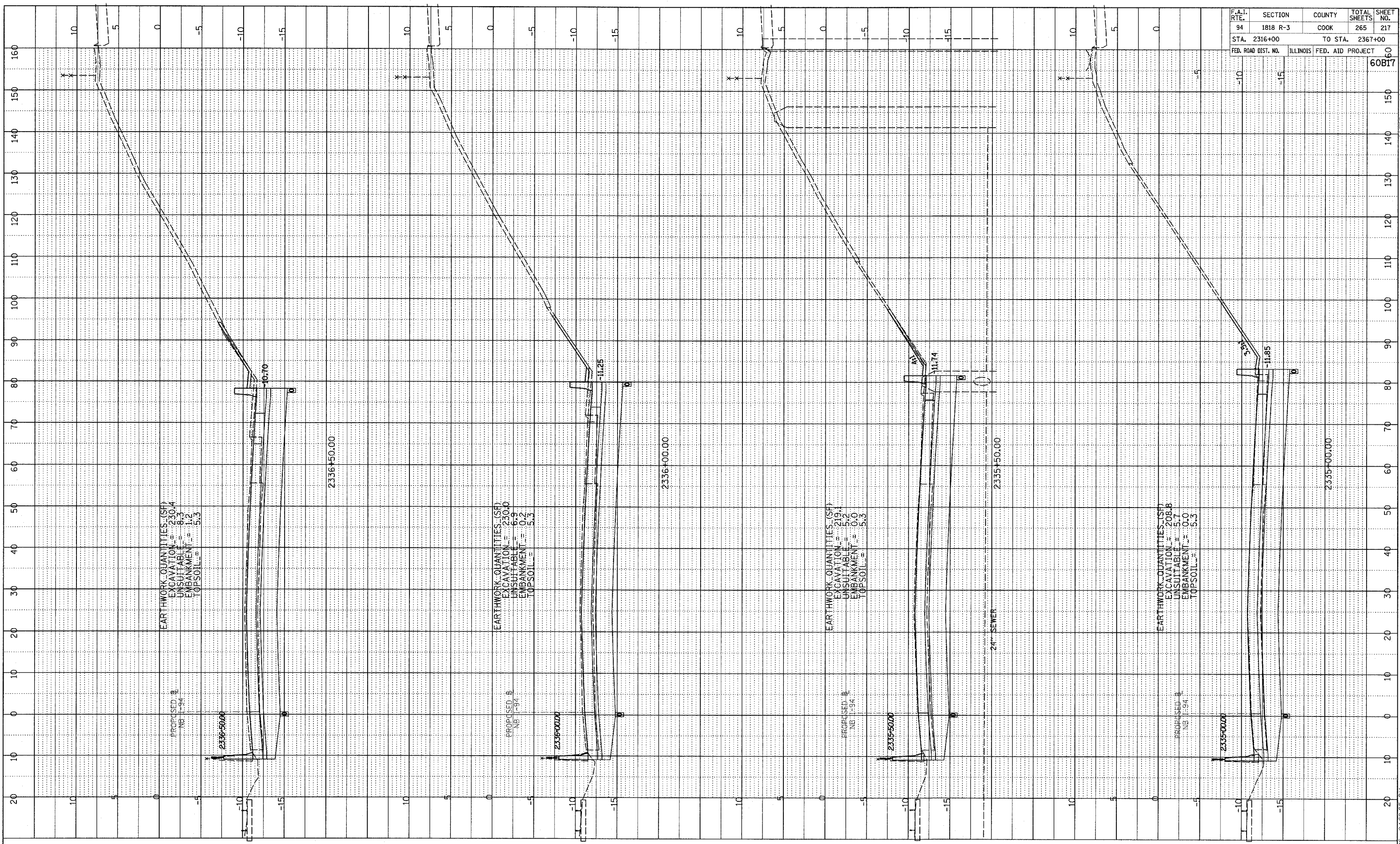


F.A.I. RTE.	SECTION	COUNTY	TOTAL SHEETS	SHEET NO.
94	1818 R-3	COOK	265	217
STA. 2316+00		TO STA. 2367+00		
FED. ROAD DIST. NO.		ILLINOIS FED. AID PROJECT		



PROFILE	DRAWN	DATE
NO.	BY	
NOTE BOOK		
STRUCTURE NOTATION CHKD		

TYLIN INTERNATIONAL



NORTHBOUND I-94 (DAN RYAN EXPWY)
STA. 2335+50 TO STA. 2337+00

03/03/2006 04:09:25 PM P:\02373V\road\2006\pk2006\ssb1975.dgn