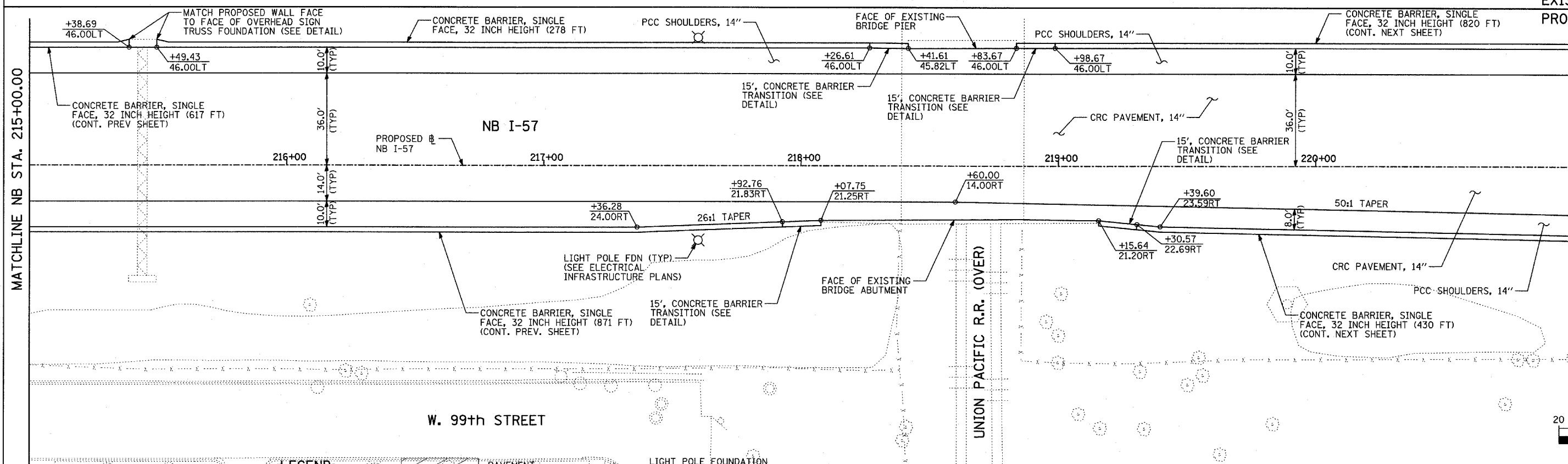
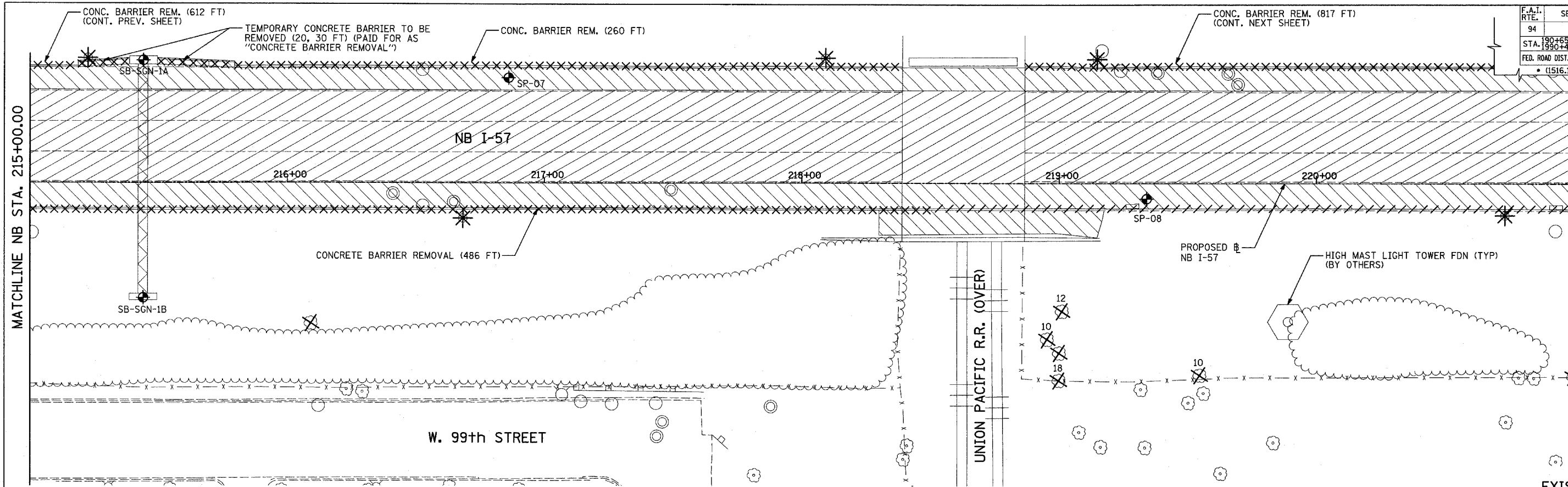
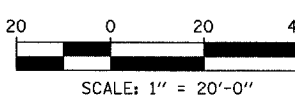
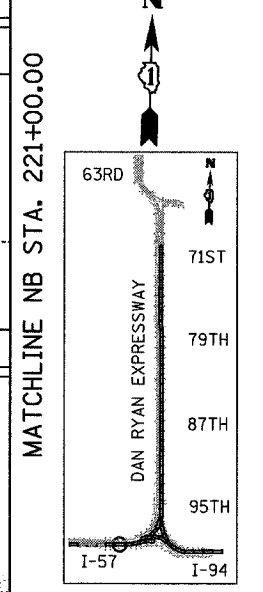


F.A.I. RTE.	SECTION	COUNTY	TOTAL SHEETS	SHEET NO.
94		COOK	916	69
STA. 190+65 (NB I-57) TO STA. 2316+00 (NB RYAN)		FED. ROAD DIST. NO. ILLINOIS FED. AID PROJECT		
		• (1516.1, 1717, & 1818) R-4		



EXISTING CONDITIONS

PROPOSED IMPROVEMENTS



LEGEND:

- #### COMB CONC CURB & GUTTER REMOVAL
- ~~~~~ CHAIN LINK FENCE REMOVAL
- XXXXX CONCRETE BARRIER/GUARDRAIL REMOVAL
- X10 TREE REMOVAL (UNITS) (NO UNIT SHOWN = <6)
- SOIL BORING LOCATIONS

- PAVEMENT REMOVAL
- PAVED SHOULDER REMOVAL
- PAVEMENT/SHOULDER REMOVAL, SPECIAL
- BITUMINOUS SURFACE REMOVAL, 4"
- BITUMINOUS SURFACE REMOVAL, 1 1/2" OR 1 3/4" (SEE CALLOUT)
- LIGHT POLE FOUNDATION REMOVAL (SEE ROADWAY LIGHTING & SURVEILLANCE PLANS)
- +XX.XX MAINLINE #
- XX.XXRT STATION/OFFSET

PLAN NOTES:

- ALL STATION/OFFSET/RADIUS CALLOUTS MEASURED TO EDGE OF PAVEMENT UNLESS OTHERWISE NOTED.
- EXACT LOCATIONS OF EXISTING PIERS/ABUTMENTS TO BE FIELD VERIFIED

TYLIN INTERNATIONAL

REVISIONS	
NAME	DATE

ILLINOIS DEPARTMENT OF TRANSPORTATION
 F.A.I. 94 (DAN RYAN EXPRESSWAY)
 EXISTING AND PROPOSED PLAN
 NB I-57
 NB I-57 STA. 215+00.00 TO 221+00.00

SCALE: 1"=20'
 DATE: MARCH 7, 2006
 DRAWN BY: RTM
 CHECKED BY: MPG