

**MATERIALS REQUIRED FOR (1) ONE LUG SYSTEM COMPLETE, 26'**  
 (Excluding CRC Concrete, Pavement Reinforcement, Stabilized Sub-base and Sub-base Granular Material)

Bar No.	Size	Length	Shape
a	144 No. 8	16'-8"	
b	24 No. 5	27'-0"	
c	144 No. 5	20'-0"	
d	28 No. 4	11'-9" or 13'-9"	

Concrete (cu. yds.) 29.85  
 Reinforcing Bars (lbs.) 10330  
 Concrete Pad (sq. yds.) 139

**MATERIALS REQUIRED FOR (1) ONE LUG SYSTEM COMPLETE, 36'**  
 (Excluding CRC Concrete, Pavement Reinforcement, Stabilized Sub-base and Sub-base Granular Material)

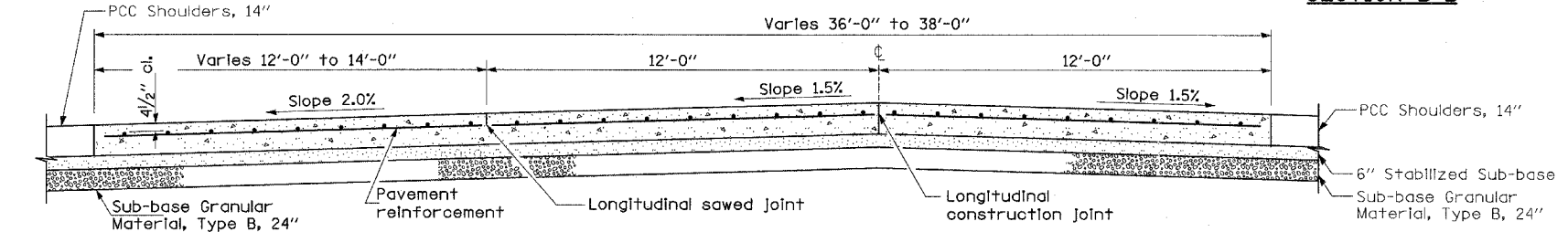
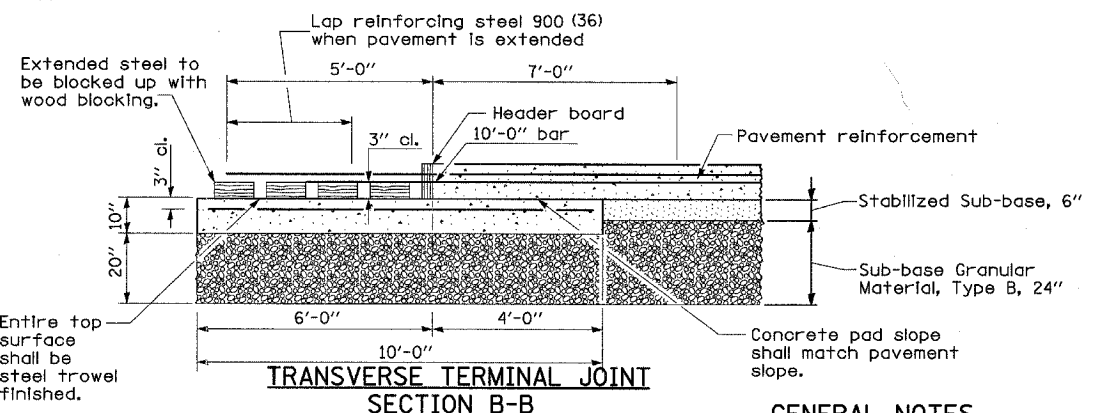
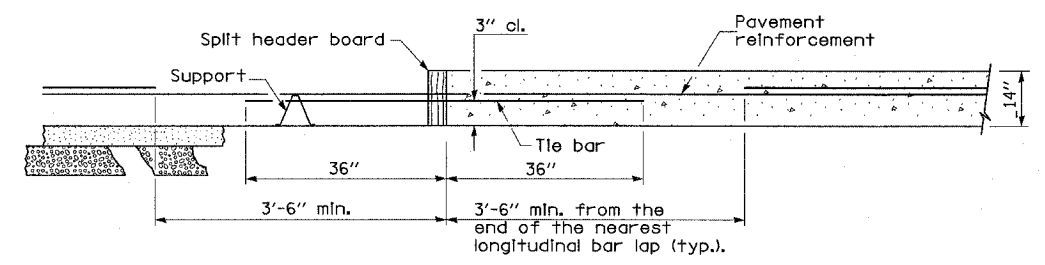
Bar No.	Size	Length	Shape
a	198 No. 8	16'-8"	
b	24 No. 5	37'-0"	
c	198 No. 5	20'-0"	
d	42 No. 4	11'-9"	

Concrete (cu. yds.) 41.33  
 Reinforcing Bars (lbs.) 14200  
 Concrete Pad (sq. yds.) 192

**MATERIALS REQUIRED FOR (1) ONE LUG SYSTEM COMPLETE, 38'**  
 (Excluding CRC Concrete, Pavement Reinforcement, Stabilized Sub-base and Sub-base Granular Material)

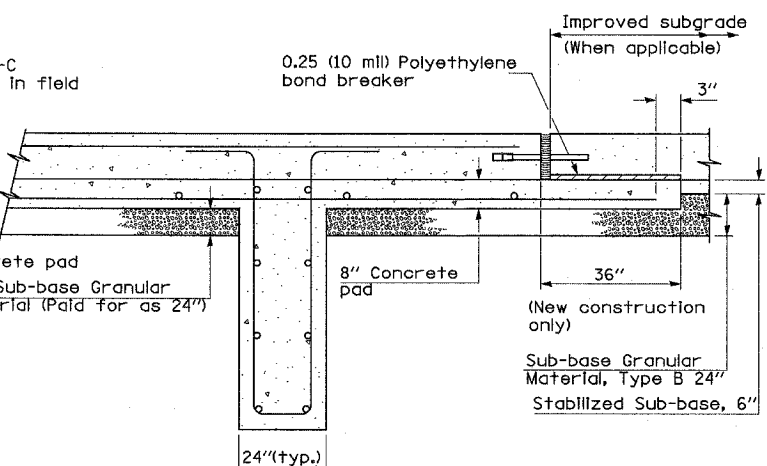
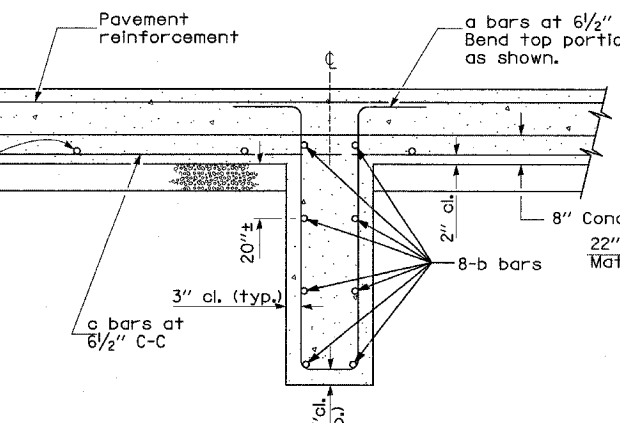
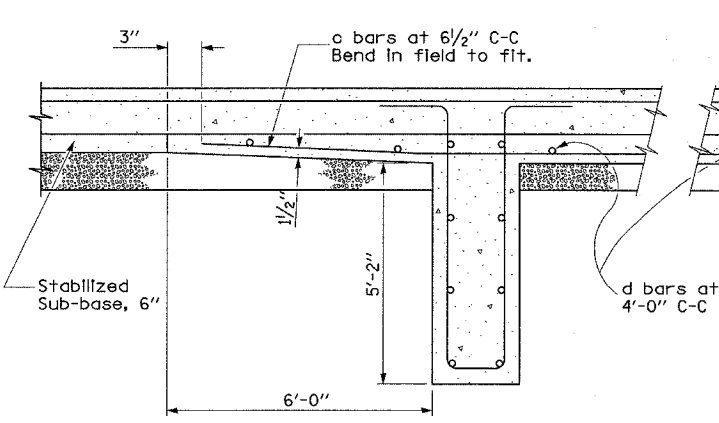
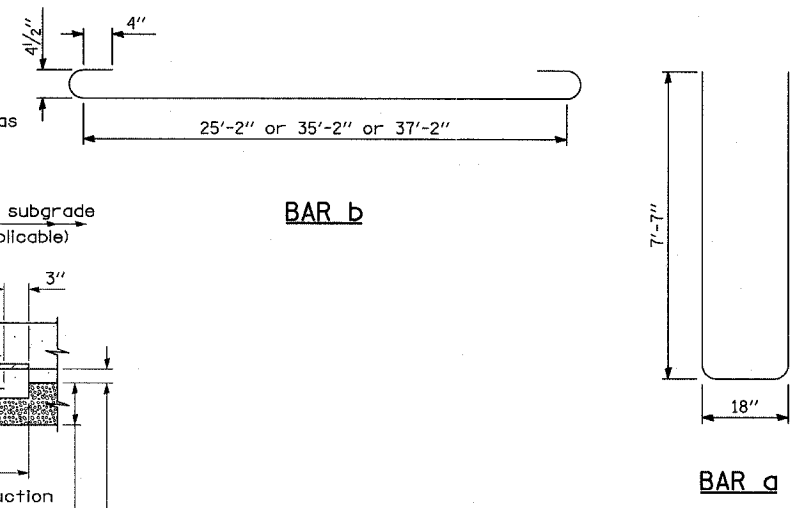
Bar No.	Size	Length	Shape
a	210 No. 8	16'-8"	
b	24 No. 5	39'-0"	
c	210 No. 5	20'-0"	
d	42 No. 4	11'-9" or 13'-9"	

Concrete (cu. yds.) 43.63  
 Reinforcing Bars (lbs.) 15060  
 Concrete Pad (sq. yds.) 203



**GENERAL NOTES**

See Pavement Reinforcement details for additional information.  
 See Standards 420001 and 420401 for joint details not shown.  
 All dimensions are in inches unless otherwise shown.  
 Sub-base granular material that varies in thickness below the lug-system or the transverse terminal joint will be paid for as "Sub-base Granular Material, Type B, 24"



**REVISIONS**

NAME	DATE

ILLINOIS DEPARTMENT OF TRANSPORTATION  
 F.A.I. 94 (DAN RYAN EXPRESSWAY)  
 MISCELLANEOUS DETAILS:  
 CONTINUOUSLY REINFORCED PORTLAND CEMENT CONCRETE PAVEMENT AND LUG SYSTEM COMPLETE, 26', 36', & 38'

SCALE: NONE  
 DATE: MARCH 7, 2006  
 DRAWN BY: MPG  
 CHECKED BY: TGB