

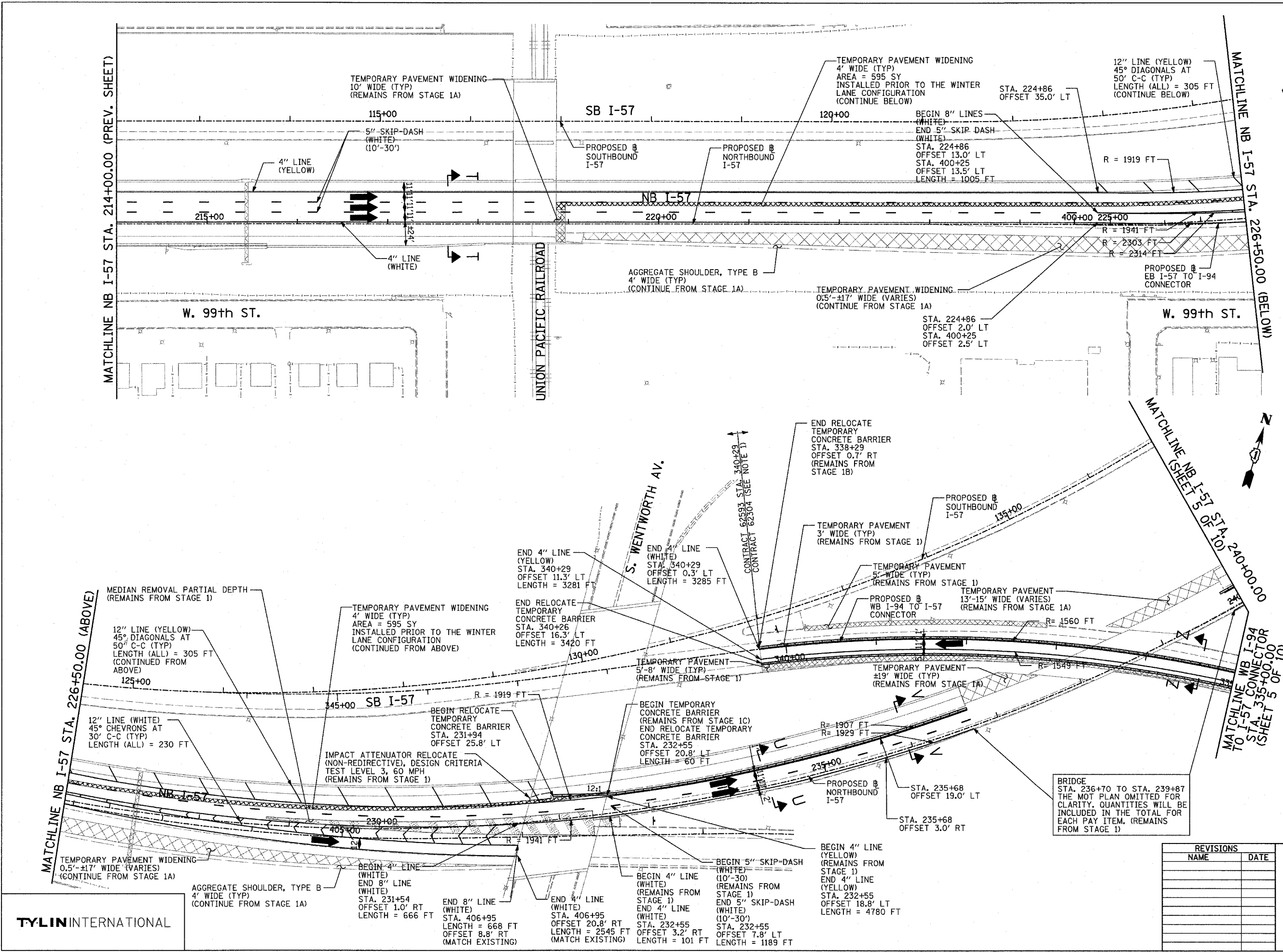
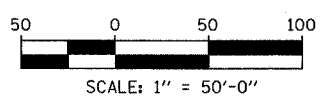
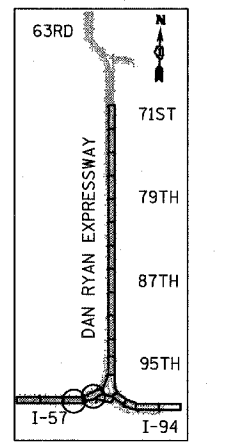
F.A.I. RTE.	SECTION	COUNTY	TOTAL SHEETS	SHEET NO.
94		COOK	916	221
STA. 190+65 (NB I-57) TO STA. 2316+00 (NB RYAN)				
FED. ROAD DIST. NO. ILLINOIS FED. AID PROJECT				
(1516.J, 1717, & 1818) R-4 62304				



NOTE:
 1. MOT AT THE WEST END OF CONTRACT 62304 FOR THE WB CONNECTOR MUST AT ALL TIMES MATCH CONTRACT 62593 TO THE WEST.

LEGEND:

	TEMPORARY CONCRETE BARRIER
	TRAFFIC LANE
	WORK ZONE
	BARRICADE, TYPE III
	DRUM WITH MONO-DIRECTIONAL STEADY BURNING LIGHT
	ARROW BOARD
	TEMPORARY PAVEMENT



REVISIONS	
NAME	DATE

ILLINOIS DEPARTMENT OF TRANSPORTATION
 F.A.I. 94 (DAN RYAN EXPRESSWAY)
 MAINTENANCE OF TRAFFIC PLAN
 WINTER LANE CONFIGURATION - NB I-94
 NB I-57 STA. 214+00 TO 240+00
 SHEET 2 OF 10

SCALE: 1"=50'-0"
 DATE: MARCH 7, 2006
 DRAWN BY: RTM
 CHECKED BY: JDF

TYLIN INTERNATIONAL