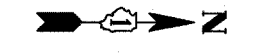


F.A.I. RTE.	SECTION	COUNTY	TOTAL SHEETS	SHEET NO.
94		COOK	916	276
STA. 190+65 (NB I-57) TO STA. 2316+00 (NB RYAN)				
FED. ROAD DIST. NO. ILLINOIS FED. AID PROJECT				
(1516J, 1717, & 1818) R-4				
62304				

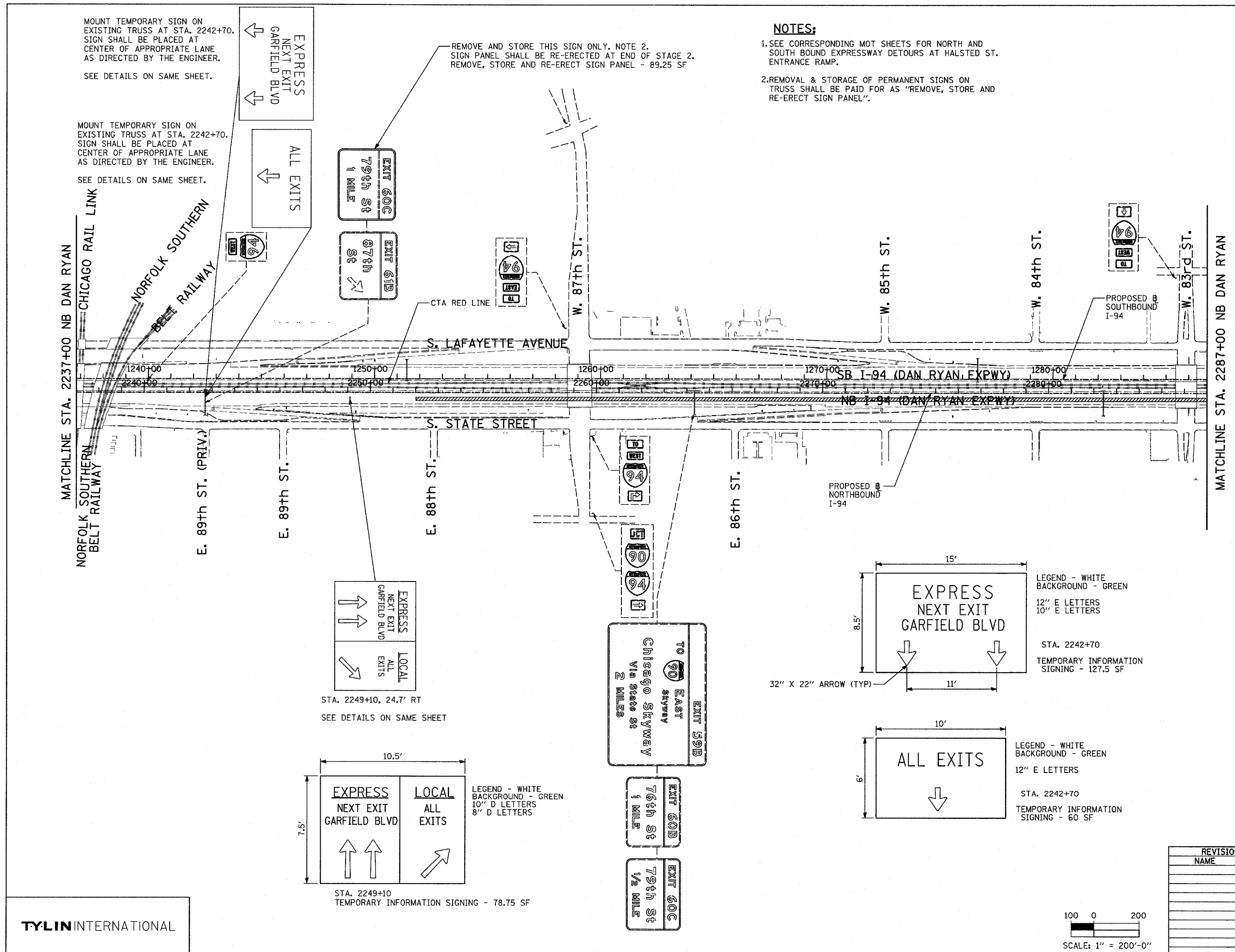
**NOTES:**

- SEE CORRESPONDING MOT SHEETS FOR NORTH AND SOUTH BOUND EXPRESSWAY DETOURS AT HALSTED ST. ENTRANCE RAMP.
- REMOVAL & STORAGE OF PERMANENT SIGNS ON TRUSS SHALL BE PAID FOR AS "REMOVE, STORE AND RE-ERECT SIGN PANEL".



**SIGNING LEGEND:**

- EXISTING GROUND MOUNTED SIGN
- EXISTING OVERHEAD TRUSS MOUNTED SIGN
- EXISTING OVERHEAD SIGN STRUCTURE-BRIDGE MOUNTED
- EXISTING OVERHEAD CANTILEVER MOUNTED SIGN
- PROPOSED GROUND MOUNTED SIGN
- PROPOSED OVERHEAD SIGN STRUCTURE - TRUSS
- CONSTRUCTION ZONE
- EXISTING SIGN
- EXISTING SIGN TO BE REMOVED
- PROPOSED SIGN

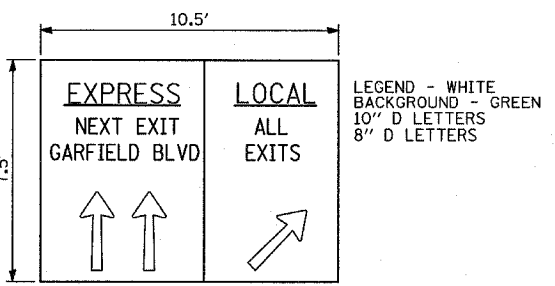


MOUNT TEMPORARY SIGN ON EXISTING TRUSS AT STA. 2242+70. SIGN SHALL BE PLACED AT CENTER OF APPROPRIATE LANE AS DIRECTED BY THE ENGINEER. SEE DETAILS ON SAME SHEET.

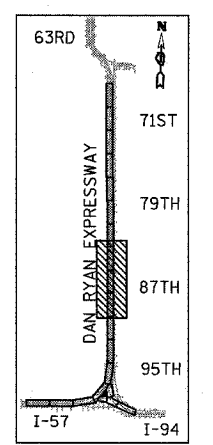
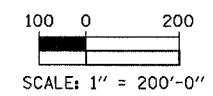
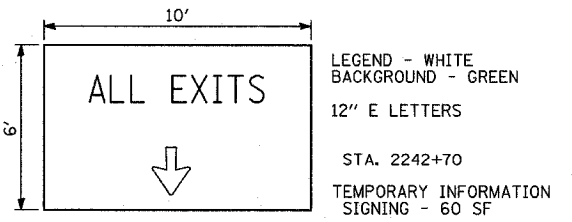
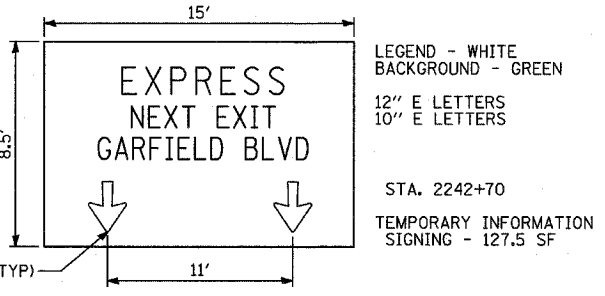
MOUNT TEMPORARY SIGN ON EXISTING TRUSS AT STA. 2242+70. SIGN SHALL BE PLACED AT CENTER OF APPROPRIATE LANE AS DIRECTED BY THE ENGINEER. SEE DETAILS ON SAME SHEET.

REMOVE AND STORE THIS SIGN ONLY. NOTE 2. SIGN PANEL SHALL BE RE-ERECTED AT END OF STAGE 2. REMOVE, STORE AND RE-ERECT SIGN PANEL - 89.25 SF

STA. 2249+10, 24.7' RT  
SEE DETAILS ON SAME SHEET



STA. 2249+10  
TEMPORARY INFORMATION SIGNING - 78.75 SF



LOCATION MAP

REVISIONS	
NAME	DATE

ILLINOIS DEPARTMENT OF TRANSPORTATION  
F.A.I. 94 (DAN RYAN EXPRESSWAY)

**CONSTRUCTION SIGNING-STAGE 2**  
STA. 2237+00 TO STA. 2287+00  
SHEET 4 OF 5

SCALE: 1" = 200'  
DATE: MARCH 7, 2006

DRAWN BY: AMB  
CHECKED BY: TGB