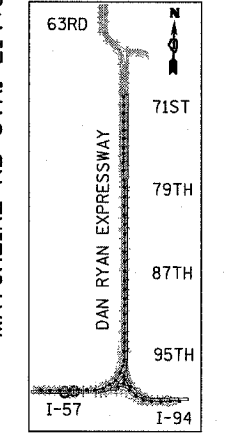
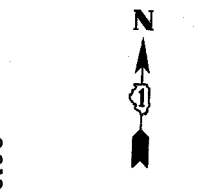
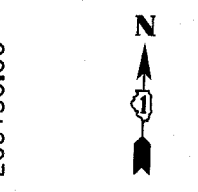
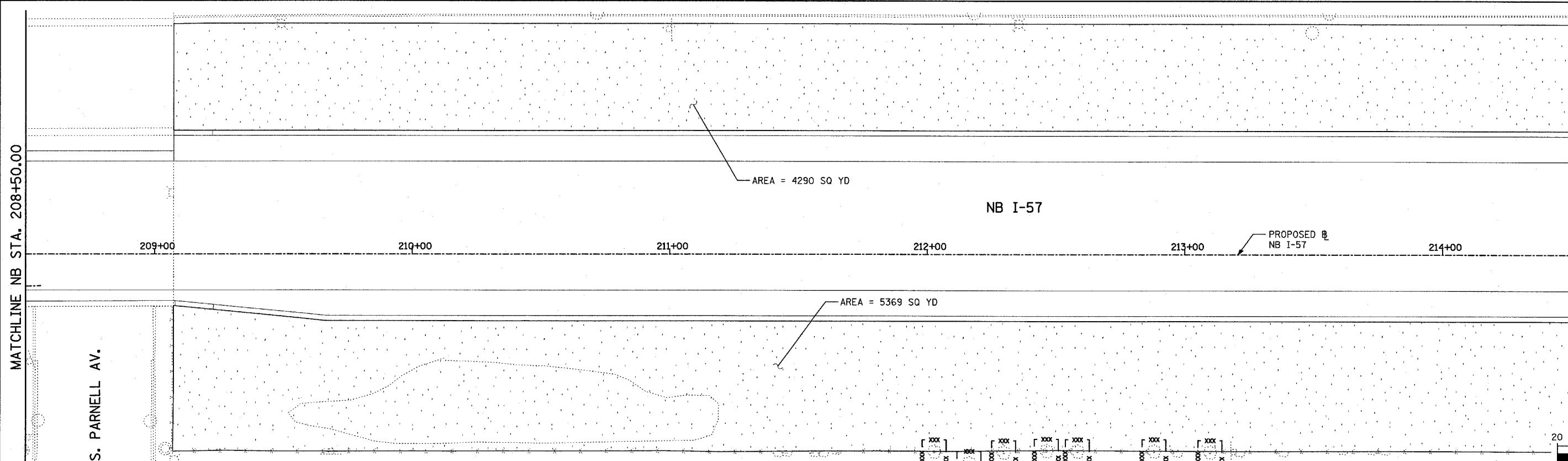
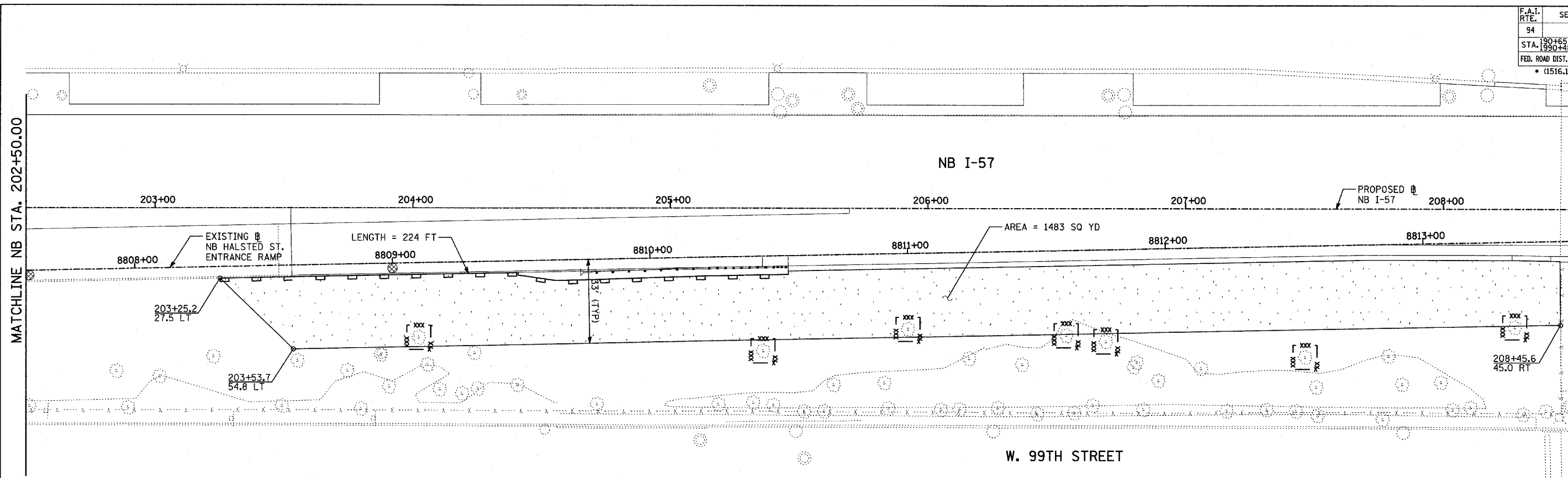
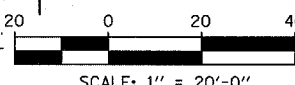


F.A.I. RTE.	SECTION	COUNTY	TOTAL SHEETS	SHEET NO.
94		COOK	916	284
STA. 190+65 (NB I-57) TO STA. 2316+00 (NB RYAN)				
FED. ROAD DIST. NO. ILLINOIS FED. AID PROJECT				
• (1516.1, 1717, & 1818) R-4				
				62304



LOCATION MAP



LEGEND:

- TEMPORARY EROSION CONTROL SEEDING
- SEDIMENT CONTROL, SILT FENCE
- INLET FILTER, TO BE INSTALLED IN OFF PROJECT DRAINAGE STRUCTURES ACCEPTING STORMWATER RUNOFF
- TEMPORARY FENCE
- TEMPORARY DITCH CHECK
- PROPOSED DRAINAGE SWALE (SEE DRAINAGE PLANS)
- EXISTING DRAINAGE SWALE
- TEMPORARY FENCE FOR TREE PROTECTION (15 FEET PER SIDE = 60 FEET TOTAL)

TOTAL NUMBER OF INLET FILTERS THIS SHEET: 2
 TOTAL NUMBER OF TEMPORARY DITCH CHECKS THIS SHEET: 0
 TOTAL NUMBER OF TREES TO BE PROTECTED THIS SHEET: 14

REVISIONS	
NAME	DATE

ILLINOIS DEPARTMENT OF TRANSPORTATION
 F.A.I. 94 (DAN RYAN EXPRESSWAY)
 EROSION CONTROL PLAN
 NB I-57
 STA. 202+50.00 TO 214+50.00
 (SHEET 2 OF 28)

SCALE: 1"=20'
 DATE: MARCH 7, 2006

DRAWN BY: JJS
 CHECKED BY: MPG



03/03/2006 09:02:26 AM