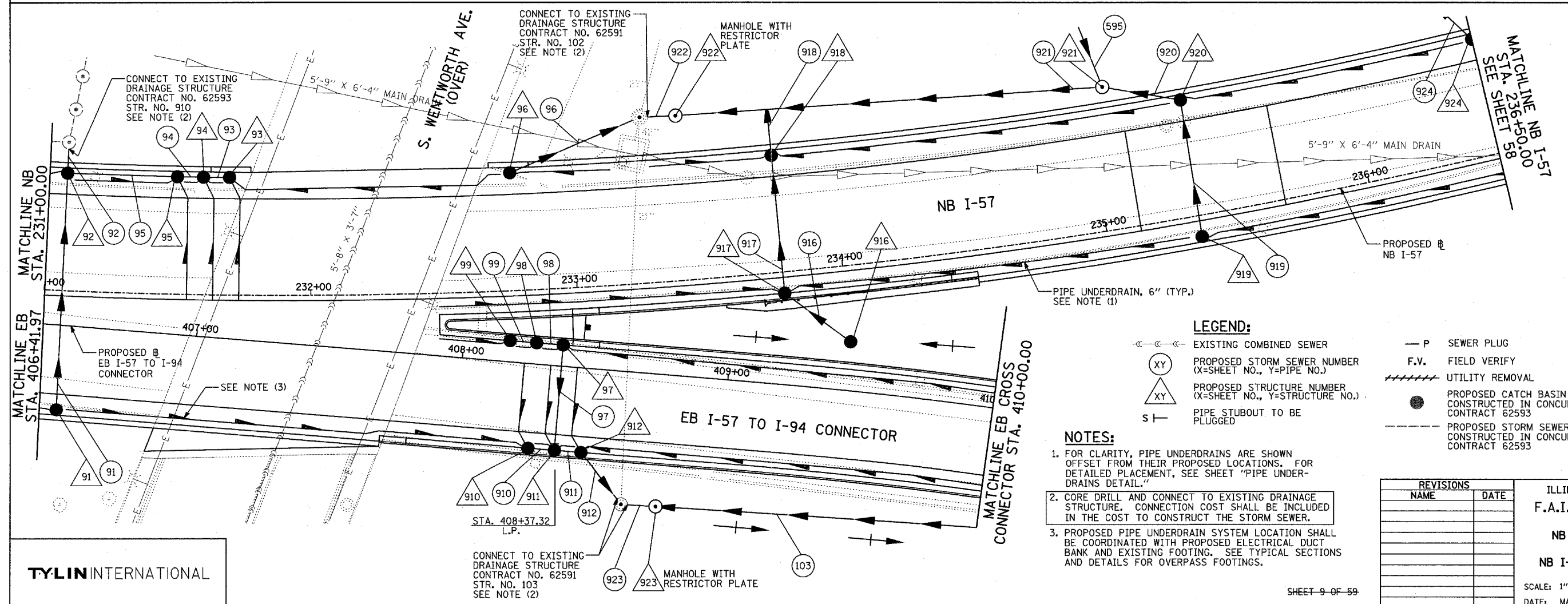
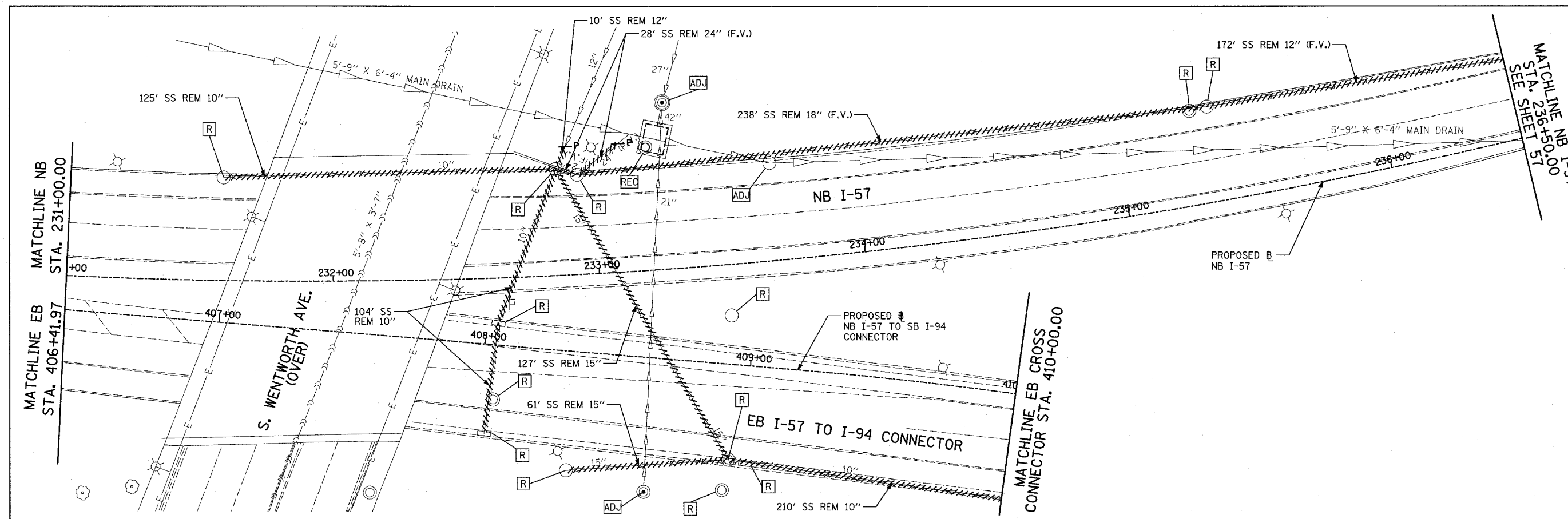
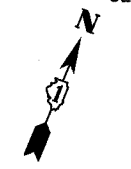
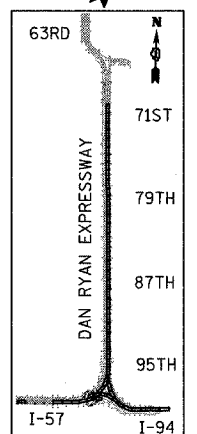


F.A.I. RTE.	SECTION	COUNTY	TOTAL SHEETS	SHEET NO.
94		COOK	916	320
STA. 190+65 (NB I-57) TO STA. 2316+00 (NB RYAN EXPRESSWAY)				
FED. ROAD DIST. NO. ILLINOIS FED. AID PROJECT				
• (1516.1, 1717, & 1818) R-4				



EXISTING CONDITIONS
PROPOSED IMPROVEMENTS



LOCATION MAP

- LEGEND:**
- EXISTING COMBINED SEWER
 - (XY) PROPOSED STORM SEWER NUMBER (X=SHEET NO., Y=PIPE NO.)
 - △(XY) PROPOSED STRUCTURE NUMBER (X=SHEET NO., Y=STRUCTURE NO.)
 - P SEWER PLUG
 - F.V. FIELD VERIFY
 - UTILITY REMOVAL
 - PROPOSED CATCH BASIN CONSTRUCTED IN CONCURRENT CONTRACT 62593
 - - - PROPOSED STORM SEWER CONSTRUCTED IN CONCURRENT CONTRACT 62593
 - PIPE UNDERDRAIN, 6" (TYP.) SEE NOTE (1)
 - PIPE STUBOUT TO BE PLUGGED

- NOTES:**
- FOR CLARITY, PIPE UNDERDRAINS ARE SHOWN OFFSET FROM THEIR PROPOSED LOCATIONS. FOR DETAILED PLACEMENT, SEE SHEET "PIPE UNDERDRAINS DETAIL."
 - CORE DRILL AND CONNECT TO EXISTING DRAINAGE STRUCTURE. CONNECTION COST SHALL BE INCLUDED IN THE COST TO CONSTRUCT THE STORM SEWER.
 - PROPOSED PIPE UNDERDRAIN SYSTEM LOCATION SHALL BE COORDINATED WITH PROPOSED ELECTRICAL DUCT BANK AND EXISTING FOOTING. SEE TYPICAL SECTIONS AND DETAILS FOR OVERPASS FOOTINGS.

REVISIONS	
NAME	DATE

ILLINOIS DEPARTMENT OF TRANSPORTATION
F.A.I. 94 (DAN RYAN EXPRESSWAY)
DRAINAGE AND UTILITY PLAN
NB I-57 MAINLINE AND EB I-57 TO I-94 CONNECTOR
NB I-57 STA. 231+00.00 TO 236+50.00 AND EB STA. 410+00.00

SCALE: 1"=20'
DATE: MARCH 7, 2006

DRAWN BY: MB
CHECKED BY: DA

TYLIN INTERNATIONAL