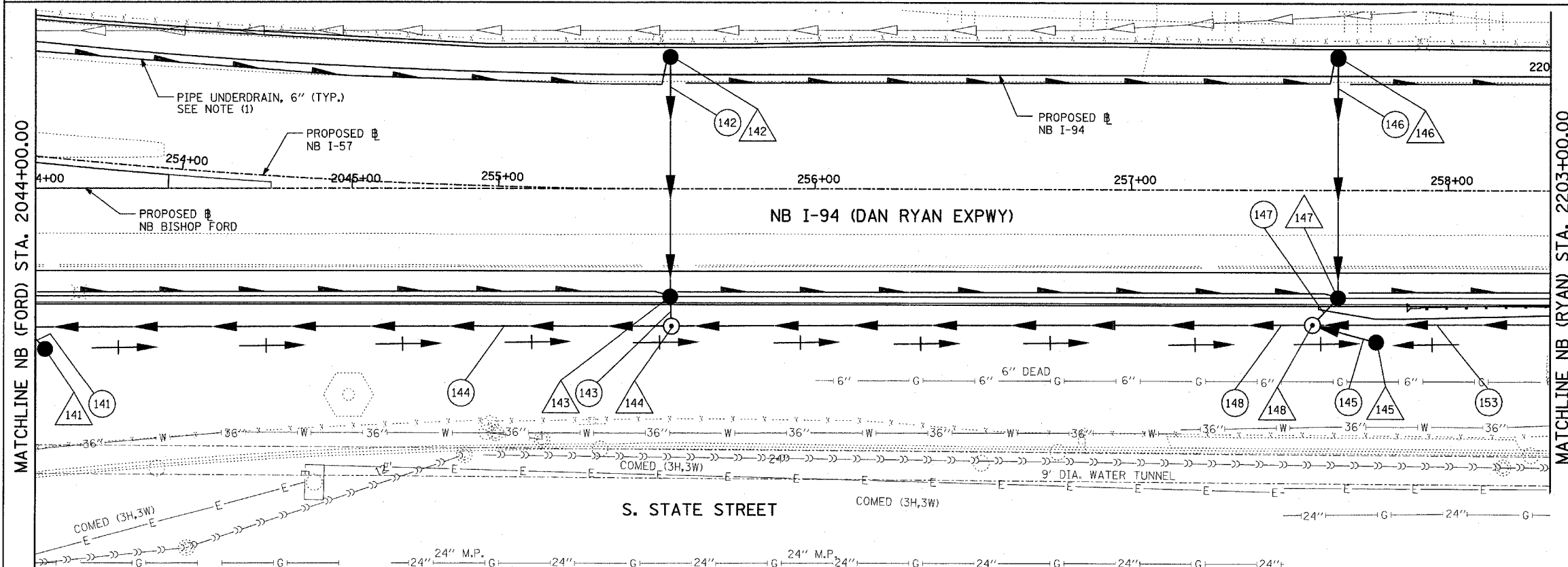
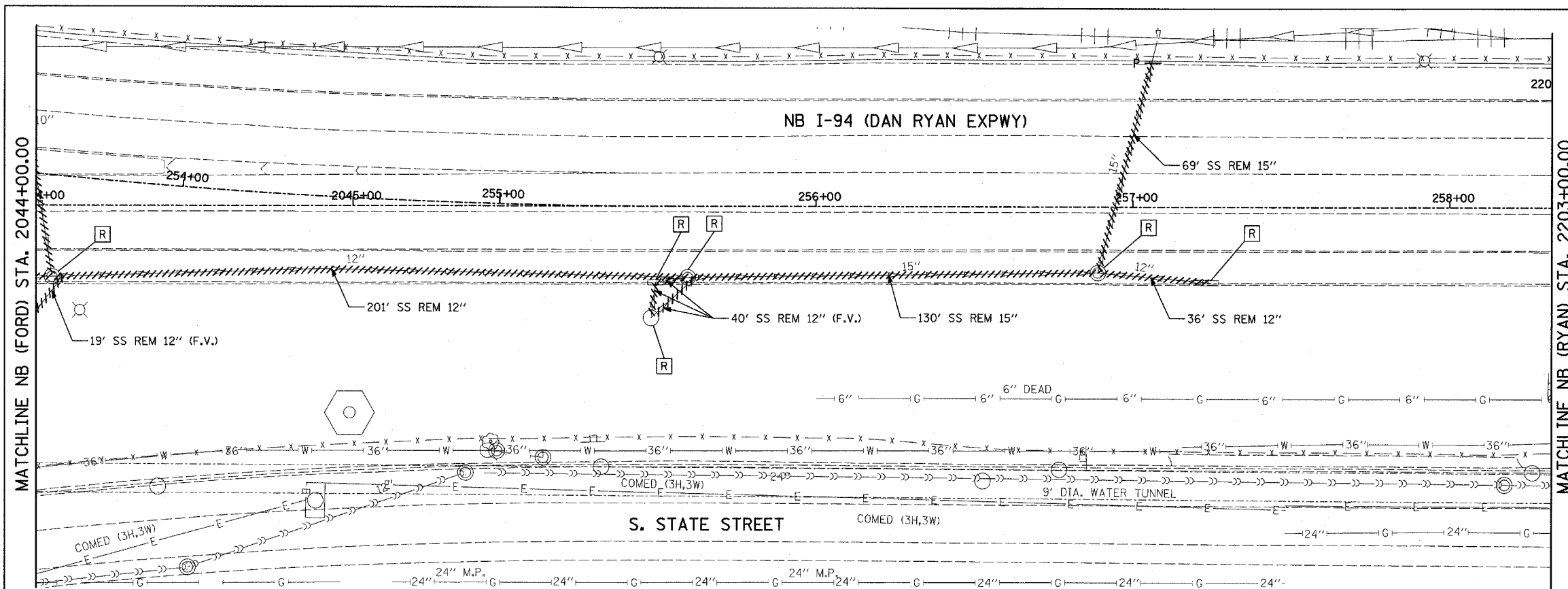
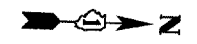
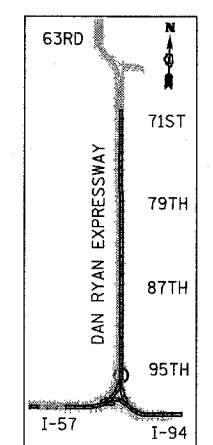


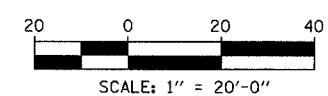
| | | | | |
|---|---------|--------|--------------|-----------|
| F.A.I. RTE. | SECTION | COUNTY | TOTAL SHEETS | SHEET NO. |
| 94 | | COOK | 916 | 325 |
| STA. 190+65 (NB I-57) TO STA. 2316+00 (NB RYAN) | | | | |
| FED. ROAD DIST. NO. ILLINOIS FED. AID PROJECT | | | | |
| • (1516.I, 1717, & 1818) R-4 | | | | |
| | | | | 62304 |



EXISTING CONDITIONS
PROPOSED IMPROVEMENTS



LOCATION MAP



LEGEND:

- EXISTING COMBINED SEWER
- PROPOSED STORM SEWER NUMBER (X=SHEET NO., Y=PIPE NO.)
- PROPOSED STRUCTURE NUMBER (X=SHEET NO., Y=STRUCTURE NO.)
- PIPE STUBOUT TO BE PLUGGED
- SEWER PLUG
- F.V. FIELD VERIFY
- UTILITY REMOVAL
- PROPOSED CATCH BASIN CONSTRUCTED IN CONCURRENT CONTRACT 62593
- PROPOSED STORM SEWER CONSTRUCTED IN CONCURRENT CONTRACT 62593

NOTES:

- FOR CLARITY, PIPE UNDERDRAINS ARE SHOWN OFFSET FROM THEIR PROPOSED LOCATIONS. FOR DETAILED PLACEMENT, SEE SHEET "PIPE UNDERDRAINS DETAIL."

TYLIN INTERNATIONAL

| REVISIONS | |
|-----------|------|
| NAME | DATE |
| | |
| | |
| | |
| | |
| | |
| | |
| | |
| | |
| | |

ILLINOIS DEPARTMENT OF TRANSPORTATION
**F.A.I. 94 (DAN RYAN EXPRESSWAY)
 DRAINAGE AND UTILITY PLAN**
 NB I-94 (BISHOP FORD) MAINLINE AND
 NB I-94 (DAN RYAN EXPY) MAINLINE AND NB I-57
 NB (FORD) STA. 2044+00.00 TO
 NB (RYAN) STA. 2203+00.00
 SCALE: 1"=20' DRAWN BY: MB
 DATE: MARCH 7, 2006 CHECKED BY: DA