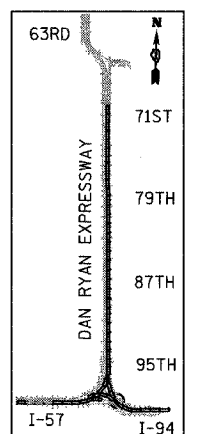
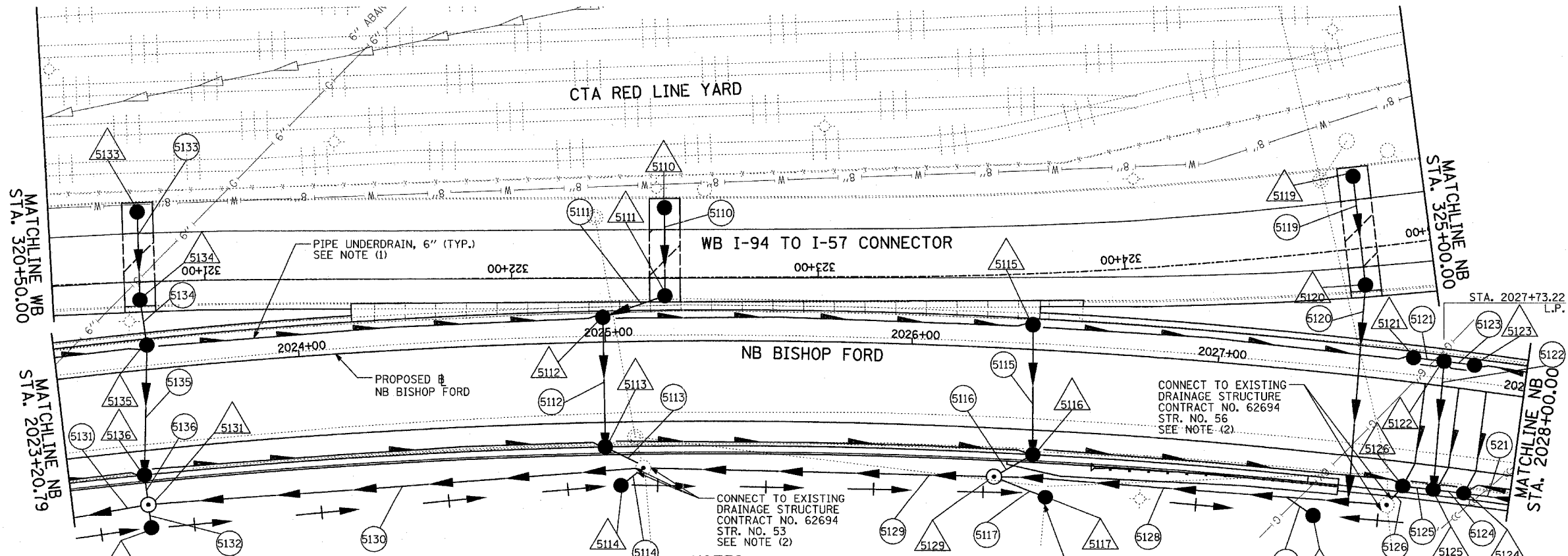
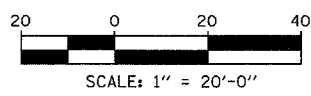


EXISTING CONDITIONS
PROPOSED IMPROVEMENTS



LOCATION MAP



LEGEND:

- — — — — EXISTING COMBINED SEWER
- (XY) PROPOSED STORM SEWER NUMBER (X=SHEET NO., Y=PIPE NO.)
- (XY) PROPOSED STRUCTURE NUMBER (X=SHEET NO., Y=STRUCTURE NO.)
- — — — — PIPE STUBOUT TO BE PLUGGED
- P — SEWER PLUG
- F.V. FIELD VERIFY
- ////// UTILITY REMOVAL
- PROPOSED CATCH BASIN CONSTRUCTED IN CONCURRENT CONTRACT 62593
- PROPOSED STORM SEWER CONSTRUCTED IN CONCURRENT CONTRACT 62593

NOTES:

1. FOR CLARITY, PIPE UNDERDRAINS ARE SHOWN OFFSET FROM THEIR PROPOSED LOCATIONS. FOR DETAILED PLACEMENT, SEE SHEET "PIPE UNDERDRAINS DETAIL."
2. CORE DRILL AND CONNECT TO EXISTING DRAINAGE STRUCTURE. CONNECTION COST SHALL BE INCLUDED IN THE COST TO CONSTRUCT THE STORM SEWER.
3. COST SHALL NOT BE PAID FOR SEPARATELY BUT INCLUDED IN COST OF SEWER INSTALLATION.

REVISIONS	
NAME	DATE

ILLINOIS DEPARTMENT OF TRANSPORTATION
F.A.I. 94 (DAN RYAN EXPRESSWAY)
EXISTING AND PROPOSED PLAN
NB I-94 (BISHOP FORD FREEWAY)
WB STA. 320+50.00 TO 325+00.00
NB STA. 2023+20.79 TO 2028+00.00

SCALE: 1"=20'
DATE: MARCH 7, 2006
DRAWN BY: MB
CHECKED BY: DA